

Electrical Department: (Cont'd)

	brt. fwd.	
5,734$\frac{1}{2}$ HP.		
ISHPEMING HOSPITAL:		
Spare for Dumb Waiter	3	
" " Hot Water Return	<u>5</u>	
		8
ATHENS MINE:		
Pump Motor	35	
Fan "	40	
Pump "	<u>50</u>	
		125
MAAS MINE:		
Winze Pump	15	
Pump (from Morris Mine)	50	
Hoist Motor from Stephenson Mine	75	
Rheostat Pump	<u>2</u>	
		142
NEGAUNEE MINE:		
Flywheel Hoist Set Motor	350	
Top Tram	<u>50</u>	
		400
PRINCETON MINE:		
Underground Pump	<u>150</u>	
		150
PRINCETON CENTRAL SHOPS & CENT. POWER PLANT:		
Grinder	3	
Austin Mine Hoist Motor	200	
" Top Tram	25	
Fire Pump from Mackinaw Mine	20	
Top Tram " Stephenson Mine	50	
Rock " " " "	25	
Ore " " " " "	<u>50</u>	
		373
GWINN STORAGE SHED & STEPHENSON TRANSFER:		
Stephenson 5th level Plunger Pump	250	
" " " " "	250	
" 8th " " "	50	
" 6th " Centrifugal Pump	125	
Top Tram from Gardner Mine	25	
" " " Stephenson Mine	<u>50</u>	
		750
TILDEN MINE:		
Conveyor Belt	50	
Trip Motor for Shovels	1 $\frac{1}{4}$	
Water Supply Pump	<u>2</u>	
		<u>53$\frac{1}{4}$</u>
TOTAL		5,735$\frac{3}{4}$ HP.
Spare Motors at Spies-Virgil Mine:		
Underground Haulage Set	150	
Grinder Motor	<u>3</u>	
TOTAL		153 HP.

MECHANICAL DEPARTMENT
ANNUAL REPORT
YEAR 1932

Electrical Department: (Cont'd)

Spare motors on Mesaba Range:

HILL-THUMBULL MINE & SHOPS:

Log Washer		25 HP.
Pump		3
Picking Belt		2
Spare		3
Log Washer	from Crosby Mine	40
Screen	" " "	20
Picking Belt	" " "	3
Chip Screen	" " "	3
Tables	" " "	20
Centrifugal Pump.	" " "	85
#2 Turbo	" " "	20
Feeder	" " "	<u>20</u>
		244 HP.

CANISTEO MINE:

Crosby Mine Planer		3
Spare Pump from Salisbury Mine		30
Centrifugal Pump		<u>600</u>
		633

HOLMAN-CLIFFS MINE:

Shaft Pump		<u>150</u>
		<u>150</u>

TOTAL 1,027 HP.

Total C.C.I.Co. & C.F.&L.Co. load connected to Power System - 12/31/32 -		26,754½ HP.
" Outside " " " " " " - "		- <u>18,590</u> HP.
	<u>TOTAL CONNECTED LOAD</u>	- 45,344½ HP.

Total connected load at Mesaba Range Mines - Dec. 31st, 1932 -		6,925 HP.
" " " " Spies-Virgil Mine - " " " -		1,398 HP.
Total spare motors on hand Dec. 31, 1932 - Ishpeming District -		5,735¾ HP.
" " " " " " " " - Spies-Virgil Mine -		153 HP.
" " " " " " " " - Mesaba Range Mines -		1,027 HP.

MECHANICAL DEPARTMENT
ANNUAL REPORT
YEAR 1932

Electrical Department: (Cont'd)

The following direct current generators and exciters are installed and operating as needed:

		INSTALLED TO JAN. 1 1932	INSTALLED TAKEN OUT IN 1932	TAKEN OUT IN 1932	JAN. 1, 1933 TOTALS
AU TRAIN WATER POWER PLANT:					
Exciters	(2)	34 KW.			34 KW.
GARP RIVER WATER POWER PLANT:					
Exciters	(2)	150			150
HOIST PLANT:					
Exciter		17½			
"		37			54½
McCLURE PLANT:					
Exciters	(2)	110			
M. G. Exciter		12			122
ESCANABA PLANT:					
Exciter		28			28
REPUBLIC PLANT:					
Exciter		18			
"		15			33
MAAS PLANT:					
Motor Driven Exciter		22½			
Turbo " "		22½			
Compressor Motor Exciters	(2)	20			65
PRINCETON CENTRAL POWER PLANT:					
Motor Driven Exciter		22½			
Turbo " "		22½			45
CLIFFS SHAFT MINE:					
Compressor Motor Exciters	(2)	20			20
BROWNSTONE SUBSTATION:					
Battery Charging Set		2			
Line Testing Set		1/2			
Voltage Regulator Control		1/2			
Condenser Exciter		15			18
ATHENS MINE:					
Nordberg Compressor Motor Exciter		10			
Flywheel Set Exciter		15			
Skip Hoist Generator		700			
Battery Charging Motor-Generator Set		1/2			
Ingersoll-Rand Compressor Motor Exciter		10			735½
MAAS CRUSHING PLANT:					
Pan Conveyor Generator		35			
" " " Exciter		1¾			36¾
fwd.		1,341¾ KW.	0	0	1,341¾ K.W.

MECHANICAL DEPARTMENT
ANNUAL REPORT
YEAR 1932

Electrical Department: (Cont'd)

	INSTALLED TO JAN. 1, 1932	INSTALLED IN 1932	TAKEN OUT IN 1932	JAN. 1, 1933 TOTALS
	brt. fwd.	1,341 $\frac{3}{4}$ KW.	0	0
				1,341 $\frac{3}{4}$ KW.
MEGAUNEE MINE:				
Skip Hoist Generator	400			
Cage " "	150			
Flywheel Set Exciter	25			
Exciters for Underground Pump Motors (2)	28			
Ingersoll-Rand Compressor Motor Exciter	10			
Nordberg " " "	10			
Bell Signal Set	1/2			
Skip Hoist Generator #2	400			
Cage " " #2	200			
Exciter on New Hoist Set	<u>35</u>			
				1,258 $\frac{1}{2}$
MORRIS MINE:				
Ingersoll-Rand Compressor Motor Exciter	12) to Inland Steel	12	
Nordberg " " "	10		10	
Ingersoll-Rand " " "	<u>10</u>			
				10
MACKINAW MINE:				
Compressor Motor Exciter	<u>10</u>			
				10
TILDEN MINE:				
Thrust Generator on Electric Shovel #29	15			
Hoist " " " " "	75			
Swing " " " " "	15			
Exciter " " " " "	5 $\frac{1}{2}$			
" " " " #31	5 $\frac{1}{2}$			
Thrust " " " " "	15			
Hoist " " " " "	75			
Swing " " " " "	16			
Exciter for Synchronous Motor	<u>15</u>			
				<u>237</u>
<u>TOTAL</u>	2,679 $\frac{1}{4}$ KW.	0	22	2,657 $\frac{1}{4}$ KW.

MECHANICAL DEPARTMENT
ANNUAL REPORT
YEAR 1932

Electrical Department: (Cont'd)

Underground Haulage Generators:

	<u>INSTALLED</u> <u>TO JAN. 1,</u>	<u>INSTALLED</u>	<u>TAKEN OUT</u>	<u>JAN. 1, 1933</u>
	<u>1932</u>	<u>IN 1932</u>	<u>IN 1932</u>	<u>TOTALS</u>
CLIFFS SHAFT MINE:				
Motor-Generator Set #2	100 KW.			
" " Charging Set	5			
" " Set #1	<u>100</u>			
				205 K.W.
ATHENS MINE:				
Rotary Converter #1	100			
" " #2	<u>100</u>			
				200
MAAS MINE:				
Motor-Generator Set #1	100			
" " " #2	<u>100</u>			
				200
NEGAUNEE MINE:				
Motor-Generator Set #1 (new)	200			
" " " #2	<u>150</u>			
				350
MORRIS-LLOYD MINE:				
Motor-Generator Set #1	100			
" " " #2 (To Inband Steel)	<u>100</u>		100	
				100
MACKINAW MINE:				
Rotary Converter	<u>100</u>			
				<u>100</u>
<u>TOTAL</u>	<u>1,255 KW.</u>	<u>0</u>	<u>100</u>	<u>1,155 KW.</u>

Direct Current Motors:

AU TRAIN WATER POWER PLANT:				
Governor Control Motors	(2)	<u>1/4</u>		
				1/4
CARP RIVER WATER POWER PLANT:				
Rheostat Control	(2)	1/4		
Governor "	(2)	<u>1/4</u>		
				1/2
McCLURE PLANT:				
Valve Control	(2)	2		
Rheostat "	(2)	<u>1/2</u>		
				2 1/2
CLIFFS SHAFT MINE:				
Portable Hoist		10		
Car Puller		6 1/2		
12 Scrapers		<u>180</u>		
				<u>196 1/2</u>
fwd.	199 3/4 HP.	0	0	199 3/4 HP.

MECHANICAL DEPARTMENT
ANNUAL REPORT
YEAR 1932

Electrical Department: (Cont'd)

		INSTALLED			JAN. 1, 1933	
		TO JAN. 1,	INSTALLED	TAKEN OUT	TOTALS	
		1932	IN 1932	IN 1932		
		199 $\frac{3}{4}$ HP.	0	0	199 $\frac{3}{4}$ HP.	
TILDEN MINE:						
	brt. fwd.					
Hoist Motor on Electric Shovel #29		100				
Swing " " " " "		20				
Thrust " " " " "		20				
Swing " " " " #31		20				
Thrust " " " " "		20				
Hoist " " " " "		<u>100</u>				
					280	
ATHENS MINE:						
Skip Hoist		900				
Ventilating Fans	7 - 5 HP. motors	35				
Sullivan Scrapers	2 - 6 $\frac{1}{2}$ " "	13				
" " "	10 - 15 " "	150				
Ventilating Fan		15				
Sullivan Scrapers	2 - 20 " "	40				
I.-R. " "	2 10 " "	<u>20</u>				
					1,173	
MAAS MINE:						
Timber Hoist - skip pit		10				
" " - 4th level		10				
Ventilating Fan		15				
Sullivan Scrapers	12 - 15 HP. motors	180				
" " "	7 - 6 $\frac{1}{2}$ " "	45 $\frac{1}{2}$				
Scrapper Slide		15				
Ventilating Fans	7 - 5 " "	35				
Scrapers	2 - 25 " "	50				
Conway Loader	(stored)	50		50		
I.-R. Scrapers	7 - 15 " "	105				
" " "	3 - 10 " "		30			
Scrapers	2 - 20 " "		<u>40</u>			
					535 $\frac{1}{2}$	
MAAS CRUSHING PLANT:						
Pan Conveyor		<u>40</u>				
					40	
NEGAUNEE MINE:						
Skip Hoist		500				
Cage "		200				
Timber Hoist - tunnel 20th level		10				
" " - 12th "		10				
Ventilating Fan (burned out & stored)		7 $\frac{1}{2}$		7 $\frac{1}{2}$		
Scrapers	12 - 7 $\frac{1}{2}$ HP. motors	90				
Sullivan Scrapers	10 - 6 $\frac{1}{2}$ " "	65				
" " "	3 - 25 " "	75				
Ventilating Fan		5				
Denver Scrapers	3 - 10 " "	30				
Sullivan Scrapers	7 - 15 " "	105				
Ingersoll-Rand Scrapers	3 - 15 " "	45				
" " " "	5 - 10 " "	<u>50</u>				
					1,185	
		fwd.	3,400 $\frac{3}{4}$ HP.	70	57 $\frac{1}{2}$	3,418 $\frac{1}{4}$ HP.

MECHANICAL DEPARTMENT
ANNUAL REPORT
YEAR 1932

Electrical Department: (Cont'd)

		<u>INSTALLED</u>			<u>JAN. 1, 1933</u>
		<u>TO JAN. 1,</u>	<u>INSTALLED</u>	<u>TAKEN OUT</u>	<u>TOTALS</u>
		<u>1932</u>	<u>IN 1932</u>	<u>IN 1932</u>	<u>JAN. 1, 1933</u>
brt. fwd.		<u>3,400$\frac{3}{4}$ HP.</u>	<u>70</u>	<u>57$\frac{1}{2}$</u>	<u>3,413$\frac{1}{4}$ HP.</u>
MORRIS MINE:					
	Ventilating Fan, 4th level			15	
	Sullivan Scrapers	7 - 6 $\frac{1}{2}$ HP. motors		45 $\frac{1}{2}$	
	Denver	7 - 7 $\frac{1}{2}$ " "		52 $\frac{1}{2}$	
	Sullivan	2 - 10 " "		20	
	"	5 - 7 $\frac{1}{2}$ " "		37 $\frac{1}{2}$	
	"	7 - 15 " "		45	
	Scraper Slide			15	
	Timber Hoist			7 $\frac{1}{2}$	
	Scrapers	3 - 25 " "		75	
	Ingersoll-Rand Scrapers	2 - 15 " "		30	
					165
GARDNER-MACKINAW MINE:					
	Sullivan Scrapers	2 - 20 HP. (stored)		40	
	Hoist	" "		15	
					0
	<u>TOTAL D.C. MOTORS</u>		<u>70</u>	<u>350$\frac{1}{2}$</u>	<u>3,578$\frac{1}{4}$ HP.</u>

Spare Generators and Exciters on hand December 31st, 1932:

CLIFFS SHAFT MINE:		
Motor-Generator Set for Battery Charging	20 KW.	20 KW.
GENERAL STOREHOUSE:		
Old Hoist Exciter	22	22
NEGAUNEE MINE:		
Skip Hoist (Armature only)	500 HP.	
	<u>TOTAL</u>	<u>42 K.W.</u>

Spare Underground Haulage Generators on hand December 31st, 1932:

GENERAL STOREHOUSE:		
Motor-Generator Set (from Morris)	100	
	<u>TOTAL</u>	100 KW.

Spare Direct Current Motors on hand December 31st, 1932:

ATHENS MINE:		
Timber Hoist Motor	10 HP.	
Fan	15	25 HP.
LLOYD MINE:		
Crane Motor	10	
Ore Loader	2	12
GENERAL STOREHOUSE:		
Pump Motor	20	
Spare Hoist Motor for Shovel	105	
" Swing " " "	20	
Small Motor-Generator Set	10	
	<u>fwd.</u>	<u>155</u>
		192 HP.

MECHANICAL DEPARTMENT
ANNUAL REPORT
YEAR 1932

Electrical Department: (Cont'd)

	brt. fwd.	192 HP.
GARDNER-MACKINAW MINE:		
Sullivan Scrapers	3 - 10 HP. motors	30
" Scraper		20
Hoist		<u>15</u>
		<u>65</u>
	<u>TOTAL</u>	<u>257 HP.</u>

MESABA RANGE:

Exciters and Generators installed up to December 31st, 1932:

BOZING MINE:		
Compressor Motor Exciter		<u>6 KW.</u>
		6 KW.
CANISTEO MINE:		
Hoist Generator on Shovel		137½
Swing " " "		40
Thrust " " "		39
Washing Plant Generator		150
Arc Welder		10
Shovel Hoist Generator		150
" Thrust "		39
" Swing "		40
" Exciter		<u>12</u>
		617½
HILL-TRUMBULL MINE:		
Hoist Generator on Shovel		137½
Swing " " "		40
Thrust " " "		<u>39</u>
		216½
HOLMAN-CLIFFS MINE:		
Hoist Generator on Shovel		137½
Swing " " "		40
Thrust " " "		39
Generator for Feeder		<u>150</u>
		<u>366½</u>
	<u>TOTAL</u>	<u>1,206½ KW.</u>

Underground Haulage Generators installed up to Dec. 31st, 1932:

HOLMAN-CLIFFS MINE:		
Motor*Generator Set		115 KW.
HILL-TRUMBULL MINE:		
Motor Generator Set		55
WADE MINE:		
Rotary Converter		<u>100</u>
	<u>TOTAL</u>	<u>270 KW.</u>

Direct Current Motors installed up to December 31st, 1932:

CANISTEO MINE:		
Rack Drives on Classifiers	4 - 5 HP. motors	20 HP.
Hoist Motor on Shovel		187½
Swing " " "		40
Thrust " " "		40
Pan Conveyor		<u>40</u>
		327½ HP.

MECHANICAL DEPARTMENT
ANNUAL REPORT
YEAR 1932

Electrical Department: (Cont'd)

	brt. fwd.	
HILL-TRUMBULL MINE:		
Feeder Motor	60	
Hoist Motor on Shovel	187½	
Swing " " "	40	
Thrust " " "	39	
Dorr Bowl Classifiers	10	
		336½
HOLMAN-CLIFFS MINE:		
Fan Conveyor	40	
Log Washers	120	
Hoist Motor on Shovel	187½	
Swing " " "	40	
Thrust " " "	40	
		427½
<u>TOTAL</u>		1,091½ HP.

MESABA RANGE:

Total Exciters and Generators installed to December 31st, 1932 -		1,206½ KW.
" Haulage Generators " " " " " -		270 KW.
" Direct Current Motors " " " " " -		1,091½ HP.

SPIES-VIRGIL MINE:

Exciters installed to December 31st, 1932:

Compressor Motor Exciter		10 KW.
Underground Haulage Generators installed to December 31st, 1932 -		150 KW.
Top Tram Larry Cars	2 - 20 H.P. D.C. Motors	40
Fan		<u>15</u>
		55 HP.

ISHPEMING DISTRICT:

Total D.C. Generators and Exciters installed to December 31st, 1932 -		2,857¼ K.W.
" Underground Haulage Generators " " " " " -		1,155 K.W.
" Direct Current Motors " " " " " -		3,578¼ H.P.
Total Spare D.C. Generators and Exciters on hand	" " " " " -	42 K.W.
" " Underground Haulage Generators " " " " " -		100 K.W.
" " Direct Current Motors " " " " " -		257 H.P.

MECHANICAL DEPARTMENT
ANNUAL REPORT
YEAR 1932

Electrical Department: (Cont'd)

Substation Transformers installed up to December 31st, 1932:

<u>66,000/2,300 Volts</u>	<u>Phase</u>	<u>No.</u>	<u>K.V.A.</u>	<u>TOTAL K.V.A.</u>	
Munising Substation	1	3	667	2,001	
Seney "	1	1	25	25	
Inland #1 "	1	3	500	1 500	
" #2 "	1	3	500	1 500	5,026 K.V.A.
<u>33,000/66,000 Volts</u>					
Gwinn Substation	1	3	1,250	3,750	3,750 "
<u>33,000/13,200 Volts</u>					
Clarksburg Substation	1	3	37½	112½	112½ "
<u>33,000/6,600 Volts</u>					
Eben Substation	1	1	25	25	25 "
<u>33,000/2,300 Volts</u>					
Brownstone Substation	1	3	400	1,200	
Cliffs Shaft-Holmes Substation	1	6	500	3 000	
Morris-Lloyd Substation	1	3	590	1 770	
Princeton "	1	3	250	750	
Republic "	1	3	400	1 200	
Maas "	1	6	590	3 540	
Escanaba Plant "	1	3	590	1 770	
Gwinn "	1	3	625	1 875	
Munising "	1	3	200	600	
McClure Plant "	3	2	5,000	10 000	
Carp " "	1	3	1 900	5 700	
Au Train " "	3	1	1 250	1 250	
Palmer " "	1	3	625	1 875	
Hoist " "	1	3	667	2 000	
Greenwood " "	1	3	150	450	
Chatham " "	1	2	15	30	37,010 "
<u>6,600/2,300 Volts</u>					
Carp Plant Substation	1	6	185	1,110	
Gwinn " "	1	3	350	1 050	
Mackinaw " "	1	3	350	1 050	
Inland #1 " "	1	3	25	75	
Blaney Park " "	1	2	25	50	
" " " "	1	1	15	15	3,350 "
<u>6,600/115-230 Volts</u>					
Germfask	1	1	15	15	
"	1	2	1.5	3	
"	1	2	3	6	24 "
<u>GRAND TOTAL</u>					49,297½ K.V.A.

Transformers used for Underground Haulage installed to 12/31/32:

Athens Mine converters	1	6	35	210	
Mackinaw Mine converter	1	3	35	105	315 K.V.A.

MECHANICAL DEPARTMENT
ANNUAL REPORT
YEAR 1932

Electrical Department: (Cont'd)

Distribution Transformers installed up to December 31st, 1932:

<u>2300/220/110 Volts</u>	<u>PHASE</u>	<u>NO.</u>	<u>K.V.A.</u>	<u>TOTAL K.V.A.</u>
<u>ANGELINE MINE:</u>				
Hoist Control	1	1	<u>7½</u>	7½
<u>CLIFFS SHAFT MINE:</u>				
Office Lights	1	1	10	
" " "	1	1	15	
"A" Shaft Hoists	1	2 (15)	30	
Pump Station Lights	1	1	3	
Crusher House Lights	1	2 (1)	2	
Crushers & Surface Lights	1	3 (10)	30	
Gravel Scraper	1	2 (37)	75	
Underground Scrapers	1	4 (50)	200	
" " "	1	3 (25)	75	
Motor-Generator Set for Battery Charging and 1st level "A" Scrapers	1	3 (15)	45	
Rectifiers	1	7 (5)	35	
Lights	1	34 (1½)	51	
Scraper Lights	1	1	2	
Signal in Engine House	1	1	5	
Scraper Lights	1	1	3	
Top Tram Control	1	1	<u>1</u>	582
<u>HARD ORE, BROWNSTONE, ETC.</u>				
Light & Power	1	1	15	
" " "	1	1	<u>7½</u>	
Shop	1	1	30	
Manager's Residence	1	2 (10)	20	
" " "	1	1	5	
F. C. Stanford & Testing	1	1	<u>7½</u>	
" " " "	1	1	<u>5</u>	90
<u>TILDEN MINE:</u>				
Pump	1	2 (10)	20	
Lights & Power	1	1	10	
" " "	1	2 (5)	10	
" " "	1	2	2	
Drills	1	3 (10)	30	
Shovel	1	3 (5)	15	
Crusher	1	3 (10)	30	
Synchronous Condenser	1	2 (7½)	15	
Scrapers	1	3 (15)	<u>45</u>	177
<u>ATHENS MINE:</u>				
Machine Shop	1	2 (10)	20	
Surface Lights & Lab. Hot Plates	1	3 (10)	30	
Pump Station Lights	1	1	5	
" " "	1	1	2	
100 G.P.M. Pump	3	1	40	
Signal System	1	1	1	
Engine House Lights	1	1	5	
" " "	1	1	4	
Top Tram	1	1	2	
" " Control	1	1	<u>1</u>	<u>110</u>

MECHANICAL DEPARTMENT
ANNUAL REPORT
YEAR 1932

Electrical Department: (Cont'd)

Distribution Transformers (Cont'd)		<u>PHASE</u>	<u>NO.</u>	<u>K.V.A.</u>	<u>TOTAL K.V.A.</u>
brt. fwd.					966½
MAAS MINE:					
Lights & Injection Pump	1	3	(10)	30	
Coal Crusher & Shop	1	2	(10)	20	
Signal System	1	1		½	
3rd Level Pump Station	1	2	(5)	10	
Cage Hoist Control	1	1		10	
Skip " "	1	1		2	
" " "	1	1		3	
Rock Tram	1	1		1	
Heaters in Engine House	1	1		7½	
Top Tram	1	1		2	
Shop	1	1		15	
					101
MAAS CRUSHING PLANT:					
Lights	1	1		7½	
					7½
NEGAUNEE MINE:					
Shop Light & Power	1	1		10	
" " " "	1	1		7½	
Engine House Lights & Power	1	1		10	
" " " " "	1	1		5	
Signal System	1	1		½	
Pump Station Lights, etc.	1	3	(7½)	22½	
12th Level Pump	1	3	(5)	15	
Barn	1	1		5	
Gravel Pit	1	1		7½	
Hoist & Lights - #2 Shaft	1	3	(10)	30	
Laboratory Lights & Power	1	2	(15)	30	
Undg. Haulage	1	1		3	
					146
SOUTH JACKSON CRUSHING PLANT:					
Hoist Brake	1	1		5	
Lights	1	1		2	
					7
LLOYD MINE:					
Cage Hoist Control	1	1		7½	
Skip " "	1	1		7½	
Water Supply Pump House Lights	1	1		2	
Engine House Lights & Bell System	1	1		5	
Shaft House Lights	1	1		5	
Auxiliary Compressor	1	1		2	
Lights & Power	1	1		2½	
					31½
MORRIS MINE:					
Location Lights	1	1		7½	
Club House Lights	1	1		10	
					17½
SECTION 6 SHAFT:					
Hoist Control	1	1		7½	
Lights	1	2	(2)	4	
					11½
			fwd.		1,288½

Electrical Department: (Cont'd)

Distribution Transformers (Cont'd)		PHASE	NO.	K.V.A.	TOTAL K.V.A.
brt. fwd.					1,286½
REFUBLIC MINE:					
Engine House Lights	1	1		7½	
Hoist Control	1	1		25	
Top Tram Controls	1	2	(1)	2	
Office Lights	1	1		3	
Water Power Plant Lights	1	1		1½	
" " " "	1	1		<u>3</u>	
					42
AUSTIN MINE:					
Shop	1	1		<u>10</u>	
					10
GARDNER MINE:					
Cage Hoist Control	1	1		10	
Top Tram	1	1		1	
Power & Lights	1	2	(10)	<u>20</u>	
					31
MACKINAW MINE:					
Machine Shop	1	2	(5)	10	
Hoist Control	1	1		10	
Top Tram	1	1		1	
7th Level Engine House Lights	1	1		<u>1</u>	
					22
PRINCETON #2:					
Top Tram Lights	1	1		3	
Stockpile	1	2	(10)	<u>20</u>	
					23
PRINCETON MINE #3:					
Lighting & Bellt System	1	1		<u>1½</u>	
					1½
PRINCETON CENTRAL POWER PLANT:					
Coal Crusher	1	3	(7½)	22½	
Power Plant Lights	1.	1		<u>10</u>	
					32½
PRINCETON CENTRAL SHOPS:					
Power & Lights	1	2	(10)	<u>20</u>	
					20
GWINN DISTRICT OFFICE:					
Lights	1	1		<u>10</u>	
					10
PRINCETON PUMP STATION:					
Power	1	3	(15)	45	
Lights	1	1		<u>5</u>	
					50
GWINN DISTRICT CRUSHER:					
Power & Lights	1	2	(10)	<u>20</u>	
					20
GWINN SUBSTATION:					
Lights	1	1		<u>1/2</u>	
					1/2
AU TRAIN WATER POWER:					
Operators Dwelling Lights	1	1		2	
Control	1	2		2	
Power & Lights, Dixon Location	1	2	(5)	10	
" " " Grand Island	1	2	(5)	10	
Lights, Forest Lake Location	1	1		10	
Chief Operator's Dwelling Lights	1	1		5	
Surge Tank Heaters	1	2	(5)	10	
Dixon Tie Mill	1	3	(3)	9	
Gravel Pit	1	2	(5)	10	
					fwd. <u>1,551</u>

Electrical Department: (Cont'd)

Distribution Transformers (Cont'd)				<u>PHASE</u>	<u>NO.</u>	<u>K.V.A.</u>	<u>TOTAL K.V.A.</u>
	brt. fwd.						1,551
AU TRAIN WATER POWER:							
		brt.	fwd.			68	
		1	1			5	
		1	1			7½	
		1	2	(5)		10	
							90½
CARP RIVER WATER POWER PLANT:							
		1	1			10	
		1	1			20	
		1	2	(1)		2	
							32
HOIST PLANT:							
		1	3	(10)		30	
							30
McCLURE PLANT:							
		1	2	(10)		20	
							20
ESCANABA RIVER PLANT:							
		1	3	(5)		15	
							15
							1,738½
				<u>GRAND TOTAL</u>			
THE CLIFFS ELECTRIC CO.							
		1	1			10	
		1	2	(1)		2	
		1	1			2	
		1	1			1/2	
		1	1			30	
		1	2	(5)		10	
		1	1			10	
		1	1			10	
		1	2	(15)		30	
		1	3	(5)		15	
		1	1			10	
		1	1			2	
		1	1			10	
		1	1			5	
		1	1			10	
		1	1			5	
		1	1			7½	
		1	2	(7½)		15	
		1	1			10	
		1	1			5	
		1	1			1	
		1	1			10	
		1	1			10	
		1	1			3	
		1	2	(5)		10	
		1	1			2½	
		1	1			3	
		1	1			3	
		1	1			2½	
		1	1			3	
		1	1			5	
		1	11	(1½)		16½	
		1	2	(3)		6	
		1	1			1	
		1	1			7½	

MECHANICAL DEPARTMENT
ANNUAL REPORT
YEAR 1932

Electrical Department: (Cont'd)

Spare Transformers on hand December 31st, 1932:

	<u>PHASE</u>	<u>NO.</u>	<u>K.V.A.</u>	<u>TOTAL K.V.A.</u>
ANGELINE MINE:				
General Electric	1	1	<u>1</u>	1
GENERAL STOREHOUSE & BARN:				
Westinghouse from Hoist	3	1	1,250	
General Electric for 440 shaft pump	1	1	100	
" "	1	1	10	
" "	1	1	5	
" " from Republic	1	3	60	
" " " "	1	1	15	
" " " "	1	1	7½	
Western Electric	1	1	5	
General Electric	1	3	(75) 225	
" "	1	1	10	
" "	1	1	10	
" "	1	1	10	
Westinghouse	1	1	15	
General Electric	1	1	5	
Allis-Chalmers	1	1	7½	
General Electric	1	1	10	
" "	1	1	3	
" "	1	1	3	
" "	1	1	2	
Western Electric	1	1	10	
General "	1	1	2	
Westinghouse	1	1	5	
General Electric	1	1	5	
" "	1	1	1	
" "	1	2	(15) 30	
" "	1	1	25	
" "	1	1	<u>1/2</u>	1,831½
ATHENS MINE:				
Spare	1	1	3	
Spare	1	1	<u>3</u>	6
REPUBLIC MINE:				
General Electric	1	1	<u>4</u>	4
GWINN SUBSTATION:				
Spare	1	1	<u>10</u>	10
ESCANABA RIVER PLANT:				
Spare	1	1	<u>10</u>	10
PRINCETON MINE ENGINE HOUSE:				
Surface Lighting	1	1	<u>5</u>	5
<u>TOTAL</u>				1,867½

MECHANICAL DEPARTMENT
ANNUAL REPORT
YEAR 1932

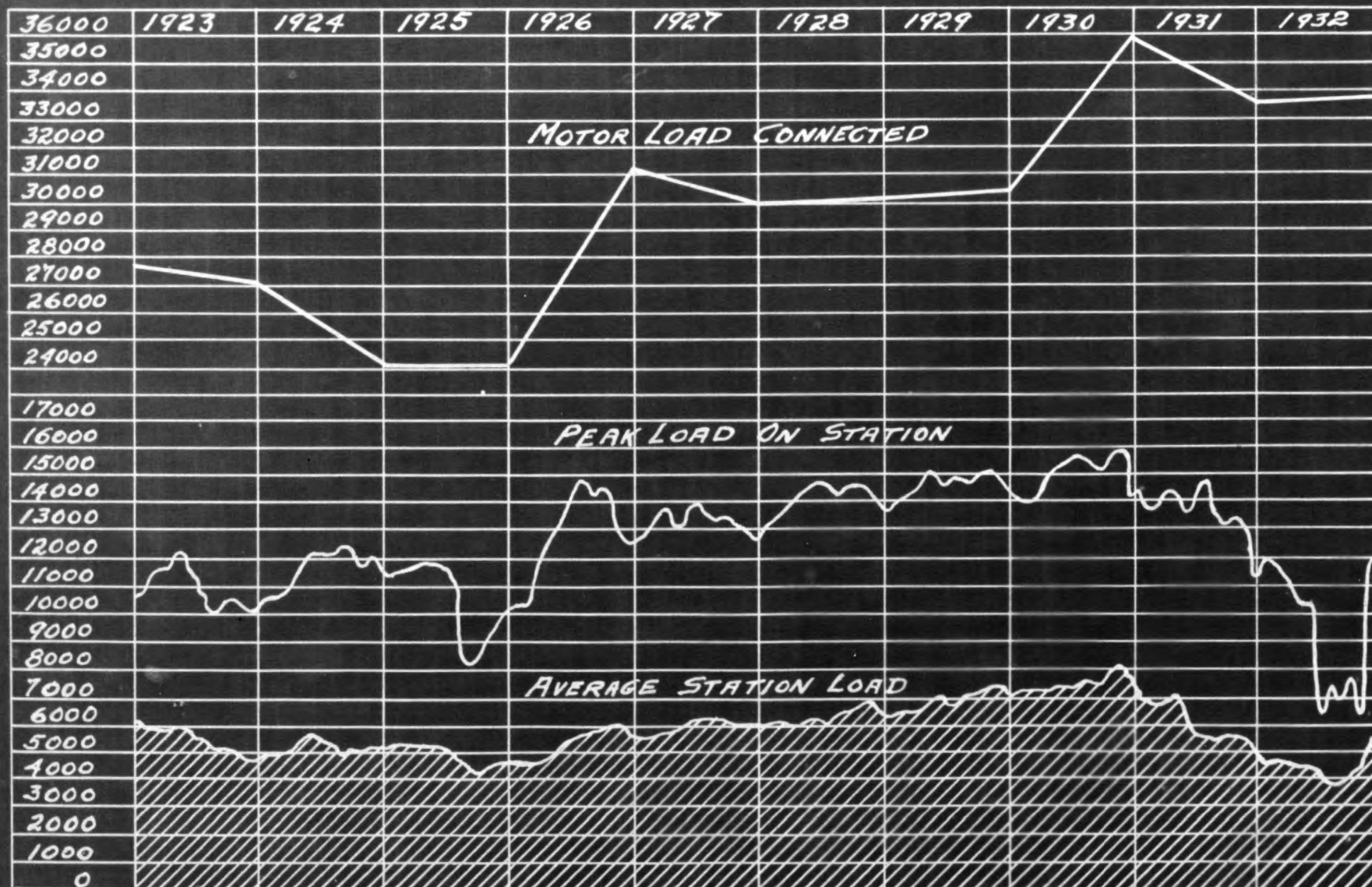
COMPARATIVE TABLES:

<u>YEAR</u>	<u>TONS COAL BURNED</u>	<u>TONS ORE & ROCK HOISTED</u>	<u>CU. FT. AIR USED</u>	<u>CUBIC FT. AIR PER TON HOISTED</u>	<u>GALLONS OF WATER PUMPED</u>
<u>CLIFFS SHAFT MINE:</u>					
1923	2,359	305,727	734,645,710	2,403	377,383,675
1924	2 224	309 996	784 461 617	2 530	388 257 675
1925	2 900	322 928	824 005 547	2 551	327 655 585
1926	1 470	350 604	801 351 000	2 285	379 727 700
1927	957	426 830	766 647 000	1 796	440 517 425
1928	1 008	416 344	804 600 000	1 932	463 182 750
1929	934	451 334	853 572 500	1 891	461 403 025
1930	716	444 511	896 693 000	2 017	446 650 100
1931	560	315 492	592 506 000	1 878	350 061 000
1932	611	92 125	188 127 000	2 042	369 057 075
<u>ATHENS MINE:</u>					
1923	971	246,704	635,535,000	2,576	103,329,157
1924	685	246 352	581 130 000	2 359	116 161 813
1925	789	214 510	468 900 000	2 186	131 715 395
1926	869	226 229	547 650 000	2 421	140 788 044
1927	790	233 221	679 815 000	2 914	127 086 869
1928	827	241 977	710 640 000	2 936	120 178 303
1929	767	344 534	1,154,380,000	3 350	117 645 969
1930	657	384 801	1 060 650 000	2 756	121 785 145
1931	621	254 660	686 750 000	2 696	136 215 501
1932	578	77 639	209 925 000	2 703	205 070 447
<u>MAAS MINE:</u>					
1923	548	228,528	472,220,000	2,066	509,330,141
1924	682	224 291	470 880 000	2 099	522 683 088
1925	670	144 408	372 735 000	2 581	480 918 511
1926	829	245 992	420 930 000	1 711	508 242 996
1927	767	274 586	521 730 000	1 900	534 129 791
1928	657	272 740	679 005 000	2 489	553 419 346
1929	577	347 232	1,067,265,000	3 074	554 452 221
1930	606	443 504	1 374 390 000	3 098	577 702 994
1931	618	332 206	756 405 000	2 076	585 922 823
1932	585	97 295	210 825 000	2 166	576 727 573
<u>NEGAUNEE MINE:</u>					
1923	996	383 914	655,695,000	1,708	582,912,109
1924	1,156	322 705	558 980 000	1 732	502 525 354
1925	1 100	342 824	660 600 000	1 927	436 422 253
1926	1 229	374 004	602 010 000	1 609	440 271 619
1927	1 139	501 516	895 680 000	1 785	603 746 976
1928	1 278	472 458	1,047,240,000	2 216	629 675 383
1929	1 410	569 489	1 123 840 000	1 973	648 591 436
1930	1 254	597 364	1 044 270 000	1 748	556 227 893
1931	885	346 533	620 641 000	1 791	482 294 599
1932	1 092	86 650	209 970 000	2 423	477 360 416

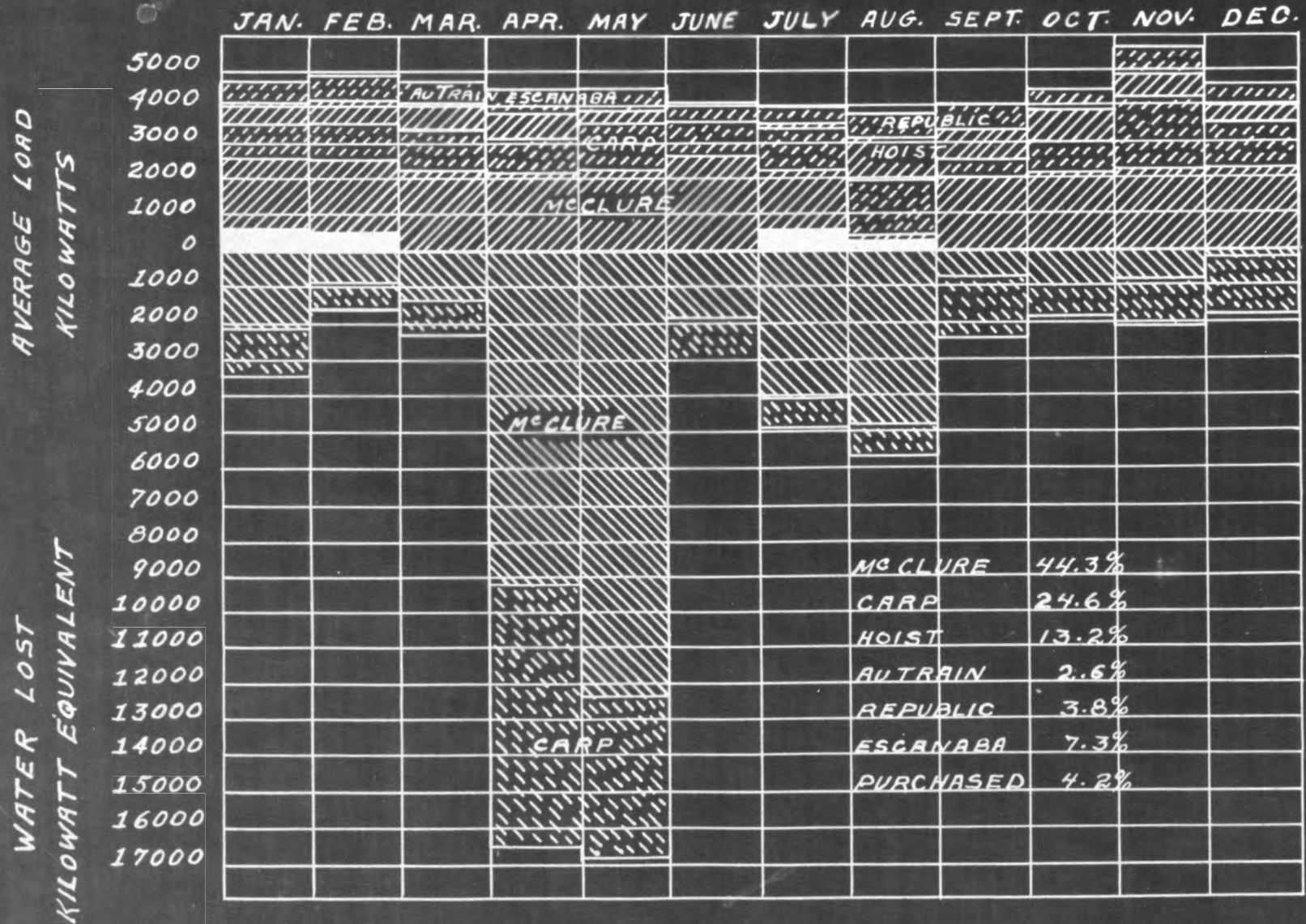
MECHANICAL DEPARTMENT
ANNUAL REPORT
YEAR 1932

COMPARATIVE TABLES: (Cont'd)

<u>YEAR</u>	<u>TONS COAL BURNED</u>	<u>TONS ORE & ROCK HOISTED</u>	<u>CU. FT. AIR USED</u>	<u>CUBIC FT. AIR PER TON HOISTED</u>	<u>GALLONS OF WATER PUMPED</u>
<u>TILDEN MINE:</u>					
1929	625	441,769			
1930	498	287 043			
1931	244	137 010			
1932	38	19 957			
<u>MORRIS-LLOYD MINE:</u>					
1923	1,031	273,124	826,038,000	2,460	267,210,477
1924	894	229 968	381 573 000	1 659	221 874 604
1925	919	258 062	611 836 920	2 371	172 168 518
1926	1 190	291 852	469 265 000	1 608	203 411 761
1927	1 096	333 736	688 545 000	2 062	223 631 596
1928	1 295	364 123	693 360 000	1 904	227 752 992
1929	1 243	456 119	947 560 000	2 077	236 012 174
1930	1 314	490 395	1,058 670 000	2 158	224 981 368
1931	795	364 591	660 645 000	1 812	205 406 448
1932	852	93 671	320 310 000	3 419	213 788 532
<u>GARDNER-MACKINAW MINE:</u>					
1928	336	91,293	214,020,000	2,344	52,760,063
1929	531	119 189	570 635 000	4 703	56 528 157
1930	316	129 321	621 450 000	4 805	74 823 761
1931	152	80 801	489 240 000	6 054	172 438 518
1932	106	24 781	126 945 000	5 122	119 155 845
<u>SPIES-VIRGIL MINE:</u>					
1923	495	19,732			
1924	272	55 953			
1925	313	72 542			
1926	392	92 407			
1927	424	163 911			
1928	366	184 141			
1929	292	168 913			
1930	318	146 027			
1931	256	97 371			
1932	139	14 343			

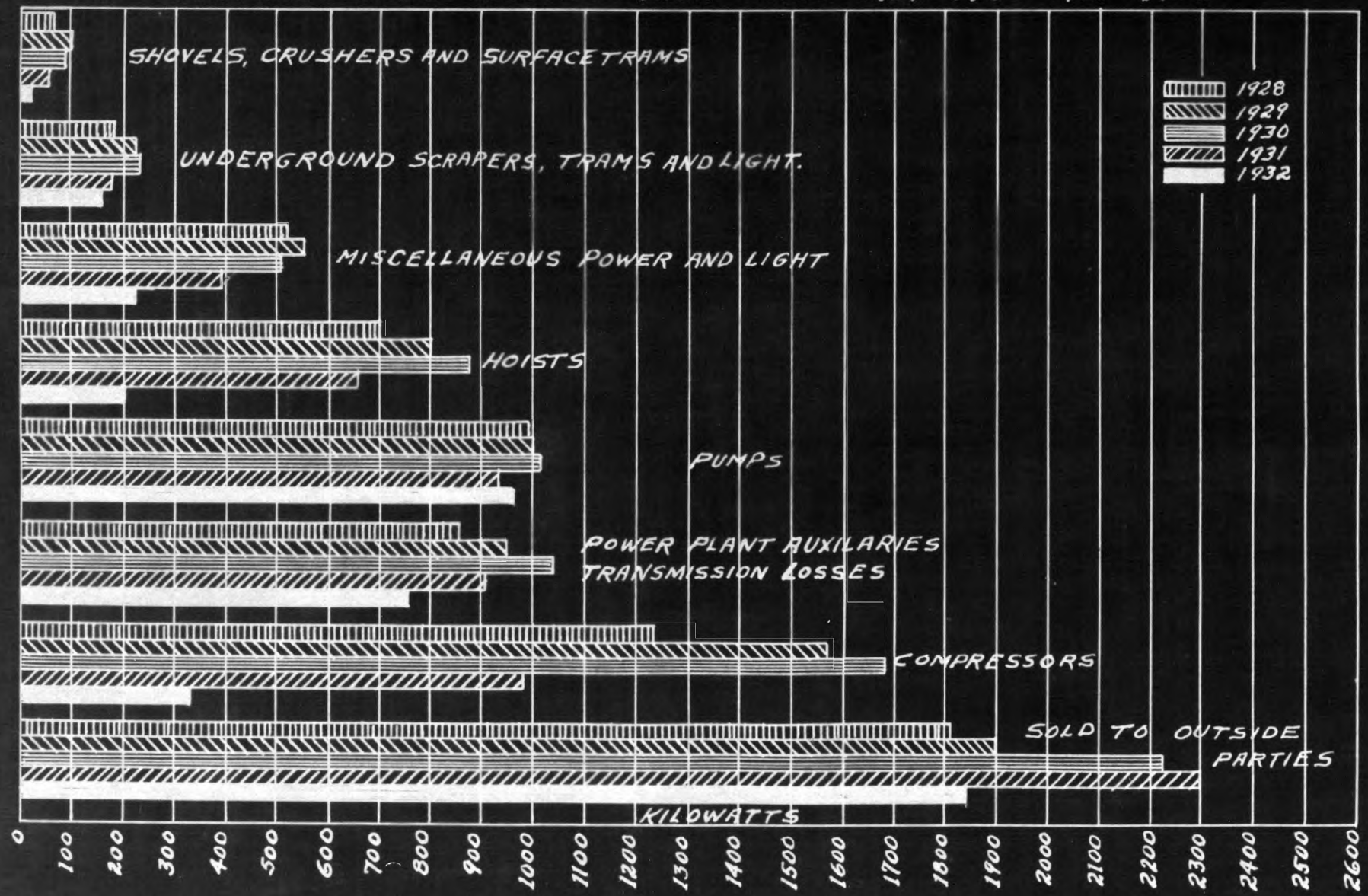


1932

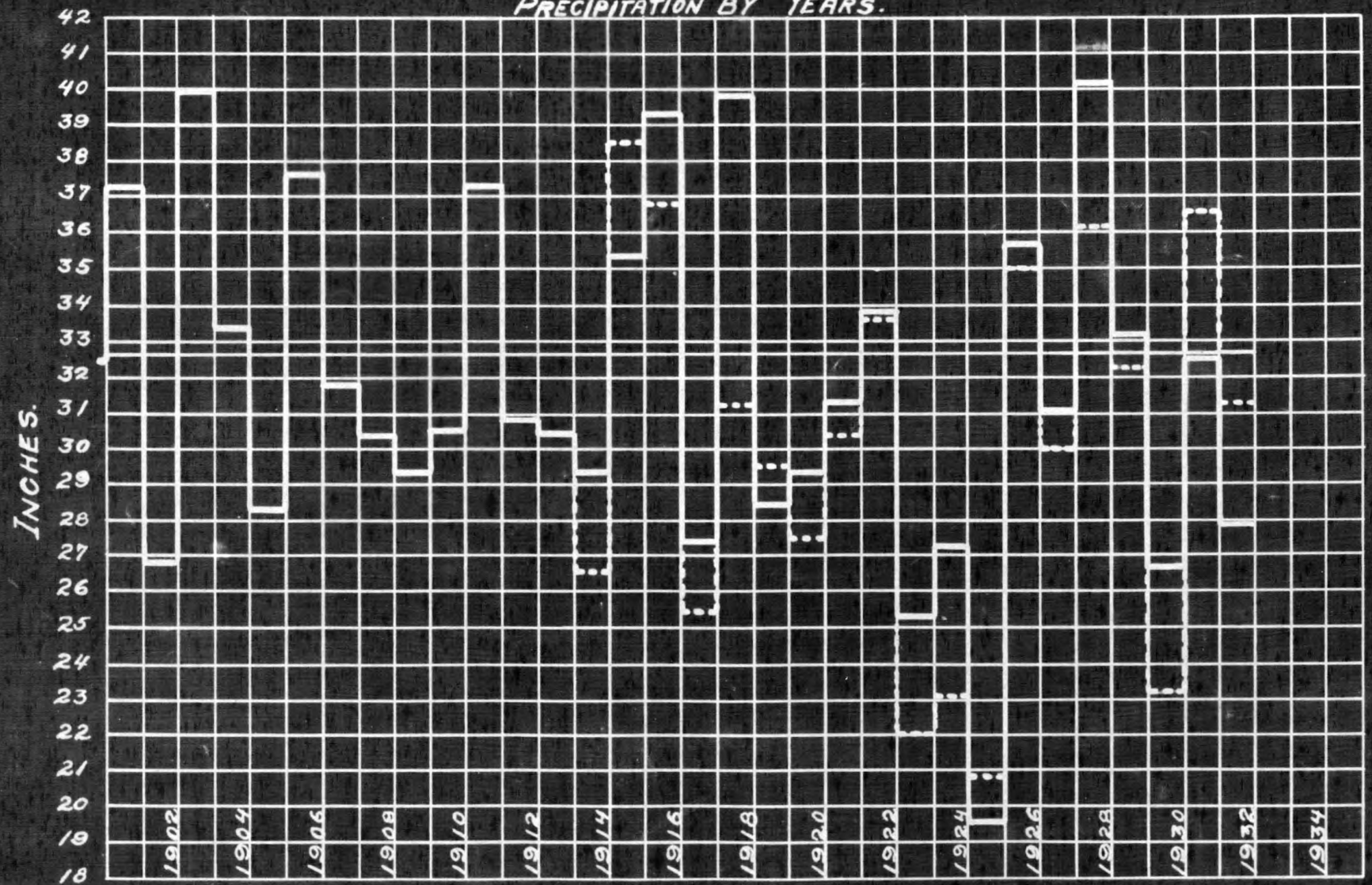


CURRENT MADE BY WATER POWER
 WATER LOST BY OVERFLOW
 POWER PURCHASED

DISTRIBUTION OF ELECTRIC POWER 1928 - 1929 - 1930 - 1931 - 1932

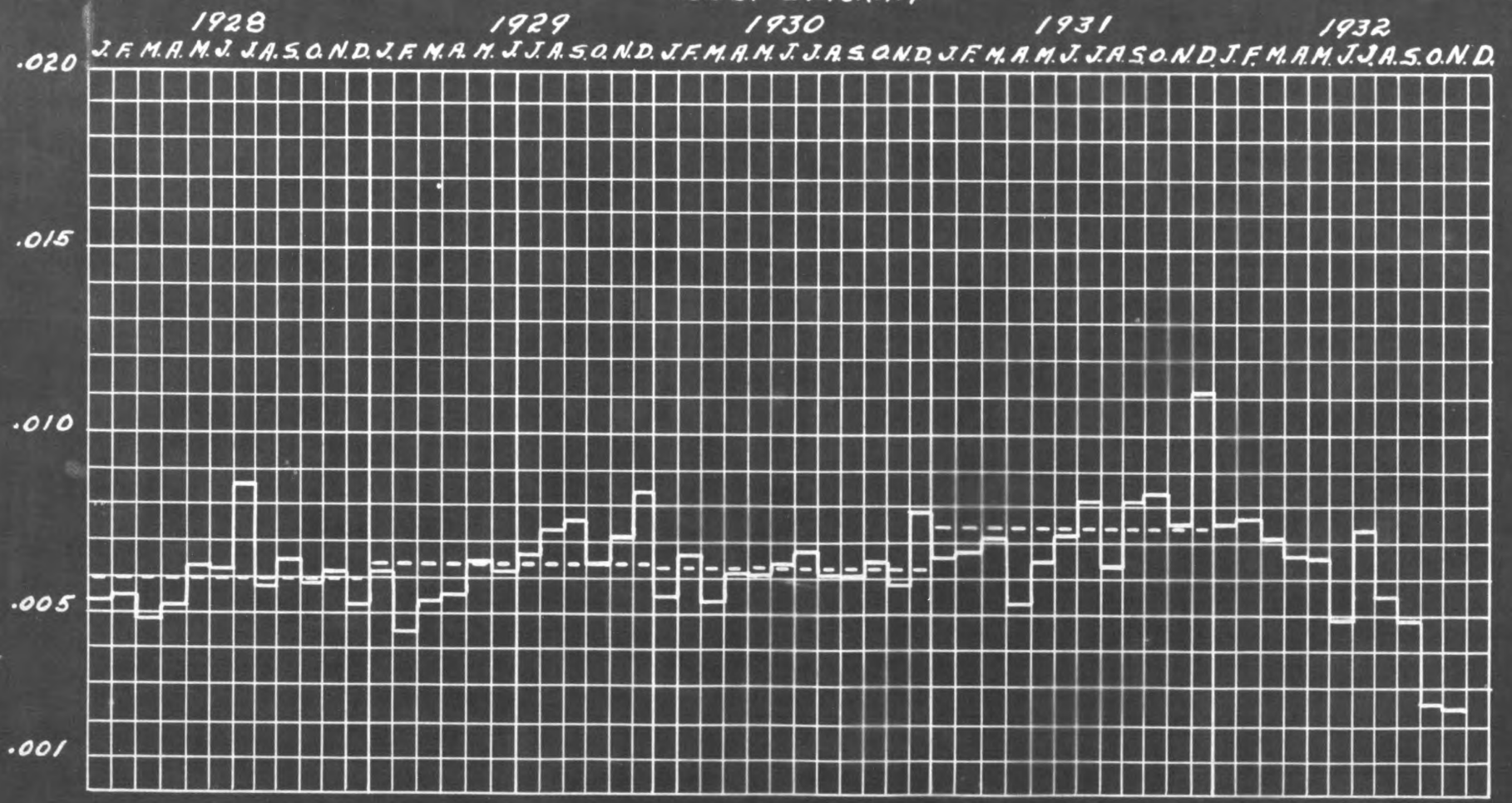


PRECIPITATION BY YEARS.



— MARQUETTE RECORD. - - - ISHPEMING RECORD.

COST DIAGRAM



Safety Department

Annual Report

Year 1932

11. ACCIDENTS
AND
PERSONAL
INJURYa. Fatal Accidents

The Mining Department was exempted from fatal accidents during 1932. While the total number of man shifts worked was less than one half the number for 1931 and approximately one third the number for 1930, yet the perfect record has run eighteen months, which is an unusually good accident record.

The fatal accident statistics covered in Tables I to IV, inclusive, of the 1931 Annual Report, are omitted in this report.

b. Non-Fatal Accidents

A total of nine lost time accidents occurred at the mines and plants. The most serious injury was the loss of an eye, and with this exception, there was no partial or permanent disability injury. The record of the mines appears in the following table:

TABLE I

<u>Mine</u>	<u>Number of Lost Time Accidents</u>
Athens	2
Canisteco-Cliffs	0
Cliffs-Shaft	1
Gardner Mackinaw	0
Maas	2
Morris Lloyd	0
Negaunee	3
Tilden	0
Wade	0
Spies Virgil	0
Miscellaneous	<u>1</u>
	9

These accidents were separated by causes according to the following classification:

Safety Department

Annual Report

Year 1932

11. ACCIDENTS
AND
PERSONAL
INJURYb. Non-Fatal Accidents (Continued)

TABLE II

By handling timber	3
By falls of ground	2
By haulage operation	2
By hand tool	1
By splinter & infection	<u>1</u>
	9

Table III, which follows, gives a classification of these accidents as determined by the Central Safety Committee.

TABLE III

I. Trade Risk (Incidental and Non-Preventable)	2
II. <u>Negligence of Company</u>	
1. Failure to use appliances provided	1
2. Improper method of doing work	1
3. Failure to provide proper place to work	1
III. Negligence of Workmen:	
1. Improper method of doing work	<u>4</u>
	9

c. Safety Inspection:

A monthly inspection of all operations, surface and underground, including the period when the mines were idle, was made by the writer. These inspection tours covered the Company's mines and plants in Michigan only and excludes the Spies Virgil Mine, which was inspected three times.

A committee consisting of Ernest Keast, of the Mechanical Department, T. F. Guy, blacksmith foreman at the Cliffs Shaft Mine, and the writer, inspected the mechanical equipment of the local mines in December. The reports of this Committee were submitted to the Manager.

Safety Department

Annual Report

Year 1932

11. ACCIDENTS
AND
PERSONAL
INJURYc. Central Safety Committee:

This Committee held two sessions in 1932; one in May and another in December.

Special Safety Reports

The various reports and the number of the same that were made by foremen employed at the mines, copies of which are on file in the office of the Safety Department, are listed in Table IV.

TABLE IV

Hoisting Ropes	577
Skip and Cage Roads	198
Ladderways	159
Hoists	87
Cage Catches	66
Fire Equipment	64
	<u>1,151</u>

Safety Conferences

Conferences of foremen were held six times, with an average of 50 men present at each meeting. Supt. W. W. Graff presided as chairman at these conferences, which have for their chief purpose the education of all foremen in the work of accident prevention. Safety standards are revised and as new problems arise they are discussed and safe methods of procedure are adopted, if found practical. More efficient methods of operation is a subject that is being given serious study, when the safety program of a meeting has been covered.

Safety Award

The U. S. Bureau of Mines awarded the Company The Joseph A. Holmes Association's certificate of honor for having operated three underground and three open pit mines more than a year without a lost time accident, with production of more than 2,600,000 tons of ore and rock. The underground mines were the Morris-Lloyd, Cliffs Shaft and Gardner Mackinaw, and the open pits were the Tilden, Holman-Cliffs and Hill Trumbull. These records were made prior to 1932.

Safety Department

Annual Report

Year 1932

11. ACCIDENTS
AND
PERSONAL
INJURYd. First Aid Training

Instruction in first aid to the injured was carried on at the local mines in January and February. On February 29th and March 1st, representatives of the Bureau of Mines examined 25 men who had completed our training course. These men have since received first aid certificates. First aid training was discontinued in March, as there is no necessity for it with the number of trained men employed compared with the total number now working. Few supplies were purchased.

e. Mine Rescue Training

Men were trained in self-contained oxygen apparatus at reasonable periods from January until the mines were closed. During the idle time all apparatus was inspected monthly and maintained fit for use in case of emergency. With the resumption of operations, training on a limited scale will be resumed early in 1933.

f. Department Expense

Salaries and expenditures charged to this department, as tabulated by our Cleveland office, are as follows:

TABLE V

Salaries.. .. .	\$ 1,937.91
Auto Expense.....	255.12
Heat, Light & Power.....	48.65
Postage.....	11.41
Travel & Entertainment.....	24.48
Telephone & Telegraph.....	67.16
General - Unclassified.....	13.45
Total.....	<u>\$ 2,358.18</u>

Respectfully submitted,

Lillian Coustas
Assistant Superintendent

21. ANNUAL REPORT OF THE MINING ENGINEERING DEPARTMENT FOR THE YEAR ENDING
DECEMBER 31, 1932

The books of photographic maps and views of the Company's operations, usually prepared in connection with the Annual Report, have been reduced both in number and size, owing to the fact that all of the Minnesota properties were idle during 1932. No photographing of mine maps was done, the advance for the year being shown on prints made from plates on file. The following book was prepared in duplicate, one for the Cleveland office and one for the Engineering Department:

A. LIST OF ANNUAL REPORT MAP BOOK FOR 1932

The Cleveland-Cliffs Iron Company
Ishpeming, Negaunee, North Lake, Gwinn, Iron River,
and Minnesota Districts.

Most of the special books usually made for partners, fee owners, etc., have been of the Mesaba Range operations, and as these mines did not operate there was nothing to report. Also the usual books for Superintendents have been omitted. The following books were prepared for other parties:

<u>NO. OF COPIES</u>	<u>MINE</u>	<u>FOR WHOM</u>
1.	Athens Mine	Pickands, Mather & Co.,
1.	Negaunee Mine	Bethlehem Steel Corporation

B. Map reports were sent to parties interested in the mines held under lease, in accordance with the provisions of the various leases. These reports consisted of blue prints of the current mine maps showing the work done during the period covered. The following is the list of these reports sent during the year while the mines were operating:

ATHENS MINE

Maps of the Athens Mine were sent monthly to the Cleveland office for Pickands, Mather & Company. Semi-Annual letters were sent to the Agent representing the owners of the portion of the Athens Mine known as the Corbit Lease, that no mining was done in this area during the year. The Mine was idle between June 1 and November 1.

NEGAUNEE MINE

Fourteen sets of annual report prints of the 11th, 12th and 13th levels were sent to the Cleveland office for the fee owners of the Negaunee Mine. The Mine was idle between May 1st and November 1st.

MAAS MINE

Monthly maps of the underground workings of the Roman Catholic Cemetery property were sent to Mr. R. S. Archibald, Negaunee, Engineer in charge. Mine was idle between June 1st and November 1st.

MORRIS LLOYD MINE

Monthly maps of the underground workings of that portion of the Morris Mine on the Moore and Chase leases were sent to Mr. R. S. Archibald, Negaunee, Engineer in charge. The Morris Lloyd Mine was idle June 1st to the end of the year, except development in the Lloyd Mine after November 1st.

SPIES VIRGIL MINE

Five sets of maps of the mining operations of the Spies Virgil Mine were sent to the lessors at the end of the first and last quarter during the year. Three sets of analysis and two sets of level maps have been sent monthly to the Republic Steel Corporation, showing workings on the Sherwood property, besides three sets for the 1st quarter. The Spies Virgil Mine was idle between March 1st and November 1st and no work was done on the Sherwood property after March 1st.

MACKINAW MINE

One set of monthly maps was sent to the lessors.

C. REMARKS ON THE ABSTRACTS AND VARIOUS SUBJECTS FOR THE YEAR 1932.

The following is a summary of the various documents entered on the records of the Engineering Department during the year. Copies of some of these documents have been placed on file in the Department:

	NUMBER RECEIVED	LAST FILE NUMBER
Land Offers	8	1879
Miscellaneous Documents	17	1199
Easements	37	375
Rights of Way	0	219
Water Rights	0	57
Surface Leases	157	3595
Applications for Sale	7	124
Sales	46	546
Tax Histories	8	567
Legal Opinions	0	193

LAND OFFERS

These have all been reported upon by the Geological Department.

MISCELLANEOUS DOCUMENTS

These documents cover various rights received or granted on mineral or mining lands.

EASEMENTS

Twenty three of these are franchises granted by various political bodies for transmission lines, copies of which were received during the year for the files. The other fourteen easements cover transmission line rights granted to perfect title to the rights of way.

SURFACE LEASES

These leases cover rights granted on any of the Company lands and were submitted by the Land Department for approval of the Mining Department.

APPLICATIONS FOR SALE AND SALES

These originated in the Land Department and cover Company lands off the mineral areas.

TAX HISTORIES

The additions received during the year cover lands that may some time be wanted for storage basin purposes.

ABSTRACTS OF TITLE

What little work has been done on the record of Abstracts during the year, has been of current interest relative to title or rights.

MICHIGAN STATE TAX COMMISSION

The usual set of maps and estimates of ore reserves of the various Michigan mines, were prepared and sent to the Commission before February 1st.

TAXES

The tax list of the Mining Department and Cliffs Power & Light Company lands were prepared and sent to the Land Department, Tax Department, Hibbing District office and Mr. O. D. McClure. The delinquent tax list of the various Michigan counties in which the Mining Department and Cliffs Power & Light Company are interested, were checked and reported upon. The most important question relative to delinquent taxes, is the matter of handling those covering lands crossed by the transmission line of the Cliffs Power & Light Company. Each parcel of land is considered by itself, and referred to the Legal Department for final decision.

LIST OF LANDS

The list of holdings of the Cliffs Power & Light Company was completed early in the year and a report submitted.

MISCELLANEOUS

The following comments cover some of the work done by the Engineering Department during the year that is not mentioned elsewhere in this report.

GARDEN LOTS

Over eight hundred garden lots were staked out in Negaunee, Ishpeming and North Lake Districts. These gardens were approximately 1/5 of an acre in size.

WOOD LOTS

The permits given by the Company to its employees and others to cut fire wood necessitated the laying out of areas for allotment. Inspections were made of the available wooded areas, and estimates made of the number of cords available. Parcels, comprising approximately one acre, were blazed out through the woods. There were about 1500 parcels blocked out in the Ishpeming, Negaunee and North Lake Districts.

JONES & LAUGHLIN STOCKPILE ORE LEASES

Estimates of stockpile ore for Jones & Laughlin Ore Company were made and the areas containing definite tonnages were laid out and witnessed in the field. These areas contained the following tonnages of ore:

GRADE	TONNAGE
Maas	150,000 tons
Lloyddale	103,447 "
Morris	100,000 "

All of the estimates and field work were done with and approved by Mr. J. H. Trebilcock, local engineer for the Jones & Laughlin Company.

D. THE FORCE

The curtailment of the Mining Department operations extended to the Engineering Department, two members of the staff being laid off on January 31st and five more on May 30th, and one returning on June 1st. On January 1st there were nine in the Department, on December 31st there were three.

The following table shows the personnel of the Department during the year, their position, date of employment, term of service and period employed during 1932:

NAME	POSITION	SERVICE		EMPLOYED 1932
		ENTERED	YEARS	
R. J. Chenneour	Asst. Chief Eng.	Jan. 1903	30	12 months
H. O. Moulton	Engineer	Apr. 1910	21 $\frac{3}{4}$	7 " (1)
J. Trosvig	"	June 1911	19 $\frac{3}{4}$	5 " (2)
T. A. Miller	"	Jan. 1916	16 $\frac{1}{2}$	5 " (3)
A. Minnear	" & helper	June 1917	13-1/3	1 " (4)
K. C. Pellow	"	Jan. 1918	14 $\frac{1}{2}$	5 " (3)
C. W. Allen	"	June 1925	7	5 " (3)
F. J. Haller	"	June 1930	1-2/3	1 " (5)
E. A. Allen	Helper	Sept. 1931	3/4	5 " (6)

- (1) Efficiency Engineer between June 15, 1931 and June 1, 1932.
- (2) Laid off June 1, 1932, also between Oct. 15, 1914 and Dec. 1, 1915.
- (3) Laid off June 1, 1932
- (4) Laid off Feb. 1, 1932 and also between June 7, 1921 and October 12, 1922
- (5) Laid off Feb. 1, 1932
- (6) Transferred from Geological Department in 1931. Laid off June 1, 1932.

The following table shows total working days, days worked, days of sickness and vacation for all men in the Department during the year. Sundays and holidays are not included in vacation time.

NAME	WORKING DAYS	DAYS WORKED	DAYS OVERTIME	DAYS SICK	DAYS ABSENT
R. J. Chenneour	272	246½	5½	12½	18½
H. O. Moulton	160½	164½	10	3½	2½
J. Trosvig	121½	123	1½	0	0
T. A. Miller	111½	114	4½	2	0
K. C. Pellow	111½	106½	1½	6½	0
C. W. Allen	111½	109	1½	4	0
F. J. Haller	20	20½	½	0	0
A. Minnear	20	20	0	0	0
E. A. Allen	111½	112	1½	1	0

The following table shows the distribution of time spent underground, in the field or office, during the year:

NAME	UNDERGROUND	FIELD	OFFICE	TOTAL
R. J. Chenneour	25	70	151½	246½
H. O. Moulton	26½	98	40	164½
J. Trosvig	24	9	80	123
T. A. Miller	22½	16	75.5	114
K. C. Pellow	33½	6	67	106½
C. W. Allen	27½	10½	71	109
F. J. Haller	4	0	16½	20½
A. Minnear	0	5	19½	20
E. A. Allen	31	12	69	112
TOTAL	204	222	590	1016
%	20%	21.8%	58.2%	100%

The work performed by each man is briefly described as follows:

Carl Brewer, Chief Mining Engineer, looked after all the routine of the office, entering upon the records all documents passing through the office, etc. He made up the tax lists of lands under the Mining Department and held by the Cliffs Power & Light Company and looked after the delinquent taxes reported upon lands in which the latter Company is interested. Owing to the increased number of lands on the delinquent tax lists each year, it is requiring more attention each year to protect the Power Company's interests. He did some work on the abstracts of title to Company lands, bringing them up to date and preparing the maps to accompany them, especially regarding the Cliffs Power & Light Company. The curtailment of the office force has delayed the completion of this work.

He assisted in the staking out of garden lots early in the summer and later looking over and blazing out the wood lots. He supervised and assisted in the stockpile ore estimates for the Jones & Laughlin Ore Company, and later staked the areas in the field.

When the mines resumed operations on November 1st, he looked after the engineering work at the Lloyd, Mackinaw-Gardner and Spies Virgil Mines, besides assisting in the surveys at the other mines.

Reginald J. Cheneour, Asst. Chief Mining Engineer, was engaged in completing the list of lands of the Cliffs Power & Light Company until April 1st. During April he did the engineering work at the Negaunee Mine, the property closing on May 1st. Early in May he made the estimate of ore in stock at the plant of the Algoma Steel Corporation at Sault Ste. Marie, Ontario, Canada. He laid out garden lots during May and June and for the rest of the summer was engaged mostly in connection with wood lots. He spent some time preparing sewer and water line maps and profiles of the Cleveland-Cliffs Iron Company's 2nd Addition to the City of Negaunee, but was unable to complete this work. He did some engineering work at the Carp River, Escanaba, Au Train and McClure Power Plants. He made the stockpile ore estimate for Jones & Laughlin Ore Company. On November 1st he assumed charge of the engineering work at the Athens and Cliffs Shaft Mines.

The following table shows the distribution of his time during the year:

PROPERTY	UNDERGROUND	FIELD	OFFICE	TOTAL
Athens Mine	4	3	8	15
Cliffs Shaft Mine	5	0	13½	18½
Maas Mine	4½	4	10	18½
Mackinaw-Gardner	0	0	1	1
Morris Lloyd Mine	3½		4½	8
Negaunee Mine	8	½	21½	30
Spies Virgil Mine	0	0	1½	1½
Cliffs Power & Light Co.		8½	45	53½
Mkscellaneous		54	46½	100½
TOTAL	25	70	151½	246½
%	10.1%	28.4%	61.5%	100%

Henry O. Moulton returned to the Engineering Department on June 1st. Practically all of his time from then until October 19th was in connection with the wood cutting operations under Mr. C. J. Stakel. During November and December he looked after the engineering work at the Maas and Negaunee Mines, and assisted with those at the other mines, especially the Lloyd Mine.

The following table shows the description of his time for the last seven months of the year:

PROPERTY	DAYS			TOTAL
	UNDERGROUND	FIELD	OFFICE	
Athens Mine		1½	1	2½
Maas Mine	10	1½	11½	23
Morris Lloyd	9½	2½	3	15
Negaunee Mine	7	1	7½	15½
Miscellaneous	0	91½	17	108½
TOTAL	26½	98	40	164½
%	16.1%	59.6%	24.3%	100%

John Tresvig, Engineer, was in charge of the engineering work at the Morris Lloyd Mine until it was closed down on June 1st, and at the Spies Virgil Mine between February 1st and its closing on March 1st. He made the Tax Commission estimate of the Morris Lloyd Mine. He commenced posting the North Lake surface maps to bring them up to date, and assisted in laying out garden lots at North Lake. He was laid off June 1st. He was engaged for 9 days in September to assist on estimates of ore, etc., in connection with the lease of the Morris Mine to the Inland Steel Company.

The following table shows the distribution of his time for the first five months of the year:

PROPERTY	DAYS			TOTAL
	UNDERGROUND	FIELD	OFFICE	
Morris Lloyd Mine	31	½	77	108½
Spies Virgil Mine	3	0	3	6
Miscellaneous	0	8½	0	8½
TOTAL	34	9	80	123
%	27.7%	7.3%	65.0%	100%

Tom a Miller, Engineer, took care of the engineering and survey work at the Cliffs Shaft until it closed down June 1st. He did some special work in compiling data for Mr. Stakel and completed a map of the holdings of the Michigan Mineral Land Company that had been started by the Geological Department. He made the ore reserve estimate of the Cliffs Shaft Mine for the Tax Commission and assisted in the Lloyd Mine 6th Level survey. In May he assisted in the ore estimate at the Algoma Steel Corporation, Sault Ste. Marie, and in laying out garden lots in the Ishpeming District. He was laid off June 1st.

The following table gives the distribution of his time for the first five months of the year:

PROPERTY	DAYS			TOTAL
	UNDERGROUND	FIELD	OFFICE	
Cliffs Shaft Mine	20	3½	59½	83
Maas Mine	½	0	0	½
Morris Lloyd Mine	2	0	0	2
Miscellaneous	0	12½	16	28½
TOTAL	22½	16	75½	114
%	20.0%	14.0%	66.0%	100%

Kenneth C. Pellow, Engineer, did the engineering work at the Maas Mine until June 1st when it was closed, and at the Negaunee Mine until April 1st. He made the ore reserve estimates of both these mines for the Tax Commission. He assisted in a check survey at the Mackinaw-Gardner Mine between the 7th and 8th levels. During the latter part of May he laid out garden lots in the Negaunee District and assisted Mr. Graff in fertilizer distribution. He was laid off June 1st.

The following table shows the distribution of his time for the first five months of the year:

PROPERTY	DAYS			TOTAL
	UNDERGROUND	FIELD	OFFICE	
Maas Mine	25	½	46	71½
Mackinaw-Gardner	1	0	1	2
Negaunee Mine	7½	0	20	27½
Miscellaneous	0	5½	0	5½
TOTAL	33½	6	67	106½
%	31.5%	5.6%	62.9%	100%

Charles W. Allen, Engineer, had charge of the engineering work at the Athens and Mackinaw-Gardner Mines until they were shut down on June 1st. He made the ore reserve estimates of both these mines for the Tax Commission. At the Mackinaw-Gardner Mine he made special surveys in connection with the extension of the incline shaft from the 7th to the 8th levels, and he ran a check survey at the Lloyd Mine on the 6th Level to check the drift going toward the Lloyd shaft. He finished a map of the gold bearing mineral district north of Ishpeming that had been started by the Geological Department. He laid out garden lots in both the Negaunee and Ishpeming Districts. He was laid off June 1st.

The following table shows the distribution of his time for the first five months of the year:

PROPERTY	DAYS			
	UNDERGROUND	FIELD	OFFICE	TOTAL
Athens Mine	12	1½	35	48½
Cliffs Shaft Mine	0	0	½	½
Mackinaw Gardner	13½	0	22½	36
Morris Lloyd Mine	2	0	0	2
Negaunee Mine	0	0	1½	1½
Tilden Mine	0	½	1	1½
Geological Dept.	0	0	5½	5½
Cliffs Power & Light Co.	0	0	2	2
Miscellaneous	0	8½	3	11½
TOTAL	27½	10½	71	109
%	25.2%	9.6%	65.2%	100%

F. Joseph Haller, Engineer, did the engineering at the Spies Virgil Mine and the Sherwood property during the month of January. He made the ore reserve estimate of the Spies Virgil Mine for the Tax Commission. He was laid off February 1st.

The following table shows the distribution of his time for the one month:

PROPERTY	DAYS			
	UNDERGROUND	FIELD	OFFICE	TOTAL
Spies Virgil Mine	2	0	12½	14½
Sherwood Property	2	0	4	6
TOTAL	4	0	16½	20½
%	20.0%	0	80.0%	100%

Archibald Minnear, Engineer and helper, did miscellaneous office work during January, helping with the Annual Report maps, Cliffs Power & Light Company abstract maps, and other regular office work. He was laid off February 1st.

The following table shows the distribution of his time for the one month:

PROPERTY	DAYS			
	UNDERGROUND	FIELD	OFFICE	TOTAL
Athens Mine	0	0	1½	1½
Cliffs Shaft Mine	0	0	2	2
Maas Mine	0	0	2	2
Morris Lloyd Mine	0	0	1½	1½
Negaunee Mine	0	½	3½	4
Sherwood Property	0	0	1	1
Cliffs Power & Light Co.	0	0	8	8
TOTAL	0	½	19½	20
%	0	0.2%	99.8%	100%

Ernest A. Allen, Helper, made blue prints in the office and assisted in all surveys underground and in the field. He spent four days in the field mapping the gold bearing mineral area north of Ishpeming for the Geological Department. He was laid off June 1st.

The following table shows the distribution of his time for the first five months of the year:

PROPERTY	DAYS			TOTAL
	UNDERGROUND	FIELD	OFFICE	
Athens Mine	1½	0	11½	13
Cliffs Shaft Mine	11	½	10	21½
Maas Mine	2½	½	11½	14½
Mackinaw Gardner	11	0	5	16
Morris Lloyd Mine	3½	½	10½	14½
Negaunee Mine	1½	0	12½	14
Spies Virgil Mine	0	0	2½	2½
Cliffs Power & Light Co.	0	0	5	5
Geological Department	0	4	½	4½
Miscellaneous	0	6½	0	6½
TOTAL	31	12	69	112
%	27.7%	10.7%	61.6%	100%

E. DISTRIBUTION OF TIME

The following table shows the distribution of time spent underground, in the field and office for the various mines:

PROPERTY	DAYS			TOTAL
	UNDERGROUND	FIELD	OFFICE	
Athens Mine	17½	6	57	80½
Cliffs Shaft Mine	36	4	85½	125½
Maas Mine	42½	6½	81	130
Mackinaw-Gardner Mine	25½	0	29½	55
Morris Lloyd Mine	51½	3½	96½	151½
Negaunee Mine	24	2	66½	92½
Spies Virgil Mine	5	0	19½	24½
Sherwood Property	2	0	5	7
Tilden Mine	0	½	1	1½
Cliffs Power & Light Co.	0	8½	60	68½
Geological Department	0	4	½	4½
Miscellaneous	0	187	88	275
TOTAL	204	222	590	1016
%	20.1%	21.8%	58.1%	100%

F. COSTS

The following table shows the distribution of time and the cost to the various mines and other work for the last three years:

MINES, ETC	1930			1931			1932			PERCENT		1932 COST PER TON FOR LABOR AND SUPPLIES
	LABOR	TIME IN DAYS	PER CENT	LABOR	TIME IN DAYS	PER CENT	LABOR	TIME IN DAYS	PER CENT	INCREASE	DECREASE	
Athens	\$1,994.90	223 $\frac{1}{2}$	8.0	\$1,736.05	190 $\frac{1}{2}$	7.8	\$ 660.75	84	8.0	0.2		.011
Maas	2,268.90	225 $\frac{1}{2}$	9.1	2,112.45	268	10.9	987.30	129	12.3	1.4		.012
Negaunee	2,179.93	216 $\frac{1}{2}$	8.8	1,600.38	178	7.3	759.04	92 $\frac{1}{2}$	8.7	1.4		.010
Cliffs Shaft	2,988.01	322	12.0	3,382.40	368 $\frac{3}{4}$	15.3	993.65	127	12.0		3.3	.015
Holmes	1,408.07	145 $\frac{1}{2}$	5.6	0	0		0	0				
Tilden	1,388.29	152	5.5	436.46	45	1.9	11.17	1 $\frac{1}{2}$	0.1		1.8	.001
Morris Lloyd	3,471.97	345 $\frac{1}{2}$	14.0	3,255.11	345 $\frac{1}{2}$	14.8	1,087.39	155 $\frac{1}{2}$	14.8			.016
Republic	5.91	$\frac{1}{2}$	0	0	0		0	0				
Spies Virgil	1,420.83	142	5.1	1,859.15	257	8.4	188.18	24 $\frac{1}{2}$	2.3		6.1	.016
Gardner Macdonaw	1,815.08	190	7.2	1,428.75	159	6.4	410.06	56	5.3		1.1	.020
Total	\$18,941.89	1,963	75.9	\$16,108.75	1,811 $\frac{1}{2}$	72.8	\$5,177.25	670	63.5		9.3	
GWINN DISTRICT												
Francis	\$ 37.50	5	0.1	0	0		0	0				
Stephenson	43.27	4 $\frac{1}{2}$	0.2	\$ 23.24	2 $\frac{1}{2}$	0.1	0	0				
Gwinn Townsite	43.80	4 $\frac{1}{2}$	0.2	0	0		0	0				
Total	\$ 124.67	14	0.5	\$ 23.24	2 $\frac{1}{2}$	0.1	0	0				
CLIFFS POWER & LIGHT COMPANY												
Miscellaneous	\$ 671.40	80 $\frac{1}{2}$	2.7	\$ 1,724.41	150 $\frac{1}{2}$	7.8	\$ 606.96	56 $\frac{1}{2}$	5.3		2.5	
E&A #9, Power line to Inland Quarry	500.50	61 $\frac{1}{2}$	2.0	0	0		0	0				
E&A #10, Autrain Storage Basin	2,958.66	299	11.8	351.80	45	1.6	0	0			1.6	
E&A #12 Power line to Greenwood Mine	234.22	28 $\frac{1}{2}$	1.0	0	0		0	0				
Surveys	0	0		0	0		44.71	6 $\frac{1}{2}$	0.7	0.7		
TOTAL	\$ 4,364.78	469 $\frac{1}{2}$	17.5	\$ 2,076.21	195 $\frac{1}{2}$	9.4	651.67	63	6.0		3.4	
MESABA DIST.												
Alexandria Mine	\$ 5.90	1	0	\$ 7.42	1 $\frac{1}{2}$	0.1	0	0			0.1	
Canisteo Cliffs	38.26	5	0.2	7.42	1 $\frac{1}{2}$	0	0	0				
Dean	6.50	$\frac{1}{2}$	0	0	0		0	0				
Hibbing District	2.96	$\frac{1}{2}$	0	0	0		0	0				
Hill Trumbull	50.51	7 $\frac{1}{2}$	0.2	14.23	2 $\frac{1}{2}$	0.1	0	0			0.1	
Holman Cliffs	30.01	4 $\frac{1}{2}$	0.2	7.42	1 $\frac{1}{2}$	0	0	0				
Wade	55.81	6	0.2	7.42	1 $\frac{1}{2}$	0	0	0				
Total	\$ 189.95	25	0.8	43.91	8 $\frac{1}{2}$	0.2	0	0			0.2	
SURVEYS & CONTOURS												
Summit Exploration	71.49	7	0.3	0	0		0	0				
Ishaming Gold Dist.	0	0	0	0	0		66.36	10	1.0	1.0		
E&A 2nd Addn. Negaunee	329.63	51 $\frac{1}{2}$	1.3	2,565.44	231	10.7	87.88	11	1.0		9.7	
Sherwood	0	0		77.50	11	0.4	49.67	7	0.6	0.2		
Total	401.12	58 $\frac{1}{2}$	1.6	2,442.94	242 $\frac{1}{2}$	11.1	203.91	28	2.6		8.5	
MISCELLANEOUS												
Abstracts	36.36	5	0.2	180.05	15	0.8	9.31	1 $\frac{1}{2}$	0.1		0.7	
City of Negaunee, Miscel.	72.80	13 $\frac{1}{2}$	0.3	0	0		0	0				
Ore Estimate	221.30	18	0.9	67.83	6	0.3	0	0			0.3	
Relief Exp. - Gardens	0	0		0	0		476.14	67 $\frac{1}{2}$	6.4	6.4		
-Woods Op.	0	0		0	0		653.90	112 $\frac{1}{2}$	10.7	10.7		
Michigan Mineral Land Co.	0	0		0	0		93.33	12 $\frac{1}{2}$	1.2	1.2		
Algoma Steel Corp. Stockpile	0	0		0	0		141.01	17 $\frac{1}{2}$	1.6	1.6		
Burden Expense	498.79	76	2.0	880.80	140 $\frac{1}{2}$	3.9	394.23	76 $\frac{1}{2}$	7.3	3.4		
Federal Taxes	0	0		100.29	9	0.5	32.64	5 $\frac{1}{2}$	0.5			
Miscellaneous	92.41	16 $\frac{1}{2}$	0.3	191.18	27	0.9	8.57	1	0.1		0.8	
Total	921.66	129	3.7	1,420.18	197 $\frac{1}{2}$	6.4	1,809.13	294 $\frac{1}{2}$	27.9	21.5		
GRAND TOTAL	\$ 24,944.07	2,659	100.0	\$22,115.20	2,457 $\frac{1}{2}$	100.0	\$ 7,841.96	1,055 $\frac{1}{2}$	100.0			

H. AUTOMOBILES

The Ford Sedan and Ford Station Wagon were used by the Department the entire year. The following mileage was covered by these two cars:

CAR	MILES
Sedan	5,849
Station Wagon	3,384

I. MINES

Every working place in all the soft ore mines was visited every week by the engineer in charge and monthly blue print reports made of the advances during the time the mines were operated. The Cliffs Shaft Mine, the Spies Virgil and the open stopes of the Morris Lloyd Mine were only surveyed once a month. Prior to the shutting down of the mines, plans were prepared showing what development work or areas to be mined was to be done during the idle period

Special surveys at the mines for specific work are mentioned briefly as follows:

Maas Mine: The surveys on the 4th and 5th Levels were checked through a raise in the ore body.

Mackinaw-Gardner Mine: Check surveys were run between the 7th and 8th Levels through the winze, for putting up a small raise in the incline shaft. The raise holed November 18th and stripping of full size shaft commenced.

Morris Lloyd Mine: Two check surveys were run on the 6th Level from the Morris Shaft for the drift to the location of the Lloyd shaft. Also a complete loop was run from the Lloyd shaft on the 4th Level to the 6th Level plumbing the Morris Shaft between these lines. Lines were given for the shaft raise at the end of the year.

The coal piles at the various mines were estimated as of May 1st and that of the Morris Mine as of December 31st.

J. MISCELLANEOUS

The iron pins at the corners of the Cleveland-Cliffs Iron Company's 2nd Addition to the City of Negaunee were tied in to the regular Maas surveys, as the original survey of the plat had started from pins not connected with the mine surveys, and data taken of the mine surface to bring the maps up to date.

No surveys of ore in stock were made during the year. The estimates of last year were taken with the proper additions or subtractions for the ore stocked or shipped.

Carl Brewer
CHIEF MINING ENGINEER

CB:DP

PENSION DEPT. ANNUAL REPORT YEAR 1932

11.
a. Workmen's Compensation

The direct work of the Compensation Department has been taken care of by Walter E. Johnson, as has been done since 1926.

The regular plan of seeing an injured man just as soon as possible has been followed and this has served to maintain the most friendly relations with the men making it possible to readily secure their signatures to the compensation agreements and keep them satisfied with the provisions of the Compensation Laws.

The payments have been made promptly, the checks being delivered to them at the office, when they are able to come for them, for the Ishpeming mines or delivered to them at the Hospitals or at their homes when they are unable to be out.

In the outside districts the Mine Clerks do this work for us.

In many cases this year while the mines were operating on a reduced basis the compensation paid is more than the men would receive on their return to work, but there has been very little difficulty in getting them to return to work when the Physicians have reported them able to do so and there was work for them.

The compensation based on the Michigan Law is 66-2/3 per cent. of the weekly wage which is six times the daily wage, regardless of the number of days regularly employed. In Minnesota the minimum weekly wage to be considered is five and one-half times the daily wage.

The men have shown a good spirit in returning to work just as soon as possible.

The greatly reduced number of accidents will result in reduced compensation costs which will be reflected in total costs as the old cases are ended, which run for 300 weeks in the case of a fatality and for 500 weeks for total disability.

Following is a list of cases requiring special attention during the year:

FRANK VOEGTLIN - REPUBLIC MINE ACC. REP. #740

This man was injured in 1925 and the case was closed early in 1927. In January 1932 he petitioned for additional compensation, but when we appeared ready to contest the case at a hearing on January 19, 1932, his attorney withdrew his petition.

ALBERT JOHNSON - MAAS MINE ACC. REP. #448

Johnson suffered a ruptured ear drum due to a blast on April 1, 1930. He was disabled six weeks and then returned to work. In June 1931 his ear again commenced to trouble him and he was sent to Ann Arbor where it was found that he was suffering from a radical mastoid and an operation was performed. In May 1932 we felt that he had sufficiently recovered to return to work, and as he persistently refused to try to work, we petitioned to stop compensation. The matter was heard on September 6, 1932 and decided in our favor.

PENSION DEPT. ANNUAL REPORT YEAR 1932

11.
a. Workmen's Compensation (continued)

ALFRED BESSOLA - NEGAUNEE MINE

Bessola's wife divorced him in May 1930, and she was awarded the custody of the seven minor children, with alimony at a stated monthly rate. Bessola left our employ in July 1930 and on October 10th committed suicide at Gwinn. For several months prior to his death he exhibited signs of mental disorder. During the two year period from 1930 to 1932 Mrs. Bessola wrote frequent letters to various officials of the Company at first intimating and later insisting that Alfred's condition and resultant death was due to the accumulative action of several accidents which he had sustained while in our employ over a period of several years. Finally, in June 1932, a petition for compensation was filed on behalf of the seven minor children, they relying on an accident which occurred in February 1930 to sustain their claim. This injury was a slight scalp wound caused when a small piece of ore fell a distance of four or five feet and striking him on the head. The matter came on for hearing before a Deputy Commissioner on June 21, 1932 who denied the petition for compensation and on July 20, 1932 the Full Board sustained the findings of the Deputy Commissioner.

PHILIP JOSEPH - MORRIS LLOYD MINE ACC. REP. #764

He suffered a fractured metatarsal on December 15, 1930. He petitioned for further compensation and his case came on for hearing on November 15, 1932. His claim was disallowed and he did not appeal.

There were no fatalities during 1932.

Payments on account of the following fatal cases were completed during the year:

<u>Mine</u>	<u>Name</u>	<u>Accident Rep. No.</u>	<u>Date of Acc.</u>	<u>Date of Final Payment</u>
Cliffs-Shaft	Isaac Setala	930	5/21/26	2/18/32
Republic	John Eckstrom	761	6/18/26	3/17/32
Stephenson	Basilio Paris	767	10/ 5/26	7/ 5/32
Ogden	Louis Tatrault	4	6/29/27	10/19/32
Spies-Virgil	Thomas Mitchell	115	12/18/26	9/17/32
Maas Crusher	Nels Fish	4	9/28/27	12/13/32

PENSION DEPT. ANNUAL REPORT YEAR 1932

11.
a. Workmen's Compensation (continued)

The following is a list of the more serious cases occurring during 1932:

<u>Mine & Rep.No.</u>	<u>Name</u>	<u>Nature of Injury</u>	<u>Compensation Paid</u>
Maas #464	James Lowney	Fractured both bones of right leg.	\$ 748.20
Negaunee #599	Edward Magnuson	Loss of right eye	648.00 *
Employes Wood - Gwinn #1	Charles Hutchins	Concussion of brain	24.00 *

* Denotes incomplete payments.

There were no lump sum payments made during the year.

As arranged for and begun in 1913, all compensation due in fatal cases and compensation to be paid in cases of injury for which a definite total amount is to be paid in accordance with the provisions of the compensation law was credited to an account called "Personal Injury Accounts Payable" and a corresponding charge was made against the mine at which the accident occurred and in the month of occurrence whenever possible, but if not, the charge was made in the following month. The compensation payments to men in these cases or to the dependents are made in the regular way weekly and charged to this account.

In April 1928, a new plan was adopted. An account has been set up and called "Personal Injury Expense Reserve."

This Reserve is accumulated by setting up 2% of the payrolls. It was made retroactive to January 1, 1928.

This was made effective at all properties except the Boeing Mine, charges for this mine being made on old plan.

No future charges will be made to P. I. A. P. account. The present amounts still in this account to be paid out in the old manner until the account is exhausted.

The following is a statement showing the balance due in different accident cases occurring during the year 1926 and 1927 inclusive.

BALANCE DUE PERSONAL INJURY ACCOUNTS PAYABLE, DECEMBER 31, 1932.

<u>Year</u>	<u>Mine</u>	<u>Dependent receiving Compensation payment</u>	
1927	Stephenson	Carolina Delbello and Jacob Delbello, Guardian	\$ 182.00
	Morris-Lloyd	Andrew Niemi	27.64
		THE CLEVELAND-CLIFFS IRON COMPANY	\$ 209.64

PENSION DEPT. ANNUAL REPORT YEAR 1932

11. a. Workmen's Compensation (continued)

Year	<u>C. C. I. Co.</u>	<u>Negaunee Mine Co.</u>	<u>Athens Ir. Mng. Co.</u>	<u>Cliffs Pr. & Light Co.</u>	<u>Mesaba Cl. Ir. Mng. Co.</u>	<u>Holman Cl. M. Co.</u>	<u>Canisteo- Cl. Mng. Co.</u>	<u>Alexandria Mine</u>	<u>TOTAL</u>
1912	1073.81	105.08							1178.89
1913	13149.70	1152.87	27.15						14329.72
1914	27416.82	2840.13	446.63						30703.58
1915	15657.71	1699.28	656.07						18013.06
1916	32404.74	3496.75	672.29						36573.78
1917	45129.92	5301.30	911.46						51342.68
1918	43734.77	6198.93	1197.57						51131.27
1919	59417.51	11724.68	2234.77		263.00				73639.96
1920	59535.76	8888.01	2928.15		3057.46				74409.38
1921	59065.26	4709.80	5208.92		2953.08				71937.06
1922	56794.35	5283.24	2048.23		1866.67				65992.49
1923	57856.37	4142.00	5007.88		4874.48				71880.73
1924	56335.89	5487.07	6394.01		9408.59				77625.56
1925	49376.47	4464.79	8305.60		7316.55				69463.41
1926	51123.41	5433.85	7087.93	514.40	9537.84				73697.43
1927	86156.10	5311.69	5489.81	939.86	7147.98				105045.44
1928	87186.58	6532.66	6235.08	1831.30	4576.56	9.00			106371.18
1929	76959.01	8899.76	6303.92	1895.50	3557.86	292.83	4.50		97913.38
1930	76753.51	10603.66	5803.45	1930.48	2531.15	1236.18	1357.05	1993.76	102209.24
1931	75167.79	10723.30	5233.65	1867.50	1489.36	559.63	1346.64	1700.87	98088.74
1932	52920.75	12137.00	5012.72	1398.25	1336.00	33.75	60.50	1074.00	73972.97
TOTALS:	1083216.23	125135.85	77205.29	10377.29	59916.58	2131.39	2768.69	4768.63	1365519.95

PENSION DEPT.

PENSION DEPT. ANNUAL REPORT YEAR 1932

11.
a. Workmen's Compensation (continued)

STATEMENT OF COMPENSATION PAYMENTS FROM
JANUARY 1st. 1932 TO DECEMBER 31st. 1932

Compensation paid on 1932 accidents	\$	1946.33	
Compensation still pending		96314.22	
Cost of Medical and Hospital service		<u>8871.04</u>	
Total	\$		107131.59
Less pendings for years 1922 to 1931 inclusive		94376.99	
Less medical paid on accidents occurring prior to January 1, 1932		<u>879.58</u>	<u>95256.57</u>
Cost of 1932 Accidents	\$		11875.02
Percentage of payrolls			.01503
A - Number of accidents on which compensation payments were made			9
B - Number of non-compensable accidents			0
C - Number of slight accidents which caused not over 1 day's lost time			68

ANNUAL REPORT
YEAR 1932

STATEMENT OF COMPENSATION PAYMENTS FROM
JANUARY 1st, 1932 to DECEMBER 31, 1932

11 A	No. of Employees	No. of Fatal Accs.	No. of Non-Fatal Accidents	Act'l Comp. Paid in 1932	1922	1923	1924	1925	1926	1927	1928	1929	1930	1932	Estimated Compensation still Pending	Actual Payments to Physicians	Fatal Cases Pending	Injury Cases Pending
Personal Injury Accounts Payable				4332.12					1848.00	2484.12					209.64		2	
Barnes Hecker Per. Inj. Accts. Pay.				18075.63					18075.63									
Austin				1058.00		7728.00				330.00					308.00			1
Cliffs Shaft	219		1	3340.20						1872.00				85.20	12456.43	1334.00	1	3
Cliffs Shaft Laboratory	1														6.50			
Chief of Police	1														6.00			
District Welfare	5														30.00			
Employes Gardens	5														14.50			
Employes Wood, Gwinn Dist.			1	24.00										24.00	312.00			1
Gardner-Mackinaw	78		1	174.80									174.80		509.00			
General Storehouse	17		1	936.00											3744.00	124.25	1	
General Welfare	1														9.25			
Geological Department	1														9.00			
Gwinn Office	1														5.00			
Holmes				2455.05		250.25						1300.00	904.80		5333.40		1	2
Ishpeming Office	15														90.50			
Land Improvement	2														6.25			
Lake															30.00			
Maas	188		2	6461.28			308.88		1974.00			864.00	684.00	758.40	1845.16	1845.16	2	6
Maintenance of Locations	4														22.00			
Mechanical Engineering	3														18.50			
Mining Engineering	4														23.25			
Morris Lloyd	188		11	4870.61		250.34	728.00					534.24	1773.40		9766.57	1007.25	3	4
Princeton	1			1439.36			728.00	711.36							2882.80			2
Purchasing Department	6														34.75			
Republic				1594.84					728.00			866.84			4753.94	50.00		2
Safety Department	1														3.75			
Shipping Department	2														12.25			
Spies Virgil	32		1	54.00											195.75			
Stephenson	1			2184.00			728.00		728.00	728.00					6818.00			3
Tilden	9														47.00			
Workmen's Compensation	1														6.25			
Hospital	29																	
The Cliffs Power & Light Co.	38		1	1202.00					266.00			936.00			1152.00	196.25	1	
Negaunee	171		3	10797.82	180.96	728.00		728.00	149.76		1237.60	2811.00	2154.88	889.40	18139.73	1339.18	3	12
Athens	160		2	4060.97					927.32		83.20	936.00	1638.00	189.33	8196.32	951.75	1	7
Total - Michigan Mines	1184	0	9	63060.68	180.96	1957.09	1764.88	2167.36	24696.71	5414.12	3123.64	6445.24	7329.88	1946.33	89501.47	8014.54	15	43
Dean															.75			
Alexandria	3			1040.00					1040.00						980.00	34.00	1	
Wade	7			260.00											73.50			
Hibbing Office	9														51.25			
Holman Brown	5														49.25			
Canisteo	58		15												587.75			
Hill Trumbull	5			741.25									741.25		5832.75	48.75	1	
Research Expense	2														11.25			
Total - Minnesota Mines	89	0	0	2041.25					1040.00				741.25		6812.75	856.50	2	
Total - All Mines	1273	0	9	65101.93	180.96	1957.09	1764.88	2167.36	25736.71	5414.12	3123.64	6445.24	8071.13	1946.33	96314.22	8871.04	17	43

PENSION DEPT. ANNUAL REPORT YEAR 1932

11.

a. Workmen's Compensation (continued)

The following table shows the percentage of compensation costs since the law went into effect, the percentage of non-fatal accidents on which compensation payments were made, and the percentage of the cases in which compensation payments were made of the total number of men employed:

	<u>Percentage of Payroll</u>	<u>Percentage of Compensable Accidents</u>	<u>Percentage of men paid compensation</u>
1912 (4 months)	.00648		
1913	.01104	42.88	8.06
1914	.0160	42.49	6.51
1915	.01095	36.26	6.63
1916	.01903	43.76	8.29
1917	.01268	41.71	7.64
1918	.01214	37.61	5.73
1919	.00901	48.71	8.15
1920	.0079	60.56	10.52
1921	.01444	64.53	9.79
1922	.01570	68.49	10.22
1923	.01590	61.67	10.23
1924	.01385	66.59	10.15
1925	.01613	69.61	10.19
1926	.07641	66.75	10.73
1927	.01356	68.24	6.55
1928	.01357	69.92	4.27
1929	.01616	74.12	3.02
1930	.01254	78.20	2.33
1931	.01697	89.28	1.11
1932	.01503	100.00	.71

PENSION DEPT. ANNUAL REPORT YEAR 1932

11.
a. Workmen's Compensation (continued)

Each year a calculation is made for the cost of the accidents occurring that year. To the actual compensation for the accidents paid during the year is added the payments to be made in our fatal cases and also those to be made in case of a specific period of disability continuing beyond the year. Estimate is also made of the ordinary disability cases still continuing at the end of the year. These estimates are based on the duration of similar accidents in previous years. The large annual statement of Compensation Costs and Percentages of the Payroll include the medical expenses. The payments of \$.50 per man per month is made regardless of whether there are any accidents or not, this amount being paid to the physicians to cover the cost of taking care of any accidents that may occur as provided for by the Workmen's Compensation Law. In addition to the regular medical payments of \$.50 per man per month, there is occasionally an added medical payment due to sending a man away for special treatment or operation or having a physician come here for such services, but these amounts are only a small percentage of the total amount paid for medical service.

COMPENSATION AND MEDICAL PAYMENTS

<u>Year</u>	<u>Total Cost</u>	<u>Medical</u>	<u>Compensation Payments</u>
1922	\$ 42090.73	\$ 11765.36	\$ 30325.37
1923	63360.07	15266.32	48093.75
1924	69889.27	15893.22	53996.05
1925	56544.37	15814.74	40729.63
* 1926	81204.83	15391.11	65813.72
1927	44730.22	13839.54	30890.68
1928	40824.87	12665.85	28159.02
1929	53642.17	13985.84	39656.33
1930	50558.28	17182.50	33375.78
1931	43317.26	13759.38	29557.88
Average 10 years:			
	54616.21	14566.38	40059.82
1932	11875.02	7991.46	3883.56

* Barnes-Hecker Disaster not included in these calculations.

PENSION DEPT. ANNUAL REPORT YEAR 1932

11. Workmen's Compensation (continued)

MICHIGAN COMPENSATION LAW

There has been no change in the Law during the year.

A new ruling and a very important one has been made. The Department of Labor and Industry are now required to approve final settlements and notify the employer of their approval, which tends to more definitely close the case. This was because of a Supreme Court decision that a case was not closed unless the Department had approved the final settlement. This is of very great importance and will tend to prevent the opening up of old cases.

There has been no change in the officials of the Department, the following being the present members:

Samuel H. Roads, Chairman
Isabel Larwill
Arthur R. Sherk
Samuel G. Beattie
John S. Boer, Secretary

It is to be hoped that the new State Administration will continue Mr. McGregor as Deputy Commissioner in this District. His knowledge of mining affairs has been very helpful in all of the cases of men injured in the mines in this district.

MINNESOTA COMPENSATION LAW

There have been no changes in the Law during the year.

There has been a change in the Administration officials of the Commission, the present members being as follows:

J. D. Williams, Chairman
H. M. Gallagher
C. R. Carlgren
J. F. Emme, Secretary

The following table shows the principal items of the changes made at different periods as affecting our properties:

	When Law went into effect <u>Sept. 1, 1912</u>	As amended in effect <u>Aug. 14, 1919</u>	In effect <u>Aug. 18, 1931</u>	In effect <u>Sept. 4, 1927</u>
<u>MICHIGAN LAW</u>				
Percentage of weekly wages	50	60	60	66-2/3
Maximum weekly compensation	\$10.00	14.00	14.00	18.00
Minimum weekly compensation	4.00	7.00	7.00	7.00
Waiting period	2 weeks	1 week	1 week	1 week
Waiting period picked up at end of	8 weeks	6 weeks	6 weeks	6 weeks
Maximum death payment	\$3000.00	4200.00	4200.00	5400.00
Maximum compensation for total disability	4000.00	6000.00	7000.00	9000.00

PENSION DEPT. ANNUAL REPORT YEAR 1932

11.
a. Workmen's Compensation (continued)

<u>MINNESOTA LAW</u>	<u>When Law went into effect Oct. 1, 1913</u>	<u>As Amended Apr. 26th 1919</u>	<u>As amended June 6th 1921</u>	<u>In effect since Oct.1,1923</u>
Percentage of weekly wage	50	66-2/3	66-2/3	66-2/3
Maximum weekly compensation	\$10.00	15.00	18.00	20.00
Minimum weekly compensation	6.00	6.50	8.00	8.00
Waiting Period	2 weeks	1 week	1 week	1 week
Waiting Period picked up at end of	-----	-----	4 weeks	4 weeks
Maximum death payment	\$3000.00	4500.00	7500.00	7500.00
Maximum compensation for total disability	4000.00	5000.00	10000.00	10000.00

PENSION DEPT. ANNUAL REPORT YEAR 1932

11.

b. Benefit Funds

The general Benefit Funds were wiped out during the year 1927, and a complete report is shown in the annual report for that year.

Reference is made here so that this statement may be readily located at any time.

PENSION DEPT. ANNUAL REPORT YEAR 1932

11.

c. Workmen's Compensation -- Barnes-Hecker

BARNES-HECKER

We have continued in giving special attention to the families of the Barnes-Hecker men, particularly on account of the year 1932 ending the payments.

The compensation payments which began on November 5, 1926, ended on August 3, 1932, and the donation payments which began on January 1, 1927, ended on September 30, 1932.

A few of the widows with small children have applied to the Probate Court for a Dependent Childrens Allowance, and some of the others have been referred to the Poor Commission for temporary help.

Early in the year each family was written to advising them of the date on which the compensation and donation payments would end so that they would be advised ahead of time in regard to the ending of the payments.

Ten of the widows have remarried, and two have died.

Mrs. Peter Carlyon - at the time of her death left no dependants, and the compensation ended.

Mrs. Ellen Luoma - who died at Morgan Heights Sanitorium on Dec. 19, 1931, left one child, of which her father has been appointed Guardian.

On the following sheets is shown the amount of compensation and donations paid.

PENSION DEPT. ANNUAL REPORT YEAR 1932

11.
c. Workmen's Compensation

BALANCE DUE BARNES HECKER P. I. A. P. August 31, 1932

	Compensation Payable	Interest on Lump Sum Payts.	Total Amount Paid
Herman Aho	4200 00		4200 00
Peter Carlyon	4200 00	2011 33 *	2188 67
Raymond Carlyon	1218 00	583 29 *	634 71
William Carlyon	4200 00		4200 00
Edwin Chapman	4200 00		4200 00
Herman Chapman	2172 00		2172 00
Thomas Drew	2100 00		2100 00
Peter Derocha	4200 00		4200 00
Earl J. Ellersick	4200 00		4200 00
Gust Frendi	4200 00		4200 00
Joseph Gelmi	4200 00		4200 00
James Greene	4200 00		4200 00
Henry Haapala	4200 00		4200 00
Jack J. Hanna	4200 00		4200 00
Arvid Heino	4200 00		4200 00
Nels Hill	4200 00	249 50	3950 50
William Huot	4200 00		4200 00
William Kakkuri	1218 00	73 38	1144 62
Arvid Kallio	4200 00		4200 00
Thomas Kirby, Sr.	4200 00		4200 00
Thomas Kirby, Jr.	4200 00		4200 00
Uno Koskinen	4200 00		4200 00
Theodore Kiuru	1446 00		1446 00
Ed Laituri	4200 00		4200 00
George Lampshire	4200 00		4200 00
Richard Lampshire	4200 00		4200 00
John Luoma	4200 00		4200 00
Emil Maki	4200 00		4200 00
Joseph Mankee	1218 00	17 22	1200 78
Walter Mattila	4200 00		4200 00
Solomon Myllymaki	4200 00		4200 00
Peter Mongiat	4200 00		4200 00
Sam Phillippi	4200 00		4200 00
W. Harry Quayle	4200 00		4200 00
Elias Ranta	4200 00	116 71	4083 29
John Santti	4200 00		4200 00
James Scopel	4200 00		4200 00
Clement Simoneau	4200 00		4200 00
Nestor Sulonen	4200 00		4200 00
Eric Timo	4200 00		4200 00
Walter Tippet	4200 00		4200 00
William F. Tippet	4200 00		4200 00
William Tuomela	4200 00		4200 00
Louis Trudell	4200 00		4200 00
Nick Valenti	4200 00		4200 00
Solomon Walimaa	4200 00	58 07	4141 93
Harvey Wepsala	1977 00		1977 00
John Wiljanen	4200 00		4200 00
William Hill	4200 00		4200 00
Wilfred Wills	1372 00		1372 00
	189121 00	3109 50	186011 50

* Dependent died. Unexpended balance.

PENSION DEPT. ANNUAL REPORT YEAR 1932

STATEMENT SHOWING "DONATED COMPENSATION" CHARGED TO
BARNES HECKER DISASTER EXPENSE TO SEPTEMBER 30, 1932

Year 1927	32717.33
" 1928	32543.16
" 1929	37865.53
" 1930	31674.71
" 1931	29200.83
" 1932	<u>21280.11</u>
	185281.67

Discount on Lump Sum Payments

	<u>1929</u>	<u>1930</u>	<u>1931</u>	
Clara Huot	168.77	.92		
Amanda Ranta	173.60			
Mary Walimaa-Bessonon	131.28			
" " "	34.45			
E. M. Pope	42.86			
Vangeline Durocha	41.67			
Mary Valenti-Keskey		39.58		
" " "		24.62	8.67	
Vangeline Durocha		4.11		
" "		3.88		
" "		3.64		
" "		3.40		
" "		3.10		
" "		2.92		
" "		4.28		
May Hill-Laforge		17.79	13.42	
Nanna Santti		15.97		
	<u>592.63</u>	<u>124.21</u>	<u>22.09</u>	<u>738.93</u>
				186020.60

Amounts Charged Off

Sarah J. Carlyon	1960.00	
" " "	568.40	2528.40
Total amount set up - - - - -		<u>188549.00</u>

STATEMENT SHOWING "DONATED COMPENSATION" CHARGED TO
BARNES HECKER DISASTER EXPENSE

FINAL STATEMENT

Case No.	Name	Donation Payable	Weekly Rate	1927	1928	Amounts Paid 1929	1930	1931	1932	Interest Charged	Amounts Charged Off	Total Payment
1	Hilma Aho-Johnson	4200.00	14.00	714.00	728.00	728.00	728.00	728.00	574.00			4200.00
2	Sarah J. Carlyon	4200.00	14.00	714.00	728.00	798.00					1960.00	4200.00
3	Sarah J. Carlyon	1218.00	4.06	207.06	211.12	231.42					568.40	1218.00
4	Elly Carlyon	4200.00	14.00	714.00	728.00	728.00	728.00	728.00	574.00			4200.00
5	Elsie Chapman-Peck	4200.00	14.00	714.00	728.00	728.00	728.00	728.00	574.00			4200.00
6	Elsie Chapman-Peck	2172.00	7.24	369.24	376.48	376.48	376.48	376.48	296.84			2172.00
7	Elizabeth E. Drew	2100.00	7.00	357.00	364.00	364.00	364.00	364.00	287.00			2100.00
8	Vangelina Derocha	4200.00	14.00	714.00	728.00	1036.33	1024.67	630.00		67.00		4200.00
9	Sarah Ellersick	4200.00	14.00	714.00	728.00	728.00	728.00	728.00	574.00			4200.00
10	Anna Frendi	4200.00	14.00	714.00	728.00	728.00	728.00	728.00	574.00			4200.00
11	Emma Gelmi	4200.00	14.00	714.00	728.00	728.00	728.00	728.00	574.00			4200.00
12	Marie Greene-Gaboury	4200.00	14.00	714.00	728.00	728.00	728.00	728.00	574.00			4200.00
13	Ina Haapala	4200.00	14.00	714.00	728.00	728.00	728.00	728.00	574.00			4200.00
14	Florence M. Hanna	4200.00	14.00	714.00	728.00	728.00	728.00	728.00	574.00			4200.00
15	Toini Heino	4200.00	14.00	714.00	728.00	728.00	728.00	728.00	574.00			4200.00
16	May Hill-Laforge	4200.00	14.00	714.00	728.00	728.00	892.21	938.58	168.00	31.21		4200.00
17	Clara Huot	4200.00	14.00	714.00	728.00	2239.23	349.08			169.69		4200.00
18	Binar Mantila, Adm.	400.00		400.00								400.00
19	Piina Kakkuri	1218.00	4.06	207.06	211.12	211.12	211.12	211.12	166.46			1218.00
20	Sanna Kallio	4200.00	14.00	714.00	728.00	728.00	728.00	728.00	574.00			4200.00
21	Anna Kirby	4200.00	14.00	714.00	728.00	728.00	728.00	728.00	574.00			4200.00
22	Bertha Kirby	4200.00	14.00	714.00	728.00	728.00	728.00	728.00	574.00			4200.00
23	Viana Koskinen	4200.00	14.00	714.00	728.00	728.00	728.00	728.00	574.00			4200.00
24	John Kiuru	1446.00	4.82	245.82	250.64	250.64	250.64	250.64	197.62			1446.00
25	Alli Laituri	4200.00	14.00	714.00	728.00	728.00	728.00	728.00	574.00			4200.00
26	Alice Lempshire-Lawson	4200.00	14.00	714.00	728.00	728.00	728.00	728.00	574.00			4200.00
27	Esther Cowling, Guardian	4200.00	14.00	714.00	728.00	728.00	728.00	728.00	574.00			4200.00
28	Ellen Luoma	4200.00	14.00	714.00	728.00	728.00	728.00	728.00	574.00			4200.00
29	Lempi Mackie	4200.00	14.00	714.00	728.00	728.00	728.00	728.00	574.00			4200.00
30	Elizabeth M. Pope	1218.00	4.06	207.06	211.12	756.96				42.86		1218.00
31	Lempi E. Mattila	4200.00	14.00	714.00	728.00	728.00	728.00	728.00	574.00			4200.00
32	Mini Myllymaki	4200.00	14.00	714.00	728.00	728.00	728.00	728.00	574.00			4200.00
33	Valentina Mongiat	4200.00	14.00	714.00	728.00	728.00	728.00	728.00	574.00			4200.00
34	Mary Phillippi	4200.00	14.00	714.00	728.00	728.00	728.00	728.00	574.00			4200.00
35	Louisa Quayle	4200.00	14.00	714.00	728.00	728.00	728.00	728.00	574.00			4200.00
36	Amanda Ranta	4200.00	14.00	714.00	728.00	2332.40	252.00			173.60		4200.00
37	Nanna Santti	4200.00	14.00	714.00	728.00	728.00	908.03	728.00	378.00	15.97		4200.00
38	Frances Scopol	4200.00	14.00	714.00	728.00	728.00	728.00	728.00	574.00			4200.00
39	Elna Simoneau	4200.00	14.00	714.00	728.00	728.00	728.00	728.00	574.00			4200.00
40	Matilda Sulonen	4200.00	14.00	714.00	728.00	728.00	728.00	728.00	574.00			4200.00
41	Amalia Timo	4200.00	14.00	714.00	728.00	728.00	728.00	728.00	574.00			4200.00
42	Marian Tippet-Hill	4200.00	14.00	714.00	728.00	728.00	728.00	728.00	574.00			4200.00
43	Nellie Tippet	4200.00	14.00	714.00	728.00	728.00	728.00	728.00	574.00			4200.00
44	Florence Tuomela	4200.00	14.00	714.00	728.00	728.00	728.00	728.00	574.00			4200.00
45	Delia Trudell	4200.00	14.00	714.00	728.00	728.00	728.00	728.00	574.00			4200.00
46	Mary Valenti-Keskey	4200.00	14.00	714.00	728.00	728.00	1349.80	607.33		72.87		4200.00
47	Mary Walimaa-Bessonon	4200.00	14.00	714.00	728.00	1990.27	602.00			165.73		4200.00
48	Adam Wepsola	1977.00	6.59	336.09	342.68	342.68	342.68	342.68	270.19			1977.00
49	Frank Wickman	400.00		400.00								400.00
50	Eliina Wiljanen	4200.00	14.00	714.00	728.00	728.00	728.00	728.00	574.00			4200.00
51	Elizabeth Hill	4200.00	14.00	714.00	728.00	728.00	728.00	728.00	574.00			4200.00
		188549.00		32717.33	32543.16	37865.53	31674.71	29200.83	21280.11	738.93	2528.40	188549.00

PENSION DEPT. ANNUAL REPORT YEAR 1932

23.

a. Pension System

The year 1932 completed the twenty-fourth year of the operation of the Pension System.

The following Mining Dept. pensions were granted during the year:

<u>No.</u>	<u>Name</u>	<u>Mine</u>	<u>Date Pen- sion Began</u>	<u>Monthly Payment</u>
261	Robert Trudgen	Gardner-Mackinaw	Jan. 1, 1932	\$ 28.08
262	Matt Vanni	Negaunee & Maas	Jan. 1, 1932	20.03
263	J. S. Mennie	Various	Jan. 1, 1932	59.69

The following Old Age Pensions ceased during the year:

<u>No.</u>	<u>Name</u>	<u>Date Pensioned</u>	<u>Date Died</u>
156	A. P. Wahlstrom	July 1, 1922	Jan. 23, 1932
88	Richard Kinnish	Aug. 1, 1919	Feb. 21, 1932
212	John O. Flack	June 1, 1927	Mar. 6, 1932
167	Andrew Fandrem	Feb. 1, 1924	Mar. 20, 1932
115	John D. Stephens	May 1, 1921	May 8, 1932
240	C. J. Shaddick	Jan. 1, 1930	May 20, 1932
260	Thomas Sather	June 1, 1931	June 3, 1932
221	Henry Rasmussen	Jan. 1, 1928	June 23, 1932
204	Erick H. Anderson	Apr. 1, 1927	July 8, 1932
180	Claus Berg	Jan. 1, 1925	Sept. 2, 1932
89	Peter Rean	Sept. 1, 1919	Sept. 9, 1932
203	James Stephens	Jan. 1, 1927	Oct. 23, 1932

	<u>1931</u>	<u>1932</u>
Number of pensions granted during the year	12	3
Number of deaths	7	12
Number of Old Age Pensions in force Dec. 31.	125	116
Average Annual Pension	454.14	327.82

No. 21, Niels Hansen, was added to the Furnace Dept. Pension Roll on Jan. 1, 1932.

No. 17, Bat Dillon, who was pensioned on July 1, 1928, died on March 30, 1932.

On Dec. 31, 1932 there were nine pensioners on the Furnace Dept. roll, with an annual average pension of \$ 357.77.

PENSION DEPT. ANNUAL REPORT YEAR 1932

23.

a. Pension System (continued)

Pension payments for the years 1908 to 1932 inclusive are as follows:

<u>MINING DEPARTMENT</u>		<u>Old Age</u>	<u>Widows & Orphans</u>	<u>Total</u>		
<u>Year</u>						
1908	\$	69.10	\$	48.00	\$	117.10
1909		351.92		464.00		815.92
1910		896.44		1043.00		1939.44
1911		1690.37		2649.00		4339.37
1912		3865.95		3113.00		6978.95
1913		5133.62		3025.00		8158.62
1914		6179.57		3403.00		9582.57
1915		7910.35		2372.00		10282.35
1916		8787.02		1694.00		10481.02
1917		9327.22		1266.00		10593.22
1918		8889.14		944.00		9833.14
1919		9605.02		888.00		10493.02
1920		12613.29		814.00		13427.29
1921		21856.64		14.00		21870.64
1922		29063.85		168.00		29231.85
1923		29564.57		168.00		29732.57
1924		31987.64		168.00		32155.64
1925		34926.34		163.00		35089.34
1926		38924.88		143.00		39067.88
1927		45841.03		0.00		45841.03
1928		51869.03		0.00		51869.03
1929		52701.19		0.00		52701.19
1930		53779.24		0.00		53779.24
1931		56379.39		0.00		56379.39
1932		39611.69		0.00		39611.69
		<u>561824.50</u>		<u>22547.00</u>		<u>584371.50</u>
Payment made by Cleveland Office in 1930		<u>2500.00</u>		<u> </u>		<u>2500.00</u>
		<u>564324.50</u>		<u>22547.00</u>		<u>586871.31</u>

PENSION DEPT. ANNUAL REPORT YEAR 1932

23.

a. Pension System (continued)FURNACE DEPARTMENT

The Pension payments for the years 1910 to 1932 inclusive are as follows:

<u>Year</u>	<u>Old Age</u>	<u>Widows & Orphans</u>	<u>Total</u>
1910	\$ 111.75	\$ 0.00	\$ 111.75
1911	268.20	120.00	388.20
1912	268.20	180.00	448.20
1913	268.20	180.00	448.20
1914	268.20	180.00	448.20
1915	268.20	180.00	448.20
1916	268.20	60.00	328.20
1917	268.20	0.00	268.20
1918	268.20	0.00	268.20
1919	130.55	0.00	130.55
1920	223.80	0.00	223.80
1921	781.63	0.00	781.63
1922	1118.04	0.00	1118.04
1923	1178.38	0.00	1178.38
1924	2085.82	0.00	2085.82
1925	2833.39	0.00	2833.39
1926	5351.35	0.00	5351.35
1927	4819.73	0.00	4819.73
1928	5481.50	0.00	5481.50
1929	6137.02	0.00	6137.02
1930	6191.42	0.00	6191.42
1931	5531.30	0.00	5531.30
1932	<u>3327.09</u>	<u>0.00</u>	<u>3327.09</u>
	47449.37	900.00	48349.37

REPUBLIC MINE

No new pensioners were added to the Pay Roll during the year.

There are 20 pensioners on the Roll, the average annual pension being \$353.43.

The payments made from Oct. 1, 1920 to Dec. 31, 1932 are as follows:

1920	\$ 278.61
1921	33427.97
1922	5672.84
1923	6641.51
1924	8172.96
1925	8379.07
1926	9539.90
1927	12185.24
1928	12768.21
1929	14199.74
1930	13148.40
1931	11809.51
1932	<u>7673.30</u>
	\$ 113897.27

PENSION DEPT. ANNUAL REPORT YEAR 1932

23.

a. Pension System (continued)REPUBLIC MINE (continued)

The following Old Age Pensions ceased during the year:

<u>No.</u>	<u>Name</u>	<u>Date Pensioned</u>	<u>Date Died</u>
14	John Jacobson	July 1, 1922	Oct. 17, 1932
29	John Carlson	Dec. 1, 1926	Nov. 24, 1932
28	Stephen Rule	Dec. 1, 1926	Dec. 30, 1932

LAND DEPARTMENT

Erick Johnson continued on the Pension Roll during the year.

Total pension payments from January 1, 1927 to December 31, 1932 are as follows:

1927	\$ 333.36
1928	333.36
1929	333.36
1930	333.36
1931	333.36
1932	<u>250.08</u>
	\$ 1916.88

PENSION DEPT. ANNUAL REPORT YEAR 1932

23.

b. Republic Mine Funds

In the report for 1930 will be found a full statement of the Sick Benefit, Relief and Fatal Accident Funds.

When the balance remaining unpaid was turned over to the Marquette Chapter of the American Red Cross a small amount was retained to take care of outstanding checks and within a few years this balance can be safely turned over to Red Cross if no further payments are called for.

We have had during the year a number of calls from people in connection with the old Republic Mine Funds, but in these cases it was found that the people applying were not entitled to the payments as their relationship was so remote as not to come within the provisions of the rules and resolutions adopted by the Club when the business was closed and the present balance of the fund turned over to the American Red Cross.

It is probably best to keep these funds intact in these small savings accounts for some time longer to make sure that there can be no question as to the payment to any people to whom the money rightfully belongs.

The funds turned over to the Red Cross were to be used for emergency relief, and in accordance with this some use has already been made of them. The heating boiler at the hospital gave out and the schools assumed the care of the building and the heating of it, and money was used to put in a new boiler. The schools make quite a little use of the building in connection with its physical education and other work, and because of this were willing to supply the fuel.

The Republic Bank was closed in 1932 and the Relief Organization had on deposit some \$165.00, and this was not available up to the end of the year. To meet the requirements and also because of the impossibility of raising any particular sums of money at this time in Republic, some \$400.00 was appropriated from the funds in the care of the Marquette County Red Cross Chapter for direct relief at this particular time.

The statement of these balances in savings accounts at the Miner's National Bank is as follows:

PENSION DEPT. ANNUAL REPORT YEAR 1932

23.
b. Republic Mine Funds.

STATEMENT OF FUNDS REMAINING IN REPUBLIC MINE RELIEF AND SICK
BENEFIT FUND "SAVINGS ACCOUNT" AS OF DECEMBER 31st, 1932.

Balance on hand in "Savings Acct." as of Dec. 31, 1931	\$ 56.71
Interest on Funds during the year 1932	<u>1.69</u>
Balance as per Bank Balance of Dec. 31, 1932	\$ 58.40

STATEMENT OF FUNDS REMAINING IN THE REPUBLIC MINE FATAL
ACCIDENT FUND "SAVINGS ACCOUNT" AS OF DECEMBER 31, 1932

Balance on hand in "Savings Acct." as of Dec. 31st, 1931	\$163.15
Interest on Funds during the year 1932	<u>4.91</u>
Balance as per Bank Balance of Dec. 31, 1932	\$168.06

PENSION DEPT. ANNUAL REPORT YEAR 1932

23.

c. Suspense Funds

In the 1918 Annual Report there is a complete statement of the payments made from the Suspense Fund from September 1st, 1912 at which time the Compensation Law in Michigan went into effect. The Funds were exhausted and report is made here from year to year so that it can always be readily determined where to look for the final report of the Suspense Fund.

d. Visiting Nurses

The work of the Visiting Nurses was interrupted by the Ishpeming and Negaunee nurses being taken off their regular work and used as nurses in the Hospital. This was from the month of February to May inclusive. After the mines shut down it was found that a good many investigations had to be made and the nurses were in better position to do this than anyone else, and, therefore, put back at the nursing work, but at reduced salaries. They have continued through the balance of the year.

This work was begun in Ishpeming on May 1, 1908, at Negaunee on September 1, 1912. It began at Gwinn on September 1, 1910 and continued until October 1, 1927 when the mines were closed.

The following nurses were employed during the year:

Ishpeming	-	Miss Myrtle Welander
Negaunee	-	Miss Ina E. Atkin
Iron River	-	Miss Laura N. Fisk
		(who is employed jointly with other companies)

PENSION DEPT. ANNUAL REPORT YEAR 1932

23.

d. Visiting Nurses

The following is the report of the Ishpeming Visiting Nurse for the year 1932:

Total number of patients cared for during year	314
Number of new cases cared for during year	158
Total number of visits to patients	1954
Number of families visited for the first time	37
Number of families investigated 13 Number of investigation calls	20
Number of social calls	8
Number died	8

Classification of new cases for the year:

Number of adults	92	Male	9	Female	83
Number of children	66	Male	32	Female	34

Nationalities of new cases for the year:

American	105	Irish	1
English	12	Italian	5
Finnish	18	Swedish	6
French	11		

Diseases and number of new cases:

Anemia	1	Empyema	1	Paralysis	3
Arterio Sclerosis	2	Gen. Deb.	1	Pneumonia	2
Asthma	1	Grippe	1	Post Operative	15
Baby Welfare	11	Heart Trouble	1	Prenatal	16
Bowel Trouble	2	Infants, Newborn	17	Pul.Tuberculosis	2
Bronchitis	1	Infections	9	Pyelitis	1
Burns	2	Injury	5	Stomach Trouble	5
Carcinoma	3	Jaundice	2	Tonsillitis	4
Catarrhal Fever	1	Kidney Trouble	1	Unclassified	7
Circumcision	2	Miscarriage	3	Undiagnosed	7
Cold	5	Nephritis	1	Var. Ulcer	2
Cystitis	2	Obstetrical	13	Whooping Cough	4
Dysentary	1	Otitis Media	1		

Visiting Nurse: Miss Myrtle Welander

PENSION DEPT. ANNUAL REPORT YEAR 1932

23.

d. Visiting Nurses (continued)

The following is the report of the Negaunee Visiting Nurse for the year 1932:

Total number of patients cared for during year	574
Number of new cases cared for during year	372
Total number of visits to patients	2896
Number of families visited for the first time	12
Number of families investigated 495	Number of investigation calls 750
Number of families helped 7; Provisions 4; Fuel 3	
Number of social calls	104
Number died	2

Classification of new cases for the year:

Number of adults	172	Male	31	Female	141
Number of children	200	Male	108	Female	92

Nationalities of new cases for the year:

American	184	Irish	1
English	21	Italian	20
Finnish	132	Swedish	6
French	7	German	1

Diseases and number of new cases:

Appendicitis	6	Infants, newborn	41	Quinsy	1
Asthma	1	Infections	14	Rheumatism	1
Bowel Trouble	19	Insanity	1	Rupture	4
Bronchitis	1	Injury	24	Scabies	2
Burns	3	Jaundice	2	Senility	2
Carcinoma	1	Kidney Trouble	2	Sore Eyes	1
Chicken Pox	3	Mal-Nutrition	7	Sprains	1
Cold	34	Measles	8	Stomach Trouble	2
Croup	1	Neuritis	3	Tonsillitis	6
Cystitis	1	Obstetrical	41	Trench Mouth	3
Eczema	1	Peritonitis	1	Typhoid Fever	1
Epileptic	1	Pertussis	1	Unclassified	8
Flu	62	Pleurisy	2	Undiagnosed	3
Gall Stones	2	Pneumonia	3	Var. Ulcer	2
Grippe	3	Post Operative	14	Whooping Cough	1
Gen. Deb.	2	Pregnancy	25		
Heart Trouble	3	Pul. Tuberculosis	1		

Visiting Nurse: Miss Ina E. Atkin

PENSION DEPT. ANNUAL REPORT YEAR 1932

23.

d. Visiting Nurses (continued)

NUMBER OF PATIENTS ATTENDED AND CALLS MADE BY VISITING NURSES

	<u>No. of Patients</u>	<u>No. of New Cases</u>	<u>Male Adult</u>	<u>Female Adult</u>	<u>Male Children</u>	<u>Female Children</u>
Ishpeming	314	158	9	83	32	34
Negaunee	<u>574</u>	<u>372</u>	<u>31</u>	<u>141</u>	<u>108</u>	<u>92</u>
	888	530	40	224	140	126
	<u>Total No. of Visits</u>	<u>No. Died</u>	<u>Social Calls</u>	<u>Families visited first time</u>		
Ishpeming	1954	8	8	37		
Negaunee	<u>2896</u>	<u>2</u>	<u>104</u>	<u>12</u>		
	4850	10	112	49		

NATIONALITY OF CASES

	<u>American</u>	<u>English</u>	<u>Finnish</u>	<u>French</u>	<u>German</u>	<u>Irish</u>
Ishpeming	105	12	18	11	-	1
Negaunee	<u>184</u>	<u>21</u>	<u>132</u>	<u>7</u>	<u>1</u>	<u>1</u>
	289	33	150	18	1	2
	<u>Italian</u>	<u>Swedish</u>				
Ishpeming	5	26				
Negaunee	<u>20</u>	<u>6</u>				
	25	12				

PENSION DEPT. ANNUAL REPORT YEAR 1932

23.

f. North Lake Club

The work of the Club has continued during the year under the supervision of Mr. Stakel, and George Bowden, Mine Clerk, has acted as treasurer.

On account of the closing of the mines during the summer the work of the Club was very much reduced, and Fred Linn who had formerly been Chemist, and Alec Ham, divided their time at the Club House. The work was taken care of satisfactorily during this period and has proved a very useful place of gathering for the men while out of work and not employed with their gardens or cutting wood.

The following is the financial statement for the year.

PENSION DEPT. ANNUAL REPORT YEAR 1932

23.
f. North Lake Club

Following is the financial statement for the year:

Balance on hand January 1st, 1932	\$ 87.15	
Receipts during year 1932	<u>281.20</u>	
		\$ 368.35
Total expenditures during year 1932		<u>269.77</u>
Balance on hand December 31st, 1932		98.58

Receipts

Membership Fees - Men	247.50	
Bowling Alleys	8.35	
Telephone Tolls	<u>25.35</u>	
		281.20

Expenditures

Building, Maintenance	7.40	
Lighting	28.14	
Heating	46.33	
Water	2.00	
Bowling Alleys	3.15	
Office Expense	54.60	
Reading Room	39.00	
Miscellaneous	59.65	
Telephone Tolls	<u>29.50</u>	
		269.77

PENSION DEPT. ANNUAL REPORT YEAR 1932

23.

g. Gwinn Association

Mr. E. L. Miller has continued in the charge of the work at the Club House as Superintendent, under the personal supervision of Mr. Graff.

After our properties shut down a new plan of operation went into effect on October 1, 1927. At this time the Company reduced its salary payments to \$50.00 per month, paying this amount in order to retain control and supervision of the Club.

Those employed at the mines have paid 50 cents per month and the School Board pays a substantial sum for the use of the building for its physical training and the assistance rendered by Mr. Miller in this and the school athletic work.

In November it was decided to reduce the payment made by the men to 25 cents per month.

On the following sheets will be found a complete financial statement for the year and a statistical report prepared by Mr. Miller.

Attention is called to the following features from which a substantial revenue is received:

	<u>Receipts</u>	<u>Expenditures</u>	<u>Profit</u>
Pool and Billiards	\$ 356.10	\$ 30.21	\$ 325.89
Bowling Alleys	125.00	37.16	87.84
Buffet	225.25	136.52	85.73
Camp	<u>10.00</u>	<u>7.16</u>	<u>2.84</u>
Total	713.35	211.05	502.30

PENSION DEPT. ANNUAL REPORT YEAR 1932

23.

g. Gwinn Association (continued)

Balance on hand January 1st, 1932	\$ 1457.45	
Receipts during year	<u>3950.30</u>	
Total		\$ 5407.75
Total Expenditures		<u>4295.04</u>
Balance on hand December 31st, 1932		\$ 1112.71

RECEIPTS

Membership Fees -- Men	690.00	
Bowling Alley	125.00	
Pool and Billiards	356.10	
Buffet	222.25	
Towels and soap	28.00	
Camp	10.00	
Discount	3.95	
Telephone	15.00	
School Rental	<u>2500.00</u>	
Total		\$ 3950.30

EXPENDITURES

Building, maintenance	46.46	
Lighting	267.90	
Heating	304.32	
Water	14.40	
Bowling Alleys	37.16	
Pool and billiards	30.21	
Buffet	136.52	
Entertainments	5.30	
Towels and Soap	23.00	
Office Expense	11.92	
Camp	7.16	
Salaries	3155.00	
Theatre	2.66	
Library	14.00	
Reading room	69.85	
Athletics	91.14	
Music	15.00	
Telephone	62.62	
Government Tax	<u>.42</u>	
Total		\$ 4295.04

PENSION DEPT. ANNUAL REPORT YEAR 1932

23.

g. Gwinn Association (continued)

The following report and summary of the activities of the Association Club-house has been taken from the monthly reports issued during the year.

MEMBERSHIP

Owing to conditions in the district, many who had carried membership in the association for years requested that their names be dripped from the membership roll until they secured employment. These people continue to make use of the facilities and no doubt will renew their membership when possible.

Membership January 1st - 1932 169
 Membership January 1st - 1933 98

January 1st 1933 - showed that 65 members were listed from the Gardner-Mackinaw Mine and 33 were listed from by other persons, business men or school teachers.

ATTENDANCE

Total estimated attendance at building for year 77400
 Average monthly membership 6450

A slight increase in attendance can be accounted for by the fact that many more persons use the building during the morning and afternoon periods, also to the fact that during the summer many interested in the soft ball league used the building before and after games.

Total estimated attendance for all outdoor activities for which material and supervision was furnished by the association; including, Ice Skating Rink, Playground and Tennis Court, Physical Training at High School Playgrounds, Bass Lake Camp, Baseball Team and Softball League 18550

RECEIPTS AND EXPENDITURES

Total receipts including 1931 balance	\$ 5407.75
Total expenditures for year	<u>4295.04</u>
Balance on hand January 1st, 1933	1112.71

BUFFET

Receipts for year	222.25
Expenditures for year	<u>136.52</u>
Profit	85.73

BOWLING AND POCKET BILLIARDS

Receipts for year	481.10
Expenditures for year	<u>67.37</u>
Profit	413.73

PENSION DEPT. ANNUAL REPORT YEAR 1932

23.

g. Gwinn Association (continued)GENERAL ACTIVITIES AND ORGANIZATIONS USING BUILDING

38 - Meetings: 2 by Sportsmen's Association, 2 by American Legion, 7 by County Demonstration Agent, 6 by Health Department of State, 12 by Welfare Relief Workers, and 9 committee meetings.

- 2 - Social card parties - to raise church funds
 - 3 - Private party showers
 - 3 - Invitation Card parties - young ladies
 - 3 - Dances given by Scouts to raise funds
 - 16 - Meetings by Women's Study Club
 - 12 - Free Dances by Association - attendance 1250
 - 3 - Social parties under supervision school - no dancing
 - 5 - Dancing parties by High School Classes
 - 8 - Dances after basketball games
 - 9 - Dances by local orchestras
 - 1 - Inter-city cribbage match
- 41 - Dances held during year - including social parties, dances held after basketball games, free dances and those covering an annual or special event.
- 71 - Lunches served by different organizations.

CHURCH ORGANIZATIONS USING BUILDING

- 5 - events by different organizations to raise funds
- 15 - meetings by Episcopal Ladies Guild
- 16 - meetings or socials by Methodist Church or Epworth League
- 4 - meetings by Swedish Church

EVENTS OF SPECIAL INTEREST

Annual Easter Monday Ball	by	Orchestra
Annual Junior Class Party	by	High School
Farewell Party	by	St. Anthony Church
Annual Scout Ceremonial	by	Scout Troops
Special Dance to raise funds for Xmas Treat	by	Community Young Men
Annual Xmas Party	by	Girl Scouts
Annual Xmas Treat for Children	by	Community
Annual Firemen's Ball	by	Local Firemen

PENSION DEPT. ANNUAL REPORT YEAR 1932

23. g. Gwinn Association (continued)

MUSICAL ORGANIZATIONS

The senior band discontinued during the year, but the Junior band continued to function the greater part of the year - also a group of young ladies have organized and practice weekly under supervision.

Two orchestras have organized with local talent and make use of the building for practice and also appear for dancing parties, sometimes donating their services and at other times a charge of 15 cents is made. These organizations have also accepted out-of-town engagements and both are popular with the dancing fans.

Summary

- 18 - rehearsals by band organizations
- 21 - rehearsals by orchestras
- 9 - dances held by orchestras - charge affairs
- 6 - Free dances given - services donated

PHYSICAL AND ATHLETIC DEPARTMENT

Including all work conducted in the gymnasium and all outdoor recreations, such as; supervising baseball, physical training classes at school playgrounds, ice skating rink, tennis courts, shoe pitching court, football, speedball, archery and softball.

The employes of the association continue to supervise all athletic work for the local high school and furnish much of the material used.

The business men continue to meet twice a week and the women's supervised class meets weekly. The women's class entertained the National Mine Class with a demonstration and lunch during the early part of the year.

Summary:

<u>Supervised work in Gymnasium</u>	<u>Periods</u>	<u>Attendance</u>
High School girls classes	84	1656
High School boys classes	111	1783
High school basketball practice	60	716
Junior boys recreation	13	553
Seniors using gym	89	632
Business Men's Classes	21	229
Women's Classes	20	390
Swimming pool (not operated)		
Total for gymnasium	398	5959

PENSION DEPT. ANNUAL REPORT YEAR 1932

23.

g. Gwinn Association (continued)

<u>Supervised work at school playground</u>	<u>Periods</u>	<u>Attendance</u>
High School girls classes	39	1168
High School boys classes	<u>62</u>	<u>1653</u>
Total outdoor	101	2821
Total Indoor class work	398	5959
Total Outdoor class work	<u>101</u>	<u>2821</u>
Grand total	499	8780

BASKETBALL

The following basketball games were played under association supervision:

High School team - 5 games at home - 11 away
 Club team - 3 games at home - 2 away

Practice games between high and club teams 7

Junior teams played in 10 preliminary games

Junior teams in league - 10 - number games played in league and tournament 70.

The high school team again won the district tournament at Marquette and lost their second game at the regional tournament at Lake Linden.

Total attendance at all home games and Junior Tournament 3200

ICE SKATING RINK

The ice skating rink was in condition for skating 34 days, and was flooded 12 times after being constructed. Attendance 2025

TENNIS COURT AND HORSESHOE COURT

The tennis court was in condition for play 67 days during the season - attendance on tennis and horseshoe courts 1725

BASEBALL AND ATHLETIC DEPARTMENT

The association again placed a team in the Inter-county amateur baseball league. This is the fifth year of the league and is still under the control of association employees. The team made a good showing, completing their schedule and finishing in second place.

Games played at home9 - away 9
 Practice sessions held 40

Estimated attendance at all home games 3700

PENSION DEPT. ANNUAL REPORT YEAR 1932

23.

g. Gwinn Association (continued)SOFTBALL LEAGUE

The activity that held the interest of the entire community during the summer was the softball league. This league was under the supervision of the association and material used was furnished by the association.

The schedule was started early in June and completed in August. All games were free to spectators and many women enjoyed the contests.

League games	110
Games with outside teams.		7

Total attendance at all homes games - Austin, Princeton, New Swanzy and Gwinn	5700
---	-----------	------

LIBRARY AND READING ROOMLIBRARY

Many of the men have turned their spare time into reading time and have made good use of the books that the association has in the library. Some of the books show the signs of wear but an effort has been made to keep them in shape for circulation.

Number of books loaned during year	2172
Number books loaned per month	181
Number of books added by purchase	56
Number of books added by donation	9
Number of books withdrawn - bad condition	..	47

READING ROOM

The following number of magazines and newspapers are received and placed on file and rack in reading room.

Weekly magazines	4	Daily newspapers	2
Monthly magazines	17	Weekly newspapers	...	2

PENSION DEPT. ANNUAL REPORT YEAR 1932

23.

g. Gwinn Association (continued)BASS LAKE CAMP

The cottage was opened with caretaker in charge June 11th, but owing to the fact that many local residents have their own camps and many were not operating their cars there was very little demand for reservation. The attendance at the grounds was also below average for the entire summer.

Number different parties using camp overnight	6
Number different parties using camp 3 day periods	5
Number different parties using camp 5 day periods	2

Girl scouts did not take their annual camping trip, but 20 scouts used camp one night.

All day picnics by organizations	6
Number family basket picnics	100
Estimated attendance at grounds during season	2500

SCOUT ACTIVITIES

Two scout troops continue to be active. Troop No. 1 consists of the older girls and troop No. 2 the girls under 14 years of age. Both troops meet weekly in the association building under supervision.

The following summary covers the work of both troops:

Meetings; class and social - 104 - attendance 2145

25 - lunches or suppers were held - either after meetings indoor or after hikes, with meals outdoors.

7 - parties were held

3 - dances were held to raise funds

11 - hikes for nature study or swimming parties were held

2 - Hallow'een parties - one for each troop

1 - Valentine party

1 - entertainment for mothers of scout members

1 - annual ceremonial night and award of 65 merit badges

2 - annual Xmas parties - one for each troop

1 - candy sale to raise funds

Scouts attended church in body during scout week.
Scouts dressed and donated dolls and made toys for children at Xmas time.

BUILDING

The association continued to handle the larger part of the operation expense, although it was necessary for the Cleveland-Cliffs Iron Co. to again assist by donating coal and also in a financial way to pay a part of the employees salary. The building at the close of the year was in fair condition, having had no special re-decoration or alterations made, but was given a general overhauling in the fall. During the summer exterior repair work was completed replacing the brick work that had gotten out of line on top of building. The roof on north side of building was in bad shape and was re-tarred and repaired and is now in good shape.

PENSION DEPT.

PENSION DEPT. ANNUAL REPORT YEAR 1932

23.
g. Gwinn Association (continued)

BUILDING (continued)

All possible means to economize in the operation of the building were considered. Salaries were again reduced, the heating and lighting items are being watched carefully and the movie equipment has been removed from the booth to lower insurance rates on the building.

PENSION DEPT. ANNUAL REPORT YEAR 1932

23.

h. Ishpeming Y. M. C. A.

The year at the "Y" has been a satisfactory one under the direction of Floyd B. Rathmas as Secretary, and Mr. C. J. Stakel as President of the Board of Directors. It has been a hard year in it not being possible, on account of the mines being idle, to make a regular canvas for funds. Contributions have come in to quite a satisfactory degree by personal appeal.

Consideration has been given to the matter of the bonds on account of the Oliver Iron Mining Co. not having paid their regular monthly contribution. This has been taken up with the local Oliver officials and through them with the officials at Duluth.

The present officials are as follows:

C. J. Stakel	President
Sam Cohodas	Vice President
R. J. Cheneour	Secretary
Judge Wm. St. John	Treasurer

The building has been used more than ever before and is in constant use throughout the day. The summer camp was operated as in previous years at Ross Lake and was very successful and was the source of some profit.

PENSION DEPT. ANNUAL REPORT YEAR 1932

23.

i. Safety Work

We have cooperated with the Safety Department during the year. There has been very few accidents, only nine for the year, and on account of the mines being idle from June until October inclusive, there has been no occasion for the regular Central Safety Committee meetings, but these were resumed in December with the closing up of the year.

The following are the present members of the Committee:

Mr. G. R. Jackson, Chairman
Mr. S. R. Elliott
Mr. O. D. McClure
Mr. C. J. Stakel
Mr. W. W. Graff
Mr. W. R. Meyers
Mr. Carl Brewer
Mr. William Conibear
Mr. W. H. Moulton, Secretary

The regular work of the Safety Department is covered by Mr. Conibear's report.

ACCIDENT FREQUENCY

NUMBER OF ACCIDENTS PER 1000 DAYS OF LABOR - DECEMBER 1932

	Rank Dec. 1932	Days of Labor	Number of Accidents 1932	Number of Accidents - 1931	Rate per 1000 Days 1932	Rate per 1000 Days - 1931
Cliffs Shaft "A"			0	0		
Cliffs Shaft "B"	1	2744	0	0	.000	.000
Maas	2	2445	0	0	.000	.000
Morris Lloyd	3	2232	0	1	.000	.364
Spies Virgil	4	709	0	0	.000	.000
C. P. & L. Co.	5	707	0	0	.000	.000
Gardner-Mackinaw	6	678	0	0	.000	.000
Canisteco	7	422	0	0	.000	.000
General Storehouse	8	222	0	0	.000	.000
Hill Trumbull	9	98	0	0	.000	.000
Wade	10	97	0	0	.000	.000
Holman Brown	11	93	0	0	.000	.000
Miscellaneous	12	84	0	0	.000	.000
Alexandria	13	68	0	0	.000	.000
Tilden	14	67	0	0	.000	.000
AVERAGE					.117	.042
Negaunee	15	2230	1	0	.448	.000
Athens	16	2004	1	0	.499	.000
General Roll		2115				
Various Properties		33				
TOTAL ALL PROPERTIES		17048	2	1		

RANK AND RATE FOR THE YEAR 1932

Morris Lloyd	1	21505	0	5	.000	.094
Canisteco	2	14827	0	2	.000	.064
Gardner-Mackinaw	3	9250	0	0	.000	.000
C. P. & L. Co.	4	8994	0	0	.000	.000
Spies Virgil	5	4374	0	2	.000	.124
General Storehouse	6	3164	0	0	.000	.000
Wade	7	2242	0	1	.000	.095
Hill Trumbull	8	1694	0	0	.000	.000
Holman Brown	9	1559	0	0	.000	.000
Tilden	10	999	0	0	.000	.000
Alexandria	11	862	0	1	.000	.069
Cliffs Shaft "A"			1	1		
Cliffs Shaft "B"	12	25883	0	1	.039	.029
AVERAGE					.048	.054
Maas	13	22734	2	6	.088	.102
Athens	14	19350	2	2	.103	.047
Negaunee	15	19959	3	5	.150	.097
Miscellaneous	16	2327	1	1	.429	.254
General Roll		28926				
Various Properties		452				
TOTAL ALL PROPERTIES		189101	9	27		

ACCIDENT SEVERITY

NUMBER OF WORKING DAYS LOST PER 1000 DAYS OF LABOR

ON ACCOUNT OF ACCIDENTS OCCURRING IN 1932

	Rank Dec.1932	Days of Labor	Number of Days Lost 1932 - 1931		Rate per 1000 Days 1932 - 1931	
Cliffs Shaft "A"	1	2744	0	0	.000	.000
Cliffs Shaft "B"			0	0		
Maas	2	2445	0	0	.000	.000
Morris Lloyd	3	2232	0	45½	.000	16.545
Spies Virgil	4	709	0	0	.000	.000
C. P. & L. Co.	5	707	0	0	.000	.000
Gardner Mackinaw	6	678	0	0	.000	.000
Canisteco	7	422	0	0	.000	.000
General Storehouse	8	222	0	0	.000	.000
Hill Trumbull	9	98	0	0	.000	.000
Wade	10	97	0	0	.000	.000
Holman Brown	11	93	0	0	.000	.000
Miscellaneous	12	84	0	0	.000	.000
Alexandria	13	68	0	0	.000	.000
Tilden	14	67	0	0	.000	.000
AVERAGE					6.012	1.930
Negaunee	15	2230	22	0	9.865	.000
Athens	16	2004	80½	0	40.120	.000
General Roll		2115				
Various Properties		33				
TOTAL ALL PROPERTIES		17048	102½	45½		

RANK AND RATE FOR THE YEAR 1932

Morris Lloyd	1	21505	0	1944	.000	36.486
Canisteco	2	14827	0	138½	.000	4.433
Gardner-Mackinaw	3	9250	0	0	.000	.000
C. P. & L. Co.	4	8994	0	0	.000	.000
Spies Virgil	5	4374	0	95	.000	5.887
General Storehouse	6	3164	0	0	.000	.000
Wade	7	2242	0	241	.000	22.838
Hill Trumbull	8	1694	0	0	.000	.000
Holman Brown	9	1559	0	0	.000	.000
Tilden	10	999	0	0	.000	.000
Alexandria	11	862	0	86	.000	5.932
Cliffs Shaft "A"			58½	1800		
Cliffs Shaft "B"	12	25883	0	240	2.260	29.636
AVERAGE					7.678	15.553
Athens	13	19350	160½	219	8.294	5.171
Maas	14	22734	349	2102	15.351	35.780
Negaunee	15	19959	723	833½	36.224	16.273
Miscellaneous	16	2327	161	6	69.188	1.523
General Roll		28926				
Various Properties		452				
TOTAL ALL PROPERTIES		189101	1452	7705		

PENSION DEPT. ANNUAL REPORT YEAR 1932

23.

j. Hospitals & Medical Service

Throughout the year this Department has kept in close touch with the hospitals in Ishpeming and Iron River and the dispensary service at Negaunee and Republic.

ISHPEMING HOSPITAL

The Hospital has maintained its standard of fine service and has continued on the accredited list of the American College of Physicians and Surgeons.

Miss Hildur Swanson has continued in charge as Superintendent, having begun her work as Superintendent on July 1, 1930.

In the Fall when it was found there were so few patients coming to the Hospital the second floor was closed to patients, except such as could employ a private nurse, in order to save the expense of the nurses there. The force at the Hospital has been very much reduced and the salaries of those remaining reduced also so that the operating cost of the Hospital is much nearer the receipts.

The staff of the Ishpeming Hospital and the Negaunee Dispensary are as follows:

Dr. V. H. Vandeventer, Chief
 Dr. J. D. Crane
 Dr. P. P. Hartt
 Dr. A. W. Erickson
 Dr. D. R. MacIntyre
 Dr. W. A. Mudge
 Dr. W. A. Corcoran
 Miss Hildur Swanson, Superintendent

During the year regular meetings of the staff have been held each month with Dr. Vandeventer as Chairman.

On the following sheets will be found a summary of the report of the Superintendent of the Hospital for the year.

PENSION DEPT. ANNUAL REPORT YEAR 1932

23.

j. Hospitals (continued)

ISHPEMING HOSPITAL
STATISTICAL REPORT FOR THE YEAR 1932

Number of patients remaining in Hospital at beginning of year		16
Number of adult patients admitted	576	
Number of child patients admitted	54	
Number of births	83	
Total new patients for the year		713
Total of all patients for the year		729
Number of deaths	36	
Number discharged during year	682	
Total number leaving Hospital		718
Number of patients remaining at end of year, Dec. 31, 1932		11
 CLASSIFICATION OF NEW CASES:		
Surgical	398	
Medical	148	
Obstetrical	84	
New Born	83	
Total		713
Number of operations		338
Number of emergency room operations		48
Number of patient days		7956
Number of meals for patients	23868	
Number of meals for nurses, superintendent, & dietitian	15597	
Number of meals for physicians and guests	190	
Number of meals for help	5526	
Total number of meals - - - - -		45181

Average Number of Patients Per day:

1919	12.2
1920	17.6
1921	15.9
1922	16.5
1923	20.1
1924	20.5
1925	19.9
1926	21.3
1927	21.8
1928	25.4
1929	30.1
1930	31.4
1931	29.9
1932	21.8

PENSION DEPT. ANNUAL REPORT YEAR 1932

23.

j. Hospital (continued)

Following will be found a statement showing the number of consultations taken care of by each of the physicians at the hospital, and the number of house calls, these being classified according to the employers of the men and their families. This includes the cases of the Cleveland-Cliffs Iron Co., the Oliver Iron Mining Co., the Hercules Powder Co., Jones & Laughlin Ore Co., the Inland Steel Co., and private cases.

These sheets show the percentage of work done for the people belonging to our own Company.

OFFICE AND HOUSE CALLS OF THE DIFFERENT PHYSICIANS

<u>Office Calls</u>	<u>C.C.I.Co.</u>	<u>O.I.M.Co.</u>	<u>Her- cules Expl.Co.</u>	<u>Jones & Laughlin Ore Co.</u>	<u>Inland Steel Co.</u>	<u>Private</u>	<u>Total</u>	<u>C.C.I.Co. Percent</u>
Vandeventer	2087	216	44		33	528	2908	71.77
Crane	3106	743	117	2	105	227	4300	72.23
H Hartt	3099	912	335	25	52	275	4698	65.96
Erickson	<u>4232</u>	<u>636</u>	<u>96</u>	<u>39</u>	<u>140</u>	<u>306</u>	<u>5449</u>	<u>77.66</u>
Total	12524	2507	592	66	330	1336	17355	72.16
<u>House Calls</u>								
Vandeventer	1078	180	89	6	32	496	1881	57.31
Crane	2515	643	87		68	437	3750	67.07
Hartt	2568	731	458	19	39	506	4321	59.43
Erickson	<u>3723</u>	<u>502</u>	<u>89</u>		<u>55</u>	<u>598</u>	<u>4967</u>	<u>74.75</u>
Total	9884	2056	723	25	194	2037	14919	66.25
<u>TOTAL CALLS</u>								
Vandeventer	3165	396	133	6	65	1024	4789	66.09
Crane	5621	1386	204	2	173	664	8050	69.82
Hartt	5667	1643	793	44	91	781	9019	62.83
Erickson	<u>7955</u>	<u>1138</u>	<u>185</u>	<u>39</u>	<u>195</u>	<u>904</u>	<u>10416</u>	<u>76.37</u>
Total	22408	4563	1315	91	524	3373	32274	69.43

PENSION DEPT. ANNUAL REPORT YEAR 193223.
j. Hospitals (continued)NEGAUNEE DISPENSARYOFFICE AND HOUSE CALLS OF THE DIFFERENT PHYSICIANS

<u>Office Calls</u>	<u>C.C.I.Co.</u>	<u>O.I.M.Co.</u>	<u>Jones & Laughlin Ore Co.</u>	<u>Hercules Expl.Co.</u>	<u>Inland Steel Co.</u>	<u>Private</u>	<u>TOTAL</u>	<u>C.C.I.Co. Percent</u>
MacIntyre	6161	101	19		10	677	6968	88.42
Mudge	11566	79	13	7		1132	12797	90.38
Corcoran	1867	73	8	17	13	105	2083	89.63
Hirwas	<u>158</u>	<u>41</u>		<u>13</u>		<u>20</u>	<u>232</u>	<u>68.10</u>
Total	19752	294	40	37	23	1934	22080	89.45
<u>House Calls</u>								
MacIntyre	2614	8				99	2721	96.07
Mudge	6718	63		6		1229	8016	83.81
Corcoran	1167	108	10	25	5	137	1452	80.37
Hirwas	<u>161</u>	<u>81</u>		<u>12</u>		<u>28</u>	<u>282</u>	<u>57.09</u>
Total	10660	260	10	43	5	1493	12471	85.48
<u>TOTAL CALLS</u>								
MacIntyre	8775	109	19		10	776	9689	90.56
Mudge	18284	142	13	13		2361	20813	87.85
Corcoran	3034	181	18	42	18	242	3535	85.83
Hirwas	<u>319</u>	<u>122</u>		<u>25</u>		<u>48</u>	<u>514</u>	<u>62.06</u>
TOTAL	30412	554	50	80	28	3427	34551	88.02

PENSION DEPT. ANNUAL REPORT YEAR 1932

23.

j. Hospitals (continued)NEGAUNEE DISPENSARY

The plan of using the former hospital building for the Doctor's offices and a dispensary has continued to work out well, all hospital cases being taken to the Ishpeming Hospital.

On February 1st, a reduction in the medical force was put into effect and Dr. Hirwas was let out and Dr. Corcoran was taken from Ishpeming to Negaunee.

The following physicians now have their offices in the building and look after the Negaunee work:

Dr. D. R. MacIntyre
Dr. W. A. Mudge
Dr. W. A. Corcoran

REPUBLIC HOSPITAL

Dr. Van Riper of Champion goes to Republic regularly for one hour each day and at such other times as he is called. Dr. Van Riper is exceedingly conscientious in his work and has done a great deal of work for which there can be no payment, but he receives some payment from the County as Poor Physician, which helps to reimburse him for the work.

GWINN

Dr. R. A. Burke of Negaunee and Palmer is in charge of the medical service for the district, and has an assistant, Dr. P. N. Wharton, living and having his office in Gwinn.

IRON RIVER

The new Hospital has now had a year of service and it has been very satisfactory in all respects. This is covered by the report of Mr. Meyers.

Payments to Physicians

On August 1, 1927 a new rate of payment for our Company went into effect. The men pay \$1.25 for the medical service for themselves and immediate members of their families, the Company paying \$.50 per man per month to cover medical and hospital services under the provisions of the Workmen's Compensation Law.

PENSION DEPT. ANNUAL REPORT YEAR 1932

23.

j. Medical Service (continued)PHYSICAL EXAMINATIONS OF EMPLOYEES:

Any new man put to work has first been sent to the physician for a complete examination, this examination being reported to this office, and if found satisfactory the mine at which he is to be employed is so notified. In some cases in which the examination has shown some disability the matter has been taken up with Mr. Elliott and decision reached as to whether the man should be employed or not. In most of these cases the men have been asked to put themselves under the doctor's care, and in some instances their improvement has been sufficient to enable them to go to work.

Previous to the reopening of the mines in November it was decided that all of the men should be re-examined and they, therefore, have been sent to the physicians and the report handled in the regular way. The doctors have expressed themselves as gratified with the physical condition of the men.

The re-examinations up to the end of December 1932 are as follows:

Cliffs-Shaft	258
Morris-Lloyd	106
Negaunee	238
Maas	207
Athens	133
Gardner-Mackinaw	36
Spies-Virgil	<u>66</u>

Total..... 1044

PENSION DEPT. ANNUAL REPORT YEAR 1932

23.

k. Health

All of our cities had been quite free from contagious diseases until early in the winter, since which time there has been quite an epidemic of influenza. It was not of such a serious character as that in 1917 and 1918 and in one subsequent year, but there have been quite a few deaths from pneumonia resulting from it.

The health officers of our three principal cities of the County have been very active and have done good work throughout the year. They are as follows:

Ishpeming - Dr. G. G. Barnett
Negaunee - Dr. W. A. Mudge
Marquette - Dr. T. R. Laughbaum

l. Red Cross

The following officers have continued through the year 1932:

President - Thomas Redmond, Marquette
Vice- " - Phillip Levine, Negaunee
Secretary - R. J. Cheneour, Ishpeming
Treasurer - E. S. Bice, Marquette

Of the Ishpeming Branch, Thomas Clancey has continued as Chairman.
Of the Negaunee Branch, F. A. Bell has continued as Chairman.

As was expected, the annual Red Cross canvas for members did not yield returns as in previous years, but it was more satisfactory than the officers had expected.

Mr. Walter Gries has continued as chairman of the Nursing Activities Committee of the chapter. Mrs. A. L. Johnson has continued as County Nurse under the direction of the Nursing Activities Committee of the Red Cross. Her salary and expenses are paid by the County, the committee directing her work by request of the County Board of Supervisors. Her report for the fiscal year ending September 1st, will be found on the following pages.

PENSION DEPT. ANNUAL REPORT YEAR 1932

23.
1. Red Cross (continued)

REPORT OF MARQUETTE COUNTY NURSE
Fiscal year ending September 1, 1932

School Examination.	
Number of Schools in County	43
Number of Schools examined	43
Number of children	2020
Number of Children found with defects Sept. 1, 1931 to Sept. 1, 1932	
Eyes	33
Teeth	1656
Tonsils	192
Ears	5
Orthopedic	1
Total	<u>1887</u>
Number of corrections made by parents Sept. 1, 1931 to Sept. 1, 1932	
Eyes	7
Teeth	163
Tonsils	34
Total	<u>204</u>
Number of corrections made by Red Cross Sept. 1, 1931 to Sept. 1, 1932	
Eyes	8
Tonsils & Adenoids	7
Total	<u>15</u>
Number of corrections made and paid for by Republic C.C.I.Co. Fund	
Eyes	1
Tonsils and Adenoids	1
Dental	3
Total	<u>5</u>
Total No. corrections made by Parents, Red Cross & C.C.I.Co. Fund	
	224
Number of days spent at Clinics	
Crippled Children's clinic	2
Mental	4
Chest	2
Total	<u>8</u>
Number of Children taken to Hospitals and Schools.	
Orthopedic cases to Ann Arbor	55
Deaf & Dumb Schools at Flint	6
School for Blind at Lansing	1
Children's Hospital at Detroit	2
Northern Michigan Children's Clinic at Marquette	9
Crittendon Home at Detroit	2
Total	<u>75</u>
Investigations Made	
Veteran's Bureau Detroit	2
For Ann Arbor	9
County Poor	12
Cleveland Associated Charities	14
Home Calls	711
Total	<u>748</u>

PENSION DEPT. ANNUAL REPORT YEAR 1932

23.

1. Red Cross (continued)Meetings Attended.

District Nurses Meetings	10
Red Cross Meetings	2
T. B. Seal Meetings	2
Nursing Activities	4
Parent Teachers Meetings	2
Nursing Meeting at Saginaw - 3 days	6
Health Conference at Lansing - 4 days	4
Home Hygiene Conf. at Children's Clinic at Marquette	1
County Agents meeting at Marquette	1
Health Meeting in County with speaker from State Health Dept. ...	3
Health Lectures by Dr. Walk	4
With Miss Akiner National Relief Worker from Washington - 1 day	1
T. B. Booth at County Fair	1

Special Work

Brought 7 children to the Northern Michigan Children's Clinic, who had had infantile paralysis, where they gave blood for the cure of new cases developing.

Gifts

300 bushels potatoes from Mr. Perkins - Huron Mt. Club.
 20 bushels potatoes from Mr. Perkins - Huron Mt. Club.
 \$32.00 cash from children of Huron Mountain Club.

Martha C. Johnson, R. N.
 Marquette County Red Cross Nurse

PENSION DEPT. ANNUAL REPORT YEAR 1932

23.

m. Relief Work

Help has been extended to certain families who have been in special need, through sickness or death, or special disability.

Following is a list of the assistance rendered:

	<u>Ishpeming</u>	<u>Negaunee</u>	<u>North Lake</u>	<u>Republic</u>	<u>Gwinn</u>	<u>Total</u>
January	\$ 286.09	\$ 210.75	\$ 28.51	\$ 27.25	\$	\$ 552.60
February	309.09	137.17	69.90	36.00	9.78	561.94
March	201.48	265.43	20.96	18.25	10.39	516.51
April	169.59	149.68	13.41	18.06	19.45	370.19
May	244.61	200.64		18.23	17.77	481.25
June	100.70	100.25		9.01	9.00	218.96
July	106.34	69.12		16.97	9.20	201.63
August	113.16	112.53		26.20		251.89
September	64.34	85.66		5.65	9.04	164.69
October	76.87	103.70		36.02	15.05	231.64
November	101.96	88.54		13.20	9.27	212.97
December	<u>209.43</u>	<u>96.09</u>	<u>10.00</u>	<u>45.63</u>	<u>8.32</u>	<u>369.47</u>
TOTAL	1983.66	1619.56	142.78	270.47	117.27	4133.74
No. of families assisted	39	30	6	3	3	81
Average amount of Relief per Family	-	-	-	-	-	\$ 51.03

23.

n. Employment

The records of employment are kept in this Department, although from lack of clerical assistance the records are not now up to date. These will be gone over and corrected as opportunity permits.

PENSION DEPT. ANNUAL REPORT YEAR 1932

23.

c. Incapacitated Employes

During the year payments have continued to certain men whose years of service do not bring them within the provisions of the Pension System. These men are those who have become incapacitated after a considerable period of service and some with very large families and who have been injured in our employment.

Some widows of men who lost their lives in previous years are included in this list.

The following is a statement of the families to whom these donations have been made:

DONATIONS TO INCAPACITATED EMPLOYES

	<u>Monthly Rate for Yr. 1932</u>	<u>Total Amount paid during 1932</u>	
Fred Fredette	\$ 20.00	\$ 240.00	
Sam Metherell	14.40	172.80	
August Samuelson	20.00	240.00	
John Aho	14.40	172.80	
Bennett Andrews	16.00	192.00	
Thomas Davey	16.00	192.00	
Andrew Niemi	16.60	199.20	
Edmond Durante	20.00	240.00	
August Walline	20.00	240.00	
Isaac Nikka	20.00	240.00	
Axel Erickson	20.00	240.00	
Edw. Van Langenhoven	20.00	240.00	
Nick Detoma	18.00	216.00	
Edwin J. Goodman	20.00	240.00	
Nestor Holm	20.00	80.00	Died Apr. 2, 1932.
Richard S. Johns	20.00	220.00	Died Nov. 12, 1932
Henry Maki	20.00	240.00	
John Perry	20.00	20.00	Died Jan. 10, 1932
Donato Valenzio	20.00	240.00	
William Anderson	20.00	240.00	
Fred Carlson	16.00	192.00	
Peter Johnson	20.00	40.00	Died Feb. 1, 1932
Napoleon Mayrend	17.66	211.92	
	<u>\$ 429.06</u>	<u>\$ 4548.72</u>	

HOLMES MINE DONATIONS

Peter Lesage	20.00	240.00	
Carl Jarvinen	16.99	203.88	
Bernt Wiggen	20.00	240.00	
Martin Trondson	20.00	240.00	
Evan Kinnish	20.00	240.00	
William Mitchell	12.00	24.00	Died Feb. 18, 1932

PENSION DEPT. ANNUAL REPORT YEAR 193223.
o. Incapacitated Employes (continued)DONATIONS TO WIDOWS

	<u>Monthly Rate for year 1932</u>	<u>Total Amount paid during 1932</u>
Mrs. John Makela	\$ 20.00	\$ 240.00
Mrs. Rose Bertucci	12.00	144.00
Mrs. Wilhelmina Marjamaa	12.00	144.00
Mrs. Henry Karkkainen	12.00	144.00
Mrs. Matilda Carlson	12.00	144.00
Gust Myllimaki Estate	12.00	144.00
Mrs. Kate Tuomela	<u>16.00</u>	<u>192.00</u>
	\$ 96.00	\$ 1152.00

Amount of Donations paid to Incapacitated Employes during 1932	\$ 4548.72
Amount of Donations paid to Incapacitated Holmes Mine Employes	1197.88
Amount of Donations paid to Widows during 1932 - - - -	<u>1152.00</u>
TOTAL -	\$ 6888.60

PENSION DEPT. ANNUAL REPORT YEAR 1932

23.

p. Cost of Living

We have continued to send out our report blanks on the 15th of each month to various stores in our different communities upon which are reported the prices of the different commodities considered by the United States Government in computing the cost of living.

This serves to advise the store keepers that we are keeping track of the prices which they are charging which we believe has served in some measure to keep the prices in our various stores at a somewhat reasonable figure.

We have made one complete calculation of Cost of Living, this being on December 1, 1932.

The following tabulation shows comparison with previous years based on a family of five.

June 1913	-	\$ 692.56
June 1914	-	706.17
June 1917	-	1006.79
June 1920	-	1408.65
June 1921	-	1054.28
June 1924	-	1015.83
Dec. 1925	-	1049.16
Oct. 1931	-	910.82
Dec. 1932	-	752.52

The Government reports show that the index number for cost of living in November 1932 as compared with 1914, is 121.94. This gives the value of \$1.00 as compared with its value in 1914, .82.

From our own calculations and prices furnished to us by the merchants here the cost of living in Ishpeming is a little lower than in some other places. Our index figure for the cost of living as compared with 1914 is 106.56. The value of \$1.00 as compared with its value in 1914 is 93.84

q. Improvement Work

The services of Mr. Warren H. Manning were dispensed with during the season of 1932. Mr. Julian Payen looked after the regular work and there was no new work undertaken, except that at the ground at the new hotel, which had been planned by Mr. Manning and who was here twice in the early part of the year to see that everything was carried out satisfactorily.

PENSION DEPT. ANNUAL REPORT YEAR 1932

23.

r. Prize Premises

On account of the business depression it was decided not to offer prizes for the Best Kept Premises and Vegetable Gardens for the season of 1932.

s. Community Service Work

The Legion Building and Y. M. C. A. at Ishpeming are serving the City as a meeting place for activities of all kinds.

The Legion Building at Negaunee, opened in 1927, has also worked out very satisfactorily.

t. Clubs

On account of the men being out of work it was thought best not to make collections for The Cleveland-Cliffs Iron Mining Club, and no meetings were held during the year.

u. Outdoor Sports

The Department helped in connection with the Ski Tournament which was held on February 22nd. This was conducted in an economic manner at no great cost to anyone, and thought it was beneficial at the time when there was so little work being done.

During the summer a large number of baseball teams played Kitten Ball. They were organized under the direction of the Y. M. C. A. and games were played every week-day evening throughout the different parts of the city. It was exceedingly popular and people attended in very large number throughout the whole season and it kept them interested during the time when there was no work at the mines and very little being done anywhere.

PENSION DEPT. ANNUAL REPORT YEAR 1932

23.

w. Various Departments

Throughout the year we have cooperated with the different departments in the matter of accident cases and Workmen's Compensation and Medical Service. We have given special attention to the cases of the Lumbering Dept. work now being handled by the Land Department, and also with the Furnace Department.

An old case of considerable importance was brought up on account of an injury to a man in 1917 at the Gladstone Furnace, hearing being held in Escanaba by the Deputy Commissioner, which was decided in our favor. On appeal hearing was held before the Full Commission in Marquette and the decision was still in our favor. At the time of writing this report the thirty days are nearly up in which the attorneys for this man have the right to bring the matter before the Supreme Court, but we have not heard anything of it and we do not expect that it will be taken up higher.

The Welfare Statements covering compensation costs will be found on the following sheets.

PENSION DEPT. ANNUAL REPORT YEAR 1932

23.
w. Various Departments (continued)

LAKE SUPERIOR & ISHPEMING RAILROAD CO.

COMPARATIVE STATEMENT OF GENERAL WELFARE EXPENSE

FOR THE YEARS 1928 to 1932 INCLUSIVE

	<u>1928</u>	<u>1929</u>	<u>1930</u>	<u>1931</u>	<u>1932</u>
<u>Donations:</u>					
Fire Department	45.00	35.00	35.00	35.00	30.00
Celebrations			100.00		
Ishpeming Y. M. C. A.		200.00	200.00	200.00	
Visiting Nurse - Marq.	120.00	90.00	120.00	120.00	120.00
Munising Hospital					
St. Lukes Hospital	400.00	400.00	400.00	400.00	400.00
To Employes & Families	690.00				200.00
Pensions	<u>432.00</u>	<u>396.00</u>	<u>947.85</u>	<u>1165.34</u>	<u>2207.88</u>
	1687.00	1121.00	1802.85	1920.34	2957.88
<u>Compensation:</u>					
Compensation Paid	2371.65	3264.71	2465.53	2308.00	3249.20
Medical Expense	1169.95	1076.21	535.29	693.21	305.81
Percentage of Payrolls					
Act. Comp. Payments	.0026	.0033	.0027	.0027	.0096

PENSION DEPT. ANNUAL REPORT YEAR 1932

23.
w. Various Departments (continued)

LAND DEPARTMENT

COMPARATIVE STATEMENT OF GENERAL WELFARE EXPENSE

FOR THE YEARS 1929 TO 1932 INCLUSIVE

<u>General Welfare Acc. #11.</u>	<u>1929</u>	<u>1930</u>	<u>1931</u>	<u>1932</u>
A-2 Prop. Chgd. By Treas.	244.20	217.13	821.38	318.08
11-F Miscellaneous Expense	810.96	810.96	810.96	523.47
	<u>1055.16</u>	<u>1028.09</u>	<u>1632.34</u>	<u>841.55</u>
 <u>Donations</u>				
Negaunee Fire Department	10.00	10.00	10.00	10.00
Munising Baseball Club				
Munising Fire Department			10.00	10.00
U. P. Development Bureau	750.00	750.00	750.00	500.00
John Ripley				
Munising Golf Club				
Alger County Club		9.16		
D. W. McDougall		61.00		
Forest Taxation		300.00		
Sacred Heart Church - Munising			12.31	
Brotherhood of R.R. Trainmen-#612 Marquette			10.00	
Xmas presents to School Children- Logging Operations				25.00
 <u>Compensation</u>				
a. funeral expense				
d. legal expense				
g. medical expense		10.55		
h. compensation	380.00	286.80	99.00	
i. monthly payments to doctors	87.00	89.00	99.50	82.50
Percentage of Payrolls				
Actual Compensation Payments	.02204	.00552	.00146	- - -
 <u>Safety Work - Logging Operations:</u>				
Supplies			129.09	
 <u>Compensation - Logging Operations:</u>				
Medical and Hospital			6798.12	3106.16
Compensation Payments			6882.28	5394.33
Percentage of Payroll			.07166	.10841

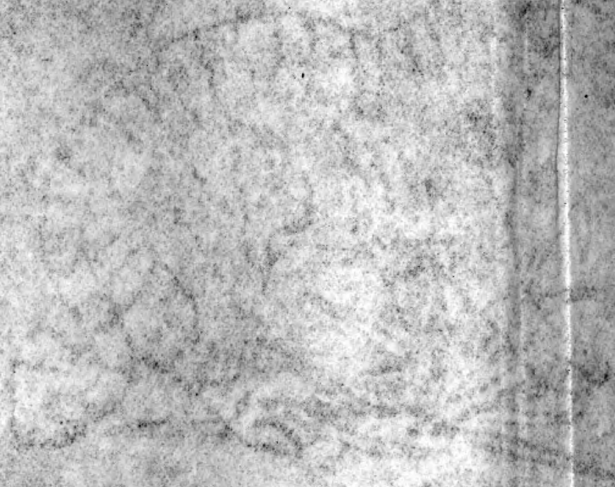
PIONEER IRON COMPANY FURNACE DEPT.COMPARATIVE STATEMENT OF GENERAL WELFARE EXPENSE
YEARS - 1929, 1930, 1931 and 1932

	<u>1929</u>	<u>1930</u>	<u>1931</u>	<u>1932</u>
<u>General Welfare Acct. #11</u>				
A-2 Prop. Charged by Treas.	1,703.11	1,522.78	771.85	438.98
B Prizes to Tenants				
Xmas Baskets	10.63	25.11		
Community Chest	281.25			
Flowers-Deceased Employees	10.00		22.00	5.00
Marq. Independent Basketball League		16.00		
Dinner for employees who assisted Alfred Malette		48.75		
<u>Donations:</u>				
American Legion			12.00	
Fire Department	10.00		10.00	5.00
Persons (Mrs.Orhonen & Mrs. Cameron)	350.00	427.18	673.00	681.00 #
House Rents	90.00			
Golf Club				
B. of R.T. (Railroad Trainmen)	10.00			5.00
Soceties				
Community Chest		375.00	375.00	281.25
Michigan Regimental Reunion		25.00		
<u>Institutions</u>				
St.Luke's Hospital	400.00	400.00	400.00	100.00
Tubercular Stamps			10.00	5.00
	<u>2,864.99</u>	<u>2,839.82</u>	<u>2,273.85</u>	<u>1,521.13</u>
<u>Pensions Paid</u>	<u>6,137.02</u>	<u>6,191.42</u>	<u>5,531.30</u>	<u>3,327.09</u>
TOTAL	9,002.01	9,031.24	7,805.15	4,848.22
<u>Safety Work</u>				
Charges for work and equipment	63.75	70.58	41.18	53.04
<u>Compensation</u>				
Medical & Hospital Expense	3,362.12	3,861.51	1,664.37	1,938.61
Compensation Paid	2,699.42	2,204.81	1,795.54	1,209.16
<u>Compensation Payments-</u> <u>Percentage of Payrolls</u>				
Marquette Plant	.005573	.004762	.008992	.0093413

1932

#Detail of Donations - Persons - Mrs. Cameron \$240.00
Mrs. Pellinen 220.00
Mr. Olson 200.00
Mrs. Wilder 10.00
Mrs. Cameron 11.00 (wood)

1850



EMERSON

