

*ANALYSIS OF

1. PASSENGER.

	LOCAL FARES.	THROUGH FARES.	TOTAL PASSENGER FARES.	EXPRESS AND BAGGAGE.
Main line and branches, LEASED OR PROPRIETARY ROADS.—(Enter each separately.)	462654	✓	462654	139944
Total passenger department earnings,	462654	✓	462654	139944

2. FREIGHT.

	LOCAL TRAFFIC.	THROUGH TRAFFIC.
Main line and branches, LEASED OR PROPRIETARY ROADS.—(Enter each separately.)	792138	930670
Total freight department earnings,	792138	930670

*This information must always be given.

EARNINGS.—In State of Michigan.

EARNINGS.				
MAILS.	OTHER SOURCES.	TOTAL.	PER TRAIN MILE.	PER MILE OF ROAD.
✓	✓	602598	55	22352
✓	✓	602598	55	22352

EARNINGS.				
TOTAL TRAFFIC.	OTHER SOURCES, FREIGHT DEPARTM'T.	TOTAL.	PER TRAIN MILE.	PER MILE OF ROAD.
1722808	577851	2300659	351	85336
1722808	577851	2300659	351	85336

ANALYSIS OF EARNINGS.—Continued.

1. Total transportation earnings, entire line,			2903257
2. Transportation earnings per mile of road,			107688
3. Transportation earnings per train mile,			145
4. Miscellaneous receipts from operating account, other than for transportation, as follows:*			
From car mileage,			
From switching charges,			
From telegraph companies,			
From rents of tracks, yards and terminals,			
From rents not otherwise provided for,			
From other sources,			
		361306	
	Total, \$	361306	361306
5. Distribution of miscellaneous earnings between main line and leased or proprietary roads,			
COMPANY.	TOTAL MISCELLANEOUS.		PROPORTION FOR MICHIGAN.
6. Total earnings from operation road,			3264563
7. Total earnings per mile of road,			121089
8. Total earnings per train mile,			162
9. Total taxable earning per mile of road in Michigan,			121089
10. Income other than from earnings,			199919
11. Total income from all sources,			\$ 3464282
12. Proportion of income for Michigan,			ALL

*This should include only such items as are not strictly transportation earnings, such as rents for joint use of tracks, station houses and other miscellaneous receipts connected with the property itself. Interest and dividends on stock, or securities held by the Company will be taken up in the General Exhibit, page 6, and given in answer to interrogatory 11 above.

ANALYSIS OF EXPENSES.

CLASS 1.—MAINTENANCE OF WAY AND STRUCTURES.

1. Repairs of roadway,		443141
2. Renewals of rails,		
3. Renewal of ties,		
4. Repairs and renewals of bridges and culverts,		6761
5. Repairs and renewals of fences, road crossings, signs and cattle guards,		596
6. Repairs and renewals of buildings and fixtures,		18277
7. Repairs and renewals of docks and wharves,		
8. Repairs and renewals of telegraph,		4333
9. Stationery and printing,		616
10. Other expenses,		
Total,	\$	493724

CLASS 2—MAINTENANCE OF EQUIPMENT.

11. Superintendence,		100
12. Repairs and renewals of locomotives,		64230
13. Repairs and renewals of passenger cars,		14511
14. Repairs and renewals of freight cars,		30737
15. Repairs and renewals of work cars,		48860
16. Repairs and renewals of marine equipment,		
17. Repairs and renewals of shop machinery and tools,		
18. Stationery and printing,		316
19. Other expenses,		
Total	\$	160954

CLASS 3—CONDUCTING TRANSPORTATION.

20. Superintendence,		19500
21. Engine and roundhouse men,		501613
22. Fuel for locomotives,		353424
23. Water supply for locomotives,		12635
24. Oil, tallow and waste for locomotives,		8044
25. Other supplies for locomotives,		3842
26. Train service,		96726
27. Train supplies and expenses,		23114
28. Switchmen, flagmen and watchmen,		247574
29. Telegraph expenses,		16846
30. Station service,		99815
31. Station supplies,		17266
32. Switching charges,		
33. Car mileage,		
34. Hire of equipment,		154646
35. Loss and damage,		223
36. Injuries to persons,		2940
37. Clearing wrecks,		5626
38. Operating marine equipment,		
39. Advertising,		4651
40. Outside agencies,		
41. Commissions,		
42. Stock yards and elevators,		
43. Rents for tracks, yards and terminals,		1000
44. Rents for buildings and other property,		6225
45. Stationery and printing,		38889
46. Other expenses,		
Total	\$	1314599

ANALYSIS OF EXPENSES.—Continued.

CLASS 4.—GENERAL EXPENSES.

47. Salaries of general officers,			545	50
48. Salaries of clerks and attendants,			651	66
49. General office expenses and supplies,			221	44
50. Insurance,			456	02
51. Law expenses;			27	00
52. Stationary and printing (general offices),			390	26
53. Other expenses,				
54. Taxes,			626	033
TOTAL,	\$		8429	21

RECAPITULATION OF EXPENSES.

	PER CENT OF EXPENSES.			
1. Maintenance of way and structures,	1696		4737	24
2. Maintenance of equipment,	577		1607	54
3. Conducting transportation,	4708		13145	99
4. General expense, including taxes,	3019		8429	21
5. TOTAL OPERATING EXPENSES AND TAXES,	10000		27919	98
6. Operating expenses and taxes per mile of road,			1035	61
7. Operating expenses and taxes per train mile run, for trains, earning revenue $\$0073$ miles],			139	
PROPORTION OF OPERATING EXPENSES AND TAXES FOR MICHIGAN,				
8. Main line,			acc	
*LEASED OR PROPRIETARY ROADS.				
Total proportion of Expense for Michigan,	\$		acc	
9. Percentage of expenses to earnings [85.52%],				
10. Net earnings per mile of road,			175	28
11. Net earnings per train mile,			2335	

INSTRUCTIONS FOR ANSWERING QUESTIONS ON NEXT PAGE.

There shall appear on the next page *some notation* to indicate that the questions asked have not been overlooked. The word "None" may be used for a whole page; or under any column heading; or against any particular item or items, where that word expresses the *facts*. In other cases refer by note to *this* page, as for example, "See page 19," where a brief explanation should be given why specific data called for can not be returned *exactly as requested*.

In the column headed "Number," state the number of employees in each class as determined from the pay rolls on Dec. 31, 1902. It is not intended that laborers engaged in the construction of new line should be included among railway "Employees." Under "Total number of days worked" give the aggregate number of days worked by all the employees of each class named during the year covered by this report. Under "Total yearly compensation" give the aggregate compensation paid all the employees in each class named during the year covered by the report. To obtain "Average daily compensation," divide the "Total yearly compensation" of any class by the "Total number of days worked" by that class. It should be especially noted that "Number" of employees on Dec. 31, 1902, is not to be accepted as a basis for computing "Average daily compensation."

In returning "General Officers" state the total number on page 20, give below on this page (19) the number receiving no compensation, if there are any such, and compute the "Average daily compensation" for this class on the basis of those only receiving compensation. In case the "General Officers" and "General Office Clerks," returned in the financial report of a subsidiary road, are not in service the entire time during the year, there may be entered as "Total number of days worked" (provided no accurate record of such service has been kept) the number of days fairly representing the time devoted to the affairs of the company during the year.

Under the head of "Other Officers," give all officers not included among "General Officers" nor properly classed as "General Office Clerks."

Under "Distribution of Above," data should be given only against the four subheadings printed, and in making the distribution called for, if nothing is to be returned opposite any one or more of these subheadings, the same should be explained briefly, especially when figures are returned on pages 17 and 18 under the four corresponding subheadings of "Operating Expenses." The four items against each "Total" in the lower part of the table should *agree exactly* with similar entries opposite corresponding "Total" above; the same remark applies to data returned against "Less 'General Officers.'" "

EXPLANATORY REMARKS.

*Four General Officers receive part salary
from this Company*

EMPLOYEES AND SALARIES—STATE OF MICHIGAN.

CLASS.	NUMBER.	TOTAL NUMBER OF DAYS WORKED	TOTAL YEARLY COMPENSATION.	AVERAGE DAILY COM- PENSATION
General Officers,	4	208	37500	156
Other Officers,				
General Office Clerks,	2	288	69000	240
Train Dispatchers,				
Station Agents,	1	156	36000	231
Other Station Men,	4	312	63000	202
Enginemen,	2	245	75000	306
Firemen,	2	245	50600	207
Conductors,	2	245	73200	300
Other Trainmen,	3	342	72600	212
Machinsits,				
Carpenters,				
Other Shopmen,				
Section Foremen,	5	780	150000	190
Other Trackmen,	15	2340	351000	150
Switchmen,				
Flagmen and Watchmen,	3	552	81000	147
Telegraph Operators,				
Employees—account Floating Equipment,				
All other Employees and Laborers,	1	156	33000	212
TOTAL (Including "General Officers")—MICHIGAN,	44	5869	1086900	185
Less "General Officers,"	4	208	37500	156
TOTAL (Excluding "General Officers")—MICHIGAN,	40	5661	1054400	186
DISTRIBUTION OF ABOVE:				
General Expenses,	6	496	101500	205
Maintenance of way and Structures,	24	3848	582000	152
Maintenance of Equipment,				
Conducting Transportation.	14	1515	403400	261
TOTAL (Including "General Officers")—MICHIGAN,	44	5869	1086900	185
Less "General Officers,"	4	208	37500	156
TOTAL (Excluding "General Officers")—Michigan,	40	5661	1054400	186
TOTAL (Including "General Officers")—ENTIRE LINE,	44	5869	1086900	185

DESCRIPTION OF ROAD.

1. *Date when the road was opened for use between its present termini:

FROM	To	DATE
<i>Marquette</i>	<i>Lawson</i>	<i>July 1st 1902</i>

MAIN LINE,		Miles.	100ths.	Miles.	100ths.
In other States.	2. †In Michigan, from <i>Mar Yard (Marquette)</i> to <i>Lawson</i>			<i>5696</i>	
	“ from to				
	“ from to				
	3. Total Length Completed,			<i>5696</i>	
	4. Length of double track on main line,				
BRANCHES.					
Name of Each.	from to				
	from to				
	from to				
	from to				
	5. Total length of branches owned by company,				
	6. “ “ “ “ “ “ “ “ in Michigan,				
	7. “ “ road belonging to this company,				
	8. “ “ “ “ “ “ “ “ in Michigan,				
	9. †Aggregate length in Michigan of sidings, spurs and other tracks not above enumerated,			<i>296</i>	
	10. †Aggregate length of tracks in Michigan belonging to this company, computed as single track,			<i>5992</i>	
	11. Gauge of track. <i>4</i> feet <i>8 1/2</i> inches,				

*Give main line and branches separately with a full description of each.—COM. OF RAILROADS.
 †Length in all cases to be given in miles and decimals. Give main line and branches separately with a full description of each.
 ‡These two items are of importance to the department, and it is desired that the answers should be accurately given.

DESCRIPTION OF ROAD—Continued.

PROPRIETARY OR LEASED ROADS OPERATED BY THIS COMPANY.	TOTAL MILES.	IN MICHIGAN.
1. Name, description and length of each, <i>None</i>		
2. Total,		
3. Total miles operated by the company,		

NUMBER OF BRIDGES AND TRESTLES IN MICHIGAN.

1. Wooden bridges, number of ; aggregate length, feet,	
2. Stone " " ; " " "	
3. Iron " " ; " " "	
4. Combin't'n " 2 ; " " "	
5. Wooden trestles, " 12 ; " " "	10155
6. TOTAL,	3449
	1360.4

DESCRIPTION OF ROAD.—Continued.

DRAW BRIDGES IN MICHIGAN.

1. How many on your line?
2. Where located, when built, and length of draw span,

None

3. Character of structure,
4. Material of which constructed,
5. Height above water, and depth of water under bridge,
6. How swung, by engine or hand power,
7. Approaches straight or curved,
8. Do you require all trains to come to full stop before crossing a draw, and how are they signaled?

CROSSINGS—RAILROAD AND HIGHWAY.

1. What railroads cross your road at grade in in this State, and at what locality?

<i>D.S. & A</i>	R. R. at	<i>Marquette</i>	<i>4</i>
<i>M. C. & P. I. Ry (Street)</i>	R. R. at	"	<i>1</i>
<i>Dead River R R</i>	R. R. at	"	<i>1</i>
	R. R. at		
	R. R. at		
	R. R. at		
	R. R. at		

2. What railroads cross your road either over or under your grade in this State, and where?

<i>Over.— D.S. & A</i>	R. R. at	<i>Marquette</i>	<i>3</i>
	R. R. at		
<i>Under.—</i>	R. R. at		
	R. R. at		

DESCRIPTION OF ROAD—Continued.

CROSSINGS—RAILROAD AND HIGHWAY.

3. At what crossings are interlocking and derailing switches in operation?

<i>D.S. & A. Ry</i>	<i>Marquette</i>	<i>4</i>
<i>M. & P. Ry</i>	"	<i>1</i>
<i>Dead River Rd</i>	"	<i>1</i>

4. What pattern or patterns have you adopted?

Union Switch & Signal Co

5. Number of crossings of highways at grade in this state,

16

6. Number of crossings of highways at grade in this state at which there are gates or flagmen,

0

7. Number of crossings at which there are electric or automatic signals,

2

8. What pattern or patterns in use? *Chicago Ry Equipment Co*

9. Number of crossings of highways over or under railroad [Over . Under],

10. Number of highway bridges 18 feet above track,

11. Number of highway bridges, less than 18 feet above track,

12. Have safety guards been erected at overhead obstructions?

Yes

13. Are your frogs and guard rails blocked as required by act 174, Session Laws, 1883?

"

14. How are they treated? *Blocked with wood*

STATIONS.

1. Number of stations on whole lines,

4

2. Same in Michigan,

4

EMPLOYES.

1. Number of persons regularly employed on all roads operated by company, including officials,

44

2. Same in Michigan.

44

3. Classify your employes as per following list:

NUMBER.

Baggagemen,

3

Brakemen,

2

Conductors,

2

Engineers,

2

Firemen,

2

Laborers,

20

Shopmen,

Yardmen,

Others,

15

DESCRIPTION OF ROAD.—Continued.

REPAIRS AND RENEWALS.

FENCING IN MICHIGAN.

- | | |
|--|----|
| 1. How many miles of fencing have you? | 40 |
| 2. Give the number of miles required to complete fence both sides of your track in Michigan, and the counties in which needed: | 14 |

Allin Marquette Co

Total miles required,

ROAD BED AND TRACK.

- | | | | | |
|--|---|---|---|-----|
| 1. Number of track sections in Michigan, | | | | 5 |
| 2. Average length of sections (miles), | | | | 5.4 |
| 3. Average number of men in each section gang, | | | | 4 |
| 4. Number of new ties put in whole line during the year, | | | | |
| 5. Number of new ties put in track in Michigan, | " | " | " | " |
| 6. Average number of new ties per mile of road, | " | " | " | " |
| 7. New rails put in track, | " | " | " | " |
| Iron [tons] miles, | | | | |
| Steel[tons] miles, | | | | |
| 8. Total miles of track laid with new rails, | | | | |

Line completed in 1902

BRIDGES AND CULVERTS.

- | | | | | |
|---|---|---|---|---|
| 1. Amount of trestlework replaced with earth during the year (linear feet), | " | " | " | " |
| 2. Timber culverts replaced during year, | " | " | " | " |
| With iron pipe,—number, | " | " | " | " |
| With sewer pipe,—number, | " | " | " | " |
| With timber,—number, | " | " | " | " |

DESCRIPTION OF ROAD.—Continued.

3. New bridges built during the year—Number,

LOCATION.	KIND.	MATERIAL.	MONTH BUILT.	FEET IN LENGTH.
	<i>None</i>			

ROLLING STOCK.

	NUMBER.	PRESENT ESTIMATED VALUE	
1. Number of locomotives of more than 30 tons weight, exclusive of tender,	2	7516 65	
2. Number of locomotives of 20 to 30 tons weight, exclusive of tender,			
3. Number of locomotives of 10 to 20 tons weight, exclusive of tender,			
TOTAL,	2	7516 65	
4. Number of passenger cars—12-wheel, including official cars,			
5. Number of passenger cars—8-wheel, including official cars,			
6. Number of express and baggage cars,			
7. Number of box freight cars,	25	20559 46	✓
8. Number of stock cars,	<i>None</i>		
9. Number of platform cars,	100	75114 25	✓
10. Number of ore cars,	<i>None</i>		
11. Number of conductors' way cars,	"		
12. Other cars as follows: <i>Steam Shovel</i>	1	5674 50	✓
Total, No.	126	\$ 108864 86	
13. Number of locomotives equipped with power brakes,	2		
14. Number of passenger-train cars equipped with power brakes,			
15. Number of freight cars equipped with power brakes,	125		
16. What patterns of power brakes have you in use, and number of locomotives and cars with each?			
<i>All Engines & Cars Equipped with Washburn Automatic Brakes</i>			

ROLLING STOCK.—Continued.

- 18. Are your freight cars being equipped with automatic couplers as required by Act. No. 147, Session Laws of 1885, as amended by act No. 88, Session Laws of 1887? *Yes*
- 19. What pattern or patterns have you adopted for use? *Buckeye*
- 20. How are your passenger cars heated? *This company does not own any any Passenger Cars.*

MILEAGE, TRAFFIC, ETC.

TRAIN MILEAGE.	ENTIRE LINES.	IN MICHIGAN.
1. Miles run by passenger trains during the year,		<i>109 14</i>
2. Miles run by freight trains during the year,		<i>9159</i>
3. Miles run by mixed trains,		
4. Total mileage of trains earning revenue,	<i>all in Michigan</i>	<i>20073</i>

MILEAGE, TRAFFIC, ETC.—Continued.

PASSENGER TRAFFIC.—Entire Lines:

	NUMBERS.	MILES.		RATE. Dollars. Cts	
1. Number of through passengers carried, earning revenue,					
2. Number of local passengers carried, earning revenue,					
3. Total number of passengers carried, earning revenue,					
4. Number of passengers carried one mile,					
5. Average distance carried,					
6. Average amount received from each passenger,					
7. Average receipts per mile for through passengers,					
8. Average receipts per mile for local passengers,					
9. Average receipts per passenger per mile for all passengers,					
10. Estimated cost of carrying each passenger one mile,					

All in Michigan

*PASSENGER TRAFFIC.—In State of Michigan.

	NUMBERS.	MILES.		RATE. Dollars. Cts	
1. Number of through passengers carried, earning revenue,					
2. Number of local passengers carried, earning revenue,					
3. Total number of passengers carried, earning revenue,					
4. Number of passengers carried one mile,					
5. Average distance carried,					
6. Average amount received from each passenger,					33
7. Average receipts per mile for through passengers,					033
8. Average receipts per mile for local passengers,					133
9. Average receipts for passenger per mile for all passengers,					033
10. Estimated cost of carrying each passenger one mile,					

13951
13951
140256

10

No account

*This information must always be given.

MILEAGE, TRAFFIC, ETC.—Continued.

FREIGHT TRAFFIC.—Entire Lines.

	TONS.	MILES.	RATE. Dollars. Cts.	
1. Number of tons of through freight carried, earning revenue,				
2. Number of tons of local freight carried, earning revenue,				
3. Total tons of freight carried, earning revenue,				
4. Total mileage of through freight,				
5. Total mileage of local freight,				
6. Total freight mileage or tons carried one mile,				
7. Average ton haul for through freight,				
8. Average ton haul for local freight,				
9. Average ton haul for all freight,				
10. Average amount received for each ton haul,				
11. Average receipts ton per mile, for through freight,				
12. Average receipts ton per mile, for local freight,				
13. Average receipts ton per mile, for all freight,				
14. Estimated cost of carrying one ton one mile,				

All in Michigan

*FREIGHT TRAFFIC.—In State of Michigan.

	TONS.	MILES.	RATE. Dollars. Cts.	
1. Number of tons of through freight carried, earning revenue,	32749			
2. Number of tons of local freight carried, earning revenue,	15891			
3. Total tons of freight carried, earning revenue,	48640			
4. Total mileage of through freight,		6898.38		
5. Total mileage of local freight,		893.50		
6. Total freight mileage or tons carried one mile,		7771.88		
7. Average ton haul for through freight,		21		
8. Average ton haul for local freight,		55		
9. Average ton haul for all freight,		16		
10. Average amount received for each ton haul,				3544
11. Average receipts ton per mile, for through freight,				1013
12. Average receipts ton per mile, for local freight,				1091
13. Average receipts ton per mile, for all freight,				1022
14. Estimated cost of carrying one ton one mile,				<i>No account</i>

*This information must always be given.

FREIGHT TRAFFIC MOVEMENT.—Entire Line.

[COMPANY'S MATERIAL EXCLUDED]

COMMODITY.		FREIGHT ORIGINATING ON THIS ROAD. WHOLE TONS.	FREIGHT RECEIVED FROM CONNECTING ROADS AND OTHER CARRIERS WHOLE TONS.	TOTAL FREIGHT TONNAGE.	
				WHOLE TONS.	PER CENT.
Products of agriculture,	Grain,				
	Flour,				
	Other mill products,				
	Hay,				
	Tobacco,				
	Cotton,				
	Fruit and vegetables,				
	Potatoes,				
	Total,				
Products of animals.	Live stock,				
	Dressed meats,				
	Other packing house products,				
	Poultry, game and fish,				
	Wool,				
	Hides and leather,				
	Total,				
Products of mines.	Anthracite coal,				
	Bituminous coal,				
	Coke,				
	Ores,				
	Stone, sand and other like articles,				
	Salt,				
	Total,				
Products of forest.	Lumber,				
	Logs,				
	Shingles,				
	Total,				
Manufactures.	Petroleum and other oils,				
	Sugar,				
	Naval stores,				
	Iron, pig and bloom,				
	Iron and steel rails,				
	Other castings and machinery,				
	Bar and sheet metal,				
	Cement, brick and lime,				
	Agricultural implements,				
	Wagons, carriages, tools, etc.,				
Wines, liquors and beers,					
Household goods and furniture,					
	Total,				
Merchandise,					
Miscellaneous: Other commodities not mentioned above,					
	Total Tonnage,				

all in

Michigan

*FREIGHT TRAFFIC MOVEMENT.—In State of Michigan.

(COMPANY'S MATERIAL EXCLUDED.)

COMMODITY.		FREIGHT ORIGINATING ON THIS ROAD. WHOLE TONS.	FREIGHT RECEIVED FROM CONNECTING ROADS AND OTHER CARRIERS WHOLE TONS.	TOTAL FREIGHT TONNAGE.	
				WHOLE TONS.	PER CENT.
Products of agriculture,	Grain,	18	12	30	05
	Flour,				
	Other mill products,				
	Hay,	30		30	05
	Tobacco,				
	Cotton,				
Fruit and vegetables,			22	22	04
	Potatoes,		12	12	02
	Total,	48	46	94	16
Products of animals.	Live stock,				
	Dressed meats,				
	Other packing house products,				
	Poultry, game and fish,				
	Wool,				
Hides and leather,		20		20	04
	Total,	20		20	04
Products of mines.	Anthracite coal,	169	18	187	37
	Bituminous coal,	1099		1099	226
	Coke,				
	Ores,		2334	2334	500
	Stone, sand and other like articles,	1746	400	2146	441
	Salt, Bark	569		569	115
	Total,	3583	2752	6335	1319
Products of forest.	Wood	1080	17324	18404	3780
	Lumber,	996	1058	2054	424
	Logs,	640	397	937	193
	Poles	805	60	865	103
	Shingles,				
	Total,	3521	18755	22276	4578
Manufac- tures.	Petroleum and other oils,				
	Sugar,				
	Naval stores,				
	Iron, pig and bloom,	5328	1000	6328	1302
	Iron and steel rails,	61	50	111	23
	Other castings and machinery,	504	361	865	175
	Bar and sheet metal,				
	Cement, brick and lime,	2082	8924	11006	2260
	Agricultural implements,				
	Wagons, carriages, tools, etc.,	31		31	06
	Wines, liquors and beers,				
Household goods and furniture,		20	20	04	
	Total,	8006	10355	18361	3770
Merchandise,	693	839	1532	313	
Miscellaneous: Other commodities not mentioned above,					
	TOTAL TONNAGE,	15671	32749	48618	10000

*This information must always be given.

ADDITIONAL QUESTIONS.

EXPRESS COMPANIES.

1. What express companies run on your road, and on what terms and what conditions as to rates, etc.; what kind of business is done by them, and do you take their freights at the depot, or at the office of such express companies?

American Express Company. We receive compensation based on pounds carried. They do a general Express business. We take freight at Depots.

TELEGRAPH.

2. Number of miles of telegraph on your road, and to whom does it belong?

23 miles owned by this Company (M.A.S.E.R.)

TRANSPORTATION COMPANIES.

*Co-operative Freight Lines are not to be reported.
Sleeping, Drawing-Room, and Palace Car Companies.*

3. What sleeping, drawing-room, chair or other palace passenger cars, not the exclusive property of your own or some other railroad company, have, during the year, been in use on your road in the State of Michigan, and on what terms? If rented by you, or allowed mileage between local points in this State, what was the amount paid for the use of such cars during the period under report?

NAME OF COMPANY.	GENERAL OFFICE.	AMOUNT PAID.
<i>None</i>		

*This information must always be given.

ADDITIONAL QUESTIONS.—Continued.

Fast Freight Lines.

5. To what fast freight lines, or other transportation companies, running cars upon your road, not the exclusive property of any railroad company paying taxes in this State, upon its gross receipts, have you paid car mileage or car rentals for the use of each cars, while in use for traffic between local points in this State, and what was the amount of such car rental or mileage paid?

NAME OF COMPANY.	GENERAL OFFICE.	AMOUNT PAID.
<i>None</i>		

*REPORTS OF ACCIDENTS FOR MICHIGAN DURING THE YEAR 190...

KILLED.

DATE.	NAME AND OCCUPATION.	PLACE.	CAUSE AND RESPONSIBILITY FOR ACCIDENT.
	<i>None</i>		

*In giving "cause and responsibility for accidents," details are not required. Simply say, "fell from train," "caught foot in frog," "highway collision," "coupling," "trespasser," or as the case may be, and add "purely accidental," "from lack of caution," or "carelessness," as the facts were. In case of inquest, report company responsible or not according to verdict.

TABULAR STATEMENT OF ACCIDENTS IN MICHIGAN.

CAUSE OF ACCIDENT.	KILLED.			INJURED.		
	PASSENGERS.	EMPLOYES.	OTHERS.	PASSENGERS.	EMPLOYES.	OTHERS.
Collisions,						
Coupling cars,						
Derailments,						
Falling from trains,						
Frogs,						
Getting on and off trains,						
Highway crossings,						
Miscellaneous,						
Overhead obstructions,						
Trespassers on trains,						
Trespassers on tracks,						
TOTAL,						

None

SUMMARY OF ACCIDENTS IN MICHIGAN.

- Number of persons killed during the year,
- Number of persons injured during the year,
- Number of casualties purely accidental,
- Number resulting from lack of caution, carelessness, or misconduct,
- Persons killed or injured while intoxicated,
- Trespassers or tramps killed or injured,
- Suicides,

None

CLASSIFICATION OF EMPLOYES.

KILLED OR INJURED IN MICHIGAN.

	KILLED.	INJURED.	TOTAL.
Baggagemen,			
Brakemen,			
Conductors,			
Engineers,			
Firemen,			
Laborers,			
Shopmen,			
Yardmen,			
Not classified above,			
TOTAL,			

None

State of Michigan,

COUNTY OF Marquette

} ss.

A. R. Harris General Manager & A. A. St John Auditor

OF THE

Marquette & Southeastern Railway Company,

being duly sworn, depose and say that they have caused the foregoing statements to be prepared by the proper officers and agents of this company, and having carefully examined the same, declare them to be a true, full and correct statement of the condition and affairs of said company, on the thirty-first day of December, A. D. 1902, to the best of their knowledge and belief.

Signed,

A. R. Harris
A. A. St John



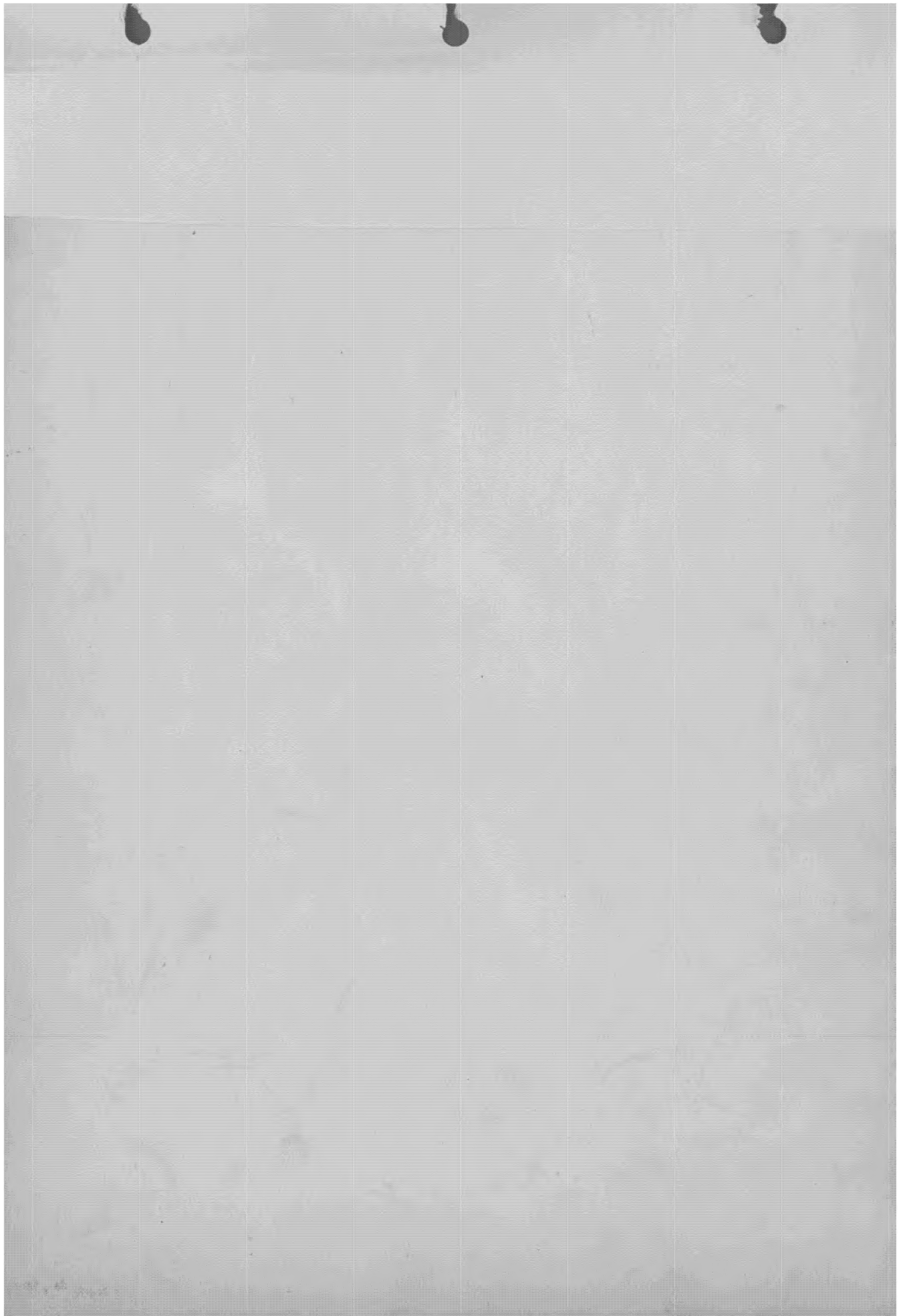
Subscribed and sworn to before me this 23rd day of March A. D. 1903.

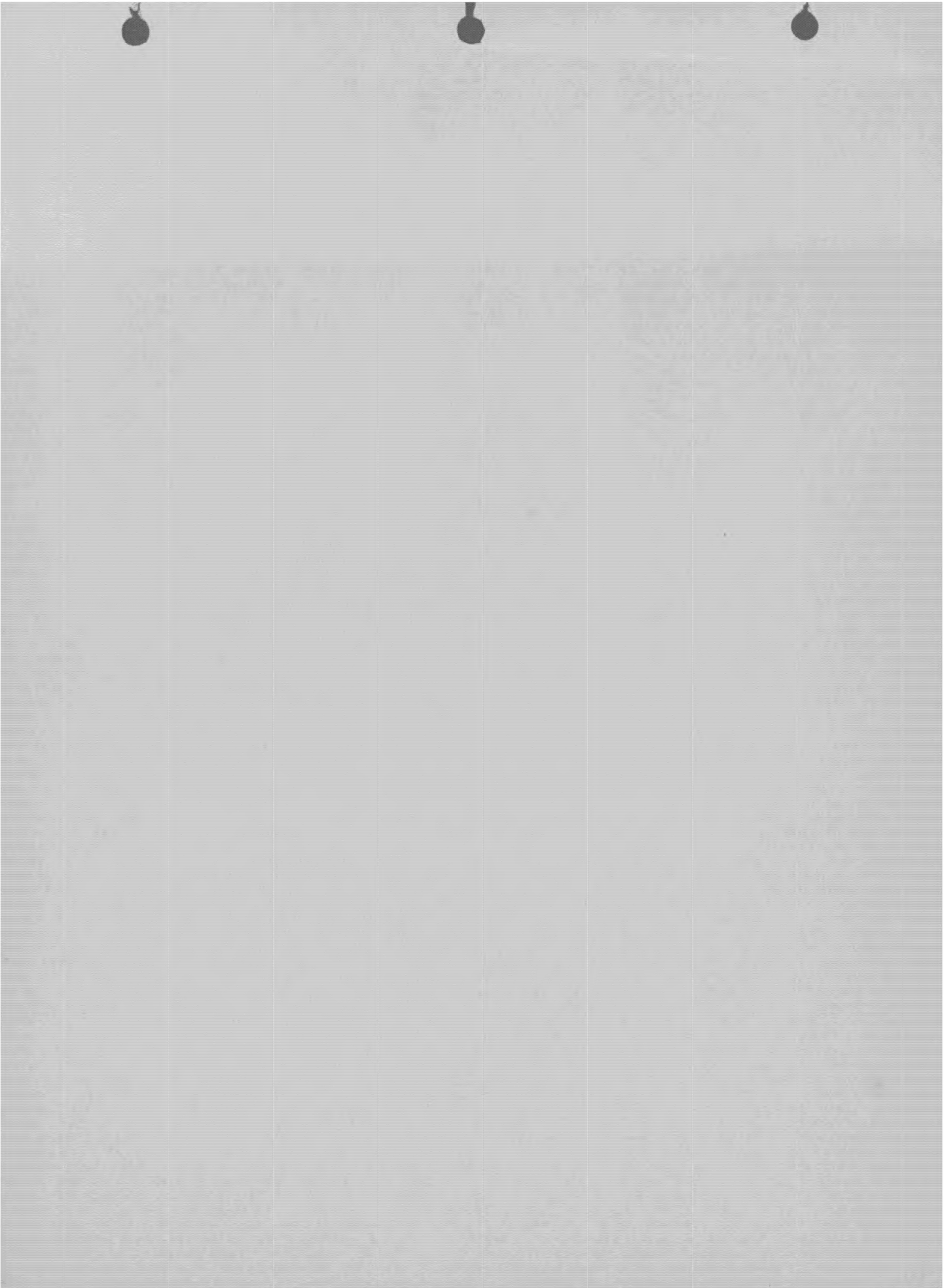
F. Stuart Byrnes
Notary Public

Received and filed in the office of the Commissioner of Railroads, this.....
day of.....1903.

.....
Commissioner of Railroads.







DO NOT FOLD OR ROLL THIS BOOK.

ANNUAL REPORT

OF THE

Lake Superior and Ishpeming

RAIL *Way* COMPANY

TO THE

COMMISSIONER OF RAILROADS

FOR THE

STATE OF MICHIGAN



1902

LANSING
ROBERT SMITH PRINTING CO., STATE PRINTERS AND BINDERS
1902

20

Group 3.
STATISTICAL RETURNS

OF THE

Operations, Earnings, and Financial Condition

Lake Superior & Ishpeming OF THE R.R.

FOR THE YEAR ENDING, *December 31 1902*

FOR

POOR'S MANUAL

OF THE

RAILROADS OF THE UNITED STATES

FOR 1903

THE INFORMATION CONTAINED WITHIN IS FURNISHED BY

(To be signed by officer furnishing information).

Lake Superior & Ishpeming R. R. CO.

PROOF OF STATEMENT, WHEN IN TYPE, TO BE FORWARDED,
FOR REVISION, TO

(Please give name, title and address of officer to whom proof should be sent).

POOR'S MANUAL OF RAILROADS.

68 WILLIAM STREET,

No. 44 Broad Street,

NEW YORK CITY

ORGANIZATION AND HISTORY.

Date of Charter of existing Company,

Sept 17th 1895


Date of Opening of first portion of road,

Aug 12th 1896

Dates at which each subsequent portion was opened.

ROLLING STOCK, at close of fiscal year,

	OWNED.	CAR TRUSTS.	LEASED.	TOTAL IN USE.
Locomotive Engines, . . .	<i>14</i>	✓	✓	<i>14</i>
Passenger Cars,	<i>4</i>	✓	✓	<i>4</i>
Baggage, Mail, and Express Cars,				
Freight Cars—Box,				
“ “ —Stock,				
“ “ —Flat,	<i>20</i>	✓	✓	<i>20</i>
“ “ —Coal,	<i>490</i>	✓	✓	<i>490</i>
<i>Caboose</i>	<i>4</i>	✓	✓	<i>4</i>
Total Cars (producing revenue)	<i>518</i>	✓	✓	<i>518</i>
Service Cars,				

 If your company owns any rolling stock which it leases to other companies, or owns floating equipment such as transfer ferryboats, etc ; or, has added to its equipment, as given above, since the close of the fiscal year, please give particulars thereof.

TRAFFIC OPERATIONS, Year Ending, Dec 31 1907

Train Mileage.

Passenger Train	. . .	<u>117 ✓ 4</u>
Freight	" . . .	<u>6999 8</u>
Mixed	" . . .	<u>✓</u>
All Other	" . . .	<u>✓</u>
Total Miles run by all Trains.	. . .	<u>817 ✓ 2</u>

Passenger and Freight Traffic.

No. Passengers carried,	<u>7154</u>
" " " 1 mile,	<u>114394</u>
Tons Freight moved,	<u>1698867</u>
" " " 1 mile,	<u>35673743</u>

EARNINGS, EXPENSES, etc., Year Ending, Dec 31 1907

Earnings from Traffic.

Passengers, . . . \$	<u>1695.10</u>
Freight, . . .	<u>183890.05</u>
Mail and Express,	<u>999.34</u>
Other (A), . . .	<u>✓</u>
Total,	<u>\$186,584.49</u>
Net Earnings from traffic,	<u>43940.59</u>

Operating Expenses.

Maint. Way & Bldgs, \$	<u>34075.95</u>
" Equip.,	<u>31977.49</u>
Transportation, . . .	<u>65186.76</u>
General Expenses,	<u>11403.70</u>
Total,	<u>\$142643.90</u>

Add Other Receipts.

Interest and Dividends, . . . \$	<u>✓</u>
Rentals Leased Roads (B),	<u>✓</u>
Other Receipts (C), . . .	<u>18725.79</u>
Total, . . . \$	<u>62,666.37</u>

Payments.

Interest on Bonds (D), . . . \$	<u>✓</u>
" Floating Debt,	<u>✓</u>
Rentals Leased Lines (E),	<u>✓</u>
Taxes,	<u>19270.40</u>
Dividends on Stock, (p.c.)	<u>✓</u>
Other Payments (F), . . .	<u>✓</u>
Total, . . . \$	<u>19270.40</u>

Balance (Surplus or Deficit), \$	<u>43395.97</u>
Surplus or Deficit from last year,	<u>189328.13</u>
Additions (or Deductions) during the year (G),	<u>✓</u>
Surplus or Deficit as per Balance Sheet (see pages 5 and 6),	<u>232724.10</u>

- A. To include ONLY miscellaneous TRAFFIC EARNINGS.
- B. Please give details.
- C. Please give details.
- D. Please give details.
- E. Please give details.
- F. Please give details.
- G. Please give details.

Operations, year ending Dec. 31, 1907.—Trains run (passenger, 9,859; freight, 62,018), 72,777 miles. Passengers carried, 7,550; carried one mile, 136,874. Tons freight moved, 1,610,560; ton-miles, 33,790,145. Earnings (passenger, \$1,858; freight, \$174,022; other, \$395), \$176,345. Operating expenses, \$109,882. Net earnings, \$66,463; other receipts, \$9,818—total, \$76,281. Less: taxes, \$13,377. Surplus, \$62,904; surplus forward, \$126,424 total, \$189,328.

MISCELLANEOUS.

	AUTHORIZED.	SUBSCRIBED.	PAID IN.	PAR VALUE PER SHARE
Capital Stock: { Common. }	1,000,000 ⁰⁰	1,000,000.00	1,000,000.00	100 ⁰⁰
{ Preferred. }				

Dividends, when payable,

Dividends, where payable,

Interest, " "

Whole number of dividends paid to date, None; periods at which same were paid each year, (Quarterly, Semi-Annually, or Annually.)

State nature of preference of preferred stock

State how long stock must be owned to entitle holder to vote _____

State whether voting power is attached to any issues of bonds _____

State whether any bonds may be converted into common or preferred stock and terms under which such conversion may be made _____

State whether common or preferred stock may be converted into any issue of bonds and terms under which such conversion may be made _____

Time of holding annual meeting, 2nd Tuesday in Feb

Place of holding annual meeting, Lansing, Mich

Stock Transfer Books close—prior to dividend payments, _____

" " " " " " annual meeting, _____

Trustees of Bonds _____

Registrar of Stock _____

Amount of Stock and Bonds listed on various exchanges, _____ (Please give details.)

GENERAL BALANCE SHEET of *Lake Superior and Ishpeming* ⁶ *Rail Way* Dec. 31st 1902

Cost of Road,	\$ 2036532.81	Common Stock paid in, } See page 4, { \$ 1,000,000.00
Cost of Equipment,	371840.14	Preferred Stock paid in, } ✓
Stocks and Bonds of other Companies,	✓	Funded Debt Outstanding (see below),
Other Permanent Investments,	✓	Real Estate Mortgages,
(Please give details.)		Current Liabilities, <i>Bills Payable</i>
Materials and Supplies on Hand,	19963.35	Accrued Liabilities—Interest,
Cash on Hand,	10040.64	Taxes,
Bills Receivable,	✓	Rentals,
Current Accounts and Balances,	152882.77	Other Liabilities,
Other Assets,		(Please give details.)
(Please give details.)		Profit and Loss (see page 3)
Profit and Loss (see page 3),		
TOTAL,	\$ 2,591,259.71	TOTAL,
		\$ 2,591,259.71

CHARACTER AND DESCRIPTION OF BONDS.	DATE OF ISSUE.	INTEREST.		PRINCIPAL WHEN DUE.	AMOUNT AUTHORIZED.	AMOUNT OUTSTANDING.	NAMES OF TRUSTEES.	COUPON OR REGISTERED.	DENOMINATION (\$100, \$500, or \$1000.)
		RATE.	WHEN PAYABLE.						
<i>1st</i> <i>Sold Bonds</i>	<i>Jan 1 1906</i>	<i>6 1/2%</i>	<i>Jan 1 1906 & Dec 31</i>	<i>Jan 1 1906</i>	<i>1,000,000.00</i>	<i>500,000.00</i>			<i>\$ 100⁰⁰</i>
			&						
			&						
			&						
			&						

If since the date of above balance sheet there have been issued any new bonds or stock; or any bonds of other companies have been assumed; or any bonds included above have been retired, please give full particulars of such issues and the purposes for which they were made.

General Balance Sheet, Dec. 31, 1901.—Capital stock (\$100 shares) paid in, \$1,000,000; funded debt (1st gold 6s of Jan. 1, 1906), \$690,000; bills payable, \$143,750; current liabilities, \$7,133; taxes accrued, not due, \$5,786; other liabilities, \$420,423; profit and loss, \$189,338—total, \$2,457,430. Contra: Cost of road and equipment, \$2,408,373; materials, etc., \$19,974; cash and current assets, \$29,073—total, \$2,457,430.

BOARD OF DIRECTORS, Elected ⁷ 10th of February 1903.

	NAME.	ADDRESS.
	Wm G Mather	Cleveland, Ohio
2	Jas. Laughlin, Jr.	Pittsburgh, Pa.
3	Wm. G. Pollock	Cleveland, Ohio
4	B. F. Jones, Jr.	Pittsburgh, Pa.
5	J. H. Wade	New York, N. Y.
6	Jas. H. Hoyt	Cleveland, Ohio
7	H. R. Harris	Marquette, Mich.
8		
9		
10		
11		

Directors (elected Feb. 12, 1902).—Jas. Laughlin, Jr., B. F. Jones, Jr., Pittsburgh, Pa.; Wm. G. Pollock, J. H. Hoyt, Wm. G. Mather, Cleveland, O.; J. H. Wade, New York, N. Y.; Geo. Hayden, Ishpeming, Mich. OFFICERS: WM. G. MATHER, Pres., Cleveland, O.; Jas. Laughlin, Jr., Vice-Pres., Pittsburgh, Pa.; W. G. Pollock, Treas.; J. H. Hoyt, Sec., Cleveland, O.; H. R. Harris, Gen. Mgr., Marquette, Mich. GENERAL OFFICE, Marquette, Mich.

If since last election there has been any change in the Board of Directors as then elected, please send particulars.

OFFICERS.

TITLE.	NAME.	ADDRESS.
President,	Wm G Mather	Cleveland, Ohio
Vice-President,	Jas Laughlin Jr	Pittsburgh, Pa.
Gen. Manager Vice-President,	H. R. Harris	Marquette, Mich.
Treasurer,	Wm G Pollock	Cleveland, Ohio
Secretary,	J. H. Hoyt	

Location of Principal Office Marquette, Mich.

Location of Stock Transfer Office

ANNUAL REPORT

OF THE

Lake Superior and Ishpeming

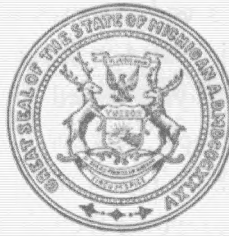
RAILWAY COMPANY

TO THE

COMMISSIONER OF RAILROADS

FOR THE

STATE OF MICHIGAN



1902

LANSING
ROBERT SMITH PRINTING CO., STATE PRINTERS AND BINDERS
1903

ANNUAL REPORT

OF THE

Lake Superior and Ishpeming

RAIL *Way* COMPANY

TO THE

COMMISSIONER OF RAILROADS

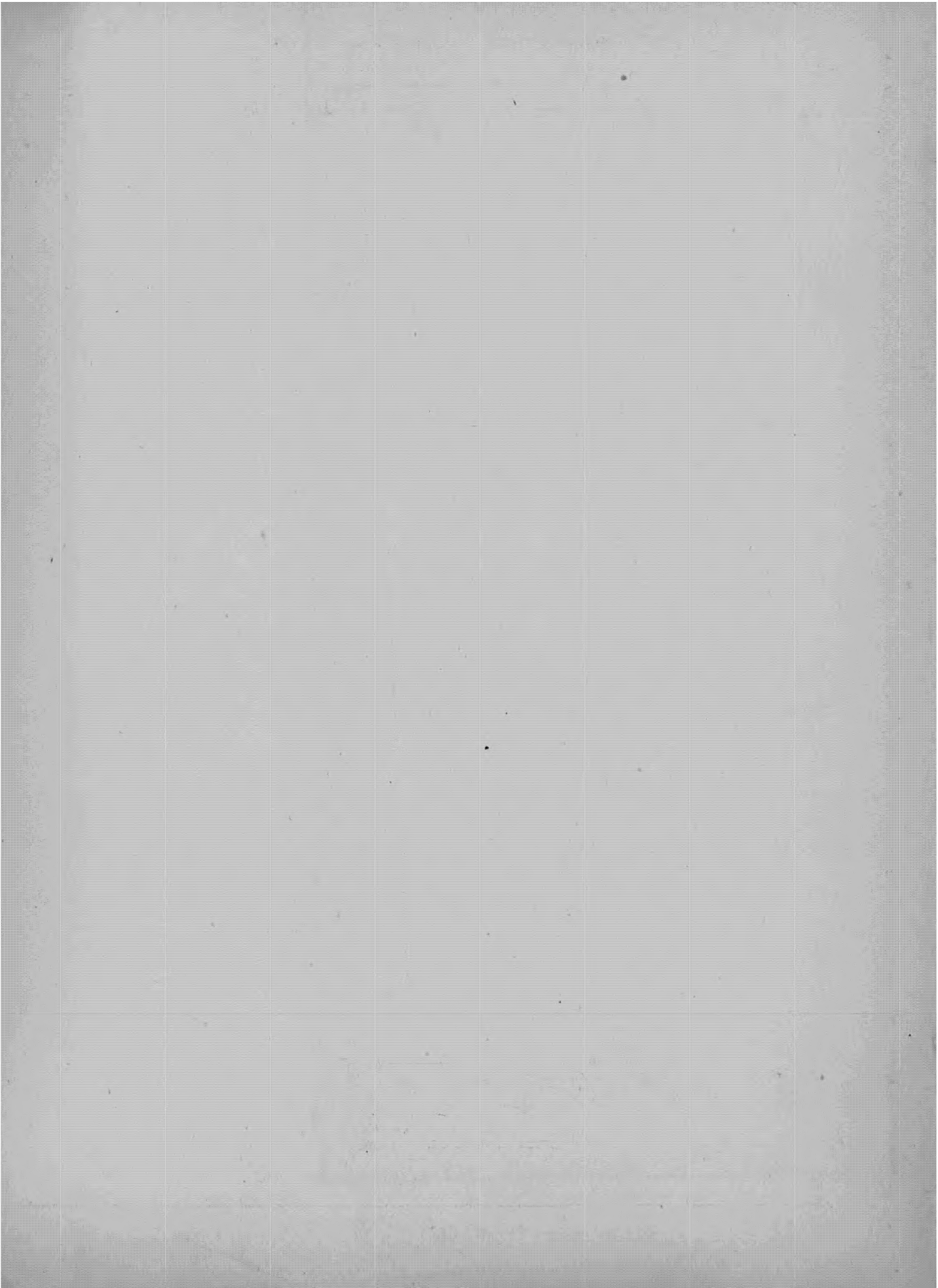
FOR THE

STATE OF MICHIGAN



1902

LANSING
ROBERT SMITH PRINTING CO., STATE PRINTERS AND BINDERS
1903



Important Circular—Please Read.

OFFICE OF THE COMMISSIONER OF RAILROADS, }
Lansing, Mich., January 1, 1903. }

To Auditing and Accounting Officers Reporting to the Commissioner of Railroads for the State of Michigan:

Following are the blanks upon which you will please make up your returns to this office as required by law for the fiscal year ending December 31, 1902.

The forms now sent do not vary materially from those transmitted last year, and include no interrogatories not essential to a proper understanding at this department of the business and condition of your company during the year for which the report is made.

In the preparation of your report be careful to observe the following particulars:

- 1st. Answer all interrogatories in full as the same imply, and do not in any case refer to replies given in former years.
- 2d. Carefully make all computations and footings as intended by the blanks, so that they may be checked at this office.
- 3d. Be careful not to include earnings and expenses of your leased or proprietary roads with those of your main line, in the statements intended to show each separately.
- 4th. In case of the corporate reports of your leased or proprietary roads you *must* have them verified by the officers of the corporation proper, *and not by those of the lessee company*. This is requirement of law, and unless complied with the report will not be accepted at this office.
- 5th. Prepare the reports in triplicate, sending the original and duplicate to this office on or before the first of April next.

Very truly yours,

THERON W. ATWOOD,

Commissioner of Railroads.

OFFICERS OF THE COMPANY, WITH LOCATION OF OFFICES.

OFFICIAL POSITION.	NAME.	LOCATION OF OFFICE.
President.	Wm J. Mather	Cleveland Ohio
Vice-President,	Geo Laughlin Jr	Pittsburgh Pa
Secretary.	J.H. Hough	Cleveland Ohio
Auditor,	St. A. John	Marquette Mich
Treasurer.	W. J. Pollock	Cleveland Ohio
General Manager.	St. R. Starnes	Marquette Mich
General Superintendent,		
Assistant General Superintendent,		
Division Superintendents,		
Chief Engineer,	Mantop Kay J. J. Derming	Marquette Mich
Superintendent of Telegraph,		
Cashier,		
General Passenger Agent,		
General Freight Agent,		
Attorney,		
Receiver,		

Give name and address of officer to whom correspondence regarding this report should be addressed,

NAME *St. A. John* TITLE *Auditor* ADDRESS *Marquette Mich*

DIRECTORS.

NAME.	POSTOFFICE ADDRESS.	TERM EXPIRES.
Wm B Mather	Cleveland Ohio	Feb'y 9th. 1904
Geo Laughlin Jr.	Pittsburgh Pa	" " "
Wm G Balloch	Cleveland Ohio	" " "
B J Jones Jr	Pittsburgh Pa	" " "
J H Wade	New York N.Y.	" " "
Geo H Stout	Cleveland Ohio	" " "
J R Starry	Marquette Mich.	" " "

STOCKHOLDERS, STOCK AND GENERAL OFFICES.

Dated Feby 17th 1893 Amendment dated Sept 12th 1896

1. When chartered or articles of association filed,

Feby 24th 1893

2. Number of stockholders at date of last election,

10

3. Number of stockholders in Michigan at same time,

2

4. Amount of full paid stock held in Michigan at same date,

\$ 12,5100⁰⁰

5. Date of annual meeting of stockholders,

2nd Tuesday in February

6. Fiscal year of company ends,

Dec 31st

7. General offices of the company are located at

Marquette Michigan

REMARKS.

REPORT

of the *Lake Superior and Shpeming* Rail way Company,
 FOR THE YEAR ENDING DECEMBER 31, 190*2*

GENERAL EXHIBIT.	DEBIT.		CREDIT.	
1. Total earnings from operation,				20148902
2. Total expenses, including taxes,		16191430		
3. Net income or deficit,				3957272
4. Interest on funded debt,				
5. Interest on unfunded debt,				
6. Rentals of buildings, tracks, etc.,				
7. Rentals of engines and cars,				
8. Balance applicable to dividends,				3957272
9. Dividends declared (per cent),				
10. Balance for the year,				
11. Balance (profit and loss) last year,				18932813
12. *Items not included in above, as follows,				
<i>Interest and Discount</i>				382325
13. Balance forward to next year,				23272410

ANALYSIS OF CAPITAL STOCK.

1. Amount authorized by charter or articles of associat'n,				1000000000
2. Par value of shares,			10000	
3. Number of shares issued,	10000			
4. Amount paid in on common,				1000000000
5. Amount paid in on preferred,				
6. Amount paid in on shares not issued, (number),				
7. Total amount paid in, as per books of the Company,				1000000000
8. Paid in per mile of road owned by company,—Miles,	21.01			4769638

*This answer should include as debits all disbursements for outlays not included in foregoing items, fixed charges, or operating expenses proper, also, as credits, receipts for other than earnings made from the operating of the road, or otherwise connected with the property, such as interest on securities, dividends on stock held by company, etc., etc., not taxable income.

ANALYSIS OF DEBT ACCOUNTS.

1. FUNDED DEBT.

CLASS, CHARACTER AND DATE OF ISSUE.	RATE OF INTEREST.	WHEN DUE.	WHERE PAYABLE.	AMOUNT OUTSTANDING.
<i>Suez Bonds Jan 1st 1896</i>	<i>6%</i>	<i>Jan 1st 1926</i>	<i>New York City</i>	<i>500 000 00</i>
Total funded debt,				\$ <i>500 000 00</i>

2. UNFUNDED DEBT.

FOR WHAT INCURRED?	IS THE SAME TO BE FUNDED OR HOW LIQUIDATED.	AMOUNT.
For construction,	<i>Paid in Cash</i>	
For equipment,		
For real estate,		
For renewals,		
For miscellaneous,		
For current balances,		<i>143750 00</i>
		<i>71478561</i>
Total unfunded debt,		\$ <i>85853561</i>

3. RECAPITULATION.

Total funded debt,		<i>500 000 00</i>
Total unfunded debt,		<i>858 535 61</i>
Total debt liabilities,		\$ <i>1358 535 61</i>
Amount of debt liabilities per mile of road [<i>21.01</i> miles],		<i>64661 38</i>
Total amount of stock and debt,		<i>7368 535 61</i>
Stock and debt per mile of road [<i>21.01</i> miles],		<i>11225776</i>

GENERAL BALANCE SHEET.—Dr.

1. Construction account, <i>Lake Superior & Ishpeming Ry Co</i>	74513158	
2. Equipment account, <i>United Rock Company</i>	29140123	103653281
3. Other investments (specifying same.)	35084014	37184014
<i>Right of Way Terminal</i>	21000000	
<i>Leads, Contracts and Labor</i>		100000000
<hr/>		
4. CASH ITEMS:		
Cash,	1004064	
Bills receivable,		
Due from agents,	19047	
	<hr/>	1023111
5. OTHER ASSETS:		
Material and supplies,	1996335	
Sinking funds,		
*Debit balances from companies and individuals,	15269230	
		17265865
<hr/>		
6. Total,		\$ 209175971

*Give the aggregate of the Debit Balances and do not deduct your own liabilities from the amount of the item.

GENERAL BALANCE SHEET.—Cr.

1. Capital stock,					100000000
2. Funded debt,					50000000
3. UNFUNDED DEBT:*					
Interest unpaid,					
Dividends unpaid,					
Notes payable,				14375000	
Vouchers and accounts,				695621 01	
Other liabilities (list as follows):					
<i>Taxes Suspense</i>				1916460	
					85853561
4. Profit and loss or income accounts,					7327210
5. Total,					759126971

*Give the total of these items, so that the total Unfunded Debt will correspond with the footing of the Unfunded Debt at page 7.

COST OF ROAD AND EQUIPMENT.

When in case of road purchased or leased, the original cost for construction and equipment cannot be given by the present owners or lessees, statement below, numbered 2, may be filled up instead of one.

1. TOTAL COST FOR CONSTRUCTION AND EQUIPMENT OF ROAD AND BRANCHES BUILT BY COMPANY.

1. Total expended for construction and equipment,	<i>Lake Superior & Ishpeming Co. \$1,095,971.72</i>	} \$	140837295
2. Average cost per mile of road (not including sidings) [21.01 miles],	<i>United Rock Company 312,401.23</i>		
3. Proportion of cost for Michigan.*	<i>all</i>		

2. PURCHASED BY PRESENT COMPANY.

1. When purchased.
2. Original cost to present company, of road and equipment,
3. Amount expended since purchase, account of construction,
4. Amount expended since purchase, account of equipment,
5. Total cost to date of report,
6. Average cost per mile of road (not including sidings) [miles],
7. Proportion of cost for Michigan.*

None

*Unless some very good reason exists to the contrary, this proportion will be for the miles of road in this State compared with the whole. If made on a different basis, please state the reasons therefor.

***CHARGES AND CREDITS TO PROPERTY DURING THE YEAR.**

11

	EXTENSIONS AND NEW SIDINGS.	2D TRACK.	NEW BUILDINGS.	NEW FENCES.	MACHINERY AND TOOLS.	NEW LOCOMOTIVES.	NEW CARS.	TOTAL.
Main line, BRANCHES,								
LEASED OR PROPRIETARY ROADS,								
			<i>none</i>					
Total charges,	\$							

Total charges to property account as above, \$

Property sold and credited, - - - \$

Net addition to property account, - \$

*The charges under this head should be included in the total cost as before stated, under the proper caption. The amounts here given being only for expenditures made during the year.

*ANALYSIS OF

1. PASSENGER.

	LOCAL FARES.	THROUGH FARES.	TOTAL PASSENGER FARES.	EXPRESS AND BAGGAGE.
Main line and branches, LEASED OR PROPRIETARY ROADS.—(Enter each separately.)				
Total passenger department earnings,				

2. FREIGHT.

	LOCAL TRAFFIC.	THROUGH TRAFFIC.
Main line and branches, LEASED OR PROPRIETARY ROADS.—(Enter each separately.)		
Total freight department earnings,		

*When the Road is wholly within the State of Michigan this need not be filled out but the Analysis of Earnings in Michigan on pages 14 and 15 must always be given.

*ANALYSIS OF

1. PASSENGER.

	LOCAL FARES.	THROUGH FARES.	TOTAL PASSENGER FARES.	EXPRESS AND BAGGAGE.
Main line and branches, LEASED OR PROPRIETARY ROADS.—(Enter each separately.)	28252	141258	169510	99934
Total passenger department earnings,	28252	141258	169510	99934

2. FREIGHT.

	LOCAL TRAFFIC.	THROUGH TRAFFIC.
Main line and branches, LEASED OR PROPRIETARY ROADS.—(Enter each separately.)	2204358	16184647
Total freight department earnings,	2204358	16184647

*This information must always be given.

EARNINGS.—In State of Michigan.

EARNINGS.

MAILS.	OTHER SOURCES.	TOTAL.	PER TRAIN MILE.	PER MILE OF ROAD.
<i>Nil</i>	<i>Nil</i>	<i>269444</i>	<i>23</i>	<i>12287</i>
<i>Nil</i>	<i>Nil</i>	<i>269444</i>	<i>23</i>	<i>12287</i>

EARNINGS.

TOTAL TRAFFIC.	OTHER SOURCES, FREIGHT DEPARTM'T.	TOTAL.	PER TRAIN MILE.	PER MILE OF ROAD.
<i>183890 05</i>	<i>Nil</i>	<i>183890 05</i>	<i>263</i>	<i>838532</i>
<i>183890 05</i>	<i>Nil</i>	<i>183890 05</i>	<i>263</i>	<i>838532</i>

196584 49

ANALYSIS OF EARNINGS.—Continued.

1. Total transportation earnings, entire line,			18658449
2. Transportation earnings per mile of road,			850818
3. Transportation earnings per train mile,			228
4. Miscellaneous receipts from operating account, other than for transportation, as follows:*			
From car mileage,			
From switching charges,			
From telegraph companies,			
From rents of tracks, yards and terminals,	500000		
From rents not otherwise provided for,	990253		
From other sources,			
	<i>Total,</i>	\$	1490253
5. Distribution of miscellaneous earnings between main line and leased or proprietary roads,			
COMPANY.	TOTAL MISCELLANEOUS.	PROPORTION FOR MICHIGAN.	
6. Total earnings from operation road,			20148902
7. Total earnings per mile of road,			918773
8. Total earnings per train mile,			247
9. Total taxable earning per mile of road in Michigan,	<i>all</i>		
10. Income other than from earnings,	<i>all</i>		
<i>Interest and Discount</i>			382326
11. <i>Total income from all sources,</i>		\$	20531027
12. Proportion of income for Michigan,			20531027

*This should include only such items as are not strictly transportation earnings, such as rents for joint use of tracks, station houses and other miscellaneous receipts connected with the property itself. Interest and dividends on stock, or securities held by the Company will be taken up in the General Exhibit, page 6, and given in answer to interrogatory 11 above.

ANALYSIS OF EXPENSES.

CLASS 1.—MAINTENANCE OF WAY AND STRUCTURES.

1. Repairs of roadway,	971370
2. Renewals of rails,	458863
3. Renewal of ties, <i>Removal snowice</i>	137848
4. Repairs and renewals of bridges and culverts,	133853
5. Repairs and renewals of fences, road crossings, signs and cattle guards,	40163
6. Repairs and renewals of buildings and fixtures,	1654981
7. Repairs and renewals of docks and wharves,	
8. Repairs and renewals of telegraph,	4664
9. Stationary and printing,	5353
10. Other expenses,	
Total,	\$ 3107593

CLASS 2—MAINTENANCE OF EQUIPMENT.

11. Superintendence,	181225
12. Repairs and renewals of locomotives,	1688662
13. Repairs and renewals of passenger cars,	11234
14. Repairs and renewals of freight cars,	984929
15. Repairs and renewals of work cars,	228822
16. Repairs and renewals of marine equipment,	
17. Repairs and renewals of shop machinery and tools,	68635
18. Stationery and printing,	20614
19. Other expenses,	13728
Total	\$ 3197749

CLASS 3—CONDUCTING TRANSPORTATION.

20. Superintendence,	1145698
21. Engine and roundhouse men,	2077258
22. Fuel for locomotives,	87651
23. Water supply for locomotives,	69321
24. Oil, tallow and waste for locomotives,	26785
25. Other supplies for locomotives,	473472
26. Train service,	75590
27. Train supplies and expenses,	765064
28. Switchmen, flagmen and watchmen,	347981
29. Telegraph expenses,	234486
30. Station service,	20686
31. Station supplies,	30225
32. Switching charges,	
33. Car mileage,	
34. Hire of equipment,	
35. Loss and damage,	2500
36. Injuries to persons,	6125
37. Clearing wrecks,	72793
38. Operating marine equipment,	
39. Advertising,	3951
40. Outside agencies,	
41. Commissions,	
42. Stock yards and elevators,	
43. Rents for tracks, yards and terminals,	987365
44. Rents for buildings and other property,	46638
45. Stationery and printing,	44637
46. Other expenses,	
Total	\$ 6518626

ANALYSIS OF EXPENSES.—Continued.

CLASS 4.—GENERAL EXPENSES.

47. Salaries of general officers,	631873
48. Salaries of clerks and attendants,	211678
49. General office expenses and supplies,	43698
50. Insurance,	102701
51. Law expenses;	84225
52. Stationary and printing (general offices),	42858
53. Other expenses,	23387
54. Taxes,	1927040
TOTAL,	\$ 3067460

RECAPITULATION OF EXPENSES.

	PER CENT OF EXPENSES.	
1. Maintenance of way and structures,	21.04	3407595
2. Maintenance of equipment,	19.75	3197749
3. Conducting transportation,	40.26	6518626
4. General expense, including taxes,	18.95	3067460
5. TOTAL OPERATING EXPENSES AND TAXES,	100.00	16191430
6. Operating expenses and taxes per mile of road,		738323
7. Operating expenses and taxes per train mile run, for trains, earning revenue [8172 miles],		198
PROPORTION OF OPERATING EXPENSES AND TAXES FOR MICHIGAN,		
8. Main line,		all
*LEASED OR PROPRIETARY ROADS.		
Total proportion of Expense for Michigan,	\$	16191430
9. Percentage of expenses to earnings [80 ³⁶],		
10. Net earnings per mile of road,		180450
11. Net earnings per train mile,		48

INSTRUCTIONS FOR ANSWERING QUESTIONS ON NEXT PAGE.

There shall appear on the next page *some notation* to indicate that the questions asked have not been overlooked. The word "None" may be used for a whole page; or under any column heading; or against any particular item or items, where that word expresses the *facts*. In other cases refer by note to *this page*, as for example, "See page 19," where a brief explanation should be given why specific data called for can not be returned *exactly as requested*.

In the column headed "Number," state the number of employees in each class as determined from the pay rolls on Dec. 31, 1902. It is not intended that laborers engaged in the construction of new line should be included among railway "Employees." Under "Total number of days worked" give the aggregate number of days worked by all the employees of each class named during the year covered by this report. Under "Total yearly compensation" give the aggregate compensation paid all the employees in each class named during the year covered by the report. To obtain "Average daily compensation," divide the "Total yearly compensation" of any class by the "Total number of days worked" by that class. It should be especially noted that "Number" of employees on Dec. 31, 1902, is not to be accepted as a basis for computing "Average daily compensation."

In returning "General Officers" state the total number on page 20, give below on this page (19) the number receiving no compensation, if there are any such, and compute the "Average daily compensation" for this class on the basis of those only receiving compensation. In case the "General Officers" and "General Office Clerks," returned in the financial report of a subsidiary road, are not in service the entire time during the year, there may be entered as "Total number of days worked" (provided no accurate record of such service has been kept) the number of days fairly representing the time devoted to the affairs of the company during the year.

Under the head of "Other Officers," give all officers not included among "General Officers" nor properly classed as "General Office Clerks."

Under "Distribution of Above," data should be given only against the four subheadings printed, and in making the distribution called for, if nothing is to be returned opposite any one or more of these subheadings, the same should be explained briefly, especially when figures are returned on pages 17 and 18 under the four corresponding subheadings of "Operating Expenses." The four items against each "Total" in the lower part of the table should *agree exactly* with similar entries opposite corresponding "Total" above; the same remark applies to data returned against "Less 'General Officers.'"

EXPLANATORY REMARKS.

Two General Officers receiving no compensation

EMPLOYEES AND SALARIES—STATE OF MICHIGAN.

CLASS.	NUMBER.	TOTAL NUMBER OF DAYS WORKED	TOTAL YEARLY COMPENSATION.	AVERAGE DAILY COM- PENSATION
General Officers,	7	1675	864596	516
Other Officers,	None			
General Office Clerks,	4	1245	235649	189
Train Dispatchers,	1	365	142500	390
Station Agents,	1	90	21000	233
Other Station Men,	4	1443	175322	121
Enginemen,	9	2122	694390	327
Firemen,	9	2075	440127	212
Conductors,	3	754	227660	302
Other Trainmen,	6	1373	314284	199
Machinsits,	4	1200	363677	330
Carpenters,	7	2004	423555	211
Other Shopmen,	36	10265	2173938	212
Section Foremen,	5	1825	303293	166
Other Trackmen,	20	4956	765682	154
Switchmen,	20	3670	967536	263
Flagmen and Watchmen,	3	633	59500	94
Telegraph Operators,	4	1014	174687	172
Employees—account Floating Equipment, All other Employees and Laborers,				
TOTAL (Including "General Officers")—MICHIGAN, Less "General Officers,"	143	36709	8347296	227
TOTAL (Excluding "General Officers")—MICHIGAN,	7	1675	864596	516
	136	35034	7482700	213
DISTRIBUTION OF ABOVE:				
General Expenses,	11	2920	1100145	376
Maintenance of way and Structures,	32	8985	1492530	173
Maintenance of Equipment,	28	8044	1812969	225
Conducting Transportation,	72	16960	3941652	231
TOTAL (Including "General Officers")—MICHIGAN, Less "General Officers,"	143	36709	8347296	227
TOTAL (Excluding "General Officers")—Michigan,	7	1675	864596	516
	136	35034	7482700	213
TOTAL (Including "General Officers")—ENTIRE LINE,	143	36709	8347296	227

DESCRIPTION OF ROAD.

1. *Date when the road was opened for use between its present termini:

FROM	To	DATE
Presque Isle	Schpeming	Aug 12th 1896

MAIN LINE,		Miles.	100ths.	Miles.	100ths.
In other States.	2. †In Michigan, from Presque Isle to Schpeming			1994	
	“ from to				
	“ from to				
	“ from to				
	3. Total Length Completed,				
	4. Length of double track on main line,				
BRANCHES.					
Name of Each.	Queen Mine from Main Line to Queen Mine		29		
	Blastee from " to C. & W. Connection		18		
	Barnum from " to Barnum Mine		60		
	from to				
	5. Total length of branches owned by company,			107	
	6. “ “ “ “ “ “ “ in Michigan,			107	
	7. “ “ road belonging to this company,				
	8. “ “ “ “ “ “ in Michigan,			2101	
	9. ‡Aggregate length in Michigan of sidings, spurs and other tracks not above enumerated,			902	
	10. ‡Aggregate length of tracks in Michigan belonging to this company, computed as single track,			3003	
	11. Gauge of track. 4 feet 8 1/2 inches,				

*Give main line and branches separately with a full description of each.—COM. OF RAILROADS.
 †Length in all cases to be given in miles and decimals. Give main line and branches separately with a full description of each.
 ‡These two items are of importance to the department, and it is desired that the answers should be accurately given.

DESCRIPTION OF ROAD—Continued.

PROPRIETARY OR LEASED ROADS OPERATED BY THIS COMPANY.	TOTAL MILES.	IN MICHIGAN.
1. Name, description and length of each,		
<i>We lease from and operate jointly with the C. & N. W. Ry, tracks at Salsperring, as follows:</i>		
<i>Main Line</i>		
<i>From C. & N. W. connection to Cleveland</i>		
<i>Lake Connection</i>	92	92
<i>Spurs and Sidings to various mines</i>	627	627
2. Total,	719	719
3. Total miles operated by the company,		2193

Above 92 miles are included in "Spurs, Sidings, etc" of C. & N. W. Ry and therefore not used by them in computing their earnings per mile of road. But constitutes part of our main line.

NUMBER OF BRIDGES AND TRESTLES IN MICHIGAN.

1. Wooden bridges, number of <i>6</i> ; aggregate length, feet,	649
2. Stone " " ; " " "	
3. Iron " " ; " " "	
4. Combin't'n " <i>1</i> ; " " "	3357
5. Wooden trestles, " ; " " "	
6. TOTAL, <i>13</i>	4006

DESCRIPTION OF ROAD.—Continued.

DRAW BRIDGES IN MICHIGAN.

- 1. How many on your line?
- 2. Where located, when built, and length of draw span,

None

- 3. Character of structure,
- 4. Material of which constructed,
- 5. Height above water, and depth of water under bridge,
- 6. How swung, by engine or hand power,
- 7. Approaches straight or curved,
- 8. Do you require all trains to come to full stop before crossing a draw, and how are they signaled?

None

CROSSINGS—RAILROAD AND HIGHWAY.

- 1. What railroads cross your road at grade in in this State, and at what locality?

Marquette and Regau Lake R. R. at *Regau Lake*
South Jackson Mine R. R. at *Regau*
Regau & Sappington Street R. R. at *Sappington*
Jesse Mine track of A. S. S. R. R. at *Regau*
 R. R. at
 R. R. at
 R. R. at
 R. R. at

- 2. What railroads cross your road either over or under your grade in this State, and where?

Over.—

R. R. at

R. R. at

Under.—

A. S. S.
Ch. R.

R. R. at

R. R. at

Regau, Margen Iron & Regau
Regau

DESCRIPTION OF ROAD—Continued.

CROSSINGS—RAILROAD AND HIGHWAY.

3. At what crossings are interlocking and derailing switches in operation?

None

4. What pattern or patterns have you adopted?

5. Number of crossings of highways at grade in this state,

6. Number of crossings of highways at grade in this state at which there are gates or flagmen,

3

7. Number of crossings at which there are electric or automatic signals,

8. What pattern or patterns in use?

9. Number of crossings of highways over or under railroad [Over . Under *6*],

6

10. Number of highway bridges 18 feet above track, _____

11. Number of highway bridges, less than 18 feet above track,

12. Have safety guards been erected at overhead obstructions?

*Yes
Yes*

13. Are your frogs and guard rails blocked as required by act 174, Session Laws, 1883?

14. How are they treated? *Blocked with wood*

STATIONS.

1. Number of stations on whole lines,

4

2. Same in Michigan,

4

EMPLOYES.

1. Number of persons regularly employed on all roads operated by company, including officials,

115

2. Same in Michigan.

115

3. Classify your employes as per following list:

NUMBER.

Baggagemen,

—

Brakemen,

6

Conductors,

3

Engineers,

9

Firemen,

9

Laborers,

26

Shopmen,

47

Yardmen,

20

Others,

*24
143*

DESCRIPTION OF ROAD.—Continued.

REPAIRS AND RENEWALS.

FENCING IN MICHIGAN.

1. How many miles of fencing have you?

22.6

2. Give the number of miles required to complete fence both sides of your track in Michigan, and the counties in which needed:

All in Marquette County

19.4

Total miles required,

ROAD BED AND TRACK.

1. Number of track sections in Michigan,

5

2. Average length of sections (miles),

4

3. Average number of men in each section gang,

4

4. Number of new ties put in whole line during the year,

None

5. Number of new ties put in track in Michigan,

6. Average number of new ties per mile of road,

7. New rails put in track,

Iron [tons] miles,

Steel [tons] miles,

8. Total miles of track laid with new rails,

BRIDGES AND CULVERTS.

1. Amount of trestlework replaced with earth during the year (linear feet),

2. Timber culverts replaced during year,

With iron pipe,—number,

With sewer pipe,—number,

With timber,—number,

None

DESCRIPTION OF ROAD.—Continued.

3. New bridges built during the year—Number, *None*

LOCATION.	KIND.	MATERIAL.	MONTH BUILT.	FEET IN LENGTH.

ROLLING STOCK.

	NUMBER.	PRESENT ESTIMATED VALUE
1. Number of locomotives of more than 30 tons weight, exclusive of tender,	11	7637567
2. Number of locomotives of 20 to 30 tons weight, exclusive of tender,	3	400396
3. Number of locomotives of 10 to 20 tons weight, exclusive of tender,		
TOTAL,	14	8039963
4. Number of passenger cars—12-wheel, including official cars, <i>None</i>		
5. Number of passenger cars—8-wheel, including official cars,	4	824667
6. Number of express and baggage cars, <i>None</i>		
7. Number of box freight cars,		
8. Number of stock cars, ✓		
9. Number of platform cars,	20	605613
10. Number of ore cars,	490	17007616
11. Number of conductors' way cars,	4	148185
12. Other cars as follows: <i>5 Hand Cars 5 Push Cars</i>	10	22787
Total, No.	528	\$ 18508768
13. Number of locomotives equipped with power brakes,	14	
14. Number of passenger-train cars equipped with power brakes,	4	
15. Number of freight cars equipped with power brakes,	510	
16. What patterns of power brakes have you in use, and number of locomotives and cars with each?		
<i>All engines and cars equipped with Westinghouse Automatic Air Brakes</i>		

ROLLING STOCK.—Continued.

18. Are your freight cars being equipped with automatic couplers as required by Act. No. 147, Session Laws of 1885, as amended by act No. 88, Session Laws of 1887? *All are so equipped.*

19. What pattern or patterns have you adopted for use? *Town*

20. How are your passenger cars heated? *Gas, Car Heating Co's system of furnishing steam from locomotive boiler
Baker heaters as auxiliary*

MILEAGE, TRAFFIC, ETC.

TRAIN MILEAGE.	ENTIRE LINES.	IN MICHIGAN.
1. Miles run by passenger trains during the year,		<i>11724</i>
2. Miles run by freight trains during the year,		<i>69998</i>
3. Miles run by mixed trains,		<i>Me</i>
4. Total mileage of trains earning revenue,		<i>81722</i>

MILEAGE, TRAFFIC, ETC.—Continued.

PASSENGER TRAFFIC.—Entire Lines:

	NUMBERS.	MILES.	RATE.	
			Dollars.	Cts.
1. Number of through passengers carried, earning revenue,				
2. Number of local passengers carried, earning revenue,				
3. Total number of passengers carried, earning revenue,				
4. Number of passengers carried one mile,				
5. Average distance carried,				
6. Average amount received from each passenger,				
7. Average receipts per mile for through passengers,				
8. Average receipts per mile for local passengers,				
9. Average receipts per passenger per mile for all passengers,				
10. Estimated cost of carrying each passenger one mile,				

All in Michigan

*PASSENGER TRAFFIC.—In State of Michigan.

	NUMBERS.	MILES.	RATE.	
			Dollars.	Cts.
1. Number of through passengers carried, earning revenue,	6132			
2. Number of local passengers carried, earning revenue,	1022			
3. Total number of passengers carried, earning revenue,	7154			
4. Number of passengers carried one mile,	114394			
5. Average distance carried,		16		
6. Average amount received from each passenger,				24
7. Average receipts per mile for through passengers,				014
8. Average receipts per mile for local passengers,				014
9. Average receipts for passenger per mile for all passengers,				014
10. Estimated cost of carrying each passenger one mile,				029

*This information must always be given.

MILEAGE, TRAFFIC, ETC.—Continued.

FREIGHT TRAFFIC.—Entire Lines.

	TONS.	MILES.	RATE. Dollars. Cts.	
1. Number of tons of through freight carried, earning revenue,				
2. Number of tons of local freight carried, earning revenue,				
3. Total tons of freight carried, earning revenue,				
4. Total mileage of through freight,				
5. Total mileage of local freight,				
6. Total freight mileage or tons carried one mile,				
7. Average ton haul for through freight,				
8. Average ton haul for local freight,				
9. Average ton haul for all freight,				
10. Average amount received for each ton haul,				
11. Average receipts ton per mile, for through freight,				
12. Average receipts ton per mile, for local freight,				
13. Average receipts ton per mile, for all freight,				
14. Estimated cost of carrying one ton one mile,				

All in Michigan

*FREIGHT TRAFFIC.—In State of Michigan.

	TONS.	MILES.	RATE. Dollars. Cts.	
1. Number of tons of through freight carried, earning revenue,	1489776			
2. Number of tons of local freight carried, earning revenue,	211091			
3. Total tons of freight carried, earning revenue,	1698867			
4. Total mileage of through freight,		32671144		
5. Total mileage of local freight,		3102599		
6. Total freight mileage or tons carried one mile,		35673743		
7. Average ton haul for through freight,		22		
8. Average ton haul for local freight,		14.7		
9. Average ton haul for all freight,		21		
10. Average amount received for each ton haul,				10.80
11. Average receipts ton per mile, for through freight,				00.44
12. Average receipts ton per mile, for local freight,				00.71
13. Average receipts ton per mile, for all freight,				00.52
14. Estimated cost of carrying one ton one mile,				00.39

*This information must always be given.

FREIGHT TRAFFIC MOVEMENT.—Entire Line.

[COMPANY'S MATERIAL EXCLUDED]

COMMODITY.		FREIGHT ORIGINATING ON THIS ROAD. WHOLE TONS.	FREIGHT RECEIVED FROM CONNECTING ROADS AND OTHER CARRIERS WHOLE TONS.	TOTAL FREIGHT TONNAGE.	
				WHOLE TONS.	PER CENT.
Products of agriculture,	Grain,				
	Flour,				
	Other mill products,				
	Hay,				
	Tobacco,				
	Cotton,				
	Fruit and vegetables,				
	Potatoes,				
	Total,				
Products of animals.	Live stock,				
	Dressed meats,				
	Other packing house products,				
	Poultry, game and fish,				
	Wool,				
	Hides and leather,				
	Total,				
Products of mines.	Anthracite coal,				
	Bituminous coal,				
	Coke,				
	Ores,				
	Stone, sand and other like articles,				
	Salt,				
	Total,				
Products of forest.	Lumber,				
	Logs,				
	Shingles,				
	Total,				
Manufactures.	Petroleum and other oils,				
	Sugar,				
	Naval stores,				
	Iron, pig and bloom,				
	Iron and steel rails,				
	Other castings and machinery,				
	Bar and sheet metal,				
	Cement, brick and lime,				
	Agricultural implements,				
	Wagons, carriages, tools, etc.,				
	Wines, liquors and beers,				
Household goods and furniture,					
	Total,				
Merchandise,					
Miscellaneous: Other commodities not mentioned above,					
	TOTAL TONNAGE,				

Michigan

*FREIGHT TRAFFIC MOVEMENT.—In State of Michigan.

[COMPANY'S MATERIAL EXCLUDED]

COMMODITY.	FREIGHT ORIGINATING ON THIS ROAD. WHOLE TONS.	FREIGHT RECEIVED FROM CONNECTING ROADS AND OTHER CARRIERS WHOLE TONS.	TOTAL FREIGHT TONNAGE.		
			WHOLE TONS.	PER CENT.	
Products of agriculture,	Grain, Flour, Other mill products, Hay, Tobacco, Cotton, Fruit and vegetables, Potatoes,		12	12	
	Total,		12	12	
Products of animals.	Live stock, Dressed meats, Other packing house products, Poultry, game and fish, Wool, Hides and leather,				
	Total,				
Products of mines.	Anthracite coal, Bituminous coal, Coke, Ores, Stone, sand and other like articles, Salt,	145 1641486 7000	17 38089 35	17 38234 7035	225 9662 41
	Total,	1648631	38141	1686772	9928
Products of forest.	Lumber, Logs, Shingles, <i>Wood</i>	180 80 15	450 565 1311	630 645 1326	13 03 08
	Total,	295	2326	2601	15
Manufac- tures.	Petroleum and other oils, Sugar, Naval stores, Iron, pig and bloom, Iron and steel rails, Other castings and machinery, Bar and sheet metal, Cement, brick and lime, Agricultural implements, Wagons, carriages, tools, etc., Wines, liquors and beers, Household goods and furniture,		16 16 5145 1778 1059 3 720 5 26	16 16 5145 1778 1158 3 720 30	30 10 07 04
	Total,	124 213	8942 384	8866 597	52 03
Merchandise, Miscellaneous: Other commodities not mentioned above,		19	19		
TOTAL TONNAGE,	1649243	49624	1698867	100	

*This information must always be given.

ADDITIONAL QUESTIONS.

EXPRESS COMPANIES.

1. What express companies run on your road, and on what terms and what conditions as to rates, etc.; what kind of business is done by them, and do you take their freights at the depot, or at the office of such express companies?

American Express Company

We receive compensation based on their earnings.

*They do a general express business
We take freight at depots*

TELEGRAPH.

2. Number of miles of telegraph on your road, and to whom does it belong?

*73 miles
Belongs to this company (L & N Ry)*

TRANSPORTATION COMPANIES.

Co-operative Freight Lines are not to be reported.

Sleeping, Drawing-Room, and Palace Car Companies.

3. What sleeping, drawing-room, chair or other palace passenger cars, not the exclusive property of your own or some other railroad company, have, during the year, been in use on your road in the State of Michigan, and on what terms? If rented by you, or allowed mileage between local points in this State, what was the amount paid for the use of such cars during the period under report?

NAME OF COMPANY.	GENERAL OFFICE.	AMOUNT PAID.
<i>None</i>		

*This information must always be given.

*REPORTS OF ACCIDENTS FOR MICHIGAN DURING THE YEAR 190...

KILLED.

DATE.	NAME AND OCCUPATION.	PLACE.	CAUSE AND RESPONSIBILITY FOR ACCIDENT.
	<i>None</i>		

*In giving "cause and responsibility for accidents," details are not required. Simply say, "fell from train," "caught foot in frog," "highway collision," "coupling," "trespasser," or as the case may be, and add "purely accidental," "from lack of caution," or "carelessness," as the facts were. In case of inquest, report company responsible or not according to verdict.

STATEMENT OF ACCIDENTS.—Continued.

INJURED.			
DATE.	NAME AND OCCUPATION.	PLACE.	CAUSE AND RESPONSIBILITY FOR ACCIDENT.
✓ May 16 th 1902	Harry Mraft Machinist	Proquede	While lifting a piece of machinery it fell on his foot—Accidental

TABULAR STATEMENT OF ACCIDENTS IN MICHIGAN.

CAUSE OF ACCIDENT.	KILLED.			INJURED.		
	PASSENGERS.	EMPLOYES.	OTHERS.	PASSENGERS.	EMPLOYES.	OTHERS.
Collisions,						
Coupling cars,						
Derailments,						
Falling from trains,						
Frogs,						
Getting on and off trains,						
Highway crossings,						
Miscellaneous,					/	
Overhead obstructions,						
Trespassers on trains,						
Trespassers on tracks,						
TOTAL,					/	

SUMMARY OF ACCIDENTS IN MICHIGAN.

Number of persons killed during the year,	<i>None</i>
Number of persons injured during the year,	<i>1</i>
Number of casualties purely accidental,	<i>1</i>
Number resulting from lack of caution, carelessness, or misconduct,	<i>None</i>
Persons killed or injured while intoxicated,	<i>✓</i>
Trespassers or tramps killed or injured,	<i>✓</i>
Suicides,	<i>✓</i>

CLASSIFICATION OF EMPLOYES.

KILLED OR INJURED IN MICHIGAN.

	KILLED.	INJURED.	TOTAL.
Baggagemen,			
Brakemen,			
Conductors,			
Engineers,			
Firemen,			
Laborers,			
Shopmen,		/	/
Yardmen,			
Not classified above,			
TOTAL,		/	/

State of Michigan,

COUNTY OF

Marquette

} ss.

H. P. Harris General Manager and W. C. John Auditor

OF THE

Lake Superior and Ishpeming

Rail. *Way*

Company,

being duly sworn, depose and say that they have caused the foregoing statements to be prepared by the proper officers and agents of this company, and having carefully examined the same, declare them to be a true, full and correct statement of the condition and affairs of said company, on the thirty-first day of December, A. D. 1902, to the best of their knowledge and belief.

Signed,

H. P. Harris

W. C. John



Subscribed and sworn to before me this *23rd* day of *March* A. D. 1903.

F. Stuart Byrnes

Notary Public

Received and filed in the office of the Commissioner of Railroads, this _____ day of _____ 1903.

Commissioner of Railroads.

