

Lake Mine

M A C H I N E R Y S U P P L I E S (Continued)

			Forward	336.68
29#	Brandon Valves		.80	23.20
1	Set Condensor Valves		14.35	14.35
4	#10 Springs		.25	1.00
2#	#6&8 "		.20	.40
8	Prescott Springs		.12	.96
4	#3,1/4 Side Leg Castings		1.40	5.60
12	#3,1/4 Sleeves		.85	10.20
2	#3,1/4 Front Leg Castings		4.10	8.20
4	" Valve Seats		1.50	6.00
4	" Slide Valves		.55	2.20
3	" Steam Chests		1.50	4.50
2	" Feed Nuts		1.50	3.00
2	" Jam Nuts		.35	.70
1	" Feed Screws Handles		1.00	1.00
3	" Cross Heads		1.00	3.00
3	" Rockers		5.20	15.60
2	" Feed Screws		2x50	5x00
1	" Chuck Keys		.35	.35
7,1/2	Prs. Pawls		1.00	7.50
6	" Rocker Pins		.25	1.50
4	" Pawl Studs		.30	1.20
12	Sets Piston Rings		2.57	30.84
21	" Piston Springs		.10	2.10
5	" Buffer Yokes		.20	1.00
1	" Front Leg Bolt		.30	.30
15	" Chucks Bolts		.50	7.50
7	" Set Screws		.07	<u>.49</u>
				<u>152.69</u>

Forward

489.37

Lake Mine.

MACHINERY SUPPLIES (Continued)

		Forward	489.38
5	#3,1/4 Rubber Buffers	.65	3.25
8	#3,1/4 Pipe Legs	1.00	8.00
2	#3,1/4 Extension Legs	.75	1.50
9	#3,1/4 Cylinder Bolts	.20	1.80
1	Center Clam p	7.00	7.00
3	Hook Bolts	2.00	6.00
3	Hook Bolts	1.25	3.75
27	#1612 Castings	.40	10.80
13	1612 " "	.15	1.95
57	1616 " "	1.50	74.10
60	Draw Head Springs	1.05	63.00
1	Set Wheels on Axle	9.80	9.80
1108#	Ltgs	2.90	32.13
11	#1581 Castings	.40	4.40
15	#1582 " "	1.00	15.00
875#	Draw Head Cores	2.90	25.38
600#	" "	2.90	17.40
4	Grooved Sheaves for Top Tram System	70.00	280.00
76'	3" Pipe	.755	57.38
482'	4" "	1.08	520.56
158'	5" "	1.45	229.10
243,1/2'	6" "	1.88	457.78
12	8" "	2.82 -66,1/2-5-50	5.38
	Less 66,1/2-5% -10%	1264.82	<u>362.28</u>
			<u>932.92</u>
	Total Machinery Supplies		1422.29

Lake Mine.

BUILDING MATERIAL.

30493	' 2" Hemlock	11.50	350.67
12429	' 3" "	13.50	167.79
6119	' 2" Maple	13.50	82.61
4351	' 1, 1/4" Oak	31.50	137.06
1157	' Pcs. 13884" 1, 1/2 x 6 x 16 Hem.	13.50	187.43
1404	Pcs. 2 x 10 x 12 2" Norway	28080	'15.00 421.20
262	" 2 x 10 x 14 2" "	6113	'15.00 91.70
203	" 2 x 12 x 12 2" "	4872	'17.50 85.26
107	" 12 x 12 x 18 "	23112	'20.25 468.02
279	" 12 x 12 x 12 "	40176	'19.25 773.39
66	" 10 x 12 x 12 "	7920	'19.25 152.46
64	" 8 x 12 x 12 "	6144	'19.25 118.27
16	" 8 x 12 x 16 "	2048	'19.25 39.42
17	" 6 x 12 x 16 "	1632	'19.80 31.82
18	" 3 x 8 x 14 Oak	504	'31.50 15.88
4	" 3 x 8 x 12 "	96	'31.50 3.02
6	" 6 x 10 x 14 "	420	'31.50 13.23
6	" 4 x 10 x 14 "	280	'31.50 8.82
12	" 4 x 6 x 16 "	384	'315.0 12.10
2	" 4 x 6 x 12 "	48	'31.50 1.51
4	" 7 x 9 x 16 "	336	'31.50 10.58
57	" 2 x 12 x 14 Norway	1596	'17.50 27.93
1792	' 4" Hemlock	17.50	<u>31.36</u>

Total Building Material

3231.53

Lake Mine

EXPLOSIVES.

800#	50%	Anthony Powder	#	.12	96.00
1250#	40%	"		.105	131.25
1350#	50%	Ammonia "		.115	155.25
8300'		Climax Fuse	M	4.25	35.27
1700		Knives	M.	6.00	10.20
400		Electric Fuses	M.	30.10	12.04
6#		Battery Wire	#	.30	<u>1.80</u>

Total Explosives 441.81

FUELED.

4199 Tons Coal 2.46 ⁷¹/₁₀₀ 10359.35

Total Fuel 10359.35

Lake Mine

M I N E T I M B E R.

37868'	6 x 8	Timber	.02	757.36
80522'	8 x 10	"	.03	2415.66
11276'	10 x 12	"	.05	<u>563.80</u>
47274'	12 x 14	"	.065 8	3072.81
29232'	14 x 16	"	.09	<u>2630.88</u>
8432'	16 x 18	"	.09	758.88
88000'		Poles	.01	880.00
94500'	7'	Lagging	.60	567.00
75'		Cords 5' Lagging	3.25	243.75
440	3,1/2'	Ties	.10	44.00
2045	4'	"	.10	204.50
21	18'	"	.90	<u>18.90</u>
				<u>12157.54</u>

Less Depreciation on large timber,

Being overrun in the account

248.50

Total Mining Timber

11909.04

1199 TONS COAL

Lake Mine.

A N T I Q U A T E D

#3 Rand Drill Supplies.				
3	Slide Valve Seats		2.75	8.25
7	Chuck Keys		.35	2.45
3	Rotating Bars & Ratchet	5.00 - 50%	15.00	7.50
3	Ratchets	3.00 - 50%	9.00	4.50
1	Front Head		1.50	1.50
6	Ratchet Boxes		4.75	28.50
32	Tripod Clamp Bolts		.50	16.00
23	Extension Legs		.75	17.25
3	Cylinders	10.00 - 50%	30.00	15.00
7	Pawl Stud Washers		.10	.70
3	Rockers		5.20	15.60
15	Pawl Studs		.35	5.25
1	Steam Chest & Throttle		5.25	5.25
21	Set Screws		.08	1.68
2	Steam Chest Studs		.50	1.00
5	Rocker Pin Studs		.25	1.25
2	Slide Valves		1.00	2.00
1	Feed Screws Handle		.75	.75
7	Plugs		.10	.70
2	Slide Valve Seats		2.75	5.50
10	Cylinder Bolts		.25	2.50
20	Tripod Sides		1.25	25.00
6	Front Leg Castings		1.50	9.00
18	Rheostate Bushings	7, 1/2-90%	1.35	.14
1	" Frame	4.25	" 4.25	.43
8	Pcs. Porcelain	.05	" .40	.04
3	" Slate	.05	" .15	.02
5#	Mica	1.25	" 6.25	.63
15#	"	1.25	" 18.75	<u>1.88%</u>
Forward				180.27

Lake Mine.

A N T I Q U A T E D (Continued)

#3 Rand Drill Supplies. (Continued)

		Forward			180.27
28	Contact Pieces	.05	-90%	1.40	.14
98	"	.06	"	5.88	.59
4	Knife Blades Pieces	.50	"	2.00	.20
1	Double Contact Spring	.63			.63
1	" Shoe	12.50			12.50
1	" Arm	1.25			<u>1.25</u>
					15.31
20' 6"	20" Riveted Pipe - Flanged				
1	14" " Elbow "				
1	12 x 9 x 6 Cast Tees				
1	12 x 8 x 6 "				
3	12 x 12 x 6 "				
1	6x 9 x 6 "				
2, 1/2	Prs. 12" Flanges				
1	8' Bicycle Sheave				
1	6' Cast Iron Sheave				
12	47" x 38 x 15 Brown Stone Blocks				
6	47 x 18 x 12 "				
					195.58
			100%		<u>195.58</u>
			Total Antiquated		<u>000.00</u>
			<u>S C R A P.</u>		
1/2	Ton Manganese	Steel Wheels	4.00		2.00
3	Ton Cast Iron	Scrap	10.00		30.00
1	" Steel Plate	"	8.00		8.00
1/2#	Wrought	"	10.00		5.00
660#	Copper Wire	"	.38		25.09
215#	Cast Brass	"	.07		<u>15.05</u>

Total Scrap

85.14

MINE EQUIPMENT.

POWER DRILLS

12	#3 Rand Drills		109.08	1308.96	
3	#3,1/4 "	Complete	130.25	390.75	
2	#3,1/4 "	No Tripod	82.72	165.44	
3	#3,1/4 "	Belongs to Michigamme			
		Less 100%		1865.18	00.00

CARS SKIPS & DERRICKS.

2	Cory Side Dump Cars			277.02	
3	Large Wood End Dump Cars			265.50	
4	Large Wood Side Dump Cars				
4	"	"	"	P. Isle	
8	Motor Bottom Dump Cars	2" Lev	1138.51	1108.08	
9	"	"	2" Lev.	847.08	
14	"	"	Surface	94.12	1317.68
5	"	"	2" Lev.		
25	" Side	"	3" "		
3	<i>Cars</i> Iron Body	on Surface			
5	"	"	Made at Salisbury	202.50	
29	Wood Body Cars				
3	"	"	Rebuilt in /02.	1028.48	
16	"	"			
6	Iron Body Cars				
8	Large Timber Trolley Cars				
6	Small	"	"		
1	Lory Push Car			6.57	
4	Steel Skips	3 Ton	1.2" Level	472.40	
2	"	1 "	1. Hard Ore	106.28	
1	"	For Lowering Timber		220.16	
2	"	3 Ton on 2" Level			

Lake Mine.

MINE EQUIPMENT (Continued)

CARS SKIPS & DERRICKS (Continued).

	Forward	5851.75
3	Winches for Hoisting Timber	35 40
4	" " 3.04	12.16
1	Plate Bender for Making Cars Hard Ore	
2	Derricks Hard Ore	
1	3" Bicycle Sheave Charged off	47.56
	100%	5899.31
		<u>5899.31</u>
	Total Cars Skips & Derricks	6000.00

PORTABLE MACHINERY.

1	Double Engine Top Tram	177.12
1	" " "Winter"	
	1 Salisbury)	
2	Double Hoists Ledgewood 1 2" Level)	732.22
4	Single " " "	1123.36
1	Double Hoist L. S. I. on Trestle	118.10
1	Worm Gear For Dump Sticks	262.04
1	Duplex Deane Pump 3" Level	243.00
	1 2" Level)	
2	#10 Knowles Pump)	
	1 Maas)	648.54
2	#10 " 1 Negaunee Mine 1 Maas Mine.	354.30
2	#3 " 1 Lake Bottom	59.04
1	#5 " "	83.00
1	#6 " 3" Level Winze	118.60
1	#6, 1/2 " Feed Boiler	132.84
3	#7 " Lake Bottom	346.89
1	#7 " 3" Level	162.41
1	#7 " At Swanzy	162.41
1	#8 " Water End Broken H.O. Yard	99.63
1	#8 " 2" Level Belongs to Cliffs Shaft	
1	#4, 1/2 " Lake Bottom	

Lake Mine.

M I N E E Q U I P M E N T (Continued).

P O R T A B L E M A C H I N E R Y (Continued)

	Forward	4829.50
1 #7	Cameron Pump Lake Bottom	162.41
1 #10	" Lake Bottom Ashland	
1 #3	Worthington Pump 3" Level H0.	
1 #6	Blake Spiral Pump	
1	6, 1/2 H. P. Electric Timber Hoist	667.99
1, #6, 1/2	"	<u>631.46</u>
		1461.86
		6291.36
		<u>6291.36</u>
	Total Portable Machinery	<u>0000.00</u>
	100%	

B A R N .

1	Bay Horse "Mark"	
	Bought in 1901 140.00 Less 50%	70.00
	Less 28% ÷ 40	<u>20.00</u>
		50.00
1	Single Open Buggy	20.25
1	Single Cutter Broken	<u>0.00</u>
		20.25
	Less 100%	<u>20.25</u>
		<u>00.00</u>
	Total Barn	50.00

Lake Mine.

S U P P L Y & E Q U I P M E N T.

Recapitulation of Inventory, November 30, 1902.

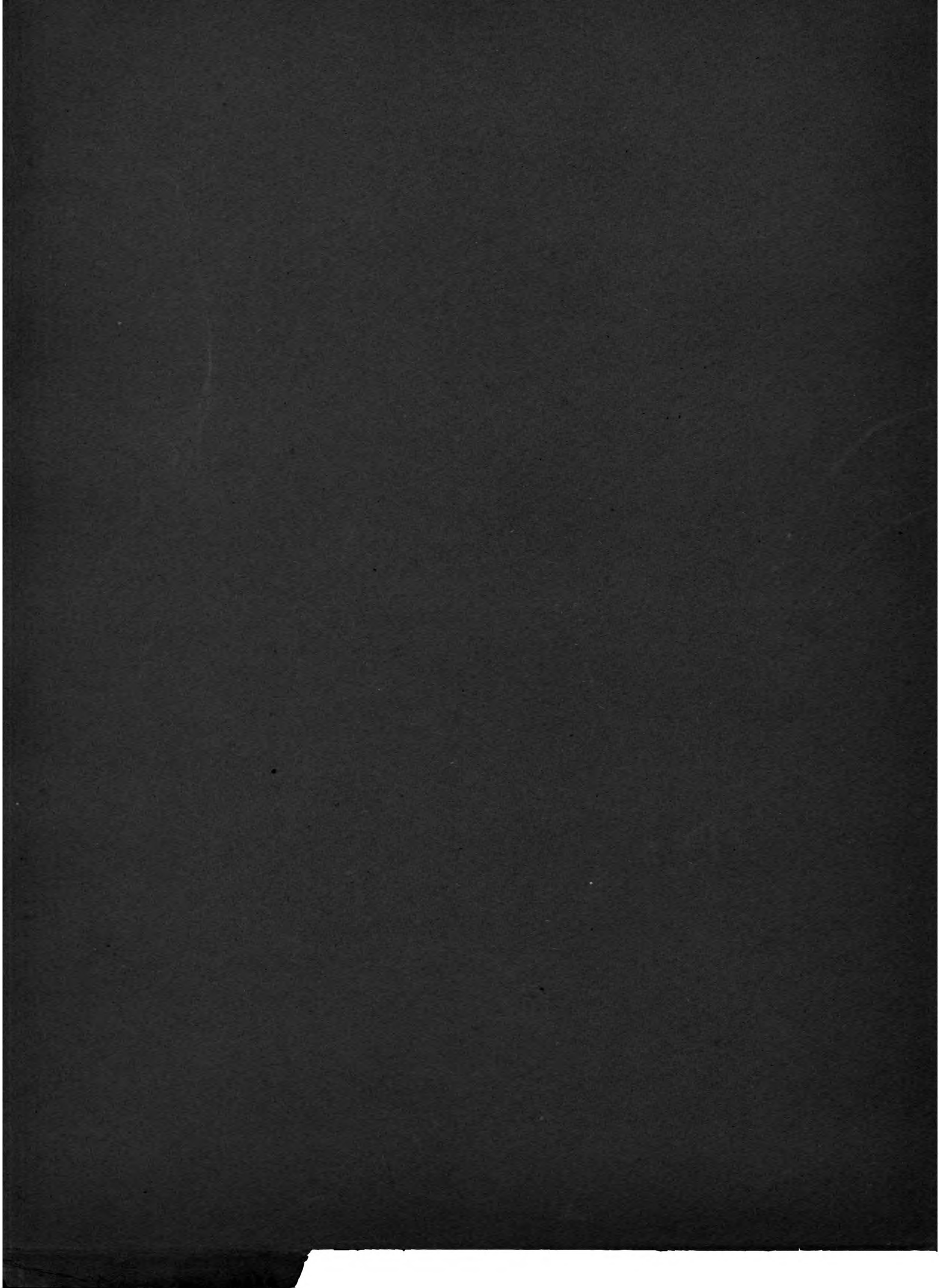
General Supplies	2569.80	
Iron & Steel	679.75	
Oil, Grease & Candles	553.89	
Machinery Supplies	1422.29	
Building Material	3231.53	
Explosives	441.81	
Mine Timber	11909.04	
Fuel	<u>10359.35</u>	
	Total	31167.46
Scrap		85.14

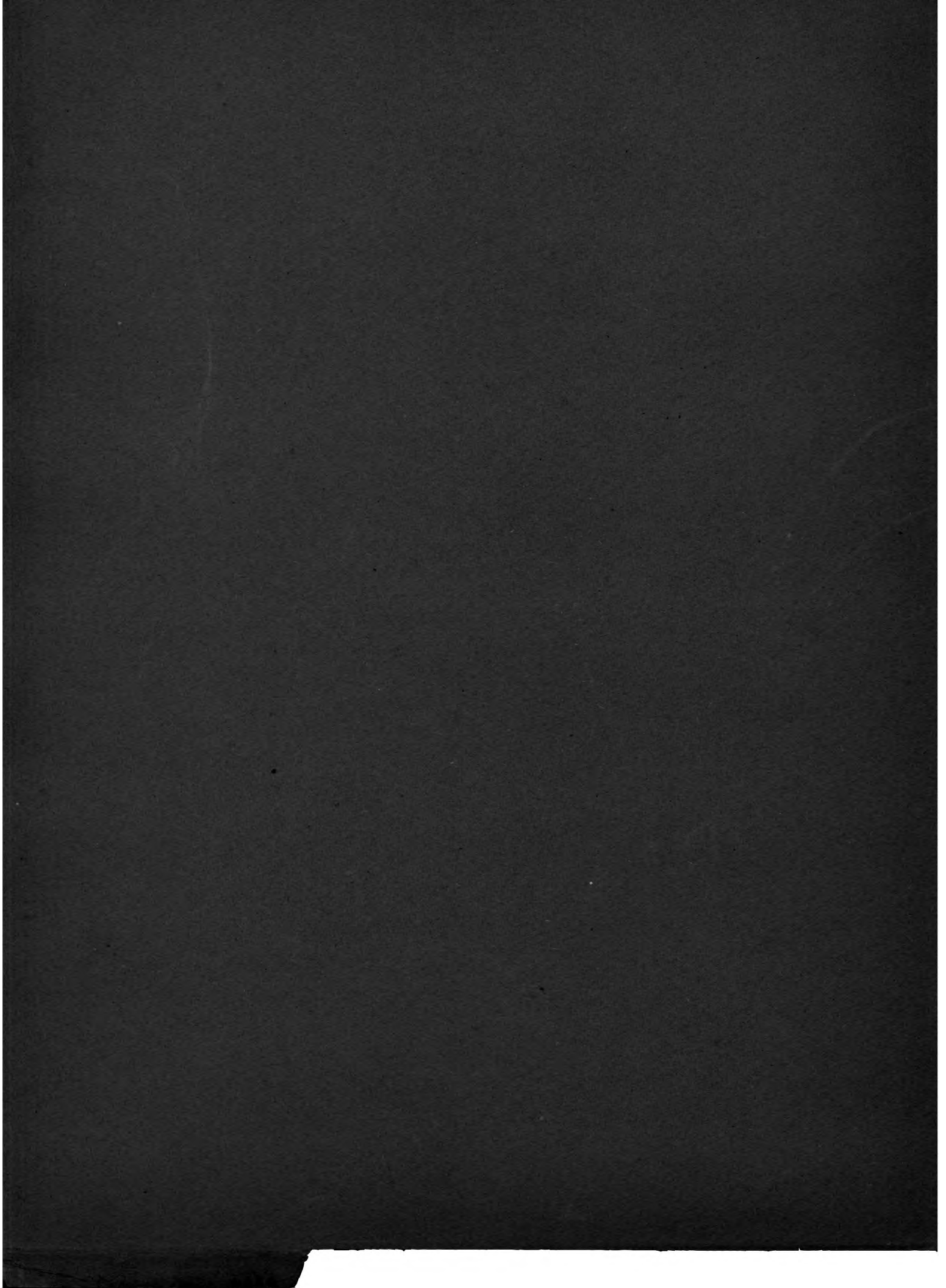
<u>Mine Equipment</u>	<u>Valuation</u>	<u>Per Cent</u>	<u>Deduction</u>	<u>Net Amount</u>
Power Drills	1865.15	100	1865.15	
Cars Skips & Derricks	5899.31	100	5899.31	
Portable Machinery	6291.36	100	6291.36	
Barn	<u>70.00</u>	28%+.40	<u>20.00</u>	<u>50.00</u>
Total	14125.82		14075.82	50.00

Grand Total

31302.60

27





IRON CLIFFS COMPANY

I N V E N T O R Y .

O F

P E R S O N A L P R O P E R T Y

NOVEMBER 30th. 1902.

I S H P E M I N G . M I C H .

IRON CLIFFS COMPANY

INDEX TO INVENTORIES, NOVEMBER 30th., 1902.

	CLIFFS SHAFT	SALISEBURY
Buildings - - - - -	1	1
Plant - - - - -	2 --- 3	2 -- 3
General Supplies - - - - -	4 --- 7	4 -- 5
Iron & Steel - - - - -	8 --- 17	6 -- 9
Oil Grease & Candles - - - - -	18	10
Machinery Supplies - - - - -	19 --- 35	11 -- 15
Building Material - - - - -	36 --- 38	16
Explosives - - - - -	39	16
Mine Timber - - - - -	39	17
Fuel - - - - -	39	17
Barn - - - - -	40	17
Antiquated Material - - - - -	40 --- 42	18
Scrap - - - - -	43	18
Mine Equipment - - - - -	44 --- 49	19 --20
Recapitulation - - - - -	50	21

I N D E X

ARTICLES	CLIFFS SHAFT	SALISBURY
Antiquated Material - - - - -	40 -- 42	18
Axes - - - - -	4	5
Babbitt - - - - -	7	4
Barn Equipment - - - - -	40	17
Barn Supplies - - - - -	40	17
Beams - - - - -	12 -- 33	
Bends - - - - -	24	
Bolts Machine - - - - -	11, 15	
Bolts, Carriage - - - - -	9 -- 10	9
Boilers - - - - -	2	2
Books, Time - - - - -	7	
Borax - - - - -	6	4
Brick, Fire - - - - -	31	
Buildings - - - - -	1	1
Building Material - - - - -	36	16
Buffers - - - - -	27	
Brushes - - - - -	6	4
Bushings - - - - -	19 - 30	11
Cans, Oil - - - - -	5	4
Candles - - - - -	18	16
Caps - - - - -	39	
Caps, Car Wheels - - - - -	28	14
Carbon DD. - - - - -	7	
Cars Skips & Derricks - - - - -	46	20
Carts, Wagons & Sleighs - - - - -	48 -- 49	20
Castings - - - - -	26	
Cells, Sampsons - - - - -	6	
Chimneys - - - - -		4
Cloth, Wire - - - - -	5	
Coal, Blossburg - - - - -	6 -- 7	4
Cocks, Stop - - - - -	20	
Cocks, Pet - - - - -	25	
Coke - - - - -	7	
Column Water - - - - -	33	
Couplings - - - - -	20	11
Crosses - - - - -	20	11
Crusher Castings - - - - -	31 -- 32	
Cylinder Heads - - - - -	26	
Diamond Drills - - - - -	44	
Drill Steel - - - - -	17	7
Dwellings - - - - -	1	1
Elbows - - - - -	21 -- 34	11
Explosives - - - - -	39	16
Electric Light Supplies - - - - -	6	
Fibre Vulcanized - - - - -	27	14
Files - - - - -	4 -- 7	5
Fire Extinguishers - - - - -	5	3
Flanges - - - - -		13
Flooring - - - - -		16
Fuel - - - - -	39	17
Glass, Lights - - - - -	38	
Glasses, W.G. - - - - -	26	14
Globes, Opal & Clear - - - - -	5	4
General Supplies - - - - -	4, 7	4 -- 5
Grate Bars - - - - -	33	14

I N D E X, Contd.

	CLIFFS	SHAFT	SALISBURY
Handles		5	5
Hemlock		36	16
Hammers			5
Holdes, Carbon		7	
Horses		47	20
Hose, Air		26	
Inspirators		26	
Iron	8 --	17	6 -- 9
Iron & Steel	8 --	17	6 -- 9
Ladders		6	
Ladder Rounds		4	4
Lagging		39	17
Lanterns		5	
Lamps, Inc.		6	4
Linseed Oil		38	16
Lumber		36	16
Magnolia		4	
Maple		36	16
Machinery Supplies	19 --	35	11 -- 15
Machinery Supplies, Antiquated		41	
Mine Timber		39	17
Nails			9
Nipples	22, 23,	33	13
Nuts		16	8
Oak		37	16
Oil Grease & Candles		18	10
Oilers, Galv.			4
Packing		27	15
Pails		4	
Paint		38	16
Pipe	19, 21		11
Pipe Coverings		28	
Plant	2, 3		2
Plugs	22, 35		13
Portable Machinery		47	19
Power Drills		45	19
Powder		39	16
Pumps, Steam		47	2
Pump Valves		27	15, 19
Rails		17	6
Rand Drill Supplies	28 --	30	14
Recapitulation		50	21
Rivets		8, 15	8
Rope		4, 6	5
Salt		6	5
sal Soda		5	
Saws		5	5
Scrap		43	18
Screws		9	8
Sewer Pipe		28	
Shafting		13	
Sheaves	26, 32		14
Shingles		36	
Shoes, Horse		40	17
Shovels		4	5
Spikes		8	8
Springs		26	14
Steel	7 --	12	6 -- 9
Swab sticks		6	

I N D E X, Contd.

ARTICLE	CLIFF SHAFT	SALISBURY
Tees	23,35	11
Timber	39	17
Unions	24,33	11
Valves	25,34	13
Valves, Pump	27	
Washers	8,9	8
Waste	4	4
Wicking	5	4
Wheels, Gear	33	
Wheels, M. Steel	26	14
Wrenches	4	5
Wire	5	

IRON CLIFFS CO.

Cliffs Shaft Inventory, November 30th, 1902.

Buildings.

- 1 Stone Engine House
- 1 Stone Boiler House
- 1 Brick Smoke Stack
- 1 Steel Smoke Stack
- 1 Stone Blacksmith and Machine Shop
- 1 Stone Mine Office and Laboratory
- 1 Frame Carpenter Shop
- 1mFrame Warehouse
- 1 Brick Dry House(built in 1902.)
- 1 Frame Barn
- 1 Frame Carriage House (built in 1901).
- 1 Frame Crusher House
- 1 Frame Crusher Engine House
- 2 Frame Shaft Houses
- 2 Double Ore Pockets (Combined).
- 2 Single Ore Pockets
- 1 Trestle "A" Shaft to Single Pocket.
- 1 Trestle "B" Shaft to Single Pocket
- 1 Trestle A Shaft to Crusher Pocket
- 1-Trestle B Shaft to Crusher Pocket
- 1 Trestle Crusher to double Pocket
- 1 Trestle Double Pocket to Stocking Ground
- 1 Coal Shed 5000 tons Capacity
- 1 House, Auditor
- 1 House, Paymaster
- 4 Double Dwellings
- 4 Single
- 1 Boarding House (built in 1899). \

Cliffs Shaft Mine.

PLANT.

1- 28" x 36" Hoisting Engine with 10' Drums carrying 2900' of 1-1/2"
Steel Wire Rope.

1 -28" x 36" Pumping Engine with three 14" and one 20" Plungers, 12" x
12" Pump Rods and Carriers Complete.

2 -16" x 36" Duplex Rand Air Compressors with 2 - 48" and 24" Air
Receivers Connected with Air Pipes from Air Receiver to Bottom
of "A" and "B" Shafts.

1 -#8 Knowles Pump (Engine House)

1 -Duplex Worthington Fire Pump

1 -Electric Light Plant with 25 Arc Lights(2 destroyed by fire Dec.
1st, in Dry House.

8 -60" Boilers Complete

2 -#5 Knowles Feed Pumps (Boiler House)

2 -7 x 10 Duplex Engine(Puffers)

500' -2 1/2" Rubber fire Hose

2 -Nozzles

1 -Siznese Cross

1 -New Hose Cart (Built in 1901)

1 -Hose Cart

Engine
FROM OLD BARNUM HOUSE.

1 -60" Boiler Cleveland Yard

1 -60" Boiler Salisbury.

2 -Drums-Scrap

1511' -7/8" Wire Rope on Drums at Foster

Cliffs Shaft Mine

PLANT

Crusher.

- 1 20" x 30" Engine and Shafting
- 1 Hodge Crusher
- 1 Holly Crusher
- 1 Gates sample Crusher
- 1 Conveyor Engine with Buckets Complete in yard

Old Boiler House.

- 1 Water Heater for Boiler
- 1 14" x 48" Corliss Engine-Yard.
- 1 Old Iron Smoke stack.

Cliffs Shaft Mine.

GENERAL SUPPLIES

3000	1/2" Steel Wire Rope	.11,45-12,1/2-5%	151.87
455	1 5/8" do.	.14,30-7,1/2%	42.25
10	only, Rd Pt. Shovels,	per doz.	8.50 7.08
1	Only Square Point Shovel	"	8.75 .73
3	Doz. No. 3 Roch. Lamp Chimneys	"	1.90 5.70
160#	Manila Rope	.13,1/2	21.60
1	Only Snow shovel		.90
1	Only No. 8 Scoop shovel		1.00
1	Only Long handle Shovel	.75	.75
5.1/4#	Candle Wicking	.15	.79
3	Fibre Pails Per Doz.	3.00	.75
2	Barn Pails "	3.00	.50
43#	White Waxste	7.25	3.12
98#	Colored Wasre	.05	4.90
488	Ladder Rounds	19.50	9.52
112#	Magnolia Metal	.22	24.64
2	7" Taper Files	4.30	.71
21	12" "	12.50	21.88
6	12" Flat Bast. Files	9.70	4.85
16	14" Do.	13.30	17.73
9	16" Do.	17.80	13.35
2	14" Round Bast. Files	10.70	1.79
1	14" Mill File	10.70	.89
			61.20
	Less 75 %		15.30
1/2	Doz. 12" Wrenches	14.00-50%	3.50
1/6	Doz. 15" "	24.00-50%	2.00
2	Single bit axes	.75	1.50
7	Axe Handles Per Doz.	1.25	.73
77	Poll Pick handles "	1.00	6.41

Forward

305.54

Cliffs Shaft Mine.

GENERAL SUPPLIES.

	Amount Bro't For'd	305.54
53 Sledge Handles	1.25	5.52
1 Adze	.25	.25
1 Only, lqt. Oilers	per doz. 3.00	.25
4 Bpal Electric Globes	" 5.00 / frt.	1.87
18 Clear Electric Globes	" 5.00 / "	8.40
2 26" Spoint Hand Saws	" 8.00	1.33
11# 3/4" Manila Rope	.135	1.48
5 1 Gal. W. J. Oil Cans	.20	1.00
1 2 Gal. Oil Cans, W. J.	.30	.30
1 5 " " "	.50	.50
1 10 " " "	.75	.75
2 Lanterns #2 Buhl	4.50	.75
4 Dippers	.08	.32
1 1 Sq. Lantern Frame		1.00
1/4 Dz Lanterns Globes	.50	.12
1/4 " " Burners	.70	.18
1,10/12 Doz. Lantern Wicks	.10	.18
1 Street Lamp Globe	4.00	.33
17 Fire Extinguishers, "Manville"	1.50	25.50
5 Wheel Borrows (Sand)	1.50	7.50
80 1/4 x 4, 1/2" Spring Cotters	.50	.40
63 Brass Checks for Cars	.80 per 100	.50
94# Pig Lead	.835	3.29
13\$ Shts Emery Cloth	per doz. .30	.32
302 Sal Soda	1.25 "	3.78
1 Dz. Moonshine Torches	" 2.95	2.95
6 Gasaline Torches	1.58	9.48
326' Wire Cloth 3/16" Mesh	.03	26.08
4 Kerosene Tin Torches	" 2.95	1.00
1 W. Wash Head		1.25
31# Barbed Wire	.04	1.24
Total	5	107.82

107.82 413.36

MINN Cliffs Shaft.

GENERAL SUPPLIES (Continued). Forward 413.36

6	Switch Springs		.07	.42
6	& Fork Levers		.30	1.80
30	30 Vule Bushings		.02	.60
2	& Lower Cutout Switch Camp		.25	.50
6	& Cutout Points		.18	1.08
8	& Brass Bushings		.09	.72
30	30 Lava Bushings		.20	6.00
40	40 Lower Carbon Holders		.17	6.80
13	13 Sets (4) Dynamo Brushes		.40	5.20
2	& Brush Holders (1 set)		.72	.72
25#	Ammonia Ammonia Soap		.055	1.37
155'	Ladders		.08	12.40
1800'	1, 1/4" Steel Wire Rope		.46 30%	536.13
3200'	1, 1/2 Swedes Iron "		.57 30 & 7, 1/2	21.68 1,81.04
93	Swab Stick		.125	11.62
412	Ladder Sides		.01	4.12
90#	Salammoniac		.095	8.55
19	#2 Sampson Zincs	per doz.	.11	2.09
12	#3 "	"	.25	3.00
2	Retaining Magnets	"	.40	.80
19	16 C. P. Lamps		.25	4.75
6	Glass Insulators		.02	.12
22, 1/2#	Brass Spring Wire		.35	7.87
2	Brooms	"	4.20	.70
12#	Bbls. Salt, Old Stock		.90	10.80
119	" New "		.85	101.15
5	Sledges Handled	100#	3.00	15.00
11	Tons Blossburg Coal		3.75	41.25
10#	Borax		.125	<u>1.25</u>

Total

Forward

1967.85
1976.56
2381.21

Cliffs Shaft.

GENERAL SUPPLIES.(Continued)

	Amount For'd		2381.21
4# Steel Wire for pawl <i>Spring</i>	.15	.60	
57# 1/4" Brass Spg. Wire	.25	14.25	
12.1/2# Gen. Babbit	.31	3.87	
1# Cyanide Potsh	.75	.75	
4 4" Brass rods	.30	1.20	
40 40 Top Carbon Holders	.17	6.80	
1 1/4# Salder	.25	.31	
1/2 Gro. White Chalk Cones	.60	.30	
3 10" Smooth Files	9.80-75%	.61	
2 12" "	12.10 "	.50	
11 Doz. Small time books	2.55	30.05	
2,3/4 " Long "	4.50	12.37	
4# Brass Spg. Wire 3/32	.30	1.20	
61 ¹⁸⁵¹ Tons Blossburg	3.75	232.21	
51 ¹⁸⁵¹ " Coke	6.40	332.32	
827,1/64 Carats of Carbon	47,453 .4730	39244.32	
23,55/64 "	5.00	<u>119.29</u>	40000.95 43375.83
Total General Supplies			42382.16

The Cliffs Shaft Mine.

IRON & STEEL.

112#	3/8 x 3/4	Burden Rivets	.04	4.58
42#	1	"	.04	1.68
59#	1, 1/4	"	.04	2.36
73#	1, 3/4	"	.04	2.92
11#	1/2 x 1, 3/4	"	.04	.44
80#	5/8 x 1, 1/4	"	.04	3.20
71#	1, 1/2	"	.04	2.84
8#	1, 3/4	"	.04	.32
25#	2	"	.04	1.00
75#	2, 1/4	"	.04	3.00
91#	2, 3/4	"	.04	3.64
59#	3"	"	.04	2.36
86#	3/4 x 1, 3/4	"	.04	3.44
34#	2, 1/4	"	.04	1.36
23#	4d W.	Nails	2.70	.62
8#	6d	"	2.60	.21
17#	10d	"	2.45	.42
134#	20d	"	2.40	3.22
200#	40d	"	2.40	4.80
33#	60d	"	2.40	.79
238#	10d	Fishing	3.45	8.25
60#		Lath Nails	3.15	1.89
104#	8"	Casing	2.75	2.04
148#	9/16 x 5, 1/2	R. R. Spikes	2.75	4.07
171#	5/8 x 2, 1/2"	Track Bolts	7.90	6.76
8#	3/8	Washers Cut	.04	.32
19#	1/2	"	.04	.76
21#	5/8	"	.04	.84
14#	7/8	"	.04	.56
9#	1	"	.04	.36
79#	1, 1/4	"	.04	2.80
104#	8"	Boat Spike	4.70 per keg	2.45

Total

8

74.20

Cliffs Shaft.

I R O N & S T E E L (Continued)

	Bro 't For 'd.		74.20
35# 1" Cast Washers	1.75	.58 ✓	
48 1/2 x 3" Coach (Lag) Screws	4.83	2.32	
217 5/8 x 3" "	6.000	13.02	
221 5 "	8.00	17.68	
92 3/4 x 3 "	15.00	14.35	
	Less 75-10 %	47.37	11.84
79 1/4 x 1,1/4 Carriage Bolts	1.00	.79	
50 5/16 x 2,1/2 "	1.40	.70	
10 3 "	1.40	.14	
66 3/8 x 1,1/2 "	1.60	1.06	
54 2 "	1.76	.95	
38 2,1/4 "	1.84	.70	
50 2,1/2 "	1.92	.96	
107 3 "	2.08	2.23	
108 3,1/4 "	2.16	2.32	
110 3,1/2 "	2.24	2.46	
50 3/8 x 3,3/4 "	2.38	1.16	
90 4 "	2.40	2.16	
100 4,1/2 "	2.56	2.56	
325 5 "	2.72	8.84	
190 5,1/2 "	2.88	5.47	
175 6 "	3.04	5.32	
270 6,1/2 "	3.20	8.64	
80 7 "	3.36	2.69	
	Forward	49.15	86.04

Cliffs Shaft.

I R O N & S T E E L. (Continued).

			Bro't For 'd	49.15	86.04
190	1/2 x 1,1/2	Carriage Bolts	3.00	5.70	
140	2	"	3.00	4.20	
50	2,1/2	"	3.00	1.50	
210	3	"	3.22	6.76	
150	3,1/2	"	3.44	5.16	
50	4	"	3.66	1.83	
160	4,1/2	"	3.88	6.21	
50	5	"	4.10	2.05	
170	5,1/2	"	4.32	7.34	
360	6	"	4.54	16.34	
20	6,1/2	"	4.76	.95	
50	7	"	4.98	2.49	
60	1,1/2	"	5.20	3.12	
90	6	"	7.53	6.82	
40	3/4 x 8	"	12.26	<u>4.90</u>	
			Less 60-10%	123.52	44.47
50	3/8 x 2	Machine Bolts	2.56	1.28	
75	2,1/2	"	2.72	2.04	
270	3	"	2.88	7.78	
45	3,1/2	"	3.04	1.37	
85	1/2 x 1,1/2	"	3.60	3.06	
40	2	"	3.86	1.54	
145	3	"	4.38	6.35	
170	3,1/2	"	4.64	7.88	
65	4	"	4.90	3.19	
35	4,1/2	"	5.16	1.81	
50	5	"	5.42	2.71	
60	6	"	5.94	<u>3.56</u>	
			Forward	42.57	130.51

Cliffs Shaft.

IRON & STEEL. (Continued).

		Bro 't For 'd.	42.57	130.51
100	5/8 x 1 Machine Bolts	5.20	5.20	
75	1, 1/2 "	5.20	3.90	
95	2 "	5.58	5.30	
30	2, 1/2 "	5.96	1.79	
30	3 "	6.34	1.90	
30	3, 1/2 "	6.72	2.01	
85	4 "	7.10	6.04	
70	4, 1/2 "	7.48	5.24	
20	5/8 x 5 "	7.86	1.57	
75	5, 1/2 "	8.24	6.18	
100	6 "	8.62	8.62	
85	3/4 x 2 "	7.70	6.55	
50	2, 1/2 "	8.20	4.10	
50	3, 1/2 "	9.20	4.60	
10	3 "	8.70	.87	
18	4 "	9.70	1.75	
23	7/8 x 4 "	14.00	<u>3.22</u>	
			111.41	
		Less 65%	<u>72.42</u>	38.99
22	3/16 Round Iron	4.60	1.01	
155	1/4" Square "	3.00	4.65	
25	3/8" " "	2.60	.65	
53	5/8" " "	2.30	1.22	
194	3/4" " "	2.20	4.27	
118	1" Round Iron	2.10	2.48	
276	1, 1/4 " "	2.10	5.80	
142	1, 1/2 x 1, 3/4 Com. Iron	2.40	<u>3.41</u>	
		Forward	8.20	23.49
		Amount forward	1.01	192.99

Cliffs Shaft

IRON & STEEL (Continued)

	Bro't For'd.	192.99
218 1,1/8" Square Iron	210	4.58
116 1,1/4" x 2,1/2 Sq. Iron	2.40	2.78
337 3" Sq. Iron	2.60	10.06
133 3/4 x 4 Common Iron	2.10	2.79
248 1,1/4 Sq. Iron	2.10	5.21
100 1/2 x 2	2.10	2.10
91 1,1/2" Round Iron	2.10	1.91
97 1/4 x 2" Angle Iron	2.80	2.72
453# 1 Channel 12 x 3 x 15	1.485	6.80
253# { 1 "T" beam 9' long 4,1/2 x 8"	.02	5.16
253# { " " 2' " 4,1/4 x 3"	.02	5.16
253# { " " 2' " 4,1/4 x 3"	.02	5.16
112# 1" x 6" Charcoal Iron	.02	2.24
323# 1,1/8" Steel from Volunteer	.01	3.28
86# 1/2 Lowmoor		
600# 5/8 "		
45 1 "		
53 1,1/8 "		
60 1,1/4 "		
156 1,3/8 "		
560 1,1/2 "		
494 1,5/8 "		
263 1,3/4 "		
327 1,3/4 x 1,1/4 2644#	.04	211.52
34 1/2 Round Swedes Iron		
87 5/8 "		
155 3/4 "		
125 7/8 "		
40 1,5/8 "		
138 2 " 579#	.04	<u>23.16</u>

Cliffs Shaft.

I R O N & S T E E L (Continued)		Bro't for'd		477.30
106	1" Rd. Cold Rolled Shaftg.			
152	1,1/4 "			
97	1,1/2 "			
292	1,3/4 "	647#	5.25	33.97
		Less 40%		<u>13.59</u> 20.38
90	7/8 Sq. Tool Steel		.125	11.25
55	1" "		.125	6.87
30	3/4 x 1 Lathe "		.125	3.75
16	5/8 Rd. Mild Steel (Com or Soft)		2.25	.36
16	3/4 "		2.25	.36
100	1 " "		2.25	2.25
460	1,1/4 "		2.25	10.35
177	1,1/2 "		2.25	3.98
408	1,5/8 "		2.25	9.18
799	1,3/4 "		2.25	17.98
121	2,1/4 "		2.25	2.72
132	1,1/4 x 5 "		2.25	2.97
310	2,1/2 x 3,1/8 "		2.25	6.98
280	1,5/8 x 3 "		2.25	6.30
172	1,3/4 x 3,1/2 "		2.25	3.87
100	7/8 Cr. Chuck Bolts		.0575	5.75
53	1/16 x 1,7/8 Spring Steel		.10	5.30
173	1/16 x 2,1/8 "		.10	<u>17.30</u>
	Total			117.51 117.51
	Forward			615.19

Cliffs Shaft.

I R O N & S T E E L (Continued)

	Bro 't For 'd	615.19
6# 3/8" Sq. Iron	2.60	.16
71# 1/2" Sq. Iron	2.40	1.70
60# 5/8" "	2.30	1.38
17# 3/4" "	2.20	.37
22# 1,1/2" "	2.10	.46
86# 2" "	2.30	1.98
81# 3,1/2" "	2.60	2.11
116# 3/4" Round Iron	2.20	2.55
38# 2" x 1/2" "	2.10	.80
20# 3/4 x 2,1/2 "	2.10	.42
3# 5/8" Sq. Mach. Steel	2.40	.07
204# 2,1/2Rd. "	2.50	5.10
98# 2 " "	2.30	2.25
23# 1,1/2 " "	2.30	.53
3# 1/2" Rd. Copper Rod	.30	.90
51# 1/2" Round Iron	2.40	1.22
26# 3/8" "	2.60	.68
130# 5/8" "	2.30	2.99
107# 1" "	2.10	2.25
30# 1,1/4" "	2.10	.63
44# 1,1/2" "	2.10	.92
40# 1/8 x 2" Com Iron	2.37	.94
478# 3/8 x 3 "	2.10	10.04
30# 1/2 x 1,1/2 "	2.10	.63
102# 1/2 x 2,1/2 "	2.10	2.14
117# 3/4 x 3" "	2.10	3.72
122# 5/8 x 3" "	2.10	2.56
91# 1/4 x 3" "	2.20	<u>2.00</u>
Total forward		51.50
Forward		666.69

Cliffs Shaft

I R O N & S T E E L (Continued)

		Bro't For'd	666.69
52#	2,1/4" Round Iron	2.30	1.20
98#	1" x 6" "	2.20	2.16
26#	1 pc. Angle Iron 3/8 x 3"	2.30	.73
78#	1,1/8" Round Lowmoor Iron	.08	6.24
70#	1,1/2 " "	.08	5.60
29	1,3/8 " "	.08	2.32
70#	1" " Swedes Iron	.04	2.80
48#	2" " "	.04	1.92
53#	2,3/4" Sq. "	.04	2.12
123#	4" " "	.04	5.12
6#	7/8" Sq. Steel Mild	2.25	.14
54#	3,1/2 x 1,3/4 "	2.25	1.21
62#	1,3/4 Rd. " S. M.	2.30	1.43
233#	3,1/4 " " "	2.40	5.71
47#	2 x 1,1/2 H! B. Steel	2.40	1.13
61#	1,1/8" Cascade Steel	.01	.61
28#	1 pc. Angle Iron 2 x 1/4	1.75	.49
30#	3,1/2 x 1" Swedes Iron	.04	1.20
1409#	1,1/4" Drill Steel	6.06	85.38
112#	3,1/4 Sq. Sledge Steel	.0375	9.80
482#	3/8 Tank Iron	2.60	12.53
365#	1/2 " "	2.60	9.49
92#	Assorted Burden Rivets	.04	3.68
29#	7/8" Round Swedes Iron	.04	1.16
23#	3/4" " "	.04	.92
15#	2,1/2 x 3/4 " "	.04	.60
17#	2,1/2 x 1/2 Mach Bolts	4.12 65%	<u>.25</u>

Total forward

165.94

832.63

Cliffs Shaft.

I R O N & S T E E L (Continued)

Bro't For'd

832.63

25	5/8 x 2, 1/2	Mach Bolts	5.96	65% off	.52
5#	1/4"	Sq. Nuts Blank Blank	.05		.25
7#	3/8"	" " "	.05		.35
81#	5/8"	" " "	10.00	4.85 off	4.17
94#	1" x 1, 1/2 x 1, 1/2	Ck. Nuts Blank	11.50		10.81
162#	1, 1/8 x 1, 1/2 x 1, 1/2	"	11.50		18.62
⁸⁰ 18#	7/8"	Square Nuts, tapped	10.00 - 4.65		4.28
			12.50		
13#	1" x 1, 1/2 x 1, 1/2	Ck. nuts tapped			1.63
48#	1, 1/8"	" " " "	.125		6.00
7#	5/8"	Square Nuts	10.50 - 4.65		.41
198#	1/2"	Hex. Nuts Blank	14.00 ÷ 5.25		17.32
191#	5/8	" "	12.50	"	13.85
171#	3/4	" "	11.40	"	10.52
23#	1"	" "	10,90	"	1.30
193#	1, 1/2	" " H.	10.30	"	9.74
2#	1/2"	" " Tapped	15.00 - 5.05		.20
22#	5/8"	" " Keg."	7.10		1.56
21#	3/4"	" " " "	5.40		1.13
74#	1"	" " " "	11.50 - 5.05		4.77
35#	1, 1/8	" " "	12.50	"	2.86
8#	1, 1/4	" " "	12.00	"	.56
58#	1, 1/2	" " "	^{13,00} 15.60	"	^{4,84} 2.53
24#	2"	" " "	15.60		2.53
8#	9/16	" H. P. Blank	12.50 - 5.25		.53
33#	7/8	Chuck Nuts tapped	.14		11.62
12#	1, 5/8	Hex. " "	14.10 - 5.05		1.09
21#	1, 7/8	" " "	15.00 - 5.05		2.19
61#	Mach. Steel	for pistons	2.90		<u>1.77</u>

134.87

Total For'd

967.50

Cliffs Shaft.

O I L, G R E A S E & C A N D L E S.

420	Boxes	17640#	Candles	.0725	1278.90
38540		617#	Moonshine-Cakes	.065	40.10
169	Gals.		Cylinder Oil	.23	38.87
88	"		Black "	.095	8.36
67,1/2	"		Kerosene "	.105	7.08
53,1/2	"		Red Engine Oil	.13	6.95
43	"		Lard Oil	.90	38.70
58	"		Air Cylinder Oil	.29	16.82
50#			Axle Grease	.02	1.00
75#			Albany Compound	.16	12.00
45#			Cable Shield	.08	3.60
127#			No. 2 Cup Grease	.045	5.71
			No. 6 "	.085	<u>7.28</u>
Total Oil, Grease & Candles					1458.09

Cliffs Shaft.

MACHINERY SUPPLIES.

44'	1/4"	Black pipe	.055	2.42	
28, 1/2'	3/8"	"	.055	1.57	
38, 1/2'	3/4"	"	.115	59, 1/2-5% 4.42	3.74
393'	1, 1/4"	"	.225	88.42	
39, 1/2'	1, 1/2"	"	.27	10.67	
20'	2, 1/2"	"	.575	11.50	
13' 4"	3, 1/2"	"	.95	12.67	
10' 5"	4"	"	1.08	66, 1/2-5% 11.25	
				134.51	42.81
18, 1/2'	1"	Extra Heavy pipe - 35%			2.65
21, 1/3'	2"	" "	23.75		5.07
30'	2	Lengths 15" pipe flanged old			
1'	1, 1/2 x 2"	Reducer	.45	.45	
1'	2 x 2, 1/2	"	.70	.70	
				1.15	
		Less 75-5%		.87	.29
11	1/2"	Bushings	.04	.45	
10	3/4"	"	.05	.50	
20	1	"	.06	1.20	
19	1, 1/4"	"	.07	1.33	
17	1, 1/2"	"	.09	1.53	
86	2"	"	.14	12.04	
17	2, 1/2"	"	.21	3.57	
4	3"	"	.30	1.20	
3	4"	"	.50	1.50	
11	5"	"	.93	10.23	
5	6"	"	1.25	6.25	
1	10"	"	3.75	3.75	
		Less 75-5%		43.54	10.34
		Forward			64.40

Cliffs Shaft.

MACHINERY SUPPLIES.

		Forward		64.40
5	3/4" Iron Stop Cocks	1.05	plain	5.25
6	1" " "	1.30	"	7.80
5	1,1/4" " "	1.60	"	8.00
4	1,1/2" " "	1.95	"	7.80
3	2 " "	2.70	"	<u>8.10</u>
		Less 75%		36.95 9.24
10	1" Brass plug Iron Stop Cocks	.6160		6.16 6.16
3	1/4" Couplings	.05		.15
9	1/2" "	.07		.63
43	3/4" "	.10		4.30
56	1" "	.13		7.28
25	1,1/4" "	.17		4.25
20	1,1/2" "	.21		4.20
47	2" "	.28		13.13
7	3" "	.60		4.20
5	6" "	2.40		12.00
1	7" "	3.25		3.25
4	8" "	4.25		17.00
7	12" "	10.00		<u>70.00</u>
		Less 70-5-2,1/2%		140.39 39.01
2	1" Crosses	.27		.54
1	1,1/2" "	.53		.53
1	2,1/2" "	1.30		1.30
1	3 " "	2.00		2.00
2	4" "	3.15		6.30
2	5" "	5.50		<u>11.00</u>
		Less 75-5%		21.67 5.12
		Forward		123.93

Cliffs Shaft.

MACHINERY SUPPLIES. (Continued)

		Forward		123.93
12	1/2" Cast Elbows	.06	Less 70-10%	.20
9	3/4" Mall	.15	75%	.34
1	1" Cast Elbows	.105	70-10%	.10
2	1/4, 1/4" "	.16	"	.32
2	1/4, 1/2" "	.20	"	.40
2	2, 1/2" "	.50	"	1.00
1	4" "	1.20	"	1.20
1	5" "	2.00	"	2.00
6	7" "	4.70	"	28.20
1	8" "	6.75	"	6.75
1	12" "	20.00	"	<u>20.00</u>
			Less "	59.97 16.19
5	1/4" Mall Elbows	.06 ⁴	75%	.20
8	3/8 "	.06	"	.48
12	1/2" "	.10	"	1.20
4	1 "	.22	"	.88
2	2" "	.50	"	1.00
2	1/2" 45d "	.07	"	<u>.14</u>
			Less "	3.90 .97
1	3/4" 45d Cast Elbows	.10	70-10%	.10
1	2, 1/2" "	.60	"	.60
1	3" "	.90	"	.90
1	4" "	1.45	"	1.45
3	5" "	2.50	"	<u>7.50</u>
			Less "	10.55 2.84

Forward

144.47

21

M A C H I N E R Y S U P P L I E S S (Continued)

			Forward	144.47
1	1/4"	Plugs	.02	.02
2	3/8"	"	.02	.04
1	1/2"	"	.02	.02
15	1"	"	.04	.60
8	1,1/4"	"	.05	.40
18,	1,1/2"	"	.07	1.26
5	2"	"	.10	.50
6	2,1/2"	"	.13	1.08
5	3"	"	.25	1.25
1	4"	"	.42	.42
10	5"	"	.88	8.80
1	10"	"	3.75	3.75
1	12"	"	4.25	<u>4.25</u>
Less 75-5%				22.39 5.32
5	1/2"	Close Nipples	.05	.25
19	3/4"	Long "	.07	1.33
11	1"	Close "	.06	.66
7	1,1/4"	Long "	.12	.84
3	1,1/2"	" "	.15	.45
3	2"	" "	.19	<u>.57</u>
75-10%				4.10 .92
2	2"	Close Nipples	.13	.26
6	2,1/2"	"	.28	1.68
5	3"	Long Nipples	.50	2.50
9	3"	Close Nipples	.35	3.15
1	4"	Long "	.78	.78
7	5"	"	1.40	<u>9.80</u>
Forward			18.17	
Total Forward				150.71

Cliffs Shaft.

M A C H I N E R Y S U P P L I E S. (Continued)

			Bro't For'd	18.17	150.71
3	5"	Close Nipples	1.05	3.15	
5	6"	"	1.33	6.65	
6	6"	Long "	1.75	10.50	
5	7"	Short "	2.15	10.75	
1	12"	"		1x50	1.50
1	12"	Long "		1x50	1.50
			Less 75-10%	49.22	11.07
6	1/4"	Mall. Tees	.08	.48	
40	3/8"	"	.08	3.20	
67	1/2"	"	.09	6.03	
40	3/4"	"	.12	4.80	
7	1"	Cast "	.15	1.05	
6	1,1/4"	" "	.23	1.38	
5	1,1/2"	" "	.29	1.45	
15	2	" "	.41	6.15	
3	2,1/2"	" "	.73	2.19	
11	5"	" "	3.00	33.00	
2	6"	" "	4.00	8.00	
24	1/2"	Cast "	.09	2.16	
19	3/4"	" "	.12	<u>2.28</u>	
			Less 70-10%	72.17	19.48
1	1/2 x 1/2 x 1/4	Reducing Tees	.10	.10	
2	3/4 x 3/4 x 3/8	"	.14	.28	
4	3/4 x 3/4 x 1/2	Mall. "	.14	.56	
1	1 x 1 x 1/2	"	.17	.17	
4	1 x 1 x 3/4	"	.17	.68	
5	1,1/2 x 1,1/2 x 1/2	"	.33	1.65	
1	2,1/2 x 2,1/2 x 2	"	.83	<u>.83</u>	
			23	Forward	4.27
					184.26

Cliffs Shaft.

M A C H I N E R Y S U P P L I E S. (Continued)

		Bro 't For'd		4.27	184.26
1	2,1/2 x 2 x 3	Reducing tees	1.25	1.25	
5	6 x 6 x 4	"	4.60	23.00	
1	8 x 8 x 6	"	11.25	11.25	
2	12 x 12 x 4	"	33.50	<u>67.00</u>	
		Less 75%		106.77	26.69
9	1/4" Mall. Unions		.18	1.62	
24	3/8" "		.20	4.80	
18	1,1/2" "		.22	3.96	
4	3/4" "		.27	1.08	
4	1" "		.33	1.32	
4	1,1/2" "		.58	2.32	
4	2" "		.75	3.00	
13	2,1/2" "		1.55	<u>20.15</u>	
		Less 75-10%		38.25	8.17
5	3" "	" " 5%	2.10	10.50	2.24
3	1" Caps		.12	.36	
1	1,1/4" "		.16	<u>.16</u>	
		Less 75-5%		.42	.09
2	1,1/4" Return Bands		.28	.56	
1	2" "		.57	.57	
44	Flange Unions 1,3/4"		.46	^{20.24} 25.00	
33	1,1/2" Flange Unions		.78	25.74	
16	2" "		1.00	16.00	
18	2,1/2" "		1.25	22.50	
2	4" "		2.10	4.20	
11	5" "		3.15	34.65	
40	1,1/4" "		.64	25.60	
1	7" "		5.50	5.50	
1	1" "		.52	.52	
5	12" "		16.00	<u>80.00</u>	
		Less 70 - 10%		236.08	63.74
		Total Forward			285.19

Cliffs Shaft.

M A C H I N E R Y S U P P L I E S. (Continued)

				Bro 't For 'd	285.19	
2	1/4"	Stand.Globe Valves, Brass	.72		1.44	
1	3/4"	" "	1.26		1.26	
4	1"	" "	1.80		7.20	
4	1,1/4"	" "	2.52		10.08	
3	1 1/2"	" "	3.50		10.50	
1	2"	" "	5.30		<u>5.30</u>	
				Less 70 - 5 %	35.78	10.20
4	3/4"	Brass Angle Valves	1.26		5.04	
3	1"	" "	1.80		5.40	
5	1,1/2"	" "	3,50		17.50	
2	2"	" "	5.30		<u>10.60</u>	
				Less 70 - 5%	38.54	10.98
1	1,1/4"	Stephens Gate Valve, Brass	3.50		3.50	
2	1,1/2"	" "	5.00		<u>10.00</u>	
				Less 75%	13.50	3.37
3	2,1/2"	Iron Body Gate Valve Ludlow			4.88	14.61 41.61
1	4"	" " " Murdock	20.00 - 50 - 7,1/2"		9.25	
5	2,1/2"	" " Globe Valves	7.35 - 75-10%		8.25	
1	3"	" "	9.80 - 75-10%		<u>2.20</u>	19.72
3	3/8"	Brass Pet Cock	.50		1.50	
14	1/2"	" "	.60		<u>8.40</u>	
				Less 75%	9.90	2.47
3	3/4"	Brass Check Valves	1.15		3.45	
14	1"	" "	1.60		22.40	
10	1,1/4"	" "	2.25		22.50	
2	1,1/2"	" "	3.15		^{6,30} <u>3.60</u>	
1	2"	" "	4.75		<u>4.75</u>	
				Less 70-5%	59.40	16.93
				3	Tot al Forward	363.47

Cliffs Shaft.

M A C H I N E R Y S U P P L I E S (Continued)

Bro 't For 'd

363.47

2	3/4"	Brass Stop Cocks	1.70	3.40	
3	1,1/4"	" "	3.70	11.10	
3	1,1/2"	" "	4.85	14.55	
3	2"	" "	7.30	<u>21.90</u>	
		Lesss 75-10%		50.95	11.46
2		Self Closing Brass bibbs for pipe	.85	1.70	
186'		Split pipe covering 2,1/2" + frt.	.22	44.52	
3	18"	Spiral Spring Cage	3.25	9.75	
5	9"	" Crusher	1.75	8.75	
2	8"	" Tram & Crusher	.75	1.50	
1		Gear Wheel Sample Crusher		<u>1.40</u>	67.62
2	2"	Flue Cleaners	1.00	2.00	
2	18"	Sheave Spoke	2.50	5.00	
1	15"	Sheave Solid	3.00	3.00	
1144#	12"	Mang. Steel Pump Rod Wheels	.0925	105.82	
2	18"	Cast Iron Crusher Car 36" 4#	2.50	9.10	
4	16"	Mang. Steel Pump rod wheels	7.65	30.60	
1	1370#	Casting for car pump	2.75	36 68	
1	2"	Inspirator		2.50	
2		Fire door Liners 76#	2.40	1.82	
86#	12"	Self Oiling C. P. Wheels	2.40 per 100#	2.06	
9	14" x 3"	Car Wheel 875#	2.90	"	25.38
2		Cylinder Heads <i>Hodge</i>		79.55	
10	5/8 x 14	W. G. Glasses	.12	1.20	
1	3/4" x 13"	"	4.80 75%	1.20	
100'		Air Hose Blue Jacket	.33	.33	
1'	12" long	3/8" Dia. Spring wheel	1.50	<u>1.50</u>	<u>308.74</u>
		Total For 'd.			751.29

Cliffs Shaft.

M A C H I N E R Y S U P P L I E S. (Continued)

		Bro 't For 'd		751.29
3	No. 3 Rubber Buffers	.50	1.50	
3	" 1/4 "	.70	2.10	
10#	10" x 1" Condenser Rubber Valves	.90	<u>9.00</u>	12.60
5#	3/8" Gam. packing Spiral	1.20	55% 2.75	
12#	110z. 7/16" Garlock "	1.20	" 6.98	
30#	3/8" Hard Rubber Packing	.45	13.50	
20#	1/2" " "	.45	9.00	
10#	5/8" " "	.45	4.50	
24#	1" " "	.42	10.08	
57#	1/16 Sheet "	.15	8.55	
15#	1/8" " "	.15	2.25	
12#	1/16" Rainbow Packing	.45	5.40	
21#	1/8" " "	.45	9.45	
13#	3/4" Asb. packing German	.70	9.10	
4#	" Wicking	.28	1.12	
3,1/4#	" Sheet packing	.08	.26	
6	3/4" Eclip. Gaskets	.64	3.84	
96#	Vulc. Fibre	.50	48.00	
33#	Soft Rubber Pump Valves	.75	24.75	
8,1/4#	Hard " "	.75	6.19	
33#	Iron "	2.40	.79	
12,1/4	3/8" Empire Packing	.26	3.18	
6	1/2" " "	.26	1.56	
18,3/4	5/8" " "	.26	4.87	
5	3/8" Eureka Packing	.40	2.00	
27	1/2" " "	.40	10.80	
12	3/4" " "	.40	4.80	
23	1" " "	.40	9.20	
8,1/2#	7/8" Asb. Metallic	.60	<u>5.10</u>	
			208.02	
			<u>31.20</u>	
Less 15%				
14#	Hand hole crabs	2.40	176.82	
			<u>.34</u>	
				<u>177.16</u>
Total For'd				941.05

Cliffs Shaft

MACHINERY SUPPLIES (Continued)

Bro't For'd

941.05

66'	12" Heavy Lea Belt	1.75	115.50	
141#	# Caps for Crusher Car	2.90	4.09	
90#	Caps for Dump Rod Carrier Wheels	2.90	2.61	
1#	Water G. Gaskets	1.00	1.00	
5#	# Graphite	.18	.90	
1	Length Sewer Pipe Y. 6"	.71	.71	
1	" " "	.20	.20	
1,1/2	Bbls. Cement	1.20	1.80	
206#	Caps for self oiling wheels	2.75	<u>5.66</u>	132.47
9'	1" Mo. Pipe Covering	.23	2.07	21.07
24'	2" " "	.27	6.48	
21'	2,1/2" " "	.31	6.51	
144'	3" " "	.36	51.84	
3'	4" " "	.44	1.32	
18'	5" " "	.50	9.00	
3'	6" " "	.58	<u>1.74</u>	
	Less 60-10%		78.96	28.46
113#	Leg Flanges Rough	.155	17.52	
89#	" Sleeves "	.155	13.79	
51#	Front Leg Castings Rough	.155	7.90	
2,3/4#	Soft Rubber #5 Knowles P. Valves	.75	2.05	
3#	Camp " "	.75	2.25	
14#	Emery Powder	.10	<u>1.40</u>	<u>44.91</u>
				1146.86

Cliffs Shaft.

MACHINERY SUPPLIES (Continued)

		Bro't For'd.	1146.86
665#	Shell Slide Castings, Rough	.03	19.95
223#	Cylinder "	.03	6.84
5	Steel Pistons "	3.80	19.00
2#	Pawl Spring Steel "	1.50	1.00
6	Chucks	5.00	30.00
21	1,1/2" Chuck Bushings, Rough	1.00	21.00
3	1,1/4" " "	1.00	3.00
5	Feed Screws Handles Forged	1.50	7.50
123#	Piston Ring Castings	2.90	3.57
14	Pipe Legs	1.00	14.00
37#	Lower Heads	.0425	1.58
134#	Shell Castings	.05	6.70
2,1/6'	Piston <i>ring tubing</i>	1.00	2.17
16#	Leg Hook Bolts	1.00	16.00
7	Pr. Piston Packing Rings	2.58	18.06
2	" " " Springs	.08	.16
3	Upper Heads Reg.	.75	2.25
9	Ratchet Boxes	2.75	24.75
5	" " Wheels	3.50	17.50
5	Pawls Complete	1.00	5.00
13	" Springs	.08	1.04
12	" Bolts	.25	3.00
7	Cylinder Buffer Yokes Iron Wrt.	.50	3.50
2	" "	.70	1.40
1	Chuck	7.00	7.00
10	Chuck Bolts	.50	5.00
6	" Keys	.35	2.10
2	Steam Chests	1.50	3.00
6	Carbon Steel pawls Rough	.50	3.00
7	Slide Valves	.75	5.25
			<u>254.32</u>
Total Forward			1401.18

Cliffs Shaft.

M A C H I N E R Y S U P P L I E S. (Continued)

	Bro 't For 'd	1401.18
5	Slide Valve Seats	1.75 8.75
12	Rocker Pins	.25 3.00
18	Steam Chest Studs	.25 4.50
9	Feed Screw Handles Forged	1.50 13.50
4	Slide Rods	.30 1.20
6	Feed Screw Washers	.10 .60
7	Feed Screws	2.50 18.50
21	Standards	.50 10.50
5	Cross Heads forged	.50 2.50
8	Jamb Nuts	.25 2.000
7	Feed Nuts	1.50 10.50
3	Packings Leather Cup	.40 1.20
6	Camps Regular	6.00 36.00
7	Hook Bolts reg. Clamp	2.00 14.00
3	Left Side Adj. Tri.	3.20 9.60
2	Right & "	3.20 6.40
6	Hook Bolts "	.71 4.26
23	Front Leg. Castings	1.50 34.50
20	" Flanges adj.	1.10 22.00
10	Rear Tri Bolts	40 4.00
9	Front Tri. Bolts affj.	.40 3.60
9	Sq. FT. Rawhide for lacing	.25 2.25
3	Pipe Legs	1.00 3.00
10	1, 1/2" Double Strength pipe	.235 2.35
26	Leg Sleeves	.85 22.10
1	2, 1/2" Brass Suction Strainer for Fire Hose	1.50
3	Set Screws	.25 .75
		<u>245.48</u>

Total For 'd

1646.66

Cliffs Shaft.

M A C H I N E R Y S U P P L I E S. (Continued)

	Bro 't For 'd		1646.66
161# Mine Coal Axle Boxes)			
" Dump " }	.03	4.83	
37# 1/8" Sheet Copper	.35	12.95	
13# 7/16 x 3/8 Garlock Packing	.35	7.15	
2# 1" Empire Packing	.26	.52	
6# 3/4" " "	.26	1.56	
2# 1/2" Square Rubber Packing	.45	.90	
2# 1/2" Flat Rubber Back "	.45	.90	
542# 15" Toggle Hodge			
323# 16" " "			
1084# 14, 1/2" " "			
254# 13, 1/2" " "			
530# 13, 1/2" " Holly			
540# 15, 1/2" " "			
1104# 18" " "			
372# 18" " Hodge			
700# 17" " Holly			
260# 14" " "			
265# 14" " Hodge			
5974#	.03	<u>179.22</u>	206.03
140 E. & H. Fire Bricks	32.00	4.48	4.48
19 '8" 3" Black Pipe	.755	14.85	
57 '4& 4" " "	1.08	61.83	
76 ' 8" 5" " "	1.45	111.17	
154 ' 6" " "	1.88	<u>298.52</u>	
	Less 66, 1/2-5-25%	477.36	<u>113.95</u>

Total Forward 3) 1973.12

Cliffs Shaft.

MACHINERY SUPPLIES (Continued)

Bro't For'd.

1973.12

1	Cast Iron Head Block Hodge 2296#	.03	68.88
2	Mang. Steel Jaw Plates	} 7380 at .10 ÷ frt. 36.14	774.14
2	" " Face " "		
2	" " " Holly	} 7855 at .10 ÷ frt. 33.95	819.45
2	" " Jaw " "		
1	Cast Iron Jaw Face Plate Holly 2085		73.03
1	" face plate Holly 1912	.03	57.36
1	" Jaw " Hodge 1894	.03	56.82
1	" Face " Holly 1912	.03	57.36
1	" Tail Block Hodge 1400	2.40	9.60
4	Steel Toggle Strips Holly 1092	.05	71.80
4	" " " 4402	.05	22.00
2	" Bearings Hodge	540 ¹²⁵	.09 13.05
5	" " " 1365#	.06	81.90
2	Cast Iron Bottom Side liners Holly	1 ²⁷⁰	.03 45.45 ^{8.10}
3	Steel " " 437#	1.04 ^{.104}	45.45
4	" " " Hodge 1425#	1.04 ^{.104}	13.00
2	C. I. Side liners 410#	.03	12.30
1	" " 372#	.03	11.16
1	Steel " 301# 372#	1.04 ^{.104}	38.69
9	" top "	1.04 ^{.104}	51.48
4	" side " 820#	1.04 ^{.104}	85.28
1	C. I. Top Side Liner 380#	.03	11.40
1	Steel " " 390#	.104	85.28 ^{40.56}
1	New Shaft for Shaft Hodge		
1	8' Bicycle Sheave		65.00
1	3' C. I. " Hoisting Rope 268#	2.75	<u>7.37</u> <u>2495.18</u>

Total Forward ³⁷

4468.30

Cliffs Shaft.

MACHINERY SUPPLIES. (Continued)

Bro't For'd

4468.32

4	C. I. Sheaves(Hoisting rope) 1072#	2.75		29.48
1	Gear Wheel Rim in Segments			773.06
1	Steel pinion	256.00	12.60	268.60
1	7' Bicycle Sheave			35.00
1	Water Column			11.15
1232#	8# Grate Bars	2.40		29.57
1	Roll 274# Crusher Crone			6.58
12	14" x 3,1/2" Mine Car Wheels 1230#	2.90		35.07
9	Foot Boards	.90		8.10
2	Door for Crusher Chute	2.75		5.50
1	Plunger pole 1775#	2.75		48.81
2	12 x 40 Beams 17' long 1360 at	2.90	3.92	43.36
1	36" Sheave			4.00
1	3/4" Union	.27	.27	
3	1" "	.33	.99	
1	1,1/4" "	.46	.46	
2	1,1/2" "	.58	1.16	
1	1/2" Nipple	.04	.04	
8	3/4" "	.05	.40	
4	1" "	.06	.24	
7	1,1/4" "	.09	.63	
7	1,1/2" "	.10	.70	
9	2" "	.13	1.17	
1	2,1/2" "	.28	.28	
2	3" "	.35	.70	

Less 80%

7.04

1.41

~~XXXX~~

1300.29

Total Forward

5768.59

Cliffs Shaft.

MACHINERY SUPPLIES (Continued)

Bro't For'd

5768.59

4	3/4" Elbows	.03	.32	
7	1" "	.105	.74	
1	1,1/4" "	.16	.16	
3	1,1/2" "	.20	.60	
7	2" "	²⁸ .50	^{1.96} .50	
1	2 1/2" "	⁵⁰ .75	⁵⁰ .75	
1	2" 45d "	.23	.23	
1	Pr. 1/4 Flange Unions	.64	.64	
1	1,1/2" "	.78	.78	
11	2" "	1.00	11.00	
1	2,1/2" "	1.25	1.25	
3	3" "	1.50	<u>4.50</u>	
	Less 80%		23.48	4.70
1	1/2" Angle Valves	1.00	1.00	
1	1/2" Globe "	1.00	1.00	
5	3/4" " "	1.26	6.30	
5	1" " "	1.80	9.00	
1	1,1/4" " "	2.52	2.52	
3	1,1/2" " "	3.50	10.50	
5	2" " "	5.30	26.50	
1	2,1/2" " " I. B.	7.35	7.35	
1	1/2" Bushing	.04	.04	
1	1" "	.06	.06	
3	1,1/2" "	.09	.27	
5	2" "	¹⁴ .21	^{1.70} .63	
	Less 80%		65.87	<u>13.17</u>

Total Forward

5786.46

34

Cliffs Shaft.

MACHINERY SUPPLIES. (Continued)

Carried For 'd

5786.46

1	1/2" Tee	.09		.09
2	3/4" "	.13		.24
5	1" "	.15		.75
7	1,1/4" "	.23		1.61
1	1,1/2" "	.29		.29
3	2" "	.41		1.23
1	1" plug	.04		.04
1	1,1/2" plug	.07		.07
5	2" "	.10		.50
2	2,1/2" "	.13		<u>.36</u>

Less 80%

5.18 1.04

Total Machinery Supplies

5787.50

B U I L D I N G M A T E R I A L .

920' 2" Hemlock	13.00	11.96
14070' 3" "	10.00	140.70
1 Pc. 10 x 6 Oak 9' } <i>365'</i>	.45	
4 & 10 x 16 " 16' } <i>34.00</i>	3.20	12.41
1 " 12 x 18" Washington Fir 432'	23.50	10.15
1036' 1x1/4 Maple	22.00	23.89
273' 2 " "	22.00	6.00
280' 3 " "	22.00	6.16
904' 5 x 5 " "	22.00	19.89
624' 5x8 " "	22.00	13.73
1000' Shingles	3.50M.	3.50
1 6' Fence posts	.125	.12
7 8' " "	.35	2.45
1 Pc. 10 x 12 x 21' pine 210'	18.75	3.94
1 " 10 x 12 x 18' " 180'	17.75	3.19
1 " 10 x 12 x 19' " 190'	17.75	3.37
5 " 10 x 12 x 20' " 1000'	18.75	18.75
1 " 10 x 12 x 9' " 90'	17.25	1.60
1 " 12 x 14 x 22' 8" " 317'	20.00	6.34
1 " 12 x 12 x 21' " 252' <i>252'</i>	18.75	4.72
1 " 10 x 12 x 20' " 200'	18.75	3.75
2 " 12 x 12 x 12' " 144'	17.75	2.56
1 12 x 12 x 31 pine pump Rods	9.35	9.35
2 12 x 12 x 34 " "	9.35	18.70
1 12 x 12 x 36 " "	9.35	9.35
1 12 x 12 x 41 " "	9.35	9.35
2 Telegraph poles	.35	<u>.70</u>
Total Forward		346.63.

Cliffs Shaft.

BUILDING MATERIAL (Continued)

		Amount Forward	346.63
5	Pcs. 1 x 6 x 12' Oak	30' 0	
4	" 1 x 8 x 16' "	42' 8"	
2	" 2 x 8 x 12' "	32'	
1	" 2 x 12 x 6' "	12'	
2	" 4x 10 x 9' "	60'	
1	" 4 x 14 x 9' "	<u>42'</u>	
		218' 8"	34.00 7.43
	Fencing frame L. S. & I		3.48
146' 8"	4" x 8" x 5' Oak Car Stuff		34.00
96'	4" x 8" x 3' "		
163' 4"	4 x 5 x 7' "		
146' 8"	4 x 5 x 4' "		
21	3 x 3 x 4' "		
72	3 x 4 x 4' "		
28	3 x 4 x 2' "		
64	2 x 3 x 2' "		
63	3 x 3 x 7' "		
<u>12</u>	3 x 4 x 6' "		
8128"		34.00	27.63
	A Lot of Pine ceiling in.		
	Short pieces		2.00
	A Lot of Maple "		4.00
	" " Flooring		3.75
1	Roll of Roofing tin painted		3.20
1	5" x 6" x 6' Oak 15'	34.00	.51
2	3" x 4" x 6' " 12'	34.00	.41
5	Wagon Spokes	.06	<u>.30</u>
	Total		52.71
	<i>37</i> Total Building Materials Forward		399.34

Cliffs Shaft.

BUILDING MATERIAL.

Amount Forward

399.34
~~500.54~~

11	9 x 15	Window Glass	.14	1.54
22	12 x 14	"	.15	3.30
5	10 x 15	"	.17	.85
2	8 x 10	"	.08	.16
6	16 x 20	"	.30	1.80
4	14 x 22	"	.30	1.20
6	16 x 16	"	.30	1.80
14	12 x 16	"	.17	2.38
12	10 x 12	"	.10	1.20
26	Gals.	Raw Linseed Oil	.78	20.28
20	"	Roofing paint	.72	14.40
5	Sheets	corrugated Roofing	.78	3.90
2	Old panel	doors	1.00	2.00
10#	Putty		.03	.30
248'	Oak	8 x 12	33.50	8.31
1	Roll	building paper		.75
	Putty	paints		<u>.05</u>

Total Building Materials

64.22
463.56

Cliffs Shaft.

EXPLOSIVES.

950 Exploders	30.10	28.59
800 Caps	6.00	4.80
5400' Fuse	4.25	22.95
20# Battery Wire	.30	6.00
4000# 1,1/2 50% Anthony	.12	480.00
1350# 1,1/2 50% Ammonia	.015	<u>155.25</u>
		697.59

MINE TIMBER.

539 4' Ties	.10	53.90
37 3' "	1692	
282 6' "	2358	
262 9' "	768	
64 12' "	4929	
	.03	147.87
7085' poles	.01	70.85
8 10" ⁸ ulls 16' x 128'	.05	6.40
8 12" " 16' x 128'	.06, 1/2	8.32
36 14" " 16. x 576'	.09	51.84
18 16" " 16' x 288'	.09	25.92
12 12" " 14' x 168'	.065	10.92
26 14" " 14' x 364'	.09	32.76
2 12" " 8' x 16'	.065	1.04
1 16" " 8' x 8'	.09	.72
8995' 7' Split Lagging	.60	<u>53.97</u>
	Total Mine Timber	464.51

FUEL:

4158 1,1/4 - 3/4 - Slack.	Tons of Soft Coal	2.82	<u>11678 '96</u>
	Total		12841.96

Cliffs Shaft.

B A R N .

560#	Horse Shoes	4.25	23.80
3	Waggon Skeins 66#	.03	1.98
23	Fellers	.22	5.06
65	Spokes	.06	3.90
1	Hand Sleigh		.25
3	Hubs	.70	2.10
75#	Horse Shoes	4.25	3.19
2#	" Nails	.18	.36
1	Rim (wagon)		.25
6	Spokes (wagon)		.36
Total Barn			41.25

A N T I Q U A T E D .

1	XXXXXXXXXX		
12	Sand Pumps	.25	3.00
40	Prs. B. S. Tongs		30.00
34	Anvil tools		8.50
1	Old Vise		7.00
7	Scrapers	.15	1.05
1	Base Burner		1.00
1	Soft Coal Stove		.50
6	Gasalene Torches	1.5825	9.49

I R O N & S T E E L .

1326#	Bolt Ends	.01	13.26
210#	3/8" Half Round Iron		2.10
2 x 3/4	65# "		.65
4 x 2	255 B. S. "		
	826 W. H. "		10.81
3 x 2	158 B. S. "		
	645 W. H. "		8.03

40

Forward

39
95.21

Cliffs Shaft.

ANTIQUATED. (Continued)

MACHINERY SUPPLIES

	Bro't For'd	
		95. ³⁹ 21
9 3,1/2" Unions	.73	6.57
3 3,1/2" Couplings		
3 3,1/2" Flange Unions		
3,1/2" Nipples		
		<u>101.96</u>
	Less 100%	<u>101.96</u>
		0000.00
5 Shell Castings Rough 375#	2.40	9.00
2 Bugfer Yoke " 7#	2.40	.17
8 Lower Heads " 116#	2.40	2.78
7 Steam Chests " 55#	2.40	1.32
5 Valve Seats " 53#	2.40	1.27
6 Rat chet Boxes" 89#	2.40	2.14
10 Shell Slides 119#	2.40	2.86
33 Steel Bushings 216#	2.40	5.18
12 Clamps 309	2.40	7.42
3 Tripod Slides 60#	2.40	1.44
1 Cylinder Casting 85#	2.40	2.04
5 Upper Heads 40#	2.40	.96
2750# #3 Tripod Weights	2.40	66.00
1021# Wheelbarrow Wheels	2.40	24.50
165# " " Boxes	2.40	3.96
330# Rear Skip Wheels	2.40	7.92
22# Brass Rotating Nuts	.27	<u>5.94</u>
	Amount For'd	144.90

Cliffs Shaft.

A N T I Q U A T E D . (Continued)

	Amount Forward	144.90	
11'	Galv. Spiral pipe 3"		111.73
34'	3" " "		10.66
31'	4" Blk "		8.97
105'	3" " "		
7	Ring Lower Heads	2.75	19.25
1	" "	1.00	<u>1.00</u>
			186.51
	Less 100%		<u>186.51</u> 0.00
120#	Upper Heads	2.40	2.88
150#	# 3 Steam Chests Rough		3.60
400	" Adj. Shell Slides Rough		9.60
75#	" " Shell Steel "		1.80
55#	" Valve Seats "		1.32
10	Adj. Shell Slides "		.24
5	Cylinder Buffers Rub. Finished	.35	1.75
560#	Bushings Rough	2.40	13.44
130#	Cylinder Castings	2.40	3.12
6	Pr. # 3 pist pcking rings	2.57	15.48
41#	Upper Heads	2.40	<u>.98</u>
			54.21
	Less 100%		<u>54.21</u> 00.00

42

Cliffs Shaft.

S C R A P .

2	Tons of borings	3.00	6.00	
1, 1/2"	" - Burnt Scrap	3.00	4.50	
5	" Mixed Scrap	8.00	40.00	
6	" Mang. Steel plates	3.00	18.00	
588#	Crusher Boxes Brass	.07	41.16	
129#	Valves	.07	9.03	
160#	Valves Spring	.05	8.00	
10#	" "	.05	50	
210#	Brass Borings	.05	10.50	
351	Valves Boxes & Odds & Ends	.07	24.57	
132	" " " "	.07	9.24	
116	" " " "	.07	8.12	
317	Brass Spg. Wire	.05	15.85	
99	Brass box Hoist Engine	.07	6.93	
24	" Tubes	.07	<u>1.68</u>	
			2.75	
			11.16	204.08
			1.18	
			1.18	
			1.18	
			1.18	
			1.18	
			1.18	
			1.18	

Cliffs Shaft Mine

MINE EQUIPMENT

DIAMOND DRILLS.

1	1, 1/2" Core Barrel	8' long	5.90
1	1, 5/8" " "	8' "	5.90
7, 1/2'	2" Casting pipe		.89
9	1, 3/4" Blank Bits		2.67
1	Safety Clamp Cleveland		6.24
1	12" Sheave		1.18
2	4" Clamps		.59
2	6" Clamps		.70
1	#1 Cameron Pump	Tilden	29.52
1	#2 " "	Shop	29.52
1	#4 Vise	B. Shop Office	2.63
1	Hoisting Clamp		.14
11	Core Lifters		<u>24.06</u>
			109.94
		Less 100%	109.94

RECORD

2	#4 , 3/4" Diamond Drills	
1	Small " "	
1	Locomotive Boiler on Wheels	Swanzy
	Repaired Apr. 30, 1901	172.23
126'	1, 5/8" Drill Rods at Cleveland	
165'	1, 5/8" " "	
335'	1, 5/16" " "	
3 1/2'	2" Casting Pipe	
5	1, 3/4" Blank Bitts	
4	1, 15/16 Core Barrels	
2	Core Lifters	
3	&	Complete
10	"	Couplings
12	"	Springs
1	Feed Screw	

Cliffs Shaft.

M I N E E Q U I P M E N T

RECORD (Continued)

- 4 Gear Wheels
- 1 Diamond Drill Frame Wheels & Axles (scrap)

POWER DRILLS

10	#3, 1/4 Rand Drill & Tripods				
	New 1898	320.00 - 20%	256.00		
	Frts.		6.34		2623.40
6	#3, 1/4 Rand Drills and Tripods New				
	1899 from Hard Ore in Exchange for				
	6 New 1898 #3 Drill Prem. for Ex.		79.62		
	1898 price 243.58 Each plus	13.27	256.85		1541.00
15	#3 1/4 Rand Drills and Tripods New Oct. 1899 from factory				
			3375.00		
	Frts		96.12		3471.12
1	#3 Rand Drill Built in Cliffs Shaft				
	Shops in 1899				<u>114.08</u>
					Total 7749.60
					<u>7749.60</u> 0.00

(20% in 1901)

- 14 Old No3 Rand Drills and Tripods
- 25.00 in 1899, 140.00- 10.00 in 1900
- Less 100%
- 1 Bellock Drill Tripod
- 1 " Manouch
- 1 #13 Rand Slugger No Shell or Tripod

W

Cliffs Shaft.

M I N E E Q U I P M E N T (Continued)

CARS. SKIPS & DERRICKS.

40	2, 1/2 Ton Wood Tram Cars		944.80
1	1, 1/2 " "	Col tram	2.95
3	Platform Cages		177.15
1	3/4 Ton Buckets	Salisbury	10.63
3	1/2 Ton Buckets	Mine	10.63
1	1 " "	Maas	17.71
1	2 ^{Four} TRAM Skips	Scrap	
6	Wooden Tram Cars		70.86
1	1/2 Ton Tram Car	Mine	11.81
1	Small Derrick, With Sheaves & Guys Foster		11.81
1	10" Sheave		.66
10	Rollers		.66
2	Timber Trolleys		2.63
1	8" Sheave		.50
2	Small Buckets	Yard	4.13
2	1/2 Ton Buckets	Yard	4.72
1	1 Ton Tram Car	Mine	
1	3/4 Ton Buckets	Maas	<u>10.63</u>
			<u>1282.28</u>
			1282.28
	Cars Built in 1898		
4	Tram Cars Crushers		788.92
2	Iron Tram Cars		116.80
1	Transfer		51.85
1	Self Dumping Car from Foster 1899		55.80
4	Underg Ground Tram Cars		77.67
2	Side dump Iron Tram Cars		<u> </u>
			1091.04
			1091.04

P O R T A B L E M A C H I N E R Y

2	#5 Knowles Pump	Mine	177.15
1	#6	Salisbury	162.39
1	#8	H. O. Shops	162.39
1	#10	Maas	236.20
1	#6	H. O. Mine	88.57
1	#5	Salisbury	73.82
1	Special #5 Cameron #4212	Yard	163.02
1	Duplex Worthington	14" x 16" x 16" Mine	236.20
1	"	4" x 4-2"x 4" Ware house	29.52
1	Winze Hoist	Hard Ore	88.58
1	Iron Water Bailer		50.00
1	16 x 24 Hodge Engines	Cost fore pairs	
		Hard Ore Shops 1896	91.13
1	6 x 4 x 6 Duplex Worthington		<u>115.00</u>
1	#5 Cameron Pump	Salisbury	<u>165.00</u>
1	6 x 4 x 6		1838.97
		Less 100%	1838.97
1	Lidgerwood Hoist #34	Dbl. Cyl	
	6, 1/4 x 8 Friction Drum	with	
	foot brake 45775	at East N. Y. Mines	457.75
		Less 75%	<u>343.31</u>
		Total Portable Machinery	114.44

BARN-HORSES

1	Black Horse 1430#	at Lake	150.00
1	"	1430# "	150.00
1	Bay Horse "Mack"	17 Cost Agents	125.00
1	"	"Dan" 17 "	125.00
1	Brown Horse Maud	17 Engineers	80.00
1	Bay Colt		<hr style="width: 50%; margin-left: auto; margin-right: 0;"/>
			630.00
		Less 75%	<u>472.50</u>
		Total Horses	157.50

Cliffs Shaft

MACHINERY SUPPLIES

BARN - CARTS WAGONS & SLEIGHS

1	Double Sleigh		1.35	
1	Wagon Box		7.39	
1	Double		14.76	
1	Light Double Wagon	M. M. D.	84.58	
1	Heavy Double Wagon		24.30	
1	"	Truck	14.77	
1	"	Dump Wagon	5.90	N. G.
1	Buck Board all in Pieces	"	5.90	
1	Dump Sleigh		5.90	
2	Wood Racks	"	1.77	
1	Wagon Jack		.60	
	Proportion of Agent's Cutter		19.49	
1	Neck Yoke		.88	
1	Single Sleigh, 2 Seats Engineers		<u>20.00</u>	
		Less 95%	207.59	
			197.21	10.38
		95% 1901		
1	Single Wagon Drills		25.00	
1	Wagon box Mine Wagon		<u>9.00</u>	
3	Cushions, Agent		1200	
	One half interest in following			
1	Set Double Harness Agent		30.00	
2	Blankets	"	4.00	
2	Sursingles	"	1.00	
1	Double Sleigh	"	90.87	
1	Single Buggy	"	77.02	
1	Double 3 seat Sleigh		49.35	
	Proportion of Ext. top Double Carriage		<u>167.87</u>	
			466.11	
		Less 95%	442.80	<u>23.31</u>
		48 (75% in 1901)		33.69

Cliffs Shaft.

MACHINERY SUPPLIES (Continued).

CARTS - WAGONS & SLEIGHS (Continued)

1	Single Sleigh for drills	
1	Double Sleigh for Mine	
1	" from Foster	
1	Set Whiffle trees Mine	
1	" Double Harness Mine	
2	Storm Covers Mine Team	

STEAM SHOVEL #3.

1	60 Ton Bucyrus Steam Shovel	7648.62
---	-----------------------------	---------

Depreciation and Rentals

1898	1517.68	
1899	1517.68	
"	Rentals	184.00
1900	1517.68	
"	"	160.00
1901.	1517.68	
1902	777.90	
1902	<u>456.00</u>	<u>7648.62</u>

0.00

Cliffs Shaft.

S U P P L Y & E Q U I P M E N T.

Recapitulation of Inventory, November 30, 1902.

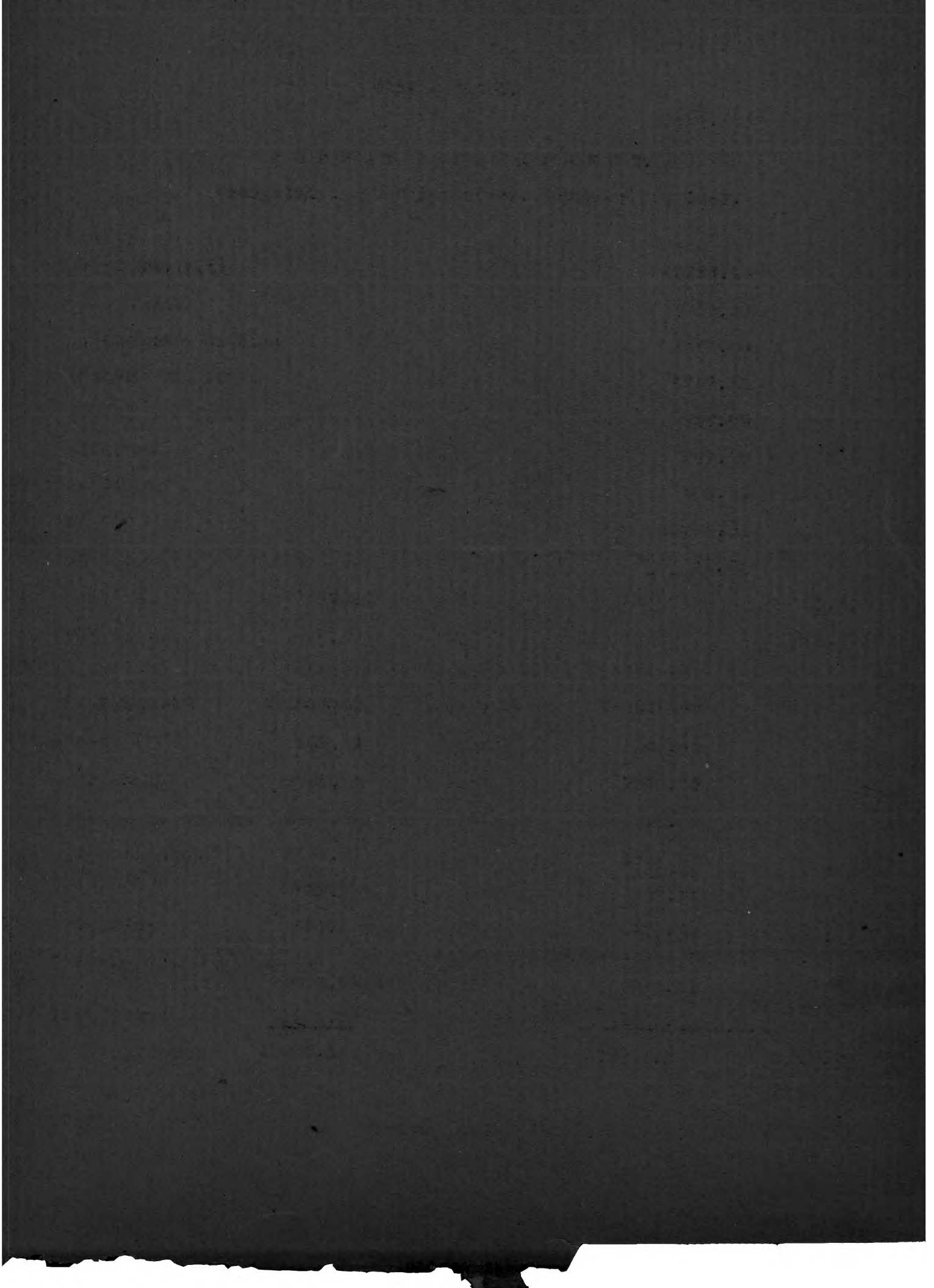
General Supplies	42382.16
Iron & Steel	1813.39
Oil, Grease & Candles	1458.09
Machinery Supplies	5787.50
Building Materials	463.56
Explosives	697.59
Mine Timber	464.51
Fuel	11678.96
Barn	<u>41.25</u>

Total 64787.01

Scrap 204.08

Mine Equipment	Valuation	Per Cent	Deduction	Net Amount
Diamond Drill	109.94	100	109.94	
Power Drill	7749.60	100	7749.60	
Cars, Skips & Derricks	2373.32	100	2373.32	
Portable Machy.	1838.97	100	1838.97	
"	457.75	75	343.31	114.44
Barn-Horses	630.00	75	472.50	157.50
" Carts Wagons & Sleighs	673.70	95	640.01	33.69
Steam Shovel	<u>1233.90</u>		<u>1233.90</u>	<u>00.00</u>
Total	15067.18		14761.55	305.63

Grand Total 65296.72



IRON CLIFFS CO.

Salisbury Mine Inventory, November 30th, 1902.

---oOo---

BUILDINGS.

1	Engine & Boiler House, Frame, Iron Covered	
1	Small Engine House	For Coal Hoist
1	Blacksmith and Carpenter Shop	Temporary
1	Shaft House Trestle and Pocket	
1	Frame Office Building	
1	Dry House	
1	Oil House	
1	Ice House	
1	Powder House	
1	Coal Shed Pocket and Trestle	1800 Tons Capacity
1	Dwelling House	Captain Thomas Buzzo
1	" "	Club
1	" "	Captain
12	" "	Frame
3	" "	Single
2	" "	Double
1	" "	" Log
7	" "	Single "
1	Barn	

Salisbury Mine.

PLANT.

ENGINE HOUSE.

2	18 x 48 Engines - Lane	
1	18 x 60 " - Reynolds	
2	10 ft. Drums	
1	18 x 30 Rand Compressor	
1	Heater	
2	18 x 84 Boilers	Reynolds Upright
1	6 x 14 Boiler	Tubular
1	6 x 14 Boiler	(Condemned)
1	Number 4 Feed Pump	
1	Air Receiver	
1	Condenser	Not in use
2	Extra Arms	For Lane Drums
1	Set of Electric Bells	From bottom of mine to Engine House
1	Telephone System	
1	16 x 30 Engine, Hodge	Coal Dock
1	4' Drum	" "
1	14 x 24 Engine	Merrits, Yard
1	4' Drum	Old yard
2200'	Wire Rope on Skip	
1600'	Wire Rope on Cage	

CORNISH PUMP.

2	Bobs, Rods, <i>with</i>	Fittings and Connections
1	12" Draw Lift	
1	12" Plungers	
2	12" Buckets	
5	14" Plungers	
2	8" Buckets	

Salisbury Mine

PLANT (Continued)

TEMPORARY ENGINE HOUSE.

1 Boiler - Belongs to Cliffs Shaft

FIRE EQUIPMENT

500' Rubber Hose and Nozzle
1 Hose Cart
1 King Fire Extinguisher
3 Manville Extinguishers
1 ~~Mackay-Norris Extinguisher~~

Surface Drainage Equipment

1 Pump "S & V Condensor" - Belongs to Hard Ore.
1 Portable Boiler - Belongs to Hard Ore

Machine Shops.

1 Bolt Cutter - Cleveland Shop
1 Drill Press - " "
1 Lathe - " "
1 Engine - Maas Mine

Supply Department.

20 Timber Winches
2 Jack Screws
1 1/2 Ton Moore Hoist
1 4 Ton Moore Hoist
1 15 Ton Moore Hoist
2 1/2" Triple Iron Blocks
4 4" Double Iron Blocks
1 Scraper
1 1/2" Single Block

Salisbury Mine.

GENERAL SUPPLIES.

12	1/2# Babbit	31	3 88
2	Brooms	4 20 per doz	70
1	Brush	2 40 " "	20
2	Burners No. 2	85 " "	14
4	Blocks Iron 6"	7 20	2 40
4	" " 8"	10 70	3 57
5	Chimneys No. 3 Rochester		
	2 00 per doz		83
2	Doz. Chalk Blue	12 ϕ " "	24
30	Sheets Emery Cloth	30 " "	75
1#	Emery Ground	10 " "	10
6	Lantern Globes	60 " "	30
3	Doz Lamp wicks No. 2	05 " "	15
4	Lamps, Miners	1 20 " "	40
8	Lamps 16 C P Incandescent	25 * *	2 00
9	Lamps 50 " "	75	6 75
14#	Lead, White	07-1/2	1 05
100	Lead, Red		
100	Ladder Rounds	02	2 00
13	Oilers 1 qt. galvanised	3 00	3 25
	Oil Can 1 gal.	20	
1	Paint Brush 4"	1 00	1 00
6	Squirt Can Spouts	40 per doz.	20
	Tacks, Car		
4#	Wicking, Candle	15	60
6#	Wire Spring	22	1 32
32#	Waste, White	07-1/4	2 32
3655'	Wire, Okonite	13 50	49 34
5#	Borax	12-1/2	62
23	Ton Bloss. Coal	3 65	83 95
44#	Chain 1/2"	04	1 76
	Total		169.82

S A L I S B U R Y M I N E .

GENERAL SUPPLIES (Cont 'd)

	Brought forward		169.82
3#	Copper Bar	.16	.48
2	Barrels Salt	1.00	4.00
9	Barrels Salt	.85	7.65
2335'	Wire Rope, Leschen & sons flat strand, ^{45-2-1/2%} _{626.07}		591.30
90#	Manilla Rope 3/4"	.13-1/2	12.15
210#	" " 1"	.13 3/4	28.88
6	Axes	7.50 per doz.	3.75
16	6" Paper files	3.40 75% Off	1.13
14	8" mill "	4.30 " "	1.25
1	14 Bast "	10.90 " "	.23
2	Stricking Hammers	1.00	2.00
4	Hand Saws	8.50 per doz.	2.84
4	Round point shovels	8.25 " "	2.75
5	Square " "	9.00 " "	3.75
6	Coal "	9.75 " "	4.87
1	15" Coos <i>Wrench</i>	12.00 - 50% <i>off</i>	.50
30	Hammer Handles	1.00 per doz.	2.50
	P P Handles	1.05 " "	
6	Saw Handles	.10	.60
38	Wedge Handles	.85 " "	2.70
5	Wheel borrows	18.00 " "	<u>7.50</u>
	Total General Supplies		850.65

Salisbury Mine

IRON & STEEL.

64#	Angle Iron, 2 x 1/4	2.25	1.44
59#	" " 2-1/2 x 1/2	2.25	1.33
100#	" " 3 x 1/2	2.25	2.25
556#	" " 4 x 1/2	2.75	15.29
4895'	16# Iron Rail	36.25 <i>on Jan</i>	79.22
82#	Round Iron 1/4"	3.00	2.46
11#	3/8 Round Iron	2.60	.29
176#	1/2 " "	2.40	4.22
	5/8 " "	2.30	
137#	3/4 " "	2.20	3.01
34#	7/8 " "	2.50	.85
204#	1" " "	2.10	4.28
200#	1-1/8 " "	2.10	4.20
	1-1/4 " "		
35#	1-1/2 " "	2.10	74
122#	1-3/4 " "	2.10	2.56
	" " "		.29
45#	2-1/4 " "	2.20	.99
241#	2-1/2 " "	2.60	6.27
41#	Square Iron 3/8	2.60	1.06
102#	1/2 Square Iron	2.40	2.45
32#	5/8 " "	2.30	.74
26#	3/4 " "	2.20	.57
38#	7/8 " "	2.20	.84
	1" " "		
76#	1-1/8 " "	2.10	1.60
262#	2 " "	2.30	6.03
178#	2-1/2 " "	2.30	4.09
210#	2-3/4 " "	2.30	<u>4.83</u>
	Total		151.61

Salisbury Mine

I R O N & S T E E L

		Brought Forward		151.61
299#	1" x 1/4	Flat Iron	2.65	7.68
187#	2 x 1/2	" "	2.10	3.93
140#	2 x 5/8	" "	2.10	2.94
100#	3 x 1	" "	2.10	2.10
136#	4 x 5/8	" "	2.10	2.86
	4 x 1	" "	2.10	
336#	4 x 2	" "	2.60	8.74
150#	6 x 3/4	" "	2.20	3.30
162#	5 x 3/4	" "	2.20	3.56
275#	6 x 1-1/8	" "	2.50	6.88
587#	6 x 2	" "	2.70	15.85
55#	1" Round Lowmoor		.08	4.40
100#	1-1/4 Round Lowmoor		.08	8.00
56#	1-1/4" R S Iron Swedges		.04	2.24
159#	2-1/4" " "		.04	6.36
29#	2 x 1/4	" "	.04	1.16
	1" Soft Round Steel			
	1-1/4" Soft Round Steel			
35#	1-1/2" " "		2.25	.79
	1-3/4"			
	2"			
36#	1" Square Steel		2.25	.81
70#	1-1/2" "		2.25	1.58
80#	3" "		2.25	1.80
20#	1-1/4 x 3/4 Tool Steel		.05 1/2	1.10
23#	Spring Steel		.05 1/2	1.27
181#	3 x 3/8 Sleigh Shoe Steel		2.50	4.53
	3/4 Round Drill Steel			
105#	1" " "		.05-1/2	5.77
536#	1-1/4 " "		.06-1/4	<u>33.50</u>
			Total	282.76

IRON & STEEL (continued)

		Brought forward	282.76
1630#	1/4 - 42 x 96 <i>Steel Plate</i>	40.75 ^{2.50}	40.75
1890#	3/8 - 36 x 120 "	2.50	47.25
655#	1/2 - 36 x 120 "	2.50	16.38
1560#	3/4 - 60 x 120 "	2.00	31.20
260#	3/4 - 30 x 18 "	2.00	5.20
60#	1/2" Square Blank <i>net</i> 5-1/2	3.75	2.25
30#	5/8" " " 5-1/2	3.75	1.13
52#	3/4" " " 4-1/2	3.75	1.95
36#	7/8" " " 4	3.75	1.35
55#	1/2 Washers	.05	2.75
25#	3/8 "	.04	1.00
110	Fish Plate Bolts	.04-1/2	4.95
150	5 x 3/4 Coach Screws	3.71	5.56
450	12 x 5/8 Sag Screws	Net	17.19
10#	1" x 3/8" Rivets	.04	.40
	1 x 1/2 "	"	
20#	1-1/2 x 3/8 "	"	.80
16#	2 x 1/2 "	"	.64
25#	2 x 5/8 "	"	1.00
35#	2 x 3/4 "	"	1.40
100#	2-1/4 x 5/8 "	"	4.00
39#	2-3/4 x 5/8 "	"	1.56
18#	4 x 5/8 "	"	.72
20#	Boat Spikes 3/8" x 8	5.25	1.05
300#	R. R. Spikes 3-1/2 x 7/16	5.55 per keg	8.33
300#	" " 4-1/2 x 7/16	5.55 "	8.33
200#	" " 4-1/2 x 1/2	5.55 "	5.55
100#	<i>Lack Truts for Ship Road</i>		<u>.70</u>
Total			496.15

Salisbury Mine.

I R O N & S T E E L (Continued).

		Brought Forward		496.15
100#	4 ^a Wire Nails	2.70		2.70
	6" "			
60#	8" "	2.50		1.50
120#	10" "	2.45		2.94
150#	20" "	2.40		3.60
	30" "	2.40		
100#	40" "	2.40		2.40
150#	50" "	2.40		3.60
100#	60" "	2.40		2.40
46	3/8 x 1-1/2 Carriage Bolts	1.60	.74	
44	3/8 x 2 "	1.76	.77	
55	3/8 x 2-1/2 "	1.92	1.06	
49	3/8 x 3 "	2.08	1.02	
67	3/8 x 3-1/2 "	2.24	1.50	
50	1/2 x 2 "	2.42	1.21	
44	1/2 x 1-1/2 "	3.00	1.32	
50	1/2 x 3 "	3.22	1.62	
50	1/2 x 3-1/2 "	3.44	<u>1.72</u>	
	60% & 10% Off		10.95	<u>3.94</u>
				23.08
	Total I R O N & S T E E L			519.23

Salisbury Mine.

O I L, G R E A S E & C A N D L E S .

6	Gal. Air Cylinder Oils	.29	1.74
68	Black Oil	.095	6.46
40	Gals. Cylinder Oil	.23	9.20
62	Gals. Indian Red Oil	.13	8.06
74	Gals. Kerosene Oil	.105	7.77
10#	Axle Cup Grease	.08	.80
230#	Axle Grease	.01,7/8	4.32
15#	Graphite Gear Grease	.03,1/2	.53
70#	Tallow	.08	5.60
70#	Moonshine	.065	4.55
10	Gals. Wire Rope Oil	.40	4.00
2688#	Candles	.07,1/4	<u>194.88</u>

Total ^{oil} I R O N , G R E A S E & C A N D L E S, 247.91

Salisbury Mine.

MACHINERY SUPPLIES.

1' Pipe		.165		
101-1/3' 2" Pipe		.36	36.24	
	Less 65 & 7-1/2%		24.67	11.81
29' 8' Pipe		2.82	81.78	
34' 10" Pipe		4.25	<u>144.50</u>	
			226.28	
	Less 68%		153.87	
4 3/8"				72.41
4 3/8" Bushings		.04	.16	
4 1/2 "		.04	.16	
11 3/4 "		.05	.55	
6 1 "		.06	.36	
6 1-1/4 "		.07	.42	
5 2 "		.14	.70	
6 2-1/2 "		.21	1.26	
3		.30	<u> </u>	
	Less 75% & 5%		3.61	.85
11 1/4" Couplings		.05	.55	
9 1/2 "		.07	.63	
16 3/4 "		.10	1.60	
20 1 "		.13	2.60	
12 1-1/4 "		.17	2.04	
6 1/2 "		.21	1.26	
5 2 "		.28	1.40	
2-1/2 "		.40		
3 "		.60		
3-1/2 "		.80		
8 4 "		1.00	<u>8.00</u>	
	Less 70, 5, 2-1/2%		18.08	5.02
3 1" Crosses		.27	.81	<u>.19</u>
	Less 75, 5%			<u>5.81</u>

Salisbury Mine,

MACHINERY SUPPLIES (Continued)

		Brought Forward		90.28
8	1/4" Elbows	.05	.40	
4	3/8 "	.05	.20	
5	1/2 "	.06	.30	
4	3/4 "	.08	.32	
16	1 "	.105	1.68	
8	1-1/4 "	.16	1.28	
3	1-1/2 "	.20	.60	
5	2 "	.28	1.40	
2	2-1/2 "	.50	1.00	
	3	.75		
3	4 "	1.20	3.60	
1	6 "	2.75	<u>2.75</u>	
		Less 70, 10%	13.55	3.74
	1/4" Tees	.08		
10	1/2" "	.09	.90	
25	3/4 "	.12	2.40	
27	1 "	.15	4.05	
9	1/4 "	.23	2.07	
3	1/2 "	.29	.87	
5	2 "	.41	2.05	
3	2-1/2 "	.73	<u>2.19</u>	
		Less 70, 10%	14.53	3.93
3	3/8 Unions	.20	.60	
5	1/2 "	.22	1.12	
15	3/4 "	.27	4.05	
23	1 "	.33	7.59	
8	1-1/4 "	.46	3.68	
7	1-1/2 "	.58	4.06	
4	2 "	.75	3.00	
1	3 "	2.10	2.10	
1	3 1/2 "	3.65	<u>3.65</u>	
		Less 70, 10%	29.85	<u>8.05</u>
			<i>Final</i>	106.00

Salisbury Mine.

MACHINERY SUPPLIES (Continued)

1	3-1/2		2.10		2.10
		Brought Forward			24.02
	1/4"	Stand Globe Valves	.72		102.00
6	1/2	" "	1.00	6.00	
6	3/4	" "	1.26	7.56	
10	1	" "	1.80	18.00	
9	1-1/4	" "	2.52	22.68	
3	1-1/2	" "	3.50	10.50	
1	2	" "	5.30	<u>- 5.30</u>	
		Less 70, 5%		70.04	19.96
6	1" Flanges		.52	3.12	
	2		1.00		
4	2-1/2	"	1.25	5.00	
1	3	"	1.50	1.50	
4	3-1/2	"	1.80	<u>7.20</u>	
		Less 70, 10%		16.82	4.55
3	1/4" Nipples		.04	.12	
2	3/8	"	.04	.08	
2	1/2	"	.05	.10	
21	3/4	"	.06	1.26	
25	1	"	.08	2.00	
12	1-1/4	"	.11	1.32	
	2	"	.18		
8	1-1/2	"	.13	1.04	
	2-1/2	"	.39		
1	4	"	.85	<u>.85</u>	
		Less 75, 10%	1.57	<u>6.77</u>	<u>1.52</u>
					6.07
		Total			132.03

Salisbury Mine.

MACHINERY SUPPLIES (Continued)

		<i>Brought forward</i>		<i>132.03</i>
6	1/4" Plugs	.02	.12	
4	3/8 "	.02	.08	
9	1/2 "	.02	.18	
	3/8	.02		
18	3/4 "	.03	.54	
7	1 "	.04	.28	
9	1-1/4 "	.05	.45	
11	1-1/2 "	.07	.77	
4	2 "	.10	.40	
	2-1/2	.18		
1	3 "	.05	.25	
		Less 75, 5%	3.07	.73
184	Brackets for Cage Catches	2.40		4.42
	Brake Blocks	.25		
522#	Machinery Castings	2.40		12.53
2960#	Car Wheels	3.00		88.80
100#	Car Wheels Caps	2.90		2.90
10	20" Sheaves <i>1270#</i>	2.90		36.83
1	Wheel for Chain Block			1.50
6	Sheaves Idler <i>312#</i>	2.90		9.05
200#	Grate Bars	2.70		5.40
247#	Fiber	.50		1.37
4	Water Gage Glasses 3/4 x 13	4.80	<i>8% off</i>	3.84
2	Clamps for Hose	.20		.40
2	Couplings for Hose	.20		.40
3	Pump Springs	.25		.75
6"	Graphite	.18		1.08
1	Feed Nuts, No. 2	4.00		4.00
1	" " 3-1/4	1.00		1.00
5	Leg Sleeves " 2	.80		<i>4.00</i> 2.20
3	J. Nuts " 2	.40		1.20
2	Rear Leg Castings #2	2.60		<u>5.20</u>

Total

14

317.43

Salisbury Mine.

M A C H I N E R Y S U P P L I E S (Continued).

		Brought Forward		317.43
5	5/8" Eureka Packing	.38		1.90
10,7/8	3/4" "	.38		4.07
4,1/2	5/8" Dollar "	.72		3.24
	1" Eureka Packing	.38		
6,5/8	3/4" Dollar Packing	.72		4.77
7,1/8	1" "			
30	Hemp "	.13		3.90
22	1" Empire Packing	.26		5.72
10	3/4 Sq. Rubber Packing	.42		4.20
2	1/2 " "	.42		.84
35	1/8 Sheet Rubber	.125		4.37
100'	Air Hose	.30	Net	30.00
50'	"	.33	"	16.50
1	Set Rubber Valves No. 4 Pump 1,1/2"	.90		1.35
1	" " " 6 "			1.60
56,1/4	Sole Leather	.30		<u>16.83</u>
Total Machinery Supplies				416.77

Salisbury Mine.

BUILDING MATERIAL.

100'	Pine Flooring	35.00	35.00
40'	1" Maple	34.00	1.36
106'	2" Oak	31.50	3.34
70'	3' "	31.50	2.21
288'	6 x 8 Oak	31.50	9.07
6900'	6 x 6 Pine	22.00	151.80
680'	3-1/4 Hardwood flooring	22.50	15.30
150#	Min Paint	1.35	2.03
32	Gal. Linseed Oil	.69	22.08
21635'	3' Hemlock	10.75	232.57
6	Rim Knob locks	2.50	1.25
2	Pr. 6" T. Hinges	.20	.40
32	Old Sand Stone Labor getting out		<u>86.40</u>
Total Building Materials			562.81

EXPLOSIVES.

8500'	Crescent Fuse	4.25	36.13
1300	Caps	6.00	7.80
10#	Battery Wire	.20	3.00
300#	Electrical Fuses	30.00	9.00
1650	40% Grant Powder	.105	173.25
1400	50% "	.12	<u>168.00</u>
Total Explosives			397.18

Salisbury Mine.

M I N E T I M B E R .

75000	7' Lagging	.60	450.00
232'	6 x 8 x 16	.02	4.64
5364	8 x 10 x 16	.03	160.92
3439	10 x 12 x 16	.05	171.95
11594	12 x 14 x 16	.065	753.61
1842	14 x 16 x 16	.09	165.78
576	16 x 18 x 16	.12	69.12
50	Trestle Timber	.125	6.25
120	Pump Rods	.25	30.00
26195'	Pales	.01	261.95
			<u>2074.22</u>
	Less 10% DEpreciation		<u>207.42</u>

Total

1866.80

F U E L .

1908	Tons Soft Coal		
	Actual Cost in Shed	2.91	5552.28

B A R N .

20	Tons Hay	13.00	260.00
645	Bu. Oats	.37	238.65
1500*	Tons Straw	7.50	5.62
100#	Bran	17.50	.88
60#	Horse Shoes	.05	3.00
11-1/2#	" Nails	.17	1.96
5#	Toe Calks	.06	.30
1	Single tree	.45	.45
2	Eveners	1.50	<u>3.00</u>

Total Barn

513.86

Solidbury Mine

SCRAP.

260#	Brass Scrap	.07	18.20
150#	Copper "	.07	10.50
1/2	Ton Cast Iron	10.00	5.00
1/2	Ton Wrought (<i>Mixed</i>)	8.00	<u>4.00</u>

Total Scrap

37.70

ANTIQUATED

1	Sand Stove	6 x 3 x 2 ft.)	
1	" "	14-1/2 x 8 ft.)	No price.
1	" "	14-1/2 x 8 ft.)	

Salisbury Mine.

MINE EQUIPMENT.

Power Drills.

6	Bars for Rand Drills		00.00	00.
3	#2 Rand Drills at Mine	25.50	76.50	
1	#3 " at Lake Mine		25.50	
1	#3 " at Mine		25.50	
1	#3, 1/4 " & Tripod Mine		247.20	
2	#3, 1/4 " " Barn	82.72	<u>165.44</u>	
			540.14	
			<u>540.14</u>	00.00

Portable Machinery.

1	#8 Earl Pump	Clev. Yard)		
1	#9 " "	")		
				Sold to L.S.I. & M. Co.
1	Steam Dome	Yard	2.95	
2	Winze Hoists	Mine	295.24	
1	"	Mine		
150'	2, 1/2" Cotton Hose		48.99	
1	Portable Bailer from Neely for Surface Drainage		<u>180.00</u>	
			527.18	
			<u>527.18</u>	00.00

Record.

1	#5 Earle Pump at Tank	} Sold for scrap 1902.	
1	#6 " "		
1	Tunnel & Pipe for Fan.		In Barn
1	Bailer at Cliffs Shaft		
1	#8 Spec. C. Pump at Cliffs Shaft		
1	#8 Knowles Pump From Cliffs Shaft,		Pump water to Boiler.
1	#5 " " " "		In B. House
1	#5 Cameron " " "		Mine
1	Portable Drill from Hard Ore Shop		
1	Winze Hoist From Lake Mine		
1	Pump From Hard Ore Mine		Surface Pump
1	Bailer in Salisbury Shop		19 Belongs to Cliffs Shaft

Salisbury Mine

MINE EQUIPMENT (Continued)

CARS, SKIPS & DERRICKS

2	3/4 Ton Buckets	Shop	
1	1/2 "	Shop	
1	Timber Cage	Mine	
	Top Tram Car		
20	Tram Cars 12 in Mine 8 in shop		
10	Small Tram Cars	Mine	
1	Large Coal Car	Coal Dock	
2	2,1/4 Ton Skips		
1	Small Coal Car	Engine House	
1	Platform Cage	New Shop	Charged to Maintenance

BARN- CARTS, WAGONS & SLEIGHS.

1	Buggy Proportion of Agents		31.01
1	Cutter "		11.37
1	Wood Sleigh	Broken	8.85
1	Dump Sleigh	"	5.90
1	Timber Tank <i>Truck</i>		2.96
1	Double Wagon		14.76
1	Single Wagon		5.90
1	Dump "		5.90
2	Single Sleighs		17.70
1	Buggy		20.25
1	Cutter		<u>14.77</u>
			139.38
		Less 100%	139.38 0.00

BARN - HORSES

1	Bay Horse	Ned	150.00
1	Bay Horse	Dave	150.00
1	Bay Horse <i>mare</i>	Neal	70.86
1	Bay Mule	Mike	100.00
1	Black Mule	Pat	<u>100.00</u>
			570.86
		Less 80%	<u>456.69</u> 114.17

Salisbury Mine.

Recapitulation of Inventory, November 30, 1902.

SUPPLIES.

General supplies	850.65
Iron & Steel	519.23
Oil, Grease and Candles	247.91
Machinery Supplies	416.77
Building Material	562.81
Explosives	397.18
Mine Timber	1866.80
Fuel	5552.28
Barn	513.86
Total Supplies	10927.49

Scrap	37.70
-------	-------

MINE EQUIPMENT.

	Valuation	Per Cent	Deduction	Net Amt.
Power Drills	540.14	100.	540.14	
Portable Machinery	527.18	100.	527.18	
Barn, Horses	570.86	80.	456.69	114.17
Barn, Carts, Wagons & Sleighs	<u>139.38</u>	100.	<u>139.38</u>	
Total Mine Equipment	1777.56		1663.39	114.17

Grand Total	11079.36
-------------	----------

I R O N C L I F F S C O M P A N Y .

FOSTER MINE INVENTORY, NOVEMBER 30th., 1902.

B U I L D I N G S

- 1 Frame Engine & Boiler House
- 1 Frame Office
- 1 Frame Blacksmith shop
- 1 Frame Barn
- 1 Frame Coal Trestle
- 1 Frame Shaft House, (Poor)
- 1 Frame Coal House, Hard Coal
- 1 Frame Dwelling, 2 story & Barn - Captains
- 3 Frame Dwellings
- 12 Log Dwellings

P L A N T

- 1 20 x 30 Merritt Hoisting Engine
- 1 6' Merritt Hoisting Drum
- 1100 Feet 1-1/8" Steel Hoisting Rope
- 2 Horizontal Tubular Boilers Small

R E C O R D

- 1 Hand Drilling Maching at Tilden

IRON CLIFFS COMPANY.

Fitch Mine Inventory, November 30th, 1902.

- 1 Horizontal Tubular Water Heater 12' x 18" with 32 2"
Tubes 10' long, Stored at Cliffs Shaft.

THE CLEVELAND -CLIFFS IRON COMPANY

I N V E N T O R Y

O F

P E R S O N A L P R O P E R T Y

NOVEMBER 30th.1902.

I S H P E M I N G , M I C H .

THE CLEVELAND-CLIFFS IRON COMPANY .

INDEX TO INVENTORIES, NOVEMBER 30th., 1902.

GENERAL ACCOUNTS

	Maas	Ashland	Imperial	Michigamme	Swanzy
Buildings - - - - -	1	1	1		
Plant - - - - -	2 - 3	2	1		
Crusher - - - - -		12			
General Supplies - - - - -	3 - 4	3 - 6	2	1 - 2	
Iron & Steel - - - - -	5 - 7	7 - 13	3		3
Oil Grease & Candles - - - - -	8	14			
Machinery Supplies - - - - -	9 - 14	14 - 22	4 - 8	4 - 9	
Building Material - - - - -	15 - 16	23 - 25	9		10
Separator Equipment - - - - -		12			
Explosives - - - - -	16	26			
Mine Timber - - - - -	16	27	10		
Fuel - - - - -	16	27	10		6
Barn - - - - -		28			
Antiquated - - - - -	16				
Scrap - - - - -	17				
Mine Equipment - - - - -		28 - 33		10 - 12	
Diamond Drills - - - - -					1 - 5
Racapitulation - - - - -	17	34	12	13	6