

Bonds For Whitman School Building, Site Paid In Full

Bonds totaling \$400,000 for the purchase of land and erection of the Willard M. Whitman Elementary School have been paid in full, 40 years after the bond issue was approved.

Herman E. Olson, president of the board of education, announced at this week's school board meeting held in the Gravelaet building that the last bond for Whitman School was cancelled in October.

On May 18, 1953, Marquette voters authorized a six mill tax levy for 20 years for Whitman School construction and yesterday the school board adopted a resolution to remove the millage levy from the city treasurer's records.

The school board also approved the transfer of \$16,724.19 from the 1953 debt retirement fund to the 1962 debt retirement fund for the erection of the new high school and Whitman and Sandy Knoll additions.

Had Reserve Fund
The \$16,724.19 was the percentage of the Whitman School bond issue which the school board had been required to hold in reserve for the protection of the bond holders.

The reserve funds have not been required for bond issues passed since 1955. Instead, for bond issues approved by the Michigan Municipal Finance Commission, the full faith and credit of the state stands behind the bond issue.

Superintendent of Schools Henry J. Bothwell said the funds transferred may be used as payment on the high school bond issue.

Requirement Cited
Bothwell explained that when the 20-year bond issue was approved in 1953 the school district was required to specify a certain number of mills that would be collected each year.

Each year since the bond issue was authorized the school district has collected the six-mill levy from the taxpayers. However, during that time the valuation of the city has increased, enabling the school

board to retire the bond issue in half the time authorized.

Specified Amount Levied
Bothwell noted that since 1955 schools have not been required to specify the millage that will be collected in bond issues.

Instead, as in the case of the high school bond issue, a specified payment of principal and interest is due each year.

Hence, if the valuation of the city continues to increase, the number of mills that will be collected each year on the high school bond issue will be decreased, he said.

Also at the meeting, the school board:

- Heard a report from Bothwell, who said that changes in at the Gravelaet building and Sandy Knoll School required by the state fire marshal are being made.
- Asked Bothwell to have a local contractor estimate improvements needed in a converted classroom at Parkview School, at the suggestion of Mrs. Richard Sonderegger.
- Approved for payment invoices totaling \$11,860.42.

Mine Project

(Continued from Page One)

the mine will again bring it up to capacity.

Seven Marquette County residents were present in the Governor's office this morning when the CCI-McLouth announcement was made. They were Rep. Jacobetti; Carl W. Corneliuson, Ishpeming, chairman of the Marquette County Board of Supervisors; Earl Makela, Negaunee mayor; Theodore R. Mattson, Ishpeming mayor; Ogden E. Johnson, Ishpeming, director of industrial relations for CCI; Thomas Pellow, Gwin, president of the Marquette County Economic Study Committee, and this writer, who is secretary of the committee.

Among others present was James S. Westmaster, Cleveland, vice president of CCI and a former Ishpeming resident. Rep. Jacobetti's bill was

Board Pays Tribute To L. LeVasseur

Marquette County's board of supervisors paused for a period of silent prayer at the opening of yesterday's meeting in respect to the late Lloyd LeVasseur of Marquette.

Mr. LeVasseur, who died earlier this month, had served as county clerk for 27 years. "He was one of the most outstanding clerks in Michigan," said County Board Chairman Carl W. Corneliuson, Ishpeming, "and perhaps the finest in the state."

"Friend of All"
"Mr. LeVasseur was a friend of every member of the board, and he was able to carry out his duties in the best possible manner. He was thoughtful, efficient and capable."

"I'm sure each supervisor feels as I do, that we lost a friend as well as our clerk, for Mr. LeVasseur maintained a close relationship with each member of the board. In all his years here I don't believe he ever made a mistake."

Corneliuson also asked the board to adopt a resolution paying tribute to Mr. LeVasseur, with a copy sent to his family.

The board chairman also introduced the newly appointed county clerk, Roy C. Lee of Marquette.

During the three months while Mr. LeVasseur had been ill, Miss Mildred M. Johnson of Marquette, carried out the duties of the office.

Grease Catches Fire In Garbage Box In Residence

Hot grease which was poured into a garbage box in the kitchen of the Gary Duer residence at 2314 Fitch Ave. accidentally caught fire at 9:10 yesterday morning.

City firemen were summoned but the blaze had been extinguished by an occupant with a pail of water on arrival of firemen.

Matches In Box
There apparently had been a package of matches in the cardboard box, firemen said, and the hot grease caused them to ignite. There was some minor wall damage and considerable smoke in the house.

Seven firemen responded to the call with the Nos. 2 (1,000-gallon) and 4 (750-gallon) pumps and the service truck. They returned to the station at 9:41 a.m.

Three Persons Hurt, Two Ticketed In City Mishaps

Three persons were injured, a motorist was ticketed and three vehicles were involved in three traffic accidents which occurred in Marquette yesterday.

City police also said three other minor mishaps, in which no tickets were issued and no one was injured, occurred here. Reports on the three principal accidents follow:

1. At 6 p. m. yesterday a car being driven north on County Road 553 by Carl M. Superko, 57, of 633 N. Fifth St., Ishpeming, went out of control about 100 yards north of Cliffs Ridge.

City police said he applied the brakes for the turn at the bottom of the hill. His car slid about 75 yards before leaving the roadway, striking an iron guard rail about five feet from the east edge of the road.

Mrs. Superko, 57, in the front seat, suffered a bruise over her left eye, and sought her own treatment.

Extensive damage resulted to the grill, hood, bumper and both front fenders of Superko's car, a 1959 four-door sedan, which had to be towed from the scene by a wrecker.

Too Fast For Conditions
City police ticketed Superko's for driving too fast for conditions.

2. Charmaine Smith, 11-year-old daughter of Mr. and Mrs. John B. Smith, 412 Blenhuber Ave., was injured when she ran out from behind a high snowbank on the south side of Fisher St. into the left front of a car being driven west on Fisher St. by Marlena J. O'Neill, 24, of 1250 Woodridge St., at 4:30 yesterday afternoon.

The Smith girl suffered minor cuts and a bump on her head.

The parents, who were at the scene and who said the driver had attempted to avoid the mishap, brought the child to St. Mary's Hospital.

3. At 5:30 yesterday afternoon Kenneth Smith, seven-year-old son of Mr. and Mrs. Bernard Smith, 1513 Lynn St., was injured when his sled slid into the left front of a car operated by George N. Nasse, 39, of 1505 Lynn St., who was driving west on Center St. and making a left turn onto Lynn.

The Smith child suffered a bump on his head and scratches about his forehead. He was brought by his parents to St. Luke's Hospital, where X-rays were to be taken.

The driver stopped after the mishap and brought the youngster to his home, city police said.

Fat Overweight

Available to you without a doctor's prescription, our product called Odrinex. You must lose 10% fat in 7 days or your money back. Odrinex is a tiny tablet and easily swallowed. Get rid of excess fat and live longer. Odrinex costs \$3.00 and is sold in this guarantee: If not satisfied for any reason, just return the package to your druggist and get your full money back. No questions asked. Odrinex is sold with this guarantee by: Johnson Pharmacy - 121 W. Washington - Mail Orders Filled.

AN AVERAGE OF 24 LETTERS PER MINUTE can be sorted by hand in the Post Office as compared with more than 50 when a mechanical sorter is used.

THESE MORE TEA DRINKING PLEASURES FOR YOU, YOUR FAMILY AND FRIENDS WITH BIGELOW'S Constant Comment™

the famous delicious blend of fine TEA with ORANGES and SWEET SPICE an original product of B. C. BIGELOW Inc., Newark, Conn.

LaBonte's Food Store
800 North Third St.
Marquette

WHY TIE A WATCHBAND IN A KNOT?

Because of this simple demonstration, hundreds of our customers have bought Twist-O-Flex watchbands by Spidel. It proves without a doubt that Twist-O-Flex is the most flexible, durable, comfortable watchband in the world! Looks like a million too... but the clincher is the price! Only \$4.95 in stainless steel, \$6.95 to \$10.95 in 10 karat gold-filled! Come in today. Choose from twenty handsome Twist-O-Flex designs. We'll custom fit it to your wrist and watch.

JEAN'S JEWELRY
118 S. FRONT ST. MARQUETTE

MONTGOMERY WARD

as advertised in POPULAR MECHANICS

EACH 49⁹⁹
No Money Down

\$12-\$19 OFF!
POWR-KRAFT INDUSTRIAL-DUTY TOOLS—PROFESSIONAL QUALITY!

64.95 CIRCULAR SAW
7 1/2" contractor-type. 12-amp. motor develops 2 hp, 5500 rpm. Cuts 2 1/2" at 90°, 2 3/8" at 45°. Ball, needle bearings.

POLISHER OR SANDER
Reg. 69.95 ea. Both 7" size with 100% ball bearings for production line work. Polisher with bonnet. Sander with three discs.

62.50 BELT SANDER 3x21" size—true flush sanding. Sands wood, marble, metal, slate, plastic, stone. 100% ball bearing motor. Lever-action belt changer.

Satisfaction Guaranteed or Your Money Back!
No Money Down, Just Say "Charge It!"

Fresh Native Lake Superior Trout

MOOSE FISH FRY FRIDAY
— FOLLOWING —
DANCING

MUSIC BY **JOHN SYRIA DUO**

CHRISTMAS PARTY
Sunday, Dec. 22, 1963
Members & Kiddies
2 P.M. Til 5 P.M.
Santa and the Works

Moose Lodge 1059
2 Miles West of Marquette

TRAIN PACKS for H.O. Scale Trains
\$8.95 — \$10.95
\$13.95 — \$14.95

ALSO: Tracks 1 1/2 Inches to 36 Inches—Switches, Crossings, Buildings, Etc.

PLENTY OF FREE PARKING AT...

Lupton's
HOBBY CORNER
5th & Baraga Marquette

A GIFT OF PLEASURE... ALL WILL TREASURE!
Theatre Coupons ★ \$2.50 — \$3.00 — \$5.00 in Theatre admissions with Holiday Gift folders — Now on sale at both Theatres.

NORDIC THEATRE STARTS TONIGHT

Two "Must See" Motion Pictures!
SHOWING ONCE EVENINGS AT 6:45 P.M.
WINNER OF 3 ACADEMY AWARDS!

THE PULITZER PRIZE NOVEL NOW COMES TO THE SCREEN!

To kill a Mockingbird starring **GREGORY PECK**

PLUS — Big Co-Hit Showing at 8:50 P.M.

"It could be the most terrifying motion picture I have ever made!" — ALFRED HITCHCOCK

ALFRED HITCHCOCK'S "The Birds"
TECHNICOLOR
A Universal Release

ROD TAYLOR - JESSICA TANDY - SUZANNE PLESSETTE and introducing TIPPY HEDREN

DELFT THEATRE NOW Thru SAT. 2 GREAT HITS IN COLOR!

RODGERS AND HAMMERSTEIN'S NEW STATE FAIR
CINEMASCOPE COLOR BY TECHNICOLOR

starring **PAT BOONE BOBBY DARIN PAMELA TIFFIN ANN-MARGRET TOM EWELL and ALICE FAYE**

JUMBO
MUSIC OF RODGERS & HART
METRO COLOR PANAVISION

"STATE FAIR" AT 6:45 P.M. — "JUMBO" AT 8:45 P.M.

So Many Gifts to Please... all SHULTON quality!

Old Spice FOR MEN

After Shave Lotion or Men's Cologne 1.25
Large size 2.00

New Twosome... 2.25
After Shave Lotion and Man-Power Aerial Deodorant

...and for HER

The Goddess Touch in Spray Cologne 3.00
Early American Old Spice, Friendship Garden, Desert Flower, Escapade

Bubble Bouquet... 2.00
To soften her bath with the perfumed foam of Escapade, Early American Old Spice, Friendship Garden and Desert Flower

JOHNSON'S QUALITY DRUG STORES
Walgreen Agencies

MARQUETTE Phone CA 6-6556
ISHPEMING Phone HU 6-8641

Lady Buxton flips her lid

yawns snaps
flares up gapes
sprawls clams up

priced from \$3.95 to \$10.00

Here is the exquisite gift and it will be personalized with her initials — free of charge — in genuine 23-karat gold.

JOHNSON'S QUALITY DRUG STORES
Walgreen Agencies

MARQUETTE Phone CA 6-6556
ISHPEMING Phone HU 6-8641

CANOE

a man's after shave, after bath cologne made, bottled, sealed in France... \$5, \$8.50, \$14. PLUS TAX

Dana

JOHNSON'S QUALITY DRUG STORES
Walgreen Agencies

MARQUETTE Phone CA 6-6556
ISHPEMING Phone HU 6-8641

Pearce's Pre-HOLIDAY Storewide FURNITURE SALE

LAST 4 DAYS — SALE ENDS TUESDAY, DEC. 24TH

BUY NOW AT TREMENDOUS SAVINGS DURING THIS BIG PRE-CHRISTMAS SALE OF FURNITURE - APPLIANCES - RUGS - CARPETING! EVERYTHING IN OUR STORE REDUCED! OUR STORE IS JAM PACKED!

With hundreds of new items — Living Room — Bedroom — Dining Room — Chairs of all kinds — Bedding — Rugs and Carpets — Occasional Tables — Pictures — Mirrors — Desks — Floor Lamps — Table Lamps — Hassocks — TV Sets — Washers — Dryers — Hi-Fi and Stereo Sets — Toasters — Mixers — Hair Dryers — Electric Can Openers — Fry Pans — Everything reduced except a few Nationally Advertised Items.



DOZENS OF NEW CHAIRS OF ALL DESCRIPTIONS

Contour CONTOUR CHAIRS

FROM \$79⁹⁵

An ideal gift for Dad — A big comfortable reclining chair covered in Super-soft Plastic — All Nylon or Plastic and Fabric — Cushioned with Foam Rubber — Choice of Styles and Covers.

OTHER FINE CHAIRS

- Reg. 59.95 Platform Rocker, brown nylon . . . 49.88
- Reg. 59.95 Occasional Chairs, channel back, choice colors . . . 49.88
- Reg. 99.95 Hi-Back Swivel Rockers, foam & plastic, choice colors 79.88
- Reg. 134.00 Big Swivel Rockers, Mastercraft, foam rubber . . . 109.00 and nylon
- Reg. 39.95 Swivel Rockers . . . 34.88

SPECIAL CHRISTMAS BONUS



14.95 CORNING-WARE SAUCE-PAN SET

FREE

WITH ANY PURCHASE OF 99.95 OR OVER SET INCLUDES

- 1 Qt. Sauce Pan
- 1 1/4 Qt. Sauce Pan
- 1 Cradle
- 1 1/4 Qt. Sauce Pan
- 3 Covers
- 1 Handle

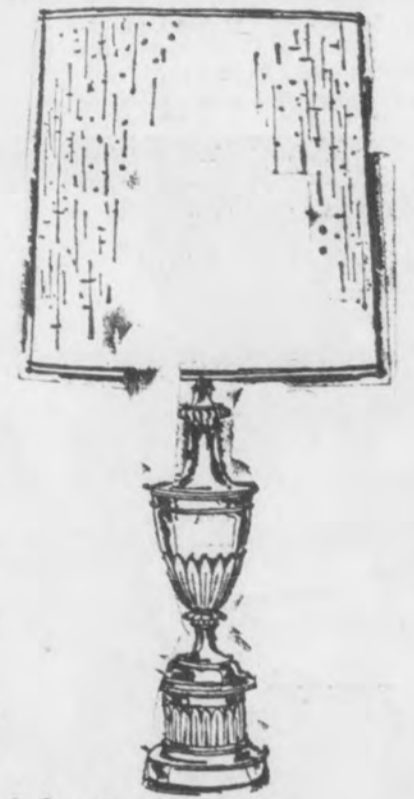
HUNDREDS of NEW LAMPS

TABLE-FLOOR-POLE & TREE LAMPS

BY

STIFFEL — MIDWEST NOVA — EMPIRE

- Reg. 14.90 Pr. Table Lamps . Pr. 9⁸⁸
- Reg. 19.90 Pr. Table Lamps Pr. 14⁸⁸
- Reg. 29.90 Pr. Table Lamps Pr. 24⁸⁸
- Reg. 14.95 Tree Lamps Ea. 9⁸⁸
- Reg. 29.95 Pole Lamps . . . Ea. 19⁸⁸
- STIFFEL Reg. 35.00 Table Lamps . Ea. 28⁰⁰



see Our Complete Lamp Selection Today

<p>Bissell Carpet Sweeper \$12.95</p> <p>An ideal gift for the home, makes small clean up jobs easy. Popular Grand Rapids model.</p>	<p>Sofa Pillows \$1.00 Ea.</p> <p>Colorful throw-pillows — in variety of colors. Kapok filled.</p>	<p>Feather-Filled Bed Pillows \$5.88 Pair</p> <p>Big plump feather-filled pillows, always a welcome gift.</p>	<p>9x12 — Foam Back Tweed Rugs \$29.88</p> <p>Choice of Brown — Beige — Green — Gold or Charcoal tweed.</p>	<p>Cosco Card Tables From \$10.95</p> <p>Sturdy tubular frame, plastic upholstered top tables in choice of colors. 30 1/2" square, 33" queen size table \$12.95, 40" round table \$17.95.</p>	<p>Cuddle King Baby Seat \$4.95</p> <p>For tending — feeding — carrying — driving. Adjusts to 4 positions. A gift new mothers will use every day.</p>	<p>Ethan Allen Deacons Bench \$47.50</p> <p>46" long, of solid maple — nutmeg finish — a beautiful accessory for the home.</p>	<p>Ethan Allen Tables Reg. \$35.90 \$29.95</p> <p>Choice of lamp — step maple with spoonfoot legs.</p>
--	--	---	---	---	---	--	--

NO MATTER WHAT... A TABLE... A CHAIR... A LAMP — or Whatever It May Be! If You Want the Finest — a Gift for the Home — You'll Find It At PEARCE'S!

<p>Sealy Golden Sleep MATTRESS 39.88</p> <p>Compare with mattresses selling at 59.50. Button-free top — Edge guard supports — Heavy ticking — Full or twin size. Matching box spring 39.88.</p>	<p>Sealy Maple Twin HOLLYWOOD BED 69.95</p> <p>Includes — Maple headboard — Innerspring mattress — Box spring and steel bed frame.</p>	<p>3 Year Size CRIB & MATTRESS Reg. 49.99 39.88</p> <p>Has adjustable steel spring — Drop side — Full panel styling — Wax birch finish — Includes waterproof innerspring mattress.</p>	<p>Ethan Allen Gov. Winthrop DESK Reg. 129.00 115.00</p> <p>Beautifully designed drop lid desk in solid maple with hand rubbed nutmeg finish.</p>	<p>Ethan Allen GOSSIP BENCH Reg. 37.00 33.00</p> <p>Mom will love one of these handy telephone benches in solid maple — Nutmeg finish.</p>	<p>Leather Top DRUM TABLE Reg. 39.95 32.88</p> <p>Genuine leather top — combined with traditional mahogany makes this a beautiful accent piece for the living room. 26" diameter top.</p>	<p>5-PC. MODERN DINETTE 69.88</p> <p>Plastic top extension table in choice of colors — bronze or chrome — 4 chairs with upholstered seats and backs. See our complete selection of dinettes.</p>
<p>Maple BUNK BED 89.00</p> <p>Can be converted to twin beds — Includes springs — Guard Rails and ladder — And Choice of foam or innerspring mattresses.</p>	<p>Modern DESK Reg. 89.95 69.88</p> <p>A beautiful desk with Formica top — Sides and drawer fronts — Limed oak finish.</p>	<p>Beautiful PICTURES from 2.00 Ea.</p> <p>See the biggest selection of pictures in the area. Choice of many subjects, sizes and styles.</p>	<p>HASSOCKS from 4.95</p> <p>Just received huge shipment of hassocks of all kinds — Solids, bench and storage styles — Choice of colors and sizes.</p>	<p>OPEN EVERY NIGHT 'TIL 9:00 EXCEPT SATURDAY</p> <h1>Pearce's</h1> <p>QUALITY AND SERVICE SINCE 1881</p> <p>329 W. WASHINGTON ST. — MARQUETTE — CA 6-9956</p> <p>NO MONEY DOWN UP TO 36 MONTHS TO PAY</p> <p>FREE DELIVERY IN UPPER MICHIGAN</p>		

IDEAL CHRISTMAS GIFTS — Electric Hair Dryers — Toasters — Can Openers — Percolators — Fry Pans — Steam Irons — Griddles — Sweepers

<p>WESTINGHOUSE Hair Dryer \$19.95</p> <p>Portable with hat box carrying case — has 4 settings for hot, warm, medium or cool — carrying strap and extra long cord — permits moving about room while hair is drying. Quena size hood for any hair do.</p>	<p>WESTINGHOUSE Portable Mixer \$12.95</p> <ul style="list-style-type: none"> ● Powerful 3-Speed Motor ● Opens Center Non-Clog Beaters ● Beater Ejector Button ● Removable 6 Ft. Cord 	<p>WESTINGHOUSE Electric Can Opener \$12.95</p> <p>A completely automatic can opener that power pierces, turns the can & shifts itself off. Opens cans of all sizes.</p>	<p>WESTINGHOUSE Elec. Percolator \$18.95</p> <p>The unusual style of this beautiful chrome & black coffee maker will complement any dining room table. Makes 4 to 10 cups of coffee exactly as you like it, time after time.</p>	<p>WESTINGHOUSE Instant Sweeper \$29.95</p> <p>Handier than a kitchen broom — and a thousand times more efficient. The new Instant Sweeper is just right when job is too small for a broom and too big for a vacuum. Any housewife will be delighted to get one for a gift.</p>	<p>WESTINGHOUSE Toaster \$18.95</p> <p>All chrome case with black plastic handles. Two slice, accurate color control dial. Crumb clean-up door on bottom.</p>	<p>WESTINGHOUSE Steam 'n Sprinkle Iron \$21.95</p> <p>With tap water level indicator. — use just plain tap water. Sprinkles on any setting. One dial control for wash n wear, steam or dry settings.</p>	<p>WESTINGHOUSE Long-Life, Non-Stick Griddle \$26.95</p> <p>Cook without added fat. Ideal for cooking eggs, pancakes, sausages, hamburgers and steaks.</p>	<p>HOOVER Constellation Vac. Cleaner \$37.88</p> <p>Complete With Attach.</p>
--	---	--	--	---	---	--	--	---

Exchangers Hold Party For Orthopedic Children



Members of the Marquette Exchange Club each year stage a Christmas party for children of the orthopedic section of the Sandy Knoll School. The event this week was conducted in the Northwoods Restaurant, and here James H. Luke (upper left) sings along with the young-



Santa Claus made his appearance at the Exchange party for the orthopedic youngsters, and here he poses with some of the happy children in wheelchairs. Santa came down the hill and entered the back door, bringing with



Shown carrying the children into the restaurant are Exchangers (from left) Carl Menze, James R. Smith and Jack McCracken. The Exchangers arranged for the complete evening's entertainment for the children.

Three Motorists Get Tickets In Four Area Car Crashes

Three motorists were given tickets, a minor injury resulted and eight vehicles were damaged in four area traffic mishaps reported this morning by state police from the Marquette post.

1. At 1:30 yesterday afternoon a truck being driven by Joseph Bartol, 40, Moran St., Marquette, was involved in collision with a transport truck operated by Ralph Batterton, 52, Green Bay, about 200 feet east of County Road HD, in Marquette Township.

Batterton suffered minor injuries (details were not learned) and sought his own treatment. State police said Bartol was in the right lane and began making a left turn as Batterton was going to pass him.

Improper Left Turn The left rear of Bartol's 1950 truck and the rear of the transport truck, a 1963 model, were damaged. Both vehicles were driven from the scene.

State police ticketed Bartol for making an improper left turn.

2. A tractor-trailer operated by Roy Fraid, 59, Gladstone, and a car being driven south on U. S. 41 by Rodney Dionne, 38, Route 1, Marquette, were involved in a collision at 2:45 yesterday morning, 1 of a mile north of County Road BH, in Chocolay Township.

State police said Fraid began passing Dionne as Dionne was making a left turn. The left front of Dionne's 1937 station wagon and the right rear of Fraid's 1963 vehicle were damaged. Both vehicles were driven from the scene.

Improper Passing Fraid was ticketed by state police for improper passing.

3. At 4:20 yesterday afternoon a car being driven west on U. S. 41 by James Caron, 40, Watersmeet, struck an automobile operated by Marvin Wommer, 43, Route 1, Negaunee, 3 of a mile west of the Lake Superior & Ishpeming Railroad Co. overpass, in Negaunee Township.

State police said Wommer had been parked on the shoulder of the roadway and had driven into the right lane. He started to make a left turn and in doing so his car was hit by Caron's vehicle.

The right front and side of

gun shells, tools, transistor radios, flashlights, gloves, lighters, and other items from the cars, he said. Gauthier said that only two of the cars were entered by breaking the side vent windows. All of the other automobiles had been left unlocked. The investigation was conducted by Gauthier and Patrolman Joseph Levandoski. The case has been turned over to county juvenile authorities.

The Mining Journal 166

Published by THE MINING JOURNAL CO., Ltd., daily except Sunday and legal holidays at Marquette, Michigan and especially devoted to Upper Peninsula interests.

MEMBER OF THE ASSOCIATED PRESS. The Associated Press is entitled exclusively to the use for republication of all the local news printed in this newspaper as well as all AP news dispatches.

Subscription rate BY MAIL. All Zones: \$1.75 per month, \$5.25 two months, \$11.75 three months, \$20.00 six months and \$35.00 yearly. By CAR: \$1.75. All Zones: 45¢ per week, \$1.95 one month, \$5.85 three months, \$11.70 six months, and \$23.40 yearly. Address All Mail Subscriptions, change of address, Forms 3579, to: The Mining Journal, 219 Wash. St., Marquette, Mich.

Dr. Finch Takes New Prison Post

Dr. Russell L. Finch, physician at the Marquette State Prison, has left his post here to take over as medical director at the Michigan Reformatory at Ionia.

This leaves the Marquette

ned: "Graceful under pressure."

"I think he was everything I would want to be, everything I'd want my son to be," said McNamara. "An intellectual, with a very rare talent for translating thought into action. Witty, fun-loving, with a passion for excellence. He was that in times of crisis. He was that at all other times."

NBC Signs Thomas For 5 Specials

By CYNTHIA LOWRY

NEW YORK (AP) — Danny Thomas' departure from CBS at the end of this season for NBC, announced Wednesday, caught many people by surprise. For several seasons, the prosperous Thomas, who has a substantial interest in four television series besides his own "Danny Thomas Show," has been threatening to quit weekly television.

Five Specials

Thus, when Thomas announced recently he would like to wrap up the 10-year-old series and appear in occasional variety specials, no one—except perhaps NBC—took him seriously.

His new contract with NBC is a long-term one, calling for five variety-type specials next year.

NBC also has made a deal with Jack Benny that will leave a hole in CBS' Tuesday night schedule next season.

Secretary of Defense Robert S. McNamara used the same phrase three times Wednesday night to describe John F. Ken-

State Prison without a resident physician. However, Warden Raymond J. Buchkoe said applications are now being considered by the Lansing office of the Michigan Department of Corrections, and the opening is expected to be filled in the near future.

Dr. Finch first came to the Marquette State Prison as a resident physician in 1922, remaining here for two years. He then entered private practice in Lansing, staying there until the late 1940s, when he became medical director for the Michigan Department of Corrections.

Returned to Private Practice

As such, Dr. Finch also served as chief physician for the Jackson State Prison.

He returned to private practice in 1953, and last June, on retiring from private practice, he had intended to go to the Michigan Reformatory in Ionia. This opening did not materialize until December, however, and he came to Marquette instead, staying here until the Ionia post opened.

Advertisement for Seven-Up featuring the slogan 'The more Seven-Up the merrier!' and an image of a 7UP bottle. Below the image is the text 'AROLA BOTTLING WORKS INC. REPUBLIC, MICHIGAN'.

Television.. Radio

Cable TV viewers will find their stations on different channels as follows: Ch. 6 becomes Ch. 5 on Cable — Ch. 11 becomes Ch. 4 and Ch. 5 is Ch. 2.

TELEVISION PROGRAMS TONIGHT - - - TOMORROW

Table listing television and radio programs for Thursday Evening and Friday. Thursday programs include CBS News, Stogees 'n Cartoons, Movie Cont., News/Ron Cochran, Vince Lombardi Show, Huntley-Brinkley, Leave It to Beaver, Password, Temple Houston, Elnstones, Rawhide, Donna Reed Show, Dr. Kildare, My Three Sons, Perry Mason, Jimmy Dean Show, Hazel, The Nurses, Suspense Theatre, Caesar & Adams, Thurs. Nite Movie 'The Marauders', News, sports, weather, 10 p. m. News, Tonight Show, Superior Showcase, 'Up In Central Park', News, weather, sports, Walter Winchell File. Friday programs include Today Show, Capt. Kangaroo, CBS News, Say When, Romper Room, I Love Lucy, Word for Word, The Real McCoy's, Concentration, Pete Is Right, Price & Gidys, 8:10—Value Rated Tune Time, 8:25—Mich. News, 8:30—Morning Bell, 8:35—Paul Harvey, 9:00—Breakfast Club, 9:55—ABC News, 10:00—Michigan News, 10:05—Hits For The Mrs., 10:55—ABC News, 11:00—Hits For The Mrs., 11:25—New Faces, 11:30—Northside Shopper, 12:00—Weather Summary, 12:05—Mich. News, 12:10—World News, 12:30—Sports Review, 12:35—Bowling Hi-Lites, 12:55—Lunchon Melodies, 1:00—Paul Harvey, 1:05—Mary Blaine, 1:30—Showcase, 1:55—ABC News, 2:00—Showcase, 2:25—Flair Reports, 2:30—Showcase, 2:55—ABC News, 3:00—Michigan News, 3:05—Showcase, 3:55—ABC News, 4:00—ABC News, 4:55—ABC News, 5:00—Mich. News, 5:05—Flight Log, 5:25—News Capsule, 5:30—Flight Log.

9 Juveniles Admit Thefts From Autos

Nine juveniles who reportedly admit stealing from 40 parked cars have been apprehended by city police.

The boys, from 14 to 16 years of age, police said, entered the cars during the past three months.

Most of the cars were parked in the 1700 block on Presque Isle Ave. and the rest were scattered throughout North Marquette, City Det. Marvin J. Gauthier said.

Estimated value of the materials taken from the cars is \$400. Some of it has been recovered. The boys took beer, groceries,

Advertisement for Champ Hats featuring a hat and the text 'for the ideal gift... a Champ hat gift certificate'. It includes the name 'CHAMP HATS' and 'FOR THAT SMART NEW LOOK. SHOP GETZS'. Address: 218-220 S. FRONT ST. MARQUETTE.

Crossword puzzle titled 'Canine Critters' with clues and a grid. Clues include '12 Rotz by exposure', '13 Bird', '14 Fancy', '15 Hot', '16 Milk-curdling substance', '17 Mariner's direction', '18 Swiss river', '19 Worm', '20 Emperor', '21 Kind of sore', '22 Prize', '23 Falsifier', '24 Fabric', '25 High home', '26 Chikan workman', '27 Church dignitary', '28 Renovate', '29 Beginner', '30 Canine critter', '31 Miss West', '32 Dutch measure', '33 Reluctant', '34 Posture', '35 Counselor', '36 Verb furus', '37 Dresses feathers', '38 Scoffs', '39 Drunkards', '40 God of love', '41 Automobile accessory', '42 Crazy hill', '43 Samoet's trainer', '44 Fortification', '45 Tendril (bot.)', '46 Poem', '47 Century (ab.)', '48 Hawaiian deity', '49 Summers (R.)', '12 Rotz by exposure', '19 Grow old', '22 Epistle (ab.)', '23 Pronoun', '24 Closer', '25 Blow with open hand', '26 Row', '27 Uncommon', '28 Famous British school', '30 Small weight', '31 Wintry precipitation', '32 Consume', '33 Wild animal', '34 High home', '35 Chemical suffix', '39 Epoch', '40 Musical note', '42 Trials', '43 Mount', '44 Above', '45 Masculine nickname', '47 Handle (Fr.)', '48 Genus of maples', '49 Disorder', '51 Route (ab.)', '52 Mate offspring', '54 Number', '55 Chemical suffix'.

our store is a Christmas
WONDERLAND
Holiday Trial Offer!



The Wonderful New General Electric

Mobile Maid[®] DISHWASHER

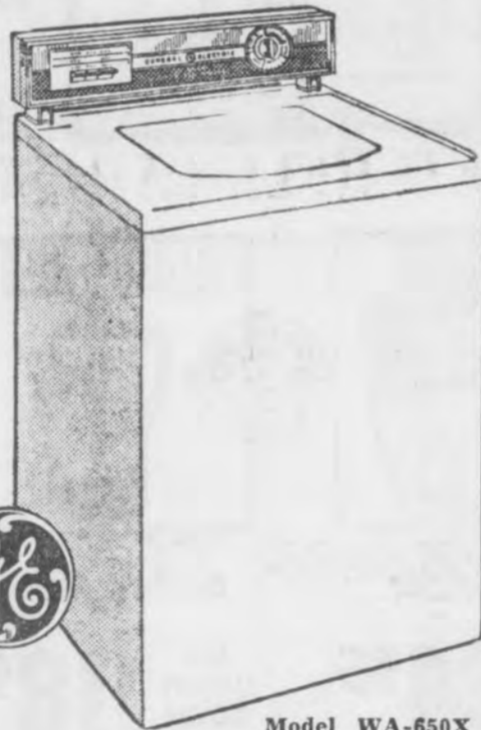
will give her the time to be the wife and mother she wants to be!

- Exclusively designed Four-Level Action—no scraping, no pre-rinsing.
- Lift-top rack—for easy loading.
- New Faucet-Flo connector—lets you use faucets while dishwasher is in use.

MOBILE MAID DISHWASHERS START AS LOW AS **\$149⁵⁰**

Buy it and let her try it for Christmas...

Give your wife more time with you and the family! Get any G-E Mobile Maid Dishwasher and use it in your own home—right through the holiday season. If not completely satisfied, return it within 45 days of purchase for full refund!



G.E. WASHER

- Three Wash Temperatures
- Two Rinse Temperatures
- Two Complete Wash Cycles
- 6, 10 and 12-Pound Load Settings
- Filter Flo Lint Removal
- Lid Safety Switch
- Porcelain Inside and Out
- 5-Year Transmission Guarantee

CARLOAD SALE PRICE

\$199⁵⁰ WITH TRADE

Model WA-650X Other G-E Washers as low as \$179.50 w/t

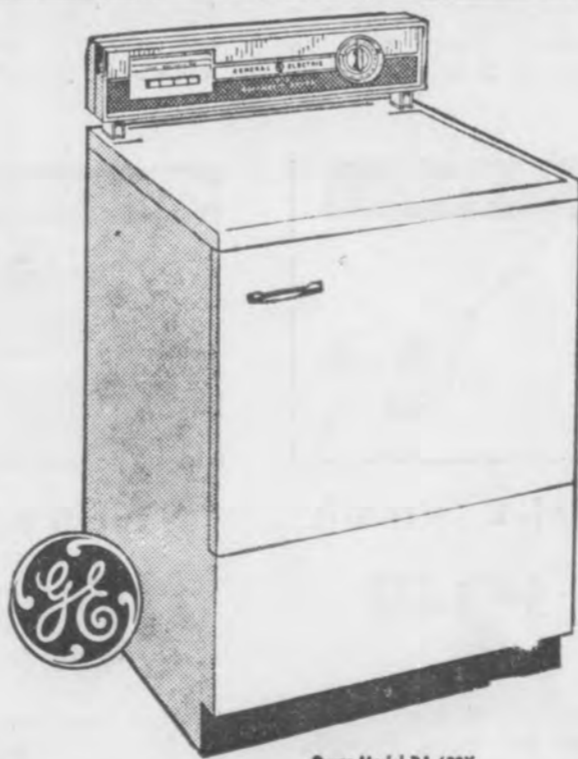
G.E. DRYER

- Hi Heat, Low Heat, No Heat, Economy Settings
- Huge 12-Pound Capacity
- Either 110 or 220 Volt Hook-up
- Double Safety Switch—Child Safe
- Lint Catcher Up Front for Easy Access
- Porcelain Inside and Out

CARLOAD SALE PRICE

\$159⁵⁰

Other G-E Dryers as low as \$129.50 w/t



Dryer Model DA-620X

Dear Dad:

This message is directed primarily to you because... Well... Read on, Dad. This Christmas we'd again like to suggest that you give your wife the very thing she can use the most. Ask her and she will tell you. It's TIME. Yes, a little extra time for herself. Unfortunately a woman's work is every day. Kids are just as demanding on Saturday and Sunday as during the week. Meals still have to be cooked. Dishes still have to be washed.

However, you can give her some of that valuable time—up to 10 hours a week more, if you give her a new General Electric Portable Dishwasher. What's more, you can easily double this by adding a General Electric Automatic Washer or Clothes Dryer. Expensive? Not at all. Look at some of the representative models and prices in this ad. Appliance prices have never been lower than they are today in spite of rising prices of just about everything else.

One thing more. When you buy a General Electric Appliance from us, you are buying from a store that prides itself in giving the best possible service after the sale. General Electric's extensive guarantees and our efficient service department combine to give you the best service in this area.

How about it, Dad. Don't you think you ought to come in and see us this week? A \$10.00 deposit holds any appliance of your choice on lay-a-way for Christmas delivery.

Yours for better living electrically.

THE STAFF
NORTHLAND APPLIANCE

LIFE SIZE SANTA



• 5 FEET 4 INCHES TALL
• MADE OF HEAVY, RUGGED PLASTIC
• WATERPROOF. Use indoors or outdoors.
• LIGHTED INTERNALLY. Glows in the dark.
\$5 with the purchase of any General Electric major appliance, television set or console stereo phonograph. \$29.95 when purchased alone.

SEE THESE AND MANY, MANY OTHER FINE VALUES THROUGHOUT THE STORE

★ TELEVISION ★ STEREO
and
MAJOR and MINOR
GIFT APPLIANCES

ALL WITH GUARANTEED LOCAL SERVICE

SAVE MORE, BUY THE PAIRfor Only **\$349.50**

The Magic Wand of Family Happiness and Christmas Cheer is in your hand, when you present your wife and family with a time and energy saving gift from...



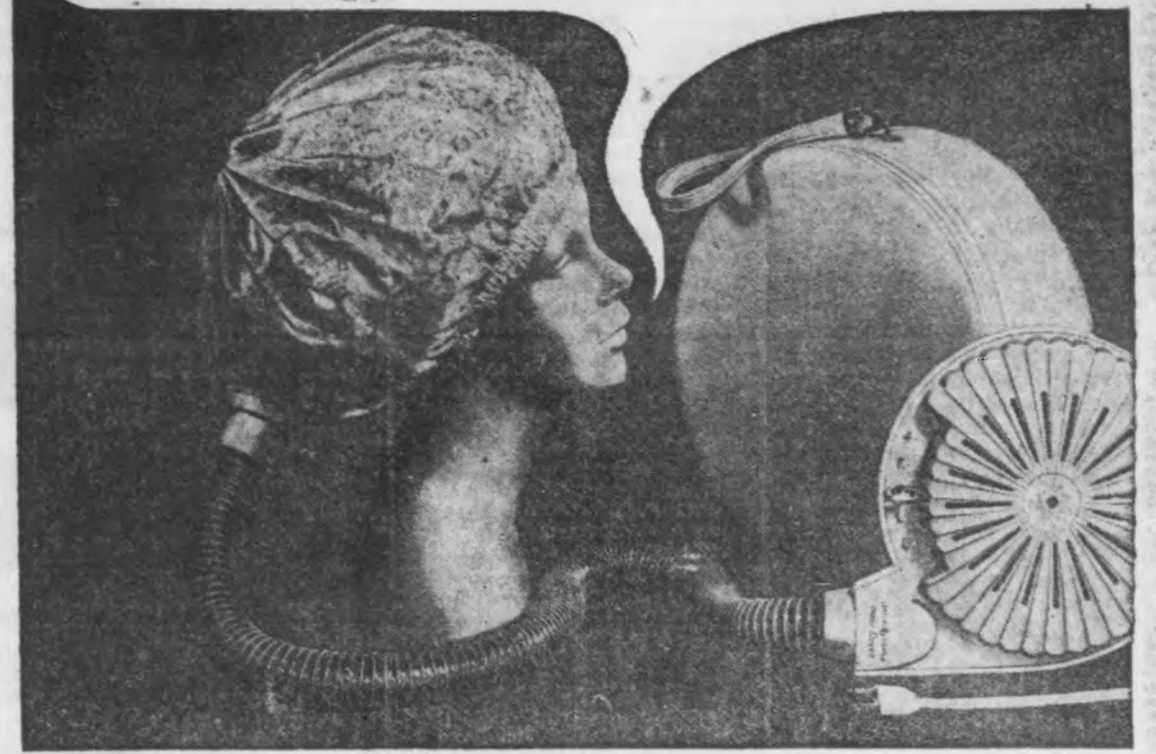
NORTHLAND APPLIANCE

511-517 N. THIRD

CA 6-7981

MARQUETTE

This I'd Like For Christmas
A G.E. HAIR DRYER



AND WHY NOT! PRICED AS LOW AS **\$12.90**
"TO FIT ANY BUDGET" MODEL HD4

IF SHE IS A LUCKY GIRL AND ALREADY OWNS ONE OF THOSE WONDERFUL GENERAL ELECTRIC HAIR DRYERS...

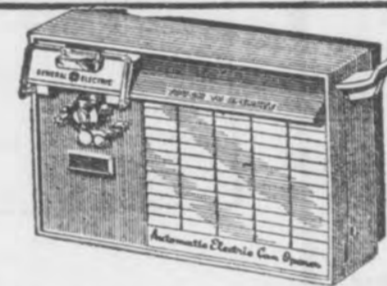
HOW ABOUT THESE SPECIALS?



STEAM AND DRY IRON
MODEL F60

- Steams up fast
- Weighs only 3 lbs.
- Handy fabric dial

only **\$9⁹⁹**



ELECTRIC CAN OPENER
• Fast, easy, safe—makes a great gift
Model EC 4B **\$13.50**



PEEK-A-BREW COFFEE MAKER

- It counts the cups

Model P33

\$16.95



COFFEE MAKERS

Perfectly delicious coffee everytime with the convenience, capacity, styling and quality of G-E COFFEE MAKERS.



AUTOMATIC COFFEE MAKER

- 3 to 9 cups of delicious coffee
- Knuckle guard handle
- Drip proof spout
- Brew selector—detachable cordset

Model P31

\$13.86



DELUXE COFFEE URN

- Giant 12-30 cup capacity
- All stainless steel for best coffee flavor
- Handy indicator light
- No-drip faucet
- Attractive, elegant styling

Model CU1

\$33.80



SKILLETS

Baking, Frying or Stewing, G-E Skillets provide all of the convenience features to make a complete meal right at your table.



- Fries, bakes, stews with accurate heat control
- Finest controlled heat cooking
- Complete with control, cordset and lid

Model C114

\$17.50



- High dome lid for greater capacity
- Bakes, fries, stews right at your table
- 2 position lid helps control cooking spatter

Model C127

\$24.70



MIXERS & BLENDERS

Whatever the mixing or blending chore can be, G-E Mixers and Blenders provide Quality, Convenience and Performance.



CUSTOM PORTABLE MIXER

- 3-speed finger tip control
- Weighs less than 3 pounds
- Powerful G-E motor
- Push-button beater ejector

Model M57

\$9.99



ALL PURPOSE MIXER

- Powerful motor for heavy duty mixing
- Lightweight mixing head for use as portable
- Complete with 2 BIG Mixing bowls

Model M55

\$25.50



CAN OPENERS & SHARPENERS

For the finest in convenience see the full line of G-E Can Openers and Sharpeners.



DELUXE COUNTER TOP STAND AUTOMATIC CAN OPENER

- Automatically pierces cans
- Takes all sizes and shapes
- Handy cord storage
- Governor controlled motor

Model EC8

\$19.95



KNIFE AND SCISSORS SHARPENER

- Sharpens knives quickly, easily, safely
- Ceramic magnet positions knives
- Sharpens scissors to a hollow-ground edge
- Long life G-E motor

Model NS2

\$12.50

ALL PRICES INCLUDE GUARANTEED LOCAL SERVICE
"BUY IN CONFIDENCE AT A REAL APPLIANCE STORE"

Northland Appliance

511-517 NO. THIRD

PHONE CA 6-7981, MARQUETTE

Science Fair Set At Northern; New Limitations Told

Saturday, April 11, 1964, has been selected as the date for the annual Northern Michigan Science Fair to be held in the Northern Michigan University Fieldhouse.

Sponsored by Northern Michigan University, the fair is planned annually to serve as a showcase for the achievements of young scientists in the Upper Peninsula.

Next year's fair is to be limited to junior and senior high school students in the Upper Peninsula. In previous years, students from grades kindergarten through six also participated.

Winners in the Northern Michigan Science Fair will be eligible to participate in the National Science Fair with which the Northern Michigan Fair has been affiliated.

The National Fair will be held May 6-9, 1964, in Baltimore, Md. It is hoped that local sponsors of the winners will defray the expenses of participation in the National Fair.

Scientific Papers
In addition to the science exhibits, the fair will include the presentation of scientific papers by high school students. The papers will be pre-selected by the NMU science departments.

Students planning to participate in this phase of the Science Fair are asked to prepare a subject material outline to be submitted to William Wright, Northern Michigan Science Fair

coordinator, Northern Michigan University, by Jan. 15.

Every effort will be made by NMU to provide judges for locally sponsored science exhibits for children in grades kindergarten through six.

Plans are under way to conduct a conference of Upper Peninsula Science Teachers concurrently with the Northern Michigan Science Fair.

Legislature Ordered To Work On

LANSING (AP) — Under threat of being called into another special session after Christmas, a Legislature torn by partisan wrangling was ordered today to continue its work on implementation of the new Constitution.

Gov. George Romney and legislative leaders agreed on an emergency plan to keep going

JEAN'S JEWELRY

ELGIN CLOCKS
 Decorator cordless electric, \$18.95 up
 Cuckoo, \$29.95 up
 Strike and Chime, \$29.95 up
 Hanging Strike, \$49.95 up
 Kitchen cordless electric, \$27.50 up
 Travel alarm, \$5.95 up
 Weather instruments, \$9.95 up

also see our large selection of ELGIN watches from \$19.95



PRICES PLUS P.D. TAX

JEAN'S JEWELRY
118 S. FRONT ST. MARQUETTE

at least one more day on a list of issues vital to the new document.

Technically, the bills died at midnight when both chambers adjourned—the House at the end of its bitterest day of political battling of the entire year.

Basic Problem
But in a post-midnight meeting in his office, an angry Romney told Republican leaders and Democratic Lt. Gov. T. John Lesinski he would call another session between Christmas and New Year's Day unless they found a way to keep the bills alive.

"This legislation is far too important to the future of this

state to have it sacrificed as a result of parliamentary maneuvering," said the Governor.

The basic problem lay in the fact that the two chambers had not agreed to adjourn the same way.

House Republicans, using their voting edge in almost brutally-effective fashion, rammed through a series of complicated parliamentary moves that sustained the session until Dec. 24, with work to continue on the revived bills.

Senate Calls Halt
But the Senate, adhering to previous plans, called a halt to all action on bills at the midnight deadline for final passage

and intended only to return for formal adjournment Dec. 24.

Lesinski and GOP Senate leaders disagreed with House Speaker Allison Green, R-Kingston, and his aides on whether the session could continue.

In their meeting with Romney, they finally consented to the issuance of orders for all lawmakers to be present at 10 a.m. today.

Key Bills
When the gavel fell in each chamber at midnight, a number of key bills were still in a limbo of House-Senate dispute, among them the State Appeals Court and Civil Rights Commission measures.

Police Probe Burglary In Store Here

City police are investigating a burglary of the Kirby Sales and Service store, 151 Baraga Ave.

A total of \$42.23 was taken from an unlocked money box which was stored in a desk drawer, City Det. Mar-

vin J. Gauthier said today.

Marvin Meyers, 2283 Beaudoin St., discovered the burglary at 1 p. m. yesterday. He said entry was made sometime after midnight.

Entry was made by breaking a rear window, in the south side of the building.

Red Wing Freed From Thick Ice In Lake St. Clair

DETROIT (AP) — The Canadian freighter Red Wing rescued the cement carrier J. B.

Ford from four-inch ice in Lake St. Clair Wednesday by breaking the ice with the wash from her propellers as she raced past the Ford.

The Red Wing then cleared a path for the Ford through the Detroit River and into clear water in Lake Erie.

The fully loaded Ford had called for aid after ice forced her out of the shipping channel and against the underwater bank of the dredged-out channel, causing a list.

Pollinating insects are essential for seed development in carrots, radishes, turnips, cab-

Gambles The Friendly Store

LAST MINUTE GIFT IDEAS!

Selections are still good and the prices are right—buy on time...

Santa's Special  Table & Chairs Gaily decorated 15 x 20" table top. Blonde birch finish. Two matching chairs. 4⁹⁵	 Popper Toy 1⁷⁸ Tops in push toys! Pop-pop-popping wooden balls delight ages 1 to 3. Safe, simple.	 Musical Rocker 5⁷⁷ A lulling tune plays as child rocks. Chair is hardwood with light maple finish. 21" H.	Santa's Special  Odd Egg TV favorite! Battery-powered Egg moves ahead when ball hits right. 5 balls. 7⁹⁷	 40' Hiawatha \$3⁹⁸ Sled streamlined for speed, has closed runners for safety. Deck is hardwood.	 Spin Target 88^c 4 colorful high-impact plastic jungle animals spin when hit. Set has pistol, 3 cup darts.	Santa's Special  RED WAGON Sturdy steel wagon is a tot's playtime delight! Rubber tires. Box 12 1/2" x 7 1/4" W. 99^c
 GREEN CHALK BOARD 2⁶⁶ Big green chalkboard is easy to read, easy to write on. 25"x19". With chalk, eraser.	 "Ruthie" Doll 2¹⁷ So lifelike and lovable. With rooted curly hair, moveable arms, legs. Vinyl plastic. 13" tall.	Santa's Special  INFLATED BALL Bright and bouncy 6-inch ball is just right for rolling, kicking and tossing. 77^c	 Smoker Rifle 2⁵⁸ Automatically makes exciting smoke, noise. Lever action! Sturdy steel. 31" long.	 Lullabye Baby 3⁹⁷ Her arms and legs move as music box inside her plays "Brahms Lullaby". 12" tall.	 Table and Chairs Child-size for playtime fun. 24 1/4" vinyl table top, bronzed legs. 2 matching chairs. 11⁹⁵	
 "Pinto" Horse Rides cowboy! Has high tension springs for a realistic ride. Sturdy plastic body—32" long. 12⁹⁹	 10' Tricycle 9⁹⁵ Kids really go for the red, red color and the sleek, modern styling. Adjustable saddle.	 Can-O-Matic 4⁸⁸ Electric can opener play food set. Safe—kids are great. Battery-operated.	 Double Fun Set 3⁸⁸ It's a chalkboard with numbers, alphabet, chalk, eraser—or pegboard with mallet, pegs.	 Red Scot Car 16⁹⁵ Racing car thrills with safety first construction! Easy to pedal. 3/4" steel tube frame.		

Sunbeam  Steam-Dry Iron NO MONEY DOWN \$16⁸⁸ Steams longer—holds more water! New "Wash'n wear" settings for faster ironing.	TOASTMASTER  Portable Mixer NO MONEY DOWN \$19⁸⁸ Lightweight, powerful! 3 speeds, handy finger-tip controls. 2 colors.	DOMINION  Hair Dryer NO MONEY DOWN \$24⁹⁵ Luxurious luggage case. 5 controls. Whisper-quiet, lightweight. Large hood.	CORONADO  Coffee Maker NO MONEY DOWN \$18⁹⁵ Automatic! Brews 4 to 10 cups of coffee, keeps them hot. Strength selector.	 Travel Clock \$4⁹⁸ Plus Tax 40-hour clock has luminous dial, sturdy snap case with white or pigskin tan finish.	CORONADO  Electric Blanket Regular \$11.88 \$9⁸⁸ Washable, non-allergenic. Nylon binding. Single control, double bed size. Colors!
ARTISAN  Deluxe Hammer \$4⁶⁹ Cushioned grip, balanced steel head, curved claw. Heavy duty 16-oz. size.	ARTISAN  Adj. 8" Wrench \$2⁴⁹ Drop-forged heat-treated steel for extra strength. Sure-grip jaws. Chromed.	ARTISAN  Torch Kit \$8⁸⁹ Prepare torch—so handy around home or shop. With lighter, etc.	 Seat Belts Reg. \$5.69 \$4⁸⁸ Meet SAE, gov't. specifications. 100% nylon webbing, steel fittings. Fits all cars.	 Picnic Kit \$9⁹⁵ Includes two 1-qt. vacuum bottles, large plastic storage box. Zip-top case.	 Sleeping Bag \$12⁸⁸ 2-lb. "Dacron" Fiberfill. Cotton poplin cover. 100" zipper. 36 x 80" cut size.

REG. \$9.88—RED, VINYL UPHOLSTERED PLATFORM ROCKER Sale Price \$8.88	REGULAR \$3.38 TOOL BELT WITH TOOLS Sale Price \$2.88
REG. \$4.99 — CUPBOARD — STOVE — REFRIGERATOR KITCHEN SETS Sale Price \$3.89	A REAL THRILLER (Players Actually Play The Game) HOCKEY GAME \$12.69
REGULAR PRICE \$2.19 KITCHEN STOVES Sale Price \$1.89	REG. \$12.88 — BATTERY OPERATED PISTOL & TARGET ELECTRONIC TARGET GAME \$9.95
REG. \$10.88 — LARGE SIZE DOLL BUGGIES Sale Price \$9.88 Also Smaller Sizes, Lower Prices!	LARGE ASSORTMENT OF FISHER PRICE PULL TOYS Priced \$1.78 Up To \$2.97
DOLL BUNK BEDS Double Bunks \$6.88 Single Bunks \$3.48	3 BELL CLUSTER — TWINKLING WINDOW & DOOR LIGHTS Trim Piece \$2.44

GIFTS FOR EVERYONE ON YOUR LIST—NO CASH NEEDED AT GAMBLES

Installation Held Here For Squires

Father Jodocy Circle of the Columbian Squires, Marquette, held its installation of officers meeting last night, with the solemn ceremonies conducted by Albert Piasecki, chancellor of the Knights of Columbus Council here.

Robes and medals were provided for the officers at the ceremony.

Activities for the month of December have been listed by Squire officers. They are: Physical — Film on Indianapolis auto race; alternate, pool table tournament.

Civic Cultural — Tour of WLUC-TV late in the month.

Social — Private skating party for Squires and dates at the Palestra Dec. 22. Squires and guests are invited.

Religious — Offered a Mass for President John F. Kennedy, Dec. 4.



A POCKET-SIZED BOOKLET OF 1,500 INVESTMENT FACTS

Our new, free Security Buyer's Guide recommends securities for almost every investment objective

The December issue of this helpful booklet suggests 261 securities which our Research Department believes are suitable for various investment objectives. Common stocks are listed under: Relative Safety of Principal (25); Current Income (27); Capital Gains, Good Quality (90); Capital Gains Potential, Speculative (80).

This 32-page Guide also contains a selection of Senior Securities: 8 municipal bonds; 10 corporate bonds; 9 convertible preferreds and debentures; and 12 preferred stocks.

A feature of unusual interest is the Stock of the Month: an oil recommended for the income-oriented portfolio. A discussion of current market trends is also included.

For your free copy of our informative Security Buyer's Guide, a Paine, Webber exclusive, mail this advertisement.

NAME.....
ADDRESS..... PHONE.....

Paine, Webber, Jackson & Curtis
ESTABLISHED 1879
MEMBERS OF THE NEW YORK STOCK EXCHANGE
104-108 Harlow Block Marquette CAnal 6-2561

Let Water Run If Freezeup Danger Exists, Mullaly Says

Residents have been asked to permit water to run in a pencil-stream in their homes whenever there is a danger of service line freezeups.

This winter all water department customers will receive bills which represent an average of previous consumption. The winter billing system will be in effect until April 15.

Water Department Superintendent Kirk Mullaly said that the winter billing system will encourage residents to leave water running.

To Avoid Inconvenience

"We're starting the winter billing system early in the hope that both residents and the water department can avoid, as much as possible, the inconvenience and cost of freezeups," Mullaly said.

Last winter Marquette had the most frozen service lines that residents can remember. City crews thawed out 650 frozen pipes and an unestimated number were thawed out by plumbers.

Water department crews have already been called out on several "thaw jobs" this month and more frozen pipes are expected because of the cold weather this week.

Snow Like Insulation

Deep snow acts as insulation and will keep most pipes from freezing, but if there's a period with not much snow and very cold temperatures Marquette residents can expect an outbreak of freezeups, Mullaly said.

There's special danger of freezeups when pipes are close to the ground surface or are laid underneath plowed driveways or streets, he said.

He emphasized that residents who have had frequent freezeups at their homes during past winters are especially encouraged to allow water to run this winter.

Dial Removal Unnecessary

In previous years water meter dials have been removed from homes at which pipes freeze frequently. However, because of the winter billing system, it won't be necessary to remove meter dials this year, Mullaly said.

Following the same practice used last year, residents will not be charged for the first "thaw job" done by water department crews.

However, residents will be charged for the second city thaw job if water was not allowed to run continuously.

Although it only takes city crews a few minutes to thaw out a service line, there were more freezeups last year than water department crews could handle efficiently.

Better Equipment

Mullaly noted that the time it takes for a city thaw job will be shortened this year because the city's thawing machine is now equipped with a motorized reel for storing the cable.

It's actually electricity that is used to thaw out a frozen service line. The machine has a capacity of 400 amperes with a cable of fine copper wires, one inch in diameter.

A ground wire is connected to the nearest fire hydrant and another wire is connected at the point at which the frozen pipe enters the home. Because pipe is a poor conductor of electricity, the resistance causes the pipe to heat, Mullaly explained.

Train, Truck Collide, Eight Hospitalized

CLOVIS, N.M. (AP) — A truck-train collision derailed 10 cars of the San Francis Chief. Eight persons remained hospitalized today.

The injured included the farm truck driver, Warren J. Neill, 18, Portales, N.M. A Santa Fe Railway spokesman said the train was traveling about 75 miles per hour. Neill suffered only minor head lacerations and bruises.

Williams Denies Political Reports

WASHINGTON (AP) — G. Mennen Williams, assistant secretary of state for African Affairs, said he does not know anything about reports he might run for governor of Michigan again next year.

Carbon Monoxide Kills Family Of 4 Temperature In City Below Freezing Point 11th Day

CADILLAC (AP) — Carbon monoxide from a faulty furnace killed a family of four in its one-story home on Lake Mitchell here, state police said today.

Discovered in their beds Tuesday evening after futile attempts by a relative to call them by telephone were Jerry Tuttle, 21, his wife, Bonnie, 20, and their sons, Robert, 1, and Charles, 3 months.

Medical examination ruled them victims of asphyxiation by carbon monoxide poisoning. It indicated the family had been dead at least 12 hours when discovered.

Biting cold temperatures continued today and the weather bureau has forecast "polar bear weather" for the rest of the week.

Today is the 11th day in a row that temperatures have been below freezing here.

The average temperature yesterday was 10, the lowest this winter. It was 14 degrees below normal, with a high of 16, which occurred at 5 a.m., 2:30 p.m., and at midnight, and a low of four degrees.

Previous low average this winter was 12, occurring Saturday, Monday and Tuesday. So far this month the average is 4.2 degrees below normal.

Two Above Here

Overnight the low was two degrees here. At the Marquette County Airport in Negaunee Township, where the high yesterday was 13, it got down to eight below zero this morning.

Snowfall yesterday amounted to 1.8 inches and another half inch had fallen up to 10 this morning. That brought the total

for the month to 20 inches. Normal for the month is 13.5.

Snow depth this morning was an even foot. Noting that most of the 20 inches this month has fallen since it turned cold Dec. 9, Meteorologist Fred Mueller said that the difference between snowfall and snow depth is due to settling.

Winds were 20 miles per hour this morning and blowing snow made driving hazardous. In addition, there's a sheet of ice underneath the snow-covered streets which hasn't had a chance to melt in a week and a half.

Colder Tonight

Four inches or more of new snow are expected by tomorrow morning, with snow flurries and occasional squalls predicted. Some blowing and drift-

ing is likely near Lake Superior.

Tonight the mercury is expected to get down to zero near the lake and to five to 10 degrees below zero inland.

Continued cold temperatures, with snow flurries tomorrow and cloudy skies are predicted Saturday.

City Paragraphs

A stated meeting of the Scottish Rite Bodies will be heard at 7:30 tomorrow evening in the Masonic Temple.

Santa Claus will greet children Saturday beginning at 6:30 p.m. in front of the community building in Chocolay Township. His appearance is sponsored by the Chocolay Lions Club.

U. P. Solon Asks Regulation Of Cable Television

LANSING (AP) — A law to allow the Public Service Commission to regulate pay television transmitted by coaxial cable has been requested by an Upper Peninsula Democrat.

Rep. Russell Hellman of Dollar Bay said: "there is no regulation of this service and a number of peculiar and perhaps abusive practices have occurred," as he requested a bill be drafted covering the situation.

Venetian traders took coffee to Europe early in the 17th Century.

Sawyer Sergeant Facing Difficulties In Yule Leave

NUTLEY, N. J. (AP) — A Christmas holidays visit here with relatives led to complications for Air Force S. Sgt. Elwood Kramer of Forsyth, Mich.

En route from Sawyer Air Force Base in Marquette County, Mich., Kramer and his family lost \$100 in Christmas gifts. Also AWOL.

Also, Kramer was AWOL. He had left one day ahead of his leave, driving here with his wife, Jean, and their two daughters, Barbara, 4, and Laurie, 2.

A box containing the Christmas gifts fell out of the car on the Ohio Turnpike.

A highway maintenance man found the box and it caught up with the Kramers here after being traced to Forsyth, a Marquette County community.

At first Kramer said he didn't leave base ahead of time but then switched.

"I decided to level," he said. "I left the day before my leave began. No excuses. I'm grateful to the Red Cross and the turnpike people."

JEAN'S JEWELRY has the **Perfect CHRISTMAS GIFT** to give...or get!

The big value pocket size ELGIN portable 10 TRANSISTORS ONLY \$19.95

Imagine ten transistor power in a pocket-sized radio! Yesterday it would have been a bargain at twice our low price. But today Elgin's advanced engineering tucks all ten transistors into a trim, slim 5 1/2" x 3 1/4" x 1 1/2". The result? A powerhouse chassis with greater range, better reception than any other portables you can buy. Come in! Compare leading manufacturer's actual specifications and prices. See and hear why only ELGIN will do for you!

- 10 transistors, 2 diodes and thermistor
- Precision Vernier tuning, slide-rule scale
- Extra length antenna
- Oversize speaker

4 penlite batteries, earphone, top-grain leather carrying case—ready to play!

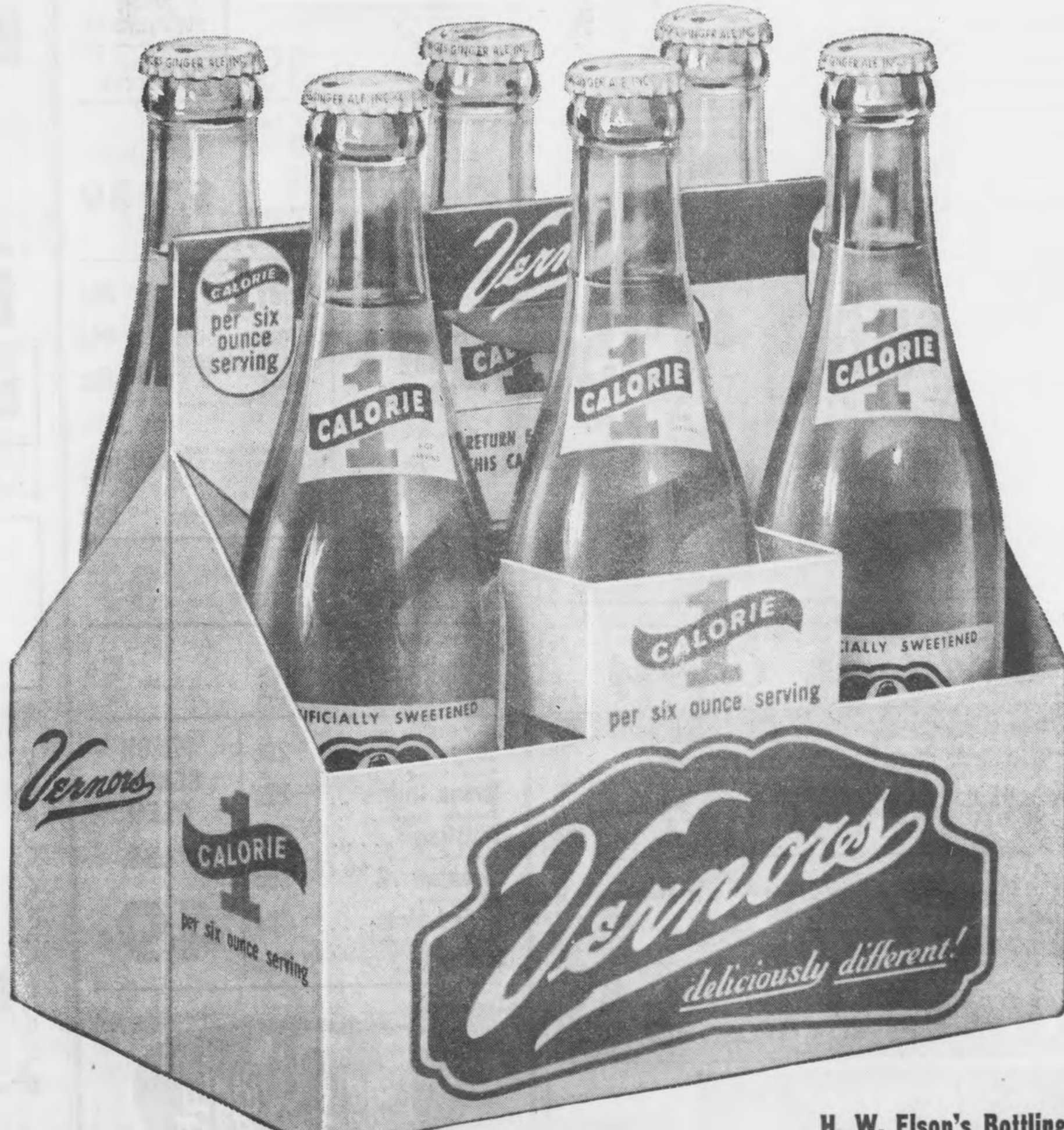
EVERY ELGIN PORTABLE GIVES YOU AN UNCONDITIONAL ONE YEAR GUARANTEE ON PARTS AND WORKMANSHIP.

JEAN'S JEWELRY MARQUETTE
118 S. FRONT ST.

NEW...From VERNORS

Only 1 Calorie per six ounce serving! The famous Vernors Flavor is all there! The only thing we've taken out are the calories! Yes, same Vernors Flavor! Same four year aging process!

Now you can take your choice... New artificially sweetened Vernors 1 Calorie or Regular Vernors! Remember, Vernors for VA VA VOOM! The news is already out and the demand for new Vernors 1 Calorie is tremendous...so if your favorite store is presently sold out, please be patient...keep asking for it...stocks of Vernors 1 Calorie are on their way.



H. W. Elson's Bottling Works
Marquette Ishpeming

County Dimes Drive Chairmen With Poster Girl



March of Dimes volunteers Paul Suomi and Don Ellis, both of Negaunee, shown with Mary Lou Graves, 5, Flint, 1964 National March of Dimes poster girl, victim of birth defect known as open spine. They recently attended a planning meeting at Detroit for the campaign, to be held Jan. 2-31 to fight birth defects and arthritis. The National Foundation-March of Dimes is the largest single national source of private support for research and patient care in these two disease areas.

Number Of Flights At Airport Dips

Flights at the Marquette County Airport in Negaunee Township, affected by the first blows of winter weather, dropped sharply last month. The number was 1,488, compared to 3,091 the previous month. However, reports H. L. Shroeger, Marquette, superintendent-engineer for the county road commission, which supervises the airport program, flights by North Central Airlines remained relatively high, at 192. The airline operations accounted for the arrival of

Five Motorists Pay \$50 Here In Fines, Costs

Five motorists were ordered to pay fines and costs totaling \$50 by Judge Edward H. Dembowski in municipal court yesterday. For failure to stop in the assured clear distance ahead, Lowell H. LaChapelle, 318 Hampton St., ticketed Dec. 12 following an accident on W. Washington St., and Gerald W. Peura, 1516 Lincoln Ave., ticketed following an accident Dec. 11 at the corner of Third and Arch Sts., each paid fines of \$6.30 and costs of \$3.70. Other \$10 Penalties Fines of \$6.30 and costs of \$3.70 also were paid by: James A. Walker, Kingsford, ticketed for failure to yield the right-of-way following an accident Monday at the corner of Fair and Presque Isle Aves.; Tauno S. Laakson, Eben, ticketed for failure to have his motor vehicle under control following an accident Dec. 9 on West U. S. 41, and Paul G. Runsey, K. I. Sawyer Air Force Base, for improper registration plates.

602 passengers, departure of 773 passengers and the transfer of nine passengers. Through the airline, the airport handled 11,027 pounds of mail and 16,062 pounds of express and freight.

There were 112 itinerant aircraft operations during the month, involving 376 passengers. There also were four ambulance flights and 1,180 local aircraft flights.

During the month the airport manager, D. F. Varella, Negaunee, and his assistants spent a total of 803 "man hours" keeping the airport open. A total of 5,888 gallons of gasoline was sold.

By comparison, in October there were 218 airline flights, with 968 arriving and 927 departing passengers, and 268 itinerant, one ambulance and 2,604 local flights.

The airport, through the airline, handled 15,928 pounds of mail and 14,447 pounds of express and freight during the month, with 9,417 gallons of gasoline sold.

Sailor Awarded \$54,000 In U. P. Lawsuit

CHICAGO (AP) — Leonard Ammesmaki, 50, of Superior, Wis., former fireman on a Great Lakes ore boat, was awarded \$54,000 — \$4,000 more than he sought — by a jury for injuries suffered while boarding the vessel at Escanaba, Mich. In his suit, filed in 1958, Ammesmaki had asked for \$50,000. The U.S. District Court suit alleged that when he was returning to the boat Nov. 30, 1956, he fell off the dock and suffered fractures of his right shoulder and ribs. Ammesmaki's former employer, the Interlake Steamship Co., was charged with being negligent in not providing safe access to the ship. Interlake was ordered to pay the \$54,000. The jury ruled the dock owner, the Chicago and North Western Railway, was negligent in allowing the docks to become icy, and ordered it to pay the steamship company \$11,958 in damages.

Two County Officials To Attend Meets

Permission for two county officers to attend meetings of their state organizations was granted by the Marquette County Board of Supervisors at its monthly meeting in the courthouse here yesterday. County Treasurer Bertil Agnoli of Negaunee was authorized to attend the Midwinter Conference of County Treasurers, to be held in Grand Rapids Jan. 13-14. Topics Listed County Clerk Roy C. Lee of Marquette was given permis-

sion to attend the Midwinter Conference of County Clerks which also will be held in Grand Rapids Jan. 13-14. In both cases, the supervisors observed that each county officer is entitled to attend, at county expense, one meeting per year of their state organization. Agnoli said the treasurers will take up, among other items, matters pertaining to implementing the new constitution, county audits, delinquent taxes, veterans exemption affidavits and standard accounting system-reports. Rum Island, Dog Rock, Fallen Jerusalem, Money Rock and Dead Man's Chest are some of the Virgin Islands named by pirates who used the islands as a rendezvous in the 18th Century.

SANTA SUGGESTS



PROVEN YEAR AFTER YEAR PIGGY WIGGLY OFFERS YOU THE BEST IN TURKEYS

ORDER YOURS TODAY

- Absolutely the Best Money Can Buy GRADE "A" HAMS Skinless, Shankless Lb. 59c 12 To 18 Lbs. EXTRA LEAN LARGE PORK LINKS ... Lb. 69c GRADE "A" MEATY LARGE CAPONS .. Lb. 59c 4 TO 6 LB. TENDER ROASTING CHICKENS Lb. 49c

95% LEAN AND 100% PURE PORK Pork Pie Meat Lb. 69c BUY "PREMIUM" Or "GLOBE" AND BE SURE

CANNED HAM 5 Lb. \$3.49 Can

FINEST LIGHT Prepared Lulefisk .. Lb. 39c

PIGGY WIGGLY'S Stuffing Meat Lb. 49c

ORDER YOURS FOR XMAS Potato Sausage .. Lb. 39c

- PORK HOCKS FRESH PIG'S FEET VEAL FOR SELTA PORK SHOULDERS FRESH OYSTERS

BRACH'S FINE FRESH QUALITY ASSORTED HOLIDAY CHOCOLATES 5 LB. BOX \$3.39

- Many Flavors for Your HOLIDAY ICE CREAM Bancroft Quality 1/2 Gal. 59c Brach's Holiday Mix Xmas Candy ... 11 Oz. Bag 29c King Midas (Less 5c Coupon) Flour ... 5 Lb. Bag 44c Soft Brown or Confectioners Sugar ... 3 Lb. Cello 49c Pills, Choc. Fudge (25-Oz.) Brownie Mix ... Less 10c Coupon .39c Extra Large Grade "A" Eggs ... 50c Doz. 57c Kraft's New Jet Puff Marshmallows . Lb. 23c

"SWANS DOWN" ASSORTED Cake Mix 4 Reg. Boxes 99c

LOCAL COUNTRY FRESH Rutabagas Lb. 5c

- Fresh Crisp (By Fairmont) Potato Chips Twin Pack 29c "Bunny" Diced Bread Cubes .. Bag 29c Pepperidge Farms Stuffing Bag 29c Heavy Syrup Fruit Cocktail .2 303 Cans 39c All New Crop Mixed Nuts ... Lb. 49c STRAINED CRANBERRY Sauce .. 2 1-Lb. Cans 35c FRESH SERVIT OLEO 3 LBS. 49c



Christmas Values ALL THROUGH THE STORE



(PLAID STAMPS, TOO!) Everything you want for a truly festive Christmas — at extra-thrifty low prices — is ready and waiting for you at A&P! Among the many values that will save you extra holiday cash are those quality-famous A&P Exclusives: delicious Jane Parker Baked Foods, Ann Page Fine Foods, and freshly-ground A&P Coffee. And you'll get to collect valuable Plaid Stamps, too. Shop and save for Christmas at A&P!

JANE PARKER Baked Foods

JANE PARKER REG. 55c Pumpkin Pie 45c

Jane Parker Light Fruit Cake IN ATTRACTIVE BOX! 3-Lb. \$2.85 5-Pkg. \$3.99 over 2/3 fruit & nuts 100 Bonus Stamps On Purchase of a 3 or 5-Lb. Cake

Thrifty ANN PAGE Fine Foods

ANN PAGE SPECIAL OFFER Salad Dressing QT. JAR 45c For the holiday salad bowl, get this big value! Smooth, expertly, seasoned to dress fruits and vegetables deliciously!

ASSORTED FLAVORS Sparkle Gelatin Desserts 4 3-Oz. Pkgs. 29c

Stuffed Olives Sultana Large A Must for Your Holiday Menu! 10 1/2-Oz. Jar 65c ANN PAGE'S Fine Foods Needn't Be Expensive

FOR THE HOLIDAY... ENJOY Coffee Mill Flavor

Holidays are company-days. Better buy the three-pound bag of the coffee that gives you all the festive flavor you pay for... A&P whole-bean Coffee, of course! You see it ground to give you big, fresh, wonderful COFFEE MILL FLAVOR... fresh-ground flavor you can't get in a can!

MILD AND MELLOW Eight O'Clock 1-Lb. BAG 57c 3-Lb. BAG \$1.65

RICH AND FULL-BODIED Red Circle 1-Lb. Bag 61c 3-Lb. Bag \$1.77

VIGOROUS AND WINERY Bokar 1-Lb. Bag 63c 3-Lb. Bag \$1.83

LARGE SELECTION TOYS Only 77c

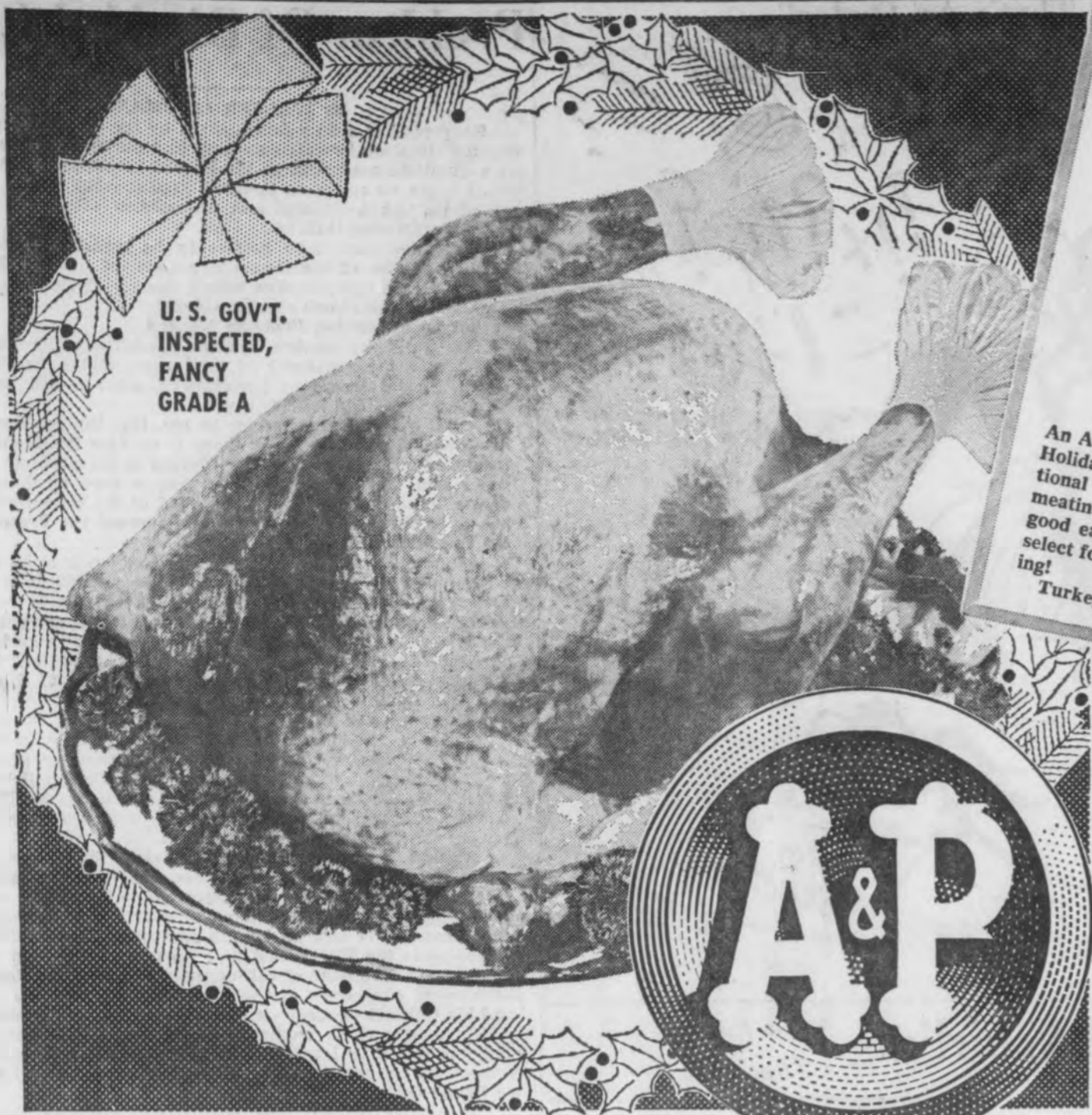
Peppermint Stick Ice Cream Marvel Brand Half Gal. 59c

30c Coupon Nylon Hose Deluxe Sheer WITH COUPON 2 Pr. in Box 99c REG. \$1.29... MELLOWMOOD NYLONS THIS COUPON EXPIRES DEC. 24, 1963

MARQUETTE — NEGAUNEE — ISHPEMING

This Christmas, Give A

Gift Certificate From GETZ'S \$... To... Present this Certificate to us for merchandise of your selection to the value of... Dollars With all good wishes from... No. AUTHORIZED BY... 218-220 S. Front St. GETZ'S Marquette



None Priced Higher in This Weight Range!

Grade A Young Tom

TURKEYS

Northern Grown Tender and Flavorful

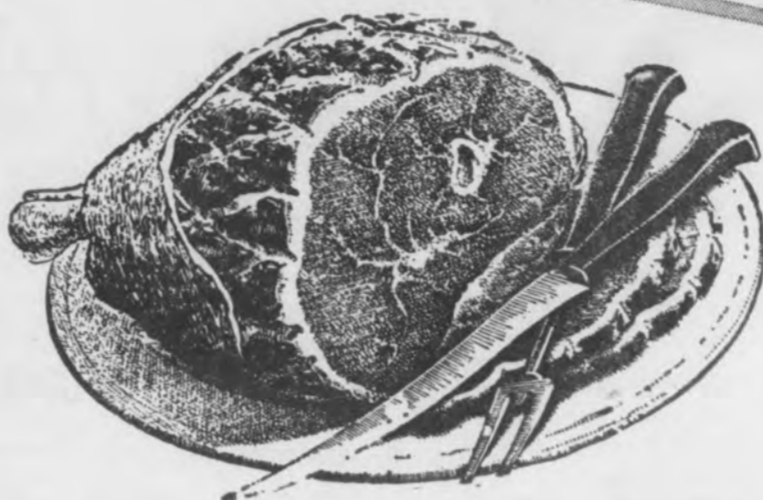
16 to 24-Lb. Favorites
An A&P Christmas Turkey belongs in your Holiday picture! A&P Turkeys are traditional with smart shoppers... for tender meatiness, fine flavor... and the most good eating for your money! They're A&P select for sure quality. A&P priced for saving!

Lb. **33c**

Turkey Hens, 10 to 16 Lb. Avg. ... Lb. 39c

Don't Forget the Stuffing, Specially Baked Jane Parker
Stuffing Bread Cubes
12-Oz. Pkg. **25c**
Cap'n John's
Fresh Oysters
8-Oz. Standard, 79c; 5-Oz. Select, 89c

If Your Family Prefers
Ducks
A&P Offers Its Finest
U.S.D.A. Inspected Fully Dressed! Ready for your Favorite Dressing.
43c Lb.



SUPER-RIGHT

Beef

Rib Roast

King of Beef Roast

65c

5th-6th Ribs

Lb.

1ST THROUGH 4TH

RIBS Lb. 75c

Sweet Pickled Hams Available

Holiday Favorite
Shrimp Frozen—Medium 31-42 Ct. Lb. **69c**

CAP'N JOHN'S

Bread Shrimp 2 Lb. Pkg. **\$1.89**

MEDIUM SIZE

Frozen Shrimp 5 Lb. Box **\$3.45**

SAU SEA

Shrimp Cocktail 3 4 Oz. Jars **\$1**

Famous for Fine Quality and Flavor!
Royal Snack Herring
Tid Bits in Wine Sauce 20-Oz. Jar **99c**
Royal Snack Creamed Herring .. 22-Oz. Jar **99c**
Royal Snack Cut Lunch Herring .. 20-Oz. Jar **69c**

Jell-O Gelatin Dessert 3 3-Oz. Pkgs. **29c**

Kraft's Mayonnaise 1 Qt. Jar **59c**

Heinz Ketchup 2 14-Oz. Btles. **47c**

Del Monte Peas 2 17-Oz. Cans **41c**

Pillsbury Bake 'n Serve Biscuits 8-Oz. Pkg. **9c**

Fresh Butter Sunnyfield Grade AA (Sticks) Lb. Ctn. **68c**

Brown Sugar or Powdered 2 1-Lb. Pkgs. **35c**

Beet Sugar 10 -Lb. Bag **\$1.15**

TOYS De Luxe Reading 10 Big Toys to Choose From Complete Selection

Cream of Wheat 28-Oz. Pkg. **39c**

Mazola Oil 32-Oz., 65c 16-Oz. Btl. **35c**

Star-Kist Tuna 2 6 1/2-Oz. Cans **69c**

Karo Syrup Blue Label 1 1/2-Lb. Jar **29c**

Lux Liquid 12-Oz., 35c 22-Oz., 60c 32-Oz. Can **87c**

Cheer 21 1/2-Oz., 35c 53 1/2-Oz., 79c 91-Oz. Pkg. **\$1.35**

Fully Cooked Ham Super-Right Shank Portion Lb. **35c**

Center Ham Slices Fully Cooked Lb. **89c**

Wafer Sliced Ham For Tasty Sandwiches Half Lb. **59c**

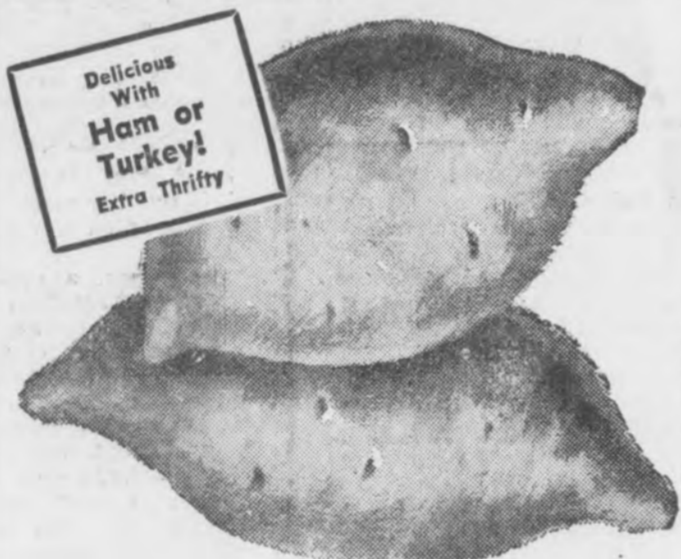
Super-Right Whole Ham 14 to 16 Pounds Lb. **49c**

Ham Butt Portion Fully Cooked Lb. **45c**

Patrick Gudahy Canned Ham Lb. **65c**

Hormel Baked Picnics 4 -Lb. Can **\$2.49**

Whole Ham Fully Cooked Super-Right 18 to 20 Lbs. Lb. **43c**



Delicious With Ham or Turkey! Extra Thrifty

Natural Holiday Favorites!

Golden Yams

A&P has gone "all out" to get the pick of the crop. They're extra big and extra flavorful. Enjoy this welcome change from regular white potatoes. Now's the time to enjoy them!

10c Lb.

Idaho Russet U.S. No. 1 Size A White Potatoes 20 -Lb. Bag **98c**

Navel Oranges California Seedless 138 Size 3 Doz. **\$1.00**

Delicious Apples 7 Lbs. **\$1.00**

Juicy Grapefruit Rich in Vitamin C 8 -Lb. Bag **79c**

Fresh Carrots U.S. NO. 2 2 1-Lb. Bags **29c**

Fresh Broccoli Tender Green Shoots Bch. **29c**

Mushrooms Fresh White Buttons Lb. **59c**

Watermelon Whole, Fully Ripe 10-Lb. Average Ea. **99c**

OLEO NUTLEY 2 1-Lb. Pkgs. **25c**

Ripe Olives Colossal Lindsey 9-Oz. Can **33c**

Swiss Cheese Domestic Large Eye Lb. **59c**

Cream Cheese Victory Brand 8-Oz. Pkg. **29c**

Chocolates Crestwood Assorted Dark or Milk 4 -Lb. Box **\$2.29**

100 EXTRA PLAID STAMPS With This Coupon **Bonus!** 100 Plaid Stamps With \$5.00 Purchase This Coupon Expires Dec. 21st

50 EXTRA PLAID STAMPS With This Coupon and Purchase of 1—Jane Parker **Banana Bar** For **45c** This Coupon Expires Dec. 21st

50 EXTRA PLAID STAMPS With This Coupon and Purchase of 1—8-Oz. Bottle of Sultana **Olive Oil** For **49c** This Coupon Expires Dec. 21st

50 EXTRA PLAID STAMPS With This Coupon and Purchase of 1—3-Oz. Jar Our Own **Instant Tea** For **69c** This Coupon Expires Dec. 21st

50 EXTRA PLAID STAMPS With This Coupon and Purchase of 1—8-Oz. Pkg. Super-Right **Large Bologna** For **35c** This Coupon Expires Dec. 21st

50 EXTRA PLAID STAMPS With This Coupon and Purchase of 1—30 Size Fresh **Pascal Celery** For **29c** This Coupon Expires Dec. 21st



All Prices Effective Through Dec. 21st

ALL PRICES the SAME at —MARQUETTE—ISHPEMING—NEGAUNEE

Supervisors To Study Sign Request

Marquette County supervisors have taken under study a request by Vernon C. White, operator of the Loreta Motel, Gwin, for permission to erect a directional sign (20 feet long, four feet wide) on county-owned property near the approach to K. I. Sawyer Air Force Base.

The request, submitted to the board at its meeting in the courthouse yesterday afternoon, was ordered referred by Board Chairman Carl W. Corneliuson, Ishpeming, to the board's budget and executive committee and prosecuting attorney Edward A. Quinnell of Marquette for a study and report.

Asked for a comment, H. L. Shroeger, Marquette, superintendent-engineer of the county road commission, said the road commission was not able to allow the sign to be erected on the road commission's right-of-way, as this would be against the provisions of the agreement with the federal government in its federal aid to secondary roads program.

"We had no choice," Shroeger said. The request from White asks permission to erect the sign on county-owned property, beyond the right-of-way.

Reject Evening Meets
A request by a supervisor for a change in the times of supervisors meetings to the evening, instead of in the afternoon, was turned down by an overwhelming margin, with only nine of the 44 supervisors indicating they would prefer to meet at night.

The board adjourned to 2 p.m., Wednesday, Jan. 15.

12 Persons Pay \$214 In Fines, Costs
Twelve persons were assessed a total of \$214.40 in fines and costs when they appeared before Justice George J. Fezzy in Marquette Township Court on arrests made by state police officers.

Milton W. Johns, 745 Cedar St., Marquette, was ordered to pay a fine of \$30 for reckless driving. He was arrested Dec. 7 on U.S. 41, in Chocolay Township. Alternative sentence was to spend five days in the Marquette County Jail.

5 'Minors In Possession'
Five young men were each fined \$25 on charges of minor in possession of beer. The five, Roger Donald Zettle, 18, of 321 E. Crescent St.; James M. Merley, 18, of 304 Gries Hill; Dwight C. Castelaz, 20, Norway; James R. Dragieff, 20, Stambaugh; and Ronald L. Williams, 17, of 212 Gries Hall, were arrested in the Tourist Park, in Marquette Township.

For improper overtaking on a marked hill, James N. Tebear, Escanaba, paid a \$15 fine. He was ticketed Nov. 21 on U.S. 41, in Chocolay Township.

Napoleon N. Parks Jr., K. I. Sawyer Air Force Base, paid a \$10 fine for violation of license restriction (not wearing glasses).

He was ticketed Dec. 14 on County Road 553, in Sands Township.

For having an insecure load (Christmas trees not tied down), Harold C. Beckman, 1815 Woodbridge Ave., Marquette, paid court costs of \$4.30. He was ticketed Dec. 7 on U.S. 41, in Skandia Township.

Speeding Counts
The following persons paid the amounts listed for speeding:

Corlyn R. Nelson, Fayetteville, N. C., \$15.80; Bruce R. Zirkel, Box 152, Gwin, \$4.30; and John F. Lofgren Jr., Iron River, \$10.20.

Lawmakers Can't Boost Pay Increase
LANSING (AP) — Legislators can't change the pay scale contained in the State Civil Service Commission recommendation for a \$6.5 million wage increase for state workers, experts agreed to day.

Lawmakers can only reject or reduce the wage hikes recommended by the commission.

Spokesmen for two unions demanding higher pay for low bracket workers had planned to flood the mails and put pressure on their senators and representatives to change the order.

to all classes of employees." **No Provision**
The experts saw no provision in the constitution enabling lawmakers to change the pay scale, as in upping the two per cent increase allowed the lowest-paid workers in state institutions.

Sen. William Ford, D-Taylor, a former delegate to the Constitutional Convention, agreed there was not much the Legislature could do.

"The Democrats at the convention objected to this provision," said Ford.

The name "Tiros" stands for Television Infrared Observation Satellite.

Passenger Mark Set By Airline

North Central Airlines reported today that November is the 16th consecutive month that each month has broken its own passenger boarding record.

Traffic figures revealed that 91,138 passengers boarded during November. The 15,170,118 revenue passenger miles flown also established a high for any November in the company's 15-

year history. Substantial gains in freight and express were recorded during the month. Some 111,104 freight ton miles were flown, up 19 per cent from November 1962. The 68,929 express ton miles carried for the month was an 11 per cent gain over the 62,234 in November of last year.

In 10 States
It was also noted that North Central flew 98.7 per cent, or 1,107,100 of its 1,121,232 scheduled miles during the month, and 82.7 per cent of its flights were on time.

Armed Forces Personnel

Capt. William J. Walin, son of Mr. and Mrs. Karl Walin, Route 2, Marquette, was recently selected Outstanding Navigator Instructor of the month in the 3567th Navigator Training Squadron at James Connally Air Force

Base, Texas. Walin was selected for the honor in recognition of his effective techniques and exemplary devotion to duty. He was commissioned in 1954 upon completion of the Air Force Reserve Officer Training Corps program at Michigan College of Mining and Technology, where he received his bachelor of science degree in electrical engineering.

Recently completing an eight-week radio relay and carrier operation course at the Army Southeastern Signal School, Ft. Gordon, Ga., was Pvt. Darrell D. Stambaugh, 18, son of Mr. and Mrs. Clyde D. Stambaugh, 1424 Garfield St., Marquette. He was trained to operate and maintain field radio relay carriers and associated equipment.

The nine-week training includes naval orientation, history and organization, seamanship, ordnance and gunnery, military drill, physical fitness, first aid and survival. Recently completing an eight-week chemical, biological and radiological (CBR) warfare basic course at the Army Chemical Center, Ft. McClellan, Ala., was Pvt. Paul R. Patron, 23, son of Mr. and Mrs. Theodore A. Patron, 411 Greenwood St., Ishpeming. Patron was trained in the principles of CBR operations and defense, decontamination of CBR agents and the use of smoke.



Shop Red Owl and save S&H Green Stamps for extra cash for Christmas buying.

HOLIDAY SPECIALS

HARVEST QUEEN REGULAR OR DRIP GRIND COFFEE.....	3-LB. TIN	\$1.59
RED OWL BABY KOSHER DILLS, OR TASTY SLICED SWEET PICKLES.....	1/2-GAL.	69¢
FESTAL PUMPKIN... 2	15-OZ. CANS	23¢
RED OWL ELBERTA, FANCY HALVES OR SLICES PEACHES.... 4	17-OZ. CANS	89¢

"IDEAL GIFT PKG., STOCKING FILLER, OR JUST PLAIN EATING"

"HOLIDAY GIFT PACKAGE" NEW CROP NAVAL

ORANGES
OR WASH. STATE RED DELICIOUS

APPLES

CRISP, GREEN PASCAL
CELERY
2 STALKS FOR 29¢

TENDER GREEN
Broccoli BCH. 29¢

YOUR CHOICE, ONLY... **\$1.49** CTN.

"FOR YOUR HOLIDAY NUT BOWL"

FANCY, IN-SHELL
Mixed Nuts 1-LB. PKG. 49¢

FANCY ROASTED
Peanuts 3-LB. PKG. 89¢

MEDIUM IN-SHELL
Walnuts 1-LB. PKG. 49¢

CHRISTMAS STORE HOURS:
Monday thru Friday 9 a.m. to 9 p.m.
Sat. 9 a.m. to 6 p.m.
Tues., Dec. 24th 9 a.m. to 5:30 p.m.



BONELESS—READY TO EAT
CANNED HAMS

RATH 3-LB. TIN \$2.59
CORN KING 5-LB. TIN \$3.39
CENTER CUT HAM ROASTS... LB. 79¢

SMOKED, FULLY-COOKED, WILSON CERTIFIED

Smoked HAMS

(SHANK PORTION) (WHOLE HAMS) (BUTT PORTION)

lb. **39¢** 16-18 POUND AVG. lb. **45¢** lb. **49¢**

GRADE A
TURKEYS

18-24 LB. AVERAGE lb. **33**
8-14 Lb. Average lb. **39¢**

GRADE A—TURKEY—KIDS LOVE 'EM
DRUMSTICKS..... LB. 29¢

GRADE A
GEESE..... 6-14 LB. AVERAGE LB. 59¢

SEA PAK PEELED & DEVEINED FROZEN
SHRIMP..... 1 1/2 LB. \$1.98

HORMEL PURE PORK SAUSAGE 1-LB. PKG. 29¢
HORMEL THICK SLICED BACON 2-LB. PKG. 79¢
FRESH ROASTERS and CAPONS AVAILABLE

RED OWL REFRIGERATED
CINNAMON ROLLS 4 9 1/2-OZ. PKGS. \$1.00

WILDERNESS—PIE FILLING
MINCE MEAT..... 22-OZ. CAN 29¢

FLAV'R FRESH—CHOICE OF PUNCH, GRAPE, OR
ORANGE DRINKS 6 64-OZ. BTLs. \$1.09

MAMMOTH QUEEN
BIZET OLIVES..... 16-OZ. JAR 69¢

RED OWL CHOICE OF 6 FLAVORS
GELATIN DESSERT 4 3-OZ. PKGS. 29¢

QUEEN ANNE
CHOC. COVERED CHERRIES 10-OZ. BOX 45¢

MAKE RED OWL YOUR HEAD-QUARTERS FOR CHRISTMAS CANDY & NUTS

RED OWL CHOC. DROPS 14-OZ. PKG. 33¢
RED OWL OLD TYME MIX CANDY 1-LB. PKG. 33¢
FLAVORKIST SALTINES 1-LB. PKG. 29¢

RED OWL FROZEN (EXCEPT ASPARAGUS)
VEGETABLES

8-OZ. PKGS. \$1.00

FANCY DICED FRUIT
HUNT'S FRUIT COCKTAIL

15-OZ. CANS 4 89¢

INDIAN TRAIL—STRAINED SAUCE
CRANBERRIES

16-OZ. CANS 2 35¢

RED OWL DELUXE (4 FLAVORS)
CAKE MIXES

19-OZ. PKGS. 4 \$1.00

RED OWL FANCY
APPLE SAUCE

15-OZ. JARS 6 \$1.00

ISLAND GOLD CRUSHED
PINEAPPLE

16-OZ. CANS 5 \$1.00

PRICES GOOD THRU TUES., DEC. 24 (CHRISTMAS EVE). WE RESERVE THE RIGHT TO LIMIT QUANTITIES.

★ BAKERY DEPT. ★
RED OWL WHITE SLICED
BREAD

2 1 1/2 Lb. Loaves 49¢

BUTTERCRUST OR HARD
ROLLS..... DOZ. 39¢

BORDEN'S
Egg Nog..... 32-OZ. CAN 59¢

RICH'S WHIP
Topping..... 10-OZ. CAN 39¢

RED OWL FROZEN—FANCY NORTHWESTERN HALVES
Strawberries..... 5 10-OZ. PKGS. \$1.00

KRAFT PHILADELPHIA
Cream Cheese..... 8-OZ. PKG. 29¢

DULANEY SYRUPAK (23-OZ.) OR VACUUM PAK
Sweet POTATOES..... 4 16-OZ. CANS \$1.00

GRADE A LARGE
EGGS..... 2 DOZ. 99¢

SNACK THINS
Nabisco..... 9 1/2-OZ. PKG. 39¢

RED OWL
Who gives a hoot about you? Red Owl... that's who...!



Free Gifts for the Whole FAMILY with... **GOLD BOND** stamps

Say "Merry Christmas" the Gold Bond way with beautiful, free Gold Bond Gifts!

for Happier Holidays **SAVE** at



Armour's Fully Cooked **HAMS** FULL SHANK HALF SHANK HALF **37¢** lb

Whole Ham Lb. 45¢
Center Slices Lb. 79¢

Assorted Flavors **RINGO DRINK** GRAPE — ORANGE — PUNCH — **3** 46 OZ. GANS **69¢**

CUDAHY **CANNED HAM** 10-12 Lb. Avg. Lb. **69¢**

ARMOUR STAR **SLICED BACON** 1 Lb. Pkg. **49¢**

WILSON'S **Pork Sausage Roll** Lb. **29¢**

WILSON'S **CANNED HAM** 5 Lb. Tin **\$3.69**

CAPONIZED SURGICALLY **TENDER CAPONS** Lb. **49¢**



Land O' Lakes Frozen — U.S. Gov't. Inspected

TURKEYS 18-24 LB. AVERAGE **33¢** LB.

50 EXTRA GOLD BOND STAMPS (With Purchase of One or More Any Size Turkey)

FROZEN GRADE "A" **DUCKS** 4-5 Lb. Average Lb. **45¢**

• FRYERS • GEESE • ROASTERS • LUTEFISK • HERRING

ALL SIZE TURKEYS TO SUIT YOUR FAMILY NEEDS . . .

EAGLE RIVER — WHOLE OR STRAINED **CRANBERRY SAUCE** 2 16 Oz. Cans **39¢** DULANEY — VACUUM PACK OR SYRUP **Sweet Potatoes** Squat Can **25¢**

KING MIDAS **PANCAKE MIX** (SAVE 30c) **3** LB. PKG. **39¢**



Pascal **CELERY** Large Stalks **2** **29¢**

FOR CHRISTMAS GIVING **FOOD GIFT CERTIFICATES** Give A Gift — To Be Remembered! Food Gift Certificates Available At Angeli's Of Different Denominations Redeemable For Merchandise.

SUPER VALU **CAKE MIXES** YELLOW—SPICE WHITE—CHOCOLATE **3** 19 OZ. PKGS. **89¢**

SUNKIST NAVAL — SIZE 113 **ORANGES** Doz. **49¢**

GOLDEN—SOUTHERN **Yams** Lb. **10¢** LONG FIRM **Cucumbers** .. 2 For **25¢**

GENUINE IDAHO RUSSET **Potatoes** 10 Lb. Bag **49¢**

FRESH **Cranberries** 1 Lb. Cello **19¢**

Kumquats — Endive — Escarole — Turnips — Parsnips **FRUIT BASKETS MADE TO ORDER!**

Angeli's **SUPER VALU**

Price In This Ad Effective Thru Saturday, Dec. 21st.

SUPER VALU



Flav-O-Rite
ICE CREAM
All Varieties, half gallon **59¢**

HERSHEY CHOCOLATE

SYRUP 16 Oz. Tin **19¢**

SUPER VALU Known for Famous Brands

MAKE A GIFT LIST OF FOOD FOR CHRISTMAS!

- GIFT-WRAPPED FRUITS
- CHEESES OF ALL KINDS
- FANCY OLIVES & CHERRIES
- IMPORTED CANNED FOODS
- MIXED NUTS
- CANNED HAM
- CANDY
- CIGARETTES
- POULTRY
- FRUIT CAKES

Don't Forget Your Favorite Charity at Christmas

Flav-O-Rite Frozen Halves

Strawberries

5 10 oz. pkgs. **\$1**

REGULAR 49¢ VALUE (SAVE 10¢)

Shedds Salad Dressing Qt. **39¢**

SUPER VALU ALUMINUM FOIL 25 Ft. Roll **31¢**

PAGE ASSORTED NAPKINS 200 Count **29¢**

DURKEE GROUND BLACK PEPPER 4 Oz. Can **39¢**

BOND'S MEDIUM DILL PICKLES Qt. **29¢**

FLAV-O-RITE — SAVE 19¢ ASSORTED COOKIES 4 For **\$1**

HUNT'S

FRUIT COCKTAIL 4 16 Oz. Cans **89¢**

MY-T-FINE PIE CRUST MIX 2 9 Oz. Pkgs. **29¢**

WILDERNESS APPLE PIE FILLING 3 Cans **89¢**

THREE DIAMOND

Mandarin Oranges 3 11 Oz. Cans **69¢**

LINDSAY SELECT RIPE OLIVES 16 Oz. Can **29¢**

RED DOT TWIN-PAK POTATO CHIPS Box **59¢**

NABISCO SNACK CRACKERS Pkg. **39¢**

LIBBY'S CAN PUMPKIN 3 16 Oz. Cans **39¢**

WILDERNESS PECAN PIE FILLING 29 Oz. Can **69¢**

WILDERNESS RAISIN PIE FILLING 3 Cans **89¢**

PRIDO SHORTENING 3 Lb. Tin **59¢**

Sea Pak Frozen **Breaded Shrimp**

10 oz. pkg. **49¢**

Save on Frozen Foods

FLAV-O-RITE FROZEN Mince Meat Pie Lge. Family Size **39¢**

Flav-O-Rite Frozen

PUMPKIN PIE

Large Family Size **29¢**

FRESH FROM OUR DAIRY DEPT.

KRAFT'S PHILADELPHIA CREAM CHEESE 3 Oz. **35¢** .. 2 4 Oz. Pkgs. **29¢**

KRAFT'S FLAVORED CHIP DIPS 8 Oz. Pkg. **49¢**

BONNIE MAE BUTTERMILK BISCUITS 3 8 Oz. Pkgs. **25¢**

SPECIAL OFFER

Park Avenue Crystal **Glasses**

12 9 oz. tumblers. **59¢**

TEDDY BEAR PINK or WHITE **TOILET TISSUE**

(SAVE 20¢) 10 ROLL PACK

69¢

COMSTOCK — SAVE 30¢

Mince Meat Pie Filling 25 Oz. Jar **39¢**

BUTTER KERNEL — YOUR CHOICE

PEAS W.K. CORN CREAM CORN **6** 16 Oz. Cans **\$1**

PURE APPLE BASE Sweettooth Jelly 35 Oz. Jar **49¢**

ASSORTED FLAVORS—IMITATION—SAVE 10¢ Sweettooth Preserves 35 Oz. Jar **49¢**

TO TAKE OUT COMPLETE LINE MIXES — POP — BEER — WINE — And PARTY SUPPLIES

50 EXTRA GOLD BOND STAMPS With Coupon & Purchase of Three or More Pkgs. XMAS CANDY ONE COUPON PER FAMILY COUPON EXPIRES SAT., DEC. 31 ANGELI'S — MARQUETTE

50 EXTRA GOLD BOND STAMPS With Coupon & Purchase of \$1.00 Or More HEALTH & BEAUTY AIDS ONE COUPON PER FAMILY COUPON EXPIRES SAT., DEC. 31 ANGELI'S — MARQUETTE

50 EXTRA GOLD BOND STAMPS With Coupon & Purchase of 3 Or More Lbs. Etc. ALLSWEET OLEO ONE COUPON PER FAMILY COUPON EXPIRES SAT., DEC. 31 ANGELI'S — MARQUETTE

25 EXTRA GOLD BOND STAMPS With Coupon & Purchase of One Or More Pkgs. Of NUTS IN SHELL ONE COUPON PER FAMILY COUPON EXPIRES SAT., DEC. 31 ANGELI'S — MARQUETTE

50 EXTRA GOLD BOND STAMPS With Coupon & Purchase of \$5 Or More Except Dry Wine or Cigarettes GROCERIES ONE COUPON PER FAMILY COUPON EXPIRES SAT., DEC. 31 ANGELI'S — MARQUETTE

COUPON

THIS COUPON ENTITLES YOU TO ONE ...

HILLS BROS. — REGULAR OR DRIP GRIND

COFFEE 2 Lb. Tin **99¢**

With Purchase Of \$10.00 Or More

THIS COUPON EFFECTIVE THURSDAY thru SATURDAY, DEC. 21, 1963

ONE COUPON PER FAMILY — ANGELI'S — MARQUETTE

Dear Abby...

By ABIGAIL VAN BUREN
DEAR ABBY: I recently had to get rid of our dog (she was only a puppy) because my husband abused her so terribly...

laws would stop sending us gifts! They are so one-sided in their giving. I don't mean to sound like an ingrate...

DEAR ABBY: I am 15 and I've got a problem. His name is Paul and he doesn't even know I'm alive. Every girl in school has flipped for him...

DEAR WORRIED: You are worried with good reason. Getting rid of the dog did not solve your problem...

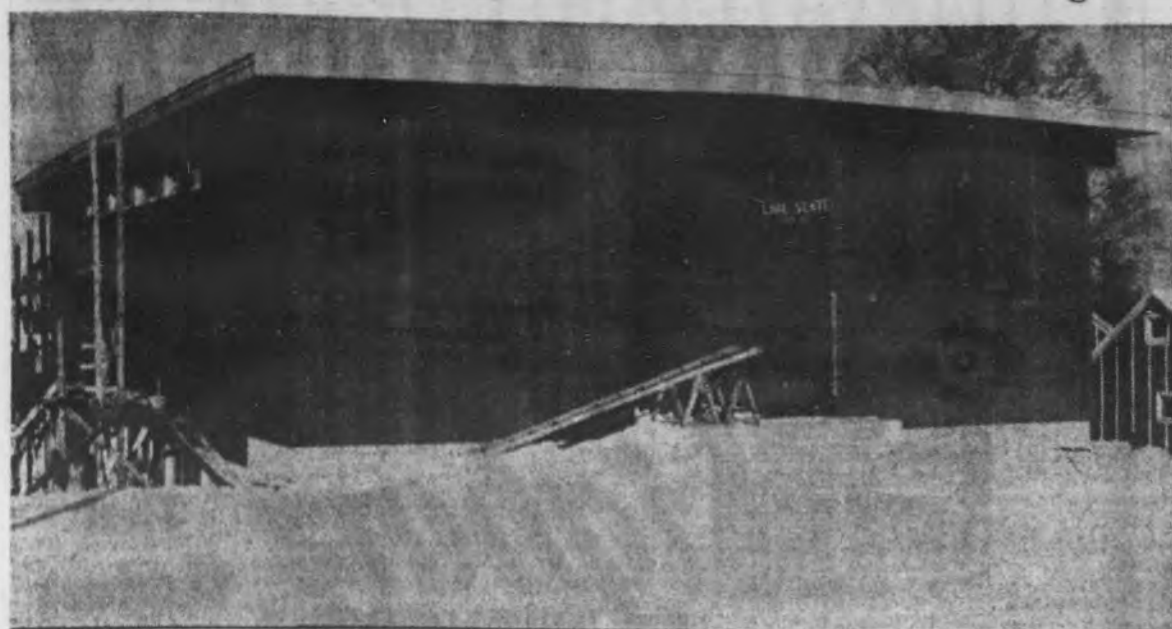
61-Inch Snowfall In Western U. P. So Far This Fall
IRONWOOD — All roads are open and traffic is moving normally despite some 30 inches of snow on the ground...

WELL DRILLING Eugene M. Korpi GR 5-4370
What's on your mind? For a personal reply, send a self-addressed, stamped envelope to Abby, Box 3365, Beverly Hills, Calif.

GIFT CERTIFICATE The Style Shop
Present this Certificate to us for merchandise of your selection to the value of _____ Dollars
With all good wishes from _____
NO PROBLEM WITH SIZE, COLOR OR EXCHANGES WITH A GIFT CERTIFICATE
From THE STYLE SHOP ISHPEMING



Rapid Progress Being Made On Church Building



Rapid progress is being made on the erection of the new Church of Christ building located on W. Fair Ave. at Birch St. Construction on the building (above) began in mid-October and the church will move into its new quarters in February. The congregation has the "Herald of Truth" program on WDMJ, The Mining Journal radio station, every Sunday morning at 9:30. General contractor for the construction is Lake States Construction Co., Marquette.

No Yule Joy Ahead For This Family

WHITWELL, Tenn. (AP)—The Leo Sanders family will pay scant attention this year to Dec. 25. As Christmas day, it will be stark and bleak. At the end of a full year for southeast Tennessee's longest and bloodiest coal strike, it will have no special meaning. Like all days since 1959, it will be jobless, hopeless and illiterate, is one of thousands of former coal miners laid off long before the current walkout began. He and his wife, a tired 33, have seven children. She expects her eighth baby in January. "My husband worked in the

mines when we married in 1948," said Mrs. Sanders, "but he was laid off four years ago. He hasn't hardly worked since. Just what he could pick up, and there hasn't been much of that." He has been getting \$15 per week in benefits from the United Mine Workers Union, "but they're fixing to cut that out."

Like so many families who live in the isolated mountain pockets which make up the southeast Tennessee coal fields, Sanders' future was set when he quit school, like his father before him, to work in the mines. 600 Affected After World War II, 4,000 coal miners toiled in southeast Tennessee. As mountain mines closed in the face of mechanized competition from the central Plains states, the work force dwindled. When the present UMW walkout began Dec. 26, 1962, only 600 union miners were affected. Three men have been slain since 100 miners defied entrenched union sentiment and returned to work without a contract. The strikers seek a wage of \$23.44-26.40 per day, plus 40 cents per ton royalty to the UMW welfare fund. The coal operators have offered \$20.12 per day—paid the 100 working miners—plus 10 cents per ton royalty.

Antitrust Suit The issues in the strike parallel those in a \$30-million antitrust suit filed against the UMW by a group of small coal operators and scheduled for trial in April. The southeast Tennessee operators accuse the union of conspiring with the big, mechanized coal operators of western Kentucky to freeze them from the giant Tennessee Valley Authority coal market. TVA's Widows Creek steam plant, just across the estate line at Bridgeport, Ala., is virtually the sole market for southeast Tennessee coal. But because of labor difficulties—present and past—TVA has turned to western Kentucky for the tremendous fuel quantities needed to operate the plant and generate electricity.

2-Room House The operators say they cannot pay the UMW scale and compete economically with mechanized mines elsewhere for the TVA market. Only one mine in southeast Tennessee is fully mechanized. Leo Sanders goes into the abandoned mines virtually every day to scratch for fuel for the pot-bellied stove which warms the 2-room house—a converted garage—in which his family has existed for the past six years. The average "lifetime" of a Tiro weather satellite is about four months.

County Sales Tax Total Tops In U.P.

Sales tax collections in Marquette County for October, based on November sales, amounted to \$234,699.93, the largest for any county in the Upper Peninsula. Ranking second in U.P. sales tax collections was Chippewa County, where collections amounted to \$151,617.76. 375 In Marquette A breakdown of the collections showed that Marquette County returns were made by 935 businesses, including 375 in the City of Marquette. Returns from the City of Marquette accounted for \$123,140.51 of the county total.

On the county level, \$21,612 came from dealers in building materials, \$19,599 from general merchandise shops; \$86,588 from food stores; \$56,075 from automotive dealers; \$10,288 from apparel shops; \$8,550 from furniture stores; \$13,954 from miscellaneous retail outlets and \$18,030 from non-retail businesses.

October collections from the 15 U. P. counties was as follows: Alger, \$30,837.29; Baraga, \$25,219.58; Chippewa, \$151,617.76; Delta, \$147,692.65; Dickinson, \$112,200.74; Gogebic, \$34,251.48; Houghton, \$142,312.35; Iron, \$61,796.02; Keweenaw, \$8,052.67; Luce, \$29,116.59; Mackinac, \$55,680.75; Marquette, \$234,699.93; Menominee, \$60,988.83; Ontonagon, \$36,103.31; and Schoolcraft, \$40,568.62. The Michigan Department of Revenue reported that sales tax collections in the state in October amounted to \$40,477,312.05. This was an increase in dollar volume of \$2,167,613.97, or 5.66 per cent, over October 1962 collections.

Financial Scene: December Store Sales Record Due

By SAM DAWSON NEW YORK (AP) — If you find the stores jammed this week and downtown sidewalks unusually crowded you can seek the reason in government statistics: ● There are 1.5 million more persons on payrolls this year than last. ● Factory workers' weekly earnings are at a record \$101.09 and average hourly pay is at a record \$2.49, or 8 cents more than a year ago. ● Overtime in manufacturing plants averaged three hours a week at latest count, and in the auto industry it was 6.4 hours. ● Profits of manufacturing firms are climbing to more than 10 per cent above last year. Sure of Record All of this forms the background for the record December sales which the nation's stores seem sure to set. And with the shopper flush, but still bargain conscious, the store aisles are crowded both days and evenings. Merchants have plenty of competition — downtown stores with suburban shopping centers, department stores with discount stores — and most newspapers are filled with promotional advertising. Larger payrolls in factories tell only a part of the story. The big gain in employment this November over last, the Labor Department reports, was in the service industries, up 77 per cent from 1962, and now accounting for 34 per cent of all payroll employment. Nonfarm jobs now number 58,304,000. Manufacturing employment is now 17,241,000 over last year. So, for all of the higher wage scales, longer work weeks and more overtime in factories, the big increase in spending money can be traced to others than the producers of goods. Many saw their incomes increase this fall from other than payroll sources. Dividends pay-

ments are running well ahead of a year ago, thanks largely to a marked increase in corporate profits. Outlays from pension and other funds and from interest on savings also are fattening the shoppers' purses. Government statisticians figure that about 80 percent of the population is sharing to some extent in the increase in incomes this year from one source or another. The other 20 percent is still the nation's stickiest problem. But the more fortunate ones are crowding store aisles and the sidewalks between stores.

FOOD ABUNDANT

PRICES GOOD THROUGH DECEMBER 24TH ORDER YOUR CHRISTMAS POULTRY TODAY GRADE "A" YOUNG TURKEYS TOMS 22-24 Lbs. Lb. 35¢ | HENS 8-12 Lbs. Lb. 39¢ GLOBE FULLY COOKED HAMS 16-18 LBS. 5-6 Lb. Portion Shank Lb. 37¢ | Half Shank Lb. 42¢ | 5-6 Lb. Portion Butt Lb. 47¢ | Half Butt Lb. 55¢

- Capons • Roasting Chickens • GLOBE CANNED HAM 12 Lb. Can Lb. 69¢ 5 Lb. Can Lb. \$3.69 Jones Pork Sausage Links, Meat, Liver Sausage and Hickory Smoked Bacon IGA Sliced Bacon Lb. 49¢ Star Pork Sausage Meat Lb. 29¢ Grade "A" Roasting Chickens, 5-6 Lbs. Lb. 49¢ Vollwerth Ring Bologna 3/10-Oz. Pkgs. 99¢ Crosse & Blackwell Branded Mince Meat Lb. 39¢ IGA Cleaned and Deveined Shrimp 1 1/2 Lbs. \$2.29 Fresh Medium and Large Oysters In The Shell And Finnan Hattie — Jumbo Shrimp Lobster Tails

- FRESH FROZEN Pet Ritz Mince Pies 49¢ IGA SQUASH 2 12 Oz. 29¢ Candied YAMS Pkg. 33¢ Pet Ritz PIE SHELLS Pkg. of 2 39¢ Peppercorn STUFFING MIX Pkg. 29¢ Elm Tree Ready To Bake Bread, Pkg. of 3 49¢ IGA Ice Cream 1/2 Gal. 69¢ Borden's Fancy Ice Cream 1/2 Gal. 89¢ Cloverbloom Butter Lb. 67¢ Philadelphia Cream Cheese 8 Oz. 29¢ Burnette Farm TOMATO JUICE 4-46 Oz. \$1.00 Dulaney Sweet Potatoes 2 3 Lb. Cans 53¢ SHELLLED PECANS Lb. 99¢ California Fruit Cakes 20 Oz. \$2.29 Golden Fruit — Date Nut Fruit Rum Butter Fruit DELIVERIES THIS WEEK Tues., Thurs., Fri.—4:00 p.m. Sat. 10 a.m. & 3 p.m. Place Orders Before Noon For Afternoon Delivery CA 6-2581 MARQUETTE

LaBonte's FOOD STORE YOUR IGA STORE AT 800 N. 3RD ST. CA 6-2581 MARQUETTE

Save 40¢ on Maxwell House

STORE COUPON SAVE 15¢ on your next Maxwell House 3-lb. purchase

1 Clip this coupon. Take it to your grocer. You'll save 15¢ on your first 3-lb. Maxwell House purchase...



2 and get a coupon in the can worth 25¢ on your next 3-lb. purchase. Save 40¢ in all on Maxwell House Coffee!

Plans Told For '64 Art Contest

Once again, all high schools in the Upper Peninsula are being contacted regarding the 1964 art talent contests sponsored by Michigan State Federation of Women's Clubs and Hallmark Cards according to Mrs. C. W. Dupras, district chairman of the fine arts department, MSFWC.

Paintings must be received by the District Federation of Women's Clubs art chairman no later than Jan. 31. There will be six half scholarships for eight week summer art camps at the National Music Camp at Interlochen, Mich.

Two prizes are for the freshman-sophomore high school class and four for the junior-senior high school class.

The medium may be oil, water color, pastel or casein. Size of paintings should be from 22 inches to 28 inches, unframed and with a strong matting or heavy cardboard back. The winning paintings from this district will be sent to the state art chairman, Mrs. Dupras, 357 Harrison St., Marquette, to compete with other district winners for state art scholarships.

The requirements are a portfolio of three original pictures with contestant's own titles. Name, age and class should be clearly marked on the back of the paintings. A jury of experts will judge the art exhibition in Marquette on Feb. 5.

Goals of the annual art talent competition are to "encourage youth to find its place in the rewarding world of art, to give appropriate recognition and assistance to talented young people and to stimulate greater public interest in their creative endeavors."

The entries will be forwarded to the Hallmark Contest.

"To strengthen the Arms of Liberty" may be interpreted by this year's students by the use of historical subjects, landscapes, still lifes or portraits.

In the 1964 contest, the keynote was provided by the late John F. Kennedy, who said, "The elevation of the human spirit, that is the highest effort of art, speaking the common language of humanity, affords us a glimpse of the fulfillment to which free men aspire."

The amounts of the scholarships awarded have been increased to a total of \$2,350 this year. Hallmark Cards will make a first, second and third scholarship award to the national winners toward tuition or fees to any approved art school or college.

The first award will be \$1,000; second, \$750, and third \$600. An alternate will be chosen in case any of the winners cannot accept the scholarship. If any one of the winners do not accept, the other winners will move forward on the list accordingly, and the alternate will be offered the scholarship made available by the move.

Entries taking district, state or national honors will be returned to the artist after an exhibition period set up by the state and national art chairmen of the federation.

The Hallmark contest began in 1953 and has had more than 1,500,000 participants. Hallmark has presented scholarships to 30 young people from 21 states spanning the nation, including Alaska. Last year, entries totaled nearly 500,000.

Mrs. Dupras is serving her third year as district art chairman of the Michigan State Federation of Women's Clubs. She said each year the number of paintings has been steadily increasing.

Mrs. Dupras stated that Mrs. Charles Bur is the local art chairman of the Marquette Woman's Club appointed by Mrs. Russell Balconi, Marquette Woman's Club president.

Trinity Sunday School Offers Christmas Service

The Sunday School of Trinity Lutheran Church will conduct its Christmas service Sunday beginning at 4 p.m. in the church.

In this year's service, entitled "Prince of Peace," the children's message is to be backed up by the visual message of a color film-strip and the worship response of singing Christmas carols.

The congregation will join the children in some of the songs and in the prayers.

The church Christmas tree will be lighted for the first time during the service. The service itself is under the direction of the Sunday school superintendent, Fred Mueller.

Children taking part in the program are, nursery department: Robin Arnold, Renee Coughlin, Janie Kangas, Lyle Nelson, Jill Pflug, Donna Pruess, Gary Tonn, William Turnquist, Robert VanLinden and David Wanfall.

Kindergarten: Cheryl Anderson, LouAnn Beauchamp, Laura Kline, Lisa Peterson, Vicki Peterson, Amy Pflug, Sherolyn Nelson, Becky Quantz and Sally Sakalos.

Primary department: Fred Beauchamp, Marlene Bocklund, Patti Christian, Kristine Coughlin, Lynette Fassbender, Dawn Kangas, Jill Kline, John Koopp, Amy Krueger, Jayne Jokinen, Daryl Longtine, Ann Mohrman, James Mohrman and Dan Turnquist.

Juniors department: Ralph Beauchamp, John Coughlin, Julie DeGiorgis, Gretchen Hausner, David Kline, Judy Manning, Janet Mueller, Diane Pruess, Elizabeth Sleeman, Robin Turnquist and Keith Weiger.

Pre-teen department: Mary Albright, Keith Beauchamp, Pamela Bocklund, Janet Chevalier, Karen DeGiorgis, Kathy DeGiorgis, Debbie Eady, Denise Eady, Steven Fassbender, Carol Hartwig, Steven Kline, Diane Manning, Sue Mohrman and Karen Potvin.

Junior high department: Diane Anderson, Sandra Anderson, Dennis Bocklund, Sandra DeGiorgis, James Hartwig, William Johnson, Larry Krueger, Thomas Mohrman, Jerry Potochnik, Sheila Potvin, David Pruess and Cindy Steinbruck.

The public is invited.

Yule Season Time Of Carefree Commotion

By MRS. INGRID BARTELLI

Consumer Marketing Information Agent, Michigan State University

Nowhere on earth will tables be piled so high with food as they will be in our United States this Christmas. Nowhere in the world will more money be spent on the gifts we exchange. And I would hope that nowhere in the world would we find more confusion, hurrying and scurrying, frustration and pressure and just carefree commotion as exists in most every American community this time of year.

Just what does Christmas mean today? Is it a time of "I would be giving and forget

St. Paul's Church Program Sunday

The Christmas program of St. Paul's Episcopal Church school will be held in the church Sunday afternoon from 3 to 5.

The boys', girls', primary and cherub choirs will sing.

Members of the cherub choir are Erik Smith, Ward and Warren Glass, David Contois, James Boxer, Mark Mudge, Terri Peterhoff, Beverly Walin, Denise Georgevich, Diane Simms, John Sonaglia, Carol Schneider, Douglas Liberty, Holly Hedlund, Janet Swanson, Catherine Sonaglia, Kristine Peterhoff, Charles Aho, Debra Simms and Carl Dahl.

David Brugman, Steven Mulligan, Cindy Rydholm, John Miller, Margaret Hecox, Tommy Anderson, Charles Ecoland, Brian Moore, Cindy Ross, Donald Brugman, Diane Brugman, Roy Rydholm, Susan Schneider, David King, William Raymor, Carrie Welland, James Sonaglia, Jill Anderson, Stanley Wright, Robert Peters, Dawn Brugman, Erika Schimmel, William Miller and Carole Peterson.

At the conclusion of the cherub choir songs, the church school and congregation will participate in a white gift service, each member bringing a gift to place in front of the creche. A tableau of Mary, Joseph and the Shepherds will be given by the Youth Fellowship of St. Paul's.

Following the program, the choirs, church school children and adults will adjourn to the guild hall for a Christmas party. They will be the guests of Group "M."

Presbyterian Church Programs Set Sunday

The First Presbyterian Church will have a special family Christmas service Sunday, at the 11 a.m. worship service.

In the spirit of the season, the story of the Nativity will be enacted in a service of worship and carols. Children are invited to bring their parents.

There will be no Sunday school that morning in view of the preparations being made.

The annual Christmas candle-light concert by the chancel choir will be presented on Sunday at 7:30 p.m. The choir will be directed by Joseph B. Paterson, with Mrs. Alex Finlay at the organ.

The first part of the concert will consist of several of the great and most beloved Christmas anthems in music literature, including "And the Glory of the Lord," from the "Messiah" by Handel, "Gloria" chorus from Mozart's "Twelfth Mass," and Thompson's famous chorus "Alleluia." Mrs. Sterling LaFonde will sing, assisted by the choir, "Cantique de Noel" by Adam. This number is unique in being the only example of a quasi art song accepted by the general public into its relatively small repertoire of Christmas favorites.

The second half of the program will be a repeat, by popular request, of "The Song of Christmas," the story of the Nativity as told in Christmas songs, carols and Biblical verses by Roy Ringwald. Soloists for this portion of the program will be Mrs. Norbert Peano, Allen Bingham and Alden Clark.

The public is invited.

New Names In The News

BURLING — A daughter, Kani Ann, was born on Dec. 16 in St. Mary's Hospital to Mr. and Mrs. George Burling, 432 McMillan St., Marquette.

DUPRAS — A son was born on Dec. 17 in St. Mary's Hospital to Mr. and Mrs. Kenneth Dupras, 120 Blehmhuber Ave., Marquette.

PARIS — A daughter was born on Dec. 18 in St. Mary's Hospital to Mr. and Mrs. Joseph Paris, Route 1, Box 244, Neegaune.

KINDSTRAND — A son, Charles Bruce, was born on Dec. 13 in the Francis A. Bell Memorial Hospital to Mr. and Mrs. Robert Kindstrand, Route 1, Champlain.

GOETTSCH — A daughter, Lori Jean, was born on Dec. 14 in the Francis A. Bell Memorial Hospital to Mr. and Mrs. John Goettsche, 2004 Deer Lake Ave., Ishpeming.

VAUGHN — A daughter, Rona Gen, was born on Dec. 17 in the Francis A. Bell Memorial Hospital to Mr. and Mrs. Dale Vaughn, Box 368, Republic.

SCHNEIDERHAN — A daughter, Jayann Marie, was born on Dec. 17 in the Francis A. Bell Memorial Hospital to Mr. and Mrs. Edward Schneiderhan, 206 N. Second St., Ishpeming.

TOUSIGNANT — A son, David Jon, was born on Dec. 17 in the Francis A. Bell Memorial Hospital to Mr. and Mrs. Albert Tousignant, 206 Stone St., Ishpeming.

Bethel Baptist Presents Yule Program Sunday

The Christmas program of the Bethel Baptist Church Sunday school will be presented Sunday at 7 p.m.

"This Shall Be a Sign," compiled by Eunice J. Fisher, is a full-length Moody monthly Christmas program which presents the heart of the Christmas story in terms of Scripture. The program is being directed by Mrs. Russell Voight.

Professional — "Angels from the Realm of Glory."

The junior department opens the program with recitations, songs and prayer, followed by the primary department singing "God's Christmas Promise," and "The Best Gift."

A playlet portion follows with several classes of the Sunday school represented.

The high school classes comprise a speaking choir, "O Holy Night" will be a featured solo selection.

Nursery and beginner departments will sing "In a Little Manger Bed" and "Little Baby in a Manger." They also will present a fingerplay action poem.

The program will close with several testimonies.

The public is invited.

Meetings

The Victoria Lodge will hold a business meeting Friday at 7 p.m. Christmas program and luncheon are scheduled, with an exchange of 50 cent gifts.

Lines from Lou's by ... Maggie

ONLY 4 SHOPPING DAYS TO CHRISTMAS

Skinless Defatted Whole Hams	Lb. 53c
Shank or Whole Fully Cooked Hams	Lb. 45c
12 to 15 Lb. Pickled Hams	Lb. 53c
5 Lb. Canned Hams	3.55
Premium Leg of Lamb	Lb. 73c
U.S. Good T-Bones	Lb. 79c
U.S. Good Rib Steaks	Lb. 55c
Ground Pork and Beef for Stuffing	Lb. 45c
Norwood Bacon	Lb. 39c
Pork Hocks	Lb. 21c
Fresh Roasters	Lb. 49c
Mixed Nuts	Lb. 49c
Eagle Brand Cranberry Sauce	2 For 39c
Hills Bros. Coffee	2 Lbs. \$1.19
Bananas	2 Lbs. 25c
Pitted Dates	2 Lbs. 29c

LAND O LAKES TURKEYS
Prices Good 'Til Christmas

AL'S MARKET
PRINCE ST. GR 5-4797 NEGAUNEE

Trowbridge Park Sunday School To Give Program

The nursery, beginners and primary classes of the Trowbridge Park Covenant Church Sunday School will present their Christmas program Sunday morning at 11:15.

The nursery and beginners will take part in an action verse entitled "The Wise Men." Songs for this class are "Here We Come to Bethlehem" and "Away in the Manger."

The primary classes will present the following group recitations, "Think of Baby Jesus," "My Dearest Wish" and "Heavens' Peace." Their songs are "Silent Night" and "Oh Come, All Ye Faithful."

Messiah Church Yule Services Set Sunday

"Keeping Christ in Christmas" is the program theme of the Messiah Lutheran Church Sunday school service which will be presented Sunday at 7 p.m.

Participants will be the Rev. J. Otto Magnuson; Mrs. Edward Bernard, Sunday school superintendent; the Luther League choir, directed by Mrs. John Swenson; Mrs. J. Otto Magnuson, organist; junior intermediate departments and the beginners and primary departments.

Children featured in the program are Ronald Johnson, Noel Kropp, Allen Kemp, Jon Magnuson, Edward Rodgers and Howard Ylinen.

Paragraphs

Students of Graveraet High School will stage their Christmas play "Gift of Tenyini" tonight at 8 for the public, and tomorrow afternoon before the student body.

hard, Lynn Vidlund, Danny Wilson, Barbara Contois, Barbara Howard, Christine Youren, Barbara Maynard and Lauriel Vidlund.

The public is invited.



YOUR LIFE . . .

or the life of a loved one could depend on a prescription, promptly and accurately filled by our registered pharmacists, and quickly delivered to your home. You can depend on us . . . all ways!

Open 'Til 9:00 P.M. or We Deliver!

MARQUETTE PHARMACY
JIM & JACK ERSPAMER
221 W. WASH. ST. CA 6-3712

FRIDAY-SATURDAY

Nighbors Final Christmas
WISCONSIN'S LARGEST FURRIERS

FUR SALE

★ GIVE "HER" THE GIFT SHE WANTS MOST!

MINK STOLES and FUR COATS

- Newest styles
- all sizes
- all furs

PRICED FROM \$199 EASY TERMS

SCARFS - JACKETS

- Natural Mink scarfs --- \$125
- Black dyed Persian Lamb Jackets --- 399
- Dyed Squirrel capes --- 125
- Dyed Muskrat jackets --- 199
- Dyed Squirrel scarfs --- 88
- Mouton dyed Lamb jackets --- 125
- Dyed Squirrel stoles --- 199
- Natural Mink boas --- 99

Many Months To Pay!

FRIDAY - SATURDAY ONLY!

Color? Size? Fur? Don't Worry!

The Vogue
106-108 W. RIDGE

Nighbor's factory designers will gladly assist you. Fur products labeled to show country of origin of imported furs . . . prices plus tax.

Say "Christmastime" at your house with foods from...



PRICES GOOD THROUGH TUESDAY, DECEMBER 24th, 1963!

U.S. Gov't Inspected Grade "A"

TURKEYS

35¢

Only At National 4-Legged Tom Turkeys Lb. 35¢

TOMS 18 to 24 LB. SIZES



Dulany Syrup Pack SWEET POTATOES

23-Oz. Can. **29¢**

Young, Tender, Grade "A" **HEN TURKEYS** 10-14 Lbs. **39¢**

- Sliced Peaches Yellow Cling Halves 3 29-Oz. Cans \$1.00
- Fruit Mix Sacramento Delicious 4 16-Oz. Cans 89¢
- Apple Sauce Musselman's Flavorful 4 25-Oz. Jars \$1.00
- Whole Apricots Orchard Fresh Unpeeled 3 29-Oz. Cans \$1.00
- Crabapples Musselman's Spiced 2 29-Oz. Jar 37¢
- Apple Rings Musselman's Spiced 4 15-Oz. Jars \$1.00
- Chunk Pineapple Sea Island Delicious 4 20-Oz. Cans \$1.00
- Tomato Juice Orchard Fresh Refreshing 4 46-Oz. Cans \$1.00

Arm-Cut SWISS STEAK Lb. 59¢

Colorado Corn Fed GROUND CHUCK Lb. 69¢

Blade Cut CHUCK STEAKS Lb. 45¢

Colorado Corn-Fed Beef BNLS. CHUCK ROAST Lb. 69¢

CHUCK ROAST

Blade Cut Lb. **39¢**

Boneless Rolled **Chuck Roast** Lb. **79¢**

Booth's Deveined and PEELLED SHRIMP 1 1/2-Lb. Pkg. \$2.19

Delicious FRESH OYSTERS 8-Oz. Can 69¢

Pickled HERRING National's Cut Lunch 28-Oz. Jar \$1.29

Uncle Tom's PORK SAUSAGE 2-Lb. Roll 79¢

Patrick Cudahy CHRISTMAS SUELZE Lb. 59¢

Top-Taste or Patrick Cudahy SLICED BACON 1-Lb. Pkg. 49¢

Turkey Drumsticks Lb. 35¢

Herring Tidbits National's Flavorful 6-Oz. Jar 45¢

Smoked Ham

Armour, Globe, Oscar Mayer—Fully Cooked SHANK PORTION BUTT PORTION

Lb. **33¢** Lb. **45¢**

Whole Hams 14-18 Lb. Sizes Lb. 49¢

EGG NOG

BANGROFT Qt. **49¢**

So Fresh Grade "A" LARGE EGGS Doz. 55¢
Bulk—Grade "AA" Lb. 69¢
BUTTER

Cream Cheese Philadelphia Delicious 8-Oz. Pkg. 31¢

Ice Cream

TOP-TREAT ALL FLAVORS 1/2-Gal. Ctn. **59¢**

Merry Christmas to you



PUMPKIN PIE

MORTON'S FROZEN 20-Oz. Pie **35¢**

DELICIOUS EASY TO PREPARE

Mince Meat Morton's Frozen Pie 20-Oz. Pie 39¢

Strawberries Sweet and Delicious 3 16-Oz. Pkgs. \$1.00

Elm Tree BREAD

Frozen 3 1-Lb. Loaves **49¢**

Baked Fresh Daily... Top-Taste CRACKED WHEAT BREAD POTATO BREAD

Mix 'Em or Match 'Em 2 1-Lb. Loaves **39¢**

Potato Chips So-Fresh Crisp 1-Lb. Pkg. 49¢

Dill Pickles Pickle-Rite Plain, Kosher or Polish 4 Qt. Jars \$1.00

Ripe Olives Wyandotte Large Whole 2 5 1/2-Oz. Cans 49¢

Stuffed Olives Top-Taste Manzanilla 10-Oz. Jar 59¢

Salad Cherries Imperial Red Maraschino 10-Oz. Bucket 29¢

Sweet Pickles Holsum Whole Holiday Mixed or Whole 22-Oz. Jar 39¢

Queen Olives Holsum Plain 10-Oz. Jar 69¢

Mixed Nuts Terry Brook 13-Oz. Can 59¢



CRISP PASCAL

CELERY

California's Finest, Crisp and Crunchy

19¢

LARGE STALK

- Ripe Bananas Chiquita Golden Sweet 2 Lbs. for 29¢
- Emperor Grapes Thick Meated Lb. 25¢
- Tangerines Florida Large Size Doz. 59¢
- Brazil Nuts or Whole Filberts 1-Lb. Pkg. 49¢
- Mixed Fruit Mor-Fruit Label 1-Lb. Pkg. 59¢
- Sunkist Oranges Sweet & Juicy Large Size 10 For Only 89¢

CRANBERRY SAUCE

Ocean Spray Whole or Strained 2 16-Oz. Cans **43¢**

Candy Cherries Chocolate Covered 13-Oz. CelloPkg. 49¢

Aluminum Foil Easy-Life Household 25-Ft. Roll 29¢

Shortening Crisco Label 3-Lb. Tin 83¢

Frosting Mix Betty Crocker 14-Oz. Pkg. 37¢

Natco Coffee Regular or Drip Grind 1-Lb. Tin 63¢

COUPON
REDEEM FOR... One Blue *Balero* Therm-O Cup WITH A \$5.00 PURCHASE (Excluding Fair Trade & Minimum Mark-up Items) Good at Any National One Per Family Expires Saturday, December 21st, 1963

COUPON
REDEEM FOR... 25 GIFT HOUSE STAMPS With the Purchase of One 18-Ct. Pkg. 45¢ BRILLO SOAP PADS Good at Any National Food Store Expires Saturday, December 21st, 1963

COUPON
REDEEM FOR... 50 GIFT HOUSE STAMPS With the Purchase of Any 10-Lb. Bag of FEATURING RUSSETS POTATOES 10-Lb. Bag 59¢ Good at Any National Food Store Expires Saturday, December 21st, 1963

NATIONAL FOOD STORES
Excluding Fair Trade & Minimum Mark-up Items

2 BIG DRAWINGS
No Purchase Necessary To Win... Register for These Two Free Prizes!
20-LB. TOM • TURKEY
HUGE CHILDREN'S • STOCKING
Filled with Toys

Large Size Tangelos Doz. Only 79¢
A Salad Fruit Avocados Ea. 19¢
Sweet and Crisp Carrots 2 1-Lb. Pkgs. 29¢
U.S. No. 1 Grade Russet Potatoes 10-Lb. Mesh Bag 59¢ 20-Lb. Bag 99¢

- BANKS**
The Peninsula Bank
The Miners' First National Bank
- CATALOG STORES**
Sears Roebuck & Co.
Montgomery Ward
- SHOE STORES**
LaForest Bootery
- APPLIANCES & TV**
Niemi Electric
Stam's Electric Shop
Maytag & Home Appliance Sales
Velin's Radio & TV
- MEN'S & BOY'S STORES**
Stein's Reliable Clothing Store
- RESTAURANTS**
Aunt's Restaurant
Coffee Shop
- SPECIALTY SHOPS**
Photo Shop
Olson News Co.
- TOYS & HARDWARE**
Coast To Coast Stores
Jackson's Hardware
- DISTRIBUTORS**
Upper Peninsula Power Co.
Vogeler Sausage Co.
Copper Country Dairy
- DRUG STORES**
Johnson's Drug Store
Morrison's Miracle Drug Store
City Drug Store
- AUTOMOTIVE**
Vielmetti Chevrolet
Holmgren Buick
O.K. Auto Parts Inc.
Hebbard Rambler Sales
- JEWELRY STORES**
Paul's Jewelry
Saine's Jewelry
- SPORTING GOODS**
Bietila's Sporting Goods
- CARPET & FLOOR COVERING**
Sulo's Floor Covering
- FURNITURE STORES**
Mudge's Furniture Store
Kemp's Furniture
Selin's
- DEPARTMENT STORES**
Dubinsky's
J. C. Penney Co.
J. J. Newberry Co.
F. W. Woolworth Co.
Gately's
- WOMEN'S STORES**
The Style Shop
Goldie's
Evelyn's
- FOOD STORES**
Co-Op Supermarket
Miracle I.G.A. Foodliner

The Christmas City Of The U.P. -
ISHPEMING



INVITES YOU TO SHOP BOTH
DOWNTOWN and MIRACLE CENTER
REGISTER FOR \$400⁰⁰
IN FREE PRIZES
16 PRIZES IN ALL — 4 WINNERS EACH WEEK
NOTHING TO DO, JUST REGISTER — ASK CLERKS FOR DETAILS

ISHPEMING STORES OPEN EVERY NIGHT 'TIL 9 P.M. EXCEPT SATURDAY
INCLUDING MONDAY, DEC. 23rd

STORES OPEN EVERY NIGHT IN BLACK							
DECEMBER							
1	2	3	4	5	6	7	
8	9	10	11	12	13	14	
15	16	17	18	19	20	21	
22	23	24	25	26	27	28	

- ISHPEMING HAS
- FRIENDLIEST CLERKS
 - EXCELLENT GIFT SELECTION
 - EASIER SHOPPING

BOYS-GIRLS VISIT WITH SANTA SAT. DEC. 21st. 2 P.M.

NOTE — SANTA WILL BE IN THE ISHPEMING THEATRE . . . SO YOU GET OUT OF THE COLD — FREE CANDY

PLENTY OF PARKING



CHRISTMAS SALE



NORTHLAND FOOD STORES

SAVE ON YOUR CHRISTMAS FOOD BILL BY SHOPPING AT YOUR LOCALLY OWNED NORTHLAND FOOD STORE. OUR SHELVES ARE LOADED WITH THE FINEST QUALITY FOODS AT PRICES THAT ARE SURE TO SAVE YOU MONEY... SO COME IN AND SEE US FOR FRIENDLY, COURTEOUS SERVICE AND SAVE!!

THESE ARE YOUR LOCAL



NORTHLAND FOOD STORES

• IN MARQUETTE

Paquette's Grocery
TROWBRIDGE PARK

FLETCHER'S SUPER MARKET

TOWN & COUNTRY STORE
HARVEY, U. S. 41

HEATH'S COUNTRY STORE
SKANDIA

• FORSYTH

BROWN'S STORE

• ISHPEMING

PORTALE BROS.

Kallatsa's Market
WEST ISHPEMING

• Eben Junction

UNITY CO-OP

• NEGAUNEE

Collins Cash Market

Tommy's Buy-Rite

RUSSO BROS.

A. & J. SHELL MART
U. S. 41, NEGAUNEE

HIGH QUALITY, LOW PRICES AND EXTRA COURTESY ARE THE TRADE MARKS OF YOUR LOCAL NORTHLAND FOOD STORE.

STOKELY'S FINEST
PINEAPPLE JUICE
46 Oz. Can **35c**



SWIFT'S PREMIUM
FULLY COOKED HAMS

SHANKLESS — SKINLESS — DEFATTED

WHOLE OR BUTT HALF Lb. **55c**

REAL GOLD ORANGE BASE 6 6 Oz. Cans \$1.00

LUDINGTON APPLE SAUCE 3 16 Oz. Cans 49c

KINGS DELIGHT WHOLE APRICOTS 4 29 Oz. Cans \$1.00

EAGLE RIVER GRANBERRY SAUCE 2 15 Oz. Cans 39c

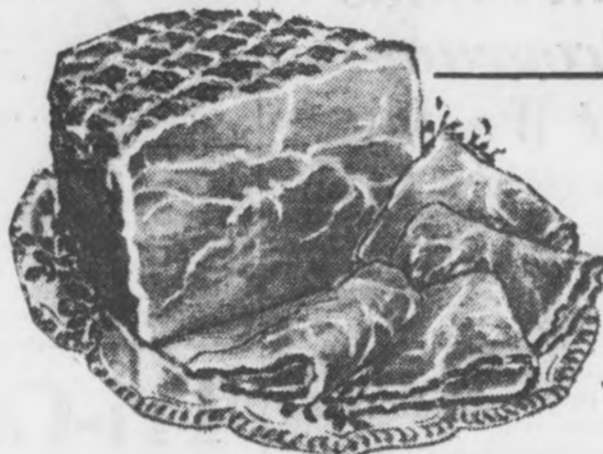
3 DIAMOND SLICED PINEAPPLE 2 20 Oz. Cans 49c

STOKELY'S FINEST HONEY POD PEAS 2 16 Oz. Cans 39c

HOLSUM QUEEN PLAIN OLIVES 7 Oz. Jar 43c

HOLSUM MANZ. STUFFED OLIVES 7 Oz. Jar 43c

BOND'S BABY DILL PICKLES 16 Oz. Jar 23c



SLICED BACON Swift's Premium Deep Smoked Lb. **49c**



SWIFT'S PREMIUM
BONELESS CANNED HAMS

LEAN & FULLY COOKED HEAT, SLICE & SERVE 5 LB. CAN **\$3.49**

PORK SAUSAGE Swift's Premium Skinless Links Lb. **49c**

"SERVE YOUR FAMILY THE VERY BEST"
SWIFT'S PREMIUM **BUTTERBALL** YOUNG TURKEYS
AVAILABLE AT YOUR NORTHLAND STORES

SHEDD'S FAMOUS
SALAD DRESSING
Full Quart **39c**

HEINZ KETCHUP 20 Oz. Btl. **35c**

HERSHEY'S CHOCOLATE CHIPS 12 Oz. Pkg. **39c**

SWANSDOWN ANGEL FOOD CAKE MIX 15 Oz. Pkg. **39c**

GRADE "A" FRESH CREAMERY
BUTTER
Lb. **59c**

BRACH'S HOLIDAY CHOCOLATES 3 Lb. Box **\$1.99-5 Lb. Box \$2.99**

BRACH'S ASSORTED FILLED CANDY 11 Oz. Pkg. **39c**

BRACH'S WITH TOY CHRISTMAS STOCKINGS Ea. **49c**

BRACH'S MARSHMALLOW SANTAS 8 For **29c**

OLD FASHION CHOCOLATE DROPS Lb. **25c**

DELICIOUS FRENCH CREMES Lb. **33c**

CAKEMASTER FRUIT CAKES 2 Lb. Cake **89c**

CAKEMASTER FRUIT CAKES 3 Lb. Cake **\$1.09**

LIGHT OR DARK FAIRY FOOD 10 Oz. Pkg. **49c**

BRACH'S WHIPPED CREMES Lb. **59c**

GIANT POPCORN BALLS Each **5c**

FRESH ROASTED PEANUTS 2 Lbs. **65c**

FANCY MIXED NUTS Lb. **49c**



HOLIDAY
PRODUCE SPECIALS!
Tree Ripened, Sweet, Juicy, Zipper Skin
TANGERINES
29c Dozen
Local Grown U.S. No. 1
POTATOES 10 Lbs. **39c**

ETON FROZEN SLICED
STRAWBERRIES
5 Pkgs. **\$1.00**



SWIFT'S MARGARINE
ALLSWEET
Poly Unsaturated Colored Quarters 4 Lbs. **\$1**

DURKEE'S BLACK PEPPER 4 Oz. Can **39c**

NABISCO PRETZELS OR PRETZEL STICKS 2 8 Oz. Pkgs. **55c**

CREST TOOTH PASTE 6c OFF Family Size **77c**

PRELL CONCENTRATE SHAMPOO 10c OFF Lge. Pkg. **69c**

PRELL SHAMPOO 7c OFF Med. Pkg. **53c**

KRAFT'S LAGER KASE CHEESE 10 Oz. Pkg. **49c**

KRAFT'S COLBY MIDGET LONGHORNS 1-Lb. Pc. **65c**

PHILADELPHIA CREAM CHEESE 8 Oz. Pkg. **29c**

KRAFT'S PORTION BLUE CHEESE 4 Oz. Pkg. **33c**

OUR OWN
DINNER ROLLS
Pkg. **22c**

VAN CAMP'S NEW ORLEAN'S STYLE
Kidney Beans
2 15 Oz. Cans **33c**

CHICKEN OF THE SEA
Chunk Tuna
2 6 1/2 Oz. Cans **65c**

NONESUCH DRY
Mince Meat
9 Oz. Pkg. **29c**

LINCO
Ammonia
Qt. **23c**

ALCOA
Aluminum Foil
18" HEAVY DUTY 25' Roll **59c**

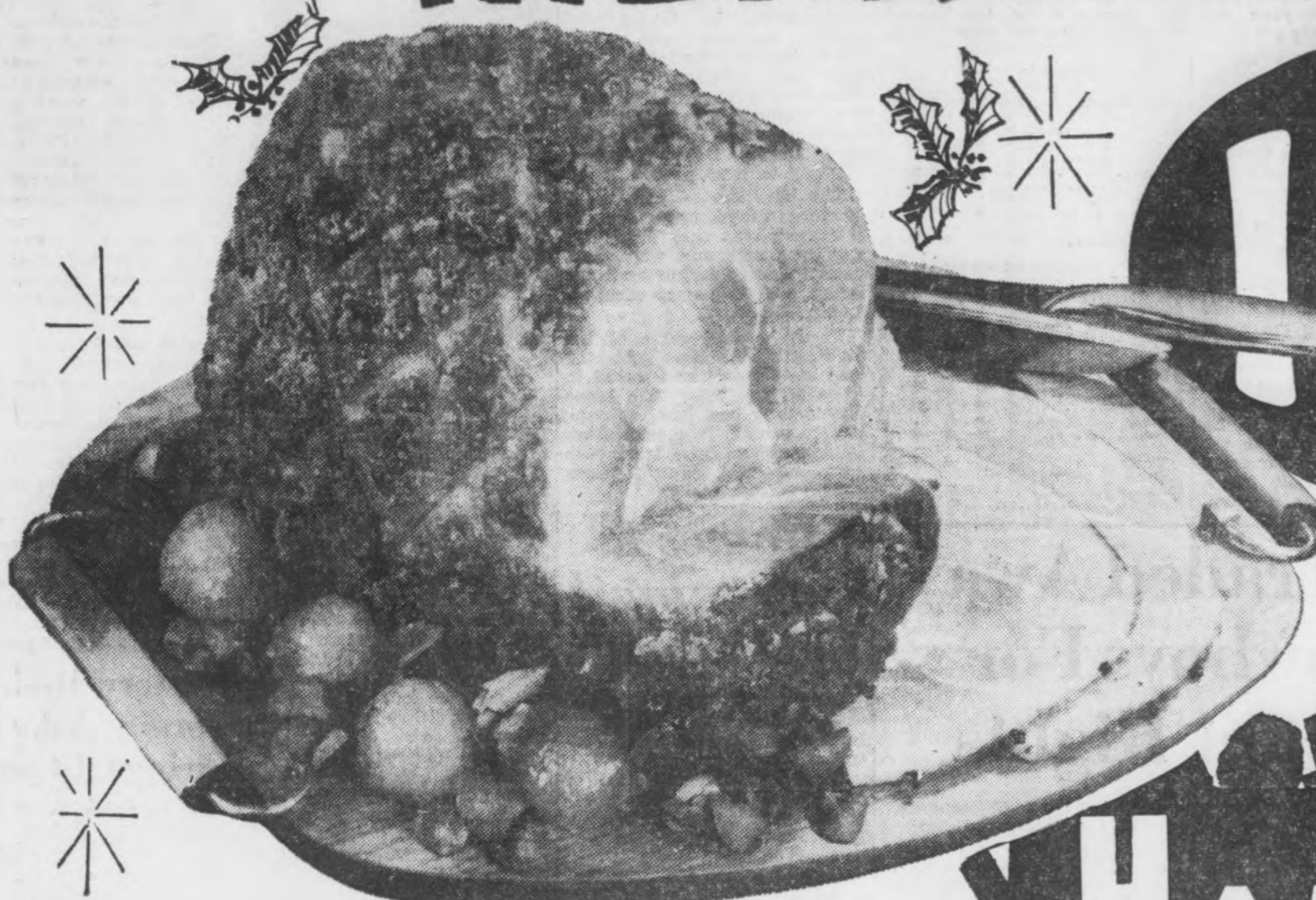
PAGE
Napkins
200 Ct. Pkg. **25c**

CHARMIN
Toilet Tissue
4 Rolls **37c**

PHILADELPHIA
CREAM CHEESE
8 Oz. Pkg. **29c**

MERRY CHRISTMAS!

SAVINGS BY THE BAGFUL!



TableRite USDA Grade "A"
Tom Turkeys 18-24 Lb. Avg. **33c** Lb.
Hen Turkeys 10-14 Lb. Avg. **39c** Lb.

TABLERITE SLICED BACON 1-Lb. Pkg. **49c**
ARMOUR'S STAR PORK SAUSAGE ROLLS Lb. **29c**
FROZEN ROASTING CHICKENS 4-6 Lb. Avg. Lb. **39c**

GLOBE FULLY COOKED
BUTT PORTION HAM Lb. **47c**
ARMOUR'S STAR
CANNED HAM 12 Lb. Avg. Lb. **69c**
GLOBE
CANNED HAM 5 Lb. Tin **\$3.69**
VOLLWERTH'S
RING BOLOGNA 3 Rings **99c**

HAMS
GLOBE Fully Cooked
HAM Lb. **37c**
SHANK HALF

NESCAFE 10 Oz. Jar **99c**
MANDARIN ORANGES 5 11 Oz. Cans **\$1**
BAKER'S
CHOCOLATE CHIPS .. 5 8 Oz. Pkgs. **\$1**

CHRISTMAS SPECIAL
Shirley Gay Seamless **NYLONS**
1-2 pr. box \$1.89 - 1-1 pr. pkg. FREE!
3 PAIR \$1.89



HOLIDAY FLAVOR WITH MEAT!
OCEAN SPRAY Cranberry Sauce
2 16-Oz. Can **43c**

SIZE 113 - CALIFORNIA NAVEL
ORANGES DOZ. **59c**

GREEN PASCAL
CELERY ... 2 STKS. **29c**

LOUISIANA YAM
SWEET POTATOES
Lb. **9c**

IGA BROWN 'N SERVE
ROLLS 2 Pkgs. **49c**
KIDD MARSHMALLOW
CREME Qt. Btl. **35c**
BAKER'S ANGEL
FLAKE COCOANUT 7 Oz. Pkg. **25c**
BUSTER
SPLIT CASHEWS ... Lb. Pkg. **69c**
LIPTON
ONION SOUP Pkg. **37c**
N.B.C.
SNACKS .. 8 1/2 Oz. to 10 1/2 Oz. Pkg. **37c**

SWANSON'S
TV DINNERS 11 Oz. Pkg. **49c**

IGA FROZEN
GRAPE JUICE 6 6 Oz. Tins **\$1.00**

MORE CHRISTMAS VALUES!

IGA VANILLA WAFERS .. 1 Lb. Pkg. **25c**
HUNT'S
FRUIT COCKTAIL .. 2 15 Oz. Cans **49c**
LIBBY PUMPKIN ... 2 16 Oz. Cans **25c**
EMERALD
SHELLED WALNUTS ... Lb. Pkg. **99c**

IGA CIDER Gal. Btl. **79c**
HOLIDAY
MIXED NUTS In Shell Lb. Pkg. **49c**
KITTY CLOVER
POTATO CHIPS 12 Oz. Pkg. **29c**
IGA
SLICED PEARS ... 4 16 Oz. Cans **\$1.00**

BRACH'S CHOCOLATE
BRIDGE MIX
STARS
CHOC. PEANUTS
1 Lb. Bag **59c**

BAKE A QUICK-TRICK
Fruitcake
The quickest, easiest fruitcake ever -
MADE WITH *Betty Crocker*
Date Bar Mix 14-Oz. Pkg. **39c**

SWANSDOWN
CAKE MIX . . 4 Pkgs. **\$1.00**
IGA FROZEN
Vegetables 4-5-6-7 Pkgs. **\$1.00**
HUNT'S
Tomato Juice 4 46 Oz. Can **\$1.00**
PINE-ORA or PINE-CHERI
DRINK . . 2 46 Oz. Tins **49c**

SCOTTIES 400s **25c**
SOFTWEVE 2 Rolls **25c**
WALDORF TISSUE 4 Rolls **35c**
SCOTT TOWELS 2 Rolls **41c**

Miracle Foodliner
LAKEVIEW CENTER, Negaunee

Trewhella's Store
PALMER, MICH.



Negaunee Foodliner
MIRACLE CENTER, Ishpeming

Mussatto's Store
GWINN, MICH.

CONFIDETS 2 12s **89c**
HANKIE PAK Pkg. **10c**
CUT RITE
PLASTIC WRAP Roll **29c**
GERBER'S STRAINED
BABY FOOD 4 1/2 Oz. Btl. **10c**

WITH 5 DAYS BEFORE CHRISTMAS TO BUY ... LORD'S BRING YOU THEIR

AFTER CHRISTMAS CLEAN-UP



OPEN TONIGHT 'TIL 9 P. M.

HURRY FOR BIG VALUES
CHAIRS! TABLES! LAMPS! RUGS!
DINETTES! LIVING ROOM SETS!
BEDROOM SETS AND MORE - ALL AT

1/4 TO 1/2 off
and even MORE!

GIFT APPLIANCES

- Westinghouse Automatic Dishwasher\$159.88
- Large Family Size Westinghouse Upright Freezer\$139.88
- Across Top Freezer—Family Size Westinghouse Refrigerator\$149.88
- Clock, Timer, Automatic, Full Oven Westinghouse 30" Range\$199.88
- Westinghouse Automatic Electric Dryer\$159.88
- Westinghouse Automatic Electric Washer\$199.88
- 2000 Sq. Ft. Area Toastmaster Humidifier\$54.95
- Westinghouse Double Element Electric 52 Gal. Hot Water Heater\$89.88

GIFT SUITES

- Reg. \$249.95—Green 2-Pc. Foam Cushion Kroehler Living Room Set\$199.88
- Reg. \$249.95—Rose-Beige 2-Pc., Foam, Zip Covers Kroehler Living Room Set\$199.88
- Reg. \$299.95—Beige, 2-Pc., Foam Back, Modern Kroehler Living Room Set\$219.88
- Reg. \$299.95—Beige, Wide Arm, 2-Pc. Kroehler Living Room Set\$219.88
- Reg. \$269.95—Gold, 2-Pc. Modern Kroehler Living Room Set\$219.88
- Reg. \$299.95—Turquoise, 2-Pc. Foam Cushion Kroehler Living Room Set\$249.88
- Reg. \$359.95—Toast Pillow-Arm, 2-Pc. Kroehler Living Room Set\$279.88

MISCELLANEOUS GIFTS

- Just Arrived—Reg. \$31.95 Mitchell Garcia "300" Reels\$15.50
- Reg. \$18.95—Mitchell Garcia Fibre Glass Spin Cast Rods\$9.55
- 2 Burner—Gas Coleman Camp Stoves\$10.89
- New in the Cartons Coleman Gas Lanterns\$10.58
- Snowlite Coleman Picnic Jues\$5.88

GIFT MISCELLANEOUS

- Healthful for Colds—Hankseraft Vaporizer\$5.80
- Modern Walnut Desk and Chair\$44.88
- Large Selection Table Lamps\$5.95
- Brass Trim—Assorted Colors Piano or Vanity Stools\$16.95
- Assorted Colors and Styles Early American Footstools\$13.95
- Portable Electric Toastmaster Heaters\$14.95

CHRISTMAS GIFTS

- Sunbeam Steam & Dry Irons\$10.95
- Sunbeam Spray Steam & Dry Irons\$13.88
- General Electric Steam & Dry Irons\$9.69
- Ladies' Sunbeam Electric Shaver\$6.75
- Automatic Toastmaster 2 Slice Toaster\$14.83
- Complete With Attachments Hoover Vacuum Cleaner\$37.88

GIFTS OF ALL KINDS

- Wilson's Steel Center Arnold Palmer Golf BallsDoz. \$7.88
- 1 1/2" Fury Electric Drill\$7.88
- Fury Sabre Saw\$12.49
- Assorted Colors—Men's Insulated Jackets\$7.88
- Finest Quality—Women's Insulated Jackets\$9.27
- With Case, Battery and Earphone All Transistor Radio\$16.95

GIFT BEDROOM

- Reg. \$189.95—Walnut Double Dresser, Chest and Bookcase Bed Timely 4-Pc. Bedroom Suite\$119.88
- Reg. \$199.95—Dresser, Chest, Panel Bed Broyhill Bedroom Suite\$149.88
- Reg. \$289.95—Triple Dresser, Mirror, Chest, Panel Bed Kroehler Bedroom Suite\$179.88
- Reg. \$294.95—Walnut, Dresser, Chest, Bookcase Bed, Large Mirror Broyhill 4-Pc. Bedroom Suite\$199.88
- Reg. \$249.95—Walnut, Large Vertical Mirror, No-Mar Top Broyhill 4-Pc. Bedroom Suite\$219.88
- Reg. \$329.95—White French Provincial Lenorehouse 4-Pc. Bedroom Suite\$219.88

GIFT SPECIALS

- Children's 6 Player Croquet Sets\$2.64
- Life Like—Jointed Arms and Legs 18" My Favorite Doll\$6.59
- Children's 10" Tricycles\$8.88
- American Flyer Electric Train Sets\$10.40
- Battery Operated Electric Train Sets\$3.13
- Palomino Pal Jumping Horses\$5.99

GIFT ITEMS

- One Large Group Assorted Pictures\$7.88
- Men's or Women's by Bulova Caravelle Wristwatches\$10.95
- Assorted Styles Decorator Wall Clocks\$10.13
- Large Size Hampers\$6.49
- Bathroom Scales\$2.90
- Men's Electric Norelco Shavers\$12.88
- Amplex Photo Flashbulbs, Pkg. of 8\$8.95

DINETTE SETS

- White Flake Table—With 4 Matching Chairs 5-Pc. Dinette Set—Reg. \$74.95—\$54.00
- Small Drop-Leaf Table in Gray Finish, With 4 Matching Chairs 5-Pc. Dinette Set—Reg. \$89.95—\$66.00
- Smart Chrome and Gray Table with Chairs in Gray and Walnut 7-Pc. Dinette Set—Reg. \$99.95—\$77.00
- Beautifully Styled Plank-Cherry Table And Mocha Chairs to Match—7-Pc. Dinette Set—Reg. \$129.95—\$88.00
- Modern, Maple Round Drop-Leaf Table—5-Pc. Dinette Set—Reg. \$179.95—\$139.00

SHOP LORD'S BIG DISCOUNT TOYLAND

SAVE ON EVERY ITEM YOU BUY

- Cory Electric Knife Sharpener Now \$6.95
- G.E. Electric Can Opener Now \$8.95

GENERAL ELECTRIC "LEADING LADY" HAIR DRYERS

Lord's Price **\$14.95**

- Asst. Colors 2 Cell Flashlights with Batteries Only 69c
- Shetland Floor Polisher Perfect Gift Only \$22.49

Like Magic — Weather Shield HOT SEATS

IDEAL FOR HUNTERS, SPORT FANS, ICE FISHERMEN, MOTORISTS, ETC.

While They Last **\$149**

- Deluxe Automatic Mixmaster Mixer Now \$34.95
- General Electric Table Model Radio Now \$14.88

White, 3-Tier Sturdy UTILITY TABLE

With Electric Outlet

Lord's Special **\$388**

- Choice of Colors Beacon Electric Blankets \$10.95
- Asst. Colors Sofa Pillows Now 88c

General Electric Room Mate ALARM CLOCKS

Your Choice of Ivory or Pink

While They Last **\$449**

- Mirro Electric Automatic Fry Pans with Cover Only \$9.13
- 5 to 9 Cup Electric Coffee Maker Automatic Too Only \$6.95

GENERAL ELECTRIC VACUUM CLEANERS

Complete With Attachments

Perfect Gift And Priced Low **\$3788**

- Asst. Colors Full Size Dust Pans Deep Well Now 39c
- Men's Insulated Boots Now \$4.95

- Sturdy Lightweight Aluminum Snow Shovels Only \$1.49
- Assorted Colors Fine Quality Toilet Seats Only \$1.99

5' 10" LIFETIME Aluminum Xmas Trees **\$339**

New 12" Rotating Color Wheel **\$459**

7 Light Indoor Tree Lights **88c**

Salad Fork and Spoon Salt & Pepper Shakers 3-PC. SETS Now **39c**

King Size Ass'd. Patterns TV Trays Set of 4 **\$499**

WE'LL DELIVER BEFORE CHRISTMAS

BUY ON LONG EASY TERMS!

UP TO 36 MONTHS TO PAY - FREE DELIVERY

LORD'S OUTFITTING COMPANY

NO MONEY DOWN - 301 SO. FRONT ST.-MARQUETTE - DIAL CA 6-2551