







**Presto! It's Already CARVED!**



**Nifty, Thrifty, Pre-Carved PORK LOIN ROAST**

You'll have this loin roast out of the oven and ready to serve in no time flat! That's because it's already carved and tied together when you buy it! You can cut the tie before roasting... roast the slices as extra good, individual chops... or roast the whole roast, then cut the tie and serve. Either way, precarved pork loin roast is simple and quick... delicious, too!

**39¢ lb.**



RIB END ROAST

RIB CUT CENTER SLICES — LEAN

**Center Pork Chops 59¢ Lb.**

HORMEL'S PURE

**Pork Sausage 1 Lb. Roll 29¢**

ARMOUR'S STAR COOKED

**Canadian Bacon Lb. 89¢**

LOIN END LEAN

**Pork Chops Lb. 49¢**

PATRICK CUDAHY

**Wieners 2 Lb. Pkg. 89¢**

- BLUE BONNET OLEO ... 2 Lbs. 57¢
- VALLEY GOLD FROZEN FRENCH FRIES ... 2 Pkg. 29¢
- VAN CAMP'S REG. 29¢ EACH PORK & BEANS ... 4 29 Oz. Cans \$1
- KRAFT CHEESE SPREAD VELVEETA ... 2 Lb. Box 79¢
- HOFFMAN HOUSE REG. 39¢ VALUE SLAW DRESSING ... 8 Oz. Jar 29¢

PET-RITZ FROZEN

**PIES** } LARGE SIZE **39¢**  
 Banana Cream  
 Lemon Cream  
 Chocolate Cream  
 Coconut Cream  
 Custard Cream

READY TO SERVE—JUST THAW AND EAT



**IT'S SOUP 'n SANDWICH TIME**



**CAMPBELL'S TOMATO SOUP 9 10 1/2 Oz. Cans \$1**

ICE CREAM & CANTALOUPE  
 FLAV-O-RITE—ALL FLAVORS

**ICE CREAM**  
 1/2 GAL. CARTON **49¢**



CONTADINA Tomato Paste ... 2 6 Oz. Cans 29¢

LINDSEY Ripe Olives ... Tall Can 29¢

MI-BEST Salad Oil ... Gal. Tin \$1.59

SHEDD'S — 4c OFF Peanut Butter ... 12 Oz. Jar 35¢

THREE "D" MANDARIN Oranges ... 5 11 Oz. Cans \$1

NESTLE QUIK Chocolate ... 16 Oz. Pkg. 45¢

LIBBY'S FRUIT DRINKS 6 Oz. Can 10¢

CALIFORNIA BEAUTY PLUMS 4 Lb. Bskt. 99¢

VAL VITA CALIFORNIA Sliced Peaches 4 29 Oz. Cans \$1

ASSORTED FLAVORS HAWAIIAN PUNCH ... 3 46 Oz. Cans \$1

SWEET TOOTH PIE FILLING APPLE RAISIN PEACH CHERRY 4 24 Oz. Cans \$1

THIS COUPON ENTITLES YOU TO ONE 12 OZ. PKG.  
 Flav-o-rite FRESH Cottage Cheese 10¢  
 THIS COUPON EXPIRES SATURDAY, JUNE 23, 1963  
 One Coupon Per Family—Angeli's, Marquette

FLAV-O-RITE FRESH Potato Chips Twin Pak Box 49¢

SUPER COLA CANNED POP Assorted Flavors 6 12 Oz. Cans 49¢



SPECIAL

Maxwell House DRIP OR REGULAR

**COFFEE**

**3** Lb. Tin **\$1.59**

SPECIAL

Glown—Jet Popped

**Marshmallows**

Regular 29¢ Value — Save 10¢

**1** Lb. Bag **19¢**

SPECIAL

Imperial 100% Pure

**RASPBERRY PRESERVES**

**2** Lb. Jar **59¢**





Getting in extra practice on "Clarinet Capers," which will be featured at the municipal band concert at 7:30 tonight at Presque Isle Park are Marilyn Erickson (left), 911 W. Fair Ave., and Barbara Specker, 1127 N. Third St. Both are juniors at Graverest High School and apprentice members of the municipal band this summer. In event of rain tonight, the concert will be postponed until Sunday evening. (Mining Journal photo).

### Personnel For Marquette's Band Listed

Members of the Marquette Municipal Band, which plays its first concert of the summer at 7:30 tonight, were listed today by Band Director T. Ray Uhlinger, Northern Michigan University music instructor.

Uhlinger noted that the band's membership will be increased next week by NMU summer school students.

Band personnel, listed by section, are:

**Trumpet:** Howard C. Kitzman, Superior Shores; Robert E. Moore, 440 E. Michigan St.; William Saari, 509 E. Hewitt Ave.; Donald and James Beckman, both of 1028 Second St.; James M. Bogetto, Nezaunee; Howard Ylunen, 1720 Wilkinson Ave., and Geno S. Valente, Nezaunee.

**Baritone:** Frank Wareham, 415 E. Prospect St. and D. Keith Lawson, Ishpeming.

**Bass:** Wilbert Wittala, 317 E. College Ave., and Paul Ingraham, Munising.

**French horns:** Joseph B. Patterson Jr., 722 W. College Ave., and John Anderson, Baraga.

**Flute:** Kathleen Rieboldt, 400 E. Crescent St., and Mary C. White, 115 Palms St.

**Clarinet:** Harold E. Wright, 636 W. College Ave.; Doug Lawson, Ishpeming; John Penhunen, Ishpeming; Ray Pelissier, 281 Biemhuber Ave.; Barbara Specker, 1127 N. Third St. and Marilyn Erickson, 911 W. Fair Ave.

**Saxophone:** James Keranen, 702

### Better Boat Setup Asked For Big Bay

An improvement in the boat launching setup at the Big Bay Harbor was requested at yesterday afternoon's monthly meeting here of the Marquette County Board of Supervisors.

Supervisor Emil Aho of Ishpeming asked that the matter of the possibility of having a gate installed, so as to get boats into Lake Superior in a more convenient manner than is now possible, be referred to the Marquette County Road Commission.

Kevin Sheard, Marquette, president of the Marquette County Bar Association, asked the county board to approve of having a portrait of the late Circuit Judge Carroll C. Rushton of Marquette painted and hung in the county courthouse, along with those of his predecessors.

Board Chairman Carl W. Corneliuson of Ishpeming ordered the matter referred to the board's budget and executive committee for a study and report back to the board.

Ordered received and placed on file was a communication from John A. Vargo, Marquette, field secretary for the Bay Cliff Health Camp, Big Bay, thanking the board of supervisors for its annual allocation of \$1,500 for the camp.

"We greatly appreciate the board's continued interest and financial support of our facilities for handicapped children," Vargo stated.

Bay Cliff, a summer camp for handicapped children in the Upper Peninsula, is now in session.

#### 4-H Agent Introduced

Paul Shogren, Marquette, new county 4-H Club agent, was introduced to the supervisors by Melvin N. Nyquist, Marquette, county extension director for Michigan State University.

Nyquist noted that the supervisors have made strenuous efforts during the past few years to have a 4-H agent assigned to the county, and that the board's action had much to do with the MSU extension service assigning the agent here.

The supervisors adjourned to 2 p. m., Wednesday, July 24.

### Col. Oholendt Bomb Wing's Deputy Chief

Col. Gene F. Oholendt has been named vice commander of the 410th Bombardment Wing (SAC) at K. I. Sawyer Air Force Base. The announcement was made today by Col. F. R. Ramputi, wing commander.

Oholendt replaces Col. Madison M. McBrayer, who left here last week. McBrayer will attend the Industrial College of the Armed Forces at Washington, D. C. The new vice commander graduated from the same school earlier this month.

Prior to his assignment there, Oholendt was chief and deputy chief of the requirements division, directorate of operations, at Strategic Air Command headquarters, Offutt AFB, Neb., for three and a half years.

#### Formerly At Westover

Oholendt went to SAC headquarters from Eighth Air Force headquarters, Westover AFB, Mass., where he was deputy director of material for that numbered air force.

A command pilot, the colonel has been in SAC 10 years. He served in the European theater during World War II, flying 31 combat missions. He logged an additional 12 combat missions in the Korean War.

A native of North Little Rock, Ark., Oholendt is married and has six children. He will assume his duties as vice commander next month.

217 N. Fourth St., and Ronald Patron, Champion.

Wright St. and John G. Major, 1027 N. Third St.

**Trombone:** Eugene A. Cole, 203 W. Kaye Ave., and Edward Mendelin, Calumet.

**Drum:** Gordon A. Lawry, 422 Summit St.; Leonard R. Imislund,

Fresh Sliced As You Buy It!

**RIGGLY WIGGLY**  
The Original SELF SERVICE

**ASSORTED GOLD CUTS SEVEN VARIETIES 59¢**  
Old Fash. Liver Ch., Pickle & P., Olive & A., Mac & Cheese, Bacon Lb. Loaf, Speed Lunch

Small Rib or <b>CLUB STEAK</b> Charcoal Broil Lb. <b>85¢</b>	Tender Steer <b>RUMP ROAST</b> Boneless Lb. <b>89¢</b>	Tender Steer <b>CHUCK STEAK</b> Center Cut Lb. <b>59¢</b>
--	--	---

SWIFT'S FINE TENDERED STEER (CENTER Lb. 79¢)  
**RD. STEAK** Full Slices Lb. **69¢**

ALWAYS FRESH — ALWAYS GOOD — 100% PURE  
**GR'D. BEEF** 2 Lbs. **89¢**

X-Lean Hocks of <b>SMOKED HAM</b> Bolled Dinners Lb. <b>35¢</b>	Large Lean <b>PORK LINKS</b> Home Made Lb. <b>69¢</b>	Braunschweiger <b>LIVER SAUSAGE</b> Lb. <b>35¢</b>
---	---	---

LARGE ASSORTMENT JIFFY  
**CAKE MIX** Reg. Pkg. **10¢**

"CLIFF-CHAR" BRIQUETTES ARE BETTER  
**CHARCOAL** 10 Lb. Bag **49¢**

WIZARD CHARCOAL (FOR FAST STARTS)  
**LIGHTER** Quart Can **49¢**

N.B.C. Cookies <b>"OREO" CREMES</b> 1 Lb. Bag <b>39¢</b>	Colored Quarters <b>FRESH OLEO</b> Lb. <b>15¢</b>	Burnette Farms <b>TOMATO JUICE</b> 46 Oz. Can <b>25¢</b>
---	--	---

LEMON, ORANGE, GRAPE, CHERRY, RASP., DRINKS  
**WYLLERS** 3 Pkgs. **29¢**

SMOOTH, RICH "MUCHMORE"  
**P'BUTTER** 2 Lb. Jar **69¢**

KRAFT'S UNSATURATED VEG. OIL IN  
**MIRACLE WHIP** Qt. **49¢**

"Wright's" Condensed <b>LIQUID SMOKE</b> Pt. Btl. <b>69¢</b>	Lunch Meat <b>SWIFT'S PREM</b> 12 Oz. Can <b>33¢</b>	25 Ft. Roll <b>FOIL WRAP</b> <b>25¢</b>
---	---	--

# How to save 40¢ on Maxwell House Coffee.

Follow these two easy steps:

15¢ STORE COUPON 15¢

SAVE **15¢** on your next Maxwell House 3-lb. purchase

REDEEM NOW

Maxwell House always tastes as good as it smells!

OFFER GOOD FOR 60 DAYS 33434

**1** Clip this coupon and take it to your grocer. You'll save 15¢ on your first 3-lb. Maxwell House purchase...



**2** and get a coupon inside the can worth 25¢ on your next 3-lb. purchase.

That's all there is to it! Clip the coupon above right now. Save 40¢ in all and enjoy Maxwell House—the coffee that tastes as good as it smells.







You Can't Miss With an A&P Steak!

# Round Super-Right Steak

# 65¢

Lb.

- Super-Right—Boneless Round Steak . . . Lb. 75c
- Boneless—Rolled & Tied Rump Roast . . . Lb. 89c
- Super-Right Beef Cube Steaks . . . Lb. 89c
- Super-Right Beef Arm Roast . . . Lb. 49c
- Boneless—Super-Right Chuck Roast . . . Lb. 59c
- Super-Right Beef Chuck Steak . . . Lb. 39c
- Allgood Lean Sliced Bacon 2 Lb. Pkg. 95c

*Fish & Sea Food Favorites!*

- Fresh Dressed Perch Lb. 39c
- Halibut Steaks Flaky White Lb. 49c
- Frozen Shrimp 31 to 42 Medium Lb. 89c
- Ocean Perch Fillets 5-Lb. \$1.69 Lb. 35c
- Summer Sausage Lb. 79c

- Miracle Whip Kraft's Salad Dressing Qt. Jar 49c
- Sultana Corn Whole Kernel 16-Oz. Can 10c
- Cut Wax Beans Iona 3 16-Oz. Cans 35c
- Wax Beans Lake Regent Whole 16-Oz. Can 10c
- A&P Applesauce 3 16-Oz. Cans 49c
- A&P Corn Cream Style 2 16-Oz. Cans 29c

in JUNE WOMAN'S DAY Now on Sale 10c  
SPECIAL COLLECTOR'S COOK BOOK LARGE SIZE EDITION STEAK  
How-to tips on charcoal grilling and marvelous recipes for all kinds of steaks and sauces!  
PLUS: Menus, recipes, ideas by the dozen for America's Favorite Pastime: **OUTDOOR EATING**  
PLUS: 15 Delightful flower arrangements

- Iona Cut Beets 2 16-Oz. Cans 25c
- Fruit Cocktail Sultana 3 29-Oz. S 1
- Canned Shrimp Gulf Stream 4 1/4-Oz. Can 39c
- Sultana Shrimp Canned Medium 5-Oz. Can 45c
- Iona Peaches Halves or Slices 2 29-Oz. Cans 55c
- Sultana Tomatoes 2 16-Oz. Cans 35c

Super-Right Quality—Beef

## Chuck

Popular Blade Cut Beef Roast

# 35¢

Lb.

## Beef Stew or Ground Chuck

# 59¢

Lb.

Super-Right Brand

## Lunch Meat

Special Sale!

Large Bologna, Cotto Salsami, Spiced Luncheon Meat, Old Fashioned Loaf, Minced Loaf, Pickle & Pimento or Olive Loaf.

# 29¢

Half Lb.

For Flavorful Outdoor Grilling!

## Rotisserie

Tasty Beef Roast

# 79¢

Lb.

LARGE, LIGHT, AND ABSOLUTELY LUSCIOUS!

JANE PARKER LARGE

## ANGEL FOOD CAKE

1-Lb., 1-OZ. SIZE REG. 49¢

# 39¢

ONLY

BISMARCKS PKG. OF 6 REG. 39¢ 35¢

LEMON PIE REG. 49¢ 45¢

U.S. No. 1, Size A

## Red Potatoes

# 10 Lbs. 49c

Large Sweet, 9 Size

## Honeydews

# Ea. 49c

Golden Centers

## Cantaloupe

# 3 36 Size for \$1.00

50 STAMPS

Jane Parker Pilgrim Layer Cake Ea. 69c

50 STAMPS

Ann Page Peanut Butter 24-Oz. Jar 69c

50 STAMPS

Gillette Super Blue Razor Blades 15 in 1.00

50 STAMPS

Jane Parker Jelly Buns Pkg. 45c

50 STAMPS

A&P Mozzarella Cheese Lb. 89c

50 STAMPS

Super-Right Pork Sausage Lb. 69c

50 STAMPS

Sultana Olive Oil 8-Oz. Btl. 55c

50 STAMPS

Eight O'Clock Coffee 3-Lb. Bag \$1.59

50 STAMPS

WATER-MELON 99c

ANN PAGE PROVES Fine Foods Needn't Be Expensive!

## BARBECUE SAUCE

18-Oz. BOTTLE

# 33c

✓ Check the FLAVOR! ✓ Check the PRICE!

## A&P Good TEA

Famous Since 1859!

100 Tea Bags

# 98c

Soup & Sandwich Suggestions

Campbell's Soup <b>Mushroom</b> or Chicken Noodle 3 10 1/2-Oz. Cans <b>55c</b>	Campbell's Soup <b>Tomato</b> 3 10 1/2-Oz. Cans <b>35c</b>	Campbell's Soup <b>Vegetable</b> 3 10 1/2-Oz. Cans <b>44c</b>
---	--	---

Buttermilk Bread 2 24-Oz. Loaves 49c  
Strawberry Hotjam Preserves 2 Lb. 59c  
Peanut Butter Hotjam 2 Lb. 69c

Daisy Saltine Crackers Lb. 23c  
Mel-O-Bit Cheese Slices 12-Oz. Pkg. 39c  
Luncheon Meat Super-Right 3 15-Oz. Cans \$1

Sandwich Spread Ann Page 8-Oz. Jar 25c  
Sultana Tuna Flakes 5 6-Oz. Cans \$1  
A&P Tuna Chunks... 6 1/2-Oz. Cans 29c

- Salad Dressing Ann Page Qt. Jar 45c
- Reynolds Wrap Heavy Duty 25-Ft. Roll 57c
- Paper Towels Angel Soft 3 2 Pkg. 8 Rolls 1.00
- White Cloud Toilet Tissue 4 Pkgs. of 8 2 Rolls 1.00
- Puffs Tissue Facial 3 Boxes of 400 79c
- Cheddar Cheese Sharp Aged Lb. 59c
- Ice Cream Marvel Cherry Marble Half Gal. 59c
- Lemonade Libby Frozen 4 6-Oz. Cans 49c
- Pizza Lambrecht Frozen 14-Oz. Pkg. 79c
- Hi-C Drinks Orange, Grape, Fruit Punch Orange-Pineapple 3 46-Oz. Cans \$1
- B&M Beans Small Pea Beans 18-Oz. Jar 29c
- Crisco Vegetable Shortening 3 Lb. Can 81c
- Scott Napkins 2 Pkgs. of 60 29c
- Marvel Cigarettes 10 Ctn. of \$ 2.36
- Confidets 2 Boxes of 12 79c
- Friskies Cat Food 2 15 1/2-Oz. Cans 29c
- Friskies Dog Food Horsemeat 2 15-Oz. Cans 45c
- Friskies Canned Dog Food 2 16-Oz. Cans 29c

THE GREAT ATLANTIC & PACIFIC TEA COMPANY, INC.

# A&P Super Markets

AMERICA'S DEPENDABLE FOOD MERCHANT SINCE 1859

BUY U.S. SAVINGS BONDS

ALL PRICES the SAME at — MARQUETTE — ISHPERING — NEGAUNEE

# Chamber Learns Importance Of U.P. Power Co. In Tour Of Plant, Facilities In City

For some Marquette businessmen the mystery of electricity, especially as it applies to its production, has been somewhat lessened. Members of the board of directors and the industrial development committee of the Marquette Chamber of Commerce were taken on a conducted tour of Upper Peninsula Power Co. and the Cleveland-Cliffs Iron Co. "Aids Employment Climate" Heading up the local group was Robert M. Ling, vice president of the chamber.

Attending with the directors were Franz Menze, chairman of the industrial development committee; Art Weber, committee member; Allan F. Olson, attending for Cliffs; and Robert H. Morrison, representing the Lake Superior & Ishpeming Railroad Co.

Ling said: "We appreciate this up to date, factual report, and the good neighbors U.P. Power has brought to Marquette. It is a real pleasure to see such a gigantic expansion program moving steadily ahead. This is certainly good news for the employment climate of this entire area."

Officials of the Power Company on hand to welcome the group and assist in handling the plant's operations included: John H. Warden, president; Russell F. Hoyer, administrative vice president; William L. Veezer, vice president; Jack Ziegler, superintendent of production, and Charles York, station superintendent.

**Strengthens Economy**

In his preliminary comments, Warden stated that the establishment of the generating company in Marquette was "a very unique accomplishment, proving how private investor-owned business, by working together, can solve their common problems and at the same time strengthen the local economy."

Because of this joint effort

on the part of the Upper Peninsula Power Co. and the Cleveland-Cliffs Iron Co., the Presque Isle Station became a reality and began operating in 1955 with a single unit of 23,000 kilowatts.

During the past two years, considerable construction work has been under way at the plant to enlarge the main structure to accommodate two additional units.

Unit No. 2 of 37,500 KW capacity was placed in operation in 1962 and Unit No. 3 of 58,400 KW capacity, which arrived several days ago, is scheduled to be in service sometime in November of this year.

With these additions this plant will be the largest single source of electric power generation in the

Upper Peninsula.

Factors contributing to this steady expansion is the increasing use of electricity by customers of the power company and the anticipated large amounts of electric energy required for the low-grade iron ore development programs being carried on at the present time in Marquette County, Warden stated.

Following a brief review of the company's history, the group was taken through each phase of the plant's operations at which time they were permitted to observe the intricate step-by-step procedures involved in converting coal to electric energy.

At the conclusion of the tour the chamber members were assembled for dinner and a final question and answer period.

# Taxes Push Up Again In Many States

CHICAGO (AP)—Taxes are being pushed up again in many states.

Higher or new taxes formed a widespread trend in the legislative season now approaching an end.

But it wasn't all one-way traffic.

A Circuit Court judge banned collection of Indiana's new 2-per cent retail sales tax, ruling it unconstitutional. And his action, just days before the July 1 effective

date of the tax, turned the state's fiscal order into chaos.

**Boost Sales Tax**

Nevada's lawmakers boosted the sales tax rate from 2 to 3 per cent. But the voters vetoed the increase in a referendum.

Wisconsin legislation to replace the selective sales tax with a general sales tax was vetoed by the governor.

The Illinois Legislature has failed to approve Chicago Mayor Richard J. Daley's program of special taxes on sales, cigarettes and alcoholic beverages.

**Whopping Budgets**

Commerce Clearing House, a private agency that serves business with such information, reported Wednesday that "state legislatures are boosting rates and adding new taxes at a fast clip

to meet rapidly rising revenue needs."

"State tax growth is reflected in the whopping budgets submitted in key states for the coming fiscal year," it said. "California plans to raise and spend \$3.25 billion. New York \$2.8 billion and Michigan \$1.4 billion.

"Taken together, these three budgets total \$7.5 billion. In 1948, all 48 states collected only \$7.7 billion."

of chemistry at Michigan Tech has been awarded a \$3,410 research grant by the Petroleum Research Fund.

The grant will provide support for a summer project involving molecular complexes of the alkali metals and alkaline earth metals. Two undergraduate and three graduate students are working with Compere on the project.

The Petroleum Research Fund is a charitable, scientific and educational trust established in 1944 by an agreement between several oil companies. The American Chemical Society receives the net income from the trust and administers the fund.

Compere's grant is a "type B" grant, specifically designated for fundamental research in the petroleum field at the undergraduate level.

# Grant Given To Tech Professor For Research Job

HOUGHTON — Dr. Edward L. Compere Jr., associate professor

# ZIP Code, In Effect July 1, To Speed Mail Delivery Here

Postmaster John S. Courtney today announced that the "ZIP Code," a system adopted by the U. S. Postal Department to speed mail deliveries, will be the five-digit 49855, for Marquette.

"Everyone in Marquette will use this ZIP Code on all his correspondence to speed mail deliveries and reduce the chance of mis-sent mail," Postmaster Courtney said.

ZIP Code, the Post Office Department's revolutionary new system of improved mail dispatch and delivery, goes into effect nationally on July 1.

Courtney stressed the importance of all citizens of Marquette learning this ZIP Code and using it in their return address on all correspondence. In answering mail, he said, ZIP Codes taken from return addresses on incoming mail should be used.

"The ZIP Code is literally the last work in mail addressing," Courtney said. "It should follow the city and state in addresses."

He cited this example: John S. Courtney, Postmaster U. S. Post Office, Marquette, Michigan, 49855

The new ZIP Code plan, Courtney said, for the first time will permit the Post Office Department to shortcut repeated address reading.

"The address on mail must often be read as many as eight or ten times by postal employees, to get it to the proper destination," Courtney said. "Each handling slows the process of mail dispatch and adds to the opportunity for human error."

**Cuts 24 Hours**

"With ZIP Code, a clerk needs only to glance at the code to know immediately to what national area, state and post office the letter is destined, and to speed it on its way, cutting up to 24 hours off the time between deposit and delivery."

Courtney said that when ZIP Code is in full swing, the United States will have the "most modern system of mail distribution and delivery in existence."

# Science Eyes Drug To Fight Lung Cancer

By FRANK CAREY

ATLANTIC CITY, N.J. (AP)—Scientists are exploring the possibility of using Atabrine—the armed forces' prime drug weapon against malaria early in World War II—as a kind of "Trojan Horse" to fight lung cancer.

The idea would be to use Atabrine, which itself has no effect on cancer, as a vehicle for transporting radiation—or cancer-fighting drugs to the site of the malignancy—without harming normal tissue enroute.

It would be much like the way the ancient Greeks used their wooden "gift" horse to sneak their warriors inside the walls of Troy.

Drs. Alvin Shemesh and Norman B. Ackerman of the University of Minnesota Medical School told about it in a statement prepared for the closing session of the American Medical Association's 12th annual meeting today.

The Minnesota researchers said they had found that Atabrine, and other compounds of the "aminocridine" family, have a tendency to concentrate most heavily in the lungs and liver when administered to experimental animals.

Declaring that Atabrine and some of its chemical cousins can be made to fluoresce, or "glow," when exposed to ultra-violet light, they said they used this technique to trace the distribution of such chemicals in the tissues of animals in which experimental tumors had been implanted at various sites.

**Light Up**

Some of the compounds, including Atabrine, were strongly concentrated by tumors in the lungs. Within minutes after administration, the tumors and the normal lung tissue would "light up," but by 24 hours the glowing would be limited to the cancer area which would remain bright for about four days.

The doctors said lung tumors in animals can be identified and pinpointed in the lung area by this method when the chest is opened surgically—and they thereby implied that the method might offer a way to aiding diagnosis of lung cancer in suspicious human cases.

# Trial Balance Report Given By Treasurer

All credit balances were listed in the monthly statement and trial balance on Marquette County ledger accounts, in a report given by County Treasurer Bertil Agnoli, Negaunee.

Credit balances were reported at the start of this month as follows: General fund, \$247,099.81; county road fund, \$171,995.62; Morgan Heights Sanatorium and Medical Section, \$117,573.50; soldiers relief fund, \$8,011.14; county parks fund, \$11,791.84; county airport fund, \$45,797.54; social welfare fund, \$150,602.47; direct relief fund, \$101,315.29; and county road investment fund, \$247,849.

**Morgan Heights Report**

Dr. James R. Acoccks, superintendent of the Morgan Heights Sanatorium and Medical Section, said there were 120 patients treated at the institution during the month, 53 in the medical unit and 67 in the medical section.

At the start of the month there were 100 patients hospitalized, 52 in the TB section with 100 there at the close of the period, 57 in the TB section. During the month 20 patients were admitted, 18 discharged and three died.

Expenditures for the period totaled \$34,401.77, while income amounted to \$36,451.16. Of this, \$21,518.65 in expenses were for the TB section and \$12,883.12 for the medical unit. Income was broken down at \$22,848.26 for the tubercular section and \$13,602.90 for the medical unit.

**Mine Inspector Data**

Mine Inspector Henry L. Scarffe, Ishpeming, said he inspected the following Marquette Range mining properties during the month: Michigamme, East Chicago, New York, Boston, Old Volunteer, Lake Angeline, Richmond, No. 3 Winthrop, Dexter, Michigan Gold, Star West, Mary Charlotte Shaft, Cambria Shaft, Greenwood, Chase and Barnes-Hecker.

WNMR — FM  
90.1 MEGACYCLES  
NORTHERN MICHIGAN UNIVERSITY

7:00-9:00 P. M.  
Flamenco Guitar Selections played by Pepe Romero.

9:15-11:00  
Haydn: Symphony No. 45 ("Farewell").

The London Symphony, Antal Dorati.

Mozart: Symphony No. 40 in G minor.

The London Symphony, Antal Dorati.

Brahms: Concerto No. 2. Chicago Symphony Orchestra. Erich Leinsdorf.

Sviatoslaw Richter, pianist.

English Lute music played by Julian Bream.

9:00-9:15 NEWSCAST

**THE BEST... Picnics START HERE**

SUMMERTIME IS COOKOUT TIME, AND WE'RE READY WITH ALL YOUR FAMILY'S FAVORITE BARBECUE TREATS . . . SO COME AND GET 'EM . . . FROM OUR BIG, TEMPTING ARRAY OF EASY-TO-PREPARE FOODS FOR THE GREAT OUTDOORS . . .

ARGO <b>CORN STARCH</b> 2 1 Lb. Pkgs. <b>33c</b>	OLD GRIMES <b>PORK &amp; BEANS</b> . . . . . 15 Oz. Can <b>10c</b>
FLORENT <b>DEODORANT</b> Spray Can <b>75c</b>	HI-C GRAPE OR <b>ORANGE DRINK</b> . . . . . 3 46 Oz. Cans <b>\$1</b>
ACTION <b>BLEACH</b> 22 Oz. <b>75c</b>	SPECIAL TREAT <b>WELCHADE</b> . . . . . Qt. <b>33c</b>
AD <b>DETERGENT</b> 10 Lb. Pkg. <b>\$1.85</b>	COUNTRY GARDEN <b>CORN WHOLE-CREAM</b> . . . . . 7 16 Oz. Cans <b>\$1</b>
VEL Gt. <b>79c</b>	COUNTRY GARDEN <b>BONUS BEAN BUY</b> . . . 3 16 Oz. Cans <b>55c</b>
SOAKIES <b>69c</b>	BOND'S <b>SWEET MIXED PICKLES</b> . . . . . Qt. <b>45c</b>
AJAX LIQUID CLEANER Gt. <b>65c</b>	VELVEETA <b>Cheese Spread</b> 2 Lbs. <b>79c</b>
LIQUID VEL 22 Oz. <b>60c</b>	KRAFT'S <b>JET MARSHMALLOWS</b> 2 10 Oz. Pkgs. <b>35c</b>
CASHMERE BOUQUET 2 Reg. Bars <b>23c</b>	MA BROWN <b>STRAWBERRY PRESERVES</b> 12 Oz. Jar <b>33c</b>
CASHMERE BOUQUET 2 Bath Bars <b>33c</b>	FOLGER'S <b>COFFEE DRIP OR REG.</b> . . . . . 2 Lb. Can <b>\$1.15</b>
PALMOLIVE SOAP 2 Reg. Bars <b>23c</b>	NORTHLAND <b>INSTANT COFFEE</b> . . . . . 6 Oz. Jar <b>69c</b>
PALMOLIVE SOAP 2 Bath Bars <b>33c</b>	SUNNY VALE <b>Fruit Cocktail or Peaches</b> 3 29 Oz. Cans <b>99c</b>
PERFECT PLUS NYLONS Pair <b>99c</b>	BRACH'S ASSORTED <b>MINT LOZENGES</b> . . . . . 11 1/2 Oz. Pkg. <b>29c</b>
ARGO <b>Gloss Starch</b> 2 1 Lb. Pkgs. <b>33c</b>	BRACH'S ICED <b>JELLY GONES</b> . . . . . 10 1/2 Oz. Pkg. <b>29c</b>
LINIT <b>Dry Starch</b> 2 12 Oz. Pkgs. <b>33c</b>	CHEF BOY-AR-DEE <b>RAVIOLI</b> . . . . . 15 1/2 Oz. Can <b>29c</b>
NIAGARA <b>Spray Starch</b> 15 Oz. Can <b>69c</b>	CHEF BOY-AR-DEE <b>SPAGHETTI &amp; MEAT BALLS</b> . . . 15 1/2 Oz. Can <b>29c</b>
NIAGARA <b>Starch</b> 12 Oz. Pkg. <b>23c</b>	CHEF BOY-AR-DEE <b>CHEESE PIZZA</b> . . . . . 15 1/2 Oz. Can <b>49c</b>
	CHICKEN OF THE SEA <b>CHUNK TUNA</b> . . . . . 6 1/2 Oz. Can <b>33c</b>
	WATERMAID <b>RICE</b> . . . . . 2 Lb. Pkg. <b>35c</b>
	GOLD MEDAL <b>FLOUR</b> . . . . . 10 Lb. Bag <b>\$1.09</b>
	STOKELY'S FROZEN <b>ORANGE JUICE</b> 3 6 Oz. Cans <b>89c</b>

**Come and Get 'em**

SWIFT PREMIUM TURKEY  
**Drumsticks** Lb. **39c**

SWIFT PREMIUM  
**Picnics** Lb. **33c**

SKINLESS  
**Franks** Lb. **49c**

BONELESS SWIFT  
**Beef Stew** Lb. **69c**

LONGHORN  
**Cheese** Lb. **49c**

RIPE & FIRM  
**BANANAS**  
2 Lbs. **29c**

**PEACHES**  
2 Lbs. **29c**

FRESH  
**BUTTER** Lb. **59c**

**NORTHLAND FOOD STORES**



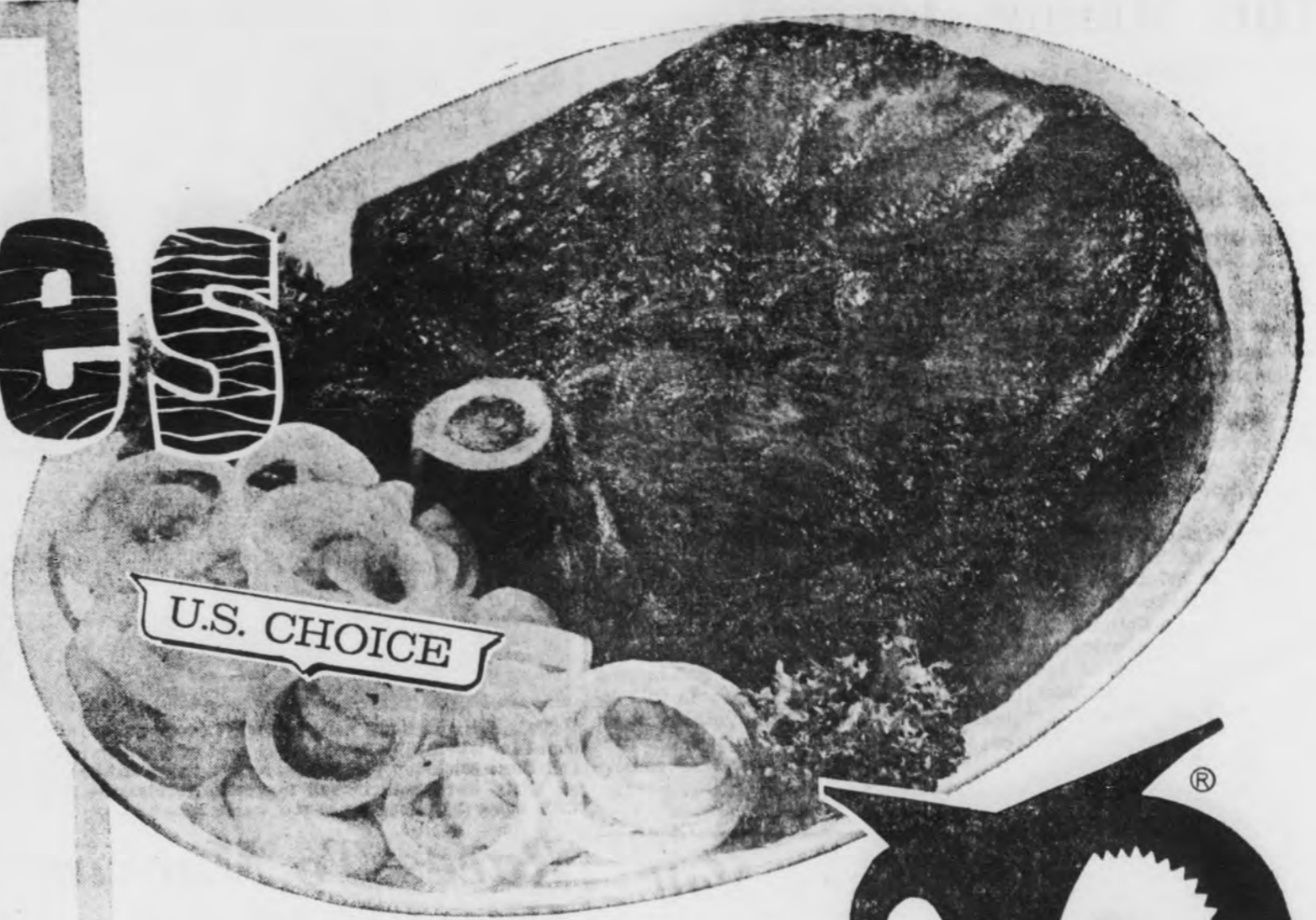
Red Owl's 'U.S. Choice' Beef Steaks for Your

# Barbecue

U.S. CHOICE, RED OWL INSURED BEEF  
**Round or Swiss STEAK** LB. **69¢**

U.S. CHOICE, RED OWL INSURED BEEF  
**Sirloin STEAK** LB. **89¢**

U.S. CHOICE, RED OWL INSURED BEEF  
**T-Bone or Club STEAK** LB. **99¢**



U.S. CHOICE, RED OWL INSURED BEEF, RUMP PORTION  
**Boneless Roast**... LB. **89¢**

FOR STEW OR SHISH-KABOB  
**Boneless Beef**... LB. **69¢**

FLAVOREE SLICED WILSON CERTIFIED COOKED CHUNK  
**Bacon** 1 LB. PKG. **45¢** **Salami** LB. **49¢**

GRADE A-YOUNG HENS-8 TO 12 LB. AVERAGE  
**Fancy Turkeys**... LB. **35¢**

RED OWL INSURED-EXTRA LEAN  
**Ground Round**... LB. **69¢**



**EASY-TO-SERVE... EASY-TO-SAVE FOODS... at RED OWL!**

FROZEN-SALISBURY STEAK, BEEF, FRIED CHICKEN, MEAT LOAF, TURKEY, OR HAM  
**Morton Dinners** 11-OZ. PKG. **39¢**

WHITNEY BRAND  
**Pink Salmon** 1-LB. CAN **49¢**

HEINZ-RICH TOMATO FLAVOR  
**Tomato Soup** 9 16-OZ. CANS **\$1.00**

COASTAL FROZEN-REGULAR OR  
**Pink Lemonade** 8 6-OZ. CANS **\$1.00**

RED OWL SLICED  
**White Bread**  
 1 1/2-LB. LOAF **25¢**

TOILET TISSUE-WHITE OR COLORS  
**Northern** 12 ROLLS **\$1.00**

CHICKEN-OF-THE-SEA 6 1/2-OZ. CANS **\$1.00**  
 RED OWL GRAHAM 1-LB. BOX **29¢**  
**Crackers**

"JUNE IS DAIRY MONTH"  
 FARMDALE-CHOICE OF 4 FLAVORS  
**Ice Cream** 1/2-GAL. **69¢**  
 URBAN SQUARE  
**Cottage Cheese** 12-OZ. CTN. **22¢**  
 FARMDALE  
**Colby Cheese** LB. **49¢**  
 PICT RIPE ELBERTA BLACK KNIGHT WHOLE, UNPEELED  
**Peaches or Apricots** 4 29-OZ. CANS **\$1.00**  
 MANDARIN ORANGES  
**Geisha Oranges** 4 11-OZ. CANS **89¢**  
 RED OWL SHORTENING  
**Golden Mixo** 3-LB. CAN **53¢**  
 BAKER'S GLAZED (5¢ OFF)  
**Chocolate Chips** 12-OZ. PKG. **35¢**



BAKED  
**B-M BEANS**  
 4 18-OZ. JARS **\$1.00**

## RED OWL

Who gives a hoot about YOU? Red Owl, that's who-o-o!

Redeem the coupons from your 'Home Handyman' Encyclopedia & 'Garden Guide' Coupon Mailer Booklet at Red Owl this week.

LARGE SIZE, VINE-RIPENED  
**CANTALOUPE**  
**4 \$1.00**  
 FOR **1-**

FIRM, MEATY  
**Hot House Tomatoes** LB. **29¢**

**Fresh Juicy Limes** 6 FOR **19¢**

VANILLA OR ASST. SANDWICH  
**Cookies** 2 Lb. Pkg. **49¢**

HERSHEY, BABY RUTH, MILKY WAY OR SNICKERS  
**Candy Bars** Pkg. Of 10 **39¢**

DULANEY FRENCH STYLE GREEN 15-OZ. CANS **89¢**  
**Beans** 5

DINTY MOORE BEEF 24-OZ. CANS **89¢**  
**Stew** 2

SAVE S & H GREEN STAMPS...  
 America's oldest and most outstanding trading stamp plan that is designed to help you save as you shop... and available to you at friendly Red Owl.

EVAPORATED MILK <b>CARNATION</b> 3 14-OZ. CANS <b>46¢</b>	INSTANT <b>NESTEA</b> (10¢ OFF) 1 1/2-OZ. JAR <b>79¢</b>	INSTANT <b>NESTEA</b> (25¢ OFF) 3-OZ. JAR <b>\$1.19</b>	(5¢ OFF) <b>Fleecy White Bleach</b> GAL. <b>54¢</b>	<b>TREND</b> 2 LGE. PKGS. <b>39¢</b>	LIQUID <b>TREND</b> 22-OZ. BTL. <b>49¢</b>	DUTCH <b>CLEANSER</b> 2 14-OZ. CANS <b>33¢</b>
SOAP (1¢ SALE) <b>SWEETHEART</b> 4 REG. BARS <b>35¢</b>	<b>BLU-WHITE</b> 11-OZ. PKG. <b>39¢</b>	BAG SOAP <b>WRISLEY'S</b> 6 BARS IN BAG <b>39¢</b>	CHOC. or STRAWBERRY <b>NESTLE'S</b> 'QUIK' 16-OZ. CAN <b>45¢</b>	CHOCOLATE <b>NESTLE'S</b> 'QUIK' 2-LB. 6-OZ. CAN <b>99¢</b>	BEADS-O <b>BLEACH</b> 18-OZ. PKG. <b>41¢</b>	NABISCO <b>PRETZELS</b> 8-OZ. PKG. <b>33¢</b>
			<b>Little Bo-Peep Ammonia</b> QT. <b>23¢</b>			TOOTHPASTE (10¢ OFF) <b>PEPSODENT</b> FAMILY SIZE TUBE <b>73¢</b>



**A week of WONDER VALUES!**

# NATIONAL'S BIG DOLLAR DAYS!

"You Just Can't Beat That National Meat!"



PRICES IN THIS FOOD AD ARE GOOD THROUGH SATURDAY, JUNE 22, 1963!

- Everyday Low Priced!**
- Salad Dressing Top-Taste Brand 2 32-Oz. Jars 89¢
  - Natco Ketchup Good on All Foods 4 14-Oz. Btles. 65¢
  - Salad Dressing Holsum 1000 Island 8-Oz. Btle. 19¢
  - Natco Tea Bags 50-Cr. Pkg. 49¢
  - Orange Soda or Top-Treat Cola, Strawberry or Root Beer 6 12-Oz. Btle. Pack 39¢
  - Beef Stew Libby's Brand 24-Oz. Can 49¢
  - Peanut Butter Natco Crunchy or Creamy 4-Lb. Jar 51¢

## CHUCK ROAST

**33¢**  
Lb.

BLADE-CUT  
Cut From Colorado Corn-Fed Beef, Cut and Trimmed the National Value-Way Unconditionally Guaranteed!

CHUCK STEAKS  
Blade Cut  
Lb. 43¢

Center Cut  
CHUCK ROAST  
Lb. 39¢

## Ground Chuck

or Beef Stew From Colorado Corn-Fed Beef  
Lb. 69¢

Chuck Roast . . . . . Boneless Colorado Corn-Fed Beef Lb. 59¢

Beef Roast . . . . . Cut from National's Boneless rolled Colorado corn-fed beef Lb. 69¢

Smoked Butts . . . . . Bath or Top-Taste or Oscar Mayer Lb. 59¢

Sliced Bologna Oscar Mayer or Liver Sausage or Sandwich Spread 3 7-Oz. Pkgs. \$1.00

Luncheon Meat National's Own Top-Taste Sliced Olive Loaf, Bologna or Pickled Pimento 1-Lb. Pkg. 55¢ Your Choice

Bacon . . . . . Top-Taste Thin Sliced 1-Lb. Pkg. 55¢

So-Fresh Breaded FISH STICKS . . . . . 3 10-Oz. Pkgs. \$1.00 Sea-Freeze BREADED SHRIMP . . . . . 1-Lb. Pkg. 75¢

National's Top-Taste Baked Fresh Daily

SANDWICH BREAD 1 1/2-Lb. Loaf	RAISIN BREAD 1-Lb. Loaf	TOP-TASTE DONUTS 12-Cr. Pkg.
-------------------------------	-------------------------	------------------------------

Mix 'Em or Match 'Em **2 for 49¢** Reg. 29¢ Ea. Buy Two Save 9¢

- Pillsbury Hash Browns Potatoes 9-Oz. Pkg. 39¢
- Dove Soap With Cold Cream Added 2 Bath Bars 49¢
- Mayonnaise Hellman's Brand 32-Oz. Jar 69¢

- Fresh Frozen Foods!**
- Pizza Pie Nicky's See Coupon for 50 Extra Stamps 3 6-Oz. Pack 99¢
  - Spaghetti On Cor w/Meat Sauce 20-Oz. Pkg. 29¢
  - French Fries Garden Fresh Crinkle Cut 2-Lb. Bag 39¢

**COUPON**

REDEEM FOR . . . . . **50 GIFT HOUSE STAMPS**

With the Purchase of 1-Lb. Armour Star SKINLESS WIENERS . . . . . 1-Lb. Pkg. 55¢

GOOD AT ANY NATIONAL FOOD STORE

One Per Family Expires Saturday, June 22nd

**COUPON**

REDEEM FOR . . . . . **25 GIFT HOUSE STAMPS**

With the Purchase of 3 Lbs. of Yellow or White Onions . . . . . 3-Lb. Bag 45¢

GOOD AT ANY NATIONAL FOOD STORE

One Per Family Expires Saturday, June 22nd

**COUPON**

REDEEM FOR . . . . . **50 GIFT HOUSE STAMPS**

With the Purchase of Frozen Nicky's PIZZA PIE . . . . . Three 6-Oz. Pies 99¢

GOOD AT ANY NATIONAL FOOD STORE

One Per Family Expires Saturday, June 22nd

**COUPON**

REDEEM FOR . . . . . **50 GIFT HOUSE STAMPS**

With the Purchase of Three Welch's APPLE-GRAPE JUICE . . . . . 3 22-Oz. Cans \$1.00

GOOD AT ANY NATIONAL FOOD STORE

One Per Family Expires Saturday, June 22nd

**COUPON**

REDEEM FOR . . . . . **50 GIFT HOUSE STAMPS**

With the Purchase of Aunt Nellie's Pine-Orange, Pine-Orange or Orange FRUIT DRINKS . . . . . Three 46-Oz. Cans \$1.00

GOOD AT ANY NATIONAL FOOD STORE

One Per Family Expires Saturday, June 22nd

**NATIONAL'S COOK-OUT SPECIAL**

## Young Turkeys

A Cook-out Special! Small, Young and Tender

Lb. **37¢**

Sknls. Wieners Armour Star See Coupon for 25 Extra Stamps 1-Lb. Pkg. 55¢

**"Dawn Dew Fresh Produce!"**

# BANANAS

Yes, we have nice bananas! . . . lots and lots of them, and they're yours for so little. Pick up a bunch of beauties . . . golden ripe bananas to enjoy from morning 'til night. Have banana slices on your cereal. Pack an easy eatin' banana in each packed lunch. Create super-banana splits for dessert. And now's the time to bake a banana cake or banana bread to take along on a picnic.

Jumbo Size, Tart SUNKIST LEMONS . . . . . 6 for 49¢

Crisp, Solid Heads NEW CABBAGE . . . . . Lb. 9¢

Crisp, Solid Newton or WINESAP APPLES . . . . . 2 Lbs. for 49¢

U.S. No. 1 Long WHITE POTATOES . . . . . 25 Lb. Bag \$1.39

Very Finest Quality Full of Juice Dozen Only **69¢**

Largest Grown Very Finest Quality Up To 28 Lbs. Each **99¢**

Jumbo Size, Tart SUNKIST LEMONS . . . . . 6 for 49¢

Crisp, Solid Newton or WINESAP APPLES . . . . . 2 Lbs. for 49¢

U.S. No. 1 Long WHITE POTATOES . . . . . 25 Lb. Bag \$1.39

Very Finest Quality Full of Juice Dozen Only **69¢**

Largest Grown Very Finest Quality Up To 28 Lbs. Each **99¢**

**Sunkist Oranges** Very Finest Quality Full of Juice Dozen Only **69¢**

**Watermelons . . . . .** Largest Grown Very Finest Quality Up To 28 Lbs. Each **99¢**

**FRESH CARROTS** Crisp, Good in Relish Dish With Olives and Peppers **2 Lb. Pkgs. 29¢**

**PLUMS** JUICY - SWEET - FINEST QUALITY CALIFORNIA **Lb. 29¢**

## NATIONAL'S BIG DOLLAR DAYS!

Pork & Beans Libby's Vegetarian Molasses or Tomato Sauce 8 14-Oz. Cans	Bathroom Tissue Softie White or Colored 16 Rolls
Sweet Peas Garden Fresh Early June 7 16-Oz. Cans	Tomatoes Garden Fresh 7 16-Oz. Cans
W. K. Corn Aunt Nellie's 7 16-Oz. Cans	Fruit Mix Sacramento Brand 5 16-Oz. Cans
Applesauce Suntint Delicious 3 35-Oz. Jars	Sliced Oranges Mandarin Flavorful 5 11-Oz. Cans
Bartlett Pears Natco Brand 5 17-Oz. Cans	Tomato Juice Libby's Brand 3 46-Oz. Cans
Fruit Juice P. L. Unsweetened Pineapple 3 46-Oz. Cans	Fruit Drinks Aunt Nellie's Pine-Orange, Pine-Orange or Orange 3 46-Oz. Cans
Top-Treat Ice Cream Toppings 5 11-Oz. Cans	

**FREE • FREE • FREE**

Redeem the two coupons that you received in the mail for this week for . . .

**50 Free Gift House Stamps**

With the Purchase of Three 29-Oz. Cans of Orchard Fresh Fruit Cocktail . . . 3 for \$1

**50 Extra Gift House Stamps**

NO PURCHASE NECESSARY - ADULTS ONLY ALSO CHECK YOUR NATIONAL FOOD MELMAC COUPONS FOR THIS WEEK.

**Fresh Dairy Foods!**

- Large Eggs So-Fresh Grade "A" Doz. Only **43¢**
- Bulk Butter Grade "AA" Lb. Only **69¢**
- Swiss Cheese Open Eye Lb. **59¢**



Excluding fair trade and minimum mark-up items!

SURF ALL-PURPOSE DETERGENT 15c Off 50-Oz. Pkg. <b>64¢</b>	FOR EVERYTHING Breeze Detergent 15-Oz. Size <b>35¢</b> 38-Oz. Size <b>83¢</b> Dish Towel Pack \$1.39 4-Lb. Size	NEW IMPROVED RINSO BLUE 5c Off 21-Oz. Pkg. <b>30¢</b> 10c Off 56-Oz. Pkg. <b>69¢</b>	HEAVY DUTY DETERGENT "VIM" TABLETS Reg. Size 41¢ 35c Off Jumbo Size <b>\$2.09</b>	FOR AUTOMATICS ACTIVE "ALL" 3-Lb. Pkg. <b>79¢</b> 19-Lb. Pkg. <b>\$2.29</b> 23-Lb. Pkg. <b>\$4.59</b>	WITH CONTROLLED SUDS FLUFFY "ALL" 48-Oz. Pkg. <b>79¢</b>	ESPECIALLY FOR DISHWASHERS DISHWASHER "ALL" 20-Oz. Pkg. <b>49¢</b>	GENTLE LIQUID "ALL" 32-Oz. Btle. <b>75¢</b>
GENTLE TO HANDS LUX LIQUID 12-Oz. Btle. <b>35¢</b> 22-Oz. Btle. <b>60¢</b> Quart Btle. <b>87¢</b>	NEW, PINK LIQUID FOR DISHES SWAN LIQUID 12-Oz. Btle. <b>35¢</b> 22-Oz. Btle. <b>60¢</b> 32-Oz. Btle. <b>87¢</b>	LIQUID LAUNDRY DETERGENT LIQUID WISK Pint <b>43¢</b> 32-Oz. Tin <b>75¢</b> 1 1/2-Gal. <b>\$1.39</b> Tin	GOLDEN LIQUID HANDY ANDY 28-Oz. Btle. <b>69¢</b>	WITH AMMONIA LIQUID HANDY ANDY 20-Oz. Btle. <b>69¢</b>	FOR A LOVELY COMPLEXION LUX TOILET SOAP 2 Reg. Bars <b>23¢</b> 2 White or Colored Bath Bars <b>33¢</b>	FOR ACTIVE PEOPLE LIFEBOUY SOAP 3 Reg. Bars <b>37¢</b>	"PRAISE" SOAP 10c Off Pack 10c Off Pack 3 Reg. Bars <b>34¢</b> 2 Bath Bars <b>31¢</b>



Anderson-Groesser



(Photo by Homburg's Studio)

ISHPEMING — A double ring ceremony Saturday morning united in marriage Alma Marie Anderson, Traverse City, daughter of Mr. and Mrs. Alfred E. Anderson of Ishpeeming, and Robert L. Groesser, son of Mr. and Mrs. Lewis Groesser of Glen Arbor. The Rev. Clement J. LePine performed the ceremony at 11:30 in St. Joseph's Church.

Summer Tea Of Isabella Unit June 20

The annual summer officers' tea of Father Marquette Circle of the Daughters of Isabella has been scheduled for next Thursday in the garden area at the rear of the Meadowbrook Nursery.

New Names In The News

RICHARDSON — A daughter, Terrie Lee, was born June 12 at the Munising Memorial Hospital to Mr. and Mrs. Frank Richardson, Munising.

Larson-Anderson



(Photo by Maki Studio)

ISHPEMING — A ceremony Saturday in the Trinity Lutheran Church united in marriage Patricia Gladys Larson, daughter of Mr. and Mrs. Delbert Larson, and Royden George Anderson, son of Mr. and Mrs. Oscar Anderson, Palmyra.

92 Attending Presbyterian Bible School

A total of 92 boys and girls between the ages of 4 and 12 are enrolled in the annual Vacation Church School which opened Monday at the First Presbyterian Church. It was announced today by Miss Helen Stringer, director of Christian education at the church.

Carlson-Dix



(Photo by Homburg's Studio)

ISHPEMING — Mr. and Mrs. Carl A. Carlson announce the marriage of their daughter, Bonnie Ann, to James William Dix, son of Mr. and Mrs. John Dix, Houghton.

Carol Hoppe Luoma, Sgt. Robert D. Scott Marry In Negaunee

NEGAUNEE — Marriage vows were exchanged last Saturday in the Immanuel Lutheran Church by Carol Hoppe Luoma, daughter of Mr. and Mrs. Ernest Hoppe of Marquette, and Sgt. Robert Duane Scott, Marquette, son of Mr. and Mrs. James K. Scott of Phoenix, Ariz.

Varti-Ostaneck



(Photo by Mary Jayne Hallifax)

Announcement has been made here of the wedding Saturday in Ontonagon of Janice Mae Weza, a student at St. Luke's Hospital School of Nursing from Ontonagon, and Frederick A. Rantala, Alton, who graduated from Northern Michigan University here.



(Photo by Maki Studio)

ISHPEMING — Mr. and Mrs. Carl A. Carlson announce the marriage of their daughter, Bonnie Ann, to James William Dix, son of Mr. and Mrs. John Dix, Houghton.

Supper On St. John's Church Lawn Planned For Monday Evening

St. John's Altar and Rosary Society will hold its annual summer picnic Monday evening on the church lawn.

Homemaking Tips

To avoid slipping accidents on step ladders, paint each step and, while the paint is still wet, sprinkle each step with fine sand.



This Week - Milk Good For Everyone

As published in the "Nutrition News" (Michigan Department of Health) the following amounts of food have approximately the same amounts of calcium (and incidentally these are the best food sources): 1/2 cup whole milk, 1/2 cup skim milk, 1 1/2 tablespoons dry...

Grace Methodists' 'Shopper's Snack' Is Benefit For Campers. A 'shopper's snack' is scheduled tomorrow in the basement of the Grace Methodist Church.

EBEN GRADUATES. The bride is a graduate of Eben High School and Northern Michigan University, where she was affiliated with Beta Omega Tau sorority and the Neweta Club. She is a teacher in the Gladstone High School home economics department.

YARDLEY 'ONCE IN A WHILE' SALE! INCLUDES AN ASSORTMENT OF FRAGRANCES AND CONSISTS OF \* Colognes \* Perfumes \* Body Powder \* Talcum Powders \* And Sets. Morrison's MIRACLE DRUG STORE. Ash and Jopling Streets. Telephone HU 6-4443. Ishpeeming, Michigan.

We Help You To Make A Speedier Recovery! Today, your doctor can make you well faster. We help by filling his prescriptions with the utmost precision. OPEN EVENINGS 'TIL 9:00 P.M. MARQUETTE PHARMACY JIM & JACK ERSPAMER 221 W. WASH. ST. CA 6-3712



# \$67,889 To Be Collected In Taxes By L'Anse Village

L'ANSE — Collection of \$67,889 in village taxes, as authorized by the L'Anse Village Council, will begin here July 1.

The council this month approved levying of 29 mills on each \$1,000 assessed valuation to provide funds for village 1963-64 operations. The rate is levied on property assessed at \$2,341,000, which will produce \$1,042 more than was collected the past year.

Allocation of the \$67,889 in the budget set up for the coming 12-month period follows:

General fund, \$28,092; sewage plant, \$16,387; highway improvement, \$11,705; garbage removal, \$4,662; special advertising and signs, \$4,662; and cemetery operation, \$2,341.

In other action taken at its June meeting and not previously reported, the council:

• Agreed to thorough discussion of wages and health insurance at its July session.

• Authorized installation of new street lights from Board St. to the court house (cost estimated at \$400 and the purchase of new street signs (cost \$300). The new street lights will be incandescent fixtures, to be installed on the old standards, with the wiring placed underground.

• Approved a "thorough audit" of village books by the Hancock certified public accountant firm of Singler, Fleury & Cybulski. Village Clerk G. Glen Sands told the council he believed such an audit — in preference to the "financial statement" undertaken last year — would be valuable in view of the fact that the city soon will issue revenue bonds to purchase a 1,000-kilowatt generator.

• Called for a study of proposals, advanced by Village President Kenneth Kent, to be contained in a new cemetery ordinance. Kent's proposals included: (1) a plan for perpetual care at the cemetery; (2) a village-financed program of perpetual care for all past village presidents and clerks; and (3) installation of a gate which could be locked at 9 every night to prevent motorists from parking there and throwing beer cans and other debris into the graveyard. Erection of the gate was approved, while the cemetery

committee, comprised of Paul VanAble, Howard Abuli and Leonard Smith, will study the other proposals.

• Turned over to the insurance committee for further investigation and cost study recommendations made by a Hartford Insurance Co. inspector following a tour of village facilities. Among his proposals were installation of fire extinguishers and repairs to wiring. The committee also will check into the advisability of liability insurance at the village-operated ski hill, where a L'Anse child suffered a broken leg last winter.

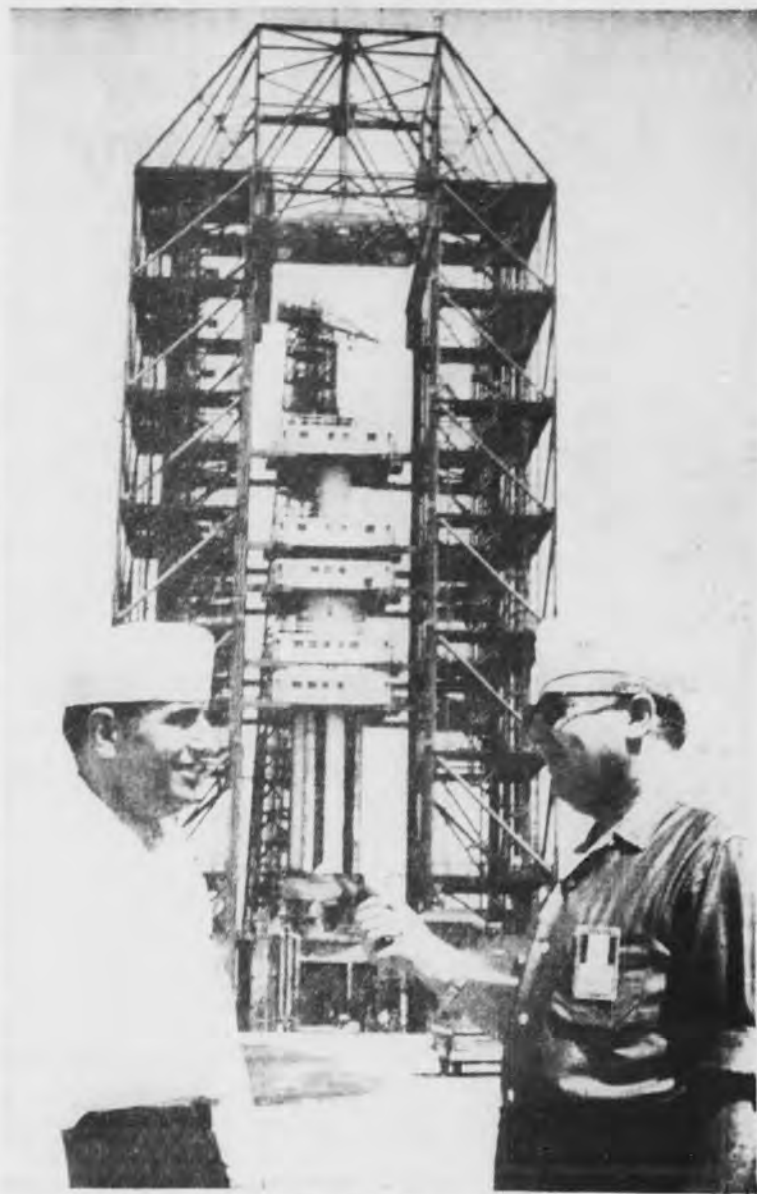
• Referred to the building committee suggestions for clarifying the village building code.

• Heard a report from Kent that a Celotex Corp. request for a specialty coded fire alarm signal to alert employees at the plant that any fire trouble there already had been taken care of.

• Authorized replacement of 10 windows and roof repairs at the village garage, with the materials to be purchased from Armstrong-Thielman Lumber Co. L'Anse, and work to be done by village personnel.

• Outlawed angle parking for a two-block area on Broad St., from Main to Fourth Sts., on the south side of the street; returned to public use two additional parking spaces formerly reserved in front of Dr. H. J. Winkler's office, now vacated, and set a 10-minute limit for parking in those two spaces.

• Set a flat rate of \$50 per call, plus a \$3 fee for each fireman answering the call, as provisions for fire protection agreement with Arvon Township. A letter from the Arvon Township Board accepting the proposal was read.



State Legion Commander Joe Paul (right) of Ishpeming and Thomas A. Kouri, Detroit, state adjutant, are shown at recent inspection of Cape Canaveral by members of the National Security Commission and American Legion officials. The Titan intercontinental ballistic missile, the Air Force's most powerful missile, is shown in the background. It stands 58 feet high and weighs 110 pounds, and has a normal range of more than 6,300 miles.

# 300 Legionnaires, Guests To Attend Testimonial Dinner For Joe Paul

ISHPEMING — Plans have been completed for the Joe Paul testimonial dinner to be held Saturday at the Ishpeming National Guard Armory. T. Jack Boase, who is in charge of arrangements, announced today.

Paul, state commander of the American Legion, will be honored that night with a program beginning with a concert by the Ishpeming Blue Notes Drum and Bugle Corps in front of the armory at 4:45.

A social hour will precede the 6 p.m. turkey dinner, to be served by the Ladies' Guild of St. John the Evangelist Church of Ishpeming.

Reservations indicate that about

300 local and state Legionnaires and other guests will attend. Various national and state Legion officers, as well as zone and district officers, will be here for this occasion.

Boase again pointed out that, during Paul's tenure as commander of the Department of Michigan, he has carried the name of Ishpeming throughout the state.

"Commander Paul has been a constant salesman for Ishpeming and the entire Upper Peninsula as the first state commander in many years from this area," he commented. "This is our way of saying 'Thank you.'"



ALLEY OOP

WASH TUBBS

FRECKLES

BARNEY GOOGLE

BLONDIE

HENRY

RIP KIRBY

STEVE CANYON

BEN CASEY

# Two Fined For Driving While Drunk

NEGAUNEE — Judge William Haupt levied fines and costs totaling \$177.60 on four drivers who appeared in municipal court yesterday following their arrest by city police for motor vehicle code violations.

Arne E. Luoma, Negaunee, and Melvin Garceau, Ishpeming, who were picked up on drunk driving charges, each ordered to pay a \$30 fine and \$10.10 court costs each. James J. Schmitz, Mill Point, Wis., who was nabbed for reckless driving, paid a \$25 fine and \$3.70 costs.

Making an unsafe start from a stopped position resulted in payment of a \$25 fine and \$3.70 costs by Paul M. Jarvi, Negaunee Township.

# Court Rules Merger Would Violate Law

WASHINGTON (AP) — The Supreme Court decided merger of the Philadelphia National Bank and Girard Trust Corn Exchange Bank, both in Philadelphia, would violate anti-trust law.

The case was the first in a series in which the Justice Department has attempted to stop the mergers of banks on anti-trust grounds.

# Midsummer Festival Sunday At VFW Club; Public Invited

ISHPEMING — The public is invited to attend a midsummer festival to be held Sunday at the Veterans of Foreign Wars club grounds, according to John Goulette, chairman of the midsummer festival. Also available for public use will be a large parking area that will be patrolled.

The festival is co-sponsored by the Blue Notes Drum and Bugle Corps and the Ishpeming VFW Post. Starting with a chicken barbecue to be served from noon to 2 p.m., the program will include pony rides and games for children as well as games for adults, while the Blue Notes will give performances during the afternoon.

# IN APPRECIATION

We wish to express our heartfelt thanks and sincere appreciation to our many relatives, friends, and neighbors for their many acts of kindness during our recent bereavement, caused by the death of our husband, father and son, George Ben Johnson.

We especially wish to thank Rev. Reuben Kappala, the solemn and accurate, the Prairie Funeral Home, those who donated and drove cars, the pallbearers, those who sent flowers, cards, and donations, the ladies who served lunch, or anyone who helped in any other way. Their many acts of kindness will ever be remembered.

THE FAMILY OF GEORGE BEN JOHNSON

**DANCE TONIGHT & SATURDAY**  
TONITE — Music By DON'S COUNTRY SERENADERS  
SATURDAY Music By Rusty's Troubadours  
PIZZAS — Eat Here or Take Out  
WAGON WHEEL U.S.-41 Between Neg. and Ish.

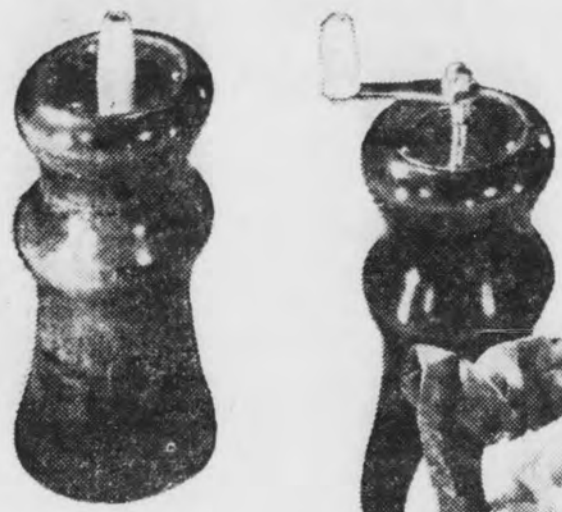
**CLOSED**  
Each Wednesday Afternoon and All Day Each Saturday, for the Summer.  
KELLAN'S JEWELRY  
IRON ST. NEGAUNEE



OUR BOARDING HOUSE

OUT OUR WAY

# WE BRING YOU FRESHNESS EVERY DAY



at **IGA**

Summer time is salad time, and your IGA Food Store has all the fixin's necessary for a crisp, tasty salad treat. Your eyes will fairly sparkle when you look at the shiny-clean rows of garden fresh lettuce and celery, bright pink radishes, cool green onions, and firm, rosy tomatoes. Make a trip today to the produce department and see for yourself that you can depend on IGA for farm fresh fruits and vegetables every day.

**Tossed Salad Time!**



**IGA DOUGHNUTS**  
2 Pkgs. **49c**

- SWISS MISS APPLE OR CHERRY PIES ..... 4 8 Inch **\$1.00**
- NESTLE'S QUIK ..... 1 Lb. Can **45c**
- SPRY 5c OFF ..... 2 Lb. Can **49c**
- MAXWELL HOUSE INSTANT COFFEE ..... 8 Oz. Jar **\$1.25**
- G. W. BEET SUGAR ..... 10 Lb. Bag **\$1.49**

**SALAD DRESSING**  
MIRACLE Whip Quart Jar **49c**

FRESH-LEAN  
**GROUND BEEF**  
Lb. **39c**

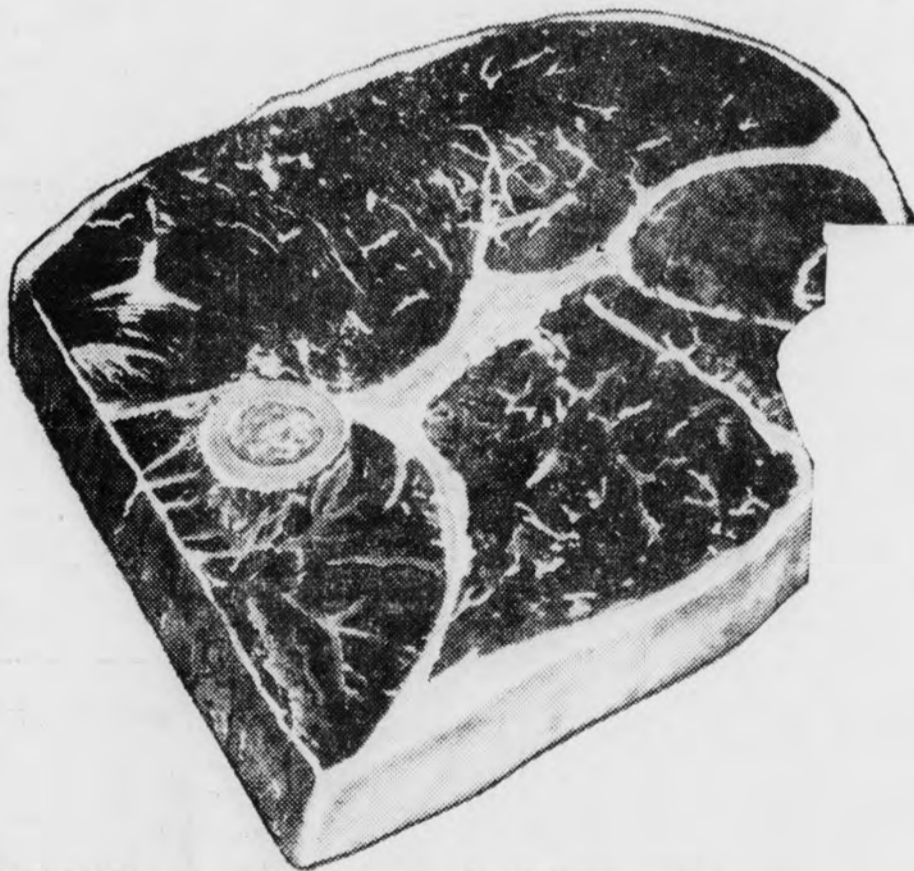
RED RIPE **TOMATOES** . . . Lb. **23c**  
CALIFORNIA **WATERMELONS** Each **69c**

CALIFORNIA **ORANGES**  
2 DOZ. **79c**

**DAIRY BUYS**  
IGA PROCESSED AMERICAN CHEESE SLICES ..... 8 Oz. **25c**  
KRAFT NATURAL SWISS CHEESE SLICES ..... 8 Oz. **49c**  
IGA TABLERITE CHEESE SPREAD ..... 2 Lbs. **79c**

**IGA APPLE SAUCE** . . . 4 25 Oz. Jars **\$1.00**  
CONTADINA **FRUIT COCKTAIL** . . . 6 15 Oz. **\$1.00**  
**APPLE KEG APPLE JUICE** 3 46 Oz. **\$1.00**

**IGA FOOD MAGIC!** by Eddie Doucette  
**CHEF'S SALAD BOWL**  
Into a bowl that has been rubbed with garlic, tear the previously washed, crisp 1 small head lettuce and small bunch romaine. Add 1/4 to 1 cup cooked ham or chicken slivers, 1/4 cup swiss cheese slivers, 1/4 cup each of carrot and celery slivers. Toss lightly with Roquefort Sour Cream Dressing and garnish with hard cooked eggs, orange segments and watercress.  
**ROQUEFORT SOUR CREAM DRESSING**  
Blend 1 cup sour cream, 1/4 cup mayonnaise, 1/2 cup Roquefort Cheese Bits.



TABLERITE  
**ROUND STEAK**  
Lb. **69c**

TABLERITE BONELESS  
**Round Steak** Lb. **79c**

TABLERITE BONELESS  
**Rump Roast** Lb. **79c**

LAMB  
**Shoulder Chops** Lb. **59c**

LAMB  
**Shoulder Roast** Lb. **49c**

ARMOUR'S STAR  
**WIENERS**  
1 1/2 Lb. Bag **79c**

ARMOUR'S STAR  
**BACON**  
2 Lb. Pkg. **99c**

BURNETTE FARMS  
**TOMATO JUICE** . . . 4 46 Oz. Tins **\$1.00**  
RED "L" FROZEN  
**ONION RINGS** . . . 5 4 Oz. Pkgs. **\$1.00**  
BLUE BONNET OLEO  
**OLEOMARGARINE** . . . 4 1 Lb. Pkgs. **\$1.00**  
IGA YELLOW  
**CLING PEACHES** . . . 5 16 Oz. Tins **\$1.00**  
WHITE CLOUD  
**TOILET TISSUE** . . . 4 Rolls **39c**  
2-2 ROLL PAK 2c OFF

- LEMON - ORANGE - ASSORTED WYLER'S DRINKS .... 3 Pkgs. **29c**
- NBC VERITHIN PRETZELS 8 Oz. Pkg. **25c**
- CARNATION INSTANT MILK ..... 8 Qt. Pkg. **68c**
- NIAGARA SPRAY STARCH ..... 15 Oz. Can **69c**

Negaunee Foodliner  
LAKEVIEW LOCATION, NEGAUNEE  
**Trehwella's Store**  
PALMER, MICH.



Miracle Foodliner  
MIRACLE CENTER, ISHPEMING  
**Mussatto's Store**  
GWINN, MICH.

- FRISKIES CHICKEN CAT FOOD ..... 2 16 Oz. Cans **29c**
- FRISKIES DOG MEAL ..... 20 Lb. Bag **\$2.69**
- FRISKIES DOG MEAL ..... 5 Lb. Bag **75c**
- FRISKIES DOG FOOD ..... 2 16 Oz. Cans **29c**







# LORD'S operation MARKDOWN

2 PC. MODERN KROEHLER  
**Living Room Set**  
• GREEN NYLON COVER  
• FOAM CUSHIONS  
REGULAR \$249.95  
**\$188**

2 PC. KROEHLER  
**Living Room Set**  
• BROWN NYLON COVER  
• MODERN DESIGN  
Reg. \$179.95  
NOW **\$138**

2 PC. KROEHLER  
**Living Room Set**  
• BEAUTIFUL BEIGE COVER  
• FOAM CUSHIONS  
Reg. \$259.95  
NOW **\$198**

For this eye-popping event, we took our big black crayon and really ran amok with it all over the place, marking down price tags, right and left, to mere fractions of the original figures. Come, save BIG!

30" ELECTRIC  
**TAPPAN RANGE**  
REGULAR \$259.95  
**\$198**  
SPEED QUEEN  
**WRINGER WASHER**  
Lord's Price **\$75.00**

3-PC. MODERN WALNUT  
**Bedroom Set**  
Double Dresser with Mirror - Large Chest and Panel Bed  
Reg. \$189.95  
**\$128**  
3-PC. MODERN CHARCOAL FINISH  
**Bedroom Set**  
Dresser, Mirror, Chest, Bookcase Bed  
Reg. \$199.95  
**\$138**

**PRICES DIVE**

- Johnson's Paste Wax ..... 64c
- Johnson's "OFF", Spray Can ..... 97c
- Johnson's Kleer Floor Wax ..... 96c
- Glade Mist Air Freshener ..... 49c
- 9 Volt Transistor Batteries ..... 3 For \$1.00
- Ladies' Schick Electric Shavers ..... \$8.88 W.T.
- Men's Schick Electric Shavers ..... \$9.95 W.T.
- Men's Remington Rollomatic Shaver ..... \$17.95 W.T.
- General Electric Table Radios ..... \$14.88
- Ironing Board Pad and Cover ..... 69c
- Armour's Vertagreen Plant Food ..... 50 Lb. Bag \$1.95
- MOST ALL COLORS Super Kem-Tone Latex Paint ..... Gal. \$4.99
- TILE RED OR GREEN Porch and Deck Paint ..... Gal. \$4.99
- COMPLETE WITH LINE - UMBRELLA TYPE Outdoor Clothes Pole ..... \$12.49
- Royal Portable Typewriters - IN ASSORTED COLORS ..... \$49.95
- POLYETHYLENE - IN ASSORTED COLORS Dish Pans-Waste Baskets-Pails ..... Choice 63c
- Electric Hair Dryers with Case ..... \$12.88
- ASSORTED COLORS Bathroom Scales ..... \$3.49

**OUTDOOR SPECIALS**

- OSCILLATING, FINGER-TIP CONTROL Sprinklers ..... \$3.10
- Badminton Set For 4 ..... \$3.75
- 6' Air Mattresses ..... \$1.69
- REG. \$32.50 - GARCIA MITCHELL "300" Fish Reel ..... \$15.00
- Fishing Rods ..... From 88c
- 3 Pc. Bar-B-Que Set ..... 88c
- Charcoal Bucket Kit ..... \$1.00
- Webb Lawn Chairs ..... \$3.99
- Webb Chaise Lounges ..... \$6.99
- Patio Tables ..... \$1.99
- Coleman Lanterns ..... \$10.89
- Coleman Coolers ..... \$10.18
- Beach Bags ..... Only 88c
- Golf Balls ..... Box of 12 \$5.95
- Golf Carts ..... \$15.95
- Car Wash Brushes ..... 94c

**KING KOIL**  
TOP QUALITY BEDDING BUY  
**Mattress or Box Spring**  
LONG WEARING STRIPED TUCKING  
YOUR CHOICE **\$34.88**

19" PORTABLE MOTOROLA  
**TV SET**  
NOW ONLY **\$119.88**

17" PORTABLE  
**TV SET**  
NOW ONLY **\$99.88**

52 GAL. ELECTRIC WESTINGHOUSE  
**HOT WATER HEATERS**  
Double Element - Guaranteed  
LORD'S PRICE **\$89.88**

**Odds 'N Ends**  
Floor Samples - Close-outs  
**BIG SPECIALS**

JUST RECEIVED - CONSTELLATION WITH ATTACHMENTS

- Hoover Vacuum Cleaner ..... \$37.88
- Hoover Floor Shampoo Polisher ..... \$43.95
- ONE ONLY - REG. \$11.95 Beige & White Pole Lamp ..... \$6.88
- ONE ONLY - REG. \$14.95 Red & White Pole Lamp ..... \$7.88
- Samsonite Card Table and 4 Chairs ..... \$29.95
- ASSORTED STYLES AND COLORS Occasional Living Room Chairs ..... From \$19.95
- CHOICE OF COLORS Recliner Occasional Chair ..... \$79.95
- CHOICE OF MODERN OR MAPLE FRAMES Large 22 x 28 Decorative Pictures ..... \$4.88
- VALUES TO \$10.00 - ONE OF EACH STYLE Assorted Lamps ..... \$5.00
- BRASS WITH WALNUT TRIM Decorative Glass Tea Carts ..... \$11.95
- ALL COLORS Haeger Pottery Ash Trays ..... 69c
- CHOICE OF STYLE AND FINISH Large Shadow Boxes ..... \$14.88
- BLACK WROUGHT IRON Large TV Snack Trays with Stand ..... Set of 4 \$6.69
- Rooster Wall Planters ..... \$4.29
- YOUR CHOICE - LARGE BLACK Wrought Iron Trivets ..... 79c

**LORD'S** **OUTFITTING COMPANY**

FREE DELIVERY IN THE U.P.      301 SO. FRONT ST. MARQUETTE      UP TO 36 MONTHS TO PAY

DIAL CA 6-2551