





We Will Be Open To 9 Tonight As Well As Friday Night For This Event

Firestone

Firestone

# 39-HOUR TIRE SALE

GOING STRONG! REMEMBER, WE'RE OPEN TO 9 TONIGHT and FRI. NIGHT - SALE CLOSSES 6 SAT.

Don't miss the greatest FIRESTONE TIRE SALE in years, featuring sensational values on every Firestone tire in our inventory.

### NOTHING HELD BACK... THEY'RE ALL ON SALE!

Hurry in and take your choice from thousands of brand new, factory-fresh Firestone tires. Our warehouses are loaded and we're priced for a sell-out.

### BEST TIRE DEAL IN TOWN FOR EVERYONE!

From compacts to limousines... all sizes and types, white-walls and blackwalls... nylons and rayons... pick your tire and your price and we guarantee you will save plenty of money.

### SUPER-BARGAINS FOR PRICE BUYERS!

Big selection of like-new original equipment, take-offs, low mileage used tires. Factory-Method New Treads, and limited stock of new tires with last year's tread designs.

### FREE TIRE MOUNTING... NO WAITING!

Fast, efficient service by tire experts, using the most modern equipment in town.

### CHOOSE YOUR TERMS... SAY "CHARGE IT!"

No down payment with your old wornout trade-in tires. Pay weekly, bi-monthly or monthly. We handle our own accounts.

### SPECIAL TRADE-IN BONUS

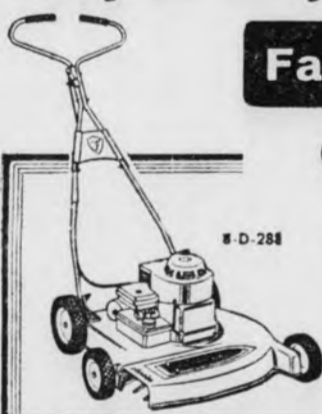
We're trading wild... you'll get an extra big trade-in allowance on your old unsafe tires. Don't risk tire failure... Swap 'em in now for famous FIRESTONES.

## We Urge You To Take Advantage Of Our Great Tire Offering Of The Year

Buy on Easy Terms...Take Months to Pay

### Fairlawn 22" ROTARY MOWER

Only **49<sup>95</sup>**



Efficient dependable mower features 3-h.p., 4-cycle Briggs & Stratton engine. Other exclusives include one-year unconditional guarantee on aluminum deck, easy-spin recoil starter, leaf and grass mulcher, and "choke-a-matic" throttle control on handle.

**100**  
A  
Week

### BAR-B KETTLE

Only **19<sup>95</sup>**

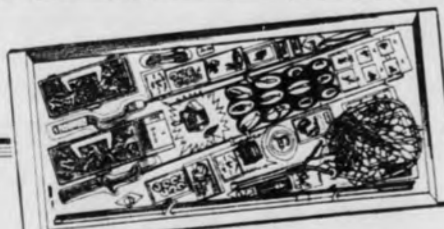


Features include slide control fire bowl adjustment, built-in fire starter, draft control, removable ash pit, chrome-plated utility shelf and chrome-plated grid and grid gate. 20" bowl; 33" high.

**75¢**  
A  
Week

### 367-Pc. FISHING SET

Only **14<sup>88</sup>**



Really 4 complete fishing sets in one, kit includes the famous names of Bronson, Ideal, Pflueger and Falcon for bait casting, spin casting, still fishing and drop-line fishing. In addition to rods and reels, set includes 2 tackle boxes with complete sets of lures, hooks, sinkers and accessories.

**75¢**  
A  
Week

OPEN TONIGHT & FRIDAY TO 9 P. M. TO HELP YOU GET THE BEST

If your tires are dangerously worn, consider this

## COMPLETE SET OFFER

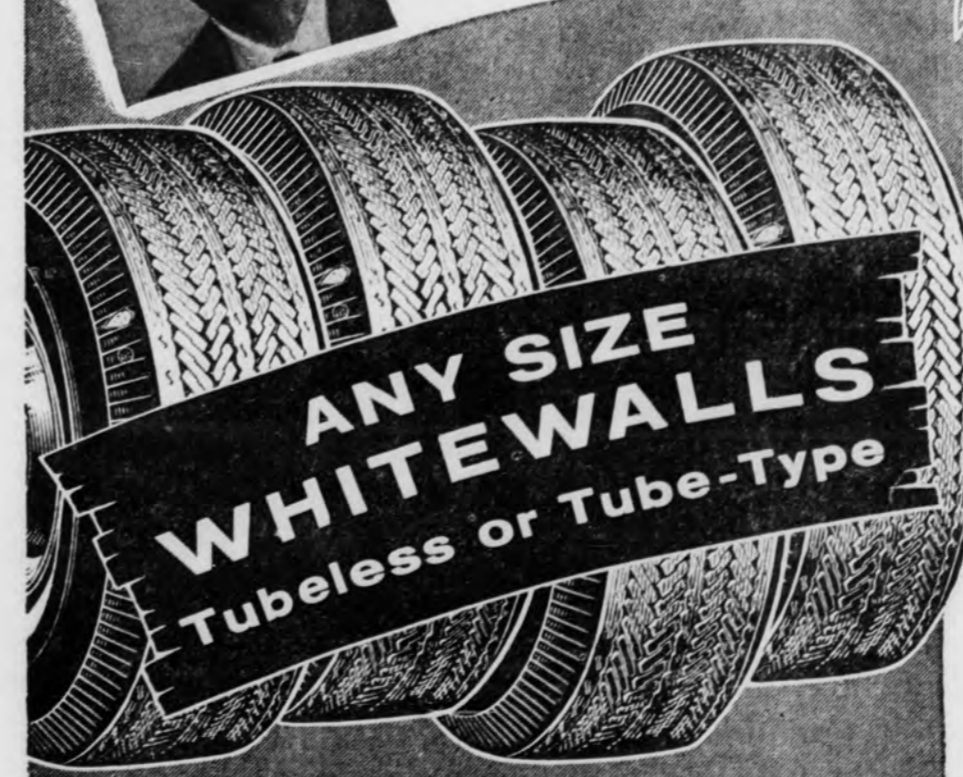
Join the millions of satisfied customers who are now using Firestone Guaranteed Retreads!



# Firestone

### De Luxe Champion New Treads

APPLIED ON SOUND TIRE BODIES OR ON YOUR OWN TIRES



ANY SIZE  
**WHITEWALLS**  
Tubeless or Tube-Type

# 4 WHITEWALLS

New 1963 narrow design or conventional wide design

ANY SIZE

# 49<sup>49</sup>

Plus tax and 4 trade-in tires off your car

12-Month Road Hazard Guarantee



## Tech Official Speaker For U. P. Scout Meet May 19 In Ishpeming

Dr. Edwin T. Williams, Houghton, vice president of Michigan College of Mining and Technology, will be the speaker for the annual Hiawathaland (Upper Peninsula) Council, Boy Scouts of America, meeting in Ishpeming this month.

R. Ralph Smith, Marquette, council executive, and Dr. Stanley Sundeen, Ishpeming, chairman of the meeting, said the meeting will be held in the C. L. Phelps School.

Dr. Williams is a native of Philadelphia and joined the Tech staff in 1960, becoming vice president in 1962. He holds degrees from the University of Pennsylvania, University of Toronto and Carnegie Institute of Technology, and received his doctorate in chemical engineering at Pennsylvania State University in 1952.

Since 1940 he has held teaching assignments at all of the above named schools plus serving with the U. S. Army Chemical Warfare Service in World War II and as an engineer with Shell Development Co. in California.

He has directed several summer institutes, written texts and research publications and served as consultant in his field of chemistry. He is a member of six professional societies and of three honorary fraternities and a Rotarian. Dr. and Mrs. Williams and their three children reside in Houghton.

**Two-Part Meeting**  
The two-part meeting will begin with a business session of the council members at 3 p.m. with the dinner meeting starting at 6 p.m.

Invitations are being sent



DR. EDWIN WILLIAMS

to all Institutional Representatives and Pack, Troop and Post leaders as well as district and council Scouters, Dr. Sundeen stated.

Reservations can be made by calling at the Scout office in Marquette or contacting one of the professional staff.

## Swans Pop Up All Over Mid-U. P.

Whistling swans are popping up all over the central Upper Peninsula.

Reports of swans being seen have come from Marquette, Alger and Baraga Counties.

Ten swans were reported seen on the Dead River in Marquette yesterday. On the previous day five swans were seen on the Chocoyau River Bayous in Lake-wood.

Richard Perry of AuTrain called to report seeing a lone swan on AuTrain Lake.

### Fully Protected

Six swans were sighted on L'Anse Bay in Baraga County over the weekend.

The public was reminded that swans are completely protected. Since they are migratory birds, anyone killing or molesting them could be subject to federal penalties.

B. A. Stephansky, Marquette, regional field administration super-

visor for the conservation department, reported that large numbers of ducks — mostly bluebills and goldeneyes — are in the Lower Harbor in Marquette now. He expected them to remain here for another week or two before flying north.

## Tech Slates Disaster Plan Practice Test

HOUGHTON — Michigan Tech's first practice test of the new college disaster plan will be held either Tuesday or Wednesday at approximately 1 p.m.

The campus alert signal will be a three-minute rising and falling blast from the warning siren. The all-clear signal will be three one-minute blasts at two-minute intervals.

### To Last 40 Minutes

The drill will last approximately 40 minutes. It is designed to provide Tech students, faculty members and employees an op-

portunity to determine how much time is required to reach shelter areas. It will also indicate what portions of the disaster plan, if any, need revisions.

Tech's disaster plan, worked out in cooperation with Civil Defense authorities, provides shelter areas in Douglass Houghton Hall and Wadsworth Hall for students, faculty members and employees, and

their families. These areas, as well as other shelter areas in campus buildings, have all recently been marked with official civil defense shelter area signs.

The U.S. Naval Academy was moved from Annapolis, Md., to Newport, R.I., during the Civil War.

## Township Equalization Increased 123 Per Cent

WHITEHALL (AP) — Whitehall Township equalization was increased 123 per cent by the State Tax Commission, Robert F. Casube, County equalization director reported Tuesday. The new figure of \$94,707 shows an increase of \$53,233 over last year's \$43,474.



## DELICIOUSLY ITALIAN!

It's LA ROSA ELBOW MACARONI. Delicious with LA ROSA SAUCES. Delicious in a cheese casserole. For real Italian taste look for the package with the red rose.

WARDS PRICES START LOW, STAY LOW. DURING MAY SALE, SAVE EVEN MORE!

**MONTGOMERY WARD**  
50<sup>TH</sup> ANNIVERSARY  
**WARDS Riverside**  
A PROVEN STANDARD OF QUALITY FOR HALF A CENTURY

**WARDS Riverside ENGINE GUARANTEE**  
If re-manufactured assembly fails because a part of the assembly is defective within 90 days from date of installation or 4,000 miles of use (whichever comes first), the part will be replaced free. Nominal labor charge.

**NEW ZIP, PEP, GO!**  
**REMANUFACTURED V-8 ENGINES**  
As many as 200 new working parts. Every bolt, plug cleaned, resized or replaced. 90-day guarantee. For Fords or Mercurys. 272, 292, 256 cu. in. engines.  
**214<sup>95</sup>**  
LESS HEADS, WITH TRADE

**BONUS! 14.95 WINDSHIELD WITH PURCHASE OF MOTOR SCOOTER**

**NEW FULL SIZE!**  
**RIVERSIDE MOTOR SCOOTER**  
Adventurous fun for everyone! Ideal for high school and college students; large 2-rider seat. 2-cycle, 4.3 hp engine delivers up to 45 mph, 110 mpg. 3-speed shift.  
**309<sup>95</sup>**

# A HISTORY OF QUALITY, SAVINGS ANY SIZE ONE PRICE



**RIVERSIDE NYLON 64 GUARANTEED 24 MONTHS**

**13<sup>88</sup>\***  
Any tube-type blackwall sizes 6.70-15, 7.10-15, 7.60-15

**WARDS NYLON 64 TUBELESS**  
Sizes 6.70-15; 7.10-15; 7.60-15; 7.50-14; 8.00-14; 8.50-14 blackwalls now **16<sup>88</sup>\***

**TUBELESS WHITEWALLS ONLY '3 MORE**  
Wards price is low for this quality tire! Built with a full 4-ply nylon cord body to resist damage from flexing, shocks, water or heat. Deep-grooved to deliver driving power to pavements wet or dry! Quiet, cool rolling for a luxury ride. \*Plus excise tax and trade-in tire.

**WARDS AIR CUSHION NYLON GUARANTEED 18 MONTHS**  
**10<sup>88</sup>\***  
Tube-type blackwall 6.70-15, 7.10-15, 6.00-16  
WARDS AIR CUSHION TUBELESS BLACKWALL  
One low price any 6.70-15; 7.50-14; 8.00-14. **12<sup>88</sup>\***

Wards thrifty Riverside—designed for the budget-minded driver who wants a dependable tire. It's a full 4-ply nylon tire with good traction and mileage for normal driving conditions. \*Plus excise tax and trade-in tire. **Whitewalls '3 more.**

**27-MONTH RIVERSIDE ST-107**  
**16<sup>88</sup>\***  
Tube-type blackwall 6.40-15, 6.70-15, 7.10-15, 7.60-15  
**RIVERSIDE ST-107 TUBELESS BLACKWALL**  
Sizes 6.50-13; 6.40-15; 6.70-15; 7.10-15; 7.60-15; 7.40-14; 8.00-14; 8.50-14, now only **19<sup>88</sup>\***

Built to outperform new car tires! Made of rugged nylon cord for 4-way protection against blowouts. Five rows of pavement-biting treads for all-weather traction! \*Plus excise tax and trade-in tire. **Whitewalls '3 more.**

**NO MONEY DOWN! MOUNTED FREE!**



**WARDS**  
New Service Center  
BLUFF ST.  
WARDS PARKING LOT  
WARDS RETAIL STORE  
WASHINGTON ST.  
**AUTO SERVICE SPECIALS**

- WARDS Riverside 4-SQUARE GUARANTEE
- 1. Against road hazards for the specified time. Adjustments prorated on months used.
- 2. Against defects in materials, workmanship for life of tread. Adjustments prorated on tread wear.
- 3. Nationwide service at all branches.
- 4. Satisfaction guaranteed nationwide. Adjustments based on sale price when returned.

5.00 Balance and Change All Four Wheels  
Balance 2 Wheels 3.00

ADJUST BRAKES, REPACK WHEELS  
ANY CAR 3<sup>00</sup>

**SATISFACTION GUARANTEED or Your Money Back -- NO MONEY DOWN Just Say "Charge It" at WARDS!**









# RED OWL'S SALE & PRIZE DRAWING

Still Time To Register • Register Free • No Purchase Necessary  
**GRAND PRIZE** 21" COLORED TV LOW BOY CONSOLE  
 RUNNER UP PRIZES: 10 BASKETS OF GROCERIES (10 WINNERS)  
 PRIZE DRAWING TO BE HELD SATURDAY, MAY 4 • YOU DON'T HAVE TO BE PRESENT TO WIN

**39¢**  
PER POUND

## New! SERVICE BAKERY Dept.

Fresh three times daily in our Red Owl Homestyle Service Bakery Department, you will find a large variety of bread, rolls and buns. Try our delicious assortment of cakes, sugar donuts and cookies. We have the finest variety of fancy baked goods such as cream puffs, eclairs, filled tortes, brownies and many others.

HOME STYLE — CHOICE OF POPPY OR SESAME (REG. 1 LB. LOAF 29c) SPECIAL

**Vienna Bread** 2<sup>1-LB.</sup> LOAVES **49c**

HOME STYLE — ASSORTED (REG. DOZEN 40c) SPECIAL

**Hard Rolls** . . . DOZEN **33c**

HOME STYLE — DANISH STYLE (REG. EACH 59c) SPECIAL

**Coffee Cakes** . . . EACH **49c**

**Jelly Rolls** . . . . **39c**

RED OWL INSURED  
**GROUND BEEF**

ARMOUR'S STAR FAMILY SIZE  
**SMOKED PICNICS**  
 FOUND **29c**

SMALL MEATY SIZE  
**Spareribs** LB. **39c**  
 FLAVOREE — HARDWOOD SMOKED  
**Sliced Bacon** . . . . . 1 Lb. Pkg. **39c**  
 ARMOUR STAR — PURE PORK ROLLS  
**Pork Sausage** . . . . . 1 Lb. Cello **29c**

PRICES GOOD THRU SATURDAY, MAY 4th . . . WE RESERVE THE RIGHT TO LIMIT QUANTITIES . . . NO SALES TO DEALERS!

**Bakery**  
 RED OWL CONEY BUNS OR  
**HAMBURGER BUNS**  
 8 **25c**  
 IN A PKG.

**MOTHER'S DAY SPECIAL**  
**150 FREE TRADING STAMPS**

WITH PURCHASE OF ANY 2 PAIR BOX OF  
**NYLONS** . . . . . at RED OWL

**50 FREE TRADING STAMPS**

WITH PURCHASE OF RED OWL DETERGENT  
**WASH** . . . . . GIANT PKG. **59c**

BOOTH FROZEN—BONELESS OCEAN PERCH  
**Fillets** . . . . . 1-LB. PKG. **39c**

FRESHLIKE—SMALL, EARLY JUNE  
**Peas** . . . . . 4 14-OZ. CANS **89c**

RED OWL NEW! STEWED  
**Tomatoes** . . . . . 6 16-OZ. CANS **\$1.00**

RED OWL TWIN PACK  
**Potato Chips** . . . . . 1-LB. BOX **39c**

## Freshlike Vegetables

- WHOLE KERNEL CORN (12-OZ. CAN)
  - CREAM STYLE CORN (14½-OZ. CAN)
  - FRENCH STYLE GREEN BEANS (12-OZ. CAN)
- 6 CANS FOR \$1.00**

DETERGENT  
**Joy Liquid** 22-OZ. BTL. **60c**

DEODORANT BAR  
**Zest** . . . . . 2 REG. BARS **31c**

PERSONAL SIZE BARS  
**Ivory Soap** 4 BARS FOR **29c**

DEODORANT BAR  
**Zest** . . . . . 2 BATH BARS **39c**

ROYAL—ASSORTED FLAVORS  
**Pudding** . . . . . 3 4-OZ. PKGS. **32c**

CORN OIL  
**Mazola Oil** . . . . . QT. BTL. **69c**

MORTON'S FROZEN CHERRY, APPLE, PEACH OR COCOANUT CUSTARD  
**Pies** . . . . . 22-OZ. SIZE **29c**  
 FARMDALE PROCESSED, AMERICAN, PIMENTO, SWISS  
**Cheese** . . . . . 8 OZ. PKG. **29c**  
 CARNIVAL—ASSORTED FLAVORS—FILL YOUR FREEZER  
**Popsicles** 2 CARTONS OF 6 **49c**  
 WIZDOM EARLY JUNE  
**Peas** . . . . . 8 16-OZ. CANS **\$1.00**

RED OWL ELBERTA—FANCY HALVES IN SYRUP  
**Peaches** . . . . . 3 30-OZ. CANS **89c**  
 BLACK KNIGHT HALVES—IN SYRUP  
**Pears** . . . . . 3 30-OZ. CANS **89c**  
 KRAFT ASSORTED ICE CREAM  
**Topping** . . . . . 4 10-OZ. JARS **\$1.00**  
 FIESTA SANDWICH STYLE—VANILLA OR ASSORTED  
**Cookies** . . . . . 2-LB. TRAY **39c**

New Crop California White Rose  
**POTATOES**  
 10 LB. BAG **49c**



SWEET CALIFORNIA  
**CARROTS** . . . . . 1-LB. BAG **10c**  
 MILD  
**Green Onions** . . . . . BUNCH **5c**  
 NEW SPRING CROP GREEN TOP  
**Red Radishes** . . . . . BUNCH **5c**

CREAMETTE—READY CUT  
**Spaghetti** . . . . . 7-OZ. PKG. **10c**

ALL-PURPOSE  
**Bisquick** . . . . . 40-OZ. PKG. **49c**

SALERNO OYSTER  
**Crackers** . . . . . 1-LB. PKG. **29c**

ALL-PURPOSE  
**Bisquick** . . . . . 60-OZ. PKG. **69c**

RED OWL PURE—CHOICE OF ELDERBERRY, GRAPE OR PLUM  
**Jellies** . . . . . 5 9-OZ. JARS **\$1.00**

RED OWL REFRIGERATED—BUTTERMILK OR HOMESTYLE  
**Biscuits** . . . . . 10 TO A TUBE 8-OZ. TUBE **5c**

# RED OWL

Who gives a hoot about YOU?...Red Owl, that's who-o-o!



THIS COUPON GOOD FOR  
**50 EXTRA FREE**  
 S & H GREEN STAMPS  
 With Purchase of \$5.00 or More (Except Cigarettes)  
 At Your Friendly Red Owl Food Store  
 Limit One Coupon Per Customer  
 Coupon Expires: Saturday, May 4

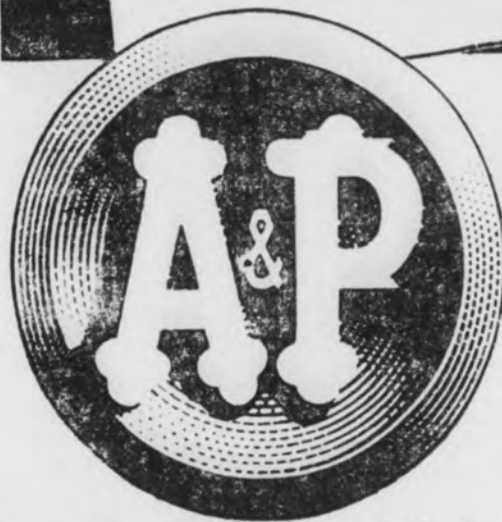
WASHDAY SOAP <b>TIDE</b> GIANT PKG. <b>79c</b>	DETERGENT <b>CHEER</b> GIANT PKG. <b>79c</b>	FACIAL TISSUE— <b>KLEENEX</b> 4 400-CT. BOXES <b>\$1.00</b>	SANITARY NAPKINS <b>KOTEX</b> BOX OF 48 <b>\$1.29</b>	HAND SOAP <b>LAVA</b> 2 MED. BARS <b>25c</b>	WASHDAY SOAP <b>OXYDOL</b> GIANT PKG. <b>83c</b>	DETERGENT FOR DISHES <b>THRILL</b> 22-OZ. BTL. <b>60c</b>	LIQUID <b>IVORY</b> 32-OZ. BTL. <b>87c</b>
--	--	---	---	--	--	---	--



**DON'T MISS THIS GIGANTIC SALE! VALUES GALORE THROUGHOUT EACH STORE!**

**ANNUAL EVENT . . .  
BY POPULAR  
DEMAND...**

**MANAGER'S  
WEEK  
SALE!**



- Baby Food Gerber's Strainer 6 4 3/4-Oz. Jars 65c
- Ajax Cleanser 14-Oz. Can 2 21-Oz. Cans 49c
- Fab Detergent 5-Lb., 3 3/4-Oz. \$1.35 47-Oz. Box 79c
- Baggies Sandwich 50's—29c Pkg. of 100 Utility 49c
- Choc. Rosettes Johnson Cookies 10-Oz. Pkg. 39c
- Tooth Paste Pepsodent Brand 5-Oz. Tube 69c
- Reynolds Wrap Aluminum Foil 75-Ft. Roll 79c
- Vi-Jon Vitamins 100 in Btl. 99c
- Bleach Flecly White One Gal. 59c
- Ammonia Little Bo-Peep 56-Oz. Btl. 35c

**Broadcast Canned Meats**

- Corned Beef Hash 15 1/2-Oz. Can 39c
- Chilled Hash 25 1/2-Oz. Can 67c
- Con Carne 16-Oz. Can 35c
- Lamb Stew 15 3/4-Oz. Can 39c
- Vienna Sausage 4 4-Oz. Cans 49c

- Trend Dry Detergent 2—12 1/2-Oz. Boxes, 39c 33-Oz. Box 49c
- Trend Liquid Detergent 22-Oz. Btl. 49c
- Sweetheart Soap Reg. Size 4 4/35c Bath Size 49c
- Mazola Corn Oil Pts., 39c 48-Oz., 99c 32-Oz. Btl. 69c
- Tuna Fish Star-Kist Chunks 9 1/4-Oz. Can 49c
- Ajax Cleaner Liquid 28-Oz. Btl. 69c

**PAPER BAGS**

- Marcal Brand Sandwich Lunch 2 Pkgs. 49c
- Garbage 2 Pkgs. 45c
- Wax Paper Kitchen Charm 2 100-Ft. Rolls 41c

**Frozen Pot Pies**

- Chicken, Beef or Turkey. Buy 5—Get one FREE! 6 8-Oz. Pkgs. \$1.00

- Waffles Sunnyfield Frozen 5-Oz. Pkg. 10c
- Ice Cream Marvel Strawberry Marble Half Gal. 59c
- Strawberries A&P Frozen 3 16-Oz. Pkgs. 95c
- A&P Broccoli Frozen Spears 5 10-Oz. Pkgs. \$1
- A&P Corn Whole Kernel Frozen 6 10-Oz. Pkgs. \$1

U. S. Government Inspected Fresh

**Fryers**  
**29c** Whole Lb.  
(Cut-Up Fryers—Lb., 33c)  
Our fancy young fryers move out so fast each day—they can't be anything but fresh! Enjoy some tonight!

Super-Right Quality—End Cut Pork

**Chops**  
**29c** Lb.  
(Center Cut Rib Chops—Lb., 49c)  
(Lean Cut Chops—Lb., 59c)  
These chops are cut from plump, pampered porkers raised to give perfect eating pleasure. A&P pork chops are always tender and flavorful!

Super-Right Quality—Blade Cut Beef

**Chuck**  
**39c** Lb.  
(Beef Arm Roast—Round Bone—Lb., 55c)  
Cut from fine, grain-fed beef, Super-Right Chuck Roast never contains any stringy neck portions. Get some at this thrifty price.

- BEEF RIB ROAST Lb. 69c
- CHUCK STEAK Lb. 49c
- BEEF STEW MEAT Lb. 65c
- ALLGOOD BACON 2 Lbs. 79c
- BEEF BRISKETS Lb. 79c
- GROUND CHUCK Lb. 65c
- SKINLESS WIENERS Lb. 49c
- SKINLESS WIENERS 2 Lbs. 97c
- COD FILLETS Lb. 29c

Here's Enough

**Extra Stamps to Fill-a-Book! Each Week!**

**1,200 A&P PLAID BONUS STAMPS**

- 150 STAMPS Daily Dog Meal 25-Lb. Bag \$2.19
- 100 STAMPS G.E. Light Bulbs 4/100 Wt. \$1.00
- 50 STAMPS Ann Page Peanut Butter 24-Oz. Jar 59c
- 50 STAMPS Excel Mixed Nuts Vacuum Packed 14-Oz. Can 79c
- 100 STAMPS With This Coupon and \$7.50 Purchase Excluding Beer, Wine and Cigarettes ALL No. 75-25
- 100 STAMPS Super-Right Smoked Butt 2 to 3-Lb. 65c
- 50 STAMPS Sultana Small Stuffed Olives 10 1/2-Oz. Jar 59c
- 50 STAMPS Sliced-Processed Cheese 12-Oz. Pkg. 45c
- 100 STAMPS Bufferin Tablets 225 In Btl. \$2.37
- 100 STAMPS Nutley Oleo Case of 30/1-Lb. Pkgs. \$4.43
- 50 STAMPS Holly Carter Vanilla Ice Cream 1/2-Gal. Ctn. 98c
- 50 STAMPS Sail Dry Detergent 47-Oz. Pkg. 69c
- 100 STAMPS Crest Tooth Paste 6 3/4-Oz. Tube 83c
- 50 STAMPS Jane Parker Applesauce Loaf Ea. 45c
- 50 STAMPS Jane Parker Danish Plain Ring Ea. 49c
- 50 STAMPS Miltom White Potatoes U.S. No. 1—Meat A 10-Lb. Bag 59c

U.S. No. 1—Size A

**Red Potatoes**  
Delicious Flavor Perfect for Cooking and Baking Note Low Price!  
**10 Lbs. 39c**

Red Ripe Watermelon Sweet Good Cutting 17-Lb. Ea. 99c

**Case Lot Sale Iona Tomatoes**

Case of 24 16-Oz. Cans Iona is select quality. Stock up now!

Doz. Cans \$1.69 (Save 29c) Per Case **\$3.29** Save 67c

Look at This Special Sale of

**Cucumbers** Peppers—Green Onions or Radishes **3 for 25c**

**Fresh Large Eggs** Sunnybrook Grade A **2 Doz. 79c**

**Fruit Drinks**

A&P Pineapple, Hawaiian Punch, Hi-C Grape, R-C Apricot, Tangerine, B-C Drink **3 46-Oz. Cans \$1**

THE GREAT ATLANTIC & PACIFIC TEA COMPANY, INC.

**A&P Super Markets**  
AMERICA'S DEPENDABLE FOOD MERCHANT SINCE 1859

All Prices Effective May 4th

- Circus Peanuts Worth-19-Oz. Bag more Candy 39c
- Pineapple Slices Typhoon 20-Oz. Can 29c
- White House Evap. Milk 3 13 Fl. Oz. 41c
- Hair Spray Terry Allen 12-Oz. Btl. 77c
- Shampoo Silvikrin—Save 41c Reg. \$1.00 Special Price 7-Oz. Btl. 59c

**ALL PRICES the SAME at —MARQUETTE—ISHPEMING—NEGAUNEE**













# WHATEVER YOU DO...SHOP IGA *THIS* WEEK!



Yes, when it comes to savings, IGA is the place to shop. During this 88¢ sale, we are featuring many select items that will please both taste and budget.

If you don't find what you want in this particular ad, come in and let us serve you personally. We're sure we will be able to satisfy your every food need with our large selection of products. Remember...our boss at IGA is you, the lady who pushes the cart.

WELCH'S

Apple Grape Drink 3 32 Oz. Cans 88¢

Graf's Pop . . . 10 12 Oz. Tins 88¢



CARNATION MILK

6 Tall Cans 88¢

TABLERITE COLBY or CHEDDAR Longhorn Cheese

2 10-Oz. Pkgs. 88¢

Softweve Tissue . 4 2 Roll Pkgs. 88¢

Del Monte Pineapple Grapefruit Drink 3 46 Oz. Cans 88¢

Minute Maid Frozen Orange Delight 6 6 Oz. Cans 88¢

Royal Guest Pears . 4 16 Oz. Cans 88¢

VAN CAMPS

Pork and Beans . . 5 21 Oz. Cans 88¢

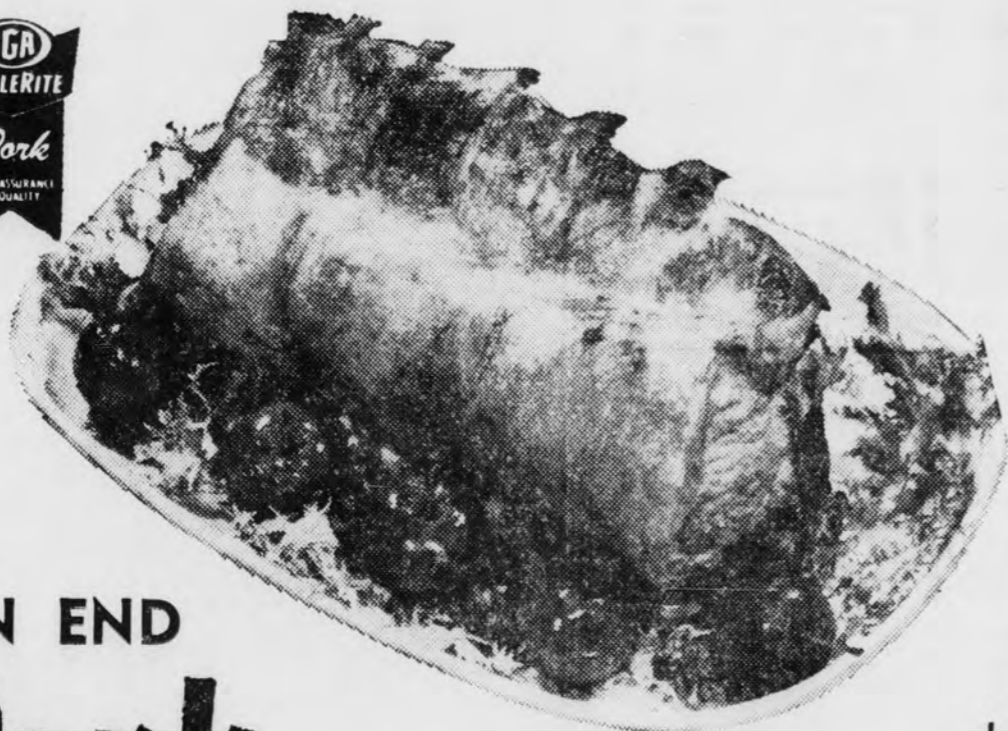
Borden's Ice Milk . . 2 1/2 Gals. 88¢

IGA Flour . . . . 10 Lb. Bag 88¢

...delicious with NABISCO PREMIUM

Saltines

29¢



LOIN END

Pork Roast Lb. 39¢

CENTER CUT PORK CHOPS Lb. 49¢

BONELESS ROLLED

PORK LOIN ROAST . Lb. 69¢

COUNTRY STYLE

SPARERIBS . . . . Lb. 39¢

MUCHMORE BACON . Lb. 49¢

FLORIDA SUGAR SWEET

WATERMELON 16 Lb. Avg. 99¢



FLORIDA FINEST INDIAN RIVER WHITE

GRAPEFRUIT . . . . 10 For 59¢

LONG GREEN SLICING

CUCUMBERS . . . . Each 5¢

OSCAR MAYER YELLOW BAND WIENERS . . . . Lb. 55¢

OSCAR MAYER SMOKIE LINKS . . . . 12 Oz. 55¢

OSCAR MAYER SMALL PORK SAUSAGE . Lb. 55¢

MAZOLA

OLEO

2 Lbs. 77¢

NIAGARA STARCH . . 12 Oz. Pkg 23¢

"OUR OWN" ANGEL FOOD CAKE . . . . Each 39¢

SIMONIZE . . . . . Quart 95¢

SIMONIZE . . . . . 1/2 Gal. \$1.59

TONE . . . . . 6 Oz. Can 79¢

PLUMITE . . . . . Can 35¢

IVALON SPONGES . . . . . Twin Pak 39¢

Negaunee Foodliner

LAKEVIEW LOCATION, NEGAUNEE

Trewhella's Store

PALMER, MICH.



Miracle Foodliner

MIRACLE CENTER, ISHPEMING

Mussatto's Store

GWINN, MICH.

IVALON SPONGE . . . . . Large 59¢

WYLER'S LEMON DRINK . . . . . 3 Pkgs 29¢

HERSHEY DAINTIES . . 6 Oz. Pkg 25¢

CHICKEN OF SEA CHUNK TUNA . . . 3 6 1/2 Oz. Cans \$1.00



## No Objections Filed At Hearing Into North Range Water Request

NEGAUNEE — No objections were filed at a Michigan Water Resources Commission public hearing here yesterday on a North Range Mining Co. proposal that would divert water from Lake Michigan for a beneficiation and iron ore briquetting plant at the Champion Mine.

Seven witnesses testified during the hearing conducted in the city hall council chambers by Commissioner Patrick Foley, with the only hint of opposition being voiced by William E. Rathman, superintendent of power production for Wisconsin-Michigan Power Co.

Rathman, noting that a proposed diversion averaging 400 gallons per minute would have a value of approximately \$2,000 annually, stated that while his company opposed in principle the diversion of water from any sources on which it has hydro-electric plants located, Wisconsin-Michigan would not object to the program, provided the diversion was limited to the 400 gallons per minute average.

**Development Plans Told**

Michael Archibald, representing North Range, outlined plans of the company for developments of its Champion Mine beneficiation and briquetting plant which, he revealed, North Range hopes to have in operation in 1964. He traced the history of the financing of the project, including steps taken to obtain an ARA loan that is ready for release when the company completes negotiations for its share of the cost of the project.

Archibald pointed out that without the projected plant the property would be exhausted of high grade reserves this year. He informed the hearing commissioner that water needs for development of low grade ores through beneficiation and briquetting were estimated at 1,200 gallons per minute for approximately a 10-day period during which the tailing pond would be filled, and thereafter an average of 400 gallons per minute. "From studies we have made, Lake Michigan appears to be the only feasible source of supply in the area," he said. "Underground at the Champion we pump only about 40 gallons per minute; two test wells proved insufficient to develop any material increase, and Champion High School at times is even forced to conserve water. In general, there is a shortage of underground water in the Champion area."

**77 More Employees**

Queried concerning the economic effect that the permit to divert water might have on the area, Archibald declared it would result in an increase when the proposed plant was in operation of approximately 77 employees from the present staff of 63 to approximately 140, and that beneficiation and briquetting would prolong the life of the Champion Mine 25 years or more.

Concerning the position of the company about the possibility of diversion having an adverse effect on the lake, Archibald noted that a North Range study showed the amount of water the company proposed to take could affect the lake level by one inch or less.

Questioned by Foley regarding prospects of employment at the end of this year, the permit to divert were not granted, the North Range representative said: "The immediate prospect is no employment, unless there is a radical change in market conditions."

**"No Injurious Effect"**

Following Archibald on the stand was Norman F. Billings, assistant executive secretary of the Water Resources Commission and chief of the hydrology division, who testified regarding studies made by his staff on the effect of diversion on the lake. The studies concerned the rate of flow of the Peshekee River for a 14-month period from July of 1961 to September of 1962 and the lake level for a 20-year period. Figures were provided by the U.S. Geological Survey.

"Based on our studies, the proposed diversion would have no injurious effect as far as the public is concerned," Billings testified. "It is the recommendation of our staff, however, that devices be installed which would annually re-

**AIRPORT.**  
DRIVE-IN THEATRE  
— NOW!! —  
AT DUSK . . . TWIN HITS

TONY CURTIS  
40 POUNDS OF TROUBLE  
AND A LOT OF JOE

SUZANNE PLESCHETTE-CLARE WILCOX  
PHIL SIVERS

CO-FEATURE

LESLIE DAVID  
CARON-NIVEN  
GUNS OF DARKNESS

THE UPTONSHU JUSTICE  
ROD LAGAN . . . THOMAS COE . . . DEAN GREGG . . . WALLEN HALL

## Buying Surge Reported By Steel Mills

NEW YORK — Steel mills have turned down some June orders because the buying rush is overwhelming, Iron Age said today.

The trade publication said that since the steel price increase, orders have jumped substantially as buyers hedged against a possible steel strike.

Steel users apparently are con-

vinced that price increases make reopening of the steel labor contract inevitable, according to Iron Age, and business men are of the opinion that the United Steelworkers Union will be a lot tougher to bargain with.

Sheet mills are reported operating at 100 per cent of capacity with orders coming in at a rate that would exceed capacity.

## OES To Honor Life Members

MUNISING — Munising Chapter, Order of Eastern Star, will hold a regular meeting at 8 to night in Masonic Hall. All life members will be honored.

## Junior-Senior Dinner In Eben School Saturday

EVEN — Eben High School's annual junior-senior dinner is to be held this Saturday, beginning at 7 p.m.

James Simpson, member of the high school faculty, will be master of ceremonies and the guest speaker will be William T. MacNeil.

**MOST SPOKEN LANGUAGE**

Language most spoken by most people than any other is northern Chinese, or Mandarin, which is used by some 460 million persons.

superintendent of schools, Munising. The program will include the crowning of the senior king and queen by the president of the junior class, Dennis Leppanen.

Members of the senior class will participate in the program, which will be concluded with remarks by Reino Kauranen, superintendent of Rock River Township schools.

Following the dinner, an all-school dance will be held with music furnished by the Rhythm Kings. Dancing will continue until midnight.

The dinner and dance are under the joint sponsorship of the junior class and the student council.

**SUMMER STORE HOURS**

**OPEN . . .**

Monday — Thursday — Friday  
9:00 A. M. to 8:00 P. M.


Tuesday — Wednesday — Saturday  
9:00 A. M. to 6:00 P. M.

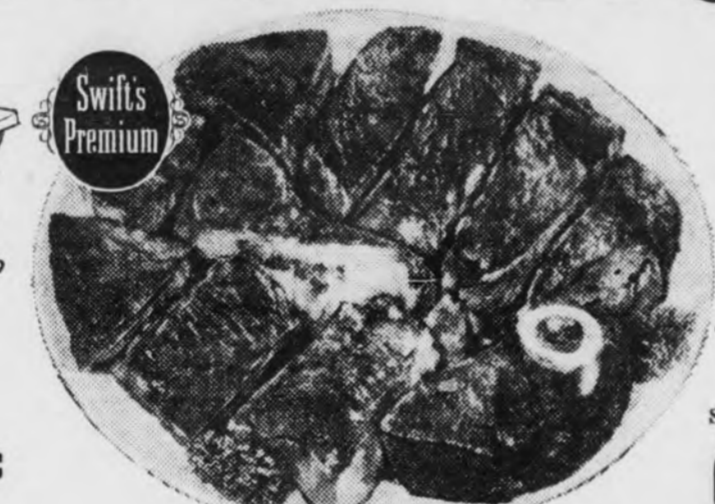
**Ramsbeth Furniture**  
BROOKTON CORNERS  
U. S. 41 — BANCROFT LOCATION

# NORTHLAND FOOD STORES

presents

## FOOD WONDER-LAND!





**SWIFT'S PREMIUM ROUND STEAK**

NONE FINER ANYWHERE

# 79¢ Lb.

5c OFF REGULAR PRICE

**DETERGENT**

**ALL**  
10 Lb. Pkg. \$2.29

**BREEZE**  
Qt. 83c

**RINSO BLUE**  
Gt. 69c

**SURF**  
Gt. 64c

**GOLDEN HANDY ANDY**  
Qt. 65c

**AMMONIATED HANDY ANDY**  
Qt. 65c

**LUX LIQUID**  
22 Oz. 60c

**SWAN LIQUID**  
22 Oz. 60c

**WISK LIQUID**  
Qt. 75c

**PLUMITE DRAIN CLEANER**  
12 Oz. 33c

**PEACHES**

GOLDEN ORCHARD 4 29 Oz. Cans \$1.00

MONARCH WHOLE OR CREAM CORN 8 16 Oz. Cans \$1.00

PAW PAW GRAPE JUICE . . . . .	24 Oz. Can	33c
MA FERKIN'S WHOLE APRICOTS . . . . .	4 29 Oz. Cans	\$1.00
AMERICAN BEAUTY SOUP TOMATO or VEGETABLE . . . . .	10 Oz. Can	10c
HOLSUM RASP. APPLE, STRAW. APPLE PRESERVES . . . . .	18 Oz. Jar	39c
BOND'S WHOLE DILL PICKLES . . . . .	Qt.	29c
BOND'S SWEET GHERKINS . . . . .	16 Oz. Jar	33c
RING MIDAS FLOUR . . . . .	10 Lb. Bag	99c
LA CHOY BEAN SPROUTS . . . . .	303 Can	15c
LA CHOY CHINESE MIXED VEGETABLES . . . . .	303 Can	39c
LA CHOY CHOW MEIN NOODLES . . . . .	303 Can	17c
LA CHOY CHOP SUEY VEGETABLES . . . . .	303 Can	29c



8c OFF REG. PRICE

DRIP or REGULAR

2 LB. CAN \$1.15

**SWIFT'S FRESH BOSTON BUTT PORK ROAST**

90% Boneless  
2 Lb. Average

# 33¢ Lb.

SWIFT'S FRESH CUT PORK STEAK

Sparkling Fresh  
Lean & Meaty

# 39¢ Lb.

SWIFT'S PREMIUM—SUGAR CURED DAISIES

Boneless Cottage Butts

# 59¢ Lb.

FRESH CREAMERY BUTTER

Lb.

# 59c

STOKELY'S FROZEN Cut Corn — Green Peas

2 10 OZ. PKGS.

# 39c

STOKELY'S FROZEN FRENCH FRIES

CRINKLE CUT or REGULAR

6 9 OZ. PKGS.

# \$1.00

McINTOSH APPLES . . . 3 Lb. Bag 49c

FRESH TENDER CRISPY CARROTS . . . 1 Lb. Bag 10c

LIFEBUOY SOAP  
3 Reg. Bars 37c

Lifebuoy Soap  
2 Bath Size 35c

LUX SOAP  
2 Reg. Bars 23c

LUX SOAP  
2 Lge. Bars 33c

PRAISE SOAP  
2 Reg. Bars 29c

PRAISE SOAP  
2 Lge. Bars 39c

VIM TABLETS  
Gt. 69c

Boot, Bloop Hit Enough For Cheney To Beat Slumping Tigers Nine

DETROIT (AP) — The Tigers' hitting slump has become contagious. The plague is spreading to the other parts of their play that had been good even while they were losing.

Bo Belinsky Stops Yanks; Birds Drop 2

Bo Belinsky of the Los Angeles Angels left-hander finished what he started for the first time this season Wednesday night, limiting the New York Yankees to four hits while George Thomas hit a grand slam homer that gave the Angels a 3-1 victory over the world champions.

Sanford Stops Buc; Banks Blasts Cards

Jack Sanford slipped down some impressive statistics when he sat down to talk contract with the San Francisco Giants this spring, such as a 247 win-loss record, including 16 in a row, a World Series shutout and a strong playoff game effort.

Never Bend is held to an easy gallop as the 3-year-old tests a muddy Churchill Downs track in workouts for Saturday's Kentucky Derby.



Never Bend is held to an easy gallop as the 3-year-old tests a muddy Churchill Downs track in workouts for Saturday's Kentucky Derby.

Nine Enter 89th Kentucky Derby

LOUISVILLE, Ky. (AP) — The entry list for the 89th Kentucky Derby slammed shut at 9:30 a. m. EST. today and the name of California's favored Candy Spots topped a field of nine for the 3-year-old classic.

Negaunee Tops IHS Trackmen In 55-54 Duel

ISHPEMING Negaunee's better dash strength gave the Miners their first dual track meet victory over Ishpeeming in over a decade, Wednesday, 55-54.

Sawyer '9' Looks Strong In Exhibition

K. I. SAWYER AFB — Sawyer will field its strongest team ever when the Lake Superior baseball League officially opens play May 19.

Bruce Crossing Funeral Home Retained Pin Title

Brown Funeral Home of Bruce Crossing buried the opposition for the third straight year, in the Land-O-Lakes Thursday bowling league.

Baseball Today's Baseball

Table with columns: National League, W, L, Pct., G.B.

Wanted-AD Information

WANTED-AD received between 8 a. m. to 5:00 P.M. Saturday until noon on Saturday.

Bo Belinsky Stops Yanks

Bo Belinsky pitched probably his finest game since his no-hitter against Baltimore last May 5.

George Thomas hits grand slam

George Thomas hit a grand slam homer that gave the Angels a 3-1 victory over the world champions.

Never Bend is held to an easy gallop

Never Bend is held to an easy gallop as the 3-year-old tests a muddy Churchill Downs track in workouts for Saturday's Kentucky Derby.

Sanford Stops Buc

Jack Sanford slipped down some impressive statistics when he sat down to talk contract with the San Francisco Giants this spring.

George Thomas hits grand slam

George Thomas hit a grand slam homer that gave the Angels a 3-1 victory over the world champions.

Never Bend is held to an easy gallop

Never Bend is held to an easy gallop as the 3-year-old tests a muddy Churchill Downs track in workouts for Saturday's Kentucky Derby.

Never Bend is held to an easy gallop

Never Bend is held to an easy gallop as the 3-year-old tests a muddy Churchill Downs track in workouts for Saturday's Kentucky Derby.

Baseball Today's Baseball

Table with columns: National League, W, L, Pct., G.B.

Wanted-AD Information

WANTED-AD received between 8 a. m. to 5:00 P.M. Saturday until noon on Saturday.

Venezuelan, Canadian, Argentine Take U.S. 'Specialties' In Pan-Am

SAO PAULO, Brazil (AP) — Only Yankee strategy which spring loose a balding Irish-hired mite, and a high-flying Sooner with iron muscles kept American track men from a Black Wednesday disaster in the Pan-American Games.

James Blewett, Ferris Institute



James Blewett, Ferris Institute thinned from Ishpeeming, looms large in the Bulldogs' bid for a successful track season.

Gwinn Gals' Game Mark Up To 277

GWINN — In the Gwinn Women's League, Edna Hocking rolled a 277, the highest game to be rolled for women in a sanctioned league on the lanes for all time.

Bruce Crossing Funeral Home Retained Pin Title

Brown Funeral Home of Bruce Crossing buried the opposition for the third straight year, in the Land-O-Lakes Thursday bowling league.

New Surgery Saved Pitcher's Leg

HOUSTON (AP) — Only surgical techniques discovered within the last five years prevented the amputation of Jim Umbrecht's cancerous right leg seven weeks ago.

Lions Bolster Defensive Roster, In Trade Mart

DETROIT (AP) — The Detroit Lions made a move to bolster the defensive tackle spot vacated when Alex Karras was suspended by recurring Floyd Peters.

McArdle's clocking of 29 minutes

McArdle's clocking of 29 minutes, 32.1 seconds broke the Pan-Am record of 30:12.2 set by Suarez in Chicago in 1959.

Pabst Pockets Marquette Major Roll-Off Title

Frank Ellison rolled a 628 (192-176-269) to lead the Olympic Major league roll-off teams this week.

Bruce Crossing Funeral Home Retained Pin Title

Brown Funeral Home of Bruce Crossing buried the opposition for the third straight year, in the Land-O-Lakes Thursday bowling league.

Advertisement for 'New Type Of Sports Queens' featuring a woman and a tennis racket.

Advertisement for 'Specialties' in Pan-Am games.

Advertisement for Bruce Crossing Funeral Home.

Advertisement for 'New Type Of Sports Queens'.

Advertisement for 'Wanted-AD Information'.

Advertisement for 'Wanted-AD Information'.

Advertisement for 'Wanted-AD Information'.

Advertisement for 'Wanted-AD Information'.

Advertisement for 'Wanted-AD Information'.

Advertisement for 'Wanted-AD Information'.

Advertisement for 'Wanted-AD Information'.

Advertisement for 'Wanted-AD Information'.

Advertisement for 'Wanted-AD Information'.

Advertisement for 'Wanted-AD Information'.



# LIVING ROOM SPECTACULAR! in Nylon Frieze! Cushioned with FOAM!

All 12 Pieces

## \$188

COMPLETE



YOU GET 4 SOFA PILLOWS

YOU GET A Foam Cushioned SOFA and CHAIR

YOU GET 2 TABLE LAMPS

YOU GET A POLE LAMP With 3-Tiered TABLE

YOU GET 3 BEAUTIFUL TABLES

**NO MONEY DOWN**  
**Beautiful, Practical Modern Styling**

Specially planned. Specially selected . . . everything for comfort and convenience. This wonderful 12 piece living room is a real value triumph! The luxurious foam-cushioned Kroehler Sofa and Matching chair are covered in rich, long wearing nylon frieze. You'll like the wide arms and tapered legs with brass ferrules. 3 tables in choice of finishes, glamorous pole lamp, 2 colorful table lamps and 4 decorator sofa pillows. Stop in and see this wonderful buy.

# WISE BUYS

at Lord's Outfitting Co.

Self Polishing  
**BRUCE'S WAX**  
NEW HIGH GLOSS FORMULA  
Lord's Low Price Qt. **81c**

South Bend Fibre Glass  
**CASTING RODS**  
5 Ft. 5 1/2 Ft. 6 Ft.  
**\$1.76 \$3.35 \$3.48**

Complete Set  
**Paint Roller & Pan**  
Only **69c**

Asst. Colors  
**Spray Enamel**  
1 qt. Can **69c**

Set of 3 Assorted  
**Lawn Tools**  
Only **63c**

Special Price  
**Hose Nozzles**  
Only **61c**

Sturdy Long Handled  
**Leaf Rakes**  
Now **79c**

Plastic  
**Garden Hose**  
50 Ft. Length **99c**

## Modern Chest

heavyweight  
SIZE 29 1/2" WIDE 15 1/2" DEEP 40" HIGH

- UTILITY ROOM
- GARAGE
- SPARE ROOM
- BASEMENT
- CHILDREN'S ROOM
- ALMOST ANYWHERE

**15<sup>88</sup>** REGULARLY **24.95**

FINISHED IN HARD PLASTI-TONE ENAMEL  
Choice of . . . GREY • DARK BROWN • LIGHT BROWN  
Decorative Brass Drawer Pulls

This hard PLASTI-TONE FINISH  
RESISTS . . . STAINS, SCRATCHES, HEAT

**"SLEEPERS CHOICE"**  
✓ TWIN SIZE REGULAR LENGTH  
✓ TWIN SIZE EXTRA LENGTH  
✓ FULL SIZE REGULAR LENGTH  
✓ FULL SIZE EXTRA LENGTH  
✓ BUTTON TUFTED  
✓ QUILTED

**FIRST TIME EVER!**  
Your Choice of Regular or Extra Length  
**"SLEEPERS CHOICE"**  
King Koil Springwall Mattress

at **1/3 LESS**  
than you'd expect to pay

With Comparable Quality Features Found in Mattresses Valued at \$69.50

## 49<sup>50</sup>

Your Choice of Quilted or Button Tufted - Regular or EXTRA LENGTH at the same low price.



MAKE YOUR CHOICE . . . of a regular or extra length genuine King Koil Springwall mattress either button tufted or quilted . . . at this special low price. 24 patented sidewall supports in the mattress and box spring prevent the edges from sagging or sloping. . . You get 1/3 more usable space and years of extra mattress life. STOP IN . . . MAKE YOUR SELECTION NOW . . . DURING THIS LIMITED TIME OFFER.



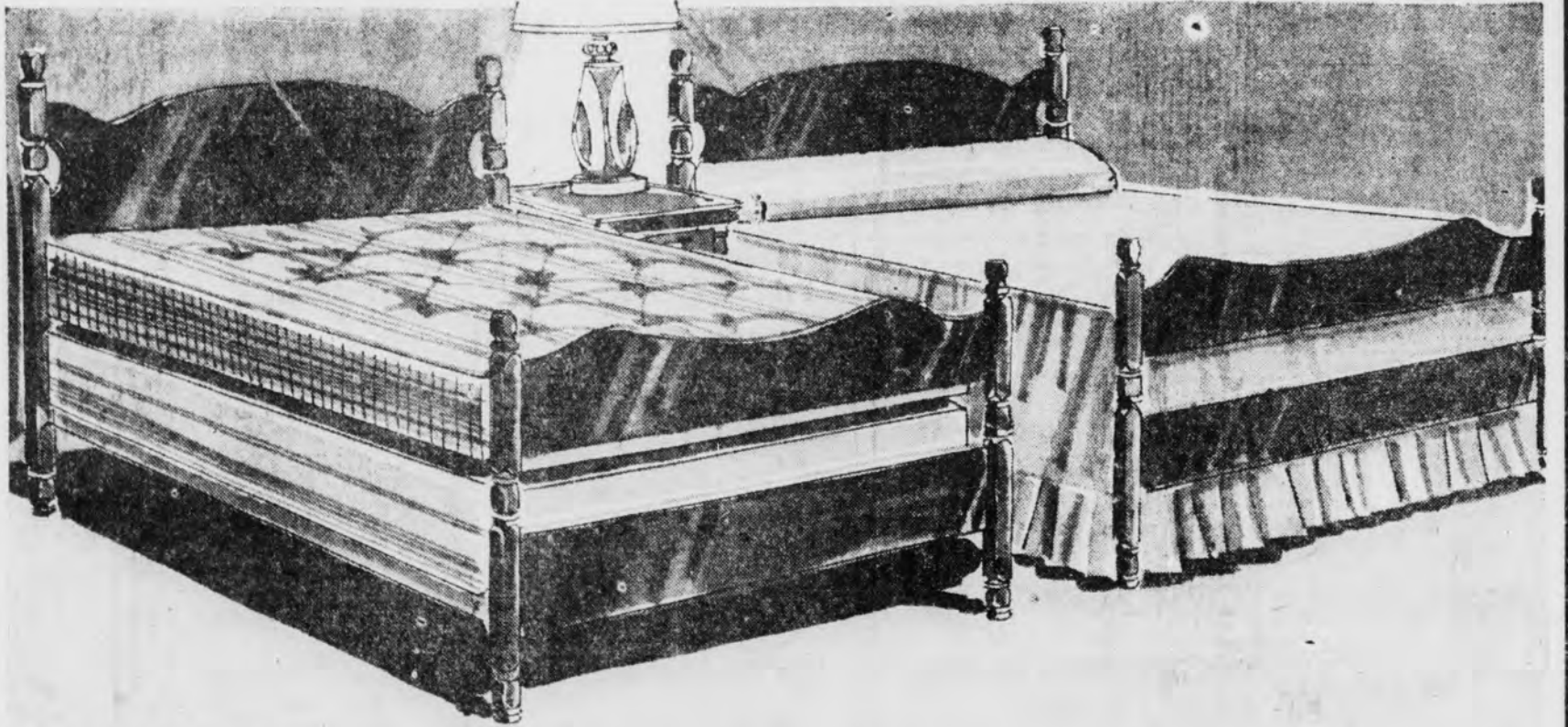
Most Wanted Colors  
**SUPER KEM-TONE PAINT**

Reg \$6.59 Galton **\$4<sup>99</sup>**



ARMOUR'S  
**VERTAGREEN PLANT FOOD**

For Lawns and Gardens  
50 Lb. Bag **\$1<sup>95</sup>**



**2 King Koil MATTRESSES** ALL 6 PCS. FOR 1 LOW PRICE  
**2 King Koil BOX SPRINGS**  
**2 King Koil TWIN MAPLE BEDS** **6** PC. SET

- 2 TWIN COLONIAL POSTER BEDS  
Beds are hand-rubbed to a warm nutmeg brown maple finish, 39" wide
- 2 FIRM KING KOIL MATTRESSES  
Feature sturdy innerspring units with hundreds of electrically tempered coils. Layers of cotton felt and insulating pads provide lasting sleeping comfort
- 2 MATCHING KING KOIL BOX SPRINGS  
Specially designed to assure maximum support

## \$140

**LORD'S**  
**OUTFITTING COMPANY**

DIAL CA 6-2551  
301 SO. FRONT ST. MARQUETTE