

Strike Begins At Midnight At Cliffs Dow

Union employees of the Cliffs Dow Chemical Co. will go on strike at midnight tonight. The strike decision was announced this morning by Lawrence L. Lancelot, 2306 Fitch Ave., president of Local 1432, United Mine Workers of America.

Wage Increase Difference

It was learned that Cliffs Dow management and union representatives have been negotiating for several weeks without success. The difference primarily stems over a wage increase difference.

Lancelot said the company has offered the union employees a wage increase of two cents an hour, plus an additional one cent per hour in fringe benefits. He said the union originally had demanded 15 cents per hour for a wage boost, but recently had dropped this request to five cents per hour.

Lancelot said there are about 260 members in the Cliffs Dow union. He said the strike vote, taken last Thursday and Friday in the Central Labor Union Hall, S. Front St., went over by about two and one-half to one.

To Picket Plant

The Cliffs Dow union voted in November 1959 to affiliate with the United Mine Workers. Prior to that time, the chemical plant union

Two Weather Marks Broken In December; First Part Mild; Balance Unusually Cold

Two weather records were broken in December in Marquette, with the month starting off in a mild spell that was unprecedented and winding up with an extended cold wave.

Statistics provided by the Marquette office of the U. S. Weather Bureau show the month's mean temperature was 21.7 degrees, which was 2.4 below average.

Even Golfers Were Out

But that's not the whole story. In the first week of December the temperature was well above normal, with the mercury soaring into the 50s four times. In fact, it was so balmy that many persons were golfing at the start of December — and almost unheard of situation for Marquette.

Highest reading was 59 degrees, on the 3rd, which was a new mark for the day. The old record was 54, in 1951.

Another record was the 38-degree reading on the 1st, which was eight degrees higher than the previous mark of 50, set in 1914.

It also was 56 on the 2nd and 50 on the 4th. During those first few days, the mean temperature ranged up to 23 degrees a day above normal.

But, as natives well know, the weather can change rapidly and drastically in Marquette. On the 8th the mercury plunged to 19 degrees, the day's maximum was five degrees below freezing and the mean reading was below average.

From then on the daily mean temperature was generally below normal.

Zero Or Below Five Times

It dropped to zero or below last month five times, with the first subzero reading here being one below on the 11th. The maximum that day was five above and the mean temperature was two.

While that sounds like a ridiculously low mean temperature, the average for the 28th was even lower, two below zero, since the high was only six and the minimum 10 below, the coldest reading here for the month.

It also got to zero Christmas Eve, Christmas Day and on the 27th. From the 18th, which it was 19 degrees, oddly enough, through the end of the month the mercury didn't go above freezing. As a further oddity, the maximum temperature on the 31st was 19.

Hence there was not much of a "leveling off" period in Marquette during the month; it was either exceptionally mild or unusually cold.

Precipitation Above Normal

Precipitation, which includes snow reduced to water, totaled 2.37 inches for December, .65 of an inch more than normal and the most in a decade. The most precipitation previously recorded in December was 2.67 in 1952.

Despite the large amount of

precipitation, however, the snowfall, 23.2 inches, was well below the 33.5-inch fall of December 1961. This was due to the .68 of an inch of rain which came down in the mild spell early in the month.

Biggest snowfall in December for any day was 5.8 inches, on the 10th, but in the storm of the 9th and 10th, a total of 9.5 inches came down.

Very Little Sunshine

Wind direction during December was primarily from the south, southwest, with the highest velocity, 36 miles per hour, being from the southwest on the 28th, intensifying the nine-degree minimum for that day.

Sunshine for the month was below normal. The sun was out only 28 per cent of the daylight hours, or only 75 hours, 52 minutes. Sunshine for December the previous year totaled 35 per cent of the daybreak to dusk periods.

Obituary

MRS. ANNA KLECKER

Mrs. Anna Klecker, 84, Lake Mills, Wis., mother of Mrs. E. J. LaFreniere, 506 W. Magnetic St., died this morning in a hospital in Watertown, Wis. She had been ill two weeks.

Mrs. Klecker, who had visited Marquette frequently, is survived by two daughters, Mrs. LaFreniere, and Mrs. Frank Hillebrand, Lake Mills, and a son, Robert, Waterloo, Wis., and six grandchildren.

Funeral services will be held Saturday morning in St. Francis Xavier Church, Lake Mills.

MRS. NEIL R. ODOM

Funeral services for Mrs. Neil R. (Shirley Rose Hardes) Odom, 34, a former Marquette resident, were held last week in Smyrna, Tenn.

Mrs. Odom, a native of Trout Creek, died following the birth of a son. She was the daughter of Mrs. Norma Hardes and the late Adrian Hardes of Trout Creek.

Prior to moving to Smyrna nine years ago, Mrs. Odom was employed at the Singer Sewing Center in Marquette for six years. She was a member of the First Baptist Church.

Besides her husband, mother and infant son, she is survived by a son, Gary, and a daughter, Peggy; two brothers, George and James, Trout Creek, and a sister, Mrs. Erle (Connie) Mohrman, Marquette.

Yule Tree Burning Event Slated Here Sunday At Armory

A Twelfth Night Christmas tree burning will be held at 7:30 Sunday evening east of Lincoln Ave., just south of the parking lot at the National Guard Armory.

The tree burning is being planned by the Marquette Chamber of Commerce with the cooperation of the city's fire department and the department of public works.

The Twelfth Night bonfire was planned as a safety precaution, according to Theodore Getz, chamber safety chairman.

"Marquette hasn't had a Christmas tree fire in many years, but when trees get dry there is always a danger," Fire Chief John W. Myers said.

Christmas trees will be picked up for the bonfire today and tomorrow by the public works department.

Howard L. Coppens, public works superintendent, asked that residents stand trees up in a snowbank between the curbing and the sidewalk, if possible, or near the front of their homes.

Residents who take their trees down too late for pickup for the bonfire, may take their trees to the armory for the burning themselves.

Plans are to burn a small bonfire of trees for the Twelfth Night celebration and the bulk of the trees will be burned by the fire department Monday.

City Paragraphs

It was inaccurately stated in yesterday's Mining Journal that three 16-year-old skin divers did not make the New Year's Day "splash in Lake Superior" with members of the Hiawatha Skin Divers Club. The three, Kathy Todd, Bob Antcliff and Amos Bell, all went into the lake, with the others. The account should have read that the three are too young for membership in the club, although they work closely with it.

Dog Licenses On Sale; Law Explained

Dog owners are required to obtain a dog license after the first of January each year at the office of their township treasurer or city clerk.

The state law which regulates the licensing of dogs provides that all dogs must be licensed in the county of the owner's residence and that

failure to obtain the license makes the dog available for immediate disposition. Application forms for licenses and dog tags are provided to the cities and townships at county expense. Robert H. DeRoche, Marquette, county controller, said.

Fees Listed

The dog tag shows the county registration number. Dog owners are required to attach the tag to a dog collar.

When a township, city, county or state law enforcement officer picks up a stray dog, animals not wearing the tag may be disposed of.

In order to help the local governmental units with the cost of dog control, the county refunds to each township or city all of the dog license fees collected, DeRoche said.

Cost of the license from Jan. 1 to June 1 is \$1 for a male or spayed female and \$2 for a female. License fees double each year on June 1.

WELL DRILLING
EUGENE M. KORPI
GR 5-4370

Access Road To Sawyer Base From Point On U.S. 41 Near Skandia Under Study By State

An access road extending from the K. I. Sawyer Air Force Base east to U. S. 41 at a point near Skandia is being studied by the State Highway Department.

At present the air base has only one access road — County Road 553.

The proposed road to U. S. 41, covering a distance of about eight miles, would begin at a point on the base near the housing area.

"No decision has been made, but it is expected that this project will be financed with 100 per cent federal funds when Congress approves the route and appropriates money for construction," John C. Mackie, state highway commissioner, told The Mining Journal.

"The State Highway Department will probably handle the project, but funds to do the work will probably come from federal air defense monies."

The State Highway Department is said to have begun making a route and location survey of the proposed road last fall.

First point in the United States to catch the rays of the rising sun is Mount Katahdin, Maine.

Federal Aid Sum Okayed For Chocoley

Immediate payment of \$6,149 has been certified for Chocoley Township School District No. 5, under the provisions of Public Law 874, which makes federal funds available to aid the operation of schools.

Sen. Philip A. Hart (D-Mich.) informed The Mining Journal that the U. S. Department of Health, Education and Welfare had okayed payment of the sum through its office of education.

Thus, for the third consecutive year, Chocoley Township will receive federal monies to help in operating its schools — Silver Creek in Harvey and Beaver Grove.

The district qualified for the aid on the basis of the fact that more than three per cent of its total student population is made up of dependents of personnel employed by the federal government. Most of the children's parents are located at K. I. Sawyer Air Force Base, either in military or civilian capacities.

Ex-Convict's Execution Slated For February 15

DUBUQUE, Iowa (AP) — The execution of an ex-convict from St. Johns, Mich., is scheduled for Feb. 15.

Victor H. Feguer was convicted of the kidnap-murder of Dr. Edward R. Bartels, 34, a Dubuque physician, on July 11, 1960.

Feguer was originally scheduled to hang at the Iowa Penitentiary Jan. 15, but won a 30-day delay in the absence of word from Washington, D.C., on an application for executive clemency.

Auto Insurance Hike Affirmed By Colburn

LANSING (AP) — State Insurance Commissioner Sherwood Colburn has confirmed that a rate increase applied to some customers of the Detroit Automobile Insurance Exchange, an affiliate of the Automobile Club of Michigan, was effective as of the first of the year. The body increase will cover some members of the exchange who carry bodily injury and property damage insurance and a few with collision insurance.

About 40 per cent of the customers will not be affected, Colburn said. The overall increase will average about 6.5 per cent.

NORDIC THEATRE

NOW thru SAT. EVES. 6:30, 9:04



RODGERS & HAMMERSTEIN
present
OKLAHOMA

CINEMASCOPE

GORDON MACRAE
GLORIA GRAHAM
SHIRLEY JONES
CHARLOTTE GREENWOOD
ROD STEIGER

ENJOY ANOTHER FISH FRY FRIDAY . . .

★ Take the family out for dinner at Marquette's Home of Fine Foods . . . The Northwoods.

Serving: Lake Superior Herring, Trout, Whitefish, Salads Included.

Other Fine Seafoods Such As Shrimp, Lobster

Food at its Finest

AT THE
NORTHWOODS

U.S. 41 — 4 MILES WEST OF MARQUETTE



DELFT THEATRE

TONITE ONE NIGHT ONLY

GOLDEN OPERETTA NIGHT!

MEMORABLE SONGS!
GREAT SINGING STARS!



GREAT MUSICAL
IN
CINEMASCOPE
MGM's
ROSE MARIE

Color

ANN BLYTH
HOWARD KEEL
FERNANDO LAMAS

Bert Marjorie LAHR - MAIN

ALSO! SPECIAL!
"THE STRAUSS FANTASY"
"AGELESS ARTISTRY"

Adults \$1.00 Students 85c Children 50c

MONTGOMERY WARD

stop dry air damage, add needed moisture!

here's what a Ward humidifier will do for you...

1. New "bounce" and longer life to your carpets.
2. Plants are protected from "desert dryness."
3. Keeps hair soft, manageable and healthy.
4. Operates instantly. Just plug in, turn switch — no more dry, stale air!
5. Furniture and floors wipe clean easier — dusting is a snap!
6. Fits into any living room, bedroom, den. Goes with any decor.



SAVE \$10 ON WARDS AUTOMATIC 3-4 BEDROOM HOME HUMIDIFIER!

Adds up to 12 gals. of moisture to air daily. Operates automatically only when needed to maintain proper humidity. Humidistat, set at the level you want, turns unit on and off. Washes or filters air. Holds 7 gals. of water. Roll-easy casters. 20x14x19 1/4" deep.

69.95
NO MONEY DOWN

5 DAY . . . FREE HOME DEMONSTRATION WITH NO OBLIGATION TO BUY!

Free Delivery and Pick-Up — If Not Satisfactory
JUST CALL CANal 6-7561 for Delivery!

Many satisfied users of Wards humidifiers will be very happy to tell you what it has done for them.

WE SERVICE What We Sell . . . SATISFACTION GUARANTEED

FRIDAY & SATURDAY

2 GREAT COLOR HITS!
ONCE ONLY AT 7 P.M.

TROY DONAHUE
CONNIE STEVENS
DOROTHY MCGUIRE
LLOYD NOLAN

Susan Stalder

BRIAN AHERNE - GRANT WILLIAMS
NATALIE SCHAFER - NEAT SCOTT - BOMBS BURST

TECHNICOLOR from WARNER BROS.

PLUS CO-FEATURE
ONCE ONLY AT 9 P.M.

They called her "Maggie the Cat!"

Cat on a Hot Tin Roof

ELIZABETH TAYLOR
PAUL NEWMAN
BURL IVES

JACK CARSON - JUDITH ANDERSON

SATURDAY 1:30 P.M. — OUT AT 3:40 P.M.

Kiddy Matinee

DAVID LADD
DONALD CRISP

"A DOG OF FLANDERS"

CHAPTER 13
"KING OF THE CONGO"
and COLOR CARTOON

RAISH OIL CO., INC.

Call today for **Mobil Mobilheat** with **Easy Heat** with **Easy Heating**

CA 6-6513

INTRODUCING THE 1963 DODGE

The low-price field is about the last place a traditionalist would expect to find Dodge. The Dodge name has been associated with the medium-price boys since Hector was a pup. But the fact remains: the '63 Dodge is priced down with good old cars "F" and "C". Now, you can stay with a low price and get a lot more car. The name proves it: Dodge! You get the comfort Dodge is famous for. You get a smooth torsion-bar ride; experts call it best in the business. You get a V8 loaded for bear. (Or, the famous gas-saving 6 with the muscle of conventional V8's.) If that isn't enough to turn the other two green with envy, how's this for a clincher? Every 1963 Dodge is backed by a revolutionary new 5-year/50,000-mile warranty.*

A FULL LINE OF CARS IN THE LOW-PRICE FIELD!

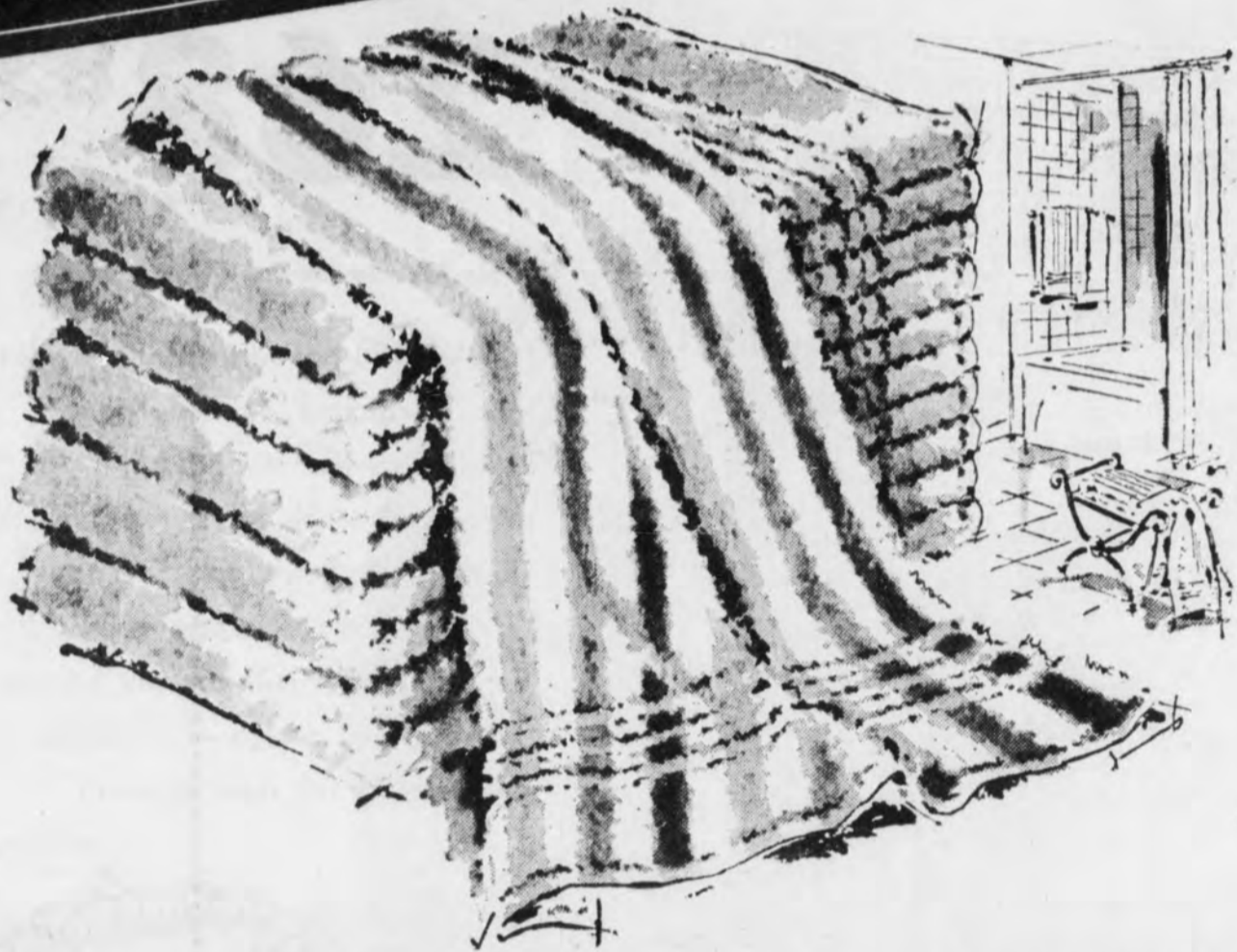
SPECKER MOTOR SALES NAROTZKY MOTORS

722 W. WASHINGTON ST. MARQUETTE, MICH. 330-38 S. MAIN ST. ISHPERING, MICH.

No money down on credit at Wards—just say "Charge It!"



WHITE SALE
Always first quality! Scoop up the savings! Hurry in!



16% OFF! solid 'n' striped towels

ABSORBENT COTTON TERRY

Luxury for your bath, beauty for your bathroom! Rich, thirsty cotton terry towels in refreshing pastel solids and multi-colored stripes. Hand towels, regularly 39c each... 3 for **99c**. Wash cloths, regularly 19c each... 6 for **99c**.

2 for 99c

22x44" long, bath size, reg. 59c each



\$1 OFF EACH PAD FOR TWIN OR FULL SIZE MATTRESS

Twin size pad is regularly 3.98. Double stitch keeps cotton filling from shifting. Bleached white Sanforized cotton cover. 4.98 full-size pad... 3.66

2.66

39x76" TWIN



SPREADS \$2 OFF!

REG. 9.98. REVERSIBLE HEIRLOOM

Early American tradition in a modern fabric—handsome Heirloom design spreads of washable, no-iron cotton; won't shrink. Reverses for longer wear.

7.96

TWIN OR FULL SIZE

WARDS JANUARY FASHION CLEARANCE

BIG SAVINGS ON MISSES AND JUNIOR DRESSES, COATS AND SPORTSWEAR

FALL-WINTER COATS

Fur trim and untrimmed coats, including women's half sizes.

Were 24.98 to 29.98now **19.90**
Were 39.98now **29.90**

BIG DRESS VALUES

Imported and domestic wool and cotton knits; rayon, silk and jerseys.

Were 8.98now **6.50**
Were 17.98now **11.00**
Were 4.98now **4.00**
Were 10.98now **7.00**

SAVE ON SPORTSWEAR

Blouses, dressy, tailored. White, colors. Were 2.98 to 5.98now **2.00 and 3.00**

Skirts. Wool and cottons, assorted colors. Were 3.98 to 7.98now **2.00 and 5.00**

Sweaters. Classic, novelty styles. Were 3.98 to 10.98now **2.00 to 7.00**

BEST SELLER AUTO COATS

Were 12.98now **10.00**

Were 19.98 to 22.98now **16.00**

Were 24.98now **16.00**

LADIES' SWEATERS

REDUCED

SAVE UP TO 50%

Assorted Styles, Colors & Sizes

- BAN LONS
- LAMB'S WOOL
- ORLONS
- ACRYLIC FIBRES
- SLIP OVERS
- CARDIGANS

MEN'S AND BOYS' OUTERWEAR SALE

25% TO 50%

BOYS' ASST. STYLES—SIZES 4-20

MEN'S ASST. STYLES—SIZES 36-46

SAVINGS ON MOST OUTERWEAR IN OUR STORE

LUCKY '10' SHOE SALE ALL DISCONTINUED STYLES REDUCED!

and find your size on our lucky 10 shoe racks and receive an additional

10%
savings



Hurry in! There's a great selection of Fashion Stride, Pinehurst and PowrHouse shoes for every member of the family. Not every size in every style, that's why Wards offers an extra 10% savings for self-service from Wards special Lucky 10 shoe racks. Save time and money—bring your selections to the cashier.

REMNANT SALE

SAVE

20% to 50%

Here's Wards wonderful across-the-counter clearance of first quality fabrics. Everything must go! You'll find a terrific assortment of fibers, textures and colors—mostly one of a kind.

Many are wash and wears that require little or no ironing. Get here lightning-fast if you want the pick of this clearance crop, because these big savings will make Wards remnant counter the center of activity.

SATISFACTION

OR YOUR MONEY BACK

Inmates Here Hike Emphasis On Education

Emphasis on education in the past few years has spread behind prison walls and the Northwoods Academic School at Marquette State Prison has grown by leaps and bounds.

The prison school is a unique one. The students are adults who come from a group in which the average educational level is fifth or sixth grade. Courses range from elementary penmanship to Russian. The teachers are fellow prisoners and many of them have never attended college.

The prison's academic school has grown from six students, seven inmate-teachers and 16 men taking cell study courses in 1960 to 98 men enrolled in the academic school, 17 part-time and five full-time inmate instructors and 137 men taking cell study courses in this January's term.

Formerly Headed By Buchkoe
The education department was left without leadership 10 years ago when the former education director, Raymond J. Buchkoe, was promoted to warden.

Although the vocational and recreational divisions of the education department continued to thrive, the academic school deteriorated with what one prison official called "appalling consistency."

In 1960 Norman E. (Boots) Kukuk was promoted to education director from recreation director, a post he had held at the prison for three years, and the academic school underwent a complete reorganization.

Organized Crash Program

Kukuk, a former public school superintendent in the Lower Peninsula, found his first duty was to organize a program to train inmates to be instructors.

A crash program was provided by educators from area schools and Northern Michigan College. The educators donated more than 40 hours for the accelerated instruction program.

Candidates for inmate-teachers were selected through the help of Claude Lauscher, director of treatment at the prison. Candidates were chosen who were "community leaders" at the prison, had a high standard of educational background and experience in leadership.

Rigorous Training Session

After the rigorous training session the inmate-teachers were able to organize classes and serve as instructors for the 120 prisoners, almost everyone inside the prison wall who didn't have a full-time job, who applied to take courses.

The inmate-teachers, all convicted of "high prestige" crimes such as murder, armed robbery and arson, completed the first term with gratifying success.

"Nevertheless, we felt we had the weak leading the weak and we knew we needed an in-service training program to perpetuate and improve the school," Kukuk said.

A program was set up which utilizes educators in the area as resource people and tapes of the first crash training session to provide in-service courses and training for new teachers.

In December, 11 more inmates graduated from the teacher training class qualified to begin the January term as student-instructors.

They will serve as student-instructors for three months and, if successful, will be eligible to become fullfledged instructors.

Working Man May Need Better Image

ANN ARBOR (AP) — A better-paid worker is not necessarily a happier one, says a University of Michigan researcher.

And labor unions — despite their efforts for better economic conditions — have not done all they could to solve many of the important psychological problems of workers, says Dr. Arnold Tannenbaum, program director of the U-M Survey Research Center.

Although economic improvement has contributed to workers' mental health, Tannenbaum said, "the labor movement has repeatedly expressed aversion for efforts toward developing some of the psychological positives."

"These," he said in a recent report, "are often identified as cow sociology and manipulation techniques for exploiting the worker and undermining the power of the labor movement."

"The ideal image of the working man which the labor movement provides is not that of a man enjoying his work," he added.

"Labor, which is committed to elevating the status of the working man, may be fostering an attitude in the workers which is inconsistent with its position," he said.

Belittled
Industrial jobs, he added, often are belittled although they're important and essential. Industrial work — often hard, dirty and dull — "provides us as a nation with opulence, comfort and the very basis of survival," he said.

"Because many of the men have not had training beyond the high school level, we don't expect the caliber of work of college graduate teachers, but we do expect our teachers to do their best," Kukuk said.

There's rarely a discipline problem in the prison school. Only inmates with high prestige in the prison yard are selected as potential teachers. For the most part, Kukuk said, the students are keenly interested in bettering themselves through education.

The term which began this month was planned to be stricter in subject matter and, in preparation, the 11 new student-instructors completed a rougher than usual training session.

Teaching machines made in the prison carpentry shop will be used on an experimental basis this term.

Subjects Listed

Subjects taught during the 16-week terms range from first grade English to business English and first grade arithmetic to algebra. Courses include typing, biology, all levels of English and arithmetic, political science, Spanish, spelling and penmanship.

New courses being taught this term include science and physics, civics, world history, sociology, anthropology and Russian. The cell study program is coordinated with regular classes and is organized for inmates who wish to learn but hold down daytime prison jobs.

The program is run like a correspondence course — students are given textbooks and workbooks which they return to instructors for correction and special help.

English Most Popular
Most popular cell study course is English, with 29 enrolled. Twenty-seven prisoners are studying elementary arithmetic and 14 are enrolled in algebra.

Other courses offered in the cell study program include Spanish, spelling, history, penmanship, shop mathematics and economics. Since 1960, 43 inmates have qualified for the Northwoods Academic School diploma, which is equivalent to a high school diploma. None of the 48 have failed the final examination, the General Education Development Test made up by the Veterans Testing Center in Washington, D.C.

Eleven more prospective graduates are waiting for final test scores.

One of the inmate instructors says: "Among the saddest adults are those who lack an education because they dropped out of school. They are sad because their world is so small."

"A few years ago there were no seats in the classroom big enough for an adult, but today grownups can open their books again. All it takes is a little honesty, humility and determination and the mistakes of childhood can be erased forever."

AEC To Hear Atom Plant's License Bid

WASHINGTON (AP) — The Power Reactor Development Co. goes before a panel of the Atomic Energy Commission today in quest of a provisional operating license for its controversial \$85 million power reactor near Monroe, Mich.

A three-man atomic safety and licensing board is sitting to hear the request for authority for low power operation of the reactor to one megawatt thermal. The ultimate full power of the reactor is 60,000 electrical kilowatts.

The board, headed by Samuel Jensch, chief hearing officer for the AEC, denied a motion by three unions, the UAW, the IEU, and the Paper Makers, for a postponement of today's hearing.

Accident
The unions cited an accident at the reactor on Dec. 12 while tests were being made on one of the three steam generators which caused a sodium-water reaction. The unions said if nuclear fuel had been in the reactor at the time, there could have been a dangerous reaction.

The PRDC in an answer filed Dec. 27 denied any danger existed as a result of the accident. The company said the incident showed that the reactor performed as it had been designed to do. It said that even if nuclear fuel had been in the reactor at the time, there would have been no release of fissionable material.

21 Corporations
PRDC is composed of 21 corporations including 13 operating utilities, seven industrial companies and one service company. One of the 21 corporations is Detroit Edison Co., which owns the steam generators and would use the electrical energy to be produced.

PRDC is asking for authority to permit loading of nuclear fuel into the reactor for the first time, although at a very low operational level.

In addition to the \$85 million cost of the reactor borne by PRDC, the AEC has agreed to do research and development work on the reactor. It is a fast breeder, sodium type, reactor which differs from the water-cooled type of reactor.

no money down
Take up to 36 months to pay

• **FREE DELIVERY**
• **FREE normal installation**

WARDS NATIONWIDE REPAIR SERVICE is just a phone call away!

LOW PRICES EVERY DAY, and even bigger values when we say "sale!"

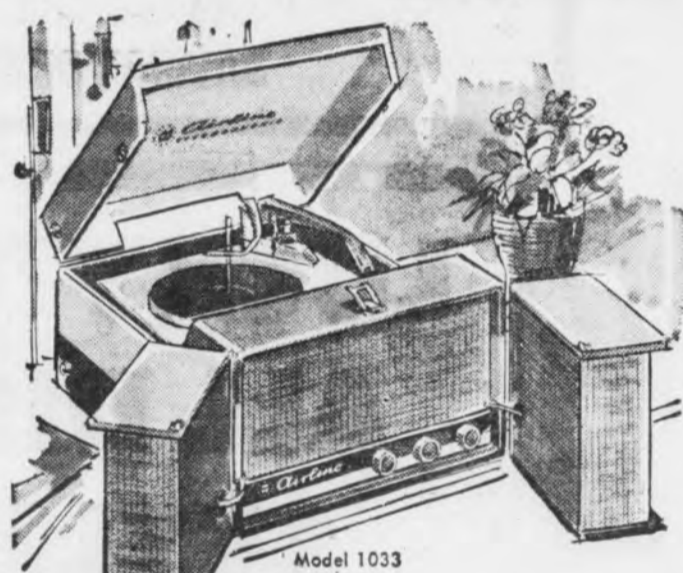
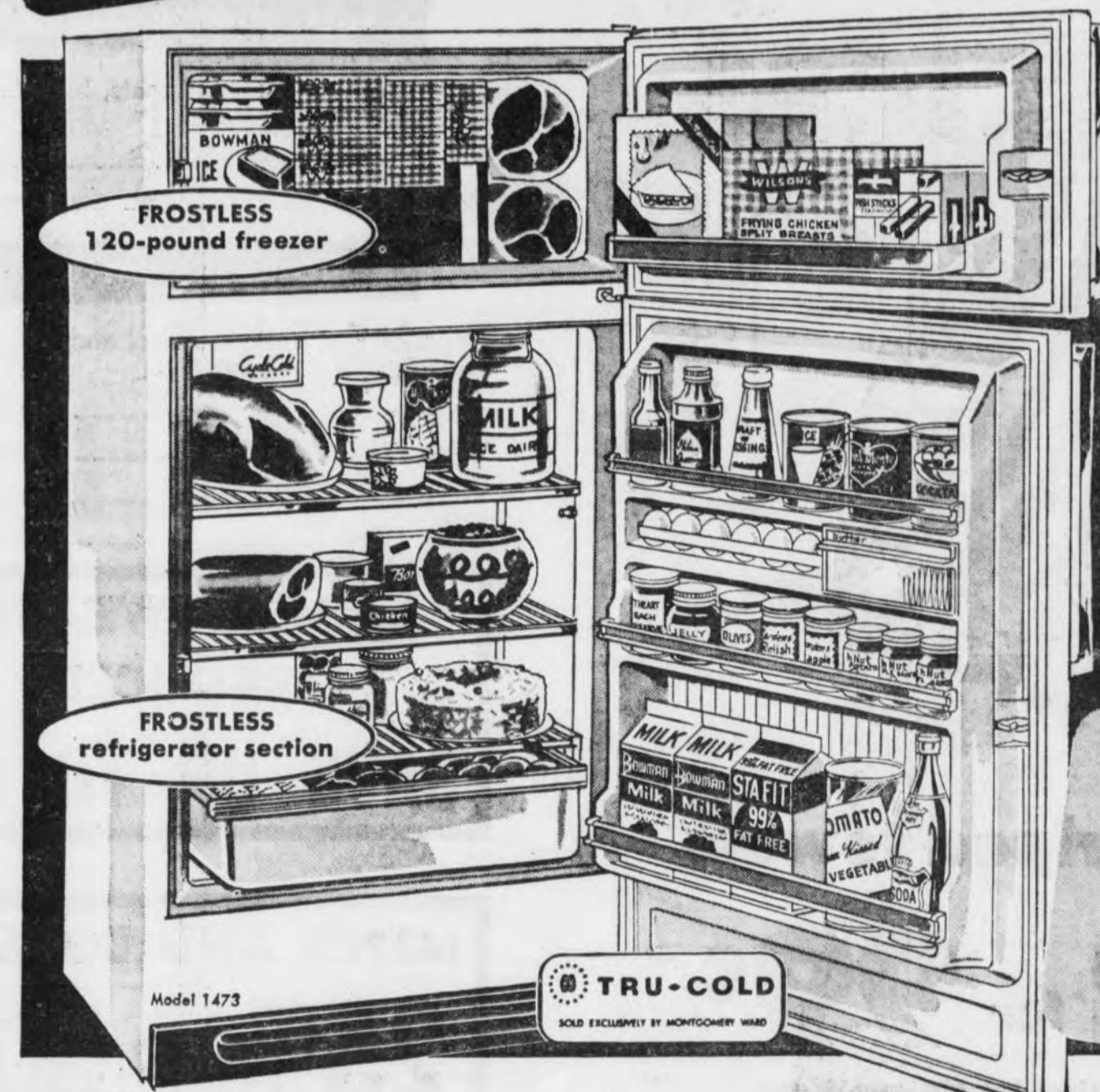


\$41 OFF! FROSTLESS 13.5 cu. ft. two-door TRU-COLD COMBINATION REFRIGERATOR-FREEZER

268⁸³
Reg. 309.90

No Money Down, \$11 a month

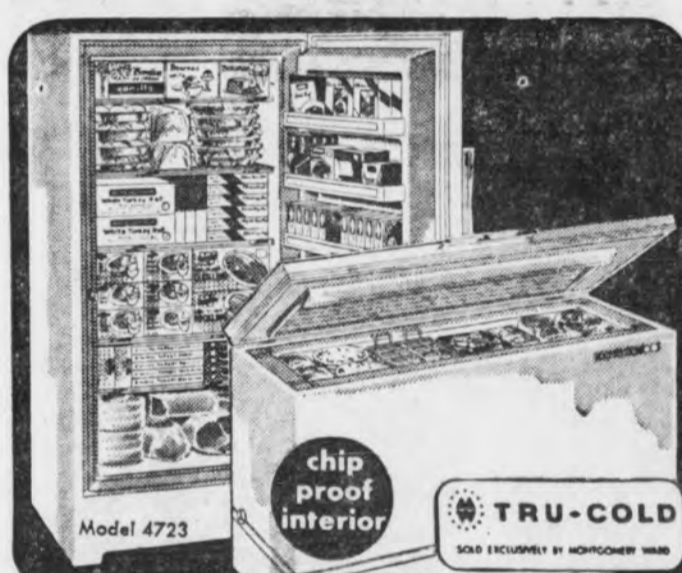
- Frostless 120-pound freezer provides safe "zero-zone" food storage
- Frostless refrigerator has full-width shelves, full-width polystyrene crisper
- Freezer door holds food packages
- Refrigerator door has egg racks, dairy bar, shelves for milk cartons, bottles
- Ultra-modern design — available with right or left door opening



STEREO, \$10 OFF!
3-SPEAKER 4-SPEED PORTABLE!

Side speakers separate up to 24 feet for true stereo sound. Automatic 4-speed changer, separate controls, sapphire needle. Smart black and white case.

64⁸⁸
NO MONEY DOWN!
REG. 74.95



TRU-COLD FREEZER
BIG 17 CU. FT. CHEST AND UPRIGHT!

Very special! Each holds 59.5 lbs. at certified zero° cold! Chest has movable space divider, lift-out basket! Upright has open refrigerated shelves, full door storage!

209⁸³
NO MONEY DOWN



SAVE \$40 NOW!
WARDS 5-CYCLE TWO-SPEED WASHER

2 speeds—normal and slow; 5 cycles for all-fabric care. 3 wash, 2 rinse temperatures. Lint filter, detergent and bleach dispensers, water-level control.

224⁸³
Reg. 264.90
NO MONEY DOWN

USED TRADE-IN APPLIANCE SALE AT LOW-LOW PRICES!!!

ONLY ONE OF A KIND

TV AIRLINE 21", TABLE MODEL	39.95	REFRIGERATOR, GALE	29.95
TV WESTINGHOUSE 21" TABLE MODEL	29.95	REFRIGERATOR, KELVINATOR	29.95
ELECTRIC RANGE, 36"	24.95	REFRIGERATOR, WESTINGHOUSE	49.95
WASHER, SPEED QUEEN	14.95	REFRIGERATOR, KELVINATOR	49.95
REFRIGERATOR, CROSBY	39.95	REFRIGERATOR, HOTPOINT	29.95
FLOOR SAMPLES			
UPRIGHT FREEZER, 17 CU. FT.	271.90	TOP LOADER WASHER, AUTOMATIC	169.95
UPRIGHT FREEZER, 15 CU. FT.	241.90	FRONT LOADER WASHER, AUTOMATIC	119.95
GAS RANGE	139.95		

Police Probe Car Mishap In Marquette

City police this morning were investigating a traffic mishap which occurred in the early morning hours on Wright St., at County Road 550.

Officers, notified by another motorist, discovered an unoccupied automobile, lodged against a sign post at the northeast corner of the intersection, near a store, at 4:35 this morning.

Police said the car, registered in the name of Bert Mauro Jr., Saginaw, apparently had been driven east on Wright St. and went to the left of the roadway, traveling off the north (left) side of the road and smashing into the sign.

The sign and the front end of the vehicle, a 1960 four-door sedan, were damaged.

Dock Blaze Put Out By City Firemen

Marquette's fire department extinguished a blaze at the coal pile owned by the Marquette Dock Co. in the Lower Harbor yesterday afternoon.

Firemen, notified by phone of the blaze, responded with the No. 3 (1,000-gallon) pumper. They said the cause of the fire apparently was due to spontaneous combustion.

Firemen laid 450 feet of two and one-half-inch hose and 200 feet of one and one-half-inch hose to battle the blaze, hooking up the department's deluge gun with two hose lines, to give it more water and bigger force.

Water was pumped by the engine for two hours, as the coal pile was soaked down well. The company's clam shovel removed the coal from the top of the pile and took out the burned portion.

Eight on-duty firemen went to the scene and three off-duty firemen were recalled to the station. Firemen, called out at 2:22 p.m., returned to the station at 5:25 p.m.

Budget Items Featured In Food Stores

DETROIT (AP) — Sandwiches are one answer offered by food stores this weekend to kitchen-weary housewives with holiday-flattened budgets.

A variety of fillings are featured regionally.

Smoked hams are bargain priced in many areas. Ground beef and Maine sardines are economy items almost universally. Cheese is still attractively priced. Eggs are still relatively economical.

Leg of Lamb Low
Leg of lamb, priced at 53 cents a pound in the New York area outlets of a national chain, offers a money-saving way to serve a refreshing change from the traditional holiday season fare.

Produce and fruit counters, meanwhile, show the effect of Florida's mid-December freeze. Tender vegetables generally show higher prices.

Oranges and grapefruit are higher as supplies from California and Texas seek to fill demand. Frozen orange juice concentrate, a bargain for weeks, is climbing in price.

The most attractive vegetable items at most stores include cauliflower, spinach, mushrooms, potatoes, onions, cabbage, beets, celery, squash, carrots, artichokes and broccoli.

Among fruits, apples are the best attraction.

Thief Steals Puppy Free For The Asking

TUCSON, Ariz. (AP) — Humane Society officials are mystified.

Someone broke into their refuge and stole a puppy.

The puppy, like dozens of other animals, was available free to anyone who wanted it.

HEATH HENS

The heath hen was a grouse that was a close relative of the prairie chicken. No heath hens are now alive but they formerly lived on the Atlantic seaboard.

The Mining Journal 166

Published by THE MINING JOURNAL CO., Ltd., daily except Sunday and legal holidays at Marquette, Michigan and especially devoted to Upper Peninsula interests. Second class postage paid at Marquette, Michigan.

MEMBER OF THE ASSOCIATED PRESS. The Associated Press is entitled exclusively to the use for republication of all the local news printed in this newspaper as well as all AP news dispatches.

Member Audit Bureau of Circulations. Mich. Press Ass'n. Int'l Press Ass'n.

Subscription rate BY MAIL. All Zones: \$1.75 per month, \$3.50 two months, \$4.75 three months, \$9.00 six months and \$18.00 yearly. BY CARRIER. All Zones: 45¢ per week, \$1.93 one month, \$3.83 three months, \$11.70 six months, and \$23.40 yearly. Address All Mail Subscriptions, change of address, Form 3529, to: The Mining Journal, 249 Wash. St., Marquette, Mich.

No money down on credit at Wards—just say "Charge It!"



3 DAYS ONLY

JANUARY TIRE & BATTERY Carnival

TIRE PRICES CUT!



Riverside SAFETY NYLON
12.88*
6.70-15 tube-type blackwall
21-MONTH GUARANTEE

- 4-ply, impact-resistant Nylon cord
- 7 rows of skid-resistant tread blocks

Tube Type Blackwall	Sale Price Each	Tubeless Blackwall	Sale Price Each
6.40-15	11.88*	6.40-15	13.88*
6.70-15	12.88*	6.70-15 or 7.50-14	14.88*
7.10-15	15.88*	7.10-15 or 8.00-14	17.88*
7.60-15	18.88*	7.60-15	20.88*
8.00/8.20-15	21.88*	8.00/8.20-15	23.88*

*All prices plus excise tax and your old tire. Whitewalls \$3.00 more.

NYLON S-112
22.88*
7.50-14 tubeless blackwall plus excise tax and trade-in
33-MONTH GUARANTEE

Our finest tire—12% deeper tread for up to 30% more mileage! 5000 gripping edges; 4-ply Nylon.
*Other sizes proportionately priced.

- Riverside 4-SQUARE GUARANTEE**
1. Against road hazards for the specified time. Adjustments prorated on months used.
 2. Against defects in materials, workmanship for life of tread. Adjustments prorated on tread wear.
 3. Nationwide service at all branches.
 4. Satisfaction guaranteed nationwide. Adjustments based on sale price when returned.

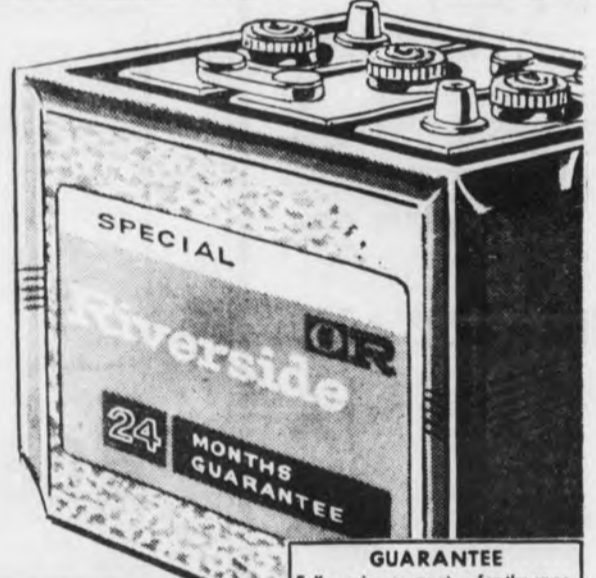
BIG CAPACITY! LOW COST! CHECK RIVERSIDE'S NEW LOW PRICES!

24-MO. GUARANTEE
7.88*
6-volt with trade

"Power-Gard" protects battery from over, under-charging, extends service life. 12-volt, with trade, low as 10.88

30-MO. RIVERSIDE
For cars with heavy electrical demands; more reserve starting power, too. 6-volt with trade 10.88

36-MO. RIVERSIDE
For today's modern cars with bigger electrical systems, power equipment. 12-volt, with trade, low as 15.88

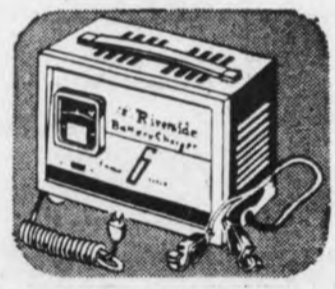


Car Model	24	30	36	Car Model	24	30	36
Chevrolet 40-54	7.88	10.88	15.88	Plymouth 28-35	7.88	10.88	15.88
55-62	10.88	13.88	18.88	Dodge 49-55	7.88	10.88	15.88
Corvair 61-62	13.88	18.88	23.88	Plym. Dodge 56-62	10.88	13.88	18.88
Ford 33-53	7.88	10.88	15.88	Pontiac 49-54	7.88	10.88	15.88
54-55	11.88	14.88	19.88	55-62	10.88	13.88	18.88
Mercury 49-53	7.88	10.88	15.88	Tempest, Olds F-85, Chev II, Falcon	11.88	14.88	19.88
Ford, Merc. 56-62	17.88	20.88	25.88	Rambler 56-62	12.44	15.44	20.44
Volkswagen All	12.44	15.44	20.44				

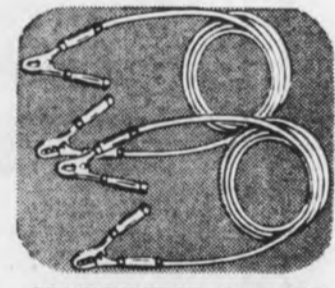
*All prices with trade-in

GUARANTEE
Full service guarantee for the specified time, prorated on the months used. Adjustments based on price before trade-in when returned.

INSTALLED FREE



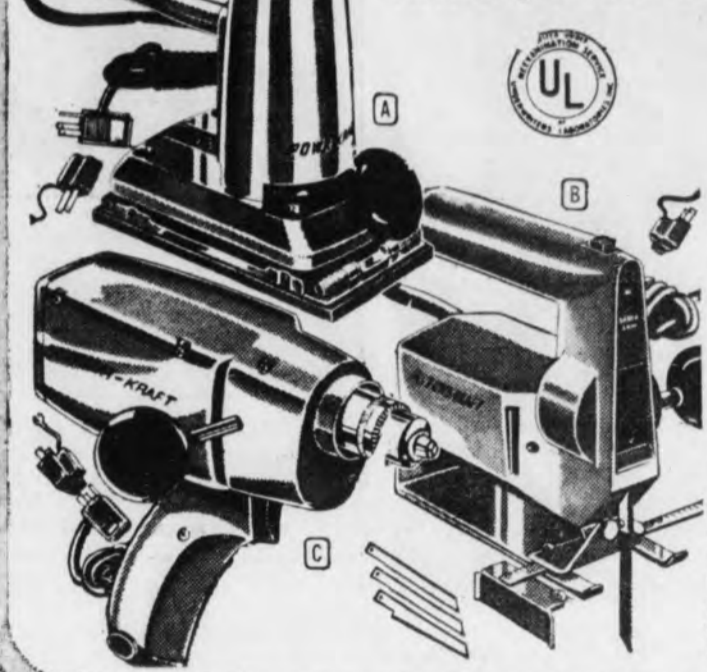
6-AMP. CHARGER
Charges battery completely in 7 to 9 hrs.; tapers to 3 amps. View meter. For 6 and 12V batteries. 16.95



12' BOOSTER CABLES
An emergency "must", particularly for cars with automatic transmissions. Insulated handles. 2.99

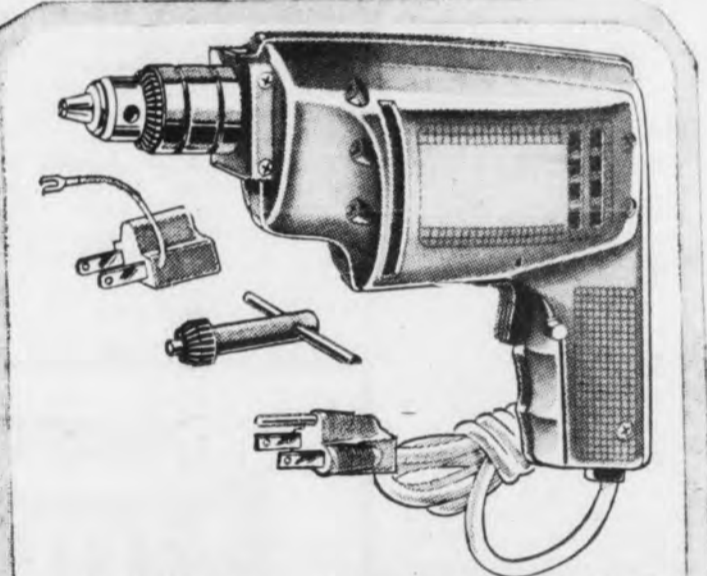
HARDWARE SPECIALS

save from 7.05 to 11.05 ANNIVERSARY PRICED PORTABLES

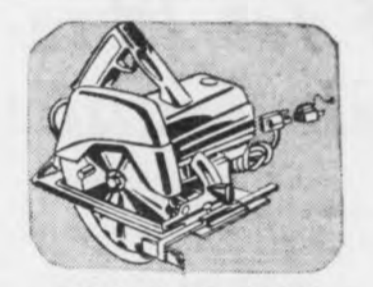


15.90 EACH

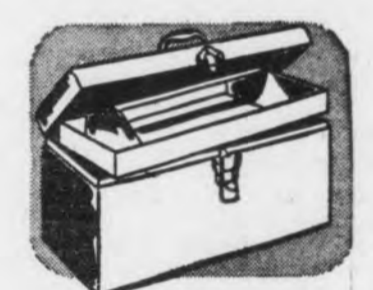
- A ORBITAL SANDER—Reg. 26.95. Stall-free motor delivers 4,000 strokes per minute, 2.2 amps.
- B SABRE SAW—REG. 26.95. Motor develops 1/5 HP, 2.5 amps. Shoe adjusts for angle cuts.
- C 3/8" DRILL. Reg. 28.95. Powerful motor develops 1/3 HP, 3.0 amps. Ball, bronze bearings.



SPECIAL PURCHASE POWR-KRAFT 1/4-INCH PORTABLE DRILL
Ideal for the home handyman or hobbyist! Features include rugged 2.5-amp. (Industry Standards), 2400-rpm motor; polished aluminum finish.
7.99
NO MONEY DOWN



CIRCULAR SAW
Motor develops 1 1/4 HP, 8 amps. (Industry standards).
19.88



2.05 OFF! TOOL BOX
Regularly 7.95. All-steel! Overall size: 20 1/4 x 8 3/4 x 9 1/4".
5.90

SAVE UP TO 50% OFF ON DISCONTINUED PATTERNS on China and Semi Porcelain Dinnerware!

Service For 6 and 8 — 37.53 and 100 Per Sets

1" Heavy Duty Drill
Reversible switch. Operates with full power both directions. Full ball and needle bearings.
REG. 49.95 **NOW 33.88**

CARPENTER'S 9-PIECE TOOL SET
Includes: Hammer, Saw, Plane, Screwdrivers, Pliers — Boxed
REG. 9.98 **NOW 5.00**

6 1/2" Heavy Duty Electric HAND SAW
Develops 1 1/4 M.P. Ball bearing and needle bearings — Safety clutch.
REG. 45.95 **NOW 33.88**

ONE GROUP LIGHT FIXTURES
50% OFF

Repair and Installation SERVICES At WARDS SERVICE CENTER

- Rotate Tires 1.50
- Change Snow Tires & Balance
- Two Tires 3.00
- Four Tires 5.00
- Oil Filter Change . Plus Filter 50c
- Clean Air Filter 50c
- Battery Charged 1.00
- Voltage Regulator Installation 3.00
- Generator Installation . . . 3.00
- Spark Plugs Installed
- Set of Eight 2.50
- Set of Six 1.50
- Re-Pack Front Wheels
- Charge Per Pair 1.50

CHANGE YOUR OIL . . . 10¢ Per Quart, Plus Oil

FREE! WHEEL ALIGNMENT CHECK-UP

TESTED ON PRECISION-ENGINEERED EQUIPMENT

if alignment is needed, we will:

- Caster, Camber, Toe-in, Toe-out
- Re-test wheels

Special 7.50
Ford, Chev., Plym.

USE YOUR WARDS CREDIT FOR ANY OF THESE SERVICES!

remanufactured!

SALE! 51 TYPES CAR — TRUCK ENGINES

139.90*
All Chev. 6, 216-235 cu. in.
Dodge, Plym. '46-59 6 cyl. "L" 159.90** head
'54-61 Ford, Merc. V-8 239, 256, 272, 292. 189.90*

Over 200 new parts . . . 90-day or 4,000 mile guarantee . . . free, 500-mile check-up! Get new-car power at fraction of the cost.
*Exch. less head
**Exch. with head

Riverside Engine Guarantee
If re-manufactured assembly fails because a part of the assembly is defective within 90 days from date of installation or 4,000 miles of use (whichever comes first), the part will be replaced free. Nominal labor charge.



K. A. Wahtera Winner Of 1st Place In City Yule Lighting Event

Mr. and Mrs. K. A. Wahtera, 985 W. College Ave., are the winners of the grand prize, a \$50 savings bond, in the 1962 Christmas residential lighting contest in Marquette.

The Wahteras won the award for their display on their garage. The display, a silhouette, is a Nativity scene, showing the shepherds going toward the manger.

The contest, the 10th annual such event, was sponsored jointly by the City of Marquette and the Kiwanis Club. Chairman of the Kiwanis contest committee was Dr. Walter J. Norris.

Committee of Judges
However, a six-member committee of judges, headed by Mrs. Clair M. Hekhuis, 1013 Allouez Dr., as chairman, was solely responsible for the selections.

Other judges were the Rev. Thomas Coleman, assistant pastor of St. Peter's Cathedral; the Rev. Arnold M. Olson, pastor of the Bethel Baptist Church; Mrs. J. W. Goodney, 919 W. Kaye Ave.; Mrs. R. L. Balconi, 520 E. Ohio St., and Mrs. Walter Topin, 116 Fisher St.

As in the past, the judges based their decisions in large part how well each exhibit reflected the true Christmas spirit — the religious theme. Creative effort required to complete each display also was given much weight by the judges. Another requirement was that the displays must be lighted in some way each evening during the holiday season.

Only homeowners residing within the city limits were eligible for the contest, in which prizes totaling well over \$250 are being distributed.

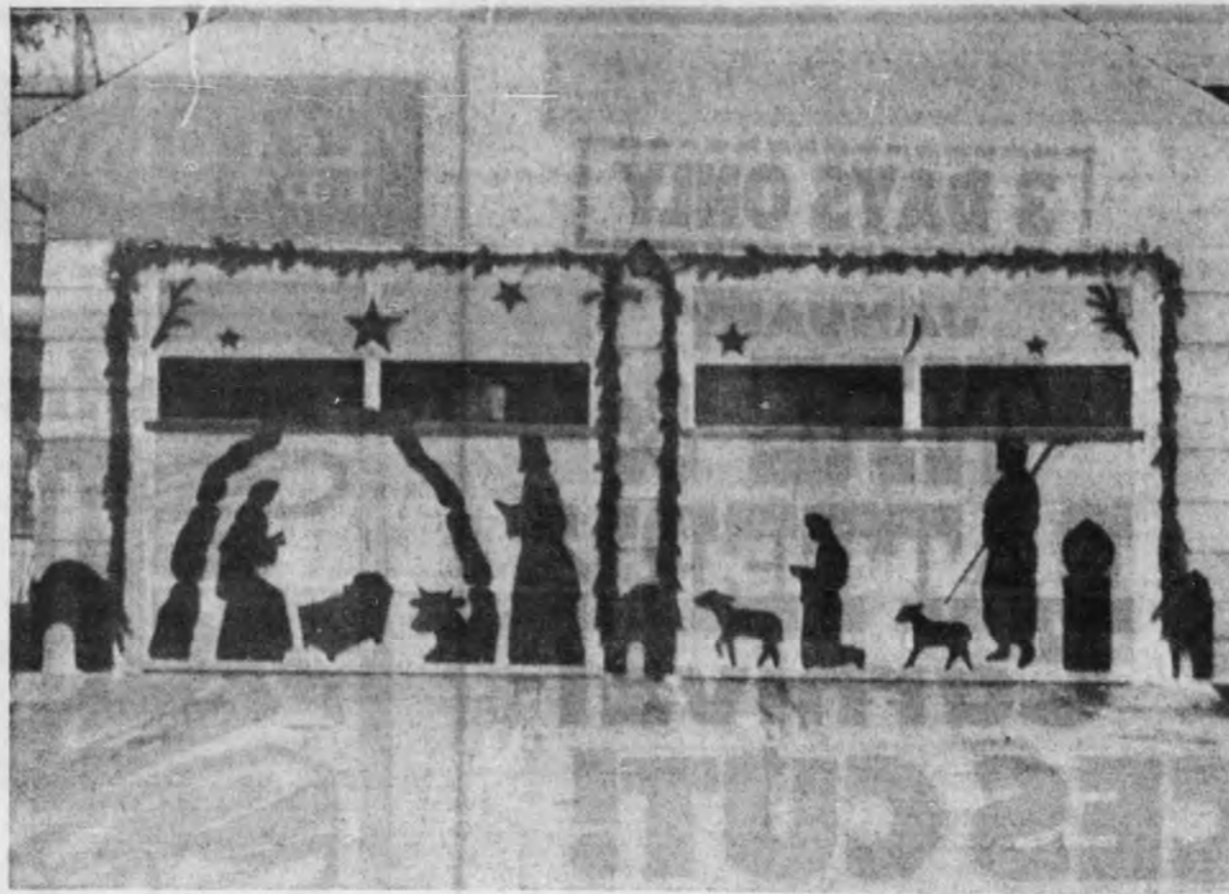
In the contest, the city was divided into five districts, the north (homes north of Kaye Ave., including the north side of Kaye), the east (north of Washington St., south of Kaye and east of N. Third), the west (north of Washington, south of Kaye and west of N. Third), the south (south of Washington, except for Shiras and Lakeview Heights Subdivisions), and the Shiras-Lakeview areas.

Sectional Prize Winners
The grand prize winner was selected from the city-at-large. A first prize (a \$25 savings bond) was awarded in each district, as well as several \$5 cash awards and some honorable mentions. Contest rules also stipulate a resident may not be eligible for the same award within a five-year period. However, a different prize can be awarded to a previous winner during this period or the same category award after five years.

Sectional winners (of a \$25 savings bond) this season were: Henry G. Mercure, 441 E. Prospect St., east district; Joseph E. Kueber, 701 W. Marguerite St., west district; James Jannausch, County Road 550, North district; Elmer Dagenais, Wilson St., south district, and J. Oakes O'Neill, 110 Raymond Dr., Shiras - Lakeview Heights Subdivisions.

Winners of the grand award in past years were as follows: Daniel J. Vaughan, 711 N. Fourth St., 1953; Richard C. Hammschmidt, 728 W. College Ave., 1954; Henry G. Mercure, 441 E. Prospect St., 1955; Dr. W. D. Salo, 427 E. Michigan St., 1956; Bernard J. Hogan, 403 Genesee St., 1957; Alf Carlson, 1213 Lincoln Ave., 1958; Murrell W. Clark, 1110 N. Seventh St., 1959; James Blekkola, 410 E. Ridge St., 1960; and Henry G. Mercure, 441 E. Prospect St., 1961. (He was eligible to win for a second time, since more than five years had elapsed since he was named top prize winner in 1955.)

This year, as in the past few years, special prizes were made available by Earl H. Closser of the Shiras Hills Development Co. for best displays in the Shiras-Lakeview Heights Subdivisions. Those prizes were awarded in addition to the ones by Kiwanis and the City of Marquette.



Dr. Walter J. Norris (right), chairman of the Kiwanis Club and City of Marquette holiday lighting contest, (in photo at left) presents a \$50 savings bond to Mr. and Mrs. K. A. Wahtera, 985 W. College Ave., whose display was adjudged as being the

best holiday display in Marquette this season. Above is the Wahtera exhibit, a silhouette of the Nativity scene, showing the shepherds going toward the manger. It was affixed onto the Wahtera garage. — (Mining Journal photos.)

set, R-Jackson, and Rollo Conlin, R-Tipton.
A similar conference with key Democratic legislators will be held in the next few days, Romney said.

The Governor said there was general agreement between himself and lawmakers with whom he talked that tax reform should be attempted in the 1963 session, but also that "more groundwork must be undertaken before specific tax measures are drawn up."

No other decisions have been made, he added. "We just want to make sure we are familiar with all things to be considered in our legislative program."
Romney outlined the four basic parts of his fiscal program which

are being given "early emphasis" as the 1963-64 budget, economic growth, effective use of available

revenues and "miscellaneous legislation in areas where we need it."

OPEN for BUSINESS!
JACK PURPLE
CA 5-0041 — MARQUETTE
HIGHEST PRICES for SCRAP METALS
HAPPY NEW YEAR
TO EACH AND EVERYONE, ALL OVER THE WORLD!

Following are the sectional cash (\$5 each) and honorable mention awards:

North District — Mrs. Clarence Provost, 1624 Longyear Ave.; J. Ewald Sommers, 411 Center St.; Marold N. Herlich, 1521 Norway Ave.; J. A. LeBeauf, 1827 Wilkinson Ave., and T. P. Ozanich, 1519 Lincoln Ave., all cash awards.

East District — Craig Angerson, 420 E. Michigan St.; Joseph F. Drobny, 309 Albert St.; Kenneth Case Jr., 453 E. Hewitt Ave.; Robert B. Brebner, 425 E. Michigan St., and Raymond Clements, 454 E. Hewitt Ave., all cash awards.

West District — Loreo Parent, W. Washington St.; Howard Houlmont, 408 W. Ohio St.; John D. Barry, 911 W. Magnetic St.; Robert J. Luke, 703 W. College Ave., and Henry Gudegast, 805 W. College Ave., all cash awards, and the Rev. John Hamel, 912 Bluff St.; John Veith, 736 W. College Ave.; Jerome Bates, 930 Lee St., Francis Thill, 524 Harrison St., honorable mention.

South District — Vincent Piasceki, 355 Blenhuber Ave.; B. L. Hogan, 403 Genesee St.; William Solka, Grove St., and Elias A. Aho, 336 Jackson St., all cash awards.

Shiras District — L. O. Melby, 218 W. Nicolet Blvd.; H. F. Chubb, Raddon Dr.; F. C. Donkers, 114 Raymond Dr.; Leslie Dionne, E. Nicolet Blvd., and John D. McKichan, Schoolcraft Rd., all cash awards.

The Closser awards follow: J. Oakes O'Neill, first prize; L. O. Melby, second prize, and H. F. Chubb, third prize.

Romney Set To Tap Fiscal 'Task Force'

DETROIT (AP) — Gov. Romney today appeared ready to fulfill a campaign promise by naming a special "task force" of accountants to conduct a study of Michigan's fiscal affairs — with emphasis on spending of the tax dollar.

There were indications the new Governor would select L. William Seidman, Grand Rapids accountant and unsuccessful Republican candidate for auditor general, to head the "task force."

Seidman currently is serving as a special consultant on financial matters, without pay, in the Romney administration.
The new Governor, beginning his second full day in office, was to hold a special news conference in Detroit before making a luncheon address at the Metropolitan Conference on Open Occupancy.

RESOLVED:
MORE FINE FOOD
... MORE FOOD SAVINGS!

- RIB END
- PORK LOIN ROAST** 2-3 Lbs. Lb. **39c**
- Loin End—3-4 Lbs. Lb. **49c**
- PORK LOIN ROAST** Lb. **49c**
- IGA
- SLICED BACON** Lb. **49c**
- Freshly Ground
- GROUND BEEF** ... 2 Lbs. **89c**
- Fresh—5-6 Lbs.
- ROASTING CHICKEN** Lb. **55c**
- IGA—Six Varieties
- LUNCHEON MEATS** 3 Pkgs. **89c**
- Center Cut
- PORK CHOPS** Lb. **69c**
- Small—Under Three Pounds
- SPARE RIBS** Lb. **49c**

Jones Sausage Links — Meat—Liver Sausage—Hickory Smoked Bacon

- Walleys
- PIKE FILLETS** Lb. **79c**
- FRESH BONELESS
- LAKE TROUT and HERRING**
- FRESH MEDIUM & LARGE OYSTERS
- FINNAN HADDIE
- LOBSTER TAILS—SHRIMP**
- FRESH FROZEN
- Turkey, Chicken, Beef, Salisbury
- BANQUET DINNERS** ... **35c**
- Vahlsing
- FRENCH FRIES** ... 9 Oz. Pkg. **10c**
- Green Giant
- CORN in BUTTER** ... Pkg. **33c**
- Green Giant
- PEAS in BUTTER** ... Pkg. **33c**
- Green Giant
- BRUSSEL SPROUTS** ... Pkg. **39c**
- Budget
- ICE CREAM** ... 1 Gal. **59c**
- Cloverbloom
- BUTTER** Lb. **65c**

- Snider's
- CATSUP** ... 2 20 Oz. **39c**
- JELL-O** ... 3 3 Oz. **25c**
- Wilderness Blueberry or Strawberry
- PIE MIX** ... 3 16 Oz. **\$1.00**
- Summer Isle Half Slices
- PINEAPPLE** 4 16 Oz. Cans **\$1.00**
- IGA Cream Style or Whole Kernel
- GORN** ... 7 16 Oz. **88c**
- Jeno
- PIZZA With CHEESE** Pkg. **49c**
- Page
- TISSUE** ... 4 Rolls **29c**
- Ludington
- APPLE SAUCE** ... 2 16 Oz. **27c**
- Holsum Strawberry
- PRESERVES** ... 2 Lb. Jar **59c**
- IGA Tomato
- JUICE** ... 4 46 Oz. Cans **\$1.00**
- Jif
- PEANUT BUTTER** ... 12 Oz. Jar **43c**
- Carnation
- TUNA** ... 3 6 1/2 Oz. **\$1.00**
- LaChop Chop Suey
- VEGETABLES** ... **29c**

- Fresh
- CARROTS** ... 2 1 Lb. Bags **29c**
- Michigan No. 1
- POTATOES** ... 10 Lbs. **39c**
- Michigan No. 1 McIntosh
- APPLES** ... 4 Lb. Bag **39c**
- Michigan No. 1
- NORTHERN SPYS** ... 2 Lbs. **29c**
- Florida
- ORANGES** ... Doz. **35c**

LaBonte's FOOD STORE
CA 6-2581
YOUR IGA STORE AT 800 N. 3RD ST. MARQUETTE

DELIVERIES THIS WEEK
Tues., Thurs. and Fri. at 4:00 P.M.
Saturday 10 A.M. & 3 P.M.
Place Orders Before Noon for P.M. Delivery.

The Extra Cash You Save Proves It: When You Shop A&P Your **"MONEY TO THE GOOD"**

A&P Boneless Rump, Sirloin Tip or Rotisserie
Beef Roast Lb. **89c**

Ground Round For Sandwiches Lb. **89c**
Lamb Chops Super-Right Blade Cut Shoulder Lb. **49c**
Chuck Roast Blade Cut Lb. **49c**

Redeem These Coupons for 550 Extra Stamps

AP VALUABLE COUPON WORTH 75 EXTRA PLAID STAMPS
With the Purchase of Super-Right Smokies 12-Oz. Pkg. **65c**
Coupon Expires Jan. 5, 1963 Upper Peninsula Stores Only

AP VALUABLE COUPON WORTH 75 EXTRA PLAID STAMPS
With the Purchase of Super-Right Sliced Bologna 1-Lb. Pkg. **65c**
Coupon Expires Jan. 5, 1963 Upper Peninsula Stores Only

AP VALUABLE COUPON WORTH 50 EXTRA PLAID STAMPS
With the Purchase of Jelly or Lemon Rolls Ea. **45c**
Coupon Expires Jan. 5, 1963 Upper Peninsula Stores Only

AP VALUABLE COUPON WORTH 50 EXTRA PLAID STAMPS
With the Purchase of Iced Crunch Buns Pkg. **43c**
Coupon Expires Jan. 5, 1963 Upper Peninsula Stores Only

AP VALUABLE COUPON WORTH 50 EXTRA PLAID STAMPS
With the Purchase of Our Own Black Tea 1/2 Lb. **65c**
Coupon Expires Jan. 5, 1963 Upper Peninsula Stores Only

AP VALUABLE COUPON WORTH 50 EXTRA PLAID STAMPS
With the Purchase of Ann Page Elbow Macaroni 3-Pkg. **63c**
Coupon Expires Jan. 5, 1963 Upper Peninsula Stores Only

AP VALUABLE COUPON WORTH 50 EXTRA PLAID STAMPS
With the Purchase of A&P Instant 10-Oz. Coffee Jar **1.09**
Coupon Expires Jan. 5, 1963 Upper Peninsula Stores Only

AP VALUABLE COUPON WORTH 50 EXTRA PLAID STAMPS
With the Purchase of Crest Tooth Paste 6 1/2-Oz. Tube **83c**
Coupon Expires Jan. 5, 1963 Upper Peninsula Stores Only

AP VALUABLE COUPON WORTH 50 EXTRA PLAID STAMPS
With the Purchase of Listerine Mouth Wash 14-Oz. Btl. **89c**
Coupon Expires Jan. 5, 1963 Upper Peninsula Stores Only

AP VALUABLE COUPON WORTH 50 EXTRA PLAID STAMPS
With the Purchase of Any Variety Bag Apples 4-Bag **49c**
Coupon Expires Jan. 5, 1963 Upper Peninsula Stores Only

Special Sale
One-A-Day Vitamins Or Chocks **60** In Btl. **\$1.23**

Beef Stew B & M Food 20-Oz. Can **59c**
Cake Mixes Ann Page White or Spice 20-Oz. Pkg. **29c**
Daisy Saltines Mildly Salted 1-Lb. Box **21c**
Ice Milk Vanilla or Chocolate 1/2 Gal. **49c**
Cheese Spread Ched-O-Bit 2 Lbs. **69c**

AP Super Markets THE GREAT ATLANTIC & PACIFIC TEA COMPANY, INC.
AMERICA'S DEPENDABLE FOOD MERCHANT SINCE 1859
MARQUETTE — NEGAUNEE — ISHPERING

Aqua—Bath Size Dial Soap 2 Bars **39c**
dexo Shortening 3 -Lb. Can **69c**
Prices Good Thru Jan. 5

PEARCE'S ANNUAL JANUARY CLEARANCE

BIG STOREWIDE SALE STARTS FRIDAY, JANUARY 4TH, 9 A.M.

SAVE 10%, 20%, 40% & MORE—ENTIRE STOCK REDUCED!

FLOOR SAMPLES — DISCOUNTED STYLES — SOME SOILED & DAMAGED PIECES — ONE OF A KIND ITEMS — ALSO MANY NEW PIECES WHICH ARRIVED TOO LATE FOR CHRISTMAS SELLING — ALL AT BIG — BIG SAVINGS

LISTED IN THIS AD ARE ONLY A SMALL PORTION OF THE HUNDREDS OF ITEMS NOW ON SALE AT PEARCE'S

MODERN TABLE LAMPS
Reg. \$12.95 Values
\$6.88 Ea.
34 1/2" tall — ceramic & walnut bases — turquoise or coral trim — beige shades — 3-way switches.

DANISH WALNUT TABLE LAMPS
Reg. \$19.95 Values
\$12.88 Ea.
Danish walnut—wood bases — 34" overall height — with beige shades — brown trim — choice of styles.

MODERN SWIVEL ROCKERS
Reg. \$39.95
\$29.88
Modern rockers in choice of fabrics & colors — walnut finished wood trim.

DANISH MODERN SWIVEL ROCKERS
Reg. \$39.95
\$29.88
Danish styled rockers — with walnut finished wood arms — choice of upholstery fabrics — colors.

COLONIAL SWIVEL ROCKERS
Values To \$49.95
\$34.88
Maple finished wood arms — choice of tweed fabrics & colors.

DANISH WALNUT SURFBOARD Cocktail TABLES
Reg. \$29.95
\$19.88
17 1/2 x 48" size — genuine Formica tops — Danish walnut finish.

DANISH WALNUT STEP TABLES
Reg. \$29.95
\$19.88
With Danish walnut finish & genuine Formica tops.

DANISH WALNUT STUDENT DESKS
Reg. \$29.95
\$19.88
18" x 36" — with one drawer & bookshelf — genuine Formica tops — Danish walnut finish.

LIVING ROOM SUITES

Reg. 360.00—Mastercraft with Lifetime Guaranteed Construction — Foam Rubber & Nylon Brown
2-PC. LIVING ROOM SUITE \$269

Reg. 249.00—International — Nylon & Foam — Choice Turquoise or Brown
2-PC. LIVING ROOM SUITE \$199

Reg. 269.00—International — Foam Cushion — Green Frieze
2-PC. LIVING ROOM SUITE \$199

Reg. 269.95—International — Foam Cushions — Brown or Toast Nylon
2-PC. LIVING ROOM SUITE \$219

Reg. 309.00—Mastercraft—Lifetime Guaranteed Construction — Beige Nylon — Foam Rubber Cushions
2-PC. LIVING ROOM SUITE \$239

Reg. 409.00—Mastercraft — Lifetime Guaranteed Construction — Brown & Beige Nylon — Foam Rubber
2-PC. LIVING ROOM SUITE \$319

Reg. 339.00—Mastercraft — Lifetime Guaranteed Construction — Foam Rubber — Golden Beige Nylon
2-PC. LIVING ROOM SUITE \$265

Reg. 229.00—Mastercraft Brown Nylon Foam Cushions
2-PC. LIVING ROOM SUITE \$179

Reg. 399.00—High Arm Tuxedo Styling with Bolsters — Foam Cushions — Brown Matelasse Upholstery
SOFA, CUSTOM BUILT \$279

Reg. 399.95—Grand Rapids Upholstery — Foam Cushions — Toast Nylon Matelasse Upholstery
SOFA, PROVINCIAL \$279

CHAIRS

Reg. 129.95—Brown & Beige — Custom Built — Hi Back — Foam Cushions
SWIVEL ROCKER \$99

Reg. 129.95—Beige—Custom Built—Hi Back
RECLINER SWIVEL ROCKER \$99

Reg. 119.00—Brown & Beige Tapestry Upholstery — Foam Cushions
FIRESIDE CHAIR, PROVINCIAL \$99

Reg. 189.00—Choice Styles & Colors — Foam Rubber
LOUNGE CHAIRS, KARPEN \$129

Reg. 229.00—Top Grain Leather Upholstery—Tan—Foam Rubber Cushion
LOUNGE CHAIRS, KARPEN \$179

Reg. 139.00—Gold Nylon — Foam Rubber — Lifetime Guaranteed Construction
SWIVEL ROCKER, MASTERCRAFT . . \$109

Reg. 119.00—Beige & Brown — Nylon & Plastic — Foam Rubber —Lifetime Guaranteed Construction
SWIVEL ROCKER, MASTERCRAFT . \$89

Reg. 129.95—Beige & Brown Matelasse upholstery—Foam Rubber — Seat, Backs & Arms
FIRESIDE CHAIRS \$99

Reg. 22.95—Plastic — Beige — Foam Cushion
OCCASIONAL CHAIRS \$18

Reg. 104.00—Nylon & Foam Rubber — Lifetime Guaranteed Construction — Coral or Turquoise
SWIVEL ROCKERS, MODERN \$79

TV-HI-FI & APPLIANCES

Reg. 229.95—Mahogany Console Model — 4-Speed Record Changer
HI-FI, WESTINGHOUSE \$169

Reg. 299.95—Mahogany — Westinghouse — 23" Screen
TV, CONSOLE MODEL \$229 W/TRADE

Reg. 329.95—Mahogany — With Swivel Base — 23" Screen — Philco
TV, CONSOLE MODEL \$249 W/TRADE

Reg. 59.95—Hoover Constellation — Complete with Attachments
VACUUM CLEANERS \$39.88

Reg. 249.95—Westinghouse — With Automatic Oven
30" ELECTRIC RANGE \$179 W/TRADE

Reg. \$339.95—Westinghouse — With 85 Lb. Freezer —
13 CU. FT. REFRIGERATOR . \$199 W/TRADE

Deluxe Model — 1 Only — Floor Sample
Reg. \$249.95—Westinghouse Laundromat — Floor Sample
AUTOMATIC WASHER \$169 W/TRADE

Reg. \$369.95—4 Burner Top — Automatic Chrome Oven
40" ELECTRIC RANGE \$199 W/TRADE

Mattresses & Box Springs
VALUES TO \$59.95
\$29⁸⁸
One group of mattresses & box springs — full & twin sizes — some slightly soiled — some damaged — some discontinued, all high quality.

ETHAN ALLEN MAPLE

Reg. \$119—1 Only — Floor Sample — Nutmeg Finish
CHEST, 7 DRAWER, SOLID MAPLE . . \$89

Reg. \$209—Ten Drawer — Fitted — 1 Only — Floor Sample — Solid Maple — Nutmeg Finish
TRIPLE DRESSER BASE, 62" \$159

Reg. \$145—Solid Maple — 1 Only — Floor Sample —
CHEST ON CHEST, 7 DRAWER . . . \$109 Nutmeg Finish

Reg. 165—54" — Solid Maple — Slightly Damaged —
DOUBLE DRESSER, 11 DRAWER . \$129 Nutmeg Finish

Reg. \$84—Cedar Lined Drawer — Nutmeg Finish
LOW CHEST, SOLID MAPLE \$69

Reg. \$209—Solid Maple Frame — Reversible Seat & Back
2-PC. SECTIONAL SOFA \$169 Cushions — Brown & Gold — Plaid Upholstery — Discontinued Style

Reg. \$299—With Reversible Foam Cushions — Beige Tweed
SOFA, COLONIAL \$249 Upholstery — Discontinued Frame — 1 Only

Reg. \$75—1 Only — Discontinued Style — Floor Sample —
ROCKER, SOLID MAPLE FRAME . . \$55 Reversible Seat & Back Cushions — Gold

Reg. \$85—Solid Maple Frame — 1 Only — Gold Tweed
LOUNGE CHAIR \$65 Foam Seat & Back Cushions

MISCELLANEOUS

Reg. \$89.95—4 Drawer — Plastic Top
CHEST, FAWN MAHOGANY \$49

Reg. \$79.95—Ideal for Blanket Storage — 2 Doors with
CEDAR CHEST, UPRIGHT STYLE . . \$39 Shelf — Lined Oak

Reg. \$89.95—Fawn Mahogany — 2 Door with Shelf
CEDAR CHEST, UPRIGHT STYLE . . \$45

Reg. \$69.95—Gray Mahogany — 2 Doors with Shelf
CEDAR CHEST, UPRIGHT STYLE . . \$35

Reg. \$89.95—Brown Upholstery
DIVAN, WITH BOLSTER BACK \$49

Reg. \$39.95—Lined Oak — Plastic Top
NITE TABLE, WITH 3 DRAWERS . . \$19

Reg. \$39.95
NITE TABLE, WALNUT, MODERN . . \$24

Reg. \$39.95—Upholstered Seat
GOSSIP BENCH, LIMED OAK \$24

Reg. \$89.95—Modern — Cedar Lined — 1 Only — Slightly Damaged
WARDROBE, WALNUT FINISH . . . \$59

BEDROOM FURNITURE

Reg. 219.95—Modern Walnut — Dustproof Construction — Stain & Burn Resistant Tops — Bookcase Bed — Chest — Double Dresser & Mirror
3-PC. BEDROOM SUITE \$169

Reg. 219.95—Lined Oak — Dustproof Construction — Stain & Burn Resistant Tops — Bookcase Bed — Chest — Double Dresser & Mirror
3-PC. BEDROOM SUITE \$169

Reg. 229.95—Danish Walnut — Dustproof Const. — Stain & Burn Resistant Tops — Triple Dresser & Mirror — Chest — Bookcase Bed
3-PC. BEDROOM SUITE \$189

Reg. 219.95—Casual Walnut — Dustproof Construction — Stain & Burn Proof Tops — Double Dresser & Mirror — Chest & Panel Bed
3-PC. BEDROOM SUITE \$179

Reg. 299.00—Candlelight Finish — Dustproof Construction — Stain & Burn Proof Tops — Mr. & Mrs. Dresser & Mirror — Chest — Bookcase Bed
3-PC. BEDROOM SUITE \$169

Reg. 289.95—Italian Provincial— Van Dyke Brown Finish — Double Dresser & Mirror — Chest & Panel Bed
3-PC. BEDROOM SUITE \$249

Reg. 299.95—Italian Provincial— Antique White — Double Dresser — Mirror — Chest & Chair Back, Bed
3-PC. BEDROOM SUITE \$249

Reg. 429.95—Drexel — Contemporary Styling — Pecan & Walnut — Double Dresser — Chest & Panel Bed
3-PC. BEDROOM SUITE \$349

Reg. 49.95
CHESTS, 4-DRAWER, WALNUT \$39

KITCHEN & DINING ROOM

Reg. 129.95—Big Family Size Table — 36 x 48 x 72" — With Champagne Walnut Plastic Top — 6 Beige Plastic Upholstered Chairs — Bronzette
7-PC. DINETTE SET; LLOYD \$99

Reg. 129.95—Big Family Size Table — 36 x 48 x 72" — White Flitter Plastic Top — 6 Upholstered Chairs To Match — Chrome
7-PC. DINETTE SET; LLOYD \$99

Reg. 79.95—Chrome—30 x 40 x 48" Table With White Nocturne Plastic Top—4 Upholstered Chairs
5-PC. DINETTE SET, LLOYD \$59

Reg. 79.95—Bronzette 30 x 40 x 48" Table — With Beige Nocturne Plastic Top — 4 Upholstered Chairs
5-PC. DINETTE SET, LLOYD \$59

Reg. 469.95—Danish Walnut — Big Hutch Cabinet With Sliding Glass Doors—Drop Leaf Table—6 Chairs
8-PC. DINING ROOM SET \$329

Reg. 15.95—Plastic Tops — Bronze Frame — Big Casters — Choice Colors
BUFFETT SERVING CARTS \$9.88

Reg. 189.95—Mahogany with Sliding Glass Doors — 1 Drawer Cupboard Base — With Shelf — 42" Wide
HUTCH CABINET \$149

Reg. 149.50—Mahogany — 48" — With 2 Drawers — Shelf — 1 Only
BUFFET \$119

BEDS & BEDDING

Reg. 79.95—With Plastic Headboard — Innerspring Mattress — Box Spring — Steel Bed Frame — Twin Size
SEALY HOLLYWOOD BEDS \$59.88

Reg. 89.95—With Plastic Headboard — Innerspring Mattress — Box Spring — Steel Bed Frame — Twin Size
SEALY HOLLYWOOD BEDS \$69.88

Reg. 89.95—With Brass Headboard — Innerspring Mattress — Box Spring — Steel Bed Frame — Twin Size
SEALY HOLLYWOOD BEDS \$69.88

Reg. 99.00—Sealy Innerspring — Full Size
MATTRESS & BOX SPRING SETS . . \$69.88

Reg. 279.00—With Posturepedic Mattress—Super Soft Supported Back Plastic Upholstery — Two Foam Cushions
SEALY SLEEP SOFA \$239

Reg. 219.00—Includes — Sofa Bed — Platform Rocker — Occasional Chairs — Modern Lined Oak — Green Upholstery
3-PC. SOFA BED GROUP \$159

Reg. 219.00—Colonial — Includes — Sofa Bed — With Char-Brown Upholstery — Beige Occasional Chair — Beige Platform Rocker — Maple Finished Arms
3-PC. SOFA BED GROUP \$169

Reg. 119.00—Beige
SOFA BED, MODERN, SIMMONS \$99

NYLON & FOAM CONTOUR CHAIRS
Reg. \$129.95
\$99.88
Comfortable — nylon upholstered — rubber cushioned chairs which adjust to many positions — styled by Pontiac.

BRASS TREE LAMPS
Reg. \$29.95
\$22.88
72" tall with 3 bullet type shades — all brass finished, with weighted bases — 3-way lighting.

5-PC. COSCO CARD TABLE SET
Reg. \$51.75
\$39.88
Cosco's best quality deluxe card table & 4 matching chairs — choice of plastic upholstery colors — tan frames.

RING KOIL MAPLE Twin Bed Outfit
Reg. \$89.95
\$69.88
Maple finished panel head & foot board — Innerspring mattress — & matching box spring — steel side rails — twin size.

SEALY TWIN HOLLYWOOD BED
\$59.88
Comfortable innerspring mattress — matching box spring — steel bed frame — plastic headboard all included at this one low price.

SEALY MATTRESS & BOX SPRING SETS
\$59.88
A real bedding buy — full or twin size — comfortable innerspring mattress and matching box spring at one low price.

CORDUROY COVERED SOFA PILLOWS
Reg. \$2.98 Ea.
2 For \$5.00
Decorator pillows with removable zipped covers in round or square shapes — choice of many colors.

KING SIZE TV TABLES
Set Of 4
\$8.88
Big 17 x 21" metal TV trays — floral decoration with easy folding bronze finished bases.

12 FT. WIDE ALL WOOL FACE CARPET
Reg. \$5.95
\$4.88 Sq. Yd.
GOLD-LOOP PILE WITH FOAM PAD BACK.

ONE GROUP CHAIRS & ROCKERS
VALUES TO \$59.95
\$29⁸⁸
Choice of styles — colors — fabrics — some slightly soiled or damaged — discontinued styles & fabrics.



329 W. WASHINGTON ST. MARQUETTE CA 6-9956

NO MONEY DOWN UP TO 36 MONTHS TO PAY

Mail Appeal Under Way In County For March Of Dimes

"Nobody's need is greater than that of the crippled child. Yet thousands of disabled American children are not getting the best possible medical care."

This is the paradox underlined in a message mailed throughout Marquette County today requesting support for the 25th Anniversary March of Dimes.

The message is on a return-addressed envelope in which county residents may contribute toward providing help for victims of birth defects, arthritis and polio, leading causes of crippling and disabling in our children.

"These afflictions represent the most serious health problem facing children today," said Mrs. Lee Ives, Negaunee, Marquette County director of the March of Dimes campaign.

"In this country, she explained, '250,000 babies a year — come into the world handicapped by significant birth defects. In addition, thousands of the 11 million Americans disabled by arthritis or rheumatic diseases are children or adolescents."

"And it is a tragic situation that the great majority suffering from these disabling diseases are not receiving the early and comprehensive medical care which we can help them toward normal lives."

Making this exemplary medical care available to every community in the country is one of the primary goals of the National Foundation-March of Dimes, Mrs. Ives said, adding: "And we've made a very good start."

"There are now 50 March of Dimes-supported treatment centers for birth defects, arthritis or polio in many parts of the country. Right in the patient's home community, they are providing early diagnosis and timely treatments through teams of medical specialists, and helping parents solve the social and economic problems that so often accompany these diseases."

Mrs. Ives said that each March of Dimes-financed treatment center is also a "wave of influence" in the community. She said it provides medical leadership, spreads new knowledge and new care techniques, and creates greater public awareness about birth defects and arthritis which benefits victims of all disabling diseases.

In addition, Mrs. Ives said, mail contributions help support March of Dimes research.

"Dimes and dollars sent in by Marquette County residents," she said, "are enabling leading scientists to study the workings of genetics and heredity, the effect of drugs and chemicals on living organisms, the role of viruses, and to gain other insights which may lead to breakthroughs in preventing and treating birth defects, arthritis and other diseases."

"That is why the March of Dimes theme this year is 'Give for the Life of a Child.' I urge Marquette County residents to mail their contributions as soon as possible."



- SWIFT'S TENDERED STEER CHUCK
BEEF STEAK Lb. 59c
- SWIFT'S FINE TENDERED STEER BEEF
RIB STEAK Lb. 69c
- VERY LEAN PLATE (BOIL or BAKE)
SHORT RIBS Lb. 37c
- ALWAYS SPARKLING FRESH AND GOOD
GROUND BEEF Lb. 49c
- DELICIOUS SOUTHERN STYLE BULK
PORK SAUS. Lb. 35c
- BONELESS ROLLED BRISKET, RUMP OR
SIR. TIP RST. Lb. 89c
- 100% ALL MEAT TENDER SKINLESS
FRANKS 2 Lbs. 98c
- SO GOOD AND LOADED WITH VITAMIN "C"
"HI-C" FRUIT DRINK 46 Oz. Can 29c
- RICHEST IN PROTEIN—STICKS TO YOUR RIBS
Quaker Oats 42 Oz. Pkg. 39c
- THE WHOLE FAMILY LIKES IT
Skippy P. Butter 12 Oz. Jar 39c
- CRISP-N-GOOD ALWAYS FRESH
Thin Saltines 1 Lb. Box 23c
- MILWAUKEE'S FRESH REAL BULK
Sauer Kraut Full Qt. Jar 35c
- SNIDER'S FAMOUS CHILI PEPPER
Family Size Catsup 20 Oz. Btl. 39c
- LARGE CRISP COOKIES
Macaroons 30 For 29c
- INSTANT COFFEE —
Maxwell House 10 Oz. Jar \$1.19
- FOR DISHES AND FINE FABRICS
Octagon 3 Full Pints 63c
- BABBIT'S BLEACHING
Cleanser 14 Oz.—Only 10c
- FACTORY FRESH COLORED QUARTERS
Margarine 5 Lbs. 85c
- ICE ALL FLAVORS RICH CREAMY**
CREAM 1/2 Gal. 55c

JUMP FOR THESE

YELLOW QTRS. MARGARINE

BLUE SEAL
4 Lbs. 79c

- NORTHLAND'S FINEST
SHORTENING 3 Lb. Tin 69c
- CHICKEN OF THE SEA**
CHUNK TUNA 6 1/2 Oz. Tin 32c
- RASP.-APPLE. STRAW.-APPLE
HOLSUM PRESERVES 18 Oz. Jar 39c
- EXQUISITE FRESH
CUCUMBER SLICES 2 16 Oz. Jars 35c
- TOPPING
DREAM WHIP 2 Pkgs. 49c
- GELATIN DESSERTS
JELLO 3 Pkgs. 28c
- NORTHLAND'S FINEST
INSTANT COFFEE 6 Oz. Jar 69c

"FROZEN FOODS"
TABLE TESTED
FRENCH FRIES 9 Oz. Pkg. 10c

STOKELY'S FROZEN
T-V Dinners 2 Pkgs. 89c

- WATERMAID RICE** 2 Lb. Pkg. 35c
- GERBER'S STRAINED
BABY FOOD 6 Jars 65c
- AJAX CLEANSER** 2 Lge. Cans 33c
- AD DETERGENT** 10 Lb. Pkg. \$2.25
- FAB DETERGENT** Gt. Pkg. 79c
- VEL POWDER** Gt. Pkg. 79c
- AJAX
LIQUID CLEANER Gt. Btl. 65c
- LIQUID VEL** 10c Off 22 Oz. Btl. 52c
- CASHMERE
BOUQUET 3 Reg. Bars 31c
- CASHMERE
BOUQUET 2 Bath Size 31c
- PALMOLIVE
SOAP 3 Reg. Bars 31c
- BAGGIES
SANDWICH BAGS 100 Ct. Pkg. 55c
- KITCHEN CHARM
WAXED PAPER 2 75 Ft. Rolls 33c
- PAGE
TOILET TISSUE 4 Rolls 33c
- WHITNEY
CAT FOOD 2 Cans 29c

O'CELLO
SPONGES
Medium Size 21c

FLORIENT
DEODORANT
Spray Can 75c

BUBBLE BATH
SOAKIES 69c

SOAP
PALMOLIVE
2 Bath Size 31c

DIAMOND
CRUSHED
PINEAPPLE
2 20 Oz. Cans 49c

HI-C
GRAPE OR ORANGE
DRINK
3 46 Oz. Cans \$1

SURE SAVINGS

AMERICAN BEAUTY
VEGETABLE
OR TOMATO
SOUP
10 1/2 Oz. Can 10c

HOMEMAKER
PUMPKIN
15-OZ. CAN 10c

BAY DE NOC
CUT GREEN BEANS 16 Oz.
CUT WAX BEANS 16 Oz.
WHOLE POTATOES 16 Oz.
RED KIDNEY BEANS 15 Oz.
10c Can



GOOD EATING FOR YOUR FAMILY WITH HEARTY

BEEF STEW PRE-DICED, TENDER, AND FULL OF FLAVOR! Lb. 69c

FRESH CREAMERY
GRADE - A -

BUTTER Lb. 59c

SWIFT'S LEAN MEATY
SLICED BACON Lb. 49c

FIRM GOLDEN RIPE
BANANAS 2 Lbs. 29c

U. S. NO. 1 EATING OR COOKING NORTHERN SPIES
APPLES 4 Lbs. 39c

U. S. NO. 1 LOCAL GROWN
POTATOES 10 Lbs. 39c



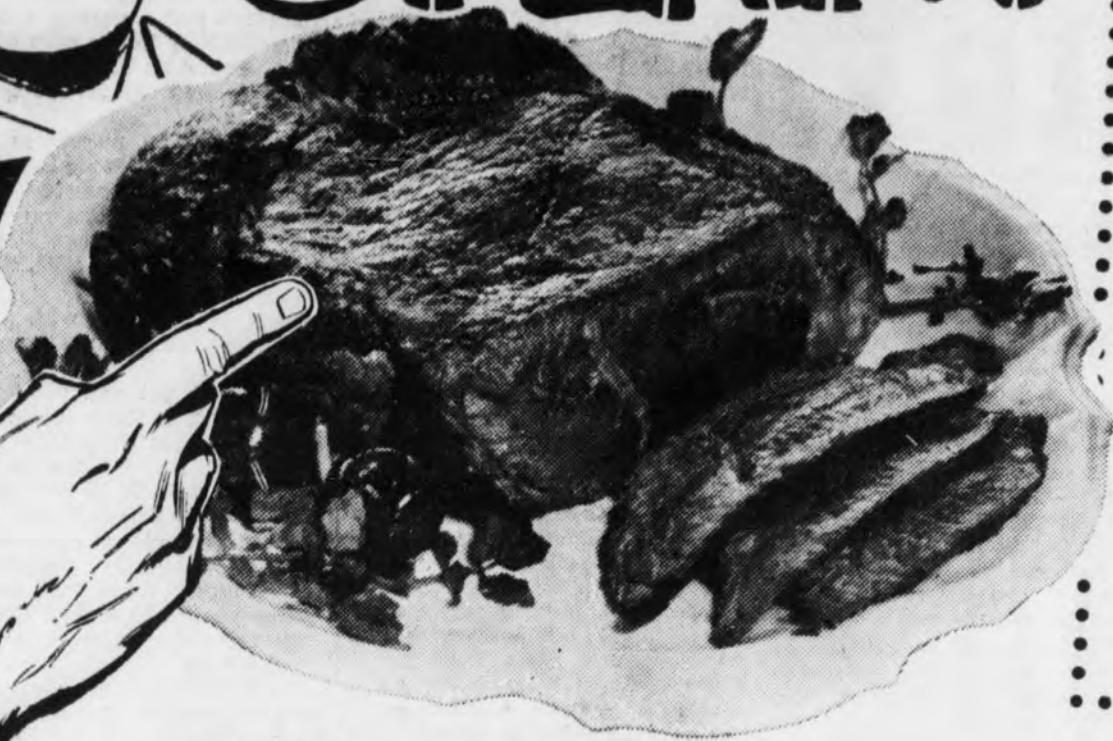


Have You Tried FAMILY STEAK?



We did at home the other night, and it's delicious! My wife liked it because there was no waste and it was tender... easy to carve. And the kids ate like they've never eaten before!

Why don't you stop in and let me show you our fine selection of family steak cuts? Your family will love it!



89¢ lb.

100% BONELESS
NO WASTE — ECONOMICAL



Valu Selected with S.V.T.

ROUND STEAK 69¢ lb.

Round steak is full of hearty beef flavor... and S.V.T. means excess waste and fat are removed to give you more good eating for your money!

- VALU SELECTED With S.V.T. RUMP ROAST Boneless Lb. 89c
- CUDAHY SMOKED BRAUNSCHWEIGER Per Lb. 39c
- ARMOUR'S COLUMBIA SLICED BACON 1-Lb. Pkg. 29c
- HY-GRADE THIN SLICED BEEF 3-Oz. Pkg. 25c

Floridagold Frozen

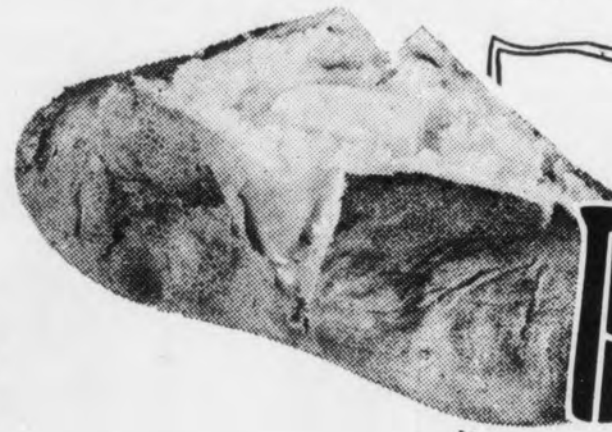
ORANGE JUICE



5 6 oz. cans 99¢

- ORE-IDA FROZEN TATER TOTS 4 1-Lb. Pkgs. \$1.00
- NORTH STATE FROZEN FANCY GRADE A WHOLE STRAWBERRIES 1-Lb. Cup 39c

Fresh From Our Dairy Department



U.S. No. 1—GRADE "A" LOCAL MICHIGAN WHITE—ALL PURPOSE

POTATOES 10 lb. bag 29¢

- FANCY MICHIGAN JONATHAN APPLES 4 Lbs. 39c
- ZIPPER SKIN SWEET TANGERINES Doz. 39c

- SHRIMP AHOY BREADED SHRIMP 10-Oz. Pkg. 69c
- 4-FISHERMEN FISH STICKS 8-Oz. Pkg. 29c
- Buy it by the piece— Mild Colby Cheese lb. 49c
- Pillsbury Danish Orange Rolls 9 1/2 oz. pkg. 35c



NEW LOW PRICE

COFFEE 2 Lb. Tin 99¢ LIMIT PLEASE

- H-C ASSORTED FRUIT DRINKS 46-Oz. Can 29c
- FLAV-O-RITE SMALL PRUNES 2-Lb. Pkg. 59c
- REGULAR OR INSTANT CREAM OF WHEAT 28-Oz. Pkg. 39c
- SMITH'S PURE HONEY 1-Lb. Jar 29c
- SUPER VALU WHITE ANGEL FOOD MIX 15-Oz. Pkg. 39c

- HEINZ JUMBO CATSUP 3 Big 20-Oz. Bottles \$1.00
- SHEDD'S LADY BETTY SALAD DRESSING Full Quart 39c
- KEYSTONE STEMS & PIECES MUSHROOMS 2 4-Oz. Cans 49c
- FLAV-O-RITE SPLIT GREEN PEAS 2 1-Lb. Bags 29c
- ROYAL PINK LIQUID DETERGENT 32-Oz. Bottle 49c

- LITE SPRY 2 Lb. Tin 57c
- WISK LIQUID 32 Oz. 67c, 1/2 Gal. \$1.27

- LUX SOAP 12 OZ. 35c, 22 OZ. 52c, 32 OZ. 73c
- LUX SOAP 3 Regular 31c

- BREEZE REGULAR 35c, GIANT 82c, KING \$1.37
- LUX SOAP 3 Bath 43c

- BLUE RINSO Giant Size 69c
- SURF Giant Size 64c
- VELURE—2-PLY SOFT TOILET Tissue 10 Rolls 79c

SUPER VALU KING SIZE CIGARETTES \$2.29 PLAIN Or FILTER



Our Best Measure is Customer Pleasure

GOLD BOND GIFT CENTER
—TEMPORARILY CLOSED—
Watch for Announcement Soon of New Gold Bond Gift Center Opening!

PLEASE MAIL ORDER FROM GOLD BOND GIFT CATALOG TO MINNEAPOLIS ADDRESS UNTIL OUR NEW GIFT STORE OPENS!



50 EXTRA GOLD BOND STAMPS
With this Coupon and Purchase of \$1.00 or More
FRESH PRODUCE
Limit One Coupon Per Family Offer Expires Sat., Jan. 5, 1963 ANGEL'S — MARQUETTE

50 EXTRA GOLD BOND STAMPS
With this Coupon and Purchase of Bakery Item except Bread from Our In-Store Home Bakery
FRESH BAKERY
Limit One Coupon Per Family Offer Expires Sat., Jan. 5, 1963 ANGEL'S — MARQUETTE

50 EXTRA GOLD BOND STAMPS
With this Coupon and Purchase of \$5.00 or More
FOOD PURCHASE
Except Beer—Wine—Cigarettes Limit One Coupon Per Family Offer Expires Sat., Jan. 5, 1963 ANGEL'S — MARQUETTE

50 EXTRA GOLD BOND STAMPS
With this Coupon and Purchase of 12 1/2-Oz. \$1.10 plus Free Dispenser
JERGENS LOTION
Limit One Coupon Per Family Offer Expires Sat., Jan. 5, 1963 ANGEL'S — MARQUETTE

Now is the time to stock up your pantry during . . .

National's 10¢ Sale!

- Pineapple Vita-Gold Juice 10-Oz. Can
- Sauerkraut Frank's Juice 2 29-Oz. Cans 33¢
- Tomato Juice Libby's Brand 13 1/2-Oz. Can
- Fruit Drinks Hi-C Orange, Grape, Pineapple-Orange, Pineapple-Grapefruit or Fruit Punch 12-Oz. Can
- Green Beans Kant Miss Cut 16-Oz. Can
- Wax Beans Trellis Whole 16-Oz. Can
- Cut Beets Garden Fresh 16-Oz. Can
- Cream Corn or Garden Fresh Whole Kernel 16-Oz. Can
- Vegetables American Beauty Mixed 15-Oz. Can
- Potatoes Sturgeon Bay Whole 14 1/2-Oz. Can
- Peas & Carrots American Beauty 14-Oz. Can
- Tomatoes American Beauty 10-Oz. Can
- Potatoes Kolby's Shoestring 4-Oz. Can
- Muffin Mix Jiffy Corn 8 1/4-Oz. Pkg.
- Natco Salt Plain or Iodized 26 Oz. Ctn.
- Kidney Beans American Beauty 15-Oz. Can
- Pork & Beans American Beauty 15-Oz. Can
- Spaghetti American Beauty 15-Oz. Can
- Tomato Soup or American Beauty Vegetable or Chicken Noodle 10-Oz. Can
- Frozen Waffles Top-Taste Delicious 5-Oz. Pkg.
- Puddings My-T-Fine Brand 4-Oz. Pkg.
- Paper Napkins Part Brand 80-Ct. Pkg.
- Elbo Macaroni or White Pearl Shells 7-Oz. Pkg.
- Frozen Potatoes French Fried Packers Label 10-Oz. Pkg.

10¢

Chuck Steaks

Chuck Roasts

Bnls. Beef Roasts

Pork Tenderloins

BLADE CUT
Colorado "Corn-Fed" Beef; Unconditionally Guaranteed Lb. **59¢**

BONELESS
Colorado "Corn-Fed" Beef; Unconditionally Guaranteed Lb. **69¢**

ROLLED
Cut and Trimmed "National's "Value-Way" Lb. **89¢**

Whole Unconditionally Guaranteed Lb. **69¢**

- Colorado Corn-Fed Beef, Lean **GROUND CHUCK** Lb. 69¢
- Colorado Corn-Fed Beef, Boneless **BEEF STEW** Lb. 69¢
- National's Own Hillside **SLICED BACON** 1-Lb. Pkg. 45¢
- National's Own Top-Taste Pork **SAUSAGE LINKS** 1-Lb. Pkg. 59¢

- All Meat Pork **TENDERLOIN PATTIES** Lb. 79¢
- Booth's **BREADED SHRIMP** 10-Oz. Pkg. 69¢
- Market Sliced **BOILED HAM** 1-Lb. Pkg. 99¢
- Worthmore—Any Size Piece **LARGE BOLOGNA** Lb. 39¢

"JUST CAN'T FIND FRESHER, FINER PRODUCE"

US No. 1 Grade White POTATOES



GOOD WINTER KEEPERS

10-Lb. Bag	25-Lb. Bag	50-Lb. Bag
39¢	69¢	\$1.35

- Orchard Fresh **FRUIT COCKTAIL** 3 29-Oz. Cans \$1.00
- Orchard Fresh Sweet Broken Segments **GRAPEFRUIT** 2 17-Oz. Cans 39¢
- Orchard Fresh Unpeeled **WHOLE APRICOTS** 4 29-Oz. Cans \$1.00
- Garden Fresh **TOMATO JUICE** 46-Oz. Can 25¢
- Orchard Fresh Pineapple-Grapefruit **FRUIT DRINK** 46-Oz. Can 25¢

COUPON

REDEEM FOR . . .

50 GIFT HOUSE STAMPS

With A **GROCERY PURCHASE OF \$3.50**

GOOD ONLY AT NATIONAL

Limit One Per Family—Expires Sat., Jan. 5th, 1963

"National's Own, Baked Fresh Daily, Top-Taste"

SANDWICH BREAD 1 1/2-Lb. Loaf

RAISIN BREAD 1-Lb. Loaf

FRESH DONUTS 12-Ct.

Mix 'Em or Match 'Em **2 for 49¢** Buy Two Save Up to 9¢

Beverages

"Top Treat" All Flavors **10¢**

24 Oz. Btl.

Limit One Per Family—Expires Sat., Jan. 5th, 1963

- Emperor Grapes Sweet and Plump Lb. 19¢
- Fresh Carrots Crisp and in Cello Pkgs. 2 1-Lb. Pkgs. 25¢
- Fresh Oranges No. 113 Size Sunlight Juicy and Sweet Dozen 69¢
- Crisp Slaw Delicious in a Salad 2 8-Oz. Pkgs. 29¢
- Parsnips or Crisp Turnips 1-Lb. Pkg. 19¢
- Rutabagas Solid and Flavorful Lb. 8¢
- McIntosh Apples Sweet and Crisp 4 Lb. Bag 49¢
- Delicious Apples Golden or Red Western 2 Lbs. for 49¢
- D'Anjou Pears Honey Sweet and Juicy 2 Lbs. for 39¢

COUPON

REDEEM FOR . . .

50 BONUS STAMPS

With the Purchase of One 2 1/4-Lb. Pkg. of On-Cor Sliced **BEEF IN GRAVY**.....\$1.98

GOOD AT ANY NATIONAL FOOD STORE

One Per Family Expires Saturday, January 5th

COUPON

REDEEM FOR . . .

25 BONUS STAMPS

With the Purchase of Two 15-Oz. Jars Lady Betty **CUCUMBER WAFERS**...2 15-Oz. Jars 49¢

GOOD AT ANY NATIONAL FOOD STORE

One Per Family Expires Saturday, January 5th

- ### Fresh Dairy Products
- Casino **BRICK CHEESE** 1-Lb. for 55¢
 - NATCO GRADE A **LARGE EGGS** Doz. for 57¢
 - Natco **CHEESE SPREAD** 2-Lb. Box 77¢

- ### Fresh Frozen Foods
- Morton's Chicken, Beef, Turkey or **HAM DINNERS** 11-Oz. Pkg. 49¢
 - Orchard Fresh Sliced **STRAWBERRIES** 10-Oz. Pkg. 20¢
 - Swiss Miss Apple, Cherry, or Peach **FRUIT PIES** 20-Oz. Pie 29¢
 - Morton's Chicken, Beef, Turkey **HOT PIES** 5 8-Oz. Pie \$1.00

Snow-White **Cauliflower** California Finest Large Head 39¢

Washed and Cleaned Fresh **Spinach** 1-Lb. Pkg. 29¢

Double Stamp Day

EACH **Wednesday** AT **National**

NATIONAL FOOD STORES

(Restricted Fair Trade and Minimum Markup Items)

DRIP OR REGULAR GRIND NATCO COFFEE 1-Lb. Tin 59¢	NATCO BLACK TEA BAGS 50-Ct. Pkg. 49¢	MANOR HOUSE 15c Off INSTANT COFFEE 5-Oz. Jar 60¢	TOP-TREAT DELUXE LAYER CAKE MIXES 19-Oz. Pkg. 29¢	COLD MEDAL ENRICHED FLOUR 5-Lb. Bag 57¢	SPRY SHORTENING 5c Off 2-Lb. Tin 60¢	NATCO SALAD OIL 16-Oz. Btl. 33¢	PILLSBURY LOAF CAKE MIXES White—Yellow—Chocolate 2 9-Oz. Pkgs. 41¢
WILDERNESS ASSORTED PIE MIXES 3 20-Oz. Cans \$1.00	SO-FRESH POTATO CHIPS 1-Lb. Box 49¢	Wyandotte Extra Large Whole RIPE OLIVES 17-Oz. Can 29¢	SNIDER'S CATSUP 6 14-Oz. Btl. 79¢	Natco Creamy or Crunchy PEANUT BUTTER 12-Oz. Jar 39¢	CHEF-BOY-AR-DEE PIZZA MIX With Cheese 15 1/2-Oz. Pkg. 49¢ With Sausage 17-Oz. Pkg. 59¢	TOP-TASTE CORNED BEEF HASH 15 1/2-Oz. Can 35¢	TOP-TASTE CHILI w/BEANS 15 1/2-Oz. Can 29¢



Dear Abby...

BY ABIGAIL VAN BUREN



DEAR ABBY: What is your opinion of a father showering with a 4-year-old son? We recently took our son on a trip and, when I let him shower with me, my wife went on a rampage. She also has many other ideas about life and nature that I think are unnatural. I can't understand how I ever ended up with her as a partner because it wasn't a must. If you agree with me, please say so in your column.

really forgiven them. Also, you blame the girl. If you really want to GIVE them a wedding gift, give them something. But don't invite them to select whatever they want in a grand magnanimous gesture — and then spoil it by telling them where they must buy it.

DEAR ABBY: Before my boy friend went into the service he gave me a diamond and we became officially engaged. We plan to be married when he returns in 13 months. Now that is a long time to sit home, Abby. I have gone out a few times, but only to keep from going crazy. I don't let anyone kiss me or anything like that. I am really being true in heart to my boy friend, because I DO love him. My family thinks I am terrible. Is it wrong for a girl to hook a fellow to take her out when she tells him from the start they can only be friends?

DEAR ABBY: Our son (22) and his girl (23) eloped. We were very hurt but we forgave them. Dad and I offered to furnish their apartment as a wedding gift. We told them to go to my brother's furniture store and pick out what they wanted. Well, this girl walked around the store half a day and couldn't find one thing she liked. Imagine! Then she asked if they could have the cash instead. Our son sits and lets her do all the talking. So far we haven't decided what to do about it. My husband says to give them the cash. I say they don't deserve anything. We'd like your advice.

DEAR ABBY: I live in a small town where rummage sales, dances and food sales are posted in the store windows for all to read. Lately we have had a new type "notice," which has me completely flabbergasted. Baby and bridal showers are being announced, inviting anyone interest-

e do attend. What is your opinion on this?

CANYON CITY
DEAR CANYON CITY: It sounds like a free-for-all — but not exactly free.

What's on your mind? For a personal reply, send a self-addressed, stamped envelope to Abby, Box 3365, Beverly Hills, Calif. (McNaught Syndicate, Inc.)

The United States, including the new states of Alaska and Hawaii, covers an area of 5,625,000 square miles.

Dutch Elm Disease Blamed For Decision

SODUS (AP) — Dutch elm disease has been blamed for the decision of Frank Deaner & Sons to leave the box and package manufacturing industry after 46 years in business at Sodus. The firm said the factory had used elm timber to make wooden packaging material for fruit and vegetables. The plant's machinery was sold to the New Albany Basket Co. of New Albany, Ind., and other material was purchased by fruit growers Package Co. of Paw Paw.

Birdlife

- ACROSS
- Expert diving bird
 - Sea eagles
 - Extinct bird
 - Chemical suffix
 - Female ruff
 - Feminine appellation
 - Expire
 - Quivering
 - Heating device
 - Protesters
 - Through
 - Winglike part
 - Austere
 - Dispassionate
 - Boundary (comb. form)
 - Light touch
 - Metal
 - Brew
 - In three ways (comb. form)
 - Flouts
 - Narrate
 - Grain
 - Born
 - Restrict
 - Capacity measure
 - Pillar
 - Vestige
 - Age
 - Before
 - Tail
 - Birds fly through the
 - Small tumor
 - Short jackets
 - New Guinea port

Answer to Previous Puzzle

H	A	M	A	I	T	I	T	A	M	A	L	E
A	R	E	E	A	R	E	R	E	A	R	E	E
L	I	N	G	I	N	G	I	N	G	I	N	G
N	O	I	N	O	I	N	O	I	N	O	I	N
O	N	E	S	I	S	I	S	I	S	I	S	I
I	N	T	A	M	A	L	E	M	A	L	E	M
A	R	E	E	A	R	E	E	A	R	E	E	A
L	I	N	G	I	N	G	I	N	G	I	N	G
N	O	I	N	O	I	N	O	I	N	O	I	N
O	N	E	S	I	S	I	S	I	S	I	S	I

DOWN

- Military assistant
- Distinct part
- Sharp
- Expunger
- Legal point
- Fiber knots
- Night before an event
- Inflam
- Masculine suffix
- Heavy blow
- Esmets
- Suman
- Vulgar fellow
- Meal
- Nautical term
- Topers
- Ireland
- Climbing plant
- Things done
- Winglike part
- Small pastry
- Great Lake
- Morindin dye
- Eternity
- Racket
- Fishermen of a sort
- River duck
- Pseudonym of Charles Lamb
- Uncommon
- Rodent
- Killed
- Cameroons
- Negro
- Against

HER HUSBAND
DEAR HUSBAND: Merely "agreeing" with you (which I certainly do) won't solve your problem. Your wife should have a talk with her family doctor about her "unnatural" ideas. She needs to trade some of her twisted, unhealthy theories for some enlightened, healthy ones.

DEAR ABBY: I am terrible. Is it wrong for a girl to hook a fellow to take her out when she tells him from the start they can only be friends?

DEAR ABBY: I live in a small town where rummage sales, dances and food sales are posted in the store windows for all to read. Lately we have had a new type "notice," which has me completely flabbergasted. Baby and bridal showers are being announced, inviting anyone interest-

DONALD DUCK

BUGS BUNNY

MORTY MECKLE

LIL' ABNER

OUR BOARDING HOUSE

ALLEY OOP

WASH TUBS

FRECKLES

BARNEY GOOGLE

BLONDIE

HENRY

RIP KIRBY

STEVE CANYON

BEN CASEY

One Jailed, Three Fined By City Judge

One person was jailed and three others were ordered to pay fines and costs totaling \$20 in municipal court this week.

Judge Edward H. Dembowski ordered James R. L'Hullier, 23, of 200 Blomhuber Ave., to spend a 10-day term in the county jail for driving with a revoked operator's license.

Speeding Counts
For speeding, driving 40 miles per hour in a 25-mile-per-hour zone on Lincoln Ave., L'Hullier was ordered to spend two days in jail. Alternative sentence for speeding was to pay a fine of \$6.30 and \$3.70 costs. City police arrested him Monday on Fair Ave.

Paul J. King, Gwinn, was fined \$6.30 and ordered to pay costs of \$3.70 for speeding. King was ticketed by city police Dec. 20 for driving 40 miles per hour in a 25-MPH zone on W. Washington St. For speeding, Reginald G. Hansen, Wright St., paid a fine of \$1.30 and \$3.70 costs. City police issued the summons Dec. 22 for driving 45 miles per hour in a 35-MPH zone on U. S. 41 in the city.

A fine of \$1.30 and \$3.70 costs were paid by William J. Beckman, 1305 Russell St., for unsafe backing on W. College Ave. He was ticketed by city police following an accident Dec. 23.

U.S. Nixes Fun Travel In Business

WASHINGTON (AP) — The government has set the brake on free-wheeling fun at the expense of other taxpayers.

The cost of business travel is always a legitimate income tax deduction. But too many trips—when examined by the tax man—have turned out to be work-and-play excursions with the emphasis on play.

From Jan. 1 on, out-of-town playtime is strictly at the taxpayer's own expense under the Internal Revenue Service's new regulation for business travel, entertainment and gifts.

The regulation, effective for 1963 income tax returns, is designed to insure that the great body of American taxpayers isn't footing the bill for free-lodging junkets, night club and theatre forays to the big city, and winter vacations under the southern sun. Taxpayers who claim deductions for travel costs must record in a diary or account book every expenditure for out-of-town meals, lodging and incidentals, large or small. A voucher or receipt must be retained and kept for any outlay of \$25 or more, except for train, plane or bus tickets.

However, employees who are reimbursed for travel, entertainment and gift outlays, and therefore do not claim deduction on their own, are not expressly required to keep the diary of costs which IRS otherwise demands.

Per Diem Allowance
Companies which follow the fairly common practice of giving employees a flat per diem allowance for travel of \$25 or less need not keep substantiating records. The \$25 limit does not include entertainment, or plane or rail fares.

Similarly, a mileage allowance for transportation can be used without substantiation if it does not exceed 15 cents a mile.

The day to day record of business travel which the new regulations require must be completed within a couple of days after the expenditure was made and must include the following information:

1. Amount. Each outlay must be noted separately, although breakfast, lunch and dinner may be shown for each day as a single item. "meals." Small and incidental items also may be grouped under such headings as taxi fares, tips, or gas and oil.

2. Time. The record must show the dates of departure and return, and the number of days spent away from home on business.

3. Place.—The city of destination or area of travel.

4. Business purpose. The business reason for the travel must be stated.

5,000 Convicts At Jackson Enjoy Song, Dance Show

JACKSON (AP) — About 5,000 convicts at Jackson Prison ushered the New Year in Tuesday with song and dance, complete with costumed chorus girls.

The inmates of the world's largest walled prison maintained their best behavior as they watched a stage show in the prison auditorium.

Miss Ruby Jones, Detroit, who has been staging the New Year's Day shows since 1957 as a morale booster for the inmates, brought a troupe of 40 singers, dancers and musicians to the prison.

Too Many Horses At Florida Airport

VERO BEACH, Fla. (AP) — Airport manager Floyd Boyer says traffic is too heavy at the Vero Beach Airport—horse traffic that is.

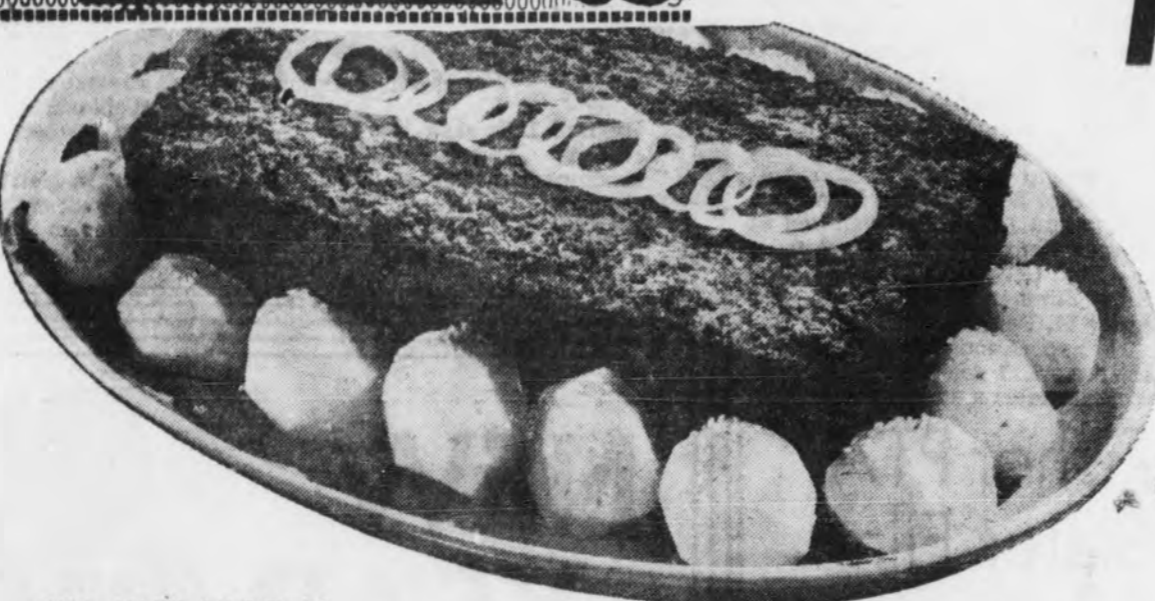
He said Wednesday the airport area has no fence around it and horsemen are using the runways for riding strips. Boyer said he intends to stop the horseplay, but he didn't say how.

VALUABLE
THIS COUPON ENTITLES YOU TO...
50 EXTRA S&H GREEN STAMPS
FREE
With Purchase Of \$5.00 Or More At Red Owl (Except Cigarettes). Limit—One Coupon Per Customer. Coupon Expires Sat., Jan. 5.

VALUABLE
THIS COUPON ENTITLES YOU TO...
100 S&H GREEN STAMPS
With Purchase Of A 20 Qt. Pkg. Red Owl Instant Non-Fat Dry Milk (Reg. Retail \$1.29) Limit—One Coupon Per Customer. Expires Sat., Jan. 5.

VALUABLE
THIS COUPON ENTITLES YOU TO...
50 S&H GREEN STAMPS
With Purchase Of Any Red Owl Insured Beef Roast Of Your Choice (6 1/2 Lb. & Up). Limit—One Coupon Per Customer. Expires Sat., Jan. 5.

VALUABLE
THIS COUPON ENTITLES YOU TO...
50 S&H GREEN STAMPS
With Purchase Of 15-Oz. Jar Red Owl Peanut Butter (Reg. Retail 57c) Limit—One Coupon Per Customer. Expires Sat., Jan. 5.



RED OWL FROZEN
Fish Sticks
GRAPE OR ORANGE DRINK
Hi-Drink
RED OWL FROZEN—ALL VARIETIES EXCEPT ASPARAGUS
Vegetables
RED OWL—WHITE, DEVILS FOOD, YELLOW OR SPICE
Cake Mixes

PRICES EFFECTIVE THROUGH SAT., JAN. 5

RED ROME BEAUTY
Apples
IDEAL FOR BAKING
449¢ LBS.

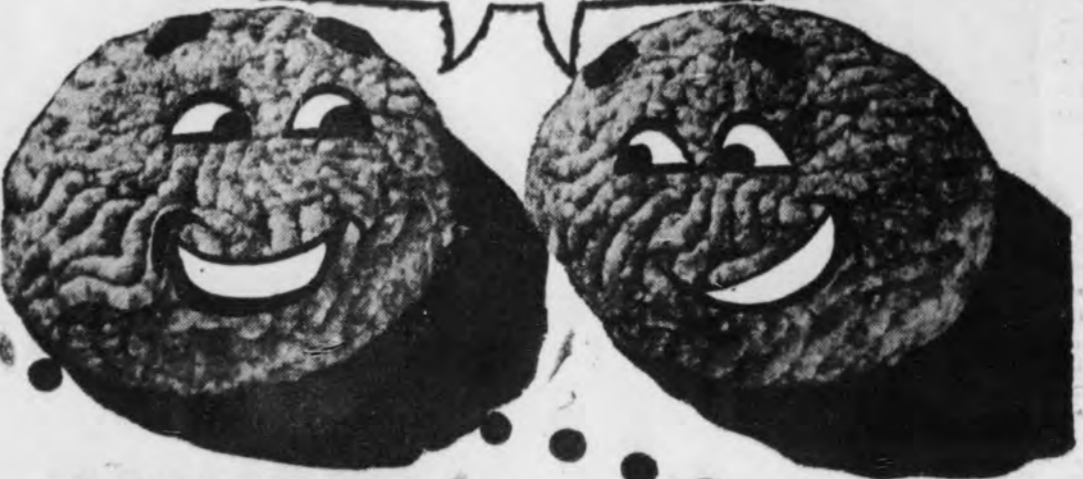
SERVE A HEARTY BOILED DINNER TONIGHT!
ONIONS, CABBAGE, RUTABAGAS AND ...
Carrots LB. **10¢**

RED OWL

Have a banquet on a budget!

BONELESS PORK BUTT
Pork Roast
EASY TO CARVE
49¢ LB.

with RED OWL INSURED GROUND BEEF
Ideal for hamburgers, meat loaves, hot dishes... Red Owl Ground Beef is made from pure, lean Government inspected beef, with just enough fat added to give it a richer flavor and a more tender juiciness. Will not fry away.



RED OWL INSURED
Ground Beef
FRESH!
39¢ LB.

OSCAR MAYER—HAM FLAVORED SAUSAGES
SMOKIE LINKS 12-OZ. PKG. **55¢**

SNOWY WHITE
HALIBUT STEAKS LB. **59¢**

DUBUQUE—BONELESS READY-TO-EAT
PICNICS 4 1/2-LB. TIN **\$2.99**

GOOD HOUSEKEEPING
COOK BOOKS
THIS WEEK—ICE CREAM AND COOL DRINKS
EACH LOOSE LEAF BINDER HOLDS ALL 70 COOK BOOKS
EACH **79¢**

CANNED VEGETABLE SALE

- MIX OR MATCH 'EM—CHECK OFF YOUR FAVORITES
- WIZDOM BRAND CUT GREEN BEANS 15 1/2-OZ. CAN
 - WIZDOM CUT YELLOW WAX BEANS 15 1/2-OZ. CAN
 - WIZDOM GREAT NORTHERN BEANS in plain sauce—15-OZ. CAN
 - WIZDOM PORK & BEANS in tomato sauce 16-OZ. CAN
 - WIZDOM select, RED KIDNEY BEANS 15 1/2-OZ. CAN
 - WIZDOM RED BEANS, Ideal for chili 15 1/2-OZ. CAN
 - WIZDOM seasoned CHILI HOT BEANS 15-OZ. CAN
 - STURGEON BAY, whole, small BEANS POTATOES 16-OZ. CAN
 - TOP VALUE whole kernel GOLDEN CORN 16-OZ. CAN
 - WIZDOM GOLDEN CREAMERS CORN 16-OZ. CAN
 - TOY TOWN—whole kernel GOLDEN CORN—16-OZ. CAN
- YOUR CHOICE **6** CANS **59¢**
- FLAVOREE SALAD
Dressing QUART JAR **39¢**
- BOOTH FROZEN OCEAN PERCH
Fillets 1-LB. PKG. **43¢**
- FARMDALE COLBY
Colby Cheese LB. **59¢**
- RED OWL—RASPBERRY OR STRAWBERRY
Preserves 2-LB. JAR **59¢**

- JENO'S—WITH CHEESE **PIZZA** 15 1/2-OZ. PKG. **49¢**
- JENO'S—WITH SAUSAGE **PIZZA** 17-OZ. PKG. **59¢**
- BROADCAST CORNED **BEEF HASH** 3 15 1/2-OZ. CANS **1.00**
- BROADCAST **BEEF STEW** 3 15 1/2-OZ. CANS **1.00**
- NABISCO PREMIUM SALTINE **CRACKERS** 1-LB. BOX **29¢**

TOILET TISSUE—WHITE, PINK OR YELLOW
Northern 12 ROLLS **1.00**

RED OWL INSTANT
Coffee 20¢ OFF 6-OZ. JAR **69¢**

CHOICE OF 10 DELICIOUS FLAVORS
JELL-O
3 3-OZ. PKGS. **29¢**



GET ALL THREE IN '63



TABLERITE...
ASSURES SATISFACTION WHEN
YOU SERVE THIS LOIN END

QUALITY FRIENDLINESS SAVINGS

Only the most select of foods are offered to you, our customers. You can be sure of serving tender meats, fresh produce, tasty dairy and baked products, quality controlled canned and packaged goods when you buy at your IGA Food Store.

We are dedicated to bringing you fine foods at the lowest possible cost. You'll find you do save more on food purchases when you make the "Total Test," at IGA.

Our every concern is for your complete shopping comfort. We are here to serve you in every way possible. Shop IGA today and enjoy Red Carpet Service, courtesy, and the sincere interest that local ownership provides.



BANQUET DINNERS 11 Oz. Pkg. 35c



Pork Roast

49c
Lb.

- IGA **CORN** 7 16 Oz. Can 88c
- JENA—WITH CHEESE
- PIZZA** Pkg. 49c
- HOLSUM
- GRAPE JELLY** 15 Oz. Jar 39c
- STURGEON BAY
- APPLE SAUCE** ... 2 16 Oz. Cans 27c
- IGA
- TOMATO JUICE** ... 46 Oz. Can 25c

- RIB END PORK ROAST** Lb. 39c
- CENTER CUT PORK CHOPS** Lb. 69c
- SPARERIBS** Lb. 39c

IGA FOOD
by Eddie Doucette

MAGIC!



STUFFED PORK LOIN

Have butcher remove Chine Bone from 4-lb. TableRite Pork Loin and cut chops almost through. Fill space between chops with savory stuffing interspersed with pieces of apple and raisins. Fasten with skewers or tie so stuffing will remain between chops. Place meat on rack with fat side up and roast in 325° oven about 3 hours. Serve hot with gravy, roasted potatoes, apple sauce and choice of vegetables.

THIS MONTH'S IGA SPECIAL

MUCHMORE STD.

PEARS 29 Oz. Can

OR HUNT'S 29 Oz. Can

PEACHES Can

4 \$1
FOR

CRISP RED

McIntosh Apples

4 Lb. Cello Bag **39c**



GOLDEN SWEET

FINGER CARROTS

1 Lb. Cello Bag **10c**

TABLERITE

SLICED BACON Lb. 49c

ARMOUR'S STAR SKINLESS

WIENERS Lb. 49c

SNIDER'S

Catsup 2 20 Oz. Btls. 39c

ALL FLAVORS

Jello 3 Pkgs. 25c

WILDERNESS BLUEBERRY Or STRAWBERRY

Pie Mix 3 16 Oz. Cans \$1

PAGE

TISSUE 4 Rolls 29c

HOLSUM STRAWBERRY

PRESERVES 2 Lb. Jar 59c

MAXWELL HOUSE	2 Lb. Tin	1.15
Coffee		
LIQUID		
Lux	12 Oz. Btl. 35c 22 Oz. Btl. 60c 32 Oz. Btl.	86c
Handy Andy	Qt. Btl.	75c
Freshrap	100 Ft. Roll	25c

FRESH-PAK	Quart Jar	35c
Salad Dressing		
Liquid Swan	22 Oz. Btl. 60c 32 Oz. Btl.	86c
Breeze	Lge. Pkg. 35c Giant Pkg. 83c King Pkg.	1.39
Praise Reg. Soap	2 Bars	27c

NESCAFE OR IGA	10 Oz. Jar	99c
Instant Coffee		
WITH BEANS		
Armour's Chili	16 Oz. Can	34c
Wisk	Quart Btl. 71c 1/2 Gal. Btl.	1.39
Lux Reg. Soap	3 Bars	31c

JIF	12 Oz. Jar	43c
Peanut Butter		
BROADCAST		
Corn Beef Hash	3 15 1/2 Oz. Cans	1.00
Rinso Blue	Lge. Pkg. 28c Giant Pkg.	69c
All	49 Oz. Pkg. 79c 10 Lb. Pkg.	2.25

LA CHOY	11 Oz. Can	29c
Vegetables		
CHICKEN OF SEA		
Chunk Tuna	6 1/2 Oz. Can	35c
GERBER'S STRAINED		
Baby Food	6 4 1/4 Oz. Jars	65c
FRENCH'S		
Black Pepper	4 Oz. Tin	39c

NEGAUNEE IGA MIRACLE
IGA FOODLINER IGA FOODLINER
TREWHELLA'S IGA STORE, PALMER

SIOUX	1 Lb. Jar	37c
Bee Honey		
BUSTER TWIN-PAK		
Spanish Peanuts	Lb. Pkg.	45c
REYNOLD'S		
Aluminum Foil	Reg. 25 Ft. Roll	33c
Swiftning	3 Lb. Tin	69c

3 New Council Members Take Office Tonight

NEGAUNEE — Three new members of the Negaunee City Council, selected at the November election, will assume their duties tonight when the municipal governing body holds its annual organization meeting.

Obituary

FRANK JAASKI — Services for Frank Jaaski, who died Tuesday, will be held tomorrow at 2 p. m. in the Jackson Funeral Home.

DANIEL R. TULLILA — Daniel R. Tullila, 21, Negaunee Township, died at 2:45 yesterday morning in Ferguson Hospital, Newberry, where he had been a patient 16 years.

Other business on the agenda includes appointment of a replacement for Horace Dompierre, whose term as a member of the municipal civil service commission expired Dec. 31; presentation of financial reports by City Manager Leonard Harris, a communication from the Michigan Liquor Control Commission concerning renewal of tavern licenses, and a letter regarding the annual conference for tax assessing officers that is scheduled Jan. 16-17 at Michigan College of Mining and Technology, Houghton.



ALVIN C. HAMPTON



SELDEN VON DER HOFF

March Of Dimes Chairmen In Negaunee, Forsyth Named

Appointment of Alvin C. Hampton, Negaunee, and Selden W. von der Hoff, Gwin, as March of Dimes campaign directors in their respective communities was announced today by Mrs. L. B. Ives, Negaunee, county chairman.

7 Buildings Approved As Fallout Shelters

NEGAUNEE — Seven Negaunee buildings have been approved by the U. S. Corps of Engineers for fallout shelters, City Manager Leonard Harris disclosed today.

According to the survey, buildings approved would provide shelter for 2,967 residents, which is approximately 45 per cent of the population, based on the 1960 census. Largest of the shelters would be the Central Grade School with a capacity rated at 1,032 persons, while the Tracy Mine buildings with a capacity of 456 would rank second.

Marquette Driver Given Summons

ISHPEMING — A Marquette motorist, Ernest J. Woodbridge, 805 W. Kaye St., was given a summons by Ishpeming police yesterday for improper passing and lane usage.

Woodbridge was passing another car and, while starting to cut back to his own lane, started to slide, striking a vehicle driven by Charles A. Rose, Ishpeming, who was traveling in the opposite direction.

The accident took place near the north entrance to the city on U. S. 41.

Some parents permit children to check grocery price slips to help them improve their arithmetic for school assignments.

ANNUAL JANUARY CLEARANCE SALE FEATURING DRASTIC REDUCTIONS ON SKIRTS-DRESSES-JEWELRY HATS-PURSES-GLOVES Starts Thursday Morning, Jan. 3

CHARLOTTE'S, New Swanzy YOU'LL LOVE THE THINGS YOU SEE INSIDE STORE HOURS: MONDAY THRU FRIDAY 10 A. M. TO 5:30 P. M.; SATURDAY 9 A. M. TO 9 P. M.

Television -- Radio

Cable TV viewers will find their stations on different channels as follows: Ch. 6 becomes Ch. 5 on Cable -- Ch. 11 becomes Ch. 4 and Ch. 5 is Ch. 2.

Table of television and radio programs for Thursday and Friday, including times and program titles like 'Going My Way', 'The Tonight Show', 'The Juggler', etc.

WDMJ RADIO 1320 ON YOUR DIAL

Table of radio programs for Thursday and Friday, including times and program titles like 'Morning Bell', 'Coffee Club', 'The Juggler', etc.



Katherine Berkel

Munising Bethel Installs Miss Berkel As Queen

MUNISING — Miss Katherine Berkel, daughter of Mr. and Mrs. Howard Berkel, 311 Elm Ave., was installed as honored queen of Bethel No. 43, International Order of Job's Daughters, at a ceremony in Masonic Hall.

6,935,380 Cars Built Last Year

DETROIT (AP)—Passenger car production last year was up 25.7 per cent from the previous year, the five passenger car manufacturers reported Wednesday. There were 6,935,380 cars built in 1962, second only to the 1955 total of 7,942,125.

DANCING FRI-SAT. NITES SUNDAY AFTERNOON

ARLENE HANN TRIO SPECIAL FEATURE LIMBO CONTEST at 9 p.m. Fri.

FRIDAY FISH FRY 50¢ SHRIMP \$1.00

SATURDAY TENDER STEAK DINNER ..\$1.00 LOIN

WAYSIDE BAR COUNTY ROAD 581 ISHPEMING

L'Anse PTA Meeting Set For Jan. 15

L'ANSE — Dr. Harold Meese, dean of students, and Glen Stillion, student counselor, both of Michigan College of Mining and Technology, will discuss college entrance requirements at the January meeting of the L'Anse Parent-Teacher Association Tuesday, Jan. 15.

With college facilities being taxed by rapidly increasing numbers of college applicants, it is important that high school students receive adequate preparation.

Munising The next meeting of the Washington School PTA will be held at 7:30 p.m. Jan. 21, instead of Jan. 7, in the school gym.

Negaunee Tracy Mine Local 4793 will meet at 9:30 Saturday morning in the VFW building.

The Leola Green Circle of the Women's Society of Christian Service of Mitchell Methodist Church will meet Thursday at 7:30 in the home of Mrs. Douglas Mood, Linden St., Ishpeming.

Ishpeming An "open house" reception in honor of Mr. and Mrs. James Johnson on their 40th wedding anniversary will be held in their home, 771 E. Empire St., Friday night, starting at 7. An invitation is extended to relatives, friends and neighbors.

First Aid Course For Bus Drivers To Start Jan. 8

MUNISING — A first aid course for all bus drivers in the Munising public school system will be started Tuesday, Jan. 8, at 9 a.m., according to William T. MacNeil, superintendent.

Tomahawk Bowmen To Meet Friday Night

ISHPEMING — The Ishpeming Tomahawk Bowmen will meet tomorrow night at 7 in the rear of the Dairy Mart on Division St.

Garden City Awarded Urban Renewal Grant

WASHINGTON (AP) — The Urban Renewal Administration announced Wednesday it had granted Garden City, Mich., \$435,402 to begin work on the 35-acre Cherry Hill slum clearance project.

Tri-County Briefs

Alger . Baraga . Marquette

Munising The next meeting of the Washington School PTA will be held at 7:30 p.m. Jan. 21, instead of Jan. 7, in the school gym.

Negaunee Tracy Mine Local 4793 will meet at 9:30 Saturday morning in the VFW building.

The Leola Green Circle of the Women's Society of Christian Service of Mitchell Methodist Church will meet Thursday at 7:30 in the home of Mrs. Douglas Mood, Linden St., Ishpeming.

Ishpeming An "open house" reception in honor of Mr. and Mrs. James Johnson on their 40th wedding anniversary will be held in their home, 771 E. Empire St., Friday night, starting at 7. An invitation is extended to relatives, friends and neighbors.

Ladies and Knights of Kaleva will meet for a family get-together at 6 p.m. Friday at the lodge quarters. All members and families are welcome.

The Hematite Business and Professional Women's Club will meet in the Georgian Room of the Mather Inn Monday evening. Time of the dinner has been changed from 6:30 to 7.

Chiffs Shaft Local 2656, United Steelworkers Union, will meet at 2 p.m. Friday.

A regular meeting of the Order of Eastern Star will be held Tuesday, Jan. 8.

Mr. and Mrs. William A. Kelley and family have returned to L'Anse, Mich., after spending the holidays with Mr. Kelley's mother, Mrs. Ethel M. Kelley, 632 N. Third St.

Ancient Greeks tried to ward off colds by inserting a pinch of gold dust in a glass of wine.

Carbon monoxide causes more deaths annually than any other poison.

AL'S MARKET PRINCE ST. GR 5-4797 NEGAUNEE

Two-Holiday Death Toll Over 1,400

CHICAGO (AP) — More than 1,000 persons were killed in traffic accidents during the long New Year's and Christmas holiday periods. The over-all total of accidental deaths was more than 1,400.

The nation's traffic death toll for the four-day New Year's holiday was 382 compared to the record low of 375 for a similar holiday period in 1951-52. The record high since World War II is 409, set in 1956-57.

In addition to the traffic deaths during the New Year's holiday, 84 perished in fires and 132 were killed in miscellaneous accidents, a total of 598.

During the 102-hour Christmas holiday period, traffic fatalities totaled 646, 107 lost their lives in fires and 85 died in miscellaneous accidents, a total of 838.

Carbon monoxide causes more deaths annually than any other poison.

VISTA NOW SHOWING ONE SHOW NIGHTLY AT 7:30 ADM. \$1.25 — \$1.00 — 50c

SPECIAL MATINEE SATURDAY AT 1:30 CHARLTON HESTON SOPHIA LOREN EL CID

BUTLER NOW SHOWING EVES. AT 7 & 9

ELVIS PRESLEY HAL WALLIS' GIRLS! GIRLS! GIRLS! TECHNOLOR

PLUS: CARTOON

ISHPEMING THEATRE TONIGHT THRU SAT. SHOWING ONCE AT 6:35

LADD-BORGNIE THE LAWLESS... THE HUNTER... THE PLUNDERERS... THE BOLD!

THE BADLANDERS SHOWING ONCE AT 8:05

BIG BOLD DRAMA OF LOVE AND CONFLICT! MONTGOMERY CLIFT ELIZABETH TAYLOR EVA MARIE SAINT... RAINBOW COUNTY

Olympic Tryouts On March 9-10

(Additional Ski Story On Page 16)

ISHPEMING — Tryouts for the 1964 Olympic ski jumping championship to be held in Innsbruck, Austria...

Wildcats On Road For Ferris, BU

The Northern Michigan College Wildcats, idle since their lone loss to Aquinas Dec. 17, hope to bounce back into the win column Saturday...

Thomas Kay Wins Gwinn Singles Meet

GWINN — Thomas Kay fired a 694 to win the fifth annual Holiday Handicap Singles bowling tournament held at the Gwinn Inn lanes...

NFL Giants Have \$4,166.85 Each For Consolation

NEW YORK (AP) — With the New York Giants it was "wait until next year" after Sunday's 16-7 defeat by the champion Green Bay Packers...

Trenary Wins 3rd At Cooks

COOKS — Underclassmen showed their growing experience last night as the Trenary Comets downed Cooks' Clippers, 78-61...

Wayne Lusardi and Gary Flynn, a pair of sophomores, paced the point-making as the Comets won their third in seven starts...

Table with 6 columns: Player, FG, FT, REB, PF, PTS. Lists stats for Trenary and Cooks players.

Skiing Danger Over-rated, Pro Skier Contends

LANSING (AP) — The reputed danger in the sport of skiing is over-rated, the Michigan Tourist Council said today.

Moyer, Archer Put 'Best Faces' Forward Saturday

(By The Associated Press) Boxing puts its best faces forward this Saturday night. Denny Moyer, 23, of Portland, Ore., and Joey Archer, 25, of New York...

Cincy Wins 28th; Duke Takes Another; OSU, Illinois, U-M All 8-1

(By The Associated Press) Chalk up another big number for Cincinnati's hot-handed Bearcats—28. The Bearcats, unchallenged as No. 1 in college basketball and gunning for their third straight national championship...

Auburn '5' Keeps Torrid 1960 Pace

AUBURN, Ala. (AP)—Auburn's undefeated basketball Tigers are gunning for a repeat performance of their 1960 feat of leading the nation in both field goal and free throw percentage.

Bears Represented For 1st Time In Players' Group

HOLLYWOOD, Fla. (AP)—The National Football League Players' Association, with all 14 teams represented for the first time in its six-year history...

Pro Possibility



Suddenly sought-after is Ron VanderKelen, Wisconsin quarterback who set a Rose Bowl record by passing for 401 yards (completing 33 of 48 attempts)...

Scribes Suggest 2-Pointers For NFL, Pro-Style Goalposts For College Footballers

NEW YORK (AP)—College football should move the goalposts up to the goal line to encourage field goals and permit unlimited substitution...

Indoor Track Season New Battleground?

NEW YORK (AP)—The U.S. Track and Field Federation, an outgrowth of the bitter amateur sports dispute between the National Collegiate Athletic Association and the Amateur Athletic Union...

Bathgate Ties NHL Record On Fluke Goal

(By The Associated Press) Andy Bathgate wasn't at all concerned that his record-equalling goal was of the so-called "cheap" variety.

Moreland Sparks Piston Rallies, 'Big D' Hits 23

DETROIT (AP) — Jackie Moreland twice sparked Detroit rallies Wednesday night as the Pistons romped to an easy 138-118 National Basketball Association victory over the Cincinnati Royals.

Badger Halfback Staying Behind In Pasadena

PASADENA, Calif. (AP)—One of the Badgers isn't flying back to Wisconsin today. He's Billy Smith, who is recuperating from surgery for a jaw broken during Tuesday's Rose Bowl game.

Pistons' Star Urges City Youth To 'Stand Fast'

DETROIT (AP) — Bailey Howell, star forward for the Detroit Pistons, told a group of church youth to "stand fast in the faith," if they want to get the most out of life.

Father Pens Songs

Howell, whose father is the author of 70 religious songs, said, "In any athletic contest, including basketball, you have to have faith in your teammates, in their ability and in your coach's ability."

NBA BASKETBALL

(By The Associated Press) Wednesday's Results: Boston 135, San Francisco 120; Syracuse 120, St. Louis 95; Detroit 138, Cincinnati 118.

NATIONAL HOCKEY LEAGUE

New York 3, Toronto 2

NEA ALL-PRO TEAM. Advertisement featuring a central image of a football player and surrounding portraits of 20 players from various teams, including Green Bay, Dallas, New York, and Baltimore.

The All-Pro team picked by National Football League voted the NFL's outstanding player of the year, led the offense. Twelve repeaters are noted on the list: QB Y. A. Tittle, End Del Shofner and Safety Jim Patton of the Giants...

ANNUAL MEN'S SUIT AND TOPCOAT SALE IS Now In Progress At JOE HARRINGTON'S THE STORE FOR MEN CORNER 3RD & WASH. ST. MARQUETTE

TERRIFIC! LORD'S ... DRAMATIC JANUARY

SWEEP-OUT!

BUY ON LONG, EASY TERMS SAVE up to 1/2 and MORE!

It Starts Tomorrow! A CLEAN SWEEP OF SAMPLE SUITES ... ODDS AND ENDS, ALL AT SENSATIONAL PRICE CUTS! HURRY!

SWEEP-OUT! LIVING ROOM SUITES!

- | | |
|--|--|
| Regular \$259.95 Kroehler Green Nylon Cover
DAVENPORT & CHAIR ... \$119.95 | Regular \$279.95 Valentine Seaver Matelasse Beige Nylon
THIN ARM SOFA ... \$189.95 |
| Regular \$349.95 Kroehler Nylon Cover
FLORAL SOFA ... \$169.95 | Regular \$399.95 Richardson Nemschoff Beige, Brown, Tan Stripe—Floor Sample
EXTRA LONG SOFA ... \$199.95 |
| Regular \$334.95 Kroehler Brown Nylon, Wide Arm
DAVENPORT & CHAIR ... \$169.95 | Regular \$599.95 Valentine Seaver Green Nylon, Floor Sample
3-PC. SECTIONAL ... \$299.95 |

TABLE BUYS

- | |
|--|
| Reg. \$10.95 Slightly Damaged
BLOND END TABLE ... \$5.88 |
| Reg. \$19.95 Mersman Mahogany
DRUM TABLE ... \$19.88 |
| Reg. \$22.95 Mersman Mahogany
COFFEE TABLE ... \$16.88 |
| Reg. \$22.95 Lawn Blond Round
COFFEE TABLE ... \$16.88 |

CHAIR BUYS

- | |
|---|
| Regular \$49.95 Berlin
Heavy Upholstered Luxury Chair
PLATFORM ROCKERS ... \$29.88 |
| Regular \$39.95 Kroehler Choice Nylon Covers, Swivel
FIRESIDE CHAIRS ... \$23.88 |
| Regular \$39.95 Early American Green or Pumpkin
SWIVEL ROCKERS ... \$34.88 |
| Regular \$39.95 Walnut Arms White Swivel, Plastic
TV CHAIRS ... \$24.88 |
| Regular \$139.95 Floor Sample, Damaged Huge Kroehler, Green Vinyl
CONTOUR CHAIR ... \$67.88 |

.. BEDDING

- | |
|--|
| Sold Everything at \$29.50 King Coil Springwall Quiltress
INNERSPRG. MATTRESS ... \$59.50
<small>Floor Sample Price</small> |
| Simmons Nationally Advertised Deep Sleep
INNERSPRG. MATTRESS ... \$49.50
<small>1st Time Ever In Marquette</small> |
| Regular \$89.95 King Coil Quilted
INNERSPRG. MATTRESS ... \$37.88 |
| Regular \$29.95 Nationally Famous
INNERSPRG. MATTRESS ... \$18.88 |

SWEEP-OUT! BEDROOM SUITES!

- | | |
|---|---|
| Regular \$329.95 Modern Walnut Double Dresser, Chest and Bookcase Bed Kroehler
BEDROOM SUITE ... \$137.88
<small>Floor Sample, Slightly Marred</small> | Regular \$429.95 Mohogany Triple Dresser, Chest on Chest, Panel Bed, 18th Century
BEDROOM SUITE ... \$189.95
<small>Floor Sample, Slightly Scratched</small> |
| Regular \$299.95 Walnut Double Dresser, Chest and Bookcase Bed Brooklyn
BEDROOM SUITE ... \$147.88 | Regular \$449.95 Danish Modern Walnut Double Dresser, Chest, Louvered Panel Bed, Drexel
BEDROOM SUITE ... \$299.95 |
| Regular \$375.00 Danish Modern Walnut Double Dresser, Chest and Panel Bed Kroehler
BEDROOM SUITE ... \$189.95 | Regular \$449.95 French Provincial Cherry Double Dresser, Chest and Panel Bed, Drexel
BEDROOM SUITE ... \$299.95 |

CARPETING

- | |
|--|
| 12' x 8 1/2' Brown 501 Nylon
BIGELOW BROADLOOM ... \$50.00 |
| 12' x 3 1/2' Beige Green 501 Nylon
BIGELOW BROADLOOM ... \$35.00 |
| 12' x 10' Maplewood Brown Wool
BIGELOW BROADLOOM ... \$78.00 |
| 12' x 8 1/2' Corday Green Wool
BIGELOW BROADLOOM ... \$60.00 |

MISCELLANEOUS

- | |
|---|
| Reg. \$19.95 Maitrite
FLOOR LAMP ... \$9.88 |
| One Only Duo-Therm
OIL SPACE HEATER ... \$69.88 |
| Regular \$119.95 Wonderrest
STUDIO LOUNGE ... \$59.95 |
| Use As Twin Beds Or
BUNK BEDS ... \$69.95
<small>2 Springs—2 Beds—2 Mattresses</small> |
| Light Weight Folding
PORTABLE TABLES ... \$9.19 |

APPLIANCES

- | | |
|--|---|
| Regular \$219.95 Westinghouse 12 Cu. Ft.
REFRIGERATOR ... \$169.95 | Regular \$219.95 Westinghouse Wide Oven
30" ELECTRIC RANGE ... \$159.95 |
| Regular \$229.95 New Deluxe Power Shower
G. E. DISHWASHER ... \$189.95 | |

SWEEP-OUT! DINETTES and Dining Room Suites!

- | | |
|---|--|
| Regular \$139.95 Slightly Damaged Oval Table Formica Top
5-PC. DINETTE SET ... \$79.88
<small>Richly Upholstered Beige & White Chairs</small> | Regular \$169.95 Self-Edged Formica Table Light Walnut Wood Grain
5-PC. DINETTE SET ... \$99.88
<small>Plush Green Chairs</small> |
| Regular \$149.95 Deluxe Admiral Formica, Walnut Edge, Mother of Pearl Table
5-PC. DINETTE SET ... \$87.88
<small>Thickly Padded Coral Chairs</small> | Regular \$179.95 Admiral Walnut Wood Grain
5-PC. DINETTE SET ... \$99.95
<small>Smart White Chairs</small> |

ODDS 'N ENDS

- | |
|---|
| ONE LARGE GROUP ASSORTED PICTURES ... \$9.95 |
| 18" Cut
SNO BLOWER ... \$99 |
| Complete with case, battery and earphone
TRANSISTOR RADIO ... \$11.88 |

SWEEP-OUTS

- | |
|--|
| Regular \$429.95 G. E. Wash & Dry
COMB. WASHER-DRYER \$100.00
<small>Floor Sample, Must Go</small> |
| Regular \$329.95 Westinghouse Deluxe 14 Cu. Ft.
UPRIGHT FREEZER ... \$189.88
<small>Available In Colors</small> |
| Regular \$329.95 Westinghouse 13 Cu. Ft.
2 DOOR REFRIGERATOR \$219.88 |

EASY TERMS --- UP TO 36 MONTHS TO PAY

LORD'S OUTFITTING COMPANY

301 SO. FRONT ST.

MARQUETTE

DIAL GA 6-2551

REG. \$209.95 MAHOGANY
CHINA CABINET
From \$99.95

MIRRO-MATIC
FRY PANS
WITH COVER
\$9.13

VALUES TO \$3.00
MEN'S & BOYS'
JACK-KNIVES
\$1.19

VACUUM CLEANER
HOOVER BAGS
Pkg. of 4 88c

WROUGHT IRON
WHITE or BLUE
BAR STOOLS
Reg. 22.95 \$13.50

GENERAL ELEC.
ELECTRIC
KITCHEN CLOCKS
\$3.11

MEN'S ELECTRIC
NORELGO SHAVERS
\$11.88

MAXIMUM LOAD
12 GA., ANY SHOT
SHOTGUN SHELLS
Box \$2.80

2-DOOR
All Metal Wardrobes
6 to 10 \$16.95

AUTO-LITE
SPARK PLUGS
Ea. 59c

WESTINGHOUSE
TV TUBES
Reduced From Reg. Retail Price
50%

Amplex Pre-Tested
PHOTOFLASH FLASH BULBS
Pkg. of 8 89c

5-SHELF
KITCHEN CABINETS
\$15.95

In The Cartons
BRASS
MAGAZINE RAGGS
With Walnut Handle
\$3.38

MAXIMUM LOAD
16 GA., ANY SHOT
SHOTGUN SHELLS
Box \$2.59

RAM 1/4 INCH
ELECTRIC DRILLS
\$8.95

While They Last
Toaster TOASTERS
\$12.95

Slightly Damaged
Blonde
WALNUT BOOKCASE
REG. 39.95
\$19.95

RAM 7' FURY
SKIL-TYPE SAW
\$19.95

Children's Large
DELUXE RED WAGONS
Reg. 15.95 \$9.95

U.S. DIVER'S
Masks-Fins Regulators
50%