

# Cloverland

Upper Peninsula of Michigan

# The Tourist's Paradise



Mark H. Coyne





1960.60.4



ALL ROADS LEAD TO CLOVERLAND, UPPER PENINSULA OF MICHIGAN

Cataloged By  
with MacFarland

**LEGEND**

- STATE PARKS 
- STATE FORESTS 
- NATIONAL FORESTS 
- STATE GAME REFUGE 



PLAN TO SPEND YOUR SUMMER VACATION IN CLOVERLAND WRITE TODAY FOR COMPLETE INFORMATION



## SPEND YOUR VACATION IN CLOVERLAND

### "THE END OF THE TRAIL"



O the mid-west tourist—or, for that matter, the nomad who plans his trip North, through Wisconsin or Lower Michigan—or West, through Minnesota and Wisconsin—Cloverland, the upper peninsula of Michigan sloping off to the shores of Old Superior, is, indeed, the "end of the trail."

But, rather than being the wind-up or the end of the thrill, it is but the beginning, for, in reality, Cloverland is a most pleasant and agreeable surprise to both the uninitiated and the regular visitor.

Flanked on the north by the fresh, green-blue of Superior, and on the south and east by both of the Great Lakes, Michigan and Huron, with the lake region of Wisconsin to the southwest, the Upper Peninsula of Michigan is truly fortunate in its environment.

It has been said, and oft repeated, that the combined attractions of Cloverland, the Upper Peninsula of Michigan, rival in beauty, in interest and in every other feature sought by the tourist, the famous garden spots of California, Florida, Colorado, and New England States and the other widely known, and perhaps more thickly populated summer resorts.

One thing is certain. Cloverland is known not alone for the beauty of its natural attraction—not alone for its splendid roads, its Indian lore and the other interesting features known to every north-bound tourist—but also for the marvelous health-giving quality of its climate. The cool, crisp breezes of Old Superior, sweeping in from the north along the full expanse of Cloverland's northern boundary,—tempered by the warmer winds from Michigan and Huron, combine to give this favored region a climate as moderate, as exhilarating, and as genuinely health-giving as can be found in any section of the country. It is that—added to the natural features—which has brought such a rapidly increasing stream of tourist visitors out of the hot sweltering centers of middle-western industry—out of the dry, parched plains of the west, to breathe deep of the pure, crisp lake breezes; to wander through the shaded, woodland trails and, after all, to LIVE as God intended that we should.

### THE REAL VACATION

You are one of two species of tourists. You are either a "resorter" or a genuine, dyed-in-the-woods, out-door enthusiast, and it is the latter classification for which the upper peninsula of Michigan holds a particular appeal, 'tho, to be sure, we have our Mackinac Island, our Les Cheneaux and our Grand Island—three of the most attractive summer resort regions to be found throughout the country.

But the camper, the hiker, the Izaak Walton, the Daniel Boone, the swimmer and the "canoe-hound" will find his greatest joy—his thrill supreme, along the shores and on the waters of the myriad of placid, inland lakes and streams; on the trail, flanked, on both sides, by tall pines, and snow-white birch; swishing a supple rod from the banks of a swift-flowing stream where trout abound,—or from a rocky cliff, atop a lake teeming with bass, pickerel, perch, and all the rest; then, tracking the elusive grouse, or rabbit, in the fall, when the leaves are down; and finally, crouching behind a fallen log, the better to sight the haughty buck, as he peers over a knoll, head held high, antlers thrown back, and nostrils sniffing the air.

All this awaits the "old-clothes" tourist—the real vacationist, after all.

Of the resorts, with their music and gayety—the glimmering lights, the thickly populated beaches and board walks, we shall tell you later in this booklet.

Finally—when we have told you of the summer attractions of this great northern country, we have but told the half. Cloverland is not without its winters—its drifts piled high; its sharp shrill winds that puff and blow with all the pomp and fury of a truly northern latitude. And it is then that we put away our rods and guns; lay aside the tents and boats—and bring forth, in their place, the skis, the snow-shoes, the ice-boats, the skates—and revel in every sport which has made of St. Moritz in the Alps, a place of wide renown.

So, in truth, it has been said that Cloverland—the Upper Peninsula of Michigan—is, indeed a vest-pocket edition of almost every resort region on the globe, and as such it is rapidly coming to be realized and appreciated by the thousands who go north in the summer, to hunt, to hike, to fish—and in the winter, to enjoy the thrilling invigorating sports which only an extremely northern climate can offer.



EXCELLENT HIGHWAYS—FINE FISHING—BEAUTIFUL PARKS—WITH



Riverside  
Country Club



The Birches of  
Menominee



Hettes Park  
Menominee.



Caldron Falls  
on the Peshtigo.



Bay Shore Drive  
Menominee



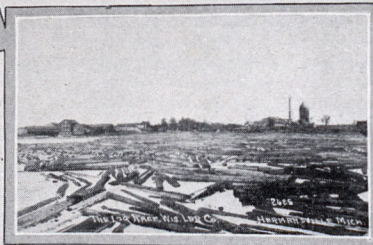
Bathing Beach  
Victory Park  
Menominee.

# Menominee County

Gateway to Cloverland



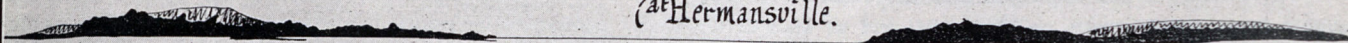
Menominee River  
Sugar Co.



Log Race  
(at Hermansville.



Lloyd  
Mfg. Co.  
Menominee.





MENOMINEE COUNTY



HE first of upper Michigan's counties to tap the tourist stream flowing north over M-15, Menominee County enjoys the full swing of the tourist trade from the earliest comers, in the spring, to the late stragglers, hurrying south to avoid the winter winds. So it is that Menominee county finds itself near the top of the list among the popular tourist sections of Cloverland.

And there is much in Menominee to justify its reputation. Blessed with a climate somewhat warmer, perhaps, than may be found north along the shores of Lake Superior; a variety of scenic effects tapering from broad, rocky shores to dense woodland through which many streams, both big and small, twist and wind about amid the dense verdure overhead; and roads which leave nothing to be desired, Menominee may proudly hold out the welcome hand to the visitor.

Industrially, Menominee leans strongly to agriculture, for here the industrial interests, looking wisely ahead, have turned to the soil as the logical business stabilizer—and they are working energetically to promote and improve that phase of activity. Agriculture, here, is far advanced, a splendid example of energetic, co-operate effort on the part of both the farmer and the "city man"—so-called.

Menominee, the city and county seat, provides a fitting "gate-way" to Cloverland, from Wisconsin, over route 15, for this well-kept, industrious community affords a splendid example of home-building, and home-living. The attractive residences, wide, paved streets and busy atmosphere of Menominee at once attract and impresses.

Menominee is the home of a variety of manufactured products, perhaps the best known of which is the baby carriage, for here is located the Lloyd Manufacturing Company, largest known makers of machine-woven baby carriages and furniture in the world! Here also is located one of the largest beet-sugar factories in the country—and the only one in the upper peninsula of Michigan. Finally, the Prescott company, also located at Menominee, are the makers of some of the largest mining and pipe-line pumps known to modern industry, and their products are distributed throughout the world.

Menominee county, bordering on Green Bay for about forty miles of its coast length; with sixty miles of the sparkling Menominee river for its western boundary, and pierced by a myriad of inland lakes and streams—is, indeed, a "county beautiful," and one which seldom fails to leave a lasting impression with the visitor.

Tourists entering upper Michigan via Menominee county, and over Route 15, find an interesting diversion, on the return trip, on Route 91, better known to the tourist-visitors as the "Lake Shore Drive."

The drive skirts the shore of Lake Michigan for considerable of the distance, and among the most interesting features of the route are the attractive county parks which the tourist encounters. Menominee county is justly proud of its "Lake Shore Drive" and the county parks.

<p><b>GOSLING'S</b> Best Place to Eat DANCING, MUSIC, 250 CAP. Telephone 165 MENOMINEE, MICH.</p>	<p><b>Hotel Menominee</b> European Plan W. S. CARPENTER, Proprietor ED. J. WOOD, Manager On the shores of beautiful Green Bay. MENOMINEE, MICH. Cuisine Unexcelled. Dining Room.</p>	<p><b>Winkle-Madden Drug Co.</b> KODAKS — FILMS — SUPPLIES Information Bureau Opp. Victory Beach, Sheridan Rd. MENOMINEE MICH. M-15 and 91</p>
<p><b>BIG R. LUNCH</b> Everything for TOURISTS' REFRESHMENTS. Information Here. POWERS—M-15 MICH.</p>		<p><b>Hermansville Drug Store</b> ICE CREAM, SMOKERS' WANTS, FILMS, FLASHLIGHTS, ETC. HERMANSVILLE, MICH. M-12</p>



## THE LAST WISCONSIN CITY ON THE SHERIDAN ROAD

### On M-15 WHY MARINETTE On Wis.-15 and 64

Because the city is prepared with well equipped tourists' camp especially conducted with the view to welcome the automobile traveler.

Every place of business is an information bureau. The big store on Dunlap avenue, Lauerman Bros.' Dept. Store, provides an especially trained personell to supervise the information department. This service is also conspicuous at the popular Hotel Marinette, on Dunlap square.

Among the many features to be found at the Marinette tourists' camp are shower baths, electric lights, heaters, running hot and cold water and stove cooking accommodations.

Abundant of good fishing spots are plentiful and easily reached from this point, in addition to wonderful in-land and out-land lake resorts and properties, with miles upon miles of the best of auto roads. That's why you should come to Marinette, Wis.

### 27 REASONS FOR COMING TO MARINETTE

**ROADS**—Route 15, concrete; Route 64, macadam; improved county highways.

**FISHING**—Rainbow and trout streams within short distance.

**LAKES**—Teeming with bass and pickerel.

**BATHING AND BOATING**—All along lake shores.

**TRADING CENTER**—Shop here — special attractions. Best of stores — where shopping is a pleasure and a saving.

**TOURIST CAMPS**—Marinette has the best camp in the state. Every town in county has one.

**GOLF**—Beautiful nine-hole course.

**TENNIS**—Public courts.

**ELECTRIC POWER**—Many thousand horsepower available at reasonable rates.

**HARBOR**—Where water meets rail. Ann Arbor carferry service to Frankfort, Michigan, daily.

**INDUSTRIES**—Lumber, paper, knitting mills, piano, glove, bag factories, paper specialties, mattresses, granite works, radio, etc.

**AGRICULTURE**—Ideal farming and dairy conditions.

**CHURCHES**—All denominations and languages.

**SCHOOLS**—Public and parochial. Public schools on ac-

credited list of higher institutions.

**ROTARY AND KIWANIS**—Rotary meets Monday and Kiwanis on Tuesday.

**CLUB HOUSES**—Maintained by Masons, Elks and Knights of Columbus.

**THREE THEATRES**—Matinee daily.

**AMUSEMENT PARK**—Dance every night at Bayshore Park.

**INDUSTRIAL SITE**—Rail and boat service all year round.

**HOTELS**—And good restaurants. Dance every Tuesday night at Hotel Marinette.

**SAND BEACH**—Seven miles south of city.

**BANKS**—Total resources, \$6,158,475.54.

**MOTORING**—For miles along beautiful Menominee River and Green Bay, on improved highways.

**ASSEMBLY GROUNDS**—Lake Lundgren. Ideal for Boy Scouts, Y. M. C. A. or Young Folks' Retreats.

**LAKE FRONTAGE**—Summer home sites.

**GARAGES**—Excellent service.

**RESORTS**—Pine Beach Club — Dining Hall and Dormitory.

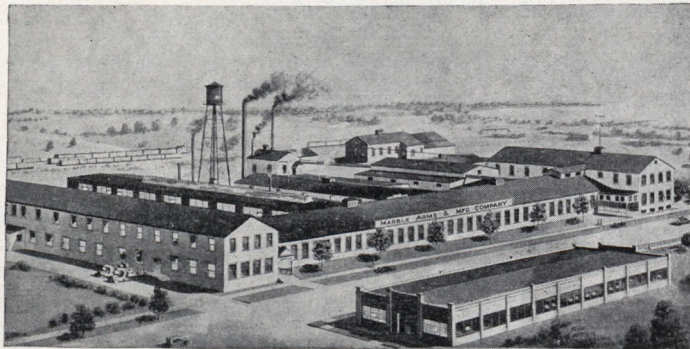
### Come to HOTEL MARINETTE and Try

Our Light Lunches, Soda Fountain, Information Bureau, Ladies' Rest Rooms.

Every service offered — Our aim to satisfy.

A Home — "Away from Home"

Write MARINETTE HOTEL (on Wis. 64 and 14 and M-15), Marinette, Wis.



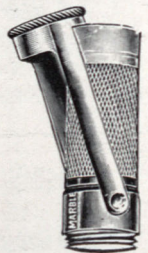
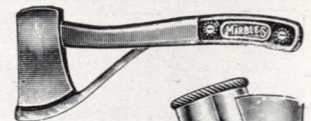
MARBLE ARMS & MANUFACTURING COMPANY,  
297 DELTA AVE., GLADSTONE, MICH.

TRADE  
**MARBLE'S**  
MADE

**OUTING EQUIPMENT**

is needed to make your trip more enjoyable.

Send for free catalog in colors of many articles for the tourist, camper, fisherman and hunter, such as Safety Pocket Axes, Hunting Knives, Waterproof Matchbox, Compasses, Cleaning Rods and Cleaners, Gun Sights, Game Getter Gun, etc. All the celebrated Marble Equipment is made in this factory. Come and see us.





## VISIT CLOVERLAND'S STATE PARKS

### CLOVERLAND'S STATE PARKS



EVEN state parks have been established in the Upper Peninsula of Michigan. During the past year an improvement program for these attractive sites has been put into effect.

In each case, the parks are being made ready to accommodate the tourist-camper, and are being designated as free camp sites, in addition to those established by the various communities. The parks have been chosen for their natural beauty; their accessibility to the main highway, and the opportunity afforded to effect such improvements as to make of them and preserve them as spots of unusual scenic beauty.

Following is a description of the parks, as submitted by the Michigan State Conservation Commission in a recent report:

**FORT WILKINS STATE PARK** lies between Lake Superior and Lake Fanny Hoe in Keweenaw County. The Fort is one mile east of terminus of Trunk Line No. 15 at Copper Harbor. The park now contains fifty-two acres of land. Negotiations are in process for additional area.

The fort proper was constituted of some twenty-four buildings placed in rectangular position. A number of these were wrecked prior to its becoming a State Park, but of the main buildings, sufficient have been restored to maintain the effect of rectangular disposition and the "spirit" of the Fort when abandoned in 1863. These buildings are enclosed on the south and west by Lake Fanny Hoe and its outlet. On the north and east a formidable stockade was erected to obstruct hostile Indians; this stockade has been completely restored.

By virtue of the peculiar location of this Park, persons visiting Fort Wilkins go through the heart of the Copper Country, see the beautiful peninsula of Keweenaw, and are taken into the very midst of Great Lake Superior. This Great Lake in itself contains numberless things of interest and possesses a spirit that can be realized only by actual visit. The Park is open for camping and is equipped for this purpose.

**MARQUETTE STATE PARK** is accessible by Trunk Line No. 15 and is located three and one-half miles west of the city of Marquette. Service roads from trunk line have been installed, making the Park available.

This site contains one hundred thirty-three acres, part of which is highly interesting because of its ruggedness. Particularly is the Park interesting for views to be obtained from Bishop's Hill, the highest point in the Park and which soars above all others in this section. From its top the entire city of Marquette with its varied back-ground can be clearly observed; back of it Lake Superior deep green and with rock and wooded shores. On her are steaming great and numerous ore boats. In other directions abrupt hills, almost mountains, continue making the relief from the point of observation most complete. This sight alone for five minutes will repay for long and tiresome drives.

In the Park proper are unsurpassed camp sites, protected from the winds and shaded well by birches, maples, beech, balsams and pines. With this are the general equipments and developments suitable for tourists and campers, all of which will be extended and increased in the near future.

**BRIMLEY STATE PARK** can be reached from Trunk Line M-25, being 1½ miles from the Village of Brimley and fifteen miles from the Soo, in Chippewa County. The site here contains some fifty-two acres of land on White Fish Bay, with excellent sand beach. Ideal bathing, fishing and boating privileges are offered at this Park. Bath houses have been provided and other general equipment and improvements for the visitors' convenience.

White Fish Bay can be termed the source of St. Mary's River. It is at this point where all boats sailing Lake Superior "line up" for passing through the locks at the Soo. During the season there is rarely a moment when boats cannot be observed. The writer has counted twenty at one time when standing in the Park. Such marine parade as can be observed from this Park is seen similarly in no other region. The Park enables the people to enjoy these interesting recreational features.

**BARAGA STATE PARK** is one mile out of the Village of Baraga on Trunk Line 15. It is further situated on the shore of Keweenaw Bay. The site contains thirty-two acres of land made accessible by service roads and offers some most attractive camp sites.

This Park is situated in the heart of the lumber industry and offers scenes and attractions that can be had only from the region of the Keweenaw Bay. It is developed, with the general equipment and conveniences for campers and others wishing to enjoy the privileges of the outdoors.

**STRAITS STATE PARK** is the park of most acquirement in the Upper Peninsula, consisting of 32 acres, located on the famous Mackinac Straits, directly opposite the city of Mackinaw and about two miles west of the city of St. Ignace. Approximately 1,800 feet of the site abuts the water. This land was purchased by public spirited citizens of St. Ignace in co-operation with the Mackinac County Board of Supervisors. It is partially developed and definite plans for the improvement of this park, this year, are being made.

**JOHN WALTER WELLS STATE PARK** is one quarter of a mile from the village of Cedar River, and 26 miles from Menominee, in Menominee County.

The site is accessible from Trunk lines M-91 and M-15 and consists of 467 acres, with two and one-half miles of frontage on Green Bay. The shore consists of sand and rock beach. About one mile of the total is of pure sand and highly desirable for bathing. The remainder is rugged and rocky.

This property came to the State gratis from the J. W. Wells estate and the County of Menominee as a memorial to the late John Walter Wells and Isabella, his wife. It was selected because of its good location and the stand of timber it yet contains. The tract is undoubtedly the finest on Green Bay between Menominee and Escanaba. Plans for the improvement of this park this year are being made.

**DODGE BROS. MUNUSKONG BAY STATE PARK** consists of 2,440 acres on Munuskong Bay, Chippewa County. The park is 2½ miles east of Trunk Lines M-12 and M-48 and is accessible by county road. The area contains a complete cover of trees, shrubs and plants highly desirable for wild life. It also contains a good stand of trees very useful for park purposes.

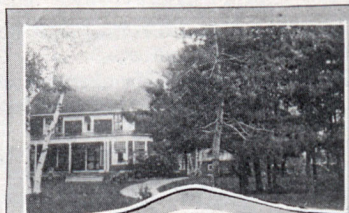
Through the park flows the Munuskong River, which serves well for boating and fishing. There are many desirable camp sites along the five miles frontage on the Bay. This is the eleventh site given by the Dodge Brothers Estate for park purposes and is a very desirable and well located area. This park, although open to the public, has not the camping equipment usually provided.



THE TALL, TREE-COVERED CLIFFS OF FAYETTE WILL



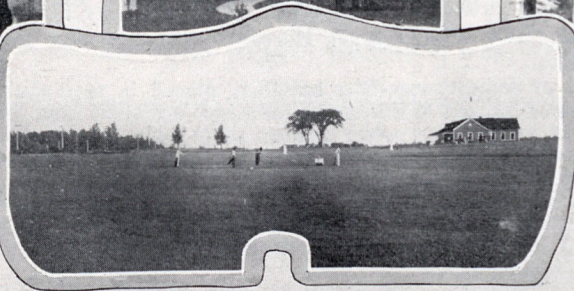
A bit of  
Delta's Coast



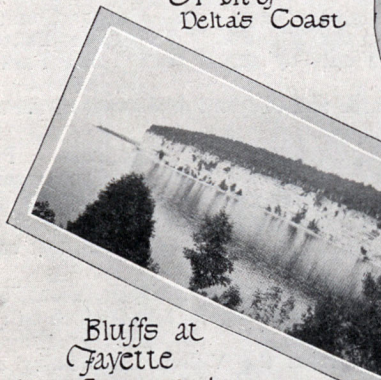
Typical of  
Gladstone Mich.



The Pines of Delta  
near Escanaba



Escanaba Golf Grounds



Bluffs at  
Fayette  
Garden Peninsula



Ludington Park Escanaba



Municipal "Slide"  
Escanaba



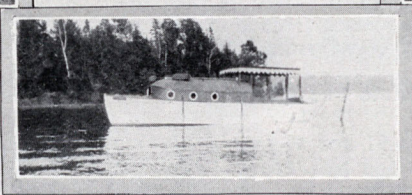
Foliage and two fair  
intruders

# Delta County

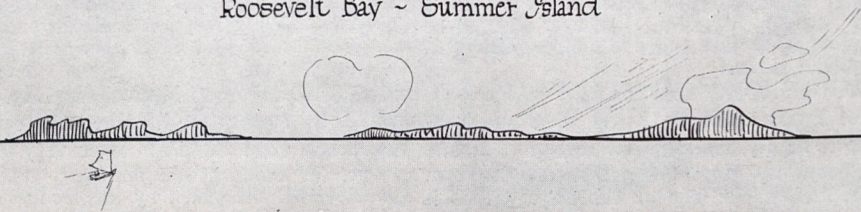
Where industry  
agriculture and scenic  
beauty lure the tourist



Near Bush's Bay



Roosevelt Bay - Summer Island





COMPLETELY SATISFY YOUR LOVE OF THE BEAUTIFUL

DELTA COUNTY



It is a singular truth that Delta county occupies a unique place among the fifteen counties of the Upper Peninsula of Michigan, for, located about midway along the southern extremity of the peninsula, it becomes, at once, the hub, or focal point, for the "Sunny Side of Cloverland." A glance at the map will explain it. The highest point of land, between Lakes Superior and Michigan, is about 1,000 feet above sea level, and the territories to the north and south of that line slope, gently, to their respective waters' edge. It so occurs that the lands to the south of that line have a full sweep of sun exposure—hence "The Sunny Side of Cloverland"—and Delta is right in the middle of it.

It is not surprising, perhaps, that many tourists to Cloverland find, in Delta, all that they have sought, for it combines almost every attraction which makes up the complete and thoroughly enjoyable vacation. Although most of upper Michigan's counties are blessed with an abundance of inland waters, Delta is particularly fortunate in this respect, for the lakes and streams of this district are known to the tourist far and wide.

Escanaba is the county seat of Delta, and here is a community which, like the county, stands out among its sister communities in the peninsula, for Escanaba has, indeed, "come out of the rut." Blessed with a city government which thinks and acts, and a spirit among its business interests that co-operate and work for the best interests of the community, Escanaba is getting ahead rapidly, and is destined to become one of the leading communities in the district.

Delta county is a further delight to the visitor by reason of the many fascinating side-routes afforded there, not the least of which is the trip to Fayette and the Garden Peninsula, this narrow stretch of natural beauty, jutting out into Lake Michigan, holds a wealth of interest and attraction for the visitor. The great, white, tree-topped cliffs of Fayette alone are well worth a day's trip.

Then there is the Sturgeon River, the Haymeadows, Northland, Foster City—and the wide expanse of rich, farming country throughout the district—all of which affords a wide variety of both scenic effect and industrial interest.

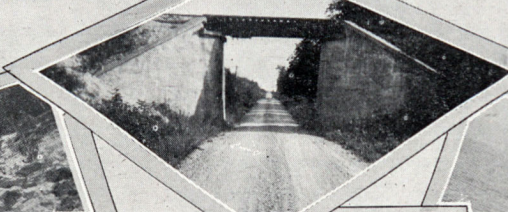
Delta is distinct, and, being so, it finds a ready and willing audience in the summer visitor.

<p><b>Escanaba Motor Co.</b> Near Delta Hotel</p> <p><b>FIRE-PROOF STORAGE</b></p> <p>Open Day and Night</p> <p>Tel. 599 for Service Car</p> <p>ESCANABA—M-12-15-91      MICH.</p>	<p><b>Escanaba</b> The Hub of Upper Michigan</p> <p>Excellent roads radiating in all directions; a central location; good hotels; a modern tourist camp; beautiful parks; a golf course; bathing facilities and metropolitan features of every kind combine to make</p> <p><b>Escanaba</b> the logical tourist headquarters for the Upper Peninsula. We shall always be pleased to serve you.</p> <p>Escanaba Chamber of Commerce.</p>	<p><b>Delta Hotel</b></p> <p>European, Modern, Fireproof</p> <p>COFFEE SHOP OPEN DAY AND NIGHT</p> <p>—Rates Reasonable—</p> <p>ESCANABA,                      MICHIGAN</p>
<p><b>BEAL</b> MOTOR SERVICE — STORAGE</p> <p>Repairs — Supplies on all cars Opp. Lundington Hotel—Open always Tel. 1008 — Prompt Service.</p> <p>ESCANABA, M-12-15-91.      MICH.</p>	<p><b>QUALITY GAS AND OILS</b></p> <p>Stations at all Central Points in Delta County.</p> <p>Every Quality Station offers</p> <p>Ladies' Rest Room and Information Bureau.</p> <p><b>HANSEN &amp; JENSEN</b>                      <b>ESCANABA, MICH.</b></p>	



AHOY FOR GRAND ISLAND—AND TO MISS IT

Where "South Shore"  
crosses - M-25



Pictured Rocks  
Indian Head Point  
near  
Munising



North Point  
Grand Island  
Munising



Wagner Falls

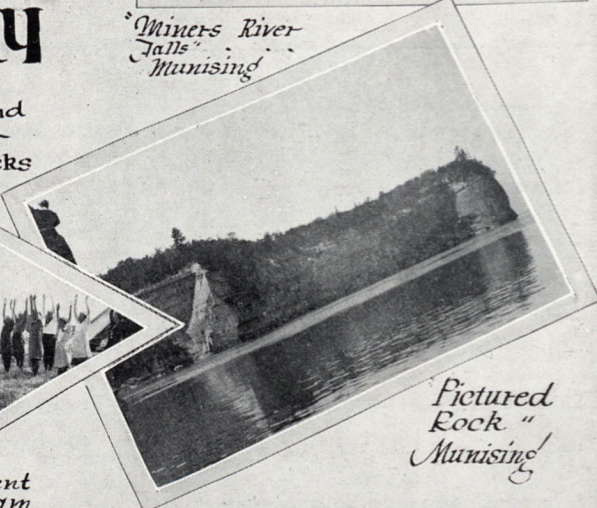
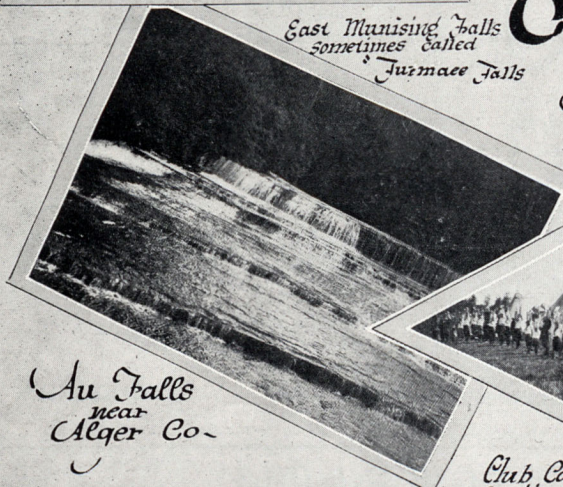


# Alger County

East Munising Falls  
sometimes called  
Turmaes Falls

Miners River  
Falls  
Munising

Munising  
Grand Island  
and the  
pictured Rocks



Au Falls  
near  
Alger Co.

Pictured  
Rock "  
Munising



Club Camp Experiment  
Station - - Chatham





IS TO DEPRIVE YOURSELF OF A RARE THRILL

ALGER COUNTY



IMMEDIATELY, when we think of Alger county, we think of "Grand Island," for perhaps no county of the Upper Peninsula of Michigan is as richly favored as Alger, in boasting such a distinct attraction within its territorial limits.

And at that, the portion of Alger county included in the mainland is not without its attractions. Here, particularly, come thousands of ambitious nimrods, in the fall, to chase the whirring grouse, or to "pop" the bounding rabbit—and, later, to stalk the swift and wary buck. For Alger county, with its heavy forest growth—its streams and lakes, and the countless woodland trails which cross and re-cross the tickest and deepest of its heavy timber lands, is a veritable paradise for the hunting enthusiast.

Munising is the county seat of Alger—and Munising, though a comparatively small community, at once becomes famous as the "hopping off place" for Grand Island. Tho let it be said that Munising, with its mills and factories, is not without its industrial significance and importance.

— But now to Grand Island. Regular ferry service is maintained both from the Beach Inn, Munising's attractive summer hotel, and from the regular passenger dock.

Grand Island is familiarly called the "Pride of the North Country," for, in truth, it is recognized as the most beautiful, natural summer resort to be found throughout the North American continent.

Covered, almost throughout, with a rich, verdant growth of natural timber, with here and there a clear, dazzling patch of crystal water; pierced by winding shaded, grass-carpeted drives and trails, and edged with a coast-line which changes, abruptly, from sharp, jagged cliffs, to softy, sandy beach, Grand Island presents to the visitor a picture as perfect, as complete and as thoroughly enjoyable as the human heart might crave.

You will remember Alger county—for its Grand Island. To miss it is to leave, within your vacation, a huge void, which Grand Island alone can fill.

Ranking next, perhaps, to Grand Island—for natural attraction, come Alger county's Pictured Rocks. This fascinating rock formation is found east of Munising, along the shore of Lake Superior. Pictured Rocks, rising 250 feet above the surface of the lake, and extending for a distance of from ten to twelve miles, is a never failing source of interest to the tourist visitor.

And there are the Au Train Falls.—none the less attractive and none the less interesting and fascinating to the visitor. In fact Au Train Falls, rippling gently over terraces of glittering, purple stone, is a sight never to be forgotten.

To the visitor who is in any way interested in the products of the soil, the State Experiment Farm, at Chatham, in Alger county, holds a wealth of constructive interest. Here, amid normal, farming conditions, the various plant and animal products, best known to the northern latitudes, are studied carefully, each year.

**Wahkonsa Hotel**

The Very Best Service.

One Block from Beach.

A La Carte Dining Room.

Ask here for Side Drive information.

**A. E. Bowman**

Tourists' Supplies

SHINGLETON, MICH.

**Farrell's Drug Store**

THE REXALL STORE

KODAKS FILMS

**BEACH INN**

MUNISING'S LEADING HOTEL

Just opposite Grand Island, and near the famous Pictured Rocks. Over-

looking Munising Bay on

Lake Superior.

American Plan. Rates from \$3.50 a day up.

MUNISING, MICHIGAN

**Look for These Signs**



**MUNISING, MICHIGAN.**

"The Naples of America"

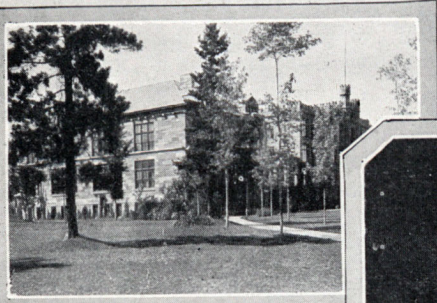
Ex-Governor Chase Osborn of Michigan so christened Munising. Standing on the deck of a steamer as it entered the harbor one morning, and beholding the wonderful hills at the foot of which the town is located, he said that nothing he had elsewhere seen, in America, or abroad, so nearly approached the view he had enjoyed of the famous Italian resort. Banked by the green of the hills and hugging the shores of the greatest of inland seas, it is said that the city's natural beauties do equal those of Naples.

For Further Information Address

**Munising Development Club**  
MUNISING MICHIGAN



HERE'S A DAZZLING ARRAY OF WOODS, WATERS AND

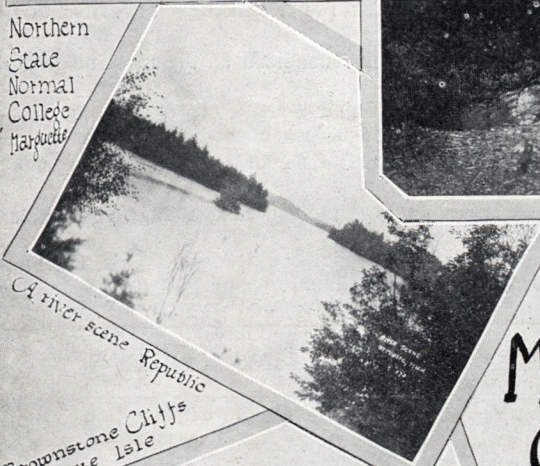


Northern State Normal College Marquette

The Cove Presque Isle



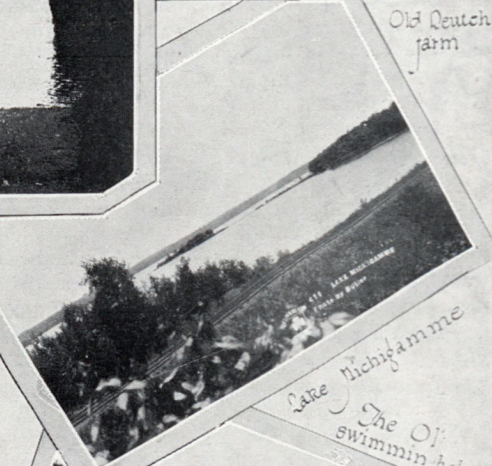
Old Dutch farm



A river scene Republic

# Marquette County

Where Lake Superior breezes blow



Lake Michigan The Old swimmin' hole



Brownstone Cliffs Presque Isle



Court House Marquette



C-S-I docks largest all-steel and cement docks in the world - Marquette



Typical of Presque Isle -



## MARQUETTE COUNTY



EW districts throughout the Upper Peninsula of Michigan enjoy as wide a variety of truly interesting features— industrial, scenic and historic—as Marquette County. Enjoying a full sweep of Superior, along its northern boundary, and edged, on the north-west, south and south-east by an almost solid expanse of dense, virgin timber, Marquette perches, like a radiant gem, amidst the tree-covered hills which slope directly to the water's edge.

Industrially, Marquette county, like many other districts throughout the peninsula, thrives largely on its timber and minerals, for here are located some of the best and most densely covered timber tracts, as well as the most productive iron mines to be found throughout the Upper Peninsula of Michigan.

This county, too, finds its tide of tourist visitors ever increasing, for the excellent condition of the highways; its abundance of hidden trails, the lakes and streams, where boating, bathing and fishing all are readily accessible, contribute to make of this section a most ideal vacation objective.

Marquette, the city and county seat, is primarily, a port town, though manufacturing plays an important part in its industrial activity. Old Marquette—rich in Indian history and with a wealth of natural scenic effect on every hand, is a favorite stop-over for the summer visitor.

Probably one of the most attractive features of Marquette county, scenically, is Presque Isle, located three miles north-west of the city, and jutting out into Lake Superior, towards the Canadian shore. Presque Isle is just what its name implies—almost an island, and accessible from the mainland by an excellent stretch of highway, and by the line of the Marquette street railway. Presque Isle,—with its shaded drives, its high, brownstone cliffs, its tall, stout pines and slender birches, together with its beaches, the bathing and all the rest attracts thousands of summer visitors to its shores. Presque Isle is, without a doubt, the most attractive natural park of its size to be found throughout the district, and this has been repeatedly vouched for by the thousands of summer visitors who have seen and been thrilled by its natural attractions.

This county, too, with its deep-shafted mines, its humming saw-mills and the variety of its manufacturing establishments, affords a wealth of practical interest for the industrially inclined. When you have explored Marquette county—visited its mines, its mills and its factories; paddled its lakes; basked on its sandy shores; waded its streams; “hiked” its foot-paths and idled along its incomparable roads, you have experienced much that is typical of Cloverland.

Incidentally, Marquette is a favorite resort for the “hay-feverites.” “To sneeze or not to sneeze—aye, that’s the question,” and the hay-fever colonists of Marquette county tell us that it is “not to sneeze.”

### Cloverland Auto Co.

Established 1912.

Marquette, Michigan.

Agents for Packard and Buick Cars.

The largest and best equipped garage in Upper Michigan. We guarantee good service.

Tel. 600 - 601

MARQUETTE, MICH.

### Marquette Hotel

Best Service — Finest Scenery

Modern Rooms

Vacation Center for All.

JOHN LEWIS

MARQUETTE, - MICH.

### Stafford Drug Co.

Authorized Eastman Agency.

Expert Developing and Printing.

THE REXALL STORE.

Best in Drug Service.

Opp. D. S. S. & A. Pass. Depot.

Tel. 137 - 138

MARQUETTE, MICH.







## NAMED AFTER FATHER BARAGA

### BARAGA COUNTY



IVIDLY typical of the hardships and struggle which marked the earliest civilization in the upper peninsula of Michigan is Baraga County, the gate-way to upper Michigan's far-famed "copper country," and one of the most picturesque districts to be found anywhere throughout the country.

History tells us that as early as 1838 one Peter Crebassa, an agent for the American Fur Trading company, while traveling for his company, came upon what is now the site of L'Anse, the county seat of Baraga county, and that he established here a trading post, on the spot where the Methodist Mission now stands. There followed, then, years of bartering with the Indians—years in which warfare was rife and during which many settlers came, fought their way through succeeding periods of hardship, and passed on.

Baraga county, today, boasts the only Indian reservation to be found throughout the upper peninsula of Michigan. Here, near the village of L'Anse, the fast-fading remnants of the once powerful tribes now live in their gay-colored shacks, eking out the merest living with their small fishing boats, and coaxing, from the soil, the barest necessities of life.

Much of the earliest history of Baraga county centers about the name and work of Bishop Frederick Baraga, who, in the spring of 1845, just seven years after the establishment of the first trading post here, came, first, to visit the post, and, later in the same year, established at Baraga the first mission.

These and succeeding events, coupled with the fact that many of the most powerful Indian tribes of the region held conclave along these shores, have left their mark, and a most picturesque atmosphere, about the Baraga district. So it is that tourists to upper Michigan find much of dramatic interest in the old Indian cemeteries, with their queer shack-shaped shelters covering each grave; the old Indian reservation and the memoirs of the oldest white settlers in the Baraga district.

Baraga county is pierced by M-15, the direct, north-westerly route through the famous Copper Country of upper Michigan.

Like almost every other district throughout the peninsula, Baraga county boasts its favorite deer-trails; the thick, virgin forest; the lakes, cottages and fishing streams—the best of which are readily accessible and likewise popular with the tourist.

### A FORD TOWN

Today Baraga county is astir with a new development—a mill and body plant of the Ford Motor Company, recently established there and which has transformed the quiet little lumbering town from a typical lumbering settlement to a thriving, busy village. Every day sees its tide of new-comers steadily increasing, and today, at L'Anse, where the Ford company has established its plant, there is in progress a marked and almost startling industrial and civic growth.

Indeed—Baraga is looking up—industrially and in every other way.

### WHY BARAGA

Appeals to the Thousands Who Have Visited.

Because of Its Delightful Situation on the Southern Shores of Beautiful  
Keweenaw Bay

(Which is part of Lake Superior)

ITS CLOSE PROXIMITY TO THE FAMOUS BARAGA STATE PARK

(See Map.) Here is where the tourist or visitor finds

THE BEST OF FISHING, SWIMMING, BOATING AND HUNTING

and free Camp Sites unexcelled anywhere.

HAY FEVER IS QUICKLY RELIEVED AND SOMETIMES CURED ENTIRELY IN  
THIS EXHILARATING ATMOSPHERE.

Every business interest is an Information Bureau and extends  
A CORDIAL WELCOME TO THE TOURIST.

Ask about Indian Mission, State Park and Camp Sites.

Write **BARAGA CHAMBER OF COMMERCE**, Baraga, Mich.

#### Hickey Mctl. Co.

Tourists' Headquarters

—Ask Us—

J. HICKEY, L'Anse, Mich.

#### L'Anse Oil Co.

Sinclair Products

Complete Tourists' Service

On M-15, M-35

A. VILLANELLI &  
CONTARDI CO.

#### L'Anse Garage

Best Service on all Cars

in Baraga County.

BOIVIN BROS., L'Anse, Mich.

#### Carlson's Garage

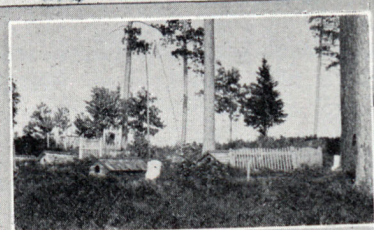
Day and Night Service

on M-12

MICHIGAMME, MICH.



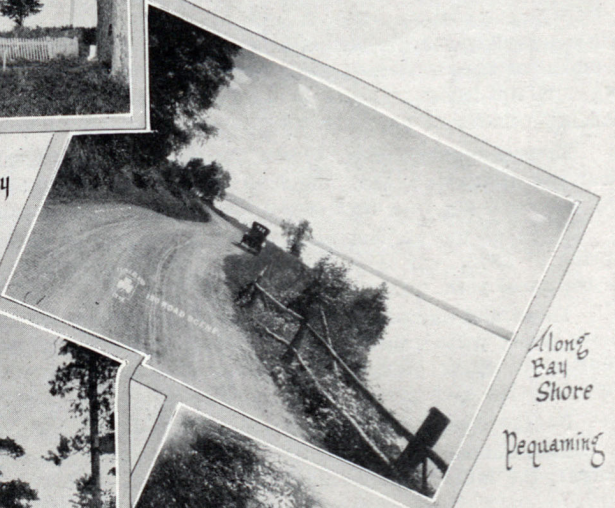
SEE THE OLD MISSION ON KEWEENAW BAY



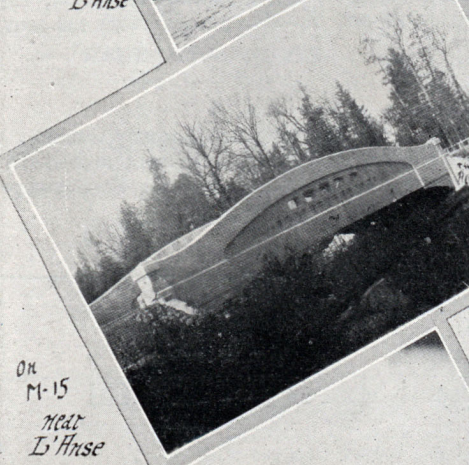
Indian Cemetery  
near L'Anse



River Scene  
near L'Anse



Along Bay Shore  
Pequaming



On M-15  
near L'Anse



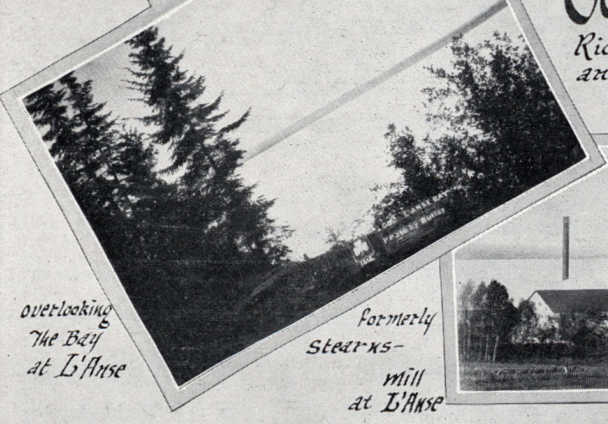
Rugged Beauty  
Near Baraga



Charming Bit of Baraga

# Baraga County

Rich in Indian Lore  
and Scenic Beauty

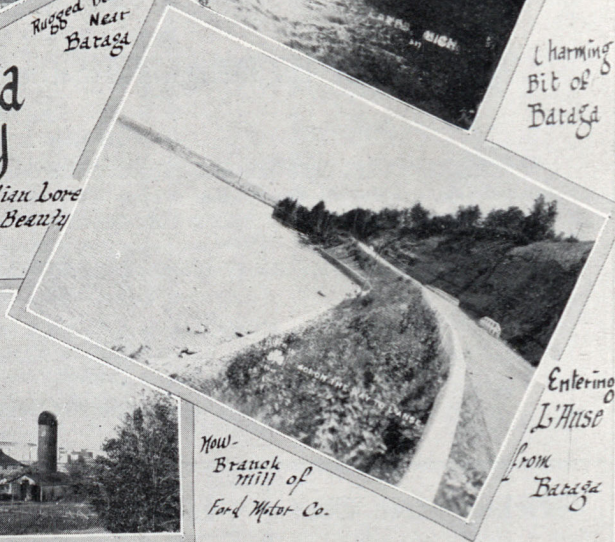


overlooking  
The Bay  
at L'Anse

Formerly  
Stearns-  
mill  
at L'Anse



New-  
Branch  
mill of  
Ford Motor Co.



Entering  
L'Anse  
from  
Baraga





WHERE COPPER IS KING — AND THE MINES ARE

HOUGHTON COUNTY



NE writer has said: "In attempting to describe upper Michigan's famous 'copper country' one is fraught with much the same feeling you might have if you were given carte blanche to walk into the treasure room of an Indian prince, and to select therefrom the finest and rarest of jewels."

It is, indeed, a difficult task to select, from the many and varied attractions of the "Copper Country,"—and particularly Houghton County, since that is the heart of this great region—any one feature which might have a special or particular appeal to the visitor.

Houghton County, about which centers most of the romantic and picturesque history of upper Michigan's "Copper Country," presents, perhaps, an attraction which no other district of the peninsula may offer—its deep, rich copper mines. Here, in Houghton County, are located the copper-producing properties which have played such a prominent part in the world's mineral market for the past four decades. Here you will find also the deepest mines in the world, for shafts of a known depth of 14,000 feet have been driven into the heart of Houghton County, that its untold wealth of raw copper might be brought to the surface.

Perhaps because of its prominence as a rich, productive mining center, there is established here, also, the Michigan College of Mines, rated as one of the three leading mining schools in the world, and an institution whose capacity has never yet kept up with the list of waiting applicants. Many world-famed mining engineers, now occupying positions of prominence in the mining world, trace their earliest training to the Michigan College of Mines, for the practical experience, offered by both the iron and copper mines of the upper Michigan region, brings to the mining students a wealth of intimate contact with his chosen work.

Houghton County is dotted with a number of mining localities, but the three towns of Houghton, Hancock and Calumet are the leading communities of the district.

Indeed, Houghton County—with its splendid camp-sites; its incomparable scenery; the mines; the mills; the roads and the same clear, brisk climate which glorifies the entire northern coast-line of Cloverland, along the southern shore of Superior—leaves nothing to be desired. For here the tourist finds the thrill supreme and sublime—and here, too, he comes directly to the gateway of a region still more enchanting, still more beautiful and one which the "Cloverlander" points to with a pride both just and pompous. We are coming now to Keweenaw—grand old Keweenaw.

<p>Established 1880</p> <p><b>Paine, Webber &amp; Company</b></p> <p>Members</p> <p>New York Stock Exchange Boston Stock Exchange Chicago Stock Exchange New York Cotton Exchange Detroit Stock Exchange Hartford Stock Exchange Chicago Board of Trade</p> <p>Tourists Information Bureau Use Our Rest Room On M-15</p> <p>HOUGHTON - MICHIGAN</p>	<p>— HANCOCK —</p> <p><b>SCOTT HOTEL</b></p> <p>European Plan—Good Dining Room</p> <p>90 Rooms—45 With Bath</p> <p>Hot and Cold Water in All Rooms</p> <p>Free Parking</p> <p>Home of Tourists</p> <p>Rates, \$1.50 and Up</p> <p>Opposite Bridge</p> <p>HANCOCK, MICHIGAN</p>	<p><b>THE LAKE BREEZE HOTEL</b></p> <p>On the Shore of Lake Superior</p> <p>Special Attention to Tourists</p> <p>Fresh Lake Superior Trout and Whitefish Dinners a Specialty</p> <p>The End of M-15 where Hay Fever is Unknown</p> <p>EAGLE HARBOR, MICH.</p>
<p>Houghton and Calumet Best Places To Eat</p> <p>Soda Fountains — Music Always</p> <p><b>Nelson's Dairy Lunch</b></p> <p>HOUGHTON and CALUMET, MICH.</p>	<p>WE ARE Equipped to serve you in first class manner</p> <p><b>MR. TOURIST</b></p> <p><b>MICHIGAN AUTO CO.</b></p> <p>Tel. 2535 416-420 Sixth St. CALUMET, MICH.</p>	<p><b>COPPER SOUVENIRS</b></p> <p>If it's made of copper, we have it</p> <p><b>LAVIN JEWELRY CO.</b></p> <p>CALUMET - MICHIGAN</p>



THE DEEPEST IN THE WORLD, AND THE RICHEST



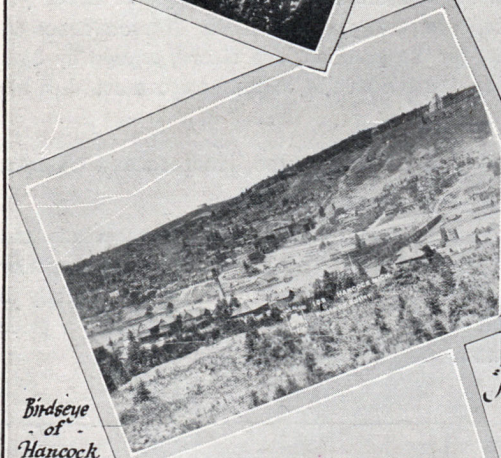
*Bit of shore-line near Houghton*



*Night on Portage Lake*



*Tourist camp site Houghton*



*Birdseye of Hancock*



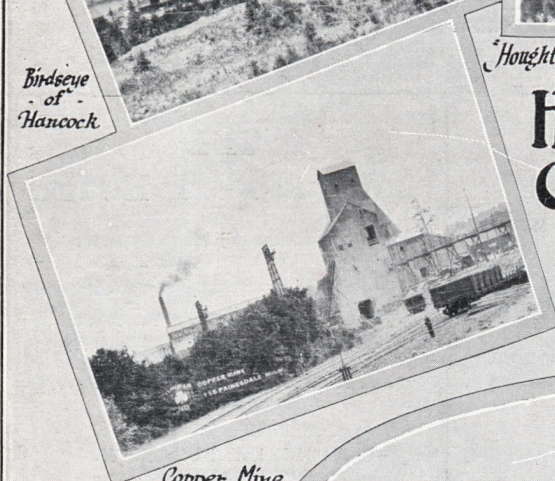
*Houghton Falls near Houghton*



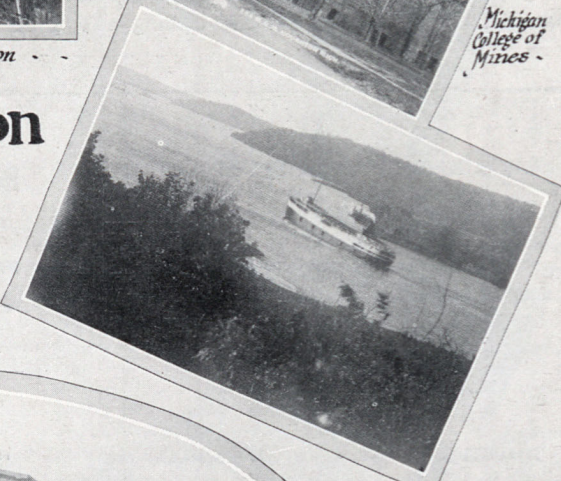
*Michigan College of Mines*

# Houghton County

Gateway to the copper country



*Copper Mine near Painesdale*



*Entry to Portage Canal*



*Houghton Co. Club*



**USE OUR FREE CAMP SITES**

But let us hesitate, just a moment, before passing on, to make note of a few of the lasting impressions that Houghton County leaves with us. First—perhaps—the climate. Houghton County located directly on the shores of Superior, but with an altitude which cuts the moisture from the air and creates a climate which nature has tempered to perfection, is known, far and wide, as a favored spot among the hay-fever sufferers.

Houghton also boasts of one of the most attractive tourist camp sites to be found anywhere throughout the peninsula. It is beautifully located; shaded, and completely equipped with every facility conducive to comfort and convenience. Frequently the tourist adds a forty or fifty to his mileage, in order that night will bring him to Houghton or Hancock with their fine hotels and camping facilities.

<p align="center"><b>COPPER SOUVENIRS</b></p> <p align="center"><b>Mayworm's Jewelry Store</b></p> <p align="center">Offers Greatest Variety</p> <p align="center">Nothing Better in the Copper Country</p> <p align="center">Opposite Scott Hotel</p> <p align="center">HANCOCK, MICH.</p>	<p align="center"><b>McClure's Modern Garage</b></p> <p align="center">Best Equipped for Service Tel. 29 — For Trouble Car</p> <hr/> <p align="center"><b>FOR RENT</b></p> <p align="center">Lake Shore Cottages With Pavilion Write for Terms and Reservations</p> <p align="center">McCLURE'S — Calumet, Mich.</p>	<p align="center">Camp Sites For Sale On</p> <p align="center">LAKE SUPERIOR KEWEENAW BAY COPPER HARBOR PORTAGE LAKE TWIN LAKES AND OTHER INLAND LAKES</p> <p align="center"><b>F. W. NICHOLS</b></p> <p align="center">Houghton, Mich.</p>
<p align="center"><b>FREDD'S VULCANIZING PLANT</b></p> <p align="center">The biggest, best, most courteous and completely equipped TIRES, SALES and SERVICE in Upper Michigan.</p> <p align="center">Tel. 534 for Service Car</p> <p align="center"><b>GENERAL &amp; LEE TIRE AGENCY</b> We take the (ice) out of Service</p> <p>HANCOCK MICHIGAN</p>		<p align="center"><b>P. C. BROOKS</b></p> <p align="center">West Side Druggist Drugs — Kodaks — Films — Cigars Near the Bridge HOUGHTON, MICH.</p>
<p align="center">50c Storage, 50c 100 Car Capacity — Washing, Greasing and Repairing</p> <p align="center"><b>NASH AND AJAX CARS</b> Tel. 172 For Service Car</p> <p align="center"><b>Lieber &amp; Lampinen</b></p> <p>608 Quincy St. HANCOCK, MICH.</p>	<p align="center"><b>GOODELL OIL STATION</b></p> <p align="center"><b>GASOLINE, AND 100% PURE PENNSYLVANIA OILS</b></p> <p align="center">When in the Famous Copper Country Call at GOODELL'S</p> <p align="center">The Only Independent Dealer Every Goodell Station an Information Bureau HOUGHTON, HANCOCK and CALUMET, MICHIGAN</p>	
<p align="center"><b>CLOVERLAND MOTOR SALES CO.</b></p> <p align="center">Ford Sales and Service High and Low Test Gas Call Us for Road Car or Free Maps and Information</p> <p>SIDNAW On M-26 MICHIGAN</p>	<p align="center"><b>TOURISTS SERVICE STATION</b></p> <p align="center">Every Tourist's Service Ask Here for Local Information</p> <p align="center"><b>J. BORROW</b></p> <p>SIDNAW - - MICHIGAN</p>	<p align="center"><b>HOTEL KNAUF</b></p> <p align="center">Best Meals and Lunches 200 Capacity Rooms \$1.00 — Meals 50c</p> <p align="center"><b>KNAUF &amp; STACK</b></p> <p>HOUGHTON - MICHIGAN</p>
<p align="center"><b>WARNER GARAGE CO.</b></p> <p align="center">Hudson and Essex Service Station Information Bureau Special Attention To Tourists On M-15 CHASSELL, MICHIGAN</p>		<p align="center"><b>EVERYTHING FOR THE TOURIST</b></p> <p align="center">Complete line of Tires and Accessories, Gasoline and Mobiloils. Storage and repairing on all makes of cars. Service.</p> <p align="center">Distributors for Dodge Brothers</p> <p align="center"><b>WIEDER AUTO AND HARNESS CO.</b></p> <p align="center">Opp. Calumet Theatre Phone 140 CALUMET</p>



THERE'S MYSTERY, ROMANCE AND A WEALTH OF



Where knights of Pythias  
Ritual was written -  
Eagle Harbor - Keweenaw



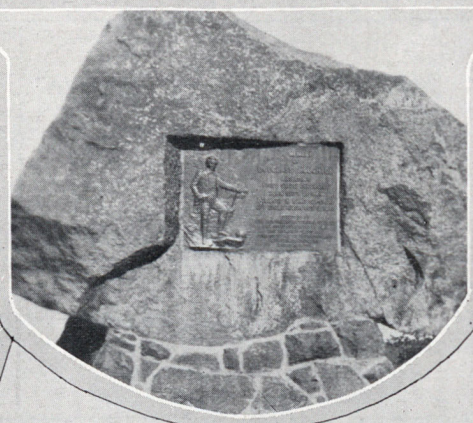
Old Fort Wilkins ~ ~ In Keweenaw ~ ~



M-15 Near Calumet



Lake Breeze Hotel  
Eagle Harbor



Douglas Houghton Monument  
Eagle River



The Old Cliff Mine  
Keweenaw County



Rock bound coast  
Eagle Harbor

# Keweenaw County

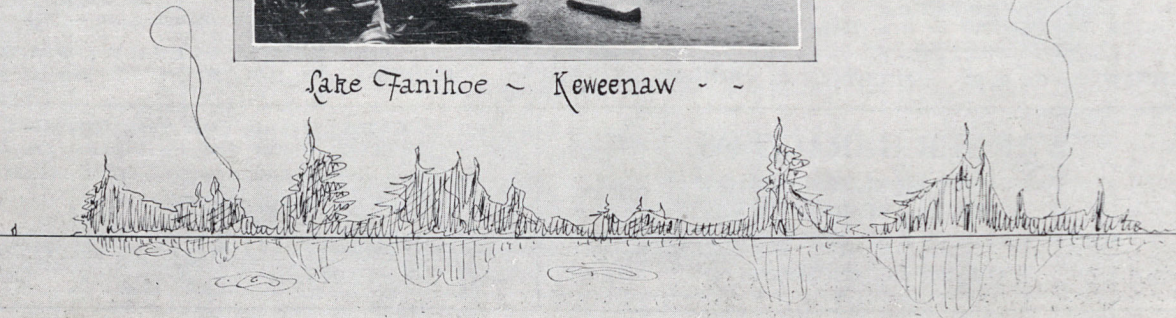
The Enchanted Peninsula ~



'Winter Comes'  
Calumet



Lake Tanihoe ~ Keweenaw ~ ~





## FASCINATING HISTORY IN OLD FORT WILKINS

### KEWEENAW COUNTY



THAT part of Keweenaw County which immediately adjoins the fine touring highway piercing the peninsula to its northernmost tip, can be seen, perhaps, in a day—if the weather is good and your car is fast. But Keweenaw, to be seen, to be appreciated and to be thoroughly enjoyed must be LIVED.

One rhapsodic writer caught much of the true impression of the enchanted peninsula when he said: "Gazing afar, from the round top of old Keweenaw, the sweep of the eye embraces three-fourths of the circle of the lake (Superior), while in the other quarter, save the pleasant little oasis around the mines, spreads an immense solitude—a boundless forest of pines, stretching in deepening files, or piercing the sky like the spears of giants. The mists, rising from the valley to meet the glorious orb of day, are transformed in clouds of amber, while down, down—far, far away, rolls the broad, blue and majestic Superior, a sea of blazing crystal."

And that is not at all far fetched, 'tho somewhat prosy, perhaps, for when the United States government officials stood there, on the "round top," and gazed out upon the scene hereindescribed, they nodded an official approval and said: "This should be our next national park."

The Keweenaw Peninsula, comprising all of Keweenaw County, stands today a living, glorifying monument to the vast acres of giant timber which once abounded throughout all of upper Michigan, for though millions have been offered for its timbered treasure, Keweenaw remains today untouched. Not a tree has fallen—never an axe been swung, to mar the original and natural beauty of this wonderful garden-spot. And that is why old Keweenaw, dense with verdant growth, yet pierced throughout by winding trails and wide, well-kept drives—dotted with placid, radiant lakes, and with just enough of vibrant history to nicely balance the perfect picture, presents the acme of pleasure and thrill to the visitor.

History? Visit old Fort Wilkins, near the tip of Keweenaw. Hear the story of the early struggles. Wander through the ancient buildings; stroll along the battered barricade—then, standing there before that silent row of structures, gaze out upon the clear blue of Lake Fanny Hoe and picture, there, the scenes of war and strife which once rang through the hills and valleys. Gaze again—and all is quiet, peaceful, serene and beautiful. A queer, haunting sensation creeps over you.

—And THAT is the spell of Keweenaw—the most beautiful, most mysterious and altogether thrilling bit of natural wonder and beauty which may be found anywhere throughout the land.

### INDUSTRIALLY

Withal its natural splendor, Keweenaw is not without its industrial possibilities,—its natural resource. It has been said that Keweenaw abounds in a wealth of virgin timber and like Houghton, holds deep in its bosom rich treasures in copper. Industry has not yet reached out for these resources, but when it does, Keweenaw will not be found wanting.

Finally—Keweenaw, scenting the trend of the times and realizing that its boundless natural beauties are not without a strictly commercial advantage, Keweenaw is preparing to accommodate the thousands of summer visitors to Cloverland. There are summer hotels—at Eagle Harbor and Copper Harbor. Keweenaw has its camp site—Old Fort Wilkins, now a state park, and the past season has brought about a number of marked improvements to this historic old spot.

### QUALITY MERCHANDISE

#### FOR YOUR HOME, CAMP, OR VACATION TRIP

If contemplating a visit to Keweenaw, write for our "How To See Keweenaw," originated by us as an aid to tourists and campers.

**PETERMANN STORES COMPANY, INC.**

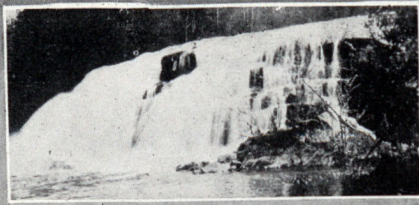
**Kearsarge — Allouez — Mohawk — Gay — Phoenix**

**Office at 407 Hecla Street, Laurium, Mich.**



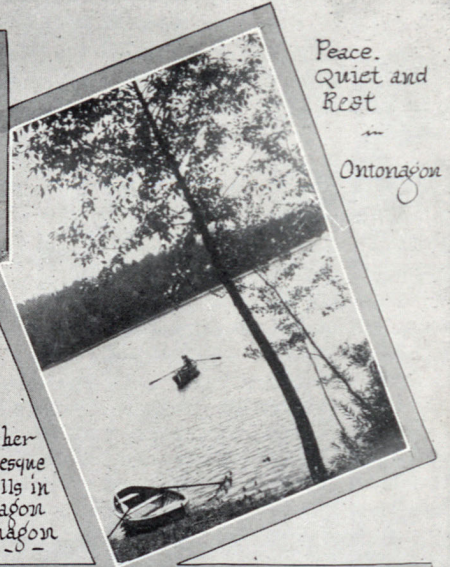
WHERE AGRICULTURE IS MODERN, AND WHERE

Blow-off of  
Ontonagon  
Mine



Bon Falls on the  
Ontonagon River

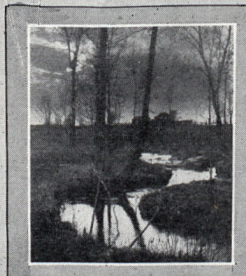
Peace,  
Quiet and  
Rest  
Ontonagon



Another  
picturesque  
water falls in  
Ontonagon  
falls



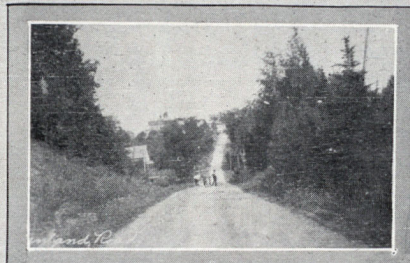
Victoria Road - Ontonagon County



Meadow Creek - Sidnaw



Where the trail winds



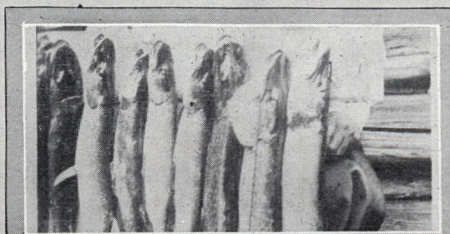
Greenland Road

# Ontonagon County

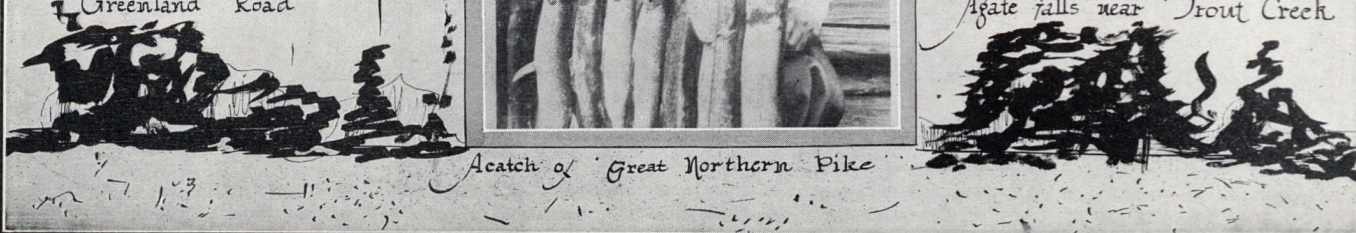
The Cloverfield of  
Cloverland



Agate Falls near Trout Creek




Catch of Great Northern Pike





THERE IS ROMANCE IN THE STORY OF THE SOIL

ONTONAGON COUNTY

 O matter whether you are approaching Ontonagon County from the north, south, east or west—you have learned, ere now, that Cloverland, the upper peninsula of Michigan, boasts that happy faculty of sending you from one pleasant surprise head-on into another.

For while, thus far, perhaps, you have dabbled among the mines and mills, and poked your curious nose among the historic ruins of decades past, you are now, quite suddenly, brought face to face with a different, 'tho not entirely new phase of industrial activity. And that is agriculture.

It is not necessarily discriminating to say that Ontonagon County—or the “fertile valley of Ontonagon,” as it is familiarly known—has made rapid progress in the development of its natural, agricultural resources. Perhaps few sections of the peninsula are as richly favored, from the standpoint of climate, growing season and the productive quality of its soils, as Ontonagon County. And, similarly, we find Ontonagon leading all other districts in the peninsula in this department.

Granting, then, that the natural environment and conditions are ideal, we find here, too, a distinct spirit of progression and co-operation among farmers and so-called “city folks” alike. Ontonagon has come to know the economic value and advantage of a well-developed agriculture—and Ontonagon is reaping the harvest. You will find, in Ontonagon, a prosperous, contented and aggressive type of farmer who leans strongly to the modern in his methods and who has a closer acquaintance with a comfortable bank account than many others who are either less fortunately situated or who have not heeded the march of science and progress.

You will like the rich, clover-laden ozone of Ontonagon. You will like the spirit of the road-side farmer, and the store-keeper as well. You will like the brisk, energetic atmosphere of its smaller farming locations.

Ontonagon mingles mining with its agriculture—and establishes a happy medium, and a wise industrial balance between the two.

Finally, you will like Ontonagon for the splendor of its hills—the Porcupine and White Pine Mountains,—two favorite objectives for the tourist. The White Pine Mountains, particularly, reveals to the visitor what is perhaps the greatest known area of genuine white pine timber throughout the country. And for that reason, it is carefully preserved, and highly valued.

Four miles west of Trout Creek,—itself a thriving, lumbering community in Ontonagon—the tourist-visitor comes upon the falls of the Ontonagon River, at once a beautiful and fascinating sight. The falls of the Ontonagon are perhaps the largest, and without a doubt the most beautiful, of the water-falls of the Upper Peninsula of Michigan. A free tourist camp is established here, and the spot is tremendously popular among the summer visitors to Cloverland.

Then there are the Bond Falls, on the Calderwood road, some nine miles south of Trout Creek. These falls, too, are a product of the Ontonagon River, and here—ah, there you are—is some of the best trout fishing to be found anywhere throughout the peninsula.

You leave Ontonagon with a very pleasant taste in your mouth, and a decidedly favorable impression of its people.

**TROUT CREEK INVITES TOURISTS**

See Agat Falls — Enjoy Nature's Beauty in the Heart of Michigan's

**Greatest Fishing and Hunting Region**

On M-28 — See Map for Location — Write

**TROUT CREEK BUSINESS CLUB**

TROUT CREEK, MICH.

**LAKESIDE GARAGE**

Get Our Service  
Tel. 62

ONTONAGON - MICHIGAN

**J. P. DONNLEY CO.**

Everything For the  
Tourist

ONTONAGON - MICHIGAN

**CAN WE BE OF SERVICE**

Let us help make your visit a  
pleasant one

**Sportsmen's Headquarters  
and**

**Information**

Car Storage and General Repairing

**Hecox-Scott Hdw. Co.**

ONTONAGON, MICH.

**Crocker's Modern Garage**

Ford Motor Co. Products

**Complete Stock Goodyear Tires and  
Auto Accessories**

Fully Equipped Shop and Battery  
Service — Storage Capacity  
50 Cars

“Free Air”

ONTONAGON - MICHIGAN

**OSTRANDER'S**

Drugs and Soda Service

Films — Kodaks

ONTONAGON - MICHIGAN

**HOTEL MARCELLA**

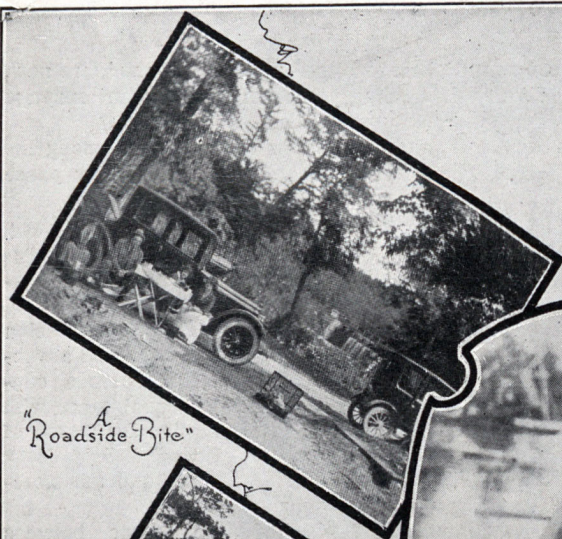
Like Home — Try Us  
Come In Any Time

M-28

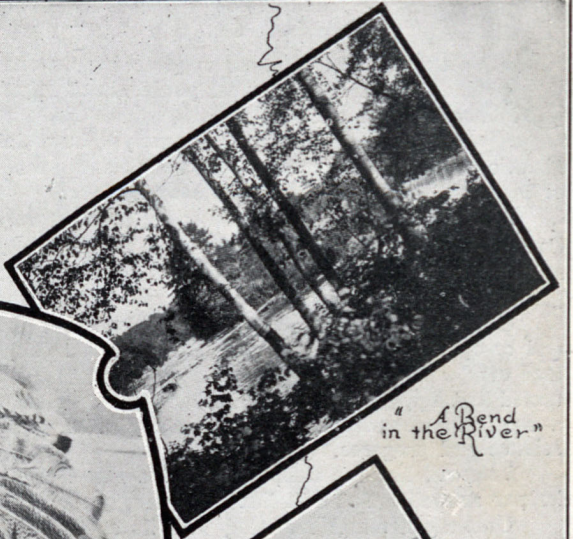
EWEN - MICHIGAN



HIKING, AND A HEALTH GIVING CLIMATE — ALL ARE HERE



"Roadside Bite"



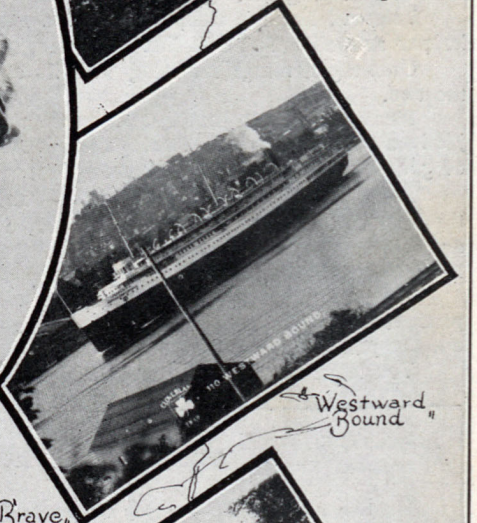
"A Bend in the River"



"Pigeantry in Cloverland"



"Objw An Brave"



"Westward Bound"

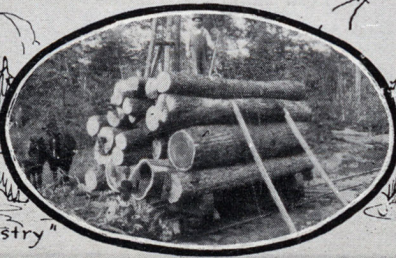


"From the Observation Car"

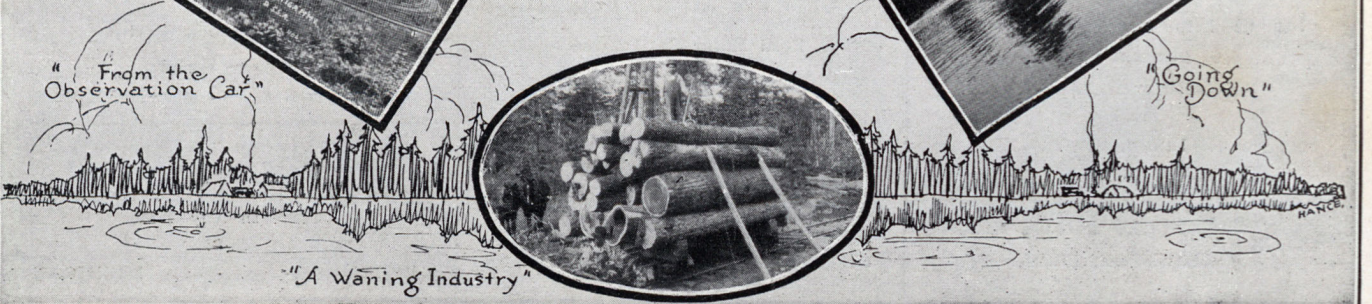


"Going Down"

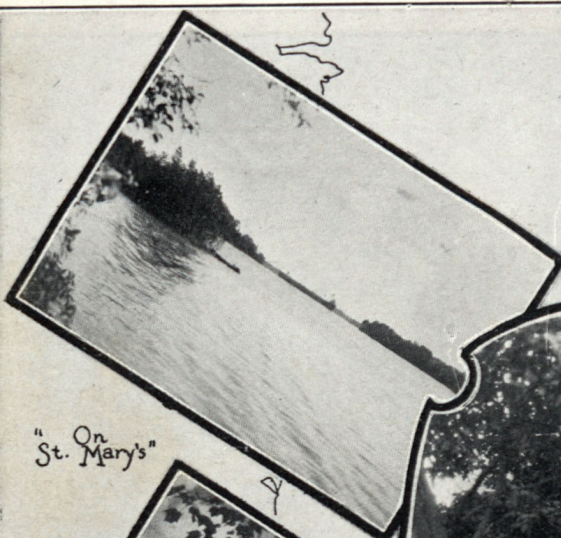
# "The Land of Hiawatha,"



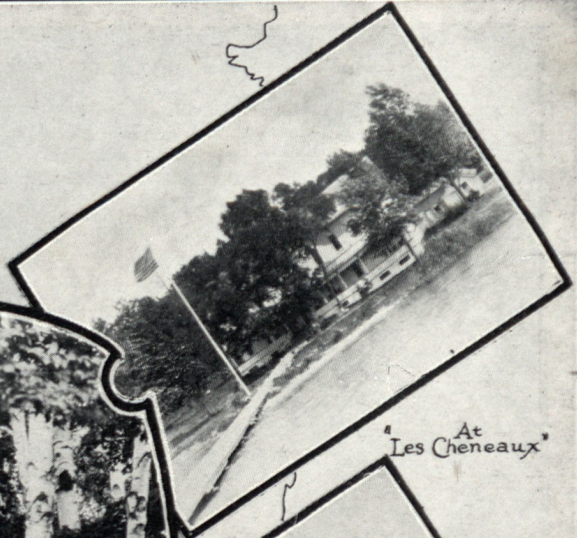
"A Waning Industry"







"On St. Mary's"



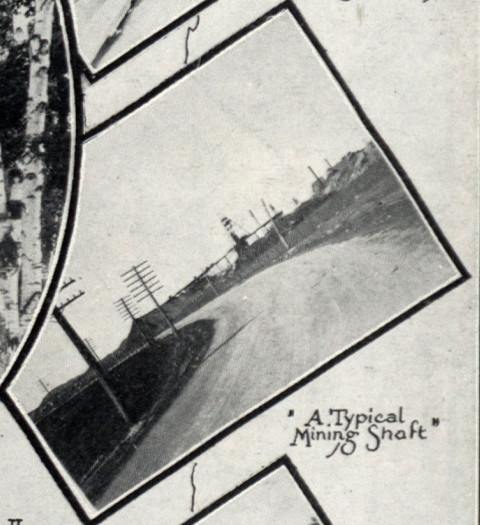
"At Les Cheneaux"



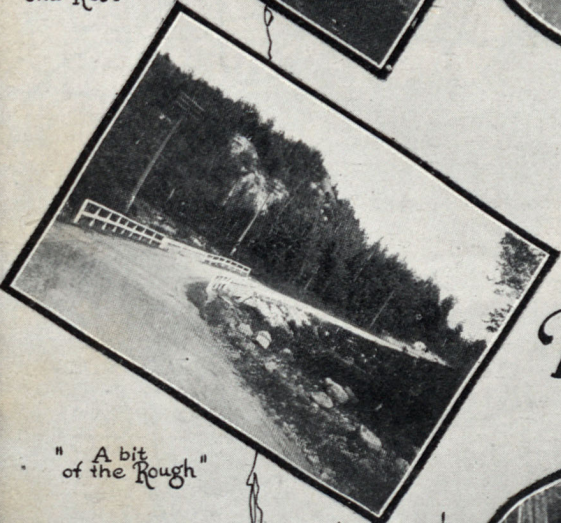
"Sunset and Rest"



"Summer Home among the Birches"



"A Typical Mining Shaft"



"A bit of the Rough"



"A Peek at the Bay"

# "The Tourists' Paradise"

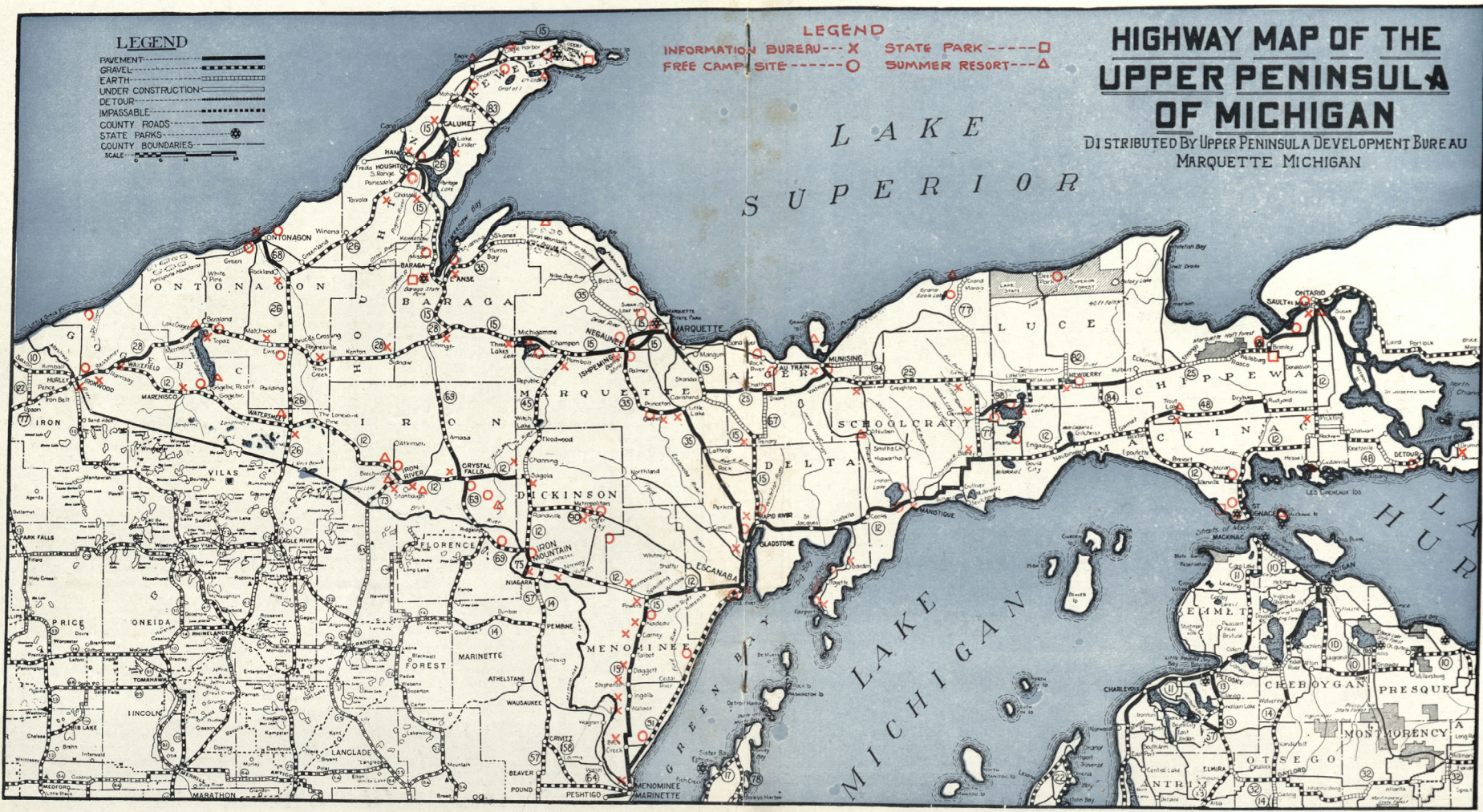


"The Feeding Ground"





PUT OUT YOUR CAMP FIRE. HELP US TO KEEP MICHIGAN GREEN.



**LEGEND**  
 PAVEMENT: [Solid line]  
 GRAVEL: [Dashed line]  
 EARTH: [Dotted line]  
 UNDER CONSTRUCTION: [Line with cross-ticks]  
 DETOUR: [Line with 'X' marks]  
 IMPASSABLE: [Line with diagonal dashes]  
 COUNTY ROADS: [Thin solid line]  
 STATE PARKS: [Dashed line]  
 COUNTY BOUNDARIES: [Thin solid line]  
 SCALE: 0 1 2 4

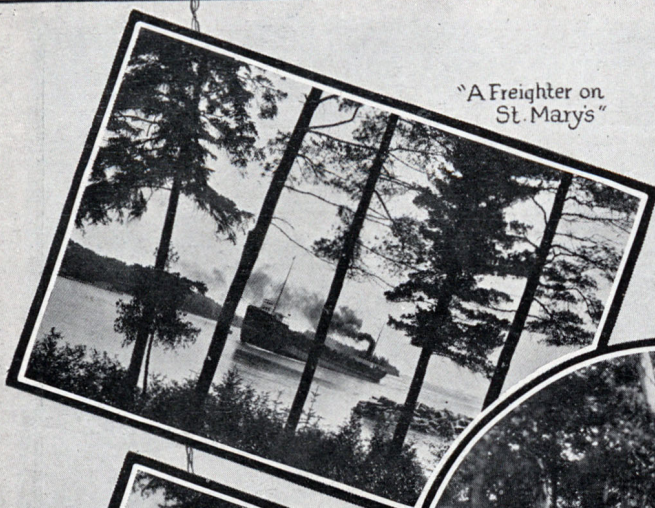
**LEGEND**  
 INFORMATION BUREAU: X  
 STATE PARK: [Dashed line]  
 FREE CAMP SITE: [Circle with dot]  
 SUMMER RESORT: [Triangle]

**HIGHWAY MAP OF THE  
 UPPER PENINSULA  
 OF MICHIGAN**  
 DISTRIBUTED BY UPPER PENINSULA DEVELOPMENT BUREAU  
 MARQUETTE MICHIGAN

ALL TRAILS LEAD TO THE UPPER PENINSULA OF MICHIGAN.



PRIMEVAL FORESTS AND OZONE LADEN BREEZES OFFER



"A Freighter on St. Mary's"



"Beautiful Presque Isle - Marquette County"



"A Camp amid the Birches"



"At the Soo Country Club"



"Log-Cabin Inn - Luce County"



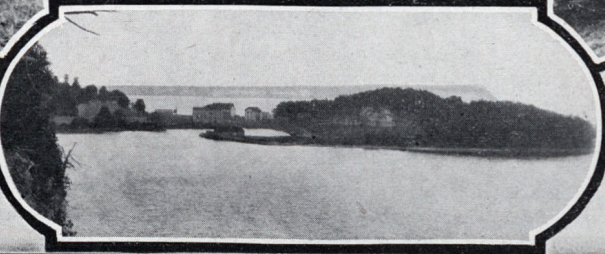
"A Prosperous Farm Home"



"Boys' Camps are Popular"



"Fayette Resort - Delta County"





A SPECIAL ATTRACTION TO THE TOURIST IN CLOVERLAND



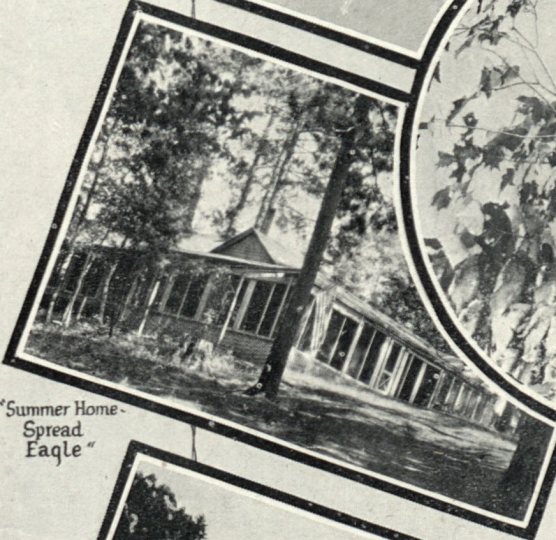
"A Forest Drive"



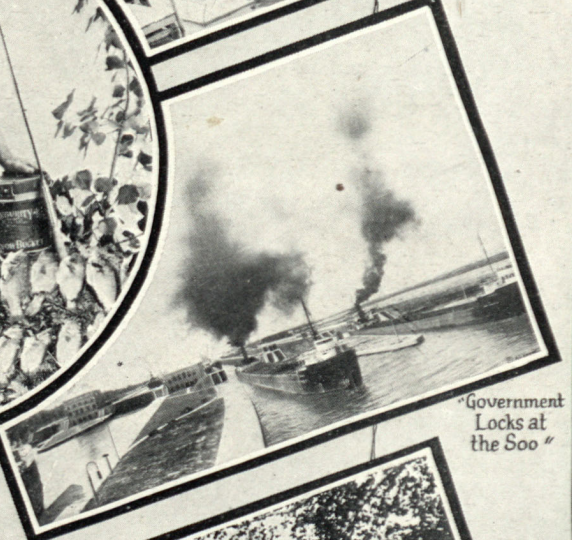
"Islington Hotel - Les Cheneaux Islands"



"A Day's Catch - Gogebic Lake"



"Summer Home - Spread Eagle"



"Government Locks at the Soo"



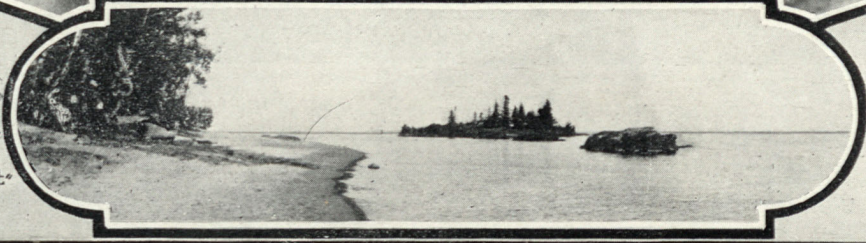
"Mouth of Montreal River - Gogebic County"



"A Grand View - North of the Soo"



"Scenic Keweenaw Point"

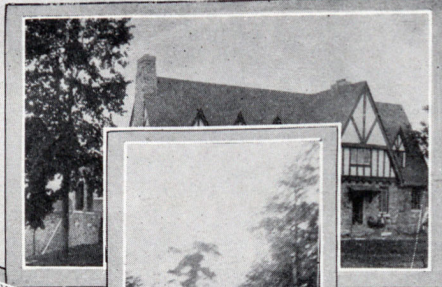




THERE IS ROMANCE IN THE STORY OF THE



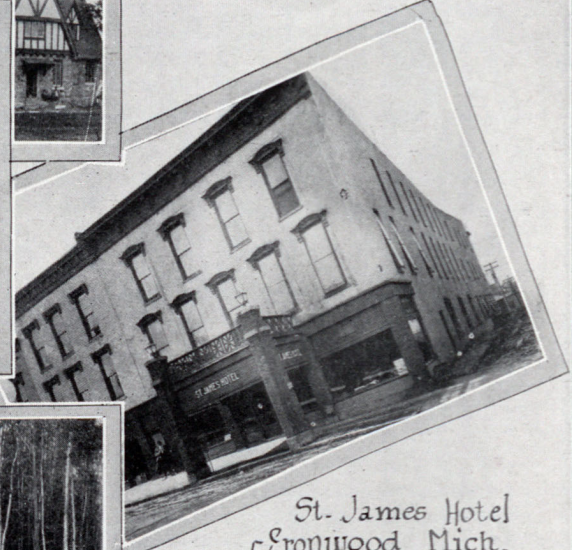
Curry Hotel  
Ironwood Mich.



Our Country  
Club House



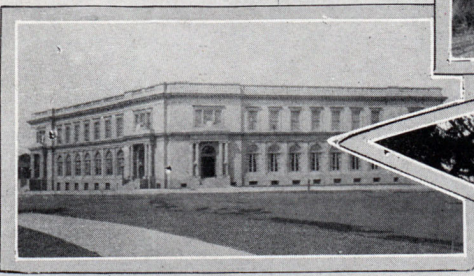
The Lonesome Pine



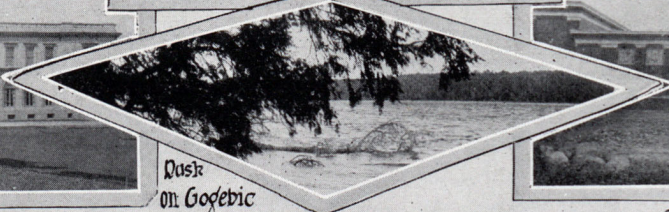
St. James Hotel  
Ironwood Mich.



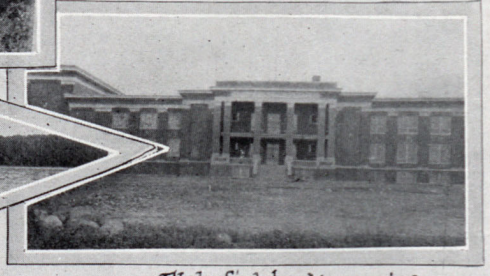
On the  
Cloverland trail



Memorial Bldg  
Ironwood Mich.



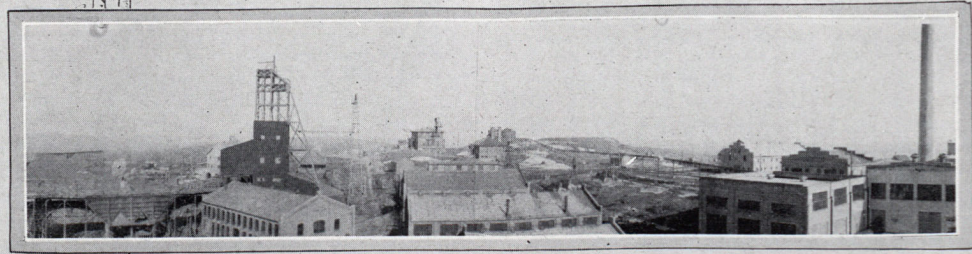
Rock  
on Gogebic



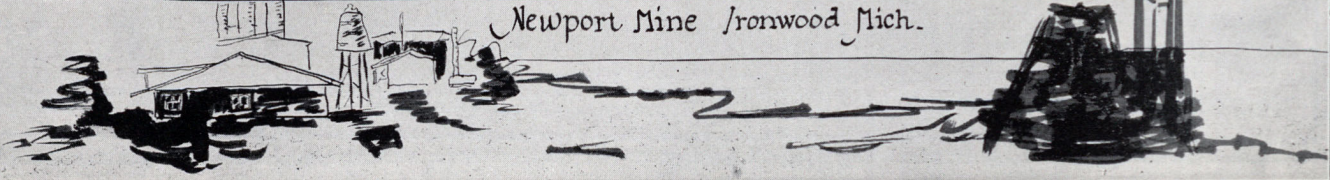
Wakefield Memorial  
Wakefield Mich.

# Gogebic County

Where Iron is King



Newport Mine Ironwood Mich.





## GOGEBIC COUNTY



F Gogebic County could talk, its proud boast would probably go something like this: “I offer, for your approval, the finest, continuous stretch of wooded highway which can be found anywhere throughout the Upper Peninsula of Michigan.” For surely, that part of M-12, inclining slightly northwest from Iron County, is more than distinctive in its natural beauty.

Here, for about twenty-five miles, the tourist-visitor glides along, over a slightly-winding and perfectly maintained stretch of macadam, through a stretch of timberland as green and dense as much of that you saw up there in Keweenaw. The soft, sweet scent of the pine and balsam but adds, many-fold, to the thrill of that experience, and, in the early dawn, or late afternoon, when the golden rays of Old Sol throw sparkling shadows across your trail—you are reminded of the dazzling trails of Southern France, and Switzerland.

All this ends quite abruptly, however, as the road ahead swings suddenly into the heart of the Gogebic mining range—for here, again, you come face to face with the sterner 'tho none the less fascinating feature of upper Michigan's industrial activity.

The Gogebic Range is a particularly rich and productive system of iron-producing properties, and Ironwood, Wakefield and Bessemer, the three most important communities in that district, are clearly indicative of the material wealth of that industry.

Ironwood, for instance, has been credited with more construction within the community during the past three years, than any other city of its size throughout the State of Michigan. One readily gives credence to that fact during a swing about the city—for fine, modern structures which have sprung up here in an incredibly short space of time are indeed indicative of unusual community progress.

Getting away, now, from the purely commercial phase—the lake regions of Gogebic have established a tremendous following among the vacationists. Lake Gogebic, for instance—the largest inland lake in the Upper Peninsula of Michigan—is dotted, along its shores, with the cottages of those who flock there, annually, to while away the summer months. Some are the cottages of those residing within the district—but many have been built there by others who, tired and worn from the hot, sweltering pavements of the city, the rush and strife of business, sneak off, in June, July or August, to enjoy the peace and quiet of a region like that along the shores of Lake Gogebic.

(Continued on next page)

### B. P. O. E. IRONWOOD LODGE No. 1287

Invites all ELKS and their friends to make its CLUB their headquarters when visiting the Gogebic Iron Range. Suggestions given for side trips, to mines, and other points of interest. Club House modernly equipped with lounge and rest rooms, for both men and women. **ELKS' DINING ROOM SERVICE A SPECIALTY.** Main and private dining rooms for regular meals, private dinners or luncheon parties.

**Rotary Luncheon Every Wednesday**

For reservation write or phone Manager, Tel. 620

IRONWOOD

Jct. of All Main Highways

MICHIGAN

#### New St. James Hotel

“A Home Away From Home”

45 Rooms with Bath

Hot and Cold Running Water

All Rooms Equipped with Marshall Inner-Spring Mattresses

IRONWOOD MICHIGAN

#### Reed's Restaurant

The Finest Restaurant of the Northwest. Located in New Masonic Building

You haven't seen Cloverland until you have visited “Reed's”

Regular Meals and a la Carte

IRONWOOD MICHIGAN

#### Curry Hotel

“The House of Personal Service”

All Rooms with Bath and Running Water

Dining Room Best in Northwest American Plan

IRONWOOD MICHIGAN



## SEE THE LARGEST OPEN-PIT MINE IN MICHIGAN

There are woods and waters galore—the trails, the hunting and the fishing—in Gogebic County. Here, indeed, is peace, and quiet—and rest. Realizing, perhaps, that in its woods and waters lie a potential wealth,—a wealth to be derived, no doubt, from that ever-increasing army of “fliver gypsies,” Gogebic is stepping up to toss its natural attractions into the ring and to make a most worth-while bid for popularity. It has its summer hotels—its cottages, along the lakes, its camp sites—and the summer visitor to Gogebic will find there a most hearty welcome, and a keen desire to please and to impress.

Ironwood—the gate-way to Cloverland from the west, is, likewise, the portal to Gogebic at the same extremity of that county. And Cloverland glories in the proud boast that Gogebic is a most fitting greeting to the visitor headed east, through this fascinating north country.

Long before the advent of automobiles and good roads, Marenisco was the objective point of countless thousands of week-end visitors from Chicago, Milwaukee and eastern points. Entire trains were chartered and laid over at this point from Friday night to Monday morning for the benefit of those seeking outdoor recreation. Good roads and automobiles make it possible now for everyone to enjoy this nature's beauty spot and the lake fronts and forests surrounding this village offer ample room for all.

### COME TO MARENISCO

Here the traveler will find to an unusual degree  
the elements which attract folks  
into the open.

### Natural Scenic Beauty Amidst Wonderful Lakes and Virgin Forests

Excellent accommodations for all, right in

### THE CENTER OF THE GREAT OUTDOORS

These features, coupled with our fine climate, historic associations, close proximity to greater centers lacking these elements, and above all “Good Roads,” make our region

## THE COUNTRY'S GREATEST PLAYGROUND

Free Camp Sites — Boating — Hunting — Fishing and Bathing. (On M-12. Also can be reached from Wis. N-10. See map).

For more detailed information of Marenisco Township, address

**MR. J. E. McNICHOLAS**  
Marenisco, Michigan

**Bulk Agency—Tires, Oils and  
Accessories**

Tel. 236 for Service Car—Day or Night  
30-Car Storage Capacity

**Walter Point's Garage**  
IRONWOOD, MICHIGAN

**Ironwood Storage Garage**  
Mechanic Service and Washing  
(Moon & Diana Dist.)  
On M-12  
Drive In  
**MEAD & SON**

### Johnson Electric Co.

Authorized  
Ignition and Battery Service  
Auto-Lite, De Jon, Delco, Remy and  
Exide Batteries  
208 McLeod Ave.  
IRONWOOD, MICH.  
On M-12 Tel. 217 On M-12

Why we ask you to help protect our  
Forests  
— BECAUSE —  
—Michigan, last year, produced only  
one-fourth of the forest material it  
consumed.  
—from an exporting lumber state, it  
has become an importing state, using  
1,500,000,000 board feet a year, and  
supplying from its wood in 1923 only  
402,109,000 board feet.

Northern Michigan and Wisconsin  
Lake Frontage and Farm Lands

### A. Lieberthal & Son

Real Estate Office  
Established 1886

### SUPERIOR GARAGE

On M-12 24 Hour Service  
Member of U. S. A. and A. M. A.  
Fire Proof Storage



# WHERE IRON IS KING

## IRON COUNTY



IRON COUNTY'S one disadvantage—its glowing misfortune, is its name. A title as "hard," as cold and as uninteresting-sounding was never meant for a region as thoroughly enjoyable as Iron County.

True, the name implies much—for here, too, as in so many other sections of the upper peninsula of Michigan, iron mining plays an important part in the industrial life of the region. But a glance out upon the beautiful Chicagoan or Fortune Lakes,—even from the road—at once dispels from the mind any thought of commerce and industry, and leaves you wondering how the busy wheels of industry can whirl so close—so near to such a scene, and leave no mark, no trace of "city life" upon it.

To detail the beauties of Hagerman and Sunset lakes,—of the natural parks, the drives and the many interesting side-trips, of Iron County, is but to re-count, again, the story of upper Michigan—for here is a district which is distinctly typical in its natural attraction. And like Baraga—Iron County boasts its Indian burying ground, where the stalwart braves of the old Chicagoan tribe, a branch of the Chippewas, now roam, in spirit, through their "happy hunting ground." It is on the shores of Chicagoan Lake, a fitting resting place, and a source of never-failing interest to the visitor.

But—'tho Iron is but one of many counties in its natural appeal, it has its distinctive attraction, and in this instance, Iron County rears high its head with the proud distinction of possessing a genuine, western, dyed-in-the-beef and raised-on-the-hoof cattle ranch. It is the "Triangle Ranch, of the Rosebush Corporation, of Appleton, Wis., and is located a short distance from Amasa, a small mining community of Iron County.

The Triangle Ranch, comprising three separate ranch properties and covering a vast acreage of rough, cut-over land in that district, stands today as a distinct credit to the moneyed interests which have backed it faithfully for the past five years. Here, from a veritable wilderness, has sprung an energetic industrial feature which has attracted wide attention for its bigness and distinctiveness among the other industrial activities of the peninsula.

## THE ROADS

Iron County makes a special though not entirely exclusive bid to popularity by reason of its excellent highways. They are a joy, not only for their construction—the miles of smooth, yielding macadam—but as well for the rapid-changing kaleidoscope of scenic effect which they present. Now skirting the shore of a sparkling inland lake; dipping back again, inland, and through the heart of a deep, shady forest; then along the banks of a rushing stream, or, perhaps, a rippling, bubbling creek;—then out again over broad, rolling plains; mines, farms—aye,—Iron County's boast to attraction and interest is not an idle one.

And Iron has not been idle—not unmindful of its obligation and duty to the summer visitor. You will find excellent accommodations here,—at Iron River; at Crystal Falls, where a new hotel, the "Crystal Inn," has been but recently completed.

Perhaps Iron County winks its business eye and says: "We shall be ready," for surely they are making rapid strides in this newest of Cloverland's commercial enterprises—the tourist industry.

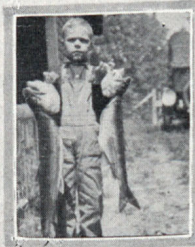
<p>K. I. C. Y. Combination Service Expert Tire and Battery Service— No Waiting (We Never Sleep) <b>S. &amp; S. Tire and Battery Shop</b> IRON RIVER, MICH.</p> <hr/> <p><b>LINDHAL BROS.</b> Repairing, Storage, Tires Next to Iron Inn Tel. 304 for Service Car IRON RIVER MICHIGAN</p>	<p><b>CRYSTAL INN</b>  EUROPEAN  NEW — MODERN  CRYSTAL FALLS, MICH.</p>	<p><b>FLOOD'S GARAGE</b>  Information Complete Service CRYSTAL FALLS, MICH.</p> <hr/> <p><b>Lindwall &amp; Lindstrom</b>  Iron County's Largest Garage Phone No. 6 IRON RIVER, MICHIGAN</p>
--	---	---



BEAUTIFUL LAKES, FINE HIGHWAYS



Between  
Crystal Falls  
and Iron River  
on  
Cloverland  
Trail



Caught  
in  
Chicagoan Lake



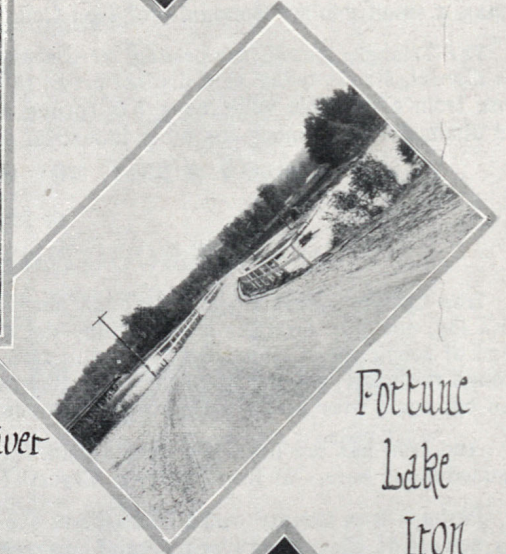
Chicagoan  
Lake



Fortune  
Lake  
Drive  
Iron  
Co.

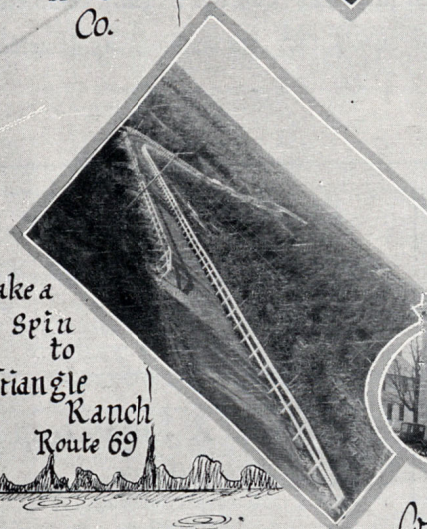


Alvin Road  
South and West  
of Iron River



Fortune  
Lake  
Iron  
Co.

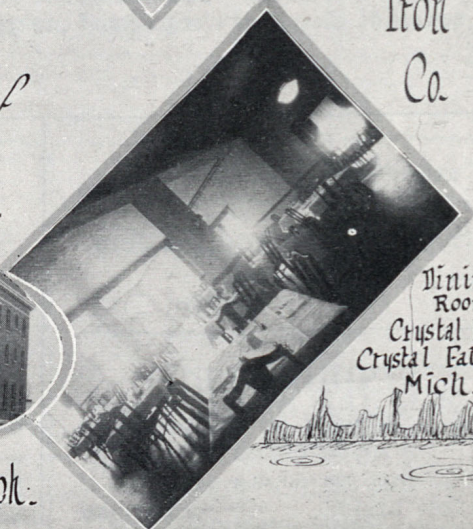
Iron County  
in  
the Heart of  
Cloverland



Take a  
spin  
to  
Triangle  
Ranch  
Route 69



Crystal Inn " Crystal Falls, Mich.  
Cloverland's Newest Hotel



Dining  
Room  
Crystal Inn  
Crystal Falls,  
Mich.



## Come to Crystal Falls

The county seat of Iron County, is located at the junction of State Trunk Lines M-12 and M-69. M-12 is the Theodore Roosevelt International Highway from Portland, Maine, to Portland, Oregon. M-69 is a continuation of W-69, which, in turn, connects with W-57 and forms a through highway from St. Louis, Mo., via Chicago, to Keweenaw peninsula. The highway is solid concrete from St. Louis to Crystal Falls, barring 123 miles of splendid gravel between Crystal Falls and Chicago.

Crystal Falls has the best hotel in the upper peninsula, a building of recent construction, splendidly equipped and operated upon the European plan.

The city is located in the center of a splendid hunting and fishing district and its waukee—it is 357 miles from Milwaukee—places it in the nearness to Chicago and Milwaukee. The cottagers and tourists from available territory for summer Chicago and Milwaukee. The rivers are stocked with trout, lakes with bass, pickerel and the rainbow and speckled, and the of Crystal Falls to the heart of Wisconsin. It is but an hour's drive of the Land o' Lakes country



ated upon the European plan. center of a splendid hunting nearness to Chicago and Milwaukee. The cottagers and tourists from available territory for summer Chicago and Milwaukee. The rainbow and speckled, and the pike. It is but an hour's drive of the Land o' Lakes country

Crystal Falls, because of its elevation—1,600 feet above sea level—has a splendid climate where hay fever and malarial afflictions are unknown.

CRYSTAL FALLS INVITES YOU TO BE ITS GUEST.

### BOATING — BATHING — HUNTING — FISHING

ALL OF THESE YOU

### FIND IN AND AROUND FOSTER CITY

"Known as the Beautiful White City"

Accommodations and Service Are First Class

### MODERN, CENTRAL HOTEL AND DINING PAVILION

Dozens of Fully Equipped Cottages All Ready

This favorite summer resort combines the pleasures of a vacation and the conveniences of a modern home, offering every

### COMFORT — HEALTH — HOSPITALITY — HAPPINESS

Can You Ask for More or Be Satisfied With Less?

Via Railroads: On the C. & N. W. R. R.; Soo Line at Hermansville; C., M. & St. P. R. R. at Randville.  
Via Auto—M-90—From M-12 and 15 at Three Jcts., Bark River, Hermansville, Randville.

Turn to Map With Special Markings

For More Information Write

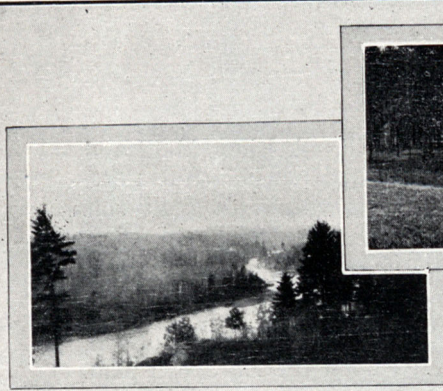
**S. J. PETERSON & CO.**

Foster City, Michigan

"The White City Beautiful"



HENRY FORD HAS REVOLUTIONIZED INDUSTRY HERE



Menominee River  
Iron Mountain Mich.



This Pine Grove is  
Course one of the  
best in the Northwest  
Iron Mountain -



Where the river turns



Road at Spread Eagle  
near Iron Mountain

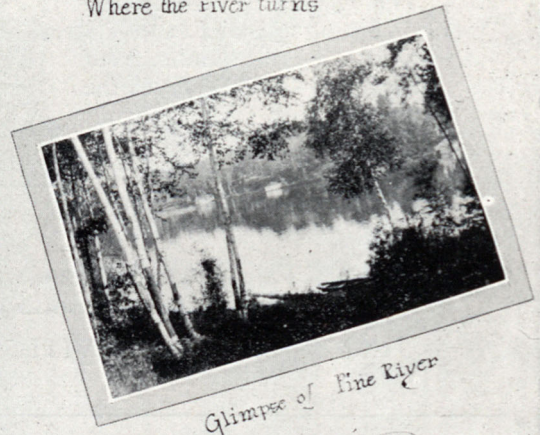


Spread Eagle Lake

Spread Ea  
Near Iron M



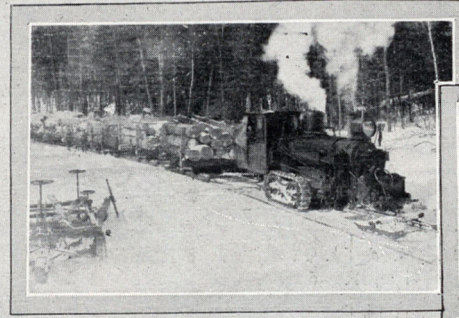
Water Fall near  
Iron Mountain



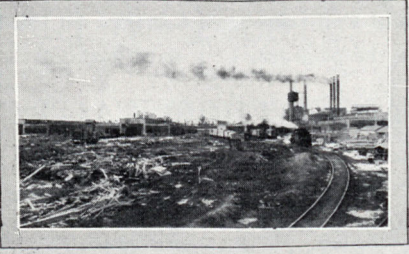
Glimpse of Pine River

# Dickinson County

Where Industry -  
Mining - Agriculture  
and Scenic Beauty  
Attract -



Lumbering with Modern Methods



Early view of Ford Plant



Ready for Market





# VISIT THE PLANT, AT IRON MOUNTAIN

## DICKINSON COUNTY



We have said that Cloverland abounds in surprises. That fact is perhaps most indelibly stamped upon the mind of the visitor when he finds the sign-post reading "Welcome to Dickinson," for, heading into this county from either north, south, east or west, the visitor comes upon a most amazing industrial development.

And—similar to the boast of other similarly fortunate communities throughout the county—Ford has done it. Iron Mountain, the county seat of Dickinson, is the "boom-town" of the Upper Peninsula of Michigan; a town which, in three short years, has sprung from a mining community of only moderate activity to the largest and most prosperous city in the Upper Peninsula of Michigan.

It all began, as we have said, about three years ago when the first of Ford's engineers and surveyors stepped quietly off the train, cut "cross-country a mile or so, and drove the first stake of what is now the village of Kingsford, located just one mile south and east of Iron Mountain proper. Iron Mountain was then a town of about 11,000 population. Today, the population of Iron Mountain is 19,000, and that of the adjacent village of Kingsford, where the Ford plant is located, about 4,500.

There are two immense body plants; a saw-mill; a chemical plant and the usual number of smaller, industrial features and fixtures which make up the remarkable Ford system. And today, Dickinson county, and Iron Mountain, find themselves the focal point for much that we read and hear about upper Michigan industry.

Iron Mountain boasts other industrial interests as well, for here is still another saw-mill, and here too is located the Chapin mine, of the Oliver Iron Mining Company.

With all this, the visitor to Dickinson does not find himself entirely submerged in the busy—maze of commercial enterprise—for Dickinson accepts a just and enviable place among the other districts of the peninsula for its natural appeal. It has its lakes and streams; its splendid roads, and, finally, the Spread Eagle resort, and a dozen other popular summer gathering places provide a maximum of entertainment for the fellow going through.

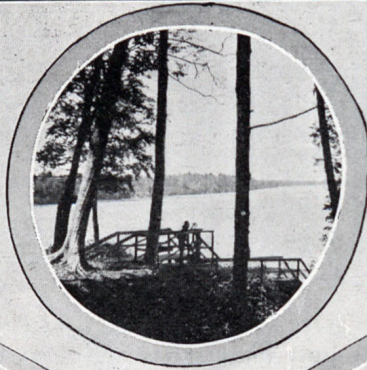
Again, Dickinson boasts one of the finest golf courses to be found throughout the State of Michigan. It is the Pine Grove golf course, at Iron Mountain—a course which has seen a contest of world's champions, and upon which many of the inter-community matches are held today. This, too, is open to the visitor—and few are the golf enthusiasts who fail to avail themselves of this unusual opportunity.

Yes—it is counties like Dickinson which give to Cloverland its just reputation as a "land of surprises," for surely there are thrills a-plenty, and attractions to meet every taste and tendency, no matter how varied.

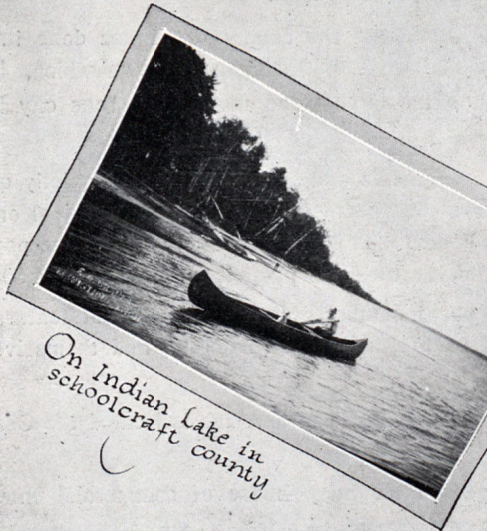
<p><b>NORWAY FORD GARAGE</b> Tel. 145 Always Ready to Serve NORWAY, - - MICH.</p>	<p>The New <b>NORWAY HOTEL</b> American Plan Tourists' Headquarters NORWAY, - - - MICH.</p>	<p><b>ANDERSON MOTOR CO.</b> Norway and Iron Mountain Complete first-class. Service NORWAY, MICH.</p>	<p><b>VIELMETTI CASH MARKET</b> Nationally known Goods Economic Prices Tourists Invited NORWAY, - - MICH.</p>
<p>Specialists in Cloverland Lake Frontage, Resort Sites, Acreage "A COMPLETE SERVICE" <b>J. A. MINNEAR &amp; CO.</b> 201 E. Ludington St. IRON MOUNTAIN, MICH.</p>	<p><b>Milliman Hotel</b> American Plan Catering Especially to the Tourist 100 Rooms — 50 with Bath Rates \$3.50 to \$5.00 The Best of Everything. IRON MOUNTAIN, - MICH.</p>	<p><b>Kingsford Motor Car Co.</b>  Ford and Lincoln  Sales and Service.  IRON MOUNTAIN and CRYSTAL FALLS.</p>	



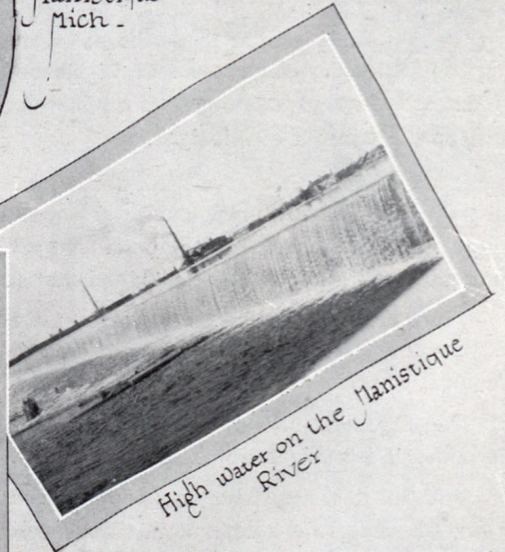
TO MISS THE "BIG SPRING" IS TO OVERLOOK ONE



Tourist camp on Indian Lake Manistique Mich.



On Indian Lake in Schoolcraft county



High water on the Manistique River



Pretty drive to Indian Lake



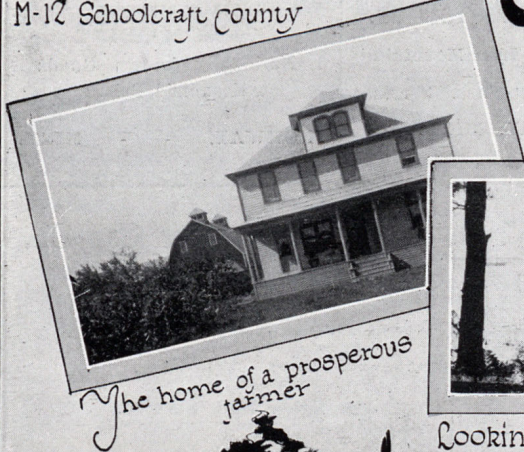
M-12 Schoolcraft County



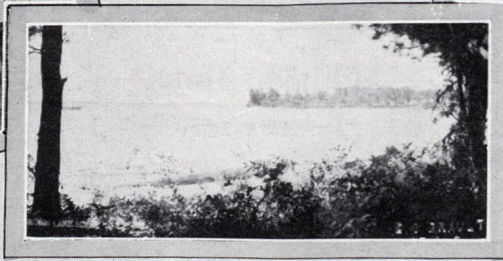
M-12 Leading towards Manistique.

# Schoolcraft County

Ask about the big spring !!



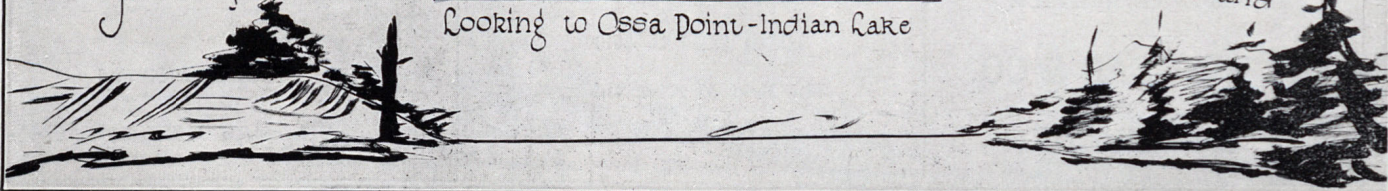
The home of a prosperous farmer



Looking to Ossa Point - Indian Lake



Oatson white pine land









SEE THE COUNTY PARK. VISIT THE STATE HOSPITAL



Camping out in Luce County



Where farming pays ~ ~ ~



Pastoral Scene



On the shores of Whitefish.



Lights and shadows ~



Luce has fine roads - - -

# Luce County

Excellent Highways - Fine Farms - Hunting and Fishing



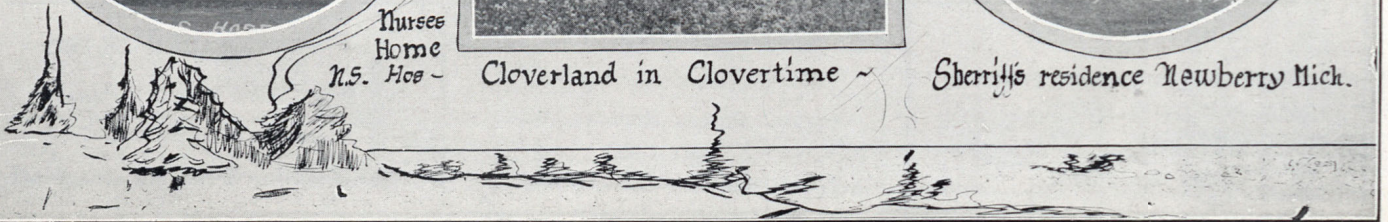
Nurses Home N.S. Hos -



Cloverland in Clovertime ~



Sheriff's residence Newberry Mich.





# AND THEN EAT THE FAR-FAMED NEWBERRY CELERY

## LUCE COUNTY



LUCE county enjoys a most unique distinction among the districts of the Upper Peninsula of Michigan—a distinction which points not to one feature alone but to three, each unique in its field—each distinctive in the purpose which it serves.

And Newberry, the county seat of Luce, is the heart of that three-fold distinction.

First we find, at Newberry, the state hospital for the insane. It is not a pleasant subject to dwell upon, perhaps, but yet a visit to this institution proves, conclusively, to what extent the state of Michigan has gone, is going and plans to go for the care and cure of the mentally afflicted. The hospital is modern, spacious and efficient in every department.

Just a short distance north of Newberry is located the state forest reserve, where hundreds of acres of dense, virgin forest are being carefully watched and protected—held in reserve, perhaps, for a “rainy day” in upper Michigan’s lumbering operations. A visit to the reserve is both interesting and instructive, for here every known method of forest protection and preservation has been established and put into effect.

Finally—and back in Newberry again—we find an industry which has won for itself an almost nation-wide reputation—the raising of celery. “Newberry Celery” is a household word throughout Michigan and the territory immediately adjacent. As the industry grows, so grows the reputation, for “Newberry Celery” rivals in texture and quality the more widely advertised product of Kalamazoo, south of the Straits of Mackinac. The celery industry of Newberry, although even now of state-wide repute, is in its infancy. Every year sees new plots set aside—more acres, in celery, and if present plans mature the dark, rich soil in and about Newberry will some day establish for that community and for Luce County a nation-wide reputation.

Farming plays a prominent part in the industrial activity of Luce county, and along the highways, piercing the district, may be found ample evidence of the rapid agricultural growth within the county. Luce county is yielding, rapidly, to modern science and invention in the development of its agricultural resources. Silos are springing up. The tractor is a common article of equipment.

And if you will divert your route from the main trunk line to the trail—if you will strike off along the path through the forests of Luce; if you will wander along its streams; splash about in its lakes; try a rod and fly in the creeks, and, in the fall, peek along the barrel at a wary rabbit; the elusive grouse or the swift-running buck—you will experience the “kick” that comes from the genuine, life-giving, out-of-doors. Luce offers all this, and, further, stretches forth the hand of welcome that you might come and enjoy its varied attractions to the limit.

**J. REDMOND SERVICE**  
Every Camping Need  
4 CORNERS — M-25

**HARRIS HOUSE**  
Information Headquarters  
European Plan  
NEWBERRY, - - - MICH.

**A. WESTIN & CO.**  
Everything to Eat or Wear  
Ask here for side drives  
Tourists' and Campers' Supplies  
NEWBERRY, - - - MICH.

**LUCE GARAGE**  
Expert Workmanship  
Dodge Bros. Service — Willys,  
Overland — Hudson, Essex  
Tel. 138 — Service Car  
NEWBERRY, - - - MICH.

Right in the City  
**SURRELL'S GARAGE**

Fire-Proof Storage  
Tel. 21-F2 for Trouble Car  
M. SURRELL & SON, Newberry

**Newberry Hotel**  
“Home, Away from Home”  
Stop at the Newberry Hotel  
when traveling through  
that district.  
DUNCAN CAMPBELL,  
Prop.  
NEWBERRY, MICHIGAN

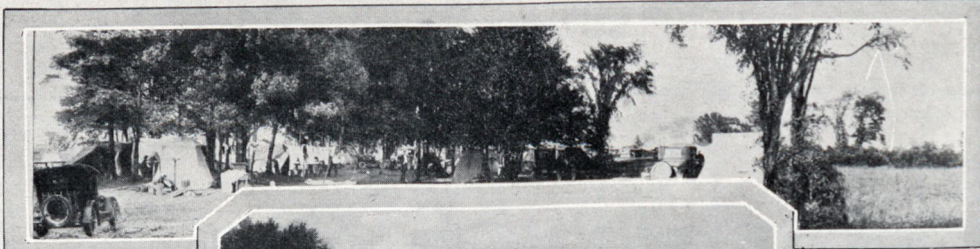
**THE ANTLERS**  
M-25, on Hulbert Lake  
Chicken Lunches — Supplies  
Fishing, Boating  
W. H. AGNEW HULBERT

**JOHNSON STATION**  
Motorists' Supply Service  
on M-25

**Foster's Garage**  
BUICK Sales and Service  
Genuine Ford Parts  
Full line of Hunting and  
Fishing Supplies.  
NEWBERRY, MICHIGAN



HERE THEY ARE—THE U. S. GOVERNMENT FREIGHT



Tourist Camp at Sault Ste. Marie Mich.



Among the Islands of St. Mary's River



Dixie Highway near the Soo



Old Fort Brady at the Soo



Profitable bee farm at Rudyard.



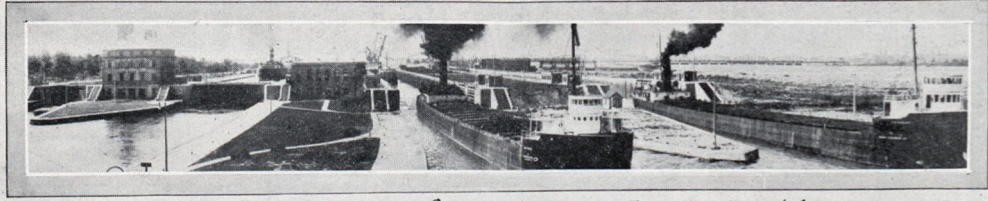
"Some fish"



A Typical Chippewa Farm

# Chippewa County

The World Famed Locks are here



U.S. Government Locks - Sault Ste. Marie Mich.





# LOCKS—AND YOU'VE HEARD OF THEM OF COURSE

## CHIPPEWA COUNTY



So you have associated "The Big Spring," with Schoolcraft; celery, with Luce; Presque Isle, with Marquette, and Old Fort Wilkins, with Keweenaw, so you will doubtless associate one outstanding feature with Chippewa county—the famous locks,—the "Soo Locks," known throughout the world as a most remarkable engineering achievement, and recognized, industrially, for the tremendous amount of freight which annually passes through.

These locks and canals, owned and operated by the United States government, constitute one of the most unique and distinct attractions which Cloverland has to offer. Through these locks passes annually the greatest inland commerce of the world—greater by far than the ocean commerce which passes through the Suez or Panama canals.

The canals and locks afford cheap transportation for the traffic of the Great Lakes. They offer safe passage over the treacherous rapids of the St. Mary's River. Uncle Sam has already spent more than sixteen million dollars in its task of conquering the sixteen foot drop between Lake Superior and the St. Mary's, below the rapids. Projects now under consideration, to further expedite marine traffic at this point, would bring the total to twenty-five million dollars.

Sault Ste. Marie, the home of the locks, is also the terminus of the Dixie Highway, of the roads from Chicago, Milwaukee and Minneapolis to the west, and the Great Northern highway, from Toronto to Sault Ste. Marie, Ontario. Likewise, the "Soo" is the terminus of all important roads leading to the north.

To attempt to detail the varied natural attractions of Chippewa county would be to enter into a lengthy portrayal of all that is beautiful and fascinating in nature—for Chippewa is just that. There are countless picturesque spots along the St. Mary's River, providing unlimited opportunities for the camper. There is Sugar Island, and the summer resort located on its shores. The "old channel" between Sugar Island and Canada is a winding route which follows the international border and which was once the main ship channel between Lake Superior and Huron. A cruise around Sugar Island and through the beautiful portions of the St. Mary's below is one of the most interesting trips which can be taken by the visitor to Cloverland.

Finally—if you have not been stirred by the magnitude of the "Soo Locks"; if you have not been thrilled by the channels of St. Mary's; if the incomparable roads, with their swiftly-changing panorama of scenic effect, have left you immune to response, then be reminded that this remarkable city of the north is the favored hunting ground of Cloverland; it is the favorite "fishing hole" of the peninsula; it is indeed to the living of today what the next world is to the Red Man — a "happy hunting ground," for Chippewa combines every known natural facility for the out-door enthusiast.

### Soo Machine Auto Co.

50c—Storage Capacity 200 Cars—50c

OPEN 24 HOURS

Repairs, Battery and Tire Service

SAULT STE. MARIE,  
MICHIGAN

### MICHIGAN LAND CO.

Frontage, Farm, Timber and Hunting  
Club Properties.

Write

MICHIGAN LAND COMPANY,  
Adams Bldg. Soo, Mich.

### Murray Hill Hotel

European — Modern

RATES \$1.50 to \$2.50

Dining Room Service Unexcelled

A. E. MARRIOTT, Manager

SAULT STE. MARIE,  
MICHIGAN

Choice

RESORT FRONTAGE

and

Summer Cottages.

WALTER WILEY & CO.  
Sault Ste. Marie, Michigan

### Hickler Bros. Garage

One Block from Camp Site  
PHONE 71-W

SOO, MICHIGAN

Carbon Removed. Electric Process  
Score Filling Acetylene Welding.  
Cracks Welded Without Dismantling  
Motor. Cars Overhauled, Repaired  
and Adjusted. Oils and Gasoline.  
Cars Washed. Cars Stored. Free  
Air. Cylinders Reground. Rings,  
Pins, Pistons Fitted.

### SHORE FRONTAGE—ISLANDS

Resort and Hunting Club Properties  
in the

St. Mary's River Country.

CHAS. S. CHIPLEY, Soo, Michigan.  
Est. 1899.



**DETOUR, THE TRIPLE GATEWAY, MICHIGAN**

(SEE MAP FOR LOCATION)

**“SPEAKING OF DETOUR,”**

said a prominent and well known out-door man, “I didn’t realize there was anywhere a place so charming with so great a diversity of interesting things to do.”

At DeTour you can see from your own porch all the huge vessels plying between Lake Superior and the lower lakes pass in a fascinating procession of never ending interest, or in your own boat you can fish or hunt or explore among the beautiful islands of Potagannissing Bay, which lies before you.

On beautiful St. Mary’s River, DeTour is easily accessible by boat or by a little over an hour’s auto drive from Sault Ste. Marie or St. Ignace, yet it is far enough to avoid the congestion of traffic and over-crowded camping places. (Bus service daily.)

Within easy picnicing distance are the romantic and historic remains of British occupation at Old Fort Drummond, old Fort St. Joe and all the islands of Potagannissing, where sheltered bays and harbors are a natural feeding ground for bass, pike, channel perch, and wall-eyed pike. Close at hand are beautiful inland lakes and excellent small game and deer hunting.

It is an ideal place for tired and bored people, where the whole family can just rest and play.

Come and build a summer home or camp or live at some of our comfortable places.

Write **DETOUR BUSINESS MEN’S ASSOCIATION.**

**CO-OPERATIVE STORES**

**All Tourists’ Needs**

Best Brands — Lowest Prices

SOO, MICH.

**KIBBY’S BOAT YARDS**

Headquarters for Boat Service  
Power Boats, Small Boats, Canoes  
One block east of camp ground.

Tel. 530

SOO, - - MICH.

**WYNN AUTO SALES**

**Dodge Cars — Graham Trucks**

Dependable Service

Tel. 770

Johnson and Portage Sts., Soo, Mich.

**SOO WOOLEN MILLS**

Blankets, Mackinaws, Flannel Shirts, Breeches and Pants  
built for the camper.

Men’s, Ladies and Boys’ Blazers with Knit Bottoms.

Corner Ridge and Douglas

TEL. 535.

SOO, MICH.

**Glad to Inform the Tourist**

Cleveland - Chandler — Champion in Performance

Most Miles Per \$ Invested.

Telephone 282

**ROCKMAN MOTOR CO.**

11 Ridge Street

SOO, MICH.



# STOP AT ST. IGNACE—THE GATEWAY CITY

## MACKINAC COUNTY

### ST. IGNACE



WHILE upper Michigan is replete with the land-marks of a fascinating early history, perhaps no other district enjoys as much of that atmosphere as Mackinac County. Here, at St. Ignace—the county seat—is found the grave of Father Marquette, the “Guardian Angel of the Ottawa Mission.”

In 1671 Father Marquette, intrepid explorer and missionary, established a mission at St. Ignace, and it was from this point two years later that the good father, with his brother explorer, Joliet, set out upon their journey to discover the “Father of Waters”.

As you stand there in Marquette Park, gazing at the tall, granite spire which marks the grave of Father Marquette, you are awed by its solemnity and significance. In fact the hills which bound old St. Ignace to the north, east and west, are likewise rich in Indian lore—for the thrilling details of many an early struggle are buried deep beneath their sod.

St. Ignace is the gateway to Cloverland from Lower Michigan and the “hopping off place,” from Cloverland, across the famous Straits of Mackinac. During the summer months, particularly, St. Ignace hums with the activity occasioned by the fact that two state automobile ferries, and two railroad transportation ferries, make regular calls at that port. There is rumor, now, of a third state ferry, to accommodate the ever-increasing tide of summer visitors to Cloverland.

### “THE SNOWS”

To the east of St. Ignace—looking out across the bay—is Les Cheneaux, more familiarly known to the tourist-visitor as “The Snows”. Here is located a group of small islands, in northern Lake Huron, at a point about fifteen miles east of St. Ignace.

“The Snows” have been but little advertised, and, to date, comparatively little effort has been made to attract the visitor to that point. But its popularity has increased nevertheless. Those who came and reveled in the beauty of the place went back and told their families and their friends. New cottages and hotels are springing up. Each year new yachts, speed-boats and smaller pleasure craft appear in the now famous “Channels”.

The trails, leading through the thickly wooded islands—trails but seldom trod heretofore and which offer to the visitor the enchantment which comes only from the deep, green forest—constitute a particular thrill and appeal.

It is for its water sports that “The Snows” is perhaps best known. Each summer season is crowned by a speed-boat regatta, and the day is a gala one indeed. The channels of “The Snows” provide almost unlimited opportunity, and ample protection, for the boating enthusiast. Some of the finest speed-boats to be found along the Great Lakes make their appearance here, regularly, every year.

And for that, as well as its fascinating history, Mackinac is justly recognized and envied.

<p><b>SUNQUIST CABIN</b> Get Our Complete Service On M-12 BREVOURT - MICHIGAN</p>	<p><b>HOTEL NORTHERN</b> ST. IGNACE Invites Your Patronage To Left From Dock</p>	<p><b>Gateway City Garage</b> Largest, Modern, Fire-Proof Storage Garage in Mackinac County Studebaker, Packard, Hudson, Essex</p>
<p><b>THE NORTHERN INN</b> Free Camping Grounds On M-12 BREVOURT - MICHIGAN</p>	<p><b>HOTEL NEW ST. MARIE</b> SOO, MICH. Finest View of Locks Modern in Every Respect SOO, - - - MICH.</p>	<p>Near Hotel and One-Half Block From Mackinac Island Ferry Dock. <b>C. J. MULCRONE, Prop.</b> St. Ignace, Mich.</p>
<p><b>O'NEIL'S</b> Lunches — Soda Fountain Where Tourists Meet On M-12 ENGADINE - MICHIGAN</p> <p><b>ENGADINE AUTO INN</b> Main Filling Station Rapid Repairing On M-12 ENGADINE - MICHIGAN</p>	<p><b>MASSAY HOUSE</b> On Brevourt Lake Central Dining Hall Beautiful Cottages Drive in From Moran on M-12 (See Map)</p>	<p><b>MILLAR'S LODGE</b> Nature's Beauty Spot Meals — Lunches Cottages for Rent On M-12 BREVOURT - MICHIGAN</p>

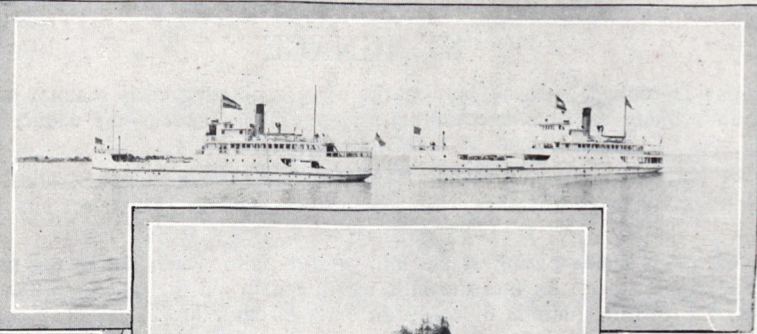


CHARTER A BOAT, EXPLORE THE CHANNELS OF

Girl with a good catch



Shore line Brecoort Lake



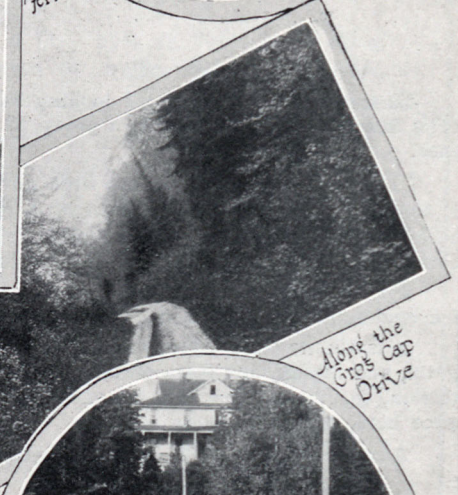
State Ferries



Amalavene picnic grounds Curtis Machine Co.



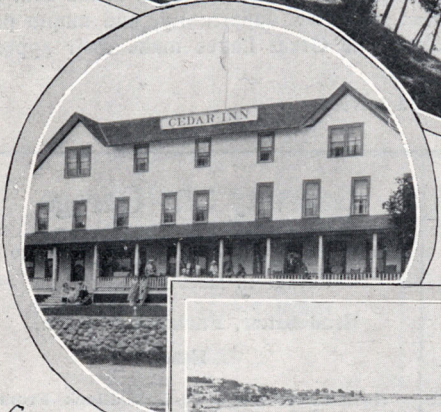
Castle Rock on M-12 near St. Ignace



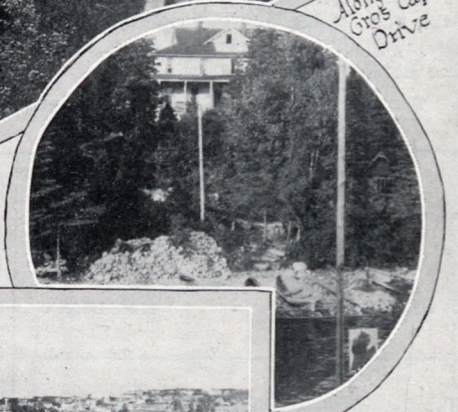
Along the Gros Cap Drive

# Mackinac County

with its wealth and attraction for the tourist



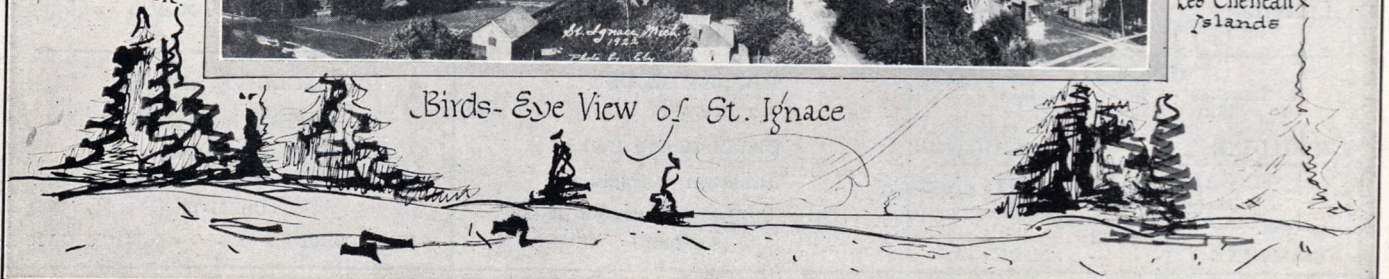
Cedar Inn Les Cheneaux Islands - Mich.



Lake View Hotel Les Cheneaux Islands



Birds-Eye View of St. Ignace





**“THE SNOWS” AND YOUR NORTHERN TOUR IS COMPLETE**

**CEDAR INN**

**At the Central Point of Les Cheneaux Islands—Michigan's Scenic Fishing Resort.**

A home-like hotel where home-cooking is a feature. We raise all our own Vegetables, having a farm in connection. Have our own dairy, where the best of milk and cream are handled in a sanitary manner. Fresh lake trout and whitefish served at every meal. Special terms by the week.

**Write for Further Information or Reservation**

**H. P. HOSSACK & CO., Proprietors and Managers.**

**Cedarville—On M-12—Michigan**

**THE ISLINGTON**

**In the Heart of Les Cheneaux—"The Snows"—Islands, Michigan**

Situated upon a wide promontory of the mainland and almost surrounded by clear, blue waters of bays and channels, is the Islington—literally in the heart of "The Snows."

This attractive and most unusual summer hotel is widely known for its wonderful location, home-like atmosphere, excellent table and service, and its beautiful grounds.

The ideal spot in which to spend a day, a week or the entire summer. All outdoor sports — Tennis, Clock Golf, Croquet, Boating, Bathing. **THE BEST FISHING** in Les Cheneaux Islands. Row and motor boats, expert guides, tackle, etc.

A thirty-mile drive (signs all the way) will take you from St. Ignace or Sault Ste. Marie directly into the Islington grounds. A two hours' delightful ride by steamer from St. Ignace or Mackinac Island lands the traveler at the Islington dock. Individual garages for touring cars.

**R. S. MELCHERS**

**HOVEY'S PLACE — BEAR TRAP LODGE**

Macadam roads from Chicago to our door. Finest fishing in the State of Michigan. Wild game and splendid fruits in season. Real log cottages on the banks of Indian Lake furnished for housekeeping, for rent by day, week or season. See page 38 for local views. Write

**CHAS. S. HOVEY for Details. Manistique, on M12, Mich.**

**LOG CABIN INN**

**Cottages for Rent — Central Dining Hall — Good Fishing — Fine Lake — Boats for Hire.**

Individual cottages per person, one week, \$25. Rooms in main hotel, per week, \$21. Excellent dining facilities. Write for information or reservation. (See pages 38-40 for local scenery.)

**C. G. LINDSAY, McMillan, Mich.**

**NORTON'S RESORT — HOTEL ALBION**

Good boats and guides—Black bass and wall-eyed pike. Free camp sites — Boating, bathing, hunting, fishing. On South Manistique Lake. Turn north from Gould City on M-12 — just four miles. (See pages 38 and 40 for local views.) Write for particulars.

**J. E. NORTON, care Norton Resort, Gould City, M-12, Mich.**



VISIT MACKINAC ISLAND—THE GEM OF GREAT



25 Miles  
of Carriage  
Drives  
on  
Mackinaw



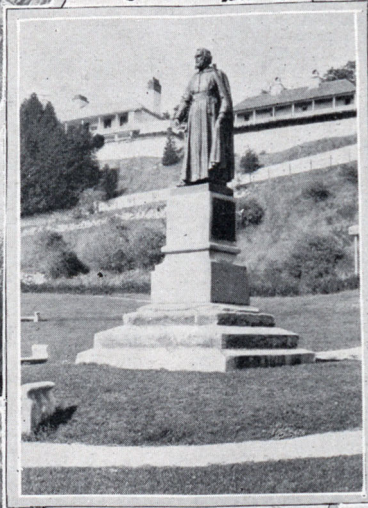
Arch  
Rock Mackinac  
Island



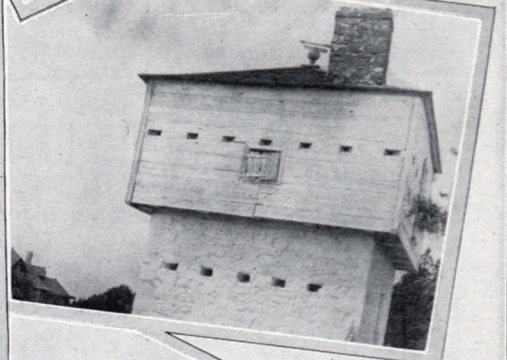
front  
view  
of  
Grand Hotel  
Mackinac  
Island



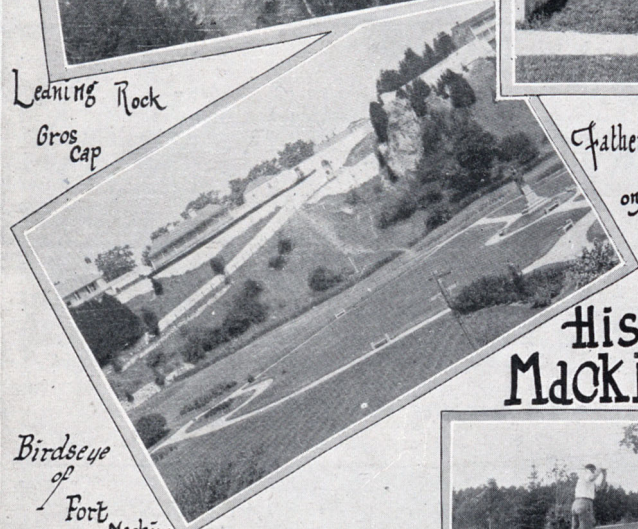
Leaning Rock  
Gros  
Cap



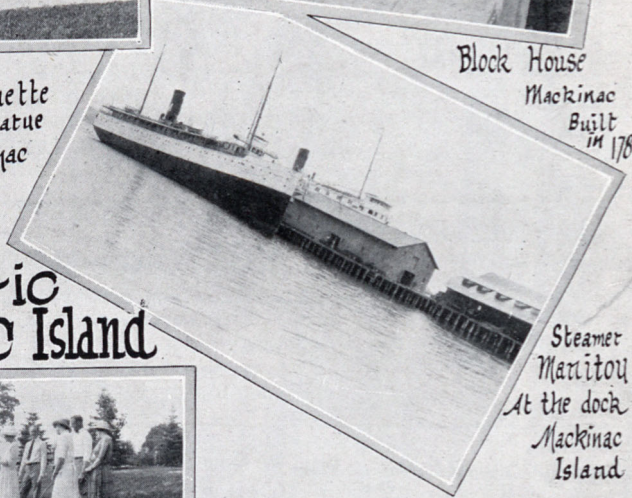
Father Marquette  
Statue  
on Mackinac



Block House  
Mackinac  
Built  
in 1760



Birdseye  
of  
Fort  
Mackinac  
and  
Park



Steamer  
Maritou  
At the dock  
Mackinac  
Island

Historic  
Mackinac Island



On Grand Hotel  
lilks





## MACKINAC ISLAND

Cloverland reaches its "crowning glory" at Mackinac Island—famous old Mackinac, around which more of history and romance has built than any other garden spot throughout the country.

To begin with, Mackinac is historic,—intensely so, and much of the stirring drama which marked the earliest civilization along the south-eastern shores of Cloverland center about this fascinating island. Old Abandoned Fort Mackinac, still in excellent state of preservation, with its ancient markings and staunch walls and block-houses, fairly teems with romantic history.

Climb upon its walls of a cool afternoon; gaze out upon the broad blue of Huron; gaze down into the bay, with the quiet little settlement nestled on its shores; and again—peer down the steep, tree-covered slope below you—then picture it all; the roar of cannon; the enemy ships out there; the landing; the mad rush to the fort; the volley from the block-houses just behind you; the yelling and shouting. And now—quiet and peace.

Mackinac is distinctive for so many reasons and features that to enumerate them would require volumes. Chief among them, however, is the forest—deep, green and silent, through which a myriad trails and drives wind and twist, piercing every nook and corner, and bringing the acme of thrill and pleasure to the visitor.

There are countless spots of scenic beauty—Arch Rock, a natural, limestone arch rising abruptly from the surface of the lake to a height of 149 feet; Sugar Loaf, rising, cone-shaped, ninety feet from the very heart of the forest growth near the center of the Island; Skull Cave, where the fur-trader, Alexander Henry, was secreted by friendly red-skins during the massacre of 1763; Point Lookout, affording a clear sweep of the east and north sections of the Island; Lover's Leap, rising to a sheer height of 145 feet, near the southern shore of the Island—and the charming Indian love-tale that goes with it; Chimney Rock; Devil's Kitchen; Wishing Spring—aye, and dozens of other fascinating bits of historic and legendary interest.

A singular regulation governing the Island is that no automobiles are allowed there—but carriages, seemingly myriads of them, are available for the drive touching the chief points of interest. The drivers have been there for years—they know the story that will satisfy your thirst for knowledge.

Located along the shores and among the hills of Mackinac Island are the beautiful summer homes of the wealthy—families from the larger places who come each year to spend their summers here.

Then the hotels—there are several of them,—of which the Grand, located on a high point and visible even from the mainland, is the largest. This huge structure is maintained solely from the revenue of the three or four months summer resort trade, and it is elaborate in appointment.

You have to see Mackinac; hear its story; wander over its trails; live through its earliest history; contrast that with the gay, lively atmosphere of the place today—to fully appreciate the almost extreme fascination which it holds.

Spend a day—a week—a month—aye, if possible, a summer, at Mackinac, and you will have experienced the thrill of a lifetime.

### **"Fairy Isle"—"Beautiful Isle of Somewhere"—"Emerald Isle"— "The Gem of The Great Lakes"**

Yes, That's Mackinac Island Michigan. — Rich in history and natural beauty. — America's most famous and attractive resort, situated in the Straits of Mackinac, easily accessible from St. Ignace or Mackinaw City, to which points all trunk line highways lead.

**Swimming—Fishing—Boating—Golf (Two Courses)—Tennis—Horseback Riding—Carriage Driving.**

Splendid Hotels, American and European plan, at most reasonable rates. — Cottages to rent. — Many rooming houses and Cafe.

Sixteen hundred forty acre State Park. — Old Fort Mackinac built A. D. 1780. Make Mackinac Island your objective point. — Address any communication to

**MACKINAC ISLAND CIVIC ASSOCIATION,**  
MACKINAC ISLAND, MICHIGAN.



ONLY A DAY'S RIDE TO CLOVERLAND

## The Detroit & Cleveland Navigation Co.

CHICAGO. DETROIT. BUFFALO. CLEVELAND. NIAGARA FALLS. MACKINAC ISLAND.

### DETROIT AND CHICAGO DIVISION:

Every Wednesday, Friday and Sunday between St. Ignace and Chicago.

Every Tuesday, Friday and Sunday between St. Ignace and Detroit.

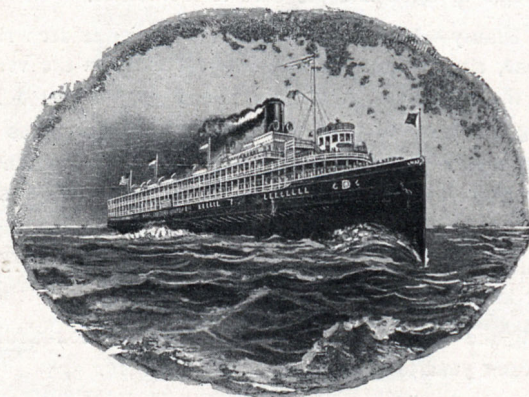
Steamers sail from Detroit to Chicago every Tuesday, Thursday and Saturday.

Steamers sail from Chicago to Detroit every Monday, Thursday and Saturday.

### SEASON OPENS JUNE 24 AND CLOSSES SEPT. 6

Overnight between St. Ignace and Chicago. Overnight between St. Ignace and Detroit.

This line is served by the magnificent express cruisers Eastern States and Western States operating on the fastest schedule ever put into effect between Detroit and Chicago.



From St. Ignace to Detroit steamers traverse the narrow, picturesque channels during the daylight hours and arrive in Detroit early the following morning.

### DETROIT AND CLEVELAND. DETROIT, BUFFALO AND NIAGARA FALLS

Steamers Greater Detroit and Greater Buffalo, the largest ships afloat on fresh water, sail from Detroit daily at 5:30 P. M. for Buffalo and Niagara Falls, arriving in Buffalo the following morning at 8:30 A. M. Steamers City of Detroit III and City of Cleveland III, second in size and speed only to the Greater Detroit and Greater Buffalo, sail daily at 11:30 P. M. for Cleveland, Ohio, arriving the next morning at 6:45 A. M.

### AUTOMOBILES CARRIED ON ALL STEAMERS

If you plan an automobile tour in the west or in New York and the East include the wonderful lake trip offered by the D. & C. Lake Lines to Chicago or Buffalo. Your automobile travels on the steamer with you and the cost of transportation is very reasonable.

Send for descriptive booklet giving full particulars of many attractive lake tours.

**R. G. STODDARD, G. P. A.,**  
Detroit & Cleveland Navigation Company,  
Detroit, Michigan

**S. P. ARNOLD, Agent,**  
Mackinac Island, Michigan

**J. F. LaBRECHE, Agent,**  
St. Ignace, Michigan



FOR INFORMATION — WATCH FOR THE CLOVERLEAF SIGNS

**GOLF.**

For those who are interested in golf, the links at the following communities are open to the visitor: Menominee, Escanaba, Ishpeming, Houghton, Ironwood, Iron Mountain, Sault Ste. Marie, Mackinac Island and Manistique and Munising. New golf courses are being built at St. Ignace and Crystal Falls.

**SCHEDULE OF STEAMERS ST. IGNACE AND MACKINAW CITY. CENTRAL STANDARD TIME.**

Lv. St. Ignace.	Lv. Mackinaw City.
6:00 A. M.	7:30 A. M.
9:00 A. M.	10:30 A. M.
12:00 M.	1:30 P. M.
3:00 P. M.	4:30 P. M.
6:00 P. M.	7:30 P. M.
When Traffic Warrants.	
9:00 P. M.	10:30 P. M.

**RATE FOR STATE FERRIES. MACKINAW CITY TO ST. IGNACE.**

**Passenger Cars.**

13 ft. and under	\$2.00
13 to 14 ft.	2.50
14 to 15 ft.	3.00
15 ft. or more	3.50

**Trucks.**

1 ton and less	\$3.00
1 to 2 tons	4.50
2 to 3 tons	6.00
3 to 4 tons	7.50
4 tons or more	9.00

**GOODRICH TRANSIT CO.**

**Between**

Chicago Milwaukee  
Mackinac Island Grand Rapids  
St. Joseph Benton Harbor  
Holland Grand Haven  
Muskegon

Apply for Reservations or Information of Any Agent.

Park Robbins, Pass. Trf. Mgr.  
Chicago, Ill.

**ANN ARBOR RAILROAD PASSENGER AND TRANSPORT SERVICE.**

Fare between Manistique, Mich., and Frankfort, Mich.	\$3.00
Fare between Menominee, Mich., and Frankfort, Mich.	3.00
Fare between Kewaunee, Wis., and Frankfort, Mich.	3.00
Fare between Manitowoc, Wis., and Frankfort, Mich.	3.00
Stateroom	3.00
Lower Berth	1.50
Upper Berth	1.50
Meals	.75

**AUTOMOBILES.**

**Open or Closed Cars.**

Under 114-in. Wheel Base	\$ 9.00 each
114-in. Wheel Base or over	11.00 each

**ARNOLD TRANSIT EXCURSIONS.**

The Arnold Transit Company, of Mackinac Island, operating three steamers, maintain a schedule of service and excursion trips which not only include regular connections with the mainland at St. Ignace and Mackinaw City, but to and around Mackinac Island, and through the beautiful channels of Les Cheneaux, or "The Snows." An inquiry addressed to the Arnold Transit Company, at Mackinac Island, Michigan, will bring full particulars relative to schedules, accommodations and rates.

**THE GREAT LAKES CRUISE.**

The Great Lakes Transit Corporation, 223 Erie Street, Buffalo, New York, will operate passenger boats from Cleveland to Duluth and return, stopping at Detroit, Mackinac Island, Sault Ste. Marie and Houghton, during the summer season. Complete information regarding the trip can be secured by writing the above named company direct.

**THE SOO LINE**

IS THE LINE TO THE

**LAND O' LAKES**

To summer vacation in the north woods, take the Soo Line. To a holiday where there is boating, swimming, fishing, canoeing, golf, hiking, take the Soo. To summer hotels, to lodges and camps, to farm houses where you get great board and a comfortable room at reasonable cost, take the Soo. Ask for Soo Line literature about summer resorts in Upper Wisconsin.

*For New Folders, Maps and Game Laws*

Address:

H. M. LEWIS

General Passenger Agent  
Minneapolis, Minn.



**Cut Over Lands for Farming**

**Summer Homes**

**Hunting and Fishing Camps**

For Sale by

**I. Stephenson Co., Trustees  
WELLS, MICH.**



# Cloverland

Upper Peninsula of Michigan

## The Tourist's Paradise

