

From Wood to Steel ...

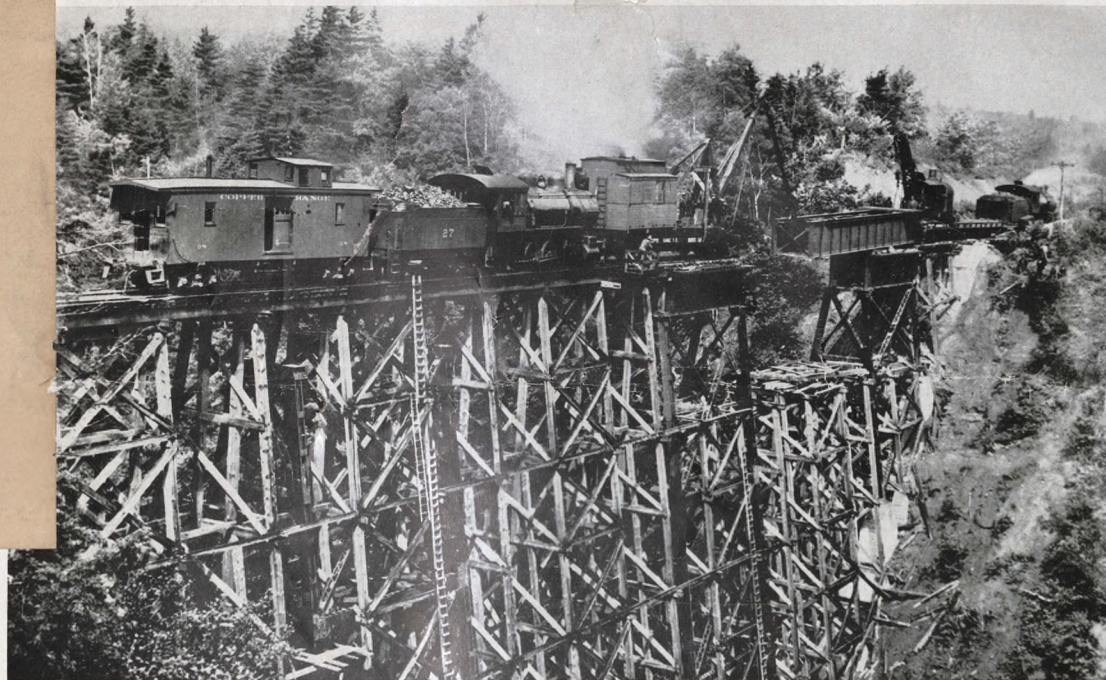
Steel girders replace timber as the old gives way to new on the Copper Range Railroad Bridge, Houghton County, Michigan.

A bridge, any bridge, whether of wood, stone or steel is a link that knits the earth together . . . making a pathway across space for mankind.

The conversion of the Copper Range Railroad Bridge from wood to steel, so graphically shown here, took place in 1910, half a century ago. Here is a nostalgic reminder of early day progress in transportation construction that was changing the romantic relics to meet the speed and urgency of today's commerce. Copper Range Railroad Bridge No. 30 spans Douglass Houghton Creek, in Houghton County, Michigan, and is 337½ feet long . . . an excellent example of durable steel construction and engineering skill.

We are pleased to bring you this interesting early day "symbol of progress" on our 1960 calendar as a reminder of Gitche Gumee Oil Company's continuous dedication to improve its products and its service for you.

May the New Year bring good health, happiness and prosperity to you and yours.



"FROM WOOD TO STEEL"

GITCHE GUMEE OIL CO.

MOBILGAS AND MOBIL PRODUCTS • QUALITY COAL

"With Friendly Service"

ONTONAGON, MICHIGAN

PHONES

BARAGA OFFICE EL 3-5300



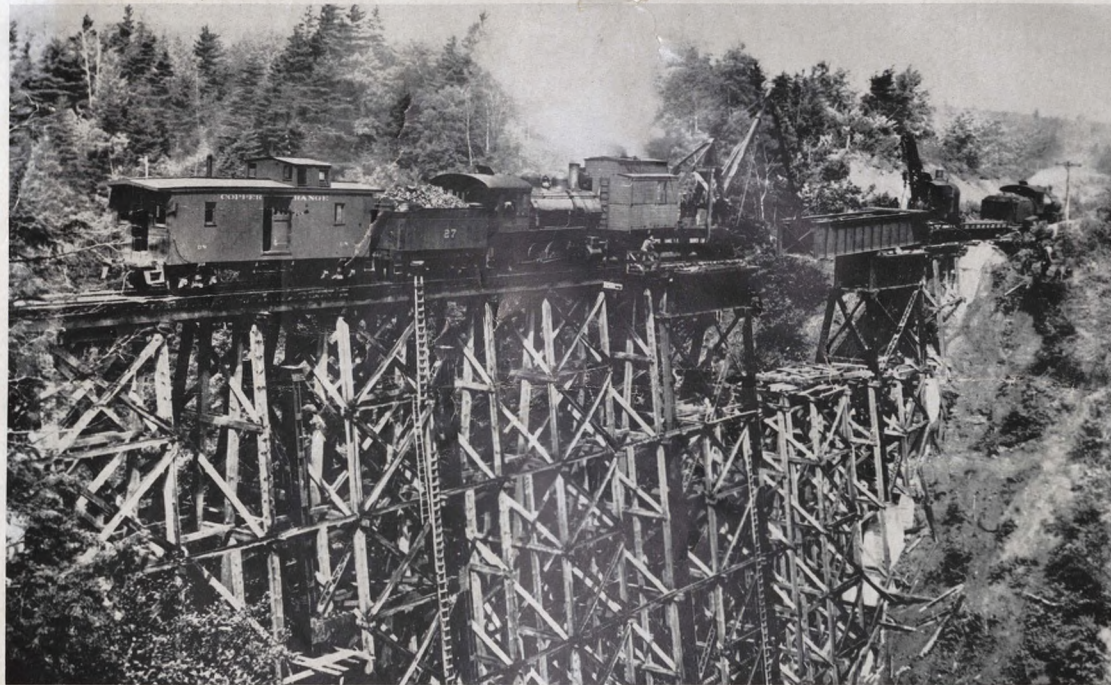
L'ANSE STATION 200



BARAGA BULK EL 3-5135



PHONES
ONTONAGON OFFICE 68
★
MASS 4651
★
HOUGHTON 267
ONTONAGON STATION 9008



"FROM WOOD TO STEEL"

PHONES
BARAGA OFFICE EL 3-5300
★
L'ANSE STATION 200
★
BARAGA BULK EL 3-5135



GITCHE GUMEE OIL CO.

MOBILGAS AND MOBIL PRODUCTS • QUALITY COAL

"With Friendly Service"

ONTONAGON, MICHIGAN