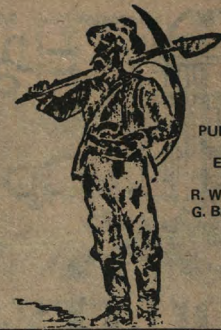


# NONESUCH NEWS

PHONE  
885-5557

P.O. BOX 51  
WHITE PINE, MI.



PUBLISHED  
&  
EDITED  
By  
R. W. POWELL  
G. B. POWELL

*Differing Opinion and Controversy Not Only Make Life More Interesting But Provide The Mechanism For Finding The Real Truth. Controversy Is Equally Healthy For A Publication; In Fact, It Is Necessary For One Which Is Dedicated To Objectivity And Willing To Respect The Views Of All Responsible Citizens!*

WHITE PINE, MI. 49971

VOL. VI - NUMBER 39

SEPTEMBER 27, 1978

TWENTY FIVE CENTS

## State Bar Unit Dismisses Charge Against Briggs ...

IRON MOUNTAIN - A panel of the State Bar Grievance Board, composed of his peers - all fellow attorneys - dismissed a charge against Ontonagon County attorney Allan R. Briggs at a hearing held here on September 18th.

Briggs had been accused of making improper advances toward Keith Koski, Houghton. Koski was 16 years of age at the time the alleged offense took place. He is now twenty-two.

Briggs denied the allegation and was supported by eight character witnesses, who testified to his reputation for truthfulness.

Testifying on Briggs' behalf were: Frank Domitrovich, Rev. John Eilertson, Wilfred Schoen, and Charles Willman, all of Ontona-

gon; Maxwell Little, Baraga Police Chief; Probate Judges Garfield Hood, Baraga, and Timothy Mahoney, of Gogebic County; Eugene R. Zinn, District Court Judge for Gogebic and Ontonagon counties.

Robert Hansley, chairman of the panel, who served with Leslie Fisher and Steven Barstow, has been quoted as saying that the fact that this was an isolated incident weighed heavily with the panel, as no evidence of a second or repeated offense had been presented.

Hansley was further quoted as saying, "If I were ever in trouble I would love to be able to have people of that caliber say a good word for me."

## Sparks Fly Over Tax Equalization

ONTONAGON - The long-standing frustration with the state's property tax laws - which interfere with local government's property valuations erupted at the Ontonagon County Board meeting last week.

As a result, the county board - on a 3-2 vote - decided to advertise for a Level III equalization director in the hope that a new director would somehow be able to cope with the state tax tribunal whose job it is to see that local property valuation levels are kept high enough to minimize state aid to schools.

Acting upon the written request of the county chapter of the Michigan Townships Association, the board decided to replace the present equalization director, Mrs. Vi Brusso, in spite of the fact that the state tax tribunal had recently affirmed the 1978 county equalization and had thrown out the petition of nine of the county's eleven townships. Those townships had been seeking a change in the county figures.

Commissioners Piper, Huhtala and Erickson voted in favor of the change of equalization director while Commissioners Maloney and Amos favored retaining Mrs. Brusso. The board chairman, William Chabot, was again not present at the session.

Mrs. Brusso, who has not as yet obtained a Level III certificate, and who will continue in the post until a successor is chosen, told the meeting that she would not be "a rubber stamp and would not play politics with the state" in performing her duties. She thanked the board for having given her the opportunity to straighten out the county's equalization problems but added that she would not bow to the political pressure of the board or anyone else where her public duties were involved.

In voting against the motion for the personnel change Commissioner Amos stated that he could not accept the principle of hiring a Level III assessor to "play politics with the state." In his objection to the move, Clarence Maloney queried Leslie Curtis, representing the Township Association on the reasons why all township supervisors had not become certified assessors as promised a year ago. Curtis had a

number of excuses in this regard and also remarked that the supervisors wanted a Level III equalization director installed to get "the state off our backs." That statement seemed to corroborate Mrs. Brusso remarks regarding "playing politics" with the position of equalization director.

A portion of the general meeting was devoted to a hearing on proposed use of federal revenue sharing funds. Among groups approaching the board for consideration of uncommitted revenue sharing funds were representatives of the county's emergency medical technicians from the Bergland area who sought assistance in obtaining an ambulance to serve that end of the county. The county ambulances are now located two in Ontonagon and one in Bruce Crossing and the EMT's pointed out the difficulties experienced with trying to schedule an ambulance for an emergency call from one or the other of those locations to the far end of the county. No satisfaction was given the group although the board did say the matter could be further discussed in upcoming budget deliberations. The board's position in the past has leaned toward contracting with a private ambulance service within the county.

Also seeking revenue sharing monies were township supervisors from eleven townships who asked for consideration for road work in their individual areas; the president of the County Tourist Association who requested funds in the amount of \$4,720 for billboard and other advertising of the area; the Gogebic Ontonagon Community Action Agency; and a representative of the western U.P. substance abuse organization who sought additional funds for application to existing and new programs in the five-county area.

In other action taken at the meeting the board voted to continue the elderly and handicapped busing program, authorized the vice chairman to "sign papers" to allow continued progress of the airport project; appropriated monies for the county Commission on Aging in the amount of \$2,500, authorized county clerk Bernice Huotari to attend a session of

the legislative committee of the County Clerk's Association; rescinded a previous action taken on Sept. 11th at which commissioners had cut back on CETA employment because of word that funds would be unavailable; and set the date for the first day of budget hearings for October 10.

## Former Ewen Girl Stars in The Great Northern Opry

EWEN - Ginny Benson, formerly Virginia Meyers of Ewen, will be a featured performer on Friday, October 6th as the Northern Opry comes here for a performance at the Ewen-Trout Creek high school gym.

The 1954 graduate of Ewen High School is also one of the co-founders of the Great Northern Opry.

An outstanding musician and vocalist, Ginny has been involved in country music for many years, playing the midwest circuit with her husband Chet as "The Chet & Ginny Duo."

The petite housewife, musician and mother of seven has with her husband, Chet Benson of Iron River, founded "The Great Northern Opry," a country music stage-type show that is by all measurements the largest concert type country show north of Nashville.

Her first love being country music, Ginny started playing the accordion in her mid-teens and later taught accordion in Ewen before her marriage in 1956. Being a fine vocalist Ginny has pleased countless numbers of fans with her soft, smooth voice and her booming yodel.

Her performance at the Ewen Log-Jam-Boree on October 6th at 7:30 p.m. will be a sort of mini-homecoming for Ginny for she has many friends and schoolmates still in the Ewen area.

Chet and Ginny also plan on using a picture of the Ewen Load of Logs on their new album to be released in December.

Tickets for the 'Great Northern Opry' are now available from area business places and the Ewen Civic Association members. The Opry is scheduled to kickoff the fun-filled Log-Jam-Boree weekend on Friday evening.

In addition to directors Chet and Ginny Benson of Iron River, numerous other guests will perform with the featured star of the evening to be Kenny Roberts, a world-champion yodeler.

Adult tickets are \$4.00 in advance and \$5.00 at the door. Ticket will also entitle the holder to attend the dance in the O'Rourke Hall later that evening. Student tickets are \$2.00 in advance and \$2.50 at the door and may be purchased in the Community School office at any of the Ontonagon County high schools.

### THOUGHT FOR THE DAY

Between two evils, I always pick  
the one I never tried before.  
MAE WEST

2022. 16. 79





# Frankly Opinionated

## COUNTY BOARD HIT WHERE IT HURT ..... MUCC CRY'S CROCODILE TEARS

ANOTHER PORTRAIT IN PROSE FROM THE INIMITABLY CARELESS PEN OF Kenneth S. Lowe, editor of "Michigan Out-of-Doors" magazine, graces pages 82 and 83 of the October issue of the Michigan United Conservation Club bible.

In this instance, Mr. Lowe attempts to explain to subscribers throughout this state and others how Ontonagon County residents, through their Board of County Commissioners, have denied a "priceless land gift" to "the citizens of Michigan."

Not only are Mr. Lowe's statements warped in the usual direction - toward further increasing state land holdings in the U.P., but this time even a less-than-logical mind would have difficulty accepting his labeling of the transaction in question as a gift to the people!

First the facts in the matter and then a few of the allegations Mr. Lowe would like his readers to accept as facts.

The state's largest private landowner - the Mead Corporation - and the Michigan Department of Natural Resources have been negotiating over a TWO YEAR period for acquisition by gift and purchase of over 11,000 acres of Mead lands in the Upper Peninsula. (Mr. Lowe terms the acreage in parcels ranging from 6,000 acres in Ontonagon County down to much smaller pieces in Schoolcraft, Baraga and Iron counties - as "strategic" and "choice" recreation lands. Included in the gift parcel said Mr. Lowe are "Lake Superior shoreline, frontage on inland lakes and streams, several parcels used as deer yards and others valued for blocking in state forest holdings.")

Several months ago the Ontonagon County Board of Commissioners was made aware of the proposed land transfer at one of their meetings by a concerned citizen. That citizen's concern, shared by many others, stems from a reasonable fear of and objection to further acquisition by the DNR of private lands in the U.P. The paranoid rush to lock up more and more land in state and federal ownership is not, however, just a local issue but one which is being debated in all areas of the nation today by ever-growing numbers and with ever-increasing frequency.

In reaction to the news of the proposed Mead-DNR deal, the local board made inquiry of Mead officials and expressed displeasure over the land transfer. . . adding that if the lands were to be gifted the county itself might be a more appropriate recipient than the state. This development, according to subsequent news releases, resulted in Mead's withdrawal of the 6,000 Ontonagon County acres from the total gift proposal and a company decision to confer with local units of government in the remaining counties involved regarding its offer to provide lands to the state.

Mr. Lowe says in his article that the initial plans called for the land to come into state ownership in September of 1977 "but questions raised by Upper Peninsula legislators and Ontonagon County commissioners have delayed completion of the transfer indefinitely." How very irritating not to have things go according to schedule, Mr. Lowe. . . but, on with the story!

The real meat of the land transfer to the DNR never was explained to local officials and certainly not to the public, but - thanks to Mr. Lowe - here is what is behind the "priceless GIFT to the people of Michigan.":

Over two years ago officials of the U.S. Bureau of Outdoor Recreation (BOR), since renamed the Heritage & Conservation Service under the Carter Administration, approached the Mead Corporation to ask if the company had any surplus lands it might consider giving to various governmental units. (These tax-dollar-paid lobbyists within our government are out actively soliciting take-over of more and more and still more lands by the federal/state complex!!) The BOR program - again funded by YOUR tax dollars - works like this: 50% of the total cost of any qualifying recreation program is paid as matching funds by the federal government; the appraised (by whom?) value of lands donated to the state (or other unit of government) can be used as the funds to be matched. (Preliminary appraised estimates placed the total value of Mead properties included in the original 11,000-acre package at \$1.5 million.); the donating party would be able to charge the value of the gifted lands against its tax payments.

Following the original contact, Mead reviewed its holdings in the U.P. and chose a number of parcels it considered not of great value for logging purposes but with high potential for public recreation. (One would have to possess the charity of a Christian martyr to believe that MDNR had not been heretofore involved.) According to Lowe's report Mead and BOR held discussions resulting in a determination that most of the land could be best used by the state while the balance "might better be given to the federal government."

If you're beginning to smell a skunk, put a clothespin on your nose and read on. . . because it only gets better (worse).

Some of the lands included were owned by Mead's pension trust and as such could not be gifted but must be sold with proceeds going into the pension trust fund. Enter the White Knight. Mr. Lowe goes on to patiently explain that "since the state did not have the necessary funds on hand to cover costs of these lands, The Nature Conservancy (da da da-da-da!!) enters the scene. Mr. Lowe describes that group of special interest land merchants as follows: "The Conservancy is a highly respected non profit national organization established to acquire important natural lands for public use and enjoyment." The plan was for the Conservancy to purchase the Mead pension trust lands from its reserves (chuckle, chuckle) and hold them in trust "until the state was in a position to acquire them." At this point one is obliged to pause and salute the ingenious maneuvers which government is using to justify what is, in fact, a classic example of the type of deficit spending so rampant in government today. Up the road a piece - when and where nobody in particular is paying attention - the legislature simply slips in a "teeny-weeny" line item

(Continued - Page Three)

## BWCA NEWS

. . . Good friend and fellow reporter Elayne Maki of Deer River, Mn. - an astute analyst and dedicated worker for the cause of property owners' rights and against some of the less savory accomplishments of a number of federal agencies - in her weekly column for the "Western Itasca Review" entitled 'SPARKS from the TINDERBOX' included an editorial from a neighboring paper in one of her recent reports. We intend to share some of Elayne's own words of wisdom with readers in coming weeks....but the following is a timely tribute to the hard work, long hours and great effort put forth by thousands of just-plain-fed-up folks around the country over the course of the last months when the RARE II siege was upon us! Since the Forest Service has made it plain that the great opportunity offered the public - "to share in its destiny" - will end with the close of the comment period on Oct. 1, the words of Bob Cary as printed in the "Ely Echo" on August 23, 1978 will give notice to the employees of the people....the agency staffers, the top guns of bureaucracy, the U.S. Congress and the President himself....that we have not spoken our final word nor made our final comment!

"The facts are, we got our brains beat out.

That is, for the 1978 BWCA conference title.

Anybody who has ever played a team sport knows that sometimes you lose. Losing is not a fun experience. It is worse when the game is fixed. In the current case we were playing on the home field and the opposition not only got to set the rules but they brought their own refs and scorekeeper.

Even the first half was a disaster. When our first team, under Captain Jimmy Oberstar, got buried it looked like we might make a second-half comeback with co-captain Wendell Anderson. Wendell, it must be pointed out in all candor, is a realist. After limping back to the huddle for the umpteenth time, he figured there was no more yardage to be gained in the middle of the line. If there was anything left, it was time to throw. So the team sent in quarterback Ron Walls.

Walls, it must be pointed out, does not lack for courage. We sent him off the bench with two minutes left in the game and four touchdowns behind and said, "Ronnie, baby, win it for the homefolks."

Ronnie gave it a good try.

He threw. God knows he fired passes all over the field, but there was no way to overcome that big a deficit. Besides, our long gainers got called back by those lousy refs. On top of that, the crowd booted. You have to admit that our team was not exactly exalted by the sportswriters. About all we had was spirit. It was frustrating that the sportswriters didn't care about that.

Here we were, a bunch of amateurs in shabby uniforms, outweighed 20 pounds to the man, up against the best pro team money could buy and the sportswriters made us out the heavies. You've got to admit our opponent's public relations job was a lulu.

We know how that game went but we don't have the official score yet. When the game ended, the opponents took the scorebook with them. They also took our popcorn stand and all the ticket money. And they padlocked the stadium, too. But the Congress is the official scorekeeper and they haven't come up with a decision yet. See, there have been a few protests lodged about the game. Fact is, Lynn Laitala and Duane Krause went down last weekend and talked with a few of the official scorers and they aren't sure the game was on the up and up. There is even some talk that we may have to play the game over.

Now there isn't anybody on the team who wouldn't like another crack at the opposition, particularly since we know their plays now. There are a few fans who have thrown their hands up in the air and say Wendy lost it or Jimmy lost it or Ronnie lost it, or somebody lost it. Anybody can play the game better from the stands. Let's give those guys their due and say they played it the best they knew how. Hey, let's face it, the other team was clipping, in motion and offside on every play and the refs never blew the whistle once. We fielded the best team

(Continued - Page Three)



in a huge appropriation bill and Presto!! Mission accomplished. And that way the simple folks don't have to bother their heads about it. Maybe the final acquisition cost to state taxpayers for the free priceless gift is even established in advance. But, you know, what with inflation and all, it's hard to tell just how "priceless" it will be at that point.

Some place along the way the good old guys at DNR's Land Acquisition offices suggested to Mead that they - Mead - discuss the proposed transactions with U.P. legislators, as legislation would be necessary for the state to accept the land and also because legislative approval would be necessary for those specific projects involving BOR grant monies. (A shining example of thrift on the part of DNR officials as the public relations effort was now in Mead's pocketbook and on its neck.) Rep. Russell Hellman, D-Dollar Bay, is purported to have raised a ruckus over this whole affair for several of the right reasons; unfortunately, he did neglect to communicate to the Ontonagon County Board of Commissioners the fact that such negotiations were in progress.

About now the Mead people begin to suffer from a rash brought on by reaction to the reaction! (You'd think some friendly soul would have warned them of the prevailing attitude of ingratitude and distrust with which Ontonagon County citizens view such acts of "goodwill.") In any event Mead took its 6,000 Ontonagon County acres back and left the DNR, the BOR, the White Knights at Nature Conservancy, and those unnamed grantees in the federal government with a faint but still-alive hope of salvaging the remaining parcels of the original offer. With the best interests of Michigan's citizens motivating them, they surely will never say die!

The cherry on top of this super sundae is Mr. Lowe's argument to the question raised of loss of tax revenues by local units of government resulting from such a private to public transfer of lands. It is a thesis in stupidity or perhaps better phrased a thesis for the Stupid. He points out that with the signing of Senate Bill 189 in July the rate of payments by the state to local units on the in-lieu-of-taxes (swamp tax) basis has been increased to \$1.50 per acre. He makes no mention of the many years that those local units struggled with payments that were far too low in relationship to other similar lands remaining on the tax rolls. The increase is fine and long overdue but it is hardly a justification for the state to step up its pace in grabbing off thousands of acres more. Neither does Mr. Lowe mention that his magazine/organization fought a vigorous and sustained battle against the increase in lieu-of-taxes payments and had many a nasty word for the bill's sponsor, Senator Joseph Mack of Ironwood. Lowe ends up in his own mousetrap when he attempts the following comparison: "As a matter of fact," he states, "if the 11,000 acres Mead had planned to donate were given to the state now, income to the counties involved would increase from the \$7,368.25 the company currently is paying in taxes on these lands to \$16,902.62 that 'the state' would be required to pay in lieu of taxes under the \$1.50 per acre rate." Dear, sweet, simple Mr. Lowe... who do you think pays the bills for the state and do you believe all of us are still oblivious to what tax concessions are all about and how they impact on a total tax picture? Furthermore, who do you think pays the bills for the federal government and its beneficent programs including the BOR grants? And, finally, dear, sweet, simple Mr. Lowe, who are these citizens of the state of Michigan who were or are to receive this priceless gift? We hope you do not presume for those great numbers of us who have had enough of such kindly acts of goodwill.

Mead Corporation is not accused of being the villain in this scenario... a trifle socially irresponsible for a time, perhaps, but no villain.

The villainy was and is being perpetrated in our state legislature and bureaucracies and in their counterparts on the federal level. And, to make the villains more formidable, they now work in concert and co-operation in deceiving and defrauding the American people.

If this were an isolated or localized incident citizens could let out a howl or two and then go back to the business of making a living. The truth is that similar proposals are in the works constantly and everywhere... and, in the great preponderance of cases the general public is being kept totally in the dark until after the fact has been accomplished.

The privileges of our democratic government can be maintained only with full acceptance of the partner responsibilities. Let's hope there is always at least one private citizen who recognizes responsibility and acts on it, as in this case, and one governmental body to react to the alert sounded, as did the county board... and let's hope they continue to act in time.

The framework for accountability and responsiveness to the private sector has been created over our two-hundred year span of history, beginning with our Constitution and Bill of Rights.

When action is not taken nor opposition expressed to a situation that cries out for both then we threaten that framework of freedom and individual rights. We abdicate our privileges when we ignore our responsibilities and cease to be a government of the people, by the people and for the people. Our government is now and will continue to be largely a reflection of ourselves and of our national character. To have it function as it was intended we must be willing to spend the effort to fix it when it breaks down... and take the time to discipline it when it strays off course! End of lecture.

## RUPPE SAYS CARTER WAFFLING ON SEAFARER-ELF

WASHINGTON - A statement by Navy Secretary W. Graham Claytor that a site decision for Project ELF is six to eight weeks away has been labeled by Congressman Philip E. Ruppe, R-Houghton, as "a political gimmick." Ruppe has been the leading Congressional critic of the Naval communications project.

"President Carter has been waffling on a Seafarer/ELF site for almost two years," Ruppe said. "A delay of another two months is simply another reverse in the absurd political football game the Navy and the Administration are playing."

Ruppe called on the President to make an immediate ELF site selection.

"There is absolutely no reason, except political, for waiting until after the November elections," Ruppe declared. "A choice must be made to end the uncertainty and it must be made now." Ruppe stated that it was his hope that the Administration would heed the advice of the House Armed Services Committee and consider other alternative technologies. If the President insists on going ahead with the project, Ruppe said he "hopes he will reject the

Navy's recommendation of a Michigan site and instead choose Wisconsin which already supports an operational test facility and is admittedly the Navy's number one choice."

Ruppe continued his statement saying that "placement of ELF in the Upper Peninsula will be a serious breach of trust by President Carter who promised not to build the system against the wishes of the people." He added that the ELF system is one the Navy could easily expand to a bigger scale in future years.

"The only guarantee this expansion will not come to be is for the Navy to build their system elsewhere," added Ruppe. "Contrary to Mr. Claytor's remarks, ELF is indeed the stepchild of Seafarer and Sanguine."

While \$20 million has been authorized for design and development of the ELF system in fiscal year 1979, the House Appropriations Committee has limited the Navy to \$2.4 million and recommended that those funds be used only for the operation of the Wisconsin test facility.

The final outcome is still not known as the Senate Appropriations Committee has not completed deliberations on the Defense bill.

we could on short notice and that team played a heck of a game against pretty tough odds.

Now there are a few people who want to tear up the stadium and quit. This might have some merit if the stadium wasn't in our own backyard. Also, it isn't the last game. Now, depending on the Congressional scorekeepers, we may have to play that particular game over. But regardless of that, there are a lot more games coming up. It may just be that the other team won't be that tough next time... or we will be a little tougher. And maybe the refs won't be fixed and maybe the press and the public will look a little more closely at the game instead of the color of the uniforms. We've still got a pretty good team. It's got some experience and it might be that the coaches will come up with a better bunch of plays.

Frankly, I want to stay with the team and get ready for the next game!"

## MORE ON MEAD

L'ANSE - Units of government in Baraga County have been offered approximately 1,600 acres of land for recreational use by a company that does business in the county.

Mead Corp. Woodlands Manager Lynn Sandberg appeared at a recessed meeting of the county board ... to explain the donation.

Sandberg said the company wanted the complete approval of the board before it went ahead with the plan. A good deal of the land (1,200 acres) is located in the Craig Lake area.

Clerk Bernard Lambert said the in-hand donation may enable the county to be eligible for a federal recreation grant. The board will look into the offer before giving its approval.....

(Houghton Daily Mining Gazette - 9/19/78)

## U. S. F. S. SAYS

## MISINFORMATION HURT RARE II

ESCANABA - Public acceptance of U.S. Forest Service efforts to have Congress include 100,000 acres of Upper Peninsula land in a wilderness program has been hurt by misinformation, said Robert Burton, coordinator for the proposal in the Ottawa National Forest, headquartered in Ironwood.

The inaccurate statements and rumors have affected the second Roadless Area Review and Evaluation (RARE II) undertaken by the federal agency. Burton was quoted as telling members of the U.P. Chapter of the Society of American Foresters at a meeting held at Bay De Noc Community College here recently.

The RARE II plan has sparked a national environmental debate that has included the U.P. because of twelve sites in the area which have been proposed for possible wilderness designation.

The news release reporting the statements by Burton concluded with the reporter's explanation or interpretation of the purpose of RARE II. "Specifically, the question that must be resolved is to what extent can the forest products industry, and the public which uses its products, depend on public lands as a trustworthy source of timber.

Burton was not quoted as listing any specific areas or groups to whom he attributed the purported misinformation and rumors, nor was any counter statement given by Burton to refute what he termed as inaccurate or rumor.

Official public comment period for the EIS and RARE II closes on October 1 as far as the public's opportunity to provide input to the U.S. Forest Service. However, following assembly of the final recommendations by that agency they will be turned over to the Congress around the first of the year for deliberation there. At that time citizens and groups who chose not to make their comments to the Forest Service will have the opportunity to carry on an intensive lobby for or against the Wilderness proposals.

A weekend national network television news-cast concerning the RARE II program reported figures released by the U.S. Forest Service to date show that over 30,000 letters containing comments on the highly-charged issue had been received with sentiment against the wilderness designations running at 75 percent of the total.





Mike Peters, Dayton Daily News



Two recent cartoons express it all: 1) A robber stands holding a gun in front of a man and woman. The couple's hands are raised. "This is a stickup, monsieur!" demands the robber. The man stutters, "B-b-but, we are tourists! All we have is American money." "Sacre bleu!" states the now-sad robber. "Here's a few francs to tide you over!" 2) The setting is a typically German street. A large robust-looking German stands smoking a big cigar. He is looking down at a rather threadbare and sickly U.S. Dollar. The Mark asks, "You want a chocolate bar, kid?"

To many Americans the weakening dollar in the world marketplace has been a factor tied only to national problems: an extremely poor trade balance; energy policy that's stymied; continued administrative uncertainty. However to a smaller, though increasing number of persons in the know, the declining dollar emphasizes a new fact of life: they are owned by "foreigners."

Those of us antique enough remember when the dollar was supreme! It could buy anything and usually did. Back then the American greenback was the symbol of stability going everywhere overseas to invest, to acquire, and to build. Now the shoe appears to be on the other foot and it hurts!

Some may criticize and say, "After all we did for them!" Others comment in reply, "They have more faith in our industry than we do." The fact is an ever increasing number of investors in American business, industry, agriculture and land and other resources are dominated by foreign control.....and more such moves will be forthcoming.

Underlying it all is the fact that the U.S. is regarded as the biggest and richest market in the free world with political stability, comparative freedom from controls, and holding the strongest of growth potentials. If that is not enough for recognition and attraction by domestic interests, then "others" — unfortunately now strengthened by a weakened dollar position quite possibly brought about by deliberate governmental policy — cannot be faulted for their faith in taking investment action in this — the most dynamic and promising marketplace that exists. Perhaps an honest and searching look in the mirror once in awhile would be advisable for all Americans!

## 1200 FACE WAYNE

DETROIT - 1,200 county workers are going on an enforced two-month layoff in Wayne County so that there will be sufficient funds available to pay deputy sheriffs an arbitrator wage increase. County officials said the problem arose when an arbitrator awarded the 640 deputies a 17.7 percent increase over a 29-month contract period.

Officials figured it would cost the county \$2 million in back pay and \$4.3 million over the life of the contract. County commissioners said 922 permanent employees and 300 others in federally-supported county jobs would be affected by the layoffs which would be spread among the 6,000 county workers.

# Mack, Davis want The Buffalo Chipkickers U.P. exempt from Rare II

LANSING - Upper Peninsula Senators Bob Davis and Joe Mack have introduced a resolution in the Michigan Senate urging the U.S. Forest Service to remove all lands in the U.P. from consideration as wilderness areas.

The U.S. Forest Service, under its RARE II program, is proposing that approximately 100,000 acres of U.P. land be classified as wilderness. This land would be left in its natural state, completely unmanaged and untouched, inaccessible by motor vehicle and excluded from farming, forestry, industry or any type of economic expansion.

"Placing even more of the area's resources under the restrictions of the Forest Service would seriously disrupt the growth of industry; counteract the proper and productive management of the forests, our sole renewable resource; further erode local tax bases; and add to the heavy burden of unemployment," the resolution states. "To make such major sacrifices in order to benefit the minute portion of the population who would ever utilize a wilderness area is surely not in the best interest of local communities, the Upper Peninsula, or the State of Michigan."

Davis pointed out that federal, state and local governments combined already own over 40 percent of the land in the U.P. Of the acreage being considered as possible wilderness areas, a significant portion is currently privately owned. "That percentage of land which is government controlled is way above the national average. Instead of taking more land, they ought to start giving some of it back," Mack said.

After passage, copies of the resolution will be transmitted to the U.S. Forest Service and Michigan's Congressional delegation. The Forest Service has set a date of October 1 as the deadline for accepting comments on the proposed Wilderness areas.

## Voluntary Quits Bill still tied up despite fight

LANSING - An attempt by Republican lawmakers to yank out of committee a bill cutting off unemployment compensation for those who quit their jobs has been rejected by the Senate.

By a vote of 20-16 the Democratic-controlled chamber tabled a motion to "discharge" the bill from the Labor Committee and it is not expected to be brought up again. A discharge motion is an attempt to take a bill away from a committee which has stalled approving it and it is rarely attempted and even more rarely successful.

Under current law employers must pay unemployment compensation to workers who voluntarily quit their jobs after a brief waiting period.

## COUNTY LAYOFF

They indicated that in addition to the deputy sheriffs, workers not affected by layoffs will include those dealing with the elderly and with maintenance.

The Board of Auditors of the county had recommended a 15 percent cutback in all county departments as a solution but ran into objections from the county prosecutor's office and several courts which opposed any slash of their personnel. Commissioners said the layoffs are necessary because Michigan courts have ruled the county must begin immediately to pay its deputies in line with the recent arbitration award.

The county has appealed that finding.



BLUE-GRASS IS HERE — The Buffalo Chipkickers will perform in concert at the National Guard Armory across the road from Gogebic Community College on Thursday, Oct. 5, at 8 p.m. There's a two dollar admission charge for the general public, and GCC students get in on their student activities card. Each student is entitled to bring a non-student guest on a special discount one dollar ticket. Seating capacity is only 500, so activity director Gene Farrell suggests that Blue-grass fans get their tickets early — at Room 313 or Room 109 at the college.

Nonesuch News - 9/27/78 - Page Four

## Food prices Still on up cycle

WASHINGTON - A bad year for America's farm crops could nearly double the expected \$3.40 weekly hike in the coming year, says the Ag Department's top economist.

Inflation's inevitable (see, now they've even given up in government) effects will increase prices that much, says Howard W. Hjort, but reduced meat and dairy supplies could raise the hypothetical family's average grocery bill another \$2.75.

That projected increase, now up to \$6.15, would be ON TOP of the \$6.21 weekly hike predicted for the family this year. In 1977, it supposedly cost \$62.10 a week to feed such a mythical family.

Hjort said food prices this year are expected to be .0 percent above 1977 averages with most of '78 increase having come in the first five months of the year.

A year ago Hjort had predicted food prices would be up from 3 to 6 percent this year. "You can see that we didn't take into account the effects of farm policies and programs," he said.

Hjort said that halting the annual rise in retail food prices will require either an end to inflation or a willingness by farmers to accept a price cut of about 14 percent for their crops. General inflation, he said, "tends to be the dominant factor" in the rise of food prices, with two-thirds of each dollar spent at the supermarket going for services and not the food purchased.

... SUPERMARKETS now sell underwear, pens, magazines, records, toys and so forth.....because there aren't many folks who can afford groceries!

Nonesuch News - 9/27/78 - Page Five

## W.P.C.C. closes Waterfowl Unit to hunting

WHITE PINE - The White Pine Copper Division has announced the closure to hunting of those company lands dedicated to the continuing waterfowl management project conducted in cooperation with the Michigan Department of Natural Resources.

The closed area includes all White Pine and Copper Range lands bounded by Michigan State Highway M-64 on the north and west, by the L.P. Walsh Highway on the south, and by Townline Road on the east. The "no-hunting" period is effective from September 10, the opening of bear season and extends through the forthcoming deer season. The lands involved are posted.

The closure is necessary to protect the resident nesting population of various duck species and a "seed" flock of Giant Canada geese, which are successfully breeding in habitat managed by the company. Closure of the lands is also necessary to protect the White Pine employees working in the tailings basin area.

The closure continues to be an important part of the long-range environmental quality program at White Pine. The company tailings reclamation area has been a natural stopover for migratory birds, and a nesting area for a large variety of native birds. Use of the area by these birds is steadily increasing.

White Pine Copper Division and the Department of Natural Resources have asked waterfowl hunters to honor the lands closure and have noted that cooperation in previous years has contributed to the success of the waterfowl project.

# D.N.R. THREATENS COUNTY ABOUT DUMP SITUATION

LANSING - The DNR Resources Recovery Commission says it will proceed with legal action against Ontonagon County unless the county starts showing some inclination to upgrading landfill sites.

The Commission met in Higgins Lake last week and discussed the Ontonagon County case at length, according to executive director Fred Kellow.

Kellow stated, "The staff agreement was to suspend deadlines against the county, mainly because we would like them to become part of a possible regional solid waste plan."

A tentative meeting has been set for next month to see if the counties of Iron, Gogebic and Ontonagon can pool their resources for formation of a regional plan to dispose of garbage.

Kellow said the commission is disturbed because Ontonagon County has shown a "total lack of interest" in upgrading landfill sites.

"I would hope we can work something out at this meeting," he said. "But if the county doesn't show some incentive, we may have to

recommend action to the Attorney General."

Spokesmen for the county board maintain there is no money for establishing new sites. The general feeling is that the state should provide funding for any such projects.

The Resources Recovery Commission does have the power to forcibly close any landfill site in violation of state law but Kellow admitted that other sites which have been closed down have been private landfill operators and no precedent exists for the closing of a county landfill.

The executive director remarked that Ontonagon is not the only county having problems and mentioned Keweenaw County as another.

An April 15th deadline had been set for Ontonagon County to have two landfill sites built. Currently townships in the county have their own sites, and, at a meeting held in Houghton earlier this summer, spokesmen for some of the townships said there is little basis for the charges which the commission has leveled against township landfill operations.

## EPA BANS MMT IN GAS

WASHINGTON - The Environmental Protection Agency has banned an additive called "MMT" which is used in about half of all unleaded gasoline, a step the oil industry said will make unleaded gas more costly.

EPA's chief Costle issued the ban - the first under a new section of the Clean Air Act - because he said "MMT contributes to pollution by increasing hydrocarbon emissions in automobile exhaust."

The ban will take effect on Oct. 27, which Costle says will give sufficient time to sell supplies of gasoline already containing the additive. The additive is produced solely by the Ethyl Corp. and it increases the octane rating and makes the fuel less likely to cause engine knocking - the same thing that lead compounds do in leaded gas.

Costle argued Ethyl's claims that the ban will cause an unleaded gas shortage by 1980, saying "Officials of 17 of the largest refiners in the country stated on Aug. 17 at a public meeting... that there will be no gasoline shortage in 1980 even if they stop using MMT and conform

with the standard for lead."

However, the American Petroleum Institute criticized the action saying the ban was issued before completion of joint tests by the auto and oil industries to determine the effect of MMT on pollution. "The ban on MMT will make it more difficult and costly to produce gasoline of sufficient octane to meet the nation's gasoline demand which has been at or near record levels since May," an API statement said.

Neither API nor EPA gave any indication what the added cost of producing gasoline of adequate octane without the additive will be but it seemed a good guess that those costs would be passed on to consumers.

Meanwhile, on another front, sales of gasoline, a mixture of gasoline and alcohol, can continue at about 65 stations in Nebraska, Illinois and Iowa while the government checks further pollution and mileage studies, Costle has announced. He made the announcement as a federal law barring the use of MMT and other gasoline additives such as alcohol was made.

## BOYD INDICTED IN UGLRC CASE

ST. PAUL, Mn. - A federal grand jury has indicted Donald C. Boyd, Brimson, on 18 counts of conspiracy in connection with an investigation of misuse of federal funds given to the Upper Great Lakes Regional Commission. The indictment charges that Boyd received about \$65,000 in kickbacks from James Manos, a consultant for the Northern Minnesota Small Business Development Center.

The indictments were the first in an investigation which began a year ago. At the time the funds were channeled through the office of the governor to Boyd's operation, Wendell Anderson was in that office. An Assistant U.S. Attorney General stated the investigation is continuing, and further indictments are expected. The public has been denied access to records of the governor's office for the period being investigated and charges have been leveled at the investigators of attempting to cover up possible involvement of Anderson in the scandal until after the November election. Anderson is running for his first full term in the U.S. Senate after appointment to the post by current governor Rudy Perpich.

The Upper Great Lakes Regional Commission includes portions of Michigan and Wisconsin as well as Minnesota.

## States would control spraying under bill

WASHINGTON - States would gain new power to enforce federal pesticide regulations under a bill passed by the House, according to its proponents.

The bill, passed last week and sent to the president for approval, would revise the Environmental Protection Agency's authority to deal with pesticides, allowing states to join and thus streamline federal channels for winning approval for use of new chemical compounds.

Depending on your angle of vision, it could also be — rather than an addition of power — a diminishment, as it will increase by one those areas in which the state/federal cooperative gambit really means nothing more than that states do exactly what the federal authority dictates.....or else (or else what - oh, any number of things including withholding or loss of funds, court suits to force compliance, fines, citations, non-acceptance of related or even non-related plans by the state for affirmative action of some sort. The word blackmail has an ugly, private-sector sound to it, but I'll be darned if I can think of a better one.

This particular instance may not be the best example in the world but it is an example nevertheless. Pretty soon you'll be able to threaten your states' rights through the eye of the finest needle!



## D.N.R., COMMERCE DEPT. FIGHT OVER STREAMS

LANSING - Two state agencies may be doing battle with each other in the near future over how tightly to restrict canoeing on northern Michigan streams.

Both the DNR, which is trying to protect the streams from overuse, and the Dept. of Commerce, which is trying to protect the economic livelihood of livery operators, have okayed contrasting studies on the same issue.

The reports are a prelude to a return expected in January to the Lake County Circuit Court where Judge Charles A. Wickens will judge the controversy.

The DNR, crying poverty because of budget cutbacks, is relying on donations and a university researcher to document the need for canoeing rules to protect the environment.

The commerce department is paying \$14,800 for a study designed to show the "potential and expectation of growth of canoeing on key rivers and resultant economic impact."

Commerce Dept. director Keith Molin said he authorized the study by a Grand Rapids firm following meetings with lobbyists for the Michigan Recreational Canoeing Association. "We're not going to war with the DNR on this," said Molin. "We don't plan on using the data to defend, mediate or arbitrate in the litigation or to fight any canoe rules the DNR may propose."

Molin said the study is designed to gather objective data so the department does not have to rely strictly on DNR information on the issue.

"I'm sure the environmental destruction (on streams) is probably more than the (canoeing) industry is willing to tell me. At the same time I'm betting it's not as bad as the purists claim," he said.

The issue arises from a 1972 state Supreme Court ruling that the DNR's river-use rules can be implemented if the agency can prove that the rules are intended to prevent "pollution, molestation or destruction" of streams. To build its case the DNR is working with Dr. R. McNeill, a professor of biology at Ferris State College, who is using a faculty research grant to develop a system for counting canoes on streams.

His work has been helped by a \$1,500 donation from the Pere Marquette Watershed Council and Trout Unlimited. TU is hoping to raise \$5,000 for the work which it believes will show how unrestricted canoeing on quality trout streams interferes with fishing.

McNeil claims that the study being done for the Commerce Dept. is being conducted at the wrong time of the year if the researchers are attempting to determine the level of activity on streams as claimed.

McNeil has turned over results of his 1977 aerial surveys on canoe activity to the consultants who wanted to use the data in their study.

A spokesman for the West Michigan Tourist Association and member of the Michigan Travel Commission, speaking for the tourism lobby, said, "What we don't want is a bureaucracy as stringent as the DNR having life and death power over the canoeing industry."

The DNR's canoe rules were originally aimed only at the Pere Marquette, Pine, Au Sable, and Manistee rivers. It is expected the rules could be broadened to include the Boardman, Jordan, Sturgeon Rifle and Pigeon rivers. Projections for further expansions beyond those listed were not available.

## Abortion Fight heated

LANSING - Emotion continues high in the legislature's battle over state funding of abortions for low-income women. The fight has shifted again to the Senate after the House for the second time this year voted to cut off state money for the operations. Charges that lawmakers were playing election-year politics did not halt the House opponents from approving a bill last week stopping use of state Medicaid money for abortions.

The measure would limit to \$1 the state's total budget for abortions not necessary to save a woman's life and it would restore \$520 million in Medicaid funding for the state's other Medicaid services. That money could be spent for hospital, pharmaceutical and physician services for Medicaid recipients in the new fiscal year beginning Oct. 1.

The governor, who has consistently supported the use of state money to pay for abortions for poor women, issued a statement critical of the House action. He had warned that he would again veto any legislation containing language restrictive to the abortion funding and said the House had chosen to play politics with two important human rights issues: a woman's right of choice no matter what her financial status and the funding for Medicaid programs for the coming fiscal year.

Rep. Jacobetti of Negaunee argued against the funding, saying "We have moved to the elective abortion as a method we are encouraging for birth control." However, other lawmakers argued that the state cutoff would only hurt poor women while the rich could continue to pay for the operations.

"It is a case of equal protection. We would be very selfish if we are to use the power we have to take equal rights away from persons with lower incomes," said Rep. Perry Bullard, D-Ann Arbor. The House had previously rejected a bill approved by the Appropriations Committee which eliminated the anti-abortion provision and instead it approved another version of the bill which was specific in inclusion of a section cutting off the Medicaid monies for abortions.

## Ag. Science class Offered

ONTONAGON - Michigan State University Cooperative Extension Service and the Ontonagon Area Community Schools are sponsoring an Agricultural Science Class at the Ontonagon Area High School, Room 109, on Wednesday, September 20th at 7:00 p.m. This class will meet every other Wednesday for twenty weeks. The first class session involved planning a course outline. Some of the topics to be presented include small garden farming, raising of beef cattle, dairy farming, sheep farming, poultry farming and many others. High school credit can be earned for science.

An Art class will be offered in Mass City for anyone interested. Mrs. Ruth Morris will teach the class which will be held on Thursday evenings at 7:00 in the Multi-purpose room of the school.

There is still time for adults to sign up for high school classes being held in the evenings. The class schedule for the week is:

Monday - English 9-10, Rm 121; English 11, Rm 122; Graphic Arts, Vocational Bldg.; Tuesday - World History, Rm 124; Wednesday - Economics, Rm 126; Radio I, Library; Thursday - Typing, Rm 141, Automotives, Vocational Bldg.

Senior citizens may sign up for classes at Cane Court and Mass City Elementary School. Classes are held at Mass City on Thursday afternoons from 1:00-4:00. Classes are held at Cane Court on Monday evenings from 9-12:00 and on Tuesday afternoons from 1:00-4:00.

## EXT. SERVICE OFFERS SEMINARS

HURLEY, Wi. - Frank Drazkowski, Administrator, Grandview Hospital, will be the speaker for a seminar session, "Cost of Staying Well," at the Bi-State Consumer Day on Wednesday, October 4th to be held at the Holiday Inn, Hurley, and sponsored by the family living education program of the Cooperative Extension Services of Gogebic and Ontonagon counties in Michigan and Iron County, Wisconsin, as well as the extension study groups and homemaker clubs.

Medical costs have increased 24% in the 24-month period between March 1976 and March 1978, the latest figures available from the U.S. Dept. of Labor, Bureau of Statistics, according to Aune Nelson, extension home economist for Gogebic and Ontonagon counties....a decided increase though less than the 40% rise for the cost of home ownership or 43% for gas and oil or the 50% increase in fuel, oil, coal or bottled gas during the same period.

During the seminar Mr. Drazkowski will explain the overview of the rise, the guidance factors controlling fees and costs as well as the role individual hospitals play in cost control. A question and answer period will be a part of the session.

"Keeping Ahead of Inflation," the theme for the Bi-State Consumer Day, includes two general sessions: in the morning, "The Economics of Insurance," with Karen Goebel, Univ. of Wis. Extension; and, "Consumer Complaints," with Irene Hathaway, Mich. State Univ., in the afternoon.

Along with the "Costs of Staying Well," three other seminar sessions, "The Price of Power/Energy" with Lee Carlson, Lake Superior District Power Co.; "Elegant and Energy-Saving Window Dressing," with Ardala Littlefield, University of Wisconsin Extension; and "Economic Meals Under Pressure," with Alice Kempen, UWEX, will be offered twice. Two of the seminars will be offered in an evening session from 7:30-8:30 as an extended opportunity to at-

tend a Consumer Day seminar session.

In the "Price of Power" seminar, Mr. Carlson will cover the factors involved in determining power rates, explain fuel adjustment charges and suggest ways for keeping utility costs down.

Since window areas of a home are usually between 10 to 20 percent of the total floor plan and can transmit a substantial amount of heat, in her presentation Ardala Littlefield will offer ideas on the flexibility in indoor temperature control with an eye on home beauty, via window treatment.

The number of small food preparation appliances found on the market has reached such proportions that it is difficult for consumers to choose the most efficient appliances for their individual needs. Small appliances, properly selected and used are efficient and thrifty choices. Alice Kempen tells the story of kitchen small appliances in the seminar titled "Economic Meals Under Pressure."

During the day, child care provided by Gogebic Community College students in child development will be available for pre-elementary school age youngsters from 18 months and older at the rate of \$1.00 per family for the first youngster and 25 cents for each additional youngster. Bag lunches for the youngsters must be provided by the parents.

Consumer Day begins with registration and coffee at 8:30 and the first general session at 9:00 a.m. and concludes at 2:45 p.m. CT to resume for a seminar presentation in the evening from 7:30-8:30 p.m. CT.

All interested individuals are welcome to attend says Mrs. Nelson and costs for the day are \$3.70 with lunch included; 50 cents for one session and/or for the day without lunch. Pre-paid registrations for participants and child care are necessary and are accepted through Friday, Sept. 29 at any one of the three area extension offices: Ontonagon, Ironwood or Hurley.



## WUPPDR amends funding

WHITE PINE - Action as reported at last week's full commission meeting of the Western Upper Peninsula Planning and Development Commission may have resolved the problem of equalization of expenses and representation for the member units. The body amended its by-laws to provide greater latitude for apportioning the annual levy to local governments and representation on the commission. Since the formation of the organization each of the six member counties had paid an equal share of the annual levy and had equal representation on the commission.

As of the recent session the counties will participate on the basis of a fixed sum to each plus an apportioned share based 50 percent on state equalized valuation and 50 percent on population.

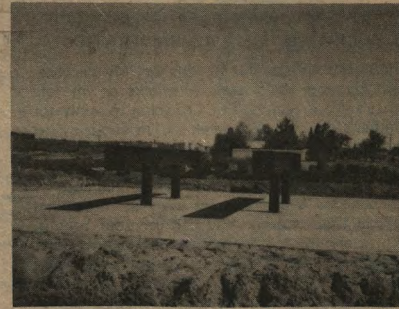
Prior to the by-laws change each county had seven commissioners to represent it on the commission whereas under the new formula the

county representation will be as follows:

Houghton 8; Baraga 6; Gogebic 6; Iron 7; Keweenaw 4; and Ontonagon 6. In addition, the three participating cities of Ironwood, Houghton and Hancock will each have two commissioners, in effect giving the counties of Houghton and Gogebic 10 and 8 representatives respectively.

In other action taken at the session a position statement on the state wetland's bill was again tabled until another meeting. The commission position statement suggests an equitable arrangement where wetland areas could be sold on a willing seller basis or a land exchange with the state. The commission changed the date of its Oct. 16 meeting to Oct. 30; accepted staff salary increases for the present staff; adopted a recommended job and salary classification system to conform to Housing & Urban Development guidelines; and accepted the resignation of staffer Robert Blau who has accepted a similar position in New York.

## Load O' Logs



WORK TOWARD COMPLETION OF THE RECREATED "WORLD'S FAIR LOAD OF LOGS" AT EWEN CONTINUES AS SEEN IN THIS PHOTO. AS THE LOG-JAM-BOREE DATE APPROACHES - OCTOBER 6, 7 & 8 - THE CONCRETE PAD AND BASE FOR THE SLED WHICH WILL HOLD THE LOAD OF LOGS STAND FINISHED. SOME OF THE GIGANTIC WHITE PINE LOGS CAN BE SEEN IN THE BACKGROUND.

(Nonesuch News Photo)

## Cement short; users angry!

CHICAGO - Industry officials say a cement shortage is spreading through the Midwest and threatening to delay construction during the coming months. More localized reports of curtailments of supplies and cancellation of allocations of cement are already beginning to slow progress to a crawl in many areas.

Jack McNeil, a Chicago area builder representing the Home Builders Association of Illinois, said that municipalities should help by easing requirements for some uses of concrete until next year. He requested that each municipal authority in that state temporarily waive requirements for concrete curbs and gutters, sidewalks, service walks, steps and retaining walls. These could then be put in place next spring as soon as weather and supply conditions allowed.

He said steps must be taken "immediately" so enough foundations can be poured by mid-November to allow construction through the winter months. Failure to get the foundations in place before winter will mean a complete halt in construction activity until April of

next year, said McNeil. He termed the economic implications of a shutdown as disastrous.

Another spokesman, C. Cass Collins, senior vice president of Home Builders of Greater Chicago, said the cement shortage has brought a 10 percent cost increase in the past two months and added that builders needs in the area are 20 to 30 percent unfilled with some sections of Chicago as high as 40 to 50 percent.

The director of market research for the Portland Cement Association in Skokie, said the shortage was caused "by the sudden explosion of demand." There is a cynical disagreement by other industry analysts with this explanation, however. Some claim that the industry is historically backwards and always reacts "too early or too late" as high demand brings on a flurry of new or added capacity construction which reaches the marketplace, due to long leadtime for engineering and construction, at about the time the market declines - providing a glut of product followed shortly by a depression in the industry's price structure.

## Sheriffs Report

Ontonagon - Sheriff Gerald Kitzman of the Ontonagon County Sheriff Department has issued the department's report for the month of August as follows:

The total man hours for the month of August were 1623. Patrol hours, 333, complaint hours, 149½, desk hours, 867, Court hours, 52½, school hours, 72, marine hours, 28, other, 121.

Total mileage on the patrol cars was 13,062 miles. Patrol hours according to townships was as follows:

Bergland 26, Bohemia 15, Carp Lake 34½, Greenland 67, Haight 17, Interior 10, Matchwood 11½, McMillan 38, Ontonagon 58, Rockland 18½, Stannard 37½ - total 333.

Complaint hours according to townships: Bergland 5, Bohemia 11, Carp Lake 16, Greenland 15, Haight 5½, Interior 2, Matchwood 1, McMillan 16½, Ontonagon 58, Rockland 5, Stannard 14½ - total 149½.

Accidents for the month were as follows: P.D. 13, P.I. 4, with a total of 4 persons injured. Assisted Michigan State Police on one accident in Ontonagon County with 3 fatalities.

Complaints handled by the department were: B & E's 7, larcenies 10, assaults 1, M.D.O.P. 16,

traffic complaints 5, school bus complaints 1, V.C.S.A. 2, family complaints 2, trespassing 1, harassment 1, miscellaneous 6.

Two car fires were investigated, one with no injuries and one with 1 fatal fire.

Papers served 14, guns registered 12, ambulance calls 13, vehicle inspections 1, fingerprints (other than arrests 1, dog bites 6, civil defense tests 1, vehicle assistances 12, jury notifications 3, assists 6, blood relays 1.

The department had a total of 9 arrests, appearance tickets 24, traffic tickets 20, verbal warnings 78, bar inspections 35, and property inspections 370.

The following prisoners were booked and released: Ontonagon County booked and lodged 13 and released 13, Baraga County booked and lodged 11 and released 10, and Keweenaw Bay Tribal booked and lodged 1 and released 1. The total booked 25 and released 24.

One security officer of the Department attended a two-week jailers school held at Northern Michigan University.

One trip was made to the Michigan State Police Post, Negaunee for a polygraph test.

## DEATHS

MRS. PAUL SIREN

Mikkeli, Finland - Mrs. Paul Siren, former Mass City resident, died recently at Mikkeli.

Mrs. Siren was born in Finland. She married Paul Siren at Detroit and after moving to a farm in the Mass City area with her husband she operated a beauty shop there for many years.

The couple moved to Finland over ten years ago and have resided there since.

Survivors include her husband.

## Republicans push for automatic tax cuts

WASHINGTON - Republicans in the Senate Finance Committee are pushing for a system of automatic tax cuts to keep inflation from pushing wageearners into ever-higher income tax brackets.

The tax indexing plan would require yearly increases in personal exemption and standard deduction as well as cuts in individual tax rates geared to the rate of inflation.

The new effort is a rebound attempt to overcome defeat in their drive to see the Roth-Kemp bill passed. The new measure is sponsored chiefly by Sen. Robert Dole of Kansas. Opponents claim the Dole amendment, which would be for a two-year trial period, would worsen inflation by raising the federal deficit, forcing the government to borrow more money and giving taxpayers little incentive for their own inflation fight.

Dole claims that the average family of four earning \$15,000 in 1977 had an effective tax rate on that income of about 9 percent, or \$1,400. Assuming the inflation rate is at 7 percent and the family keeps up by a cost-of-living increase, the family next year will earn just over \$16,000. The family has not increased its spending power of the previous year, says Dole. However it is now confronted with an 11 percent effective tax rate and a new tax bill that is nearly \$1,600. Dole says that \$200 difference to his hypothetical family is "an unlegislated tax hike that cheats the American worker." Under his proposal it would be offset by a 7 percent increase in deductions allowed the family and by expanding the tax rate tables to allow a 7 percent increase in wages without going into a higher tax bracket.



... QUESTIONS & ANSWERS ...

By: Jay L. Eshenroder, Branch Manager  
SOCIAL SECURITY ADMINISTRATION

(Q.) My wife died 6 months ago. My daughter already gets social security checks on my late wife's work record, and I'm going to apply for father's benefits next week. If I'm eligible, how will my earnings affect our payments?

(A.) If you earn more than \$3,250 in a year, \$1 in benefits is withheld for every \$2 in earnings above that amount. You can get your benefit, however, for any month in which you neither earn more than \$270 in wages nor perform substantial services in self-employment. Your earnings will affect only your benefit. They will not affect your daughter's payments.

## Bowling

### KONTEKA SUNDAY NITE COUPLES LEAGUE

Go-4ers	8	0
Paper Quarters	5	3
Woodburners	5	3
Cellar Dwellers	5	3
Apothecary	4	4
Louie's Texaco	2	6
Mattila's Appliances	2	6
Lumber Jacks & Jills	1	7

HTS & G, APOTHECARY, 1901 & 666; MHS & G, Tony Sustarich, 544 & 210; WHS & G, Paula Saubert, 500 & 181.

NOTICE!!! To All Area Team/League Bowlers. We will be happy to print your team/league results as we have in the past. We must receive the week's report by Saturday for inclusion in the following week's paper.

### Wanted To Buy

VACANT -- LAKE FRONTAGE  
FARMS -- TIMBERLAND

Ph. 228-8182

**DIAMOND LAND CO.**

1104 TONTI RD --- MARQUETTE, MI. 49855

## SSS Scholarship

HANCOCK - The Suomi Sauna Society (SSS) has awarded a scholarship grant-in-aid to Sirke Nieminen, a student from Finland studying at Suomi College. One would expect a sauna club would be interested only in cleanliness and bathing thrills, but the SSS with a membership of thousands of fans extending from Michigan to Kansas, has also advanced cultural projects, arranged charter flights and held annual banquets, none of these in the sauna. The Society's aim is to advance the appreciation of the Finnish sauna's clean and unadulterated use among members and novices.

The late Dr. Walfred E. Nelson, author, formerly pastor at Escanaba and Suomi College trustee, was the first president of the SSS as it gathered members in Michigan a decade ago. His wife, Mrs. Lawly Nelson, Chanute, Kansas, is current scholarship chairperson. Mrs. Jacqueline Konstenius of Baraga, Elmer Bessonon and Sirkka Saarelainen both of Escanaga, are currently the club's official leaders.

The SSS holds its meeting annually at Northern Michigan University or Suomi College. This year is NMU's turn to host.

One of the major, annual projects, in addition of course to the advancement of sauna culture, is to award a scholarship to a student from Finland studying in the U.S.A.

## COPE to meet

EWEN - Dale Wilber, President of the Gogebic Ontonagon Labor Council AFL-CIO, announces the council will hold its Biennial Area COPE Conference on September 30, 1978, at the United Steelworkers Hall, White Pine, beginning at 7:00 p.m. (EDT).

Highlighting the meet will be William C. Marshall, President of the Michigan State AFL-CIO; Keith McLeod, Democratic candidate for Representative in Congress, 11th District; and Libby Maynard, Democratic candidate for Lt. Governor and Vice Chairperson of the State Democratic Committee.

A pasty lunch and refreshments will be served.

## Set Hearing on Health plan

ONTONAGON - A public meeting on the health systems plan of the Upper Peninsula Health Systems Agency, Inc. will be held in the Ontonagon Community Building on the 30th of October for interested citizens of Gogebic, Ontonagon, Baraga, Iron, Keweenaw and Houghton counties.

The agency's executive director, Stuart E. Mount, is urging all citizens to attend the meeting and make known their views on the document both orally and in writing. Persons unable to attend can submit written comments to the agency's central office at 1500 W. Washington St., Marquette, Mi. 49855 until Nov. 1. In this area the documents will be on display at the Ontonagon Memorial Hospital in Ontonagon for public inspection.

## Bond Issues not likely to gain nod

WASHINGTON - Taxpayers won't stand for tax raises to support new bond issues, leaving many American cities with trouble borrowing money for desired capital improvements, a congressional study shows.

The House Banking subcommittee on economic stabilization got questionnaire answers from 47 of 65 city governments surveyed. All 47 cities said they could sell their bonds and only one said its credit rating was so bad the interest would be too high.

But.....25 said new borrowing would require unacceptably high local tax increases to support the debt. Sixteen said such borrowing would require voter approval and called that approval unlikely.

Twelve cities said their debt load could not be increased without cutting into important services. Six talked about restrictions in state or local law. And 11 gave general answers along the same lines.

The committee's chairman said the results raise questions about possible usefulness of a new federal lending agency to help municipalities raise capital. His committee has been considering various bills on that subject.

...Please, don't knock the weather! Nine-tenths of the people in this country couldn't start a conversation if it didn't change once in a while!

## AG files suit to halt UPPCO rate hike

LANSING - The state Attorney General's office has filed suit to rescind a \$1.2 million interim electric rate increase for the Upper Peninsula Power Company.

The increase was granted by the Public Service Commission on August 21st despite the opposition of thirty municipalities and the attorney general's office.

The utility serves 11 of the 15 counties in the Upper Peninsula.

In the suit filed last week in Ingham County Circuit Court, Attorney General Frank Kelley asked that money collected so far by the utility be refunded.

The suit contends the PSC refused to hear evidence that the firm's utility rates are the highest of all private electric companies in the state and 26 percent higher than the average for private utilities in the state.

The PSC refused to hear testimony from the attorney general on the grounds that only utility companies and the commission's technical staff have a legal right to offer evidence on whether an interim increase should be granted.

The suit by the attorney general's office contends this is a denial of equal protection.

## NITRITE BAN may be the pits

WASHINGTON - Meat processors have told Congress that taking nitrite preservatives out of cured meats could create botulism 'time bombs' but a spokesman for a nutrition group says that danger is exaggerated. The testimony came before a Senate agriculture subcommittee that is looking into the possibility of phasing out sodium nitrite - a suspected cancer-causing agent - in hot dogs and other processed meats.

"We are afraid of botulism and the food poisoning problem in the absence of nitrites," said the assistant director of the American Association of Meat Processors. But the director of the consumer division of the non-profit Community Nutrition Institute disagreed and said advances in handling and processing made all processed meats safe without the nitrite. So, it's up to the experts in Congress to decide one more time. Who ever said it was all fun and games in Washington?

### AREA SCHOOL LUNCH MENUS.....

(Sept. 25 - 29)

#### WHITE PINE

Monday - Cream of tomato or chicken noodle soup, peanut butter or ham salad sandwich, cheese/carrot stix, fruit, milk.

Tuesday - Barbeque/bun, potato chips, corn, fruit cup, milk.

Wednesday - Toastie Dog, whole kernel corn, fruit cup, carrot stix, milk.

Thursday - Lasagna, vegetable salad, fruit, bread/butter/milk.

Friday - Fish stix/tartar sauce, macaroni & cheese, peas, peaches, bread/butter/milk.

#### TROUT CREEK

Monday - Pennies from heaven, potatoes, peas, frosty creme.

Tuesday - Turkey, cranberry sauce, sweet potatoes, green beans, applesauce.

Wednesday - Pasties, cole slaw, gelatin dessert.

Thursday - Egg salad sandwiches, chicken rice soup, peas, peaches.

Friday - Fish patties, potatoes, corn, dessert.





# **NONESUCH COUNTRY PEDDLER**

NONESUCH NEWS—  
SECOND SECTION

DISTRIBUTED  
FREE OF CHARGE  
TO OVER 4000  
HOMES & BUSINESSES  
EACH WEEK  
PUBLISHED  
EVERY WEDNESDAY  
READ THROUGHOUT  
ONTONAGON COUNTY

WHITE PINE, MI. 49971

VOL. 1 - NUMBER 12

SEPTEMBER 27, 1978

THIRD CLASS  
POSTAGE PAID  
WHITE PINE, MI.  
49971

## **OUR NEW STORE HOURS**

**MONDAY thru FRIDAY  
10am to 6pm**

**SATURDAYS  
from 10am to 5pm**

**CLOSED SUNDAYS**

**EMERGENCY NUMBER~884-2296**

# **VILLAGE PHARMACY**

**419 RIVER STREET ONTONAGON, MI.  
phone 884-4673, 884-2002**

2022.15.80





COMMUNITY-WIDE  
DECORATIONS  
IN A  
LOGGING  
&  
LUMBERING  
THEME

# 3 BIG DAYS OCT 6~7~8

Friday OCTOBER 6:

**Flea Market** SIDEWALK SALES -- ARTS & CRAFTS --  
Displays & Sales -- Beginning at 9 a.m., Main St.

**Silver \$ Casino** Located In The FIRE HALL - 7-11 p.m.  
Offering a wide variety of GAMES OF CHANCE!

**Great Northern Opry** 7:30 p.m.  
E-TC High School

Under Direction of Chet & Ginny Benson - Featuring: KENNY ROBERTS, World Famous Yodeler  
PLUS Many Others Well-Known Throughout The U.P. & Northern Wisconsin In Country Music!

Followed By A **Dance** At The Historic O'Rourke Hall - 9 p.m. - 1 a.m.

Saturday OCTOBER 7

**Parade** 10:30 A.M. -- Theme: Logging & Horse & Buggy Days  
Category For The Youngsters - Motorized Entries Accepted

**Bake Sale** ..AND 'COFFEE BREAK' - Ewen Community Center  
(All Donations Appreciated!!)

**Lumberjack Meal** "EWEN LUMBER CAMP"  
Served Camp Style At The LEGION  
Adults - \$2.50 - Under 12 - Just \$1.25!

**Log Rolling** SHOWS AT 12:30 & 4:30 - FEATURING-----  
"THE FISCHER BROTHERS"  
Trick & Fancy Log Rolling Show - Including \*\*  
\*\*Amateur Competition For Prizes!

**Bingo & Casino** STARTING AT 12 NOON ---  
(At The Fire Hall)

**Ol' Timers Hour** 2:00 P.M. -- South Branch Saloon  
Lumberjack 'Bull Session' In The  
Back Room!

You Must Be AT LEAST 50 For Special Rates On 'Moon & Brew' & Tall Timber Tales!

**Games** 2:00 - 4:30 ... GAMES, CONTESTS & OTHER EVENTS: Logging  
Related Skills & Feats Of Strength For YOUNG & OLD!!

**Canoe Race** 2:00 P.M. - On The South Branch Of The  
Ontonagon River... \$5.00 Per Canoe Entry.  
TROPHIES & PRIZES

**Fiddlin' & Foot Stompin'**  
9:00 TO 1:00 AT THE O'ROURKE HALL--- For A "Down-Home" Good Time!

Sunday OCTOBER 8:

**Pancake Breakfast** Beginning At 7:00 A.M.  
Sponsored By Ottawa Lions

**Fischer Bros.** The Final FISCHER BROTHERS SHOW

beginning at 1:00 p.m. and also including the conclusion of amateur LOG ROLLING competition  
and awarding of prizes!

**Local Worship Hour**

FEATURING A GENUINE "SKY PILOT" & The 'Roving Lumbercamp Preacher'

**Dedication** OF THE RECREATED  
"1893 CHICAGO WORLD'S FAIR including  
LOAD OF LOGS" guest appearances

## ACT NO. 198

OF THE

PUBLIC ACTS OF 1971

(Mandatory Special Education Act)

requires that local and/or Intermediate School Districts shall provide, or contract for the delivery of, special education programs and services to all handicapped persons from birth through age 25 or until they have graduated from high school or an equivalent program. Handicapped persons include:

- Mentally Impaired
- Emotionally Impaired
- Hearing Impaired
- Visually Impaired
- Physically or Otherwise Health Impaired
- Homebound/Hospitalized
- Learning Disabled
- Severely Multiple Impaired

Referral of handicapped persons may be made by a parent or guardian or, with the consent of the parent or guardian, by appropriate professional personnel to the local school principal or to the Director of Special Education, Gogebic-Ontonagon Intermediate School District, Bergland, Michigan, 49910. Telephone: 575-3438.

FOR SALE - 2 Bedroom Mobile Home With Entry Shed And Skirting. Good Condition. Clean. Very Reasonable. Located In Piper's Trailer Court, White Pine. Contact: Gordon Ongie, Phone 885-5861.

If You Love Interesting Shopping & Browsing -- And Want To Find What You Need, Drive Down To Ewen's New VARIETY STORE. Crammed To The Ceiling With Nice Clean Merchandise. Exciting & Unbelievable! Opened By The Same Family That Established The Old Ewen Variety Store - Across The Tracks. Open Mon Thru Sat 9 To 5, Fri Nite Till 8. Open Also On Sunday of Log-Jam-Boree, Oct 8 -- 10 to 4. (Jam-Boree Is 6th, 7th, 8th.)

COMPOUND BOWS Starting at..... \$49.95. Complete line of accessories and custom arrows. Authorized Wing Dealer & Service Center. Let Us Be Your "Archery Center"...BJ's Pro Archery Shop. Ph. 884-2849. Ontonagon, Mi.

BINGO.....NEW BINGO.....Every Thursday (Except Holidays) At The WHITE PINE AMERICAN LEGION. Games Start At 7:00 P.M.

FOR SALE - 10x50, 2-Bedroom Mobile Home, Set up in White Pine Trailer Court. Partially furnished. Entry Shed! Contact Gordon Ongie, Ph. 885-5861.

FOR SALE - '73 Grand Torino, Pwr. Steering & Brakes, Air Cond., Steel belted radials, tape deck, 4-speaker stereo, tinted windows, trailer hitch. Phone 883-3472 after 4:30 p.m.



# NOW PLAY EXCITING MONEY BINGO

# AT RED OWL!

# WIN UP TO \$1,000

AT OUR ONTONAGON IN-STORE BAKERY (Baked Fresh Daily)

**BREADS**  
**HAMBURGER & HOTDOG BUNS**  
**KAISER & HARD ROLLS**  
**SWEET ROLLS**  
**COFFEE CAKES**  
**DONUTS**

**\*\*BIRTHDAY\*\***  
 &  
**\*\*SPECIAL OCCASION\*\***  
 ...CAKES...  
 &  
**WEDDING CAKES**  
 "MADE ON REQUEST"

SAVE \$5.24 WITH THESE MONEY SAVING COUPONS

STAINLESS STEEL BY EKCO ETERNA®

## FLATWARE

"Montalo" — Deep etched Moorish design adds elegance to this timeless masterpiece. Graceful enough for any dining occasion.

"Concord Bridge" — Both traditional and contemporary in design, with a very smooth satin finish. Perfect for everyday or formal dining.

FEATURED THIS WEEK  
**Salad Fork**

Only **29¢**  
 WITH EACH & EVERY \$3 PURCHASE



COMPLETER PIECES ALSO AVAILABLE.

RED OWL COUPON

210 SAVE 20 c.  
**BIG "G"**

**CHEERIOS CEREAL**

15 OZ. BOX **89¢**

LIMIT ONE WITH COUPON. LIMIT ONE COUPON PER FAMILY. VALID THRU SAT. SEPT. 30, 1978. (CXX3010) CORP. RED OWL. 09449800

RED OWL COUPON

209 SAVE 70 c.

**MRS. BUTTERWORTH'S SYRUP**

36 OZ. BTL. **1.39**

LIMIT ONE WITH COUPON. LIMIT ONE COUPON PER FAMILY. VALID THRU SAT. SEPT. 30, 1978. (CXX3025) CORP. RED OWL.

RED OWL COUPON

207 SAVE 58 c.  
**YOUR CHOICE, BETTY CROCKER HAMBURGER HELPERS**

6 1/2 TO 8 OZ. PKGS. **\$1**

LIMIT 2 WITH COUPON. LIMIT ONE COUPON PER FAMILY. VALID THRU SAT. SEPT. 30, 1978. (CXX3035) CORP. RED OWL. 09449800

RED OWL COUPON

208 SAVE 24 c.

**RED OWL CRISPY RICE CEREAL**

13 OZ. BOX **69¢**

LIMIT ONE WITH COUPON. LIMIT ONE COUPON PER FAMILY. VALID THRU SAT. SEPT. 30, 1978. (AXX3078) CORP. RED OWL.

RED OWL COUPON

211 SAVE 20 c.  
**BIG "G"**

**TOTAL CEREAL**

12 OZ. BOX **89¢**

LIMIT ONE WITH COUPON. LIMIT ONE COUPON PER FAMILY. VALID THRU SAT. SEPT. 30, 1978. (CXX3010) CORP. RED OWL.

RED OWL COUPON

204 SAVE 30 c.  
**BIG "G" GOLDEN GRAHMS CEREAL**

15 OZ. BOX **89¢**

LIMIT ONE WITH COUPON. LIMIT ONE COUPON PER FAMILY. VALID THRU SAT. SEPT. 30, 1978. (CXX3010) CORP. RED OWL. 09449800

RED OWL COUPON

205 SAVE 90 c.

**GAINESBURGERS DOG FOOD**

72 OZ. PKG. **1.99**

LIMIT ONE WITH COUPON. LIMIT ONE COUPON PER FAMILY. VALID THRU SAT. SEPT. 30, 1978. (CXX3050) CORP. RED OWL.

RED OWL COUPON

206 SAVE 31 c.

**TONE BATH BARS**

2 4/4 OZ. BARS **79¢**

LIMIT 2 WITH COUPON. LIMIT ONE COUPON PER FAMILY. VALID THRU SAT. SEPT. 30, 1978. (CXX3016) CORP. RED OWL.

RED OWL COUPON

212 SAVE \$1.01

**CHOICE OF GRINDS HILLS BROS. COFFEE**

3 LB. CAN **6.59**

LIMIT ONE WITH COUPON. LIMIT ONE COUPON PER FAMILY. VALID THRU SAT. SEPT. 30, 1978. (CXX30100) CORP. RED OWL.

RED OWL COUPON

213 SAVE 10 c.  
**MINUTE LONG GRAIN & WILD RICE**

6 1/2 OZ. PKG. **79¢**

LIMIT ONE WITH COUPON. LIMIT ONE COUPON PER FAMILY. VALID THRU SAT. SEPT. 30, 1978. (CXX3010) CORP. RED OWL.

RED OWL COUPON

214 SAVE 70 c.  
**DOWNY FABRIC SOFTENER**

64 OZ. BTL. **1.59**

LIMIT ONE WITH COUPON. LIMIT ONE COUPON PER FAMILY. VALID THRU SAT. SEPT. 30, 1978. (AXX3078) CORP. RED OWL.

YOU CAN WIN ON YOUR FIRST VISIT!! TO START... Just Pick Up A Game Folder At Any Of Our Participating RED OWL STORES. . These FREE game folders are all identical and each contain all 8 game offering prizes of from \$1 to \$1,000 in cash! FREE...NO PURCHASE REQUIRED. ADULTS ONLY.

C.W. JEFFERY®. ALL RIGHTS RESERVED.

ODDS CHART as of Sept. 25, 1978 Program #494

GAME VALUE	NO. OF PRIZES	ODDS FOR ONE GAME PIECE	ODDS FOR 13 GAME PIECES	ODDS FOR 26 GAME PIECES
\$1,000	48	1 in 137,346	1 in 10,560	1 in 5,275
\$100	198	1 in 33,247	1 in 2,559	1 in 1,279
\$50	591	1 in 11,139	1 in 857	1 in 429
\$20	1,266	1 in 5,224	1 in 401	1 in 200
\$10	2,526	1 in 2,612	1 in 209	1 in 100
\$5	5,049	1 in 1,306	1 in 100	1 in 50
\$2	9,999	1 in 658	1 in 50	1 in 25
\$1	6,524	1 in 993	1 in 76	1 in 38
TOTAL	26,332	1 in 250	1 in 19	1 in 10

This program is available at 83 Red Owl Stores located in Upper Michigan and parts of Iowa, Minnesota, North Dakota, South Dakota and Wisconsin. Scheduled termination date of this program is November 23, 1978 but game officially terminates with distribution of all game pieces. This program may be suspended by product demand. Game pieces and game folders may be obtained free by visiting the nearest Red Owl Store, Inc. P.O. Box 220, Minneapolis, MN 55440. Only one game piece and game folder may be requested per envelope and a self-addressed, stamped envelope must accompany each request.





# RED OWL

\*\*OFFERING -  
PACKAGE LIQUOR, ICE, COLD BEER,  
AND MICHIGAN LOTTERY TICKETS.

ONTONAGON HOURS  
Mon thru Fri  
9 a.m. to 9 p.m.  
Saturday - 9 to 6  
Sunday - 10 to 5  
WHITE PINE HOURS  
Mon thru Fri  
9 a.m. to 9 p.m.  
Saturday - 9 to 6  
Sunday - 10 to 5

**Special!**

**YOUR CHOICE  
HARVEST QUEEN**  
PEAR HALVES, FRUIT  
COCKTAIL or YELLOW CLING  
PEACHES HALVES or SLICED  
16 OZ. CANS

**289¢**  
FOR

PURE VEGETABLE MIXO OIL... 38 OZ. BTL. 1.59  
KRAFT MAYONNAISE... 8T. JAR. 1.39  
FLAVOR HOUSE DRY ROASTED PEANUTS... 16 OZ. JAR. 99¢  
HEFTY LAWN N' LEAF BAGS... PKG. OF 10. 1.39  
NABISCO NILLA VANILLA WAFERS... 12 OZ. PKG. 59¢

**Special!**

**WHITE OR COLORS  
COTTONELLE  
BATH TISSUE**

**479¢**  
ROLL  
PKG.

SCOT TOWELS... 119 SHEET ROLL. 65¢  
SCOTTIES FACIAL TISSUE... 200-SHEET BOX. 59¢

## Italian Food Festival

JENNY LEE <b>LONG SPAGHETTI</b> 2 LB. PKG. <b>69¢</b>	FRIGO <b>RICOTTA CHEESE</b> 15 OZ. PKG. <b>97¢</b>	FROZEN <b>HORMEL LASAGNA</b> 20 OZ. PKG. <b>1.29</b>
--	---	---

PLAIN, MEAT OR MUSHROOM <b>RED OWL SPAGHETTI SAUCE</b> 32 OZ. JAR. <b>1.09</b>	JENNY LEE <b>LASAGNA</b> 1 LB. PKG. <b>59¢</b>	JENNY LEE <b>EGG NOODLES</b> 10 OZ. PKGS. <b>3.00</b>
---	---	--

DANTE <b>LONG SPAGHETTI</b> ... 5 LB. BOX. 2.19	CHEF BOY-AR-DEE <b>SPAGHETTI SAUCE</b> ... 15 OZ. JAR. 57¢
JENNY LEE <b>MOSTACCIOLI</b> ... 1 LB. PKG. 49¢	CHEF BOY-AR-DEE <b>SPAGHETTI &amp; MEATBALLS</b> or BEEFARONI... 15 OZ. CAN. 55¢
DURKEE <b>ITALIAN SEASONING</b> ... 1/4 OZ. 69¢	MUSHROOM & ONION, SAUSAGE & PEPPERS OR ONION & PEPPERS <b>RAGU CLASSIC SPAGHETTI SAUCE</b> ... 32 OZ. JAR. 1.29
<b>GARLIC SALT</b> ... 4 OZ. 57¢	

**WE FEATURE U.S.D.A. CHOICE AND RED OWL INSURED BEEF!**

FARM FRESH 3 LEGGED FRYERS... LB. **53¢**  
FARM FRESH DOUBLE BREASTED FRYERS... LB. **57¢**

**Charcoal-Grilled Chicken**  
Cut a 2 1/2 to 3-pound tender-herb in half. Season with pepper, poultry seasoning and cayenne pepper... if desired. Place chicken bone side down on grill...  
U.S. CHOICE & RED OWL INSURED THICK CUT ROUND STEAK... LB. 1.58  
ROTISSERIE ROAST... LB. 1.68  
BONELESS RUMP ROAST... LB. 1.68  
VEAL SHOULDER FLAVOREE SLICED BOLOGNA... 1 LB. PKG. 1.29  
PORK STEAK... LB. 1.19

**FRESH GROUND BEEF**  
HAMBURGER... 1.09  
GROUND BEEF CHUCK... LB. 1.29  
**HEINEMANN KITCHENS**  
READY TO SERVE TREATS  
BAR-B-QUE BONELESS BEEF RIBLETS... LB. 1.89  
SAUSAGE & PEPPERONI OUR OWN THIN CRUST PIZZA... 16 OZ. PKG. 1.68  
OUR OWN HOMEMADE DELI STYLE CHILI with BEANS... 1 LB. PKG. 79¢

**FROZEN SEAFOOD SALE**  
BOOTH HADDOCK FILLETS... LB. 1.99  
VAN DE KAMP'S FISH FILLETS... 12 OZ. PKG. 1.49  
RED OWL FISH STICKS... 1 LB. PKG. 1.19  
RED OWL BREADED SHRIMP... 1 LB. PKG. 2.59  
ARMOUR STAR SMOKEES... 12 OZ. PKG. 1.19  
ARMOUR STAR, REG. OR BEEF HOT DOGS... 12 OZ. PKG. 89¢  
HORMEL LITTLE SIZZLERS... 12 OZ. PKG. 99¢  
OSCAR MAYER SLICED BOLOGNA... 12 OZ. PKG. 1.19  
OSCAR MAYER, SLICED VARIETY PACK... 12 OZ. PKG. 1.59  
MORRELL'S BRAUNSCHWEIGER... LB. 79¢  
OSCAR MAYER SMOKIE LINKS... 12 OZ. PKG. 1.39  
OSCAR MAYER LITTLE PORK LINKS... LB. 1.99  
ARMOUR STAR BONELESS HAM... LB. 1.99  
HILLSHIRE FARMS POLISH SAUSAGE... LB. 1.59  
BEEF KIDNEYS... 4.51

INSTANT NESCAFE... 10 OZ. JAR. 3.99  
NABISCO, NUTTER-BUTTER COOKIES FIG NEWTONS... 16 OZ. OR 13 OZ. PKG. 79¢  
BETTY CROCKER, OATMEAL or PEANUT BUTTER BIG BATCH COOKIE MIX... 32 OZ. BOX. 1.69  
CHOICE OF GRINDS HARVEST QUEEN COFFEE... 2 LB. CAN. 4.69  
NESTLE'S HOT COCOA MIX... 24 OZ. PKG. 1.99  
BETTY CROCKER CHOCOLATE CHIP BIG BATCH COOKIE MIX... 32 OZ. BOX. 1.99

PRICES EFFECTIVE THRU SAT. SEPT. 30, 1978. QUANTITY RIGHTS RESERVED. NO SALES TO DEALERS.

**TIDE LAUNDRY DETERGENT**

**4.49**  
171 OZ. BOX

# WHITE PINE ONTONAGON

OPEN EVENINGS & SUNDAYS FOR YOUR SHOPPING CONVENIENCE

**APPLE-RAMA U.S. FANCY APPLES**

JONATHAN 3 LB. BAG <b>89¢</b>	NEW CROP DELICIOUS 3 LB. BAG <b>89¢</b>	McINTOSH 3 LB. BAG <b>89¢</b>
-------------------------------	---	-------------------------------

1/2 BUSHEL CARTON 12 LB. MIN. **3.99**

KETTLE FRESH CARAMEL APPLE DIP... 28 OZ. PKG. \$1.89  
SWEET FLAVORFUL HUBBARD SQUASH... LB. 17¢  
CRISP TENDER CABBAGE... LB. 19¢  
FRESH RUTABAGAS... LB. 19¢

MICHIGAN CONCORD GRAPES... 2 QT. BASKET \$1.59  
PURE FRESH, TROPICANA ORANGE JUICE... 1/2 GAL. 1.49  
DEL MONTE BREAKFAST PRUNES... 32 OZ. BAG 1.19  
FIRE PURE LOGS DURAFLAME II LOGS... EA. 99¢

**AIM TOOTH PASTE** 88¢  
6.4 OZ. TUBE

OILY, DRY OR NORMAL BRECK SHAMPOO... 15 OZ. BTL. 1.59  
REGULAR OR UNSCENTED BAN-ROLL-ON... 2.5 OZ. 1.29  
MELITTA COFFEE FILTERS... PKG. OF 40. 99¢  
MELITTA COFFEE MAKER... EACH 2.99

**Special!**

YOUR CHOICE, FROZEN **RED OWL VEGETABLES**  
CORN, PEAS, MIXED VEGETABLES, PEAS & CARROTS or SQUASH 10 TO 12 OZ. CANS

**3 FOR 89¢**

NEW FROM TOTINO'S, PEPPERONI, SAUSAGE or COMBO, FROZEN TOTINO'S CRISP CRUST "EXTRA" PIZZA... 14 1/2 TO 15 1/2 OZ. PKGS. **1.39**



# FINAL WEEK TO REGISTER



# PORCUPINE MT COMMUNITY SCHOOLS

...REGISTRATION FOR CLASSES WILL CLOSE SEPTEMBER 29TH  
\*\*\*\*\*

## ADULT HIGH SCHOOL COMPLETION

### Ewen-Trout Creek

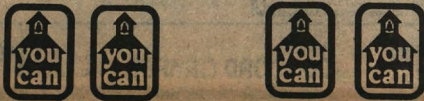
The Ewen-Trout Creek area PRE-SCHOOL begins on Monday, Oct. 9th, at 12:30 - 3:00 p.m. (Monday & Wednesday) at the First Lutheran Church in Ewen. The first 20 session period will last through the Dec. 18 meeting. Fee is \$25.00 Any youngster that is scheduled to enroll in kindergarten in 1979 or 1980 is eligible. For more information, contact the Community School office, 988-2350.

Adult High School Completion Schedule of Classes is as follows:  
Monday - World History & Government; Tuesday - English; Wednesday - Introductory Computer Programming; Thursday - Bookkeeping.

### White Pine

The White Pine area PRE-SCHOOL program will begin on Tuesday, Oct. 3rd, at 1:00 p.m. Registration will take approximately 15 minutes and the children will remain until 3:00 p.m. Classes will be held at the White Pine Elementary School in the former 7th Grade room. Fee will be \$17.00 per 10-week semester. The Pre-School Swimming Program will be discussed at the registration.

Adult High School Completion Schedule of Classes is as follows:  
Monday - Practical Math & Typing; Tuesday - Reading & Woodwork/General Shop; Wednesday - American History & Welding; Thursday - French & Speech. (All classes begin at 6:00 p.m.)



### Bergland

The Bergland area PRE-SCHOOL program will begin on Tuesday, Oct. 3rd at 10:00 a.m., at the St. Ann's Catholic Church in Bergland. Registration will take approximately 15 minutes and the children will remain until 12:00 p.m. The fee will be \$17.00 per 10-week semester. The Pre-School Swimming Program will be discussed at the registration.

A course in BELLY DANCING will begin in Bergland sometime early in October. The class will last for a six-week period with a fee of \$15.00 Call any one of your Porcupine Mt. Community School offices for further information or registration.

### Lake Gogebic & Crossroads

The LAKE GOGEBIC and CROSSROADS Senior Citizens Centers fall schedule of Completion Classes is as follows:

Monday - Psychology of Retirement, 1:00, Bergland; Tuesday - Ceramics, 9:00 a.m. and 1:00 p.m., Bergland; Wednesday - Stitchin' Time (sewing, crocheting, embroidery, needlepoint, etc.), 9:00 a.m., Bruce Crossing; Bowling - Golden Valley Bowl, 12 noon, Konteka, 1:00 p.m.; Thursday - Art & Crafts, 9:00 a.m., Bruce Crossing; Oil Painting, 12:30 p.m., Bruce Crossing; Sewing, 1:00 p.m., Bergland; Friday - Art & Crafts & Leather-crafts, 9:00 a.m., Bergland, Oil Painting, 1:00 p.m., Bergland.

Call your local OFFICE

**BERGLAND — 575-3518 WHITE PINE — 885-5407**

**EWEN-TROUT CREEK — 988-2350**

#### NOTICE TO THE DOG OWNERS OF ONTONAGON COUNTY

As of September 15, 1978, the Ontonagon County Sheriff Department will be taking care of the Animal Control Program in our County. In the past years, we have received numerous complaints in reference to dogs on the School Playgrounds.

I understand that some children like to take their dogs to school to show their friends. Some of these dogs are friendly, but some parents are still concerned about it. So please, owners, keep your dogs tied up because if the situation warrants it a citation will be issued.

s/GERALD J. KITZMAN - SHERIFF

White Pine A.A. & Al-Anon Meet Each Thursday At 7:30 pm - A.A. at Union Hall; Al-Anon at Apt Bldg 2, Apt 201. Open Meetings Last Thurs. Of Each Month at Union Hall. Public Invited. Mon. AM A.A. Meets at 9 am at Apt 201, Bldg 2. Al-A-Teen Meetings Are Held Each Wednesday at 7:30 pm at Apt Bldg 2, Apt 201 in White Pine.

PROFESSIONAL CLEANING SERVICE - Carpets, Upholstery, Floors, Windows. Call Don or Nancy Ashbrook, Ewen, Mi. Ph. 988-2279.

VISIT EWEN'S NEW VARIETY STORE. CRAMMED FULL! EXCITING! MAIN STREET - DOWNTOWN EWEN. Open Mon Thru Sat 9 to 5, Fri Nite Till 8. Open Also On Sunday of Log-Jam-Boree, Oct. 8. - 10 to 4. (Jam-Boree Is 6th, 7th, 8th.)

CHILD ABUSE OR NEGLECT - Ontonagon County - Call: Children's Protective Services, Weekdays: 8 am to 5 pm (906) 884-4951, or weekends: (906) 667-9681, for emergency service.



Write in.....

# THEODORE G. ALBERT

## DEMOCRAT

FOR

### 11th DISTRICT CONGRESSMAN

(Paid Political Advertisement By "Friends Of Ted Albert")

**MACRAME CLASSES** Starting 1st Week in October. Dates & Times To Be Announced. 10% Discount on supplies to anyone taking the class. \$8.00 for Six Weeks Per Class. Lots Of New Patterns & Ideas. Call 575-3319 after 5 or stop in at Sherry's Craft Corner in Merriweather.

**RUMMAGE SALE - GARAGE SALE** Men's, Women's, Infant's & Toddler's clothing. Miscellaneous household items. 8 Juniper Ct., White Pine. On Thursday, Sept. 21, from 9 am on!

**NEW! Quilted Strawberries** for yummy placemats. Still room in Macrame Class, Thurs. morning at 10 a.m. Sewing Machine Repairman will be here on Sept. 26. **JAN'S FABRIC SHOP**, Bruce Crossing.

**SUMMER CLEARANCE** --- Small Pieces, Slab Ends, Etc. Suitable For 10" Saw. Includes A Little Bit Of Everything From Apache Tears To Zebra Agate. . . \$1.00/Lb. **GEM-N-J Rocks & Jewelry**. By Appointment - Phone 885-5525.

## THE GOOD LIFE



"HER'S N HIS"  
Beauty Salon  
Air Conditioned  
"SPECIAL STYLING"  
- PERMS-CUTS -

**BETTY ERICKSON**  
LICENSED BEAUTICIAN  
& PROPRIETOR  
For Appointment  
Phone 885-5617  
36 ELM ST.  
WHITE PINE - MI.



**HARDY FOREST PRODUCTS**  
HOMELITE & JONSEREDS  
CHAIN SAWS  
"SALES & SERVICE"  
Mass City - Michigan  
Phone 883-3370

### CANDLELIGHT INN

3 Miles East Of  
Ontonagon On M-38  
**DINING ROOM**  
SERVING  
5:00 TO 10:00 DAILY

For Reservations  
884-9518

**MEINDL MUSIC SALES**  
GUITARS & INSTRUMENTS  
AND ACCESSORIES  
UNBELIEVABLE LOW PRICES  
PHONE: WHITE PINE 885-5415

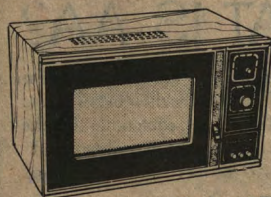
### \*\* NOTICE \*\*

**EQUALIZATION DIRECTOR POSITION OPEN**  
The Ontonagon County Board of Commissioners  
Is Seeking An Individual To Fill The  
Position Of Equalization Director.  
Applicants Must Have Experience In  
Property Tax Assessing And Equalization  
And Must Be Certified At Level 3 By The  
Michigan Board of Assessors.  
Resumes Must Be Submitted By  
4:30 P.M. On Tuesday, October 3, 1978.

SEND RESUME TO:  
Ontonagon County Controller  
Courthouse; 601 Trap Street  
Ontonagon, MI 49953

## Special This Week At RED OWL GOLD MEDAL SODA POP

28 oz. Btl. 3 for \$1.00 Plus deposit



**Norelco** MICROWAVE COOKING SYSTEM  
**MICROWAVE OVEN**  
**\$288<sup>88</sup>**

- Multi-Cook Variable power Selector System to: Bake • Roast • Defrost • Stew • Simmer • Keep Warm
- Built-in Browning System
- 3 position removable cooking and serving tray

- Fast and Easy
- Large Cooking Capacity
- 650 Watts of cooking power
- 35 minute dual speed timer
- Dual indicator lights and signal bell
- Deluxe full color illustrated Recipe Book

\*NORTH AMERICAN PHILIPS CORPORATION 1978  
LIMITED WARRANTY INCLUDES 5 YEARS ON  
MAGNATRON TUBE

### MICROWAVE by Anchor Hocking

1 QT. VERSATILITY PAN	3.88	2½ QT. BAKING RING	3.88
4 QT. SIMMER COOKER	5.88	11¼"x10¼" BACON RACK	3.88
12"x12" BAKING SHEET	3.88	11¼"x65/8 ROASTING RACK	3.88
8¾" MUFFIN PAN	3.88		

### ..... INVITATION .....

To A Silver Wedding Anniversary  
Celebration

FRIENDS & RELATIVES

Of

MAXINE & GEORGE  
STUESSER

Are Cordially Invited To Celebrate  
Their 25th Wedding Anniversary  
With Them --- On

SUNDAY --- SEPTEMBER 30, 1978

At  
THE EAGLES HALL  
Ontonagon, Mi.

Lunch --- 6:00 To 8:00  
Dancing --- 9:00 To 1:00

**WANTED** - Don't throw away that old lawnmower, mini-bike or any appliance with a small gasoline engine on it. Your donation of these items would be appreciated by the power mechanics class at the White Pine High School. Please call 885-5591.

FOR SALE - Trefoil Hay, Also Straw.  
Phone 988-2516.



## ATTENTION

ALL ONTONAGON COUNTY SENIOR CITIZENS

CLASSES STARTING SEPTEMBER 18TH FOR THE ACTIVE AND NOT-SO-ACTIVE.....APPLICATIONS AVAILABLE AT SENIOR CITIZEN CENTERS.

JUNE LIPINSKI, DIRECTOR OF SERVICES TO THE AGING IN ONTONAGON COUNTY, ANNOUNCES THE FOLLOWING SCHEDULE

FOR CLASSES SPONSORED BY THE PORCUPINE MOUNTAIN COMMUNITY SCHOOLS AT THE SENIOR CENTERS IN THE COUNTY.

### Lake Gogebic SENIOR CENTER BERGLAND

MONDAY.....NUTRITION MEAL AT NOON  
"PSYCHOLOGY ON RETIREMENT" AT 1 P.M.

TUESDAY CERAMICS 2 CLASSES 9 A.M. and 1 P.M.

WEDNESDAY SENIOR BOWLING At KONTEKA LANES, WHITE PINE At 1 P.M.

THURSDAY SEWING At 1 P.M.

FRIDAY ARTS & CRAFTS & LEATHERCRAFT At 9 A.M.  
OIL PAINTING 1:00 P.M.

### Crossroads CENTER BRUCE CROSSING

CLASSES BEING OFFERED IN: OIL PAINTING ARTS & CRAFTS SEWING  
CALL CROSSROADS CENTER, 827-3778 For The Daily Schedule!

### Cane Court ONTONAGON

MASS, GREENLAND and ONTONAGON Senior Citizens contact Pearl Carlson at CANE COURT, 884-9663, for the following classes if enough interest is shown:  
ART & WATER COLOR PAINTING MUSIC APPRECIATION BASIC COMMUNICATION  
SEWING

### WHITE PINE & ONTONAGON Senior Bowlers (MEN & WOMEN)

CALL: 575-3461 If You Want To Join The F\*U\*N Bowling On Wednesday Afternoon At The Konteka In White Pine.  
(Bowling Starts Sept 27)

Anyone Wishing To Enroll In A WOODWORKING CLASS To Be Offered At The Bergland School On Thursday Nights, Please Call - 575-3461

PLEASE COME --- JOIN AND ENJOY YOURSELF. YOU WILL LOOK BETTER, FEEL BETTER, AND STAY HEALTHIER IF YOU KEEP ACTIVE.

JUNE LIPINSKI - DIRECTOR

FOR SALE - 1973 Trail Blazer Travel Trailer. Self-contained, in very good condition. Ph. 883-3465.

APARTMENTS FOR RENT: In White Pine, one bedroom, unfurnished, includes utilities, stove, refrigerator, storage, TV system, laundromat, parking. Phone 885-5555 after 5 or 885-5371.

BINGO -- There's NEW Bingo - St. Jude's Church In White Pine. MORE FUN & BIGGER PRIZES. Starts At 7:00 P.M. Each Sunday.

Local Chapter of EMOTIONS ANON YMOUS Meets In White Pine Every Friday At 9:30 A.M. In Apt. 201, Bldg. 2. Everyone Is Welcome To Attend.



JUST \$2.00 PER INSERTION  
(Please Limit Ad To 30 Words Or Less)  
Phone 885-5557 or Mail To: Box 51  
"The Country Peddler"  
White Pine, Mi. 49971

Your  
message  
gets  
across  
better

IN  
NONESUCH  
COUNTRY PEDDLER

Get  
ACTION  
with  
WANT  
ADS

## WHAT IS AA?

Alcoholics Anonymous is a fellowship of men and women who share their experience, strength and hope with each other that they may solve their common problem and help others to recover from alcoholism.

The only requirement for membership is a desire to stop drinking. There are no dues or fees for AA membership; we are self-supporting through our own contributions. AA is not allied with any sect, denomination, politics, organization or institution; does not wish to engage in any controversy, neither endorses nor opposes any causes. Our primary purpose is to stay sober and help other alcoholics to achieve sobriety.

(Paid For By Contributions Of The)  
A.A. (World-Wide) Fellowship