

THIRD CLASS POSTAGE PAID
WHITE PINE, MICHIGAN 49971

Published
&
Edited
By

R.W. POWELL
G.B. POWELL

Published
Every
Wednesday



Nonesuch News

WHITE PINE, MICHIGAN 49971

VOL IV NO 31, WEDNESDAY, AUG. 4, 1976



.... They Departed From Agate Beach Early Thursday Morning, July 29th, And Headed For Ontonagon. This Photo Shows One Party Making Their Way Back To The Township Park After Meeting With The Welcoming Committee At The Ontonagon Harbor. Ontonagon Marks The 1,000-Mile Point In Their Voyage, Which Will Take Them From Montreal, Canada to Duluth, Minnesota. Twenty-six Hardy People, Out To Make A Monument In History, Out To Re-Live An Old Way Of Life And To Duplicate The "Voyageur" Existence Almost Identically!

SPORTSMEN SCHEDULE BRAT FEED

This Thursday evening at the Lake Superior Sportsmen' Club, members will enjoy an outdoor cookout of bratwurst with all the trimmings. Chef Smokey Domitrovich will be in charge with Bob Koski as his assistant.

Last week a group of shooters traveled to the Ottawa Club to shoot skeet. Pete Store posted the best score with a 20x25. Being a sport of high concentration and fast reflexes, John Domitrovich decided to keep score instead of shooting - so as not to interrupt his success at shooting trap. Currently he is top shooter on the double line, getting 28x30.

Ron Szyek posted his first perfect score - shooting a 25x25. Other scores ranged from 14 to 24.

On the team standings, with the gap between the teams narrowing down, Team 5 has a total of 811; Team 1 - 800; Team 3 - 790; and Team 4 - 760. Next Wednesday, the club's team will travel to Chassel, hoping to hold on to their 30-bird lead and First Place standing.

ONTONAGON COUNTY SOCIAL SERVICES SETS OPEN HOUSE AT NEW OFFICES

On August 6, 1976, the Ontonagon County Department of Social Services will hold an Open House at their new offices from 1:00 to 4:00 p.m. All those interested in attending are cordially invited to tour the new offices located at 904 River Street in Ontonagon, Michigan.

The main entrance is directly across from the Ontonagon V.F.W. and ample parking is available to the rear of the building.

Coffee will be served and all staff members will be available to assist with the event.



.... As Evening Drew To A Close, The Hardy Voyageurs Began To Look Forward To A Restful Night And Mighty Lake Superior Seemed To Reflect The Over-All Atmosphere -- As She Gently Stilled Her Waters And Hid The Sun From View. Perhaps The Majority Of The Voyageurs Now Realized How Close They Are To Home And The Anticipation Would Make It Difficult To Sleep Or -- Would These People Feel Different Than When They First Started? Maybe The First Voyageurs Spirit Has Carved An Impression In A Few Minds. . . And, Now Home Seems Too Close At Hand!

GOLDEN RULE OFTEN FORGOTTEN BY SOME CAMPERS SAYS FOREST SERVICE

A happy camper has a clean camp, sufficient equipment, observes rules, is considerate of other campers, and leaves a clean campsite. Unfortunately, according to Recreation Officer Bob Burton of the Ottawa National Forest this is not always the case.

With camping season in full swing, many infractions of Forest Service regulations have been reported. While the majority of visitors and campers to National Forest campgrounds and recreation areas recognize that the rules are meant to control actions that cause damage to natural resources and facilities, there are some who "forget."

They forget, for instance, that -- Destroying, defacing, or removing any natural feature or plant is prohibited. Example: cutting of live trees, pounding nails into trees, hanging lanterns on trees in such a manner that the tree becomes "scorched."

Building fires outside of fire rings, grills, etc. is prohibited.

Draining or dumping refuse or waste is not permitted except in places or receptacles provided for such use. Example: Water allowed to drain from sink in trailer onto ground.

Before departure, failure to leave a clean campsite is prohibited. Example: cigarette butts, flip tops from cans left on ground, picnic tables left sticky and dirty.

Pets must be on a leash not longer than 6 feet and under physical restrictive control at all times. Example: a large dog on a 10-foot leash is not under control.

Defacing, destroying, or removing public



.... Boat Master Rudy Voulkners (left) And One Of His Crew Members Unload Their Craft, Pictured Here With The Rest Of The Canoes In The Party. Mr. Voulkners Is An Active Church Fellowship Leader In Duluth And Was Very Cooperative In Answering The Flurry Of Questions Directed At Him By The People Who Had Gathered On The Beach. Ahead Of The Group Is The Distance To Bayfield, Wisconsin. . . Last Stop Before Duluth & Home. The Voyage Began On June 15th With Their Departure From Montreal, Canada.

property is prohibited. Example: spray painting on picnic tables without protecting the surface.

Operating or using audio devices such as radio, TV, musical instruments, etc., in such a manner so as to disturb other persons is not allowed.

Failing to maintain quiet in a campground between the hours of 10 p.m. and 6 a.m. is prohibited.

These are but a few rules and examples of violations. According to Burton, violation of these regulations is subject to fines of \$10 to \$500 and up to six months imprisonment or both.

A recent vandalism incident occurred at Nesbit Lake and Norway Lake on the Kenton Ranger District which resulted in the arrest of a 19-year old Trout Creek man. He was sentenced and charged with malicious destruction of property and fined \$335 (restitution to U.S. Government), given a 30-day suspended jail sentence, and his vehicle operator's license was suspended for 90 days. In this case, nine 4"x4" sign posts were broken, a new wooden gate was knocked down; steel hinges, gate chain, and locks all were damaged.

"A helpful suggestion to campers," Burton said, "is to consider your campsite as an extension of your home and backyard and treat it as such."

A copy of the "Regulations Governing the Occupancy and Use of National Forest Recreation Sites and Areas" is posted at all National Forest Recreation Sites. A copy can also be obtained from the Supervisor's Office of the Ottawa National Forest in Ironwood.

2022.15.33

TRIP TO U. P. FAIR OFFERED TO AREA CHILDREN OF SAFETY PATROL SERVICE
 Announcement of the Annual "Trip To The U.P. Fair" for children who served as volunteer Safety Patrols has been made, with the trip set for the 17th of August. Each year the Michigan State Police Department sponsor a completely paid trip to the U.P. Fair for those children who served their school and community by acting as Safety Patrols. Details on hour of departure and return and other information regarding the trip will appear in an upcoming issue of the paper.



ONE OF THE "OLD-TIMER'S" IN THE TOWN OF ROCKLAND IS PICTURED IN THE PHOTO ABOVE. THE HOME WAS BUILT IN 1862 BY THE GRANDPARENTS OF THE PRESENT RESIDENTS - JOHN SEIFERT & MARY ANDERSON - WHEN THEIR MOTHER WAS THREE YEARS OF AGE. THANKS TO MRS. ANNA SUNDIN OF ONTONAGON, A SISTER OF THE PRESENT RESIDENTS, WHO SENT US THE PHOTO.

THANK YOU...

Voters of Ontonagon County, for the fine support given me in the election Tuesday.

Since Prosecuting Attorney is not a true political office, I do not feel that I have become a politician by seeking election. I continue to realize that "votes" mean people, and people's trust and cooperation is essential to decent, constructive law enforcement.

Thanks,

ROY GOTHAM

"DELICIOUS SPECIALS THIS WEEK"

Konteka

Wednesday Luncheon ****Potted Beef With Vegetable****
*****Chicken Peg Legs*****
 Also ***With Shoestring French Fries***
 Homemade Cream Of Tomato Soup
 Wednesday --- Dinner **"Fresh Lake Trout"**
 Thursday --- Luncheon *****French Dip*****
 Homemade Corn Chowder
 Thursday Dinner **Ladies Nite - Tenderloin Dinners**
 Friday --- Luncheon *****Fishwich Deluxe*** Fish Frvs**
 Also *****Egg Salad / Tuna Salad Sandwiches*****
 Friday --- Dinner *****Seafood Smorgasbord*****
 This Saturday Evening - Closed For Private Parties
 Sunday Specials You'll Remember
 Breakfast Buffet - A Divine Menu
 Including This Week - Chicken Giblets/Gravy
 Sunday Dinner - Marge's Famous Familystyle
CHICKEN DINNER
 Also - "Pepper Steak On Rice"
SPECIAL - THIS WEEK - SPECIAL
 After-Dinner "Coffee Supreme"

Coming Events

Sculpture
by Fred Aman

Frederick Aman, northern Wisconsin sculptor who specializes in wildlife sculptures cast in bronze, will hold a one-man show at the Mineral River Plaza, White Pine, on August 5th and 6th.

The exhibit of Fred Aman's works will be held in the lobby of the Citizens State Bank in White Pine.

Hours of the show will be from 9 a.m. to 5 p.m. on the 5th and from 9 to 3 p.m. on the 6th.

THE PUBLIC

IS CORDIALLY INVITED
 TO VIEW THIS

OUTSTANDING ART EXHIBIT

ANIMAL CLINIC - Will be held on Saturday, August 7th at the Ontonagon Fire Hall - from 9 a.m. to 11 a.m.; and at the Bruce Crossing Fire Hall from 1:00 p.m. to 3 p.m. Rabies, booster shots, etc. Dr. Penegor will be attending.

WHITE PINE ANNOUNCES FOOTBALL SCHEDULE FOR 1976

The 1976 football season for the White Pine Warriors will open on Saturday, Sept. 4th in a home game against Houghton at 1:30. The schedule of other games is as follows: Saturday, Sept 11, at Bessemer, 8:30; Friday, Sept. 17, At Ontonagon, 7:30; Saturday, Sept. 25, At Wakefield, 3:00; Saturday, Oct 1, Lake Linden here, 1:30; Saturday, Oct 9, At North Dickinson, 2:30; Saturday, Oct. 16, Baraga here at 1:30; final game on Friday, Oct. 22, Ewen-Trout Creek here, 4:30. All times are eastern.

The ONTONAGON COUNTY COMMUNITY CHORUS will present the cantata, "I Love America" in White Pine on August 28, 1976 at 7.30 p.m. at the White Pine Grade School. The chorus will be directed by Jim Joplin and the band by Bruce Johansson. The program will be presented to the public free of charge.

WHITE PINE COMMUNITY PICNIC SET

Residents of White Pine, Legion Post 462, and 462 club members and donors - Let's go to the Annual White Pine Community Picnic - sponsored by the White Pine American Legion - on Sunday, August 15, 1976 - at 10:00 a.m. - in Green Park, Green, Michigan!

The lunch - served at 12 noon and 5 p.m. - will include chicken, hot dogs, beans and potato salad, also ice cream and refreshments.

Admission will be - Single White Pine resident, \$3.00; Family White Pine Residents, \$5.00; Outside-Guests (2), \$10.00.

Bring your own knives, forks, plates, cups and pitchers.

A 50/50 Drawing plus hourly raffle tickets will be on sale at the gate. There will be games and prizes for the kids.

Volunteer servers are always needed.
SEE YOU AT THE PICNIC!!!

Lake Superior Credit-Union
 (FORMERLY THE WHITE PINE CREDIT UNION)
 HAS OPENED SOME NEW DOORS!
 IF YOU LIVE OR WORK IN THESE TOWNSHIPS ---

CARP LAKE, BERGLAND, BOHEMIA, GREENLAND, MATCHWOOD, MC MILLAN, ONTONAGON AND ROCKLAND --- YOU CAN BECOME A MEMBER -- AND EXPERIENCE

THE OVERWHELMING BENEFITS THE CREDIT UNION OFFERS!

FORGET IT!

Things worth working for are worth saving for at the credit union.

It Pays Off

CERTIFICATES --- 6% --- 1 YEAR

\$1,000.00 MINIMUM

Think Ahead



They'll Be Ready For College Sooner Than You Realize!

Be Proud



To Save For Their Education In A Savings Account Here



They're Off To A Great Start In Life!

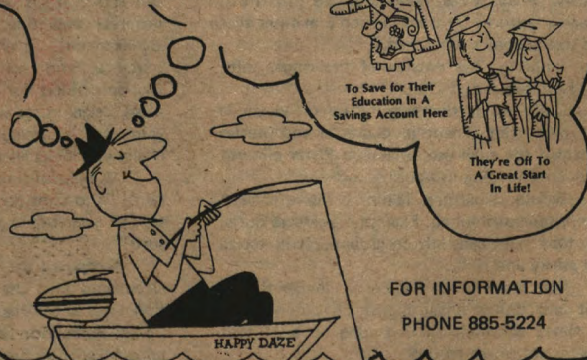
PLANT IT!

ENJOY IT!



Where It Will Grow With Interest

Spend the Money You've Saved Any Way You Like!



FOR INFORMATION
 PHONE 885-5224

Advertisement for Lake Superior Credit-Union, featuring illustrations of financial benefits and a fishing scene.



Mon.-Fri. 9 to 9
Sat. 9 to 6
Sun.-Ont. 9-6
White Pine 10-3

RED OWL
THE FRIENDLY FOOD STORE

STORE HOURS

RED OWL IS A U.S.A. AUTHORIZED FOOD STAMP STORE
Food Stamps welcome at Red Owl!

ONTONAGON

422 RIVER STREET

RED OWL

WHITE PINE

MINERAL RIVER PLAZA

MID-SUMMER STOREWIDE SALE!

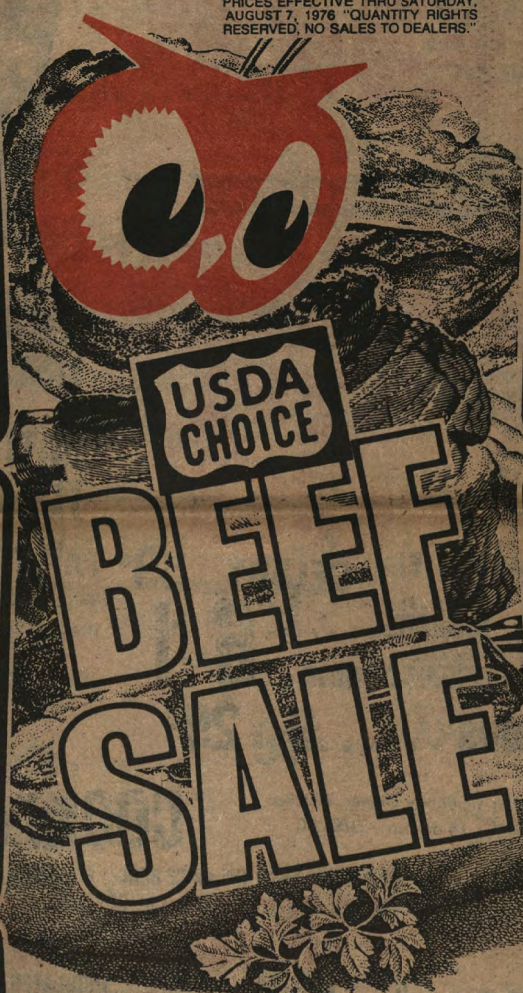
PRICES EFFECTIVE THRU SATURDAY, AUGUST 7, 1976 "QUANTITY RIGHTS RESERVED, NO SALES TO DEALERS."

SIRLOIN STEAK

\$1.59

USDA CHOICE

U.S. CHOICE BEEF T-BONE STEAK. **\$1.79** LB.



BLADE CUT

CHUCK STEAK

68¢

USDA CHOICE

LB.

STANDING BEEF RIB ROAST

\$1.19

USDA CHOICE

5-7th RIB CUT

ROAST

ROAST EYE STEAK **\$2.99** LB.
BONELESS
SWT TIP ROAST **\$1.59** LB.

BONELESS BOTTOM ROUND STEAK

\$1.39

USDA CHOICE

FORMERLY FAMILY STEAK

BONELESS TOP ROUND **\$1.59** LB.

CUT FROM THE CHUCK

BONELESS BEEF ROAST

99¢

USDA CHOICE

BONE-IN RUMP ROAST **\$1.39** LB.

RED OWL OR AGAR

Canned Hams

3 **\$4.99** LB. TIN
5 **\$7.99** LB. TIN

SMOKED HAM

SHANK PORTION - LB. 89¢
WHOLE OR BUTT - LB. 99¢

JENNIE-O, FROZEN, DARK MEAT

Turkey Roast ... 2 LB. BOX **\$1.98**

JENNIE-O, FROZEN WHITE & DARK MEAT **Turkey Roast .. 2** LB. BOX **\$2.58**

ARM CUT STEAK

99¢

USDA CHOICE

BEEF CHUCK

U.S. CHOICE BEEF, BONELESS
CUBED STEAK. . . LB. \$1.69

LaChoy Ramen Noodles, Beef, Oriental Or Chicken --- 3 oz. pkg. --- 4 / \$1.00

Creamettes Juniores - 5 oz. pkg. - 5/\$1.00
Hunt's Tomato Sauce / 15 oz can / 3 For \$1.00
Heinz Baby Food - Strained Fruits & Veg's. 4 1/2 Oz. Jar --- 7 / \$1.00

WHITE PINE
MINERAL RIVER PLAZA

PRICE REBEL
JOSEPH J. CRONAN & FLORIAN J. MOHAR
-- OWNERS & OPERATORS --

ONTONAGON
422 RIVER STREET

THIS WEEK'S PRICE REBEL ZINGER SPECIAL

PRICE REBEL WISE BUY

Kingsford Briquets
10 LB. BAG CHARCOAL **88¢**

PEAK OF THE SEASON...FRESH, REGULAR ELBERTA

PEACHES **33¢**

BEST FOR CANNING, FREEZING, OR OUT-OF-HAND FRESH EATING!

MINIMUM WEIGHT **16 LB. CRATE** ... \$4.19 PER LB.

MIX 'EM OR MATCH 'EM!

CELERY **39¢**

GREEN PEPPERS **5 \$**

CUCUMBERS **5 FOR**

JUMBO YELLOW ONIONS **2 LBS 29¢**

GREEN PEPPERS **6 \$**

GREEN ONIONS **6 FOR**

ALPO DOG FOOD Beef Chunks Dinner Or Puppy Dinner, Chicken & Egg or Egg & Beef. 14 oz. can --- 3/\$1.00

ENGLISH MUFFINS **3 14 OZ PKG \$1**

Squeeze-A-Snack **69¢**

Spaghetti **4 FOR \$1**

VEGETABLES **4 FOR \$1**

TOTINO'S PIZZA **\$1.59**

THERM-O-WARE
DURABLE, INSULATED SERVING WARE

THIS WEEK'S FEATURE!
12 OZ. TUMBLER **37¢**

COMPLETE PIECES ON SALE EVERY WEEK. GET DETAILS IN STORE!

CRISCO SHORTENING **3 \$1.43**

POT PIES **4 \$1.43**

WAGNER DRINKS **3 \$1.43**

HERSHEY'S SYRUP **39¢**

CANE SUGAR **10 \$2.19**

COOKIN' POUCHES 4 / \$1.00

FLAVOREE SALAD DRESSING **59¢**

CHEESE **\$1.29**

PARMESAN CHEESE **\$1.29**

BRIMFULL PEAS **4 FOR \$1**

FREE Calculator

APPLY MARK & ELECTRONIC

ADAPTOR **3.95**

Farmdale Milk **\$1.29**
1% Per Gallon - \$1.29 L.B.

Cake Mixes **57¢**

CRISCO OIL **\$1.19**

Baking Chips **2 FOR \$1**

MINI PIES **3 FOR \$1**

MACARONI DINNER **4 7 1/2 OZ PKGS \$1**

Tomato Sauce **6 FOR \$1**

Tomato Paste **4 8 OZ \$1**

STRAWBERRIES **3 FOR \$1**

GRAPE JUICE **4 FOR \$1**

KLEENEX FACIAL TISSUE **2 FOR \$1**

KETCHUP **3 / \$1.00**

Bufferin **98¢**

PORK & BEANS **4 \$1**

P'nut Butter **85¢**

MARASCHINO CHERRIES **49¢**

DRINK MIXES **5 FOR \$1**

NESTEA TEA MIX **\$1.69**

JEL GELATIN DESSERTS **5 FOR \$1**

Marshmallows **3 / \$1.00**

ENGLISH MUFFINS **3 FOR \$1**

HASH BROWNS **3 \$1**

COLD CUPS **.100 IN PKG 99¢**

PAPER PLATES **25 IN PKG 49¢**

Durkee French Fried Onions **3 oz can - 3/\$1. 9 Lives Cat Food - 6 oz can - 5 / \$1.00**

Kraft Mozzarella Cheese/Sliced/16 oz pkg/ \$1.89

AIM Toothpaste / 4.6 Oz Tube / 58¢

Tame Creme Rinse / 8 Oz Btl. / 89¢

Farmdale American Cheese / Sliced / 12 Oz Pkg 98¢

Hefty Scrap Bags With Holder - Pkg of 25 - 2/\$1.00

Peach Pie Glaze - 18 oz jar. . 79¢

Mr. C Flavored Fruit Drinks - 8 oz Btl. - 8/\$1.00

REBEL COUPON
KINGSFORD BRIQUETS
Charcoal **88¢**

REBEL COUPON
POST CEREAL
SUGAR CRISP **83¢**

REBEL COUPON
IMPERIAL LIGHT BLEND STICK
MARGARINE **39¢**

REBEL COUPON
TOP CHOICE BEEF
DOG FOOD **\$1.99**

REBEL COUPON
TONE
BATH BARS **2 59¢**

REBEL COUPON
Glad Trash Bags - 30 Gal Size - Pkg of 10 - 89¢. Limit 1 pkg per coupon. Limit 1 coupon per customer. (cxx0725) Red Owl

REBEL COUPON
Kotex Reg, Super, Maxi Pads - \$1.39. Limit 1 pkg w/coupon. Limit 1 coupon per customer. (cxx0735) Red Owl

REBEL COUPON
Country Time Lemonade Mix - Makes 15 qts, 50 oz cann. \$1.79. Limit 1 per coupon. Limit 1 coupon per customer. (cxx0730) Red Owl.

HUNT'S **59¢**
KETCHUP (20 OZ. BTL.)

About 4-H



The Ontonagon County 4-H Advisory Council is sponsoring a "Bake Sale & ?" on August 6th at the State Bank of Ewen, basement conference room, beginning at 10 a.m.

Donations of baked goods, sandwiches, craft items, plants, bazaar items, time, etc., will be appreciated.

If you are in the Ewen Area that day, stop in for coffee and see what we have for sale!

Gail Jousma, our 4-H Labo Exchange youth, arrived in Japan on Friday, July 23rd. She spent two days of orientation at the Olympic Center in Tokyo. Her Japanese "sister" - Rika Nakayama - was very happy to see her and asked if she brought sugar-coated cereal and green kool-aid (sent some air-mail). Sugar coated cereals are not available in Japan but they do have rice crispies and corn flakes.

Gail and Rika were to go to Rika's home on Sunday, and in her letter to home Gail also mentioned that it was very warm; she had seen Mt. Fuji from the air as she flew into Japan; and she has exchanged her American money for yen. More news from Gail as it arrives home.

We are looking for volunteer 4-H leaders for a new 4-H project in Wilderness Adventure. "Challenge" was initiated over a year ago thru Michigan State University. It is designed to tax the mental, physical, and emotional capabilities of today's youth. "Challenge" will help build self-confidence and a more positive self-image.

"Challenge" activities include wilderness survival, climbing, caving, obstacle courses, pioneer Indian skills and lore, backpacking, canoeing, snowshoeing, skiing (Nordic).

Leaders have been qualified to teach this course to potential 4-H leaders in the U.P. Training workshops will be held in Marquette on September 17-18, October 9-10, and at Pictured Rocks on January 15-16 (Winter Camp Out.)

For further information contact the Extension Office, 522 River St., Ontonagon or call 884-4386.

SEVENTH IN DNR HUNTER SAFETY SERIES SOON AVAILABLE

The seventh lesson plan in the Department of Natural Resources' instructional series for Michigan's 5,000 hunter safety teachers will be available after July 26 from the Law Enforcement Division, Recreational Safety Section, Box 30028, Lansing, 48909. Lesson 7 concerns the hunter's role in conservation.



All WHITE PINE HIGH SCHOOL FOOTBALL CANDIDATES are requested to attend a meeting on Friday, August 6, at 9:30 a.m. in the library of the high school. All players can pick up their physical exam cards in the high school office beginning Monday, August 2. Physical exams should be completed by August 9th.

Attention - WOMEN'S WEDNESDAY LATE SHIFT LEAGUE - KONTEKA LANES. There will be a meeting of officers and captains at the Konteka, Wednesday, August 11 at 7 pm. If you cannot attend and plan to bowl, please send another member of your team or notify Virginia Gentiline or Betty Rexses. Anyone interested in subbing please notify Betty Rexses.

HAS ANYONE SEEN THE LOWER PENINSULA OF MICHIGAN LATELY?

Iron Mountain, Mi. — Has anyone seen the Lower Peninsula of Michigan lately?

Residents of the northern part of the state - better known as the Upper Peninsula or the "U.P." have been asking this question, barely able to conceal their satisfaction.

The Lower Peninsula, which makes up two-thirds of Michigan, simply vanished from the cover map of the American Automobile Association's 1976 Tour Book for Michigan and Wisconsin.

"For years, the U.P. has been left off maps of Michigan, and we can't help but chuckle a bit at the mapmaker's oversight," says Bob Helwig, executive manager of the Upper Peninsula Travel & Recreation Association, Iron Mountain.

The prestigious AAA Tour Book displays an outline map of the Badger and Wolverine states superimposed on a field of daisies. The only problem is there are just daisies where Detroit, Grand Rapids, Flint and the entire Lower Peninsula should be.

Some folks in the U.P. are arguing it isn't all that bad. After all, when the Legislative chambers in the state capitol in Lansing were carpeted a few years ago -- with an outline of the state in the center -- the Upper Peninsula was nowhere to be found. And when the Michigan Bicentennial emblem was designed only the eastern tip of the U.P. appeared.

AAA officials are a bit red-faced. As most travelers have known for years, the association knows everything about every place under the sun. If the AAA isn't aware of it, it just doesn't exist. U.P. folks are beginning to wonder. . .

GUSTAFSON'S PARENTS OF A SON

Bob and Vita Gustafson of Marquette are the parents of a son, Jeremy Scott, born on July 27th. Jeremy was 8 lbs, 15 3/4 oz. and 23 inches long at birth. Grandparents are Dr. & Mrs. Karl Hill of White Pine.

FORMER RESIDENTS PARENTS OF GIRL

Dick and Julie Grass, formerly of White Pine and now residing in Ottawa, Illinois, are the parents of a baby girl, Kathryn Marie, born July 19th. Mr. Grass is the general manager of mining operations for Ottawa Silica Company and the family lives at 2714 Cheri Lane in Ottawa.

Salt & Lick FRI
"TRACER" AUG. 6 NITE DANCING

PAVING

We'll Pave The Way... Smoothly

Highways or byways . . . drive-ways or walkways. Whatever the paving job, big or small . . . rely on us, the asphalt specialists.

ANGELO LUPPINO, INC.

GENERAL CONTRACTOR
CONTACT "U. D. I."
For Further Information
--Phone 885-5175--

COUNTY SENIOR CITIZENS' PICNIC HUGE SUCCESS - OVER 300 ATTENDANCE

The Ontonagon County Senior Citizens' picnic can be heralded as a huge success. It was a beautiful day with 300 or more attending.

Speakers from State and Local Governments gave informative talks about pending legislation pertaining to Senior Citizens. Levi Etelamaki, coordinator of Title VII of the U.P., and Kathryn Kumkowsky, Director of Area Agency on Aging for the U.P., spoke on programs available to the Seniors of our county under Title III funding. Clarence Maloney, representing the Ontonagon County Board of Commissioners, said the Board is pleased that programs for the seniors in our county are going so well, and commended June Lipinski, Director of Comprehensive Services to the Aged of Ontonagon County, for devotion to her job and the seniors she serves. Dan Ojala, Chairman of the Ontonagon County Commission on Aging, stressed the importance of Seniors letting the Commission know what their needs are and what programs they would like. He also spoke of the part Community School Programs can and have helped the Seniors to obtain. These programs have helped many realize that growing older can be a beautiful experience, and there are many joyful days ahead by partaking in programs available to fill in some of their otherwise lonely hours.

The Come Alive Singers from Ewen were marvelous and their program was enjoyed by all. Art Moilanen with his accordion and Mike the guitarist played many old-time songs and Finnish polkas. The Seniors joined in, singing and dancing to their music. A good time was had by all attending.

Over forty door prizes were given away and the big event of the day was the crowning of this year's King and Queen - the oldest man and woman attending. Mathelda Eisermann, Bruce Crossing, 94 years of age, and Charles Juapperi, also of Bruce Crossing and 91 years of age, were the honored couple this year.



Guest Speakers At The Senior Citizens Picnic Held At Adventure Mt. Included: (L. - R.) - Levi Etelamaki, Title XII Nutrition Program of Region XI-U.P.; Don Ryan, Representative of Congressman Phillip Ruppe; Clarence Maloney, Vice Chairman Ont. Cnty Bd Commissioners; June Lipinski, Director-Comprehensive Services to the Aging-Ont. Cnty; State Representative Russell Hellman.



Crowned King & Queen of the 1976 Senior Citizens Picnic Were (left) Charles Juapperi of Bruce Crossing, 91, and (right) Mathelda Eisermann, also Bruce Crossing, age 94.

EDITORIALS

PYROMANIA - A Mania For Starting Fires;
VANDALISM - Wanton Destruction of Property;

RESPONSIBILITY - The state of being responsible, duty, charge. This summer has seen a severe drought inflict its penalty on the area. Miraculously, there have as yet been no forest fires which local firefighters were not able to control. During this same period of time, however, an unprecedented number of "unnatural" fires have been detected and brought under control before irreparable damage to property, natural resources, and possibly even to human life were done.

These fires were set by children in locations in and about the White Pine townsite. It is inconceivable that the parents of these children could be aware of the dangerous and illegal activities of their children and not take action to stop them. Idle summer hours often put mischievous thoughts into the minds of idle children. Perhaps more planned activities and a bit more supervision are all that is necessary to channel the incomparable energies of children into constructive and safe patterns. Surely none of us would willingly invite the responsibility of knowing that our children are the cause of loss of property or life. It is the responsibility of society to punish a convicted lawbreaker. It is, however, the responsibility of parents to teach their children to follow the guidelines which are necessary if a society is to protect all of its citizens. Vandalism of public or private property is "breaking the law" and is punishable by the law. Education of children to this fact is the responsibility of parents!

HISTORY IS STREWN THICK WITH EVIDENCE THAT A TRUTH IS NOT HARD TO KILL, BUT THAT A LIE, WELL TOLD, IS IMMORTAL.

PRE REGISTRATION DATES TOLD FOR PORCUPINE MT. COMMUNITY SCHOOL'S FALL PROGRAM

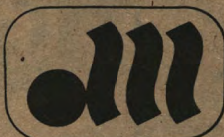
Dan Ojala and Dan Linna, co-ordinators of the new Porcupine Mountain Community School Program have announced the opening of the Fall Program of classes for the week of September 13. The newly organized program is anticipating a banner year, with a full complement of classes to assist the adult student in achieving his or her high school diploma.

Pre-registration will begin on August 9th for persons in Ewen-Trout Creek, Bergland, and White Pine areas at the following places and the listed times. Students, especially those planning to apply for veterans benefits, are urged to take advantage of the early registration so that the best possible schedule of classes and times can be arranged. Registration will be held at Ewen-Trout Creek on Monday through Thursday from 9 a.m. to 5 p.m. In White Pine the days and hours will be Tuesday and Thursday from 1:00 to 5:30 p.m., and in Bergland on Wednesday from 1:00 to 5:30 p.m. Counseling and registration at each location will be held in the high school building. Anyone unable to attend during the scheduled times is invited to make an appointment by calling any of the following: White Pine, 885-5407; Bergland, 575-3518; or Ewen-Trout Creek, 988-2350.

THANK YOU

A big thank you to Rod Repaal and Ward Helakoski, coaches of the White Pine Babe Ruth team, for their time and effort spent with the boys this season. It is because of their interest that there was a Babe Ruth team and we are deeply grateful.

A Baseball Fan



DOMARC

GAVICON
 Antacid with Alginate Acid
 100's **3⁹⁹**

VASELINE INTENSIVE CARE LOTION
 24 oz. Regular Only **1⁴⁷**

EMPIRIN COMPOUND
 For relief of pain 100's **97^c**

ARRID EXTRA DRY
 8 oz. Reg., Unscented or Reg. Light Powder **97^c**

Curity SUPER SOFT PUFFS
 260's **2/^{\$1}**

TOOTHBRUSHES **4/^{\$1}**



MORE - SAVINGS!

As a Domarc Member Store, I've teamed up with a number of Independent Professional Pharmacists throughout the state. Together we're able to buy products in huge volume. The savings I receive through my Group Purchasing Power - I pass on to you! That's why the Domarc on my door means more - More Savings - on all your Health and Beauty Aid needs. (Domarc - sponsored by the F. Dohmen Co. "Serving Wisconsin Pharmacists since 1858.")

COUPON
 DOMARC
SUPER CRICKET
 by Gillette
\$1.00

COUPON
 DOMARC
PHILLIPS' MILK OF MAGNESIA
 12 oz. Reg. or Mint **99^c**

COUPON
 DOMARC
Johnson & Johnson COTTON SWABS
 400's **99^c**

COUPON
 DOMARC
CEPACOL
 Mouthwash
 20 oz. **1⁴⁹**

COUPON
 DOMARC
CLEARASIL
 0.65 oz. Reg. or Vanishing **77^c**

COUPON
 DOMARC
Clairol LONG & SILKY
 8 oz. Reg. or Extra Body **1²⁹**

COUPON
 DOMARC
Mennen QUINSANA
 Foot Powder
 3 oz. **1¹⁷**

COUPON
 DOMARC
NOXZEMA
 Skin Cream
 16 oz. **1⁷⁷**

COUPON
 DOMARC
Gillette TRAC II
 5 Twin Blade Cartridges **77^c**

COUPON
 DOMARC
BAYER ASPIRIN
 100's **97^c**

SHOP THE STORE WITH ON THE DOOR

LOU'S SUPERIOR PHARMACY

ONTONAGON MICHIGAN

PHONE 884-2002

PROSPECTING IN THE TERRITORY

Garage Sale - 47 Tamarack, White Pine, Saturday August 7, 9:30 to 1:00. School clothes, jackets, high chair, infant seat, TV stand, blankets, bedspreads, curtains, toys, games, & more.

THANK YOU VOTERS FOR YOUR SUPPORT
Roy Gotham

Lost - In the vicinity of the White Pine dump - A bag of children's clothing, on Tuesday, July 27. Please call 884-4784.

For Sale or Rent - 3 bedroom mobile home in Rockland. Partially furnished or unfurnished. Phone 886-2627.

Child Abuse or Neglect - Ontonagon County - Call Children's Protective Services: Weekday's 8:00 a.m. to 5:00 p.m. 906-667-0444. After 5 p.m. or weekends 906-667-9581 for emergency service.

We Will Be Making PASTIES Every Thursday At The White Pine American Legion. Order Before Thursday By Calling 885-5471.

For Sale - Motorola AM-FM Stereo Receiver w/ built-in 8-track player. Separate Motorola turntable and 2 speakers. Ph 884-2950 anytime.

For Sale - 1973 Ford Pinto, 44,000 Miles. Also, 1969 Dodge Charger. Phone 886-2665.

For Sale Or Rent - 3 Bedroom Home with attached 2-car garage on 1 1/2 lots. Ph. 885-5733.

Neighborhood Rummage Sale - Lots of Toys & Clothes. 101 Alder Lane, White Pine. Friday, August 6 - 10 a.m. until 2:30 p.m.

Al's Sport Shop is now running a 20% Off Sale on all fishing equipment including two 1976 Mercury outboards, one is a 7.5 hp & one 20 hp. We also have a 1975 Mercury 20 hp with only 10 hrs. use for \$550.; 1 1976 Ski Doo Oly 300 for \$850. Also coming soon - the 1977 Ski Doo's. Call 827-3466 - Bruce Crossing.

Custodian Wanted - For information on hours and related duties, see the Postmaster, Ontonagon, Michigan.

For Rent - 2 bedroom house in White Pine. Ph. 885-5148 (evenings) 885-5234. Unfurnished.

Item For Sale - 1974 Yamaha 175 Trail Bike In very good condition, needs engine tune, \$300. Call 885-5795 after 5 p.m. Also, 1971 Ford Wagon - hunting, fishing car. Good motor, new tires, poor body. \$300.

For Sale - Gigantic Moving Sale - 10 a.m. Saturday, Aug. 7, 34 Tamarack, White Pine. 100's of items including clothes, furniture, sporting equipment, toys.

White Pine A.A. - Al-Anon meet every Thursday night, 7:30 p.m. - A.A. at Union Hall. Al-Anon at Faith Lutheran Church. Open Meeting last Thursday of each month. Public is invited. Al-A-Teen Meetings are held on 1st & 3rd Tuesday at Bergland Catholic Church, 2nd & 4th Tuesday at White Pine Catholic Church.

BINGO - Thursdays - At the American Legion Post, White Pine. Starting at 7 p.m. Every Thursday except holidays.

New Listing - 1900 sq. ft. 3-bedroom home on large corner lot. Paneled breezeway & 2-car garage, fireplace, natural gas heat. Ph. 885-5774.

4 Bedroom House In Merriweather. Reasonably Priced. Phone 575-3352.

When You Say
That You Agree
To A Thing
In Principle,
You Really Mean
That You Have Not
The Slightest Intention
Of Carrying It Out



Nonesuch News is Distributed throughout Ontonagon County each Wednesday free of charge.

Deadlines for News Items And Advertising is 5 p.m. Monday, preceding publication.

Phone 885-5557 week days and 885-5168 on evenings or weekends.

WHY NOT TELL THE
NONESUCH
"ALL ABOUT IT"

SEND US YOUR
COMPLAINTS
(Or If You're So Lucky)
YOUR
SATISFACTIONS

WE DON'T PROMISE
SOLUTIONS
BUT, IT'S A KNOWN
FACT - THAT
MISERY LOVES
COMPANY - AND

WE CAN PROMISE
YOU THAT!

Summer Clearance Sale still going on at Jan's Fabric Shop - Bruce Crossing.

For Sale By Bid - '66 Chev SW Ambulance, May be seen at County Sheriff's Dept. Send written bid to: Ontonagon County Clerk, 601 Trap St., Ontonagon, Mi. 49953. Mark envelope "Ambulance Bid". Bids will be accepted until 4:00 p.m. August 17, 1976. The County reserves the right to accept or reject any or all bids.

For sale - A .270 Ruger w/ 2x7 Redfield Scope, (\$250) and a dbl-barrel 12 gauge 3" mag. Zabala shotgun (\$125) Call 885-5589 after 4 p.m.

Wanted - Babysitting, Yard Work, Car Wash/Wax Or Odd Jobs. Reasonable rates, Responsible Worker. Phone 885-5168 & ask for Pete.

BECAUSE OF THE MANY ACTS OF VANDALISM TO OUR PREMISES - WE WILL BE FORCED TO ESTABLISH AND CARRY OUT A POLICY OF "NO ADMITTANCE" TO ANY ONE UNDER THE AGE OF 18 YEARS WHO IS NOT ACCOMPANIED BY AN ADULT IF ANY FURTHER VANDALISM SHOULD OCCUR.

The Konteka Management

LET'S GO BOWLING



Strike It Lucky! Discover What Fun It Is to Bowl!

NEW "HAPPENINGS" THIS SEASON AT THE KONTEKA
****"Coffee Klatch League" - Every Monday Morning At 10 A.M. A Special "Happening" For The Ladies! Coffee & Do-Nuts Served. Come In And Register Now At The Konteka As An Individual Or A Team!!
****"Junior League" - Each Tuesday Afternoon At 4:15 P.M. - A Special League For High School Students - Just 50¢ Per Game - Year-End Trophies Compliments Of The Konteka!!
****"All Persons Interested In The Great Sport of Bowling" - Stop In At The Konteka & We Will Help You Register For A League With The Right Time Slot For You. Leagues Are Re-organizing For The Start-Up Of The 1976 Fall Season Now!!

Enjoy yourself . . . it's easier than you think. Catch on to the sport of bowling! It's the perfect game for every member of the family.
lounge on premises.



Form Or Join A League!

KONTEKA LANES

WHITE PINE, MICHIGAN --- PHONE 885-5215

Why Buy Color Film?

QUICK PICS WILL REPLACE YOUR
COLOR PRINT FILM, PLUS
OFFER FAST, EXPERT PROCESSING.
QUICK PICS
MINERAL RIVER PLAZA

WHITE PINE, MI. 885-5804
STORE HOURS Mon-Thurs: 10-5
Friday: 10-6 Saturday: 10:30-4:30

McKEVITT-KERSHNER-PATRICK CO.

COMPLETE HOME FURNISHINGS
FURNITURE • 212-14 SUFFOLK
CARPETING • IRONWOOD
APPLIANCES • 932-1130