

THIRD CLASS POSTAGE PAID  
WHITE PINE, MICHIGAN 49971

Published  
&  
Edited  
By

R.W. POWELL  
G.B. POWELL

Published  
Every  
Wednesday



# Nonesuch News

WHITE PINE, MICHIGAN 49971

VOL IV NO 24 - WEDNESDAY, JUNE 16, 1976

## ONTONAGON PLANS BICENTENNIAL CELEBRATION - JULY 2, 3 AND 4

The plans for the Bicentennial observance at Ontonagon have been completed and the various committees are wrapping up the last details for an old fashioned community celebration involving the family as a whole.

On July 2 from 11:00 a.m. until 7:00 p.m. there will be a Graphic Arts show at the Ontonagon Township Library in the Memorial Building which will be sponsored by the Ontonagon Township Library in conjunction with the Mid-Peninsula Library Federation. A Library Open House will be held in conjunction with this event.

Also on July 2 the Miss Ontonagon County Bicentennial Queen Pageant will be staged at the Ontonagon Area High School Cafeterium at 8:00 p.m. The Pageant is under the direction of the Queen Sorority and will feature special entertainment by a former Queen, Mrs. Debra Kangas Vezetti, 1970, as well as another talented former Ontonagonite and Queen, Mrs. Julie Reynolds Carroll, 1971. Mr. David Kalivoda will also present some numbers. The Mistress of Ceremonies will be Mrs. Karen Saari Lahti, who was Miss Ontonagon County of 1961. The contestants are from the Ontonagon, Mass, White Pine areas, and will display their talents and poise in competition. The evening promises first-class entertainment, and will be presented at the nominal charge of \$1.00 per person.

On July 3, at 10:00 a.m. there will be a dedication service at the new James K. Paul Bicentennial Park on the corner of East River and N. Steel Streets, with Lou Gregory as the Master of Ceremonies, and Dr. Roland Strolle, a former Ontonagonite as the guest speaker. The honored guest who will unveil the plaque at the park will be Mrs. Marian Paul Ericson, the granddaughter of James and Amanda Paul, the founders of the village of Ontonagon. Mrs. Erickson will travel to Ontonagon for the occasion from Olney Springs, Colorado and will be the house guest of Mrs. Michael Scovia while in Ontonagon.

Another feature of the Park dedication will be an exhibition of Folk Dancing by the students of Miss Dorothy Phillips who were in the third grade during the past school year.

Following the dedication there will be a pot luck lunch at the Park. Every family is asked to bring a covered dish and the Bicentennial Committee will furnish refreshments and utensils. There will be a time for socializing, as the out-of-town visitors will have a chance to introduce themselves prior to the lunch so that old friends can search them out and renew acquaintances.

In the afternoon on Saturday at 2 p.m. in the vicinity of the Highway Bridge the Historical Society will present a pageant, "The Saga of the Copper Boulder." The pageant will be narrated by Judge Munro, and characters will include Chief Konteka, Julius Eldred, his sons Samuel Ashman, James K. Paul, Nick Miniclear, General Walter Cunningham, and Indian paddlers. There will be a recreation of the Indian Village on the shore, and the history of the transporting of the Boulder down the River will be brought to life.

At 4:00 p.m. and again at 8:00 p.m. on Saturday the Ontonagon County Community Chorus will present the musical "I Love America." The chorus personnel include singers from the Ontonagon and White Pine areas, and they have been rehearsing for the last two months under the direction of James Joplin and Bruce Johanson. The High School stage band under the direction of Bruce Johanson will accompany the chorus, as well as Mrs. Doreen Parker at the piano. The music was written by John Peterson and Don Wyrzten, and is presented in three

parts: Our History, Our Tribute of Praise, and Our Prayer for America. Soloists will include Roger McDonald, Mary Tucker, Larry Reynolds, Marian Tallman, Arlene Kaurala, David Kalivoda, and Barbara Jones.

On Sunday, July 4, the Community will "Let Freedom Ring" at 12:00 noon, in conjunction with communities all over the nation, who will ring bells to proclaim the freedom of the land. At 2:00 p.m. there will be a parade on River Street. The parade is sponsored by the Veterans of Foreign Wars, Ontonagon Post, and they have invited all marching units, musical groups, as well as floats done by individuals or organizations to enter the parade for an old fashioned family gathering. Costumed groups riding or walking will add to the procession. Following the parade there will be a dedication of the new Ontonagon Fire Hall, and drawings for cash prizes as well as a flag afghan. At 4 p.m. the center of attraction will return to the Ontonagon River where the Coast Guard Auxiliary Flotilla 28-13 of Ontonagon will sponsor a parade of boats on the Ontonagon River. Anyone who is interested in getting into that can contact Nestor Thompson or any member of the Flotilla. The boats can be decorated to make this a spectacular event.

Sunday evening will be a more solemn time when everyone is asked to gather at the James K Paul Bicentennial Park to observe a time of worship which will be sponsored by the Ontonagon County Clergy Conference and will reflect on the religious beginnings of our nation, and where we are headed in the next century. This will be at 8:00 p.m.

The celebration in Ontonagon will draw to a close at dusk on Sunday with a fireworks display set off by the Ontonagon Volunteer Firemen on the Island.

Everyone from the communities of the Upper Peninsula and friends and relatives from near and far are invited to participate in the celebration which will be a homecoming as well as a tribute to the 200th birthday of our nation.

## BUS TOUR PLANNED FOR SENIORS OF COUNTY TO HAYWARD AREA

June Lipinski, Director of Services to the Aging for Ontonagon County, announces a upcoming bus tour for Senior Citizens to Hayward, Wisconsin. The tour will take place on August 18 and 19.

The schedule for the trip is as follows: Wednesday - August 18th - The bus will leave Bruce Crossing Center at 8:00 a.m., the Bergland Center at 8:30 a.m. Lunch will be eaten at the Wannigan Pancake House at Hayward. At approximately 2 p.m. a combination tour of the Indian Village, Logging Camp, and a 2-hour boat tour will take place. Supper will be served at the Logging Camp Cook Shanty in Hayward. On Thursday - August 19th - Breakfast at the Wannigan Pancake House, followed by a tour of the Hayward Shopping area. After lunch the bus will leave Hayward at approximately 1:30 CDST for home.

The round trip fare of \$25.50 will include the bus fare, a room for 1 night (double beds, double occupancy only), and the combination tour in Hayward. Meals are to be provided for on your own. The bus will not make unscheduled stops and participants in the tour must remain together and eat together.

In case of emergencies, which cause an overnight stay, the passenger must make his or her own arrangements to get back home as the Bus Tour must continue.

To make reservations for the Tour, call any of the following centers: Bergland, 575-3461; Bruce Crossing, 827-3778; Ontonagon, 884-9663. Reservations must be made by July 14th and the full fare paid by July 15th. Interested Seniors may also send reservations

with a check or money order to: June Lipinski, c/o Bus Tour, Lake Gogebic Sr. Citizen's Club, P.O. Box 361, Bergland, Michigan, 49910.

## STATE'S SHORELINE IS CONCERN OF AREA CITIZENS

The Associate Planner for the Western U.P. Planning and Development region, Dave Steward, told a recent civic meeting in the Copper Country that Michigan's shoreline management program under the DNR provides for widespread input from citizens who would like to nominate areas of "particular concern."

Steward said the aim of the program is to protect and preserve our basic coastal resources and also to meet our needs for beaches and parks; commercial and industrial development; home and cottage sites; tourism; and other uses.

Steward identified fourteen types of areas of particular concern, ranging from ecologically sensitive areas and sand dune areas to flood-and-erosion-hazard areas and mineral resource areas.

When questioned about artificially high water levels on the Great Lakes - Superior in particular - Steward pointed out that such levels are not only destructive to property, but tend to prevent natural rebuilding of sand dunes, to produce excessive water turbidity, and to destroy wildlife habitat. It is often a push and pull situation, he said, with down-water areas aligned against upwater ones, and with power companies, for example, aligned against property owners.

## WHITE PINE WATER SITUATION

There is a possibility that overuse of the White Pine drinking water supply may create a shortage. It was demonstrated last summer that reasonable water usage can keep everyone supplied within the capabilities of the system.

We are asking residents of White Pine to help in two practical ways during July and August:

1. Limit lawn and garden watering to every other day. Using your house number, even-numbered houses may water on even-numbered days of the month, and odd-numbered houses on the odd-numbered days.

2. Confine lawn sprinkling to the 7:00 p.m. to midnight period. Horticulturists indicate that watering in mid-day heat is not only less productive than during evening hours but can actually damage vegetation. In addition, the maximum load on the water system is in the mid-day period.

If these two suggestions are followed by everyone, there should be an ample water supply this summer.

Thank you for your cooperation.

White Pine Copper Company

## DETERMINING ALLOWABLE ADDITIVES IN FOOD JOB OF FDA

How does the Food and Drug Administration (FDA) measure the amount of food additives allowed in foods? The FDA laboratories can measure these in amounts so small that they are commonly expressed in parts per million (PPM) and sometimes parts per trillion.

Consider iodized salt. Less than 1/5 ounce of potassium iodide is added to each 100 lbs. of table salt. Or consider: 4ppm equals one-eighth of one ounce of each ton of food. Parts per trillion? If an olympic-size swimming pool were filled with iced tea and one grain of sugar stirred in, you might have one part per trillion!

2022.15.23





#### FAITH LUTHERAN HOLDS CONFIRMATION

Fourteen 10th and 11th graders were confirmed at Faith Lutheran Church, White Pine, in services held recently. The class completed the extended LCA confirmation ministry program which begins with early communion in fifth grade and extends through twelfth grade, with students being given the opportunity to be confirmed at the end of tenth grade. Some choose

to be confirmed later.

The class of '76 consisted of: (Back Left) Joelyn Lenatz, Sheila Keto, Bob Talvensaar, Chris Maksym, Craig Kinnunen, Marvin Moilanen, Larry Niemi, Sheryne Moilanen, (Front Left) Jim Erickson, Gregg Burgess, Peter Hendrickson, Pastor Eilertson, Doris Moilanen, John Tiberg, Denise Moilanen.

### Letters TO THE EDITOR

To The Editor  
Nonesuch News  
White Pine, Michigan

In reply to Joan Hill's letter, I too think something should be done to these insects so we can enjoy our beautiful country. We spent a wonderful three weeks in our western states last spring and the most wonderful part of the trip was that we didn't have to fight any of those miserable little bugs. Here is a poem I wrote after camping three days at Gogebic State Park a few years ago. It explains very well how a lot of us feel.

Thank You.

s/Madilene Lundwall  
Rt. 1, Box 53  
Ewen, Michigan

#### CAMPING

A camping trip's a delightful thing - For the kids and a man and his wife,  
But when the bugs fight for your blood it can be a terrible strife.

It's nice to get up at the break of day to see the beautiful sun,  
But as soon as the tent zipper makes a sound, the bugs are on the run.

The no-see-ums are the tiniest ones, so, of course, they're the first to be fed.  
A nip here and a nip there - from our toes right up to our head.

Then the mosquito steps in and says it's my turn and the little ones all disappear.  
Now with the mosquito, when he moves in at least a warning you hear.

As the day wears on they all take turns. There are new kinds every year.  
The no-see-um, the sand fly, the deer fly. Oh dear, oh dear, oh dear!

The fish fly, the horse fly, the green fly - are there, all awaiting their turn.  
By now we are all scratching and our hides really starting to burn.

The ranger says, "Oh no, we can't spray. There's just too much confusion."

Then in our parks - they better start - to serve  
INSTANT BLOOD TRANSFUSION!  
(Written after camping at Gogebic State Park in 1965.)

#### THANK YOU

We would like to express our most heartfelt thanks to all our friends and neighbors for their many acts of kindness shown us following the tragic death of our wife and mother ---  
JENNIE ANDERSON

We want to give special thanks to Pastor Eilertson for being with us and for his words of comfort during this time.

May God bless each and every one of you. Your kindness will always be remembered.

Jim Anderson & Daughter Rachel  
Mr. & Mrs. Kenneth Anderson  
& Family

#### COME ALIVE SINGERS SET CONCERT

The Come Alive singers, formerly Sacred Heart Singers, will hold a concert at the Ewen-Trout Creek High School Gym on June 23, 1976 at 7:30 p.m.

The proceeds are to be used for seeding and sodding of the football field. This is sponsored by the ETC football team. Price of admission is Adults - \$1.00, and Students, 50¢.

#### THANK YOU

Thank you to all the friends, relatives, and neighbors that have helped us out during this difficult time. Also, thank you for the many cards, gifts and letters.

The Bruce & Pat Korkko Family

#### WHERE'S THE MUSIC COMING FROM?

If you hear music coming from the center of White Pine on a warm summer evening and you're wondering where it's coming from, it's a new group rehearsing --- and they're called the Coppertones!

A well-known guitarist from Ontonagon, Bud Richmond, had an occasion to hear Larry Jaker's fantastic high school stage band this spring and was doubly impressed, not only by the quality of music these young musicians produced, but also by a hot young drummer - Mike Calhoun - and a steady bass guitar player - Mike Gravier.

Bud approached the two boys and asked if they would care to play back up to his guitar. After a few rehearsals, this group can give a crowd anything they want from Rock to the popular music from the twenties, forties and fifties. Even an Irish jig upon request.

The amazing thing about this group is that Bud is old enough to be a grandfather to these young men. Their music spans three generations and they click beautifully. Bud is retired and is having a ball working with the boys and they, in turn, are gaining a valuable learning experience.

Their first public appearance will be at the celebration on the 5th of July in White Pine in the village square. Watch for them!

#### THE PRIVATE LINE

**Annoyance Calls:** Malicious, threatening, harassing, or abusive calls and obscene or profane language, are prohibited by state and federal laws. Making such calls may constitute cause for disconnecting service and possible criminal prosecution, and civil action by the person called. This would apply to the person who has been calling in false fire alarms lately, or his parents.

The telephone company is particularly concerned about obscene and harassing calls and will help stop them. Don't talk or listen to such calls - just hang up. If calls persist call the telephone company.

**Guarding against fraud:** For your protection, new equipment and procedures enable the telephone company to detect and investigate fraudulent calls. State law provides that no person shall defraud or attempt to defraud the telephone company of its lawful charges. Violators, upon conviction, are subject to imprisonment for up to one year or to a fine of up to \$500, or both.

#### ONTONAGON COUNTY TELEPHONE COMPANY

#### TO WHOM IT MAY CONCERN

Would the person or persons who took the top two layers of wedding cake from the Binkley - Gentiline reception at Paul's Bar Saturday evening, please be good enough to return the top decoration and plastic insert which was between the layers.

The decoration was to have been a keepsake for the bride and groom and the insert belongs to the party who made the cake. No questions will be asked.

Mr. & Mrs. Gentiline  
Mr. & Mrs. Binkley

#### BERGLAND-EWEN SUMMER PROGRAM BEGINS THIS WEEK

The Summer Recreation Program for young people in the Bergland and Ewen-Trout Creek Community School District begins this week and for the first time the program will consist of all volunteer help and will be free to the children of the Ewen Trout Creek and Bergland areas.

Dan Ojala, community school director, indicated that offerings in the summer program include: Girls Little League, tennis instruction from beginning through more advanced stages, golf instruction at Bruce Crossing, Day Camp, Tot Lot for pre-schoolers and younger elementary children, basketball and other gym related activities. Ojala said that swimming instruction will begin July 13 with outdoor education including overnight camping slated for July and August.

The program will be free for all because the community schools have been able to mobilize the volunteers of the community to help. Ojala said that those families who have not already signed up should contact him. Adults who will assist as volunteers should also call Ojala, who adds that the program can be highly successful if all parts of the communities pull together.

Imagery  
by

WEDDINGS  
PORTRAITS  
COMMERCIAL

BRENT THORGREN

PHOTOGRAPHS

FOR ALL

OCCASIONS



Box 331

827-3364

BRUCE CROSSING, MICHIGAN 49912



# SURPRISE DAD

Father's Day JUNE 20

READY SET CELEBRATE

We'll Serve A  
Meal Fit for a King!



B\*R\*E\*A\*K\*F\*A\*S\*T B\*U\*F\*F\*E\*T  
Serving From 9 To 12

Homemade Doughnuts, Pecan Rolls, Juices, Fruit Cups, Toast, Hash Browns, French Toast, Strawberry Crepes, Scrambled Eggs, Bacon, Sausage, Finnish Krupsas, Creamed Turkey On Homemade Biscuits, Beverages

S\*P\*E\*C\*I\*A\*L\*S F\*R\*O\*M 1P\*M\* T\*O\* 9:30P\*M\*

Swiss Steak, Fresh Lake Trout, Complete Salad Bar, Beverage, Dessert

## KONTEKA

WHITE PINE

MARGE RAZMUS - PROPRIETRESS

885-5215



MRS. FLOYD GENTILINE

### BINKLEY-GENTILINE NUPTIALS HELD ON SATURDAY

Miss Mona Binkley, daughter of Mr. & Mrs. Alan Binkley and Floyd Gentiline, son of Mr. & Mrs. Gale Gentiline, were united in marriage June 12, 1976.

Nestor J. Thompson, Judge of Probate, officiated at the 5:30 p.m. double ring ceremony. The wedding took place in the garden at the home of the bride's parents in Silver City. The bride was given in marriage by her father. Her dress was of a soft, polyester white knit. Lacy self-cording lined with marquisette fashioned the diamond-shaped inset, highlighting the draped front floor-length dress. The circular cover-up was of misty polyester sheer. Her large white garden hat was of lacy straw trimmed with pink satin ribbon. She carried a cascading bouquet of white bridal wreath and large American Beauty and miniature pink roses.

Maid of honor was Miss Dawn Gentiline. She wore a beige dress with long, see-through sleeves. The long skirt ended in a deep flounce. Lace ruffling accented the voile dress. She also wore a large pink garden hat trimmed with pink satin ribbon.

Best man was Anthony Meneguzzo Jr., of White Pine.

A reception was held at Paul's Supper Club in Silver City.

The bride and groom are both graduates

of White Pine High School. The bride is a 1976 graduate of Gogebic Community College, School of Cosmetology. The groom is a student at Gogebic Community College.

The young couple will reside in White Pine. Out-of-town guests were from Florence, Wis., Iron Mountain, White Pine, Bergland and Ontonagon, Michigan, and Hudson Bay, Saskatchewan, Canada.

Time is too slow for those who wait, too swift for those who fear, too long for those who grieve, too short for those who rejoice; but for those who love... time is eternity!



... A meeting of the WHITE PINE BI-CENTENNIAL COMMITTEE will be held at 7:30 this evening, June 16th, at the Konteka.

### ADVICE FOR PROSPECTIVE CANNERS

Don't gamble with your family's safety when canning foods. Take sanitary precautions, use the right equipment, and follow directions in the most recent USDA bulletins, says Dr. C. Bedford, food scientist at Michigan State University.

Sanitation is an important element in canning that is often overlooked, Bedford notes. Be sure to wash the product thoroughly before the processing. Using a solution of chlorine bleach in water (1/4 teaspoon per gallon), sanitize kitchen utensils, hands and all counter and stove tops in the working area. If possible, run equipment through a dishwasher just before use and avoid reusing dish towels which are a prime source of contamination.

"Proper sanitation leads to safer processing," Bedford says. "If fewer organisms get into the product in the first place, there are fewer to be destroyed by processing."

It is important to use the right equipment to prevent underprocessing, which will let dangerous microorganisms survive. A pressure canner must be used for low-acid products, which include meats, fish and vegetables. Fruits and tomatoes can be safely processed in a water-bath canner.

Follow directions in the most recent canning bulletins for processing. Avoid shortcuts and experiments. Canning methods are changing with time and other methods are no longer safe with today's cooking practices. The bulletin,

"Home Canning of Fruits and Vegetables," can be obtained at MSU Bulletin Office, P.O. Box 231, East Lansing, Mi. 48824.

For canning, choose top quality produce with no bruises or soft spots. Avoid overripe foods. Process as soon as possible after harvesting. Quality deteriorates rapidly, and food may quickly become unsafe for canning.

Use standard home canning jars and lids to prevent jar breakage and food spoilage from poorly-fitting lids. Canning lids should be used only once. Reusing lids for home canning is risky, because the lids may not hold a seal. Check jars carefully for chips and cracks. Discard cracked or chipped jars.

Be sure not to overfill canning jars. Over-filled jars may burst from expansion, and in addition the foods are usually underprocessed and may spoil. Follow time and temperature directions carefully, and test the seal according to instructions.

Be sure to boil any home-canned vegetables for at least 10 minutes before tasting. If any canned foods do look suspicious—with bulging lids, leaks, off-odors, off-colors or mold—don't taste them. Destroy them immediately, and keep the food out of reach of children and animals.

### ONTONAGON COUNTY CHURCHES

Church of the Ascension - Morning prayer and sermon at 9 a.m. Rev. John Lusth, vicar.

Assembly of God - Sunday school at 9:45 a.m. Morning worship service at 11. Sunday evening service at 7 p.m. Rev. F. E. Sarbo, pastor.

St. Ann Roman Catholic (Bergland) - Sunday Mass at 11 a.m.

St. Jude Roman Catholic (White Pine) - Masses at 6 on Saturday, Sunday at 8 and 9:30.

St. Mark's Episcopal - Morning prayer and sermon at 11 a.m. Rev. John Lusth, vicar.

Siloa Lutheran - (Ontonagon) Communion at 9. Sunday school at 10:15. Rev. John Eilertson, pastor.

Holy Family Catholic - (Ontonagon) Masses - Saturday at 5:30 p.m. Sundays at 8 & 10 a.m.

St. Paul Lutheran - (Ontonagon) Worship at 9.

Faith Lutheran (White Pine) - Sunday school at 9:15. The Service at 11. Rev. John Eilertson, Pastor.

Ontonagon Baptist - Sunday school at 9:45. Morning worship at 11. Evening service at 6. Prayer service at 7 p.m. Wednesday.

Redeemer Free Lutheran - Morning Worship at 9 a.m. Sunday school and confirmation at 10:15 a.m.

St. Paul's Evangelical Lutheran - Saturday, 7 p.m. Services in Wainola; Sunday, 9 a.m. - Services in Mass; Sunday, 10:30 a.m., services in Winona.

(Ed's Note - This is not a complete listing of all county churches. We will be happy to print the regular schedule for your church as well as special events or schedule changes. Send to None-such, Box 51, White Pine.)

### NOTICE

The Bergland Township Board has agreed to permit the residents of Matchwood Township to use the Bergland Township Landfill for their garbage.

The Landfill is open every day until further notice.

MATCHWOOD TOWNSHIP BOARD  
Sylvia Jezuit, Clerk

A big silver dollar and a little bronze cent rolling along together went rolling along on the smooth sidewalk.

"You poor little cent, you cheap little mite. I am bigger than you, and twice as bright. I'm worth more too, a hundred fold. And written on me in letter bold is the motto drawn from pious creed, 'In God we trust', which all can read."

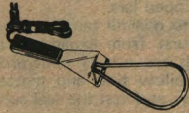
"Yes, I know," said the cent. "I'm a cheap little mite and I know I'm not big or good or bright... and yet," said the Cent with a sweet little sigh, "You don't go to church as often as I.



# PRE - SUMMER SAVINGS

LOU'S SUPERIOR PHARMACY

# BOYANZA



ELECTRIC CHARCOAL LIGHTER

--\$2.99--  
(\$6.00 Value)



INSULATED PLASTIC COOLER

--\$1.99--  
(\$4.00 Value)

1/2 Gallon Capacity



MEDIUM SIZE / \$1.49 (\$2.00 Value)

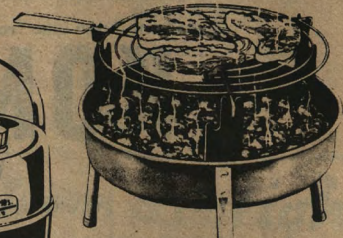
LARGE SIZE / \$1.99 (\$3.00 Value)



STEEL THERMOS

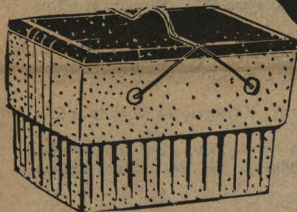
1 Gallon Capacity

--\$3.99--  
(\$9.00 Value)



12 INCH TABLE GRILL

--\$2.00--  
(\$4.00 Value)



STYROFOAM COOLER

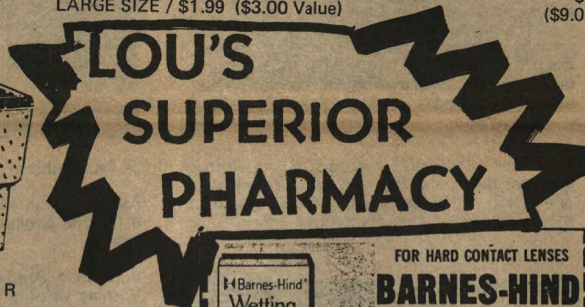
48 Quart Capacity

--\$3.99--  
(\$6.00 Value)

STYROFOAM COOLER

27 Quart Capacity

--\$1.49--  
(\$3.00 Value)



FOR HARD CONTACT LENSES

**BARNES-HIND Wetting Solution**

2 OZ. SIZE  
2.48 VALUE

**139**

Limit 2 Per Adult With This Coupon

Coupons Expire 6/22/76



Johnson & Johnson  
**COMPACT FIRST AID KIT**

GREAT FOR CAMPING, PICNICS, OR HOME USE.

3.95 VALUE

**199**



## ASSORTED COOKIES

- DELUXE ASSORTMENT - YOUR CHOICE
- VANILLA SANDWICH CREMES, 7 -oz.
  - CHOCOLATE SANDWICH CREMES, 7 -oz.
  - DUPLEX SANDWICH CREMES, 7 -oz.
  - OLD FASHIONED CHOCOLATE CHIPS, 6 -oz.

Your Choice  
49¢ VALUE **29¢**

Limit 2 Pkgs Per Adult With This Coupon.  
Coupon Expires 6/22/76

1/2 GALLON ORANGE JUICE... 59¢

DOZEN GRADE A LARGE EGGS... 59¢

RIVER ST. — ONTONAGON



## PARADISE BRAND "PURE" STRAWBERRY PRESERVES

2 LB. JAR • 1.47 VALUE

**99¢**

Coupon Expires 6/22/76

Limit 2 Jars Per Adult With This Coupon





Mon.-Fri.  
9 to 9  
Sat. 9 to 6  
Sun. -Ont. 9-6  
White Pine 10-3

**RED OWL**  
THE FRIENDLY FOOD STORE

**ONTONAGON**

422 RIVER STREET



**RED OWL**

**WHITE PINE**

MINERAL RIVER PLAZA



FULL CUT U.S.D.A. CHOICE BEEF  
RED OWL TENDR CARE

**ROUND STEAK**



**\$1.19**  
LB.

FORMERLY FAMILY STEAK

**BONELESS BOTTOM ROUND STEAK** .....  
USDA CHOICE LB.

**\$1.39**

CUT FROM THE CHUCK

**BONELESS BEEF ROAST** .....  
USDA CHOICE LB.

**99¢**

ADOLPH' MEAT MARINADE 4/5 OZ. PKG. .... EA. 29¢

**FRESHWATER FISH VALUES!**

FRESHWATER **NORTHERN PIKE FILLETS** 1/4 OZ. **\$1.29**

FRESHWATER **Lake Trout** 1/4 OZ. **\$1.69** | FRESHWATER **Whitefish** 1/4 OZ. **\$1.79**

RED OWL **CANNED HAMS**.....

3 LB. TIN **\$4.99** | 5 LB. TIN **\$7.99**

SICED REG. GARLIC & BEEF **OSCAR MAYER Bologna** 8 OZ. PKG. **79¢**

**FOR PICNICS, PATIOS OR PARTYING!**

HOME MADE BRATWURST - EXCELLENT FOR THE GRILL!! FOOT LONG HOT DOGS & BUNS!! HEINEMANN'S KITCHEN BULK POTATO SALAD & COLE SLAW!! ALSO--- CHARCOAL, LAWN CHAIRS, SUNTAN LOTIONS, ETC.!! - AT RED OWL WE HAVE ALL THE FIXINS FOR YOUR PICNICING PLEASURE!!!

**REBEL COUPON**

**Heinz Jr. Baby Food**

**6** 7 3/4 OZ. JARS **\$1**

Limit 6 jars with coupon. Valid thru Sat. June 19, 1976 (CXX1925) Corp. Red Owl 205

**REBEL COUPON**

CHOICE OF GRINDS FOLGER'S **COFFEE**

**2** 2 LB. CAN **\$2.99**

Limit one can with coupon. Limit one coupon per customer. Valid thru Saturday, June 19, 1976 (CXX1945) Franch. Red Owl

**REBEL COUPON**

\$100,000. CRUNCH. MILK CHOCOLATE OR CHOCO-LITE **NESTLE'S CANDY BARS**

**1** 10 1/2 & 11 1/4 OZ. PKGS. **\$1.09**

Limit one pkg with coupon. Valid thru Sat. June 19, 1976 (AXX1976) Corp. Red Owl 202

**PRICE REBEL ZINGER**

**vegetable margarine**

VEGETABLE, QUARTERED

**Margarine**

**19¢**

1-LB CTN. **\$5.00**

WITH COUPON BELOW & SEPARATE PURCHASE

Limit - 6 Lbs. Please!

**REBEL COUPON**

REGULAR OR WITH RAISINS **C.W. POST CEREAL**

**15** OZ. BOX **79¢**

Limit one box with coupon. Limit one coupon per customer. Valid thru Saturday, June 19, 1976 (CXX1910) Franch. Red Owl

**REBEL COUPON**

GROUND, BLACK **DURKEE PEPPER**

**1** 8 OZ. CAN **\$1.29**

Limit one can with coupon. Valid thru Sat., June 19, 1976 (AXX1976) Corp. Red Owl 206

**ZINGER COUPON**

VEGETABLE, QUARTERED **RED OWL MARGARINE**

**1** 1 LB. CTN. **19¢**

With coupon & separate \$5 purchase. Valid thru Sat. June 19, 1976 (AXX1976) Corp. Red Owl 201



**WHITE PINE**  
MINERAL RIVER PLAZA

**RED OWL**

**ONTONAGON**  
422 RIVER STREET

JOSEPH J. CRONAN & FLORIAN J. MOHAR  
-- OWNERS & OPERATORS --

**FATHER'S DAY SPECIALS**

**PRICE REBEL WISE BUY**

HARVEST QUEEN  
PURE **JUICES**  
GRAPEFRUIT, ORANGE or BLENDED

**59¢**

46 OZ CAN

**PRICE REBEL WISE BUY**

PIC'T RIPE  
**ELBERTA PEACHES**

**47¢**

29 OZ CAN

**PRICE REBEL WISE BUY**

VALDOR-FROZEN  
**CORN, PEAS**  
GREEN BEANS, PEAS & CARROTS, MIXED VEG.

**45¢**

20 OZ POLY BAG

**PRICE REBEL WISE BUY**

Charmin  
**CHARMIN TISSUE**

**74¢**

4 ROLL PACK

**PRICE REBEL WISE BUY**

KRAFT PLAIN or SMOKEY  
**BARBECUE SAUCE**

**49¢**

18 OZ. JAR

**SALAD DAYS ARE HERE**  
MIX OR MATCH SPECIAL  
**GREEN PEPPERS, EACH**  
**CUCUMBERS, EACH**  
**GREEN ONIONS, BUNCH**  
**GREEN TOP RADISHES**

**6 FOR \$1** GREAT SALAD FIXENS

**3 FOR \$1**

FRESH SALAD GREENS  
**VARIETY LETTUCE**

FOR THAT EXTRA FLAVOR  
Oscar Mayer Real Bacon Bits . . . . . **89¢**

MIRACLE FR. OR RUSSIAN  
Kraft Dressings . . . **49¢**

VEGETABLE  
Mixo Oil . . . . . **79¢**

CATHERINE CLARK'S  
CROUTONS . . . . . **59¢**

FAMOUS QUALITY  
Kraft Roka Dressing . . . **59¢**

BRANDALL WHITE  
Vinegar . . . . . **39¢**

GREEN GIANT WHOLE  
OR Sliced 3 1/2 OZ. JAR  
Mushrooms **3 FOR \$1**

EXCLUSIVE FROM THE PRICE REBEL. ALL OCCASION...

**THERM-O-WARE!**

DURABLE, INSULATED SERVING WARE  
FIRST WEEKS FEATURE

**9 OZ. CUP ONLY 37¢**

START YOUR SET TODAY

WEEKLY SCHEDULE	COMPLETER PRICES ON SALE EVERY WEEK
1 9 OZ. CUP 37¢	TUMBLER . . . . . 59¢
2 9 OZ. CUP 37¢	STEIN . . . . . 59¢
3 9 OZ. CUP 37¢	

**GREAT DAIRY SPECIALS FOR GREAT REBEL SAVINGS**

**Cheese Spectacular**

COLBY . . . . . Per Lb. **\$1.49**

MEDIUM CHEDDAR . . . . . **\$1.49**

MOZZARELLA . . . . . **\$1.49**

MONTEREY JACK . . . . . **\$1.49**

Per Lb. **\$1.49**

FAIRMONT  
**ICE CREAM . . . \$1.25**

RED OWL - INSTANT BREAKFAST  
Orange Drink Mix . . . . . **\$1.49**

PRICES EFFECTIVE THRU SATURDAY, JUNE 19  
1976. QUANTITY PRICINGS RESERVED; NO SALES TO DEALERS.

BALLARD, REFRIGERATED  
**Crescent Rolls . . . 3 \$1**

FROZEN, RHUBARB OR APPLE  
LLOYD J. HARRISS Fruit Pies . . . . . **79¢**

CALIFORNIA, SWEET, JUICY

**GREEN GRAPES . . . 59¢**

PREMIUM QUALITY

LARGE SIZE CALIFORNIA  
**APRICOTS . . . 49¢**

Pure Orange Juice . . . . . **79¢**

100% FLORIDA  
RED OWL FROZEN CONCENTRATE  
**Orange Juice 4 89¢**

CAMPBELL'S  
**Pork & Beans . . . . . 3 18 OZ CANS \$1**

GOLDEN GRAY  
**MACARONI & CHEESE DINNER . . . 4 1/2 OZ BOX \$1**

BEEF, ORIENTAL OR CHICKEN  
**Ramen Noodles . . . 3 3 OZ PKGS \$1**

RED OWL  
**KETCHUP 59¢**

26 OZ. BOTTLE

**BOUNCE** Fabric Softener **\$1.49**

13¢ OFF LABEL

BOX OF 40 SHEETS

**WISK** LIQUID DETERGENT **\$2.09**

21¢ OFF LABEL

1/2 GAL.

**LUX** LIQUID DETERGENT **89¢**

20¢ OFF LABEL

32 OZ. BTL.

EARTH BORN SHAMPOO **\$1.18**

STRAWBERRY, GREEN APPLE, APRICOT OR AVOCADO

8 OZ. BTL.

**BAYER** NON ASPIRIN PAIN RELIEVER **\$1.28**

BOTTLE OF 100

"WINNERS" OF SLEEPING BAGS FROM OUR "KID'S WEEK" DRAWING ARE:  
White Pine - Tanya Richards & John Butina; Ontonagon - Susan Clark & Shannon Pender. Congratulations Kids!!!!

FACIAL TISSUE  
Posh Puffs . . . . . **43¢**

SALSAUSE & PEPPERONI  
Finnazio Pizza FROZEN . . . . . **\$1.29**

30 OZ. SIZE

FROZEN  
Ore-Ida Tater Tots . . . . . **39¢**

15 OZ. PKG.

HARVEST QUEEN  
Instant Tea . . . . . **\$1.29**

3 OZ. JAR

CHICKEN, LIVER OR REGULAR  
Vets Dog Food . . . . . **6 15 OZ CANS \$1**



# ESPECIALLY FOR DAD GIFTS HE WILL LOVE!

We're your local hardware merchant with national chain buying power. We buy together for less.

**True Value**  
HARDWARE STORE



**11-Pc. 3/8" Socket Set** **15<sup>75</sup>**  
Has 7 sockets: 3/8" to 3/4"; plus spark plug socket, ratchet, extension, case. T38118



**Black & Decker**

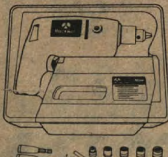


**Variable Speed JIG SAW**

Choose the speed to suit the job—0 to 3200 rpm. Tilting shoe for bevel, compound and mitre cuts. 1/3 max. hp. 7580

**24<sup>88</sup>**

**Rockwell**



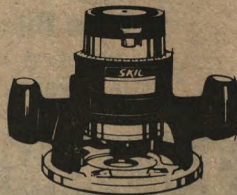
**Variable Speed Drill Kit** **24<sup>97</sup>**

Double-insulated 2.7 amp motor runs 0-1000 rpm. Accessories, case. TV38186

*Give projects the professional touch*

**SKIL router**

**29<sup>99</sup>**



Can plane edges, cut multi-curved moldings, produce relief panels, rabbet and dovetail joints, etc. 1/2-hp motor is burnout protected. 548

**Father's Day Special!**

**FREE Arkansas Sharpening Stone with the purchase of any KA-BAR® pocketknife.**

{While supply lasts}



Give Dad a lifetime gift. A handcrafted KA-BAR Pocketknife. We'll include a genuine Arkansas Sharpening Stone with carrying case (a \$1.99 value), plus a "How to Sharpen Knives" pamphlet.

**"Eleven years ago Michael got leukemia. Last spring we got married."**

Mrs. Ann Finamore

"When Michael got leukemia eleven years ago, his thirteenth birthday was supposed to be his last. And here we are celebrating our first anniversary.

"Because just about the time Michael got leukemia, the cancer research people came up with a powerful new treatment. A combination of drugs that kill cancer cells. So Michael is alive. You should see how alive!

"There's a lot more research to be done and a lot more people to be saved. So give to the American Cancer Society. We want to wipe out cancer in your lifetime."



**American Cancer Society**  
This space contributed by the publisher

## GIOVANONI HARDWARE

White Pine 885-5141

Hurley 561-4141

### OUTDOOR REPORT: J. Magnuson, MDNR

The effects of the Memorial Day weekend rainfall have disappeared and the parched look of nearly-dried grass in open fields is coming back. The bright, new green in the hardwood forests is still fresh-looking, however, because it has been a matter of a few days since the leaves have fully opened. The heavy canopy of leaves has held the evaporation of ground moisture to a minimum in this part of our dry spell, but we still need quite a bit of rain soon to bring things back to normal. All streams are very low and water temperatures are up. Brook trout fishermen have given up on any action until stream conditions improve considerably. Although this current dry spell has hurt the ground level vegetation somewhat, we haven't had any serious problem as yet with wildfires. The winds during this period of hot, dry weather have been generally light to moderate and this is the most important factor in our fire danger rating calculations; the stronger the winds, the higher the danger rating. Anyone using the woods for recreation or work, however, should consider the conditions as being dangerous so as not to become careless with fire, burning tobacco, or other causes of wildfires.

Although fishing activity on the inland streams is practically nil, the inland lakes are producing quite a bit of action and success and there are good numbers of fishermen out most days. Both activity and success should be better in the coming weeks when the tourists and summer residents return to the district in normal summer numbers. It is my opinion that well over half of the fish taken in the inland lakes of this district are by people who are not year-round residents of the area. Most local fishermen are trout-orientated and don't like to fish for anything else. Most of the lakes are in the south part of Gogebic

County along the Wisconsin-Michigan border and all are usually good year-round for the warm water species of fish found in the lakes.

Fishing activity and success also improved on Lake Superior this past week. In the east part of the district, a good number of limit catches were noted. Jack Pettyjohn, of L'Anse and his partner, Pete Morin of Baraga, were out on Huron Bay Sunday morning and were back to shore by 11:30 a.m. with 10 lake trout ranging from 20 to 29 inches in length. Andy Gauthier, of L'Anse, picked up a 13 and 3/4 pound lake trout last Saturday. I checked his fish myself, but there was an unconfirmed report of another lake trout over 16 pounds also taken on Sunday. Several other fishermen located a school of coho salmon just south of Pequaming on the east side of Keweenaw Bay and another school on the west side out from Assinins. No catch figures were mentioned for either of these two areas, but there were enough fishermen over both to indicate the success was better than just fair.

The fishing on Lake Superior in the west end of the district was said to be fair for lake trout, but excellent for rainbow trout and coho salmon. Trolling various lures and baits in the upper 10 to 20 feet of water over depths of 200 to 250 feet produced many limit catches. Most of this action was found out of Black River Harbor in Gogebic County. The light winds of the past week enabled quite a bit more fishing time than had been in earlier weeks.

The sales of one-day fishing licenses has been quite surprising in parts of this area lately. Evidently local residents are getting visitors who wish to do some fishing, but do not have time for enough fishing to warrant a full-season license.

Two sightings of wolves were made in the past week. The first was of a single wolf

on M-28 near Bergland in Gogebic County. The other was of a pair of wolves in the Paynesville area of Ontonagon County.

### ONTONAGON VALLEY LITTLE LEAGUE RESULTS FOR WEEK

In a game played on June 8th at Bruce Crossing, Bruce's had scored to go ahead of Trout Creek in the top of the 5th inning when the game was called because of rain. Little League rules state the final score is from the last full inning played, thus Trout Creek won the game - 12 to 9.

At Bergland in an exciting extra inning ball game it was Bergland 7 - Ewen 6. With two men out in the bottom of the 6th, Bergland scored the tying run and won the game in one extra inning.

On June 11th a game was played in Bruce Crossing with Ewen defeating Bergland by a score of 11 to 10.

On the 12th Trout Creek met Bruce Crossing and was victorious by a score of 9 to 8. Derrick Stenson had a grand slam for Trout Creek.

### Why Buy Color Film?

QUICK PICS WILL REPLACE YOUR  
COLOR PRINT FILM, PLUS  
OFFER FAST, EXPERT PROCESSING.

**QUICK PICS**  
MINERAL RIVER PLAZA

WHITE PINE, MI. 885-5804  
STORE HOURS Mon—Thurs: 10-5  
Friday: 10-6 Saturday: 10:30-4:30



**SALE**  
**AT OLSON'S**  
**FURNITURE**  
**CONTINUES**

**CARPETS**  
**APPLIANCES**  
**FURNITURE**

**OLSON**  
**FURNITURE**  
**-ONTONAGON-**

**HOT**  
**WEATHER**  
**FANS**

**ONTONAGON COUNTY CANCER CRUSADE**  
**TOPS \$5,300!**

From: Clarice Strong, County Chairman  
 I remember last year when we surpassed our Crusade Goal how excited and very grateful I felt, and somewhat relieved that the work was done for another year. This year, however, I am really at a loss for words at how I really feel. I started working and organizing the Crusade in February and after months of hard work, I can only say "THANK YOU." Thank you to my fellow Board Members, to the Nonesuch News, The Ontonagon Herald, Jan Tucker and WMPL, to the 29 Captains, 157 workers, and a very

special thank you to my Co-Chairwoman for the South end of our County, Joy Popke for doing an excellent job. The business places, the organizations, and all those who donated so very generously on the door-to-door canvassing are to be thanked and congratulated. You will never know how much all your efforts are appreciated by all of us connected with the Ontonagon County Cancer Society, American Cancer Society, and most especially by those who suffer because of cancer. God bless all of you and may He give us all a world free from cancer.

I am submitting a complete report of the Crusade. It is lengthy but I feel everyone who gave of their time deserves credit. Our Goal set from the State of Michigan was \$4,700 and the Grand Total we raised was \$5,300.92. \$600.92 over the goal. Thank you all!!

**BERGLAND TOWNSHIP** - Captain, Polly Mikkola; Workers - Mrs. Loren Sanford, Sharon Newhouse, Jean Perttu. Total - \$128.71.

**MATCHWOOD TOWNSHIP** - Captain - Mrs. Agnes Hokens; Workers - Chris Waurio, Agnes Hokens; Total - \$57.16.

**MCMILLAN TOWNSHIP** - Captain, Mrs. Dorothy Bessen; Workers Mr. Lauri Jaakola, Margaret Barnhardt, Rose Larson, Elsie Hoffstrom, Debbie Lindsey, Sandy Maki, Katherine Gull, Signe Kangas, Linda Nygard, Edith Trousil, Nancy Salisbury, Hilda Schlarb, Joy Johnson, Mary Kasten, Edna McGinty, Patty Worachek, Doris Humphrey. - Total - \$445.50.

**HAIGHT TOWNSHIP** - Captain, Mrs. Dee Ursitti, Worker - Mrs. Dee Ursitti. Total \$43.50.

**INTERIOR TOWNSHIP** - Captain - Mrs. Eleanor Bessen, Workers - Marguerite Cook, Kathleen Besonen, Ellen Miilu, Judy Miller, Marge Kariainen, Lee Ann Hiitola, Eleanor Bessen. Total - \$160.25.

**STANNARD TOWNSHIP** - Captains - Mayme Honkanen, Doris Lindberg, Irene Lanet; Workers - Janice Anderson, Betty Peltola, Marie Ahola, Alice Hill, Sigrid Bonetti, Alvina Juhola, Mabel Berger, Carol Niemi, Joan Nurk-kala, Karen Abramson, Miriam Teikari, Ellen Gerber, Bethyl Holmes, Andrew Linna. Total - \$473.24.

**ROCKLAND TOWNSHIP** - Captain - Mrs. Wilma Jenkins; Workers - Juanita Seid, Joyce Wadman, Hattie Paulsen, Loretta Wells, Linda Bussiere, Wilma Jenkins, Don Barkus. Total - \$217.85.

**SHOP**

**MINERAL RIVER**  
**PLAZA**

**EVENSON'S**

**FOR 100'S OF NEAT IDEAS FOR**  
**FATHER'S DAY**



SIZES 7 - 14

Sleeveless

**TANK,**  
**TOPS**

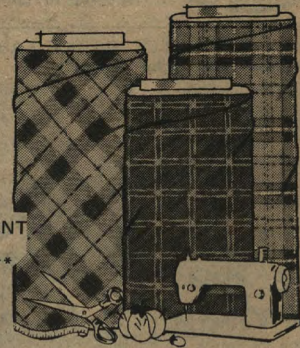
Were 2.98 Now **1.88**

Cool Duo

**LADIES COTTON**  
**SHORTS**

(Regularly \$2.98)

SIZES - S, M, L  
 AT \$2.44



"WHILE THEY LAST"

IN OUR YARD GOODS DEPARTMENT

\*\*ASSORTED PRINTS & SOLIDS\*\*

At Only 66¢ Per Yard

VALUES HERE TO \$1.29!!!

JUST ARRIVED!

45" TERRY CLOTH

WHITE PINE, MICHIGAN

\$2.44 A YARD

**DANCE**

**SAT-19<sup>TH</sup> 9:30 TO 1:30**



This Week Featuring

**VIGILANCE**

For A 'Real' Special Father's Day  
 Treat Dad  
 To A

SIRLOIN FOR TWO & THEN DANCE  
 TO THE MUSIC OF VIGILANCE

"Dining Hours" - "5:00 To 8:30"

**BIDS WANTED**

For Dairy Products

The Ontonagon County Board of Social Services are requesting bids for dairy products for the year August 1, 1976 through July 31, 1977.

All dairy products must meet state and federal regulations. Bids should be delivered or mailed to:

Mr. Robert Mazurek, Administrator  
 500 7th Street  
 Ontonagon, Michigan 49953  
 and must be received no later than 3:00 P.M. Wednesday, July 7, 1976.

The Board reserves the right to reject any or all bids. Bidders may attend the bid opening on July 8, 1976, at 10:30 A.M. at the Ontonagon County Medical Care Facility.


Specifications may be obtained from the Administrator at the Ontonagon County Medical Care Facility.




# The Apothecary

PHONE ----- 885-5301  
EMERGENCY AFTER HOURS PHONE  
885-5530

YOUR PRESCRIPTION AND HEALTH CARE CENTER



MONDAY THROUGH FRIDAY -- 9 To 5  
SATURDAY -- 9 To 12



**FREE  
Parking**

MINERAL RIVER PLAZA, WHITE PINE

**LAKE SUPERIOR SPORTSMEN TRAP SHOOT RESULTS FOR WEEK**

At last Thursday's Trap Shoot at the Lake Superior Sportsmen's Club grounds, two shooters scored a perfect 25. They were Joe Kukanich and Dick Hauswirth, who turned in the scores of 25 straight. This is Joe's second of his career and Dick's first.

Scores of other shooters were: Pete Store, 22-18-19; E. Backing, 23-18; Hauswirth, 24-25-22; Kukanich, 21-22-25; Baker, 21-21-18; Backing, 23-18. From the 22 yard line the scores were: Kukanich, 20; Baker, 25; Hauswirth, 24; Store, 22; Buter, 19; Backing, 18; Gregg, 14; Blodgett, 14.

The club, which is located two miles east of Silver City, this past week formed a team sponsored by Northern Video. The team will shoot at Chassel every other Wednesday. Currently they are in first place with five more shoots to go.

There is open shooting at the Club's range every Thursday starting at 6:30 p.m. You do not have to be a member to take part in this fascinating sport.

**ELECT  
CLYDE BLAKE  
SHERIFF**

(Pd. Pol. Ad.)

**Candlelight  
SUPPER CLUB**

★ **FATHER'S DAY**  
S M O R G A S B O R D  
SERVING - 1 TO 6 P.M.

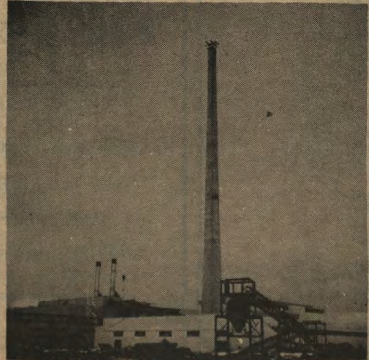
ALSO, OFF THE MENU

Greenland Rd.  
Ontonagon, Mi.

WHITE PINE COPPER DURING EARLY 50'S CONSTRUCTION PERIOD (Photos Courtesy Of Loren Sanford, Bergland, Michigan)



ORIGINAL 5 CRUSHER BINS AT W.P. MINE



SMOKE STACK - FINAL STAGES BEFORE COMPLETION

**CLARK  
CLERK**

(Pd. Pol. Ad.)

**HEALTH DEPT. CLINICS THIS THURSDAY**

The Western Upper Peninsula District Health Department will hold regular monthly clinics on Thursday, June 17, 1976.

The Ontonagon Clinic will be held in the offices of the Health Department located in the Medical Care Facility. The time of this clinic will be 8:45 a.m. until 9:45 a.m.

The Ewen Clinic will be held in the Ewen Community Building from 11:00 a.m. until 11:30 a.m. (This is the new library building.)

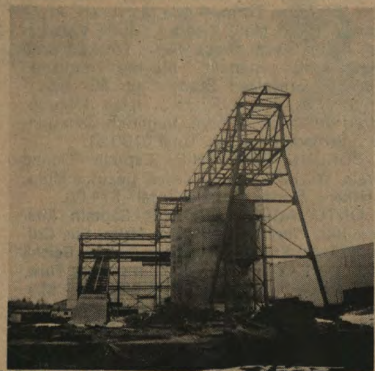
**BIDS WANTED - BUSTEL PROPERTY**

The John Bustel property near Mass, Michigan, is being offered for sale by Elma Lukkarila, General Fiduciary of the Estate of John Victor Bustel, Deceased.

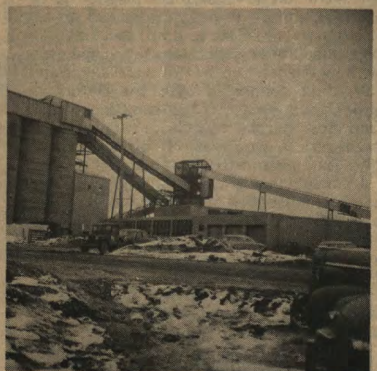
The dwelling is a cabin-type building approximately 16 1/2 feet wide and 30 feet long. It is ready for occupancy and would be ideal as hunting camp property or summer property.

The cabin has two rooms and electricity but does not have running water or indoor plumbing; however, there is a sauna on the property, as well as a little house out back. It is located on property described as the NE1/4 of the NE1/4, Section 18, Town 50 North, Range 38 West, Greenland Township, Ontonagon County, Michigan. This is a 40 acre parcel completely covered with woods, but no standing timber. Some parts of the parcel are marshy.

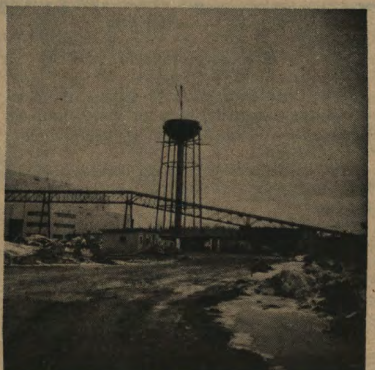
Bids should be submitted to Allen R. Briggs, Attorney for the Estate, 204 River Street, Ontonagon, Michigan, in an envelope plainly marked on front: "BID ON BUSTEL PROPERTY." Bids must be received by 11:00 a.m. on June 25, 1976. The Estate reserves the right to reject any or all bids. For viewing of the premises, contact Elma Lukkarila, Mass, Michigan, Phone (906) 883-3313.



SURGE BIN AT SOUTH END OF FLUX CRUSHER BUILDING



LOOKING EAST FROM THE CRUSHER BUILDING AND TRANSFER NO. 2



WATER TOWER ON EAST SIDE OF POWER HOUSE, BY SPRAY POND



SOUTH END MILL BUILDING AND THE CONSTRUCTION OF C9 CONVEYOR



## REGISTRATION FOR BASKETBALL CAMP CONTINUING

Registration for the basketball camp to be conducted by Rod Repaal continues this week at the White Pine High School office.

The camp has now been moved indoors to the grade school gym. The registration fee of \$2.00 will go towards several awards. The outstanding defensive player, best rebounder, the best free throw shooter, and the player who shows the most hustle will each be awarded a new basketball. Both Coach Antila and Coach Koski are encouraging all high school basketball players to attend the camp, which runs 9:30 to 12:00, Monday through Thursday, the weeks of June 21 and June 28.

## SEE MICHIGAN GUIDE NOW AVAILABLE

Automobile Club of Michigan's June Motor News magazine, a unique guide to hundreds of places to see and things to do in Michigan this summer, is available free of charge at any Triple A office as a service to Michigan motorists.

Some highlights of this special issue are:

A list of hundreds of farms and farm markets across Michigan where visitors can save a third to a half of cost while picking their own tree or garden-fresh fruits and vegetables;

A monthly feature, "Et Cetera," which tells this month about winery tours, a calendar of county fairs, a guide to Michigan's centennial farms and city-owned farmers' markets;

"It's Festival Time," a list of Michigan's spectacular annual festivals with their dates and highlights;

"Michigan's Fields and Farms," a roundup of non-city places and things to see and do this summer, by area;

Two articles of interest to horse lovers, entitled "Get a Horse" and "Michigan is Horse Country," which offer tips to riders, both beginners and old-timers, and list horse shows, race events and some of the stables and trails with rental horses available.

Two regular features, "Dining Out In Michigan," highlighting top dining spots and their cuisine, and "Coming Events in Detroit and Michigan," round out this "See Michigan" issue.

## PROPER INFLATION OF RADIAL TIRES A SAFETY FACTOR

Simply looking at radial tires to see if they are properly inflated can be dangerously misleading cautions the Tire Industry Safety Council.

Tire pressure should be physically measured with an accurate gauge, according to the council.

Council Chairman Malcolm R. Lovell Jr. explains, "Motorists who got used to the slight bulge in the sidewall of a properly inflated radial tire may not be aware that a seriously underinflated radial looks much the same way."

The appearance of a properly inflated radial tire is almost identical to a dangerously underinflated radial lacking 30% or more of the recommended air pressure.

As a car is driven, the sidewalls of any underinflated tire are subjected to much more bending and flexing than they were designed to handle. This excess flexing builds up damaging heat which can reach more than 250 degrees F., much more than needed to boil water.

"This high temperature not only begins to soften the rubber so it wears rapidly, but can break down the tire components and the tire may fail," Lovell said.

Other suggestions about radial tire use from the council include:

When radial tires are used with bias ply or bias belted tires on the same vehicle, the radials must always be placed on the rear wheels. Check automobile manufacturer's recommendations or tire instructions before "mixing" any types or sizes of tires.

When radial tires are used on all wheels, they should be rotated from front to rear on the same side of the car. The criss-cross pattern used with other types of tires should not be used.

Before converting to radials, make sure the suspension system and shock absorbers of your car are engineered for radials, particularly if it is an older model.

Motorists can obtain a free copy of the Consumer Tire Guide containing these and other tire care suggestions by sending a stamped, self-addressed business size envelope to: Tire Industry Safety Council, Box 1801, Washington D.C., 20013.

## LAWN AND GARDEN TIPS FOR MONTH

June is bustin' out all over, and with it comes a variety of reasons to get out and work in the sun. Horticulturists from Michigan State University suggest the following timely lawn and garden activities:

Mow your lawn as frequently as needed to avoid cutting off more than 40% of the leaf surface at any one mowing.

Late in June, fertilize asparagus. All month, keep an eye peeled for asparagus beetles feeding on the ferns and laying eggs on the spears. Control them with malathion, Sevin or methoxychlor to prevent defoliation.

Spring flowering bulbs that did poorly this year may need thinning and transplanting. Dig them up after the bulb coats turn brown and store them in a cool, dry place until fall. Then replant at proper depth and spacing.

Houseplants and other plants grown outdoors in containers dry out quickly. Check them frequently and water when the soil is dry. Hanging baskets dry most rapidly--check them at least once a day.

Pinch mums to make the plants send out side shoots. Remove the top half inch of each shoot when it is six inches long.

Plant gladioli through June for a continuous supply of cut flowers.

Set potted azaleas into a shaded spot in the garden.

Prune and fertilize rambler roses after they have flowered.

Prune spring flowering shrubs--such as forsythia, lilac, flowering quince and mock orange after they have finished blooming.

Plant dahlias, callas, begonias and caladiums. Mulch dahlias after the plants are well established.

Pick strawberries as they ripen. Pick in the morning when the berries are cool. Remove overripe or damaged berries from the patch to minimize fruit rot and attraction of sap beetles. If birds are a problem, cover the patch with bird netting on a wood frame. To maintain top quality, refrigerate berries as soon as possible after harvest.

Apply a second light application of nitrogen to lawns.

Spray to control the bronze birch borer. Keep birches healthy and vigorously growing by watering and fertilizing. Healthy trees are less susceptible to insect attack than weak ones.

Water lawns once a week or as necessary, so the soil is wet to a depth of five or more inches.

Check newly transplanted trees to be sure that all rope or wire is removed from the trunks. If left on a growing tree, a rope or wire becomes a noose that girdles it. Also check guy wires on young trees and adjust or remove them as needed.

Leafhoppers and plant bugs may infest honey locust trees in June or July. Use malathion or Sevin according to label directions to control the pests.

Check your vegetable garden frequently for aphids, mites, caterpillars, beetles and other destructive insects so you can apply controls before the pest population gets out of hand.

If tomato blossom end rot was a problem last year, try to water regularly to avoid extreme fluctuations in soil moisture level.

Remove poinsettia cuttings for blooming plants by Christmas.

Remove faded flowers--not the foliage--from spring flowering bulbs. The leaves must be left to build up the bulb for next year's growth.

Plant brussels sprouts, broccoli, cabbage, cauliflower, Chinese cabbage, kale and endive for a fall vegetable crop.

## OTTAWA FOREST CAMPGROUNDS TO BE PATROLLED BY SHERIFF'S DEPARTMENT

The Ontonagon County Sheriff's Department has again entered into a cooperative law enforcement agreement with the Ottawa National Forest.

According to the Ontonagon District Ranger, Owen Gusler, the sheriff's department will be patrolling national forest campgrounds on an unscheduled basis all summer. The cooperative agreement provides for monetary reimbursement to the department for extra patrols and services rendered on national forest areas.

Both Courtney Lake and Bob Lake Campgrounds have been closed, except to registered campers from 10 p.m. to 6 a.m. This has been done to reduce the traffic and noise created by people "just driving through" the campground late at night. All rules are posted on the bulletin boards and Gusler suggests visitors become familiar with them. Violators of both federal and state laws will be prosecuted.

DOMITROVICH

FISHER

REAL ESTATE

we can help

"CUT THE RED TAPE"



3-BEDROOM, 2-STORY HOUSE WITH FULL BASEMENT, 1-CAR DETACHED GARAGE.  
★... JUST - \$10,500...

★ NEW 3-BEDROOM HOME WITH 2-CAR, ATTACHED GARAGE...

★ A PARTIALLY COMPLETED NEW THREE BEDROOM HOME WITH BASEMENT...  
..... \$17,500!

★ 3-BEDROOM COMPANY TYPE HOME - WHITE PINE - JUST \$13,600!

★ NICE 3 BEDROOM COMPANY TYPE HOME IN WHITE PINE!

★ 4-BEDROOM WITH 1 CAR ATTACHED GARAGE & FINISHED BASEMENT!  
..... \$26,500.....

"ALL THESE HOMES IN WHITE PINE"

Phone - CARL DOMITROVICH - 885-5234  
Evenings

## BOBCAT HUNTING LIMIT PROPOSED - UP

The upcoming Upper Peninsula bobcat hunting season would be limited for the first time ever under a Department of Natural Resources proposal.

The department said prices for prime bobcat furs are rising because of an apparent continuing decline of bobcats in the U.P.

The DNR's Wildlife Division has proposed that the 1976-1977 hunting and trapping season in the U.P. run from Oct. 25 to March 31. Previously there was no closed season.

The Natural Resources Commission will make the final decision. The DNR is asking that the northern Lower Peninsula's season for hunting and trapping bobcats remain the same, Jan. 1 through Feb. 28.

Commenting on the U.P. proposal, David Jenkins, chief of the wildlife division, said, "We propose to restrict the harvest, both by hunting and trapping, to that period during which fur values are greatest and before the vulnerable young bobcats move out of their dens."

Jenkins said the DNR also wants the commission to require hunters and trappers taking bobcats in the U.P. to register all bobcats taken so that information on population levels can be obtained.

Also being considered at the next Commission meeting in Sault Ste. Marie will be the hunting seasons for the ruffed grouse, rabbits, bobwhite quail and the put-take pheasant program.

ELECT  
**SHANKLE**  
FOR  
**SHERIFF**  
(Pd. Pol. Ad.)

McKEVITT-KERSHNER-PATRICK CO.

COMPLETE HOME FURNISHINGS  
FURNITURE • 212-14 SUFFOLK  
CARPETING • IRONWOOD  
APPLIANCES • 932-1130



"PROSPECTING IN THE TERRITORY"

**BASEMENT SALE** - Wednesday, Thursday, & Friday, June 16, 17, 18. 2-Family. 1004 Greenwood Circle, White Pine, 9:30 to 3:00.

**HANDYMAN** - Good Work At Reasonable Rates. Inside Or Outside Remodeling. Concrete Work. Will Seal Basements, Build Patios, Etc. Phone - Joe Albeck, 884-4579.

**PUPS TO GIVE AWAY** - 3 Malamutes. Also, Hoover Portable Washer For Sale. Ph. 885-3541.

**WANTED - SOMEONE WITH TRUCK** To Haul Brush. May Have Any Firewood With It. Phone 884-4233.

**WANTED - SPOILED HAY** - Phone 885-5168 In The Evening Or 885-5557 Days.

**RUMMAGE-GARAGE SALE** - Thursday & Friday, June 17 & 18. Begins At 10 A.M. Many Children's Clothes, Toys, Bikes, Some Antiques, Odds 'n Ends. Lots & Lots Of Stuff.

**FOR RENT** - 2 Bedroom Apartment in White Pine. Available Now! Phone 885-5148 (Afternoons Only.)

**IF ALCOHOL OR DRUGS DISTURB YOUR LIFE** - AND SOMETIMES MAKE YOU BLUE, COME JOIN US HERE AT AL-A-TEEN. **WW ALL WILL WELCOME YOU.** Meetings Held Tuesday, 7:30 p.m., Bergland Catholic Church.

We Will Be Making **PASTIES** Every Thursday At The **WHITE PINE AMERICAN LEGION**. Order Before Thursday By Calling 885-5471.

**WHITE PINE A.A. & AL-ANON.** Meet Every Thursday Night - 7:30 p.m. - A.A. At Union Hall, Al-Anon. At Faith Lutheran Church. Open Meetings Last Thursday Of Each Month. The Public Is Invited.

**FOR HIRE** - Music For Listening Or Dancing! The Coppertones Will Give You Polkas-Waltz-Country-Rock. Phone 884-2791, 885-5165, Or 885-5376.

**FOR SALE** - 1973 Mazda - Rotary Engine, Great Shape, Station Wagon RX-3, Denver Car-No Rust. Best Offer Over \$1,800. Phone - 885-5542.

Hansen, Cindy Baker, Helen Miles, Loretta Hartzell, Shirley Keranen, Dorre Cherro, Judy Stahl, Marguerite Stripe. Total \$184.02.

Area 2 - Captain - Mrs. Sandra Morin, Workers, Beth Wilson, Nancy McHone, Marsha Bobula, Sue Hadden, Shirley Wing, Liz Pappas, Sandra Morin. Total \$214.71. Area 3 - Captain - Mrs. Mae Sloat, Workers - Sue Giesau, Thelma Orcutt, Mae Sloat, Judy Anderla. Total \$69.20. Area 4 - Captain - Mrs. Bev Meagher, Workers, Gloria Guilbault, Paulette Gervae, Liz Tandlund, Colleen Olson, Lynda Haas, Bev Meagher. Total \$71.67. Area 5 - Captain, Mrs. Linda Kekke, Workers - Beth Michel, Inge DeHut, Pauline Frazer, Linda Kekke. Total \$95.06. Area 6 - a) Captain, Mrs. Joan Immonen, Workers, Mary Turner, Sharon Hickey, Irene Barradas, Diane Ollila, Wilhemina O'Connor. Total - \$139.10. b) Captain - Mrs. Jeanne Rosemurgy, Workers - Bev Jennings, Fran Voyce, Maureen Kilmer, Mary Gotham, Lynne Bigge, Joyce Fitze. Total \$199.60. Area 7 - Downtown Ontonagon - Captains - Charlotte Lackie, Bea Landers, Donna White, Vivian Cane Roehm, Total \$322.50.

**CARP LAKE TOWNSHIP** - Captain - Mrs. Connie Mukavitz, Captain - Mrs. Win Stillwell, Workers - White Pine Women's Club Members - Karalyn Johnson, Karen Koski, Gerry Rigoni, Lee Parker, Helen Heil, Sue Bekkala, Pauline Rabideau, Ruby Axelson, Harriet Ozanich, Jan Mohar, Eunice Brady, Fran Poisson, Sharon Piper, Ann Garcia, Lois McGunnegle, Eleanor Wertz, Dorothy Harris, Ann Sved, Garnet Durand, Ann Baird, Marion Girucky, Barbara Jones, Laverne Evans, Irene Frisk, Helen Whiton, Beverly Kowaleski, Lydia Jones, Carol Bear, Courtlen Calhoun, Jean Belkonen, Linda Fischer, Karen Brockelsby and special helper for the GREEN area - Gloria Hare. Total \$718.05.

Collected in cannisters - \$50.82; By Memorials - \$480.00; Organizations - \$322.55. This year's **GRAND TOTAL** - \$5300.92.

Audited and submitted by Clarice A. Strong, Sec/Treas/Crusade Chairwoman, June 13, 1976.

(Continued From Page 9, Col. 3)

**VOTE FOR AND SUPPORT**  
**"JERRY" KITZMAN**  
 For Sheriff  
 Of Ontonagon County  
**EXPERIENCED, QUALIFIED,  
 PROVEN ABILITY**  
**DEMOCRAT**  
 (Pd. Pol. Ad.)

**ARMYWORMS NOW THREATENING CROPS**  
 Last year the armyworm waged its most destructive attack on Michigan's history. Now it is on the move again.

Michigan State University entomologist Robert Ruppel says the crop-chewing pest has already been detected in abundant numbers in the counties of Allegan and Van Buren. According to Ruppel, the armyworms will attack grains and also other crops such as sugar beets and peas.

Grain producers should check heavy stands of small grain for chewed margins of leaves and for small green pellets under the plants. Armyworms may completely destroy the plant, but usually leave the tough midribs and stems uneaten. They will also feed on the heads of small grains and clip the stems so that the heads fall off.

Ruppel said that last year's attack cost thousands of dollars in agricultural damage.

"I'm not predicting a repeat of last year," Ruppel added, "but I am a little gun-shy. That onslaught caught a lot of growers off guard and the key to adequate control is early detection."

According to Ruppel, the armyworms are difficult to kill with insecticide once they're all grown.

Armyworms are native to Michigan, up to two inches long and greenish to nearly black. They usually have a prominent pale stripe on each side and a thin stripe down the center of the back.

Where infestations are heavy, farmers should check with their local county extension agricultural agent for recommended spray programs, advised Ruppel.

