

No Word From Supt. Born on New Contract

Although voted a two year contract with the salary figure and expense allowance to be decided at a later date, no announcement has been made to yesterday by Supt. E. W. Born whether or not he was accepting the Negaunee Board of Education offer made at a special meeting Saturday morning.

Approval of a new contract for the superintendent of a three-to-one vote. Voting in favor of the proposal were Leslie Richards, Paul Bell and Sam Ford, while the negative vote was cast by Thomas Collins.

Absent from the meeting was Orlis Marjama, who accompanied his wife to Ann Arbor, where she is a patient in University hospital.

Marjama contacted Leslie W. Richards in a long distance call from Ann Arbor Monday night, and expressed his approval of the action taken by the majority of the board in offering Supt. Born a new two year contract.

In explaining the reason for his action, Collins stated he believed contracts should be made up only at contract time, usually in March or April of each year, when contracts are tendered to faculty members and non-teaching personnel.

Supt. Born requested the special meeting in view of a contract which he has been offered by the school system in a Wisconsin city of 10,000 people.

It disclosed that in the event he accepted the position it would be necessary for him to return to the Wisconsin City as of Jan. 1, 1936.

Board members informed Born that the new two-year contract they were offering would take effect upon expiration of his present agreement on July 1, 1935; that the salary would not be any less than the figure he is presently receiving, and that they approved of his taking the increase in the nominal expense account which he receives at present. However, they stated they would prefer to have Marjama present before settling on the salary figure and the amount of expense which would be allowed.

Initial Check Drive Report Encouraging

Including a donation of \$500 from the United Steelworkers, Local 4595, contributions to the 1935 Negaunee Community Chest Fund this week reached the \$5,008, although according to Gordon Rice, Chest secretary.

Although this figure is slightly less than 40 per cent of the campaign goal of \$8,440, it is very optimistic that the quota may be met in Negaunee this year, as the initial report included only a partial response from the business district, plus some returns from the special gift returns, in addition to the Steelworkers' contribution.

Meet Your Michigan

COUNCIL AUTHORIZES STUDY OF COMMUNITY BUILDING SUB-SOIL

Members of the City Council at their last meeting voted to engage services of Intrusion-Prepakt, Inc. to obtain soil samples beneath the municipal building housing Negaunee Needle, for the purpose of securing an estimate of expense involved in proceeding with work to stabilize the foundation of the building.

Action was taken on recommendation of City Manager George E. Meholick, Jr., following receipt of communication from Intrusion-Prepakt in response to a request by the manager for a cost estimate on making the improvement necessitated by a drop in building supports.

Intrusion-Prepakt sent an engineer to Negaunee to study conditions of the foundation, and as a result of his findings, submitted the following report to the manager:

"The foundation of this structure, for the most part, is built to be supported with a combination piling, bearing and spread footing. For the most part, some of these piling appear to have lost their bearing value some time ago, while others are possibly of some value now.

"This shift of support has been gradual and the settlement has likewise been gradual. The recent movement and appearance of the new crack near the street doorway is apparently only the result of the shift of the soil which are now concentrated near the new structure.

"The structure settled most appreciably in the northeast corner, which is near the driveway and on the downhill side. Other portions include the center and southeast piling, mainly near the center of the building mass.

"Since we have not had opportunity to test the soil conditions in this area as yet, we are submitting our estimate on the cost for the foundation repairs based on our experience with other structures near the same area.

estimate of the amount of work required. These soil tests will cost approximately \$600.

"In addition, it is advisable to have a survey made of the building, which will determine some bench marks at various locations, to show the plumb line of various exterior walls, which might be in the process of moving. We are specifically concerned with the plumbness of the north, east and west walls, and the elevation of the interior columns."

Council was concerned in its discussion that the improvement required a project for which no funds had been budgeted. While some money would be available from the city fund, the city fathers did not like the idea of using it, if it could be avoided.

Yule Carnival Committee Will Meet Next Week

Initial meeting will be held the first part of next week of the special Negaunee Business and Professional Association committees, appointed by President Dorste Roos, to lay the ground work for the 1935 Christmas Carnival here.

Members of the committee named by the DPA leader are Neil Ahola, Victor Wehmann, Francis Hesse, Carl Lehto, Tom Pellow and Stuart Preece.

First holiday shopping promotion of its kind in the area, the Christmas Carnival has been an annual feature in Negaunee for the last eight years.

Running throughout the holiday season, it features special attractions for Christmas shoppers, plus gifts donated by business concerns participating in the event.

In addition, the committee will be holding a series of youngsters, several events, Christmas music, various occasions, Christmas music and programs jointly with the Theatre management the annual Christmas party, which has been held from which are distributed to needy families in the Negaunee area by the Salvation Army.

EARL WAGNER, MINNESOTA MAN WILL REPLACE GEORGE MEHOLICK AS CITY MANAGER AT NEGAUNEE

Earl P. Wagner became the third city manager in Negaunee history when he was named to replace George E. Meholick, Jr., at a special meeting of the City Council Monday night. Meholick Tuesday assumed the manager post at Marquette to which he was named a month ago.

The new Negaunee manager, who will assume his duties on December 1, has been occupying the position of chief executive officer at Wausau, Wis., since Monday night, he submitted his resignation at a regular meeting of the council in that city Tuesday night.

A native of South Bend, Ind., where he attended Central High School, Wagner enrolled at the University of Minnesota, where he received his bachelor of arts degree with a major in political science and his master of arts, majoring in education.

Tribute Paid Meholick for Management

In a resolution passed at a special meeting, the final session attended by George E. Meholick, Jr., in the capacity of city manager before assuming similar duties at Marquette, members of the Negaunee governing body paid tribute to the administration by Meholick during the past three years.

Mayor Fred Harris, in proposing the commendation resolution, stated, "I am happy to have had George as city manager during the past three years. He has been a man on leave, although I take pride in his promotion and progress in his present position. He has left the following resolution commending George for his services to Negaunee:

"Whereas, George Meholick, Jr., has resigned as Negaunee city manager effective Nov. 1, 1935, to accept a similar position with the city of Marquette; and

"Whereas, Mr. Meholick has served the people and the local government of Negaunee with great ability and has shown the highest degree of Negaunee city manager on June 1, 1933; and

"Whereas, the largest public works program in the history of this city was undertaken during Mr. Meholick's tenure, and his many personal attributes have endeared him to the citizens of this council and the citizens of this community;

"Now, Therefore, Be It Resolved By This Present:

"That Mr. Meholick be highly commended for the outstanding public service that he rendered as city manager of Negaunee;

"That every effort be made for a successful administration in Marquette be extended him;

"That a copy of this resolution under corporate seal be forwarded to Mr. Meholick;

Supported by Councilman Agnes, the resolution was unanimously adopted.

Meholick, replying to the commendation from the council paid tribute to the Negaunee body during the session in which he served as manager.

"It is without question the first group of men in city government that I have had the pleasure of working with. The Negaunee government is only as good as its representatives, and my appreciation, and my appreciation, which I have enjoyed in Negaunee are due to the splendid support of the

Power Company Wiring Condition

Power company officials were expected to be in Negaunee this week to determine a method of re-wiring, which will eliminate the possibility of a blackout that occurred last Friday morning, when the municipality was without electricity for 45 minute period.

Friday's failure occurred when a lightning bolt struck the main Millie cut at 2:00 - with spark, thereby eliminating the municipality's electric supply.

With the main line, which supplies the principal distribution point at the Millie cut, a new line to the town of Mine, any trouble at the main line will not cut the municipal power supply.

Company officials hope to devise a method of wiring, which will eliminate this possibility in the

Board of Supervisors Official Proceedings County of Marquette

Marquette, Michigan

October 10, 1955.

The Board of Supervisors of Marquette County met pursuant to a call duly made at the Court House in the City of Marquette, on Monday, the 10th day of October, A.D. 1955 at 10:00 o'clock A.M.

The meeting was called to order by the Chairman, Carl W. Corneliuson.

The roll being called the following Supervisors were found to be present:

Aho, Allen, Atobello, Anderson, Boudry, Ballarom, Brewer, Carlson, Corneliuson, Crosslander, Dompierre, Dewey, Ewing, Gilard, Hamel, Hibel, Hill, Hooper, Jensen, Johnson, Edwin W., Kivexka, Kivela, Kjelmann, LaChance, Larson, Maki, Ollis, Parroy, Rautio, Ross, Sandstrom, Scherwin, Sierkema, Swanson, Tuominen, Valenti, VanZackler, Wiley, Wiseman, York.

Absent: Backlund, Bosley, Johnson and Crick.

Supervisor Hooper moved that in the temporary absence of the Clerk and County Clerk that Mr. DeToche, the Controller, act as Clerk

OFFICE OF COUNTY TREASURER, MARQUETTE COUNTY Rejected Taxes Charged Back by Auditor General as of June 30, 1955.

	County Tax	County Road Tax	Total Co. Tax	Township	Grand Totals
City of Marquette	2.70	1.01	3.77	169.31	172.08
Champion Township	0.70	32	1.13	2.11	3.24
Cheboygan Township	2.00	2.33	4.33	100.30	104.63
Ely Township	0.81	2.28	3.09	23.51	26.60
Humboldt Township	1.05	4.1	5.15	1.18	6.33
Ishpeming Township	4.85	1.84	6.69	15.43	22.12
Marquette Township	24.60	6.63	31.23	73.52	104.75
Michiganville Township	4.89	1.89	6.78	13.03	20.81
Powell Township	10.35	4.06	14.41	22.85	37.26
Richmond Township	2.90	1.23	4.13	11.47	15.60
Sands Township	3.13	1.12	4.25	6.00	10.25
Skandia Township	5.02	1.92	6.94	4.99	11.93
Turin Township	5.68	2.18	7.86	5.14	13.00
Wells Township	8.35	1.70	6.65	4.83	10.88
	86.14	33.87	119.91	386.25	485.77

Respectfully submitted,

W. T. Ross

Chairman, Finance and Taxation Committee.
To the Honorable Chairman and Members of Marquette County Board of Supervisors, Marquette County, Michigan.

Your Finance and Taxation Committee recommends that the County and County Road taxes to be raised are to be apportioned between the three cities and the sixteen townships according to the tabulating which follows:

CITIES—	Valuation	County Tax Mills	County Tax Amount	Co. Road Tax Mills	Co. Road Tax Amount	Total Amount
Ishpeming	\$23,387,875	6.40	\$149,554.40	2.10	\$49,072.54	\$198,626.94
Marquette	19,855,000	6.40	127,072.00	2.10	41,685.50	168,757.50
Negaunee	29,173,000	6.40	129,534.72	2.10	42,444.52	171,979.24
TOWNSHIPS—						
Champion	2,577,928	6.40	16,492.36	2.10	5,411.75	21,904.11
Cheboygan	1,109,250	6.40	7,099.20	2.10	2,317.50	9,416.70
Ely	3,781,745	6.40	24,203.17	2.10	7,941.68	32,144.85
Ewing	2,170,710	6.40	13,894.24	2.10	4,555.00	18,449.23
Forxith	1,945,410	6.40	12,450.62	2.10	3,245.58	15,696.20
Humboldt	1,999,052	6.40	12,795.12	2.10	3,561.71	16,356.84
Ishpeming	1,010,710	6.40	6,503.25	2.10	2,382.40	8,885.64
Marquette	1,800,000	6.40	11,520.00	2.10	3,865.30	15,385.30
Michiganville	1,055,084	6.40	6,738.58	2.10	2,216.84	8,955.42
Negaunee	1,303,428	6.40	8,371.76	2.10	2,826.21	11,197.97
Powell	1,997,820	6.40	12,789.05	2.10	4,565.45	17,354.50
Republic	1,475,960	6.40	9,446.14	2.10	3,099.52	12,545.66
Richmond	1,001,730	6.40	6,410.77	2.10	2,165.63	8,576.40
Sands	309,350	6.40	1,980.24	2.10	639.84	2,619.48
Skandia	473,485	6.40	3,030.50	2.10	994.32	4,024.82
Turin	3,284,971	6.40	21,079.51	2.10	5,512.44	26,591.95
Wells	1,600,515	6.40	10,281.45	2.10	335.98	10,617.43
Wells	991,340	6.40	6,344.58	2.10	2,081.81	8,426.39
West Branch	287,000	6.40	1,846.08	2.10	640.12	2,486.20
TOTALS	\$20,345,037	6.40	\$571,814.12	2.10	\$187,828.51	\$759,642.63

Respectfully submitted,

W. T. Ross

Chairman, Finance and Taxation Committee.
To the Honorable Chairman and Members of Marquette County Board of Supervisors, Marquette County, Michigan.

Respectfully submitted,
W. T. Ross
Chairman, Finance and Taxation Committee.

Your Finance and Taxation Committee recommended that the various Departments in the Court House keep within the budgets as adopted at the annual meeting and that no clerk hire or salaries be paid beyond the amount fixed by the Board of Supervisors.

In the case of an emergency or a Department requires additional funds or needs some special equipment, which could not be foreseen at the time of the annual meeting, we recommend that the head of that Department,

for the meeting, supported by Supervisor Larson, be considered.

The Chairman ordered the regular rules of order suspended to enable the Finance and Taxation Committee to present their report to the Board at this time.

Supervisor Ross then read the following Finance and Taxation Committee report comprised of nine parts and moved its adoption, supported by Supervisor Alibello and unanimously carried.

To the Honorable Chairman and Members of Marquette County Board of Supervisors, Marquette County, Michigan.

Your Committee on Finance & Taxation having had under consideration the various laws of 1954 and prior years charged back and rejected by the Auditor General and County Treasurer, respectfully recommends that the same be charged up to the several Townships and Cities in which the lands lie and that the said taxes be assessed against the said lands where practicable, and that the same be entered separately on the respective assessment rolls as "Rejected Taxes".

To the Honorable Chairman and Members of Marquette County Board of Supervisors, Marquette County, Michigan.

Respectfully submitted,
W. T. Ross
Chairman, Finance and Taxation Committee.
To the Honorable Chairman and Members of Marquette County Board of Supervisors, Marquette County, Michigan.

Your Finance and Taxation Committee has had under consideration the request of the Marquette County Library for an appropriation of \$50,000 for 1958 to enable them to bring the law library up to date. This Committee recommends the allowance of the appropriation.

Respectfully submitted,
W. T. Ross
Chairman, Finance and Taxation Committee.

To the Honorable Chairman and Members of Marquette County Board of Supervisors, Marquette County, Michigan.

Your Finance and Taxation Committee has considered the request of the Michigan Correlates Commission for an appropriation of \$1,000.00 to cover the cost of a one-half time clerk in probate work for Marquette County. The State has provided this district with an additional full time probation officer but no provision was made for clerical help. It is believed that this additional service will save a considerable amount in county expense by shortening the "lay over" time for prisoners in the county jail and in the collection of court costs which are payable to the General Fund of the County. This committee wishes to recommend the appropriation of \$1,000.00 on a provisional basis for one year.

Respectfully submitted,
W. T. Ross
Chairman, Finance and Taxation Committee.

To the Honorable Chairman and Members of Marquette County Board of Supervisors, Marquette County, Michigan.

Your Finance and Taxation Committee has had under consideration the various salaries of the Court House, Jail and Department of Social Welfare employees, recommended that the salary schedule be changed, effective January 1, 1956 as follows:

That the following employees be granted an increase in salary \$20.00 per month: Friend of the Court
Assistant Prosecuting Attorney
Deputy County Clerk
Clerk, County Clerk's Office
Deputy County Treasurer
Clerk, County Treasurer's Office
Probate Register
Clerk, Judge of Probate's Office
Deputy Register of Deeds
Deputy Register of Deeds Office
Doc. Department Clerk
Undersheriff
Night Deputy Sheriff
Day Deputy Sheriff
Extra Deputy Sheriff
Janitor, Court House
Stenographer, Agric. Agents Office
County School Nurse
Secretary, School Sup't's. Office

That the following employees be granted an increase in salary of \$10.00 per month: Clerk, County Treasurer's Office, 1/2 time
Veterans' Registrar, 1/2 time
That the County Controller be granted an increase in salary of \$100.00 per month;
That the salaries of the full time employees of the Department of Social Welfare be increased \$20.00 per month and the salaries of part time employees of said department be increased \$10.00 per month.

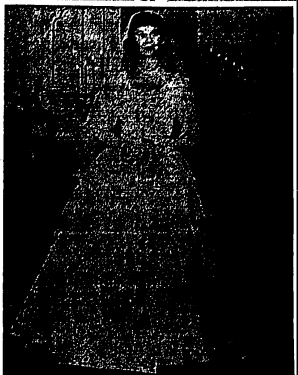
Respectfully submitted,
W. T. Ross
Chairman, Finance and Taxation Committee.

Continued On Page 3A

together with the Controller, present this matter to the Board of Supervisors for their consideration and that they grant, where deemed necessary, authority to exceed the figures established in the annual budget.

If it develops that the amount stipulated in the budget of any Department exceeds the need of that Department or if a sum authorized is found unnecessary, then we recommend that authority be granted transferring a sum or surplus to some other Department by proper resolution of the Board of Supervisors.

Respectfully submitted,
W. T. Ross
Chairman, Finance and Taxation Committee.



PATRICIA GAIL BESSOLO

Photo by Beakl Strick

Patricia Bessolo Becomes Bride of Arthur H. Kananan

Miss Patricia Gail Bessolo, Negaunee, became the bride of Arthur H. Kananan, Highland Park at a candlelight service in Immanuel Lutheran church, with Rev. John E. Hatfield officiating at the double ring ceremony.

Preceding the ceremony, Mrs. Richard Sanford sang "Oh Promise Me." While the couple knelt at the altar, Miss Juliana Miller, Marquette, sang "The Lord's Prayer."

The bride, daughter of Mr. and Mrs. Frank Bessolo, 321 W. Clark Street, was given in marriage by her father. She was attired in a gown of white satin, with a full sweeping skirt of lace and tulle panels. The bodice was of broad-shouldered lace with aquinas and a eed pearls outlining the scalloped yoke of the neckline. A pearl trimmed Juliet cap secured her fingertip curls. One white orchid rested on the prayer book which she carried. Her only jewelry was a single strand of pearls.

Mrs. Sanford was the matron of honor. Miss Judith Collins, Lansing, was bridesmaid. The attendants were identical floor length gowns of light blue crystalite, with matching headpieces, and carried bouquets of roses, asters, and white pompon.

The son of Mr. and Mrs. Henry Kananan, Houghton, was attended by Frank Toveston of Houghton, as best man, and Marvin Itap-pura of Houghton as groomsmen. Ushering duties were performed by Paul Otto and Gordon Archambau of Houghton.

The bride's mother wore an aqua street-length dress, with dusky rose and black accessories, and an orchid corsage. The bridegroom's mother chose a light blue street-length dress, with white accessories. Her corsage was identical to that of the bride's mother. The paternal grandparents of the bride were also in attendance. Mrs. Bessolo wore a steel blue dress with matching accessories. Her corsage was of pink rose and white pompon.

A reception was held in the church parlor immediately following the ceremony. After the couple cut their three-tiered wedding cake, it was served by Miss Beverly Talo and Mrs. David Mitchell, Houghton. Mrs. Kathleen Taston and Miss Carol Alongo opened the gifts. The Misses Shirley Sainio and Gertrude Sherrott, Marquette, poured. Shirley Bussolo, cousin of the bride, restored the guests.

For going away the bride wore a winter white suit with black accessories, and a corsage of one white orchid.

The bride is a graduate of Negaunee High School, and St. Luke's Hospital School of Nursing. This afternoon graduated from Houghton High School and has served for six years in the U. S. Marine Corps. He also attended Northern Michigan College. At present he is working in Highland Park.

A rehearsal dinner was held at the Northwoods Friday evening. At this time the couple presented their attendants with gifts.

Out of town guests were from Ironport, Marquette, Houghton, Hancock, Detroit, Lansing, Milwaukee, and Bristol, Tenn.

Following a short wedding trip, the couple will reside in Highland Park.



DRESS PROBLEM:

So dainty... So chic
in every line!
How can we keep
it that way?



SOLUTION: Sanitone DRY CLEANING

The Sanitone way is the gentle way with fine fabrics yet it is amazingly thorough. It not only gets out ALL the dirt but it restores the original look and feel of the cloth—makes it drap better and hold a press and stay new looking longer. It's the best "sweat insurance" money can buy, yet costs no more than ordinary dry cleaning. Call for service today.



BANNON CLEANERS

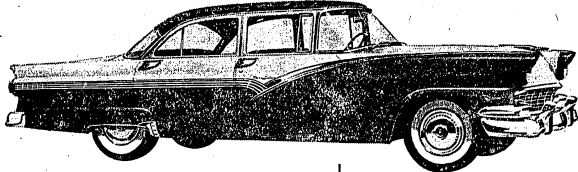
PHONES

Negaunee - Gramin 5-8951
Ironport - Hudson 8-2111
Marquette - Canal 8-8991

ONLY IN THE '56 FORD... THUNDERBIRD POWER, THUNDERBIRD STYLING and LIFEGUARD DESIGN

In the low-price field
You can't buy safer!

And here's why. Ford alone brings you Lifeguard Design, a whole new family of safety features to give you extra protection in case of accident. There's a new Lifeguard deep-center steering wheel to help cushion the driver from the steering post; * new Lifeguard double-grip door latches to reduce the danger of doors springing open under impact; * new double-swivel Lifeguard mirror that "gives" for greater safety; * new optional Lifeguard padding material to cushion control panel and sun visors and lessen shock of impact; * optional floor-anchored seat belts to help hold passengers securely in their seats.



In any class
You can't buy better!

The '56 Ford inherited its beauty from the Thunderbird. It's long and low—a line cut in every graceful line. And you can have this Thunderbird's "lightning" too, at no extra cost for the new Thunderbird V-8 engine is the standard eight in all Packards and Station Wagon models! Here's power that gives you split-second passing ability and hill-climbing "Go." Come in for your Test Drive... today! You're sure to find many more reasons why you can't buy better than when you buy Ford. New luxury interior... fine exterior finishes... a quality "feel" throughout... all add up to make this 1956 Ford the fine car at half the fine-car price.

It's the fine car at
half the fine-car price!

'56 Ford

F.O.A.

YOUR LOCAL FORD DEALER

Marilyn Riecki Weds Local Man At Immanuel Lutheran Church



Marilyn Riecki and her groom, James H. Riecki, at their wedding ceremony at Immanuel Lutheran Church.

Announcement has been made of the marriage of Miss Marilyn Ruth Riecki, daughter of Mr. and Mrs. William H. Riecki, Box 57, Palmer, and Ronald Wayne Laitinen, son of Mr. and Mrs. Tolvo Laitinen, Negaunee.

The Rev. John E. Hattala performed the double ring ceremony in Immanuel Lutheran Church. Nuptial music was played by Miss Jeanne Harjo, Mrs. Norman Szymay, Jr., sang "I Love You Truly" and "Oh Promise Me."

The bride, given in marriage by her father, was attended by nylon

and Charilly lace over tulle. The lace bodice of the floor-length gown was detailed with a ruffled neckline and a full skirt of tulle. The bride wore a white tulle and nylon veil and carried a cascade bouquet of white mums and pink rose buds. She wore a single strand of pearls and a diamond necklace.

The groom wore a white tulle and nylon suit with a white shirt and a white tie. He carried a boutonniere of white mums and pink rose buds. He wore a single strand of pearls and a diamond necklace.

The wedding ceremony was held at Immanuel Lutheran Church, 1000 N. 1st St., Negaunee, Michigan, on Thursday, October 27, 1955, at 10 o'clock in the forenoon.

The bride and groom were accompanied by their parents and other relatives. The reception was held at the home of the bride's parents.

The bride and groom are now residing in Negaunee, Michigan. They will be celebrating their first anniversary on October 27, 1956.

The bride and groom are both employed in Negaunee, Michigan. The bride is a typewriter operator and the groom is a machanic.

The bride and groom are both members of the Immanuel Lutheran Church. They were baptized as infants and confirmed as teenagers.

The bride and groom are both graduates of the Negaunee Public School. The bride graduated in 1951 and the groom graduated in 1952.

The bride and groom are both active members of the Negaunee Community Club. They have both served as officers of the club.

The bride and groom are both active members of the Negaunee Junior League. They have both served as officers of the league.

The bride and groom are both active members of the Negaunee Senior Citizens Club. They have both served as officers of the club.

The bride and groom are both active members of the Negaunee Women's Club. They have both served as officers of the club.

The bride and groom are both active members of the Negaunee Garden Club. They have both served as officers of the club.

The bride and groom are both active members of the Negaunee Golf Club. They have both served as officers of the club.

The bride and groom are both active members of the Negaunee Tennis Club. They have both served as officers of the club.

matching earrings, the gift of the groom. The bride's trousseau included a white tulle and nylon veil, a white tulle and nylon suit, a white tulle and nylon hat, a white tulle and nylon bag, a white tulle and nylon shawl, a white tulle and nylon scarf, a white tulle and nylon gloves, a white tulle and nylon shoes, a white tulle and nylon stockings, a white tulle and nylon undergarments, a white tulle and nylon jewelry, a white tulle and nylon hair accessories, a white tulle and nylon beauty accessories, a white tulle and nylon travel accessories, a white tulle and nylon miscellaneous items.

Miss Joanne Niemi, the bride's cousin, from Richmond, Mo., was maid of honor. Nancy Kivimäki, sister of the bride, was bridesmaid. They were dressed identically in floor length gowns of pink nylon tulle and tulle. They wore pale clip hats of tulle and nylon and carried bouquets of mums and rose buds.

David Stromquist was best man. Groomsmen were James Jurnu

and James R. O'ough. Ushers were Jack Riecki and Richard Borrough.

Mrs. Riecki wore a navy blue, long-sleeved, strapless dress with white accessories and a corsage of pink roses. The bridegroom's attire chose an aqua blue crepe dress with grey accessories and a corsage of pink roses.

Mrs. Jacob Anderson, the bride's maternal grandmother, wore a navy blue dress with a corsage of white and pink roses. A pink and white color scheme was used for the wedding reception.

After the first slice of the wedding cake was cut by the bride and groom, it was served by Miss Joanne Niemi, the bride's cousin. The bride's cousin, Miss Joanne Niemi, was the first to cut the cake. The bride and groom then cut the cake together. The bride and groom then served the cake to the guests.

The bride and groom then served the cake to the guests. The bride and groom then served the cake to the guests. The bride and groom then served the cake to the guests. The bride and groom then served the cake to the guests.

The bride and groom then served the cake to the guests. The bride and groom then served the cake to the guests. The bride and groom then served the cake to the guests. The bride and groom then served the cake to the guests.

The bride and groom then served the cake to the guests. The bride and groom then served the cake to the guests. The bride and groom then served the cake to the guests. The bride and groom then served the cake to the guests.

The bride and groom then served the cake to the guests. The bride and groom then served the cake to the guests. The bride and groom then served the cake to the guests. The bride and groom then served the cake to the guests.

The bride and groom then served the cake to the guests. The bride and groom then served the cake to the guests. The bride and groom then served the cake to the guests. The bride and groom then served the cake to the guests.

The bride and groom then served the cake to the guests. The bride and groom then served the cake to the guests. The bride and groom then served the cake to the guests. The bride and groom then served the cake to the guests.

The bride and groom then served the cake to the guests. The bride and groom then served the cake to the guests. The bride and groom then served the cake to the guests. The bride and groom then served the cake to the guests.

The bride and groom then served the cake to the guests. The bride and groom then served the cake to the guests. The bride and groom then served the cake to the guests. The bride and groom then served the cake to the guests.

The bride and groom then served the cake to the guests. The bride and groom then served the cake to the guests. The bride and groom then served the cake to the guests. The bride and groom then served the cake to the guests.

The bride and groom then served the cake to the guests. The bride and groom then served the cake to the guests. The bride and groom then served the cake to the guests. The bride and groom then served the cake to the guests.

The bride and groom then served the cake to the guests. The bride and groom then served the cake to the guests. The bride and groom then served the cake to the guests. The bride and groom then served the cake to the guests.

The bride and groom then served the cake to the guests. The bride and groom then served the cake to the guests. The bride and groom then served the cake to the guests. The bride and groom then served the cake to the guests.

The bride and groom then served the cake to the guests. The bride and groom then served the cake to the guests. The bride and groom then served the cake to the guests. The bride and groom then served the cake to the guests.

The bride and groom then served the cake to the guests. The bride and groom then served the cake to the guests. The bride and groom then served the cake to the guests. The bride and groom then served the cake to the guests.

The bride and groom then served the cake to the guests. The bride and groom then served the cake to the guests. The bride and groom then served the cake to the guests. The bride and groom then served the cake to the guests.

The bride and groom then served the cake to the guests. The bride and groom then served the cake to the guests. The bride and groom then served the cake to the guests. The bride and groom then served the cake to the guests.

The bride and groom then served the cake to the guests. The bride and groom then served the cake to the guests. The bride and groom then served the cake to the guests. The bride and groom then served the cake to the guests.

The bride and groom then served the cake to the guests. The bride and groom then served the cake to the guests. The bride and groom then served the cake to the guests. The bride and groom then served the cake to the guests.

was used for the wedding reception. After the first slice of the wedding cake was cut by the bride and groom, it was served by Miss Joanne Niemi, the bride's cousin. The bride's cousin, Miss Joanne Niemi, was the first to cut the cake. The bride and groom then cut the cake together. The bride and groom then served the cake to the guests.

The bride and groom then served the cake to the guests. The bride and groom then served the cake to the guests. The bride and groom then served the cake to the guests. The bride and groom then served the cake to the guests.

The bride and groom then served the cake to the guests. The bride and groom then served the cake to the guests. The bride and groom then served the cake to the guests. The bride and groom then served the cake to the guests.

The bride and groom then served the cake to the guests. The bride and groom then served the cake to the guests. The bride and groom then served the cake to the guests. The bride and groom then served the cake to the guests.

The bride and groom then served the cake to the guests. The bride and groom then served the cake to the guests. The bride and groom then served the cake to the guests. The bride and groom then served the cake to the guests.

The bride and groom then served the cake to the guests. The bride and groom then served the cake to the guests. The bride and groom then served the cake to the guests. The bride and groom then served the cake to the guests.

The bride and groom then served the cake to the guests. The bride and groom then served the cake to the guests. The bride and groom then served the cake to the guests. The bride and groom then served the cake to the guests.

The bride and groom then served the cake to the guests. The bride and groom then served the cake to the guests. The bride and groom then served the cake to the guests. The bride and groom then served the cake to the guests.

The bride and groom then served the cake to the guests. The bride and groom then served the cake to the guests. The bride and groom then served the cake to the guests. The bride and groom then served the cake to the guests.

The bride and groom then served the cake to the guests. The bride and groom then served the cake to the guests. The bride and groom then served the cake to the guests. The bride and groom then served the cake to the guests.

The bride and groom then served the cake to the guests. The bride and groom then served the cake to the guests. The bride and groom then served the cake to the guests. The bride and groom then served the cake to the guests.

The bride and groom then served the cake to the guests. The bride and groom then served the cake to the guests. The bride and groom then served the cake to the guests. The bride and groom then served the cake to the guests.

The bride and groom then served the cake to the guests. The bride and groom then served the cake to the guests. The bride and groom then served the cake to the guests. The bride and groom then served the cake to the guests.

The bride and groom then served the cake to the guests. The bride and groom then served the cake to the guests. The bride and groom then served the cake to the guests. The bride and groom then served the cake to the guests.

The bride and groom then served the cake to the guests. The bride and groom then served the cake to the guests. The bride and groom then served the cake to the guests. The bride and groom then served the cake to the guests.

The bride and groom then served the cake to the guests. The bride and groom then served the cake to the guests. The bride and groom then served the cake to the guests. The bride and groom then served the cake to the guests.

The bride and groom then served the cake to the guests. The bride and groom then served the cake to the guests. The bride and groom then served the cake to the guests. The bride and groom then served the cake to the guests.

The bride and groom then served the cake to the guests. The bride and groom then served the cake to the guests. The bride and groom then served the cake to the guests. The bride and groom then served the cake to the guests.

The bride and groom then served the cake to the guests. The bride and groom then served the cake to the guests. The bride and groom then served the cake to the guests. The bride and groom then served the cake to the guests.

The bride and groom then served the cake to the guests. The bride and groom then served the cake to the guests. The bride and groom then served the cake to the guests. The bride and groom then served the cake to the guests.

The bride and groom then served the cake to the guests. The bride and groom then served the cake to the guests. The bride and groom then served the cake to the guests. The bride and groom then served the cake to the guests.

The bride and groom then served the cake to the guests. The bride and groom then served the cake to the guests. The bride and groom then served the cake to the guests. The bride and groom then served the cake to the guests.

REGISTRATION NOTICE FOR REGULAR CITY ELECTION MONDAY, DECEMBER 5, 1955

To the Qualified Electors of the CITY OF NEGAUNEE, County of Marquette, State of Michigan:

Notice is hereby given that in conformity with the "Michigan Election Law," if the undersigned Clerk will upon any except Sunday and legal holiday receive at his office at any time of the day or primary election, receive for registration the names of any legal voter in said Township, City or Village not already registered who may APPLY TO ME PERSONALLY for such registration. Provided, however, that I can receive no names for registration during the intervening between the thirtieth day before any regular, special or official primary election and the day of such election.

NOTICE IS HEREBY GIVEN THAT I WILL BE AT MY OFFICE FRIDAY, NOVEMBER 4, 1955—LAST DAY

THE THIRTY-FIRST DAY PRECEDING SAID ELECTION

As provided by Section 10, Chapter 1, Part 5(a), Act No. 306, P. A. 1920, as amended by Act No. 291, Public Acts of 1946 and Act No. 108, Public Acts of 1961.

From 8 o'clock a. m. until 8 o'clock p. m. on said day for the purpose of REVIEWING the REGISTRATION and REGISTERING such of the qualified electors in said TOWNSHIP, CITY or VILLAGE as SHALL PROPERLY apply therefor.

The name of no person but an ACTUAL RESIDENT of the precinct at the time of registration, and entitled under the constitution, if remaining such resident, to vote at the next election, shall be entered in the registration book.

ELECTOR UNABLE TO MAKE PERSONAL APPLICATION, PROCEDURE

SEC. 10. Any elector who is unable to make personal application for registration because of physical disability or absence from the Township, City or Village in which his legal residence is located, may be registered prior to the close of registration by sending to the Clerk a signed request for registration, or by applying in person for transfer. The Clerk shall strike through the last original and duplicate registration cards and returning such registration cards to the Clerk of the Township, City or Village before the close of office hours on the day immediately preceding any election or primary election. The notary public or other officer administering the oath shall sign his name on the card for the signature of the registrant and designate his title.

UNREGISTERED PERSONS NOT ENTITLED TO VOTE

SEC. 1. The inspectors of election at any election or primary election in this State, or in any District, County, Township, City or Village thereof, shall not receive the vote of any person whose name is not in the registration book of the precinct in which he offers to vote, (As provided under Act 108, P.A. 1951)

TRANSFER OF REGISTRATION; APPLICATION, TIME

SEC. 10. Any registered elector may upon change of residence within the Township, City or Village cause his registration to be transferred to his new address by sending to the Clerk a signed request, stating his present address, the date he moved there and the address from which he is being transferred, or by applying in person for transfer. The Clerk shall strike through the last original and duplicate registration cards, and record the new address, precinct and street number in the original and duplicate registration cards, and place the original registration card in proper precinct file. Such transfer shall not be made within the 30 days next preceding any election or primary election, (unless such 30-day shall fall on a Saturday, Sunday, or legal holiday in which event registration shall be accepted during the next full working day), provided that such transfer will permit any person to vote in any Township, City or Village in which he had not resided 30 days next preceding any election or primary election.

TRANSFER OF REGISTRATION ON ELECTION DAY

Sec. 20. Any registered elector who has removed from one election precinct of a Township, City or Village to another election precinct of the same Township, City or Village shall have the right to make application to have his registration transferred on any election or primary election day by exhibiting a request over his or her signature for such transfer and presenting the same to the inspector of election at the precinct in which he is registered. Upon receiving such request the inspector of election in charge of the registration records shall compare the signature thereon with the signature on each such fact upon said request and the applicant for transfer shall then sign the transfer card in the registration records, and the applicant for transfer shall be filed with the Township, City or Village Clerk who shall transfer such voter's registration in accordance with the provisions of this act. The Township, City or Village Clerk who makes the change to show the proper name in the registration records, and it shall not be necessary for the elector to change his registration with respect thereto, in order to be eligible to vote at the regular or special election in the Township, City or Village where he has been changed, such change shall not affect the right of such voter to vote at the election in the Township, City or Village in which he was registered on the day upon proper showing.

JACOB H. ANDERSON, Clerk

PROBATE NOTICE STATE OF MICHIGAN

The Probate Court for the County of Marquette

At a session of said Court, held at the Probate Office in the City of Marquette in the said County on the 13th day of October A.D. 1955.

Present, Hon. Carroll C. Rushton, Judge of Probate.

In the Matter of the Estate of Clifford H. Hansen, Deceased.

Elmer B. Hansen, administrator of said estate having filed in said Court his petition praying for license to sell the interest in said estate in certain real estate heretofore described, for the purpose of distribution.

It is Ordered, That the 25th day of November, A.D. 1955 at 10 o'clock in the forenoon, at said Probate Office, he and is hereby appointed for hearing said petition and that all persons interested in said estate appear before said Court at said time and place to show cause why a license to sell the interest of said estate in said real estate should not be granted.

It is Further Ordered, That public notice thereof be given by publication in any of this order once each week for three successive weeks previous to the date of hearing, in the NEGAUNEE IRON HERALD, a newspaper printed and circulated in said County.

Carroll C. Rushton, Judge of Probate.

A true copy: Elmer B. Hansen, Register of Probate.

Aron Lowenstein, Attorney, Negaunee, Mich.

STATE OF MICHIGAN IN THE PROBATE COURT FOR THE COUNTY OF MARQUETTE

At a session of said Court held at the Probate Office in the City of Marquette in said County on the 13th day of October A.D. 1955.

Present: The Honorable Carroll C. Rushton, Judge of Probate.

In the Matter of the Estate of John Kromek, Deceased.

Lawrence E. Anderson having filed in said Court his final administration account, and his petition praying for the allowance thereof and for the assignment and distribution of the residue of said estate.

It is Ordered that the 25th day of Nov. A.D. 1955, at 10 o'clock in the forenoon, at said Probate Office, he and is hereby appointed for examining and allowing said account and hearing said petition.

It is Further Ordered, That public notice be given by publication of a copy of this order once each week for three consecutive weeks previous to the day of hearing, in the NEGAUNEE IRON HERALD, a newspaper printed and circulated in said County.

Carroll C. Rushton, Judge of Probate.

A true copy: Elmer B. Hansen, Register of Probate.

Aron Lowenstein, Attorney, Negaunee, Mich.

Mrs. S. J. Bessolo Honored At Tea



Honored at a recent tea at the home of Mrs. E. Dana Cory was Mrs. S. J. Bessolo, Negaunee, president elect of the Upper Peninsula District Women's Clubs. She is a past president of the Negaunee Club. From left to right are Mrs. Fred Moulton, treasurer of the Negaunee unit; Mrs. R. E. Hellemann, second vice-president; Mrs. Bessolo, Mrs. Cory, president of the local club, and Mrs. Frank E. Tompkins, director, seated at the table.

Negaunee Woman Named Member of Program Committee of State Unit

Mrs. Ruth Mattson, 512 Bluff street, this week received notification of her appointment by the Michigan Board of Practice of Nursing with headquarters in Lansing to serve as a member of the group's state program.

This is the first appointment of the state level to be made in the Upper Peninsula. Mrs. Mattson is at present secretary of the Marquette-District of the Practical Nurse Association.

She has been active in women's organizations in Negaunee, serving as president of the Abigail Circle of the Immanuel Lutheran

Mrs. Hazel Rosevacre Installed As New Eastern Star Matron

Mrs. Hazel Rosevacre was installed as Worthy Matron of Negaunee Chapter, Order of Eastern Star, in a colorful ceremony held at the Masonic Temple.

Mrs. Margaret Danielson was the installing officer, assisted by the church and secretary of the United Council of Church Women.

Mrs. Lemp Posio, marshal; Mrs. Florence Staples, chaplain; Mrs. Carol Richards, organist; Mrs. Helen Collins, soloist; and Eldred Hooper, guest soloist.

In addition to the worthy matron, the following new officers were installed: Arne Posio, worthy patron; Geneva Huil, associate matron; Myrtle Davis, secretary; Laura Waters, treasurer; Irene Johnson, conductress; Doris Veale, associate conductress; Maude Arscott, chaplain; Dorothy Sivola, marshal; Carol Richards, organist; Lois Adams, Aids; Ruth Apple, Aids; Ruth Ruckel, Aids; Rose Gerold, Martha; Adela Storm, Electra; Charlotte, Holman, warder; Myra Sunco, sentinel.

Home and School Club Organized by St. Paul Parents

Eighty parents attended the organization meeting of the new St. Paul's Home and School Club, held in the school.

Mrs. Quayle made two appointments, designating Mrs. Agnes Greenash as chairman of the nominating committee and Mrs. William Pasch as chairman of its constitution committee.

The Rev. Neil D'Amour, Escanaba, diocesan superintendent of schools, was the speaker. Father D'Amour discussed the purpose of home and school clubs and how they can be of benefit to the pupils, interesting and the parents.

The Rev. Robert J. Corry, pastor of St. Michael's, also addressed the group on the spiritual values of an organization.

There are 350 students in St. Paul's school.

St. Paul Honor Roll Announced for 1st Marking Period

Students on the St. Paul's honor roll for the first term include the following seniors, Julen Dighera, Judith Johnson, Marie Finney, Genevieve Haldin, Catherine Dalus and Margaret Jobs; Juniors, Mary Bereschi, Thomas Sharpen, Dolores Adams and C. A. L. Carlson; sophomores, Karen St. Andre, Doris Milgore, Judith Lian; and Freshmen, Joan Peterson, Lois Gravidini, Lucy Cordeiro, Barbara Leljed, Priscilla Hansen, William D. K. and Barbara Soderberg.

St. Paul's School, The Home and School Club is organized for parents of both the grade and high school students. The next meeting will be held on Nov. 30.



From where I sit... by Joe Marsh

Last Word in Car Machinery

Curly Lawam was first in this area to use one of those roadside vending machines. He's sold milk and eggs to me about a year now, and recommends them highly—but with reservations.

"It's the latest model," says Curly, "built in refrigeration unit—heater—an automatic sign turns-on for night. Takes any combination of coins."

"However," he warned, "those machines aren't cheap to buy... or operate. They run about \$200. If you're not on the main highway like I am—where lots of city

people pass—you'd better stick to the old methods." From where I sit, you have to admire Curly for his pioneering spirit. Of course, there's plenty to be said for those who tend to stick to the old proven methods. People's ideas differ on the subject — on any subject. Like you may always drink butter milk with your meals... while a glass of beer's the "automatic" choice with me.

Joe Marsh

Copyright © 1955 United States Brewers Foundation

OCT. 28 — NOV 18 PROBATE NOTICE STATE OF MICHIGAN

The PROBATE COURT for the County of Marquette.

To The Probate Court for Said County

In the Matter of the Estate of Harlow A. Clark, Mentally Ill.

At a session of said Court, held at the Probate Office in said City of Marquette, this said County on the 24th day of Oct., A.D. 1955.

Present, Hon. Carroll C. Rushon, Judge of Probate.

Robert H. Clark, Alford S. Clark and James W. Clark, guardians of said estate, having on the 24th day of October 1955 filed in said Court their petition praying for license to sell the interest of said estate in certain real estate therein described at public or private sale.

It is Ordered that the 23rd day of Nov., A.D. 1955 at ten o'clock in the forenoon, of said Probate Office, be and is hereby appointed for hearing said petition and that all persons interested in said estate appear before said Court, at said time and place to show cause why a license to sell the interest of said estate in said real estate should not be granted.

It is Further Ordered, That public notice thereof be given under once each week for three successive weeks previous to said day of hearing, in the NEGAUNEE IRON HERALD, a newspaper printed and circulated in said County.

Carroll C. Rushon, Judge of Probate

A true copy: Ella M. Fincknell, Register of Probate

Robert H. Clark, Attorney

VISTA THEATRE

Coming Attractions

For Week Beginning Sunday, Nov. 6

Sunday-Monday

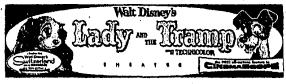


CLARK JANE ROBERT GABLE RUSSELL RYAN THE TALL MEN COLUMBIA PICTURES PRESENTS A COLUMBIA PICTURES PRODUCTION

Wednesday-Thursday



Friday-Saturday



"You ought to see your dentist. Putting it off just because you're short of cash is false economy!"

OUR PERSONAL LOANS TO HELP MEET DOCTORS' AND DENTISTS' BILLS—AND FOR SIMILAR NEEDS—ARE TRULY ECONOMICAL. APPLY FOR QUICK CASH!



THE FIRST NATIONAL BANK OF NEGAUNEE

BUY AND HOLD U. S. SAVINGS BONDS

Board of Supervisors Official Proceedings County of Marquette

Continued From Page Two

FINANCE AND TAXATION COMMITTEE

BUDGET AND TAXES FOR THE YEAR 1955-56
To the Honorable Chairman and Members of
Marquette County Board of Supervisors,
Marquette County, Michigan.

Gentlemen:

Your committee on Finance and Taxation, having had the matter under consideration, respectfully recommends that there be raised by taxation for the current year 1955 the following amounts for the purposes herein set forth:

County Road Tax			\$187,626.31
County Tax		\$170,000.00	\$71,814.12
Social Welfare			
Direct Relief	\$ 81,000.00		
County Parks Fund	119,000.00		
County Airports Fund		22,250.00	
Soldiers' Relief Comm. Fund		15,000.00	
Morgan Heights San. Fund		1,000.00	
General Fund		43,000.00	
Total			294,554.12
Circuit Court	11,920.00	40,200.00	
Justice Court	3,000.00		
Prosecuting Attorney	11,200.00		
Judge of Probate	15,000.00		
Legislative		26,800.00	
Supervisors, Mgrs. & Clerks		13,500.00	
County Clerk		13,300.00	
Finance		13,200.00	
County Treasurer		13,200.00	
Public Safety		52,430.00	
Sheriff's Department	11,000.00		
Jail	31,720.00		
Coroners	2,000.00		
Dog Wardens	500.00		
Contagious Diseases	2,000.00		
County Physician	600.00		
Mine Inspector	4,500.00		
Public Records	5,100.00		
Register of Deeds	8,600.00		
Public Elections	4,700.00		
Public Statistics	500.00		
Public Education		10,930.00	
County School Bldg.		13,250.00	
Public Buildings		13,250.00	
Court House		13,250.00	
General		28,459.12	
County Controller	8,000.00		
Tax Department	4,240.00		
Agric. Agent	5,540.00		
County Tax Comm.	200.00		
Compensation Insurance	1,900.00		
Postage and Exp. Ret.	1,200.00		
Misc. & Contingencies	5,673.13		
Special Appropriations:		36,405.00	
U. P. Development Bureau	500.00		
U. P. Develop. Bur. NMCC	250.00		
U. P. Children's Center	1,500.00		
County Potato Show	200.00		
County Law Library	500.00		
Mtns. Co. Historical Agency	375.00		
4-H Club Agent	2,000.00		
Probation Office-Spec. Appro.	1,080.00		
Equipment Appro.	30,000.00		
Welfare & Relief		60,630.00	
Welfare Agent-Spec. Appro.	1,920.00		
Neglected Children's Bureau	27,300.00		
State Institutions & Pub. Chgs.	30,000.00		
Bureau of Social Aid	100.00		
Veterans Referral Agency	1,670.00		
GRAND TOTAL TAXES			\$759,440.63

MARQUETTE COUNTY RESUME OF CITY AND TOWNSHIP TAXES

CITY OF ISHPEMING					
State Equalized Valuation - \$25,742,848					
County Equalized Valuation - \$28,287,875					
	STATE EQ.	CO. EQ.	CO. EQ.		
	VAL.	RATE VAL.	PER \$1000	PER CENT	
County Tax	140,551.49	5.5231419	5.4000	15.000758	
County Road Tax	49,072.94	1.8349709	2.1000	5.521951	
School Tax	195,626.94	7.4272229	8.5500	39.21912	
School Sinking Fund	17,619.819	7.1769319	2.0000	14.48926	
General Operating	375,755.43	14.6026894	16.0000	50.71107	
Capital Improvements	198,327.82	5.1728025	5.5200	4.78749	
TOTAL TAXES	958,082.83	35.8257230	41.0000	100.00000	

CITY OF MARQUETTE					
State Equalized Valuation - \$25,722,615					
County Equalized Valuation - \$19,555,000					
	STATE EQ.	CO. EQ.	CO. EQ.		
	VAL.	RATE VAL.	PER \$1000	PER CENT	
County Tax	17,072.00	5.5231419	6.0000	15.000758	
County Road Tax	41,992.50	1.8349709	2.1000	5.522175	
City Contingent Tax	2,561.75	3.2011657	1.5000	3.673449	
Library Tax	23,782.50	1.3109694	10.7000	27.731245	
School Tax	258,000.00	10.3861078	11.8820	30.80378	
School Debt Service Tax	119,132.00	5.2427456	6.0000	15.34039	
TOTAL TAXES	766,140.75	31.7171103	38.5880	100.00000	
Rejected County Tax	3.71				
Rejected City & School Tax	109.31				
GRAND TOTAL TAXES	766,319.63				

CITY OF NEGAUNEE					
State Equalized Valuation - \$20,211,075					
County Equalized Valuation - \$20,211,075					
	STATE EQ.	CO. EQ.	CO. EQ.		
	VAL.	RATE VAL.	PER \$1000	PER CENT	
County Tax	120,354.13	5.9231419	6.4000	15.100367	
County Road Tax	42,444.82	1.8349709	2.1000	4.96337	
City Gen. Purpose Tax	411,711.83	17.7029755	20.3700	46.07949	
School Tax	225,225.43	9.6278919	11.0000	25.16656	
School Debt Service Tax	50,529.19	2.1844973	2.5000	5.90044	
TOTAL TAXES	850,355.67	37.9229755	42.3700	100.00000	

CHAMPION TOWNSHIP					
State Equalized Valuation - \$4,804,210					
County Equalized Valuation - \$2,877,625					
	STATE EQ.	CO. EQ.	CO. EQ.		
	VAL.	RATE VAL.	PER \$1000	PER CENT	
County Tax	14,629.56	5.9231419	6.4000	16.232508	
County Road Tax	5,411.75	1.8349709	2.1000	8.90937	
Township Tax	4,894.23	1.6021287	1.9000	7.76885	
School Tax	36,078.35	12.2318730	14.0000	37.57730	
TOTAL TAXES	62,814.11	21.2206785	24.4000	120.00000	
Rejected County Tax	1.13				
Rejected Twp. & School Tax	2,811				
GRAND TOTAL TAXES	62,816.65				

CHOCOLAY TOWNSHIP					
State Equalized Valuation - \$1,252,091					
County Equalized Valuation - \$1,103,400					
	STATE EQ.	CO. EQ.	CO. EQ.		
	VAL.	RATE VAL.	PER \$1000	PER CENT	
County Tax	7,063.24	5.9231419	6.4000	32.00000	
County Road Tax	2,317.26	1.8349709	2.1000	10.50000	
School Tax	7,173.60	5.9768210	8.2000	37.16428	
School Site Bond Tax	5,518.00	4.3888545	5.0000	25.00000	
TOTAL TAXES	22,072.10	17.4759184	20.0000	100.00000	
Rejected County Tax	8.35				
Rejected Twp. & School Tax	10.00				
GRAND TOTAL TAXES	22,093.35				

ELY TOWNSHIP					
State Equalized Valuation - \$4,327,834					
County Equalized Valuation - \$2,931,745					
	STATE EQ.	CO. EQ.	CO. EQ.		
	VAL.	RATE VAL.	PER \$1000	PER CENT	
County Tax	24,203.17	5.9231419	6.4000	22.87143	
County Road Tax	7,941.65	1.8349709	2.1000	7.90000	
Township Tax	3,251.67	0.8727919	1.0000	3.71428	
School Tax	39,708.33	9.1748947	10.5000	37.60000	
School Bonds	20,253.98	6.9093274	8.0000	28.71428	
TOTAL TAXES	105,888.88	24.4837459	25.0000	100.00000	
Rejected County Tax	11.99				
Rejected Twp. & School Tax	29.51				
GRAND TOTAL TAXES	105,928.36				

EWING TOWNSHIP					
State Equalized Valuation - \$345,000					
County Equalized Valuation - \$215,710					
	STATE EQ.	CO. EQ.	CO. EQ.		
	VAL.	RATE VAL.	PER \$1000	PER CENT	
County Tax	1,386.94	5.9231419	6.4000	30.85256	
County Road Tax	455.00	1.8349709	2.1000	10.00228	
School Tax	1,612.66	8.9200000	7.4588	35.52691	
School Debt Service Tax	1,083.55	4.3889246	5.0000	23.87115	
TOTAL TAXES	4,538.14	18.2928774	20.9588	100.00000	

FORSYTH TOWNSHIP					
State Equalized Valuation - \$1,768,010					
County Equalized Valuation - \$1,545,410					
	STATE EQ.	CO. EQ.	CO. EQ.		
	VAL.	RATE VAL.	PER \$1000	PER CENT	
County Tax	3,245.33	5.9231419	6.4000	22.21046	
County Road Tax	1,849.709	1.8349709	2.1000	7.57163	
Township Tax	1,540.41	0.8727919	1.0000	3.47078	
Twp. Debt Service Tax	5,860.00	3.3326908	5.8178	13.24802	
School Tax	17,722.69	9.1748947	10.5000	38.43914	
School Debt Retirement Tax	7,727.05	4.3889246	5.0000	17.33937	
TOTAL TAXES	44,525.24	25.1809749	28.3178	100.00000	

HUMBOLDT TOWNSHIP					
State Equalized Valuation - \$1,941,000					
County Equalized Valuation - \$1,696,062					
	STATE EQ.	CO. EQ.	CO. EQ.		
	VAL.	RATE VAL.	PER \$1000	PER CENT	
County Tax	10,854.73	5.9231419	6.4000	32.00000	
County Road Tax	3,561.71	1.8349709	2.1000	10.50000	
Township Tax	2,544.65	1.3109694	1.5000	7.80000	
School Tax	15,693.32	9.1779503	10.0000	50.00000	
TOTAL TAXES	33,924.50	17.4759185	20.0000	100.00000	
Rejected County Tax	1.48				
Rejected Twp. & School Tax	1.16				
GRAND TOTAL TAXES	33,923.64				

Continued On Page Seven

Board of Supervisors Official Proceedings County of Marquette

Continued From Page Six

SHIPPING TOWNSHIP
State Equalized Valuation - \$1,839,841
County Equalized Valuation - \$1,610,710

	STATE EQ. CO. EQ.		PER CENT	
	VAL.	RATE VAL.		
TAXES	TAX RATE	PER \$1000	PER CENT	
County Tax	10,326.55	5.82921419	6.4000	29.867092
County Road Tax	1,334.00	1.83497809	2.1000	5.920079
Township Tax	1,610.71	0.87379010	1.0000	4.668133
Twp. Debt Service Tax	3,269.00	1.24769772	1.4279	6.068742
School Tax	19,612.29	9.17400297	10.5000	48.001338
TOTAL TAXES	34,514.29	19.72307957	21.4279	100.000000
Rejected County Tax	6.89			
Rejected Twp. & School Tax	10.54			

GRAND TOTAL TAXES \$4,851.63
MARQUETTE TOWNSHIP
State Equalized Valuation - \$2,105,387
County Equalized Valuation - \$1,829,669

	STATE EQ. CO. EQ.		PER CENT	
	VAL.	RATE VAL.		
TAXES	TAX RATE	PER \$1000	PER CENT	
County Tax	11,773.88	5.92321419	6.4000	21.893242
County Road Tax	3,869.30	1.83497809	2.1000	7.179487
School Tax	19,873.09	9.52041907	5.7500	10.628323
School Bonds	27,585.02	13.10090249	15.0000	51.232051
TOTAL TAXES	53,810.29	29.55682346	29.2500	100.000000
Rejected County Tax	34.23			
Rejected Twp. & School Tax	73.32			

GRAND TOTAL TAXES \$3,017.84
MICHIGAMME TOWNSHIP
State Equalized Valuation - \$1,208,154
County Equalized Valuation - \$1,005,484

	STATE EQ. CO. EQ.		PER CENT	
	VAL.	RATE VAL.		
TAXES	TAX RATE	PER \$1000	PER CENT	
County Tax	6,756.38	5.82921419	6.4000	17.550074
County Road Tax	2,216.94	1.83497809	2.1000	5.600377
Township Tax	1,222.74	2.49319027	4.0000	10.781871
School Tax	29,669.83	21.46548769	24.0000	69.307278
TOTAL TAXES	39,165.89	23.41794954	27.1000	100.000000
Rejected County Tax	6.78			
Rejected Twp. & School Tax	18.93			

GRAND TOTAL TAXES 39,180.70
NEGAUNEE TOWNSHIP
State Equalized Valuation - \$1,894,682
County Equalized Valuation - \$1,399,452

	STATE EQ. CO. EQ.		PER CENT	
	VAL.	RATE VAL.		
TAXES	TAX RATE	PER \$1000	PER CENT	
County Tax	8,017.96	5.82921419	6.4000	29.122449
County Road Tax	2,462.21	1.83497809	2.1000	8.971429
Township Tax	1,393.43	0.87379010	1.0000	4.081933
School Tax	20,991.48	13.10698929	15.0000	61.234489
TOTAL TAXES	34,185.08	21.40897777	24.5000	100.000000

GRAND TOTAL TAXES 34,185.08
POWELL TOWNSHIP
State Equalized Valuation - \$1,943,629
County Equalized Valuation - \$1,697,820

	STATE EQ. CO. EQ.		PER CENT	
	VAL.	RATE VAL.		
TAXES	TAX RATE	PER \$1000	PER CENT	
County Tax	10,866.05	5.82921419	6.4000	29.800000
County Road Tax	2,565.49	1.83497809	2.1000	8.400000
Township Tax	3,225.86	1.66021827	1.0000	7.600000
School Tax	24,788.17	12.78746675	14.6000	58.400000
TOTAL TAXES	42,445.59	21.84497730	25.0000	100.000000
Rejected County Tax	14.41			
Rejected Twp. & School Tax	22.28			

GRAND TOTAL TAXES 42,429.76
REPUBLIC TOWNSHIP
State Equalized Valuation - \$1,689,130
County Equalized Valuation - \$1,475,965

	STATE EQ. CO. EQ.		PER CENT	
	VAL.	RATE VAL.		
TAXES	TAX RATE	PER \$1000	PER CENT	
County Tax	9,446.14	5.82921419	6.4000	23.228449
County Road Tax	3,059.52	1.83497809	2.1000	8.971429
Township Tax	1,475.96	0.87379010	1.0000	4.081933
School Tax	22,131.49	13.10698929	15.0000	61.234489
TOTAL TAXES	36,113.12	21.40897777	24.5000	100.000000

GRAND TOTAL TAXES 36,101.29
RICHMOND TOWNSHIP
State Equalized Valuation - \$1,146,408
County Equalized Valuation - \$1,001,720

	STATE EQ. CO. EQ.		PER CENT	
	VAL.	RATE VAL.		
TAXES	TAX RATE	PER \$1000	PER CENT	
County Tax	6,411.07	5.82921419	6.4000	23.203704
County Road Tax	2,103.63	1.83497809	2.1000	7.777778
Township Tax	3,968.75	3.47619146	3.0000	14.444444
School Tax	14,625.28	12.75746675	14.6000	54.074974
TOTAL TAXES	27,048.71	23.89297540	27.0000	100.000000
Rejected County Tax	5.42			
Rejected Twp. & School Tax	11.47			

GRAND TOTAL TAXES 27,031.69

SANDS TOWNSHIP
State Equalized Valuation - \$497,627
County Equalized Valuation - \$39,739

	STATE EQ. CO. EQ.		PER CENT	
	VAL.	RATE VAL.		
TAXES	TAX RATE	PER \$1000	PER CENT	
County Tax	2,555.84	5.92321419	6.4000	37.955638
County Road Tax	839.64	1.83497809	2.1000	9.092099
School Tax	6,896.51	12.75746675	14.6000	63.223643
TOTAL TAXES	9,224.99	20.18475903	23.1000	100.000000
Rejected County Tax	4.25			
Rejected Twp. & School Tax	6.00			

GRAND TOTAL TAXES 9,225.54
SKANDIA TOWNSHIP
State Equalized Valuation - \$541,870
County Equalized Valuation - \$475,485

	STATE EQ. CO. EQ.		PER CENT	
	VAL.	RATE VAL.		
TAXES	TAX RATE	PER \$1000	PER CENT	
County Tax	3,009.30	5.82921419	6.4000	11.690920
County Road Tax	994.32	1.83497809	2.1000	14.000000
School Tax	3,077.85	5.67698410	6.5000	43.333333
TOTAL TAXES	7,102.27	13.10698928	15.0000	100.000000
Rejected County Tax	6.94			
Rejected Twp. & School Tax	4.89			

GRAND TOTAL TAXES 7,114.39
TILDEN TOWNSHIP
State Equalized Valuation - \$3,004,000
County Equalized Valuation - \$2,024,971

	STATE EQ. CO. EQ.		PER CENT	
	VAL.	RATE VAL.		
TAXES	TAX RATE	PER \$1000	PER CENT	
County Tax	14,799.81	5.92321419	6.4000	29.163838
County Road Tax	5,512.44	1.83497809	2.1000	9.561122
Township Tax	4,087.44	1.69018127	1.0000	8.654500
Twp. Debt Service Tax	2,500.00	0.83252024	0.9254	3.234474
School Tax	27,824.09	9.23227038	10.6000	48.282932
TOTAL TAXES	57,824.38	19.18188719	21.9254	100.000000

GRAND TOTAL TAXES 57,824.38
TURIN TOWNSHIP
State Equalized Valuation - \$109,998
County Equalized Valuation - \$109,815

	STATE EQ. CO. EQ.		PER CENT	
	VAL.	RATE VAL.		
TAXES	TAX RATE	PER \$1000	PER CENT	
County Tax	1,084.90	5.92321419	6.4000	14.912281
County Road Tax	355.98	1.83497809	2.1000	14.738842
School Tax	974.71	5.02454478	5.7500	40.350977
TOTAL TAXES	2,415.59	12.45183708	14.2500	100.000000
Rejected County Tax	7.84			
Rejected Twp. & School Tax	6.14			

GRAND TOTAL TAXES 2,428.87
WELLS TOWNSHIP
State Equalized Valuation - \$1,134,617
County Equalized Valuation - \$891,346

	STATE EQ. CO. EQ.		PER CENT	
	VAL.	RATE VAL.		
TAXES	TAX RATE	PER \$1000	PER CENT	
County Tax	6,344.98	5.92321419	6.4000	41.912281
County Road Tax	2,081.81	1.83497809	2.1000	11.952832
Township Tax	2,074.02	2.02137928	3.0000	15.769474
School Tax	7,435.05	6.53432920	7.5000	59.736884
TOTAL TAXES	18,835.48	16.60218270	19.0000	100.000000
Rejected County Tax	6.05			
Rejected Twp. & School Tax	4.83			

GRAND TOTAL TAXES 18,846.34
WEST BRANCH TOWNSHIP
State Equalized Valuation - \$384,847
County Equalized Valuation - \$280,200

	STATE EQ. CO. EQ.		PER CENT	
	VAL.	RATE VAL.		
TAXES	TAX RATE	PER \$1000	PER CENT	
County Tax	2,081.81	1.83497809	2.1000	11.952832
County Road Tax	2,074.02	2.02137928	3.0000	15.769474
School Tax	7,435.05	6.53432920	7.5000	59.736884
TOTAL TAXES	11,622.78	16.60218270	19.0000	100.000000

OCT 28 - NOV 18
PROBATE NOTICE
- STATE OF MICHIGAN -
In The Probate Court For The County of Marquette,
At a session of said Court, held at the Probate Office in the City of Marquette, in said county on the 21st day of October, A.D. 1955.
Present: Hon. Carroll C. Rushon, Judge of Probate.
In the Matter of the Estate of Otto E. Pulkinen, Deceased.
It appearing to the Court that the time for presentation of claims against said estate should be limited, and that a time and place be appointed to receive, examine and adjust all claims and demands against said decedent and before said Court;
It is Ordered, That all of the creditors of said decedent are required to present their claims to said Court at said Probate Office on or before the 23rd day of Dec. A.D. 1955 at 10 o'clock in the forenoon, said time and place being hereby appointed for the examination and adjustment of all claims and demands against said decedent.
It is Further ordered, That Public notice thereof be given by publication of a copy hereof or three successive weeks previous to said day of hearing in the NEGAUNEE IRON HERALD a newspaper printed and circulated in said County.
Carroll C. Rushon,
Judge of Probate.
A true Copy
Ella M. Timmeck,
Register of Probate.

Miner Cage Prospects Depend on Replacements at 2 Spots, Sortal

With three members of his starting quint back from a year ago, and encouraged by the showing to date of other candidates, Harry Sortal, Neagaunee fifth basketball coach this week predicted that if replacements continue to improve, Neagaunee prospects appear fairly bright for the 1955-56 season.

Returning from the quint, that went to the state Class B semifinals last March before losing to River Rouge the Roger Jennings, pivot man, Don Chisler and Bob Herman guards.

Lead via the graduation route were Bill Mitchell, Bill White, Jim Grove and Ed Chisler. Sortal's biggest problem will be replacement of the 6 foot, 3 inch Mitchell, as the "reference" was one of the outstanding rebound men in local cage history.

To fill the gap in the forward line, Sortal is experimenting with Dick Lukkonen, Jim Stomack, who appear to have the basic track on the inside, Hank Jennings, Doug Niemi, Jack Fredericks, Ed Gagnon and Fred Hayes, the latter four members of last year's team. Sophomore candidates are Richie Ellis, Martin Isaacson, Russell Jacks and Dan Johnson.

Jacks and Maki are good prospects and, according to Sortal, "show promise of a fairly experience."

At center, the Neagaunee coach has veteran Roger Jennings, reserve Bob Lailla, and Ed Chisler, who played part of last season; Joe Lutet and Bill Kavin, up from

Joe Lutet and Bill Kavin Show Thrills Large Crowd

In the best basketball attraction seen here since the Neagaunee Athletic Committee began sponsoring special shows at Memorial Gymnasium, "Goes" Tutum and Marcus Heynes led the Harlem Monday night to a 84-72 triumph here Monday night over the New York Olympians.

Tutum, who is known the world over, not only amazed fans with his ball handling wizardry, but kept spectators in an uproar with his antics throughout the game.

In between his clowning and ball-handling demonstrations, the "Goes" found time to register 20 field goals plus a free throw for 41 points which included individual scoring for the night. Outstanding brother Heynes vaulted into the fourth quarter to put on an exhibition of the skill that has brought him a rating as the outstanding dribbler in the nation, and he received his way several times through the entire O'Connell team, finally going in to score on a dagger.

During the first three quarters of the game, it was a nip-and-tuck affair with the Harlem leading at 16 at the end of the first period, and the Magicians trailing three-point lead (41-30) at the intermission.

Board of Supervisors Official Proceedings COUNTY OF MARQUETTE

(Continued From Page 7)

Mr. Shroyer of the Road Commission addressed the Board with reference to federal funds for the construction of the leed airport.

Supervisor Allen moved the Board to pass with the reading of the minutes of the last regular meeting. Supported by Supervisor Altolusso and carried.

A request from Mr. Nyquist, in County Agricultural Agent, for a leave of absence from January 1st to March 22, 1956 to attend Michigan State University was read. No expense to the County will be involved. Mr. Nyquist stated he could complete studies toward his Master's degree.

Supervisor Moeing moved the request be granted. Supported by Supervisor Hamel and carried.

A letter from Mr. Nyquist urging the Board to adopt a resolution asking the Director of the Michigan Department of Agriculture to slaughter all Brucellosis (Bangs) reactor cattle in Marquette County was read.

After some discussion, Supervisor Ewing moved the Board adopt the resolution presented by Mr. Nyquist. Supported by Supervisor Hamel and carried.

A petition signed by 101 citizens and taxpayers of Republic Township urging the Road Commission to make necessary repairs on County Road 401 to permit a black-top surface in the near future was read. Supervisor Carlson moved the petition be referred to the Marquette County Road Commission for study and report back to the Board. Supported by Supervisor Hamel and carried.

Monthly reports of the follow-

ing county departments were read and entered filed by the Chairman;

County Treasurer

Veterans' Referral Agency

County Nurse

Department of Social Welfare

Morgan Heights Sanatorium

County Road Commission

Resolutions from the following county boards of supervisors were read and action was taken as noted:

Manistowic County — Urging membership in the Michigan Institute of Local Government. Referred to the Budget and Executive Committee by the Chairman.

Barry County — Favoring work done by the Michigan Taxpayers Association. Supervisor Larson moved it be referred to the Budget and Executive Committee. Supported by Supervisor Hill and carried.

Geoghe County — Urging an amendment to Sec. 15 (b) of the Compiled Laws of 1954, as amended, to include county agents in the State Retirement System. Ordered filed by the Chairman.

Emont County — Urging the Legislature to adopt legislation to prohibit commercial carriers on the highways from 6:00 A.M. Saturday to 12:00 midnight Sunday. Ordered filed by the Chairman.

Wayne County — Petitioning the Governor to hold a special session of the legislature to provide additional facilities for study and report back to the Board. Supported by Supervisor Hamel and carried.

Michigan Tax Commission's 1941 values. Ordered filed by the Chairman. Mr. Nyquist invited the Board members to the annual potato show Friday and Saturday to be held at the S. & B. depot. There being no further business on motion of Supervisor Hill, supported by Supervisor Hamel and carried, the meeting adjourned until Thursday the 10th day of November, A.D. 1955 at 2:00 o'clock P.M.

Carl W. Corneliuson,
Lloyd Levasseur, Clerk.

Ordered filed by the Chairman, Supervisor Hamel, County — Debaring applicants to the removal of the Operator's and Chauffeur's licenses. Inasmuch as the Sheriff's and Police officers to the Secretary of State, Bob ordered filed by the Chairman.

A request from the Republic Township Board of Education requesting repairs to County Road 601 was read. Inasmuch as the matter has been previously referred to the Marquette County Road Commission, the resolution was referred file.

Three resolutions from the Michigan Association of Supervisors were read and disposed of as follows:

Resolution No. 1 — Recommending that whenever the State hold a special election, any county that the result be submitted to the local supervisor first for study. Ordered filed by the Chairman. The resolution was adopted. Supported by Supervisor Jacks and carried.

Resolution No. 2 — Favoring County Equalization not to exceed 60 per cent of the State Tax Commission's 1941 values. Ordered filed by the Chairman. Mr. Nyquist invited the Board members to the annual potato show Friday and Saturday to be held at the S. & B. depot. There being no further business on motion of Supervisor Hill, supported by Supervisor Hamel and carried, the meeting adjourned until Thursday the 10th day of November, A.D. 1955 at 2:00 o'clock P.M.

Carl W. Corneliuson,
Lloyd Levasseur, Clerk.

We Guarantee Our Watch Repairs
KELLAN JEWELRY

Top Performance

In delivered by Standard Gasoline whether the season because Standard/Oil scientists maintain Constant Climate Control in its manufacture.

Petroleum research is another Standard Service in making better Products. As for Standard White Crown Premium or Standard Red Crown Gasoline.

You'll agree... You Expect more from Standard... and you Get it.

PASCOE'S Standard Service
"TRY OUR SERVICE"
COR. LINCOLN & PIONEER
Phone GR 5-2031

NEGAUNEE HIGH SCHOOL
Policy On Reserved Seat
Basketball Tickets
1955-1956

Tickets will be placed on sale at the school principal's office commencing on Monday, November 14, at 4:00 p. m. No telephone orders will be accepted until Monday, November 21.

All season ticket holders of the 1954-55 season will be issued the same seats if they desire them. Any such reservations not called for by Friday, November 25, will be placed on general sale after that day.

The price of the adult season tickets is \$5.00. Season tickets will be available up to and including the first home game on December 9, 1955.

—HOME SCHEDULE—

- December 9, Friday.....Newberry
- December 10, Saturday.....Sault Ste. Marie
- December 20, Tuesday.....Ontonagon
- January 13, Friday.....Manistowic
- January 20, Friday.....Marquette
- February 3, Friday.....Menominee
- February 4, Saturday.....Stephenson
- February 17, Friday.....Ishpeming

As Your Bird Hunting Companion
TAKE RHINELANDER BEER
SHORTY-12 OZ. CAP-SEALED CANS-PINTS
ALSO SOLD IN THROW-AWAY QUARTS
ON TAP AT YOUR FAVORITE TAVERN
LARSON DISTR., Marquette, Mich.