

Thompson, Michigan

A historical picture of Thompson taken sometime around the late 1800's . It was noted on the back on one copy of this picture that the photographer climbed a tree to get this snapshot. It truly shows that this was a lumbering community and the first order of business was definitely not yardwork.





The Christmas Tree Ship

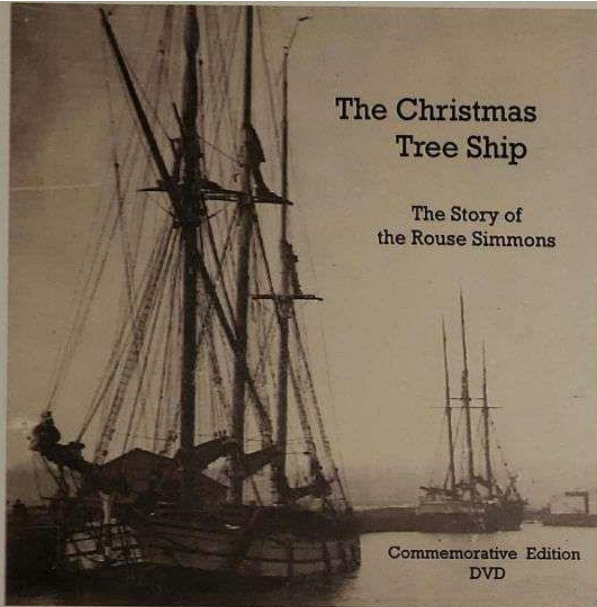
The Christmas Tree Ship was a public relations project of the Milwaukee based brokerage firm, Blunt, Ellis, & Loewi, Inc. This historical documentary was produced by WTMJ-TV (Channel 4) Milwaukee, and was offered for purchase to its regular, local advertisers. At the suggestion of our advertising agency, McDonald, Davis & Associates, BEL purchased exclusive rights to the piece.

For several years at Christmastime, the program would be run on local TV stations in the Midwestern cities where BEL had offices. It played from Wausau to Omaha and Decatur to Des Moines. In addition, twelve copies of the 16mm film were produced for the BEL lending library. Organizations throughout the United States borrowed a film for their meetings year 'round. It was estimated the over 100,000 people saw the movies, and many more thousands viewed it on television.

This DVD was made from my personal copy of the movie. Obviously, the many years of storage degraded the film quality, but the story remains in tact. After the DVD loads in your player push the PLAY button to commence viewing.

Happy Holidays,

Thomas L. Nolan, Jr., EdD.
October, 2005



DVD Cover

Dr. Thomas L. Nolan, Jr., EdD, personally reformatted the original documentary to include a tribute to our Michigan Historical Marker Project. The sale of this DVD helped the Committee raise funds to finance the purchase of the marker.

**This commemorative version
of
The Christmas Tree Ship DVD
would not have been possible
without the generosity of**

Dr. Tom Nolan

**The Thompson Historical Advisory
Committee
is very appreciative of
all of his efforts and expertise.**



LEARNeering, LLC.

Where learning is more than hearing something new.

12922 N. Whitlock Canyon Dr.
Tucson, AZ 85737-1803
520-797-2664
drtomnolan@comcast.net

Thomas L. Nolan, Jr., EdD.

July 18, 2006

Laurie Jasmin, Chair
Thompson Marker Advisory Committee
P. O. Box 174
Manistique, MI 49854

RE: Christmas Tree Ship Marker

Sometimes history gets a life of its own; this has been true for the story of the Rouse Simmons, commonly known as the Christmas Tree Ship. During a violent Lake Michigan storm, and what some might call bad luck, this schooner gained its place in history.

Since being involved with the original movie, created to memorialize the final voyage of the Christmas Tree Ship, it's been apparent to me that the real story is about all the years of success Capt. Herman Schuenemann had delivering Thompson trees to Chicago. He created a tradition.

Hopefully, in the future, visitors to this Marker will remember the story of Thompson's role in making so many Chicago Christmas' a joyous event.

Sincerely,

Thomas L. Nolan, Jr., EdD.

Pioneer Tribune

The voice of the Central U.P. since 1876

Manistique, Michigan

Thursday, August 10, 2006

Dedication of historic marker to be held in Thompson Oct. 21

The Thompson Historical Advisory Committee has announced the dedication date for the new state historical marker which will be installed this fall at the public access site, located just off US-2 in Thompson Township. The event is scheduled for Saturday, Oct. 21, at 2 p.m.

The committee has been working for several years to secure the marker, which will commemorate the history of Thompson on one side and on the other memorialize the township as the last port of call of the ill-fated Rouse Simmons, the "Christmas Tree Ship" that sank in Lake Michigan during a gale in November 1912.

The October ceremony will include the formal dedication of the marker, which is due to arrive by the end of summer. Afterwards, everyone will move to the nearby township hall for refreshments and a program by Rochelle Pennington, author of "The Historic Christmas Tree Ship: A True Story of Faith, Hope and

Love" and "The Christmas Tree Ship: The Story of Captain Santa."

"This is the culmination of many months of research and fund-raising," says Laurie Jasmin, the sixth-generation Thompson resident who chairs the historical committee. "We are all looking forward to this event."

Jasmin notes that installation of the marker is only phase-one of their plans for the access site. Future work will include new interpretive signs and other amenities.

The committee is continuing its fund-raising campaign with the sale of a new commemorative edition of the Christmas Tree Ship DVD. The disc is a digitally re-mastered version

of the 1970s video that was produced by Milwaukee television station WTMJ and Loewi & Co.

The DVDs are available at the Mustard Seed in Manistique, the Thompson Outpost and the gift shop at Palmis Book State Park.

Also available from committee members are the popular 18-month Thompson historical calendars.

For more information about the marker dedication, the committee or the fund-raising program, contact Jasmin at laurie@uplogon.com.

Historic marker to be dedicated on Saturday

Everything is set for this weekend's dedication of the newest Michigan historical marker, commemorating the history of Thompson Township and the ill-fated Rouse Simmons, better known as the Christmas Tree Ship.

Volunteers recently installed the marker at its new home: the Lake Michigan public access site, located off of US-2 between Rogers Park and Little Harbor Road.

The marker contains two separate historical write-ups. On one side it reviews the history of the township. On the other, Thompson is honored as the last port-of-call for the Rouse Simmons, which departed from the harbor on Nov. 22, 1912, bound for Chicago with a load of Christmas trees, and sank the next day near Two Rivers, Wis.

The public is invited to attend the marker dedication, which takes place this Saturday, Oct. 21, at 2 p.m.

Among those slated to speak at the ceremony are Thomas Truscott of the Michigan Historical Commission and local residents Meg Wnuk and Char Crosby, both members of the Thompson Historical Advisory Committee, the volunteer group that spearheaded the marker project.

Music will be provided at the ceremony by bagpiper Stu Haskell.

The dedication is only the

Story of Captain Santa."

Also on hand will be Dr. Thomas Nolan, Glenn Longacre of the National Archives Great Lakes Museum in Chicago, and local resident Eris Webb, whose grandmother was Kate Squires, a well-known Thompson midwife.

Other attendees will include Upper Peninsula musician and author Carl Behrend, who wrote a song about the Rouse Simmons and a recent novel inspired by the vessel's story.

Honored guests will include William Ehling, the grandson of Rouse Simmons captain Hermann Schuenemann; Kent Bellrichard, the diver who found the wreck of the Simmons in 1971; diver Jim Brotz, who restored the wheel of the schooner, which is now on display at the Rogers Street Fishing Museum in Two Rivers, Wis.; diver Steve Radvan; and Peter Scotland of the Wisconsin Marine Historical Society.

The Thompson marker is one of seven being dedicated around the state this fall.

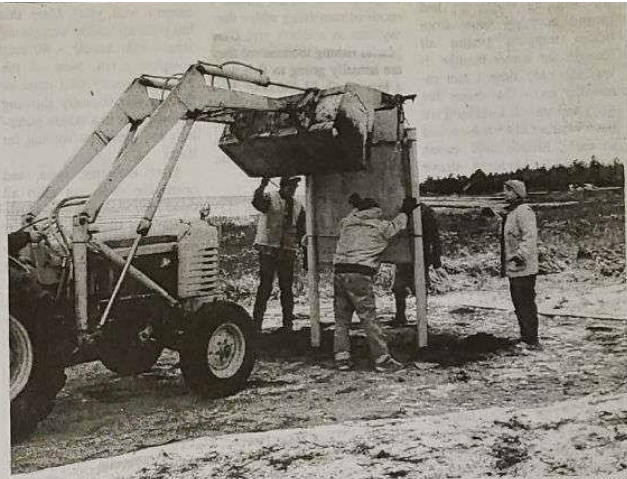
According to the Michigan Department of History, Arts and Libraries, new historical

plaques were dedicated earlier this month in downstate Jackson, Marshall and Macomb County. Others will be unveiled in the coming weeks in the Lower Michigan communities of Hartland, Center Line and Imlay City.

The Thompson Historical Advisory Committee has been working on the marker project for several years, carrying out a fund-raising campaign, gathering all the necessary information, and consulting with the Michigan Historical Commission, Department of Environmental Quality and Department of Natural Resources, ultimately winning approval for the marker and the site.

Monetary donations were received from the Sault Ste. Marie Tribe of Chippewa Indians and a number of local residents. Other contributions included labor and materials for the site preparation and installation.

With the marker in place, the committee hopes to continue raising money and making improvements at the access site, some day adding other interpretive signs and amenities.



Above: volunteers install the new Thompson Township historical marker at the public access site on Lake Michigan. The marker, a project of the Thompson Historical Advisory Committee, describes the history of the township on one side and the story of the famed "Christmas Tree Ship" on the other. The marker, one of seven being unveiled around the state this fall, will be dedicated this Saturday, with a ceremony at the site and a program afterwards at the nearby township hall. A number of dignitaries will be on hand and the public is invited to attend. (Submitted photos)

sta
AF
jou
To
me
wl

W
Pe
bc
m
Ti
Fr
at

Pioneer Tribune

The voice of the Central U.P. since 1876

Week
Friday



High 46
Low 36

AM Clou
PM
Shower

ons, 12 pages

Manistique, Michigan

Thursday, October 19, 2006

**Historical marker
to be dedicated**

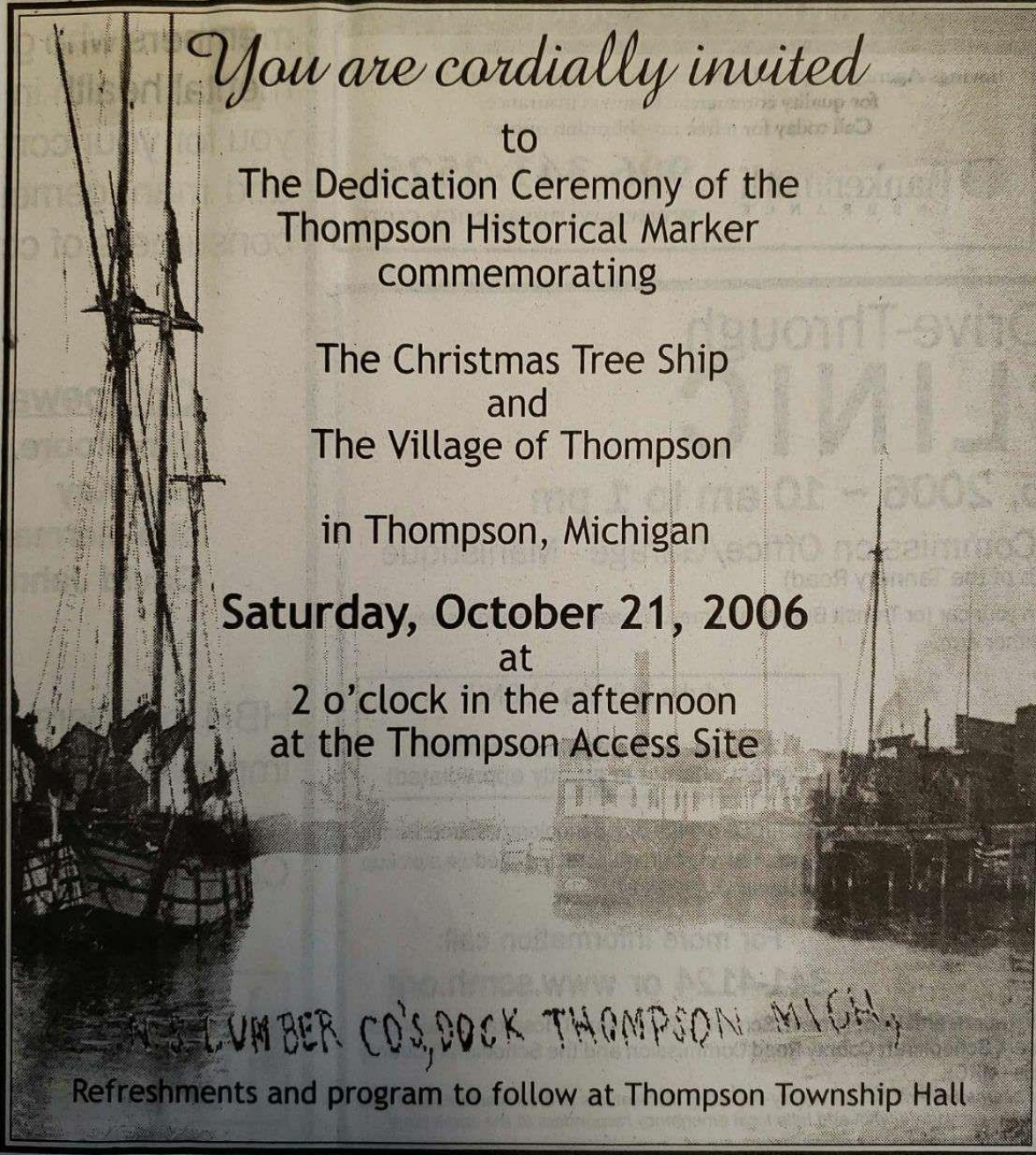
8/14/06
Escaraba
Daily Press

THOMPSON — The Thompson Historical Advisory Committee announced the Michigan State Historical Marker commemorating last port of call of the Christmas Tree Ship and the Village of Thompson will be dedicated on Saturday, Oct. 21, at 2 p.m. with a ceremony at the Thompson Access site off US-2 in Thompson.

Organizers have also planned refreshments and a Christmas Tree Ship program by author Rochelle Pennington at the Thompson township hall immediately following the dedication ceremony.

“This is the culmination of many months of research and fund-raising. We are all looking forward to this event,” said Laurie Jasmin, chair of the committee and sixth generation Thompson resident.

Jasmin also notes that this is only phase one for the marker site. Future plans include the the installation of interpretive signs. Fund-raising efforts will continue with the sale of the commemorative edition of the Christmas Tree Ship DVD. “We are really excited about the release of DVD.” This is a digitally remastered version of the 1970’s video produce by WTMJ -TV in Milwaukee and Loewi & Co. DVDs are available at the Mustard Seed in Manistique, the Thompson Outpost and the gift shop at The Big Spring State Park.” Also available from historical committee members, are the Thompson Historical 18 month calendars.



You are cordially invited

to

The Dedication Ceremony of the
Thompson Historical Marker
commemorating

The Christmas Tree Ship
and
The Village of Thompson

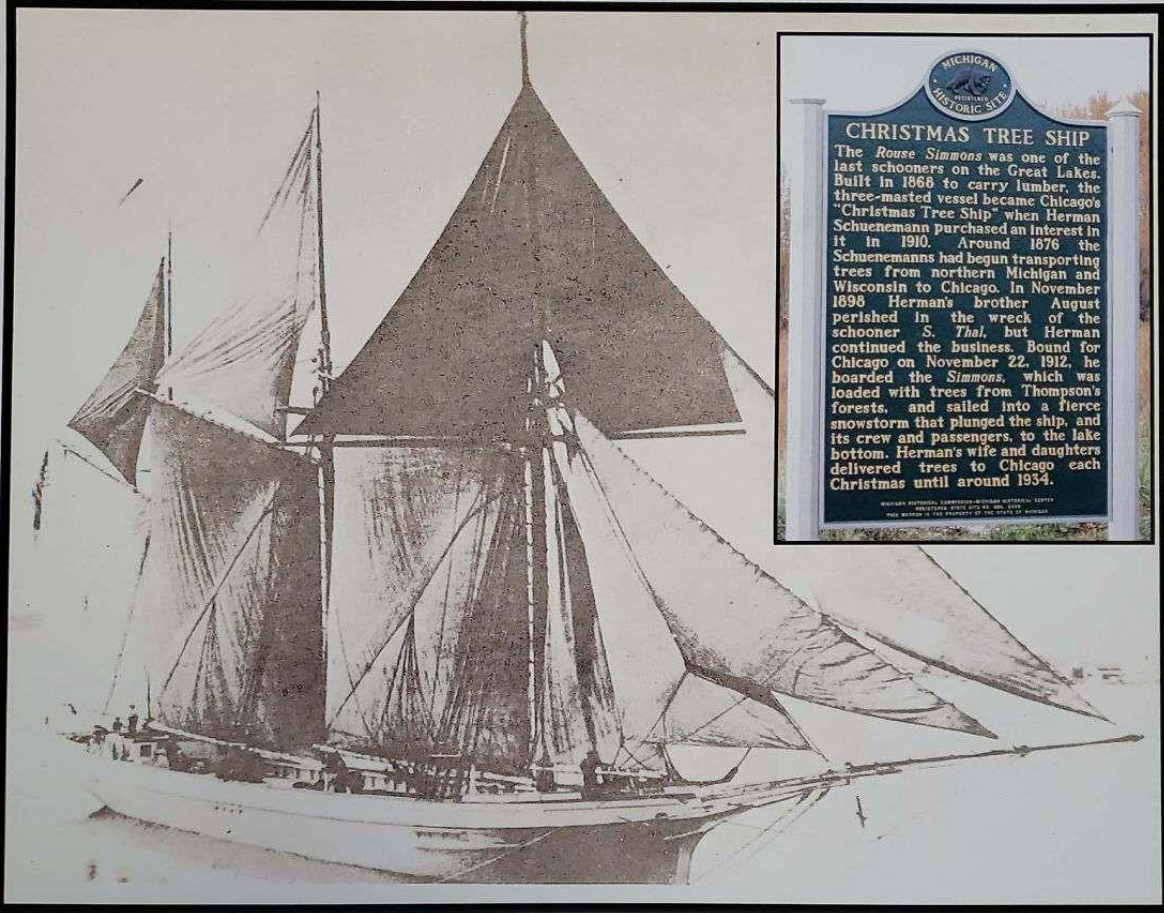
in Thompson, Michigan

Saturday, October 21, 2006

at

2 o'clock in the afternoon
at the Thompson Access Site

Refreshments and program to follow at Thompson Township Hall



MICHIGAN
HISTORIC SITE

CHRISTMAS TREE SHIP

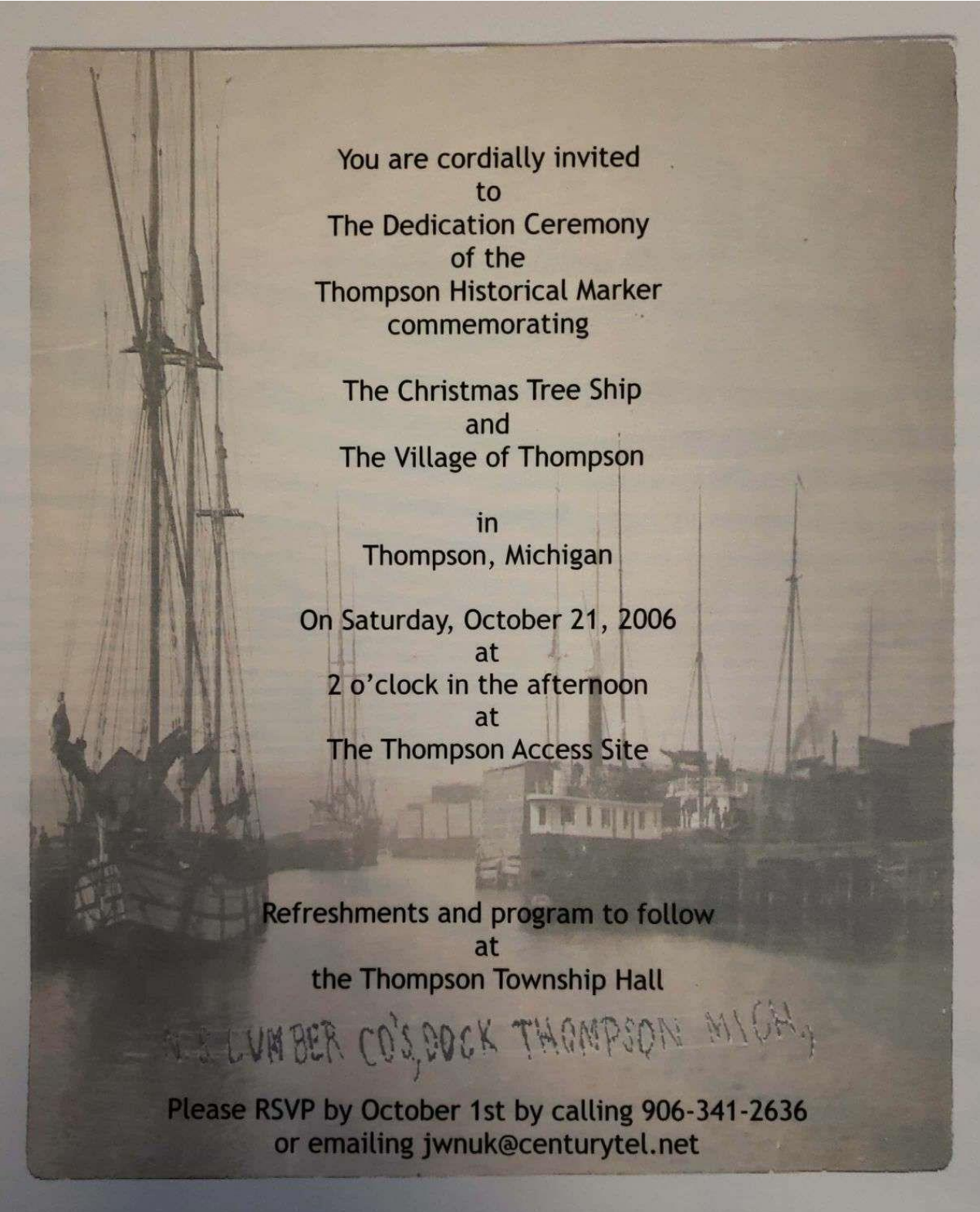
The *Rouse Simmons* was one of the last schooners on the Great Lakes. Built in 1868 to carry lumber, the three-masted vessel became Chicago's "Christmas Tree Ship" when Herman Schuenemann purchased an interest in it in 1910. Around 1870 the Schuenemanns had begun transporting trees from northern Michigan and Wisconsin to Chicago. In November 1898 Herman's brother August perished in the wreck of the schooner *S. Thal*, but Herman continued the business. Bound for Chicago on November 22, 1912, he boarded the *Simmons*, which was loaded with trees from Thompson's forests, and sailed into a fierce snowstorm that plunged the ship, and its crew and passengers, to the lake bottom. Herman's wife and daughters delivered trees to Chicago each Christmas until around 1934.

REPRODUCED BY THE MICHIGAN HISTORICAL SOCIETY, 1997
FOR THE STATE OF MICHIGAN, DEPARTMENT OF CULTURAL AFFAIRS
AND THE MICHIGAN HISTORICAL SOCIETY



THOMPSON

The Delta Lumber Company of Detroit, headed by E. L. Thompson, platted the village of Thompson in 1888. Seven different lumber companies ran the mill in the village. By 1907 the population had reached 900. Three churches and four saloons served the residents, as did a general store, a hotel, and a hospital. Stagecoaches carried passengers twice daily to nearby Manistique, located along the Minneapolis, St. Paul & Sault Ste. Marie Railway. The Thompson Railroad, used primarily for hauling logs to the docks, also took tours to the Big Spring. *Kitchi-ki-ki-pl*. Lumbering activities in Thompson died out quickly, and by 1919 the town's population had dropped to only 150. Thompson was the last port of call for the "Christmas Tree Ship," *House Simmons*, which sank in 1912.



You are cordially invited
to
The Dedication Ceremony
of the
Thompson Historical Marker
commemorating

The Christmas Tree Ship
and
The Village of Thompson

in
Thompson, Michigan

On Saturday, October 21, 2006
at
2 o'clock in the afternoon
at
The Thompson Access Site

Refreshments and program to follow
at
the Thompson Township Hall

W. S. LUMBER CO'S DOCK THOMPSON MICH.

Please RSVP by October 1st by calling 906-341-2636
or emailing jwnuk@centurytel.net

*Dedication
of the
Historical Marker
Commemorating
The Village of Thompson
and
The Christmas Tree Ship*



*Thompson Access Site
Thompson, Michigan
October 21, 2006*

*Thompson, Michigan
Last Port of Call for the
Christmas Tree Ship*

Located on the shores of Lake Michigan, Thompson was once a bustling lumber community that welcomed Captain Herman Schuenemann into their homes & hearts. A Michigan State Historic Marker has been erected to commemorate the Village and the legend of the Rouse Simmons, that left the Thompson docks on November 22, 1912 with a load of local trees bound for Chicago.

Thompson Township is in the central U.P. in beautiful Schoolcraft County. Home to Michigan's largest spring, Kitchi-ti-ki-pi, two State Parks and a State fish hatchery, an ideal place to vacation. Come visit & relax in Thompson and discover the tranquility of the U.P.



Located just off US-2 Highway in Thompson, 6 miles West of Manistique

Our Program was printed and handed out at the dedication ceremony. (Yes, this too was designed by Meg! Such talent!) From start to finish, this project was first class. The next two pages show all four pages of the program.

The post card at the top was actually made by me after the dedication. This was brought to the National Archives Great Lakes Region in Chicago, IL and various stops when I went on a road trip with author, Rochelle Pennington in December 2006.

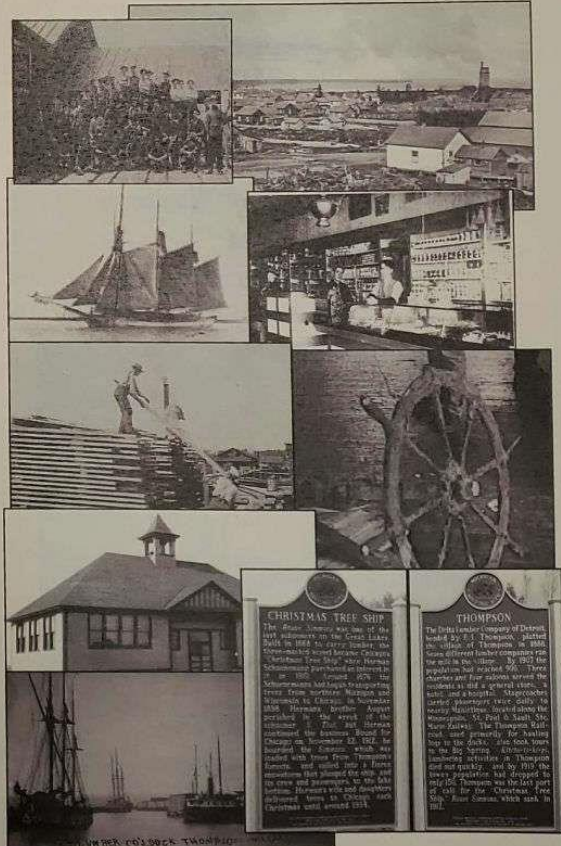
*Dedication
of the
Historical Marker
Commemorating
The Village of Thompson
and
The Christmas Tree Ship*



*Thompson Access Site
Thompson, Michigan
October 21, 2006*

LEFT:
FRONT PAGE

BELOW:
PAGE TWO



CHRISTMAS TREE SHIP
The Great America was one of the last remaining of the Great Lakes. Built in 1884 to carry lumber, the Christmas Tree Ship, also known as the Great America, was built by the Thompson Lumber Company. The ship was built in the village of Thompson, Michigan, and was used to carry lumber from the Great Lakes to the West Coast. The ship was built by the Thompson Lumber Company, and was used to carry lumber from the Great Lakes to the West Coast. The ship was built by the Thompson Lumber Company, and was used to carry lumber from the Great Lakes to the West Coast.

THOMPSON
The Delta Lumber Company of Detroit, Michigan, built the village of Thompson, Michigan, in 1884. The village was built to serve the lumber industry, and was one of the last remaining of the Great Lakes. The village was built by the Thompson Lumber Company, and was used to carry lumber from the Great Lakes to the West Coast. The village was built by the Thompson Lumber Company, and was used to carry lumber from the Great Lakes to the West Coast.

*To accomplish great things, we must dream as well as act.
Anatole France*

Dedication Ceremony

*Saturday, October 21, 2006
2:00 PM*

Welcome

*Meg Whuk
Thompson Historical Advisory Committee*

Introduction of Honored Guests

*Char Crosby
Thompson Historical Advisory Committee*

Amazing Grace

Stu Haskell, Piper

Presentation of Marker

*Mr. Thomas Truscott
Michigan Historic Commission*

Acceptance of Marker

Thompson Historical Advisory Committee

Closing

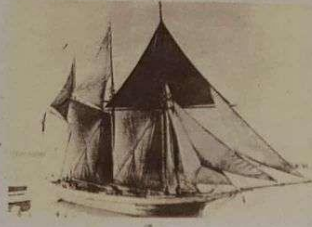
LEFT:
PAGE THREE

*The Thompson Historical
Advisory Committee
would like to thank
all of the
Individuals,
Organizations
and
Companies
who provided
support, encouragement
and
funding.*

*The things that one most wants to do
are the things
that are probably most worth doing.*

Winifred Holtby

RIGHT:
BACK PAGE



The Rouse Simmons

"I am delighted that Captain Herman Schuenemann and his ship the Rouse Simmons are both remembered and honored by the thoughtful people of Thompson, Michigan ninety-four years after his tragic death."

Dr. William E. Ehling
Grandson of the Christmas Tree Ship Captain

"Knowing my great-grandfather as I have come to, he would have been overwhelmed by all this attention. The purpose of the Christmas Tree Ship was not for the glory and recognition but for his true belief that no house should be without a Christmas Tree. I am blessed to be his great-granddaughter and honored that his traditions are still being carried on."

Barbara Ehling
Great-Granddaughter of Captain Herman Schuenemann



Restored Wheel

"Thanks for all who are keeping the spirit of the Schuenemann family and the Rouse Simmons alive and continuing on."

Jim Brotz Family
Mr. Brotz restored the wheel of the Rouse Simmons on display at the Rogers Street Fishing Museum, Two Rivers, Wisconsin.

"Sometimes history gets a life of its own; this has been true for the story of the Rouse Simmons, commonly known as the Christmas Tree Ship. During a violent Lake Michigan storm, and what some might call bad luck, this schooner gained its place in history."

Since being involved with the original movie, created to memorialize the final voyage of the Christmas Tree Ship, it's been apparent to me that the real story is about all the years of success Captain Herman Schuenemann had delivering Thompson trees to Chicago. He created a tradition.

Hopefully, in the future, visitors to this Marker will remember the story of Thompson's role in making so many Chicago Christmas' a joyous event.

Dr. Thomas L. Nolan, Jr. EdD.



Thompson Docks

"Over one hundred years have passed since Captain Herman Schuenemann, skipper of Lake Michigan's legendary Christmas Tree ship, was first welcomed into the port communities of Thompson and Manistique, Michigan."

Today, the fine folks from both of these communities are gathered together to erect a permanent marker honoring Thompson as the Last Port of Call for the Rouse Simmons, and also to pay tribute to Captain Santa's yearly voyages to this place he called home every autumn. Here, the captain harvested both evergreens and friendships.

Congratulations to everyone from the "great, wooded north" who has worked tirelessly to keep the history of the Christmas Tree Ship ever green. I applaud your efforts!"

Roehelle M. Pennington, Author
The Historic Christmas Tree Ship, A True Story of Faith, Hope and Love



“The Christmas tree ship, *Rouse Simmons*, and her captain and crew represent a significant era in Great Lakes maritime history and comprise one of many great local stories contained in the holdings of the National Archives. I join our Great Lakes Regional Archives staff in congratulating the people of Thompson, Michigan, as they commemorate their town’s connection to maritime history, as this legendary vessel’s final port-of-call.”

Allen Weinstein
Archivist of the United States



View of Thompson 1890's



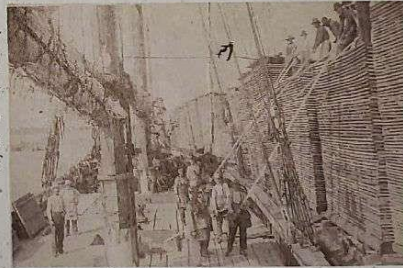
Thompson Lumber Mill

“Thank you for the info, but not sure I can attend. At the age of 82, long trips are not for me, but I will be with you all in spirit. You have done a great job in getting this off the ground: “My Best to you all,

Alex
Florence “Alex” Meron, Author
Thompson Michigan and The People Who Lived It

“Congratulations to you, Laurie, and all the nice folk of Thompson/Manistique on putting the Historical Marker in place. We are not able to come, but want you to know you are in our thoughts. We have given shows and talks to hundreds of folks from here to the U.P. and we always include the Christmas Tree Ship story and the tenacity of Thompson in our small town history accounts.”

Best Wishes,
Gene Scott, Livonia Historical Society
Author, *Michigan Shadow Towns*



Lumber to be Loaded—Thompson docks

“I dove on the Christmas ship last week, stood on the deck and touched the trees. It was a great experience.”

Carl Behrend, Author
The Legend of the Christmas Tree Ship



Corner of Manistique Avenue & Main Street—Thompson, MI

BART STUPAK

1ST DISTRICT, MICHIGAN

2352 RAYBURN HOUSE OFFICE BUILDING
WASHINGTON, DC 20515-2201PHONE: (202) 225-4735
FAX: (202) 225-4744<http://www.house.gov/stupak>
(Email through Website)SCOTT SCHLOEGEL—CHIEF OF STAFF
TOM BALDINI—DISTRICT DIRECTOR*Congress of the United States*
House of Representatives
Washington, DC 20515-2201COMMITTEE:
ENERGY AND COMMERCESUBCOMMITTEES:
OVERSIGHT AND INVESTIGATIONS
RAISING MEMBER
TELECOMMUNICATIONS AND THE INTERNET
ENVIRONMENT AND HAZARDOUS MATERIALSCAUCUS LEADERSHIPS:
LAW ENFORCEMENT CAUCUS, Co-CHAIR
NORTHERN BORDER CAUCUS, Co-CHAIR
RURAL CAUCUS

ASSISTANT WHIP

October 18, 2006

Thompson Historical Advisory Committee
c/o Ms. Meg Wnuik
9477W Carlson Road
Manistique, MI 49854

Dear Friends:

As the State of Michigan recognizes the rich history of the Village of Thompson with an historical marker, allow me to extend my heartfelt congratulations.

The story of the Village of Thompson in many ways exemplifies the rustic, hardworking and pioneering spirit that built Michigan's Upper Peninsula. When Thompson was founded and settled, with the help of the Delta Lumber Company, the U.P. was largely unsettled country. Thus, in many ways, Thompson's growth at the turn of the century paralleled the development of other parts of the U.P. It is therefore fitting that Michigan recognize Thompson with an historical marker.

The *Rouse Simmons*, or the "Christmas Tree Ship," is another part of Michigan history worth remembering. From the many loads of lumber the ship delivered along the Great Lakes, to the Christmas trees the ship would bring to Chicago every holiday season, the *Rouse Simmons* is a colorful part of Great Lakes lore.

I know that it took hard work and perseverance for the Thompson Historical Advisory Committee to obtain the proper permissions from the Department of Natural Resources and the Department of Environmental Quality as well as to raise the funds for the marker. All of you should be commended for committing personal time and effort to the worthwhile cause of forever commemorating the Village of Thompson and the Christmas Tree Ship in Michigan's history with an historical marker.

Congratulations again and thank you for your dedication to this project.

Sincerely,

BART STUPAK
Member of Congress

BTS/ah

PLEASE REPLY TO:

- | | | | | | | |
|--|---|--|---|--|--|--|
| <input type="checkbox"/> 616 SHELDON HOUGHTON, MI 49931 (906) 482-1371 | <input type="checkbox"/> 2 SOUTH 6TH STREET SUITE 3 CRYSTAL FALLS, MI 49920 (906) 875-3751 | <input type="checkbox"/> 1229 WEST WASHINGTON MARQUETTE, MI 49855 (906) 228-3700 | <input type="checkbox"/> 902 LUDINGTON STREET ESCANABA, MI 49829 (906) 786-4504 | <input type="checkbox"/> 200 DIVISION STREET PETOSKEY, MI 49770 (231) 348-0637 | <input type="checkbox"/> 111 EAST CHISHOLM ALPENA, MI 49707 (989) 356-0690 | <input type="checkbox"/> 512 EAST HOUGHTON AVENUE WEST BRANCH, MI 48661 (989) 345-2258 |
|--|---|--|---|--|--|--|

DISTRICT TOLL FREE: 800-950-REPI (7371)

PRINTED ON RECYCLED PAPER



Decorating The Hall
Top Left: Char & Meg working on the tree
Top Right: Laurie uses duct tape to secure a tree to the flag pole



Left: Char Crosby
Bottom: Pam Zorn





Top Left: Char, Meg & Deanna
Right: A truly "old fashion" Christmas Tree



Left: Hand made ornaments by Char complete with a loons feather.





A few photos of the decorated hall.
 The garland on the banister was donated by Rick Cousineau and
 the greens were hand picked by Dad.

Bottom Left; A genuine tree recovered from the wreck of the
 Rouse Simmons. Rochelle had this among her artifacts which
 also included an axe, spittoon, dishes, pipe, and other items.





Pictures of Rochelle's display table and the Christmas Tree. All of the ornaments except for the candy canes were handmade including fruit slices, crocheted angels and snowflakes, bunches of cinnamon sticks & pine cones.



The voice of the Central U.P. since 1878

Mainstique, Michigan

Thursday, October 26, 2006

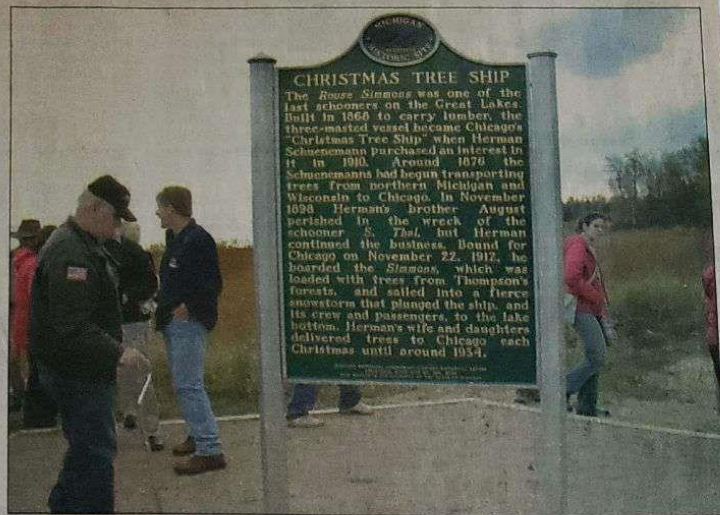
Pioneer Tribune



Nearly 200 people attended last Saturday's dedication of the new state historic marker in Thompson. Located at the public access site on Lake Michigan, the marker discusses the history of the township on one side, and on the other commemorates Thompson as the last port of call of the historic Christmas Tree Ship. After the ceremony, the crowd adjourned to the nearby township hall for a historic and musical program. Above: Meg Wnuk of the Thompson Historical Advisory Committee welcomes the crowd. Below left: Thomas Truscott of the Michigan Historic Commission dedicates the marker as bagpiper Stu Haskell and members of the committee (Deanna Fish, Char Brosby, Laurie Jasmin, Wnuk and Pam Zorn) look on. Below right: True links to the past, Dr. William Ehling and his daughter Barbara pose by the marker. Dr. Ehling is the grandson and Barbara the great-granddaughter of Christmas Ship Captain Herman Schuenemann. (Pioneer-Tribune photos)



A marked occasion



Robb Lucas | Daily Press

A historical marker was dedicated Saturday in Thompson Township on the shore of Lake Michigan off U.S. 2. It commemorates the last port-of-call of the "Christmas Tree Ship."

Christmas tree ship commemorated

By Robb Lucas
news@dailypress.net

MANISTIQUE — A Michigan Historical Marker, commemorating the "Christmas Tree Ship" and Schoolcraft County's Thompson Township now stands on the shore of Lake Michigan off U.S. 2, west of Manistique. The marker was dedicated Saturday in a ceremony hosted by the Thompson Township Historical Advisory Committee.

The schooner Rouse Simmons, better known as the "Christmas Tree Ship," departed Thompson Harbor on Nov. 22, 1912, carrying a load of Michigan Christmas trees bound for Chicago. However, Capt. Herman Schuenemann encountered violent weather and his ship sank, Nov. 23 near the port of Two Rivers, Wis.

"It took us about two years, working with the Michigan Historical Center, to get this marker," said Thompson Township Clerk Laurie Jasmine.

The dedication ceremony featured a number of honored guests, including

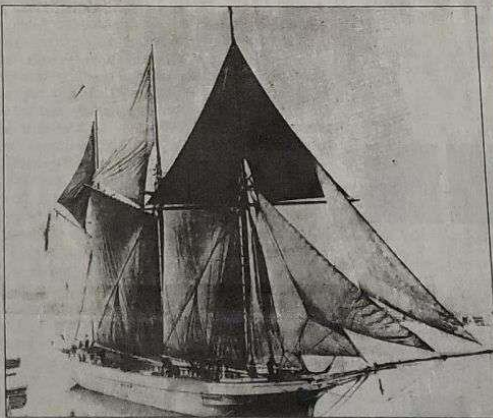


Photo courtesy of Thompson Historical Committee

This photo shows the schooner Rouse Simmons, also known as the "Christmas Tree Ship." The vessel sank while sailing to Chicago with a load of Christmas trees on Nov. 23, 1912.

William Ehling, grandson of Capt. Herman Schuenemann, and Kent Bellrichard, the diver who found the wreck of the Rouse Simmons in 1971.

On the back side of the marker, Thompson Township is honored as the last port-of-call for the Rouse Simmons.

98th Year No. 139

www.dailypress.net

Monday
 October 23, 2006

DAILY PRESS

Your Local News Leader



Left: Over 200 Pine Seedlings were donated by the Wyman State Nursery. Pam & Don Zorn handpicked them, treated the roots and put them in individual bags. They were given out at the dedication in hopes that a future Christmas Tree would be planted.
 Also passed out was a bag of candies for each person. Each bag had a special tag (see below picture) tied on with a ribbon.
 Another special touch by the committee!



Marker Site Photos (Above & Right) taken on morning of the dedication by Dr. Tom Nolan.
 Could we have asked for a more picturesque background?
 How many times did a schooner sail into the Thompson Harbor and see the same view of Lake Michigan? Perhaps even Captain Schuenemann & his crew.



The following photos capture the crowd that joined us for the dedication. So many local people can be recognized as well as many people who traveled from out-of-state.

Middle Photo (LtoR sitting): Author Rochelle Pennington, myself, Mrs. William (Elsie) Ehling, Dr. William Ehling, and Barbara Ehling.





Top: Dr. William Ehling stands up as he is introduced



HISTORICAL MARKER DEDICATION WELCOME

By:

Meg Wnuk

Thompson Historical Advisory Committee

I would like to welcome you to Thompson for this historically important and exciting day. Almost 94 years ago, Captain Herman Schuenemann and the crew of the Rouse Simmons left the port of Thompson, leaving behind many friends and acquaintances, and sailed into the face of a November gale. Lost with all hands off Two Rivers, Wisconsin, this was the last voyage of the Christmas Tree Ship. But we are not here today to commemorate a tragedy. We are here to celebrate the spirit of Captain Schuenemann and the hardworking people of Thompson.

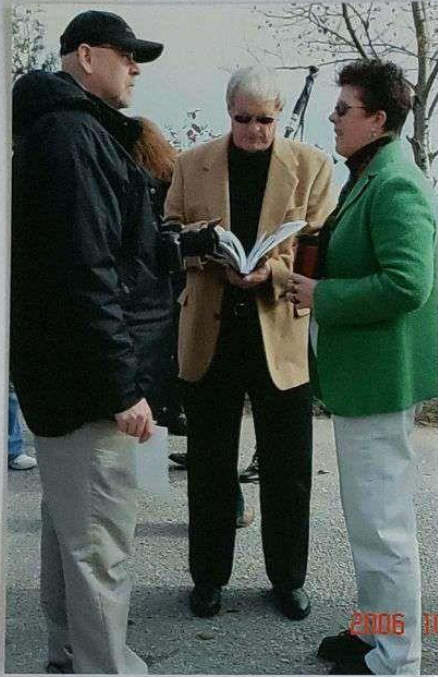
The village of Thompson was a thriving town founded in 1888 around the Delta Lumber Company. The abundant forests of the Upper Peninsula and the natural deep harbor provided the resources needed to operate the lumber mill until the 1920's. But lumber was not the only cargo sent to down lake cities. In the late 1800's two brothers, August and Herman Schuenemann, who were familiar faces to the residents of Thompson, began hauling Christmas trees from the north woods to the German immigrants of Chicago. For many years, the last voyage of the shipping season for the brothers was dedicated to bringing trees and greens to brighten the holiday season for the people of Chicago. This was a labor of love, that Herman carried on after the loss of his brother, August, who perished with his schooner, S. Thal while hauling trees in 1898.

On November 22, 1912, Captain Schuenemann made ready to sail with his cargo of trees and greens from Thompson harbor. Warned of an impending gale, and begged by his friends in town to wait out the weather, Captain Schuenemann set sail determined to deliver his important cargo in time for the holidays. He could not bear to disappoint the people who would be waiting at the Clark Street dock in Chicago.

The residents of Thompson mourned the loss of their friend and his crew. They remembered the captain's generosity and gentle ways and told their memories to the next generations. It is through this oral history and surviving photographs that the inspiration for this historical marker was born. It is fitting that the marker commemorates both the Village of Thompson and the Rouse Simmons, as they were joined together in both their history and the long standing friendships between the residents and Captain Herman Schuenemann.

Today, the friendships created long ago have come full circle. Once again the residents of Thompson have joined together with the many people involved with the Rouse Simmons. Without their help and expertise we would not be here today dedicating this marker. There is one more way in which the circle has been completed, this too was a labor of love.

I would like to present Char Crosby who will be introducing our honored guests.



Top Left: (LtoR): Paul Olson, Editor of Manistique Pioneer Tribune; Thomas Truscott, Michigan Historic Commission & Meg Wnuk

Meg kicked off the dedication with a speech that brought tears to my eyes each time I heard it. It was a beautiful speech that tied together the history of Thompson with the story of the Rouse Simmons.

Introduction of Honored Guests
By:
Char Crosby
Thompson Historical Advisory Committee

Several honored guests have traveled great distances to celebrate this special occasion with us. It is my great pleasure to introduce them.

We are thrilled that the Schuenemann family is able to share in this event – Captain Schuenemann’s grandson, Dr. William Ehling and his wife Elsie from Chicago and the captain’s great granddaughter, Barbara Ehling, also from Chicago.

WTMJ in Milwaukee originally produced a film documenting the story and discovery of the wreckage of the *Rouse Simmons*. A gentleman whose company bought the rights to the film has traveled from Arizona to join us today – Dr. Thomas Nolan. Dr. Nolan has generously made that account available to all of us on DVD, copies of which are at the Thompson Township Hall.

Glen Longacre from the National Archives of Maritime History, Great Lakes Region Museum of Chicago.

Jim Brotz, a diver who has explored the ship. Mr. Brotz has restored the wheel from the *Rouse Simmons* which is now on display at the Rogers Street Fishing Museum in Two Rivers, Wisconsin.

Peter Scotland from the Wisconsin Marine Historical Society in Milwaukee. Mr. Scotland was very helpful in providing information about the *Rouse Simmons*.

Author Rochelle Pennington from West Bend, WI. Rochelle not only wrote *The Historic Christmas Tree Ship*, but also provided our committee with valuable historical data and encouragement to press forward with this endeavor. After the dedication Rochelle will present a program you won’t want to miss.

Thomas Truscott from the Michigan Historic Committee in Lansing. In a few moments, Mr. Truscott will dedicate this marker.

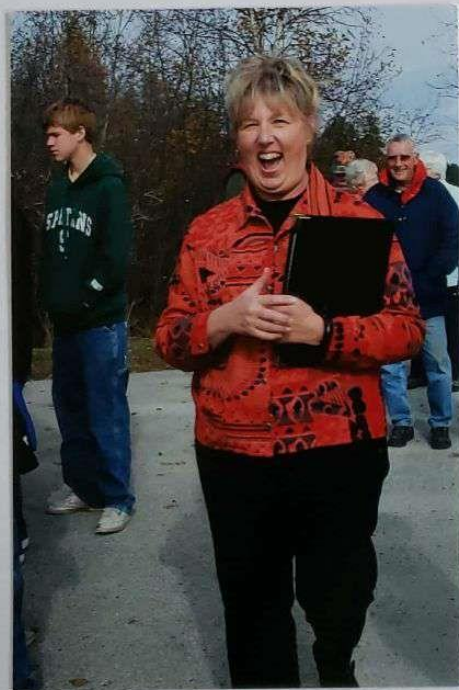
But before that happens, two more very special people need to be introduced. They are responsible for keeping the local story of the Christmas Tree Ship alive - lifelong residents of Thompson and descendants of the Captain’s friend, Mr. Wayne Stanley and his daughter, Laurie Jasmin.

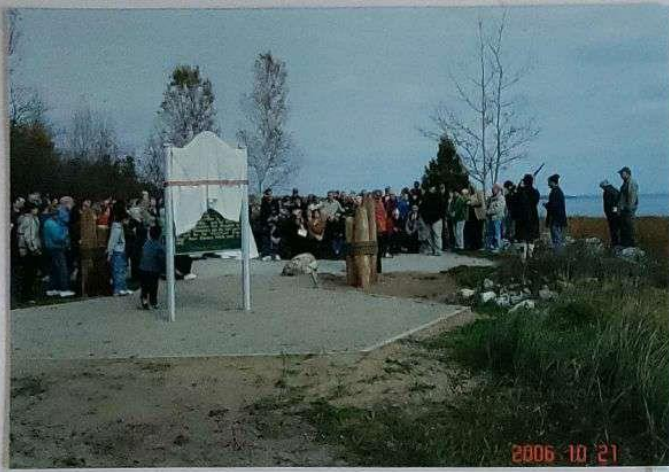
Many people have done much to make today possible. Thank you all.

As bagpiper Stu Haskell pipes *Amazing Grace*, gaze along this stretch of Lake Michigan shoreline and imagine how Thompson Harbor must have looked all those many long years ago.



Char Crosby was up next and introduced our honored guests. She did an excellent job, of course. A copy of her speech is on the preceding page. A round of applause followed the introduction of each person. What a fantastic lady & friend.





Dad took several photos of the crowd during the introductions and tried to capture just how many people were there.

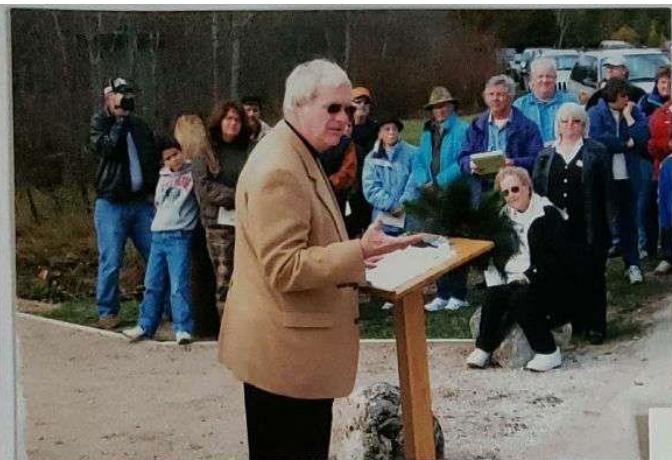






Piper Stuart Haskell & his wife Mickey traveled from St. Claire, Michigan to put a very unique and classy touch to our day.
"Stu" is the brother-in-law of Jody & Meg Wnuk

This photos captures Stu, in full uniform, as he played Amazing Grace during the ceremony. Goosebumps galore!!!



Thomas Truscott, Member of the Michigan Historic Commission, dedicates the new marker

Middle: Mr. Truscott delivers his speech while Committee Members (LtoR) Deanna Fish, Char Crosby, myself, & Meg Wnuk look on.

Bottom: Mr. Truscott talks about the historical marker book written by Laura Ashlee. Committee Members: Deanna, Char, me, Meg & Pam with Piper Stuart Haskell behind.





Thomas Truscott & his wife, Joyce traveled from Lansing and he did a great job. Great sense of humor!



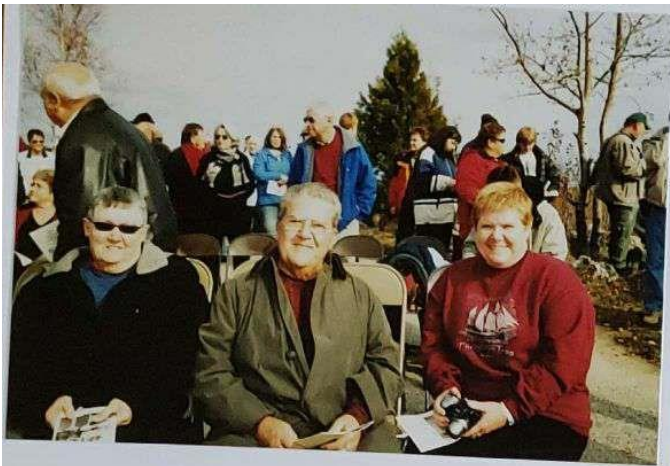


Top Left: Meg & Pam "cut the ribbon" to unveil our sign

Middle Right: Of course, the sheet got hung up on the top of the post and wouldn't come down!

Bottom Left: Mr. Truscott reads each side of the marker and we all get a huge laugh out of his pronunciation of Kitchi-ti-ki-pi! He said "I knew I would butcher that one!". It was great.





Top Left: (LtoR) Elsie & Dr. William Ehling, Barbara Ehling
Middle Right: (LtoR) Tom Arnold, Kirk Stanley, Mike Boudreau & Wayne Stanley
Bottom Left: Mickey Haskell, Jody Wnuk & Wayne Stanley
Bottom Right: Bob Whinnen, Kathy Stanley & Janet Whinnen

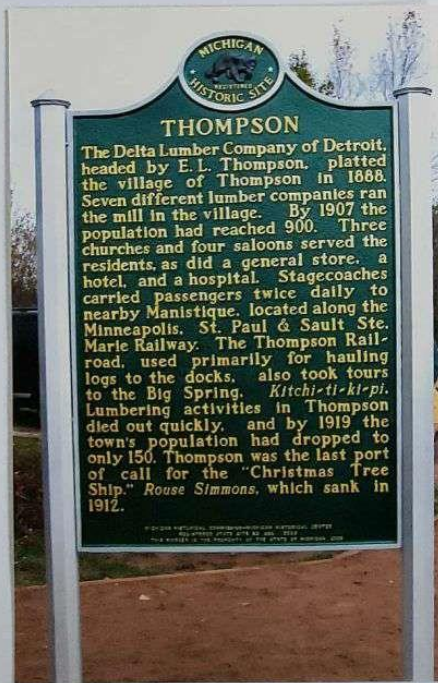




Top Left (LtoR):
Maxine Popour,
Shirley Stanley &
Peggi Arnold



Top Right:
Shirley Stanley
talks to Glenn
Longacre





Top Left: Dr. William Ehling, daughter Barbara and the 4th Grade class of Big Bay de Noc School. The class project was a story of the Christmas Tree Ship. Teacher Gloria Haindl laminated each of the stories and lent them to the Committee to display at the hall for the dedication. They were very special and the Ehlings' were very touched by this gesture. (Barbara Ehling is a teacher so this really meant a lot to her)

CS Scanned with CamScanner



Top Left Dr. William Ehling & daughter Barbara



Top Left Dr. William Ehling & daughter Barbara

Top Right: Dr. Tom Nolan & Jim Brotz

Bottom Left: Stuart Haskell

Bottom Left: Jim & Tom

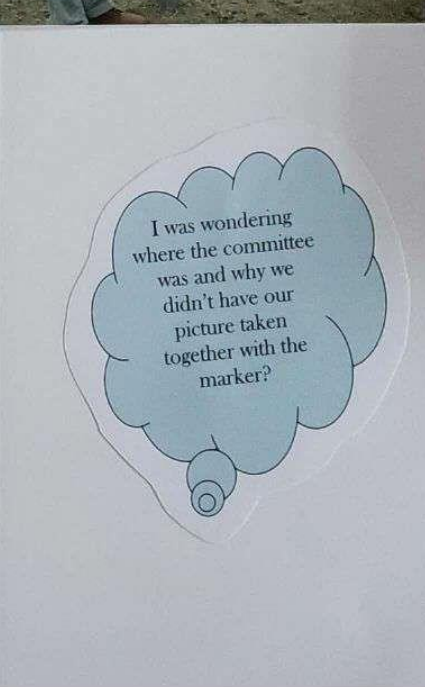




Top Left:
Charlene Crosby
Thompson Historic
Advisory Committee

Top Right:
Dr. Thomas Nolan

Bottom:
Rochelle Pennington, Author
The Historic Christmas Tree Ship



I was wondering
where the committee
was and why we
didn't have our
picture taken
together with the
marker?



Top Left : Stuart Haskell played on the porch of the township hall after the dedication

Top Right: Glen Longacre, National Archives, Chicago

The Township Hall never looked so good!





Top Left:
Charlene Crosby & Maddie
Longacre become good
friends!

Top Right: Someone
talked me into a photo!



Left: Rochelle Pennington, Maddie & Glen Longacre
Right: Charlene Crosby & Rochelle Pennington





Top Left (LtoR) Me, Maddie Longacre, Rochelle Pennington, Dorothy Rochefort & Barbara Ehling

Below: Rochelle autographs a book & Barbara Ehling



Above: Rochelle Pennington & Stuart Haskell

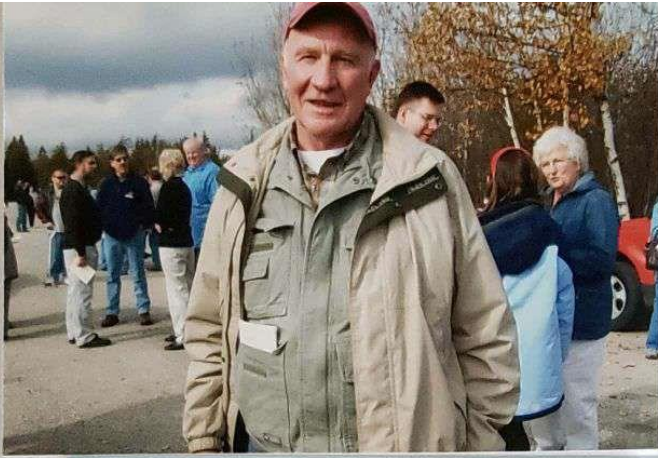
Right: Prior to the program, Rochelle autographs a few books



This picture was given to me by Mr. Joseph Robitaille of Escanaba, Michigan. He owns this hand-made replica of the Rouse Simmons and it has been in his family since the early 1900's. The sails are the original material. Mr. Robitaille stated that this model will be donated to a local museum "when he is through with it". Mr. Robitaille was also present at the marker dedication.



ROUSE SIMMONS



Left: Mr. Jim Brotz at the marker dedication. Mr. Brotz is a diver who is very familiar with the Rouse Simmons. He restored the wheel of the schooner that is on display at the Rogers Street Fishing Museum in Two Rivers, Wisconsin and dived the wreck approximately 60 times.

Bottom: Mr. Brotz gave me a picture of the model that he built of the Rouse Simmons. I can't imagine the hours that went into this project and the detail is fantastic.





The two cakes for the dedication. Meg laid out the pictures so that we paid tribute to both sides of the marker and Jack's SuperValu made the cakes.

Bottom Left: Dr. William Ehling did a short speech during the program thanking the committee, township board and members of the community for the honor given toward him and his family.





October 21, 2006
Christmas Tree Sign Dedication
Thompson, Michigan

The narrative below was a speech given by Mrs. Eris Webb of Manistique, Michigan.

"Thompson in the early days after the lumber business boom became mainly a farming community. Most were run by large families with lots of children. My maternal grandmother, Kate Squires, was a valiant woman, and a proud Native American. She served as Thompson Township Treasurer for many years. She was a nurse/midwife who brought more than 300 babies into the world. She often accompanied Dr. Tucker on many of his calls in the area. She walked long distances in all kinds of weather to help those in need of medical care. Many residents couldn't afford to call the doctor but knew they could depend on Kate. She was a strong woman who knew much about Native American herbs and remedies. One winter evening while out on an errand of mercy, Grandma came upon an old woman known as Squaw Mary, apparently sleeping in a snow bank. Since Squaw Mary was known to be fond of "firewater", it was assumed she was not frozen there, but merely sleeping, however, she was very cold. Grandma took her in and gave her hot soup and tea and Mary thawed out nicely. Since she was certain that Kate had saved her life and in gratitude, gave her the secret recipe for the famous "cedar poultice" for which Kate became noted. The poultices affected many known healings, many overnight."

"Kate died too soon in 1942 at the age of 67. She is an unforgettable person and a role model for me. There were always lots of friends around her table and she was the most hospitable person I have ever known. In those days, on many weekends, there were square dances at the Town Hall and Kate played the piano and my Grandfather Hiram, played the violin and sometimes Uncle John called the squares. All of us children loved the square dances because we were sometimes allowed to join in the dancing. The adult dancers would pick us up and spin us around until we were perpendicular to the floor! It was good fun and we felt all grown up!"

Since this dedication was about the people and history of the Village and township of Thompson, we were very pleased when Eris Webb offered to speak about her family history.

As always, she was gracious and even followed up with a very nice thank you letter in the Pioneer Tribune.

Letter to the Editor:

Re: the Thompson sign dedication ceremony on Oct. 21.

The ceremony at the fishing site and the events following at the Thompson Township Fire Hall and Town Hall were very impressive. The Historical Committee did a superb job. The decorations were lovely and very appropriate. The participants were prepared to be interesting and informative.

I was very proud to have been a native of the little village I have loved all my life. It was a wonderful place to live. It was an honor for me to have been invited to share some thoughts of my maternal grandmother, Kate Squires, with the assembly.

Thank you, Laurie, Meg, Char, Pam, Robyn, Deanna and Wayne. It was a lovely afternoon and a job extremely well done!

In Loving Memory of



Eris D. Webb

July 9, 1923—September 30, 2013

*O Divine Master, grant that I may not so much seek to be consoled as to console;
to be understood as to understand;
to be loved as to love.*

*For it is in giving that we receive;
it is in pardoning that we are pardoned;
and it is in dying that we are
born to eternal life.*





Top Left: Rochelle holds up the actual tree recovered from the Rouse Simmons wreck. This is part of her collection of artifacts

Right: Rochelle answers questions from the audience



Left: Carl Behrend, Author of The Legend of the Christmas Ship & Folk Singer, starts the program with his song on the Christmas Ship along with several other maritime songs.



Guests

Thompson Historical Marker Dedication

October 21st, 2006

| Name & Affiliation | Address | Comments |
|-------------------------|---|----------------------|
| William C. Melling, MD | 501 W. Standard Street, St. | Outstanding |
| Jim Brody | 3839 S. 10 th St. Sheboygan, WI. | " |
| Norma R. Lindsey | 1422 Northfield Lane Park, Se. Coll. W. | |
| Judy Walden | 531 Arbutus Manistique MI 49854 | |
| Louie Laird | 14W Poupour Rd COOKS 49817 | |
| Anna B. Jozowski | 711 River Lane Lane Park, Se. + Latta, Me. P.O. Box 71, 49852 | |
| Sammy + Catherine Voss | 1385 S. STATE Hwy M-149 Manistique Mich | |
| The Carlsons | 6295 State Hwy M/49 Thompson, MI 49855 | |
| Judith L. McClure | 6000 Beagle White City, OR | Magnificent! |
| John + Peggy Ormold | 132 Chippewa Manistique | |
| Judy and Bruce Goodbar | 2020-31st Rock Island IL | Wonderful Dedication |
| Stuart + Hickey Haskell | 270 Richman Rd St Charles MI | great job |
| Wendell Green | 3544 Tankard Trail, Lockport, Ill 61102 | |

Guests

Thompson Historical Marker Dedication
October 21st, 2006

| Name & Affiliation | Address | Comments |
|---|----------------------------|---|
| Jan Jeffcoat | 711 Oak St Manistiqu | Great Tribute |
| Bill & Nancy Longmeyer | Thompson | Wonderful program! |
| Ro LaPlante | Thompson | "Job well Done!" |
| Marilyn Fischer | Gulliver | Everything was beautiful |
| Avonda Rehs | Gulliver | " |
| Barbara Ehling | 310 Bay St. Atrator, IL | Thank you for preserving the memory of my great grandpa who lived |
| Jim & Shuleep Lamberton | Walled Lake, Gulliver, MI | |
| Bill & Janice Short | Thompson | very well done! |
| Karen Klaus | Cooks | what a "great" day |
| Bill & Beth Malloch | 553 N River Road Mstg. | Superb(!) job |
| Tom & Joyce Tufell | 8918 W Thompson St | |
| Vicki Denwiddie | 125 S. First St manistique | |
| Sally Senear ^{Aigance Senear} Bobby & Danny Brodock | 10910 W Davidson Rd Cooks | Wonderful |

Guests

Thompson Historical Marker Dedication
October 21st, 2008

| Name & Affiliation | Address | Comments |
|---------------------------------|---------------------------------------|---------------------|
| Stu & Mickey Haskell | 270 Richman Rd St. Clair M. 48079 | Nice Ceremony |
| Alison Johnson | 9009 EE 25th Rd Rapid River, MI 49878 | Beautiful Ceremony |
| JSTHRU 2 JAMMA GILLESPIE & BOYS | 4472 CORP 483 FAYETTE MI | |
| Thomas L. Nolan Jr | Tecumseh, MI | |
| Deb LeBlanc | 11484W George St. Manistique, MI | FANTASTIC PROGRAM!! |
| CDR L.R. Brumby USN Ret. | 9529 LURA Rapid River MI. | |
| George E Dee Fish | 1820S LITTLE HARBOR THOMPSON MI. | |
| Margie Hollans | 11528W George St Manistique MI | |
| Dan McLeod | 1419S Andersen Rd Manistique | Very Cool!!! |
| Robert Dyer | 1419S ANDERSEN RD (Auburn) | |
| Ernie Kolan | 3054 Woodland Sh. Trail | Thompson |
| Chris Allen | 3064 Woodland Sh. | Thompson |
| Viola Jester | 7494 00.25th. Garden | |

Guests

Thompson Historical Marker Dedication
October 21st, 2006

| Name & Affiliation | Address | Comments |
|---------------------------|---------------------------|--------------|
| Glenn Longacre + Madeline | National Archives Chicago | Wonderful! |
| MIKE SAWYER | 258 N. 5TH MTO | |
| BECCA JENSEN | | |
| Katey Jensen | 8893 W Main Mtz M. | Excellent! |
| Chad Crosby | 3256 Whitepine Dr. Mtz. | |
| JODY & MEG WINK | 9477W CARLSON RD. | THOMPSON |
| Wayne + Shirley Stanley | Thompson | a great day! |
| Maxine Popour | Manistique | |
| Ro Laplante | Thompson | |
| Ruf + Judy Slingsby | Thompson | Great! |

Hi Laurie, I just wanted you and your group to know what an outstanding job on the entire program last Saturday. From the early invitations, the follow-up emails, the wording on the historic site sign, the fresh wreaths, roping, Christmas trees, and boughs, your cakes, refreshment, beverages, decorative tables, choice of speakers, bags of candy, wrapped individual Christmas trees, choice of music and bag pipes, tree decorations, programs, honored guest's, historic photo's and the Rochelle Pennington program....to the very end....you showed extremely good taste, cheerfulness, quality work, and a job well down.....we salute your program and excellent work! Marilyn Fischer and the Gulliver Historical Society

From: "Glenn Longacre" <glenn.longacrev@nara.gov>
Subject: Re: Thompson Marker
Date: Wed, October 25, 2006 8:46 am
To: "Laurie Jasmin" <laurie@uplogon.com>

Hi Laurie!

Greetings. Thanks for the wonderful time in Thompson. Maddie and I had a great time. I'm trying to attach some photos from our trip. I hope they make it.

Glenn

Dear Laurie,

Yesterday was a joy. The interest and support from the local people amazed me. They filled that access site with their cars, vans and trucks - the likes of which hasn't been seen for years. They arrived in their jeans, jackets, vests, caps, scarves and gloves reflecting the honest, unpretentious, hardworking folk they are. I was so moved by them and their pride in the township. Our honored guests could not have been more charming. Hugging the Ehlings was like pinching a little piece of history. Of course, Rochelle lends grace to any gathering. I will forever hear the bagpipes when I stop by the marker. How fortuitous the sun shone during those brief moments of our dedication - almost like a blessing.

It has been my great pleasure to be a part of this project. Seeing you beam yesterday and the quiet dignity of your dad touched my heart. We will ever remember the emotions and fulfillment of yesterday. Thank you for allowing me to share your dream.

Love and friendship,

Char

Dear Laurie,

Just a quick note to let you know what a wonderful job you did (realizing of course that you had some help) putting together the program for our new historical marker. The unveiling was done with terrific taste, not too long but just perfect! And can you believe the crowd? Wow!! I really enjoyed meeting Rochelle and bought one of her books, autographed of course. In fact Uncle Tom took it home to read it first, what a pleasant person she is & what a nice donation to help continue your work. I use the term "your" because you were the first part of putting this together - your dream.

When I talked to Meg this morning she mentioned the man who is in charge of these historical markers said it was the nicest reception by far he had attended. Doesn't that make you proud? If it doesn't, it should.

Congratulations to you, your board for the nice reception at the hall and of course the members of the historical group.

Aunt Peggi



Hi,

The return was uneventful until I arrived home! It didn't take too long for everyone to get the story as I seemingly went on and on about all the events and the many wonderful people I was honored to meet.

I don't think I can put into words the extent of my appreciation for being a part of the celebration. You all did so much... and it shows.

Thanks to you Laurie, the committee, and to your Dad as it certainly was his day too

Tom

Thomas L. Nolan, Jr., EdD.
12922 N. Whitlock Canyon Dr.
Oro Valley, AZ 85755
520-797-2664

From: "wdbn1" <bwoodburn1@mchsi.com>
To: "Laurie Jasmin" <laurie@uplogon.com>
Sent: Wednesday, November 01, 2006 9:08 AM
Subject: dedication

Hi Laurie,

Sorry I didn't get back to you sooner. Judy and I wanted to let you know that we both enjoyed the dedication ceremony very much. All of it was wonderful, the ceremony at the monuments, the food, seeing Rochelle again and having her sign the books for our grandchildren to come, even the weather co-operated for the moment! You can certainly be very proud of what has been accomplished!

Of course, it was hard for us to leave to come home again, but someday, we'll be staying.

See you later,
Thanks again,
Bruce and Judy Woodburn

Dear Laurie,
Words alone cannot express the gratitude I have for you & your committee for all the work you did in getting the Simpson Market.
It was a great day and I was honored to have been a part of it.
Thank you for the "goodie" bag and your gracious hospitality. I hope to

See you in December when Rochelle comes to visit.
Until then enjoy the pictures & take care.
Baird
P

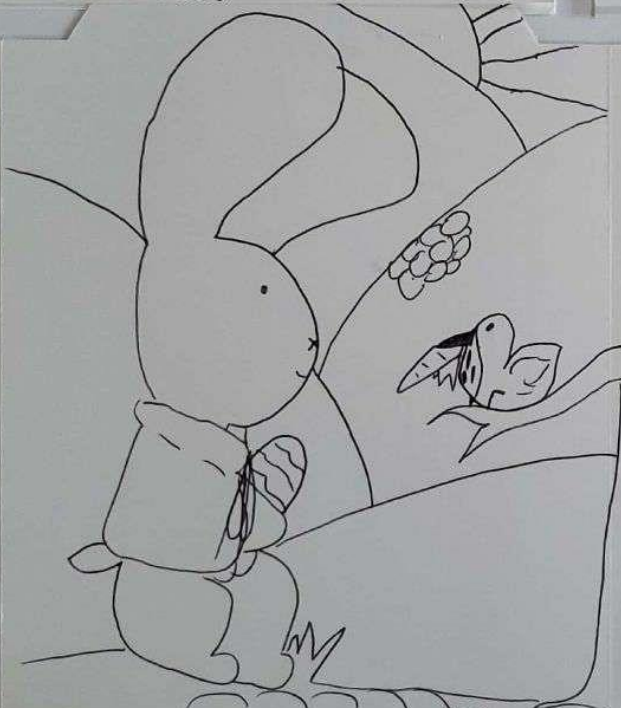
Dear Laurie
What a great pleasure and honor it was
to meet you, your committee, your family
and so many of the loving, friendly people
of Thompson and Marquette! The hard work
everyone did to obtain the market was truly
well worth it. We can appreciate why
my grandfather loved the people of Thompson.
Please use the enclosed for phase II of
the project.
Keep in touch by E-mail.

Sincerely,
Elaine and Bill

P.S. Nice to live on Shanley Road!

Hi Laurie
Thank you for all the news-clippings
and post cards. Your papers did a great
job of covering the momentous event.
We are still talking about the
friendliest people we have met and
thank you again for your warm
reception.

Sincerely,
Elaine and Bill



Thank you



Thank
you
very
much.



Laurie,
It was such a great pleasure
for Maddie and I to visit and
participate in your wonderful dedication
ceremony. Please give our best to
Cher and the members who worked so
hard!! Again, thank you. Glenn & Maddie



November 1, 2006

Dear Laurie, Cherished Friend,
I've been thinking about the special Thompson event repeatedly since arriving back home.

WHAT A DAY!!

I was touched by the extent of love that went into every detail. AMAZING!!

There are few things in life as important as family and friends, but I feel blessed to

consider as many of you in the U.S. as both.

Thank you for honoring me with the special invitation to join you, and thank you, also, for welcoming me with the beautiful, handmade scarf (I LOVE IT!) and thoughtful Goodie bag of items to relax. YOU THINK OF EVERYTHING!!

I must tell you, too, of how pleased I was to meet the acquaintance of The Phantom. (Please deposit 55¢.) He's WONDERFUL!! I KNEW HE WOULD BE!!

The people of Thompson will long remember the lasting memorial you worked so tirelessly to give them, and I will long remember standing on the shoreline, with tears in my eyes, when they received it.

With joy and gratitude,
Laurie

Laurie -

You are our fearless leader and the most organized person I know. Thank you for asking me to be part of this wonderful project. Thompson has become more of my hometown than where I was born and raised. I want you to have this Rouse Simmons bow! (#2, your Dad has #1) as a small token of my gratitude for all of your tireless work.

On to Phase 2!

Love
Laurie



12/8/06

Dear Laurie,

Here are some pictures to add to your collection from the wonderful dedication day in October. My class who went will remember it always. You did such a fantastic job on every little detail. It will be a day I will remember for a long time. Thank you so much!
Merry Christmas, I love you!
Lillian



12/8/06

Thank you for

letting us
bring our
Christmas tree
Ship stories
to the hall.
It was very kind.

Love,
Vanessa
Bamer

Thank you
for letting us bring
our books to the
Christmas tea Ship
to your dedication.
Love,
Lillian LeDevre

