

100 0 100 200 Feet



- Project Area Boundary
- Access Road
- Penstock
- Intermittent Stream
- Perennial Stream
- Dead River
- Garden / Park Area
- Lower Right-of-Way Open Area
- Mature Conifer / Broad-leaved Deciduous
- Riparian Wetlands
- Non-riparian Wetlands
- Middle/Upper Right-of-Way Open Area
- Maturing Broad-leaved Deciduous
- Young Broad-leaved Deciduous
- Selective Timber Harvest
- Mature Hemlock Stand

Figure 2-3.
 McClure Penstock Project Area
 East End



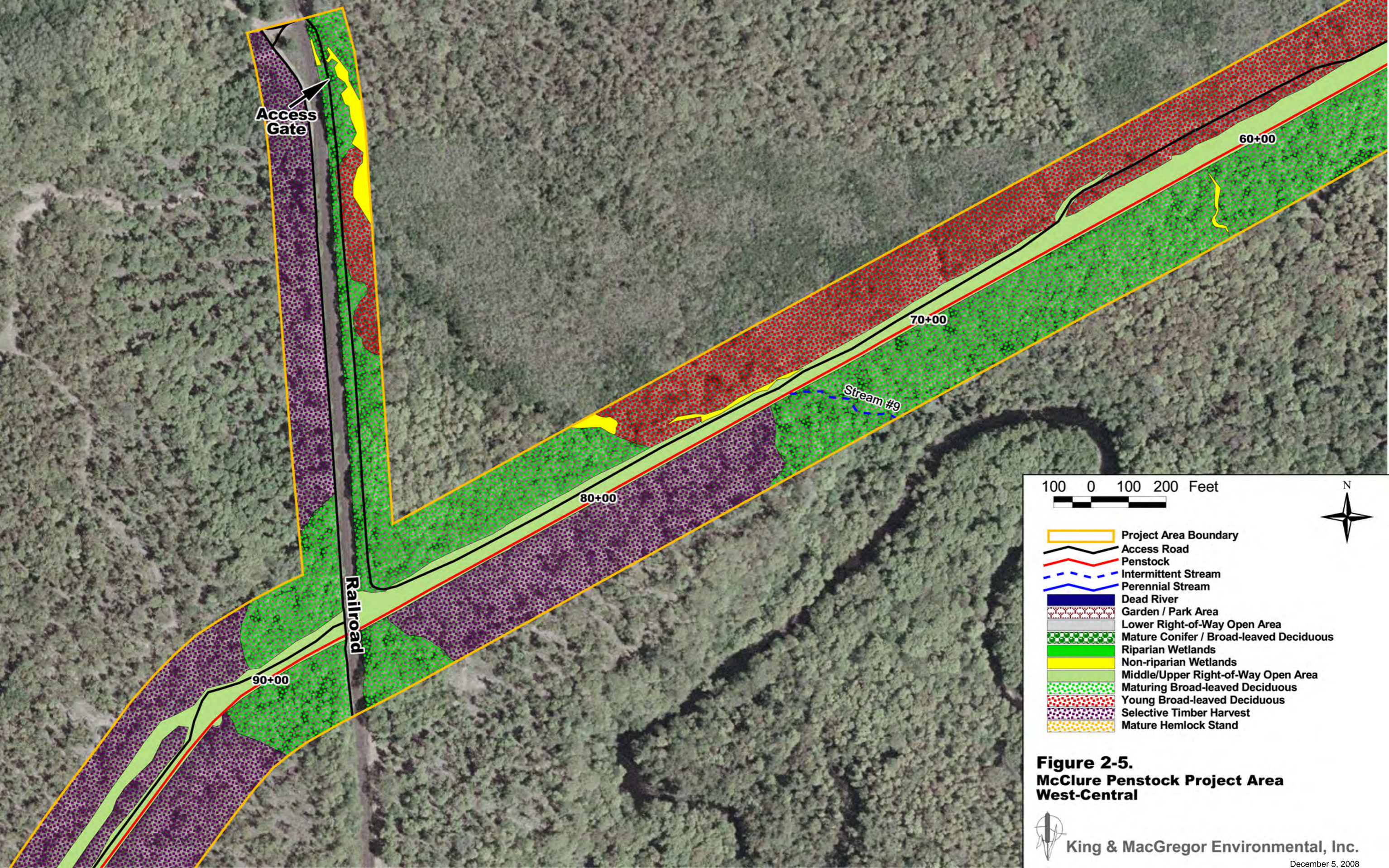
100 0 100 200 Feet



- Project Area Boundary
- Access Road
- Penstock
- Intermittent Stream
- Perennial Stream
- Dead River
- Garden / Park Area
- Lower Right-of-Way Open Area
- Mature Conifer / Broad-leaved Deciduous
- Riparian Wetlands
- Non-riparian Wetlands
- Middle/Upper Right-of-Way Open Area
- Maturing Broad-leaved Deciduous
- Young Broad-leaved Deciduous
- Selective Timber Harvest
- Mature Hemlock Stand

Figure 2-4.
McClure Penstock Project Area
East-Central





Access Gate

60+00

70+00

Stream #9

80+00

Railroad

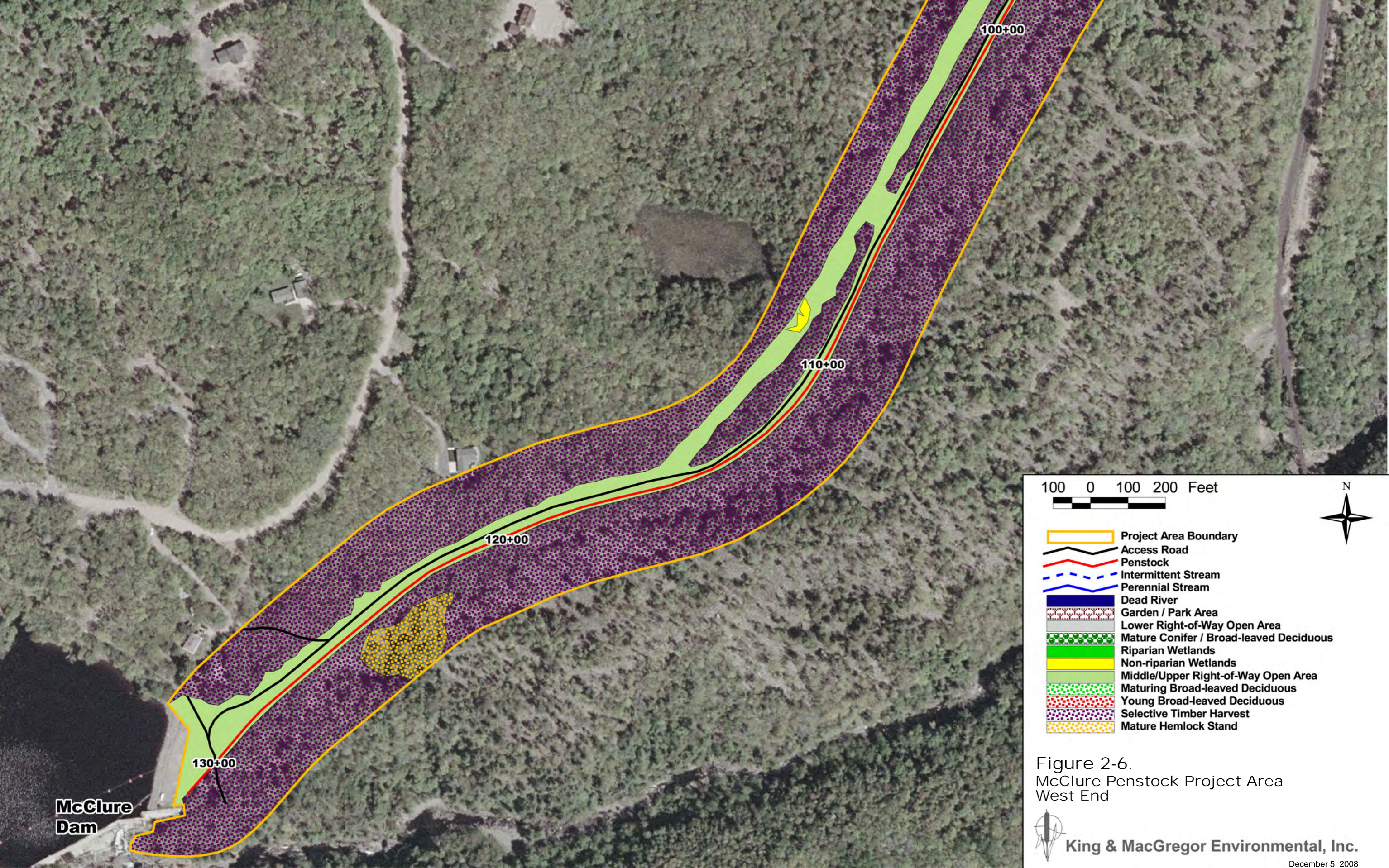
90+00

100 0 100 200 Feet



-  Project Area Boundary
-  Access Road
-  Penstock
-  Intermittent Stream
-  Perennial Stream
-  Dead River
-  Garden / Park Area
-  Lower Right-of-Way Open Area
-  Mature Conifer / Broad-leaved Deciduous
-  Riparian Wetlands
-  Non-riparian Wetlands
-  Middle/Upper Right-of-Way Open Area
-  Maturing Broad-leaved Deciduous
-  Young Broad-leaved Deciduous
-  Selective Timber Harvest
-  Mature Hemlock Stand

Figure 2-5.
McClure Penstock Project Area
West-Central



100 0 100 200 Feet



-  Project Area Boundary
-  Access Road
-  Penstock
-  Intermittent Stream
-  Perennial Stream
-  Dead River
-  Garden / Park Area
-  Lower Right-of-Way Open Area
-  Mature Conifer / Broad-leaved Deciduous
-  Riparian Wetlands
-  Non-riparian Wetlands
-  Middle/Upper Right-of-Way Open Area
-  Maturing Broad-leaved Deciduous
-  Young Broad-leaved Deciduous
-  Selective Timber Harvest
-  Mature Hemlock Stand

Figure 2-6.
McClure Penstock Project Area
West End



**McClure
Dam**