



June 7, 2016

Mr. John Zygaj, P.E., Regional Engineer  
Federal Energy Regulatory Commission  
230 South Dearborn Street, Suite 3130  
Chicago, IL 60604

**Re: Au Train Hydroelectric Project, FERC Project # 10856  
U.P. Hydro, LLC  
Spillway Capacity Remediation Monthly Progress Report #11**

Dear Mr. Zygaj;

On behalf of the Licensee, U.P. Hydro, LLC, Renewable World Energies (RWE), LLC, is hereby submitting its tenth monthly progress report for the spillway capacity remediation at its Au Train project. The report is due by **June 7, 2016**. This report closely mimics the Licensees previous report due to the tasks in process. Much of the same information contained in the last report is included with this report, but has been left in for reference. Please note that the IDF study has been completed in a draft form.

Work performed in May:

Mead and Hunt are working on the IDF analysis and it is currently being reviewed, RWE expects to have it in July. A short summary of the hydraulic modeling for the IDF is as follows:

- HEC-RAS 5.0 Beta was used to perform a combined 1D and 2D dam breach model.
- The entire reservoir (including south dam), north dam (with proposed gate modifications), downstream bridges (including proposed railroad bridge modifications), and Au Train river to the north down to Lake Au Train were modeled in 1D. This allows for dynamic modeling of flood flows (with and without failure of the north dam) through the reservoir, north dam and bridges.
- The portion of the Au Train River through Lake Au Train and continuing on through the village of Au Train out to Lake Superior was all modeled in 2D. This allows for accurate representation of the flood wave as it passes through the meandering river and spreads laterally over the relatively flat topography in the area.
- The first floor elevations for homes that were surveyed along Lake Au Train and through the village were used to assess the incremental hazard at each structure based on the results of the 2D modeling.

**Corporate Office**

P.O. Box 264  
100 S. State Street  
Neshkoro, WI 54960  
Fax: 920-293-4100

Phone: 855-99HYDRO  
(855-994-9376)

[www.renewableworldenergies.com](http://www.renewableworldenergies.com)

**Administrative Office**

1001 Stephenson Street  
Norway, MI 49870  
Fax: 906-563-9344



**Corporate Office**  
P.O. Box 264  
100 S. State Street  
Neshkoro, WI 54960  
Phone: 855-99HYDRO  
Fax: 920-293-4100  
[www.renewableworldenergies.com](http://www.renewableworldenergies.com)

Mead and Hunt drafted a memo summarizing the existing geotechnical information related to the South Embankment. They are currently reviewing the memo internally. Following their review, Mead and Hunt will prepare a summary of their findings and forward the information to RWE.

RWE continues working to purchase the piece of land owned by the Railroad Company that it currently has an easement for. Although no replies have been received after repeated attempts to contact the current owner, the Licensee is working internally to keep the purchase moving forward.

Work scheduled in June:

Mead and Hunt will finalize the IDF report documenting the methodology and results of the IDF study for submittal.

Mead and Hunt will begin a preliminary level design of the spillway and railroad bridge modifications necessary to pass the IDF.

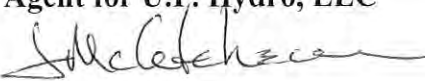
Mead and Hunt will continue to work to finalize the memo summarizing the geotechnical information related to the south embankment.

RWE will continue to work on the sale transaction of the piece of property currently owned by the Railroad Company. To date, RWE continues attempts to make contact with the current owner of the Railroad Company.

The current overall schedule is attached with this letter as in past progress reports.

If there are any questions regarding the enclosed progress report for the spillway capacity remediation at the Au Train project, please direct them to Mr. John McCutcheon at (855) 994-9376 ext. 104 or [jmccutcheon@rwehydro.com](mailto:jmccutcheon@rwehydro.com)

Sincerely,  
Renewable World Energies, LLC  
**Agent for U.P. Hydro, LLC**

*for*   
Jason Kreuzscher  
Vice President, Operations

Attachments:

Au Train Spillway Remediation Schedule, Mead and Hunt, July 8, 2015

Cc:

RWE files

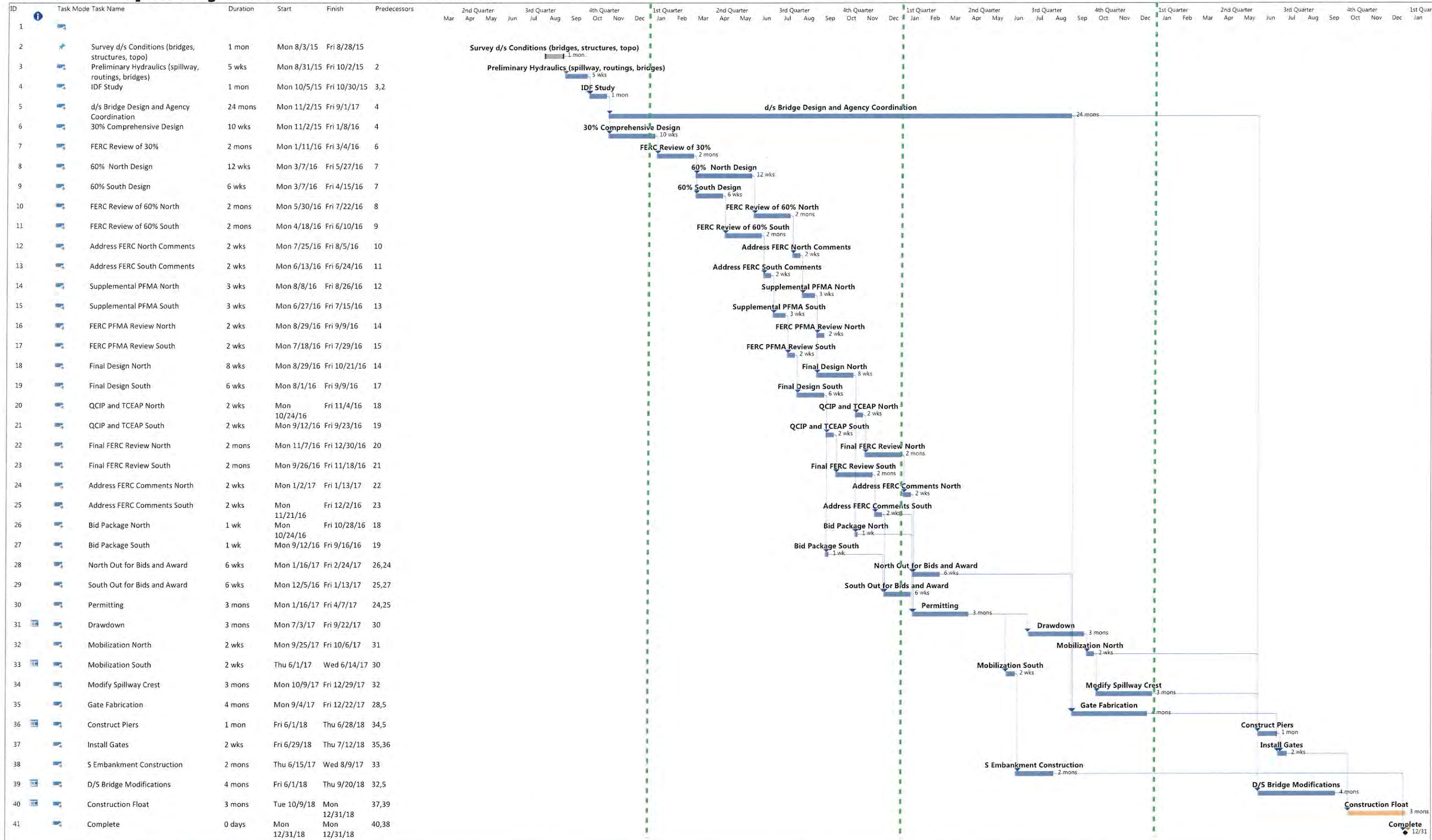
# Au Train Spillway Remediation Schedule

2015

2016

2017

2018



Project: DRAFT\_Au Train Sched

Task	Summary	Inactive Milestone	Duration-only	Start-only	External Milestone	Critical Split
Split	Project Summary	Inactive Summary	Manual Summary Rollup	Finish-only	Deadline	Progress
Milestone	Inactive Task	Manual Task	Manual Summary	External Tasks	Critical	Manual Progress

Document Content(s)

ATRN Remediation Status Report\_11.PDF.....1-3