

MAR 2 1992

1749-E-07 D301-105:991
103

Economic Resource Impact Statement

(Expanded Version)

Fiscal Year 1991



**Cost Analysis Branch
Comptroller Squadron
410th Wing
K.I. Sawyer AFB, MI**

COMPLETED

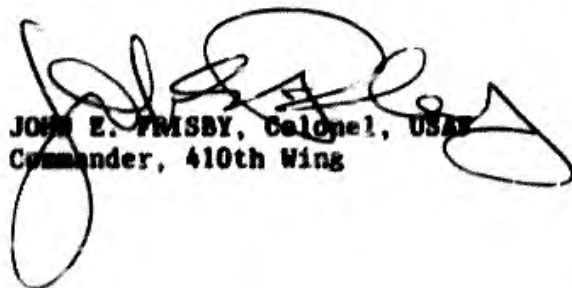


The Cost Analysis Branch at K. I. Sawyer Air Force Base (AFB) annually prepares the Economic Resource Impact Statement (ERIS). It provides unclassified information to Air Force planners, public officials, and citizens concerning the impact of the base resources on the local community and surrounding geographical area.

The ERIS data ranges from mission, history, and organizations assigned to the installation to a summary of base construction, contracts, expenditures, and services. The economic impact summary table summarizes the data and computes the total economic impact.

The economic impact region (EIR) adjacent to K. I. Sawyer benefits from the payroll spent by military and civilian employees, and profits by serving many of the procurement needs of the base. The EIR includes all communities within a fifty mile radius of the base. The final economic impact not only reflects direct dollars flowing into the EIR, but also the secondary jobs created as a result of spending within those communities.

In turn, the local communities have generously supported the mission and people of K. I. Sawyer. The coexistence between the base and the community is evidence of a strong and trusted relationship. It is this relationship that is the backbone of our accomplishments. Without the support of our civilian friends, we at K. I. Sawyer AFB could not effectively carry out our mission.


JOHN E. FRISBY, Colonel, USAF
Commander, 410th Wing

FOREWORD

410th WING COST ANALYSIS BRANCH

The K. I. Sawyer Air Force Base (AFB) Economic Resource Impact Statement is prepared by the staff of the Cost Analysis Branch, Comptroller Squadron, 410th Wing (SAC). Its purpose is to provide readers with an insight into the many and varied resources required to operate the base efficiently. It also summarizes the impact of K. I. Sawyer AFB on the local economy.

The organizations and individuals listed at the bottom of each page provided the information contained in this publication. We extend sincere appreciation and thanks to each individual who provided input and support.

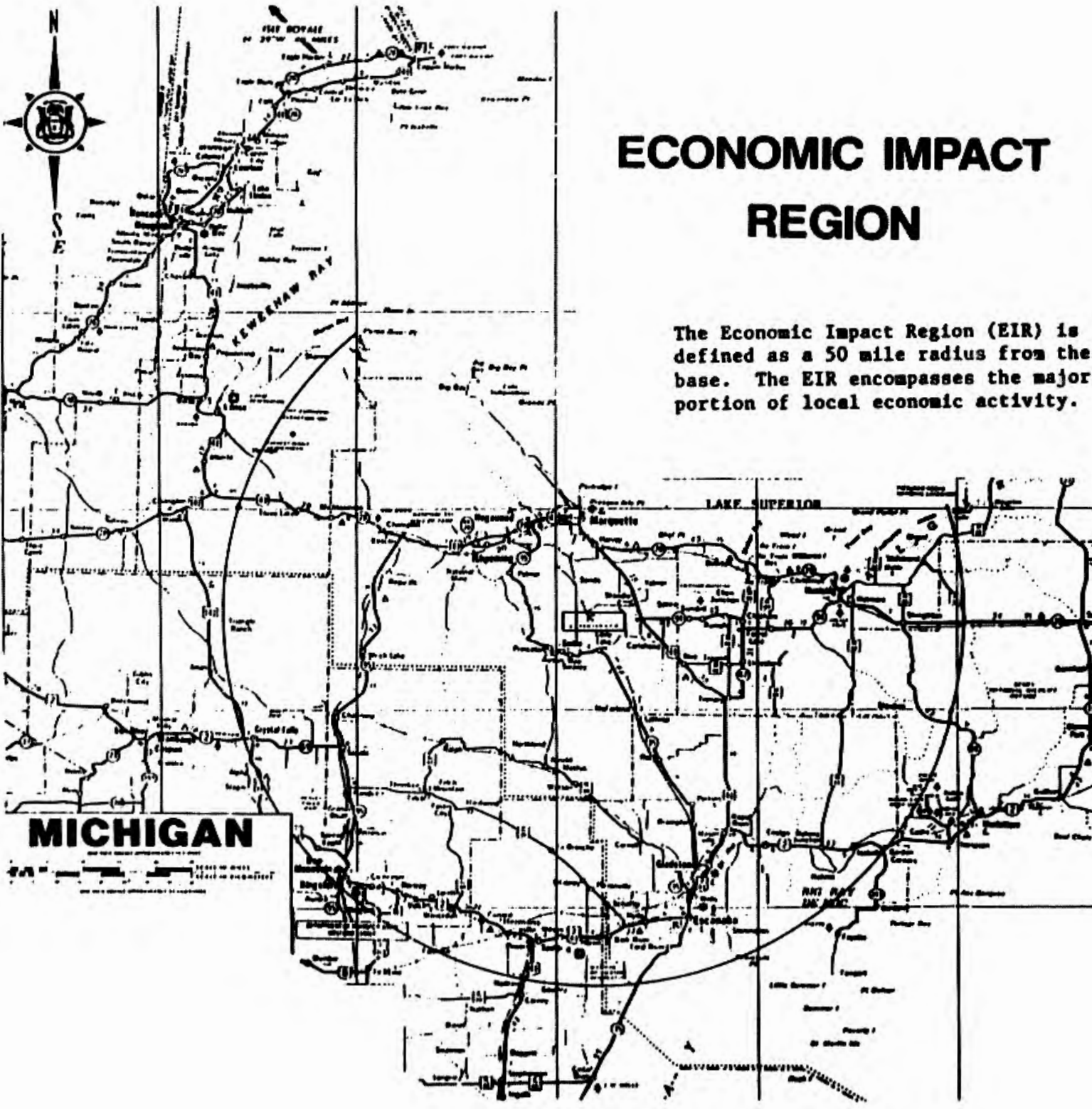
COST ANALYSIS BRANCH STAFF

Capt John R. Sniels
TSgt Pamela J. Pasi
Bernice L. Schlicht
Richard C. Meese
SSgt Gina C. Siroy
Sgt Vincent L. Evers

Chief, Cost Analysis Branch
NCOIC, Cost Analysis Branch
Cost Analyst
NAF Financial Analyst
Cost Analyst
Information Management

CONTENTS

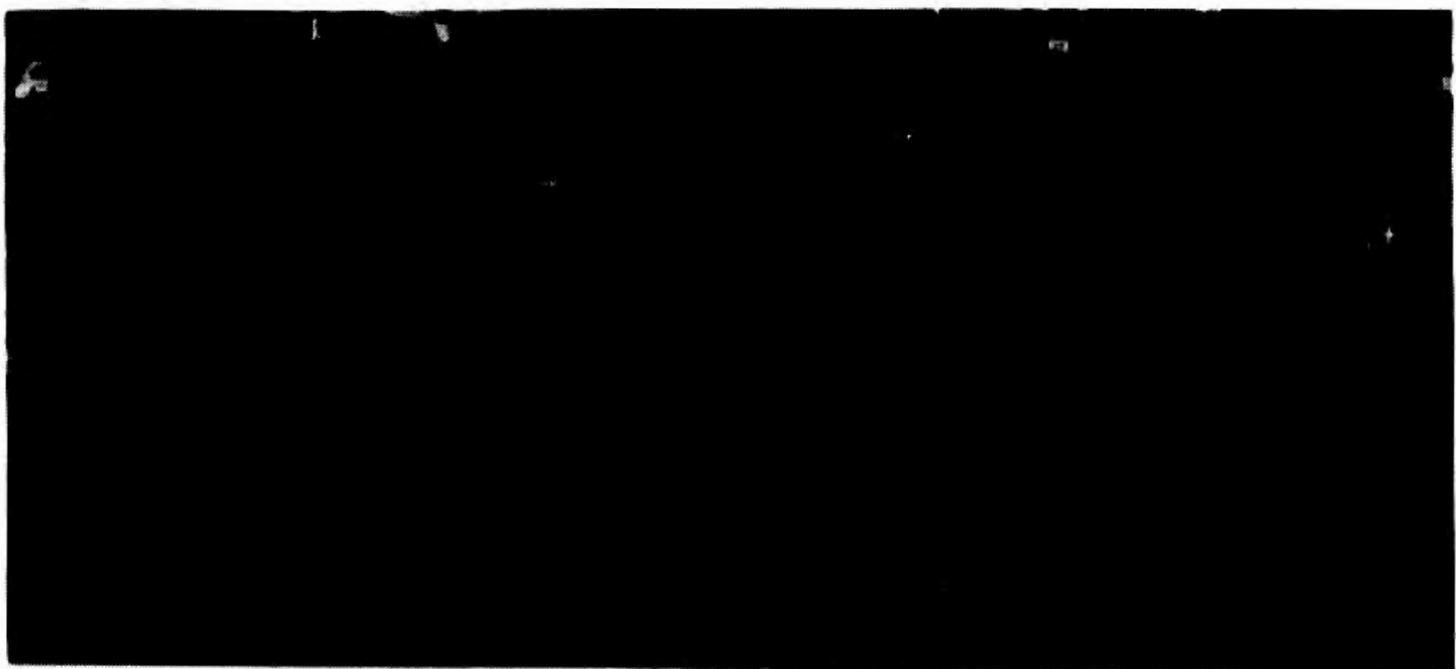
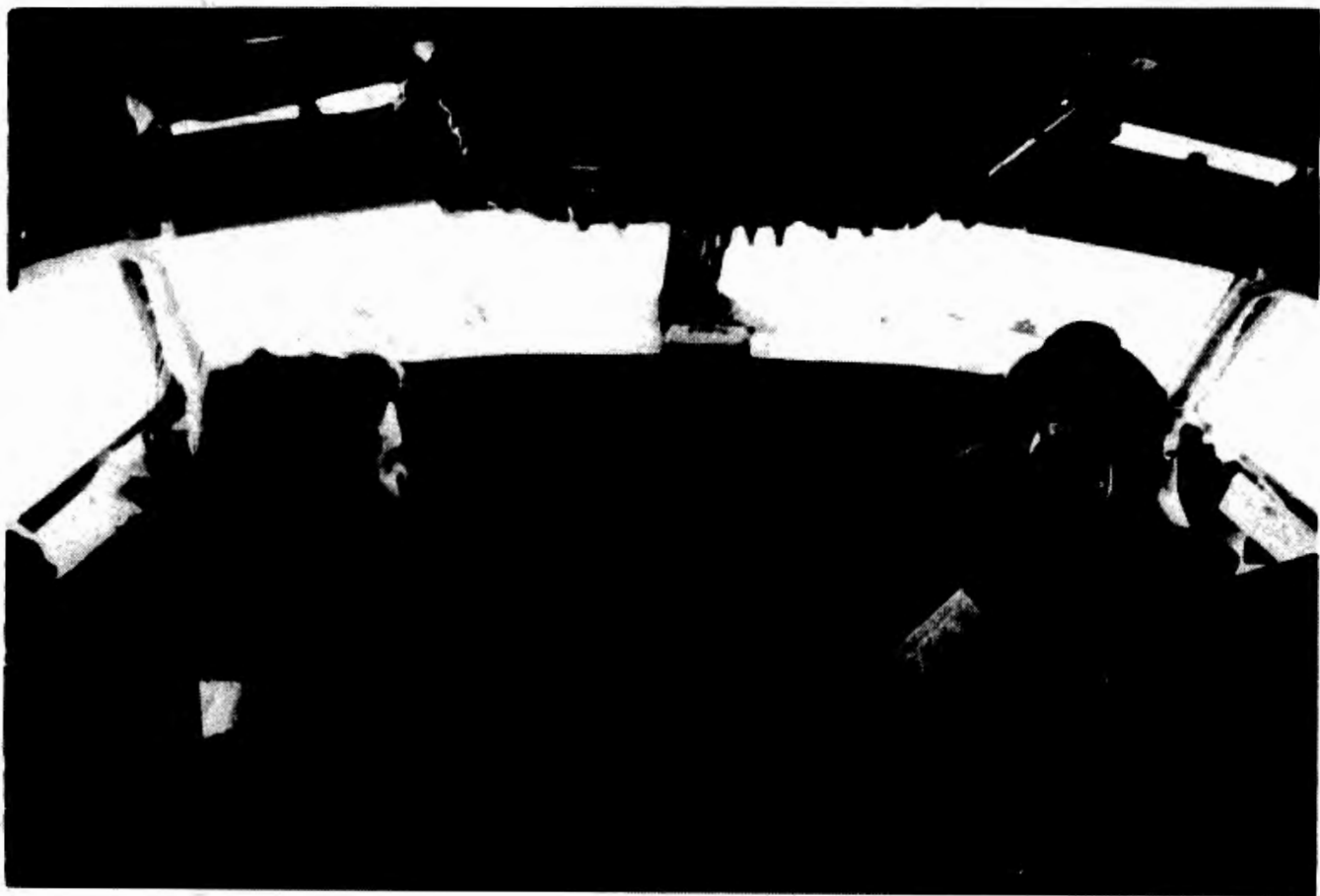
COMMANDER'S COMMENTS.....	1
FOREWORD.....	ii
CONTENTS.....	1
ECONOMIC IMPACT REGION.....	2
MISSION.....	3
410th Wing.....	4
HISTORY.....	5
K. I. Sawyer Air Force Base.....	6
ORGANIZATIONS.....	8
Table 1 - Organizations, Host, Associate.....	9
FORCE STRUCTURE.....	10
Table 2 - Force Structure.....	11
CAPITAL ASSETS.....	12
Table 3 - Capital Assets.....	13
VALUE OF RESOURCES & EXPENDITURES.....	14
Table 4 - Value of Resources and Expenditures.....	15
PERSONNEL DATA.....	17
Table 5 - Summary by Classification.....	18
Table 6 - Payroll.....	19
CONSTRUCTION PROJECTS/CONTRACTS.....	20
Table 7 - Summary of Construction/Contracts.....	21
PROGRAM DATA.....	22
Table 8 - Program Data.....	23
COMMUNITY PROJECTS.....	30
MORALE, WELLNESS, AND READINESS.....	33
Table 9 - Morale, Wellness, and Readiness.....	34
ECONOMIC IMPACT SUMMARY.....	35
Economic Impact.....	36
Part 1: Data Summary and Adjustments.....	37
Part 2: ERIS Economic Impact Calculation.....	38
Part 3: Summary of Jobs.....	39
Part 4: Glossary of Terms.....	40
DISTRIBUTION.....	42
CRITIQUE.....	43



ECONOMIC IMPACT REGION

The Economic Impact Region (EIR) is defined as a 50 mile radius from the base. The EIR encompasses the major portion of local economic activity.

Mission



MISSION

The primary mission of the 410th Wing is to serve as a deterrent to attacks on the United States by maintaining a state of readiness in order to permit immediate retaliatory operations against its adversaries. We must be prepared to perform assigned tasks as stated in Emergency War Orders and related tasking. This is accomplished by implementing maintenance and logistical procedures to keep the assigned B-52H bombers and KC-135A tankers in a safe operational condition. Combat crews are maintained in a high state of readiness through comprehensive air and ground training programs.

The emblem is symbolic of the Wing and its mission, with the stars symbolic of the World War II history of the 410th Bombardment Group. The blue background alludes to the sky, the primary theater of the Air Force operations, with light and deep shades referring to day and night maintenance of peace. The globe signifies the unit's world wide capabilities, while the winged bomb depicts the type of unit, and the Air Force blue stars at the four and ten o'clock positions depict the numerical designation. A total of twenty stars symbolize the A-20 Havoc Bomber utilized by the 410th Bombardment Group during World War II. The twenty stars encircling the globe represent the variety of equipment destroyed by the 410th. The three stars on the lightning bolt signify the mission against the V-1 weapon sites, the Presidential Distinguished Unit Citation awarded, and the six campaign participation credits earned. The lightning bolt symbolizes the Air Force Outstanding Unit Award awarded to the Wing in 1963. The emblem bears the Air Force colors, golden-yellow and ultra-marine blue, and the national colors, red, white, and blue.



SOURCE: 410 WG/HO/Sgt White/2470

History



K. I. SAWYER AIR FORCE BASE

K. I. Sawyer Air Force Base, located 21 miles south of Marquette, Michigan, was named after Kenneth I. Sawyer, a former Marquette County Road Commissioner. A hill of sand was the prominent feature of the present base area when, in 1941, Sawyer first presented his plans for an airport to the Marquette County Board. As Superintendent of the Marquette County Road Commission, airports were not his direct responsibility; however, Sawyer realized the value of air service to Marquette County and through his efforts an airport was built at the site of the present base. It was suggested during World War II that an Air Force base be built on the site, but the proposal was not acted upon. The airport was named for Sawyer after his death in 1944.

Negotiations between the county and U. S. Government for the lease of the airport as a military installation began in 1954. On January 24, 1955, an agreement was signed, and K. I. Sawyer Airport became an air base.

The base was activated by military personnel on April 8, 1956, but the runway was not officially opened until late October 1959, when an F-101B "Voodoo" touched down at the field. The host unit at the time was 56th Fighter Wing which was comprised of two major tenant units. They were the Sault Ste. Marie Air Defense Sector, a Semi-Automatic Ground Environment (SAGE) operation, and the 4042nd Strategic Wing, a Strategic Air Command Unit. Both tenants moved to the base in 1958.

In February 1963, the 4042nd Strategic Wing was redesignated the 410th Bombardment Wing (Heavy). The sector headquarters functioned until the end of September 1963 when it was phased out. The 56th Fighter Wing inactivated in late 1963, and on January 1, 1964, control of the base passed to the 410th.

The F-101B Voodoo-equipped 62nd Interceptor Squadron, originally assigned to the 56th, remained at Sawyer as a tenant unit until April 30, 1971 when it was inactivated. The 87th Fighter Interceptor Squadron and its F-106 Delta Darts were transferred to Sawyer from Duluth Municipal Airport, Minnesota, in May 1971. The 87th Fighter Interceptor Squadron remained as a tenant unit until 1 October 1985 when it was inactivated.

Sawyer is controlled in ascending order of command by the Eighth Air Force, headquartered at Barksdale AFB, Louisiana, and the Strategic Air Command, headquartered at Offutt AFB, Nebraska.

The 410th and its four bombardment squadrons - the 644th, 645th, 646th, and 647th - were activated on 1 July 1943 and assigned to Will Rogers Field, Oklahoma for initial training in the Douglas A-20 "Boston" attack bomber. After three months at Will Rogers, the 410th moved to Muskogee Army Field at Muskogee, Oklahoma, for advance training. The group flew around the clock, accumulating hundreds of low-level training hours in preparation for what the men assumed would be the eventual deployment to the Pacific. It was at Muskogee that the 644th applauded itself as the "Best Damn Bomb Squadron in the World" - a claim held in something more than mild dispute by the other three squadrons.

The 410th arrived at Laurel, Mississippi, on 5 January 1944. Mud, heavy fog, and smoke from nearby factories prevented the accomplishment of all but minimum training. Early in February the group moved to Lakeland Army Airfield, Lakeland, Florida. In its five-week stay at Lakeland, the 410th completed bombing and gunnery training. They then turned to simulated combat missions complete with briefings, interrogations, mission reports, and critiques. The fliers spent some 3,300 hours in the air. Early in March, they were pronounced ready for combat and overseas deployment to Europe.

From Lakeland, the men went to Camp Kilmer, New Jersey, for processing. On 21 March, the men boarded the Saturnia, an Italian merchant ship that escaped from Trieste and evaded German bombers. The Saturnia sailed from New York on 23 March with 3,600 men aboard. The crossing was without incident and the Saturnia anchored off Britian's coast in the Firth of Clyde on 2 April 1944. The next day, the men boarded a train for Birch, England. The group then moved to Gosfield, England. On 16 April, the group saw its first action.

The 410th and its A-20s went into combat on 4 May as part of the Ninth Air Force. For the next month, they bombed coastal defenses, airfields, V-weapon sites, and marshalling yards in advance of the Normandy Invasion. On D-Day, the 410th became heavily involved in the assault against the Fortress of Europe.

On 18 September, the group relocated to Maisoncelles, France. From Maisoncelles, the 410th defended villages and attacked railroad bridges and overpasses, marshalling yards, military camps, and communication centers in support of the assault against the Siegfried Line. In late December, the 410th flew 411 sorties against the German counter offensive known as the Battle of the Bulge. In the Ardennes, the 410th proved to be especially effective; so much so that the group received the Presidential Distinguished Unit Citation for its mission on 23, 24, and 25 December 1944.

With the German's last big gasp stifled, the 410th advanced to Rheims, France, on 9 February 1945. From Rheims, the 410th bombed industrial targets along the Ruhr and deep inside Germany. On 25 April 1945, the 410th flew its final combat mission. The target was an airfield in Erding, Germany.

In late August, the group was reassigned to Seymour Johnson Field, North Carolina. For the next two months, the men trickled away as the American Military Machine was disassembled. On 5 October, the 410th moved to Myrtle Beach Army Field, South Carolina, and on 7 November, the 410th was inactivated.

The 410th was reborn on 1 February 1963 as the 410th Bombardment Wing (Heavy) and headquartered at K. I. Sawyer AFB, Michigan. Assigned to the Strategic Air Command (SAC), the 410th exchanged the A-20 aircraft for the B-52H Stratofortress bomber and the KC-135A Stratotanker.

Organizations



Table 1. ORGANIZATIONS

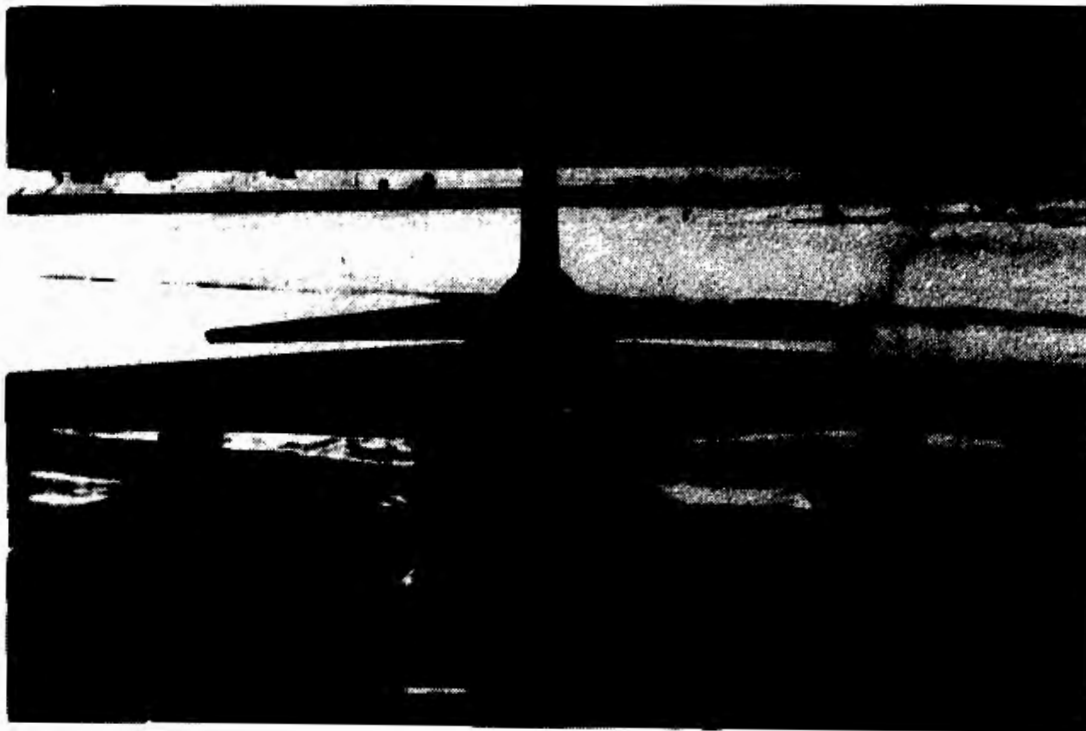
K. I. SAWYER AFB

-- As of 30 September 1991 --

<u>HOST - 410th Wing</u>	<u>Command</u>
644th Bombardment Squadron	Strategic Air Command
46th Air Refueling Squadron	SAC
410th Field Maintenance Squadron	SAC
410th Munitions Maintenance Squadron	SAC
410th Supply Squadron	SAC
410th Transportation Squadron	SAC
410th Comptroller Squadron	SAC
410th Support Group	SAC
410th Civil Engineering Squadron	SAC
410th Security Police Squadron	SAC
410th Services Squadron	SAC
410th Mission Support Squadron	SAC
410th Medical Group	SAC
410th Communications Squadron	SAC
410th Operations Group	SAC
410th Operations Support Squadron	SAC
410th Logistics Group	SAC
410th Logistics Support Squadron	SAC
 <u>ASSOCIATE UNITS</u>	
Area Defense Counsel	AF Legal Services Command
Army and Air Force Exchange Service	AAFES
Defense Reutilization and Marketing Office	Department of Defense
Extremely Low Frequency Transmitter Facility	Navy
U.S. Army Corps of Engineers	Army
Detachment 2, Aerospace Systems Division	AF Systems Command
Detachment 20, 3904 Management Engineering	SAC
Detachment 225, 3753 Field Training Squadron	Air Training Command
Detachment 238, AF Audit Agency	AFAA
Detachment 324, AF Commissary Services	AFCOMS
Detachment 512, AF Office of Special Investigations	AFOSI
Operating Location F Det 1, 1360 Audio Visual Squadron	MAC
Operating Location KI, 11st Test and Evaluation Squadron	SAC
Operating Location AM, 6510 Logistics Test Squadron	AFSC

Source: SACMET/Sgt Gardiner/2002

Force Structure



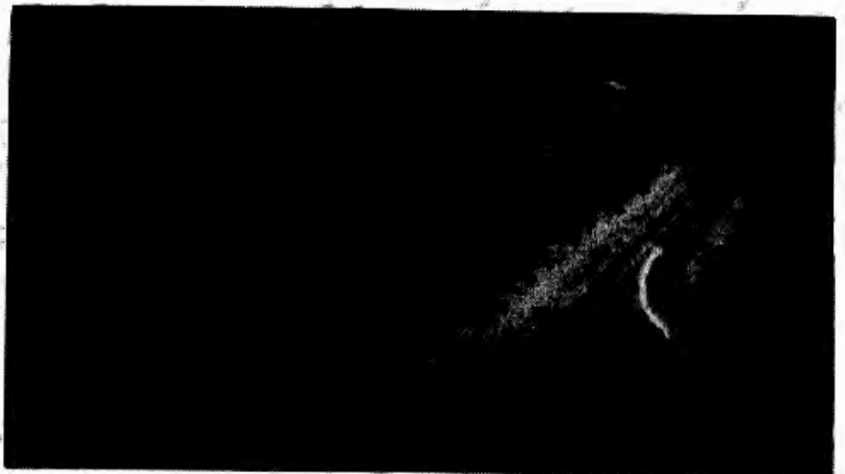
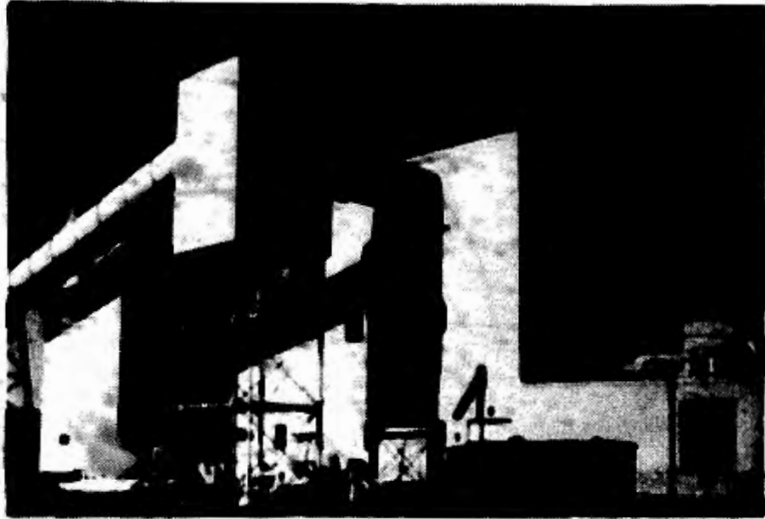
-- As of 30 September 1991 --

Activity	Aircraft Type	Authorized
644th Bombardment Squadron	B-52H	*
46th Air Refueling Squadron	KC-135A	*
71st Flying Training Squadron	T-37B	*

* Data omitted per OPSEC Officer.

SOURCE: DOJ/Maj Wallace/1528

Capital Assets



-- As of 30 September 1991--

LAND¹		<u>Acres</u>		
Fee Owned		2,762		
Easements, Right of Way		291		
Leases		2,001		
Public Domain		160		
Total		5,214		
RUNWAYS¹		<u>WIDTH</u>	<u>LENGTH</u>	
N/S		300'	12,500'	
BUILDINGS¹		<u>Number of Buildings</u>	<u>Square Footage</u>	
Maintenance		17	504,531	
Civil Engineering		21	221,249	
Base Supply Warehouses		18	232,839	
Administrative		26	447,295	
Commissary		1	43,502	
Recreational Facilities		55	146,471	
Base Exchange		1	30,464	
Hospital		1	119,588	
Total		140	1,745,939	
FAMILY HOUSING¹		<u>2-BR</u>	<u>3-BR</u>	<u>4-BR</u> <u>Total</u>
Officer		0	184	95 279
Enlisted		150	1,038	210 1,398
Trailer Pads		N/A	N/A	N/A 199
Total		150	1,222	305 1,876
DORMITORY QUARTERS¹		<u>Number</u>	<u>Capacity</u>	
Airmen/NCU		9	755	
Visiting Airmen Qtrs		1	39	
Visiting Officer Qtrs		3	32	
Temporary Lodging Facility		6	35	
Distinguished Visitors		2	6	
Bachelor Officer Qtrs		2	18	
Total Quarters		23	885	
COMPUTERS²		<u>Number</u>		
Owned Computer Units		521		
VEHICLES³		<u>Number</u>		
Owned		486		
Leased		27		
Total		513		

SOURCES: 1. DEE/Mr Hemmila/2393
 2. SCX/Mr Moneyhan/1037
 3. LGTO/TSgt Enloe/1240

Value of Resources

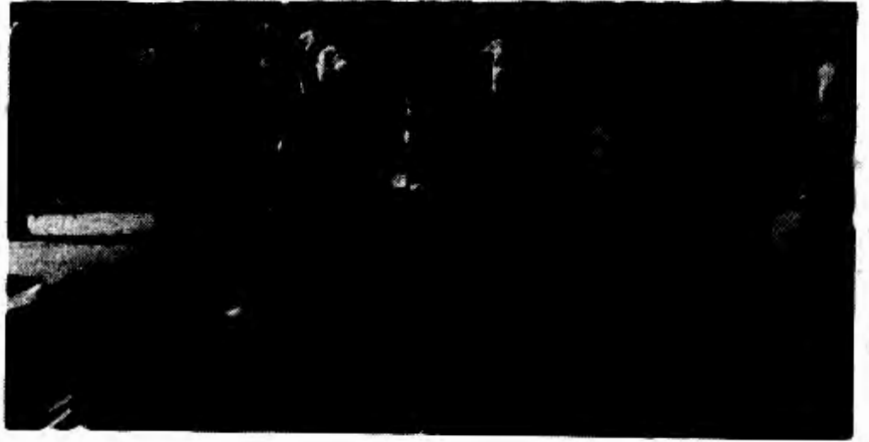


Table 4. VALUE OF RESOURCES & EXPENDITURES**K. I. SAWYER AFB****-- As of 30 September 1991 --****WEAPON SYSTEMS**

Aircraft	\$1,671,232,500
Support Equipment	<u>40,632,519</u>
Total Weapon Systems	\$1,711,865,019

CAPITAL ASSETS

Bldgs, Real Property	\$175,537,000
Land	58,000
Other	72,749,000
ADPE	<u>4,992,916</u>
Total Capital Assets	\$253,336,916

EQUIPMENT

Appropriated	105,816,344
Nonappropriated	257,927
Base Exchange	<u>3,647,960</u>
Total Equipment	\$109,722,231

INVENTORIES

Stock Fund	
General Support	\$ 4,736,752
Systems Support	3,843,301
Fuels	3,280,040
Medical/Dental	<u>186,350</u>
Total	\$ 12,046,443

-
- SOURCES: 1. AFR 173-13, Table A10-1
 2. LGTO/TSgt Enloe/1204, MAFG/MSgt Strobe/2179, MAWAE/SSgt Sanders/2880
 3. FMFA/Ms Wolfgang/2324
 4. FMC/Mr Meese/2399
 5. Base Exchange/Mr Carrigan/2157
 6. FMFZ/Ms Schopper/2285

Table 4. VALUE OF RESOURCES AND EXPENSES

K. I. SAWYER AFB

-- Fiscal Year 1991 --

OPERATIONS AND MAINTENANCE ¹
(Excluding Civilian Pay)

	Host	Tenant	Total
Communications	\$ 795,936	\$ 0	\$ 795,936
Contract Services	3,646,142	327,289	3,973,430
Equipment Purchased	2,234,308	0	2,234,308
Equipment Maintenance	357,751	0	357,751
Equipment Rentals	53,139	0	53,139
Facility Projects	8,048,184	0	8,048,184
Ground Fuels	560,535	0	560,535
Heating Fuels	990,003	0	990,003
Supplies	13,303,489	0	13,303,489
Travel	1,957,309	17,978	1,975,287
Transportation of Property	218,921	0	218,921
Utilities	3,106,220	0	3,106,220
Claims	138,614	0	138,614
Total O&M Expenses	\$35,410,551	\$345,266	\$35,755,817

OTHER FUNDED PROGRAMS ¹

Military Family Housing	\$ 5,709,978	0	\$ 5,709,978
Investment Equipment	<u>379,801</u>	0	<u>379,801</u>
Total Other Expenses	\$ 6,089,779		\$ 6,089,779
Total All Expenses	\$41,500,330	\$345,266	\$41,845,596

RETAIL SALES

Commissary ²	\$ 9,846,353		\$ 9,846,353
Base Exchange ³	9,799,133		9,799,133
Nonappropriated ⁴	2,031,079		2,031,079
Total Retail Sales	21,676,565		21,676,565

SOURCE: 1. FMB/Mr Mattis/2990
 2. Commissary/Mr Forchini/2382
 3. BX/Mr Carrigan/2157
 4. FMC/Mr Meese/2991

Personnel Data



**Table 5. SUMMARY OF PERSONNEL BY CLASSIFICATION
AND HOUSING LOCATION**

K. I. SAWYER AFB

-- As of 30 September 1991 --

Classification	Living On-Base	Off-Base	Total
APPROPRIATED FUND MILITARY ¹			
Active-Duty Permanent Party	2,483	820	3,303
ACTIVE DUTY MILITARY FAMILY MEMBERS ¹	3,885	1,038	4,923
APPROPRIATED FUND CIVILIAN ¹			
General Schedule			257
Federal Wage System			234
Other			1
Total Civilian			492
NONAPPROPRIATED FUNDS. CONTRACT CIVILIANS AND PRIVATE BUSINESS			
Civilian NAF ²			240
Base Exchange ³			147
Contract Civilians ⁴			437
Private Business on Base			
Branch Bank ⁵			10
Credit Union ⁶			8
Total NAF, Contract and Private Business			842
MILITARY RETIREES ⁷			
Air Force			684
Army			298
Navy			187
Marine Corps			29
Coast Guard			55
Total			1253

-
- SOURCES:**
1. MSSQ/MSPSM/CMSgt Buchweitz/1270
 2. FMC/Mr Meese/2999
 3. Base Exchange/Mr Carrigan/2157
 4. LGC/Capt Fahrenkamp/1049
 5. MFC First National Bank/Mr Shaw/228-1286
 6. JMS Credit Union/Mr Harvey/346-9266
 7. HQ SAC/FMC/MSgt Johnson/DSN 271-4392

Table 6. SUMMARY OF ANNUAL GROSS PAYROLL BY CLASSIFICATION K. I. SAWYER AFB
AND HOUSING LOCATION

-- As of 30 September 1991 --

APPROPRIATED FUND MILITARY ¹

Military On Base	\$41,392,423
Military Off Base	<u>42,441,210</u>
Total Military	\$83,833,633

APPROPRIATED FUND CIVILIAN ^{2*}

General Schedule	\$ 5,683,565
Federal Wage System	5,639,378
Other	<u>2,650</u>
Total Civilian	\$11,325,593

NONAPPROPRIATED FUND/OTHER CIVILIANS *

Nonappropriated ³	\$ 1,782,261
Base Exchange ⁴	1,350,000
Private Business on Base	
Branch Bank ⁵	114,771
Credit Union ⁶	<u>113,420</u>
Total NAF, and other Civilian	\$ 3,360,452

MILITARY RETIREES ¹

Air Force	\$ 9,308,928
Army	2,871,096
Navy	2,251,344
Marine Corps	366,792
Coast Guard	<u>743,196</u>
Total	\$15,541,356

* Gross income, does not include retirement or employer contributions.

NOTE: Payroll for contract civilians is captured in Table 7.

SOURCES: 1. HQ SAC/ACC/MSgt Johnson/DSN 271-4392
2. FMFV/Mrs Johnson/1103
3. FMC/Mr Meese/2999
4. Base Exchange/Mr Carrigan/2157
5. MPC First National Bank/Mr Shaw/228-1286
6. JMS Credit Union/Mr Harvey/346-9266

Construction Projects & Contracts

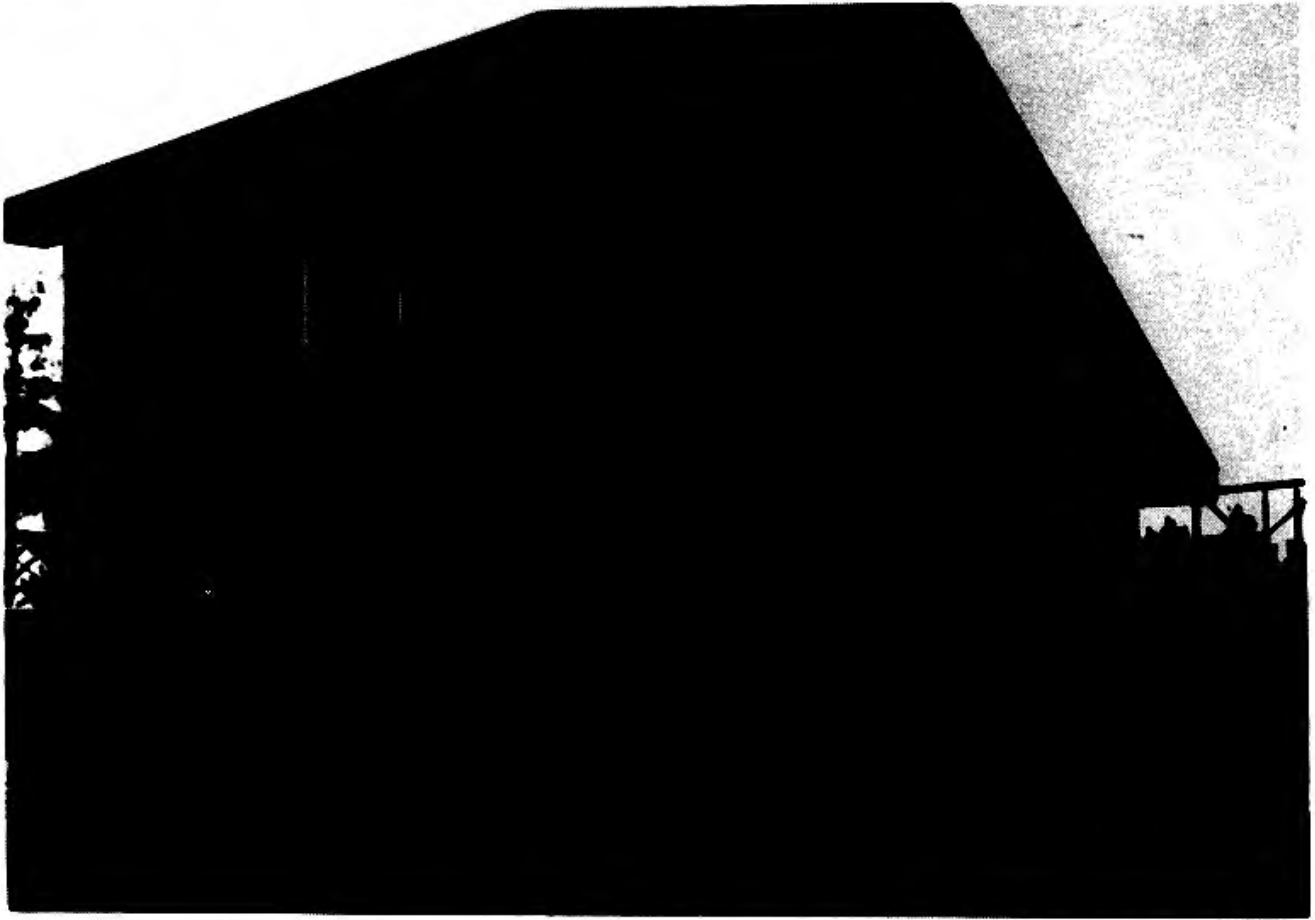


Table 7. SUMMARY OF CONSTRUCTION, CONTRACTS, AND EXPENDITURES FOR MATERIALS, EQUIPMENT, AND SUPPLIES **K. I. SAWYER AFB**

-- Fiscal Year 1991 --

CONSTRUCTION ¹	# Projects	Annualized Amount
Military Construction Programs (MCP)	3	\$ 314,500
Non-Appropriated Funds (NAF)	3	112,600
Military Family Housing (MFH)	8	2,221,200
Operations and Maintenance (O&M)	18	2,787,400
Other	2	<u>6,000</u>
Total Construction Amount		\$ 5,441,700

Note: Projects extend into two or more fiscal years. Costs shown are the percent of work completed in FY91 times the contract amount.

CONTRACTS AND PROCUREMENT: SERVICES, MATERIALS, EQUIPMENT, AND SUPPLIES

Service Contracts:

Building and Grounds ²	\$ 553,880
Telecommunications ²	84,021
Utilities and Energy ¹	5,542,431
Other Services ^{2,3}	<u>1,647,143</u>

Total Services \$ 7,827,475

Commissary, Base Exchange, Health, Education, and TDY Expenditures

Commissary ⁴ : (Total - \$11,249,904)	\$ 822,368
Base Exchange ⁵ : (Total - \$9,846,353)	2,032,830
Health (CHAMPUS - Active duty Dependents) ⁷	821,312
Education ⁶	2,630,633
TDY ⁸	36,000

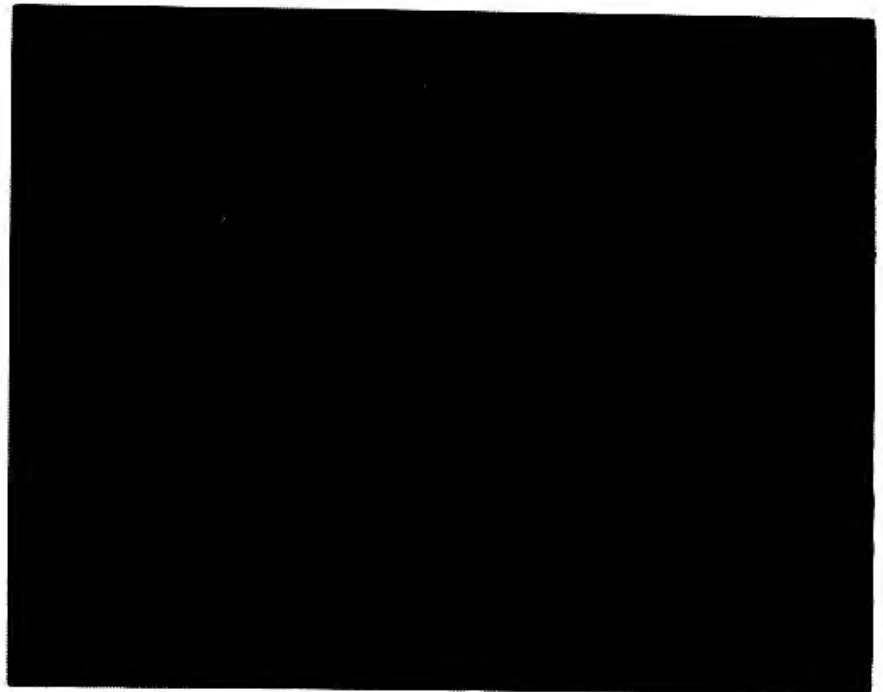
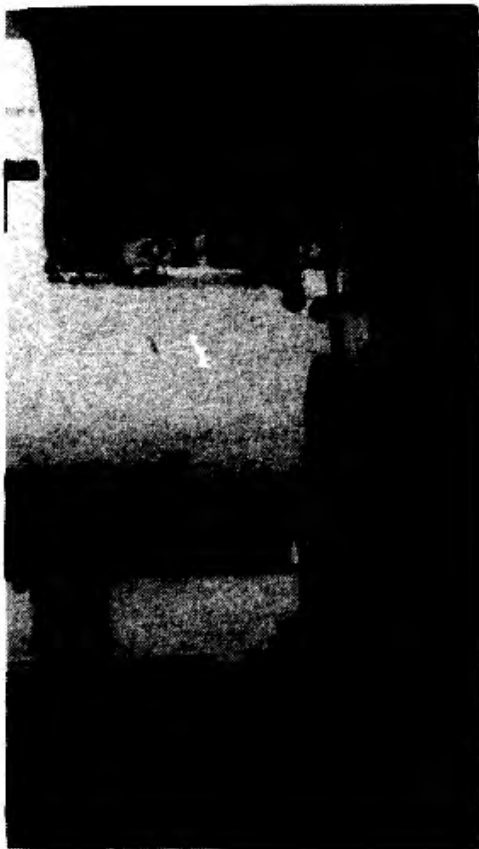
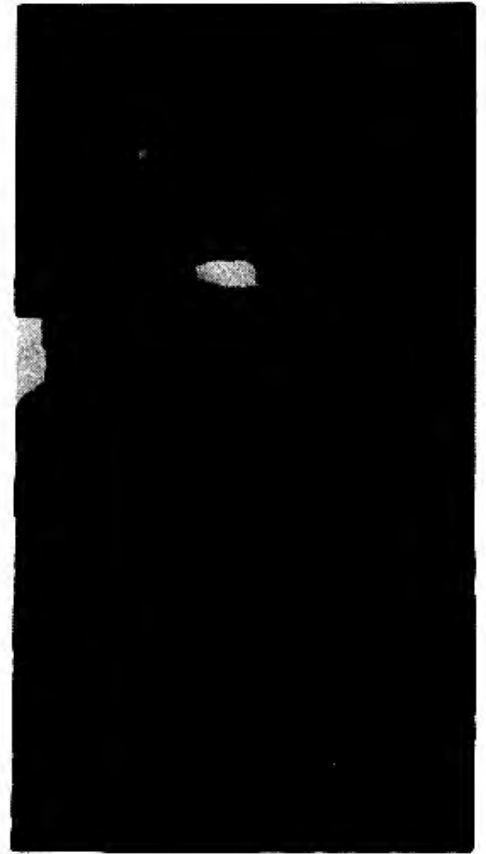
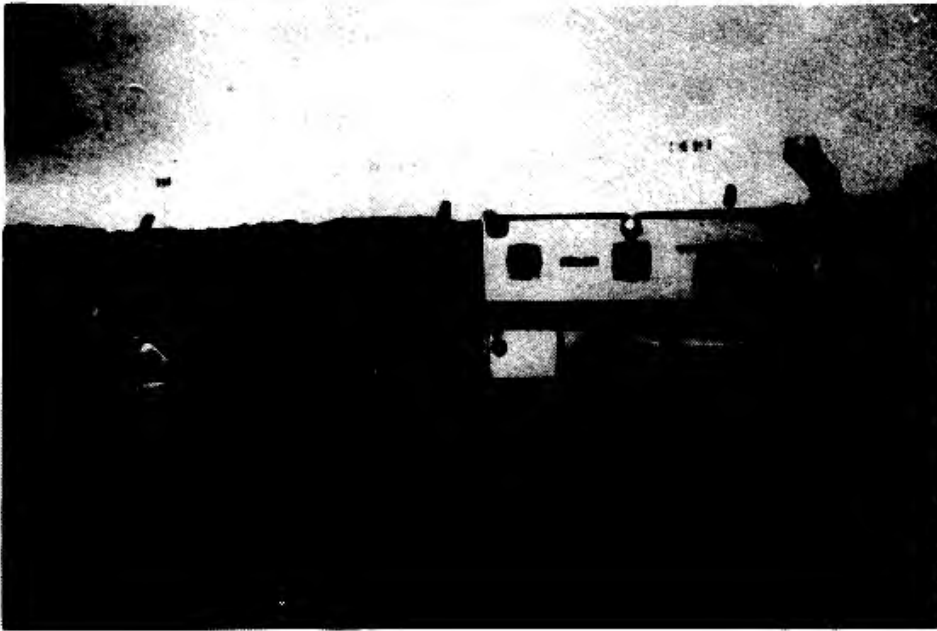
Other Materials, Equipment, and Supplies Procurement \$ 2,364,437

TOTAL EXPENDITURES \$21,976,755

* Base factors - Commissary 7.31%; BX 26%

-
- SOURCES: 1. DEE/Mr Hemmila/2393
 2. LGC/Capt Fahrenkamp/1049
 3. FMC/Mr Meese/2999
 4. FMFZ/Mrs Schopper/2351
 5. Base Exchange/Mr Carrigan/2150
 6. Gwinn Schools/Mr Yeadon/346-9283
 7. HQ SAC/FMC/MSGT Johnson/DSN 271-4392
 8. SVH/Ms Wurster/2355

Program Data



-- Fiscal Year 1991 --

FUELS¹

<u>Gallons Issued</u>	<u>Dollar Cost</u>	<u>Gallons Purchased</u>	<u>Dollar Cost</u>
35,551,114	\$37,360,601	35,890,958	\$21,642,902

UTILITY CONSUMPTION²

	<u>Consumption</u>	<u>Cost</u>
Electricity	56,806,648 KWH	\$3,106,198
Coal	6,034 TONS	392,210
Heating Oil/Propane		
FS-1	9,734 GAL	10,026
FS-2	38,878 GAL	40,044
Propane	24,725 GAL	23,953
Total Oil Propane	73,337 GAL	74,023
Natural Gas	4,247,794 CCF	1,740,272
*Water	428,357,000 GAL	67,252
Wood	7,095 TONS	162,476
TOTAL Utility Cost		\$5,542,431

* Water is pumped from on-base wells. The cost is determined by adding plant system cost, distribution system O&M cost, and electricity cost for pumping. Rate is \$.157/KGAL.

Source: 1. LGSPA/Sgt B. Neely/2510
2. DEE/Mr Hennila/2393

Table 8. PROGRAM DATA**K. I. SAWYER AFB****-- As of 30 September 1991 --****SUPPLY**

Sperry 1100/60 Computer Transactions	88,511
Number of Items Record Loaded in the Computer	48,161
Requisitions	4,210
Receipts	3,813
Local Purchase Receipts	418
Bench Stock Issues	2,634
Issues	9,110
Total Value/Supplies on Hand	\$99,055,249
Total Value/Equipment on Hand	\$ 700,197
Total Value In-Use Equip (as of Jul 91)	\$102,277,100
General Support Division Stock Fund	\$ 3,636,263

TRANSPORTATION**Personal Property Shipments**

Received	1,467
Shipped	1,516
Montemporary Storage	172

Passenger Travel

Total Passengers Moved	1,899
------------------------	-------

Vehicles Assigned

General Purpose	283
Special Purpose	141
Base Maintenance	68
Material Handling	30
Total Vehicles	522

SOURCE: 1. LCSP-2/Gail Graham/2081
2. LGTT/MSGT Ables/2583

Table 8. PROGRAM DATA

K. I. SAWYER AFB

-- As of 30 September 1991 --

EDUCATION

Northern Michigan University

	Fall	Winter	Summer/ Spring
Courses offered	26	26	21
Undergraduate Students			
Military	180	205	116
Military Family Member	73	76	37
Civilian	<u>67</u>	<u>41</u>	<u>118</u>
Total	320	322	271
Graduate Students			
Military	24	23	26
Military Family Member	2	1	5
Civilian	<u>26</u>	<u>18</u>	<u>22</u>
Total	52	42	53
Total Students by Semester	372	364	324
Total Number of Enrollments	536	520	403
Credit Hour Production			
Undergraduates	1,673	1,754	1,186
Graduate	<u>340</u>	<u>190</u>	<u>274</u>
Total	2,013	1,944	1,460
Tuition Revenue			
Undergraduates	\$127,604	\$122,605	\$82,901
Graduate	<u>33,031</u>	<u>16,910</u>	<u>24,386</u>
Total	\$160,635	\$139,515	\$107,287

Total amount of tuition assistance provided to active duty members for FY91 was \$210,382.

SOURCE: MSSQ/MSE/Mr Holman/2416

**Page 26 is missing from
the microfiche copy.**

Table 8. PROGRAM DATA

K. I. SAWYER AFB

-- As of 30 September 1991 --

ENLISTED - EDUCATION

AGE	CHIEF MASTER SERGEANT	SENIOR MASTER SERGEANT	MASTER SERGEANT	TECHNICAL SERGEANT	STAFF SERGEANT	SERGEANT
17-20	0	0	0	0	0	11
21-25	0	0	0	2	164	343
26-30	0	1	20	128	431	78
31-35	0	7	103	170	112	6
36-40	4	19	93	71	17	0
41-45	5	7	6	4	3	0
46-60	0	0	0	0	0	0

YEARS OF
SERVICE

0-4	0	0	0	0	57	354
5-10	0	0	10	95	543	84
11-15	0	4	102	219	104	0
16-20	2	19	103	60	13	0
21-25	7	11	7	0	0	0
26-30	0	0	0	0	0	0
31-50	0	0	0	0	0	0

DEGREE HELD

SOME HS	0	0	0	3	2	1
HS GRAD	0	1	13	65	112	107
15-59*	0	6	97	209	495	295
60-89*	4	7	36	47	51	20
90+ *	0	0	3	2	7	1
ASSOCIATE	4	14	56	35	35	4
BACHELORS	0	4	16	12	15	10
MASTERS	1	2	1	2	0	0
OTHER	0	0	0	0	0	0

* Number of semester hours toward a degree.

Other = GED, GED equivalent or Masters+

HS = High School

SOURCE: MSSQ/MSE/Mr Holman/2416

-- As of 30 September 1991 --

ENLISTED (Cont'd)

	SENIOR AIRMAN	AIRMAN FIRST CLASS	AIRMAN	AIRMAN BASIC
AGE				
17-20	151	359	139	19
21-25	154	108	12	3
26-30	11	5	2	0
31-35	1	0	0	0
36-40	0	0	0	0
YEARS OF SERVICE				
0-4	314	470	153	22
5-10	3	2	0	0
11-15	0	0	0	0
16-20	0	0	0	0
DEGREE HELD				
SOME HS	1	1	0	0
HS GRAD	93	246	125	20
15-59*	206	201	26	2
60-89*	13	12	0	0
90+ *	1	4	0	0
ASSOCIATE	4	5	2	0
BACHELORS	0	3	0	0
MASTERS	0	0	0	0
OTHER	0	0	0	0

* Number of semester hours toward a degree.
 Other = GED, GED equivalent or masters+
 HS = High School

SOURCE: MSSQ/MSE/Mr Holman/2416

-- As of 30 September 1991 --

GWINN SCHOOLS (90-91 School Year)¹

Dependents Residing On Base	Students	Revenue
Regular	1,171	\$2,379,760
Special Education	64	228,148
Total	1,235	2,607,908
Dependents Residing Off Base		
Uniformed	244	10,048
Civilian	168	6,938
Special Education	14	5,739
Total	426	22,725
Grand Total	1,661	\$2,630,633

HOSPITAL DATA ²

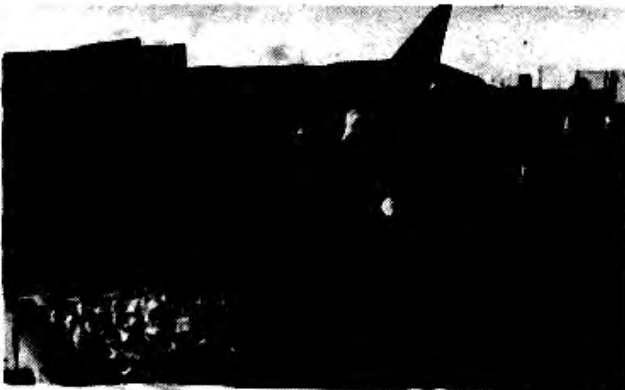
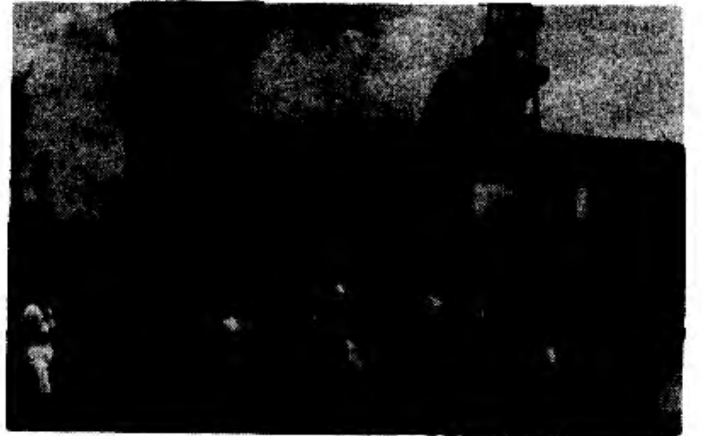
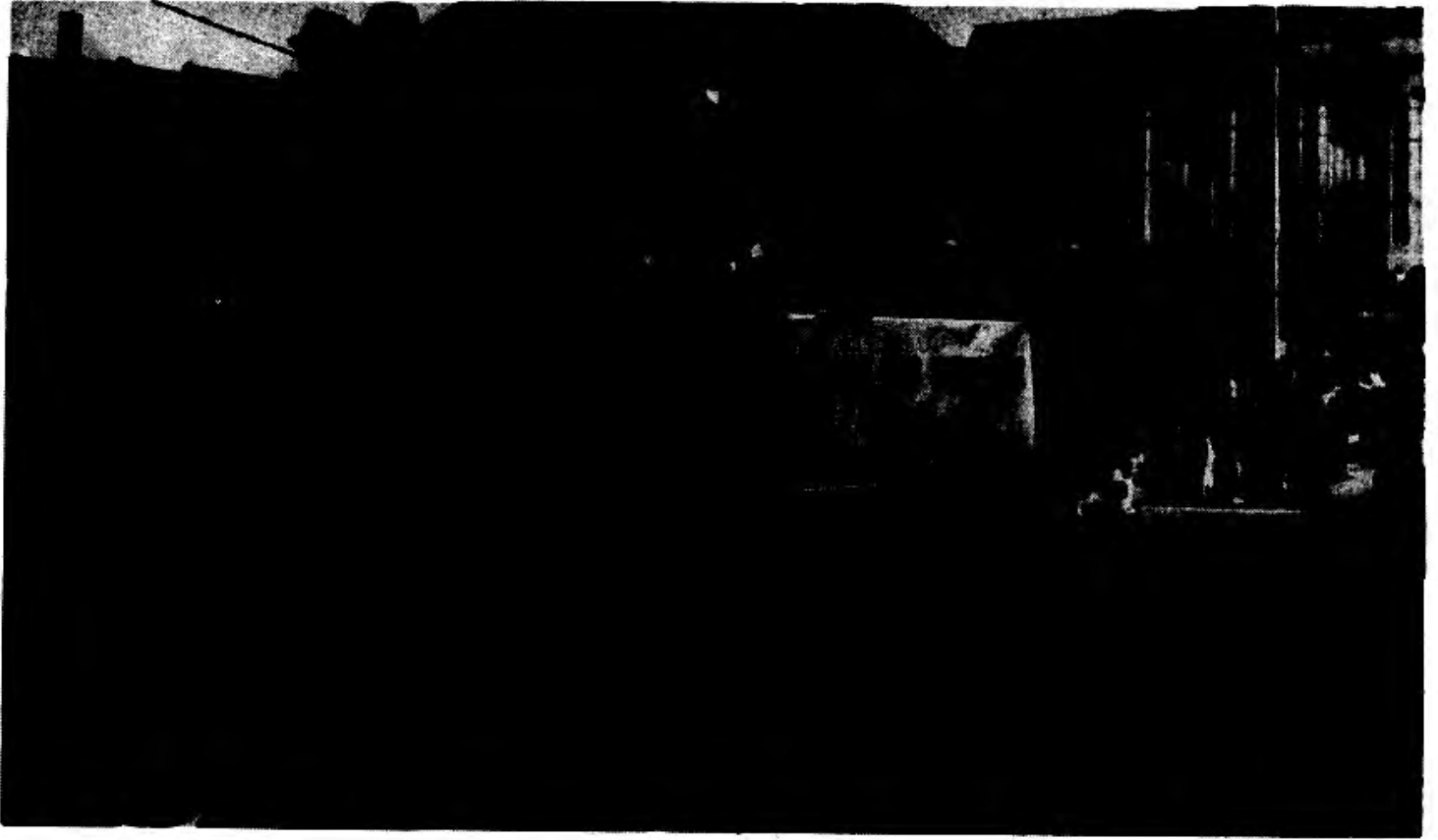
Operating Expenses (000):	FY91
Civilian Pay	\$ 797,210
Military Pay	4,934,929
Supplies	1,450,384
Equipment	52,468
Contract Services	698,841
CE Cost, Utilities	462,469
Investment Equipment	138,100
Other Costs	1,110,928
Total	\$ 9,645,329

Usage (000):

Population Served	9,034
Number of Outpatient Visits	98,376
Number of Prescriptions Filled	182,040
Admissions	1,116
Medical Air Evacuations	1,126
Number of Immunizations	15,276
Number of X-rays	22,008
Bed Authorization	15
Births	324
Operations Performed	624
Physical Therapy Treatments	7,359
Lab Procedures	240,408

SOURCE: 1. Gwinn Schools/Mr Yeadon/346-9283
2. SGAM/Ms Prellwitz/2733

Community Projects



-- As of 30 September 1991 --

COMMUNITY PROJECTS**Combined Federal Campaign**

- The CFC drive, which ended 19 Oct 90, raised \$104,095 or 100% of the base goal.

Base tours/Community Events

- The annual Open House and Air Show held in June 1991, drew a record crowd of 90,000 people. The Thunderbirds and the Golden Knights performed.
- Base units hosted six squadron open houses.
- During FY 91, 1529 people participated in 263 base tours.
- The annual Chamber of Commerce Chicken Barbecue was held in August.
- The base hosted approximately 300 people participating in the Upper Peninsula Class E Women's Softball Tournament in August.
- The base hosted the Upper Peninsula Summer Sports Festival's racquetball tournament with 50 participants, women's softball tournament with 120 participants and the golf tournament with 75 participants.
- The base hosted the Commander's Invitational Golf tournament with 130 participants.
- The base hosted the Jack Larson Memorial Golf tournament with 168 participants.
- The base hosted a Global Volksmarch/Oktoberfest in Sep 91. Ninety five participated.
- The base hosted the regional Veteran of Foreign Wars meeting in July.
- Over 70 local businesses gave discounts to families of people deployed with Operation Desert Storm.
- Veteran's associations joined the base in a POW/MIA Day ceremony in September.

Other

- The Air Force Assistance Fund raised \$28,049 or 108% of the base goal.
- Operation Warmheart, operated by the Base Chapel, donated \$6,330 in cash, 450 pounds of toys and 7,500 pounds of food to military families in need.

-- As of 30 September 1991 --

COMMUNITY PROJECTS (CONT)

National Level Organizations Involving Base Personnel

- Kiwanis
- Lions Club
- Masonic Lodge
- American Legion
- Knights of Columbus
- Daedalians
- Cub/Boy Scouts
- Explorer Scouts
- Young Astronauts
- Air Force Association
- Veterans of Foreign Wars
- Association of Snow Crows
- Air Force Sergeants Association
- Company Grade Officers' Association
- Noncommissioned Officers' Association
- Society of Aviation Flight Enthusiasts
- American Society of Military Comptrollers
- American Red Cross

SOURCE: PA/SSgt Roth/1041

Morale, Wellness, & Readiness



-- Fiscal Year 1991 --

MWR FUND

	INCOME	EXPENSES	NET INCOME
Administration	\$245,593	\$258,687	\$<13,094>
Athletic Facilities	30,899	47,477	<16,578>
Arts and Crafts	151,345	164,483	<13,138>
Bowling Center	465,825	371,221	94,604
Child Development Center	415,030	507,328	<92,298>
Family Services	1,335	5,993	<4,658>
Golf Facilities	265,879	211,838	54,041
Library	18,132	28,650	<10,518>
Outdoor Recreation	25,456	52,541	<27,085>
Community Activity Center	89,957	85,183	4,774
Supply Services	57,251	35,862	21,389
Unit Funds	460	1,429	<969>
Veterinary Services	40,602	28,618	11,984
Youth Activities	67,546	83,309	<15,764>
Miscellaneous	13,287	23,322	<10,035>
Special	0	1,793	<1,793>
Other *	78,113	14,826	63,288
Officers' Club	342,756	318,833	23,923
NCO Club	<u>1,313,516</u>	<u>1,267,057</u>	<u>46,459</u>
Total MWRF **	\$3,622,982	\$3,508,450	\$114,532
Less Loan Payments			<84,357>
Less NAF Capital Asset Purchases			<51,409>
Balance			<u>\$<21,234></u>

* Class VI income received reflected here.

** Includes \$100,000 Memo of Agreement income.

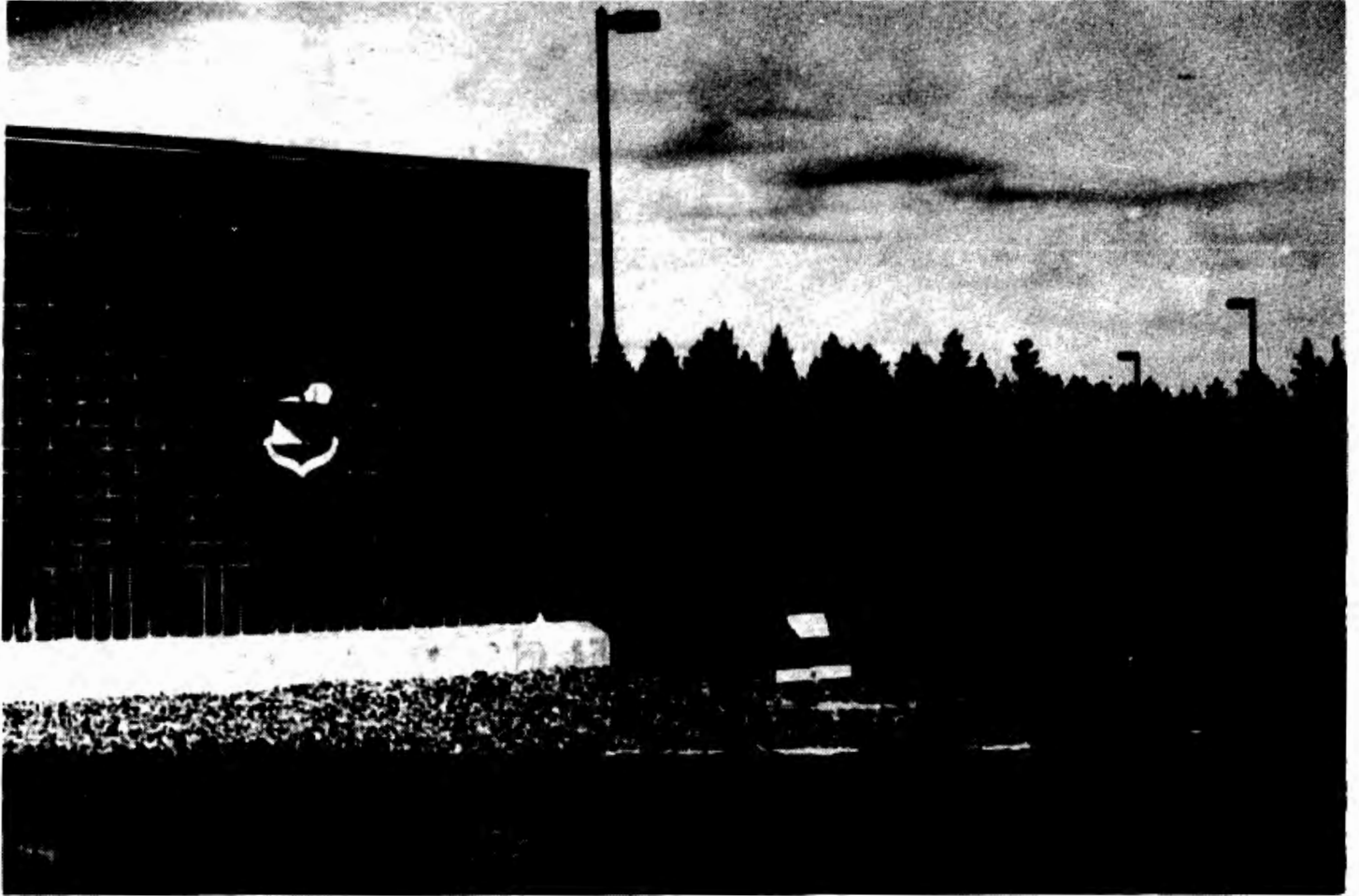
BASE BILLETING FUND \$390,099 \$323,983 \$66,116

MWR CASH FLOW

Net Income		\$114,532
Add Back:		
Depreciation Expenses		147,920
Construction-in-Progress and Grants		97,036
Less:		
Purchases of Capital Assets		51,409
Loan Payments		84,357
Net Changes in Assets & Liabilities		177,582
Memorandum of Agreement Reimbursements		<u>100,000</u>
Decrease in Cash for FY91		\$<53,860>

SOURCE: FMC/Mr Meese/2999

ECONOMIC IMPACT



SUMMARY

ECONOMIC IMPACT

In Fiscal Year 1991, K. I. Sawyer AFB had a total economic impact (TEI) of \$136,104,733 in the EIR. Secondary jobs created off base totaled 895. The figures are based on salaries, expenditures for contracted services, construction, education, health care, and temporary duty expenses in the local area.

The data from tables one through seven is consolidated into a three-part calculation procedure. Part one summarizes the data and applies the appropriate adjustment factors. One factor is the average propensity to consume (APC). Military and civilian payrolls originating on an Air Force base are not consumed entirely within the EIR. Instead, a percentage of payroll is lost to savings, withholding, and purchases made outside the EIR. Another percentage is spent on the military installation itself. The portion of income spent within the EIR is called the APC. Military personnel residing on base spend 42 percent of their income in the EIR. Military personnel residing off base spend 57 percent of their income in the EIR. Civilians spend 62 percent of their income in the EIR. The APC is taken from a 1988 survey of Air Force employees and is applicable to the local area. Other factors included in the calculations are based on the U.S. Department of Commerce National Input and Output Structure of the U.S. Economy, 1977.

Part two of the calculation procedure computes the total economic impact and the secondary jobs created in the EIR. Adjusted totals of K. I. Sawyer's expenditures are multiplied by 2.0049, the base gross income multiplier. A single dollar may be spent in the local area numerous times. The gross income multiplier is the sum of the "rounds" of re-spending. Secondary jobs are the result of the adjusted totals multiplied by the income multiplier and divided by sales per worker in the trade/service sector or wholesale sector.

Part three is the employment supported by the annual expenditures to operate K. I. Sawyer AFB. It combines base appropriated fund employment, secondary jobs created off base within the EIR, and non-appropriated fund and Base Exchange employees. K. I. Sawyer supported 5,514 jobs in FY 91.

The following pages show the calculations for the three parts. As the calculations show, K. I. Sawyer AFB has a measurable economic impact on the local community.

PART 1: DATA SUMMARY AND ADJUSTMENT

K. I. Sawyer AFB

-- As of 30 September 1991 --

VARIABLE NAME	ANNUALIZED AMOUNT	ADJUSTMENT FACTORS	LOCAL AMOUNT	ERIS VARIABLE
I. APPROPRIATED FUND PAYROLL				
Military on-base	41392423	0.422	17467603	Ymon
Military off-base	42441210	0.579	24149048	Ymoff
Civilian	11325593	0.623	7055844	Ycs
II. NONAPPROPRIATED FUND (NAF) AND OTHER CIVILIAN PAYROLL				
Civilian NAF/BX	3132261	0.623	1951399	Ycx
Contract Civilian		0.623	0	Ycc
Other Civilians		0.623	0	Yco
Estimated payroll expenditures off-base in EIR (Ymon + Ymoff + Ycs + Ycx + Ycc + Yco)			50623894	RPAY
III. CONSTRUCTION AND SERVICES				
		Labor Share x APC		
Total Construction	5441700	0.239232	1301829	Ycon
Total Services	7827475	0.326452	2555295	Ys
Commissary/BX	2855198	1.00	2855198	C
Health	821312	1.00	821312	H
Education	2630633	1.00	2630633	E
TDY	36000	1.00	36000	T
Estimated Labor and Svcs Off-Base In EIR (Ycon + Ys + C + H + E + T)			10200267	RCONS
IV. MATERIALS, EQUIP, AND SUPPLIES (MES)				
		MES Share		
Total Construction	5441700	0.600	3265020	Mc
Total Services	7827475	0.183	1432428	Ms
Other Materials, Equip, & Supplies	2364437	1.00	2364437	AFMAT
Estimated Materials and Equip Expenditures Off-base in EIR (Mc + Ms + AFMAT)			7061885	RMAT
V. TOTAL AF BASE EXPENDITURES IN EIR (RPAY + RCONS + RMAT)			67886046	RTOT

-- As of 30 September 1991 --

1. Estimated total economic installation's annual operation expenditures

M = 2.0049
Prs = 84337
Pw = 285118

TEIeir = RTOT x M
TEIeir = 67886046 x 2.0049
TEIeir = 136104733

2. Secondary jobs created off base in the EIR

	SJC =	$\frac{\text{RPAY} \times (\text{M}-1)}{\text{Prs}}$	+	$\frac{\text{RCONS} \times \text{M}}{\text{Prs}}$	+	$\frac{\text{RMAT} \times \text{M}}{\text{Pw}}$
		50623894		10200267		7061885
		x (M-1)		x M		x M
	SJC =	$\frac{50623894}{84337}$	+	$\frac{10200267}{84337}$	+	$\frac{7061885}{285118}$
		50871951		20450515		14158373
		84337		84337		285118
	SJC =	$\frac{50871951}{84337}$	+	$\frac{20450515}{84337}$	+	$\frac{14158373}{285118}$
		603	+	242	+	50
	SJC =	895				

**PART 3: SUMMARY OF JOBS SUPPORTED BY ANNUAL
OPERATION EXPENDITURES**

K. I. Sawyer AFB

-- As of 30 September 1991 --

1.	Base appropriated fund employment:		
	Military (Table 5)	3303	MIL
	Civilian (Table 5)	492	CIV
	Contract Civilian, (Table 5)	437	
2.	SJC Employment from Annualized Base Operation Expenditures:		
	SJC off-base within EIR (Equation 2)	895	SJC
	NAFBX employment (Table 5)	387	NAFBX
3.	Employment supported by annual expenditures to operate the AF installation: (MIL + CIV + NAFBX + SJC + Contract Civilian, Other Civilian)	5514	

-- As of 30 September 1991 --

AFMAT	Other procurement (materials, equipment and supplies) expenditures within the EIR.
C	Commissary procurement in the EIR.
E	Education impact funds.
H	Local health expenditures (Champus funds).
M	Gross income multiplier.
Mc	Materials and supplies component of construction contracts. The material share of 60% is based on section 12.0212, U.S. Dept of Commerce National Input/Output Structure, 1977.
Ms	Materials and supplies component of service contracts. The material share of 18.3% is based on section 73.0102, U.S. Dept of Commerce National Input/Output Structure, 1977.
Prs	Sales per worker in the trade/service sector.
Pw	Sales per worker in the wholesale sector.
RCONS	$Y_{con} + Y_s + C + E + H + T$
RMAT	$Mc + Ms + AFMAT$
RPAY	$Y_{mon} + Y_{moff} + Y_{cs} + Y_{cc} + Y_{co} + Y_{cx}$
RTOT	Initial expenditure remaining in the EIR from AF installation total EIR procurements, construction, and income expenditure.
SJC	Secondary jobs off base in the EIR created by AF base EIR expenditures (not including military or NAF, AAFES, contract civilians, and other civilians, employed by the installation.)
T	Local TDY expenditures off base in the EIR.
TEIeir	Total economic impact in the EIR (including direct, indirect, and induced effects) of the AF installation EIR expenditures.
Ycc and Yco	Civilian payroll spent in the EIR by the AF installation contract civilians and other civilian personnel.
Ycon	Income spent in the EIR from payroll component of the construction contract expenditures. Based on a labor share of 38.4% for sector 12.0212, U.S. Dept of Commerce National Input/Output Structure, 1977, and assumes and APC of 0.623.

-- As of 30 September 1991 --

- Ycx and Yce** **Civilian payroll spent in the EIR by base civilian personnel including NAF, AAFES, and civil service employees. (Note: Does not include income of civilians in private sector businesses located on base such as branch banks and commercial food establishments.)**
- Ymon** **Military payroll spent in the EIR by military permanent party and trainees living on base.**
- Ymoff** **Military payroll spent in the EIR by AF installation military personnel living off base.**
- Ys** **Income spent in the EIR from payroll component of service contracts. Based on a labor share of 52.4% for sector 73.0102, U.S. Dept of Commerce National Input/Output Structure, 1977, and assumes an APC of 0.623.**

DISTRIBUTION

CIVILIAN

Governor, State of Michigan
U.S. Senator (2)
U.S. Representative, 11th District
State Senator (2)
State Representative (3)
Marquette City Manager
Mayor of Marquette
Marquette Chamber of Commerce (5)
Iron County Clerk
Baraga County Clerk
Alger County Clerk
Mayor of Iron Mountain

Mayor of Negaunee
Mayor of Ishpeming
Mayor of Escanaba
Forsyth Twsp Supervisor
Sands Twsp Supervisor
West Branch Twsp Supervisor
Economics Club of Marquette
Marquette Jaycees (5)
Delta County Clerk
Dickenson County Clerk
Schoolcraft County Clerk
Mayor of Munising

DEPARTMENT OF DEFENSE

HQ SAC/FMC (12)	410 WG/CC	410 MEDGP (2)	644 BMS/CC
8 AF/FMC	410 WG/CV	410 MSSQ/CC	46 AREFS/CC
AFAA Office	410 WG/OPG	410 MSSQ/MSI	410 LGF/CC
SACMET	410 WG/LG	410 MSSQ/MSP	410 LGW/CC
AFOSI, DET 512	410 WG/FM	410 SPTG/CC	410 LGS/CC
U.S. ARMY CORPS OF ENGINEERS	410 WG/HO (4)	410 SPTG/CD	410 LGT/CC
	410 WG/LGC	410 SPTG/MW	410 CES/CC
AAFES	410 WG/LGX	410 SPTG/DW	410 SPS/CC
SATAF	410 WG/PA (80)	410 SPTG/HC	410 SVS/CC
410 LSS/CC	410 OSS/CC	410 WG/JA	410 CS/CC

