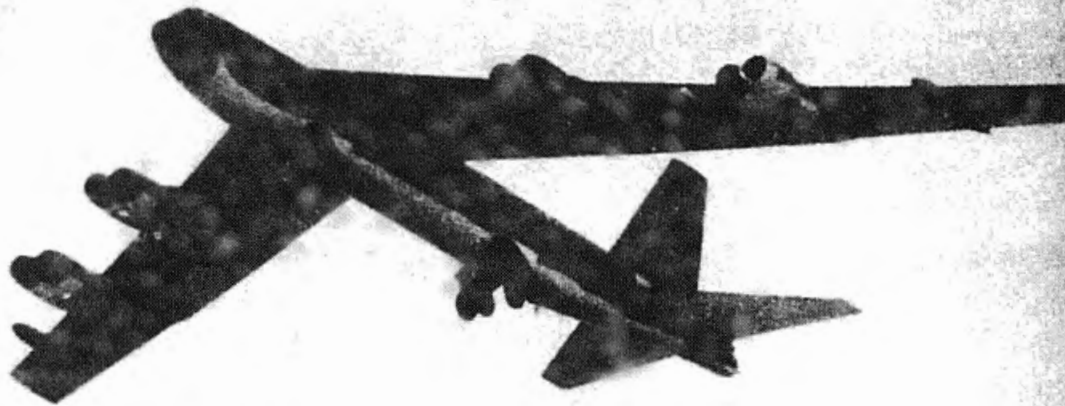


APR 6 1989

D301.105:988

4161-E-07

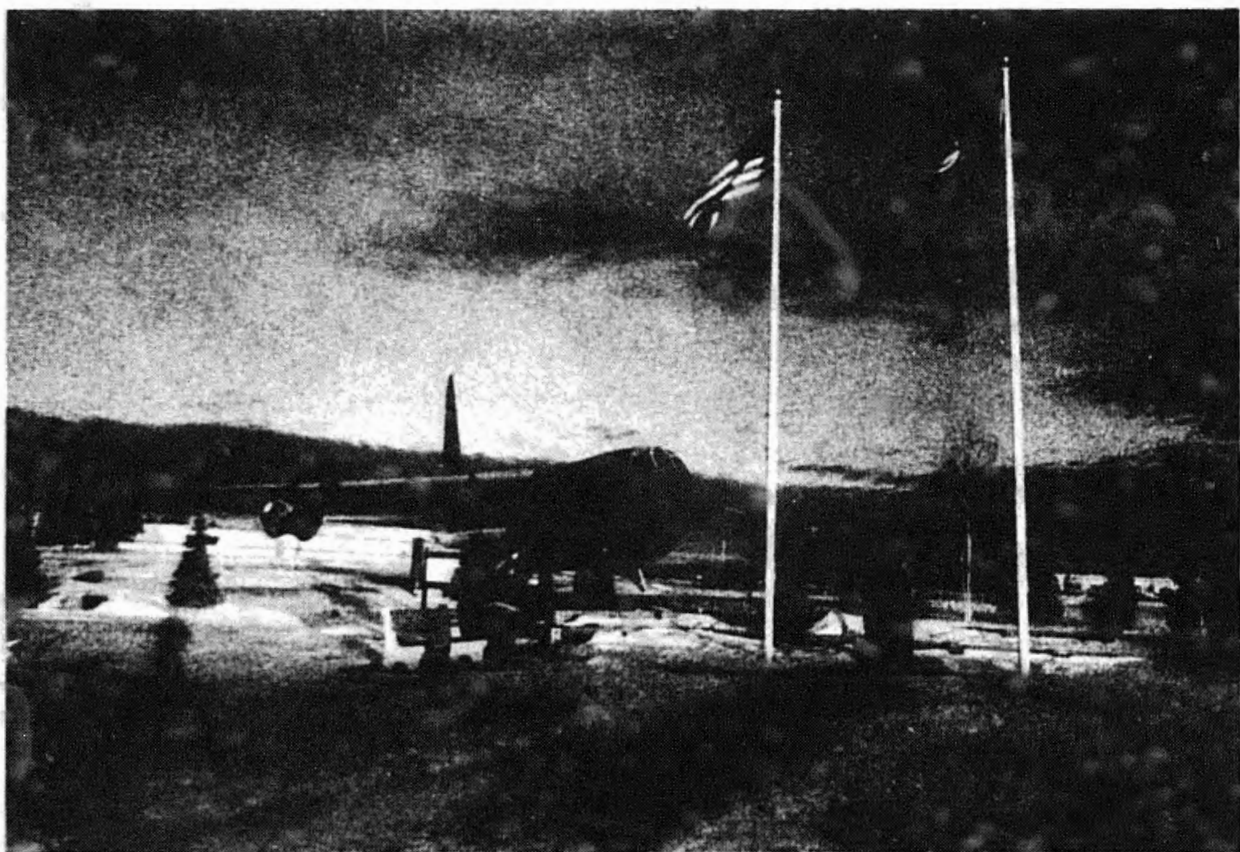
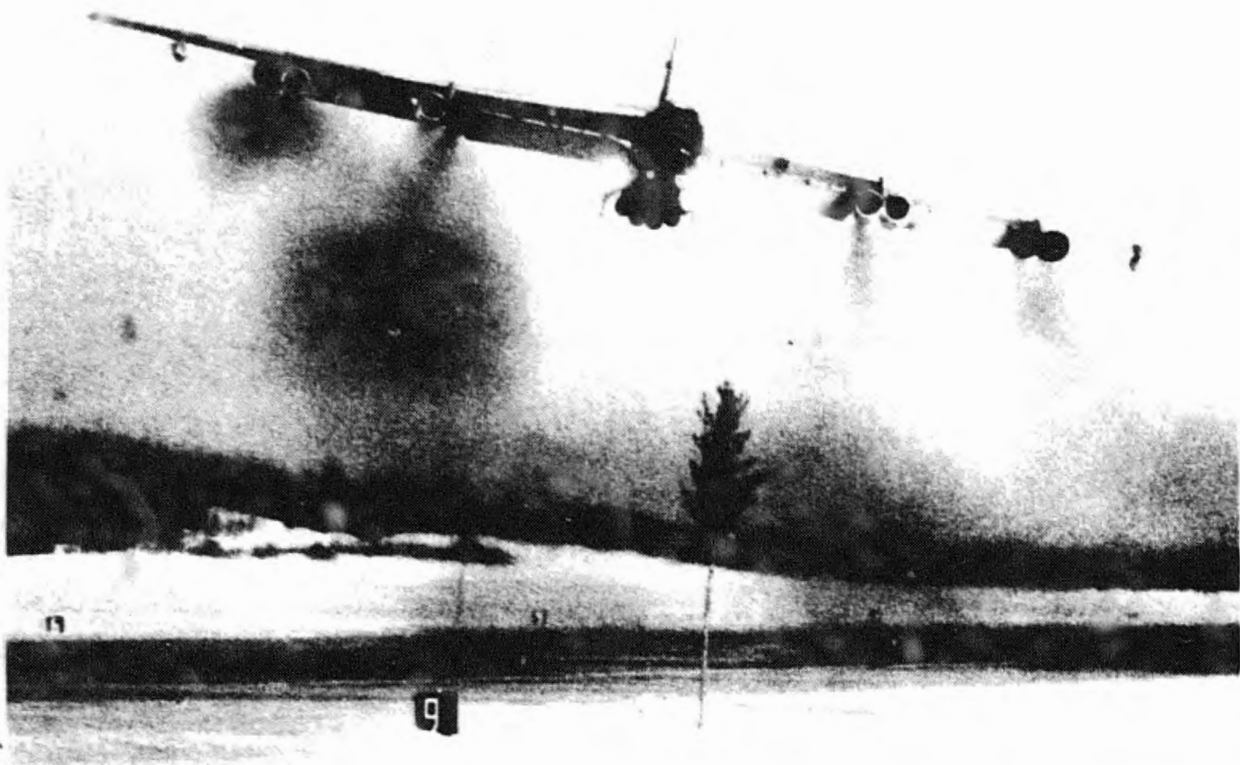
K. I. SAWYER AFB, MI



**ECONOMIC RESOURCE
IMPACT STATEMENT
FY88**

R/A

COMPLETED





DEPARTMENT OF THE AIR FORCE
HEADQUARTERS 410TH BOMBARDMENT WING (SAC)
K I SAWYER AIR FORCE BASE, MICHIGAN 49843-5000



09 JAN 1989

REPLY TO: CC
ATTN. OF:

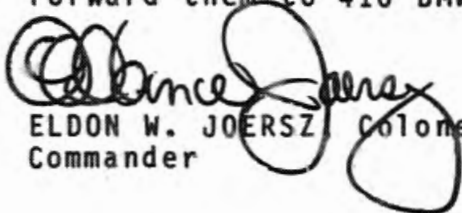
SUBJECT: Economic Resource Impact Statement (ERIS)

TO: See Distribution

1. K. I. Sawyer AFB has been a vital part of the Strategic Air Command for over 30 years as a deterrent to attacks on the United States. During this period, the people of K. I. Sawyer have enjoyed a healthy relationship with the local community and have been welcomed not only from an economic standpoint, but on a personal and social level as well. This relationship has enhanced our ability to accomplish our mission and has improved the quality of life for everyone in the region.

2. We publish the Economic Resource Impact Statement once each fiscal year to inform public officials and visitors about the impact of base resources on the local community and surrounding geographical area.

3. The Cost Branch of the 410th Comptroller Squadron prepares and distributes the ERIS. Questions regarding this publication may be addressed to the Cost Branch by phoning 1-906-346-2999 (Autovon 472-2999). We welcome your comments or ideas for improvement, and you can submit them by filling out the critique on the last page. Forward them to 410 BMW/ACC, K. I. Sawyer AFB MI 49843-5000.



ELDON W. JOERSZ, Colonel, USAF
Commander



PREFACE

The 410th Comptroller Squadron Cost Branch prepares the Economic Resource Impact Statement annually in accordance with Air Force Regulation 170-4. The information in this statement is as of 30 September 1988 and includes information on host and tenant units assigned to K. I. Sawyer AFB, unless otherwise noted.

A special thanks goes to the 410th Combat Support Group Visual Information Support Center and the 410th Bombardment Wing Public Affairs Division for outstanding support. Also special thanks to all the offices which supplied us with the source data needed to make this book possible.

COST BRANCH STAFF

2d Lt John R. Shields
MSgt David W. Shults
SSgt Lisa M. Clark

Chief, Cost Branch
NCOIC, Cost Branch
Cost Analyst

TABLE OF CONTENTS

Commander's Statement	1
Preface	11
Cost Branch Staff	11
Table of Contents	1
Mission	2
410th Bombardment Wing Emblem	3
History of The 410th	4-5
History of K. I. Sawyer AFB	6-7
Wing Awards	8-11
Economic Impact Region	12
Organizations	13
Force Structure	14-15
Program Data	
Fuels and Energy	17
Transportation and Supply	18
Gwinn Public Schools	19
Northern Michigan University	20
Officer Education	21
Enlisted Education	22-23
Hospital Data	24
Community Projects	25
Capital Assets	
Buildings and Land	27
Data Processing and Navigation	28
Communications	29
Resources	30
Expenditures	31
Personnel	32
Organizational Data	33
Payroll	34
Contracts	35
Morale, Wellness, Readiness	36
Construction	37
Economic Impact	38-40
Secondary Jobs Created	41
Glossary of Terms	42-43
Distribution	44
Critique	

MISSION

The primary mission of the 410th Bombardment Wing is to serve as a deterrent to attacks on the United States by maintaining a state of readiness in order to permit immediate retaliatory operations against its adversaries. We must be prepared to perform assigned tasks as stated in Emergency War Orders and related taskings. This is accomplished by implementing maintenance and logistical procedures to keep the assigned B-52H bombers and KC-135A tankers in a safe operational condition. Combat crews are maintained in a high state of readiness through comprehensive air and ground training programs.



410th BOMBARDMENT WING EMBLEM

The emblem is symbolic of the Wing and its mission, with the stars symbolic of the World War II history of the 410th Bombardment Group. The blue background alludes to the sky - the primary theater of Air Force operations with light and deep shades referring to day and night maintenance of peace. The globe signifies the unit's world-wide capabilities, while the winged bomb depicts the type of unit, and the Air Force blue stars at the four and ten o'clock positions depict the numerical designation. A total of twenty stars symbolize the A-20 Havoc Bomber utilized by the 410th Bombardment Group during World War II. The twelve stars encircling the globe represent the variety of equipment destroyed by the 410th. The three stars on the lightning bolt signify the missions against the V-1 weapon sites, the Presidential Distinguished Unit Citation awarded, and the six campaign participation credits earned. The lightning bolt symbolizes the Air Force Outstanding Unit Award awarded to the Wing in 1963. The emblem bears the Air Force colors, golden-yellow and ultramarine blue, and the national colors, red, white, and blue.



HISTORY OF THE 410th

The 410th and its four bombardment squadrons - the 644th, 645th, 646th, and 647th - were activated on 1 July 1943 and assigned to Will Rogers Field, located near Oklahoma City, Oklahoma, for initial training in the Douglas A-20 "Boston" attack bomber.

After three months at Will Rogers, the 410th moved to Muskogee Army Airfield at Muskogee, Oklahoma, for advanced training. The group flew around the clock, accumulating hundreds of low-level training hours in preparation for what the men assumed would be the eventual deployment of the group to the Pacific. It was at Muskogee that the 644th applauded itself as the "Best Damn Bomb Squadron in the World" - a claim held in something more than mild dispute by the other three squadrons.

The 410th arrived at Laurel, Mississippi, on 5 January 1944 but remained there only a month. Mud, heavy fog, and smoke from nearby factories prevented the accomplishment of all but a minimum of training, and in early February the group moved to Lakeland Army Airfield at Lakeland, Florida.

In its five-week stay at Lakeland, the 410th completed bombing and gunnery training and then turned to simulated combat missions complete with briefings, interrogations, mission reports and critiques. The fliers spent some 3,300 hours in the air and in early March were pronounced ready for combat and overseas deployment - to Europe.

From Lakeland, the men journeyed by train to Camp Kilmer, New Jersey, for four days of processing. The 410th arrived in New York City on 21 March and boarded the *Saturnia*, an Italian merchant ship that had escaped from Trieste and evaded German bombers. The *Saturnia* sailed out of New York on 23 March with approximately 3,600 men aboard.

The *Saturnia* crossed the Atlantic without incident and anchored off Britain's coast in the Firth of Clyde on 2 April 1944. The men went ashore the next day and boarded a train for Birch, England, arriving on 4 April 1944. After a short stay at Birch, the group moved to Gosfield, England, where it saw its first action on 16 April.

The 410th and its A-20s went into combat on 4 May as part of the Ninth Air Force and for the next month bombed coastal defenses, airfields, V-weapon sites and marshalling yards in advance of the Normandy Invasion. On D-Day and after, the 410th became heavily involved in the assault against the Fortress of Europe.

On 18 September the group crossed the English Channel and settled into its next location at Maisoncelles, France, on 27 September. From Maisoncelles, the 410th attacked defended villages, railroad bridges and overpasses, marshalling yards, military camps, and communication centers in support of the assault against the Siegfried Line. In late December the 410th flew 411 sorties against the German counter offensive known as the Battle of the Bulge. They hit marshalling yards, bridges, railheads, and vehicles during the battle.

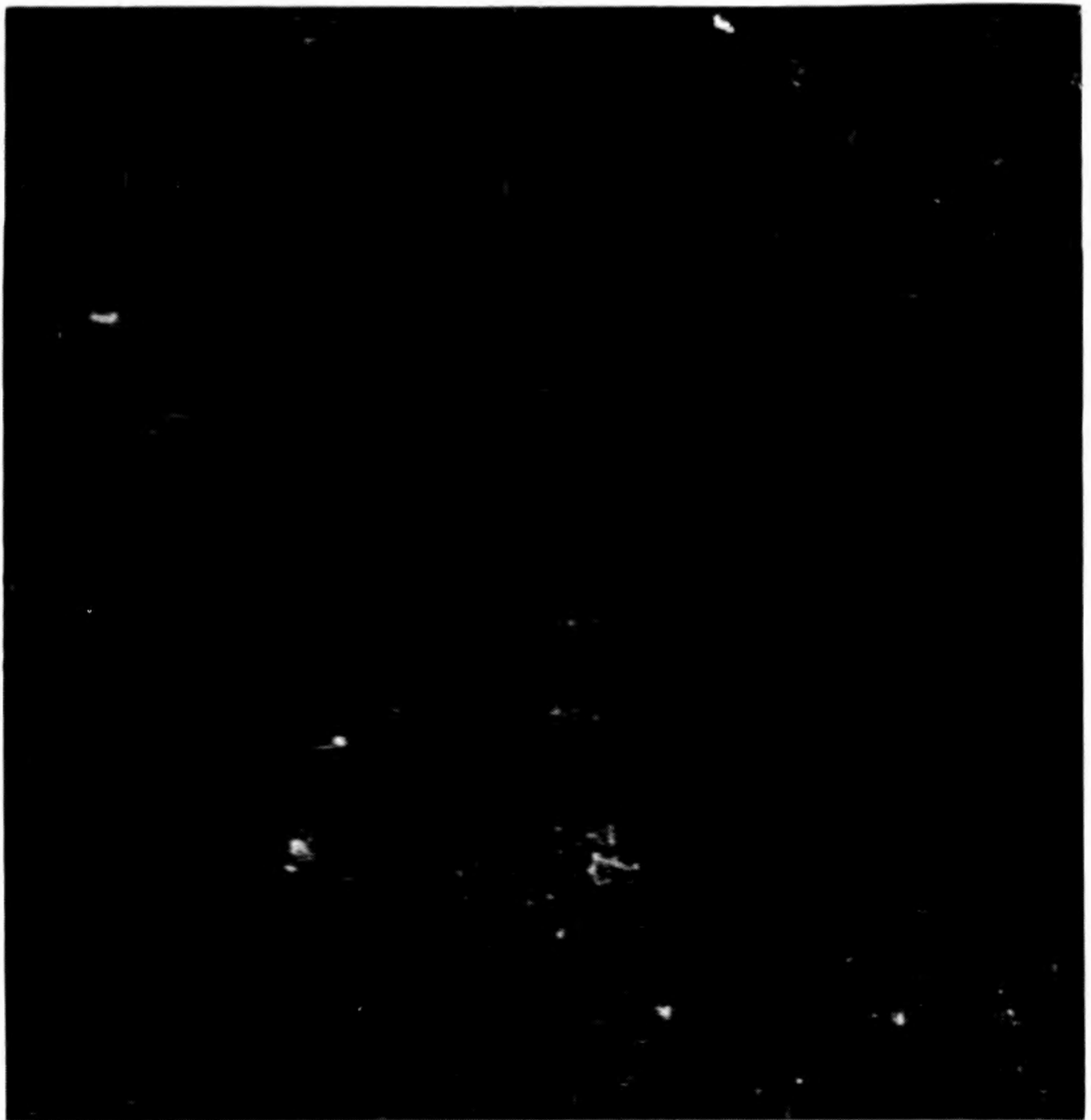
In the Ardennes, the 410th proved to be especially effective; so much so that the group received the Presidential Distinguished Unit Citation for its missions in that area on 23, 24, and 25 December 1944.

With the Germans' last big gasp stifled, the 410th advanced to Rheims, France, on 9 February 1945. From Rheims, the 410th bombed industrial targets such as jet engine plants and ordinance depots along the Ruhr and deep inside Germany. On 25 April 1945, the 410th flew its final combat mission of the war. The target was an airfield in Erding, Germany.

Reassigned to Seymour Johnson Field, North Carolina, the group reassembled in late August. For the next two months, the men trickled away as the American military machine was disassembled. On 5 October, the 410th moved to Myrtle Beach Army Airfield, South Carolina. With its job done, the 410th was deactivated on 7 November.

On 1 February 1963, with headquarters at K. I. Sawyer AFB, Michigan, the 410th was reborn the 410th Bombardment Wing (Heavy). Assigned to the Strategic Air Command (SAC), the 410th exchanged the A-20 aircraft for the B-52H Stratofortress bomber and the KC-135A Stratotanker.

HISTORY OF



K.I. SAWYER AFB

K. I. Sawyer Air Force Base, located 23 miles southeast of Marquette, Michigan, was named after Kenneth I. Sawyer, a former Marquette County Road Commissioner. A hill of sand was the prominent feature of the present base area when, in 1941, Sawyer first presented his plan for an airport to the Marquette County Board. As Superintendent of the Marquette County Road Commission, airports were not his direct responsibility; however, Sawyer realized the value of air service to Marquette County and through his efforts an airport was built at the site of the present base. It was suggested during World War II that an Air Force base be built on the site, but the proposal was not acted upon. The airport was named for Sawyer after his death in 1944.

Negotiations between the county and the U. S. Government for the lease of the airport as a military installation began in 1954. On January 24, 1955 an agreement was signed and K. I. Sawyer County Airport became an air base.

The base was activated by military personnel on 8 April 1956, but the runway was not officially opened until late October 1959, when an F-101B "Voodoo" touched down at the field. The host unit at that time was the 56th Fighter Wing which comprised two major tenant units. They were the Sault Ste. Marie Air Defense Sector, a Semi-Automatic Ground Environment (SAGE) operation, and the 4042nd Strategic Wing, a Strategic Air Command Unit. Both tenants moved to the base in 1958.

In February 1963, the 4042nd Strategic Wing was redesignated the 410th Bombardment Wing (Heavy). The sector headquarters functioned until the end of September 1963, when it was phased out. The 56th Fighter Wing deactivated in late 1963, and on January 1, 1964 control of the base passed to the 410th.

The F-101B Voodoo-equipped 62nd Fighter Interceptor Squadron, originally assigned to the 56th, remained at Sawyer as a tenant unit until April 30, 1971 when it was deactivated. The 87th Fighter Interceptor Squadron and its F-106 Delta Darts were transferred to Sawyer from Duluth Municipal Airport, Minnesota, in May 1971. The 87th Fighter Interceptor Squadron remained as a tenant unit until 1 October 1985 when it was deactivated.

The base is now the home of the 410th Bombardment Wing, the 410th Combat Support Group, the 410th Strategic Hospital, the 2001st Communications Squadron, and an Operating Location for the 71st Flying Training Wing.

Sawyer is controlled in ascending order of command by the Eighth Air Force, headquartered at Barksdale AFB, Louisiana and the Strategic Air Command, headquartered at Offutt AFB, Nebraska.

WING AWARDS



National Level

National Safety Council Award of Honor for 1988.
National Defense Transportation Association Award for 1987.
National Safety Council Ground Safety Award for 1984.
Presidential Distinguished Unit Citation - Dec 1944

Air Force and Command Level

410th Bombardment Wing (BMW)

Outstanding Unit Award: Feb-Mar 1963, Jul 1975-Jun 1976,
Jul 1980-Jun 1981
MacKay Trophy - Awarded for the most significant flying achievement (an
around the world B-52H flight), 1981
Flying and Missile Safety Awards, 1981
Alfred F. Kalberer Award for outstanding airmanship, 1981
Explosive Safety and Nuclear Surety Plaques, 1986
Omaha Trophy - Awarded to the most outstanding wing in Strategic Air
Command (SAC), 1980 and 1986
Walter C. Sweeney, Jr. Award - For outstanding operational capabilities
and performance, Jan-Jun 1970, Jan-Jun 1971
Bruce K. Holloway Trophy - For exemplary public service, 1980 and 1981

46th Air Refueling Squadron (ARS)

Outstanding Unit Award: Jul 1984 - Jun 1986
Albert L. Evans Trophy - Awarded to the best Air Refueling Squadron in
SAC, 1981

410th Avionics Maintenance Squadron (AMS)

Outstanding Unit Award: Feb-Mar 1963, Jul 1975-Jun 1976, Jul
1978-Jun 1979
Best AMS in SAC, 1980

410th Field Maintenance Squadron (FMS)

Outstanding Unit Award: Feb-Mar 1963, Jul 1975-Jun 1976, Jul 1976-Jun
1977, Jul 1980-Jun 1981, Jul 1983-Jun 1985

410th Munitions Maintenance Squadron (MMS)

Outstanding Unit Award: Jul 1975-Jun 1976, Jul 1980-Jun 1981, Jul 1982 -
Jun 1984, Jul 1987-Jun 1988
Best MMS in the Air Force, 1985
SAC Maintenance Effectiveness Award, Munitions Category, FY85

410th Organizational Maintenance Squadron (OMS)

Outstanding Unit Award: Feb-Mar 1963, Jul 1975-Jun 1976, Jun 1980-Jul
1981

410th Supply Squadron (SUPS)

Outstanding Unit Award: Jul 1975-Jun 1976, Jul 1980-Jun 1981, Jul
1987-Jun 1988.

410th Transportation Squadron (TRNSS)

Outstanding Unit Award: Jul 1975-Jun 1976, Jul 1980-Jun 1981

410th Comptroller Squadron (CPTS)

Best Comptroller Organization in the Air Force and SAC, 1986

Best Accounting and Finance Organization in the Air Force and SAC, 1986

Accounting and Finance Achievement Award for 1987.

410th Security Police Squadron (SPS)

Outstanding Unit Award: Feb-Mar 1963, Jul 1975-Jun 1976, Jul 1980-Jun 1981

410th Civil Engineering Squadron (CES)

Outstanding Unit Award: Jul 1975-Jun 1976, Jul 1980-Jun 1981, Jul 1982-Jun 1984

Best CES in SAC, 1981

410th Services Squadron (SVS)

Outstanding Unit Award: Jul 1980-Jun 1981, Jul 1982-Jun 1984

Best SVS in SAC, 1981 and 1986

410th Strategic Hospital (HOSP)

Outstanding Unit Award: Jul 1975-Jun 1976, Jul 1978-Jun 1979, Jul 1979-Jun 1980, Jul 1980-Jun 1981

Combat Competition Trophies

Saunders Trophy - Awarded to the SAC tanker unit with the best overall combat capability record, 1962 and 1963.

Navigation Trophy - Now known as the Holloway Trophy, this was awarded to the bomber unit with the best navigation scores during Bombing Competition, 1966.

Blue Steel Trophy - Awarded to the crew with the best combined bombing and navigation scores during the British RAF Giant Strike Competition (the British equivalent of our Bombing Competition), 1971.

James F. Bartsch Trophy - Awarded for the best electronic counter-measures performance during Bombing Competition, 1983.

Giant Sword Trophy - Awarded to the team with the best combined loads during the annual Weapons Loading Competition, 1983 and 1984.

Best SRAM Load - presented to the team with the best Short Range Attack Missile (SRAM) load during the weapons loading competition, 1982, 1983, 1984.

Best Munitions Maintenance Loads - Awarded to the munitions maintenance squadron with the best overall weapons loading during the annual competition, 1982.

The Spirit Bell - Awarded to the team that displays the most pride, spirit, and determination during the weapons loading competition. The winners are selected by votes from the other participants, 1984.

Numbered Air Force and Air Division Level

410th Bombardment Wing

Richard M. Hoban Trophy - Awarded annually to the most outstanding unit in the Eighth Air Force, 1986.

William B. Martensen Award - Presented to the best maintenance complex in Eighth Air Force, 1970, 1979, 1982, 1986.

John Wynne Trophy - Best Bomb Wing in Second Air Force, Jan-Jul 1967 and Jul-Dec 1968.

Weapons Safety Award of Excellence, 1986.

Occupational Safety and Health Award, 1986.

Commander's Trophy awarded by 40th Air Division, 1980, 1983, 1986.

Best Tactical Wing in 40th Air Division, Oct-Dec 1963.

46th Air Refueling Squadron

Golden Tanker Award - Awarded to the best Tanker Unit in Second Air Force, 1971 and the best Tanker Unit in Eighth Air Force, 1983.

Outstanding Tactical Unit Award, 1987.

644th Bombardment Squadron

Golden Bomber Trophy - Awarded to the best Bomber unit in Second Air Force, 1971 and selected as the best Bomb Squadron in Eighth Air Force, 1980.

410th Field Maintenance Squadron

Best FMS performance in 40th Air Division, Oct-Dec 1961, Jan-Mar 1962, Jul-Sep 1962, Jan-Mar 1963, 1979, 1980.

410th Munitions Maintenance Squadron

Best MMS performance in 40th Air Division, 1978.

Outstanding Munitions Maintenance Squadron, 1987.

410th Transportation Squadron

Best Transportation Squadron in 40th Air Division, 1981.

410th Supply Squadron

Best Supply Squadron in 40th Air Division and 8th Air Force, 1987.



ECONOMIC IMPACT REGION

The economic impact region (EIR) is defined as a 50-mile radius from the base. The EIR encompasses the major portion of local economic activity.

MICHIGAN

SCALE IN MILES
SCALE IN KILOMETERS

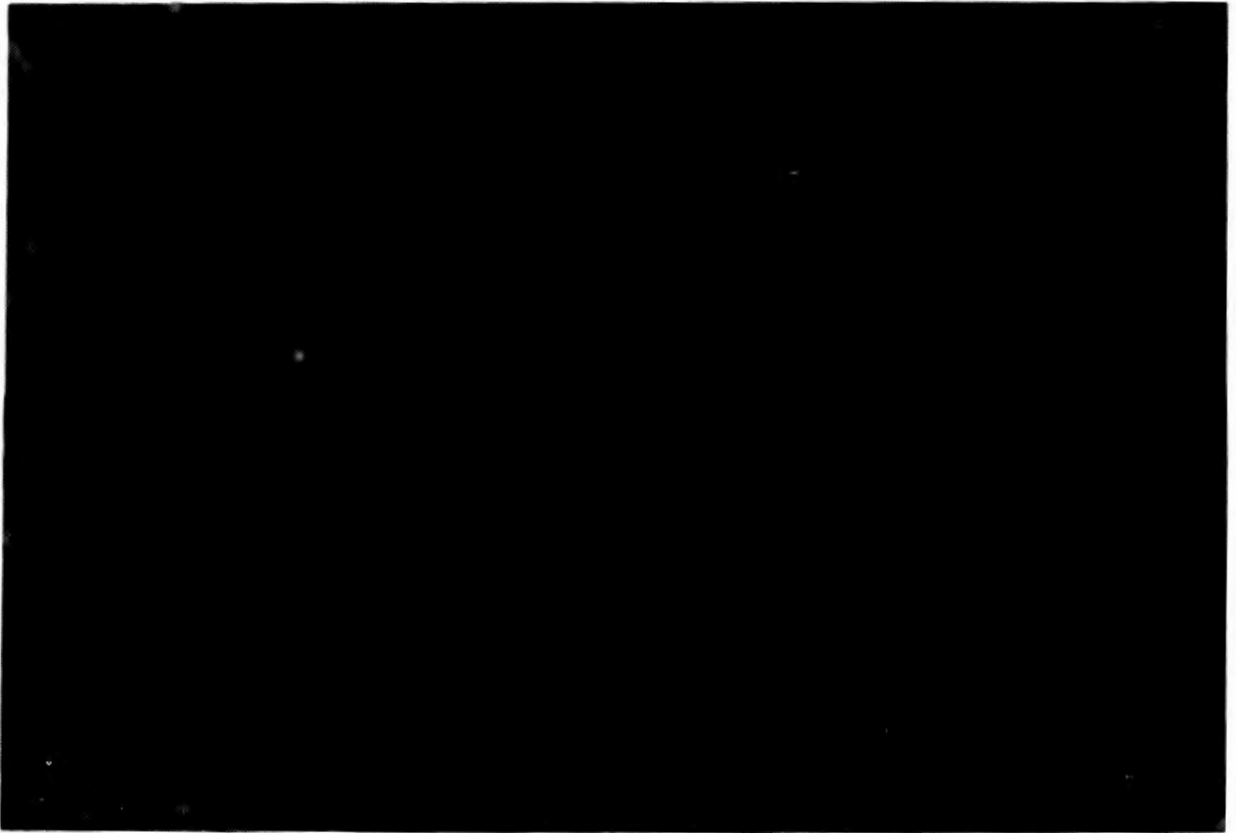
ORGANIZATIONS

HOST UNITS

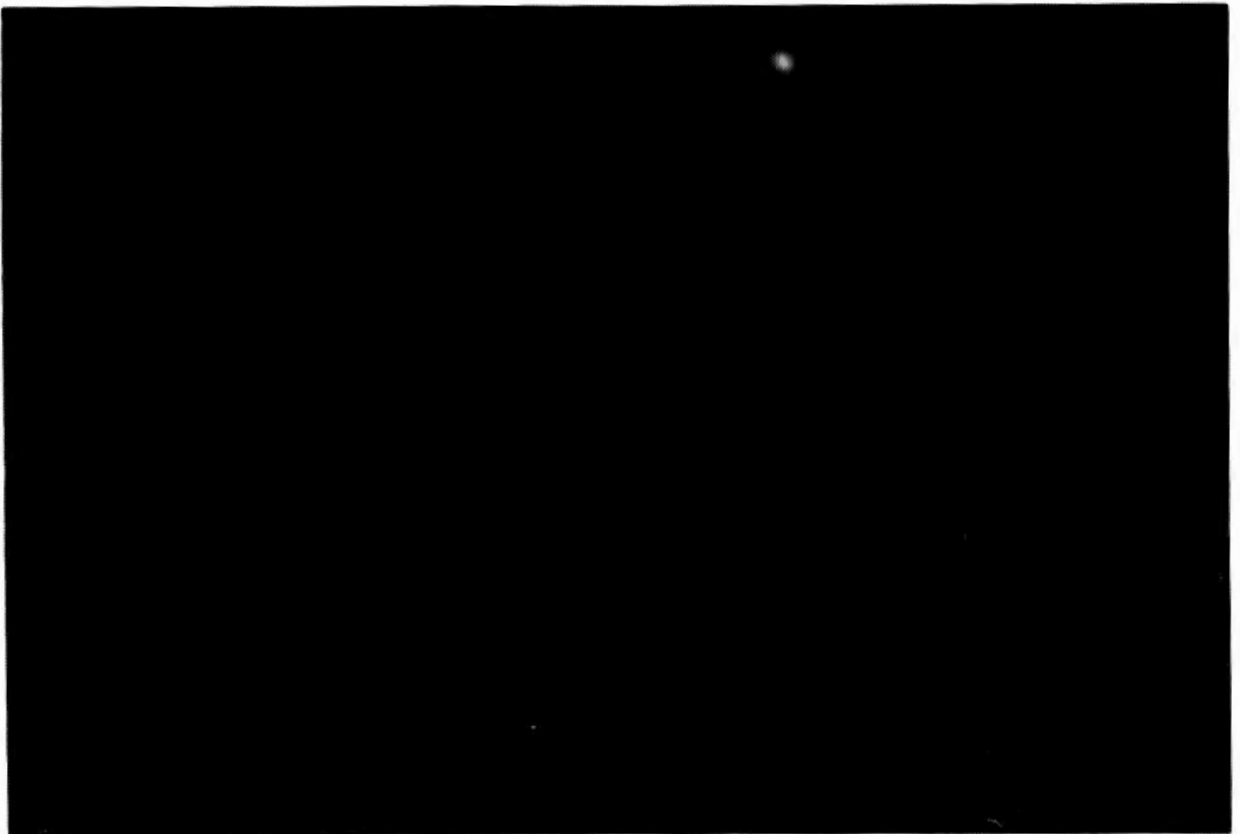
410th Bombardment Wing	410th Combat Support Group
644th Bombardment Squadron	Civil Engineering Squadron
46th Air Refueling Squadron	Security Police Squadron
307th Air Refueling Squadron	Services Squadron
Comptroller Squadron	
Supply Squadron	
Transportation Squadron	410th Strategic Hospital
Avionics Maintenance Squadron	
Field Maintenance Squadron	
Munitions Maintenance Squadron	
Organizational Maintenance Squadron	

TENANT UNITS

2001st Communications Squadron (AFCC)
Detachment 20, 3904 Management Engineering Squadron (SAC)
Extremely Low Frequency (ELF) Transmitter Facility (Navy)
Detachment 512, AF Office of Special Investigations (AFOSI)
U.S. Army Corps of Engineers (Army)
Air Force Audit Agency (AFAA)
Operating Location-A 71st Flying Training Squadron (ATC)
Detachment 24, 26th Weather Squadron (MAC)
Detachment 510, Air Force Commissary Service (AFCOMS)
Defense Reutilization and Marketing Office (DOD)
Area Defense Counsel (AFLSC)
Army and Air Force Exchange Service (AAFES)
Detachment 225, 3753 Field Training Squadron (ATC)
Detachment 2, Aerospace Systems Division (AFSC)
Operating Location-AM 6510 Maintenance Supply Group (AFSC)
31st Test Evaluation Squadron (SAC)



FORCE STRUCTURE

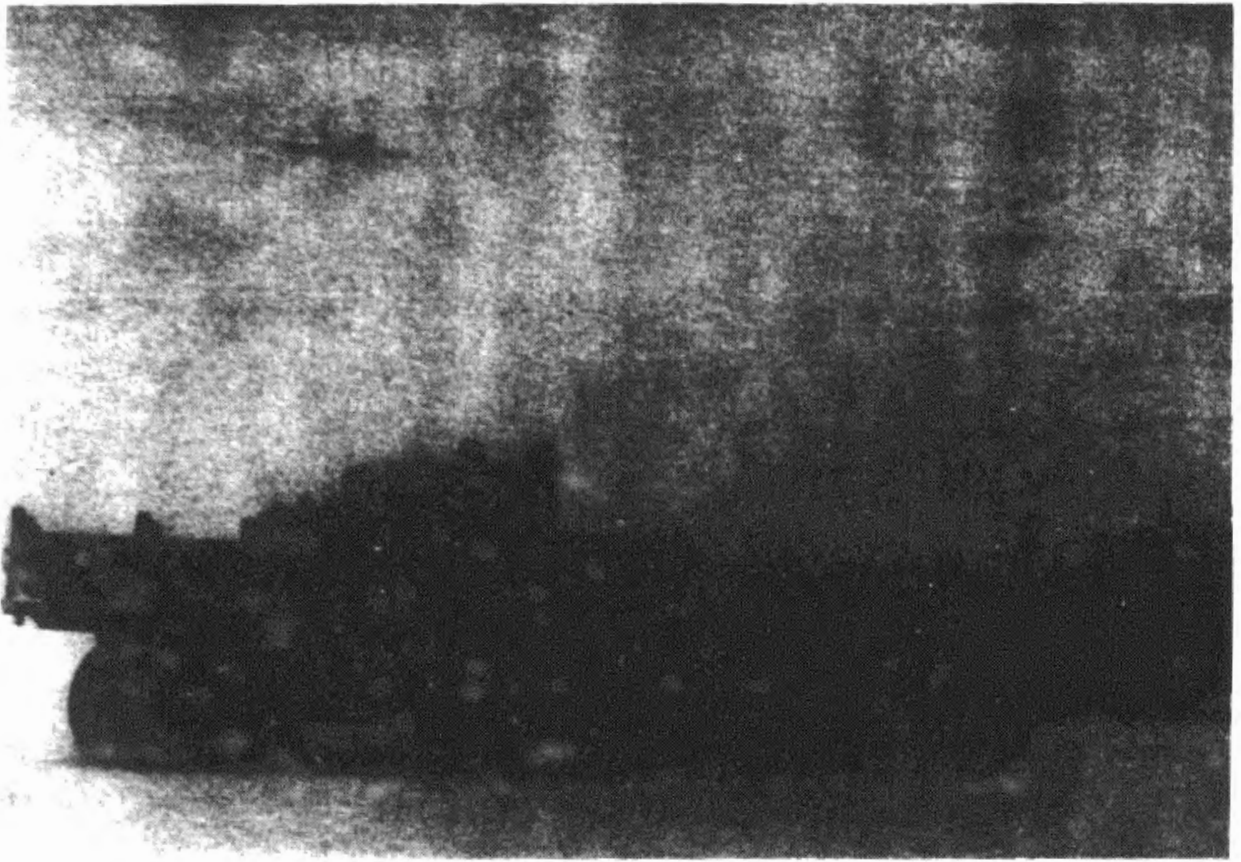


AIRCRAFT	ASSIGNED	FLYING HOURS	SORTIES	ENGINE CHANGES
410th Bombardment Wing/SAC				
B-52H	20	7,000	1,300	30
KC-135A	20	5,000	1,700	80
71st Flying Training Wing/ATC				
T-37	5	2,500	1,800	10
Total	45	16,300	5,000	105

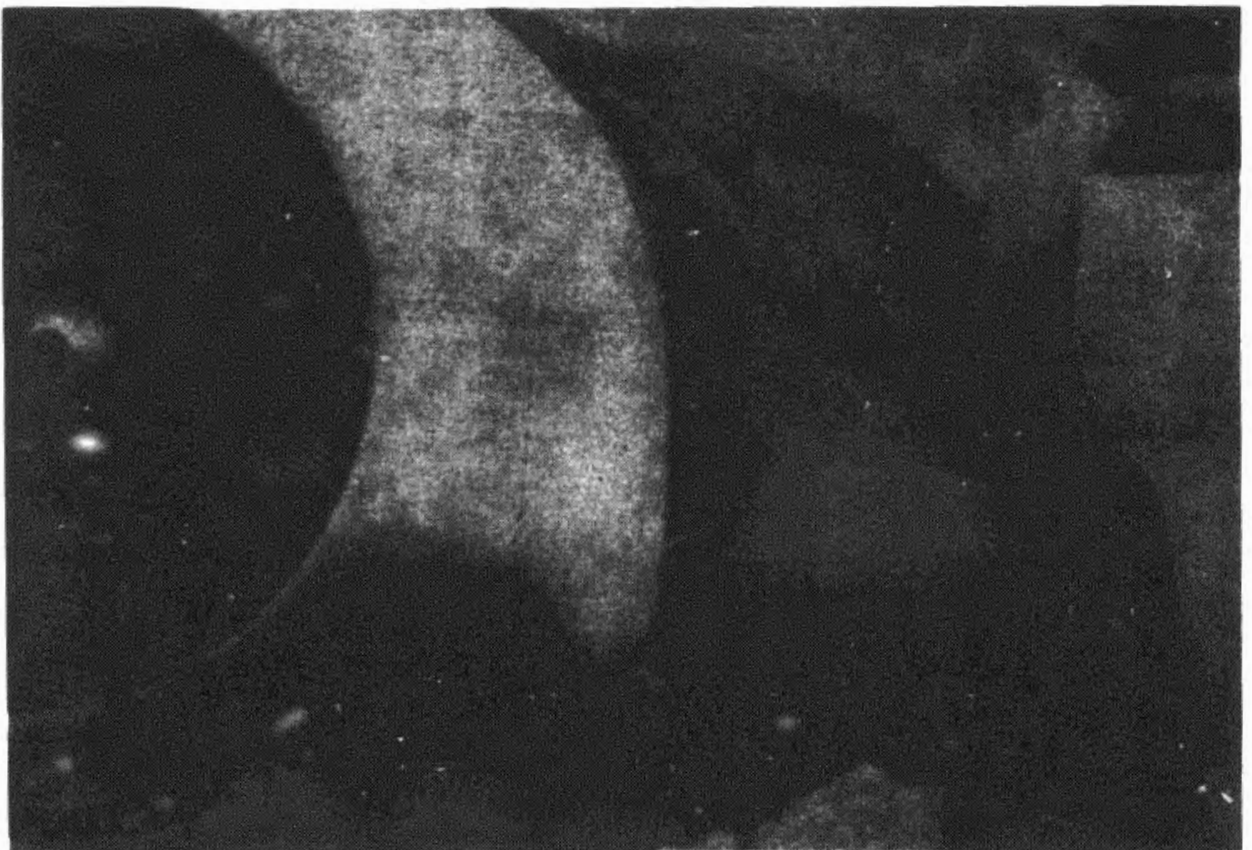
* Force Structure data is estimated.

The B-52 Stratofortress is a heavyweight among Strategic Air Command's bomber force. This aircraft is capable of high subsonic speeds and can fly at altitudes up to 50,000 feet. K. I. Sawyer's bomber fleet consist of the B-52H model series. This model is 159 ft long and 40 ft high and has a wing span of 185 ft. Its eight turbofan engines produce some 136,000 pounds of thrust.

The KC-135 Stratotanker is the primary aircraft used for high speed aerial refueling to provide U.S. Air Force aircraft with extended range and mobility. The KC-135 can fly at near sonic speed and at altitudes up to 50,000 feet. These characteristics allow aircraft to be refueled without slowing down or descending to where jet engines burn fuel more rapidly.



PROGRAM DATA



ENERGY

TYPE	QUANTITY	TOTAL COST
Electricity (KWH)	55,146,912	\$ 2,863,922
Coal (Tons)	5,949	346,529
Heating Oil/Propane (Gallons)		
FS-1	29,794	19,366
FS-2	2,316,038	1,899,213
Propane	45,723	39,744
Total Oil/Propane	2,391,555	\$ 1,958,323
Natural Gas (CCF)	3,241,740	1,214,194
Water (Gallons)	495,761,000	355,731
Grand Total		\$ 6,738,699

** There were a total of 30 energy related civil engineering work orders in FY88.

FUELS

TYPE OF FUEL	UNIT PRICE	ISSUES		RECEIPTS	
		GALLONS	DOLLARS	GALLONS	DOLLARS
Aviation Fuel	.61	34,674,603	\$21,151,508	35,128,746	\$21,428,535
Regular Gas	.73	54,680	39,916	43,389	31,674
Unleaded Gas	.73	210,111	153,381	217,769	159,971
Diesel Fuel #1	.65	389,679	253,291	389,918	253,447
Fuel Oil #1	.65	23,331	15,165	23,331	15,165
Fuel Oil #2	.65	2,453,846	1,595,000	2,453,846	1,595,000
Total		37,806,250	\$23,208,261	38,256,999	\$23,482,792

SUPPLY

Sperry 1100/60 Computer Transactions	95,747
Number of Item Records Loaded in the Computer	60,967
Requisitions	4,836
Receipts	4,334
Local Purchase Receipts	657
Issues	11,062
Bench Stock Issues	2,994
Stock Effectiveness	89%
Issue Effectiveness	76%
Total Dollar Value of Supplies on Hand	\$ 52,746,591
Total Dollar Value of Equipment on Hand	\$ 1,461,963
Total Dollar Value In-Use Equipment (as of Jul 88)	\$ 92,573,218
General Support Division Stock Fund	\$ 3,964,535

* Supply data shown is a monthly average

TRANSPORTATION

Personal Property Shipments

Received	1,633
Shipped	1,757
Nontemporary Storage	200

Passenger Travel

Total Passengers Moved	1,308
------------------------	-------

Vehicles Assigned

General Purpose	321
Special Purpose	110
Base Maintenance	82
Material Handling	33

Total Vehicles	546
----------------	-----

GWINN SCHOOLS

(87-88 SCHOOL YEAR)

	Students	Revenue
Dependents Residing On Base		
Regular	1,205	\$ 2,412,192
Special Education	56	168,153
Total	1,261	<u>\$ 2,580,345</u>
Dependents Residing Off Base		
Uniformed	258	\$ 96,506
Civilian	211	71,018
Special Education	25	\$ 12,005
Total	494	<u>\$ 179,529</u>
Grand Total	1,755	<u>\$ 2,759,874</u>

NORTHERN MICHIGAN UNIVERSITY

FISCAL YEAR 1988	FALL	WINTER	SPRING	SUMMER
Number of Courses Offered	35	35	14	6
Undergraduate Students				
Military	247	261	79	28
Military Family Member	58	64	23	16
Civilian	53	57	65	23
Total	358	382	167	67
Graduate Students				
Military	45	48	22	13
Military Family Member	1	3	3	1
Civilian	29	34	20	9
Total	75	85	45	23
Total Number of Students	433	467	212	90
Number of Enrollments				
Undergraduate	529	572	174	67
Graduate	85	100	45	23
Total	614	672	219	90
Credit Hour Production				
Undergraduate	2,073	2,231	656	268
Graduate	340	400	180	92
Total	2,413	2,631	836	360
Tuition Revenue				
Undergraduate	\$ 116,606	\$ 125,494	\$ 36,900	\$ 15,075
Graduate	24,310	28,600	12,870	6,578
Total	\$ 140,916	\$ 154,094	\$ 49,770	\$ 21,653

Total amount of tuition assistance provided to active duty Air Force members for FY88 was \$177,745.

OFFICER - EDUCATION

	Colonel	Lieutenant Colonel	Major	Captain	First Lieutenant	Second Lieutenant
Age						
21-25	0	0	0	42	92	29
26-30	0	0	1	129	43	9
31-35	0	0	22	40	6	3
36-40	0	22	33	15	0	0
41-45	7	11	3	3	0	0
46-60	2	1	2	0	0	0
Years of Service						
0-5	0	0	4	100	128	36
6-10	0	0	3	96	6	5
11-15	0	1	27	16	7	0
16-20	1	29	25	11	0	0
21-25	8	4	2	6	0	0
26-40	0	0	0	0	0	0
Degree Held						
Bachelors	0	4	12	170	132	38
Bachelors+	0	0	5	13	2	0
Masters	8	27	33	21	6	1
Masters+	0	0	0	0	0	0
Doctorate	0	0	0	1	0	0
Other	1	3	11	24	1	2

ENLISTED - EDUCATION

	Chief Master Sergeant	Senior Master Sergeant	Master Sergeant	Technical Sergeant	Staff Sergeant	Sergeant
Age						
17-20	0	0	0	0	0	0
21-25	0	0	0	0	95	249
26-30	0	0	1	67	417	159
31-35	0	4	50	142	167	14
36-40	2	22	116	114	38	1
41-45	5	11	36	11	3	0
46-60	4	1	5	0	0	0
Years of Service						
0-4	0	0	0	0	13	155
5-10	0	0	1	49	506	267
11-15	0	3	38	165	179	1
16-20	2	18	125	118	22	0
21-25	3	14	41	2	0	0
26-30	6	3	3	0	0	0
31-50	0	0	0	0	0	0
Degree Held						
Some HS	0	0	0	0	0	0
HS Grad	0	0	24	73	204	114
15-59*	4	10	91	168	417	266
60-89*	2	7	48	51	47	30
90+*	4	18	36	30	22	6
Bachelors	1	3	8	10	10	3
Masters	0	0	1	0	0	0
Other	0	0	0	2	20	4

* Number of semester hours toward a degree.

Other = GED, GED equivalent or Masters+

HS = High school

ENLISTED (cont'd)

	Senior Airman	Airman First Class	Airman	Airman Basic
Age				
17-20	0	191	148	19
21-25	316	457	60	2
26-30	45	43	3	0
31-35	1	1	0	0
36-40	0	0	0	0
Years of Service				
0-4	354	691	211	21
5-10	7	1	0	0
11-15	1	0	0	0
16-20	0	0	0	0
Degree Held				
Some HS	0	1	1	0
HS Grad	199	283	134	18
15-59*	208	363	75	3
60-89*	14	18	0	0
90+*	13	6	0	0
Bachelors	8	17	0	0
Masters	0	0	0	0
Other	0	4	1	0

* Number of semester hours toward a degree.
 Other = GED, GED equivalent or Masters+
 HS = High School

HOSPITAL

Operating Expenses	FY87	FY88
Civilian Pay	\$ 667,400	\$ 695,200
Military Pay	7,150,200	7,087,700
Supplies	1,006,600	1,172,400
Equipment	83,600	103,800
Contract Services	199,600	207,600
Civil Engineering Cost, Utilities	536,600	456,400
Investment Equipment	80,500	71,200
Other Costs	657,800	661,700
Subsistance	2,000	1,300
Total	\$10,384,300	\$10,457,300

Usage:

Population Served	17,000	16,600
Number of Outpatient Visits	86,900	96,600
Number of Prescriptions Filled	128,300	167,000
Admissions	1,500	1,200
Medical Air Evacuations	500	600
Number of Immunizations	25,300	21,100
Number of X-Rays	15,800	20,500
Bed Authorizations	15	15
Births	371	322
Operations Performed	759	675
Physical Therapy Treatments	5,851	9,676
Lab Procedures	183,590	214,005

COMMUNITY PROJECTS

Combined Federal Campaign

The CFC drive which ended 31 October 1987 raised \$102,975, or 115% of the base goal.

Base Tours/Community Events

The annual Open House and Air Show held in August 1988 drew a crowd of 40,000 people.

Base units hosted 18 squadron open houses.

During FY88 3,626 people participated in 267 base tours.

The annual Chamber of Commerce Chicken BBQ was held in August.

The base hosted approximately 600 people participating in the Upper Peninsula Class E Women's Softball Tournament in August.

The Base hosted approximately 200 people participating in the regional youth karate tournament in June.

Approximately 60 aircraft and 200 people participated in the annual civilian (aircraft) fly-in in June.

VFW units from Negaunee and Marquette joined the base in its annual Armed Forces Day observance in May.

Community leaders, including many representatives of the Air Force Association local chapter, participated in the dedication of the F-101B Voodoo static display in November.

Other

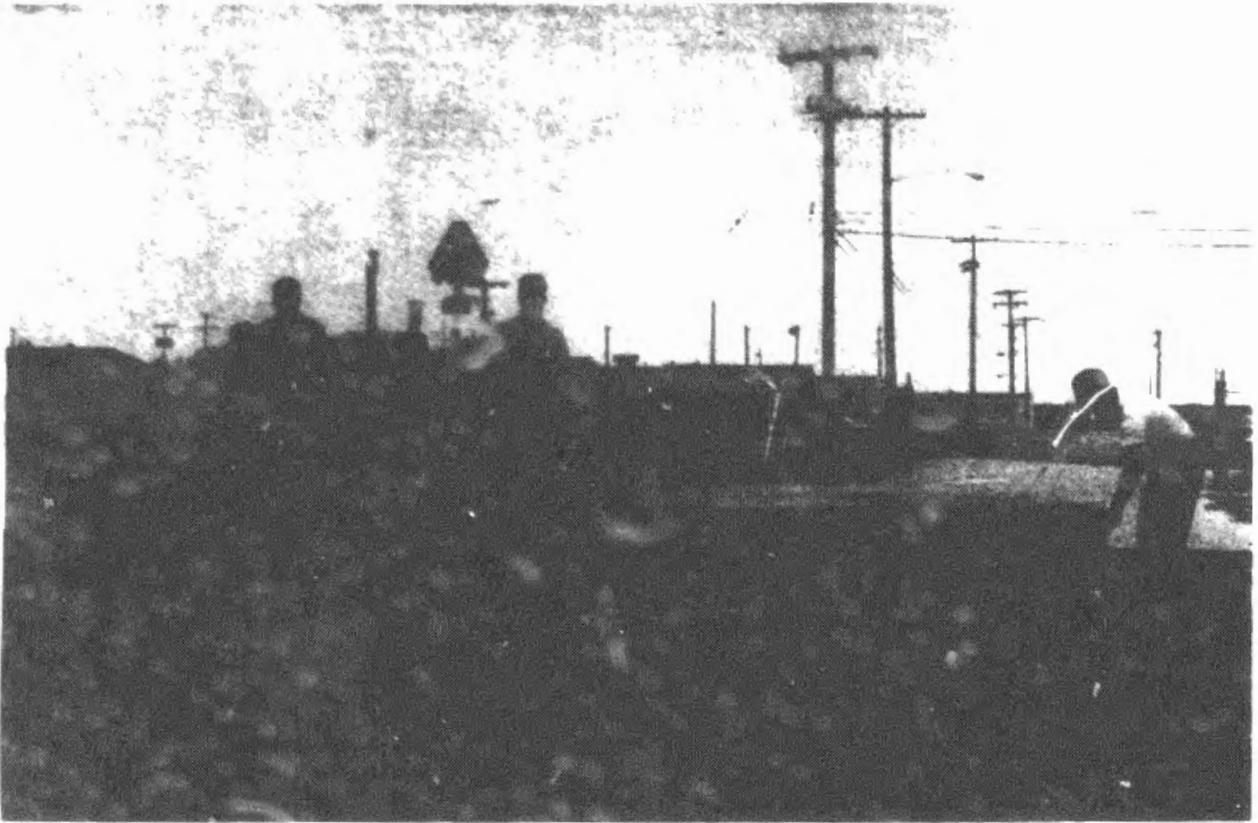
The Air Force Assistance Fund raised \$33,000, or 141% of the base goal.

Operation Warmheart donations included \$7,845 in cash, 400 pounds of clothes, 200 pounds of toys, and 77 bags of groceries.

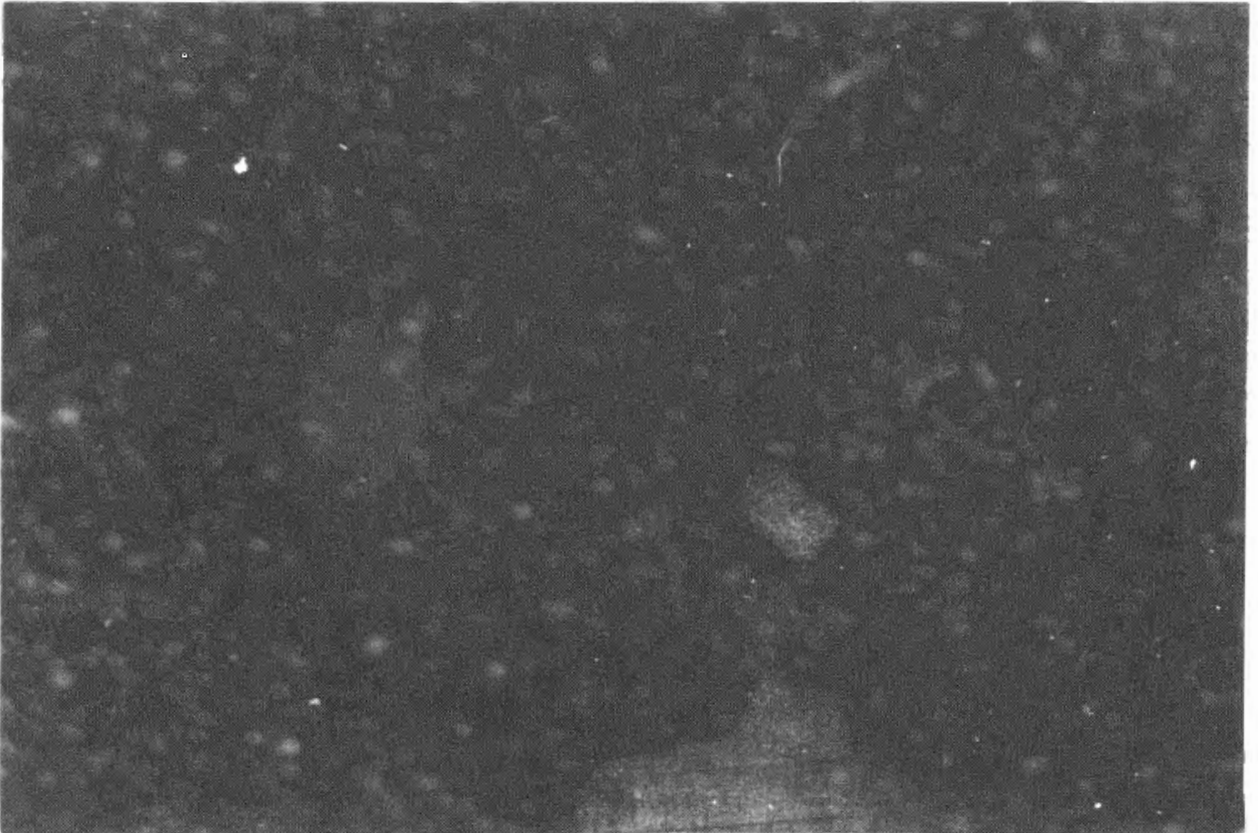
The Base Chapel provided grants and food baskets totalling \$7,652 to needy families.

National-level organizations involving base personnel:

Kiwanis	Air Force Association
Lions Club	Veterans of Foreign Wars
Masonic Lodge	Association of Old Crows
American Legion	Air Force Sergeants Association
Knights of Columbus	Air Force Navigators Association
Daedalians	Company Grade Officers Committee
Girl Scouts	Noncommissioned Officers Association
Cub/Boy Scouts	Society of Aviation Flight Enthusiasts
Explorer Scouts	American Society of Military Comptrollers
Young Astronauts	American Red Cross



CAPITAL ASSETS



BUILDINGS LAND

Type of Building						Number of buildings
Industrial						
Aircraft Maintenance						15
Civil Engineering						18
Bas Supply Warehouses						17
Total Industrial						50
Administration						20
Quarters			Units/Bldg		Bed Spaces	
Distinguished Visitors			3/2		16	
Bachelor Officer Quarters			22/2		22	
Airmen/NCO			1,320/9		1,320	
Visiting Airmen's Quarters			40/1		40	
Visiting Officer Quarters			14/2		28	
Temporary Lodging Facility			36/6		36	
Total					1,452	22
Housing	2-br	3-br	4-br	Total Units		
Officers	0	184	95	279		
Enlisted	146	1,026	210	1,382		
Trailer Pads	0	0	0	199		
Housing Buildings						658
Commissary						1
Base Exchange						1
Recreation						
Outdoors						28
Indoors						9
Total						37
Hospital						1
Total Buildings						790
Land						Acres
Public Domain						160
Fee Owned						2751
Easements, Rights of Way						290
Leases						2001
Total Acreage						5,202
Runway Length						12,300 ft

AUTOMATED DATA PROCESSING

Type of Equipment	# Units	Individual Cost
Owned		
Data Point (Hospital)	1	\$ 109,433
Wang (Civil Engineers-WIMS)	1	687,724
Wang (Services-SIMS)	1	423,075
UNISYS (COOF)	1	346,792
UNISYS (1100/60, 74 Terminals)	1	1,544,816
Leased/Owned		
IBM/UNI (Keypunches)	11	\$ 8,389
TOTAL	16	\$3,120,229

NAVIGATION

Area Surveillance Radar (GPN 12-ASR): Used for radar detection on aircraft for local traffic control.

BRITE II (GPA 133): Used for control of air traffic by the tower. Information for display comes from GPN 12.

Precision Approach Radar (FPN 62-PAR): Used for low approaches and landings. This model is rotatable and can be used for approaches from either the north or the south. PAR gives Approach Control a visual indication of the glide angle and azimuth of the landing craft which is then given guidance by voice.

Tactical Air Navigation (FRN 43 VORTAC): Ground station gives bearing and distance measuring equipment information to aircraft having VORTAC/TACAN receiver. Ground station gives bearing indication to the plane's equipment with VOR receiver.

Instrument Landing System (GRN 27 ILS): Used to give aircraft with ILS receiver vertical and horizontal guidance for low approach landings.

COMMUNICATIONS

COMMUNICATIONS CENTER

Standard Remote Terminal	1
Medium Speed Printers	2
Card Punch	1
Card Reader	1
Paper Tape Reader	1
Sperry/UNIVAC Keypunch Units	1
Magnetic Tape Units	3
Optical Scan Unit	1
Line Control Unit	1
Storage Module Disk Drive	1

LAND MOBILE RADIOS

FM Radio Systems (command/control and non-tactical communications using 23 RF frequencies)	21
Base Stations	26
Remote Controls	39
Mobile Radios	219
Portable Radios	396
Pagers	214
Alert Receivers	77
Universal Number Interchange (number assignments and changes for pagers)	1

TELEPHONE SYSTEMS

- 1 - Customer Administration Panel (translation changes and modifications in the Private Branch Exchange (PBX) system)
- 2 - Dimension 2000 Attendant Consoles (computerized, push-button switchboard operations)
- 1 - Dimension 600 (SAC Operational Conferencing System)
- 1 - Dimension 400 (Hospital PBX)
- 2 - Interfaces connected to 608D switchboard (Commander's radio net pager system)
- 1 - AUTOSEVOCOM line (secure voice communications between bases)
- 1 - Primary Alerting System (voice network which provides a fast and reliable means to alert subordinate units through a broadcasting system)
- 1,600 - Telephone Lines
- 2,867 - Telephone Instruments

VALUE OF RESOURCES

AIRCRAFT

B-52	\$ 1,082,000,000
KC-135	402,000,000
T-37	3,000,000
Total Value	\$ 1,487,000,000

EQUIPMENT

Appropriated	\$ 99,179,029
Nonappropriated	210,126
Base Exchange	3,928,500
Total Equipment	\$103,317,655

CAPITAL ASSETS

Bldg, Real Property	\$136,340,000
Land	36,000
Other	60,988,000
Total Capital Assets	\$197,364,000

INVENTORIES

Stock Fund	
General Support	\$ 3,748,494
Systems Support	2,977,876
Aviation Fuels	2,206,218
Ground Fuels	18,302
Medical/Dental	213,616
Total	\$ 9,164,506
Non-Stock Fund	\$ 96,625,400
Sales Outlets	
Commissary	\$ 1,036,523
Nonappropriated Fund	135,903
Base Exchange	1,980,000
Total	\$ 3,152,426
Total Inventories	\$108,942,332

SOURCES: AFR 173-13, 410 CPTS, 410 CSG/DE, 2001 CS
410 CSG/SSF, Army Air Force Exchange Service

EXPENDITURES

Operations and Maintenance Expenses (Excluding Civilian Pay) (000)	HOST	TENANT	GSUs*	TOTAL
Communications	\$ 609.5	\$ 0	\$ 1.9	\$ 611.4
Contract Services	3,027.1	364.8	66.9	3,458.8
Equipment	1,278.1	0	0	1,278.1
Equipment Rentals	41.8	0	6.9	48.7
Facility Projects	1,070.6	0	0	1,070.6
Ground Fuels	397.4	0	2.1	399.5
Heating Fuels	1,747.8	0	66.5	1,814.3
Purchased Equipment Maint.	288.2	0	8.1	296.3
Supplies	11,609.3	0	79.1	11,688.4
Travel	1,234.9	44.1	39.5	1,318.5
Transportation of Property	151.3	0	37.7	189.0
Utilities	2,297.4	0	86.3	2,383.7
Total O&M Expenses	\$ 23,753.4	\$ 408.9	\$ 395.0	\$ 24,557.3
Other Funded Programs				
Military Family Housing	\$ 3,040.8	\$ 0	\$ 87.8	\$ 3,128.6
Investment Equipment	11.6	0	0	111.6
Claims	88.2	0	0	80.2
Total Other Programs	\$ 3,232.6	\$ 0	\$ 87.8	\$ 3,320.4
TOTAL ANNUAL EXPENSES	\$ 26,986.0	\$ 408.9	\$ 482.8	\$ 27,877.7
Retail Sales				
Commissary	\$ 9,693.9	\$ 0	\$ 0	\$ 9,693.9
Base Exchange	9,025.0	0	0	9,025.0
Nonappropriated Fund	2,072.4	0	0	2,072.4
Total	\$ 20,791.3	\$ 0	\$ 0	\$ 20,791.3

* GSUs = Geographically Separated Units (Mainly Calumet Air Force Station. In FY89 and beyond this figure will be negligible.)

SOURCES: 410 CPTS/ACB, Air Force Commissary, Army Air Force Exchange Service,
410 CSG/SSF

PERSONNEL

	Living On Base	Living Off Base	Total
Appropriated Fund Military			
Permanent Party			
Officer	371	150	521
Enlisted	2470	566	3036
Total Military	2841	716	3557
Military Dependents	4029	880	4909
Appropriated Fund Civilian			
General Schedule			253
Federal Wage System			282
Other			1
Total Civilians			536
Nonappropriated Funds, Contract Civilian, and Private Business			
Civilian NAF/BX			371
Contract Civilians			460
Private Business on-base by type			
Branch Banks			9
Credit Union			12
Total NAF, Contract Civilian, and Private Business			852

***** RETIRED PERSONNEL LIVING WITHIN 498XX ZIP CODE *****

Branch of Service	Total
Air Force	586
Army	247
Navy	154
Marine Corps	43
Coast Guard	47
Total	1,077

SOURCES: 410 CSG/DP, 410 CSG/SSF, 1st National Bank of Marquette,
 Army Air Force Exchange Service, 410 BMW/LGC, HQ SAC
 Joint Military Services Credit Union

ORGANIZATIONAL DATA

HOST ORGANIZATIONS	OFFICERS	ENLISTED	TOTAL MILITARY	CIVILIANS	TOTAL
644 BMS	166	33	199	0	199
307 ARS	57	19	76	0	76
46 ARS	57	19	76	0	76
410 AMS	10	185	195	1	196
410 FMS	5	291	296	6	302
410 MMS	8	315	323	0	323
410 OMS	9	472	481	2	483
410 CHS	84	263	347	81	428
410 CES	12	232	244	253	497
410 SPS	7	363	370	0	370
410 SVS	3	55	58	2	60
410 STRAT HOSP	68	135	203	34	237
410 SUPS	5	240	245	29	274
410 TRANS	6	126	132	49	181
410 CPTS	4	45	49	12	61
TOTAL	501	2793	3294	469	3763

TENANT UNITS

DET 512 AFOSI	4	0	4	1	5
COMMISSARY	0	5	5	53	58
26 WEATHER	3	18	21	0	21
2001 COMM	6	170	176	5	181
SRAM MAINT	0	1	1	1	2
AERO SYST	1	0	1	1	2
3904 MET	0	4	4	3	7
71 FTW	3	0	3	3	6
ARMY	1	1	2	0	2
NAVY	2	25	27	0	27
FTD	0	19	19	0	19
TOTAL	20	243	263	67	330

GRAND TOTAL	521	3036	3557	536	4093
--------------------	------------	-------------	-------------	------------	-------------

OTHER ACTIVITIES

NAF EMPLOYEES	226
BASE EXCHANGE	145
CREDIT UNION	9
BASE BANK	12
CONTRACTOR EMPLOYEES (FTE)	<u>460</u>

TOTAL NAF AND CONTRACTOR PERSONNEL	852
---	------------

PAYROLL

Appropriated Fund Military	Total
Military Permanent Party	
Living On Base	\$ 39,638,321
Living Off Base	30,612,036
Total Military	\$ 70,250,357
Appropriated Fund Civilians *	
General Schedule	\$ 5,198,300
Federal Wage System	5,846,400
Other	4,000
Total Civilians	\$ 11,048,700
Nonappropriated Funds and Other Civilians *	
Nonappropriated Fund	\$ 1,556,779
Base Exchange	1,089,342
Private Business on-base by type	
Branch Bank	82,500
Credit Union	125,000
Total NAF and Other Civilians	\$ 2,853,621
Military Retirees **	
Air Force	\$ 6,915,941
Army	1,963,316
Marine Corps	329,330
Navy	1,583,319
Coast Guard	593,153
Total	\$ 11,385,059

* Gross income, doesn't include gov't paid benefits.

** Includes 4.2% benefit increase received in FY88.

SOURCES: 410 BMW/ACFV, 410 CSG/SSF, Army Air Force Exchange Service,
1st National Bank of Marquette, HQ SAC,
Joint Military Services Credit Union

CONTRACTS

	Actual or Annulaized Expenditures
CONSTRUCTION	
Major Construction	
Buildings and Grounds	\$ 352,800
Heat Plant and Utilities	0
Military Family Housing	0
Subtotal Major Construction	\$ 352,800
Minor Construction - O&M	
Buildings and Grounds	\$ 452,900
Military Family Housing	116,300
Heat Plant/Utilities	141,400
Subtotal Minor Construction	\$ 710,600
Total Construction	\$ 1,063,400

CONTRACTS AND PROCUREMENT: SERVICES, MATERIALS, EQUIPMENT

Services Contracts	
Buildings and Grounds	\$ 2,440,350
Telecommunications	59,562
Utilities and Energy	5,985,783
Other Services, n.e.i.*	1,333,563
Total Services	\$ 9,819,258
Commissary, Base Exchange, Health, Education and TDY Exp.	
Commissary/Base Exchange **	\$ 3,647,900
Education	2,759,874
Health (Gov Cost - Champus, etc.)	734,956
TDY and TLA	88,906
Other Materials, Equipment, and Supplies Procurement, n.e.i.*	\$ 6,957,479

* Not elsewhere included

** Base unique factors - Commissary 13.95%; BX 26%.

SOURCES: 410 CSG/DE, 410 BMW/LGC, 410 CSG/SSF
410 CSG/SVH, HQ SAC

MORALE, WELLNESS, AND READINESS

CENTRAL BASE FUND	INCOME	EXPENSES	NET INCOME (LOSS)
Administration	\$ 160,023	\$ 84,830	\$ 75,193
Athletic Facilities	14,084	53,055	(38,971)
Arts and Crafts	91,978	112,197	(20,219)
Bowling Center	401,740	321,254	80,486
Child Care Center	257,227	251,260	5,967
Family Services	1,029	6,267	(5,238)
Fitness Center	4,674	10,124	(5,450)
Golf Facilities	155,159	134,013	21,146
Library	9,125	32,021	(22,896)
Outdoor Recreation	69,662	45,148	24,514
Recreation Center	31,509	46,035	(14,526)
Supply Services	27,718	25,192	2,526
Unit Funds	2,184	2,329	(145)
Veterinary Services	29,808	16,108	13,700
Youth Activities	46,659	72,705	(26,046)
Miscellaneous	7,310	36,379	(29,069)
Special	0	3,199	(3,199)
Other	771	771	0
Total	\$ 1,310,660	\$ 1,252,887	\$ 57,773
Officers' Open Mess	\$ 400,169	\$ 398,064	\$ 2,105
NCO Open Mess	972,602	983,919	(11,317)
Billeting	209,074	230,759	(21,685)
Class VI Store	520,438	484,777	35,661
NAFFMB*	138,804	138,804	0
GRAND TOTAL	\$ 3,551,747	\$ 3,489,210	\$ 62,537

* Nonappropriated Fund Financial Management Branch

CONSTRUCTION PROJECTS

MAJOR CONSTRUCTION PROJECTS - OVER \$200,000

	# PROJECTS	AMOUNT
Buildings and Grounds	11	\$ 9,694,900 *
Heating Plant and Utilities	3	24,948,300 *
Family Housing	2	2,641,100 *
Total	16	\$ 37,284,300

MINOR CONSTRUCTION PROJECTS - UNDER \$200,000

	# PROJECTS	AMOUNT
Buildings and Grounds	21	\$ 2,164,100
Heating Plant and Utilities	7	549,400
Family Housing	5	348,600
Nonappropriated Fund	3	349,700
Total	36	\$ 3,411,800
GRAND TOTAL	52	\$ 40,696,100

* Includes amounts spent in FY88 on multi-year contracts

ECONOMIC IMPACT

Military and civilian payrolls originating on an Air Force Base are not consumed entirely within the economic impact region (EIR). Instead, a percentage of payroll is lost to savings, withholdings, and purchases made outside the EIR. Another percentage is spent on the military installation itself. The impact on the local region is considered in the calculations of local purchases of goods and services discussed in the next paragraph. Between 40-65% of the payroll is spent inside the region; therefore, payrolls must be multiplied by this percentage. The proportion of income spent within the EIR is called the average propensity to consume (APC). This figure varies slightly for military and civilians and is lowest for military personnel living on base. Propensity to consume estimates used in the ERIS represent a percentage of the military and civilian payroll spent within the local economy, and are taken from a 1988 survey of Air Force employees.

In addition to salaries, local expenditures for contract services, construction, educational impact aid, health care, and temporary duty expenses are included in the determination of local consumption expenditures. The above mentioned items are then summed to give a total local expenditures amount. But this amount does not reflect the total economic impact because it does not take into consideration the income multiplier effect. This local income multiplier is 2.0049 for the K. I. Sawyer impact area. Therefore, the local expenditure total is multiplied by the local income multiplier to give the total economic impact of the base on the region. The computations of the total economic impact (TEI) of K. I. Sawyer AFB in Fiscal Year 1988, along with secondary jobs created are shown on the following pages:

\$ ECONOMIC IMPACT \$

Variable Name	Annualized Amount(000)	Adjustment Factors	Local Amt (\$000)	ERIS Variable *
Appropriated Fund Payroll				
Military on-base	39,638.3	.42	16,648.1	Ymon
Military off-base	30,612.0	.57	17,418.9	Ymoff
Civilian	11,048.7	.62	6,850.2	Ycs
Subtotal Mil & Civ Payrolls	81,299.0			AFPAY
Nonappropriated Fund (NAF) Payroll				
Civilian NAF/BX	2,646.1	.62	1,640.6	Ycx
Estimated payroll expenditures - offbase in EIR (Ymon + Ymoff + Ycs + Ycx)			42,587.7	RPAY
Construction and Service				
		Labor Share x	APC	
Total Construction	1,063.4	.384	253.2	Ycon
Total Services	9,819.3	.524	3,190.1	Ys
Commissary/Base Exchange	3,647.9	1	3,647.9	C
Education	2,759.9	1	2,759.9	E
Health	735.0	1	735.0	H
TDY and TLA **	88.9	1	88.9	T
Total Constr & Services	18,114.4			AFCONS
Estimated Labor and Svcs in the EIR (Ycon + Ys + C + E + H + T)			10,674.9	RCONS
Materials, Equipment, and Supplies (MES)				
		MES Share		
Total Construction	1,063.4	.0	638.0	Mc
Total Services	9,819.3	.183	1,796.9	Ms
Other Materials, equip and supplies in EIR,nei.	6,957.5	1	6,957.5	AFMAT
Estimated materials and equip expenditures off base in the EIR (Mc + Ms + AFMAT)			93,924.4	RMAT
Total AF Base Expenditures (AFPAY + AFCONS + AFMAT)			106,370.8	AFTOT
Total AF Base Expenditures in the EIR (RPAY + RCONS + RMAT)			62,655.1	RTOT

* A key for the ERIS Variables is provided on page 42.

** Temporary duty and temporary lodging allowance

\$ECONOMIC IMPACT (cont'd)

Total estimated economic impact in the EIR (TEI_{ier})
of K. I. Sawyer's annual operation expenditures

$$\begin{aligned} \text{TEI}_{\text{ier}} &= \text{RTOT} && \times && \text{M}^* \\ \text{TEI}_{\text{ier}} &= 62655078 && \times && 2.0049 \\ \text{TEI}_{\text{ier}} &= \$125,617,167 \end{aligned}$$

Total Estimated economic impact of K. I. Sawyer's
annual operation expenditures nation-wide

$$\begin{aligned} \text{TEI}_{\text{all}} &= \text{AFTOT} && \times && \text{M}_{\text{avg}}^{**} \\ \text{TEI}_{\text{all}} &= 106370830 && \times && 2.8 \\ \text{TEI}_{\text{all}} &= \$297,838,324 \end{aligned}$$

- * Gross Income Multiplier
- ** Estimated Average National Multiplier

SECONDARY JOBS CREATED

Secondary jobs created
off base in the EIR:

SJC	=	$\frac{RPAY \times (M-1)}{Prs^{**}}$	+	$\frac{RCONS \times M}{Prs}$	+	$\frac{RMAT \times M^*}{Pw^{***}}$
SJC	=	$\frac{42587744}{74180}$	+	$\frac{10674891}{74180}$	+	$\frac{9392443}{250107}$
		$\times 1.0049$		$\times 2.0049$		$\times 2.0049$
SJC	=	$\frac{42796424}{74180}$	+	$\frac{21402089}{74180}$	+	$\frac{18830909}{250107}$
SJC	=	577	+	289	+	75
SJC	=	941				

Estimated secondary jobs
(inside and outside the EIR)
created by K. I. Sawyer's operation expenditures:

EJOBS	=	AFTOT	/	Pdod****
EJOBS	=	106370830	/	35570
EJOBS	=	2990		

- * Gross Income Multiplier
- ** Productivity Factors: Retail Trade and Services
- *** Productivity Factors: Wholesale
- **** DoD National Secondary Job Productivity Factor

AFCONS Construction + services + education + health + TDY.

AFMAT Other procurement (materials, equipment, and supplies) expenditures within the EIR.

AFPAY AF installation payroll of all military and civilians except NAF/BX civilian payroll.

AFTOT AF installation total expenditures for EIR contracts, material, equipment, services, construction, and other procurements.

C Commissary procurements in the EIR.

E Education impact fund.

EIR Economic impact region

EJOBS AF installation's secondary job impact (inside and outside the EIR) based on a DoD national job factor applied to EIR expenditures.

H Local health expenditures (Champus funds).

Mc Materials and supplies component of construction contracts. The material share of 60% is based in section 12.0212, U.S. Dept of Commerce National Input/Output Structure, 1977.

Ms Materials and supplies component of services contracts. The material share of 18.3% is based on section 73.0102, U.S. Dept of Commerce National Input/Output Structure, 1977.

PDoD DoD national secondary job productivity factor.

Prs Sales per worker in the trade/service sector.

Pw Sales per worker in the wholesale sector.

RTOT Initial expenditure remaining in the EIR from AF installation total EIR procurements, construction, and income expenditure.

SJC Secondary jobs off base in the EIR created by AF base EIR expenditures (not including military or NAF, AAFES, contract civilians, and other civilians, n.e.i., employed by the installation.)

T Local temporary duty expenditures off base in the EIR.

TEIall Estimated total economic impact based on a national average multiplier (including direct, indirect, and induced effects) of the AF installation EIR expenditures.

TEIeir Total economic impact in the EIR (including direct, indirect, and induced effects) of the AF installation EIR expenditures.

Ycon Income spent in the EIR from payroll component of the construction contract expenditures. Based on a labor share of 38.4% for sector 12.0212, U.S. Dept. of Commerce National Input/Output Structure, 1977 and assumes an APC of 0.62.

Ycx & Ycs Civilian payroll spent in the EIR by base civilian personnel including NAF, AAFES, and civil service employees. (Note: Does not include income of civilians in private sector businesses located on base such as branch banks and commercial food establishments.)

Ymon Military payroll spent in the EIR by military permanent party and trainees living on base.

Ymoff Military payroll spent in the EIR by military personnel living off base.

Ys Income spent in the EIR from payroll component of service contracts. Base on labor share of 52.4% for sector 73.0102, U.S. Dept. of Commerce National Input/Output Structure, 1977, and assumes an APC of 0.62.

DISTRIBUTION

CIVILIAN

Governor, State of Michigan
U.S. Senator (2)
U.S. Representative, 11th District
State Senator (2)
State Representatives (3)
Marquette City Manager
Mayor of Marquette
Marquette Chamber of Commerce (5)
Iron County Clerk
Baraga County Clerk
Alger County Clerk

Mayor of Negaunee
Mayor of Ishpeming
Mayor of Escanaba
Forsyth Twsp Supervisor
Sands Twsp Supervisor
West Branch Twsp Supervisor
Economics Club of Marquette
Marquette Jaycees (5)
Delta County Clerk
Dickerson County Clerk
Schoolcraft County Clerk

DEPARTMENT OF DEFENSE

HQ SAC/ACC(12)	410 BMW/CC	410 STRAT HOSP (2)	46 AREFS/CC
8 AF/ACC	410 BMW/CV	410 CSG/CC	307 AREFS/CC
40 AD/CC (3)	410 BMW/DO	410 CSG/CD	410 AMS/CC
AFAA Office	410 BMW/MA	410 CSG/CCQ	410 FMS/CC
SACMET	410 BMW/RM	410 CSG/DA	410 MMS/CC
AFOSI, Det 512	410 BMW/AC	410 CSG/DP	410 OMS/CC
71 FTW, OL-A	410 BMW/HO (4)	410 CSG/DW	410 SUPS/CC
U. S. Army Corps of Engineers	410 BMW/LGC	410 CSG/HC	410 TRNSS/CC
AAFES	410 BMW/LGX	410 CSG/JA	410 CES/CC
SATAF	410 BMW/PA (80)	410 CSG/OT	410 SPS/CC
AFCOMS	410 BMW/SE	410 CSG/SS	410 SVS/CC
	410 BMW/SL	644 BMS/CC	2001 CS/CC

CRITIQUE

The K. I. Sawyer AFB Economic Resource Impact Statement is a recurring product which provides information about the base to military and civilian dignitaries and to functional managers throughout the base. Any comments or suggestions for improving the brochure will be greatly appreciated. Use the areas below and on the back of this page to indicate if the brochure is meeting your needs.

* * * * *

FROM: _____

Date

SUBJECT: FY88 Economic Resource Impact Statement (ERIS)

TO: 410 BMW/ACC
K. I. Sawyer AFB, MI 49843-5000

1. The ERIS has/has not been useful to me because

2. The selection of information/statistics included in the brochure is

___ Outstanding ___ Excellent ___ Satisfactory
___ Marginal ___ Unsatisfactory

3. The administrative/publishing quality of the brochure is

___ Outstanding ___ Excellent ___ Satisfactory
___ Marginal ___ Unsatisfactory

4. The following areas should be added, deleted, or revised as indicated:

Name/Grade

Position

Phone Number