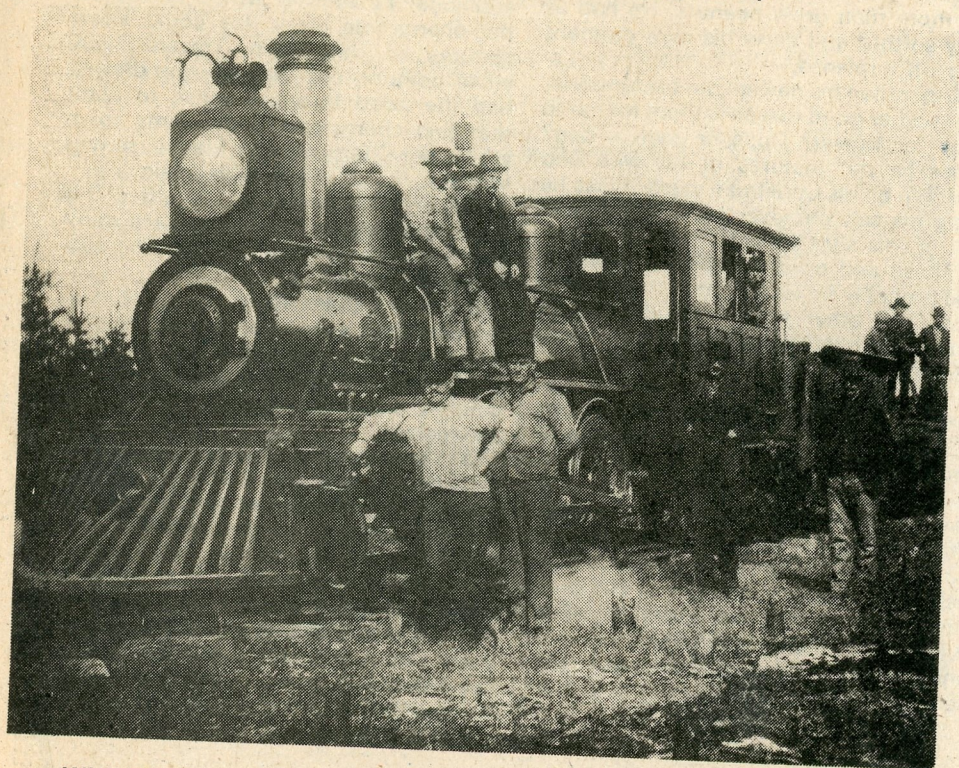


NORM JAHN LENT us this old photo of the passenger car that transported sightseers to the Big Spring, "way back when". Looks like the surrey with the

fringe on top. This was the Thompson Railroad, and what a great way to get to the Big Spring! This would be a great tourist attraction today.



WHILE SEEKING information on the request for information about a railroad by Pike Lake, we came across this photo of a Thompson Railroad engine. The names of the men are not available. It

seems that deer occasionally made contact--see the trophy on the headlight. More details on this railroad in the Memories column.