

Norden's **MON. thru SAT. 8 to 9 SUNDAY 9 to 6**

FOODLAND

**DOWNTOWN
MANISTIQUE
RIVER STREET**

Register to win a \$500 SAVINGS BOND

Drawing will be on August 30th

Pork Butt Sale

Pork Steak **\$1.39**
PER LB.

Pork Cutlets **\$1.79**
PER LB. BONELESS, CUBED

Pork Butt Roast **\$1.39**
PER LB. SEMI BONELESS

Pork Roast **\$1.59**
PER LB. BONELESS ROLLED & TIED

Pork Sausage **\$1.19**
PER LB. BULK SEASONED



STRETCH
YOUR FOOD DOLLARS HERE!

Shortening **\$1.39**
42 OZ. CAN SWIFTNING

Cookies **\$1.39**
19 OZ. PKG. NABISCO OREO

Spaghetti & Meatballs **65¢**
14 3/4 OZ. CAN FRANCO AMERICAN

Mustard **59¢**
32 OZ. JAR GENERIC

Hot Dogs **\$2.99**
1/2 lb. pk. VOLLWERTHS

Polish Sausage **\$1.79**
PER LB. VOLLWERTHS

Canadian Bacon **\$1.89**
PER LB. ARMOURS SLICED

Ham **\$10.49**
5# CAN ARMOUR STAR FULLY COOKED BONELESS CANNED

Pizza Mix **\$1.79**
28 OZ. PCK. CHEF BOY AR DEE DOUBLE CHEESE

Margarine **55¢**
1# QTS. SHEDD'S GOLD N. CORN

Kool Aid **\$2.39**
32 OZ. CANS ALL FLAVORS

Bread Dough **\$1.09**
5-1 LB. LOAVES DAKOTA HEARTH

Pepsi **\$1.75**
8-16 OZ. BOTTLES PLUS DEPOSIT

Diet Pepsi

Mountain Dew

Pork & Beans **39¢**
16 OZ. CAN STOKELY VAN CAMPS

Pork & Beans **49¢**
21 OZ. CAN STOKELY VAN CAMPS

2% Milk **\$1.65**
1 GAL. KEMPS OR VERIFINE

PRODUCE SPECIALS

Cauliflower **99¢**
EACH FRESH LARGE HEADS

Onions **19¢**
PER LB. MICH. MEDIUM

It's Fair Time

Plastic Cups **\$1.09**
5 OZ.-50 CT. PCK. SOLO

Barbecue Sauce **65¢**
16 OZ. JAR HEINZ

BAKERY SPECIALS

TRY OUR In Store Bakery

Fresh Baked Daily

Peaches **49¢**
PER LB. CALIFORNIA

Melons **69¢**
EACH MICH. HONEY ROCK

Trash Can Bags **\$1.89**
20 CT.-PCK. HEFTY

40¢ off Tony's Red Baron Pizza

Hot Samples While You Shop

Norden's Prices Good August 26th THRU August 29th

Beer **\$5.95**
24-12 OZ. CANS OLD MILWAUKEE

PLUS DEPOSIT

Norden's **FAST CHECK-OUT SERVICE!**

FOODLAND

BEER & WINE TO GO!
ICE available daily

TIRE OF HIGH PRICES??? COMPARE
SHOP AND SAVE AT FOODLAND! NO STAMPS...
NO GAMES...NO GIMMICKS! JUST ROCK BOTTOM PRICES!!
Foodland Accepts FOOD STAMPS

We have all your favorite SUNDAY PAPERS!



Mr. and Mrs. Floyd S. Miller

Lisa DeMers, Floyd Miller wed at St. Francis

Lisa Marie DeMers, daughter of Allen and Joyce DeMers, and Floyd Stanley Miller, son of Kenneth and Clarice Miller, were married at 2 p.m. on August 14, 1982. Father James Menapace officiated at the double-ring ceremony at St. Francis de Sales Church.

The bride, given in marriage by her parents, wore a long white gown which featured a high neckline and full sleeves. She carried a bouquet of yellow roses and baby's breath.

Lisa Charlier was the maid of honor. Bridesmaids were Melissa DeMers, Desiree DeMers and Luana Miller. They carried bouquets of

miniature blue carnations, daisies and baby's breath.

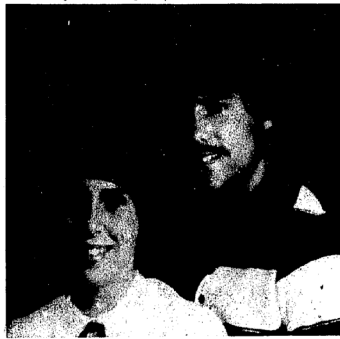
Best man was Mark Lambert, Roy Burns, Harold Toennesen and John Quick were ushers.

Gwen Haberstick was flower girl. Jason Tirk served as ring bearer.

Following the ceremony, a reception was held at the armory.

The bride is a 1981 graduate of Manistique High School. The groom, who graduated from Manistique High School in 1978, is in the U.S. Navy.

The couple will make their home in Jacksonville, Fla.



Lorie Ann Halvorsen and James David Demers

Halvorsen and Demers to wed

Marie and Jerome Halvorsen of 1008 West Lakeshore Dr. recently announced the engagement of their daughter, Lorie Ann, to James David Demers, son of Mary Ann and Richard Demers of 210 North Houghton.

Lorie is a 1982 graduate of Manistique High School and will attend Suomi College in the fall.

Jim is a 1980 graduate of Manistique High School and is currently employed in Manistique.

No wedding date has been set.

Send letters to: Schoolcraft County Comm. Mental Health Clinic, 115 N. Lake St., P.O. Box 149, Manistique, Mich. 49854.

Patsy Calhoun named Irwin's chairwoman

State Senator Mitch Irwin has announced that Patsy Calhoun will be his campaign chairwoman for Schoolcraft County.

"The key to my campaign success will be earning the support of people like Patsy," said Irwin. "Our campaign will be an issue-oriented grass roots effort, and I'm really pleased that Patsy has volunteered to help coordinate my campaign."

Patsy is a lifetime resident of Manistique and works at Manistique Area Schools. Patsy has been active in many civic affairs and lives at 111 S. Third Street, Manistique, with her husband Herb and their three children, Barb, Steve, and Billy.

Anyone wishing to contact the Irwin campaign may do so by getting in touch with Patsy or by calling either the Traverse City headquarters at 616-946-4111, or Sault Ste. Marie headquarters at 906/632-4111.

Annual hospice meeting set

Schoolcraft Area Hospice, Inc. will hold its annual meeting on Sept. 2 at 7 p.m. at the county courthouse conference room.

At home with Sarah

by Sarah Bignall

Another request that has taken a little time tracking down is this Taco Salad dip. It is delicious, and though good any time of the year, would be a great summer dip for a Patio party or to serve summer company that so many of us have had this year. Also, these vegetables are available right now at reasonable prices if you don't have them in your garden.

TACO SALAD DIP

1 (8 oz.) pkg. cream cheese
1 (8 oz.) bottle Taco Sauce (mild or hot)

Onions
Tomatoes
Lettuce
Cheddar Cheese

Soften cream cheese and mix with some of the Taco Sauce to make it dipping consistency, not too much sauce - just enough to make the cheese creamy and smooth.

Put cream cheese mixture in a glass pie plate or a Quiche dish or any low bowl with sides.

Chop vegetables into small pieces. Remember, these vegetables must be small enough to pick up with a corn chip so they must be small, but retain their identity.

Layer chopped onions, tomatoes and lettuce over cream cheese mixture. Pour remaining Taco Sauce over vegetables. Cover with shredded cheddar cheese. Serve with Nacho Chips or Tortilla Corn Chips. Um-m-m - Delicious!

Sarah says...To start your own Avocado plant you must root the Avocado seed in a CLEAR glass - and be patient!

Food for thought...It takes 20 years to become an overnight success.

GURTI'S

C.A. Lewis
586-9757

There will be an open house from 6 to 9 p.m. at the Curtis Baptist Church in honor of the Rev. Larry and Virginia Niswonger. Niswonger is retiring as pastor of Curtis Baptist Church.

Vacation Bible School was held at the church from Aug. 9-13. Mrs. Ken Gehrett and Mrs. Tom Pann, Jr. were directors. The theme of the course was "Making Christ Known Around the World" and the project was helping purchase a van for the St. Louis Baptist Childrens Home with over \$120 collected for the cause.

Happy 21st Birthday

AIC Kevin Atkinson
Love Mom and Dad
(and all your friends from Thompson)

The Rev. Daniel Pann has been selected to succeed Pastor Niswonger and he with his wife, Cindy, and family have moved here from Queen Creek, Ariz.

Cliff Lewis of Curtis was testimonial reader at the ordination of Thomas Kreider Ray as Bishop in the Northern Michigan Diocese in the Episcopal Church. Also reading a testimonial was Charles Stark of Musising, district court judge in Schoolcraft County. Over 1,000 people attended the Aug. 21 ordination, held at St. Michael's Roman Catholic Church at Marquette.

The Manistique Lakes Lions Club held a corn roast at the local park on Sunday. About 50 members and their families were present. The club decided to cancel the "brunch" planned for August.

First Baptist

Sunday, Aug. 29, is Rally Day at the First Baptist Church. The service begins at 9:45 a.m.

Young adults who are interested in a canoe trip the weekend of September 17 to 19, are asked to sign up at the church.

Kathy Mickelson will work in the nursery on Sunday.



HAPPY BIRTHDAY AUNT ELSIE
August 29, 1982

From all of your kids

Gulliver Lions Club

The Gulliver Lions Club will sponsor glaucoma and blood-pressure testing in its mobile testing unit this Saturday at the Schoolcraft County Fair. The tests, given free of charge, will be available all day Saturday at the fair grounds.

Mental Health Board seeks new members

The Schoolcraft County Community Mental Health Board of Directors is requesting letters of interest from individuals wanting to serve on the Mental Health Board. Applicants should state why they want this position and how they can contribute to the mental health field.

Send letters to: Schoolcraft County Comm. Mental Health Clinic, 115 N. Lake St., P.O. Box 149, Manistique, Mich. 49854.

EDWARD D. JONES & CO.

MEMBER NEW YORK STOCK EXCHANGE INC.



"I just learned six good reasons to invest my money through Edward D. Jones & Co."

- | | | | |
|--------------------------------------------|--------|----------------------------------|--------|
| 1. U.S. Government Guaranteed Bonds | 12.73% | 4. Insured Tax-Free Bonds | 11.50% |
| 2. Federal Income Tax-Free Municipal Bonds | 13.00% | 5. Protected Stocks | 14.25% |
| 3. Investment Grade Corporate Bonds | 15.75% | 6. IRA and ROTH Retirement Plans | 15.50% |
- You can take advantage of today's high yields by investing your money where it will help you fight inflation and taxes. Please call us or drop by for more information.

Tom Neumann or Dave Nyquist
617 Ludington St., Escanaba
786-9310 or 786-9311

Edward D. Jones & Co.
Members New York Stock Exchange, Inc.
"Member Securities Investor Protection Corporation"

Pioneer Park to close Sept. 1

At a regular meeting of the Schoolcraft County Historical Society held Monday evening, it was decided to close the Pioneer Park historical park beside the old water tower on Sept. 1.

A very successful summer was reported by curator Alex Meron. New display cases have been installed and many new acquisitions have been donated-including a historical anchor.

A park committee of Billie Doyle, Earl and Katharine LeBrosseur was appointed to meet with Al Hepker, Glenn Pawley and a member of State Park Commission to set up date and location for moving the Paul Bunyan statue.

Special thanks were given to Mike Fackety and Ralph Burt for moving the treadmill; to Thos. Awater; Nedra Disinger and Dorothy Sawyer for volunteer guides; Don Martin for painting; Bill Bauman of VFW for donation of flag; and to Hepker for a flag pole.

Memorials were received from the Don Schulte family for Vic Schuster and James Talbot.

New members as reported by Sally

Setting are: Annis Carney, Manistique; Mrs. Sigee Cameron, Manistique; Mrs. Oliver Merwin, Midland; Mrs. Virginia St. John, Oconto Falls, Wis.; Mrs. Ingrid Spiegler, Lindenhurst, Ill.; Lowell and Anne Olsen, Manistique; Mrs. Paul Schneider, Thompson; and Mr. and Mrs. John L. Weiss, Thompson.

The next regular meeting of the society will be held Monday, Sept. 27, at 7 p.m. in the courthouse.

Moose ladies to meet Sept. 1

The women's Moose Lodge will have a craft demonstration by Mary Lou part of its next meeting to be held at the Moose Lodge next Wednesday, Sept. 1, at 7 p.m.

All Moose ladies and wives of Moose members and their guests are welcome to attend.

Zion women to host workshop

The Zion Lutheran Church Women will host a "Leadership Membership Development" workshop on Thursday, Sept. 2 at 12:30 p.m. in Augustana Hall.

This workshop is for all LCW members and is intended to help leaders, future leaders and interested women to understand the LCW's purpose and to acquaint them with the many resources available. Coffee will be available from 12:30-30. The workshop begins promptly at 12:30 p.m.

St. Martin's Circle to meet Sept. 2

The next meeting of St. Martin's Circle will be on Thursday, Sept. 2, with a 6:30 p.m. potluck at the Helen Lesica cottage on Gulliver Lake.

The Circle met at the summer home of Noreen McLaughlin on Thursday, Aug. 5 for a 6:30 p.m. potluck supper. Following the supper, a meeting was held. A prayer

was said for recently-deceased member Lillian Hough. Election of officers was held with Helen Davenport elected president and Betty Fackety secretary-treasurer.

Cards were played with prizes awarded to Mae Barker in canasta and Bev John in bridge. Mae won the door prize also.

OPENING SOON SEPT. 1st

A body that is in shape is both beautiful & healthy.

Let us show you how to get that body at

THE BODYSHOP

108A S. Cedar (Formerly Vicki's Fitness Center)
341-8296

BACK TO SCHOOL SPECIALS

For the Student and Teacher

For the Gals

Wrangler Top & Jeans
Corduroy Slacks
Skirts & Vests
Blouses
Winter Jackets

For the Guys

Levis, Denims
Corduroys
Levi Shirts
Casual Slacks
Short & Long Sleeve Shirts
Sweaters

Complete line of back-to-school shoes...
Canvas Nikes,
Leathers, Suedes, Boots

Samsonite Luggage
30% off

Peoples

Editorial

The voice of Schoolcraft County since 1876.

Soo Line crossing Squeaky wheels get smooth ride

The squeaky wheel gets the grease, they say, and the truth of that adage was aptly demonstrated recently.

It has been years since the Soo Line Railroad crossing on Deer Street has been smooth enough to drive over without shaking out passengers' dental work, but that should change soon. Jerry Nielsen, regional engineer for the Soo Line, said Monday that work has already begun on smoothing out the crossing and that it should be finished in a week or so.

In addition, Nielsen said that the crossing signals at Houghton Avenue and Deer Street should now be working properly. You know the ones—they're that noisy, noisy, noisy signal, aren't they? Well, without a train in sight, during you to cross.

Repair of the signals and the crossing surface at Deer Street is good news, especially since both have been a source of gripes for some time. Even more encouraging is the way in which the problem was addressed.

After again hearing complaints last month, the City Council expressed frustration with the whole blinking situation, so to speak. It directed Public Safety Director Joe McDonough to issue tickets whenever possible to the Soo Line in hopes the company would get the message, clean up its act and smooth out its crossing.

Instead, McDonough got together with City Attorney Bruce Plackowski and took a more direct approach: beef directly to the company. They talked and wrote to Soo Line officials explaining the problem and requested some relief, please.

Lo and behold, the tact worked. The signals were fixed and plans to smooth the Deer Street crossing pushed up. Nielsen, the engineer for Soo Line, admitted the pressure by city officials was a factor in repairing the crossing sooner. "Well, I'll tell you," he said, "We had a long-range plan to do it, but the city's interest kind of expedited it."

According to McDonough, there was little arm-twisting needed to get a response from the Soo Line. "There was no objection. They said they understood the problem and acted quickly to resolve it," he said. "We haven't had any problem the last couple of weeks," McDonough said.

Good. May all the city's problems work themselves out so nicely after a little communication is tried. Hats off to McDonough, Plackowski and the powers that be at the Soo Line for behaving like gulls.

DNR regs kill gulls

Dear Editor:

A large notation appeared in your August 19th edition which read **KILLING SEAGULLS A STATE AND FEDERAL OFFENSE** (by the DNR office at Newberry).

I find it ironic that the DNR would publish such a warning when we, the public, have to watch them die in

hordes from starvation. The reason so many are hit by cars is that winter they are simply too weak to try and get out of the way. I've counted 50 such deaths on my 40 acres alone.

They close all the dumps to garbage disposal, and now the fishermen can no longer clean their fish in Lake Michigan, so consequently the gulls are coming inland in search of food. It's bad enough in

'Code of honor' protects

Dear Editor:

Recently several dirt bikers rode into Fayette State Park harassing bathers and tourists in the historic townsite. These so called "young adults" were travelling 20 to 30 miles an hour, jumping hills, etc.

When an employee tried to stop one, the biker nearly ran him down. Both the State Police and the Fayette State Park staff have several strong leads as to who they are. However, when trying to gather information, no one seems to know who owns the bikes or who was riding them.

City Police

Manistique Public Safety officers are looking for a green 1973 Buick LeSabre, which was taken from the parking lot at the Manistique Medical Center on Tuesday. The vehicle's license number is W4Y 544.

Police said Mary LaFord of 115 N. Second St. left her keys in the car when she went into the medical center. When she returned to the parking lot, the car was gone. Anyone with any information about the vehicle is requested to call the Manistique Public Safety department, 341-2133.

watch the dying process, but they are also driving tourists out of the area, because they hunt the parks where people are trying to eat, and also all the restaurants in town, looking for a bite to eat.

Nature intended them as our clean-up committee along the Lakes,

and if our brain squeezers would do what our brain squeezers would do, they'd be doing what the Good Lord put them here for.

So, wh n these beautiful Gulls are extant, LNH, you'll be the culprit, not John D. Public. I think it's a crime!

Jean M. Bowman, R.R. #1, Manistique, Michigan.

In a small community such as Fayette and Fainton everyone knows what is going on in the community yet there seems to be a code of honor amongst young adults not to "rat" or "fink" even when someone clearly has been seriously injured. If these individuals are not apprehended they may very well attempt something more serious.

It's time someone did some soul searching in there is no honor in a code that protects vandals and those who break the law.

William Manning Park Manager



Sun & water

SHIMMERING LIKE JEWELRY off the water one of the area's many lakes, this late summer sun silhouettes a twisted tree trunk as it descends into the west.

School board votes to hire two teachers

(continued from front page)

Lloyd Spencer encouraged Gronbeck to run for a School Board seat in the annual June election, when DeWinn

ter's appointment will expire. He hired a high school science teacher and a special education teacher.

The science teacher hired, Steven J. Mueller, was one of 80 to apply for the vacancy, according to high school Principal John Males. Of those 80, only 20 met the requirements of the high school's accrediting agency, Males said.

Mueller has a bachelor's degree from Central Michigan University and has taught in Kentucky and Kenosha, Wis.

On the recommendation of Bonifas, the board voted unanimously to hire Michelle A. Burley of Menominee as a special education teacher for the mentally impaired. Burley is a Michigan State University graduate. Bonifas said her qualifications for the first-year teaching position were epitomized by her "excellent" academic record and involvement in club, dramatics and the student newspaper at Michigan State.

--Heard that the first negotiating session with the school district's administrative staff had been held.

--Reviewed the teaching schedule for the district's schools with Males and Bonifas.

In the high school, Males said that fewer sections in different course offerings would be available this year, requiring that teachers handle a greater number of class subjects than last year.

"Manistique faculty have been accustomed to one, maybe two preparations. Very seldom were there three. I think that is going to be past now. There are some people who are upset about their increased preparation," Males said. But, he added, "I emphasize that I don't think anyone is overworked here."

Class size in the high school this year will range from six students in some of the specialty business

courses to 35 in some sections of English, Males said.

NOTICE PROPOSED USE HEARING OF FEDERAL REVENUE SHARING 1983

In compliance with Federal Revenue Sharing regulations, notice is hereby given that a public hearing will be held on proposed use of 1983 Revenue Sharing Expenditures.

Time: 7:00 PM, Tuesday, September 7, 1982

Place: Schoolcraft County Building Circuit Court Room Walnut St. Manistique, MI.

The public will be given the opportunity to make oral and written suggestions regarding possible use of Revenue Sharing Funds and present these to the finance committee. These suggestions will be then used for presentation to the County Board of Commissioners as the proposed 1983 Federal Revenue Sharing Budget at the September 21st, 1982 meeting at 7:00 PM.

Amount of unspent funds	\$ 0-
Amount to be received for 1983	109,919.

MERWIN A. WHITE, Chairman Schoolcraft County Board of Commissioners August 24, 1982

Council approves rezoning

(continued from front page)

people on welfare and other government assistance.

He said that a market survey in Manistique showed that 60 people with incomes between \$11,000 and \$23,000 had expressed interest in living in the 40 units available in the complex were built. The federal financing of the project, if received, does not put a limit on the amount of rent charged, Schneider said.

"There is no subsidized rental. There is no restriction on rents—we'll charge whatever the market will bear. We have over 2,500 units in the state of Michigan and we don't have any empty," he said. Schneider also noted that 28 of the complex's 40 units would be designed for elderly residents. Douglas still maintained that, even with a high proportion of elderly residents, "With one hell-raising bunch of teen-boppers you won't have any senior citizens" there for long.

Vaughan, who had also voted against rezoning when it first came before the council, said he felt Manistique faced a housing glut if all the construction currently planned is carried out.

Besides the Teklin project, he cited 48 units of low-income elderly housing planned by the county in Manistique and another 36 houses for low-income Indians slated for a site east of town. According to plans submitted by architect Leo Stein, the Teklin project would consist of five two-story buildings arranged in a semi-circle. Apartments would range in size from 575 to 720 square feet.

The council had earlier approved a similar rezoning for the county's 48-unit senior citizens housing complex to be constructed near the Teklin site.

In other matters, the council: --Decided to again ask voters to approve a \$2.2 million bond issue to

help finance repair and separation of the city's storm and sanitary sewer network (see separate story).

--Again heard complaints from Garden Ave. residents about rattling buses on the street and rowdy behavior of residents of the Cottage Grove Apartments. County zoning administrator Ed Daunat attended the meeting and said the houses in question were part of the John Larson estate. He said that, according to attorney George Wood, once the estate was settled in court, the houses would be repaired and cleaned up.

The residents also complained of late night noise and litter from the Cottage Grove apartments. According to Gary Koschmider, "There's no relief in sight. If something isn't done about it, I'm sure people who live over that street are going to do something about it."

SCHOOLCRAFT COUNTY NOTICE OF PUBLIC HEARING ON INCREASING PROPERTY TAXES

The County Board of Commissioners of Schoolcraft County will hold a public hearing at 7:00 P.M. on September 7, 1982, at the courthouse in the city of Manistique to receive testimony and discuss a proposed additional 1982 county operating millage rate.

Because of a new state law (Act 5 of 1982), the county's base tax rate is reduced to 5.3 mills for 1982. However, the county has complete authority to establish the number of mills to be levied from within its authorized millage rate. In order to maintain basic county services, the county proposes to levy an additional millage rate of 2.2 mills above the 5.3 mill base tax rate, or a total operating rate of 7.5 mills (\$7.50 per \$1000 SEV). This will provide an estimated 41.51 percent over such revenues generated by levies permitted without holding a hearing. 37.74 percent of the above increase is due to recent millage election (up to 2 mills) for the Medical Care Center. Public comment is welcome at the hearing.

Ferdinand Lesica, County Clerk Schoolcraft County

Wood/Coal Furnace

Substantially save fuel dollars! A ThermoPride Wood/Coal Furnace... **\$965**

It's The 7th Annual **Barbequed BEEF ROAST**

At the **3-Mile Supper Club**

Serving from 2 'til 8:00pm

FEATURING **The roasting of a U.P. STATE FAIR AWARD WINNING BEEF**

AND **LIVE MUSIC BY FLAT BROKE**

COME AND JOIN THE PARTY AT THE THREE MILE!!

PLUMBERY HOME CENTER

Hohlak's, Inc. 225 Deer 341-5065

We have you plumbing like a pro. 341-5612

We now close at 5:30 on Fridays

Attend The Schoolcraft County

FAIR



**EXHIBITS
& PRIZES**



Friday, Aug. 27

- 10:00 a.m.-Fair Opens
 - 12:00 a.m.-4-H Flag Raising Ceremony
 - 1:00 p.m.-Pickling demonstration-fair building
 - 3:00 p.m.-Food drying demonstration-fair building
 - 5 p.m.-Canning demonstration-fair building
 - 5 p.m.-Queen contestants dinner-Ramsada Inn
 - 7 p.m.-Queen Contest-bandshell
- Saturday, Aug. 28
- 9:00 a.m.-Fair Opens
 - 10:00 a.m.-Kiddle sawdust pile-fair building
 - 12:00 a.m.-Polka Dots-bandshell
 - 1:00 p.m.-4-H Horse Show
 - 1:30 p.m.-Karate Demonstration-bandshell
 - 3:00 p.m.-Senior Citizens Band performance-bandshell
 - 4:00 p.m.-Kiddle sawdust pile-fair building
 - 6:00 p.m.-Teacups square dance performance-fair building
 - 9:30 p.m.-Frontier Dance fundraiser, music by The Wayfarers-fair building
- Sunday, Aug. 29
- 9:00 a.m.-Fair Opens
 - 11:30 a.m.-4-H Performing Arts Group-bandshell
 - 1:00 p.m.-Volunteer Firemen Water Fight-fair building field
 - 2:30 p.m.-4-H Performing Arts Group-bandshell

In addition to the scheduled events, the Schoolcraft County 4-H Group will provide demonstrations on various topics throughout the day on Saturday and Sunday.

Frontier Dance
Aug. 28, 1982
at the
Schoolcraft County
Fair Building

Dance to the music of the
Wayfarers
Fine musicians
from the community

The dance starts at
9:30pm and ends at **1:30pm**

Tickets are \$3 a single
or \$5 a couple

Refreshments
will be available.

Kiddle & Teen Shop 214 S. Cedar	Hair Connection 205 S. Cedar	City Motel West US-2
Hulla Radio & TV Service 116 Pearl	Dick's IGA 220 S. Maple	Savings Agency Inc. 234 S. Cedar
Gambles Store 231 S. Cedar	Alex Creighton Ford 244 S. Cedar	Penney's 237 S. Cedar
Norden's Foodland 140 River	Elias Bros. Restaurants E US 2	Males Pharmacy 121 S. Cedar
State Farm 210 Oak	Kaupila Funeral Home 312 Arbutus	Bill & Kathy's Country Store M-94
Strasler Tire Service 103 River	OK Auto Supply 164 River	Ollie's Red Owl 200 Deer
Breaker's Motel Lake Shore Dr.	Statewide Real Estate E US 2	Farm Bureau Insurance 222½ Oak
Bluebird E US 2	Wood's Distributing, Inc. 310 Arbutus Chippewa Ave.	Pioneer-Tribune 212 Walnut
C-L True Value 145 River	Nelson's Phillips 66 234 Deer	

Nine to vie Friday for Schoolcraft County Fair Queen honor



Paula Adams

Laurie A. Boyer

Jill Vickery



LeAnn Tyler



Tammy Streeter



Carla Ann Krause



Bonnie Siddall



Tammy Smith



Lisa Kaye White

One of the highlights of the Schoolcraft County Fair each year is the crowning of the Fair Queen. R reigning queen Lisa DeMers won over 10 other contestants in last year's judging; this year, nine young women will vie for the honor.

Donna Gilroy, organizer of the queen pageant this year, said all contestants should meet Friday at 1:30 p.m. in the second floor conference room at the courthous for orientation.

At 5 p.m. the contestants will be guests of the Ramada Inn for dinner. The pageant itself will begin at 7 p.m. at the band shell on the fair grounds.

During the pageant, contestants will speak briefly about themselves, their interests, hobbies, families and future plans. They will appear before judges in an evening gown and in a special costume in keeping with the "Pioneer Days" theme of this year's fair.

The girl chosen as queen will receive a \$50 cash prize, a trophy and a bouquet of flowers. Runner up to the queen will receive \$25 and a trophy. "Miss Congeniality," to be chosen by the queen candidates themselves, will also receive a trophy.

Here is a look at this year's queen candidates:

Jill Vickery, 16, is 5 feet, 5 inches tall and has brown hair and brown eyes. She is the daughter of Mr. and Mrs. Bruce Henry of Manistique. She attends Manistique High School.

Laurie A. Boyer, 17, is 5 feet, 3 inches tall and has brown hair and hazel eyes. She is the daughter of Barbara and Anthony Boyer of Manistique. She attends Manistique High School.

Paula Adams, 17, is 5 feet, 6 1/2 inches tall. She has light brown hair and green eyes. She is the daughter of Joseph and Karen Frye of Manistique. She attends Manistique High School.

Tammy Streeter, 20, is 5 feet tall and has blonde hair and blue eyes. She is the daughter of Duane and Fern Streeter of Germfak. She attends Ohio Technological University.

Tammy Smith, 16, is 5 feet 7 inches tall and has blonde hair and blue eyes. She is the daughter of

James and Marcia Lakosky of Manistique. She attends Manistique High School.

LeAnn Tyler, 16, is 5 feet 6 inches tall and has brown hair and blue eyes. She is the daughter of Mr. and Mrs. W. Ted Tyler of Manistique. She attends Manistique High School.

Lisa Kaye White, 16, is 5 feet 8 1/2 inches tall and has blonde hair and green eyes. She is the daughter of Mike and Margaret White of Manistique. She attends Manistique High School.

Carla Ann Krause, 16, is 5 feet 7 inches tall and has brown hair and blue eyes. She is the daughter of Mr. and Mrs. David Beaudre of Manistique. She attends Manistique High School.

Bonnie Siddall, 16, is 5 feet 6 inches tall and has blonde hair and blue eyes. She is the daughter of Rick and Donna Siddall of Gulliver. She attends Manistique High School.

Fair kicks off 6th year this weekend

(continued from page 1)

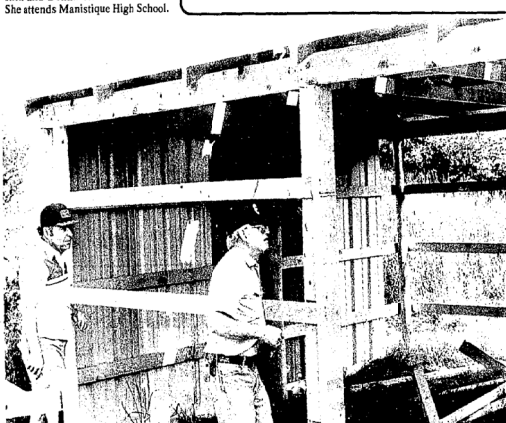
The fair will officially open at 10 a.m. Friday. A highlight of opening day will be the crowning of the Schoolcraft County Fair Queen at 7 p.m. at the band shell. Nine local young women will vie for the annual honor (see pictures and profiles on page 7A).

Free parking is available at the Fair grounds. Another highlight to the fair will be a fundraising dance featuring the music of the Waylagers Saturday night in the fair building. Tickets to hear this local band will be sold for \$3 apiece and \$5 a couple.

The dance will start at 9:30 p.m. and wind up at 1:30 a.m. Refreshments will be available.

A 4-H horse show will also be held Saturday at the horse arena on the fair grounds starting at 1 p.m.

Events on Sunday include special performances by a Cooperative Extension Service Performing Arts group at the band shell at 11:30 a.m. and 2:30 p.m.



NEW FAIR BUILDING: Al Hepker, left, County Extension Office director, and Don Shultz, County Fair Board president, inspect the new small animal building being built for the fair to be held Aug. 27, 28 and 29. Most of the materials for the building were donated. Hepker said, and he anticipates the cost for the building will be less than \$500.

BACK TO SCHOOL

Plaid Shirts
REG. \$22.99
\$14.99

Corduroy JEANS
SIZES 29 to 42.....
\$13.99
BOY'S 8 to 18*
Regular & Slim Styles.....
\$9.99

Levi's

PRE-WASHED... WITH MINOR IMPERFECTIONS ALL REPAIRED AT THE LEVI FACTORY...
*WAIST SIZES 29-34 *BOY'S WAIST 24-28

\$10.99 \$7.99

▶LONG SLEEVE◀

Plaid Shirts For School!

Men's Sizes S-M-L-XL
REG. \$14 NOW **\$9.99**
Boys Sizes 8-19
REG. \$9 NOW **\$6.99**

▶SHORT SLEEVE◀

Plaid Shirts
SIZES S-M-L-XL
REG. \$13 **\$6.99**

Hanes UNDERWEAR

For Back-to-School...
25% OFF
on Men's and Boys' Underwear

Boy's Short Sleeve
Knits
1/2 Price REG. \$4.99
\$2.99

Adult & Youth
Baseball Knits
\$4.99

AND... WHILE YOU'RE HERE... REGISTER TO WIN... IN THE MANISTIQUE MERCHANTS FAIR DAYS DRAWING!! SIGN UP FOR YOUR CHANCE TO WIN GIFT CERTIFICATES REDEEMABLE AT ANY OF THE PARTICIPATING AREA MERCHANTS... DRAWINGS WILL BE HELD DURING THE SCHOOLCRAFT COUNTY FAIR!!... SIGN IN... TODAY!!

LAUERMANS of Manistique

VISA master charge THE INTERBANK CARD

STORE HOURS: Monday through Thursday and Saturday from 9 a.m. until 5 p.m. and Friday from 9 a.m. until 8:30 p.m.
226 South Cedar Street

DICK'S

220 SOUTH MAPLE
PHONE: 341-8070

We reserve the right to limit quantities

U.S.D.A. CHOICE-CENTER CUT

CHUCK ROAST

lb. **\$1.39**



Store Hours:
Daily 8am-9pm
Sunday 9am-6pm

PRICES IN EFFECT THRU
SATURDAY AUGUST 28TH, 1982



GRADE "A" FAMILY PACK

Fryers	lb.	57¢
FRESH GROUND Beef Chuck	lb.	\$1.49
U.S.D.A. CHOICE Bnls. Chuck Roast	lb.	\$1.59
U.S.D.A. CHOICE-ARM CUT Chuck Roast	lb.	\$1.49



This week's Gold Rush is...
\$200

If you are not registered—ask for details in the store.
This Week's Gold Rush Name Drawn...

Leonard Nedeau Cooks, Mi.
Card not punched

KNEIP OVEN ROAST OR IGA CORNED Beef Brisket	lb.	\$1.59	NO. 1 BULK Sliced Bacon	lb.	\$1.69
---------------------------------------------	-----	--------	-------------------------	-----	--------

SWIFTS *REG. *BEEF Sizzlean	12 OZ. PKG.	\$1.59
MR. TURKEY Turkey Franks	1-LB. PKG.	89¢
DUBUQUE-BULK BREAKFAST (LINKS) Sausage	lb.	\$1.59

P.M. Game Hens	15 OZ.	99¢
STATE FAIR Corn Dogs	1-LB. PKG.	\$1.69

NEW!! IGA-POLSKA KIELBASA OR Smoked Sausage	lb.	\$1.89
-------------------------------------------------------	-----	--------

FRESH LIKE *WHOLE KERNEL CORN OR
Cream Style Corn
2 12 OZ. CANS **85¢**

WILDERNESS
Cherry Pie Filling
21 OZ. CAN **99¢**

Pepsi, Diet Pepsi Mountain Dew
\$1.89 6 PK. PLUS DEPOSIT

FRESH LIKE *CUT GREEN BEANS *WHOLE KERNEL CORN *CREAM STYLE CORN
Sweet Peas
2 14 OZ. CANS **75¢**

EVERY-DAY-LOW PRICE

Evaporated Milk	14 OZ. CAN	48¢
TOWN PRIDE Coffee Filters	200 CT. PKG.	99¢
SO-WHITE Ammonia	64 OZ. BTL.	69¢

BETTY CROCKER (12 VAR.) **Cake Mixes** 18 OZ. PKG. **79¢**

BETTY CROCKER (6 VAR.) **R.T.S. Frosting** 16 OZ. CTN. **\$1.29**

GENERIC VALUES

CREAM Cheese	8 OZ. PKG.	79¢
FABRIC Soft Sheets	40 CT. PKG.	\$1.29
COFFEE Creamer	22 OZ. BTL.	\$1.33

NABISCO CHOCOLATE SANDWICH **Cookies** 16 OZ. PKG. **\$1.49**

ROBIN HOOD OR BIG JO **Flour** 10 LB. BAG **\$1.93**

CAPRI SUN **Fruit Drinks** 4 6-3/4 OZ. BTL. **89¢**

KRAFT **Miracle Whip** 32 OZ. JAR **\$1.39**

HUNT'S **Tomato Sauce** 15 OZ. CAN **49¢**

*WIDE *NARROW **Filler Paper** 200 SHEETS **79¢**

FRANCO AMERICAN **Spaghetti 0's** 2 15 OZ. CANS **69¢**

IGA EXTRA LONG **Spaghetti** 1-LB. PKG. **59¢**

HUNT'S-WHOLE PEELED **Tomatoes** 28 OZ. CAN **85¢**

IGA **Strawberry Preserves** 18 OZ. JAR **\$1.19**

*DEC. *DESIGNER **Bounty** (JUMBO ROLL) **83¢**

SCOTTIE'S *WHITE *ASST. FACIAL **Tissue** 200 CT. **73¢**

15 CENTS-OFF LABEL LAUNDRY DETERGENT **Tide** 49 OZ. BOX **\$2.09**

DISHWASHING SOAP **Dawn** 32 OZ. BTL. **\$1.79**

TUFFY *CHUNK *HI-PRO **Dog Food** 25 LB. BAG **\$5.79**

IGA TABLEFRESH PRODUCE
HOME GROWN SWEET TENDER

Carrots 3 LB. BAG **69¢**

WHERE QUALITY AND YOU ARE NO. 1

COLORADO MOUNTAIN LION ELBERTA Peaches	lb.	69¢
THOMPSON SEEDLESS Grapes	lb.	79¢
CALIFORNIA LARGE JUICY Cantaloupe	EACH	59¢
Tomatoes	lb.	69¢
CONCORD Grapes	3/4 TO 4 LB. BOX	\$2.99

HILLS BROS. *REG. *DRIP *ELEC. PERK **Coffee** 3 LB. CAN **\$6.49**

15 CENTS OFF LABEL BIG "G" **Wheaties** 18 OZ. PKG. **\$1.49**

DAIRY

KRAFT-MARGARINE **PARKAY** 1-LB. QTRS. **49¢**

LAKETO-LAKE **Colby Cheese** 9 OZ. PKG. **\$1.25**

KRAFT *SWISS *AMERICAN **Singles** 12 OZ. PKG. **\$1.55**

VALU-CUT *SHREDDED **Mozzarella** 8 OZ. PKG. **\$1.29**

ICE CREAM **Sandwich Bars** 6 PK. CTN. **89¢**

NESTLE CRUNCH OR **Heath Bars** 6 PK. CTN. **89¢**

IGA (FROZEN) **FROZEN Orange Juice** 12 OZ. CTN. **77¢**

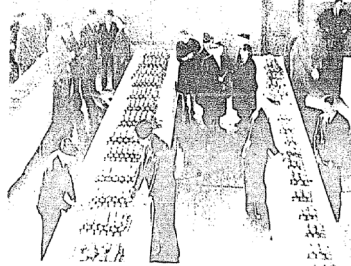
IGA-WHIPPED **Topping** 8 OZ. CTN. **55¢**

BOOTH *CORN BATTERED FILLET OR **Ocean Perch** 1-LB. PKG. **\$1.79**

NEW!! BANQUET *CHICK. PATTIES *CHICK. STICKS OR **Chicken Nuggets** 12 OZ. PKG. **\$2.19**

IGA (FROZEN) **Strawberries** 10 OZ. BOX **69¢**

Old photos spark memories of past Schoolcraft County Fairs



GRA



Our photos for this week, with one exception, are of the old fair grounds and were taken when the Schoolcraft Fair was in its heyday (No pun intended; the horse-and-buggy days were in their decline, otherwise "hay-day" would have been just as accurate a description). One of the photos is dated 1918 and I think this may be a very close time-frame for all except the interior shot of the potato display. It was taken in the old gym in 1940 and the event was the U.P. Potato Show; the judges are in the process of making their decisions. Potatoes were a big thing in the history of our county, and local producers were renowned in this specialty.

We have had good cooperation in our search this year for information and photos about the old-time fair: the shot of the trotting horse was loaned by Lydia Bouschor and all the rest came from the historical society. Also, Fred Lesica let us use the official appraisal book of the old fair buildings, so our listing of these structures is complete.

But first, back to the photos: The crowd scene in front of the old exhibition building consists of many servicemen and was probably taken either during World War I or shortly thereafter. This was very likely opening day and the main entrance to the building has just been opened.

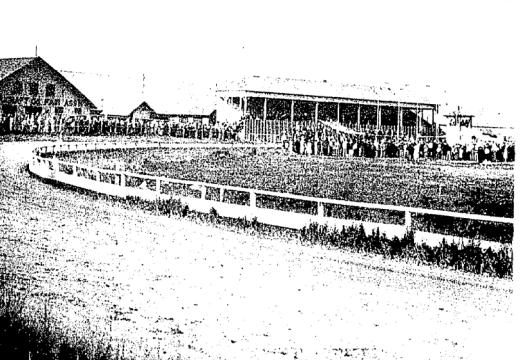
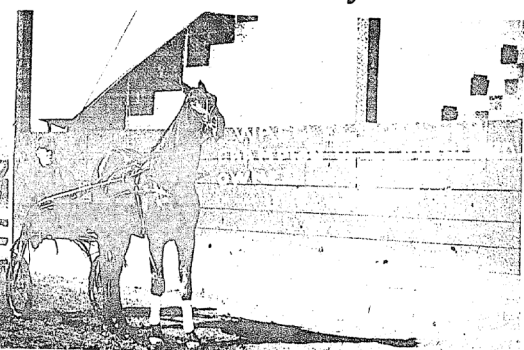
Pertinent details regarding the trotter are on the photo. I don't personally remember this horse, but the trotting races were great and the horses the main attraction for many of us kids, and the grownups too. Watching those animals preparing for their big event, and then going out to the track for the warmups and the races made a chill go up your spine that I'll never forget. And the lone pacer? I know, I've mentioned him before but at the risk of making you tired of hearing about him I've got to give him one more plug. This horse wore nothing but a ribbon and had no driver or sulky; he just went out there on the track and made a couple of circuits all by himself a

Memories Jack Orr

beautiful animal, groomed to perfection, pacing the oval in solitary glory and haughtily acknowledging the plaudits of the crowd. What a thrill. The crowd scene photo is not particularly interesting except up to now I hadn't been able to find one which included the race track judge's stand. This always used to impress me. The judges stood up there away from the madding crowd and ruled the track. They were kings for a day. In the background of this shot may be seen the Nicholson house with the courthouse dome behind it. That steeple to the left must have been the Baptist church and that small white building at the right the poultry house at the west end of the race track. This is a well-dressed crowd and there are some campaign hats here too.

Finally, the shot of the grandstand and track, with the main exhibition building in the background, is the best shot I've seen of the main buildings. This photo is one-half of a stereo pair, and seen together through a stereoscope makes a very impressive sight. This gives some idea of the size of the main exhibition building. The structure to the right in the background, behind the judge's stand, is the cattle barn.

- The buildings were listed like this in the 1933 appraisal book:
- WEST ENTRANCE TICKET HOUSE
 - SOUTH ENTRANCE BAND STAND PLATFORMS
 - EXHIBITION HALL
 - GRAND STAND
 - HORSE BARN
 - LIVESTOCK BARN
 - RACE HORSE BARN
 - HOG PENS
 - PULTRY HOUSE
 - WOMENS TOILET
 - MENS TOILET



St. Francis School orientation is Monday

St. Francis de Sales School is gearing up for the school year. Teachers are scheduled for pre-service activities on Wednesday and Thursday, Aug. 25 and 26. Wednesday's meetings, centering on learning more about and celebrating Eucharist, will be held at Marygrove retreat center in Garden. On Thursday, teachers will work on goals for the year and on the details of plans and programs.

Orientation for parents and students (approximately one and one-half hours long) will take place on Monday, Aug. 30. Students and

parents should come at the following times according to the initial of the child's last name: 10 a.m.-A to L; 1 p.m.-M to Z.

The format is changed from other years and attendance will be taken and counted. Students will meet their teachers in their respective classrooms while parents will meet with the principal in the gym.

Besides tips for a successful school year, tuition and hot lunch money will be accepted and various forms will be given out. Midway through the session parents, students and teachers will receive and discuss the

school handbook. Students and parents will then be free to browse around the classrooms.

St. Francis de Sales will generally follow the Manistique Area Schools calendar and follows the government guidelines for the hot lunch program.

To determine eligibility for federally-subsidized meals, families must 'Purrfect Reader' program ends at library

seven members, \$25,750 and eight members, \$28,600. For each additional family member, add \$2,850 to these maximum-income guidelines.

have annual incomes at or below the following levels: two-members, \$11,510; three members, \$14,340; four members, \$17,210; five members \$20,050; six members, \$22,900.

'Purrfect Reader' program ends at library

Keri Urban, Lori Urban, Rhonda Walker, Elaine Wegner and Linda Whitchelle.

'Serious Reader' prizes went to: Kimberly Bourdo, 23 books; Bobby Flynn, 53 books; Michael Flynn, 57 books; Stephanie Halling, 70 books; Nicole Homier, 41 books; Brian Moloci, 17 books; Erin Moloci, 21 books and John Stapleton, 16 books.

Readers receiving special mention were Sara DeRousha who participated in the book club while in the hospital this summer, and Manja Holland who joined and completed the club in just one week after moving here from Ann Arbor.

If readers have not already collected their certificate and prizes, they should ask the next time they come to the library.

Dems select delegates

Schoolcraft County Democrats held their twice-yearly convention on Wednesday, Aug. 18.

Earl LeBrasseur was elected chairperson and Fred Lesica, secretary of the convention.

The following delegates were elected to represent the county at the state Democratic Convention in Flint Aug. 28 and 29: Louis L. Laason of Manistique Township; Duane and Lois MacGregor of Gulliver and Nancy Veresan of Hiawatha Township.

Elected Alternates to the conven-

tion were Clayton R. St. Martin of Seney Township, Lindsey Frenette of Doyle Township, Violet Freeland of Mueller Township and Myrtle St. Martin of Seney Township.

The convention unanimously endorsed all Democratic candidates nominated at the Aug. 10th primary election and promised to work for a full victory in November.

State Senator Mitch Irwin and Probate Court Judge candidate William Werner both spoke to the convention.

The Manistique School & Public Library 'Purrfect Readers' summer reading club ended last week.

Purrfect Readers who completed their reading commitment are: Kathy Arnold, Ainette Arseneaux, Debra Arseneaux, Denise Barton, Christy Bjorkman, Max Bjorkman, Kierberly Bourdo, Kisty Brzezinski and Jenny Collingwood.

Sara DeRousha, Nicole Ehrhardt, Bobby Flynn, Michael Flynn, Steph- anie Halling, Manja Holland, Nicole Homier, Vicki Jacobs, Tim Kelly and Shannon Malloy;

Brian Moloci, Erin Moloci, George Patz, Ryan Patz, Gwen Staple- ton, John Stapleton, Darryl Sundin,

Keri Urban, Lori Urban, Rhonda Walker, Elaine Wegner and Linda Whitchelle.

'Serious Reader' prizes went to: Kimberly Bourdo, 23 books; Bobby Flynn, 53 books; Michael Flynn, 57 books; Stephanie Halling, 70 books; Nicole Homier, 41 books; Brian Moloci, 17 books; Erin Moloci, 21 books and John Stapleton, 16 books.

Readers receiving special mention were Sara DeRousha who participated in the book club while in the hospital this summer, and Manja Holland who joined and completed the club in just one week after moving here from Ann Arbor.

If readers have not already collected their certificate and prizes, they should ask the next time they come to the library.

Hunters' course starts Sept. 1

The annual Hunters' Safety course will begin Wednesday, September 1, 1982 in the community room of the high school starting at 7 p.m.

The class will also meet Sept. 2 and 3 at the high school with the final session, "Hands on Training," held on Saturday, Sept. 4, at the Manistique Rifle and Pistol Club.

This course is required for hunters from 12 to 15 years of age. Successful completion and passing of this course is necessary before a hunting license will be issued. Those individuals who are eleven years of age and will be twelve before small game season ends on March 1, 1983, are also eligible for the class. However, no license can be purchased until the twelfth birthday.

The class is free of charge.

The Hunters' Safety Course is being sponsored by the Department of Natural Resources, the Manistique Rifle and Pistol Club, the Fraternal Order of Police, and the Community School.

Registrations will be taken the first class session.

For more information, call the Community School office at 341-2195.

At Your Service for All Lines of Insurance. The largest and oldest Locally Owned Agency in Schoolcraft County.

Savings Agency, Inc.

234 S. Cedar, Manistique Phone: 341-2525

FREE HEARING SCREENING TEST FREE

AUDIOLOGICAL SERVICES GROUP, specialists in hearing testing and hearing aid prescription and fitting, will bring the MOBILE HEARING CENTER to your area. Hearing screening tests will be performed by professional audiologists to identify significant hearing losses and explain the results and recommendations. Your hearing aid and ear-mold can be checked at the same time.

Many hearing losses are gradual and painless and too often ignored until hearing clearly and understanding becomes an embarrassing, isolating problem. Fortunately, most all hearing losses can be helped. That's why a regular hearing test is so important — so valuable to you or someone you love. Plan to take advantage of this opportunity for a FREE hearing screening test.

AUDIOLOGICAL SERVICES GROUP is an approved provider for Medicaid (DSS), Autoworker Programs and other state agencies.

EVERYONE WELCOME

MANISTIQUE, MICHIGAN and SURROUNDING AREA LOCATION: PARKED at BEACHCOMBER MOTEL, (US-2) EAST LAKE SHORE DRIVE DATE: AUGUST 30, 1982 TIME: 10 A.M. to 2 P.M.

For more information Call Ishpeming 485-1542

THE MILL In Downtown Curtis

Features excellent dinners served daily 6 p.m.-10 p.m.



This Thursday the MILL will feature Music by

Jeff and John

From 9 p.m. until 11 p.m.

On Friday

The Wayfarers

will play from

9:30 p.m. until 1:30 a.m.

On Saturday, for the first time,

Marie Keefe

will play

ballroom music from the Forties. There is no cover charge

Call 586-9792 for information

Schoolcraft County Fair is the place to be

this weekend

August 27, 28 & 29

SEE YOU THERE!!



First National Bank

At MANISTIQUE, MICHIGAN 49854

BRANCH OFFICE In Garden



Senior Citizens

by Diane McClelland

Our chicken barbecue last Wednesday was really nice. The menu included chicken, corn-on-the-cob, baked beans, relish dish, rolls and watermelon for dessert. Sounds like down home cooking.

We were honored to have Senator Mitch Irwin dining with us.

Connie and Pam did all the preparation for the dinner, and a very fine job they did.

We're getting ready to put our cook book together. If you haven't given us any of your recipes, please take a few minutes to write them down. Our plans are to have the cook book ready for Christmas. They will make great gifts.

Remember we are having a game booth at the fair. So make sure you attend and try and win a prize.

Memorials came into the Center in the name of Lillian Hough by Weston and Evelene Koehne; in the name of Laura Denny by Clifford and Irene Smith; in the name of Laura Denny by Grace McLaughlin; in the name of Laura Denny by Bill and Betty Hough; in the name of Ruth Evert by Paul and Charlotte Drago; in the name of Elsie Nelson by Carl and Phyllis Carlson; in the name of Elsie Nelson by Bill and Eileen Males; in the name of Jack Kopikie by Mrs. Charles (Hazel) Belanger, Jr.; in the name of George Frankovic, Sr. by Emery and Mary Barnes; in the name of Elsie Nelson by Emery and Mary Barnes; in the name of Laura Denny by Emery and Mary Barnes; in the name of Fred Gould by Emery

and Mary Barnes; in the name of Charles Brock by Emery and Mary Barnes; in the name of Elsie Nelson by Amanda Carlstrom; in the name of Laura Denny by the Dodge and Island Lakes Property Owners Assoc.; in the name of Laura Denny by Goldie Stephens; in the name of Laura Denny by Bill and Helen Olsen and in the name of Elsie Nelson by Mildred Mattson.

Postage donations to supplement the cost of the Newsletter came from: Mrs. Henry Weber, The Sunshine Handicap Club, Mrs. Jack Quick, Jeanne Mathews, John and Chris Watchorn, Esthro Bonifas, Shirley Johnson and Edith Gray.

Grandma's Artie donations came from: Mrs. Henry Weber, The Sunshine Handicap Club, Mrs. Jack Quick, Jeanne Mathews, John and Chris Watchorn, Esthro Bonifas, Shirley Johnson and Edith Gray.

Large and Minnie Sikorski donated a leg and bag of beans to the Center. Books were given to the Center by Palma Martin and Gerald Swagart brought in egg cartons for our arts and crafts class.

Birthdays were celebrated for: Irene Berger, Evelyn Coffey, Thora Haindl, August 27; Hazel Bolitho, Walter (Lyle) Lambert, Elmer Jettila, Esther Platt, August 28; Mary Blomquist, Shirley Graft, Joe Hursch, Velida Vanderville, Elsie Barry Martha Peterson, August 29; Horace Bosman, Lillian McNamara, Mary Rozicki, Cecil Taylor, August 30; Rachel Adams, Charles Archesy, Maude Robertson, August 31; Fronia McKenzie, Maude Rasmussen, Helen Seymour, September 1; Rueben Larson, September 2.



SURPRISING ETHEL NELSON on her 85th birthday earlier this month were her children who came from as far away as California for the occasion. Pictured here are (back row, left to right) Donald Nelson, Darlene Sangraw, Fred Nelson, Nelie Anderson and Robert Nelson. In front are Edith Tufnell, Ethel Nelson, Eldon Nelson and Phyllis Bendroy.

Nelsons hold surprise party

On Aug. 1, a surprise 85th birthday party was held at the home of Grace and Wally Cook for Ethel Nelson. It was also a family reunion for the Nelson family with 66 guests present.

Those attending from out of town were: Robert Nelson, Crivitz, Wis.; Mr. and Mrs. Fred Nelson, Riverside, Calif.; Eldon Nelson, Palmdale, Calif.; Robert and Nellie Anderson, Hacienda Heights, Calif.; Darlene Sangraw, LaHabra, Calif.; Donald Nelson, daughter and son-in-law Mr. and Mrs. Ray Shunk and family, Mr. and Mrs. Jack and Terri Tennant, Wayne, Mich.; Mr. and Mrs. James and Brian Tufnell, Coloma, Mich.; Mr. and Mrs. Charles Rice, daughter Sue Ellen Wagner and children of San Antonio, Texas; Mr. and Mrs. Stanley Davis, San Antonio.

Debt recovery emphasized by Social Security

recover all overpayments. A person is first asked to repay the entire amount of the overpayment. If this is not possible, arrangements can be made to make the repayment over a period of time, either by withholding a portion of the benefit check or by making monthly installments.

Social Security is also contacting people who failed to report any overpayments as well as those currently incurred. Many offices have set up special units whose purpose is to contact people about the money they owe Social Security.

People can avoid overpayments if they promptly report any event that could affect the amount of money they are due. For people who receive Social Security retirement, survivor or disability benefits, there is a complete list of events to be reported in the "Rights and Responsibilities" booklet they receive in the mail. For people who receive SSI payments, there is a list of events to be reported in the booklet, "What You Have to Know About SSI" which they receive.

Green Thumb helps seniors find work

Green Thumb, Inc., a private, non-profit corporation that helps persons 55 and older of low income in rural areas who want to work.

"We are an employment search and referral firm with a proven track record and over 15 years experience in finding jobs for older workers," according to John Racicot, Michigan Green Thumb State Director. Their experience and consistency make older workers an excellent choice for younger employers. Labor statistics show that older workers generally have a lower rate of absenteeism than their younger counterparts. Their maturity is reflected in their ability to get along well with other employees.

Green Thumb wants to get the word out to the business community that, if an employer is looking for maturity, experience and dependability, they should look into hiring an older worker. Green Thumb maintains an up to date file of screened applicants with a wide variety of qualifications and experience. "We

can be particularly valuable to an employer who is looking for a person to fill part-time and flex-time positions," said Racicot.

Throughout the state, Green Thumb has a qualified staff who can provide employers with the right person for the job at no cost to either the applicant or employer.

For further information, applicants and businesses should call or write to: Michigan Green Thumb, 3480 S. Isabella Rd., Mt. Pleasant, Michigan 48858 (517) 772-5308.

Public Notice

Notice is hereby given to the Fiscal Year 83 Comprehensive Employment and Training Plan (preliminary draft) of the Six-County Consortium for Employment and Training. The source of the requested funds is the 1973 Comprehensive Employment and Training Act as amended in 1978. Counties included in the Consortium are: Alger, Delta, Dickinson, Marquette, Menominee, and Schoolcraft.

The amount of the grant allotment (funds requested) for Fiscal Year 1983 is:

\$1,899,164

The purpose of the CETA program as designed, operated and controlled by the Six-County Consortium for Employment and Training (Region 12) is to provide job training for economically disadvantaged, unemployed and underemployed persons; to assure training and other services leading to maximum employment opportunities and career development; to help give participants the ability to generate future earnings at a level above their present income; and to enhance economic self-sufficiency by establishing a flexible and decentralized system of local programs.

Interested parties may review the complete Fiscal Year 83 grant application in addition to performance companions against the current fiscal year's plan at the Consortium's Escanaba Office between the hours of 8:00 a.m. and 4:30 p.m., Monday-Friday at 2415 First Avenue North, Escanaba, Michigan. Telephone (906) 789-9732. Comments concerning the grant application should be directed to the above address.

- For: • BURNS • NICKS • CUTS
- SCRAPES • SCRATCHES • SCUFFS
- and ABRASIONS...



1. Helps prevent infection three ways.
2. Contains: Bacitracin, Polymyxin, Neomycin.
3. For home and away.
4. For those cuts and scratches that come with summer.
5. Great for kids...does not sting.
6. First aid when you need it.
7. Take it with you when you travel.
8. Great for camp-outs.
9. Soothing first aid ointment.
10. Back-to-school first aid.

10 reasons for first aid with Mycitracin

PUTVIN DRUG STORE
Downtown Manistique
Open 9 to 9 Weekdays
For your Shopping Convenience
341-5494

DELUXE HOMEOWNERS COVERAGE

Start with a "rock-solid" Citizens Insurance Company of America homeowners policy, add in several extended coverages, price it competitively, and back the whole thing with the Citizens track record for fast, fair claim service, and what do you have?

Citizens Deluxe Homeowners Package... coverage designed for the 80's. Call your local Citizens Agent today for all the details.

John Lindroth
SUPERIOR STATE AGENCY
906 341-6907
Manistique, Michigan

ONE OF MICHIGAN'S TOP UNDERWRITERS OF
WORKERS' COMPENSATION

Senior Citizen Activities

Friday, August 27-Blood Pressure Clinic-10:00 a.m.-3:00 p.m.-Bertha Davis, Nurse-Noon Meal-Cards at the Center-1:00-4:00 p.m. (Please line up your own table).

Monday, August 30-Blood Pressure Clinic-11:30 a.m.-1:00 p.m.-Bertha Davis, Nurse-Noon Meal-Bridge-1:00 p.m. (Thelma Brauer will be the Bridge Co-ordinator and anyone who wishes to play can call her at 341-5441).

Tuesday, August 31-Volunteer Sewing-10:00 a.m.-12:00 p.m.-Jerry Sleeper, Aide-Exercise with Suzanne at Suzanne's-10:30-11:30 a.m.-Blood Pressure Clinic-11:30 a.m.-1:00 p.m.-Bertha Davis, Nurse-Noon Meal-Poker-1:00 p.m.-Bingo-1:00 p.m.

Wednesday, September 1-Center Crafts Class-9:30 a.m.-Jerry Sleeper, Aide-Blood Pressure Clinic-11:30 a.m.-1:00 p.m.-Bertha Davis, Nurse-Noon Meal-Senior Citizens Swinger Band and Chorus-1:00-2:30 p.m.-Lorraine Kauppila, Instructor and Tillie Tennant, Pianist.

Thursday, September 2-Noon Meal.

Friday, August 27-Blood Pressure Clinic-10:00 a.m.-3:00 p.m.-Bertha Davis, Nurse-Noon Meal-Cards at the Center-1:00-4:00 p.m. (Please line up your own table).

Monday, August 30-Blood Pressure Clinic-11:30 a.m.-1:00 p.m.-Bertha Davis, Nurse-Noon Meal-Bridge-1:00 p.m. (Thelma Brauer will be the Bridge Co-ordinator and anyone who wishes to play can call her at 341-5441).

Tuesday, August 31-Volunteer Sewing-10:00 a.m.-12:00 p.m.-Jerry Sleeper, Aide-Exercise with Suzanne at Suzanne's-10:30-11:30 a.m.-Blood Pressure Clinic-11:30 a.m.-1:00 p.m.-Bertha Davis, Nurse-Noon Meal-Poker-1:00 p.m.-Bingo-1:00 p.m.

Wednesday, September 1-Center Crafts Class-9:30 a.m.-Jerry Sleeper, Aide-Blood Pressure Clinic-11:30 a.m.-1:00 p.m.-Bertha Davis, Nurse-Noon Meal-Senior Citizens Swinger Band and Chorus-1:00-2:30 p.m.-Lorraine Kauppila, Instructor and Tillie Tennant, Pianist.

Thursday, September 2-Noon Meal.

GERMFASK
Friday, August 27-Potluck-12:00 p.m.-Leathercraft-1:00-4:00 p.m.-Emmet Crown and Grace Brubaker, Volunteer Teachers.

Monday, August 30-Leathercraft Class-9:00 a.m.-12:00 p.m.-Emmet Crown and Grace Brubaker, Volunteer Teachers.

NOTICE OF ANNUAL MEETING
The Upper Peninsula Travel & Recreation Association will hold its annual meeting on the Toonerville Trolley, 300 Junction, Michigan, at 10:30 a.m. Saturday, September 11, 1982. Adjournment will follow the evening banquet at the Falls Hotel, Newberry, Michigan.

MESSIER-BROUILLRE Funeral Homes

211 Arbutus Avenue
Manistique, Michigan 49854
Phone 341-2442

South State Street
Garden, Michigan 49835
Phone 644-2265

Helping you has been our business since 1951

Preneed counseling without obligation

Prenarranged funeral plans

Monuments & Markers

Duplicate markers & inscriptions

R.W. Brouillre, Director R.J. Mercier, Director
B.A. Hassp, Director

New "Thank Goodness it Fits" by Playtex®

lovely new lace trimmed bras designed with an exclusive fitting system that's so unique it has a patent pending! These pretty bras are proportioned especially for Nearly A, Perfectly A and Nearly B cup women.

Here's the bra you've been waiting for-a big bra cut down to size, but a bra specially constructed and sized to meet your needs. Choose from either of our two newest "Thank Goodness it Fits" bras-seamed or seamless-both are made from a shimmering tulle fabric beautifully trimmed with scalloped lace, available in soft cup and lightly lined styles, white or beige-all fabulously feminine.

Special Introductory Prices-\$7.99 soft cup styles, \$8.99 lightly lined styles plus a Money Back Guarantee from Playtex if not satisfied.

Special pricing ends October 18, 1982. Money Back Guarantee offer ends December 25, 1982; see package flap for details.

LAUERMANS of Manistique

Pioneer-Tribune

Classified Page

341-5200

PUBLIC NOTICE

NOTICE OF SALE

In pursuance and by virtue of a Judgment of the Circuit Court for the County of Schoolcraft, State of Michigan, made on the 23rd day of July, 1982, and filed the same day, in a certain cause therein pending, wherein the First National Bank at Manistique, a National Banking Association was Plaintiff, and Milco C. Herro and Diane L. Herro, Husband and Wife, individually, jointly and severally, and Western Auto Supply, Inc., a Foreign Corporation, S.C. Johnson and Son, Inc., a Wisconsin Corporation, The State of Michigan, and the United States of America, were Defendants, notice is hereby given that I shall sell at public sale to the highest bidder, at the front door of the Courthouse in the City of Manistique, State of Michigan (that being the place of holding the Circuit Court for said County), on Friday, the 10th day of September, 1982, at 10:00 o'clock A.M., the following described property, viz:

Part of the Northeast Quarter of the Northeast Quarter of Section 34, Township 42 North, Range 16 West, Hiawatha Township, Schoolcraft County, Michigan, commencing at the Northwest corner of said Northeast Quarter of the Northeast Quarter; thence S 0 degrees - 06' E a distance of 110.0 feet to the point of beginning of parcel herein to be conveyed; thence continuing S 0 degrees - 07' E a distance of 100 feet; thence N 89 degrees - 53' E a distance of 183 feet; thence N 5 degrees - 16' W a distance of 100.4 feet; thence S 89 degrees - 53' W a distance of 174 feet to the point of beginning, contains 0.41 acres of land, more or less.

ALSO:
Lot 15, Sixteen and the North Half of Lot 17, of Block 53 (6) of McCanna Brothers Addition, City of Manistique, according to the plat thereof.

Dated: July 23, 1982

Lena Mae Gilroy, Deputy
Ferdinand Lesion
Schoolcraft County Clerk

PATRICK B. KELLY, P.C.
Attorney for Plaintiffs
209 S. Cedar Street
Manistique, MI 49854
(906) 341-6113

NOTICE OF SALE

In pursuance and by virtue of a Judgment of the Circuit Court for the County of Schoolcraft, State of Michigan, made on the 11th day of June, A.D. 1982, and filed on the 11th day of June, A.D. 1982, in a certain cause therein pending, wherein James W. Parker and Geraldine B. Parker, husband and wife, were plaintiffs, and Charles H. Lockhart and Maurine M. Lockhart, husband and wife, were defendants, notice is hereby given that I shall sell at public sale to the highest bidder, at the front door of the Courthouse in the City of Manistique, State of Michigan (that being the place of holding the Circuit Court for said County), on Wednesday, the 8th day of September, 1982, at 11:00 o'clock in the forenoon, the following described property (or so much thereof as needed to satisfy said Judgment), viz:

Situate in the City of Manistique, County of Schoolcraft, State of Michigan, and more particularly described as follows:

Part of Government Lot One, Section Eighteen, Township Forty-one North, Range Fifteen West; beginning at a point on the South line of Arbutus Avenue extended East One Hundred Sixty-five (165) feet East of the West line of said Government Lot One (1); thence East along said South line of Arbutus Avenue extended East to the Western line of State Trunk Line U.S. 2 as now located; thence Southwesterly along said Westerly right of way to a point intersecting the North line of Garden Avenue extended East; thence West along said North line of Garden Avenue extended East to a point One Hundred Sixty-five (165) feet East of said West lot line; thence North parallel with said West lot line and One Hundred Sixty-five (165) feet East therefrom to the point of beginning.

Dated: July 20, 1982

1/s/ Ferdinand Lesion
County Clerk

HERBERT & WOOD
Attorneys at Law
127 South Cedar Street
Manistique, Michigan 49854
Tel. (906) 341-2107

To the Owner or Owners of any and all Interests in, or Liens upon the Lands herein described:

TAKE NOTICE, that sale has been lawfully made of the following described land for unpaid taxes thereon, and that the undersigned has title thereto under tax deed or deeds issued therefor, and that you are entitled to a reconveyance thereof, at any time within 6 months after return of service of this notice, upon payment to the undersigned or to the Treasurer of the County in which the lands lie, of all sums paid upon such purchase, together with 50 per centum additional thereto, and the fees of the Sheriff for the service or cost of publication of this notice, to be computed as upon personal service of a summons upon commencement of an action, as commencement of suit, and the further sum of five dollars for each description without other additional cost or charges; If payment as aforesaid is not made, the undersigned will institute Proceedings for possession of the land.

State of Michigan, County of Schoolcraft,
East 440 feet of SW 1/4 of NW 1/4, Containing 13.3 acres More or less, Thompson Township

Amount necessary to redeem, \$101.56 plus the fees of the Sheriff, John J. Harper, Route 2 Box 109, Peshigo, Wisconsin.

To William G. Grant, Jr. last grantee in the regular chain title of such lands or of any interest therein as appearing by the records in the office of the Register of Deeds of said County.

HELP WANTED

Office Manager-Secretary, High School diploma required; experience preferred. Duties include bookkeeping, routine administration, typing, filing, general clerical, and the ability to relate to the general public. Please send resume to Schoolcraft Co. Mental Health Clinic, 115 Lake St., Manistique. Deadline Sept. 1.

Shop at Home

To the Owner or Owners of any and all Interests in, or Liens upon the Lands herein described:

TAKE NOTICE, that sale has been lawfully made of the following described land for unpaid taxes thereon, and that the undersigned has title thereto under tax deed or deeds issued therefor, and that you are entitled to a reconveyance thereof, at any time within 6 months after return of service of this notice, upon payment to the undersigned or to the Treasurer of the County in which the lands lie, of all sums paid upon such purchase, together with 50 per centum additional thereto, and the fees of the Sheriff for the service or cost of publication of this notice, to be computed as upon personal service of a summons upon commencement of an action, as commencement of suit, and the further sum of five dollars for each description without other additional cost or charges; If payment as aforesaid is not made, the undersigned will institute Proceedings for possession of the land.

State of Michigan, County of Schoolcraft, Southwest 1/4 of Northeast 1/4, beginning at Northeast corner, thence South forty rods, thence West twenty rods, thence North forty rods, thence East to point of beginning.

Amount necessary to redeem, \$58.31 plus the fees of the Sheriff, Maxine L. Edwards, M98 P.O. Box 55, Gersfask, Michigan 49836. To Caroline Kaufman, 13319 N. Clo Rd., Clo, MI 49820 last grantee in the regular chain title of such lands or of any interest therein as appearing by the records in the office of the Register of Deeds of said County.

To the Owner or Owners of any and all Interests in, or Liens upon the Lands herein described:

TAKE NOTICE, that sale has been lawfully made of the following described land for unpaid taxes thereon, and that the undersigned has title thereto under tax deed or deeds issued therefor, and that you are entitled to a reconveyance thereof, at any time within 6 months after return of service of this notice, upon payment to the undersigned or to the Treasurer of the County in which the lands lie, of all sums paid upon such purchase, together with 50 per centum additional thereto, and the fees of the Sheriff for the service or cost of publication of this notice, to be computed as upon personal service of a summons upon commencement of an action, as commencement of suit, and the further sum of five dollars for each description without other additional cost or charges; If payment as aforesaid is not made, the undersigned will institute Proceedings for possession of the land.

State of Michigan, County of Schoolcraft, Southwest 1/4 of Northeast 1/4, beginning at Northeast corner, thence South forty rods, thence West twenty rods, thence North forty rods, thence East to point of beginning.

Amount necessary to redeem, \$58.31 plus the fees of the Sheriff, Maxine L. Edwards, M98 P.O. Box 55, Gersfask, Michigan 49836. To Jeanette Tamlyn, 847 S. Main, River Terrace Motel, Chubbogon, MI 49721 last grantee in the regular chain title of such lands or of any interest therein as appearing by the records in the office of the Register of Deeds of said County.

To the Owner or Owners of any and all Interests in, or Liens upon the Lands herein described:

TAKE NOTICE, that sale has been lawfully made of the following described land for unpaid taxes thereon, and that the undersigned has title thereto under tax deed or deeds issued therefor, and that you are entitled to a reconveyance thereof, at any time within 6 months after return of service of this notice, upon payment to the undersigned or to the Treasurer of the County in which the lands lie, of all sums paid upon such purchase, together with 50 per centum additional thereto, and the fees of the Sheriff for the service or cost of publication of this notice, to be computed as upon personal service of a summons upon commencement of an action, as commencement of suit, and the further sum of five dollars for each description without other additional cost or charges; If payment as aforesaid is not made, the undersigned will institute Proceedings for possession of the land.

State of Michigan, County of Schoolcraft, Southwest 1/4 of Northeast 1/4, beginning at Northeast corner, thence South forty rods, thence West twenty rods, thence North forty rods, thence East to point of beginning.

Amount necessary to redeem, \$58.31 plus the fees of the Sheriff, Maxine L. Edwards, M98 P.O. Box 55, Gersfask, Michigan 49836. To Jeanette Tamlyn, 847 S. Main, River Terrace Motel, Chubbogon, MI 49721 last grantee in the regular chain title of such lands or of any interest therein as appearing by the records in the office of the Register of Deeds of said County.

To the Owner or Owners of any and all Interests in, or Liens upon the Lands herein described:

TAKE NOTICE, that sale has been lawfully made of the following described land for unpaid taxes thereon, and that the undersigned has title thereto under tax deed or deeds issued therefor, and that you are entitled to a reconveyance thereof, at any time within 6 months after return of service of this notice, upon payment to the undersigned or to the Treasurer of the County in which the lands lie, of all sums paid upon such purchase, together with 50 per centum additional thereto, and the fees of the Sheriff for the service or cost of publication of this notice, to be computed as upon personal service of a summons upon commencement of an action, as commencement of suit, and the further sum of five dollars for each description without other additional cost or charges; If payment as aforesaid is not made, the undersigned will institute Proceedings for possession of the land.

State of Michigan, County of Schoolcraft, East 1/2 of NW 1/4 of SE 1/4 of NW 1/4 Section 24 Containing 10 acres more or less, Town 43 North, Range 13 West, Mueller Township.

Amount necessary to redeem, \$66.38 plus the fees of the Sheriff, John J. Harper, Route 2, Box 109, Peshigo, Wisconsin, 54157. To Marianne Stretzy last grantee in the regular chain title of such lands or of any interest therein as appearing by the records in the office of the Register of Deeds of said County.

SWITCH TO THE "AUTO-MIZER"

The "auto-mizer" is great low cost auto insurance from Frankenum Mutual. You get more mileage from your insurance premium, more complete protection for your car, and a smarter, better answer to saving or overall auto costs. Stop by soon. Ask for quote. Low cost "auto-mizer" insurance is a great reason to switch to Frankenum Mutual.

The Robert Orr Agency
217 S. Cedar
Manistique, Michigan 49854
341-2256

Pioneer-Tribune

OFFERED BY

Century 21

Each office independently owned and operated

TOP O' LAKE REALTY

341-6191

MANISTIQUE RADIO CENTER

"Since 1946" TV - Radio - Stereo
RCA - Quasar Sales & Service
Records & Tapes

Westside
(906) 341-5851
315 West St.
Manistique, MI 49854

HELP

By Reporting Children in danger from ABUSE-NEGLECT

24 Hour On Call Social Worker for Schoolcraft & Alger Co. Childrens Protective Services Dept. of Social Services

Call collect 341-6550 Manistique

HIAWATHA REAL ESTATE

Featuring this week . . .

GULLIVER LAKE: 3 bedroom year around home on large secluded lot with 150 ft. of beautiful sand beach. Has fireplace, 2-car garage and is priced at \$45,000.

2 BEDROOM HOME WITH 20 ACRES: Has garage, and new 30x70 ft. steel bldg. Located on black-top rd. East of Gulliver. Property is partially wooded and home is partially furnished. \$24,900.

10.2 ACRES: Mixture of timber, very private area. Ideal cabin location for week-end retreat. Private access to Lake Michigan. \$4,000 with L.C. terms available.

INDIAN LAKE: 3 bedroom chalet style home with western pine interior. Lg. living room with brick fireplace, family room with free standing wood burning stove, 1 1/2 baths, utility room, attached 24x26 ft. garage, wood deck. Nicely wooded lot with 100 ft. frontage. Also inc. are two back lots. \$49,500.

19.5 ACRES: Partially wooded, located on county rd. with electricity. \$9,500 with L.C. terms available.

VACATION OR HUNTING RETREAT: This approx. 27 acres has a 24x24 ft. garage with a 16x16 ft. addition that is finished & carpeted. Located 1 mile East of M-94 on year around road. This property is near good fishing lakes & is adjacent to state land. Location is suitable for year around home. Let us show you this one for \$22,500.

4 YR. OLD RANCH STYLE HOME: 3 bdrms, 1-3/4 baths, lg. living & dining area, nice kitchen with stove & refrig., inc. full basement with utility room. Fully insulated with wood and electric heat. 2-car heated & insulated garage, all situated on 6 acres, 5 miles from Mstq. \$59,500.

We have Lake Michigan lots, farms, small and large parcels, river frontages, lake lots, businesses and commercial property. Contact us for all your real estate needs....

Office Hours
Monday-Friday 10-5
Saturday 10-3
Anytime by Appointment

Phone (906) 341-6590
P.O. Box 157 - U.S. 2
Thompson, MI 49889

Sales Associates
Peggy Arnold 341-6617
Dick Steffens 341-6482
Jeff Basee 341-6819

STATE WIDE REAL ESTATE

MANISTIQUE

Marvin J. Grover, CRS, Associate Broker	341-2260
Carl E. Wegner	341-6059
Harvey P. Fyke	341-6672
Robert Kanerva	341-2258
Marie D. Grover, CRS, Associate Broker	341-2260
Vicki L. Fyke	341-6672
John W. Stapleton	341-6134

East U.S. 2
341-2131

#2393 19.5 ACRE COUNTRY ESTATE with a 3 bedroom home and an unattached 2-car garage. Home has a fireplace and large family room. There is a large garden spot and timber to cut your own firewood. There are about 40 apple trees on the property and one sour cherry tree that produces about 20 quarts a year. \$31,500.

#2390 3 BEDROOM RURAL HOME on 4 acres, very well maintained and not too far from town. Has a horse barn and two other buildings that could be used for storage. \$37,900.

#2095 LITTLE THINGS MEAN A LOT, but nothing is little about this 3 bedroom home in Lapeer addition. A spacious kitchen along with the living room, dining room, and family room give the feeling of open spaces. This home must be inspected for only \$36,000.

#2444 RURAL 4 BEDROOM exceptionally well built, 1794 sq/ft. Ranch home on wooded 4 acre lot west of town. Full basement, one and 3/4 baths, 22x15 living room with fireplace, 22x17 combination kitchen and dining room, 700 sq/ft. attached 2-car garage. Exterior siding needed. Owner says sell! \$48,000; 12 percent mortgage available for qualified buyer with 10 percent down.

#2454 9.5 ACRES with 331' frontage on Dawson Road. Approximately 3/4 mile from Indian Lake access. Wooded with mostly all hardwoods.

#2408 INDIAN LAKE access in your front yard as this never ranch home is situated on a gentle knoll overlooking the lake. Has dock in that is included in price. NEARLY MAINTENANCE FREE. 2 car garage, brick and stone fireplace. All appliances, drapes included. One of the neatest packages around all for \$42,500.

#2443 200 ACRE FARM! 3/4 miles of county road 438 frontage with depth of 1/2 mile on the 80 acre parcel. Has a comfortable 1 story home with full basement, 2nd 2 bedrooms and EZ to heat with wood and has electric heat if you'd prefer. There is a small barn (dunnet style) and a 3 stall garage that has an area perfect for a workshop (60x21). The buildings are in good repair. Approx. 60 acres are tillable. Some nice woods on property. Farm has apple trees, raspberries as well as strawberries. This whole package is located in a quiet rural area that is pretty as a picture! You'll like the property and the price. Only \$51,000 for all buildings and 80 acres and the balance of 120 acres available on a Land Contract with 9 PERCENT INTEREST!!!

#2235 LOT WITH LILLY LAKE ACCESS, heavily wooded with beech and maple trees. Electric and phone available. Would be excellent for hunting camp or home. Price \$2,500.

#2461 39 ACRES--good two-track access from US-2. Hunting acreage and wooded \$9,900 with \$4,000 down at 11 percent interest. \$108.71 per month.

After hours call: 131 S. Cedar Street Manistique, Michigan 49854 (906) 341-6191

John Mintooff 341-6747
Gordon Fox 644-2898
John Yaris 341-8259
George Maciejewski 644-2074
Robert Grunch 341-8044

Just a sample of our listings!

Recent Price Reductions

#1247 RANCH STYLE HOME located on the Indian River two miles from Manistique. This home is in very good condition. Beautiful setting, large pine trees, access to Indian Lake by River. Priced at \$45,900 cash.

#1183 SPACIOUS OLDER HOME with five bedrooms located in the Village of Garden. Structurally sound, large lot, insulated, near stores and churches. Priced at \$14,500 cash. \$15,500 L.C.

#1287 OLDER FOUR BEDROOM HOME with remodeled interior located in the Cooks area, large kitchen with new sink and cupboards--rolling 40 acre site with small stream and potential for pond. Priced at \$23,500 terms.

#1299 OLDER FOUR BEDROOM HOME on West Elk Street. 1 1/2 story with large rooms, full basement, gas warm air heat. New roof and some electrical and plumbing in 1979. Priced at \$19,500 with owner financing to qualified buyer.

#1149 OLDER HOME IN GARDEN with rental unit attached. Home is nicely remodeled. Rental unit needs to be renovated. Two garages. Situated on a large corner lot. \$21,000 with terms.

A Sample of Our Many New Listings

#1326 300 FEET OF SMITH LAKE FRONTAGE, wooded with good access, power and phone available. Priced at \$15,000 with owner financing available.

#1317 A GOOD HOME FOR SOMEONE WHO WANTS TO BE OUT OF TOWN AND HAVE LOTS OF GARAGE SPACE TO WORK IN--two bedrooms, aluminum siding, new new carpeting, new kitchen sink and countertop, approx. one acre of land on Towline Road. Priced at \$14,000 cash.

#1320 LAKESIDE AREA. Small two bedroom home with gas heat and is very well insulated. Priced at \$9,000.

#1329 THREE BEDROOM HOME WITH ONE BEDROOM APARTMENT located at 123 Arbutus Avenue, close to downtown shopping, priced at \$12,500 cash.

#1327 40 ACRES LOCATED 3 1/2 MILES SOUTH OF FAYETTE STATE PARK PICNIC AREA. All high property, mostly small hardwoods, frontage on two county roads. Priced at \$6,500 with owner financing available. Will sell as two 20's for \$4,000 each.

#1325 2-10 ACRE PARCELS IN ISABELLA. An excellent location for your home or cabin. Front half of lots cleared. Back half wooded. Mostly hardwoods. Priced at \$4,900 each or \$8,000 for both, terms available.

WE ARE LISTING PROPERTIES ON A CONTINUING BASIS.. CALL OUR OFFICE..T-O-D-A-Y!!

Just a sample of our many properties we have for sale. Call or stop in to discuss your real estate needs. JOHN MINCOFF, BROKER G.R.I. 24 hour answering service...at 341-6191

DOUBLE MANUFACTURERS' COUPONS

... The  meat market

STEAK SALE

RED OWL INSURED

BEEF T-BONE STEAK

LB. **\$2.99**



BEEF SIRLOIN STEAK

LB. **\$2.69**



FRESH, TENDER

SLICED BEEF LIVER

LB. **69¢**



RED OWL INSURED

BONELESS BEEF STEW

LB. **\$1.99**



4 TO 6 LB. AVERAGE

ARMOUR STAR BONELESS HAM

LB. **\$1.99**



U.S. Choice

Porterhouse steak

Canadian Bacon

\$1.99 lb.

This Week With The Coupons Below

RED OWL DOUBLE COUPON

Present this coupon along with any one manufacturers' "cents off" coupon (up to 50¢) and get double the savings when you purchase the item. (excluding free items, tobacco and dairy products) Limit one double coupon per manufacturers' coupon, and limit 4 double coupons per customer. Coupon effective August 22 thru August 28, 1982.

RED OWL DOUBLE COUPON

Present this coupon along with any one manufacturers' "cents off" coupon (up to 50¢) and get double the savings when you purchase the item. (excluding free items, tobacco and dairy products) Limit one double coupon per manufacturers' coupon, and limit 4 double coupons per customer. Coupon effective August 22 thru August 28, 1982.

RED OWL DOUBLE COUPON

Present this coupon along with any one manufacturers' "cents off" coupon (up to 50¢) and get double the savings when you purchase the item. (excluding free items, tobacco and dairy products) Limit one double coupon per manufacturers' coupon, and limit 4 double coupons per customer. Coupon effective August 22 thru August 28, 1982.

RED OWL DOUBLE COUPON

Present this coupon along with any one manufacturers' "cents off" coupon (up to 50¢) and get double the savings when you purchase the item. (excluding free items, tobacco and dairy products) Limit one double coupon per manufacturers' coupon, and limit 4 double coupons per customer. Coupon effective August 22 thru August 28, 1982.

<p>CORN OIL QUARTERS</p> <p>FLIECHSMANN'S MARGARINE</p> <p>1 LB. CTN. 69¢</p> <p>WITH COUPON BELOW</p>	<p>APPLE, RHUBARB OR DUTCH APPLE</p> <p>CHEF PIERRE PIES</p> <p>37 TO 38 OZ. PKGS. \$1.89</p> <p>WITH COUPON BELOW</p>	<p>WHITE OR ASSORTED</p> <p>CERTAIN BATH TISSUE</p> <p>4 ROLL PKG. 98¢</p> <p>WITH COUPON BELOW</p>	<p>ZINGER COUPON SPECIAL</p> <p>ROSE</p> <p>VALDOR LEMONADE</p> <p>12 OZ. CAN. 9¢</p> <p>WITH COUPON BELOW</p>
----------------------------------------------------------------------------------------------------------------------	--------------------------------------------------------------------------------------------------------------------------------------	-------------------------------------------------------------------------------------------------------------------	-------------------------------------------------------------------------------------------------------------------------------------

GOLDEN GRIDDLE Syrup 24 OZ. BTL. **\$1.49**

RED OWL SMOKED Sliced Meats 2 1/2 OZ. PKG. **49¢**

VAN DE KAMP'S, LIGHT 'N CRISPY Fish Filets 14 OZ. PKG. **\$1.89**

OSCAR MAYER ROUND, BEEF, SQUARE Sliced Variety Pack 12 OZ. PKG. **\$1.79**

MORRELL, BY THE PIECE Braunschweiger LB. **79¢**

VAN DE KAMP'S, LIGHT 'N CRISPY Fish Sticks 13 1/2 OZ. PKG. **\$1.79**

8" WHITE Paper Plates 100 CT. PKG. **89¢**

OREIDA Tater Tots 4 LB. **\$1.99**

The  savings market

SHOP & SAVE

CREAMY OR SUPER CHLUNK **Skippy PEANUT BUTTER** 18 OZ. JAR **\$1.49**

VALDOR, GRADE "A" **Large Eggs** DOZEN **49¢**

SAVE AT OUR DELI

1/2 Bar-B-Que'd Chicken Chicken **1.39 each**

Fabulous Fish Dinner **1.49 each**
2 pieces of fish, 2 taters
Coleslaw & Roll

Del Boiled Ham **2.19 lb.**

The  produce market

Wisconsin No. 1 White **POTATOES** 10 LB. BAG **99¢**

THOMPSON, GREEN **SEEDLESS GRAPES** LB. **79¢**

HOMEROWN SQUASH **25¢**

SNO WHITE MUSHROOMS **89¢**

California Peaches **49¢ lb.**

Sunkist Lemons 79¢

Green Peppers 4 for 1

YOUR CHOICE, LAYER SIZE

Duncan Hines Cake Mixes

75¢

BUSH'S FAMOUS **Baked Beans** 28 OZ. CAN. **69¢**

REGULAR OR EXTRA BODY


REVLON FLEX SHAMPOO OR CONDITIONER

16 OZ. SIZE **\$1.89**

15¢ OFF LABEL

AQUA-FRESH TOOTH PASTE 4.6 OZ. TUBE **99¢**

PRICES EFFECTIVE THRU SATURDAY, AUG. 28, 1982. QUANTITY RIGHTS RESERVED. NO SALES TO DEALERS.

RED OWL FRIENDLY FOOD STORES 

FRESH BAKERY BUYS

FRESH BAKED **WHEAT BREAD** 1 LB. LOAF **79¢**

FRESH BAKED Honey Wheat Donuts **12 FOR 99¢**

FRESH BAKED Iced Long Johns 6 FOR **\$1.39**

225 VALDOR, GRADE "A" **LARGE EGGS** DOZEN **49¢**

Limit one doz. with coupon. Limit one coupon per family. Valid thru Sat., Aug. 28, 1982. (AAXX0082) I. R. Red Owl

226 CHOICE OF GRINDS **FOLGER'S COFFEE** 3 LB. CAN. **\$5.99**

Limit one with coupon. Limit one coupon per family. Valid thru Sat., Aug. 28, 1982. (AAXX0082) I. R. Red Owl

220 QUARTERS, FLEISCHMANN'S CORN OIL **MARGARINE** 1 LB. CTN. **69¢**

Limit one with coupon. Limit one coupon per family. Valid thru Sat., Aug. 28, 1982. (AAXX0082) I. R. Red Owl

221 certain **BATH TISSUE** 4 ROLL PKG. **98¢**

Limit one with coupon. Limit one coupon per family. Valid thru Sat., Aug. 28, 1982. (AAXX0082) I. R. Red Owl

223 APPLE, RHUBARB OR DUTCH APPLE **CHEF PIERRE PIES** 37 TO 38 OZ. PKGS. **\$1.89**

Limit one with coupon. Limit one coupon per family. Valid thru Sat., Aug. 28, 1982. (AAXX0082) I. R. Red Owl

224 VALDOR, FROZEN **LEMONADE** 12 OZ. CAN. **9¢**

With coupon for equivalent 10¢ must meet factoring requirement. Limit one with coupon. Limit one coupon per family. Valid thru Sat., Aug. 28, 1982. (AAXX0082) I. R. Red Owl

OLLIE'S