

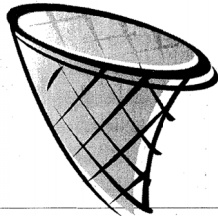
Pioneer Tribune



Volume 141 No. 41 2 sections, 12 pages

Thursday, December 26, 2019

\$1.25



**Emeralds,
Black Bears
hit the courts**

Page B1



**Rounding out
the top stories
of the year**

See Below



Quick facts

- Three people – two Manistique residents and one Rapid River resident – were arrested and charged last week for drug related charges.

Three arrested, charged for drugs

Cocaine, meth allegedly found in Pearl Street bust

MANISTIQUE – Two residents of Manistique and one resident of Rapid River have been arrested and charged with drug-related offenses after a local bust last week.

According to a press release from the Manistique Public Safety Department, MPSD officers, including the MPSD K-9 Unit, and Schoolcraft County Sheriff's Department served a search warrant at 209 Pearl Street at approximately 4:30 p.m. Dec. 18. The warrant resulted in the seizure of methamphetamine, other narcotics, and the arrest of three adults.

The arrested adults were immediately lodged at the Schoolcraft County Jail and two children found in the home, ages one and 10, were taken into protective custody and turned over to the Michigan Department of Child Protective Services. Those arrested appeared in the 93rd District Court Dec. 20 for arraignment.

Zachary James Siewert, 27, of Rapid River, Mich., was charged with: one count of controlled substance – delivery on school or library property (narcotics or cocaine) less than 50 grams, a felony punishable by two to 60 years in prison and an up to \$75,000 fine; and one count of controlled substance delivery/manufacture – methamphetamine, a felony punishable by

Drug bust continued on A7

Events

December 27 – Girl Code: The Trifecta, The Grind Coffeehouse, 10 a.m.-4 p.m.

January 3,4,5 – Open Skate, Little Bear West Arena, Friday and Saturday 6-9 p.m., Sunday 5-8 p.m.

January 15-16 – Learn to Cook with 4-H for grades fifth through 12th, Manistique Middle and High School home economics classroom, 12-3 p.m.

January 25 – Lantern Lit Ski/Snowshoe/Hike, Fayette Historic State Park, 6 p.m.

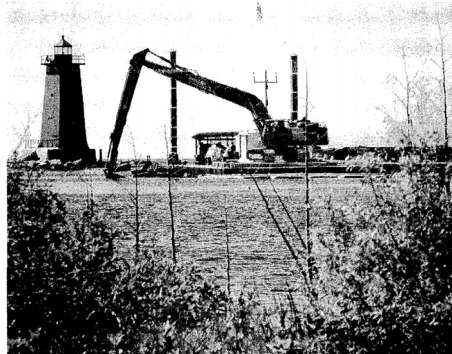
January 25 – Family Fun Night "The Snowman is Melting" Escape Room, Erickson Center for the Arts in Curtis, 4-6 p.m.

February 29 – CBC Fundraiser Basketball Tournament, Manistique Middle and High School and Emerald Elementary

Top 10 stories of 2019

10 A decades-long endeavor came to an end this summer. The dredging project aimed at delisting the Manistique River Area of Concern was a multi-agency project involving the Environmental Protection Agency, National Oceanic and Atmospheric Administration, Michigan Department of Environment, Great Lakes, and Energy, U.S. Geologic Survey, and U.S. Army Corps of Engineers. The goal of the project, which began in the late 1990s, has been to de-list the Manistique River as an Area of Concern by removing contaminated sediment from the river's bottom. The Manistique River has been listed as an Environmental Protection Agency "Area of Concern" since 1987, due to repeated contamination from PCBs (polychlorinated biphenyl), oils, and combined sewer overflows. PCBs belong to a family of manmade organic chemicals known as chlorinated hydrocarbons, and were the result of a past process performed by the former Manistique Papers, Inc., which used solvents to "de-ink" paper. These solvents leached PCBs into a lagoon on its property, and, eventually, into the river. The removal of the contaminated material equated to 42,500 cubic yards of about 2,000 truckloads.

Approximately \$20 million has been invested by the federal government since beginning the Manistique AOC delisting process. Two impairments remain in the Manistique River – restrictions on fish consumption and restrictions on dredging activities. While the current dredge project is designed to correct both these impairments, EGLE officials say it is anticipated to be a few years before "fish tissue concentrations" are in line with Little Bay de Noc, which is the "comparison site".



A decades-long dredging in the Manistique harbor wrapped up this year.

7 The Manistique City Council will look a little different in January, when the newly-elected members will take their seats. In November, city residents elected three members to the Manistique City Council from the following candidates: Ken Blowers; Joan Ecclesine; Martha Johnson; Aimee Lunsford; Kimberly Shiner (incumbent); Isaac R. Swisher; and Paul Walker (incumbent). With 340 votes, Ecclesine secured her seat on council, while Johnson secured the second open seat with 318 votes. Incumbent Shiner held on to her position in city council, bringing in a total of 220 votes and securing the third and final vacancy. Walker missed out on his opportunity to continue serving on council, bringing in 194 votes – just 26 votes behind Shiner. The terms of current city council members Paul Walker, Kimberly Shiner, and Maria Broullire expire Dec. 31. Current mayor, Mike Periloux, and councilperson Catherine Rohde are serving terms which expire Dec. 31, 2021.

6 The city of Manistique is seeking a combination of grant and loan funds to cover the cost of a more than \$1 million emergency infrastructure repair. The repair was the result of a sewer pipe failure and subsequent sinkhole in U.S. Highway 2 near Trader's Point Drive Sept. 23 and 24. Once crews were mobilized and on site, a bypass system for the sewer infrastructure, consisting of more than 4,000 feet of hose and pipe and multiple pumps, was put into place. Since that time, the failed sewer pipe has been abandoned and a new pipe installed. The city is currently seeking loan and grant funding from the USDA Rural Development to cover the cost of the repair, which is estimated to be just over \$1 million.

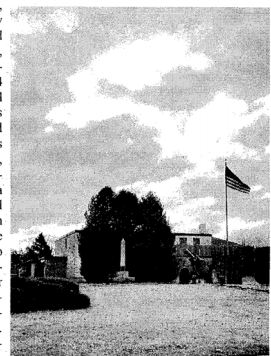


Top 10 of 2019 continued on A8

Crews spent the end of September and beginning of October repairing a sinkhole that formed on U.S. 2

9 High winds and water levels wreaked havoc on the area's shoreline this summer. A section of the Manistique Boardwalk washed away following high winds and water levels in late July. Additional high-water level damage was caused to the boardwalk in September and October. Among the areas negatively affected by the storm were the boardwalk, the Thompson historical marker site, Roer's Roadside Park, and the Mackinaw Trail Winery. Some areas of the boardwalk affected fall under the jurisdiction of the Michigan Department of Environment, Great Lakes, and Energy and the U.S. Army Corps of Engineers. Manistique City Manager Sheila Aldrich said multiple points along the boardwalk will need to be reinforced, as they are affected by the high-water levels of Lake Michigan. The city is exploring possible grant opportunities to complete this reinforcement.

8 Since a millage for the renovation of the former armory building for use of jail was denied by voters last year, the Schoolcraft County Board of Commissioners' Jail Committee has been exploring alternative options for its dilapidated facility. During a meeting in November, the committee proposed a 2.5-mill millage for jail construction on the front lawn of the current jail. This millage that would bring in roughly \$922,654 a year. Based on the 3 percent interest rate currently offered by USDA Rural Development, the county could afford an approximately \$12 million jail replacement project cost. The total yearly payment for a 20-year loan, plus contingency payment required by USDA RD, would be approximately \$887,304 a year. Financial information has been submitted to the county's architectural firm, which is expected to produce a conceptual jail design based on those figures. The committee is also expected to pursue a five-year companion millage for the operation of the jail. The millage is expected to appear on the August 2020 ballot.



The county is currently looking to build a new jail in front of the existing facility.



Courtesy photos

3-Day Forecast

| FRIDAY | SATURDAY | SUNDAY |
|--------|----------|--------|
| | | |
| 36/26 | 34/26 | 33/25 |

Inside

| | |
|----------------|------------|
| Classifieds | B3 |
| Community | A4, A7, A8 |
| Lifestyles | A5, A6 |
| News and Views | A2, A3 |
| Outdoors | B2 |
| Sports | B1, B4 |

Hello,
Ed McNeil
Thanks for reading!

Follow us to receive updates, view photos, and more

Share a story or photo!
Submit it here:
www.pioneertribune.com

Want more photos?
mstqioneertribune.smugmug.com

Red Cross: Holidays increase home fire risk

DETROIT — The Michigan Region of the American Red Cross is actively reminding Michiganders to be especially aware of fire threats that may be present during the Holiday Season. Most disasters the Red Cross responds to are fire-related and home fires are the nation's biggest disaster threat; sadly, taking an average of seven lives each day.

Christmas and New Year's are the top days for home candle fires in the U.S.—where an average of 23 candle fires are reported every day. Please consider using battery-operated candles to help keep your family safe.

This year, a Red Cross survey showed that nearly one in three people have left the room or fallen asleep while burning candles. Understandably, people lead busy lives—which makes flameless candles a safer option.

If you must use candles, never leave them unattended, keep them away from anything that could burn, placing them out of reach from pets and children.

Heating equipment is a leading cause of home fires; a risk that increases with this month's cold weather. Help keep your family safe by providing at least three feet of space for all heating equipment.

The recent Red Cross survey showed more than half of U.S. adults have used a space heater at home. This equipment is so common that it's involved in roughly two of every five home heating fires.

If you must use a space heater, place it on a level, hard and non-

flammable surface, such as a ceramic tile floor. Don't place it on rugs and carpets, or near bedding and drapes, being certain to turn it off every time you leave the room or go to sleep.

Fire experts agree that people may have as little as two minutes to escape a burning home before it's too late. Create a home fire escape plan with your household and practice it until everyone can escape in less than two minutes.

Escape plans should include at least two ways to escape from every room in your home.

Select a meeting spot at a safe distance away from your home, such as your neighbor's home or landmark like a specific tree in your front yard, where everyone knows to meet.

Working smoke alarms cut the risk of dying in a home fire in half. Install smoke alarms on every level of your home and check them monthly.

Make sure smoke alarms are inside and outside bedrooms and sleeping areas.

Test your smoke alarms once a month and change the batteries at least once a year, if your model requires it.

Working smoke alarms in a home cut the risk of death by half and having an escape plan further improves the odds of survival. Michigan residents in need of smoke alarms and those wanting a viable home safety plan, specifically tailored to your family's unique needs, can receive both at no cost through their local Red Cross and the organization's

Home Fire Campaign.

Tragically, seven people die in home fires each day, most in homes that lack working smoke alarms. The enormity of this loss of life and the commonplace nature of home fires is why the Red Cross campaign began and continues to strive to reduce home fire deaths and injuries. The effort is credited with having saved six Michigan lives since 2014 and 682 lives nationwide thus far.

A critical part of the campaign is Sound the Alarm, a series of home fire safety and smoke alarm installation events held in at-risk communities across the country. Red Cross volunteers, along with fire departments and other partners, canvass high-risk neighborhoods, installing free smoke alarms, replacing batteries in existing alarms and helping families create escape plans.

Michigan's 2020 Sound the Alarm events are slated to take place across the state beginning in April, with a rally and legislative event kicking things off in Lansing on the Capital steps April 16.

About the American Red Cross

The Red Cross shelters and provides emotional support to victims of disasters; supplies about 40 percent of the nation's blood; teaches skills that save lives; provides international humanitarian aid; and supports military members and their families. The Red Cross is a not-for-profit organization that depends on volunteers and the generosity of the American public to perform its mission.

Flashback

That's one TALL stocking



Pioneer Tribune Archive photo from the Jan. 3, 1965 edition of the Pioneer Tribune. Dan Savoie, right, was the winner of the eight-foot stocking given away by Bill and Nance McDermott of the Eat Shop this holiday season. Sunday stocking winners were Brad Beckman, Joy Eastman, and Kristy Brzezinski. They were selected from approximately 1,100 entries.

The Archives

This week in the Pioneer Tribune

50 years ago

December 25, 1969

Schoolcraft County led the Upper Peninsula with dubious distinction of showing the greatest decrease in school census figures for students 0-19 during the past five years. Figures compiled by Don S. Brumbaugh of Norway, head of the study center for Region I of the Michigan Association of School Administrators, showed that Schoolcraft County showed a decline of 15.71 percent in the 0-19 age bracket since 1965. Iron County with a drop of 14.16 percent was the second highest. Only two of the counties in the state had an increase—Baraga, with 7.78 percent, and Delta, 1.8 percent. The studies showed that in the pre-school group, ages 0-4 the census fell 19.68 percent for the entire U.P. during that five year period or almost four percent per year.

Local and State Police are investigating a fire at the Central School building last Friday afternoon. The blaze was confined to a roll of paper stored by the north entrance of the Junior High School section of the building. It was contained rapidly, but considerable smoke resulted and the building was evacuated for about five minutes. The possibility of arson is being checked by officers and school officials. Public Safety firemen responded to the alarm at 1:20 p.m.,

but were only at the scene for a few minutes. Firemen were also called by Mrs. Leo McNamara to the Star Motel, East Lakeshore drive, Thursday at 11:18 a.m., when the exhaust hood on the kitchen stove ignited. Some smoke damage to cabinets, and burned wiring, was reported.

A Manistique man was among 49 new Michigan State Police troopers taking the oath of office at graduation ceremonies of the 76th recruit school held last Wednesday in the Lansing National Guard Armory. Col. Frederick E. Davids, department commander, adj. U.P. presented the oath and presented badges. Francis R. Weber, son of Mr. and Mrs. Vincent F. Weber of 711 Arbutus Avenue, has been assigned to the Rockford post, effective Monday, Dec. 29.

Snowmobile operators are reminded that the entire Seney National Wildlife Refuge is off limits to all snowmobile or trail-bike travel. Violators will be prosecuted under Federal trespass regulations. The Bureau of Sport Fisheries and Wildlife of the Department of the Interior is presently conducting studies on two Minnesota National Wildlife Refuges which have snowmobile trails. Until the results of these studies are evaluated, no snowmobile use will be permitted on any wildlife refuge in this region.

35 years ago

December 27, 1984

Already skating on thin financial ice because of changes in Medicare payments, Schoolcraft Memorial Hospital trustees were told of impending problems that will be caused when Medicaid also switches to a new payment system Feb. 1. Administrator David Jahn reported that Medicaid will begin payment on a Diagnostic Related Groups (DRG) system next year, and that reimbursement to the hospital will be low for the first year at least. DRG establishes criteria that patients must meet before they can be admitted to the hospital and also set the amount that can be charged for tests, medical treatment or surgery.

The City of Manistique's improved financial situation has made it possible for the city to donate money to help support the Manistique School and Public Library for the first time in 82 years. Presenting a \$1,000 check to Supt. Richard Bouffas were Mayor

David Vaughan and City Manager Charles Varnum. In a close contest, a team from Norway High school emerged victorious over Big Bay de Noc High 165-130, on the Upper Peninsula High School Bowl Dec. 15, aired by WNMU-TV, Northern Michigan University's public television station. Appearing for Norway were Steve Grenier, Cindy Brown, Steve Kane and Jill Smith, with alternates Zach Thomson and Jeff deacon, with coach Don Byczek. Representing Big bay de Noc were Brad McPhee, Theresa Collins, Wayne Fields and Tim Fox, with alternates Paul Carley and Amy Tarrow, and coach George Babladelis.

Circuit Judge William Hood administered the oath of office to these Schoolcraft County officials this week. County Clerk Sigrid Doyle, County Treasurer Bert Vail, Prosecutor Peter Hollenbeck and Sheriff Lloyd Gray.

20 years ago

December 30, 1999

Just eight months after getting underway, officials with Schoolcraft County's "Save a Life Fund" have announced their fundraising campaign has reached its goal. The drive was a cooperative effort between local law enforcement and emergency services personnel, to raise money for the purchase of several new Heart-Start portable defibrillator units and an Argus Thermal Imaging Camera—a device which allows firefighters to see inside dark and smoke filled buildings. Fundraising activities began in early April. They officially concluded Dec. 21, with the presentation of a \$5,897

check from Manistique Charities of Manistique Papers, Inc., to the "Save a Life" chairman, Manistique Public Safety Director David Peterson.

The Manistique Michigan State Police Post recently received a new officer. Mark Giannunzio, 23, newly graduated from the 118th Michigan State Police Trooper Recruit School, is a native of Vulture, Mich. He graduated in 1995 from Norway High School and attended Lakeland College in Wisconsin and Northern Michigan University. While at the academy, Giannunzio was trained in firearms, defensive tactics, Michigan law, motor vehicle code and water safety.

10 years ago

December 31, 2009

"All we want to do is clean up the county one ton at a time." According to Manager Charlie Frenette, that's the mission of B&C Recycling, the new scrap iron and metal recycling center that opened several weeks ago in Germia Township. Located on 10 acres along M-77, four miles north of Blaney Park, the business accepts a lengthy list of scrap metal items, from copper to brass, aluminum, tin, lead, zinc, steel and iron. Car parts, including radiators and batteries are also accepted, and very soon the center will begin taking the cars themselves.

Beginning next week, an interim administrator will be in place at the Schoolcraft Medical Care Facility, and board members hope to hire a full time administrator soon after. The changes are taking place following the recent resignation of Administrator Ruth MacAlpine, who is leaving after nearly seven years to accept a position downstate. According to Dixie Anderson, chair of the Schoolcraft County Department of Human Services-Medical Care Facility Board, Joe Coleman of Interlochen has been hired to oversee the day to day operations at the MCF on an interim basis. He will step into the job on Monday, Jan. 4.



Stay Exceptional

The Emerald Elementary Exceptional Explores for the week of Dec 13 were: Gradin Faketty, Elliot Goudreau, Ayonna Swisher, Kambriah Lindblad, Sophia McCarty, and Kaylynn McDougale.



Contact the Editor

Mail:
Manistique Pioneer Tribune
212 Walnut St.
Manistique, MI 49954
Email: editor@pioneertribune.com
Phone: (906) 341-5200
Fax: (906) 341-5914

Note: Individuals are limited to one letter per month. One rebuttal letter per individual is permitted. Letters to the Editor must be no more than 500 words in length. All letters must be signed by the author and an address and telephone number must be provided (not to be printed). Letters are due by noon on Tuesday the week of publication. The Pioneer Tribune reserves the right to refuse letters and to edit letters for accuracy, concision, appropriateness, and according to AP guidelines. Printed letters are the opinion of the author and do not represent the opinion of the Pioneer Tribune.

State Savings Bank makes contribution to planned ECA performing arts center



Courtesy photo
Chris Gonyea, State Savings bank president and Julie Cochran, SSB branch manager, present State Savings Bank's contribution to Tom Linscheid, ECA board chair and Kelly Chamberlin, ECA board president.

CURTIS — The Erickson Center for the Arts recently announced a substantial contribution from State Savings Bank, located in Manistique. The contribution will go toward the organizations' goal of building a performing arts theater on its existing campus.

"We are thrilled to help the Erickson Center for the Arts move even closer to their financial goal in the construction of the new Performing Arts theater in Curtis," said Chris Gonyea, bank president. "The State Savings Bank values being part of the Curtis community and we are proud to be able to join

our customers and businesses in supporting the arts. The Erickson Center is truly an asset to that within the area and entire eastern Upper Peninsula, while supporting local artists, crafters and performers."

Construction of the 160-seat performing arts theater, with state-of-the-art facilities will allow the ECA to expand and improve the quality of our performances," she continued. "Assuming the fundraising goal is met, construction of the new building is tentatively set to begin in the spring/summer of 2020 with a grand opening in 2021."

"We thank the bank for its support and belief in the vitality of Curtis and the surrounding area," said Kelly Chamberlin, ECA board

president. The confidence shown in us by our donors is gratifying and serves to remind us that without the support of our patrons, donors and volunteers, we would not be where we are today.

Construction of the 160-seat performing arts theater, with state-of-the-art facilities will allow the ECA to expand and improve the quality of our performances," she continued. "Assuming the fundraising goal is met, construction of the new building is tentatively set to begin in the spring/summer of 2020 with a grand opening in 2021."



Quiz Bowlin'

Courtesy photo
Manistique Area Schools' Junior High Quiz Bowl team recently competed at the Upper Peninsula Junior High Quiz Tournament. Sponsored by North Menominee County Community Schools, the event was held in Bark River Dec. 7. The meet hosted 24 teams from across the U.P. in a round robin competition of play. The Emeralds had two teams participating in the tournament. Members of this year's teams are, front row, left to right: Felicia Clifton, Kevin Baker, Nora Cunningham, Calista Watchorn, and Cheyenne Williams. Back row: Julietta Knight, Nathan Schoenow, Nick Frankovich, Grace Miller, and Bayleigh Buttermore. The teams are coached by Jackie Burns.

News Brief

Bay College M-TEC to offer working services, part 2 training in January

ESCANABA — Bay College Training and Development (M-TEC) will be offering Part 2 — Walking-Working Surfaces for General Industry, Jan. 8, from 8:30 a.m.-4 p.m.

Part 2 — Walking Working Surfaces is a performance rule set and intended to provide information regarding safety in all places of employment where employees access horizontal and vertical walking working surfaces.

The rules are an adoption of the

and deck boards, scaffolds and rope decent systems. The cost of the training is \$130, and includes lunch and course materials. To register or view additional course offerings, visit mytraining.baycollege.edu. For questions or more information, call (906) 217-4200.

Whitmer signs supplemental budget package

LANSING — On Friday, Gov. Whitmer signed every bill in the Fiscal Year 2020 supplemental budget package passed by the Michigan Legislature.

"This is a good deal for Michigan taxpayers that will provide essential funding for public health, public safety, and public education," said Gov. Whitmer. "Like any good bipartisan agreement, this includes funding priorities that both parties support. We all know that this process hasn't been easy, but at the end of the day, we were able to work together in a bipartisan manner to reach an agreement that will benefit everyone in Michigan."

The supplemental budget in-

cludes \$45 million for the Department of Corrections, which will allow us to upgrade tethers to continue monitoring dangerous felons. And it funds the continued operation of our vocational villages, which are working effectively to ensure returning citizens have the skills they need to get a good job.

The supplemental will ensure funding to clean up Michigan's drinking water, including \$4.5 million for DHHS for lead and copper rule implementation and \$15 million to EGLE, which will fully fund the governor's \$120 million executive recommendation to help clean up drinking water.

The supplemental includes funding for literacy coaches at the execu-

tive recommendation (\$10.5 million), which will triple the number of literacy coaches in our state.

Finally, the supplemental also funds critical public safety measures, including \$33 million for key DTMB services, like maintaining the public safety communication system used by first responders across the state.

As part of the package, Gov. Whitmer signed a bill that would require the Michigan Legislature to provide the governor with a budget proposal by July 1.

"This is an important reform that will ensure our public schools know what their budget will be

at the start of their fiscal year," said Whitmer. "I'm glad that in the future, the legislature will roll up their sleeves and get a budget to my desk before their summer break."

The bills Gov. Whitmer signed today include Senate Bills 152 and 154 sponsored by Sen. Jim Stamas (SD-36), House Bill 5176 sponsored by Rep. Shane Hernandez (HD-83), House Bill 5177 sponsored by Rep. Greg VanWoerkom (HD-91), House Bills 4336 sponsored by Rep. Steven Johnson, R-Wayland, and House Bill 4574 and Rep. David LaGrand, D-Grand Rapids.

NOTICE OF ANNUAL ORGANIZATIONAL MEETING
PLEASE TAKE NOTICE that there will be an annual organizational meeting of the Schoolcraft County Board of Commissioners on **Friday, January 3, 2020**, commencing at **9:00 A.M.** in the District Courtroom of the Schoolcraft County Building, Manistique, Michigan 49854. The following is the proposed agenda for said meeting:

1. Call to order
2. Roll call
3. Election of Chairperson
4. Election of Vice-Chairperson
5. Set 2020 meeting dates
6. Adjournment

/s/ Beth A. Edwards
Beth A. Edwards, Clerk
Schoolcraft County Board of Commissioners

Life is busy...
let an agent handle your insurance, and relax knowing they have you covered.

SUPERIOR STATE AGENCY
Manistique • (906) 341-6907
www.superiorstate.com

Auto-Owners
INSURANCE
LIFE • HOME • CAR • BUSINESS

The Finest Formalwear

The right style and fit for your big day

Complete TUXEDO and SUIT Rentals

Book your appointment today for a consultation and custom fitting

Shoes Optional • Big & Tall Sizes • Alterations included

Peoples STORE

239 S. Cedar Street • Manistique • 906-341-2779
OPEN Mon-Fri 9-5 ~ Sat 9-4

Brazda's Heating & Refrigeration Sales & Service

RESIDENTIAL • COMMERCIAL • INDUSTRIAL

- Heating
- Air Conditioning
- Refrigeration
- Ice Machines
- Restaurant Equipment
- Duct Work
- Appliance Repair
- WE SERVICE ALL BRANDS™

FREE ESTIMATES
{We are also a Regency Fireplace Dealer}

New Business Hours: Mon. - Fri. 8 a.m. - 5 p.m. *Turn to The Experts™*
163 River Street, Manistique, MI • 906-341-2279
24-HOUR SERVICE

GIVE DELICIOUS GIFTS THEY WILL Love

100% GUARANTEE
*They'll Love it or your Honey Back!

THE FAVORITE GIFT

- 4 (6 oz.) Filet Mignons
- 4 (4 oz.) Boneless Pork Chops
- 4 (4 oz.) Omaha Steaks Burgers
- 4 (2.8 oz.) Potatoes au Gratin
- 4 (4 oz.) Caramel Apple Tartlets
- Signature Seasoning Packet

\$249.99* separately
COMBO PRICE \$69.99

+4 FREE BURGERS!

16 MAIN COURSES
SALAD & DESSERT

Order Now **1.833.679.0100** | OmahaSteaks.com/nice66

Ask for The Favorite Gift **59104EVD**

OMAHA STEAKS
SINCE 1917

©2019 Omaha Steaks, Inc. All rights reserved. Omaha Steaks is a registered trademark of Omaha Steaks, Inc. Omaha Steaks is a service mark of Omaha Steaks, Inc. Omaha Steaks is a registered trademark of Omaha Steaks, Inc. Omaha Steaks is a service mark of Omaha Steaks, Inc. Omaha Steaks is a registered trademark of Omaha Steaks, Inc. Omaha Steaks is a service mark of Omaha Steaks, Inc.



Up on the stage top

Pioneer Tribune photos
The Manistique Middle and High School band held a Christmas concert last Wednesday in the auditorium. The band played various Christmas favorites, played to a full house, as families, friends, and spectators watched the performance.

MDHHS to increase support for families participating in FIP

Families soon to get up to \$200 a month

LANSING — Michigan residents who receive child support in addition to cash assistance through the Family Independence Program will soon see more money they can use to buy food, clothing and other items for their children under a change in Michigan's fiscal year 2020 budget.

The budget signed by Gov. Gretchen Whitmer includes \$946,000 to support child support pass-through payments of up to \$200 a month for qualifying households that receive assistance through FIP. This relatively modest investment will have a substantial return for Michigan, with an estimated 2,700 families receiving an additional \$2.5 million in child support.

Currently, the Michigan Department of Health and Human Services keeps child support payments that would be paid to parents who receive FIP. This collected money is paid to the federal and state government to offset FIP expenses. However, federal law permits states to "pass through" up to \$200 a month of child support to families with two or more children and up to \$100 to families with one child.

"Providing greater opportunities for families to succeed is one of MDHHS's top priorities," said Erin Frisch, MDHHS chief deputy director for opportunity. "This change accomplishes that and is a win for families that receive child support and their communities. In addition to helping families, providing this additional financial support stimulates the economies of communities where parents live, as they will soon have more to spend on groceries, clothes, and other essentials of living."

Sending child support to the families rather than keeping it increases participation and cooperation with Michigan's Child Support program because the paying parents know that a portion of what they pay will go to the family, versus going to the government.

The parent or guardian who receives the child support, is also more likely to help the program establish and enforce child support orders.

Before 2012, Michigan provided a pass-through payment of \$50 to parents receiving FIP. This was eliminated due to budget constraints.

"Michigan should be commended for helping more families get the support they need and deserve for their children," said Vicki Turetsky, head of the federal Office of Child Support Enforcement in the U.S. Department of Health and Human Services from 2009 to 2017 and now a consultant. "In states across the country, we have seen that when these dollars are made available to families, the families have more income and noncustodial parents pay more child support and agree more readily to establish paternity and support orders. Child protection complaints even go down. The child support paid by parents matters to their children. Research finds over and over again that children who receive child support do better in school, for example."

Families receiving FIP will receive the pass-through only if the parent who owes child support pays it. Additionally, if the paying parent pays less than \$100, the family will only receive the amount he or she pays.

Pass-through child support payments will begin in January. Letters will be mailed to all affected FIP recipients notifying them of the change.

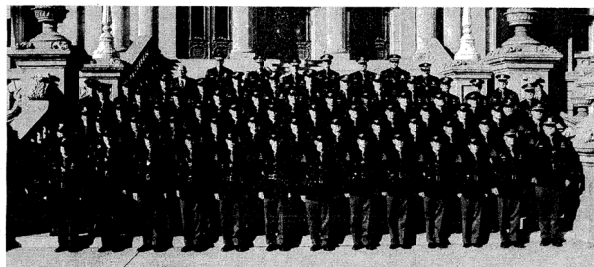
Michigan State Police recruits graduate, one assigned to Manistique's Outpost

LANSING — Michigan's newest troopers will soon report to work at Michigan State Police posts across the state after graduating from the 136th Trooper Recruit School recently. Rec. Juliana Arnold, from Dearborn, has been assigned to the Manistique Outpost.

MSP Director Col. Joe Gasper administered the Oath of Office during the ceremony at the Lansing Center. Gov. Gretchen Whitmer delivered the keynote address. "Public service is a very honorable profession," said Whitmer. "Thank you for choosing to serve our residents and for committing yourselves to this career. I support you wish and each of you a long, safe and rewarding career with the Michigan State Police."

In his address to the graduates, Gasper spoke about the positive impact troopers can make in people's lives, telling the class, "I'm a strong advocate of fostering a positive mindset and I challenge you to look for the positives in all your experiences. The power of vision is extraordinary and incredible things happen when you are open to the possibilities."

Tpr. Victor Arroyo III was elected Class Orator by his fellow recruits and spoke on behalf of the graduating class at today's ceremony. Other award recipients included Tpr. Andrew Golden who



The 136th Trooper Recruit School graduates were recently sworn in as MSP troopers.

Courtesy photo

received the Team Building and Outstanding Performance awards, Tpr. Zachary Verant who received the Academic Achievement Award and Tpr. Aaron Killingbeck who received the Marksmanship Award.

The 136th Trooper Recruit School began on June 30, at the MSP Training Academy in Lansing.

For the past 25 weeks, recruits received training in firearms, water safety, defensive tactics, patrol techniques, report writing, ethics,

cultural diversity and implicit bias, decision making, leadership, first aid, criminal law, crime scene processing and precision driving.

As part of the department's commitment to community outreach and service, the recruits participated in a holiday toy drive in partnership with the Marine Corps Reserve "Toys for Tots" and adopted two families for Christmas. In addition, they hosted a Thanksgiving meal giveaway for veterans, organized a 5K run/walk with proceeds

going to "Warmth 4 Warriors," and collected items for deployed military members.

The MSP is actively recruiting for future trooper recruit schools. Persons interested in learning more about a career with the MSP should visit www.michigan.gov/mspjobs for information on how to apply.

The next trooper recruit school starts Jan. 26, 2020. Including these new troopers, there are 1,238 troopers assigned statewide.

Holiday Week Early Deadlines

Deadline has moved up for the Jan. 2 issue

Press releases and ads are due by the following:
Jan. 2
Friday, Dec. 27 - 4pm



Pioneer Tribune
Your Hometown Newspaper

In Print, Online & Mobile
906.341.5200 • www.pioneertribune.com

Need Blueprint Copies?

Send your files to us for same day service.

email PDF file to: ads@pioneertribune.com

24x36 ~ \$2

PIONEER TRIBUNE
212 Walnut St., Manistique
Open Mon-Thur 8:30 to 4:30/Fri 8:30 to 4
(906) 341-5200

THE FLOWER SHOP
at Ben Franklin

Handcrafted Fresh Bouquets and Arrangements
Everyday • Sympathy • Weddings • Prom and More

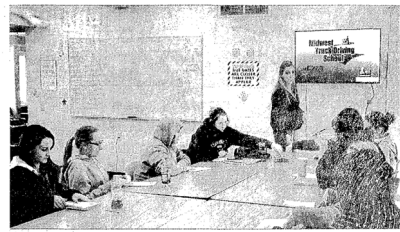
www.flowersinmanistique.com

Downtown Manistique | 906-341-8165 | 877-341-8165



A look at driving

Courtesy photo
Midwest Truck Driving School was the latest training for the Jobs for Michigan Students at the Jack Reque Alternative High School. Midwest provided a presentation on obtaining their CDL A and what it's like being an over the road truck driver, as well as driving for local companies. Truck drivers are one of the "Hot 50" jobs in the state of Michigan. Having a CDL A is in high demand in Schoolcraft County as well as in the entire state.



Counseling Corner

American Counseling Association

It's a common problem many of us encounter as we age — we forget more things and it seems to happen more frequently. It can be a frustrating experience and even a frightening one as we worry that serious issues of dementia are just around the corner.

While researchers are only beginning to understand exactly why our brains seem to be more prone to memory issues as we get older, they have, however, begun to make real progress in finding ways to help fight memory problems as we age. And the latest advice is that we all ought to begin proactively working to keep maximum brain function at a much earlier age.

Many older folks try to keep mentally active through activities like crossword or Sudoku puzzles, and that's a good thing. But more recent research is finding that such activities simply may not be providing the level of stimulation needed for real "brain fitness."

Brain fitness starts with mental activities that truly engage your mental powers. They can take a variety of forms. Critical thinking, for example, requires you to think about a topic that you understand and agree with, and then to look at that same subject from the opposite point of view. Can you evaluate the strengths and weaknesses of that subject from a totally different side than the one you're normally on?

You want to stimulate your brain in ways that require it to really think about finding new solutions. Locating new recipes and then working out ways to improve them is such an activity. Learning and using new vocabulary words, tackling a foreign language, or taking up a new hobby like art or music, are all ways to maximize brain effort and increase brain stimulation.

Brain fitness also requires recognizing that the brain is a part of your body and is affected by your fitness. It requires exercising more, eating healthier and staying fit overall. It means staying on top of potential health risks, like your blood pressure and cholesterol levels.

Doing a daily crossword puzzle may be fun and provide some brain stimulation, but really working for brain fitness means doing things to improve your reasoning, problem-solving and memory abilities, activities that are a real mental stretch. At the same time, staying fit and managing health risks are the keys that can all add up to better mental health and long, positive brain function.

"Counseling Corner" is provided by the American Counseling Association. Comments and questions to ACAcorner@counseling.org or visit the ACA website at www.counseling.org

Treasury recommends preparing for upcoming 2020 tax season

LANSING — With the state income tax filing season beginning in late January 2020, the Michigan Department of Treasury is asking taxpayers to take a couple of actions today to ensure returns are processed promptly.

Taxpayers are encouraged to begin gathering tax-related documents and updating their home addresses with current and previous employers so W-2s and other financial documents can be mailed to the correct address. Incorrect

addresses typically lead to information being mailed to the wrong location and could cause delays when filing tax returns.

"Taxpayers who prepare today are less likely to face processing delays," State Treasurer Rachael Eubanks said. "I encourage taxpayers to take a few moments out of their busy holiday schedules to ensure all of their paperwork is in order."

Other notable items for Michigan's 2020 filing season (2019 tax

year):
Beginning in January 2020, forms and instructions may be viewed and downloaded from www.michigan.gov/taxes. In addition, commonly used forms will continue to be available at Treasury offices, most public libraries, northern Michigan post offices and Michigan Department of Health and Human Services county offices.

When tax season begins in late January, taxpayers can e-file their

state tax returns instead of mailing a paper return. To learn more, go to www.mifastfile.org.

Taxpayers may elect to use direct debit when e-filing their 2019 tax returns. A direct debit is a tax payment electronically withdraws from the taxpayer's bank account using the bank information provided on the

Tax season continued on A6

Editor's Note: The following information is from Manistiquie Public Safety dispatch logbooks recorded at the time the calls were received.

- Tuesday, Dec. 17, 2019**
4:05 p.m., wellbeing check, Gero Avenue.
6:50 p.m., DPW request, snow covered and slippery roads.
Wednesday, Dec. 18, 2019
11:50 a.m., harassment, within the city.
3:00 p.m., VCSA, within the city.
9:20 p.m., domestic, within the city.
10:15 p.m., citizen assist, Gero Avenue.
11:50 p.m., citizen assist, Thompson Township.
4:44 a.m., DPW call out, slippery roads.
Thursday, Dec. 19, 2019
7:30 a.m., department assist, Thompson Township.
8:30 a.m., safety concern, within the city.
10:40 a.m., assault, within the city.
1:55 p.m., neighbor dispute, Pearl Street.
3:02 p.m., lock out, E. Lakeshore drive.
5:36 p.m., department assist, Manistiquie Avenue.
9:15 p.m., department assist,

- Manistiquie Ave.
2:15 a.m., intoxicated subjects, Deer Street.
Friday, Dec. 20, 2019
8:41 a.m., trespassing, Park Avenue.
9:00 a.m., trespassing arrest, Main Street.
12:24 p.m., hit and run PIA, Lake Street.
2:27 p.m., department assist, Manistiquie Avenue.
3:03 p.m., department assist, Main Street.
4:59 p.m., wellbeing check, Gero Avenue.
5:10 p.m., citizen assist, Range Street.
8:01 p.m., suspicious situation, Gero Ave.
2:45 a.m., lift assist, Steuben Street.
Saturday, Dec. 21, 2019
9:00 a.m., lock out, Main Street.
9:35 a.m., DPW call out, icy roads.
2:21 p.m., unwanted person, Garden Avenue.
3:00 p.m., domestic assault/child abuse Garden Avenue.
4:40 p.m., safety concern, Quarry Lake.
6:35 p.m., one car PDA, River Street.

Police Log

Manistiquie Public Safety Department

- 8:50 p.m., threats, Cherry Street.
9:45 p.m., DPW request, icy roads.
Sunday, Dec. 22, 2019
6:10 a.m., department assist, County Road 448.
10:23 a.m., fire alarm, Main Street.
10:30 a.m., wellbeing check, Oak Street.
1:48 p.m., disorderly subjects, S. Maple Street.
2:55 p.m., found property, S. Cedar Street.
9:35 p.m., safety concern, E. Lakeshore Drive.
10:00 p.m., property inspection, Deer Street.

Cedar Street Cinemas

MOVIE GUIDE

Star Wars
The Rise of Skywalker
Run Time: 2hr 22min
Shown 7:00 p.m. nightly
RATED: PG-13
Sunday Matinee 1:00 p.m.

Jumanji: Welcome to the Jungle
Run Time: 1hr 59min
Shown 7:15 p.m. nightly
RATED: PG-13
Sunday Matinee 1:15 p.m.

Downtown Manistiquie | Movie Guide: (906) 341-6622

2020

HAPPY NEW YEAR

It's time to wish our friends and customers great happiness and success in 2020 and beyond!!

HOLIDAY HOURS: Dec. 31 9am-2pm ~ Jan. 1 CLOSED

PUTVIN'S
Health Mart
PHARMACY

Regular Store Hours:
Mon-Fri 9am to 7 pm
Sat 9am to 5pm
Sun 9am to 2pm

211 S. Cedar St. Manistiquie • (906) 341-5494 • 1-888-341-3001
Visit www.putvinhealthmart.com

SAVE 40%*

*The Regular Retail Price.

ON CHRISTMAS

Everyday Christmas, Christmas Home Decor, Velvet Bows, Artificial Christmas Floral, Xmas Floral Picks and Ribbon

Does not include Fresh Floral or Custom Work.

Ben Franklin

Downtown Manistiquie | 906.341.5911

WEDNESDAY is **FAMILY NIGHT BUFFET** Only **\$9.95** FREE to seniors with a complete senior card

THURSDAY is **CHICKEN NIGHT BUFFET** Only **\$9.95** FREE to seniors with a complete senior card

Big Boy

607 E. Lakeshore Dr. Manistiquie, Phone: 341-6941

Open to Public

24 HR EXERCISE FACILITY

Comfort™

726 E. Lakeshore Dr., Manistiquie (906) 341-6981

TAN Any Time at...

QUALITY INN

955 E. Lakeshore Dr., Manistiquie (906) 341-3777

Everyday Low Prices

Bring Home Comfy

OPEN New Years Eve 10am-2pm
CLOSED New Years Day

We also carry High-Efficiency Appliances from **SAMSUNG • GE • FRIGIDAIRE**
Refrigerators | Stoves | Microwaves
Dishwashers | Freezers | Washers | Dryers

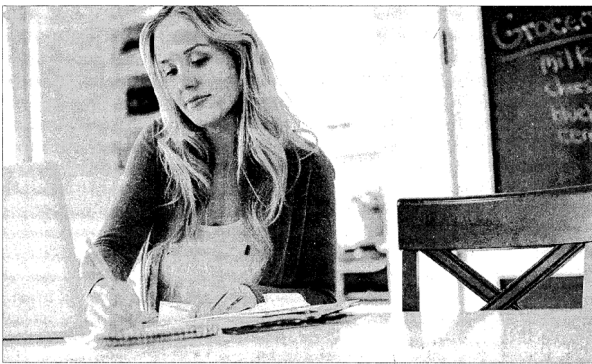
Westside

HOME FURNISHINGS & APPLIANCES

226 Deer St., Manistiquie | (906) 286-4400
OPEN Mon thru Fri 10am to 5:30pm and Sat 10am to 2pm **WE DELIVER!**

Three strategies to help achieve all those 2020 New Year's goals

When the clock strikes midnight on New Year's Eve, many people are living it up and toasting the dawn of a new year. Come the afternoon of January 1, those same people might have shifted their focus to the year ahead. January is a great time to set professional and personal goals. Setting goals can have a greater impact than people may know. Studies examining the importance of setting goals are few and far between, and some have even been revealed as fallacies after being accepted as authentic for years. But a 1979 study that asked newly minted Harvard MBA graduates about setting goals found that 13 percent had set goals. When interviewers followed up with survey participants a decade later, they found that the 13 percent who had set goals were earning, on average, twice as much as the 84 percent of participants who had set no specific goals at all. While there's no universal formula for success, successful people often cite the importance of setting goals and how doing so was integral to their success. The following are some strategies that may help people achieve their goals in the years ahead. 1. Make it a group effort. A 2013 study from a University of Connecticut researcher



found that there is a high level of correlation between users' exercise activities and their participation in these digital health communities. Such communities served as motivating factors for people aiming to live healthier lives. Relying on others for support, insight and motivation can be a great way to achieve your goals, no matter what those goals are. 2. Set goals big and small. No goal is too small, and

no big goal should be considered beyond reach. In fact, achieving small goals can provide motivation and inspiration along the way to realizing your larger goals. Devise a one-month plan, a six-month plan and a 12-month plan for the year ahead. The one-year plan can serve as your big goal, while the one- and six-month plans can serve as small motivators and great ways to track your progress en route to achiev-

ing your larger goal. 3. Write down why you're setting goals. People set goals for various reasons, and writing down the reasons they're pursuing their goals can serve as inspiration when challenges arise. For example, if you aspire to change careers to spend more time with your family, writing that down can provide motivation to keep looking for opportunities when a job search stalls or feels fruitless.

Grandparents Teach, Too

When the days are short and darkness is long, the Swedish people make their own light. One of their proverbs is "Those who wish to sing always find a song." Those who want light and happiness will make their own even in the darkness of winter. Their shortest days now are about six hours.

One of the first structures Swedish children learn to build is a snolykta pronounced snö-lik-ta. It is symbolic for many things. One is that great light shines in all of us. A snolykta or snow lantern is a cone made of large snow balls, with many tea lights in the center. They can be large, small, tall and thin or short and squat. Sometimes the top is left open like a volcano. Other times a person of honor, perhaps the youngest child or the oldest relative places the last ball on the top.

Packing Snow
To make a snolykta, children need snow that packs. If snow is powdery, shovel it into several plastic storage containers and bring snow inside to warm up. The snow either needs a lot of pressure or an increase in temperature. Changing the temperature is easier. You can start making snowballs indoors about five to six inches in diameter and take them outside before they stick together.

Choose a place in the yard where children will be able to see the

snolykta from windows at night. Remove snow from the area where you want the snolykta to be placed. They can be two or more feet in diameter. Like snowmen, you can make a family of them or line the sidewalk as a welcoming display for guests.

Shining Light
A large three-foot diameter family sized snolykta will require more than a hundred large snowballs. Young children can make a small one with less than 30 snow balls. Start by making a circle of snowballs on the ground. You'll need a perfect circle which is a little math problem. What will the children do to make a perfect circle since an oval will not look the same? Do you have any big circles around the house to use for a pattern? Children can also use a center spike and a string to make a circle.

Outline of the snolykta with snow balls and make each succeeding layer slightly indented toward the center. Leave spaces between the balls for light to shine through. Place many tea lights inside the snolykta on the ground next to the balls and cap with a large snowball, if you wish.

For more family fun see grandparentsteachtoo.blogspot.com; wnnu.fm.org/LearningThroughttheSeasons live and podcasts; Pinterest, and Facebook.

I can't believe that next week is the new year already. It's hard to believe it's already 2020. My mom used to tell me that time goes faster the older you get. Well at this stage in my life, I have to agree with her. I think of how fast this year has flown by and reflect back on all the accomplishments that I have personally made. I hope you can reflect back on and see your many accomplishments as well.

With the New Year also comes the reminder that the Senior Center will be closed for the New Year's holiday on both Dec. 31, and Jan. 1. Happy New Year to All! Normal hours will resume on Thursday, Jan. 2.

If you came to the Christmas party and had your picture taken with Santa, we have the pictures down here at the senior center office. Stop in on at your convenience to pick yours up if you haven't done so already.

The start of a new year also means that Newsletter dues for 2020 are due Jan. 1. Be sure to send yours in if you haven't done so yet. We don't want you to miss a single copy of "The Timepiece". If you aren't sure if your dues

are current or not, please call Carol at the center (341-5923) and she can let you know.

I know I have been mentioning this reminder for several weeks now, but someone just asked me again this morning, so I am including it once again.

When the Schoolcraft County offices are closed, the senior center is closed as well. All programs, card games, and activities scheduled on a closed day are cancelled as well. Listen to your local news

Senior Center

Jennifer VanDyck

stations, radio and Facebook for updates on closings on our bad weather days. You can also check on the county's website at www.schoolcraftcounty.net for up to date closing notices.

The Capital Campaign Committee put together a dessert cookbook and is selling this book for \$10 per copy. They are available in the senior center office during regular business hours. All proceeds from the sale of these books will benefit the renovations fund.

Tax season

continued from A1

electronically filed return. State income tax filers have the option of making payments electronically using the Michigan Department of Treasury's e-Payments system. Payments can be made by using electronic payment (eCheck), credit card or debit card. The ability to claim a refund for the 2015 tax year expires on April 15, 2020.

Taxpayers who have been recent victims of identity theft are asked to report their circumstances to the state Treasury Department. Reporting identity theft helps thwart

cybercriminals who attempt to file and steal a state tax refunds. To learn more about tax-related identity theft, go to www.michigan.gov/identitytheft.

Information about new developments for the 2019 tax year will be available on the state Treasury Department's website.

To learn the latest about state of Michigan taxes, go to www.michigan.gov/taxes or follow the state Treasury Department on Twitter at @MITreasury. Federal tax information is available at www.irs.gov.

DRYCLEANERS

Drop off site for Escanaba Steam Laundry & Dry Cleaners One week turnaround. Items dropped off before 10 am on Friday, returned the following Friday.

Peoples STORE

OPEN Monday through Friday 9-5; Saturday 9-4
239 S. Cedar St. • Manistique, MI 49854 • (906) 341-2779

Worship Directory

THESE LOCAL HOUSES OF WORSHIP WELCOME YOU

| | |
|---|---|
| <p>FIRST BAPTIST CHURCH 67 1/2 W. Main, Pastor: 1:15 Bible Study, Sunday School 9:30 am, Sunday Morning Worship Service 10:30 am, Child care is provided, Church Center 9:30 am</p> <p>BETHEL BAPTIST CHURCH Pastor: Joseph Church, 118 East Oak Street, Sunday School 9 am, Sunday services 10 am and 6 pm, Bible Study and Prayer Wednesday</p> <p>CHURCH OF THE REDEEMER PRESBYTERIAN 114 Main St., Sunday School 9:30 am, Morning Worship 11 am</p> <p>EVANGELICAL LUTHERAN CHURCH Rev. Dr. S. Blacker, Pastor, 2000 11th Street, Sunday School 9:30 am, Sunday worship 10:30 am, Pastor Terry Frankendorf</p> <p>MANISTIQUE BIBLE CHURCH 101400 US Highway 2, Manistique, (906) 341-2100, Sunday School 9:30 am, Morning Service 10:30 am, Afternoon Service 2:30 pm, Evening Service 7:30 pm</p> <p>Jehovah's Witnesses Kingdon Hall, 851 Garden Ave., Sunday 10 am, Public talk and discussion Tuesday 7 pm and 7:45 pm, Theocratic Ministry School and Service Wednesday 7:30 pm</p> <p>MANISTIQUE HARBOR, PENTECOSTAL CHURCH OF GOD 812 1/2 Hudson Ave 644-6843, Saturday, 6 pm</p> <p>ST. FRANCIS DE SALES CATHOLIC CHURCH 230 Oak St., Fr. Escanaba/Park, Pastor, Saturday Mass: 5:30 pm, Sunday Mass: 10 am, Confessions: Saturday 11 am, noon</p> <p>DIVINE INFANT OF PRAGUE CATHOLIC CHURCH Gulliver, MI, Saturday Mass, 6 pm</p> <p>ST. ALBAN'S EPISCOPAL CHURCH Corner of Oak and Range Streets, Widely worship service Sunday at 10:30 am, 11 am, Sunday and Wednesday evening services. "Come along with us!"</p> <p>SEVENTH DAY ADVENTIST CHURCH Pastor: David, 112 E. 2nd and Oak Ave Road, Saturday services, Sabbath school for children and adults 9 am and church services for 10:30 am, (906) 341-8844</p> <p>VICTORY LUTHERAN CHURCH located at Manistique Senior Center, 101 Main St., 4:30 pm, Sunday Pastor Arthur Dode</p> <p>FAYETTE CONGREGATIONAL CHURCH Sunday Service 10 am (906) 644-2370</p> <p>HAWAIIA COUNTY CHURCH Paul Varoni, Pastor, (906) 341-6090, Sunday School 9:45 am, Morning Worship 11 am, Sunday and Wednesday Evening</p> <p>Cedar Grove Menonite Church 8 miles east of Manistique on Kendall Rd, Sunday School 10 am, Morning service 11 am, Bible Study 7 pm, Wednesday, Club and Youth programs, Phone 341-5507</p> | <p>ST. ANDREW'S CHURCH Nelson, MI, Father Brian Gertler, Pastor, Father Mariluz Sheehan, Assoc. Pastor, Saturday Vigil Mass 5 pm, Sacrament of Reconciliation through month of September, (906) 644-2626</p> <p>COOKS CONGREGATIONAL CHURCH Pastor: Rev. Dr. James M. Cook, 1000 11th Street, Sunday School 9:30 am, Sunday Morning Service 10:30 am, Pastor: Rev. Dr. James M. Cook, 1000 11th Street, Thursday 8:30 pm of paragonage</p> <p>CHURCHES OF ST. JOHN THE BAPTIST Pastor: Rev. Dr. James M. Cook, 1000 11th Street, Assistant Pastor: Rev. Dr. James M. Cook, 1000 11th Street, Sacrament of Baptism by appointment, Sacrament of Reconciliation, if you know of anyone in the parish who is in need of this sacrament, please call the pastor, Pastor: Rev. Dr. James M. Cook, 1000 11th Street, Thursday 8:30 pm of paragonage</p> <p>ST. MARY MAGDALENE Cook, MI, Father Brian Gertler, Pastor, Father Mariluz Sheehan, Associate Pastor, Mass Sunday 8:30 am, Reconciliation, Bible Study 10 am, appointment, (906) 644-2626</p> <p>GARDEN CHRISTIAN FELLOWSHIP Pastor Greg Williamson - Sunday Worship 10 am, Youth Group Wed. 7 pm at Cooks, Weekly Growth Group and prayer, Thursday 8:30 pm at paragonage (906) 644-7642, 11 am, church</p> <p>ST. JUDE'S EPISCOPAL CHAPEL Catholic, 1000 11th Street, 9:30 am, Evensong, 7:30 am, Morning Prayer, 11 am, Evensong</p> <p>GERMAN CHRISTIAN FELLOWSHIP J.D. Leimmon, Pastor, 3 miles south of Gertler at 10-77, Morning services: 10 am, Our Doors are always open, (906) 596-5878</p> <p>COMMUNITY OF CHRIST CHURCH Del Allen, Gulliver on US2 - Sunday School 10 am, Worship Service 11 am, (906) 341-2424</p> <p>GRACE LUTHERAN CHURCH Gertler, Rev. Arthur J. Book, Service at 8:15 am - Sunday Church (906) 477-0131 Paragonage (906) 477-0772</p> <p>MAPLE GROVE MENONITE CHURCH Randy Holman, Pastor, Gulliver, MI, Sunday, Sunday School 10:30 am, Morning Service 11 am, Evening Service 7:30 pm</p> <p>CHRIST LUTHERAN 10277 Main St., Pastor: Rev. M. Sunday 9:30 am Pastor Dick Holman</p> <p>LIGHTHOUSE CHURCH Manistique Senior Center, 101 Main St., Sunday service 11 am, Contact Pastor: (906) 341-7862 for more information, www.lighthousemanistique.com</p> <p>UNITED METHODIST CHURCH Gertler, Rev. Paul Malloy, service 9:30 am.</p> |
|---|---|

DINING DIRECTORY

FREE HOLIDAY!

Cedar Street Cafe and coffee house
Breakfast Entrees
Sandwiches • Salads • Soups
Desserts • Daily Specials

Stop in for one of our special coffee creations Ask for a "Tuxedo" Or, how about trying a refreshing Italian Iced

Hours: Sun-Mon Tues-Thurs-Fri-Sat 8am - 2pm
Wednesday 8am-7pm
Mexican Night

Take-out available, call (906) 341-2469

220 S. Cedar St., Manistique

MAIN STREET PIZZA

• Pizzas
• Subs
• Salads
• Nachos
• Breadsticks

Ask about our Street Special

Our pizza with the works!

We Deliver 341-6966

203 S. Cedar St.
Downtown Manistique

THE FLOWER SHOP
Brought to you by Peoples Store

239 S. Cedar St., Manistique

State Savings Bank

239 S. Cedar St., Manistique

Visit us online at www.schoolcraftcountycommunityfoundation.com

PO Box 452 | Manistique, MI 49854
scccommunityfoundation@gmail.com | License #MICS11524

From Our Nest to Yours, Happy Holidays!

We're delighted to be spending another holiday season with good friends and neighbors like all of you. We wish you and yours a blessed and joy-filled holiday.

Accepting New Reservations

609N Intake Park Rd.
Manistique, MI 49854
906.341.4421

www.woodlandcontinuingcare.com

Lifestyles Brief

Schoolcraft County All Vets plan Jan. meeting

MANISTIQUE - The Schoolcraft County All Vets organization will hold a meeting Jan. 6. The meeting will take place at 7 p.m. inside VFW No. 4420 IN Manistique.

Contribution Form

Schoolcraft County COMMUNITY Foundation

Our Mission

"To improve our community in both the present and the future by providing a medium for managing endowments, making grants and involving our youth in order to meet our ever-changing community needs."

Your gift to the foundation is good forever!
Grants are based on interest earned on the initial investment.

Tax deductible donation amount

\$ _____

*For Good or Evil or Our County 21 Char. Pk.

Make checks out to Schoolcraft County Community Foundation

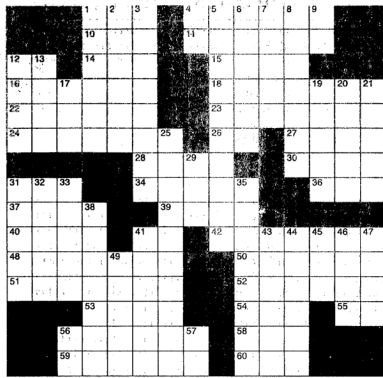
| | |
|---|---|
| <input type="checkbox"/> LIBRARY FUND | <input type="checkbox"/> HUMANE SOCIETY FUND |
| <input type="checkbox"/> KELLOGG FUND | <input type="checkbox"/> ADMINISTRATIVE ENDOWMENT |
| <input type="checkbox"/> PRINE SCHOLARSHIP FUND | <input type="checkbox"/> UNRESTRICTED ENDOWMENT |
| <input type="checkbox"/> ENVIRONMENTAL FUND | <input type="checkbox"/> SENEY NATURAL HISTORY ASSOCIATION FUND |
| <input type="checkbox"/> MEDICAL CARE FACILITY FUND | <input type="checkbox"/> MATTHEW PAUL VILLEMURE MEMORIAL FUND |
| <input type="checkbox"/> SENIOR CENTER FUND | <input type="checkbox"/> ROBERT C HUGHES MEMORIAL FUND |
| <input type="checkbox"/> MANISTIQUE LIONS CLUB | <input type="checkbox"/> ARTS & CULTURE FUND |
| <input type="checkbox"/> SIGHT AND HEARING FUND | |
| <input type="checkbox"/> HISTORICAL SOCIETY ENDOWMENT | |

Name (s): _____
Address: _____

In Memorial: _____

SEND MEMORIAL ACKNOWLEDGMENT TO:
Name: _____
Address: _____

Online donations now available



CLUES ACROSS

1. Hair care product
4. Looped
10. It's present in all living cells
11. Choose
12. South Dakota
14. Cash machine
15. Of the pia mater
16. Ancient Egyptian documents
18. Layers at the back of the eyeballs
22. Not perceived
23. Look over
24. Improve a tire
26. Time zone
27. Main branch of Islam
28. Bark of the mulberry tree
30. Sea eagles
31. Records heart muscle activity (abbr.)
34. Famed Hollywood producer
36. Yuck!
37. Reject outright and bluntly
39. 500, car race
40. Small heap on pile
41. Type of degree (abbr.)
42. Contagious skin disease

CLUES DOWN

1. More cloudy
2. Main course
3. Protect with plastic
4. Equally
5. Rebuked
6. Friend to a salesman
7. Warms up
8. Overshadow
9. Interior lineman in football
12. San Antonio hipsters
13. Comedian Cook

48. Erases from a surface
50. In an enthusiastic way
51. Begin again
52. Intricately produced pattern
53. It flows NW to the Seine
54. Be obliged to repay
55. Southeast
56. Slip in
58. Leisure time activity
59. Breastbones
60. Sun up in New York

17. Time zone
19. First PM of India
20. Performing perfectly
21. A way to hide
25. Former NBA commissioner
29. Peter's last name
31. Outlying suburb of London
32. Used to cut steak
33. Deep inlets
35. Type of tree
38. Done openly and unashamedly
41. Indigenous person of N. Africa
43. Confessed openly
44. A way to separate with an instrument
45. Influential journalist
46. Manning and Roth are two
47. One who cares for horses in India
49. Something to believe in
56. Form of "to be"
57. Atomic #73

All puzzle answers are on page D1

S U D O K O K U

| | | | | | | | |
|---|---|---|---|---|---|---|---|
| | | 8 | | 4 | | 3 | 2 |
| | | | 9 | 1 | | 4 | 5 |
| 8 | | | | | 7 | | |
| | 9 | 2 | 8 | | 6 | | 1 |
| | | 1 | | | | | 6 |
| 2 | | | | | | 6 | |
| 5 | | | 6 | 3 | | | 4 |
| | | | | 5 | 8 | | |

Level: Intermediate

Word Search
GET COOKING WORD SEARCH

Find the words hidden vertically, horizontally, diagonally, and backwards.

AL DENTE DASH GRATE SEAR
BASTE DICE JULIENNE SIMMER
BRAISE DREDGE KNEAD STEW
BROWN DRESS MARINATE WHISK
CARAMELIZE FILLET POACH
CHOP FOLD PUREE
CUBE GLAZE ROAST

CRYPTO FUN

Determine the code to reveal the answer!

Save the code to discover words related to culinary arts. Each number corresponds to a letter. (Hint: 12 = I)

A. 6 26 11 13
Clue: Professional cook

B. 6 2 12 1 12 7 11
Clue: Type of food

C. 1 8 9 8 12 3 7
Clue: Work area

D. 13 3 3 17
Clue: Things to eat

Merchants Committee names Christmas Drawing winners

MANISTIQUE — A few lucky area residents received an early Christmas gift from the Schoolcraft Tourism and Commerce Manistique Merchant Committee. Participating businesses had sign up boxes for the Christmas Drawing since the day after Thanksgiving.

On Dec. 20, all participating businesses had the opportunity to call one of their patrons and share the news of their selection in the drawings. The mystery envelopes held by each business had an amount from \$50 to \$300.

Winning \$300 was Cathy White. Her name was drawn at the Mustard Seed.

Mike Jarski won \$200 at Manistique Radio and Bobbi Minor's name was selected at Jack's Fresh Market for \$200.

Those who won \$100 were: Nancy Kounellis, Ben Franklin; Josh Holcomb, Zellar Sanitation; Carl Metz, Limestone Federal Credit Union; and Barb Bosanick, 6032 Cutting Crew.

The \$75 winners were: Josh Bosanic, Pauls Plumbing; Jemma Goudreau, Schones Chiropractic; Ann MacGregor, Camp and Coastal; George Carroll, Main Street; Amber Munson, Superior State Agency; Amy Nault, Thompson Veterinary Clinic; Paula Aldrich, Apple Barrel; and Kelly Rozich, State Savings Bank.

Those winning \$50 winners were: Harry Mageski, Martins Carpets; Lynn Warth, Studio 906; Kyle Reiff, Bostique; Amanda Berglund, Clydes; Jerry Terrian, Manistique Computers; Jeff Hewitt, Hoholik's Ace Hardware; Tony Rozich, Nelson Shoe Store; Cathy Ozanich, Flowers by Jodi; Kathy Gustafson, St. Vincent de Paul; Emily Deyo, Gulliver Crossroads; Penny Schmidt, Petique; Jeremy Williams, Wheaty's; Lori Jack, Putvin Drug Store; Mary LaFleur, Manistique Oil; and Margo Withey, mBank.

The Merchant Committee meets monthly on the first Thursday of the month at Big Boy. January's meeting will be on the second Thursday, Jan. 9, at 8:05 a.m.

All merchants are invited to attend.

MDOT: Plow or shovel carefully

LANSING — Snow has really piled up throughout Michigan, and the Michigan Department of Transportation is reminding residents living along state highways to be careful and follow the law as they plow or shovel snow.

Michigan Vehicle Code 257.677a prohibits "the obstruction of safety vision by removal or deposit of snow, ice, or slush." This includes the end of driveways, where banked snow can reduce visibility for vehicles trying to enter the roadway.

"Growing piles of snow make it difficult for drivers to make sure it's safe to pull out onto the highway, and tough for drivers to see other vehicles waiting to pull out," said State Transportation Director Paul C. Ajegeba. "Our crews work to keep the shoulders clear and knock down snowbanks at intersections for motorist safety, and residents and business owners need to do the same at their driveways."

Trails of snow left on the pavement while plowing across the road also can cause problems. The snow can become packed and create ridges on the road, or, as temperatures change, the area can become icy.

"Careless plowing creates an added hazard to unsuspecting motorists and plow drivers," Ajegeba said.

It also is important to remember that many local ordinances require residents and businesses to keep sidewalks clear of snow. This is important for pedestrians and those waiting for public transit.

Circuit Court
11th Judicial

Becky Ann Burt, 50, West Kendall Road, Manistique, pled guilty in 11th Judicial Circuit Court to one count of larceny from a building (10/19). Assessed \$68 state costs, \$130 crime victim rights assessment, \$300 other costs, \$498 total. Sentenced to serve 11 months in the Schoolcraft County Jail, 15 days immediately with credit for 15 days served, balance to be held in abeyance pending successful completion of two years probation.

Drug bust

continued from A1

up to 20 years in prison and/or a \$25,000 fine.

Siewert was also charged as being a habitual offender — second offense notice. His cash or surety bond was set at \$250,000.

Dana Le Fagan, 29, of Manistique was charged with: one count of controlled substance — maintaining a drug house, a high court misdemeanor punishable by up to two years and/or a \$25,000 fine. Her cash or surety bond was set at \$25,000.

Matthew Johnathon Bush, 31, of Manistique, was charged with: one count of controlled substance — maintaining a drug house, a high court misdemeanor punishable by up to two years and/or \$25,000.

A personal recognizance bond was set for Bush at \$10,000.

Siewert, Fagan, and Bush are scheduled for their probable cause hearing Dec. 30 at 9 a.m. and a preliminary hearing is scheduled for the trio Jan. 6 at 9 a.m.

MPSD says the investigation into methamphetamine and other illegal narcotics trafficking and possession continues in Manistique and Schoolcraft County and, therefore, no further details about the arrests are being released at this time.

Need Copies?

Stop in or send your files to us today.

Black and White • Color

email PDF file to: ads@pioneertribune.com

PIONEER TRIBUNE

212 Walnut St., Manistique
Open Mon-Thur 8:30 a.m.-4:30 p.m. Fri-Sat 8:30 a.m.-4:30 p.m.

www.pioneertribune.com

HIAWATHA SHORES RECYCLING & DISPOSAL

Curbside Service includes a 95 or 65 gal. cart!

Weekly, 2X or 1X per month Service Options
No Service Contract Required!

Locally owned and operated.

(906) 341-2001

Accepting Visa, MasterCard and Discover
Online Bill Pay, Recurring Payment Processing, and Email Billing Available

OPEN ENROLLMENT
Burt Township School - Grand Marais, MI
January 6 until January 24

- Exceptional and Student-Centered Staff Members
- Personalized Learning Opportunities for ALL Students
- Small Class Size to Support Individualized Assistance
- Extracurricular Opportunities
- Educational Environment that is Superior
- Access to Current Educational Technology and Resources
- District Provided Transportation to/from Seney and Germfask Area
- Summer 2019 Building Renovations Demonstrate Community Support for Education

Polar Bears

Come Experience the Polar Bear pride!

For more information call (906) 494-2521 or email superintendent@burt.school

Top 10 of 2019

continued from A1

5 Contractors spent much of the summer battling high water levels in an attempt to complete the third phase of the years-long Manistique Marina update. The project will include: an updated parking lot on the eastern half of the marina, new sidewalks, new electric and water service, lighting upgrades, and the installation of new, floating docks. The portion of the marina roadway that goes beyond the parking lot will be removed and made into green space and new walkways and railings will be installed around the docks. There will be 19 boat slips available, as well as the existing broadside docking. The creation of a boulevard entrance into the marina originally included as part of the project was delayed and the project no longer includes dredging of the marina proper which was deemed unnecessary due to the high lake levels. The nearly \$2.4 million project will see wrap-up work completed in spring of 2020 with the expectation that the marina will be fully operational for the entire 2020 season.

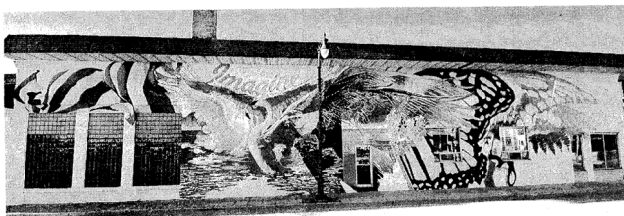


Pioneer Tribune file photo
Contractors struggled against the high water levels of Lake Michigan this summer while working on the Manistique Marina update.

4 mBank, the largest community bank headquartered in the Upper Peninsula, announced in October that it had made its second significant purchase of the year by buying the former Jack's Supervalu Building on Maple Street. Unlike the purchase and pending donation of the former Creighton building to Lake Effect Community Arts, mBank will retain its newest purchase. The bank plans to renovate the entire building and occupy approximately 15,000 square feet of the 19,000 square-foot building, using it as non-client interfacing office space for operational and administrative offices for current and possible future staff additions. Additionally, plans are in place to create space for an executive training center and community conference room for utilization by local and visiting businesses or organizations. The space is expected to accommodate approximately 70 people. Construction is currently underway in the building and is expected to be completed and ready for use early next spring.

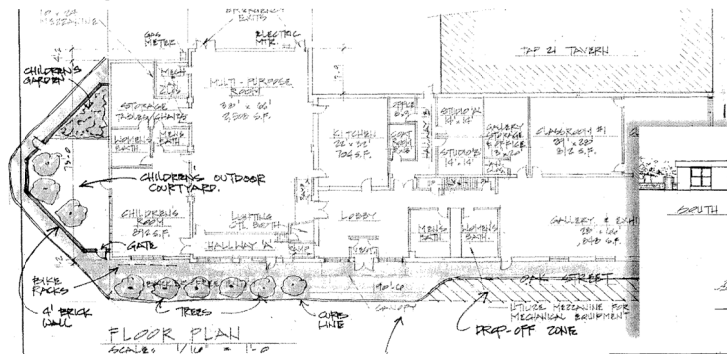


Courtesy rendering
Above, an architectural rendering depicts the planned mBank Business Center which will be located in the former Jack's Supervalu building located on Maple Street.



Pioneer Tribune photo
The "Imagine" mural on the mBank Arts and Cultural Center was a welcome addition to Manistique this summer.

The artwork. The mural adorns the former Creighton building located on the corner of Oak and Cedar streets which is the planned mBank Arts and Cultural Center. The "wing wall" allows spectators to become a part of the artwork and have "wings" by standing in a certain spot in front of the wall. The Svelata Foundation has partnered with Schoolcraft Tourism and Commerce and Lake Effects Community Arts Center to create both Manistique murals. A future mural project is being planned for the alley between St. Vincent de Paul's two buildings on a smaller scale.



Courtesy renderings
Above, the building site plan rendering for the new mBank Arts and Cultural Center is shown. At right, the outside renderings are shown.

3 The Manistique Lakeshore Campground remains a bright spot for the city of Manistique. In February, the Manistique Downtown Development Authority voted to pursue a land acquisition grant from the Michigan Natural Resources Trust Fund. The land the DDA is looking to acquire consists of seven acres of land west of the current campground. This acquisition would allow for the expansion of the campground, which has been astonishingly successful in its first two seasons. By the end of the year in 2018, campground revenues were at \$237,683, while expenses were \$116,657. In 2019, approximately 7,668 nights were reserved at the campground. For 2020, the city is anticipating \$278,000 in site reservations, with a total anticipated revenue of \$288,900 and \$288,521 for expenses for the campground. The final figures for 2019's season will be released when the city completes its financial audit and submits it to the state Dec. 31, 2019.

2 The mBank Arts and Cultural Center, to be operated by Lake Effect Community Arts, started to come to fruition in 2019, and work continues to see progress behind the scenes. The center will be located at the former Creighton Building on the corner of South Cedar St. and Oak St. The building was purchased by mBank and was donated to LECA to develop the center. The LECA, a 501(c)(3) non-profit organization, is currently pursuing a 90 percent grant, 10 percent match Community Development Block Grant. The Michigan Economic Development Corporation, on behalf of the Michigan Strategic Fund, administers the CDBG program on behalf of the Michigan Strategic Fund. LECA plans to occupy the building, fully, by spring. The total anticipated cost for the renovation is \$3 million. In an effort to acquire the 10 percent match needed for the grant, the LECA is currently fundraising. Donations to the community arts and cultural center over \$5,000 will be recognized on a donor wall within the center. Donor levels are: "friend" \$500-\$2,499; "supporter" \$2,500-\$4,999; "patron" \$5,000-\$14,999; "advocate" \$15,000-\$24,999; "founder" \$25,000-\$49,999; and "visionary" \$50,000-plus. The vision of the community arts and cultural center is to be a place where people of all ages can gather to share ideas and interests. Patrons of the art center will be able to shop for local art, attend a lecture series, view special exhibits, learn dance, take an art or cooking class, join a children's art club, watch community theater or local and visiting artist performances, as well as utilize rooms for meetings, special events, and drop-in groups. For more information about the Lake Effect Community Arts organization, visit lakeeffectarts.org or find them on Facebook.

To cost-effectively serve our members, while focusing on staff safety, we will streamline our member service centers and close our DeTour, Newberry and Sault Ste. Marie (Business Spur) locations effective January 1, 2020.

7 Payment Options

- In-person (2916 W. M-28, Dafter)
- Auto Pay
- Pay-by-Phone (1-844-843-6837)
- cloverland.com
- SmarHub
- Mail payment
- Authorized pay stations (35 banks & credit unions throughout our service area)

Cloverland
ELECTRIC COOPERATIVE

LUMBER

Limited Supply of

- 2x4's
- 2x6's
- Insulation Board
- OSB and More

Home
WE HAVE YOUR CAR KEY

Our expert service and complete line-up of products will keep your vehicle on the road for as long as possible. Only available at participating locations.

60% 92% SAME DAY

Don't Pay Dealership Pricing
Save up to 60% on Chip-Key Auto Remotes (Compared to Auto Dealerships)

Our experts can program or replace your transponder chip key an d get you back on the road.

ACE RENTAL PLACE

STIHL

The best tools for saving money. Apply Today! Visit www.ace-rental.com/93110 or see your local participating Ace Rewards retailer for more details. The creator and issuer of the Ace Rewards Visa Cards is U.S. Bank National Association, pursuant to a license from Visa U.S.A. Inc., and the card is available to United States residents only.

Nutrena

OPEN:
Mon-Fri 8-5:30 p.m.
Sat 8-4 pm and Sun 9-2 pm

We have Blown Insulation

Available with **FREE BLOWER RENTAL** with purchase of 20 or more Bags of Insulation

ACE HOHOLIK'S Inc.

145 River St. • Manistique, MI 49854 • (906) 341-5612 • FAX (906) 341-2768



8-Player Football Playoff selection change approved at fall meeting

EASTLANSING — The adoption of an enhanced strength-of-schedule formula to determine 8-Player Football Playoff qualifiers beginning with the 2020 season was the most notable action taken by the Representative Council of the Michigan High School Athletic Association during its fall meeting.

Generally, the Council takes only a few actions during its fall meetings, with topics often introduced for additional consideration and action during its meetings in winter and spring. This fall meeting saw the Council take only two actions,

8-Player Football continued on B4

NFL standings

NFL STATS as of 12-22-19

| AFC | W | L | T |
|-------------------|----|----|---|
| 1. NE Patriots | 12 | 3 | 0 |
| 2. Buffalo Bills | 10 | 5 | 0 |
| 3. New York Jets | 6 | 9 | 0 |
| 4. Miami Dolphins | 4 | 11 | 0 |

| West | W | L | T |
|--------------------|----|----|---|
| 1. K.C. Chiefs | 11 | 4 | 0 |
| 2. Oakland Raiders | 7 | 8 | 0 |
| 3. Denver Broncos | 6 | 9 | 0 |
| 4. L.A. Chargers | 5 | 10 | 0 |

| North | W | L | T |
|------------------------|----|----|---|
| 1. Baltimore Ravens | 13 | 2 | 0 |
| 2. Pittsburgh Steelers | 8 | 7 | 0 |
| 3. Cleveland Browns | 6 | 9 | 0 |
| 4. Cincinnati Bengals | 1 | 14 | 0 |

| South | W | L | T |
|-------------------------|----|----|---|
| 1. Houston Texans | 10 | 5 | 0 |
| 2. Tennessee Titans | 8 | 7 | 0 |
| 3. Indianapolis Colts | 7 | 8 | 0 |
| 4. Jacksonville Jaguars | 5 | 10 | 0 |

| NFC | W | L | T |
|------------------------|---|----|---|
| 1. Philadelphia Eagles | 8 | 7 | 0 |
| 2. Dallas Cowboys | 7 | 8 | 0 |
| 3. N.Y. Giants | 4 | 11 | 0 |
| 4. Washington Redskins | 3 | 12 | 0 |

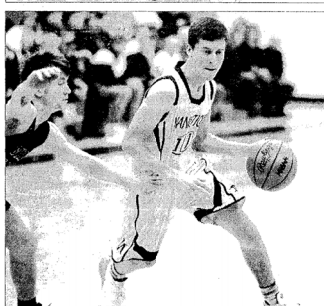
| West | W | L | T |
|------------------------|----|---|---|
| 1. San Francisco 49ers | 12 | 3 | 0 |
| 2. Seattle Seahawks | 11 | 4 | 0 |
| 3. L. A. Rams | 8 | 7 | 0 |
| 4. Arizona Cardinals | 5 | 9 | 1 |

| North | W | L | T |
|----------------------|----|----|---|
| 1. G.B. Packers | 11 | 3 | 0 |
| 2. Minnesota Vikings | 10 | 4 | 0 |
| 3. Chicago Bears | 7 | 8 | 0 |
| 4. Detroit Lions | 3 | 11 | 1 |

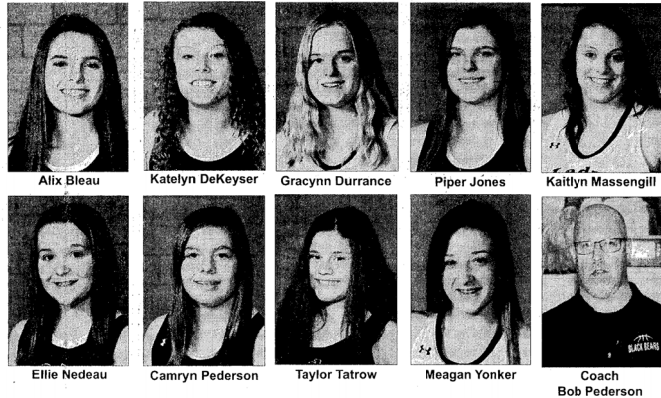
| South | W | L | T |
|-----------------------|----|----|---|
| 1. New Orleans Saints | 12 | 3 | 0 |
| 2. TB Buccaneers | 7 | 8 | 0 |
| 3. Atlanta Falcons | 6 | 9 | 0 |
| 4. Carolina Panthers | 5 | 10 | 0 |

Sunday, Dec. 29

Green Bay Packers vs. Detroit Lions, 1 p.m.
Chicago Bears vs. Minnesota Vikings, 1 p.m.



Coming off a loss to Iron Mountain last Monday, Coach Cody Kangas was looking to see how his squad would respond Friday, the results were not what he was hoping for. Back on the court, the Emeralds played host to the Gwin Modellers. Up by one at the end of the first quarter (9-8), Gwin pushed their advantage to 22-17 at the half. The Emeralds rallied in the third, but couldn't close the gap trailing by nine points when the period came to an end. With just two in the books in the final period by Manistique, Gwin went on to defeat Manistique 48-32. Stats for the game were not available at press time. Pictured from top to bottom are, Schlyer Andersen, Joey Hoholik, and Mark Block. Additional photos may be viewed at www.mstpioneertribune.com.



Big Bay girls hit the court

KINROSS — Following a delayed start to the season, the Big Bay de Noc girls' basketball team hit the court and pulled off a win on the road over Maplewood Baptist Thursday night.

Off a three point bucket by Meagan Yonker, two from the paint from Alix Bleu, and a pair form the line by Katelyn DeKeyser, the Bears controlled a seven to two lead at the end of the first quarter of their new season on their way to a 44-28 victory.

Bleu led the effort finishing with 16 points that included two, three-point baskets on the night.

Yonkers added 14 points, seven in the first half and seven in the second half of play.

With Bleu and Yonkers torching the nets, Piper Jones controlled the boards, hauling in 11 rebounds.

In addition to Bleu and Yonker, Camryn Pederson, Gracyann Durrance, Katelyn DeKeyser all finished with four points and Piper Jones added two points.

Back on the court Friday night, the Bears (1-1) were mauled by the Mid-Penninsula Wolverines 56-9.

Big Bay 7 14 7 13 — 44
Maplewood 2 10 6 10 — 28

After the holiday break, the Bears will host Grand Marais Jan. 7, which is also Parents Night.

2019-20 Black Bear Girls Basketball

| DAY | DATE | OPPONENT | PLACE | TIME |
|---------|------------|-----------------------------|-----------------|---------|
| Thurs | Dec. 19 | Maplewood Baptist | Kinross | 6 pm |
| Fri | Dec. 20 | Mid-Penninsula | Mid-Pen | 6 pm |
| Tues | Jan. 7 | Grand Marais (Pt Night) | HOME | 5:30 pm |
| Thurs | Jan. 9 | Superior Central | HOME | 6 pm |
| Tues | Jan. 14 | Engadine | Engadine | 6 pm |
| Thurs | Jan. 16 | Maplewood Baptist | HOME | 5:30 pm |
| Mon | Jan. 20 | Ojibwe Charter | Brimley | 5:30 pm |
| Tues | Jan. 21 | Hannahville | HOME | 5:30 pm |
| Thurs | Jan. 23 | Munising Baptist | Munising | 6:30 pm |
| Tues | Jan. 28 | Grand Marais | Grand Marais | 5:30 pm |
| Fri | Jan. 31 | Beaver Island | Beaver Island | 5:30 pm |
| Sat | Feb. 1 | Beaver Island | Beaver Island | 10 am |
| Wed | Feb. 5 | Hannahville | Hannahville | 5:30 pm |
| Thurs | Feb. 6 | Ojibwe Charter (Homecoming) | HOME | 5:30 pm |
| Fri | Feb. 14 | Mackinac Island | Mackinac Island | 5:30 pm |
| Sat | Feb. 15 | Mackinac Island | Mackinac Island | 10 am |
| Tues | Feb. 18 | Mid-Penninsula | HOME | 6 pm |
| Fri/Sat | Feb. 21-22 | NLL Tournament | | |

Emerald wrestlers hit the road

BARK RIVER — The Manistique wrestling team traveled to Bark River Wednesday, returning with a 36-30 win over Gwin and a 48-30 loss to their host.

After racking up points by forfeit by Jena Osterhout, Tony Williams, James Schroeder, Jake Berry, and Isaac Brewster, Manistique got their first "W" when Tyler Greene pinned Komor Roberts of Gwin in 47 seconds, sealing the victory by the Emeralds.

Losing by pin were Austin Mischel,

who lost to Xander Luoma in 3:31; Josiah Gilroy, losing to Doug Larson in 3:01; Kirk Slater lost to Tyler MacMillan in:16; Griffin Snider lost to Levi Dupras in :53; and Jayden Endsley lost to Colton Berglund in 1:01.

With forfeit wins by Kirk Slater, Tony Williams, and James Schroeder, the Emeralds jumped out front when Jake Berry won by pin in 3:21 over Devon Kurz.

Isaac Brewster followed that up with a win by pin over Quinten Timler in seven seconds.

From there Bark River dominated the mat with a string of pins. Jena Osterhout lost by pin in 3:39 to Josh Riley. Austin Mischel lost by pin to Daniel Dani in :44. Tyler Greene lost to Clayton Eikhorn in 3:37. Josiah Gilroy was pinned in 3:43 by Drew Allgeyer. Griffin Snider was pinned in :39 by Hal Burton; and Jayden Endsley was pinned in :18 by Austin Kleiman.

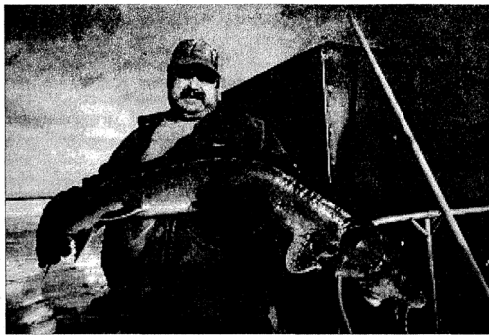
Next up for the Emerald grapplers is the Munising Holiday Invitational Jan. 28.

Find us on **SmugMug**

Not every sports photo we take can be included in the weekly edition of the Pioneer Tribune. All the sports pictures from the events we attend can be "viewed" and purchased here.
Stop by and take a look. <http://mstpioneertribune.smugmug.com/Sports-Photos>

| | | | |
|---|---|---|---|
| <p>Ben Franklin "Our Variety Shows" 906-341-5911 • 239 S. Cedar St., Manistique, MI 49854</p> | <p>Superior State Agency 202 Deer St., Manistique, MI (906) 341-4907</p> | <p>Manistique Oil Company 216 Deer Street, Manistique, MI 49854 (906) 341-2919</p> | <p>THE MAVERICK Classic Country WTRQ 1490 AM 1501 Deer St., Manistique, MI 49854 (906) 341-1490 www.radioresultsnetwork.com</p> |
| <p>ACE HOHOLIK'S Inc. 145 River St., Manistique, MI 49854 (906) 341-5612</p> | <p>Grover Real Estate Serving Michigan's Central Upper Peninsula Give us a call for all your real estate needs...906.341.2131 www.groverrealestate.com</p> | <p>Jack's FRESH MARKET CAFE • GROCERIES • MEAT • PRODUCE DELI and BAKERY Fresh Pastas Daily 735 E. Lakeshore Dr., Manistique, MI (906) 341-8070</p> | <p>Old Homestead Construction Specializing in New Construction and Remodeling RICK LAUX, Carpenter 3969 JJ Road • Garden, MI • (906) 644-2594 • (906) 630-5265 Mobile www.bakerconstructioninc.com</p> |
| <p>THE FLOWER SHOP at Ben Franklin 239 S. Cedar St., Manistique, MI 49854 906-341-8165 • 877-341-8165 www.flowersinmanistique.com</p> | <p>Carrier Braza's Heating & Refrigeration Custom made indoor weather 183 River St., Manistique, MI 49854 (906) 341-2279 • braza000@comcast.net</p> | <p>SCHOOLCRAFT MEMORIAL HOSPITAL www.scmh.org</p> | <p>Wajaus James Barker Construction, Inc. 770 E. Lakeshore Dr., Manistique, MI 49854 (906) 341-3333</p> |
| <p>mBank 130 S. Cedar St. • Manistique, MI 49854 (906) 341-8401 • www.bankmBank.com</p> | <p>Peoples STORE 239 S. Cedar St., Manistique, MI 49854 (906) 341-2779</p> | <p>THOMPSON VETERINARY CLINIC, P.C. 440 Chippewa Ave., Manistique, MI (906) 341-2813</p> | <p>Mini Mart Featuring Nick's Fresh Meats • Home made Sausage • Choice Meats 6504 00.25 Rd., Garden, MI 906-644-2743</p> |
| <p>Zephyr FUEL 906 341-5152 100 Chippewa Ave., Manistique, MI 49854</p> | <p>CARMEUSE 15W County Road 432 • Gulliver, MI 49840 906.283.3456</p> | <p>STATE SAVINGS BANK In Manistique, Main Branch and Westside Branch Gulliver 1 CURS (906) 341-4600 • www.statesavingsbank.com</p> | |

Photo courtesy DNR
The lake sturgeon season on Black Lake, in Cheboygan County, begins at 8 a.m. Saturday, Feb. 1. The total 2020 season allocation on Black Lake is seven lake sturgeon. Participating anglers must register for the season, and anglers age 17 or older must have a valid Michigan fishing license.



Black Lake sturgeon to open

LANSING — Eager for the chance to catch one of Michigan's most unique fish? The wait will soon be over! The lake sturgeon season on Black Lake, in Cheboygan County, begins at 8 a.m. Saturday, Feb. 1, so make sure your license and registration are in order. Registration is required to participate in this season. The total 2020 season allocation on Black Lake is seven lake sturgeon. However, to reduce the risk of exceeding this limit, officials will close the season when one of two scenarios occurs: -The sixth fish is harvested. -Five fish have been harvested at the end of any fishing day. Daily season fishing hours are 8

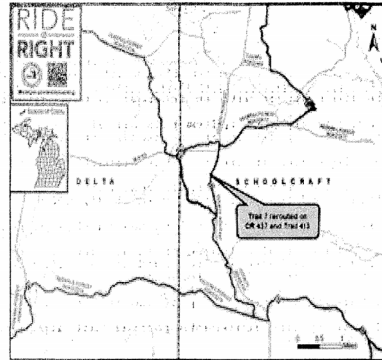
a.m. to 2 p.m. The season will either end at 2 p.m. Wednesday, Feb. 5, or when one of the above scenarios is met, at which point DNR personnel on the ice will immediately notify anglers to stop fishing for lake sturgeon. Participating anglers must register for the season, and anglers age 17 or older must have a valid Michigan fishing license. Early registration will be held at the DNR Onaway Field Station (approximately 5 miles north of Onaway on Route 211) from 2 to 7 p.m. Friday, Jan. 31. Anglers can pick up the required fishing identification flags and learn more about season logistics and lake sturgeon populations.

Anglers are highly encouraged to take part in the early registration Friday, but those unable to do so may register the next day at the registration trailer at Zolner Road ending on Black Lake. Morning registration begins at 7 a.m. each day of the season. Any angler who successfully takes a lake sturgeon must contact an on-ice DNR employee and register the fish at the Zolner Road trailer registration site on Black Lake. Registration may include an examination of the fish's internal organs and removal of a piece of fin tissue for DNA analysis and aging. For more information, contact Tim Cwalinski, 989-732-3541, ext. 5072.

Sections of snowmobile trail closed in Eastern UP

A bridge washout and excessive water covering a trail are forcing the temporary closure of two snowmobile trail segments in the eastern Upper Peninsula.

These trail segments will be closed until further notice. In Schoolcraft County, north of Indian Lake, major water holes over a section of the UP 7 Trail is closed, with a reroute available. Snowmobilers are being rerouted down the UP 413 Trail to Schoolcraft County Road 447 (Thunder Lake Road) to its connection back to UP 7 Trail. The reroute covers approximately 2.5 miles.



In Chippewa County, north of Paradise, a section of the UP 452 Trail that spans the Shell Lake River is closed. Footings of a bridge there were washed out with high water. Michigan Department of Natural Resources trail staff has been exploring potential reroutes, but no good alternatives are available to keep this section of the looped trail open. A dead-end trail will be groomed to the Whitefish Point area. Snowmobilers are reminded to ride with caution, watching for trail hazards, including low-hanging tree

limbs and downed trees. For more information on snowmobile safety, visit Michigan.gov/RideRight. For the latest information on DNR trail and other facility closures, visit Michigan.gov/DNRClosures. Find more information on snowmobiling in Michigan at Michigan.gov/Snowmobiling.

Visit us on Facebook
www.Facebook.com/PioneerTribune

Well, as you read this just take a minute to remember that winter is now officially here so this means the days have now started to get longer and we are now officially on our way to summer. Of course it may take us a while to get there. And needless to say there may be a few snow days and a few cold days before we get there, but we are on our way. As you read this week's article we will be in the week of Christmas heading towards a New Year, can you believe it and recall all that took place during 2019. As some of you know this is the first Christmas in as long as I can remember that the Walker's personal Santa Clause is no longer with us. In all the years growing up and later going up home for Christmas my brother Timmy was our personal Santa. You will recall that Timmy was a special needs person that felt it was his calling on Christmas to read the name on every package and hand them out. It did not matter how many of us were up home with their kids and how long it took Timmy, it was just a part of the Walker's Christmas tradition. Sitting here recalling all the Christmas's past I would give anything to be back there once again with my dad sitting in his recliner in the corner where his recliner always was. Mom sitting on the couch with all the grandkids sitting around on the floor just waiting for Uncle Timmy to read their name on a package and have it passed through all those sitting around laughing and having a wonderful family

Christmas. I just wish that same attitude of love and family time could be shared with the youth of today. I could still tell you some of the gifts I received growing up because we usually got one [in like singular] present and all the other gifts we got usually were some clothes that we needed. This is why there was a standing rule as my kids were growing up that clothes were not really a present but a necessity. That is unless the clothes were camo and came from Bass Pro. The other thing that has changed 100 percent is the work you did on a Christmas tree back in the Stone Age when I was growing up. If you wonder why someone my age has a short fuse and can have nightmares when dosing off in their recliner you can almost bet he is thinking back when you had to hang a zillion ice cycles on a Christmas tree one at a time. We started on the end of each branch and one at a time worked our way towards the center of the tree. This project each year was enough to drive a normal Yooper crazy so you can just imagine how it affected me. Maybe this is why one of the best things that happened after Christmas was when they collected all the Christmas trees in town and piled them up in a big field and had a big

bonfire just to get even with them for all the pain you went through. This is one of the reasons I always told Wife in my perfect house there would be a closet in the corner of the family room with a big lazy Susan on it where you could place your Christmas tree and then have it hooked up with a remote control to bring the tree into the room all decorated and ready to go each year when it was needed. All this is usually figured out by someone that has too much time on their hands. The other one project I am working on if I can get one of those space age vacuum cleaners that run by themselves is to have them come up with a snow blower that works the same way. Of course when this happens I will have to turn my recliner around so I can run it up and down the driveway while looking out the big picture window and eating Christmas cookies. When all these bright ideas are perfected the only thing that will be in good shape will be my thumb from running all the remote controls. Hopefully by next Christmas we will be taking orders for our self-vacuuming snow blower. Have a Merry Christmas with family and friends from this old fossil.

Fish Report

Ret. Sgt. John Walker

HERE'S MY CARD Find the right person for the job right here!

BARBER SHOP Dave's Hometown Barber Shop
• Hair Cuts \$10
• Senior Cuts \$9
• Straight Razor Shaves \$10
• In-Home Appointments
• Walk-Ins Welcome
(810) 287-8948
330 Deer Street, Manistique, MI 49854

DOORS Delta Door Co
GARAGE DOORS & DOOR OPENERS
RESIDENTIAL & COMMERCIAL
Serving the U.P. and Northern Wisconsin
Dennis Ford
906-241-5357 dennis@deltdoorco.com

ELECTRONIC EQUIPMENT Manistique Radio Center
Your Electronic Variety Store
TCL TVs and Sound Bars in Stock!
We also offer used Audio/Video equipment for sale!
Personal Service AND Help after the Sale!
Hours: Mon-Fri 9-5 • Sat 9-3
216 South Cedar St., Manistique, MI 49854
906.341.5851

REAL ESTATE Putting the Perfect Home at Your Fingertips
Call or visit us online today to customize your search by price, features and location!
Grover Real Estate www.groverrealestate.com

FLORAL THE FLOWER SHOP
at Ben Franklin
Florals for all occasions!
(989) 341-9580 • (989) 341-1165
www.flowersinmanistique.com

INSURANCE Klein Agency
AAA Insurance
AAA Michigan
2403 Ludington Street
Escanaba, MI 49829
(906) 789-9305
Fax: (906) 789-9343
Desyria (Desay) Klein, LUTCF
desyria@kainagency.com
Theresa Klein
tklein@kainagency.com
Chris Godfrey
cgodfrey@kainagency.com

INSURANCE Amy Braun
amy@savingsagency.com
www.savingsagency.com
866.884.5922
906.341.5522
Fax: 906.241.3454

PHARMACY Putvin's Health Mart PHARMACY
211 S. Cedar St. Manistique
(989) 341-4444 • 1-800-841-3649
Mon-Fri 9 am to 7 pm • Sat 10 am to 5 pm • Sun 9 am to 2 pm

Delivering Our Very Best At Christmas time & All Year
Extra, extra big thanks to all of our readers and advertisers! We really appreciate your continued support.
We'd like to take a moment to wish everyone a very happy holiday season and a prosperous New Year. May 2020 bring plenty of good news for you and yours.
Pioneer Tribune Your Hometown Newspaper
In Print, Online & Mobile
906.341.5200
www.pioneertribune.com

PLUMBING HOHLIK ENTERPRISES INC.
FOR ALL YOUR:
• Heating • Plumbing
• Cooling • Electrical
135 Chippewa Ave., Manistique
(989) 341-5683 • 1-800-729-8147

PLUMBING Paul's Plumbing & Appliance
Licensed and Insured State Mechanical Contractor
Amana, Whitehall, Heating, Air Conditioning, Water, Gas, Sewer, Drainage
152 River St. • Manistique
1-800-618-6164 or 986-341-5636
pauls_plumbing
HOURS: Mon thru Fri 8am to 4:30pm

FABRIC 100% COTTON Quality Quilt Fabric
We carry quality fabrics and quilting supplies for all your quilting and crafting needs.
Ben Franklin Our Variety Show
229 S. Cedar St. • Manistique, MI
(906) 341-5911

TUXEDO tuxedo RENTAL
Peoples STORE
OPEN: Monday-Friday 9 am to 5 pm • Saturday 9 am to 4 pm
(906) 341-6773 • 229 S. Cedar St. • Manistique, MI 49854

**NOTICE OF SHOW CAUSE HEARING AND JUDICIAL FORECLOSURE HEARING
NON-PAYMENT OF PROPERTY TAXES**

On March 1, 2019 real estate with unpaid 2017 and/or prior years property taxes was forfeited to the Schoolcraft County Treasurer pursuant to the General Property Tax Act, Public Act 206 of 1893, as amended.

The Schoolcraft County Treasurer is acting as the Foreclosing Governmental Unit in proceedings to foreclose on this property for unpaid property taxes.

There are two hearings scheduled to finalize the foreclosure process. This publication is intended to provide additional notice to parties of interest in these parcels as to the nature, time, and location of these hearings.
A SHOW CAUSE HEARING is scheduled for 9:00 AM - 12:00 PM, January 9th, 2020, at Treasurer's Office, 300 Walnut St, Room 169, Manistique, MI 49854.

Any person with an interest in the property forfeited to the County Treasurer may appear at the show cause hearing and show cause why absolute title to that property should not vest in the Foreclosing Governmental Unit.

A JUDICIAL FORECLOSURE HEARING is scheduled for 10:30 AM, February 6th, 2020, at SCHOOLCRAFT COUNTY COURTHOUSE, CIRCUIT COURTROOM, 300 WALNUT ST, MANISTIQUE, MI 49854.

At this hearing the Foreclosing Governmental Unit shall ask that the court enter a judgment foreclosing the property as requested in the petition for foreclosure. A person claiming an interest in a parcel of property set forth in the petition for foreclosure, who desires to contest that petition, must file written objections with the clerk of the circuit court and serve those objections on the Schoolcraft County Treasurer, the Foreclosing Governmental Unit. The docket number of the petition is 19-5364-GZ.

If you are a person with an interest in property being foreclosed:

You have the right to redeem this parcel from the foreclosure process by payment of all forfeited unpaid taxes, interest, penalties, and fees prior to the expiration of the redemption period. You should contact the Schoolcraft County Treasurer for the amount required to redeem.

You may lose your interest in the property as a result of the foreclosure proceeding;

The title to the property shall vest absolutely in the Foreclosing Governmental Unit unless all forfeited unpaid delinquent taxes, interest, penalties, and fees are paid by March 31, 2020.

All existing interests in oil or gas in this property shall be extinguished except the following:

i. The interests of a lessee or an assignee of an interest of a lessee under an oil or gas lease in effect as to that property or any part of that property if the lease was recorded in the office of the register of deeds in the county in which the property is located before the date of filing the petition for judicial foreclosure.

ii. Interests preserved as provided in section 1(3) of 1963 PA 42, MCL 554.291.

PLEASE NOTE:

The following list represents parties that appear to have title, lien, or other apparent rights to the parcels being foreclosed by the Foreclosing Governmental Unit.

This notice is required to be given by law, even if the party no longer claims or desires an interest if it appears they hold any undischarged, apparent, or potential title or lien right to the property.

Listing of a party does NOT necessarily indicate they are the owner of a parcel, or they are liable for the property taxes.

This list is NOT an offering of property for sale. These parcels are NOT being sold, auctioned, or otherwise made available by virtue of this notice.

There is no procedure for purchasing these parcels from the Foreclosing Governmental Unit at this point in the foreclosure proceedings. Those parcels that are foreclosed and not redeemed may become available at public auction on or after July of 2020. These parcels remain the property of their current owner until redemption rights have expired. No party should make any attempt to inspect or enter upon these parcels assuming them to be for sale until the final list of foreclosed parcels is determined and offered at auction in summer, 2020. Most of these parcels will be redeemed from foreclosure. Entering upon them or contacting current property owners may constitute trespassing or undesired solicitation and may subject the offender to criminal prosecution. The street address of the parcels listed is based on local records and is not guaranteed to be the actual location of the property.

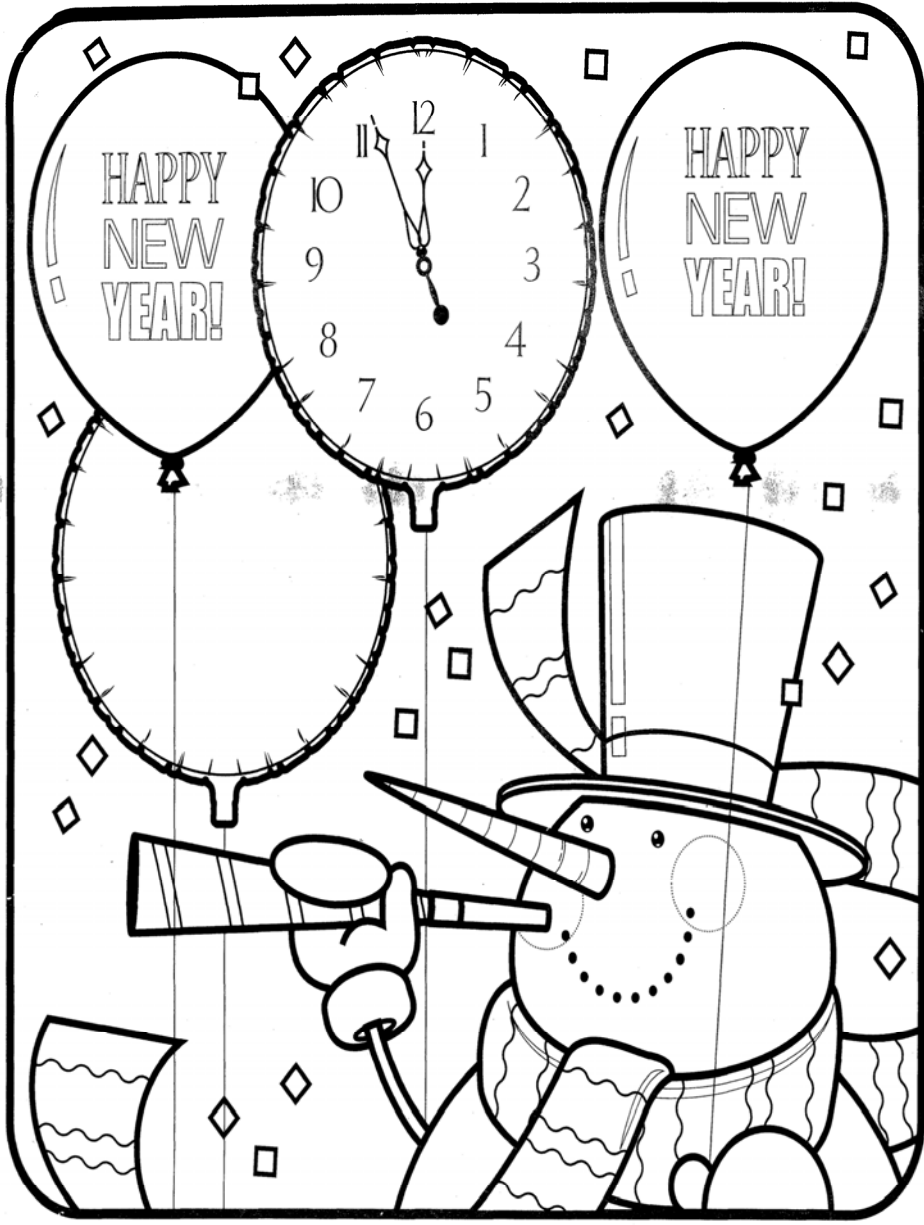
The amount due listed indicates the balance which was due as of forfeiture on March 1, 2019. The current amount required to redeem must be obtained from the Schoolcraft County Treasurer, as additions, penalties, fees, and interest have accrued since forfeiture.

| NAME | PARCEL ID | AMOUNT | NAME | PARCEL ID | AMOUNT |
|--------------------------------------|-------------|-----------|---------------------------------|-------------|-----------|
| ADAIR ASSET MANAGEMENT/ U S BANK | 05170020800 | \$2425.15 | HALEY, MRS JEFFREY C | 00723302100 | \$1858.85 |
| ADAMS, JOHN B | 00335901700 | \$650.16 | HILLSDALE COUNTY NATIONAL BANK | 00610802400 | \$344.63 |
| ADAMS, MRS JOHN B | 00335901700 | \$650.16 | HOBOLIK, GEORGE F | 00513303000 | \$1670.16 |
| ADAMS, MRS RICHARD J | 00335901700 | \$650.16 | HOBOLIK, SUZANNE M | 00513303000 | \$1670.16 |
| ADAMS, MRS ROBERT F | 00335901700 | \$650.16 | HOLLINGSHEAD, ROBIN | 00513301100 | \$2495.63 |
| ADAMS, MRS RONALD J | 00335901700 | \$650.16 | HOLLINGSHEAD, STEVE | 00213301100 | \$2495.63 |
| ALDRICH, AMANDA | 05170020800 | \$2425.15 | HOLMBERG, KATHLEEN | 00117001100 | \$391.31 |
| ASSET ACCEPTANCE LLC | 00200301300 | \$1117.84 | HOLMBERG, RAYMOND L | 00117001100 | \$391.31 |
| ASSET ACCEPTANCE LLC | 05120601000 | \$1165.32 | IGNAT, MICHAEL J JR | 00203200500 | \$714.19 |
| BALES, PEGGY | 00240201700 | \$3595.42 | IGNAT, MRS MICHAEL J JR | 00203200500 | \$714.19 |
| BALES, RICHARD | 00240201700 | \$3595.42 | INTERNAL REVENUE SERVICE | 00213301100 | \$2495.63 |
| BARCLAY, BLAKE | 00806400700 | \$506.82 | INTERNAL REVENUE SERVICE | 00807700100 | \$644.96 |
| BELLORE, WILLIAM | 00117001100 | \$391.31 | INTERNAL REVENUE SERVICE | 00863001200 | \$622.69 |
| BERGLUND, CARL | 00450000300 | \$811.80 | INTERNAL REVENUE SERVICE | 05100300300 | \$714.19 |
| BERGLUND, CARL M | 00500402800 | \$849.41 | INTERNAL REVENUE SERVICE | 05121300100 | \$341.27 |
| BERGLUND, CHARLES A | 00450000300 | \$811.80 | INTERNAL REVENUE SERVICE | 05121301600 | \$363.94 |
| BERGLUND, CHARLES A | 00500402800 | \$849.41 | INTERNAL REVENUE SERVICE | 05121301700 | \$363.94 |
| BIGLOW, RONNEY | 00610802400 | \$1344.63 | INTERNAL REVENUE SERVICE | 05121301800 | \$270.02 |
| BIRCH BAY RESORT PARK LTD | 00620301600 | \$4330.73 | INTERNAL REVENUE SERVICE | 05128200100 | \$3771.73 |
| BLOWERS, ANN E | 05170024000 | \$619.45 | INTERNAL REVENUE SERVICE | 05160002510 | \$1499.46 |
| BLOWERS, GEORGE | 05170024000 | \$619.45 | JAGER, ROBERT W JR | 05140501500 | \$1214.06 |
| BODELL, CLYDE | 00723302100 | \$1858.85 | JAGER, ROXANNA A | 05140501500 | \$1214.06 |
| BODELL, MRS CLYDE D | 00723302100 | \$1858.85 | JEAN, MICHALLE MARIE | 00612900150 | \$1143.88 |
| BRAUN, ALLAN | 05170009600 | \$1793.80 | JOHNSON, MICHAEL | 05160007500 | \$1257.34 |
| BRAUN, HELENE M | 05170009600 | \$1793.80 | JOLLY ROGER MOTEL | 00213405900 | \$4204.23 |
| BRAUN, PEGGY | 05170009600 | \$1793.80 | JOLLY ROSE MOTEL | 00213405900 | \$4204.23 |
| BROWN, WILLIAM | 05170009600 | \$1793.80 | KAMAR, PATRICIA | 05134700300 | \$259.86 |
| BROWN, PAULA JEAN | 00807700100 | \$644.96 | KAMAR, PATRICIA | 05134701500 | \$251.43 |
| BUDEK, DOROTHEA A | 00807700100 | \$644.96 | KAMAR, PATRICIA | 05134701900 | \$265.86 |
| BUDEK, JOSEPH J | 00807700100 | \$644.96 | KAMAR, PATRICIA A | 05134700400 | \$251.26 |
| BURNS, JACQUELYN A | 05160002510 | \$1499.46 | KALPEC, EDWARD M | 05158701300 | \$265.89 |
| BURNS, JACQUELYN A | 05121301600 | \$363.94 | KOERNER, JAMES R | 00311500210 | \$478.62 |
| BURNS, JACQUELYN A | 05121301700 | \$363.94 | KOERNER, MICHELLE I | 00311500210 | \$478.62 |
| BURNS, JACQUELYN A | 05121301800 | \$270.02 | KOEBNE, JAMES W SR | 00311403850 | \$395.93 |
| BURNS, ROY D | 05121300100 | \$341.27 | KOPECKY, JANE | 00203401000 | \$1240.82 |
| BURNS, ROY D | 05121301600 | \$363.94 | KORENICH, EDWARD | 00202201400 | \$1806.71 |
| BURNS, ROY D | 05121301700 | \$363.94 | KORENICH, MARY | 00202201400 | \$1806.71 |
| BURNS, ROY D | 05160002510 | \$1499.46 | KORENICH, MICHAEL | 00202201400 | \$1806.71 |
| BURNS, ROY DONALD | 05121301800 | \$270.02 | KORENICH, PHILLIP | 00202201400 | \$1806.71 |
| CALVERT, WALLACE S | 00135103250 | \$516.54 | KORENICH, ROSE | 00202201400 | \$1806.71 |
| CAVALRY PORTFOLIO SERVICES LLC | 00401100820 | \$601.94 | KUMM, LINDA | 00311403850 | \$368.93 |
| CAVALRY PORTFOLIO SERVICES LLC | 00401100820 | \$601.94 | LAWRENCE, DAVID B | 00113504520 | \$151.87 |
| CAVALRY PORTFOLIO SERVICES LLC | 05170009700 | \$1796.09 | LESICA, DEBRA | 05118600200 | \$912.32 |
| CODY, COLLEEN E | 05160007500 | \$1357.34 | LESICA, JAMES | 05118600200 | \$912.32 |
| COUNTY OF SCHOOLCRAFT | 05160007500 | \$1357.34 | LESICA, KATHI | 05118600200 | \$912.32 |
| CROFOOT, DONALD | 00610802400 | \$344.63 | LEUGERS, REBECCA | 00600600400 | \$4776.83 |
| CROFOOT, EAN | 00610802400 | \$344.63 | LEUGERS, ROBERT | 00600600400 | \$4776.83 |
| CROFOOT, THELMA HILLIARD | 00610802400 | \$344.63 | LIMESTONE FEDERAL CREDIT UNION | 00602900500 | \$1330.79 |
| DAVIS, ANNETTE | 05128100200 | \$1069.73 | LIMESTONE FEDERAL CREDIT UNION | 05123006000 | \$3899.09 |
| DEHLER (TRUST), ERNEST | 00822403300 | \$254.35 | LIMESTONE FEDERAL CREDIT UNION | 05160002510 | \$1499.46 |
| DISCOVER BANK | 00113504520 | \$1151.87 | LUMBERT & BALES INC | 00240201900 | \$5032.05 |
| DOBEN, BETTY L | 00117001100 | \$391.31 | LUMBERT, BEN | 00240201700 | \$3595.42 |
| DOYLE, COLLEEN | 00822403300 | \$254.35 | LUMBERT, SHARON | 00240201700 | \$3595.42 |
| DRENT, LARRY | 00200301300 | \$1117.84 | LVNV FUNDING LLC | 00401100820 | \$601.94 |
| DROSSART, PAUL | 00401100820 | \$601.94 | LVNV FUNDING LLC | 00432900700 | \$1796.09 |
| EH INVESTMENTS LLC | 00500403900 | \$4756.16 | LVNV FUNDING LLC | 05118600200 | \$912.32 |
| EH INVESTMENTS LLC | 05109403910 | \$3997.72 | LVNV FUNDING LLC | 05120601000 | \$1165.32 |
| EICHNER, LINDA | 00850005900 | \$1174.04 | LVNV FUNDING LLC | 05170009700 | \$1042.62 |
| EMELIAN (TRUST), HELEN | 05156400900 | \$263.91 | MADDOX, CURTIS | 00203401000 | \$1240.82 |
| EMELIAN (TRUST), HELEN | 05156601200 | \$265.89 | MANISTIQUE FEDERAL CREDIT UNION | 05115502200 | \$1563.81 |
| EMELIAN (TRUST), HELEN | 05156601300 | \$265.89 | MANISTIQUE ICE CO | 05150300100 | \$2154.30 |
| EMELIAN (TRUST), HELEN | 05156601400 | \$265.89 | MANSER, CHRISTOPHER J | 00203401000 | \$1240.82 |
| EMELIAN (TRUST), HELEN | 05156601500 | \$267.94 | MARQUETTE GENERAL HOSPITAL | 00203014000 | \$117.87 |
| EMELIAN (TRUST), HELEN | 05156400900 | \$263.91 | MATHIA, JUDITH | 05101003500 | \$1533.79 |
| EMELIAN (TRUST), PAUL | 05156601200 | \$265.89 | MATHIA, LINDA | 05101003500 | \$1533.79 |
| EMELIAN (TRUST), PAUL | 05156601300 | \$265.89 | MATHIA, MARY L | 05101003500 | \$1533.79 |
| EMELIAN (TRUST), PAUL | 05156601400 | \$265.89 | MBANK | 05109102000 | \$3686.32 |
| EMELIAN (TRUST), PAUL | 05156601500 | \$267.94 | MBANK | 05109102100 | \$1115.06 |
| ERICKSON, SUZETTE | 05158100600 | \$734.46 | MBANK | 05150300100 | \$2154.30 |
| ERICKSON, SUZETTE | 05158100700 | \$270.39 | MCDADE, MICHAEL | 00311402700 | \$1556.96 |
| ERNATTEN, KURT | 00311403850 | \$968.93 | MCGAHAN, CAREN D | 00100100300 | \$740.92 |
| FIRST NATIONAL ACCEPTANCE CO | 05109601600 | \$982.12 | MCGAHAN, JUDY A | 00100100300 | \$740.92 |
| FIRST NATIONAL BANK OF CRYSTAL FALLS | 00821201330 | \$315.81 | MCGAHAN, PAUL D | 05101003000 | \$740.92 |
| FLASKA PROPERTIES LLC | 05128100200 | \$1069.73 | MERCY APOSTOLIC CHURCH | 05128200100 | \$3971.73 |
| FLOYD, ZANE W | 05100300300 | \$9749.94 | MICHIGAN DEPARTMENT OF TREASURY | 00202201400 | \$1806.71 |
| FRANK, ARTHUR SR | 00850005900 | \$1174.04 | MICHIGAN DEPARTMENT OF TREASURY | 00450000300 | \$811.80 |
| GRAVES, MARY K | 05101003000 | \$1163.79 | MICHIGAN DEPARTMENT OF TREASURY | 00500402800 | \$849.41 |
| GOLDEN, PHIL J | 00213405900 | \$4204.23 | MICHIGAN DEPARTMENT OF TREASURY | 05100300300 | \$749.94 |
| GONZALEZ, BONNIE L | 05115502200 | \$1563.81 | MICHIGAN DEPARTMENT OF TREASURY | 05121300100 | \$341.27 |
| GOULD, AMY E | 05106100400 | \$2161.76 | MICHIGAN DEPARTMENT OF TREASURY | 05121301600 | \$363.94 |
| GOULD, RONALD A | 05106100400 | \$2161.76 | MICHIGAN DEPARTMENT OF TREASURY | 05121301700 | \$363.94 |
| GRAVES, HILDA | 00337803100 | \$2655.12 | MICHIGAN DEPARTMENT OF TREASURY | 05121301800 | \$270.02 |
| GRAVES, KURT C | 00337803100 | \$2655.12 | MICHIGAN DEPARTMENT OF TREASURY | 05170002510 | \$1499.46 |
| GRAVES, MRS KURT C | 00337803100 | \$2655.12 | MILLER, DIANE G | 05170016900 | \$395.96 |
| GRAVES, ROBERT | 00337803100 | \$2655.12 | MILLER, DIANE G | 05120601000 | \$1165.32 |
| HALEY, JEFFREY C | 00723302100 | \$1858.85 | MILLER, KENNAN L | 05170016500 | \$2297.09 |

| | | | | | |
|---------------------------------------|-------------|-----------|---|-------------|-----------|
| MUNSON, THOMAS L | 05170020800 | \$2425.15 | SMITH, MYRTLE A | 00863001230 | \$622.69 |
| NADEAU, MICHAEL J | 00349300900 | \$1104.63 | STATE OF MICHIGAN | 05158701330 | \$265.89 |
| NICHOLSON, KEVIN | 05170016900 | \$804.98 | STATE SAVINGS BANK OF MANISTIQUE | 051330303 | \$1670.16 |
| NORMAN, JOSEPH LAWRENCE | 05106101000 | \$1414.58 | STERLING Z INC | 05128102300 | \$498.84 |
| NORMAN, JOSEPH LAWRENCE | 05106101600 | \$350.97 | STEVENS, GARY | 00850005900 | \$1174.04 |
| NORTH COUNTRY BANK & TRUST | 00113504520 | \$1151.87 | STEVENS, HENRY | 00850005900 | \$1174.04 |
| NORTHURFT, AUGUST P | 05131600500 | \$621.07 | STEVENS, JIM | 00850005900 | \$1174.04 |
| OLSON, ERIN E | 05109500800 | \$2108.76 | SUPERIOR STEEL FABRICATION INC | 00723200600 | \$1396.01 |
| PEOPLES STATE BANK OF MUNISING | 00537100610 | \$3065.36 | SUPRAMCO III LLC | 05170031100 | \$3307.36 |
| PEOPLES STATE BANK OF MUNISING | 00337802910 | \$1202.61 | TERRIAN, JODY K | 05109601600 | \$982.05 |
| PEOPLES STATE BANK OF MUNISING | 00337803100 | \$2655.12 | THE STATE SAVINGS BANK OF MANISTIQUE | 00349300900 | \$1104.63 |
| PEOPLES STATE BANK OF MUNISING | 00500403901 | \$4756.16 | THE STATE SAVINGS BANK OF MANISTIQUE | 05106100400 | \$2161.76 |
| PEOPLES STATE BANK OF MUNISING | 00500403910 | \$3097.72 | TOVAR, CHARLES | 05158200700 | \$265.89 |
| RAYMOND L & KATHLEEN HOLMBERG (TRUST) | 00117001100 | \$391.31 | TROKLER, SCOTT G | 05109102000 | \$3686.32 |
| REY, GARY | 00600600400 | \$4776.83 | TROKLER, SCOTT G | 05109102100 | \$1115.06 |
| REY, MRS GARY J | 00600600400 | \$4776.83 | TRZECIAK, ASHLEY | 00337802910 | \$1202.61 |
| REYNOLDS, DENISE | 00213403400 | \$2671.21 | TRZECIAK, CRAIG S | 00337802910 | \$1202.61 |
| REYNOLDS, MICHAEL | 00213403400 | \$2671.21 | TRZECIAK, JOHN | 00337100610 | \$3065.36 |
| RODENHIZER, TRAVIS | 05128101100 | \$613.67 | TRZECIAK, LINDA L | 00337100610 | \$3065.36 |
| RODENHIZER, TRAVIS | 05128101200 | \$1330.33 | TUTTLE, HELEN | 00213405900 | \$4204.23 |
| ROGERS, MYRTLE E | 00850005900 | \$1174.04 | UNIVERSAL FIRE & CASUALTY INSURANCE COMPANY | 05170020800 | \$2425.15 |
| ROSS, MICHAEL SOLOMON | 05128200100 | \$3971.73 | VINCENT, KIRK | 00620900500 | \$1330.79 |
| ROWE, DEBORAH | 05128101100 | \$613.67 | VINCENT, KIRK A | 05120300600 | \$3899.09 |
| ROWE, DEBORAH | 05128101200 | \$1330.33 | VINCENT, TAMMY | 00620900500 | \$1330.79 |
| ROWLETTE, ROSE | 00213405900 | \$4204.23 | VINCENT, TAMMY S | 05120300600 | \$3899.09 |
| SALTER, BRIAN | 00401100820 | \$601.94 | WELLS FARGO BANK MICHIGAN NA | 05101003500 | \$1533.79 |
| SALTER, BRIAN D | 00432900700 | \$1795.09 | WHITE, LINDA ANN | 00213401500 | \$2067.00 |
| SALTER, BRIAN JR | 05170009700 | \$1042.62 | WILLIAMS, JASON | 05118600200 | \$912.32 |
| SANTIL, RAYMOND | 00821201330 | \$315.81 | WILLIAMS, LUCY J | 05134700300 | \$259.86 |
| SCHNURER, JESSIE M | 05100300300 | \$9749.94 | WILLIAMS, LUCY J | 05134700400 | \$251.26 |
| SCHNURER-COLLISON LLC | 05100300300 | \$9749.94 | WILLIAMS, LUCY J | 05134701500 | \$251.43 |
| SMITH, DOUG | 00863001200 | \$622.69 | WILLIAMS, LUCY J | 05134701900 | \$265.86 |
| SMITH, DOUGLAS D | 00807700100 | \$1042.62 | WILLIAMS, MILTON J | 05134700300 | \$259.86 |
| SMITH, EDWARD L | 05109101600 | \$1471.02 | WILLIAMS, MILTON J | 05134700400 | \$251.26 |
| SMITH, EDWARD L | 05109202100 | \$1066.99 | WILLIAMS, MILTON J | 05134701500 | \$251.43 |
| SMITH, EDWARD L | 05170003900 | \$2018.60 | WILLIAMS, MILTON J | 05134701900 | \$265.86 |
| SMITH, EDWARD L | 05170024000 | \$613.67 | WITCZAK, SHAWN M | 00100100500 | \$1789.51 |
| SMITH, KIM M | 00620900500 | \$1330.79 | | | |

No party should make any attempt to inspect or enter upon these parcels assuming them to be for sale. This may constitute trespassing and subject the offender to criminal prosecution. The street address of the parcels listed is based on local records and is not guaranteed to be the actual location of the property.

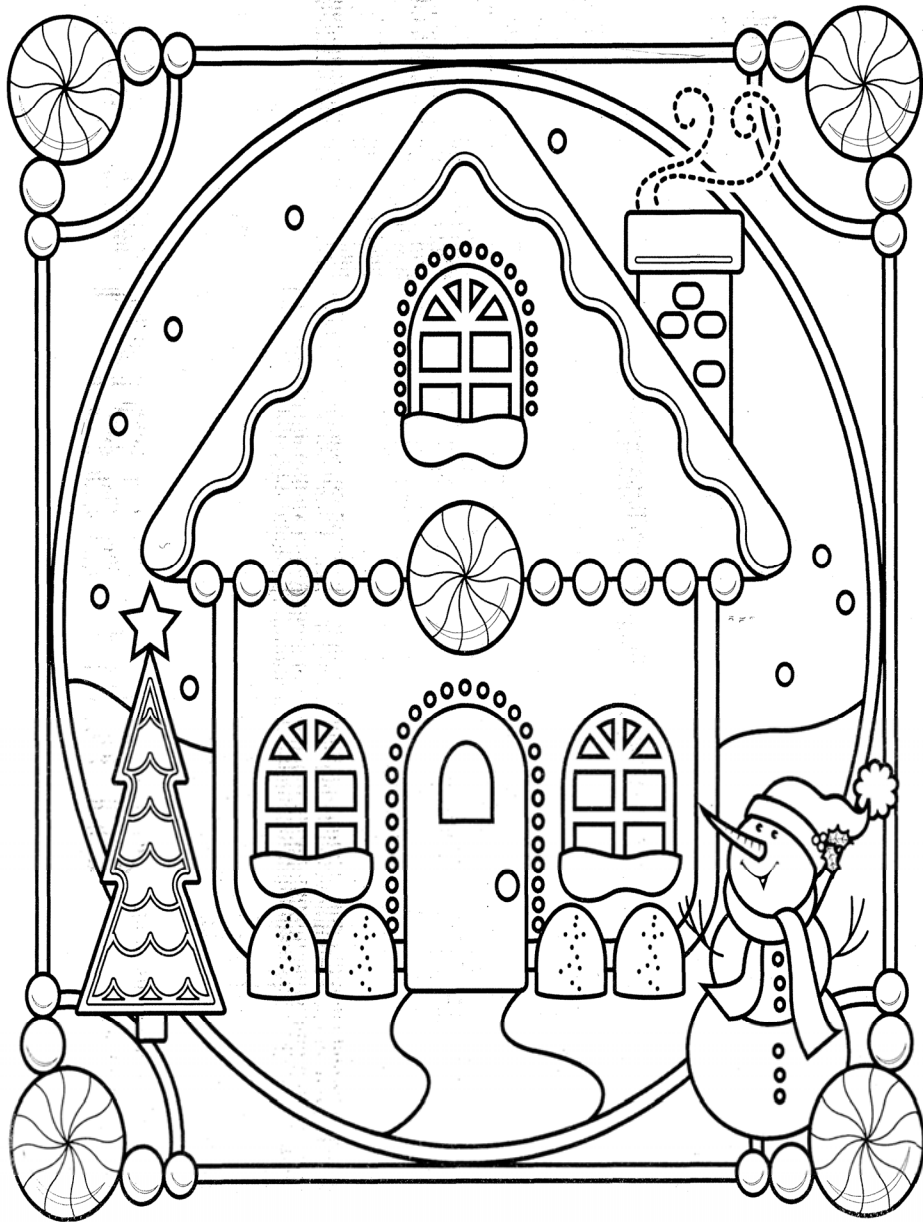
| | | | |
|-------------|--|-------------|---------------------------------|
| 00100100300 | GULLIVER | 05109102100 | 181 N CEDAR ST, MANISTIQUE |
| 00100100500 | 746 N COUNTY RD 432, GULLIVER | 05109202100 | 217 E ELK ST, MANISTIQUE |
| 00113504520 | 3171 M N GULLIVER LAKE RD, GULLIVER | 05109500800 | 462 WALNUT ST, MANISTIQUE |
| 00117001100 | GULLIVER | 05109601600 | 219 LAKE ST, MANISTIQUE |
| 00135103250 | GULLIVER DAM, GULLIVER | 05115502200 | 1019 DEER ST, MANISTIQUE |
| 00200301300 | 7840 HWY M-77, GERMFASK | 05118600200 | 339 SCHOOLCRAFT AVE, MANISTIQUE |
| 00203200500 | 1886 W EDGE ROAD, GERMFASK | 05120300600 | 521 ARBUTUS AVE, MANISTIQUE |
| 00203401000 | 1128 E EDGE ROAD, GERMFASK | 05120601000 | 600 ARBUTUS AVE, MANISTIQUE |
| 00213301100 | 8157 W PINE ST, GERMFASK | 05121300100 | 831 MANISTIQUE AVE, MANISTIQUE |
| 00213401500 | 8252 SHEPPARD RD, GERMFASK | 05121301600 | MICHIGAN AVE, MANISTIQUE |
| 00213403400 | 1163 GREEN ST, GERMFASK | 05121301700 | MICHIGAN AVE, MANISTIQUE |
| 00213405900 | 8007 HWY M-77, GERMFASK | 05121301800 | 831 MANISTIQUE AVE, MANISTIQUE |
| 00240201700 | 8073 HWY M-77, GERMFASK | 05128100200 | 711 DEER ST, MANISTIQUE |
| 00240201900 | 8083 HWY M-77, GERMFASK | 05128101100 | 135 N FIRST ST, MANISTIQUE |
| 00311402700 | 7801 W STATE HWY M-94, MANISTIQUE | 05128101200 | 135 N FIRST ST, MANISTIQUE |
| 00311403850 | 7716 W ISLAND LAKE RD, MANISTIQUE | 05128102300 | 713 DEER ST, MANISTIQUE |
| 00311500210 | W STATE HWY M-94, MANISTIQUE | 05128200100 | 101 N SECOND ST, MANISTIQUE |
| 00335901700 | 9911 N STATE HWY M-94, MANISTIQUE | 05131600500 | 211 N THIRD ST, MANISTIQUE |
| 00337100610 | 8905 N BOOT LAKE RD, MANISTIQUE | 05134700300 | N EIGHTH ST, MANISTIQUE |
| 00337802910 | COUNTY RD 452, MANISTIQUE | 05134700400 | N EIGHTH ST, MANISTIQUE |
| 00337803100 | 8615 N BOOT LAKE RD, MANISTIQUE | 05134701500 | N NINTH ST, MANISTIQUE |
| 00349300900 | 444 N COUNTY RD 441, MANISTIQUE | 05140501500 | 430 N HOUGHTON AVE, MANISTIQUE |
| 00401100820 | 11405 COUNTY ROAD 437, MANISTIQUE | 05150300100 | 422 N FIFTH ST, MANISTIQUE |
| 00432900700 | 11405 COUNTY ROAD 437, MANISTIQUE | 05156400900 | WEST ST, MANISTIQUE |
| 00500402800 | 6256 W US HIGHWAY 2, MANISTIQUE | 05156601200 | OTTER ST, MANISTIQUE |
| 00500403901 | W US HIGHWAY 2, MANISTIQUE | 05156601300 | OTTER ST, MANISTIQUE |
| 00500403910 | 6130 W US HIGHWAY 2, MANISTIQUE | 05156601400 | OTTER ST, MANISTIQUE |
| 00513303000 | 874 N RIVER RD, MANISTIQUE | 05156601500 | OTTER ST, MANISTIQUE |
| 00600600400 | W 2076 COUNTY ROAD 432, GULLIVER | 05158100600 | 515 N MACKINAC AVE, MANISTIQUE |
| 00723200600 | 10701 N M-77, SENEY | 05158100700 | 515 N MACKINAC AVE, MANISTIQUE |
| 00723302100 | 1402 W RAILROAD STREET, SENEY | 05158200700 | N MACKINAC AVE, MANISTIQUE |
| 00806400700 | W US HIGHWAY 2, MANISTIQUE | 05158701300 | N FIRST ST, MANISTIQUE |
| 00807700100 | 8420 W US HIGHWAY 2, MANISTIQUE | 05160002510 | E LAKESHORE DR, MANISTIQUE |
| 00821201330 | S LITTLE HARBOR RD, MANISTIQUE | 05160007500 | 540 WASHINGTON AVE, MANISTIQUE |
| 00822403300 | 3096 S WOODLAND SHORES TRL, MANISTIQUE | 05170003900 | 410 INTAKE PARK RD, MANISTIQUE |
| 00850005900 | 8558 W 4TH ST, MANISTIQUE | 05170009600 | 210 N FIRST ST, MANISTIQUE |
| 00863001200 | MANISTIQUE | 05170009700 | 212 N FIRST ST, MANISTIQUE |
| 05100300300 | 238 S CEDAR ST, MANISTIQUE | 05170016500 | 349 N MAPLE ST, MANISTIQUE |
| 05101003500 | 325 OAK ST, MANISTIQUE | 05170016900 | 345 N MAPLE ST, MANISTIQUE |
| 05106100400 | 127 S MACKINAC AVE, MANISTIQUE | 05170020800 | 302 WESTON AVE, MANISTIQUE |
| 05106101000 | 318 DEER ST, MANISTIQUE | 05170024000 | 101 NEW ELM ST, MANISTIQUE |
| 05106101600 | DEER ST, MANISTIQUE | 05170026100 | 206 N CEDAR ST, MANISTIQUE |
| 05109101600 | 195 N CEDAR ST, MANISTIQUE | 05170031100 | 109 RIVER ST, MANISTIQUE |
| 05109102000 | 181 N CEDAR ST, MANISTIQUE | | |



Holiday FUN & GAMES

December 2019
Special Supplement to
Pioneer Tribune

212 Walnut St., Manistique, MI 49854
906-341-5200 • www.pioneertribune.com



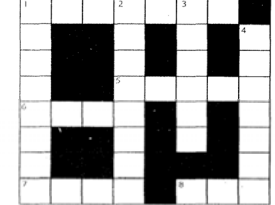
Holiday Feast WORD SEARCH

U G T V W O K Z B D I S G G W R Y A A T
 P H E N G A P M A H C B R E W B G P P E D
 G L O Y D S S I K E T E A G O L T C P L V
 K G A S T U R K E Y E M V G A B T E O D V
 I D D O H T H V U H N H S Y N S P E T R B
 F O D E A O U T E B S R O T O F F K I E L
 P O F S V W E A H O M G O F F R W H I S S A
 T A E E O I N K A G M F Z B P Z Z R R A A
 U E E S S Z U S T Y U Z P P Y B R D B U T R C M
 C S H M S Z T M C A I O C D R Y A E I T R C M
 W D C B B B V S C L F D R E D K G N B M
 Y W P E T G I E H D O T F R A U A C E U E
 R F E Y U I W L L D S R C B N I C K Z I Y
 T F A T U K S L L O R R K L E L C K L S Z P
 S H C O E W O F D E L W T A F Y E P M K
 A N O B I A G P G K N F C A V I K R H A
 P C A N F W K N W V L O A F I K M A S P
 D R E N D B I M P U D D I N G L I Z V T
 E M A R V G E Y Z R N S L S C D S W V P

WORDS

- APPETIZER
- BRISKET
- CAKE
- CASSEROLE
- CHAMPAGNE
- CHEESE
- COCKTAILS
- COOKIES
- CRACKERS
- DOUGHNUTS
- EGGNOG
- GINGERBREAD
- GRAVY
- GREENBEANS
- LATKES
- LOAF
- PASTRY
- PIE
- PUDDING
- ROAST BEEF
- ROLLS
- SEAFOOD
- TURKEY
- WINE

Crossword Puzzle



- ACROSS**
1. Flakes falling
 5. Twelve of something
 6. Not mixed
 7. 365 days
 8. Final part
- DOWN**
1. Slick
 2. One who travels around much
 3. Spout
 4. Dressed warmly
- Answers: 1. Shippy 2. Wanderer 3. Nozzle 4. Bundled Down
 Across: 5. Snowing
 Down: 1. Snowing 2. Wanderer 3. Nozzle 4. Bundled Down

CRYPTO FUN

- Solve the code to discover words related to Christmas. Each number corresponds to a letter. (Hint: 19 = e)
- A. 14 12 21 15 6 19 21 26**
 Clue: Decorative item
- B. 19 24 19 12 13 12 19 19 21**
 Clue: Accepts leaves
- C. 2 14 22 13 3**
 Clue: Branch
- D. 26 8 21 25 19 11**
 Clue: Shiny decoration

Word Scramble

Rearrange the letters to spell something pertaining to Christmas.

GMEANR

□ □ □ □ □ □ □ □

Answer: Manger

Word Scramble

Rearrange the letters to spell something pertaining to winter.

OTYFRS

□ □ □ □ □ □ □ □

Answer: Frosty

SUDOKU

| | | | | | | | |
|---|---|---|---|---|---|---|-----|
| 9 | 3 | 4 | | 6 | | | 5 |
| | 5 | 1 | | | | | |
| | | 7 | | 3 | | | |
| 4 | 3 | 1 | | 5 | 6 | | |
| | | 8 | | 7 | 3 | | |
| 6 | | | 3 | 9 | 4 | 8 | 1 |
| | 4 | 2 | | | 3 | | 1 9 |
| | | | | | | | 4 6 |
| | | 6 | | 5 | | | 7 |

Level: Beginner

Here's How It Works: Sudoku puzzles are formatted as a 9x9 grid, broken down into nine 3x3 boxes. To solve a sudoku, the numbers 1 through 9 must fill each row, column and box. Each number can appear only once in each row, column and box. You can figure out the order in which the numbers will appear by using the numeric clues already provided in the boxes. The more numbers you name, the easier it gets to solve the puzzle!

| | | | | | | | | |
|---|---|---|---|---|---|---|---|---|
| 3 | 1 | 5 | 9 | 8 | 3 | 1 | 5 | 9 |
| 5 | 8 | 2 | 7 | 1 | 2 | 6 | 8 | 4 |
| 6 | 7 | 4 | 8 | 9 | 6 | 2 | 5 | 1 |
| 1 | 8 | 6 | 9 | 4 | 7 | 2 | 3 | 5 |
| 4 | 2 | 3 | 7 | 5 | 6 | 9 | 7 | 1 |
| 8 | 6 | 7 | 3 | 1 | 9 | 4 | 2 | 5 |
| 2 | 5 | 1 | 9 | 4 | 8 | 7 | 3 | 6 |
| 9 | 3 | 4 | 7 | 2 | 6 | 1 | 8 | 5 |

ANSWER

8-Player Football

continued from B1

while the majority of discussion centered on topics expected to receive more specific consideration at MHSAA sport committee meetings this winter.

The decision to alter the playoff selection process for 8-player football makes playoff selection consistent across both formats of the sport. 11-player football will begin using the enhanced strength-of-schedule formula as well in 2020, per Council approval at its spring meeting this past May. The new playoff selection formula places greater weight on the success of a team's opponents and sets playoff divisions during the school classification process in March, instead of after the conclusion of the regular season as done previously in both 11 and 8-player football. Also similarly, teams will not be allowed to opt-up into a larger division in either format. The one difference for 8-player is that points assigned for defeating an opponent will be the same for teams in both divisions; in 11-player, more points are awarded on an escalating scale for defeating teams in larger-school divisions.

The Council also approved the permanent use of a policy for non-traditional draws in basketball and volleyball that has guided the scheduling of postseason play for those sports during the 2018-19 and 2019-20 school years. Non-traditional draws allow games to be played at a school's home or closer neutral site instead of all teams at the same site to alleviate travel distance and time for teams facing long trips during the District and Regional rounds. The policy approved for continuation allows for non-traditional draws to be used for Districts made up of all Upper Peninsula teams, a combination of Upper and Lower Peninsula teams or Districts made up of seven or eight teams from any location; and for geographically-neutral sites to be selected for Regionals that include more than one District located entirely in the Upper Peninsula. For the two District scenarios including Upper Peninsula teams, a traditional draw still may be conducted if all participating teams agree to it.

A number of remaining discussions focused on results from this fall's update meeting survey completed by administrators during the MHSAA's annual presentations across the state. The Council at its spring meeting requested study by staff on a variety of topics - most notably amateur status, out-of-season coaching issues, use of football equipment in out-of-season activities and the MHSAA travel limitation both during the summer and in-season. A number of update survey questions addressed those subjects, and conversations on those topics will continue at the separate sport committee meetings over the next few months in advance of further Council discussion in March and May.

The Council discussed efforts to promote and grow football, and

staff reported on the upcoming Youth Football Summit to be held Jan. 19, 2020, at the MHSAA in partnership with USA Football and the Michigan High School Football Coaches Association. Those efforts, along with the history of use of football equipment out-of-season, are scheduled for further conversation at the MHSAA Football Committee meeting in January.

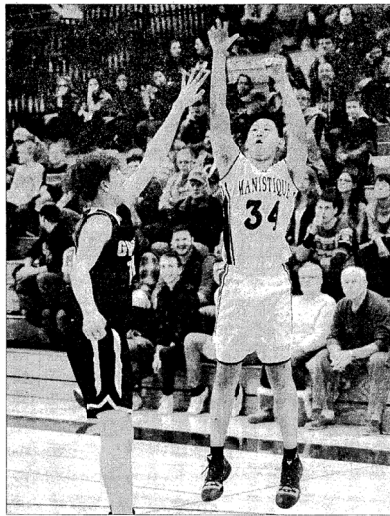
Additionally, MHSAA staff reported on current mental health initiatives - including the Association's rules meeting partnership with the Mental Health Foundation of West Michigan and its "be nice." education program - and on the first meeting of the Sports Medicine Advisory Council. Staff relayed feedback received this fall during the first season under the new sport-specific transfer rule, and also observations from the first-time use of limited District seeding in boys soccer during the recently-completed season. An update also was presented on officials registration and retention.

The fall meeting saw the addition of William McCoy, athletic director of Romulus Summit Academy North, to the 19-person Council. He was appointed to a two-year term. McCoy fills the position formerly held by Courtney Hawkins, athletic director of Flint Beecher High School, whose term ended. Also, Kris Isom, athletic director at Adrian Madison High School, was appointed to a two-year term. She replaces Justin Jennings, who previously served as superintendent for Muskegon Public Schools and vacated his Council appointment after leaving Muskegon for a position in Ohio this summer.

The Council reelected Scott Grimes, assistant superintendent of human services for Grand Haven Area Public Schools, as its president, and Vic Michaels, director of physical education and athletics for the Archdiocese of Detroit, as secretary-treasurer. Clare Middle School principal Steve Newkirk was elected Council vice president.

The Representative Council is the legislative body of the MHSAA. All but five members are elected by member schools. Four members are appointed by the Council to facilitate representation of females and minorities, and the 19th position is occupied by the Superintendent of Public Instruction or designee.

The MHSAA is a private, not-for-profit corporation of voluntary membership by more than 1,500 public and private senior high schools and junior high/middle schools which exists to develop common rules for athletic eligibility and competition. No government funds or tax dollars support the MHSAA, which was the first such association nationally to not accept membership dues or tournament entry fees from schools. Member schools which enforce these rules are permitted to participate in MHSAA tournaments, which attract more than 1.4 million spectators each year.



Joe LeBlanc photos

The Emerald junior varsity hosted Gwin Friday night. At the end of four quarters of play, the Modeltowners defeated the Emeralds 24-54. Pictured in action going clockwise are, Carson Sprader, Nathan Huddleston, Emer Zellar, and Christian Carroll. Additional photos can be viewed at www.mstpioneertribune.srrugmug.com. The squad will travel to Negaunee Nov. 30.



Your Local News
Just the Way You Like It



We're available in whatever format works best for you!

In Print, Online & Mobile

Check out our "UPDATED" online subscription. Read current or archived issues at your convenience on your phone, tablet or computer.



Pioneer Tribune
Your Hometown Newspaper

906.341.5200 • www.pioneertribune.com

LET US MAKE YOUR LIFE A LITTLE EASIER

Residential Pick-up Service is the way to go!

EASY TO HANDLE ROLL-A-CART



- Wheels easily, even on inclines
- Keeps odors in and animals out
- Cleans easily with a garden hose
- Service Options:
Weekly, Bi-monthly and Monthly
- Monthly billing
- Pay ahead as you like:
Prepay 11 months, 12th month FREE!



COMMERCIAL CONTAINER SERVICE



- Rear Load Dumpsters
2-3-4-6 and 8
Yard Capacity

"BEING LOYAL - BUYING LOCAL"

- LOCAL - Utility Customer
- LOCAL - Diesel Fuel Purchased Locally
- LOCAL - Tire Repair Work Purchased Locally
- LOCAL - Senior Center Supporter
- LOCAL - Advertises in "Pioneer Tribune"
- LOCAL - Vehicle Repair Work and parts Purchased Locally
- LOCAL - Manistique High School "All Night" Graduation Party Donor
- LOCAL - Driver is a Local Grocery Shopper & Property Owner
- LOCAL - Supports Schoolcraft Motorized Trails Association
- LOCAL - Member of Schoolcraft County Chamber of Commerce
- LOCAL - Property Owner - City of Manistique/Schoolcraft County Tax Payer



DELTA DISPOSAL

(906) 786-2276 | 1-800-921-0877
1500 3rd Ave North | PO Box 886 | Escanaba, MI 49829

email: deltadisposal@deltadisposal.net

Employees belong to Teamsters Local 406 - Union Shop!

SPORTS APPAREL

Flannel Pants Girls hooded T Crew Sweatshirt

Baseball style T's Sweatpants

SAVE 20% off
Regular Retail Price

Stop in and see what's new!
Manistique Emerald and Big Bay Black Bear selections!

Peoples STORE

239 S. Cedar St., Manistique, MI 49854
OPEN Mon-Friday 9-5 Saturday 9-4
906.341.2779