















### Ice Skaters Prepare For Rink Opening

ISHPEMING, Jan. 16—Residents of Ishpeping are reminded of the opening program at the skating rink Wednesday evening, January 21, when a colorful ice revue will be presented.

### Churches

Grace Episcopal — Holy communion, 8. Sunday school, 9:30. Morning prayer and sermon, 10:30.—The Rev. C. G. Ziegler, rector.

First Methodist—Morning worship, 10. Sermon, "Gather Up the Fragments." Church school, 11:15. Evening service, 7. Sub-district officers, 1:15 Wednesday in the pastor's study.

Pentecostal, National Mine — Services in Sons of St. George hall, Sunday school at 2. Worship service at 3. Prayer meeting at 7:30 Wednesday evening.

Bethany Lutheran — Sunday school teachers' prayer hour, 9:15. Sunday school and Bible classes, 9:30. Morning worship, 10:30.

Trinity Lutheran — Sunday school, 9:30. Public worship, 10:30. Sermon, "True Worshipers."

Salisbury Methodist — Sunday school, 9:30. Public worship, 10:30. Sermon, "True Worshipers."

### Barrymore Greets Daughter



"It's wonderful," sighed John Barrymore, "to have a daughter who looks like Hedy Lamarr," as he greeted Diana Barrymore upon her arrival at Los Angeles to accept a motion picture role.

### Braden Post Meets Next Tuesday Night

ISHPEMING, Jan. 16—To avoid conflict with the band concert, the meeting of Albert V. Braden post, American Legion, slated for Monday, has been postponed until Tuesday evening, Commander O. E. Stolen announced this morning.

### Ishpeping Briefs

A communion service will be held at 11 Sunday morning at the Evangelical Mission church. The Women's Christian Service Society, of the National Mine Methodist church, will meet at 7:30 Wednesday night at the home of Mrs. John Trengemo.

### State Troops To Serve In Emergencies

ISHPEMING, Jan. 16—Michigan state troops are not intended for use on permanent guard duty, but as a mobile force for service in emergencies, Ben Devoe, captain in the organization, told the Ishpeping Rotary club last night.

He emphasized that guard duty, if any should become necessary, would be carried out only until such time as owners of property involved were able to make their own arrangements for protection.

### Weddings

Wearne-Nelson — ISHPEMING, Jan. 16—Mrs. Martha Wearne, Euclid street, and Winfield Nelson, of Green Bay, Wis., will be married Saturday morning at a nuptial high mass in the church of the Annunciation, Green Bay, Wis.

### Sweden Operating New Wind Tunnels

STOCKHOLM—Sweden has just opened its first modern aerodynamic experiment institute with two wind-tunnels of American type for testing models.

### Square Sets Will Win the War

TOPEKA, Kans.—P—Square dancing is making a comeback in America's physical fitness program, Miss Mabel Lee, of Omaha, Neb., assistant regional director in civilian physical training work, says square dancing is a good way to keep in physical trim.

### Sidestepped Death At Pearl Harbor



Ensign R. E. Thomas, Jr., of Rockford, Ill., a 1941 Annapolis graduate, said he literally sidestepped death by running three steps from a bomb which killed four of his mates in the attack on Pearl Harbor.

### New Phase Of China Sea War Opening?

(Continued From Page 1) Allied grand strategy to end the retreat phase of the battle in the Far East. Probably it cannot mean that a major offensive in the China sea zone is yet possible. It does indicate, nevertheless, that Wavell deemed the time ripe for a British stand before Singapore to match MacArthur's stand on Batan peninsula.

### Whodunnit? An Indian And His Bow 'n' Arrow

AP Feature Service Whodunnit? Dun what? we asked. Made the first donut? Well, we answered authoritatively, a historian up on Cape Cod, Henry Ellis, says it all happened when an Indian took a pot shot at a Pilgrim damsel who was cooking up some flat fried cakes.

### No Stakes, No Game Is Pastor's Theory

DURANT, Okla.—P—The Rev. W. T. White believes in direct action in his war on sin. He walked in on a group of his male parishioners while they were having a little game of guessing each other's hole cards with a box of fine candy as the prize.

**Ishpeping Theatre**

SUNDAY-MONDAY-TUESDAY MATINEE SUNDAY AT 2:30

ADVENTURE PILED UPON ADVENTURE!

**UNDERGROUND**

Drama aflame with the power of a two-ton bombshell!

A WARNER BROS. HIT with JEFFREY LYNN

PHILIP DORN • KAAREN VERNE • MONA MARIS • Directed by VINCENT SHERMAN

ALSO: PARAMOUNT NEWS AND LITTLE CESARIO CARTOON

**Butler Theatre**

SUNDAY THRU WEDNESDAY MATINEE SUNDAY AT 2:30

The screen's greatest Technicolor triumph!

HAROLD BELL WRIGHT'S **"THE SHEPHERD OF THE HILLS"**

JOHN WAYNE • BETTY FIELD • HARRY CAREY

Plus: Sojourn in Havana, and Playing the Pied Piper

VARIETY OF ENTERTAINMENT!

**BAND CONCERT**

MON. JAN. 19TH — 8:20 P. M.

RESERVE TICKETS NOW — City Drug Store

**CAKES**

ALMOND PEANUT BUTTER 45c

BANANA FLUFF 40c

PINEAPPLE CRUNCH 29c and 40c

DIVINITY ANGEL FOOD 31c and 49c

APPLE PECAN CUPS, per dozen 30c

**TARTS CREAM PUFFS**

MALTED NUT BANANA

COCOANUT PUMPKIN

**COOKIES OATMEAL**

HERMITS MACAROONS

ALL FRUIT CAKES AT ONE-HALF PRICE

**CORNELIUSON'S**

**RENDEZVOUS**

SATURDAY ART PETERSON AND HIS BAND

SUNDAY PHIL SARVELLO ORCHESTRA

NO COVER OR MINIMUM CHARGE

**RENDEZVOUS**

"Send Over a Case Of Menominee Beer!"

For evenings alone at home . . . for when friends drop in . . . for after work at mealtime . . . for that late lunch . . . for anytime when you're tired of mind or body . . . there's nothing like a refreshing bottle of Menominee Beer.

**Menominee BEER**

H. W. ELSON BOTTLING WKS.

CORNER CEDAR AND PIR TELEPHONE 403 ISHPEMING

### Radio Code To Thwart Spies Set Up

(Continued From Page 1) need not anticipate major changes in existing programs as a result of the code. The National Broadcasting company and the Columbia Broadcasting System indicated in New York that observation of it would not cause cancellation of any of their quiz shows now on the air.

**3 STEPS OUT OF DEBT**

1. Make a list of your obligations. Find out how much it will take to pay them off.
2. See us for a loan to clean up what you owe. You will then have only one monthly payment to meet instead of several.
3. This will enable you to budget your income properly, keep current expenses paid . . . and get out of debt!

Come In Or Phone For a Loan Or For Full Information . . . Today!

**Walter G. Wylie & Co.**

104 Savings Bank Building Phone 119, Marquette Jenks Block—Over Fineman's Phone 86, Ishpeping

**ISHPEMING**

Showing Today Matinee at 2:30

DOUBLE FEATURE

PRICES: 22c - 11c

EVE. SHOWS: 6:30-9:00

MISSING TEN DAYS

FIRST SHOW — 6:30

**BUTLER TONIGHT**

LEW AYRES In "DR. KILDARE'S WEDDING DAY"

**DANCE TONIGHT**

**DOUBLE V INN**

Intersection US-41 and M-95

MUSIC BY WE THREE

BEER — WINE — LIQUOR

**E. A. JOHNSON CO.**

Boneless Lamb Rolls . . . Lb. 32c

Yearling Leg of Lamb . . . Lb. 27c

Beef Liver . . . Lb. 25c

Pork Loin, rib end, 3 4-lb. . . Lb. 26c

Cubed Beef Steak . . . Lb. 32c

Flour, Pillsbury's Best . . . 2 1/2-lb. bag \$1.15

49-lb. bag \$2.20

Bakewell . . . 2 1/2-lb. bag \$9.20

49-lb. bag \$1.49

Sno-Sheen Cake Flour . . . Lge. pkg. 21c

Borden's Milk . . . 3 tall cans 29c

Coffey Caraja . . . 2 lbs. 49c

White House . . . 2 lbs. 57c

Ritz Crackers . . . 1-lb. pkg. 23c

Shredded Wheat . . . 2 pks. 25c

Excel Salted Crackers . . . 3-lb. pkg. 19c

Excel Graham . . . 3-lb. pkg. 21c

Sandwich Cookies . . . 2 lbs. 57c

Fig Bars . . . 2 lbs. 29c

Country Garden Cream Style Golden Bantam Corn—Cut Wax or Green Beans . . . 2 No. 2 cans 25c

Sweet Pea Brand Peaches . . . LH Tin 21c

Sincerity Kieffer Peas in Heavy Syrup . . . 1 Lge. can 22c

Ridge Peas . . . 2 No. 1 cans 21c

Campbell's Tomato Soup or Juice . . . 3 tins 25c

Wagner Cooking or Eating Apples . . . 4 lbs. 25c

Seedless Grapefruit . . . 6 for 29c

California Sweet Oranges . . . Doz. 25c, 39c

Small . . . Doz. 29c

California Fresh Carrots . . . Beh. 8c

Fresh Green Beans . . . Lb. 17c

Fresh Juicy Lima . . . Doz. 29c

Seminole Tissue . . . 4 rolls 25c

Ammonia . . . Qt. bl. 15c

Hi-Power Bleach . . . 3-qt. bl. 27c

Mrs. Josephine Culbertson Suggests AUTHORITY

**Van Camp's PORK and BEAN SUPPER**

Ask for recipe folder.

3-1-lb. cans 25c

WASH CLOTHES WITHOUT BLEACHING

**OXYDOL**

Lge. Giant 23c 64c

**P&G** for 28c

with NAPHTHA SOAP

\$100 AMOUNT FOR LIFE

6 WEEKLY CONTESTS

**IVORY SOAP**

Med. Lge. 4 for 3 for 25c 21c

\*NEW SURE-MIX Lb. 24c

THE NEW GRANULATED SOAP

**DUZ**

24c



Male Chorus Plans Defense Stamp Benefit

NEGAUNEE, Jan. 16—The first city wide enterprise for promotion of the sale of defense stamps will be conducted next week when purchasers will be given a ticket to a benefit concert to be held Sunday afternoon, January 25, by the Negaunee Male chorus, under the auspices of the American Legion.

The concert will be held in the auditorium of the high school, and purchasers of defense stamps in the amount of 50 cents and over will be given a ticket if the purchase is made at stores to be designated by the sponsoring organization.

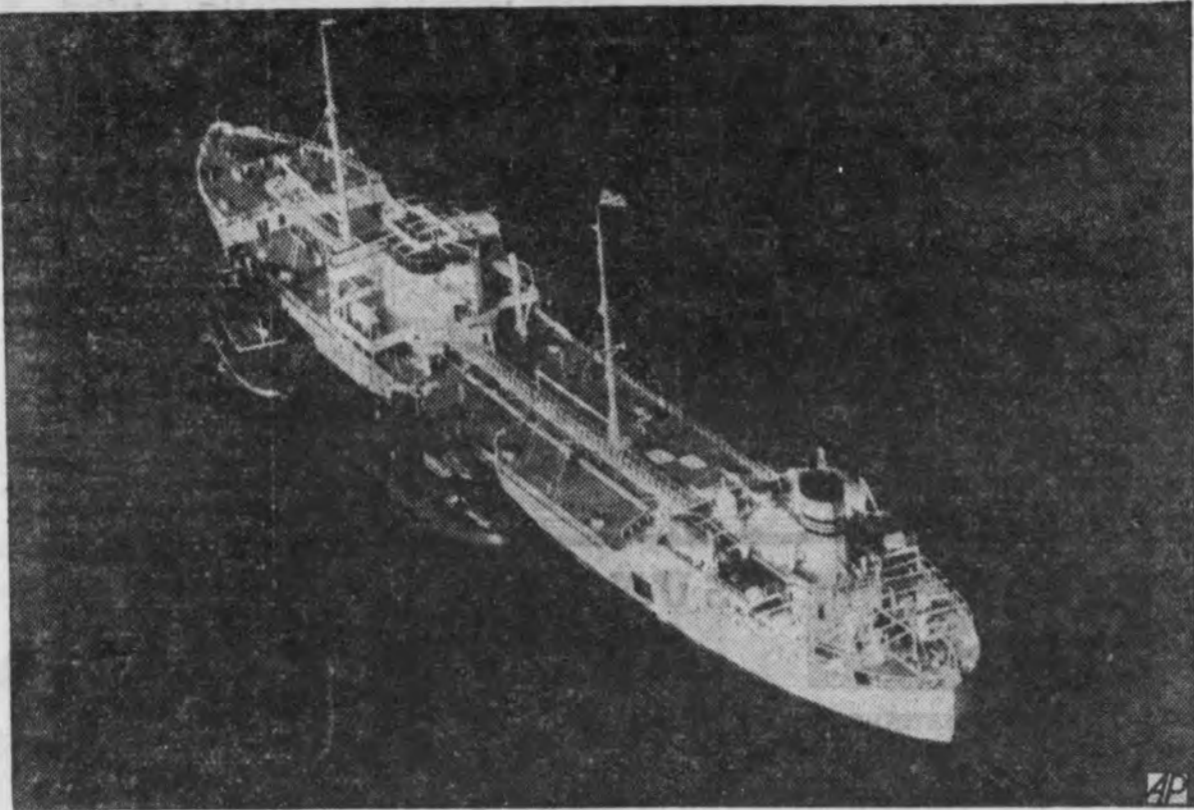
Officers Installed By Pythian Sisters

ISHPEMING, Jan. 16—The Pythian Sisters have installed officers for 1942. Mrs. Myrtle Sundberg was the installing officer, assisted by Mrs. Elsie Collycott and Mrs. Mable Vivian.

Philippine Countryside Being Looted

Atlantic seaboard remained unchanged. Continuing air movements made yesterday by the Coast Guard, it said that a second Allied tanker had been observed in the Long Island area and was assumed to have been torpedoed.

Torpedoed Off Long Island



The Panamanian tanker Norness (above) was torpedoed by a submarine 60 miles south of Montauk Point, Long Island, the closest approach yet made to the east coast by enemy warcraft, the third naval district announced.

get practice. No major Japanese force has appeared in these waters since Dec. 7.

Even traces of the enemy are hard to find. The results, therefore, have not been spectacular. It's not that kind of mission. The fleet's specific job is to search the sea with guns and planes by day and night, maintaining long range protection for Pearl Harbor and the rest of Hawaii and for the American west coast.

Reports Watch Action Reporters and photographers were permitted to come along for the first time during this war, traveling aboard heavy cruisers.

Early in the morning we have ringside seats at a stirring air show. Through powerful binoculars that bring an aircraft carrier right up before our eyes, we see fighters and bombers and torpedo planes take off, one by one.

Fighting or not, there is something to keep everybody busy around the clock beginning with "general quarters" before dawn when every man must be at his battle station.

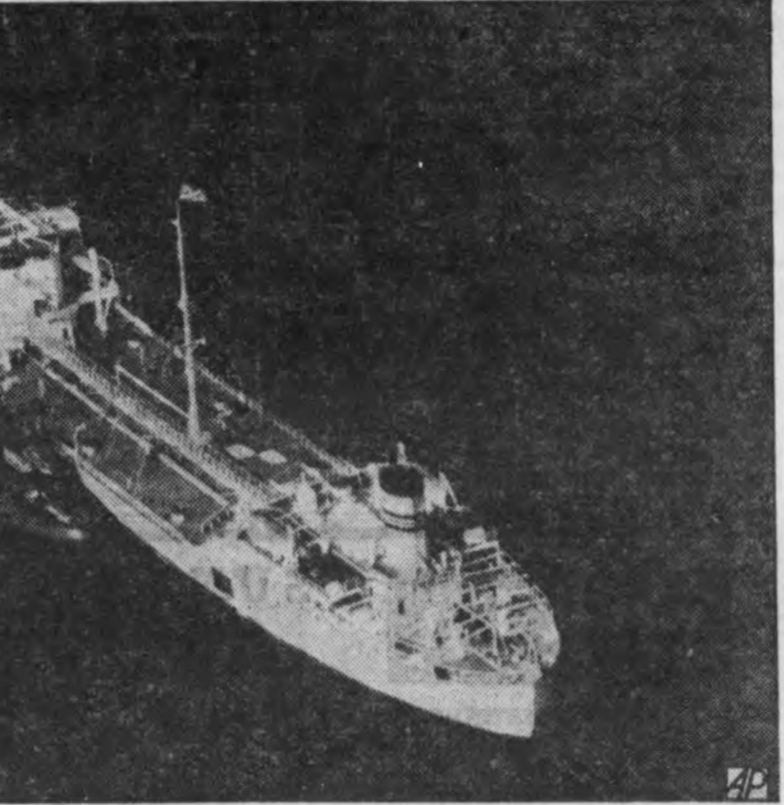
Scattered among our sunbanned crew are scores of men whose ships were torpedoed from under them at Pearl Harbor, in the Japanese attack of Dec. 7.

Gunners' Fingers Itchy We were finishing luncheon the other day when our guns roared without warning and we hit the deck like cats.

Planes, Vessels Hunt Raiders The situation on the east coast created considerable conjecture as to the steps the Army and Navy might be taking to clear adjacent waters of German U-boats.

Pacific Fleet Hunts Japs (By Tom Yarbrough) WITH THE UNITED STATES PACIFIC FLEET, Jan. 16—P—Somewhere in mid-Pacific this deadly force of warships and planes has patrolled hundreds of thousands of square miles the last few days, almost entirely without incident.

Torpedoed Off Long Island



The Panamanian tanker Norness (above) was torpedoed by a submarine 60 miles south of Montauk Point, Long Island, the closest approach yet made to the east coast by enemy warcraft, the third naval district announced.

Location Of Vessel Unknown Meanwhile, the mystery concerning the whereabouts of the Coimbra crewmen was heightened by the absence of official information as to the location of the rescue vessel nearly 36 hours after the tanker was known to have been hit and left—like the Norness—a useless, slowly sinking hulk and a menace to navigation.

Maritime authorities, and particularly marine insurance men, came forward with an opinion as to the reason for two such attacks as those on the Norness and the Coimbra so close to land and so close to the world's largest harbor.

It was their opinion a raider had been dispatched to carry out the attacks principally for their nuisance value and to force upward the cost of marine insurance and the pay to crewmen and thereby add materially to the general cost of American shipping.

United Front Against Axis Nears Reality

LONDON, Jan. 16—P—General Sir Alan Fleming Hartley, chief of the northern command in India, was named commander-in-chief in India tonight, succeeding General Sir Archibald P. Wavell, recently appointed Allied commander in the southwest Pacific.

Movie Star On Missing Air Transport Captain Wayne Williams, who began flying in 1928, was piloting the big ship with Morgan A. Gillette as co-pilot and Alice Getz as hostess.

HE WAS FIRST Because he built the first astronomical telescope, Galileo was the first person to see the mountains and craters of our moon, the four moons of Jupiter, and Venus as a crescent.

KILLED BY TRAIN METAMORA, Mich., Jan. 16—P—Arthur Thomas, 61, of Metamora, was killed instantly in a truck-train collision at a crossing south of Metamora today.

Shakeup In Churchill Cabinet Near LONDON, Jan. 16—P—A drastic shakeup in the Churchill government with heads falling in the war and colonial offices because of setbacks in the Orient appeared in the making tonight.

Allied Tanker Sunk; Crew's Fate Unknown

today, some 24 hours after the Coast Guard made it known. Time of the attack, unofficially, was placed at about 9:30 a. m. (EST) yesterday, approximately 32 hours after the Norness shivered at the impact of three carefully aimed torpedoes and went down by the stern, leaving 50 feet of her prow sticking out of the water.

A day of confusion in official sources followed the Coast Guard's announcement. Officials of the New York office, Third Naval district, declined to confirm the report and then ordered the Coast Guard and other naval sources of further information.

In Washington, the Navy department said last night it had no knowledge of the attack, but today an official Washington announcement said the confusion was due to a mixup in naval communications.

United Front Against Axis Nears Reality (Continued From Page 1) to reach an agreement on Hemisphere collaboration after fully exploring existing problems.

These U. S. demands apparently were all that will be presented to the conference, High officials pointed out that the United States, as the victim of aggression, was leaving the initiative for the stronger measures up to her sister nations.

Argentine Weakening Informed quarters professed to see indications in these statements that Argentina was weakening.

Early establishment of a pan-American anti-subversive committee with a permanent executive headquarters in Washington; enactment of legislation in the Americas to safeguard communications, including foreign-dominated air lines; re-creation of the inter-American neutrality commission as a committee on juridical problems to sit in Rio de Janeiro; elimination of all clandestine radio receiving and sending stations; and a provision to curtail the activities of suspected Axis nationals holding dual citizenships.

Search for Parties Enroute Captain Wayne Williams, who began flying in 1928, was piloting the big ship with Morgan A. Gillette as co-pilot and Alice Getz as hostess.

W. W. Baker, station manager at Boulder City, Colo., led a searching party toward the scene. TWA prepared to send another party from Los Angeles.

Prospects of a high cabinet post for Sir Stafford Cripps were enhanced by today's foreign office announcement that he would return to England soon.

Tickets for Legion 'Tork' Dinner Limited

NEGAUNEE, Jan. 16—The mid-winter tour dinner to be given here in honor of visiting officers of the American Legion will be sponsored by the John H. Mitchell post, American Legion, at 6:30 Friday evening, January 23, in the Legion clubrooms.

The number of tickets is limited, only 40 being allocated for Negaunee Legionnaires.

The deadline for purchasing tickets has been set for Tuesday evening. Tickets may be obtained from any member of the committee, which is composed of Oral LaCombe, Jr., John P. Collins, George Russell, Guy Scanlon and John McCalliffe.

Eleven Slain In County In Wisconsin

(Continued From Page 1) ty of some 22,000 population mounted tonight to 11. Those who died in the strange mass killings were: Thomas Spietel, 30; his wife, 29; Joanne Spietel, 11; Cleo Spietel, 9; Jean Spietel, 7; Garry Spietel, 3; a baby of the Spietel family, two months; Mrs. Arthur Petan, 29; George Petan, 10; Neil Petan, 6; Sylvia Petan, 3.

Gills told Tierney that after trying to call the Spietel home by telephone for the last 24 hours he went with others to their nearby residence. They saw bodies on the floor as they looked through the windows and notified the sheriff's office immediately.

Dead For Two Days They found the baby in the crib, three girls and the boy in bed and the wife also in her bed. Spietel's body was found on the floor.

Tierney said that all except the husband had been shot twice with a high powered rifle. There was one bullet hole through the husband's head, he asserted.

Tierney said that inspection by physicians determined that the family had been dead for two days. Information obtained from neighbors revealed they had not been seen around the house or farm for the same period of time.

Aussies Deal Heavy Blow In Malay Battle

(Continued From Page 1) Singapore was meantime shot down. "The use by the British command of the term "large force" caused interest in London, but authoritative persons there remained silent as to whether air reinforcements had reached the western Pacific.

The British line across southern Malaya is now only 60 miles long and it was pointed out here in Singapore that the defenders thus had more men per mile than formerly and now were able to send strong patrols into enemy territory.

The Australians went into action after careful preparation, their positions having been selected by reconnaissance extending back some weeks. They had trained and lived in the jungle for months; some in peacetime were loggers in the

jungles of northern Queensland. Their commander, Major General Gordon Bennett, was one of the phantom captives claimed by the Japanese long ago.

They Know Jap Tricks In Australia, Prime Minister Curtin announced receipt of this message from General Bennett: "The troops are eager for a fight; I trust the enemy will soon realize I'm alive."

To an official Australian correspondent, the general gave this word for the world: "My men are going in with their chins up. They know as I know that the task in front of them is hard, but they don't fear and they'll do it. They are up against an enemy they despise and hate and they know every trick he has tried."

"The Japs are getting the hardest blows they have had in this war to date and there are lots more coming to them. Every move they make from now on is one which will be countered by Australians who can outmarch, outfight and outwit them."

"Hang on we must and hang on we will!"

Pause... Go refreshed

You'll welcome ice-cold Coca-Cola just as often and as surely as thirst comes. You taste its quality, the quality of genuine goodness. Ice-cold Coca-Cola gives you the taste that charms and never cloy. You get the feel of complete refreshment, buoyant refreshment. Thirst asks nothing more.

BOTTLED UNDER AUTHORITY OF THE COCA-COLA COMPANY BY H. W. ELSON BOTTLING WORKS CORNER CEDAR & FIR STS. ISHPEMING, MICHIGAN TELEPHONE 493

They Know Jap Tricks In Australia, Prime Minister Curtin announced receipt of this message from General Bennett: "The troops are eager for a fight; I trust the enemy will soon realize I'm alive."

Advertisement for Thomas Bros. featuring Mrs. Josephine Culbertson and Van Camp's Pork and Bean Supper. Includes a list of products and prices: PORK & BEANS, 2 lge. cans . . . 35c; VEGETABLE SOUP, 3 cans . . . 17c; FRESH CARROTS, 2 bchs. . . 15c; GRAPEFRUIT (good size), 6 for . . . 25c; SWEET ORANGES, extra large, doz. 49c; PORK & BEANS, large can, 2 for . . . 23c; CALUMET BAKING POWDER, can . 21c; SHORTENING, Swift's Jewel, 3 lbs. 49c; AMERICAN CHEESE, lb. . . . 32c; CHICKENS, lb. . . . 32c; BEEF ROAST, lb. . . . 32c; PORK ROAST, Loins, whole or half, lb. . . . 26c; SPARE RIBS; nice and small, lb. . . 21c; HAMBURGER, 2 lbs. . . . 39c; LAMB SHOULDER, lb. . . . 28c

HAZE'S MARKET advertisement listing various food items and prices: BUTTER . . . 2 lbs. 77c | EGGS . . . 2 doz. 75c; LEAN CHUCK ROAST . . . Lb. 25c | LEAN ROUND STEAK . . . Lb. 29c; PORK CHOPS, end cuts . . . Lb. 25c | BACON . . . 1/2-lb. pkg. 15c; LITTLE PORK LOINS, Whole or Rib End . . . Lb. 25c; LEAN RIB ROAST, Boneless . . . Lb. 28c; GLOVERBLOOM ROASTING CHICKENS . . . Lb. 32c; DILL PICKLES, Yacht Club brand . . . 2 1/2-lb. can 19c; TOMATO JUICE . . . 3—16-oz. cans 25c; YACHT CLUB COFFEE 2 lbs. 47c; COGOANUT LONG SHRED Lb. pkg. 28c; SARDINES 3 cans 20c; BAKING COCOA . . . 2-lb. box 25c | HERSHEY COCOA . . . Lb. can 20c; KELLOGG'S CORN FLAKES . . . 2 pkgs. 17c; MATCHES . . . Cartons of 6 boxes 23c; DAISY SODA CRACKERS . . . 2-lb. box 19c; PEANUT BUTTER . . . 24-oz. jar 31c; CATSUP . . . 2—14-oz. btl. 25c; CORN OR PEAS . . . 2—20-oz. cans 23c; TOMATOES . . . 2—20-oz. cans 25c; BEER AND WINE TO TAKE OUT













