



Alma Bundy of Manistique had her hands full in front as the quads, Aaron, Sarah, Joshua when her grandson Hugh brought a set a Jenny, Rachel and Hannah kept great- quadruplets from St. Louis, Mo. to visit. The four grandmother busy.

Medicare may pay for care in Canada and Mexico

By Ed Dwyer
Acting District Manager

If you're a Medicare beneficiary traveling outside the United States and its territories

Guests

Recent summer visitors at the Howard and Rena Pelletier home were Dale McEachern of Westland, MI, Melvin Gauthier of Holland, MI, Jack and Connie Eade of Laurel, MD, Dave and Sally LaHew, Decatur, IL, Danny LaFoille and family, Laurel, MD and Doug LaFoille and family from Upper Marlboro, MD.

(including Puerto Rico, the U.S. Virgin Islands, Guam, American Samoa, and the Northern Mariana Islands.) and require medical services, there are certain things you should know. Generally, Medicare does not pay for hospital or medical services outside the U.S. However, there are three exceptions.

Medicare will pay for your care in qualified Canadian or Mexican hospitals if:

- You are in the United States
- when an emergency occurs, and a Canadian or Mexican hospital is closer to, or substantially more accessible from, the site of the emergency than the nearest United States hospital that can provide the emergency services you need.
- You live in the United States and a Canadian or Mexican hospital is closer to, or substantially more accessible from, your home than the nearest United States hospital that can provide the care you need, regardless of

whether an emergency exists, and without regard to where the illness or injury occurs.

You are in Canada traveling by the most direct route between Alaska and another state when an emergency occurs, and a Canadian hospital is closer to, or substantially more accessible from, the site of the emergency than the nearest United States hospital that can provide the emergency services you need.

If you are planning to travel outside the United States, you

may want to buy special short-term health insurance for foreign travel. If you have other health insurance in addition to Medicare, check to see if health care in a foreign country is covered under your policy.

The Escanaba Social Security office is located at 2015 1st Avenue North and is open Monday through Friday from 9 a.m. to 4:30 p.m. The local number is 786-9615 and the national toll free number is 1-800-772-1213.

Corrections director visits continued

Continued from Page 1A

sent course, the prisoner population, including prisoners in the community residential program, is projected to increase from 38,782 at year-end '94 to 40,488 by year-end '95.

EDC continued

Continued from Page 4A

...Rod Weber was nominated to the position of secretary on the EDC Executive Board.

Bourdo made motion to accept the nomination, which was seconded by Hickey. The motion passed unanimously.

...Lenart Nygren was welcomed

"If the present sentencing patterns continue, the state will have to significantly increase resources for prison construction and operation during the next three years. The cost of constructing 3,200 prison beds would be \$132 million

and the cost to annually operate that number of additional beds would be \$56.3 million.

"Michigan imprisons significantly more of its citizens than most other states. In fact, Michigan has the highest incarceration rate of any northern industrial state. According to figures from the Criminal Justice Institute and U.S. Census Bureau, Michigan's incarceration rate per 100,000 people is 364. By comparison, the rate in Illinois is 250, in Ohio it's 324, Pennsylvania's rate is 194, and in Massachusetts the incarceration rate is 182.

"Michigan's prisons are increasingly being used like most states use their less expensive county jails...for short-time offenders. Since 1984, the number of people sentenced to Michigan prisons for less than one-year has more than tripled."

If Marcia Claus, Gulliver, will stop at the Pioneer-Tribune office she will receive a free theatre ticket for Cinema 1.

Schoolcraft Memorial Hospital
Administration Office
500 Main Street
Manistique, Michigan
Phone: 906-341-2163

Satellite Clinic
September 1993 Schedule
for
Visiting Specialists:

Dr. Eppinga	Wednesday, September 1
Oncology	Tuesday, September 7
Dr. LeGalley	Tuesday, September 14
Dr. Eppinga	Wednesday, September 15
Dr. Mering	Thursday, September 23
Dr. Stein	Friday, September 24

For an appointment, see your physician or call Theresa at the Manistique Medical-Dental Center.

PHONE: 341-2153

We'll Flood You With Protection.

Your home or business insurance policy probably does not cover flood loss which accounts for approximately 75 percent of all property damage caused by natural disaster. Complete your important property insurance protection with flood insurance from Auto-Owners. Contact us today.

Auto-Owners Insurance
Life Home Car Business
The No Problem People



Superior State Agency

150 Deer St. • John Lindroth • 906-341-6907

WE'RE YOUR
MORE-THAN-ONE-COMPANY
AGENT

NOTICE OF POTENTIAL UNPLANNED POWER OUTAGE

TO ALL ELECTRICAL CUSTOMERS OF EDISON SAULT ELECTRIC CO. LIVING IN THE TOWNS OF CURTIS, ENGADINE, GOULD CITY, GULLIVER AND THE CITY OF MANISTIQUE

Due to necessary replacement of transmission poles on electrical system between Engadine and Manistique, there is a possibility of unplanned service interruptions to Edison Sault Electric Company customers beginning August 25 through October 1.

CUSTOMERS AFFECTED:

All electrical customers of Edison Sault Electric Company living in the towns of Curtis, Engadine, Gulliver, Gould City and the City of Manistique.

TIME AND DATE:

Daylight Hours, Monday through Friday, from 7:00 a.m. to 5:00 p.m. beginning Wednesday, August 25, continuing through October 1, 1993.

During this construction period there are no planned outages scheduled; however all customers using electrically sensitive equipment should take adequate precautions and measures during this construction time period.

Water is Power



EDISON SAULT ELECTRIC COMPANY

Serving Since 1973

725 E. Portage Ave. / Sault Ste. Marie, MI 49783

Planning a
Meeting?
Wedding Reception?
Class Reunion?
Shower?
Anniversary Party?
Holiday Get-Together?

Our function rooms can hold up to 250 people. We do the clean-up, cooking and worrying! All you have to do is call 341-6911, tell us what you want, and when you want it. We'll take it from there. Enjoy the fun of your party and leave the work to us.

906-341-6911



On East US 2
Manistique, Michigan

NOTICE TO ELECTORS OF THE CITY OF MANISTIQUE OF INTENT TO ISSUE GENERAL OBLIGATION BONDS PAYABLE FROM TAX INCREMENT REVENUES OF THE DOWNTOWN DEVELOPMENT AUTHORITY OF THE CITY OF MANISTIQUE AND OF RIGHT OF REFERENDUM RELATING THERETO

PLEASE TAKE NOTICE that the City Council of the City of Manistique intends to authorize the issuance and sale of Downtown Development Bonds pursuant to Act 197, Michigan Public Acts of 1957, as amended, in the principal amount of not to exceed \$1,000,000, for the purpose of paying part of the costs of acquiring and constructing the projects described in the Development Plan and Tax Increment Financing Plan of the Downtown Development Authority of the City of Manistique (the "Authority").

Said bonds will mature in annual installments not to exceed thirty (30) in numbers, with interest rates to be determined at public sale, but in no event to exceed such rates as may be permitted by law on the unpaid balance from time to time remaining outstanding on said bonds.

SOURCE OF PAYMENT OF BONDS

THE PRINCIPAL OF AND INTEREST ON SAID GENERAL OBLIGATION BONDS shall be payable primarily from the tax increment revenues derived from the Development Area of the Authority received by the City from the Authority.

In addition, the full faith, credit and resources of the City shall be irrevocably pledged to the payment of said bonds, and in case of insufficiency of the tax increment revenue payments for the payment of the principal of and interest on the bonds, the City shall be obligated to pay the same as a first budget obligation from its general funds or from any taxes which it may levy within applicable constitutional, statutory, or charter limitations.

RIGHT OF REFERENDUM

THE GENERAL OBLIGATION BONDS WILL BE ISSUED WITHOUT A VOTE OF THE ELECTORS UNLESS A PETITION REQUESTING AN ELECTION ON THE QUESTION OF ISSUING THE BONDS, SIGNED BY NOT LESS THAN 10%, OR 15,000, WHICHEVER IS LESS, OF THE REGISTERED ELECTORS OF THE CITY, IS FILED WITH THE CITY CLERK WITHIN FORTY-FIVE (45) DAYS AFTER PUBLICATION OF THIS NOTICE. If such a petition is filed, the bonds cannot be issued unless approved by the majority vote of the electors of the City voting on the question of their issuance.

THIS NOTICE is given pursuant to the requirements of Section 5 of Act 279, Michigan Public Acts of 1909, as amended.

ADDITIONAL INFORMATION will be furnished at the office of the City Clerk upon request.

Patricia Enckes
City Clerk
City of Manistique

ATTENTION!

FOR YOUR CONVENIENCE!!!



Michigan Gas Company
has opened a new business office at:

331 Deer Street
Manistique, Michigan 49854
(906) 344-8032

New Business Hours
begin August 30
Monday - Friday
12:00 to 4:00 p.m.

Now you may even pay your gas bill
while visiting our new appliance showroom!

Historical society has good summer

By Helen Davenport

Members of the historical society helped with the installation, staining and the staining of the log cabin.

Boy Scouts, their leaders and parents helped with the cleaning of the grounds.

The Manistique Women's Club (furnished refreshments and goodies).

Marie Grover donated pop and chips.

Flower beds were cleaned and trees were planted.

The Schoolcraft County Soil Conservation District helped organize the event.

All in all it was a great day for all concerned and involved.

The Manistique Charities donated funds to improve, restore and renovate the two buildings and grounds, including the brick water tower area.

The historical society is grateful to all who have given so much of themselves and talents as well as monetary help.

This is what makes a community proud of its citizens and their endeavors.

Memberships have increased and the souvenir books are still available at the Advisor office, First Northern Bank and Trust, the chamber of commerce or by calling 241-5174 or 341-5339. They are \$4 each, \$3 if mailed.

Births

Todd and Melinda Peterson of Green Bay, WI, are the parents of a girl, Tea Katherine, born Aug. 17, 1993. The baby weighed 7 pounds 8 ounces.

Maternal grandparents are Ben and Lana Peterson of Fairport. Paternal grandparents are Ron and Helen Peterson of Isabella.

Maternal great-grandparents are Sid and Bev Lucas of Garden and Bete Peterson of Fairport.

Paternal great-grandmother is Della Harbick of Manistique.

Mr. and Mrs. Patrick Nord are the parents of twins born Aug. 22, 1993. Rachel Elisabeth weighed 5 pounds 9 ounces and Brittany Alice weighed 5 pounds 4 ounces. Each one was 19 inches long.

Maternal grandparents are Mr. and Mrs. Larry Schurer of Flint.

Maternal great-grandparents are Mr. and Mrs. Neely Schurner of Gulliver.

Kevin and Tina Barnes of Dover, DE are the parents of a girl, Chantal Rose, born Aug. 13, 1993 at Schoolcraft Memorial Hospital. The baby weighed 7 pounds 11 ounces and was 22 inches long.

Kathy and David Paul are the parents of a boy, Jacob Fredric, born Aug. 13, 1993 at Schoolcraft Memorial Hospital. The baby weighed 7 pounds 14 ounces and was 19 1/2 inches long.

Nicole and Jamie Smith are the parents of a girl, Teara Lyn Smith, born Aug. 12, 1993 at Schoolcraft Memorial Hospital. The baby weighed 6 pounds 2 ounces and was 21 1/4 inches long.

Marianne and Patrick King are the parents of a boy, Joseph Patrick King, born Aug. 16, 1993 at Schoolcraft Memorial Hospital. The baby weighed 8 pounds 8 ounces and was 19 3/4 inches long.

Pioneer-Tribune Subscriptions make wonderful gifts for any occasion.

Manistique Dental Center announces Expansion

The Manistique Dental Center announces expansion of its treatment facilities at the Manistique Medical-Dental Center at 115 North Lake Street. New equipment is presently being installed to add more treatment rooms and clerical offices. Dr. Dunbar and Dr. Anderson assure their patients there will be no disruption of service or office hours during the expansion process.

In addition to the physical expansion, selection of another professional staff member has been made.

Dr. William R. Gillette, one of the original founders of the Manistique Medical-Dental Center retired from active practice in 1992.

INSURANCE

New Lower Homeowners Rates!

Discounts for:

- Smoke Alarms
- Fire Extinguishers
- Additional Discounts for Non-Smokers!

CALL TODAY FOR A QUICK QUOTE!
341-2525

Serving the Area since 1917

Savings Agency, Inc.

234 South Cedar Street
Manistique, Michigan 49854

At home with Sarah
by Sarah Signall

Crisp vegetables, fresh fruits, new little potatoes - all combinations to make a variety of salads. What a wonderful selection is available right now in the super markets and farmers markets or maybe your own garden. One of my favorite salads is a classic spinach salad with fresh, dark green crisp spinach.

FRESH SPINACH SALAD

1/2 pound fresh spinach leaves (about 10 cups)
1 cup sliced mushrooms
1 medium tomato, cut into wedges
1/4 cup chopped red onion or thin onion slices
4 slices bacon, crisp-cooked and crumbled

1/3 cup seasoned croutons
1 hard cooked egg, sliced for garnish
1/2 cup vinegar and oil dressing (Commercial Dijon Vinaigrette Dressing is excellent, also).

In a large salad bowl, combine spinach, mushrooms, tomato, onion, bacon, and croutons. Add dressing and toss gently. Garnish with egg. Makes 6 side-dish servings.

Another salad that uses bacon and is a real taste treat is Wilded Lettuce. I prefer this salad made with leaf lettuce but it can be made with head lettuce or other salad greens, also.

WILDED LETTUCE

1 large head lettuce (better if at room temperature)
1/2 cup minced green onion
dash pepper

4 slices bacon, diced
1/4 cup vinegar
1 tbl. sugar

Shred lettuce coarsely into a salad bowl. Add onion and pepper. Fry bacon crisp and drain on absorbent paper towel. Add vinegar and sugar to bacon fat and bring to a boil. Pour over lettuce and toss salad well. Sprinkle top with crisp bacon. Makes 4 side-dish servings.

Sarah says A quick and easy way to clean your microwave is: bring 1 cup water with a dash of lemon juice to a boil on high setting. Change setting to low and boil for 3 minutes. Then remove water, thoroughly dry the inside of the microwave and its door. It will be shining clean and the kitchen will smell fresh.

Food for thought Drive with care - life has no spare.

Happy Birthday Sherrie on September 8

Love,
Mom, Jerry & Debbie

Community Coordinated Child Care

We can provide assistance in helping you with child care when your child is mildly ill or if you need to go to work or school. Chicken Soup, a program for parents who are income eligible, can provide FREE care for children up to 12 years of age, by putting a home health aide in your home.

You may obtain more information by calling Community Coordinated Child Care at 1-800-541-KIDS (Toll Free)

Thank You

Thank you for all your help in making "the big move" to Maple Street:

Todd Kangas, Ernie Krumm, Carla Kotchon-Talbot, Diane Stimac, Paula Miller, Marlys and Jim Foster, Glenda Heminger, Keith and Sheila White, Steve Bauman and Pine Tree Quilters (A.K.A. the quilting ladies).

Audrey, Andrea, Michael & Kathy White

A special thanks to Bill the Barber for all of his hard work.

NOTICE

CHILD AND ADULT PROTECTIVE SERVICES

Anyone suspecting that a child is in danger of abuse or neglect or a vulnerable adult is in danger of abuse, neglect or exploitation should call the Schoolcraft County D.S.S. at 341-2114 from 8 a.m. to 5 p.m. Monday - Friday or on after-hours, weekends or holidays call 222-8315 (a toll free number).

Bette Jean Jahn marries Dale Immel

First United Methodist Church was the setting for the marriage of Bette Jean Jahn and Dale Anthony Immel, on Saturday, July 17. The 3 p.m. double ring ceremony was performed by Rev. Ray Wightman. The bride was given in marriage by her brother, David Jahn. The mother of the bride was escorted by Norm Jahn, brother of the bride.

Parents of the bride are Bette Jean and the late Norman B. Jahn of Manistique. The groom is the son of Dale and Treva Immel of Newberry.

Bridesmaids were Mary Grace Velasco of Grand Rapids, Julie Diggins of Fort Dix, NJ, Angie Lavigne of Manistique, July Jahn, sister-in-law of the bride, Barb Bartlett of Trautvik, MI and Beth Brandstrom of St. Ignace. Flower girls were Julianne Jahn and Jennifer Jahn, nieces of the bride.

Best man was Greg Rubick of Newberry. Groomsmen were Tony



Mr. and Mrs. Dale Immel

Immel, brother of the groom of Skandia, Brian Immel, brother of the groom of Sault Ste. Marie, Kurt Jahn, brother of the bride of Las Vegas, Jeff Hard of Lansing and Dale Ward of Iron Mountain. Serving as ushers were Bill Goosberry of Negaunee and Daryl Lombard of Farmington Hills, MI.

Following a reception at Blancy Inn the couple took a wedding trip to Las Vegas. They are making their home in Munising.

The bride is a 1988 graduate of Manistique High School and a 1992 graduate of Michigan State University. She is employed at Superior Central Schools as a physical education and health teacher and coaches the varsity girls basketball team.

The groom is a 1983 graduate of Newberry High School, a graduate of Northern Michigan University and is employed as manager-agent at Superior Insurance Center in Munising.

Distribution slated

The Menominee-Delta-Schoolcraft Community Action Agency USDA Commodities distribution will take place on Sept. 9 and 10 for the Delta, Manistique, and Schoolcraft Counties. Tri-county residents with a yellow (eligibility) card can participate in the food distribution. Commodities available for the distribution are butter, peanut butter, pork and raisins. Quantities may be limited and are given on a first come first serve basis. Participants are asked to bring their own paper bag.

Schedule is as follows:
Garden, Fire Hall, Friday, Sept. 10, 8:30 a.m. - 10 a.m.;
Manistique, VFW Hall, Thursday, Sept. 9, 9:30 a.m. - 1 p.m.;
Germfask, Township Hall, Thursday, Sept. 9, 9 a.m. - 12 p.m.

NOTICE

The Schoolcraft County Zoning Board of Appeals will hold a Public Hearing to consider a Measurement Variance on the following described parcel:

Lots 9, 10, and the Easterly 10' of Lot 11 of Sandberg's Subdivision.

The Public Hearing will be held on Wednesday, September 1, 1993 at 7:00 p.m. at the Schoolcraft County Courthouse.

Further information may be obtained from the Schoolcraft County Zoning Administration, 300 Walnut Street, Room 207, Courthouse, Manistique, MI 49854, or by calling 906-341-2438. Office hours are 8:00 a.m. - 4:00 p.m., Monday through Friday.

Zaul Wood
Zoning Administrator

Norden's FOODLAND

On River Street in Downtown Manistique

OPEN MON-SAT 8 to 9
SUNDAY 9 to 6

NORDEN'S FOODLAND PRICES EFFECTIVE AUGUST 23rd- AUGUST 28th

U.S.D.A. BONELESS BEEF Chuck Roasts or Steaks \$1.58 LB	GOLD'N PLUMP Fryer Leg Qtrs. 39¢ LB	NABISCO Ritz Crackers \$2.29 1 LB OZ BOX
Ground Turkey 68¢ LB	FRESH GROUND Beef Chuck \$1.58 LB	NABISCO Oreo Cookies \$2.39 20 OZ PKGS.
Produce Specials		
CRISP FRESH Celery 59¢ STALK	MICHIGAN Paula Red Apples \$1.19 3 LB BAG	RED Grapefruit \$1.89 5 LB BAG
DEL MONTE Bananas 29¢ LB	NEW CRISP Carrots 59¢ 2 LB BAG	MEDIUM Yellow Onions 99¢ 3 LB BAG
POP SPECIALS		
Coke, Dr. Pepper, Cherry Coke, Sprite & Sunkist Orange (Some flavors Diet not available)		
\$1.67 PLUS DEPOSIT		
Bakery Specials THURSDAY		
Wheat Hamb. Buns Reg. 8/\$1.39 SALE 8/\$1.19		
FRIDAY		
Jelly Rolls Reg. \$1.99 SALE \$1.75		
SATURDAY		
Wheat Bread Reg. \$1.29 / lb. Loaf SALE \$1.09		

Norden's FAST CHECK-OUT SERVICE! BEER A WINE TO GO ICE

FOODLAND

SHOP IN YOUR HOME TOWN, AT YOUR HOME TOWN GROCERY STORE. NO CHANGING OR DIMINISHING. JUST GREAT SERVICE AND ROCK BOTTOM PRICES. Foodland accepts Food Stamps.

DREW OPTICAL

Back To School Special

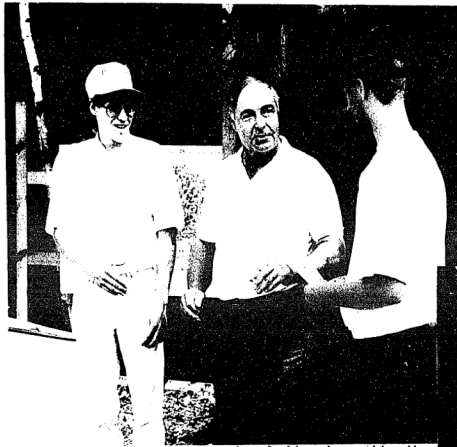
Receive a Pair of Standard Single Vision Glasses for just \$99.95!

MANY STYLES TO CHOOSE FROM!

"Always Affordable. But Never Ordinary"

We participate with Blue Cross Vision Insurance

215 S. Cedar St. • Manistique • Phone: 341-6588



Elvin Hepker of the Michigan State University Schoolcraft County Extension Office presented Chris Benish and Eric Mason a bonus for doing such a great job working at the lab. Benish and Mason worked on the project for the entire summer.



The ribbon is cut signifying the official opening of the Schoolcraft County Environmental Lab. The ribbon was cut by Joel Macheta, who helped with the lab as it was being developed.

Grand Opening Schoolcraft County Environmental Lab



Master of Ceremony, Bob Panek of the U.S. Forest Service welcomed everyone to the lab. Panek served on the FOCUS group, which designed and planned the environmental lab.



The Manistique Area Girl Scouts posted the U.S. flag and the Girl Scouts of America flag to get the open ceremonies started.



County commissioner Jack Hughson waits for organized. Schoolcraft County and the Forest Service were instrumental in the development of the lab. Support for the lab came from many areas.

Check the complete collection of Upper Peninsula books and maps at the Pioneer-Tribune 212 Walnut, Manistique

AUTOMATE YOUR BANKING!!

Almost any ATM or Credit Card can be used in our 24 Hour ATM

But make sure to apply for your STATE SAVINGS BANK ATM CARD

• FAST • CONVENIENT • EASY TO USE

STATE SAVINGS BANK
 MANISTIQUE, MICHIGAN
 Serving You In Three Convenient Locations
 Main Bank - Cedar at Main, Manistique
 Deer at Houghton, Manistique
 Gulliver Branch, Gulliver
 Member FDIC
 Phone 341-2171

NOTICE

On August 12, 1993, Manistique District Ranger, David N. Seesholtz, made a decision to harvest 289 acres of timber in the Jimbo Timber Sale located in Sections 3, 4, 9, and 10 of T43N, R17W, Schoolcraft County Michigan.

The associated Decision Memo is available upon request from the Manistique Ranger District, 499 E. Lake Shore Drive, Manistique, MI 49854.

This decision is subject to appeal pursuant to Forest Service regulations. Appeals must be filed within 45 days from publication of this notice. Notices of Appeals must meet the requirements of 36 CFR 217.9.

13C1

ATTEND THE CHURCH OF YOUR CHOICE

- FIRST BAPTIST CHURCH**
Dr. Jay Martin, Pastor, 315 Walnut Street, Sunday/Early Worship 9 a.m.; 10:00 a.m. Sunday School; Worship Service 11 a.m.; Child care provided, Evening Service at 7 p.m.
- BETHEL BAPTIST CHURCH**
Pastor Jeff Rhodes, 118 East Elk Street, Sunday School 9 a.m.; Sunday services 10 a.m. and 7 p.m. Bible Study and Prayer Wednesday 7 p.m.; Thursday Awana, grades 3-8, 6:30 p.m.
- ISABELLA CONGREGATIONAL CHURCH**
Robert J. King, Pastor, 644-2837. Sunday Worship Service 12:15 p.m.
- CHURCH OF THE REDEEMER PRESBYTERIAN**
Dr. L. Barry Phelps, Main Street, Sunday Morning Worship and Church School 11 a.m. GULLIVER: Morning Worship 9 a.m.
- FIRST UNITED METHODIST CHURCH**
Rev. Raymond Wightman, Pastor. Service times June - Aug: No Sunday School. Sunday Worship with staffed Nursery, 10 a.m.
- UNITED METHODIST CHURCH**
Germfask, Rev. Mary Laub, Pastor. Sunday Service 9 a.m., Bible Study Class 11 a.m. Friday, Grand Menas, Thursday 7 p.m.
- GARDEN CONGREGATIONAL CHURCH**
Robert J. King, Pastor. Sunday worship 9:30 a.m. Wed. Bible Study 7 p.m. Phone 644-2837
- GRACE LUTHERAN CHURCH**
Germfask, Rev. Mark Ertler, Pastor. Church at 8:30 a.m. Sunday.
- GRACE LUTHERAN CHURCH**
Rev. Michael Hellier, 10:30 a.m. Morning Worship at 2 p.m.
- NEW LIFE BAPTIST CHURCH**
Corner Deer (M-94) and Second St., James V. Anderson, Pastor. Sunday School 10 a.m.; Church Service 11 a.m.; Sunday Evening Service 6:00 P.M. Wednesday 7:00 p.m.
- MANISTIQUE CHURCH OF GOD**
(Anderson, Ind.) Sunday Service 10:45 a.m. Senior Citizen Center.
- MAPLE GROVE MENNONITE CHURCH**
Phillip Hoffman, Pastor, Gulliver, MI. Sunday: Sunday School 10 a.m. Church Service 11 a.m. Evening Services Wednesday 7 p.m.
- REORGANIZED CHURCH OF JESUS CHRIST OF LATTER DAY SAINTS**
Germfask, MI. 906-586-5722. Hwy. M-77, come worship with us Sunday. Church School 10 a.m. Worship Service 11:15 a.m. Study Class 7 p.m. Wednesday Prayer Service 7 p.m.
- GERMFASK MENNONITE CHURCH**
Ramon Flores, Pastor 3 mile south of Germfask on M-77. Worship service: 10 a.m. Sunday School: 11 a.m. Bible Study: Wednesday 6:30-8:00 p.m. ages 5-12. Youth Group Tuesday 7:30-9:00 p.m. ages 13 and up. Fellowship Breakfast 1st Sunday of month at 9 a.m. Bible Study Thursday at 7:30 p.m. Our doors are always open.
- REORGANIZED CHURCH OF JESUS CHRIST OF LATTER DAY SAINTS**
Gulliver on US-2. Sunday School 9:30 a.m.-10:30 a.m. Worship Service 10:30 a.m.-11:30 a.m.
- JEHOVAH'S WITNESSES**
Kingdom Hall, 831 Garden Ave. Sunday 10 a.m. Public talk and Watchtower study; Tuesday 7:30 p.m. Bible Study; Thursday 7:30 p.m. Theocratic Ministry School and Service Meeting.
- UNITED HOLINESS CHURCH**
Rev. Connie Hull, Sunday School 10 a.m. Services 11 a.m. Evening service 7 p.m. Wednesday service 7 p.m.
- CHURCHES OF ST. JOHN THE BAPTIST**
Rev. George S. Maki, Parochial Administrator. Rectory Phone: 644-2626. Sacrament of Baptism: By appointment after instructions. Sacrament of Reconciliation: 2-3 p.m. Saturday or by appointment. Sacrament of Anointing: If you know of anyone in the parish who is in need of this sacrament, please call the rectory, Mass Schedule: St. John's 9 a.m. weekdays, 10:30 a.m. Sunday and 7:30 p.m. on Holy Days of Obligation.
- MANISTIQUE CHRISTIAN FELLOWSHIP CHURCH**
Pastor Lew Pizzala, 813 Arbutus Ave. 341-2054, Sundays 10 a.m. and 6:30 p.m., Wednesday 7 p.m. Bible Study and Prayer.
- FAYETTE CONGREGATIONAL CHURCH**
Robert J. King, Pastor. Sunday Service 8:30 a.m. Sunday School 9:45 a.m. Phone: 644-2837
- ST. THOMAS' CATHOLIC CHURCH**
Germfask: Sunday 11 a.m. All year in Grand Marais 9 a.m. on Sunday.
- ST. ALBANS' EPISCOPAL CHURCH**
Oak and Range Streets, 1st and 3rd Sundays, Holy Communion and Sermon, 2nd and 4th Sundays, Morning Prayer and Sermon. Services at 10:30 a.m.
- ST. PAUL'S EPISCOPAL CHURCH**
Nahans, MI. Holy Communion Sunday at 6 p.m.
- ST. FRANCIS DE SALES CATHOLIC CHURCH**
Rev. James Mesapaca, Pastor. Saturday Mass: 5:30 p.m., Sunday Mass: 9 a.m. and 11 a.m. Confessions: Sunday 6:45-8:00 a.m.
- SEVENTH DAY ADVENTIST**
Dave Butrick, Pastor. Walnut and Range Streets. Sunday, Sabbath School, 10:30 a.m. Church Services 9:15 a.m.
- ST. JUDE'S EPISCOPAL CHAPEL**
Curtis, MI., 8:30 a.m. Eucharist or Morning Prayer 11 a.m. Eucharist.
- THE CHURCH OF JESUS CHRIST OF LATTER DAY SAINTS (Mormon)**
Located 2 blocks north of blinker light in Germfask. Service every Sunday 10 a.m. Branch president, Fred Peppie, Germfask. Everyone welcome.
- ST. ANDREW'S CHURCH**
Nahans, MI. Rev. George S. Maki. Sunday Vigil Mass 6 p.m. Sacrament of Reconciliation: Saturday after Mass or by appointment. Phone: 644-2626.
- ST. MARY MAGDALENE**
Cooks, MI. Rev. George S. Maki. Mass 8:30 a.m. Reconciliation: after Mass or by appointment. Phone 644-2626.
- HAWKTHORNE COUNTRY CHURCH**
"A FOURSQUARE FAMILY"
Chas and Pat Burton, Pastors. 341-8339. 10 miles North on M-94. Sunday School 9:45 a.m. Morning Worship 11 a.m. Overcomers Bible Study Wednesday 7 p.m.
- CEDAR GROVE MENNONITE CHURCH**
James Troyer, Pastor, phone 341-5007. Eight miles east of Manistique on Kendall Rd. Sunday School 10 a.m., Worship Service 11 a.m., Bible Study 7:30 p.m. Wednesday, Youth Meeting 6 p.m. on the 2nd and 4th Sundays Boys & Girls Clubs 7 p.m. on Sundays during the school year.
- COOKS' CONGREGATIONAL CHURCH**
Robert J. King, Pastor. Sunday School 9:30 a.m.; Church Service 11 a.m. Phone: 644-2837

Rent a New...

CHEVROLET
SPECIAL RENTAL RATES
At Just \$25.95 Per Day!!*

NOW RENTING CHEVROLET LUMINA 4-DOORS!!
*Easy to Rent - Fun to Drive - Competitive Rates
*Pick Up & Delivery Service Available
*Most Credit Cards Accepted
*Chevrolet Commitment to Quality Rental Service

*Plus Mileage

CURRAN
CHEVROLET-PONTIAC-OLDSMOBILE-BUICK-GENEVA
323 South Maple Ave. in Manistique
Call 341-2141 and ask for Jim

Manistique Papers, Inc.

Ben Franklin	Edison Sault Electric
State Savings Bank	
Hoholik's, Inc.	Pioneer-Tribune