

UNITED STATES LIGHTHOUSE ESTABLISHMENT.

31st August 1851

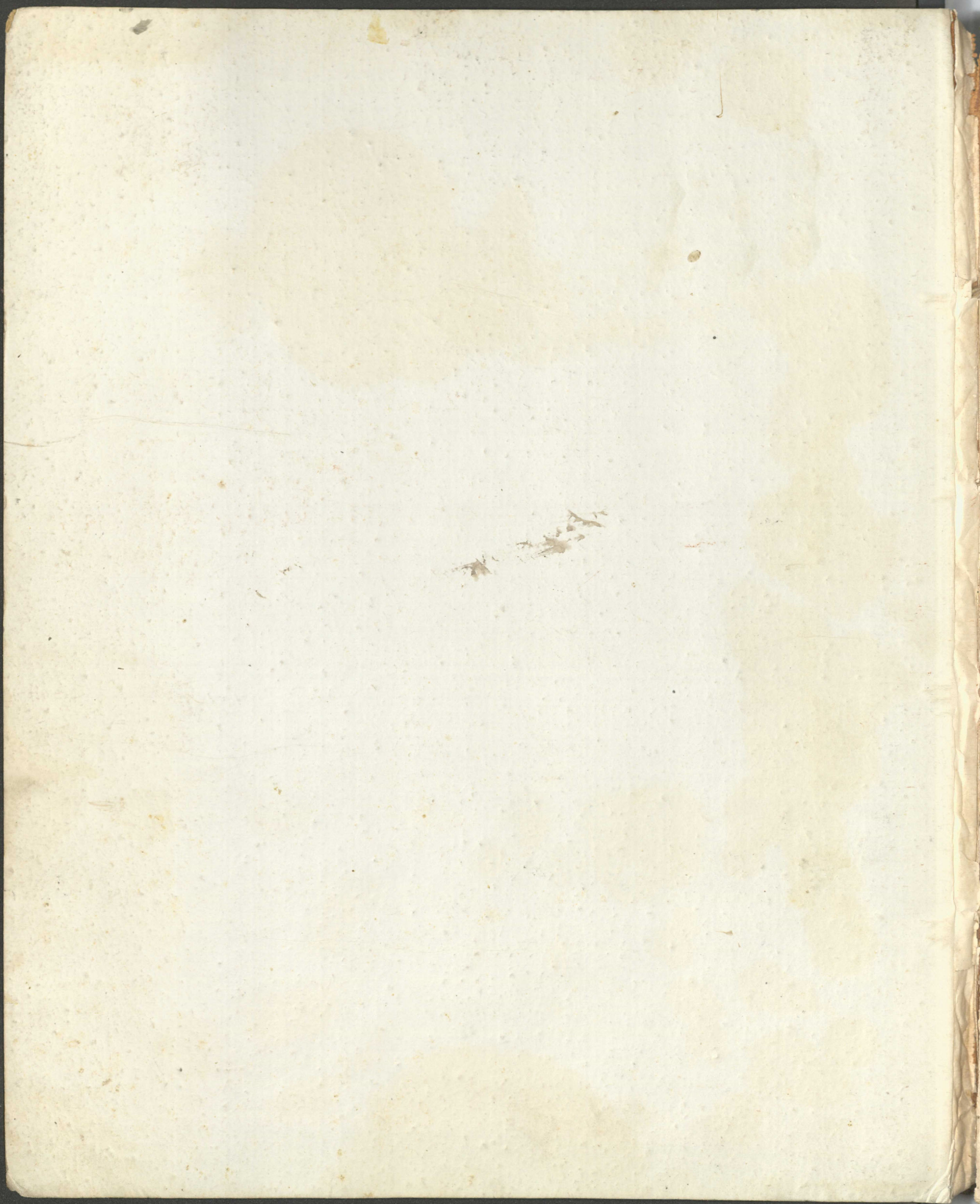
DAILY EXPENDITURE

AND

General Annual Account of Stores, Illuminating Apparatus,
Fixtures, and all other Public Property.

RECEIVED AND CONSUMED

At the *Light Station*
Light Station



J. C. Watson

UNITED STATES LIGHT-HOUSE ESTABLISHMENT.

J. C. Watson

RETURNS.

1. Keepers are required to make up their quarterly returns promptly at the close of each quarter-year, and transmit them by mail to the address of the light-house inspector of the district for examination, and, if found to be correct, entry on the books of the inspector's office, and transmission to the Light-house Board.

2. In addition to the quarterly return of daily expenditures of oil, wicks, and chimneys, and the abstract of the aggregate receipts and expenditures during the quarter, at the back of it (Form No 45), and the annual returns of shipwrecks near the light-station, and of the number of vessels which have passed within sight of the light during the year, a RETURN of all articles and quantities received and expended during the year (Forms Nos. 48a, 48b, 48c), from the 1st July to the 30th June, and a correct inventory of all public property at the light-station at the close of the fiscal year, will be made up from the expenditure books, according to the printed forms, and transmitted immediately thereafter by mail, or delivered by hand, to the light-house inspector of the district, to be examined, entered in the books of his office, and, when found to be correct, transmitted to the Light-house Board.

3. When a light-keeper resigns or is removed, a correct inventory of all public property under his charge will be made up in the presence of his successor, who will retain a copy, and sign two others, as receipts to the retiring keeper (Forms Nos. 46a and 46b), to be sent or delivered to the light-house inspector.

4. In case of the death of a keeper, the successor will receive from the wife or assistant, or other responsible person in charge of the light at the time, the supplies and other public property, and receipt for them as in the case of resignation or dismissal of a keeper.

5. No light-keeper, or representative of a light-keeper, will be entitled to receive any balance on account of salary until he shall have accounted satisfactorily for all the public property in his charge, or which should have been in his charge, at the time of the resignation, dismissal, or death of the keeper.

6. No keeper should sign receipts upon entering upon duty, or for supplies from the supply vessel, or from any other source, unless he is satisfied that the articles and quantities are correctly stated, as keepers will be held strictly and pecuniarily responsible for all articles and quantities they receipt for, and a subsequent discovery of error in their receipts will not relieve them from this responsibility. The names and quantities of all articles of public property must be entered at the proper places in this book as soon as they are received, and the quantities consumed must be entered at the times of issuing them for consumption.

7. All articles condemned as unfit for use are to be retained for exhibition to the inspector; and no alleged deficiency of utensils, brooms, brushes, or other fixtures, will be supplied unless the worn out or condemned articles are kept and exhibited when called for, and the keeper will be held accountable for their original value.

The attention of keepers is called to the *General Accounts* of stores received and consumed, given on the last pages of this book.

See end of Book for General Account of Stores, Illuminating Apparatus, Fixtures, and all other public property, received and consumed.

NOTE.—Light-keepers are strictly prohibited from making any purchases, or incurring any expenses, on account of the Light-house Establishment, by the Rules and Regulations. No bills or claims will be paid. Light-keepers will make their wants known in time, and, if reasonable, they will be supplied by the inspector or other authorized agent of the Light-house Board.

THORNTON A. JENKINS,
Secretary Light-house Board.

As soon as articles are received they should be entered in the book under the appropriate heading. Before a quarterly return is transmitted to the Inspector, its figures should be entered under the head of articles consumed, and a balance should be struck, which balance should, in all cases, correspond with the quarterly return and should be the basis of the next quarterly return.

The same remarks apply to the *Annual Returns*.

LIGHT-VESSELS.

The foregoing directions will be followed by keepers of LIGHT-VESSELS so far as they are applicable to them.

By order of the Light-house Board:

W. B. SHUBRICK,
Chairman.

THORNTON A. JENKINS, }
W. B. FRANKLIN, } *Secretaries.*

TREASURY DEPARTMENT,
Office Light-house Board, Sept. 6, 1858.

Approved:

HOWELL COBB,
Secretary of the Treasury.

CIRCULAR.

ORDERED:

1. That the attention of the inspectors be called to the negligent and irregular manner in which many of the light-keepers keep their expenditure books and make up their quarterly returns of expenditures of oil and other supplies.

2. That the inspectors be instructed to have the daily expenditure returns of the light-keepers carefully examined as they are received from the keepers, and, when found to be correct, entered in the office book, before transmission to the Light-house Board, and report all cases to this Board in which there is evidence of negligence in keeping the accounts of expenditures, or of any attempt to keep them by computation of time, or of quantities of oil expended.

3. That the most rigid accountability must be exacted of all persons employed on light-house service for all public property intrusted to their care, and any failure to account satisfactorily for oil or other public property is to be promptly reported.

By order of the Light-house Board:

W. B. SHUBRICK,
Chairman.

THORNTON A. JENKINS, }
W. B. FRANKLIN, } *Secretaries.*

TREASURY DEPARTMENT,
Office Light-house Board, Washington City.

ACCOUNT of Oil, Wicks, and Chimneys expended daily *Cantonagon* Light house in the month of *May*, 18 *57*, and showing the time of lighting and extinguishing, and the length of time lighted each night.

DAY.	Time of lighting.		Time of extinguishing the light.		Length of time lighted.		Daily quantity of oil consumed in Light-house or Light-vessel lamps.				Number of chimneys broken each night.	Inches of new wick expended.	Quantity of oil taken from butts and set-aside for hand and house lamps.	REMARKS ON THE WEATHER. (Dry, damp, rainy, snowy, light wind, moderate breeze, fresh breeze, or gale, &c.)
	Hour.	Min.	Hour.	Min.	Hour.	Min.	Galls.	Qts.	Pints.	Gills.				
1													2	
2													2	
3													2	
4													2	
5	7	3	4	50	9	46	1	1					3	Calm Clear
6	7	4	4	49	9	44	1	1					3	sw Clear Light Wind
7	7	5	4	48	9	42	1	1					3	sw Clear Light "
8	7	6	4	48	9	40	1		3				2	sw Clear Light
9	7	7	4	46	9	38	1		3				2	sw Cloudy rainy Light "
10	7	8	4	45	9	36	1		3				2	sw Cloudy rainy fresh Wind
11	7	9	4	44	9	34	1		3				3	sw Clear Light "
12	7	10	4	43	9	32	1		3				3	sw Clear fresh
13	7	11	4	42	9	30	1		3				2	sw Clear Light
14	7	12	4	41	9	28	1	1					2	sw Cloudy rainy fresh "
15	7	13	4	40	9	26	1	1					2	sw Cloudy rainy Light
16	7	14	4	39	9	24	1	1					2	sw Clear fresh Wind
17	7	15	4	38	9	22	1		3				2	sw Clear Light "
18	7	16	4	37	9	20	1		3				2	sw Clear Light
19	7	17	4	36	9	18	1		3				2	sw Clear fresh "
20	7	18	4	35	9	16	1		3				2	sw Clear Light
21	7	19	4	34	9	14	1	1					2	sw Clear Light
22	7	20	4	33	9	12	1	1					3	sw Clear fresh
23	7	21	4	32	9	10	1	1					2	sw Clear Light
24	7	22	4	31	9	8	1	1					2	sw Clear Light "
25	7	23	4	30	9	6	1	1					2	sw Clear Light "
26	7	24	4	29	9	4	1	1					2	sw Cloudy rainy foggy Light Wind
27	7	25	4	28	9	2	1	1					3	sw Cloudy rainy foggy Light
28	7	26	4	27	9	0	1	1					2	sw Cloudy rainy foggy Light
29	7	27	4	26	8	58	1		2				2	sw Cloudy rainy foggy Light
30	7	28	4	25	8	56	1	1					2	sw Cloudy foggy Light
31	7	28	4	25	8	56	1	1	3				2	sw Clear Light
													40	

	GALLONS.	QUARTS.	PINTS.
Total quantity consumed in the lamp of the Light-house.....	2		1 1/2
Total quantity consumed this month for use in the dwelling-house or quarters, and other hand lamps, from oil butts.....			
Total quantity expended in this month.....			

Order of Lens *586* Kind of Light *White*
 Number of Wicks in burner *one* Diameter of outer burner *1 1/4*

Written by me—

Thos D. Sturges, Light-Keeper.
 _____, Ass't Keeper.

and showing the time of lighting and extinguishing, and the length of time lighted each night.

DAY.	Time of lighting.		Time of extinguishing the light.		Length of time lighted.		Daily quantity of oil consumed in Light-house or Light-vessel lamps.			Number of chimneys broken each night.	Inches of new wick expended.	Quantity of oil taken from butts and set aside for hand and house lamps.	REMARKS ON THE WEATHER. <small>(Dry, damp, rainy, snowy, light wind, moderate breeze, fresh breeze, or gale, &c.)</small>	
	Hour.	Min.	Hour.	Min.	Hour.	Min.	Galls.	Qts.	Pints.					Gills.
1	7	28	4	25	8	56	1	1			2	W Clear	Light	Wind
2	7	30	4	24	8	54	1	1			2	W Cloudy	Light	"
3	7	30	4	24	8	54	1	1			2	W Clear	Light	"
4	7	31	4	23	8	52	1		3		2	W Clear	Light	"
5	7	32	4	23	8	51	1		3		3	W Clear	Light	"
6	7	30	4	23	8	50	1		3		3	W Clear	Light	"
7	7	35	4	22	8	49	1		3		3	W Clear	Light	"
8	7	36	4	22	8	48	1		3		2	W Clear	Light	"
9	7	38	4	22	8	47	1	1			2	W Clear	Light	Wind
10	7	38	4	22	8	47	1	1			2	W Clear	Light	"
11	7	36	4	22	8	45	1	1			2	W Clear	Light	Wind
12	7	37	4	22	8	44	1	1			3	W Clear	Light	"
13	7	37	4	22	8	44	1	1			3	W Cloudy	Light	"
14	7	38	4	22	8	44	1		3		3	W Cloudy	Light	"
15	7	38	4	22	8	44	1		3		2	W Clear	Light	Wind
16	7	38	4	23	8	44	1		3		2	W Cloudy	Light	"
17	7	39	4	22	8	43	1	1			2	W Clear	Light	"
18	7	39	4	22	8	43	1	1			2	W Clear	Light	"
19	7	39	4	23	8	44	1	1			3	W Clear	Light	"
20	7	39	4	23	8	44	1	1			3	W Clear	Light	"
21	7	39	4	23	8	44	1		3		3	W Clear	Light	"
22	7	40	4	23	8	44	1	1			3	W Clear	Light	"
23	7	40	4	23	8	44	1	1			3	W Clear	Light	"
24	7	40	4	24	8	44	1				2	W Cloudy	Light	"
25	7	40	4	24	8	44	1				2	W Cloudy	Light	"
26	7	40	4	24	8	44	1				2	W Cloudy	Light	"
27	7	40	4	25	8	44	1				2	W Clear	Light	"
28	7	40	4	25	8	44	1				2	W Clear	Light	"
29	7	40	4	25	8	44	1				2	W Clear	Light	"
30	7	40	4	25	8	44	1			2	2	W Cloudy	Light	"

Total quantity consumed in the lamp of the Light-.....

Total quantity consumed this month for use in the dwelling-house or quarters, and other hand lamps, from oil butts.....

Total quantity expended in this month.....

GALLONS.	QUARTS.	PINTS.

Order of Lens *586* Kind of Light *white*
 Number of Wicks in burner *one* Diameter of outer burner *1 1/4*
 Written by me—
MO

Thos. D. Stimp Light-Keeper.
oil on hand 88.2.00
 Ass't Keeper.

ACCOUNT of Oil, Wicks, and Chimneys expended daily *Ontonagon* Light house in the month of *July*, 18*81*, and showing the time of lighting and extinguishing, and the length of time lighted each night.

DAY.	Time of lighting.		Time of extinguishing the light.		Length of time lighted.		Daily quantity of oil consumed in Light-house or Light-vessel lamps.				Number of chimneys broken each night.	Inches of new wick expended.	Quantity of oil taken from butts and set aside for hand and house lamps.	REMARKS ON THE WEATHER. (Dry, damp, rainy, snowy, light wind, moderate breeze, fresh breeze, or gale, &c.)			
	Hour.	Min.	Hour.	Min.	Hour.	Min.	Galls.	Qts.	Pints.	Gills.							
1	7	40	4	26	8	45					1		2 Gills	ve clear	Light	Win	
2	7	40	4	26	8	46					1		2	s clear	Light	"	
3	7	40	4	27	8	47					1		2	sw clear	fresh	"	
4	7	38	4	27	8	48					1		2	s clear	fresh	"	
5	7	39	4	28	8	49					1		2	s.w clear	Light	"	
6	7	39	4	29	8	50					1		2	s.w cloudy	Light	"	
7	7	38	4	30	8	52					1		3	s.w clear	Light	"	
8	7	38	4	30	8	53					1		3	s clear	fresh	"	
9	7	38	4	32	8	54					1		3	sw clear	Light	"	
10	7	38	4	33	8	55					1		3	ve	fresh	"	
11	7	38	4	34	8	57					1		2	s.w clear	fresh	"	
12	7	38	4	34	8	57					1		2	s cloudy	rainy	Light	"
13	7	36	4	34	8	58					1		2	s.w clear	fresh	"	
14	7	36	4	35	8	59					1		2	s clear	Light	"	
15	7	35	4	36	9	1					1		2	s clear	Light	"	
16	7	34	4	37	9	4					1		3	s.w clear	fresh	"	
17	7	34	4	38	9	6					1		3	w clear	fresh	Win	
18	7	33	4	39	9	7					1		3	s clear	Light	"	
19	7	32	4	39	9	8					1		3	w clear	fresh	Wind	
20	7	32	4	40	9	10					1		2	s.w clear	Light	"	
21	7	31	4	41	9	12					1		2	ve clear	fresh	"	
22	7	30	4	42	9	14					1		2	sw clear	Light	"	
23	7	29	4	43	9	16					1		2	s.w clear	Light	"	
24	7	28	4	44	9	18					1		2	s clear	Light	"	
25	7	27	4	45	9	20					1		3	s cloudy	rainy	fresh	
26	7	26	4	46	9	22					1		2	s.w cloudy	rainy	fresh	
27	7	25	4	47	9	24					1		2	w cloudy	Light	"	
28	7	24	4	48	9	26					1		2	s clear	Light	"	
29	7	23	4	49	9	28					1		3	s.w clear	Light	"	
30	7	22	4	51	9	30					1		3	s.w clear	Light	"	
31	7	21	4	52	9	32					1		3	s.w clear	Light	"	

	GALLONS.	QUARTS.	PINTS.
Total quantity consumed in the lamp of the Light-house			
Total quantity consumed this month for use in the dwelling-house or quarters, and other hand lamps, from oil butts.			
Total quantity expended in this month.	11	2	1-0

Order of Lens *5 and 6* Kind of Light *White*
 Number of Wicks in burner *one* Diameter of outer burner *1 1/4 inches*
 Written by me—
J. A. S.
J. A. S. Light-Keeper.
J. A. S. Ass't Keeper.

4

ACCOUNT of Oil, Wicks, and Chimneys expended daily *Ontonagon* Light house on the month of *August*, 18*81*
and showing the time of lighting and extinguishing, and the length of time lighted each night.

DAY.	Time of lighting.		Time of extinguishing the light.		Length of time lighted.		Daily quantity of oil consumed in Light-house or Light-vessel lamps.				Number of chimneys broken each night.	Inches of new wick expended.	Quantity of oil taken from butts and set aside for hand and house lamps.	REMARKS ON THE WEATHER. (Dry, damp, rainy, snowy, light wind, moderate breeze, fresh breeze, or gale, &c.)	
	Hour.	Min.	Hour.	Min.	Hour.	Min.	Galls.	Qts.	Pints.	Gills.					
Ab 1	7	20	4	52	9	32	1		2				2	Gale clear light	Wind
S 2	7	19	4	53	9	34	1						2	W clear fresh	"
W 3	7	18	4	54	9	36	1						3	S.W clear light	"
S 4	7	16	4	55	9	39	1						3	W cloudy rainy fresh	"
S 5	7	15	4	56	9	41	1						2	N.W clear light	"
S 6	7	14	4	57	9	43	1						2	S clear light	"
S 7	7	13	4	58	9	45	1						3	W clear light	"
Ab 8	7	11	4	59	9	48	1						3	S.W cloudy rainy light	"
S 9	7	10	4	0	9	50	1						2	S clear fresh	"
W 10	7	9	5	1	9	52	1						2	S.W clear light	Windy
S 11	7	8	5	2	9	54	1						3	S cloudy rainy	gale
S 12	7	7	5	3	9	56	1						2	S.W cloudy fresh	Wind
S 13	7	5	5	4	9	58	1						3	W clear fresh	"
S 14	7	4	5	5	10	1	1						3	S.W cloudy fresh	"
Ab 15	7	2	5	6	10	3	1						2	S clear light	Wind
S 16	7	1	5	7	10	6	1						2	S cloudy rainy fresh	"
W 17	7	0	5	8	10	8	1						2	S cloudy rainy light	"
S 18	6	58	5	9	10	11	1						3	S.W cloudy foggy fresh	"
S 19	6	56	5	10	10	14	1						3	S.W cloudy rainy light	"
S 20	6	55	5	11	10	17	1						3	S.W clear light	"
S 21	6	54	5	12	10	19	1						2	S.W cloudy foggy light	"
Ab 22	6	52	5	13	10	22	1						2	W clear foggy light	"
S 23	6	51	5	15	10	24	1						2	S.W clear light	"
W 24	6	49	5	16	10	27	1						2	S.W clear light	"
S 25	6	48	5	17	10	29	1						3	S clear fresh	"
S 26	6	46	5	18	10	32	1						3	W cloudy rainy light	"
S 27	6	44	5	19	10	35	1						3	S.W clear fresh	"
S 28	6	42	5	20	10	38	1						3	S.W cloudy fresh	"
W 29	6	41	5	21	10	40	1						2	S.W clear light	"
S 30	6	39	5	22	10	43	1						2	S.W clear fresh	"
W 31	6	37	5	23	10	46	1						2	S.W clear light	"

	GALLONS.	QUARTS.	PINTS.
Total quantity consumed in the lamp of the Light-.....			
Total quantity consumed this month for use in the dwelling-house or quarters, and other hand lamps, from oil butts.....			
Total quantity expended in this month.....			
	<i>August</i>	<i>11</i>	<i>2</i>

Order of Lens *5 and 6* Kind of Light *white* Light-Keeper. *Thos Stipe*
 Number of Wicks in burner *one* Diameter of outer burner *1 1/4* Ass't Keeper. _____
 Written by me— _____

ACCOUNT of Oil, Wicks, and Chimneys expended daily *Ontonagon* Light house, in the month of *Sept*, 18 *81*
and showing the time of lighting and extinguishing, and the length of time lighted each night.

DAY.	Time of lighting.		Time of extinguishing the light.		Length of time lighted.		Daily quantity of oil consumed in Light-house or Light-vessel lamps.				Number of chimneys broken each night.	Inches of new wick expended.	Quantity of oil taken from butts and set aside for land and house lamps.	REMARKS ON THE WEATHER. (Dry, damp, rainy, snowy, light wind, moderate breeze, fresh breeze, or gale, &c.)				
	Hour.	Min.	Hour.	Min.	Hour.	Min.	Galls.	Qts.	Pints.	Gills.								
1	6	35	5	24	10	48					1		2	Sills	S. ve cloudy	Light	Wind	
2	6	35	5	26	10	51					1		2		S. ve cloudy rainy	Light		
3	6	33	5	27	10	54					1		2		S. ve cloudy rainy	Fresh		
4	6	31	5	28	10	56					1		2		S. W clear	Light		
5	6	30	5	29	10	59					1		3		S. ve clear	Fresh		
6	6	28	5	30	11	2					1		3		W clear	Light		
7	6	26	5	31	11	5					1		3		W cloudy	Fresh		
8	6	25	5	32	11	8					1		3		S. ve cloudy rainy	Fresh		
9	6	23	5	33	11	10					1		2		S. W clear	Fresh		
10	6	21	5	34	11	13					1		2		S. cloudy rainy gale	Fresh	Wind	
11	6	19	5	35	11	15					1		2		S. cloudy	Fresh		
12	6	17	5	36	11	18					1		2		W cloudy rainy clear	Light		
13	6	16	5	37	11	20					1		3		S. W clear	Light		
14	6	14	5	38	11	24					1		3		S. clear	Fresh		
15	6	12	5	39	11	27					1		3		S. ve cloudy rainy	Gale		
16	6	11	5	40	11	29					1		3		S. ve cloudy rainy	Gale		
17	6	9	5	41	11	32					1		2		S. clear	Light		
18	6	7	5	42	11	35					1		2		S. clear	Fresh		
19	6	5	5	43	11	38					1		2		S. ve clear foggy	Light		
20	6	4	5	44	11	40					1		2		S. W cloudy	Fresh		
21	6	2	5	45	11	43					1		2		S. cloudy			
22	6	0	5	46	11	46					1		2		S. clear	Light		
23	5	58	5	47	11	49					1		2		S. ve clear	Light		
24	5	56	5	48	11	52					1		3		S. W clear	Fresh		
25	5	54	5	49	11	55					1		2		S. W cloudy	Fresh		
26	5	52	5	50	11	58					1		2		S. clear	Light		
27	5	50	5	51	12	1					1		2		W clear	Fresh		
28	5	48	5	53	12	4					1		2		S. W. clear	Light		
29	5	46	5	54	12	8					1		3		S. ve cloudy	rainy	Light	
30	5	45	5	55	12	10					1				W. clear	Gale		
31																		

Total quantity consumed in the lamp of the Light <i>Lusth. Beacon</i>	GALLONS.	QUARTS.	PINTS.
Total quantity consumed this month for use in the dwelling-house or quarters, and other hand lamps, from oil butts.			
Total quantity expended in this month.	11	2	1 - 2

Order of Lens *5th & 6th* Kind of Light *Lited*
 (Number of Wicks in burner *0* Diameter of outer burner *2 1/2*), Light-Keeper.
 Written by me— *M. J. ...*, Ass't Keeper.

ACCOUNT of Oil, Wicks, and Chimneys expended daily

Ontonagon

Light house in the month of *Oct*

, 18 *87*

and showing the time of lighting and extinguishing, and the length of time lighted each night.

Ontonagon

DAY.	Time of lighting.		Time of extinguishing the light.		Length of time lighted.		Daily quantity of oil consumed in Light-house or Light-vessel lamps.				Number of chimneys broken each night.	Inches of new wick expended.	Quantity of oil taken from butts and set aside for hand and house lamps.	REMARKS ON THE WEATHER.		
	Hour.	Min.	Hour.	Min.	Hour.	Min.	Galls.	Qts.	Pints.	Gills.				(Dry, damp, rainy, snowy, light wind, moderate breeze, fresh breeze, or gale, &c.)		
<i>1</i>	<i>5</i>	<i>49</i>	<i>5</i>	<i>56</i>	<i>12</i>	<i>13</i>				<i>3</i>			<i>2</i>	<i>Gills & clear</i>	<i>Light</i>	<i>Wind</i>
<i>2</i>	<i>5</i>	<i>42</i>	<i>5</i>	<i>54</i>	<i>12</i>	<i>15</i>				<i>3</i>			<i>2</i>	<i>sw clear</i>	<i>Light</i>	<i>"</i>
<i>M 3</i>	<i>5</i>	<i>40</i>	<i>5</i>	<i>58</i>	<i>12</i>	<i>18</i>				<i>3</i>			<i>2</i>	<i>sw clear</i>	<i>Light</i>	<i>"</i>
<i>4</i>	<i>5</i>	<i>39</i>	<i>5</i>	<i>0</i>	<i>12</i>	<i>20</i>				<i>3</i>			<i>2</i>	<i>sw cloudy</i>	<i>Fresh</i>	<i>"</i>
<i>W 5</i>	<i>5</i>	<i>38</i>	<i>6</i>	<i>1</i>	<i>12</i>	<i>23</i>				<i>3</i>			<i>2</i>	<i>sw clear</i>	<i>Light</i>	<i>"</i>
<i>6</i>	<i>5</i>	<i>36</i>	<i>6</i>	<i>2</i>	<i>12</i>	<i>26</i>				<i>2</i>			<i>3</i>	<i>sw clear</i>	<i>Fresh</i>	<i>"</i>
<i>7</i>	<i>5</i>	<i>34</i>	<i>6</i>	<i>3</i>	<i>12</i>	<i>29</i>				<i>3</i>			<i>2</i>	<i>sw clear</i>	<i>Light</i>	<i>"</i>
<i>8</i>	<i>5</i>	<i>33</i>	<i>6</i>	<i>4</i>	<i>12</i>	<i>31</i>				<i>3</i>			<i>2</i>	<i>sw w clear</i>	<i>Light</i>	<i>"</i>
<i>9</i>	<i>5</i>	<i>31</i>	<i>6</i>	<i>5</i>	<i>12</i>	<i>34</i>				<i>2</i>			<i>3</i>	<i>sw clear</i>	<i>Fresh</i>	<i>"</i>
<i>M 10</i>	<i>5</i>	<i>29</i>	<i>6</i>	<i>6</i>	<i>12</i>	<i>39</i>				<i>3</i>			<i>2</i>	<i>sw clear</i>	<i>Light</i>	<i>"</i>
<i>11</i>	<i>5</i>	<i>28</i>	<i>6</i>	<i>8</i>	<i>12</i>	<i>41</i>				<i>2</i>			<i>3</i>	<i>sw cloudy rainy</i>	<i>Light</i>	<i>"</i>
<i>W 12</i>	<i>5</i>	<i>26</i>	<i>6</i>	<i>9</i>	<i>12</i>	<i>44</i>				<i>2</i>			<i>3</i>	<i>sw cloudy</i>	<i>Rainy gale</i>	<i>"</i>
<i>13</i>	<i>5</i>	<i>24</i>	<i>6</i>	<i>10</i>	<i>12</i>	<i>47</i>				<i>3</i>			<i>2</i>	<i>sw clear</i>	<i>Fresh</i>	<i>"</i>
<i>14</i>	<i>5</i>	<i>22</i>	<i>6</i>	<i>11</i>	<i>12</i>	<i>50</i>				<i>3</i>			<i>2</i>	<i>sw cloudy</i>	<i>Fresh</i>	<i>"</i>
<i>15</i>	<i>5</i>	<i>20</i>	<i>6</i>	<i>12</i>	<i>12</i>	<i>53</i>				<i>3</i>			<i>2</i>	<i>sw clear</i>	<i>Light</i>	<i>"</i>
<i>16</i>	<i>5</i>	<i>19</i>	<i>6</i>	<i>13</i>	<i>12</i>	<i>55</i>				<i>3</i>			<i>2</i>	<i>sw w clear</i>	<i>Fresh</i>	<i>"</i>
<i>M 17</i>	<i>5</i>	<i>17</i>	<i>6</i>	<i>14</i>	<i>12</i>	<i>58</i>				<i>3</i>			<i>2</i>	<i>sw cloudy</i>	<i>Fresh</i>	<i>"</i>
<i>18</i>	<i>5</i>	<i>15</i>	<i>6</i>	<i>15</i>	<i>12</i>	<i>59</i>				<i>2</i>			<i>3</i>	<i>sw clear</i>	<i>Light</i>	<i>"</i>
<i>W 19</i>	<i>5</i>	<i>14</i>	<i>6</i>	<i>17</i>	<i>13</i>	<i>3</i>				<i>2</i>			<i>3</i>	<i>sw cloudy rainy snow</i>	<i>Light</i>	<i>"</i>
<i>20</i>	<i>5</i>	<i>13</i>	<i>6</i>	<i>18</i>	<i>13</i>	<i>5</i>				<i>3</i>			<i>2</i>	<i>sw clear</i>	<i>Fresh</i>	<i>"</i>
<i>21</i>	<i>5</i>	<i>11</i>	<i>6</i>	<i>19</i>	<i>13</i>	<i>8</i>				<i>3</i>			<i>2</i>	<i>sw cloudy rainy</i>	<i>Fresh</i>	<i>"</i>
<i>22</i>	<i>5</i>	<i>10</i>	<i>6</i>	<i>21</i>	<i>13</i>	<i>11</i>				<i>3</i>			<i>2</i>	<i>sw cloudy</i>	<i>Light</i>	<i>"</i>
<i>23</i>	<i>5</i>	<i>8</i>	<i>6</i>	<i>22</i>	<i>13</i>	<i>14</i>				<i>3</i>			<i>2</i>	<i>sw cloudy</i>	<i>Fresh</i>	<i>"</i>
<i>M 24</i>	<i>5</i>	<i>7</i>	<i>6</i>	<i>23</i>	<i>13</i>	<i>16</i>				<i>2</i>			<i>3</i>	<i>sw w clear</i>	<i>Fresh</i>	<i>"</i>
<i>25</i>	<i>5</i>	<i>5</i>	<i>6</i>	<i>24</i>	<i>13</i>	<i>19</i>				<i>2</i>			<i>3</i>	<i>sw clear</i>	<i>Fresh</i>	<i>"</i>
<i>W 26</i>	<i>5</i>	<i>4</i>	<i>6</i>	<i>25</i>	<i>13</i>	<i>21</i>				<i>3</i>			<i>2</i>	<i>sw clear</i>	<i>Light</i>	<i>"</i>
<i>27</i>	<i>5</i>	<i>2</i>	<i>6</i>	<i>27</i>	<i>13</i>	<i>25</i>				<i>3</i>			<i>2</i>	<i>sw clear</i>	<i>Light</i>	<i>"</i>
<i>28</i>	<i>5</i>	<i>1</i>	<i>6</i>	<i>28</i>	<i>13</i>	<i>27</i>				<i>3</i>			<i>2</i>	<i>sw & cloudy rainy</i>	<i>Light</i>	<i>"</i>
<i>29</i>	<i>5</i>	<i>0</i>	<i>6</i>	<i>29</i>	<i>13</i>	<i>29</i>				<i>3</i>			<i>2</i>	<i>sw cloudy rainy</i>	<i>Light</i>	<i>"</i>
<i>30</i>	<i>4</i>	<i>58</i>	<i>6</i>	<i>31</i>	<i>13</i>	<i>33</i>				<i>2</i>			<i>3</i>	<i>sw cloudy rainy</i>	<i>Fresh</i>	<i>"</i>
<i>M 31</i>	<i>4</i>	<i>57</i>	<i>6</i>	<i>32</i>	<i>13</i>	<i>35</i>				<i>2</i>			<i>3</i>	<i>sw clear</i>	<i>Light</i>	<i>"</i>

	GALLONS.	QUARTS.	PINTS.	<i>Gills</i>
Total quantity consumed in the lamp of the Light-.....				
Total quantity consumed this month for use in the dwelling-house or quarters, and other hand lamps, from oil butts.....				
Total quantity expended in this month.....	<i>12</i>	<i>2</i>	<i>18</i>	<i>11</i>

{ Order of Lens Kind of Light *The Salpe* , Light-Keeper.
 { Number of Wicks in burner Diameter of outer burner , Ass't Keeper.
 Written by me-.....

Handwritten marks

ACCOUNT of Oil, Wicks, and Chimneys expended daily *Ontonagon Light House* in the month of *Nov*, 18*81*, and showing the time of lighting and extinguishing, and the length of time lighted each night.

DAY.	Time of lighting.		Time of extinguishing the light.		Length of time lighted.		Daily quantity of oil consumed in Light-house or Light-vessel lamps.		Number of chimneys broken each night.	Inches of new wick expended.	Quantity of oil taken from butts and set aside for hand and house lamps.	REMARKS ON THE WEATHER. (Dry, damp, rainy, snowy, light wind, moderate breeze, fresh breeze, or gale, &c.)	
	Hour.	Min.	Hour.	Min.	Hour.	Min.	Galls.	Qts. Pints. Gills.					
1	4	55	6	33	13	38	1	3		3	oil on wick	Clear	Fresh
W 2	4	54	6	34	13	40	1	3		3	oil on wick	rainy snow	gale
T 3	4	53	6	35	13	42	1	1		2	oil on wick	cloudy snow	gale
Tu 4	4	52	6	36	13	44	1	1		2	oil on wick	Clear	Light
W 5	4	51	6	37	13	47	1	1		2	oil on wick	Clear	Light
Th 6	4	50	6	39	13	50	1	1		2	oil on wick	Clear	Light
W 7	4	49	6	40	13	52	1	3		3	oil on wick	Clear	Fresh
T 8	4	48	6	41	13	54	1	3		3	oil on wick	cloudy drizzle	Fresh
W 9	4	47	6	43	13	58	1	1		2	oil on wick	cloudy snow	gale
T 10	4	45	6	44	14	0	1	1		2	oil on wick	Clear	Light
Tu 11	4	44	6	45	14	2	1	1		2	oil on wick	cloudy	Light
W 12	4	43	6	47	14	5	1	1		2	oil on wick	cloudy rainy snow	Fresh
T 13	4	42	6	48	14	7	1	1		2	oil on wick	cloudy	Light
W 14	4	41	6	49	14	9	1	3		3	oil on wick	Clear	Light
Th 15	4	40	6	51	14	12	1	3		3	oil on wick	cloudy	Light
W 16	4	39	6	52	14	14	1	3		3	oil on wick	cloudy rainy	Light
T 17	4	38	6	53	14	16	1	1		2	oil on wick	cloudy rainy snow	Fresh
Tu 18	4	37	6	54	14	18	1	1		2	oil on wick	cloudy snow	Fresh
W 19	4	36	6	55	14	19	1	1		3	oil on wick	cloudy snow	Light
Th 20	4	36	6	56	14	21	1	1		3	oil on wick	cloudy snow	Fresh
W 21	4	35	6	58	14	24	1	1		3	oil on wick	cloudy snow	Light
T 22	4	34	6	59	14	26	1	1		3	oil on wick	cloudy	Light
W 23	4	33	7	0	14	27	1	1		3	oil on wick	cloudy snows	Fresh
Th 24	4	33	7	1	14	29	1	1		3	oil on wick	cloudy snow	Fresh
Tu 25	4	32	7	3	14	32	1	1		3	oil on wick	cloudy snow	Fresh
W 26	4	32	7	4	14	33	1	1		3	oil on wick	cloudy snow	Fresh
Th 27	4	31	7	5	14	35	1	1		3	oil on wick	Clear	Light
W 28	4	30	7	6	14	37	1	1		3	oil on wick	Clear	Light
Th 29	4	29	7	7	14	38	1	1		3	oil on wick	cloudy snow	Fresh
W 30	4	29	7	9	14	40	1	1		3	oil on wick	cloudy	Light
31													

Total quantity consumed in the lamp of the Light-.....	GALLONS.	QUARTS.	PINTS.	Gills
Total quantity consumed this month for use in the dwelling-house or quarters, and other hand lamps, from oil butts.....				
Total quantity expended in this month.....	13	2	0	0

Order of Lens Kind of Light
 Number of Wicks in burner Diameter of outer burner
 Written by me-
 Light-Keeper.
 Ass't Keeper.

ACCOUNT of Oil, Wicks, and Chimneys expended daily

Unbornoon

Light *house*, in the month of *Dec*

and showing the time of lighting and extinguishing, and the length of time lighted each night.

DAY.	Time of lighting.		Time of extinguishing the light.		Length of time lighted.		Daily quantity of oil consumed in Light-house or Light-vessel lamps.				Number of chimneys broken each night.	Inches of new wick expended.	Quantity of oil taken from butts and set aside for hand and house lamps.	REMARKS ON THE WEATHER. (Dry, damp, rainy, snowy, light wind, moderate breeze, fresh breeze, or gale, &c.)	
	Hour.	Min.	Hour.	Min.	Hour.	Min.	Galls.	Qts.	Pints.	Gills.					
1	4	29	7	10	14	41	1	1					3	<i>Gills W Cloudy</i>	<i>Light</i>
2	4	28	7	11	14	43	1	1					3	<i>W. Clear</i>	<i>Light</i>
3	4	28	7	12	14	44	1	1					3	<i>Clear</i>	<i>Light</i>
4	4	27	7	13	14	45	1	1					3	<i>Cloudy</i>	<i>Fresh</i>
<i>all</i>	4	26	7	14	14	48	1	1					3	<i>W Cloudy</i>	<i>Snow Fresh</i>
6															
7															
8															
9															
10															
11															
12															
13															
14															
15															
16															
17															
18															
19															
20															
21															
22															
23															
24															
25															
26															
27															
28															
29															
30															
31															

	GALLONS.	QUARTS.	PINTS.	Gills
Total quantity consumed in the lamp of the Light-.....				
Total quantity consumed this month for use in the dwelling-house or quarters, and other hand lamps, from oil butts.....				
Total quantity expended in this month.....	4	3	0	1

{ Order of Lens Kind of Light , Light-Keeper.
 { Number of Wicks in burner Diameter of outer burner , Ass't Keeper.
 Written by me—

ACCOUNT of Oil, Wicks, and Chimneys expended daily at *Centonagon* Light *House*, in the month of *January*, 18*82*, and showing the time of lighting and extinguishing, and the length of time lighted each night.

DAY.	Time of lighting.		Time of extinguishing the light.		Length of time lighted.		Daily quantity of oil consumed in Light-house or Light-vessel lamps.				Number of chimneys broken each night.	Inches of new wick expended.	Quantity of oil taken from butts and set aside for hand and house lamps.	REMARKS ON THE WEATHER. (Dry, damp, rainy, snowy, light wind, moderate breeze, fresh breeze, or gale, &c.)
	Hour.	Min.	Hour.	Min.	Hour.	Min.	Galls.	Qts.	Pints.	Gills.				
1											2			
2											2			
3											2			
4											3			
5											3			
6											2			
7											2			
8											2			
9											2			
10											3			
11											2			
12											2			
13											2			
14											2			
15											3			
16											3			
17											2			
18											2			
19											2			
20											2			
21											3			
22											3			
23											2			
24											2			
25											2			
26											2			
27											3			
28											2			
29											2			
30											2			
31											2			

	GALLONS.	QUARTS.	PINTS.
Total quantity consumed in the lamp of the Light- <i>Station</i>			<i>8 1/2</i>
Total quantity consumed this month for use in the dwelling-house or quarters, and other hand lamps, from oil butts.....	2	0	1 . 2
Total quantity expended in this month.....			

Order of Lens _____ Kind of Light _____, Light-Keeper.
 Number of Wicks in burner _____ Diameter of outer burner _____, Ass't Keeper.
 Written by me— _____

ACCOUNT of Oil, Wicks, and Chimneys expended daily *at Ontonagon Light Station* in the month of *March*, 18*92*, and showing the time of lighting and extinguishing, and the length of time lighted each night.

DAY.	Time of lighting.		Time of extinguishing the light.		Length of time lighted.		Daily quantity of oil consumed in Light-house or Light-vessel lamps.				Number of chimneys broken each night.	Inches of new wick expended.	Quantity of oil taken from butts and set aside for hand and house lamps.	REMARKS ON THE WEATHER. (Dry, damp, rainy, snowy, light wind, moderate breeze, fresh breeze, or gale, &c.)
	Hour.	Min.	Hour.	Min.	Hour.	Min.	Galls.	Qts.	Pints.	Gills.				
1													2	
2													2	
3													2	
4													3	
5													3	
6													2	
7													2	
8													2	
9													2	
10													3	
11													2	
12													2	
13													2	
14													2	
15													3	
16													3	
17													2	
18													2	
19													2	
20													2	
21													3	
22													3	s
23													2	
24													2	
25													2	
26													2	
27													3	
28													2	
29													2	
30													2	
31													2	

	GALLONS.	QUARTS.	PINTS.
Total quantity consumed in the lamp of the Light-.....			<i>file</i>
Total quantity consumed this month for use in the dwelling-house or quarters, and other hand lamps, from oil butts.....		0	1 2
Total quantity expended in this month.....			

Order of Lens *↔* Kind of Light _____
 Number of Wicks in burner _____ Diameter of outer burner _____
 Written by me— _____

The Thipe, Light-Keeper.
 _____, Ass't Keeper.

ACCOUNT of Oil, Wicks, and Chimneys expended daily *Ontonagon* Light *St. D.* in the month of *April*, 18*82* and showing the time of lighting and extinguishing, and the length of time lighted each night.

DAY.	Time of lighting.		Time of extinguishing the light.		Length of time lighted.		Daily quantity of oil consumed in Light-house or Light-vessel lamps.				Number of chimneys broken each night.	Inches of new wick expended.	Quantity of oil taken from butts and set aside for hand and house lamps.	REMARKS ON THE WEATHER. (Dry, damp, rainy, snowy, light wind, moderate breeze, fresh breeze, or gale, &c.)	
	Hour.	Min.	Hour.	Min.	Hour.	Min.	Galls.	Qts.	Pints.	Gills.					
1													2		
2													2		
3													2		
4													3		
5													3		
6													2		
7													2		
8													3		
9													2		
10													2		
11													2		
12													2		
13													3		
14													3		
15													2		
16													2		
17													2		
18													2		
19													2		
20													2		
21													2		
22	G	47	5	8	10	20	1	1	2				3	S.W. Char	Fresh Wind
23	G	48	5	6	10	11	1	1					3	W. Char	Fresh "
24	G	49	5	4	10	13	1	1	+				2	S.W. Char	Fresh "
25	G	51	5	3	10	11	1	1					2	W. Char	Fresh "
26	G	52	5	2	10	9	1	1	+				2	S.W. Cloudy Rainy	Light "
27	G	53	5	1	10	7	1	1					2	W. W. Cloudy	Fresh "
28	G	54	4	59	10	3	1	1	+				2	W. Char	Fresh "
29	G	56	4	57	10	0	1	1					2	S. Char	Light "
30	G	58	4	56	9	58	1	1	+				3	S.W. Char	Fresh "
31	G														

	GALLONS.	QUARTS.	PINTS.
Total quantity consumed in the lamp of the Light-house.....	3	1	7 1/2 gills
Total quantity consumed this month for use in the dwelling-house or quarters, and other hand lamps, from oil butts.....	2	1	1 1/2
Total quantity expended in this month.....	5	2 1/2	1 1/2 gills

{ Order of Lens Kind of Light
 { Number of Wicks in burner Diameter of outer burner

Written by me—

John, Light-Keeper.
 _____, Ass't Keeper.

ACCOUNT of Oil, Wicks, and Chimneys expended daily

Ontonagon

Light house in the month of

May

, 18 *82*

and showing the time of lighting and extinguishing, and the length of time lighted each night.

DAY.	Time of lighting.		Time of extinguishing the light.		Length of time lighted.		Daily quantity of oil consumed in Light-house or Light-vessel lamps.				Number of chimneys broken each night.	Inches of new wick expended.	Quantity of oil taken from butts and set aside for hand and house lamps.	REMARKS ON THE WEATHER. (Dry, damp, rainy, snowy, light wind, moderate breeze, fresh breeze, or gale, &c.)	
	Hour.	Min.	Hour.	Min.	Hour.	Min.	Galls.	Qts.	Pints.	Gills.					
<i>M</i> 1	6	59	4	54	9	53		1	1				2	Gills	<i>W</i> Cloudy snow gale
<i>S</i> 2	7	0	4	53	9	53		1	1				2	<i>S.W</i>	Clear light wind
<i>W</i> 3	7	1	4	52	9	53		1	1				3	<i>S.W</i>	Clear light
<i>S</i> 4	7	2	4	51	9	48		1	1				2	<i>N.E</i>	Clear fresh
<i>S</i> 5	7	3	4	50	9	46		1	1				3	<i>S.W</i>	Clear fresh
<i>S</i> 6	7	4	4	49	9	44		1	1				3	<i>S.W</i>	Clear fresh
<i>S</i> 7	7	5	4	48	9	42		1	1				2	<i>S.W</i>	Clear fresh
<i>W</i> 8	7	6	4	47	9	40		1	11				2	<i>S.W</i>	Cloudy rainy light
<i>S</i> 9	7	7	4	46	9	38		1	3				2	<i>S.W</i>	Cloudy rainy light
<i>W</i> 10	7	8	4	45	9	36		1	3				3	<i>S.W</i>	Cloudy rainy gale
<i>S</i> 11	7	9	4	44	9	34		1	3				2	<i>S.W</i>	Cloudy gale
<i>S</i> 12	7	10	4	43	9	32		1	3				2	<i>S.W</i>	Clear fresh wind
<i>S</i> 13	7	11	4	42	9	28		1	1				3	<i>S.W</i>	Clear fresh
<i>S</i> 14	7	12	4	41	9	26		1	1				3	<i>S.W</i>	Clear light
<i>W</i> 15	7	13	4	40	9	24		1	1				2	<i>S.W</i>	Clear light
<i>S</i> 16	7	14	4	39	9	22		1	3				2	<i>W</i>	Clear light
<i>W</i> 17	7	15	4	38	9	20		1	3				2	<i>W</i>	Clear light
<i>S</i> 18	7	16	4	37	9	18		1	3				2	<i>S.W</i>	Cloudy fresh
<i>S</i> 19	7	17	4	36	9	16		1	3				2	<i>S</i>	Cloudy rainy light
<i>S</i> 20	7	18	4	35	9	14		1	1				2	<i>S</i>	Cloudy rainy light
<i>S</i> 21	7	19	4	34	9	12		1	1				2	<i>S</i>	Cloudy rainy light
<i>M</i> 22	7	20	4	33	9	10		1	1				3	<i>W</i>	Cloudy rainy fresh
<i>S</i> 23	7	21	4	32	9	8		1	1				3	<i>W</i>	Cloudy snow light
<i>W</i> 24	7	22	4	31	9	6		1	3				2	<i>S.W</i>	Clear light
<i>S</i> 25	7	23	4	30	9	4		1	3				2	<i>W</i>	Clear light
<i>S</i> 26	7	24	4	29	9	2		1	3				2	<i>S.W</i>	Clear light
<i>S</i> 27	7	25	4	28	9	0		1	3				2	<i>S</i>	Clear light wind
<i>S</i> 28	7	26	4	27	8	58		1	3				2	<i>S</i>	Clear light
<i>M</i> 29	7	27	4	27	8	57		1	3				2	<i>S</i>	Clear fresh
<i>S</i> 30	7	28	4	26	8	55		1	3				2	<i>S.W</i>	Clear light
<i>W</i> 31	7	29	4	26	8	55		1	3				2	<i>S.W</i>	Clear light

	GALLONS.	QUARTS.	PINTS.
Total quantity consumed in the lamp of the Light-house.....	10	3	3
Total quantity consumed this month for use in the dwelling-house or quarters, and other hand lamps, from oil butts.....	2		2
Total quantity expended in this month.....			

Order of Lens _____ Kind of Light _____
 Number of Wicks in burner _____ Diameter of outer burner _____
 Written by me— _____

Thos. Sturge, Light-Keeper.
Thos. Sturge, Ass't Keeper.

ACCOUNT of Oil, Wicks, and Chimneys expended daily

Ontonagon

Light house in the month of

June

, 18*82*

and showing the time of lighting and extinguishing, and the length of time lighted each night.

DAY.	Time of lighting.		Time of extinguishing the light.		Length of time lighted.		Daily quantity of oil consumed in Light-house or Light-vessel lamps.				Number of chimneys broken each night.	Inches of new wick expended.	Quantity of oil taken from butts and set aside for hand and house lamps.	REMARKS ON THE WEATHER. (Dry, damp, rainy, snowy, light wind, moderate breeze, fresh breeze, or gale, &c.)	
	Hour.	Min.	Hour.	Min.	Hour.	Min.	Galls.	Qts.	Pints.	Gills.					
<i>S</i> 1	<i>7</i>	<i>29</i>	<i>4</i>	<i>25</i>	<i>8</i>	<i>56</i>	<i>1</i>	<i>1</i>					<i>2</i>	<i>Yellow Clear</i>	<i>Light Wind</i>
<i>S</i> 2	<i>7</i>	<i>30</i>	<i>4</i>	<i>24</i>	<i>8</i>	<i>54</i>	<i>1</i>	<i>1</i>					<i>2</i>	<i>W Clear</i>	<i>Light</i>
<i>S</i> 3	<i>7</i>	<i>30</i>	<i>4</i>	<i>23</i>	<i>8</i>	<i>52</i>	<i>1</i>	<i>1</i>					<i>2</i>	<i>W Clear</i>	<i>Fresh</i>
<i>S</i> 4	<i>7</i>	<i>31</i>	<i>4</i>	<i>23</i>	<i>8</i>	<i>52</i>	<i>1</i>	<i>1</i>					<i>2</i>	<i>W. to Clear</i>	<i>Fresh</i>
<i>M</i> 5	<i>7</i>	<i>32</i>	<i>4</i>	<i>23</i>	<i>8</i>	<i>51</i>	<i>1</i>		<i>3</i>				<i>3</i>	<i>W Clear</i>	<i>Light</i>
<i>S</i> 6	<i>7</i>	<i>33</i>	<i>4</i>	<i>23</i>	<i>8</i>	<i>50</i>	<i>1</i>		<i>3</i>				<i>2</i>	<i>W Clear</i>	<i>Light</i>
<i>W</i> 7	<i>7</i>	<i>33</i>	<i>4</i>	<i>22</i>	<i>8</i>	<i>49</i>	<i>1</i>		<i>3</i>				<i>3</i>	<i>W Clear</i>	<i>Light</i>
<i>S</i> 8	<i>7</i>	<i>34</i>	<i>4</i>	<i>22</i>	<i>8</i>	<i>48</i>	<i>1</i>		<i>3</i>				<i>3</i>	<i>W. to Clear</i>	<i>Fresh</i>
<i>Th</i> 9	<i>7</i>	<i>35</i>	<i>4</i>	<i>22</i>	<i>8</i>	<i>47</i>	<i>1</i>		<i>3</i>				<i>2</i>	<i>W. to Clear</i>	<i>Light</i>
<i>S</i> 10	<i>7</i>	<i>35</i>	<i>4</i>	<i>22</i>	<i>8</i>	<i>47</i>	<i>1</i>		<i>3</i>				<i>2</i>	<i>W Clear</i>	<i>Light</i>
<i>S</i> 11	<i>7</i>	<i>36</i>	<i>4</i>	<i>22</i>	<i>8</i>	<i>46</i>	<i>1</i>	<i>1</i>					<i>2</i>	<i>W Clear</i>	<i>Light</i>
<i>M</i> 12	<i>7</i>	<i>37</i>	<i>4</i>	<i>22</i>	<i>8</i>	<i>45</i>	<i>1</i>	<i>1</i>					<i>2</i>	<i>W. to Clear</i>	<i>Light</i>
<i>S</i> 13	<i>7</i>	<i>37</i>	<i>4</i>	<i>22</i>	<i>8</i>	<i>45</i>	<i>1</i>		<i>3</i>				<i>3</i>	<i>W. to Clear</i>	<i>Light</i>
<i>W</i> 14	<i>7</i>	<i>38</i>	<i>4</i>	<i>22</i>	<i>8</i>	<i>44</i>	<i>1</i>		<i>3</i>				<i>3</i>	<i>W Cloudy</i>	<i>Fresh</i>
<i>S</i> 15	<i>7</i>	<i>38</i>	<i>4</i>	<i>22</i>	<i>8</i>	<i>44</i>	<i>1</i>		<i>2</i>				<i>2</i>	<i>W Clear</i>	<i>Fresh</i>
<i>Th</i> 16	<i>7</i>	<i>38</i>	<i>4</i>	<i>22</i>	<i>8</i>	<i>44</i>	<i>1</i>		<i>2</i>				<i>2</i>	<i>W Clear</i>	<i>Fresh</i>
<i>S</i> 17	<i>7</i>	<i>39</i>	<i>4</i>	<i>22</i>	<i>8</i>	<i>43</i>	<i>1</i>		<i>2</i>				<i>2</i>	<i>W Clear</i>	<i>Light</i>
<i>S</i> 18	<i>7</i>	<i>39</i>	<i>4</i>	<i>22</i>	<i>8</i>	<i>43</i>	<i>1</i>		<i>2</i>				<i>2</i>	<i>W Cloudy rainy</i>	<i>gale</i>
<i>M</i> 19	<i>7</i>	<i>39</i>	<i>4</i>	<i>22</i>	<i>8</i>	<i>43</i>	<i>1</i>		<i>2</i>				<i>2</i>	<i>W Clear</i>	<i>Fresh</i>
<i>S</i> 20	<i>7</i>	<i>39</i>	<i>4</i>	<i>22</i>	<i>8</i>	<i>43</i>	<i>1</i>		<i>2</i>				<i>2</i>	<i>W Clear</i>	<i>Fresh</i>
<i>W</i> 21	<i>7</i>	<i>39</i>	<i>4</i>	<i>22</i>	<i>8</i>	<i>43</i>	<i>1</i>		<i>2</i>				<i>2</i>	<i>W Cloudy</i>	<i>Light</i>
<i>S</i> 22	<i>7</i>	<i>39</i>	<i>4</i>	<i>23</i>	<i>8</i>	<i>44</i>	<i>1</i>		<i>2</i>				<i>2</i>	<i>W Clear</i>	<i>Light</i>
<i>Th</i> 23	<i>7</i>	<i>40</i>	<i>4</i>	<i>23</i>	<i>8</i>	<i>45</i>	<i>1</i>		<i>2</i>				<i>2</i>	<i>W Cloudy rainy foggy</i>	<i>Fresh</i>
<i>S</i> 24	<i>7</i>	<i>40</i>	<i>4</i>	<i>24</i>	<i>8</i>	<i>46</i>	<i>1</i>		<i>2</i>				<i>2</i>	<i>W. to Clear</i>	<i>Light</i>
<i>S</i> 25	<i>7</i>	<i>40</i>	<i>4</i>	<i>24</i>	<i>8</i>	<i>46</i>	<i>1</i>		<i>2</i>				<i>2</i>	<i>W Clear</i>	<i>Fresh</i>
<i>M</i> 26	<i>7</i>	<i>40</i>	<i>4</i>	<i>24</i>	<i>8</i>	<i>46</i>	<i>1</i>		<i>2</i>				<i>2</i>	<i>W Clear</i>	<i>Light</i>
<i>S</i> 27	<i>7</i>	<i>40</i>	<i>4</i>	<i>25</i>	<i>8</i>	<i>47</i>	<i>1</i>		<i>2</i>				<i>2</i>	<i>W Clear</i>	<i>Light</i>
<i>W</i> 28	<i>7</i>	<i>40</i>	<i>4</i>	<i>25</i>	<i>8</i>	<i>47</i>	<i>1</i>		<i>2</i>				<i>2</i>	<i>W Clear</i>	<i>Light</i>
<i>S</i> 29	<i>7</i>	<i>40</i>	<i>4</i>	<i>25</i>	<i>8</i>	<i>47</i>	<i>1</i>		<i>2</i>				<i>2</i>	<i>W Clear</i>	<i>Fresh</i>
<i>Th</i> 30	<i>7</i>	<i>40</i>	<i>4</i>	<i>25</i>	<i>8</i>	<i>47</i>	<i>1</i>		<i>2</i>				<i>2</i>	<i>W Cloudy</i>	<i>Light</i>
31															

Total quantity consumed in the lamp of the Light-
 Total quantity consumed this month for use in the dwelling-house or quarters, and other hand lamps, from oil butts.
 Total quantity expended in this month.

GALLONS. QUARTS. PINTS.

{ Order of Lens Kind of Light , Light-Keeper.
 { Number of Wicks in burner Diameter of outer burner , Ass't Keeper.
 Written by me-

ACCOUNT of Oil, Wicks, and Chimneys expended daily *On tonagon* Light house in the month of *July*, 18*82*, and showing the time of lighting and extinguishing, and the length of time lighted each night.

DAY.	Time of lighting.		Time of extinguishing the light.		Length of time lighted.		Daily quantity of oil consumed in Light-house or Light-vessel lamps.				Number of chimneys broken each night.	Inches of new wick expended.	Quantity of oil taken from butts and set aside for hand and house lamps.	REMARKS ON THE WEATHER. (Dry, damp, rainy, snowy, light wind, moderate breeze, fresh breeze, or gale, &c.)	
	Hour.	Min.	Hour.	Min.	Hour.	Min.	Galls.	Qts.	Pints.	Gills.					
1	7	40	4	26	8	45	1		2				2	Yll. W. Clear	Light
2	7	40	4	26	8	45	1		2				2	N.W. Clear	Light
3	7	40	4	27	8	48	1		2				2	S. Clear	Fresh
4	7	39	4	25	8	48	1		2				2	S.W. Clear	Light
5	7	39	4	28	8	49	1		2				2	S.W. Clear	Light
6	7	39	4	29	8	50	1		2				2	S.W. Clear	Light
7	7	38	4	30	8	52	1		2				2	S. Cloudy	Foggy Rainy Light
8	7	38	4	30	8	52	1		2				2	S.W. Cloudy	Foggy Light
9	7	38	4	31	8	54	1		2				2	S.W. Cloudy	Rainy Fresh
10	7	38	4	32	8	55	1		2				2	W. Clear	Fresh
11	7	37	4	33	8	57	1		2				2	W. Clear	Fresh
12	7	37	4	33	8	57	1		2				2	W. Cloudy	Rainy Light
13	7	36	4	34	8	58	1		2				2	S.W. Clear	Light
14	7	36	4	35	8	59	1		2				2	S.W. Clear	Light
15	7	35	4	36	9	1	1		2				2	S.W. Cloudy	Rainy Fresh
16	7	34	4	37	9	4	1		2				2	W. Cloudy	Rainy Gale
17	7	34	4	38	9	6	1		2				2	W. Clear	Fresh
18	7	33	4	39	9	8	1		2				2	S.W. Clear	Light
19	7	33	4	39	9	8	1		2				2	W. Clear	Light
20	7	32	4	40	9	10	1		2				2	W. Clear	Fresh
21	7	31	4	41	9	12	1		2				2	S.W. Clear	Light
22	7	30	4	42	9	14	1		2				2	S.W. Clear	Light
23	7	29	4	43	9	16	1		2				2	S.W. Cloudy	Rainy Fresh
24	7	28	4	44	9	18	1		2				2	S.W. Cloudy	Rainy Fresh
25	7	27	4	45	9	20	1		2				2	S.W. Clear	Light
26	7	26	4	46	9	22	1		2				2	S.W. Cloudy	Rainy Light
27	7	25	4	47	9	24	1		2				2	S.W. Clear	Light
28	7	24	4	48	9	26	1		2				2	S.W. Clear	Foggy Fresh
29	7	23	4	49	9	28	1		2				2	S.W. Clear	Fresh
30	7	22	4	51	9	30	1		2				2	S.W. Clear	Fresh
31	7	21	4	52	9	32	1		2				2	S.W. Cloudy	Rainy Light

	GALLONS.	QUARTS.	PINTS.
Total quantity consumed in the lamp of the Light-.....			
Total quantity consumed this month for use in the dwelling-house or quarters, and other hand lamps, from oil butts.....			
Total quantity expended in this month.....	11	2	1

Order of Lens Kind of Light
 Number of Wicks in burner Diameter of outer burner
 Written by me—
John Stripe, Light-Keeper.
 Ass't Keeper.

ACCOUNT of Oil, Wicks, and Chimneys expended daily

Ontonagon Light house in the month of

August 1852

and showing the time of lighting and extinguishing, and the length of time lighted each night.

DAY.	Time of lighting.		Time of extinguishing the light.		Length of time lighted.		Daily quantity of oil consumed in Light-house or Light-vessel lamps.				Number of chimneys broken each night.	Inches of new wick expended.	Quantity of oil taken from butts and set aside for hand and house lamps.	REMARKS ON THE WEATHER. (Dry, damp, rainy, snowy, light wind, moderate breeze, fresh breeze, or gale, &c.)	
	Hour.	Min.	Hour.	Min.	Hour.	Min.	Galls.	Qs.	Pints.	Gills.					
1	5	20	4	52	9	32	1			2			2	Yellow Cloudy	Light Wind
2	7	19	4	53	9	34	1			2			2	N.W. Clear	Light
3	8	18	4	54	9	36	1			2			2	S.W. Clear	Light
A	7	16	4	55	9	38	1			3			2	W. Clear	Light
J	7	16	4	56	9	40	1			3			2	SE Clear	Light
S	7	14	4	57	9	43	1			3			2	N.W. Clear	Light
M	7	13	4	58	9	45	1			3			2	S.W. Cloudy rainy	Fresh
	7	11	4	59	9	48	1			2			2	N.W. Clear	Light
	7	10	4	0	9	50	1			2			2	S.W. Clear	Light
	7	9	5	1	9	52	1			2			2	SE Clear	Fresh
	7	8	5	2	9	54	1			2			2	W. Clear	Fresh
	7	7	5	3	9	56	1			2			2	S.W. Cloudy rainy	Light
	7	5	5	4	9	58	1			2			2	SE W. Cloudy rainy	Fresh
	7	4	5	5	10	1	1			2			2	S.W. Clear	Light
	7	2	5	6	10	3	1			2			2	S. Clear	Light
	7	0	5	7	10	6	1			3			2	S.W. Clear	Light
J	7	00	5	8	10	8	1			3			2	S.W. Clear	Light
Z	6	58	5	9	10	11	1			2			2	S.W. Clear	Fresh
O	6	56	5	10	10	14	1			2			2	W. Clear	Fresh
O	6	53	5	11	10	17	1			2			2	S. Cloudy rainy	Light
M	6	54	5	12	10	19	1			2			2	SE Cloudy rainy	Fresh
S	6	52	5	14	10	22	1			3			2	SE Clear	Light
W	6	51	5	15	10	24	1			3			2	N.W. Clear	Light
S	6	47	5	16	10	27	1			3			2	S.W. Clear Non Rainy	Light
Z	6	48	5	18	10	29	1			3			2	S.W. Clear	Light
O	6	46	5	18	10	32	1			2			2	SE Clear	Light
O	6	44	5	19	10	35	1			2			2	S.W. Clear	Light
W	6	42	5	20	10	38	1			2			2	N. Clear	Fresh
S	6	41	5	21	10	40	1			2			2	S.W. Cloudy rainy	Light
W	6	39	5	22	10	43	1			2			2	S. Cloudy rainy	Light
Z	6	37	5	23	10	46	1			2			2	S.W. Clear	Light

2 7

Total quantity consumed in the lamp of the Light-.....

Total quantity consumed this month for use in the dwelling-house or quarters, and other hand lamps, from oil butts.....

Total quantity expended in this month.....

GALLONS.	QUARTS.	PINTS.
11	3	1 29

{ Order of Lens Kind of Light
 { Number of Wicks in burner Diameter of outer burner

Written by me—

The Ship Light-Keeper.
 Ass't Keeper.

ACCOUNT of Oil, Wicks, and Chimneys expended daily
and showing the time of lighting and extinguishing, and the length of time lighted each night.

Ontonagon Light-house in the month of *Sept*, 18*82*

DAY.	Time of lighting.		Time of extinguishing the light.		Length of time lighted.		Daily quantity of oil consumed in Light-house or Light-vessel lamps.				Number of chimneys broken each night.	Inches of new wick expended.	Quantity of oil taken from butts and set aside for hand and house lamps.	REMARKS ON THE WEATHER. (Dry, damp, rainy, snowy, light wind, moderate breeze, fresh breeze, or gale, &c.)		
	Hour.	Min.	Hour.	Min.	Hour.	Min.	Galls.	Qts.	Pints.	Gills.						
<i>Fr</i> 1	<i>6</i>	<i>38</i>	<i>5</i>	<i>24</i>	<i>10</i>	<i>48</i>	<i>1</i>		<i>3</i>				<i>2</i>	<i>sw clear</i>	<i>Light</i>	<i>Wind</i>
<i>S</i> 2	<i>6</i>	<i>35</i>	<i>5</i>	<i>26</i>	<i>10</i>	<i>51</i>	<i>1</i>		<i>3</i>				<i>2</i>	<i>se clear</i>	<i>Light</i>	<i>Wind</i>
<i>S</i> 3	<i>6</i>	<i>33</i>	<i>5</i>	<i>27</i>	<i>10</i>	<i>54</i>	<i>1</i>		<i>3</i>				<i>2</i>	<i>se clear</i>	<i>Light</i>	<i>Wind</i>
<i>W</i> 4	<i>6</i>	<i>31</i>	<i>5</i>	<i>28</i>	<i>10</i>	<i>56</i>	<i>1</i>		<i>3</i>				<i>2</i>	<i>sw cloudy</i>	<i>Light</i>	<i>Wind</i>
<i>F</i> 5	<i>6</i>	<i>30</i>	<i>5</i>	<i>29</i>	<i>10</i>	<i>59</i>	<i>1</i>		<i>3</i>				<i>3</i>	<i>sw cloudy</i>	<i>Light</i>	<i>Wind</i>
<i>W</i> 6	<i>6</i>	<i>28</i>	<i>5</i>	<i>30</i>	<i>11</i>	<i>2</i>	<i>1</i>		<i>3</i>				<i>3</i>	<i>sw clear</i>	<i>Light</i>	<i>Wind</i>
<i>F</i> 7	<i>6</i>	<i>26</i>	<i>5</i>	<i>31</i>	<i>11</i>	<i>5</i>	<i>1</i>		<i>2</i>				<i>3</i>	<i>sw clear</i>	<i>Light</i>	<i>Wind</i>
<i>W</i> 8	<i>6</i>	<i>25</i>	<i>5</i>	<i>32</i>	<i>11</i>	<i>7</i>	<i>1</i>		<i>2</i>				<i>3</i>	<i>w clear</i>	<i>Light</i>	<i>Wind</i>
<i>F</i> 9	<i>6</i>	<i>23</i>	<i>5</i>	<i>33</i>	<i>11</i>	<i>10</i>	<i>1</i>		<i>2</i>				<i>2</i>	<i>sw clear</i>	<i>Light</i>	<i>Wind</i>
<i>S</i> 10	<i>6</i>	<i>21</i>	<i>5</i>	<i>34</i>	<i>11</i>	<i>13</i>	<i>1</i>		<i>2</i>				<i>2</i>	<i>sw clear</i>	<i>Light</i>	<i>Wind</i>
<i>W</i> 11	<i>6</i>	<i>19</i>	<i>5</i>	<i>35</i>	<i>11</i>	<i>15</i>	<i>1</i>		<i>2</i>				<i>2</i>	<i>sw clear</i>	<i>Light</i>	<i>Wind</i>
<i>F</i> 12	<i>6</i>	<i>17</i>	<i>5</i>	<i>36</i>	<i>11</i>	<i>18</i>	<i>1</i>		<i>3</i>				<i>2</i>	<i>sw cloudy</i>	<i>Light</i>	<i>Wind</i>
<i>W</i> 13	<i>6</i>	<i>16</i>	<i>5</i>	<i>37</i>	<i>11</i>	<i>20</i>	<i>1</i>		<i>3</i>				<i>3</i>	<i>sw clear</i>	<i>Light</i>	<i>Wind</i>
<i>F</i> 14	<i>6</i>	<i>14</i>	<i>5</i>	<i>38</i>	<i>11</i>	<i>24</i>	<i>1</i>		<i>2</i>				<i>3</i>	<i>w clear</i>	<i>Light</i>	<i>Wind</i>
<i>S</i> 15	<i>6</i>	<i>12</i>	<i>5</i>	<i>39</i>	<i>11</i>	<i>27</i>	<i>1</i>		<i>2</i>				<i>3</i>	<i>se clear</i>	<i>Light</i>	<i>Wind</i>
<i>S</i> 16	<i>6</i>	<i>11</i>	<i>5</i>	<i>40</i>	<i>11</i>	<i>29</i>	<i>1</i>		<i>2</i>				<i>3</i>	<i>sw clear</i>	<i>Light</i>	<i>Wind</i>
<i>F</i> 17	<i>6</i>	<i>9</i>	<i>5</i>	<i>41</i>	<i>11</i>	<i>32</i>	<i>1</i>		<i>3</i>				<i>2</i>	<i>sw clear</i>	<i>Light</i>	<i>Wind</i>
<i>W</i> 18	<i>6</i>	<i>7</i>	<i>5</i>	<i>42</i>	<i>11</i>	<i>35</i>	<i>1</i>		<i>3</i>				<i>2</i>	<i>w clear</i>	<i>Light</i>	<i>Wind</i>
<i>F</i> 19	<i>6</i>	<i>5</i>	<i>5</i>	<i>43</i>	<i>11</i>	<i>38</i>	<i>1</i>		<i>3</i>				<i>2</i>	<i>se clear</i>	<i>Light</i>	<i>Wind</i>
<i>W</i> 20	<i>6</i>	<i>4</i>	<i>5</i>	<i>44</i>	<i>11</i>	<i>40</i>	<i>1</i>		<i>3</i>				<i>2</i>	<i>sw cloudy</i>	<i>Light</i>	<i>Wind</i>
<i>F</i> 21	<i>6</i>	<i>2</i>	<i>5</i>	<i>45</i>	<i>11</i>	<i>43</i>	<i>1</i>		<i>3</i>				<i>2</i>	<i>sw clear</i>	<i>Light</i>	<i>Wind</i>
<i>S</i> 22	<i>6</i>	<i>0</i>	<i>5</i>	<i>46</i>	<i>11</i>	<i>46</i>	<i>1</i>		<i>3</i>				<i>2</i>	<i>w cloudy</i>	<i>Light</i>	<i>Wind</i>
<i>S</i> 23	<i>5</i>	<i>58</i>	<i>5</i>	<i>47</i>	<i>11</i>	<i>49</i>	<i>1</i>		<i>2</i>				<i>2</i>	<i>w clear</i>	<i>Light</i>	<i>Wind</i>
<i>F</i> 24	<i>5</i>	<i>56</i>	<i>5</i>	<i>48</i>	<i>11</i>	<i>52</i>	<i>1</i>		<i>2</i>				<i>2</i>	<i>sw clear</i>	<i>Light</i>	<i>Wind</i>
<i>W</i> 25	<i>5</i>	<i>54</i>	<i>5</i>	<i>49</i>	<i>11</i>	<i>55</i>	<i>1</i>		<i>2</i>				<i>3</i>	<i>sw clear</i>	<i>Light</i>	<i>Wind</i>
<i>F</i> 26	<i>5</i>	<i>52</i>	<i>5</i>	<i>50</i>	<i>11</i>	<i>58</i>	<i>1</i>		<i>3</i>				<i>2</i>	<i>sw clear</i>	<i>Light</i>	<i>Wind</i>
<i>W</i> 27	<i>5</i>	<i>50</i>	<i>5</i>	<i>51</i>	<i>12</i>	<i>1</i>	<i>1</i>		<i>3</i>				<i>2</i>	<i>s clear</i>	<i>Light</i>	<i>Wind</i>
<i>F</i> 28	<i>5</i>	<i>48</i>	<i>5</i>	<i>53</i>	<i>12</i>	<i>4</i>	<i>1</i>		<i>2</i>				<i>2</i>	<i>se clear</i>	<i>Light</i>	<i>Wind</i>
<i>S</i> 29	<i>5</i>	<i>46</i>	<i>5</i>	<i>54</i>	<i>12</i>	<i>8</i>	<i>1</i>		<i>2</i>				<i>3</i>	<i>se clear</i>	<i>Light</i>	<i>Wind</i>
<i>F</i> 30	<i>5</i>	<i>44</i>	<i>5</i>	<i>55</i>	<i>12</i>	<i>10</i>	<i>1</i>		<i>2</i>				<i>2</i>	<i>se clear</i>	<i>Light</i>	<i>Wind</i>
31													<i>4</i>			

	GALLONS.	QUARTS.	PINTS.
Total quantity consumed in the lamp of the Light.....			
Total quantity consumed this month for use in the dwelling-house or quarters, and other hand lamps, from oil butts.....			
Total quantity expended in this month.....	<i>12</i>	<i>0</i>	<i>1</i>

Order of Lens _____ Kind of Light _____
 Number of Wicks in burner _____ Diameter of outer burner _____
 Written by me— _____, Light-Keeper.
 _____, Ass't Keeper.

ACCOUNT of Oil, Wicks, and Chimneys expended daily *Butonagon* Light house in the month of *Oct*, 18*89* and showing the time of lighting and extinguishing, and the length of time lighted each night.

DAY.	Time of lighting.		Time of extinguishing the light.		Length of time lighted.		Daily quantity of oil consumed in Light-house or Light-vessel lamps.				Number of chimneys broken each night.	Inches of new wick expended.	Quantity of oil taken from butts and set aside for hand and house lamps.	REMARKS ON THE WEATHER. (Dry, damp, rainy, snowy, light wind, moderate breeze, fresh breeze, or gale, &c.)	
	Hour.	Min.	Hour.	Min.	Hour.	Min.	Galls.	Qts.	Pints.	Gills.					
<i>W</i> 1	<i>5</i>	<i>13</i>	<i>5</i>	<i>12</i>	<i>13</i>		<i>1</i>				<i>3</i>		<i>2 2/20</i>	<i>se Cloudy Rainy</i>	<i>Fresh</i>
<i>W</i> 2	<i>5</i>	<i>12</i>	<i>5</i>	<i>57</i>	<i>12</i>	<i>15</i>	<i>1</i>				<i>3</i>		<i>2</i>	<i>se Cloudy Rainy</i>	<i>Fresh</i>
<i>W</i> 3	<i>5</i>	<i>40</i>	<i>5</i>	<i>58</i>	<i>12</i>	<i>18</i>	<i>1</i>				<i>3</i>		<i>2</i>	<i>se Cloudy Rainy</i>	<i>Light</i>
<i>W</i> 4	<i>5</i>	<i>38</i>	<i>5</i>	<i>0</i>	<i>12</i>	<i>20</i>	<i>1</i>				<i>3</i>		<i>3</i>	<i>NW Clear</i>	<i>Light</i>
<i>W</i> 5	<i>5</i>	<i>38</i>	<i>6</i>	<i>1</i>	<i>12</i>	<i>23</i>	<i>1</i>				<i>3</i>		<i>3</i>	<i>W Clear</i>	<i>Fresh</i>
<i>W</i> 6	<i>5</i>	<i>30</i>	<i>6</i>	<i>2</i>	<i>12</i>	<i>26</i>	<i>1</i>				<i>3</i>		<i>3</i>	<i>se Clear</i>	<i>Fresh</i>
<i>W</i> 7	<i>5</i>	<i>34</i>	<i>6</i>	<i>3</i>	<i>12</i>	<i>29</i>	<i>1</i>				<i>3</i>		<i>3</i>	<i>se Cloudy Rainy</i>	<i>Light</i>
<i>W</i> 8	<i>5</i>	<i>33</i>	<i>6</i>	<i>4</i>	<i>12</i>	<i>31</i>	<i>1</i>				<i>2</i>		<i>2</i>	<i>W Cloudy Rainy</i>	<i>Gale</i>
<i>W</i> 9	<i>5</i>	<i>31</i>	<i>6</i>	<i>5</i>	<i>12</i>	<i>34</i>	<i>1</i>				<i>2</i>		<i>2</i>	<i>W Clear</i>	<i>Fresh</i>
<i>W</i> 10	<i>5</i>	<i>29</i>	<i>6</i>	<i>6</i>	<i>12</i>	<i>37</i>	<i>1</i>				<i>2</i>		<i>2</i>	<i>NW Clear</i>	<i>Fresh</i>
<i>W</i> 11	<i>5</i>	<i>28</i>	<i>6</i>	<i>8</i>	<i>12</i>	<i>41</i>	<i>1</i>				<i>2</i>		<i>2</i>	<i>SW Clear</i>	<i>Light</i>
<i>W</i> 12	<i>5</i>	<i>26</i>	<i>6</i>	<i>9</i>	<i>12</i>	<i>44</i>	<i>1</i>				<i>3</i>		<i>2</i>	<i>se Clear</i>	<i>Light</i>
<i>W</i> 13	<i>5</i>	<i>24</i>	<i>6</i>	<i>10</i>	<i>12</i>	<i>47</i>	<i>1</i>				<i>3</i>		<i>3</i>	<i>se Cloudy Rainy</i>	<i>Fresh</i>
<i>W</i> 14	<i>5</i>	<i>22</i>	<i>6</i>	<i>11</i>	<i>12</i>	<i>50</i>	<i>1</i>				<i>3</i>		<i>3</i>	<i>se Cloudy Rainy</i>	<i>Fresh</i>
<i>W</i> 15	<i>5</i>	<i>20</i>	<i>6</i>	<i>12</i>	<i>12</i>	<i>53</i>	<i>1</i>				<i>3</i>		<i>3</i>	<i>W Clear</i>	<i>Light</i>
<i>W</i> 16	<i>5</i>	<i>19</i>	<i>6</i>	<i>13</i>	<i>12</i>	<i>55</i>	<i>1</i>				<i>3</i>		<i>3</i>	<i>SW Cloudy Rainy</i>	<i>Light</i>
<i>W</i> 17	<i>5</i>	<i>17</i>	<i>6</i>	<i>14</i>	<i>12</i>	<i>58</i>	<i>1</i>				<i>2</i>		<i>2</i>	<i>SW Clear</i>	<i>Fresh</i>
<i>W</i> 18	<i>5</i>	<i>15</i>	<i>6</i>	<i>15</i>	<i>12</i>	<i>59</i>	<i>1</i>				<i>2</i>		<i>2</i>	<i>se Clear</i>	<i>Fresh</i>
<i>W</i> 19	<i>5</i>	<i>14</i>	<i>6</i>	<i>17</i>	<i>13</i>	<i>3</i>	<i>1</i>				<i>2</i>		<i>2</i>	<i>NW Clear</i>	<i>Light</i>
<i>W</i> 20	<i>5</i>	<i>13</i>	<i>6</i>	<i>18</i>	<i>13</i>	<i>5</i>	<i>1</i>				<i>2</i>		<i>2</i>	<i>W Cloudy Rainy</i>	<i>Fresh</i>
<i>W</i> 21	<i>5</i>	<i>11</i>	<i>6</i>	<i>18</i>	<i>13</i>	<i>8</i>	<i>1</i>				<i>3</i>		<i>3</i>	<i>W Clear</i>	<i>Fresh</i>
<i>W</i> 22	<i>5</i>	<i>10</i>	<i>6</i>	<i>21</i>	<i>13</i>	<i>11</i>	<i>1</i>				<i>3</i>		<i>3</i>	<i>se Clear</i>	<i>Light</i>
<i>W</i> 23	<i>5</i>	<i>8</i>	<i>6</i>	<i>22</i>	<i>13</i>	<i>14</i>	<i>1</i>				<i>3</i>		<i>2</i>	<i>se Clear</i>	<i>Light</i>
<i>W</i> 24	<i>5</i>	<i>7</i>	<i>6</i>	<i>23</i>	<i>13</i>	<i>16</i>	<i>1</i>				<i>3</i>		<i>2</i>	<i>W Clear</i>	<i>Gale</i>
<i>W</i> 25	<i>4</i>	<i>5</i>	<i>6</i>	<i>24</i>	<i>13</i>	<i>19</i>	<i>1</i>				<i>3</i>		<i>2</i>	<i>se Cloudy Rainy</i>	<i>Fresh</i>
<i>W</i> 26	<i>5</i>	<i>4</i>	<i>6</i>	<i>25</i>	<i>13</i>	<i>21</i>	<i>1</i>				<i>3</i>		<i>2</i>	<i>se Clear</i>	<i>Light</i>
<i>W</i> 27	<i>5</i>	<i>2</i>	<i>6</i>	<i>27</i>	<i>13</i>	<i>27</i>	<i>1</i>				<i>3</i>		<i>2</i>	<i>se Clear</i>	<i>Light</i>
<i>W</i> 28	<i>5</i>	<i>1</i>	<i>6</i>	<i>28</i>	<i>13</i>	<i>29</i>	<i>1</i>				<i>3</i>		<i>2</i>	<i>W Cloudy</i>	<i>Gale</i>
<i>W</i> 29	<i>5</i>	<i>0</i>	<i>6</i>	<i>29</i>	<i>13</i>	<i>33</i>	<i>1</i>				<i>3</i>		<i>2</i>	<i>se Cloudy Rainy</i>	<i>Fresh</i>
<i>W</i> 30	<i>4</i>	<i>38</i>	<i>6</i>	<i>31</i>	<i>13</i>	<i>33</i>	<i>1</i>				<i>3</i>		<i>2</i>	<i>se Cloudy</i>	<i>Gale</i>
<i>W</i> 31	<i>4</i>	<i>30</i>	<i>6</i>	<i>32</i>	<i>13</i>	<i>35</i>	<i>1</i>				<i>3</i>		<i>2</i>	<i>W Cloudy</i>	<i>Gale</i>

	GALLONS.	QUARTS.	PINTS.
Total quantity consumed in the lamp of the Light-.....	<i>10</i>	<i>1</i>	<i>1.1</i>
Total quantity consumed this month for use in the dwelling-house or quarters, and other hand lamps, from oil butts.....	<i>2</i>	<i>1</i>	<i>0.0</i>
Total quantity expended in this month.....	<i>12</i>	<i>2</i>	<i>1.1</i>

{ Order of Lens Kind of Light , Light-Keeper.
 { Number of Wicks in burner Diameter of outer burner , Ass't Keeper.
 Written by me-.....

and showing the time of lighting and extinguishing, and the length of time lighted each night.

DAY.	Time of lighting.		Time of extinguishing the light.		Length of time lighted.		Daily quantity of oil consumed in Light-house or Light-vessel lamps.				Number of chimneys broken each night.	Inches of new wick expended.	Quantity of oil taken from butts and set aside for hand and house lamps.	REMARKS ON THE WEATHER. (Dry, damp, rainy, snowy, light wind, moderate breeze, fresh breeze, or gale, &c.)	
	Hour.	Min.	Hour.	Min.	Hour.	Min.	Galls.	Qts.	Pints.	Gills.					
W 1	4 55	6 33	13 38				1		3				3	SW Cloudy snow	Fresh
T 2	4 54	6 34	13 40				1		3				3	S.W. Cloudy	Light
W 3	4 53	6 35	13 42				1		1				2	SE Clear	Fresh
T 4	4 52	6 36	13 44				1		1				2	SE Cloudy	Fresh
W 5	4 51	6 35	13 47				1		1				2	SE Cloudy	Light
T 6	4 50	6 39	13 50				1		1				2	S Clear	Fresh
W 7	4 49	6 40	13 52				1		1				3	SW Clear	Light
T 8	4 48	6 41	13 54				1		3				3	W Clear	Fresh
W 9	4 47	6 43	13 58				1		3				2	S Clear	Light
T 10	4 45	6 44	14 0				1		1				2	S Clear	Light
W 11	4 44	6 45	14 2				1		1				2	N.W. Cloudy Rainy	gale
T 12	4 43	6 47	14 5				1		1				2	N.W. Cloudy Rainy snow	gale
W 13	4 42	6 48	14 7				1		1				2	N.W. Cloudy snow	Fresh
T 14	4 41	6 49	14 9				1		1				3	S.W. Cloudy	Light
W 15	4 40	6 51	14 12				1		3				3	S Clear	Light
T 16	4 39	6 52	14 14				1		3				3	SW Clear	Fresh
W 17	4 38	6 53	14 16				1		3				2	S.W. Clear	Light
T 18	4 37	6 54	14 18				1		1				2	S.W. Cloudy Rainy	Fresh
W 19	4 36	6 55	14 19				1		1				3	S Clear	Light
T 20	4 35	6 56	14 21				1		1				3	S Cloudy snow	Light
W 21	4 34	6 58	14 24				1		1				3	W Cloudy Rainy	Fresh
T 22	4 33	6 59	14 26				1		1				3	N.W. Cloudy snow	Light
W 23	4 32	7 0	14 27				1		1				3	N.W. Cloudy snow	Light
T 24	4 32	7 1	14 29				1		1				3	W Clear	Light
W 25	4 32	7 3	14 32				1		1				3	W Cloudy	Fresh
T 26	4 31	7 4	14 33				1		1				3	S.W. Cloudy snow	Fresh
W 27	4 30	7 5	14 35				1		1				3	S.W. Cloudy snow	Light
T 28	4 29	7 6	14 37				1		1				3	W Cloudy	Fresh
W 29	4 28	7 7	14 38				1		1				3	W Cloudy snow	Fresh
T 30	4 28	7 9	14 40				1		1				3	W Cloudy	Light
31															

	GALLONS.	QUARTS.	PINTS.
Total quantity consumed in the lamp of the Light-.....	11	0	0 . 1
Total quantity consumed this month for use in the dwelling-house or quarters, and other hand lamps, from oil butts.....	2	1	1 . 3
Total quantity expended in this month.....	13	2	0 . 0

Order of Lens Kind of Light
 Number of Wicks in burner Diameter of outer burner , Light-Keeper.
 Written by me- , Ass't Keeper.

ACCOUNT of Oil, Wicks, and Chimneys expended daily *Ortongon Light house* in the month of *Decem*, 18*52*
and showing the time of lighting and extinguishing, and the length of time lighted each night.

DAY.	Time of lighting.		Time of extinguishing the light.		Length of time lighted.		Daily quantity of oil consumed in Light-house or Light-vessel lamps.				Number of chimneys broken each night.	Inches of new wick expended.	Quantity of oil taken from butts and set aside for hand and house lamps.	REMARKS ON THE WEATHER. (Dry, damp, rainy, snowy, light wind, moderate breeze, fresh breeze, or gale, &c.)
	Hour.	Min.	Hour.	Min.	Hour.	Min.	Galls.	Qts.	Pints.	Gills.				
1	4	27	7	10	14	41		1	1			3	<i>1st Cloudy snow</i>	<i>Fresh</i>
2	4	28	7	11	14	43		1	1			3	<i>1st Cloudy snow</i>	<i>Light</i>
3	4	28	7	12	14	44		1	1			3	<i>1st Cloudy</i>	<i>Light</i>
4	4	27	7	13	14	45		1	1			3	<i>1st cloudy Snow</i>	<i>Light</i>
5												3		
6												3		
7												3		
8												3		
9												3		
10												3		
11												3		
12												3		
13												3		
14												3		
15												3		
16												3		
17												3		
18												3		
19												3		
20												3		
21												3		
22												3		
23												3		
24												3		
25												3		
26												3		
27												3		
28												3		
29												3		
30												3		
31												3		

	GALLONS.	QUARTS.	PINTS.
Total quantity consumed in the lamp of the Light-.....	1	2	0.0
Total quantity consumed this month for use in the dwelling-house or quarters, and other hand lamps, from oil butts.....	2	3	1.1
Total quantity expended in this month.....	4	1	1.1

{ Order of Lens Kind of Light , Light-Keeper.
 { Number of Wicks in burner Diameter of outer burner , Ass't Keeper.
 Written by me—

ACCOUNT of Oil, Wicks, and Chimneys expended daily *Ontonagow* Light *Station*, in the month of *January*, 18*83*, and showing the time of lighting and extinguishing, and the length of time lighted each night.

DAY.	Time of lighting.		Time of extinguishing the light.		Length of time lighted.		Daily quantity of oil consumed in Light-house or Light-vessel lamps.				Number of chimneys broken each night.	Inches of new wick expended.	Quantity of oil taken from butts and set aside for hand and house lamps.	REMARKS ON THE WEATHER. (Dry, damp, rainy, snowy, light wind, moderate breeze, fresh breeze, or gale, &c.)	
	Hour.	Min.	Hour.	Min.	Hour.	Min.	Galls.	Qts.	Pints.	Gills.					
1															
2															
3															
4															
5															
6															
7															
8															
9															
10															
11															
12															
13															
14															
15															
16															
17															
18															
19															
20															
21															
22															
23															
24															
25															
26															
27															
28															
29															
30															
31															

	GALLONS.	QUARTS.	PINTS.
Total quantity consumed in the lamp of the Light.....			
Total quantity consumed this month for use in the dwelling-house or quarters, and other hand lamps, from oil butts.....	2	0	1 2 1/2
Total quantity expended in this month.....			

{ Order of Lens Kind of Light
 { Number of Wicks in burner Diameter of outer burner
 Written by me—
 _____, Light-Keeper.
 _____, Ass't Keeper.

ACCOUNT of Oil, Wicks, and Chimneys expended daily *Boulogne* Light *Station* in the month of *February*, 18 *54*, and showing the time of lighting and extinguishing, and the length of time lighted each night.

DAY.	Time of lighting.		Time of extinguishing the light.		Length of time lighted.		Daily quantity of oil consumed in Light-house or Light-vessel lamps.				Number of chimneys broken each night.	Inches of new wick expended.	Quantity of oil taken from butts and set aside for hand and house lamps.	REMARKS ON THE WEATHER. (Dry, damp, rainy, snowy, light wind, moderate breeze, fresh breeze, or gale, &c.)
	Hour.	Min.	Hour.	Min.	Hour.	Min.	Galls.	Qts.	Pints.	Gills.				
1											2			
2											2			
3											2			
4											3			
5											3			
6											2			
7											2			
8											1			
9											2			
10											3			
11											3			
12											2			
13											2			
14											2			
15											2			
16											3			
17											2			
18											2			
19											2			
20											2			
21											3			
22											3			
23											3			
24											2			
25											2			
26											2			
27											2			
28											2			
29														
30														
31														

	GALLONS.	QUARTS.	PINTS.
Total quantity consumed in the lamp of the Light.....			
Total quantity consumed this month for use in the dwelling-house or quarters, and other hand lamps, from oil butts.....	2	0	0
Total quantity expended in this month.....			

{ Order of Lens Kind of Light , Light-Keeper.
 { Number of Wicks in burner Diameter of outer burner , Ass't Keeper.
 Written by me—

ACCOUNT of Oil, Wicks, and Chimneys expended daily

Ontonagon

Light Station, in the month of

March

, 18 *89*

and showing the time of lighting and extinguishing, and the length of time lighted each night.

DAY.	Time of lighting.		Time of extinguishing the light.		Length of time lighted.		Daily quantity of oil consumed in Light-house or Light-vessel lamps.				Number of chimneys broken each night.	Inches of new wick expended.	Quantity of oil taken from butts and set aside for hand and house lamps.	REMARKS ON THE WEATHER. (Dry, damp, rainy, snowy, light wind, moderate breeze, fresh breeze, or gale, &c.)	
	Hour.	Min.	Hour.	Min.	Hour.	Min.	Galls.	Qts.	Pints.	Gills.					
1													2		
2													2		
3													2		
4													3		
5													3		
6													2		
7													2		
8													2		
9													2		
10													3		
11													2		
12													2		
13													2		
14													2		
15													3		
16													3		
17													2		
18													2		
19													2		
20													2		
21													3		
22													3		
23													2		
24													2		
25													2		
26													2		
27													3		
28													2		
29													2		
30													2		
31													2		

	GALLONS.	QUARTS.	PINTS.
Total quantity consumed in the lamp of the Light-			
Total quantity consumed this month for use in the dwelling-house or quarters, and other hand lamps, from oil butts.....	2	0	1 2 20
Total quantity expended in this month.....			

Order of Lens Kind of Light
 Number of Wicks in burner Diameter of outer burner
 Written by me—
 , Light-Keeper.
 , Ass't Keeper.

ACCOUNT of Oil, Wicks, and Chimneys expended daily

Light _____, in the month of _____,

18 _____,

and showing the time of lighting and extinguishing, and the length of time lighted each night.

DAY.	Time of lighting.		Time of extinguishing the light.		Length of time lighted.		Daily quantity of oil consumed in Light-house or Light-vessel lamps.				Number of chimneys broken each night.	Inches of new wick expended.	Quantity of oil taken from butts and set aside for hand and house lamps.	REMARKS ON THE WEATHER. (Dry, damp, rainy, snowy, light wind, moderate breeze, fresh breeze, or gale, &c.)
	Hour.	Min.	Hour.	Min.	Hour.	Min.	Galls.	Qts.	Pints.	Gills.				
1														
2														
3														
4														
5														
6														
7														
8														
9														
10														
11														
12														
13														
14														
15														
16														
17														
18														
19														
20														
21														
22														
23														
24														
25														
26														
27														
28														
29														
30														
31														

	GALLONS.	QUARTS.	PINTS.
Total quantity consumed in the lamp of the Light-.....			
Total quantity consumed this month for use in the dwelling-house or quarters, and other hand lamps, from oil butts.....			
Total quantity expended in this month.....			

{ Order of Lens _____ Kind of Light _____, Light-Keeper.
 { Number of Wicks in burner _____ Diameter of outer burner _____, Ass't Keeper.
 Written by me— _____

GENERAL ACCOUNT of Stores received at the Light-

at

Number of lights and order of apparatus,

Description of light,

YEAR AND DAY OF THE MONTH.	OIL. order lens, yards. Reflector, doz. Rod lamp, doz. Solar lamp. Hand lamp & Lucernae, oz. order lens, no.	WICKS. order.	CHIMNEYS. Reflector, no. Solar lamp, no. Rod lamp, no.	CLEANING MATERIALS, &c.													
				Emery paper, sheets. Sand paper, sheets. Writing paper, quires Blotting paper, sheets. Rouge powder, oz. Rotten stone, lbs. Whiting, lbs. Calf-skin, pieces. Linen towels, no. Buff-skins, no. Spirits wine, qts. Clock oil, vials. Soap, lbs. Sponges, no. Crash towels, no. Spare filter cloth, no. Spare rolls, no. Spare cord, revolving machine, no. Spare lamp cords, no. Lamp burners, no. Hand lamps, no.													

mineral oil

	oil	wick	chimneys
on hand June 30 th to be carried to the next quarter	86 1 0 1	55 9	79
Received from supply vessel 21 August	50 0 0 0	0 0	100 5 1/2 + 6 1/4
	136 1 0 1	55 9	179

1881

Expanded	oil	wicks	Chim			
July	11 2 1 0	8	3			
Aug	11 2 1 3	8	4			
Sept	11 2 0 3	10	2			
	34 3 1 2	22	9	34 3 1 2	2 02	9
Remaining on hand to be carried to next quarter's account	131 1 0 3				53 7	170

Expanded	oil	wicks	Chim			
Oct	12 2 0 3	9	5			
Nov	13 2 0 0	8	5			
Dec	4 3 0 1	4	0			
	30 3 1 0	19	10	30 3 1 0	1 9	10
Remaining on hand to be carried to next quarter's account	105 1 1 3				51 10	160

1882

Jan	2 0 1 2					
Feb	2 0 0 0					
Mar	2 0 1 2					
	6 1 1 0			6 6 1 1 0		
Remaining on hand to be carried to next quarter's account	150	135		94 0 0 3	57 10	160
					50 4	1 51
				350 0 3	50 4	1 51

Expanded	oil	wicks	Chim			
Rec'd Aug 5 th				59 0 0 0	50 4	1 51
on hand & receipts during month ending Sept 30 th				80 0 0 0	~	~
July	11 2 1 0	4	3	139 0 0 0	50 4	1 51
Aug	11 3 1 2	7	2			
Sept	12 0 1 0	7	4			
	35 2 1 2	108	9	35 2 1 2	1 08	9
Remaining to be carried to next Pr. Account	103 1 0 2				48 08	142

GENERAL ACCOUNT of Illuminating Apparatus, Fixtures, and all other Public Property (except supplies) received at the Light- at
Number of lights and order of apparatus, Description of light,

YEAR AND DAY OF
THE MONTH.

18 . Day.

