

1887-  
1890

1887-1890

UNITED STATES LIGHT-HOUSE ESTABLISHMENT.

DAILY EXPENDITURE

AND

General Annual Account of Stores, Illuminating Apparatus,  
Fixtures, and all other Public Property,

RECEIVED AND CONSUMED

At the *Beacon*  
Light Station *Ontonagon*



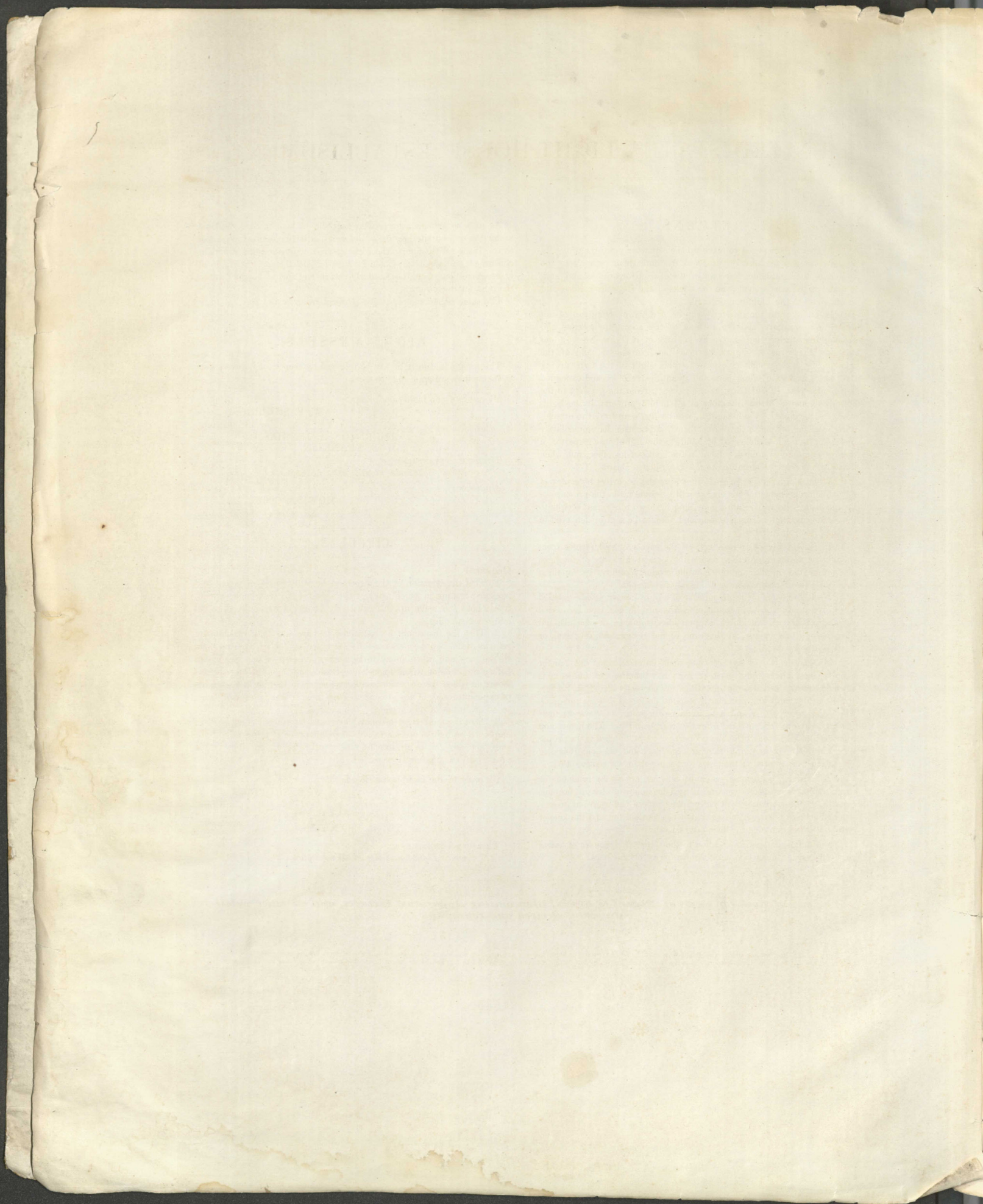
Cataloged by  
Ruth MacFarlane



75.41.2

Mrs. Arnold thank







# UNITED STATES LIGHT-HOUSE ESTABLISHMENT.

## RETURNS.

1. Keepers are required to make up their quarterly returns promptly at the close of each quarter-year, and transmit them by mail to the address of the light-house inspector of the district for examination, and, if found to be correct, entry on the books of the inspector's office, and transmission to the Light-house Board.

2. In addition to the quarterly return of daily expenditures of oil, wicks, and chimneys, and the abstract of the aggregate receipts and expenditures during the quarter, at the back of it (Form No 45), and the annual returns of shipwrecks near the light-station, and of the number of vessels which have passed within sight of the light during the year, a return of all articles and quantities received and expended during the year (Forms Nos. 48*a*, 48*b*, 48*c*), from the 1st July to the 30th June, and a correct inventory of all public property at the light-station at the close of the fiscal year, will be made up from the expenditure books, according to the printed forms, and transmitted immediately thereafter by mail, or delivered by hand, to the light-house inspector of the district, to be examined, entered in the books of his office, and, when found to be correct, transmitted to the Light-house Board.

3. When a light-keeper resigns or is removed, a correct inventory of all public property under his charge will be made up in the presence of his successor, who will retain a copy, and sign two others, as receipts to the retiring keeper (Forms Nos. 46*a* and 46*b*), to be sent or delivered to the light-house inspector.

4. In case of the death of a keeper, the successor will receive from the wife or assistant, or other responsible person in charge of the light at the time, the supplies and other public property, and receipt for them as in the case of resignation or dismissal of a keeper.

5. No light-keeper, or representative of a light-keeper, will be entitled to receive any balance on account of salary until he shall have accounted satisfactorily for all the public property in his charge, or which should have been in his charge, at the time of the resignation, dismissal, or death of the keeper.

6. No keeper should sign receipts upon entering upon duty, or for supplies from the supply vessel, or from any other source, unless he is satisfied that the articles and quantities are correctly stated, as keepers will be held strictly and pecuniarily responsible for all articles and quantities they receipt for, and a subsequent discovery of error in their receipts will not relieve them from this responsibility. The names and quantities of all articles of public property must be entered at the proper places in this book as soon as they are received, and the quantities consumed must be entered at the times of issuing them for consumption.

7. All articles condemned as unfit for use are to be retained for exhibition to the inspector; and no alleged deficiency of utensils, brooms, brushes, or other fixtures, will be supplied unless the worn out or condemned articles are kept and exhibited when called for, and the keeper will be held accountable for their original value.

The attention of keepers is called to the *General Accounts* of stores received and consumed, given on the last pages of this book.

As soon as articles are received they should be entered in the book under the appropriate heading. Before a quarterly return is transmitted to the Inspector, its figures should be entered under the head of articles consumed, and a balance should be struck, which balance should, in all cases, correspond with the quarterly return and should be the basis of the next quarterly return.

The same remarks apply to the *Annual Returns*.

## LIGHT-VESSELS.

The foregoing directions will be followed by keepers of LIGHT-VESSELS so far as they are applicable to them.

By order of the Light-house Board:

W. B. SHUBRICK,  
*Chairman.*

THORNTON A. JENKINS, }  
W. B. FRANKLIN, } *Secretaries.*

TREASURY DEPARTMENT,  
*Office Light-house Board, Sept. 6, 1858.*

Approved:

HOWELL COBB,  
*Secretary of the Treasury.*

## CIRCULAR.

### ORDERED:

1. That the attention of the inspectors be called to the negligent and irregular manner in which many of the light-keepers keep their expenditure books and make up their quarterly returns of expenditures of oil and other supplies.

2. That the inspectors be instructed to have the daily expenditure returns of the light-keepers carefully examined as they are received from the keepers, and, when found to be correct, entered in the office book, before transmission to the Light-house Board, and report all cases to this Board in which there is evidence of negligence in keeping the accounts of expenditures, or of any attempt to keep them by computation of time, or of quantities of oil expended.

3. That the most rigid accountability must be exacted of all persons employed on light-house service for all public property intrusted to their care, and any failure to account satisfactorily for oil or other public property is to be promptly reported.

By order of the Light-house Board:

W. B. SHUBRICK,  
*Chairman.*

THORNTON A. JENKINS, }  
W. B. FRANKLIN, } *Secretaries.*

TREASURY DEPARTMENT,  
*Office Light-house Board, Washington City.*

**See end of Book for General Account of Stores, Illuminating Apparatus, Fixtures, and all other public property, received and consumed.**

NOTE.—Light-keepers are strictly prohibited from making any purchases, or incurring any expenses, on account of the Light-house Establishment, by the Rules and Regulations. No bills or claims will be paid. Light-keepers will make their wants known in time, and, if reasonable, they will be supplied by the inspector or other authorized agent of the Light-house Board.

THORNTON A. JENKINS,  
*Secretary Light-house Board.*



ACCOUNT of Oil, Wicks, and Chimneys expended daily *At the Beacon* Light House, in the month of *August*, 1877, and showing the time of lighting and extinguishing, and the length of time lighted each night.

DAY.	Time of lighting.		Time of extinguishing the light.		Length of time lighted.		Daily quantity of oil consumed in Light-house or Light-vessel lamps.				Number of chimneys broken each night.	Inches of new wick expended.	Quantity of oil taken from butts and set aside for hand and house lamps.	REMARKS ON THE WEATHER. (Dry, damp, rainy, snowy, light wind, moderate breeze, fresh breeze, or gale, &c.)		
	Hour.	Min.	Hour.	Min.	Hour.	Min.	Galls.	Qts.	Pints.	Gills.						
1	7	20	4	57	9	37									<i>Journal notes for June 19<sup>th</sup> N</i>	
2	7	14	4	43	9	39										
3	7	18	4	54	9	36										
4	7	26	4	55	9	29										1 <sup>st</sup> <i>Clearing beacon lens all day weather cont</i> <i>inues cold with fresh wind from N E try</i> <i>haptic arrived from Duluth during night with</i> <i>speed for aradge bridge began working 3 P.M</i>
5	7	09	5	02	9	53										
6	7	14	4	57	9	43										2 <sup>nd</sup> <i>Painting outside of beacon all day bridge</i> <i>working on shift steadily Wind fresh breeze N E</i>
7	7	13	4	58	9	45										
8	7	12	4	59	9	47										3 <sup>rd</sup> <i>Still working at beacon Have son Bud painting</i> <i>outside cannot stain high elevations since I</i> <i>was emstruck two years ago Wind N.E steady br</i>
9	7	06	4	50	9	34										
10	7	10	4	47	9	37										4 <sup>th</sup> <i>Still painting at beacon &amp; m painting</i> <i>roof of oil house P.M Wind southward very cool</i>
11	7	08	5	3	9	55										
12	7	06	5	4	9	58										5 <sup>th</sup> <i>Cleaning plate glass in main lantern 2 m</i> <i>quite sick P.M unable to work Electric</i> <i>light extinguished at beacon 5<sup>th</sup> P.M had to put in oil lamp</i>
13	6	50	5	5	10	15										
14	6	50	5	6	10	16										6 <sup>th</sup> <i>Weather quite chilly nothing of import occurring</i> <i>Electricity again on to night</i>
15	7	02	5	7	10	05										
16	7	0	5	0	10	00										7 <sup>th</sup> <i>On the sick list Remains incessantly all day</i> <i>very swift current on in river result of rain</i>
17	6	57	5	9	10	10										
18	6	57	5	10	10	26										8 <sup>th</sup> <i>Very cold rain with shot fog during day. wind over</i> <i>ed to N - drudge had to seek shelter at Esau loading dock</i>
19	6	56	5	01	10	05										
20	6	58	5	4	10	09										9 <sup>th</sup> <i>Sick all day had to go to bed from effects of rain</i>
21	6	53	5	13	10	20										
22	6	57	5	14	10	23										
23	6	49	5	10	10	21										
24	6	48	5	17	10	29										
25	6	36	5	18	10	42										
26	6	45	5	19	10	34										
27	6	43	5	20	10	37										
28	6	41	5	21	10	40										
29	6	40	5	17	10	37										
30	6	36	5	23	10	45										
31	6	36	5	24	10	48										
							43	1	1	2		7/2				

Total quantity consumed in the lamp of the Light- <i>Beacon</i> .....	GALLONS.	QUARTS.	PINTS.
Total quantity consumed this month for use in the dwelling-house or quarters, and other hand lamps, from oil butts.....	4	3	1 1/4
Total quantity expended in this month.....		3	1 1/4

Order of Lens *6* Kind of Light *F R*  
 Number of Wicks in burner *One* Diameter of outer burner *One inch*

Written by me— *J. Logan* *J. Logan*, Light-Keeper.  
Ass't Keeper.



ACCOUNT of Oil, Wicks, and Chimneys expended daily *at Beacon* Light House in the month of *September*, 18*87*,  
and showing the time of lighting and extinguishing, and the length of time lighted each night.

DAY.	Time of lighting.		Time of extinguishing the light.		Length of time lighted.		Daily quantity of oil consumed in Light-house or Light-vessel lamps.				Number of chimneys broken each night.	Inches of new wick expended.	Quantity of oil taken from butts and set aside for hand and house lamps.	REMARKS ON THE WEATHER. (Dry, damp, rainy, snowy, light wind, moderate breeze, fresh breeze, or gale, &c.)		
	Hour.	Min.	Hour.	Min.	Hour.	Min.	Galls.	Qts.	Pints.	Gills.						
1	6	25	5	25	10	49								7	June Sick abed most of day Steam barge Marshal Butte	
2	6	26	5	26	10	53									10-78 in for lumber 8 am	
3	6	27	5	27	10	56										
4	6	28	5	20	10	58									11 Barge Butters cleared 3 P.M partly lumber laden	
5	6	29	5	29	11	1									painting oil house 2 m + main lantern outside P.M	
6	6	30	5	30	11	4									Keeper Ralph Heater of 14 mile point ashore	
7	6	31	5	31	11	6										
8	6	32	5	38	11	15									12 Barge L L Barth in 2 m loaded 225 m of lumber	
9	6	33	5	33	11	12									+ cleared for Duluth 5 P.M Rain during day	
10	6	34	5	34	11	14										
11	6	35	5	35	11	16								Sunday 13	Rain 2 m very cold for this date Finished painting	
12	6	36	5	36	11	19									oil house P.M	
13	6	37	5	37	11	22										
14	6	39	5	38	11	26									14 Painting screen doors + windows all day	
15	6	40	5	42	11	32									Rain P.M with fresh wind variable McDonald	
16	6	41	5	41	11	32									owner of drudge here from Duluth	
17	6	42	5	42	11	35									15 Painted furnace 2 m + cleaning utensils P.M	
18	6	43	5	43	11	37									Rained quite hard 11 <sup>45</sup> 2 m with fresh wind N W	
19	6	44	5	44	11	40									Steam Barge Cherokee in for br 9 <sup>45</sup> P.M	
20	6	45	5	45	11	43									16	
21	6	46	5	49	11	48									Painting in tower 2 m cleaning + arranging paint P.M	
22	5	47	5	47	11	47									Rained during P.M weather very cold	
23	5	48	5	43	11	46									6 36	
24	5	49	5	49	11	54									17 Rained almost incessantly all day Barge chero	
25	5	50	5	50	11	57									- kee cleared with partial load of lumber for Duluth	
26	5		5	57	12	00									5 P.M Drudge continues to work 8 hours each day	
27	5		5	52	12	2										
28	5		5	54	12	6									18 Painting inside of dwelling rained	
29	5		5	55	12	9									during noon hour quite brisk	
30	5		5	58	12	11										
							5	1	1	2					19	Painted inside of tower note station
											6	43			in good order	

	GALLONS.	QUARTS.	PINTS.
Total quantity consumed in the lamp of the Light-.....	5	7	1 1/2
Total quantity consumed this month for use in the dwelling-house or quarters, and other hand lamps, from oil butts.....			
Total quantity expended in this month.....	5	1	1 1/2

Order of Lens *Sixth* Kind of Light *Q R*  
 Number of Wicks in burner *One* Diameter of outer burner *1 inch*  
 Written by me—  
*James Organ*

*James Organ*, Light-Keeper.  
 Ass't Keeper.



ACCOUNT of Oil, Wicks, and Chimneys expended daily at Autunagon Beacon Light House, in the month of October, 1887, and showing the time of lighting and extinguishing, and the length of time lighted each night.

DAY.	Time of lighting.		Time of extinguishing the light.		Length of time lighted.		Daily quantity of oil consumed in Light-house or Light-vessel lamps.			Number of chimneys broken each night.	Inches of new wick expended.	Quantity of oil taken from butts and set aside for hand and house lamps.	REMARKS ON THE WEATHER. (Dry, damp, rainy, snowy, light wind, moderate breeze, fresh breeze, or gale, &c.)
	Hour.	Min.	Hour.	Min.	Hour.	Min.	Galls.	Qts.	Pints.				
1	5	42	5	57	12	15			1	2	7/8		<p><i>Journal notes for June</i></p> <p>Sunday 20 Weather continues cold. Drudge digging at entrance to pier yesterday</p> <p>21<sup>st</sup> Drudge continues working steadily 8 hours each day. Recv mail for Inspect<sup>r</sup> Woodruff to day. Painting in tower all day</p> <p>22<sup>nd</sup> General cleaning all day Drudge could not work. 2m wind too fresh from W. worked P.M.</p> <p>23 Painting water closet most of day. Recv more mail to day for Inspect<sup>r</sup> on Amaranth 9:30 P.M. Amaranth now arriving in port. Examined June 24<sup>th</sup> Edw. Woodruff Inspect<sup>r</sup></p>
2	5	41	5	57	12	18			1	2	10		
3	5	39	5	59	12	20			1	2	10		
4	5	37	6	0	12	23			1	2	10		
5	5	35	6	1	12	26			1	2	10		
6	5	33	6	3	12	29			1	2	10		
7	5	32	6	4	12	31			1	2	10		
8	5	30	6	5	12	34			1	2	11		
9	5	29	6	6	12	38			1	2	11		
10	5	27	6	7	12	40			1	2	11		
11	5	25	6	8	12	43			1	2	24		
12	5	24	6	9	12	45			1	2	24		
13	5	22	6	10	12	48			1	2	29		
14	5	20	6	12	12	51			1	2	29		
15	5	19	6	13	12	49			1	2	21		
16	5	17	6	14	12	57			1	2	33		
17	5	16	6	15	13	0			1	2	33		
18	5	14	6	16	13	2			1	2	37		
19	5	13	6	17	13	5			1	2	37		
20	5	11	6	24	12	57			1	2	26		
21	5	9	6	20	13	11			1	2	46		
22	5	8	6	21	13	15			1	2	46		
23	5	7	6	22	13	16			1	2	46		
24	4	58	6	23	13	28			1	2	58		
25	5	4	6	25	13	21			1	2	55		
26	5	2	6	26	13	24			1	2	55		
27	5	1	6	27	13	26			1	2	60		
28	4	50	6	28	13	49			1	2	78		
29	4	58	6	30	13	31			1	2	64		
30	4	57	6	31	13	34			1	2	64		
31	4	55	6	32	13	37			1	2	65		
							6	0	10	3/4			

	GALLONS.	QUARTS.	PINTS.
Total quantity consumed in the lamp of the Light- <u>Beacon</u> .....	6	0	1 3/4
Total quantity consumed this month for use in the dwelling-house or quarters, and other hand lamps, from oil butts.....			
Total quantity expended in this month.....			

Order of Lens 6<sup>th</sup> Kind of Light P. R  
 Number of Wicks in burner One Diameter of outer burner 1 inch  
 Written by me— W. Logan  
Keeper

W. Logan, Light-Keeper.  
 \_\_\_\_\_, Ass't Keeper.



ACCOUNT of Oil, Wicks, and Chimneys expended daily *at Antagon Beacon Light House*, in the month of *November*, 18*77*, and showing the time of lighting and extinguishing, and the length of time lighted each night.

DAY.	Time of lighting.		Time of extinguishing the light.		Length of time lighted.		Daily quantity of oil consumed in Light-house or Light-vessel lamps.				Number of chimneys broken each night.	Inches of new wick expended.	Quantity of oil taken from butts and set aside for hand and house lamps.	REMARKS ON THE WEATHER. (Dry, damp, rainy, snowy, light wind, moderate breeze, fresh breeze, or gale, &c.)
	Hour.	Min.	Hour.	Min.	Hour.	Min.	Galls.	Qts.	Pints.	Gills.				
1	4	54	6	33	13	39	1		2 <sup>45</sup>				<i>4 1/2</i>	
2	4	53	6	34	13	44	1		2 <sup>65</sup>					
3	4	57	6	36	13	45	1		2 <sup>69</sup>	11				
4	4	56	6	37	13	47	1		2 <sup>69</sup>					
5	4	54	6	38	13	39	1		2 <sup>74</sup>					
6	4	48	6	39	13	57	1		2 <sup>74</sup>					
7	4	47	6	41	13	54	1		2 <sup>74</sup>					
8	4	46	6	42	13	57	1		2 <sup>75</sup>					
9	4	45	6	43	13	59	1		2 <sup>75</sup>					
10	4	44	6	44	14	1	1		2 <sup>83</sup>					
11	4	43	6	45	14	4	1		2 <sup>83</sup>					
12	4	42	6	47	14	6	1		2 <sup>87</sup>					
13	4	41	6	48	14	8	1		2 <sup>87</sup>					
14	4	40	6	49	14	10	1		2 <sup>92</sup>					
15	4	39	6	50	14	12	1		2 <sup>92</sup>	1				
16	4	38	6	52	14	14	1		2 <sup>98</sup>					
17	4	37	6	53	14	16	1		2 <sup>98</sup>					
18	4	36	6	55	14	18	1		2					
19	4	25	6	56	14	29	1		3 <sup>0</sup>					
20	4	34	6	57	14	23	1		3					
21	4	34	6	58	14	24	1		3 <sup>05</sup>					
22	4	33	7	0	14	26	1		3 <sup>05</sup>					
23	4	32	7	1	14	25	1		3 <sup>05</sup>					
24	4	31	7	2	14	30	1		3 <sup>05</sup>					
25	4	31	7	3	14	32	1		3 <sup>9</sup>					
26	4	31	7	4	14	33	1		3 <sup>9</sup>	1				
27	4	20	7	5	14	44	1		3 <sup>20</sup>					
28	4	30	7	6	14	06	1		3 <sup>05</sup>					
29	4	30	7	7	14	37	1		3 <sup>18</sup>					
30	4	29	7	8	14	39	1		3 <sup>18</sup>					
31														
							6	1	1	3 <sup>1/2</sup>	4	9 <sup>1/2</sup>		

	GALLONS.	QUARTS.	PINTS.
Total quantity consumed in the lamp of the Light- <i>House Beacon</i> .....	6	1	1 <sup>14</sup> / <sub>16</sub>
Total quantity consumed this month for use in the dwelling-house or quarters, and other hand lamps, from oil butts.....			
Total quantity expended in this month.....	6	1	1 <sup>14</sup> / <sub>16</sub>

{ Order of Lens *6"* Kind of Light *F.R.*  
 { Number of Wicks in burner *One* Diameter of outer burner *1 inch*  
 Written by me— *J. A. Morgan*

*J. A. Morgan*, Light-Keeper.  
 \_\_\_\_\_, Ass't Keeper.



ACCOUNT of Oil, Wicks, and Chimneys expended daily *at Outeragon Beacon Light House*, in the month of *April*, 18*77*, and showing the time of lighting and extinguishing, and the length of time lighted each night.

DAY.	Time of lighting.		Time of extinguishing the light.		Length of time lighted.		Daily quantity of oil consumed in Light-house or Light-vessel lamps.				Number of chimneys broken each night.	Inches of new wick expended.	Quantity of oil taken from butts and set aside for hand and house lamps.	REMARKS ON THE WEATHER. (Dry, damp, rainy, snowy, light wind, moderate breeze, fresh breeze, or gale, &c.)
	Hour.	Min.	Hour.	Min.	Hour.	Min.	Galls.	Qts.	Pints.	Gills.				
1														
2														
3														
4														
5														
6														
7														
8														
9														
10														
11														
12														
13														
14														
15														
16														
17														
18														
19														
20														
21														
22														
23														
24														
25	7	23	4	30	10	13		1	1					
26	7	24	4	30	10	11		1	1					
27	7	25	4	29	10	8		1	1		5			
28	7	26	4	28	10	4		1	1					
29	7	27	4	27	10	1		1	1					
30	7	25	4	26	9	59		1	3/4					
31								3	1 3/4		5			

	GALLONS.	QUARTS.	PINTS.
Total quantity consumed in the lamp of the Light- <i>Beacon</i> .....		3	7/16
Total quantity consumed this month for use in the dwelling-house or quarters, and other hand lamps, from oil butts .....			
Total quantity expended in this month .....		3	7/16

Order of Lens *6"* Kind of Light *FR*  
 Number of Wicks in burner *One* Diameter of outer burner *1 inch*  
 Written by me— *Jac Morgan*  
*Keeper*

*Jac Morgan*, Light-Keeper.  
 \_\_\_\_\_, Ass't Keeper.



ACCOUNT of Oil, Wicks, and Chimneys expended daily *W. Outrigger Beacon Light House*, in the month of *May*, 188*8*, and showing the time of lighting and extinguishing, and the length of time lighted each night.

DAY.	Time of lighting.		Time of extinguishing the light.		Length of time lighted.		Daily quantity of oil consumed in Light-house or Light-vessel lamps.				Number of chimneys broken each night.	Inches of new wick expended.	Quantity of oil taken from butts and set aside for hand and house lamps.	REMARKS ON THE WEATHER. (Dry, damp, rainy, snowy, light wind, moderate breeze, fresh breeze, or gale, &c.)	
	Hour.	Min.	Hour.	Min.	Hour.	Min.	Galls.	Qs.	Pints.	Gills.					
1	6	59	4	55	9	56				1	3/4		10		
2	7	0	4	54	9	53				1	3/4				
3	7	1	4	53	9	51				1	3/4				
4	7	2	4	51	9	49				1	3/4				
5	7	3	4	50	9	47				1	3/4				
6	7	4	4	49	9	44				1	3/4				
7	7	5	4	48	9	42				1	3/4				
8	7	6	4	46	9	40				1	3/4				
9	7	7	4	45	9	38				1	3/4				
10	7	9	4	44	9	35				1	3/4				
11	7	10	4	43	9	33				1	3/4				
12	7	11	4	42	9	31				1	3/4				
13	7	12	4	41	9	29				1	3/4				
14	6	57	4	40	9	44				1	1				
15	7	14	4	39	9	25				1	3/4				
16	7	15	4	38	9	23				1	1/2				
17	7	16	4	37	9	21				1	1/2				
18	7	17	4	36	9	19				1	1/2				
19	7	18	4	35	9	17				1	1/2				
20	7	19	4	34	9	15				1	1/2				
21	7	20	4	33	9	13				1	1/4				
22	7	21	4	32	9	11				1	1/4	1			
23	7	22	4	31	9	9				1	1/4				
24	7	23	4	31	9	8				1	1/4				
25	7	23	4	30	9	6				1	1/4				
26	7	24	4	30	9	4				1	1/4				
27	7	25	4	29	9	3				1	1/4				
28	7	26	4	28	9	1				1	1/2				
29	7	27	4	27	9	0				1	1/4				
30	7	28	4	27	8	59				1	1/4				
31	7	29	4	26	8	57				1	1/4				
							4	1	1	0	3/4	1	10		

	GALLONS.	QUARTS.	PINTS.
Total quantity consumed in the lamp of the Light- <i>Beacon</i> .....	4	1	1 3/8
Total quantity consumed this month for use in the dwelling-house or quarters, and other hand lamps, from oil butts.....			
Total quantity expended in this month.....	4	1	1 3/8

Order of Lens *Sixth* Kind of Light *FR*  
 Number of Wicks in burner *One* Diameter of outer burner *1 inch*  
 Written by me—  
*Jas Logan*  
*Keeper*

*Jas Logan*, Light-Keeper.  
 \_\_\_\_\_, Ass't Keeper.



ACCOUNT of Oil, Wicks, and Chimneys expended daily at *Autonagon Beacon* Light House, in the month of *June*, 18*88*, and showing the time of lighting and extinguishing, and the length of time lighted each night.

DAY.	Time of lighting.		Time of extinguishing the light.		Length of time lighted.		Daily quantity of oil consumed in Light-house or Light-vessel lamps.				Number of chimneys broken each night.	Inches of new wick expended.	Quantity of oil taken from butts and set aside for hand and house lamps.	REMARKS ON THE WEATHER. (Dry, damp, rainy, snowy, light wind, moderate breeze, fresh breeze, or gale, &c.)	
	Hour.	Min.	Hour.	Min.	Hour.	Min.	Galls.	Qs.	Pints.	Gills.					
1	7	29	4	26	8	55			1	1/4			5		
2	7	30	4	25	8	55			1	1/4					
3	7	31	4	25	8	54			1	1/4	1				
4	7	32	4	24	8	52			1	1/4					
5	7	32	4	24	8	52			1	1/4					
6	7	33	4	24	8	51			1	1/4					
7	7	33	4	24	8	50			1	1/4					
8	7	34	4	23	8	49			1	1/4					
9	7	35	4	23	8	48			1	1/4					
10	7	35	4	23	8	47			1	1/4					
11	7	36	4	23	8	46			1	1/4					
12	7	36	4	23	8	45			1	1/4					
13	7	36	4	23	8	45			1	1/4					
14	7	37	4	23	8	44			1	1/4					
15	7	38	4	23	8	44			1	1/4					
16	7	38	4	23	8	44			1	1/4					
17	7	38	4	23	8	43			1	1/4					
18	7	39	4	23	8	43			1	1/4					
19	7	39	4	23	8	43			1	1/4					
20	7	40	4	23	8	43			1	1/4					
21	7	40	4	23	8	43			1	1/4					
22	7	40	4	23	8	43			1	1/4					
23	7	40	4	23	8	43			1	1/4			5		
24	7	40	4	24	8	43			1	1/4					
25	7	40	4	24	8	43			1	1/4					
26	7	40	4	24	8	43			1	1/4					
27	7	40	4	25	8	43			1	1/4					
28	7	40	4	26	8	40			1	1/4					
29	7	40	4	28	8	25			1	1/4					
30	7	40	4	28	8	46			1	1/4					
31									4	3	1	3/4	1	10	

	GALLONS.	QUARTS.	PINTS.
Total quantity consumed in the lamp of the Light- <i>House Beacon</i> .....	4	3	17/8
Total quantity consumed this month for use in the dwelling-house or quarters, and other hand lamps, from oil butts.....			
Total quantity expended in this month.....	4	3	17/8

Order of Lens *6"* Kind of Light *FR*  
 Number of Wicks in burner *One* Diameter of outer burner *1 inch*

Written by me—  
*W. Logan*  
 Keeper

....., Light-Keeper.  
 ..... , Ass't Keeper.



ACCOUNT of Oil, Wicks, and Chimneys expended daily *W. Cutterson Beacon* Light House, in the month of *July*, 18*77*, and showing the time of lighting and extinguishing, and the length of time lighted each night.

DAY.	Time of lighting.		Time of extinguishing the light.		Length of time lighted.		Daily quantity of oil consumed in Light-house or Light-vessel lamps.				Number of chimneys broken each night.	Inches of new wick expended.	Quantity of oil taken from butts and set aside for hand and house lamps.	REMARKS ON THE WEATHER. (Dry, damp, rainy, snowy, light wind, moderate breeze, fresh breeze, or gale, &c.)			
	Hour.	Min.	Hour.	Min.	Hour.	Min.	Galls.	Qts.	Pints.	Gills.							
1	7	40	4	27	8	46			1	1/4							
2	7	40	4	27	8	46			1	1/4							
3	7	40	4	28	8	47			1	1/4							
4	7	40	4	28	8	48			1	1/4		5					
5	7	39	4	29	8	50			1	1/4							
6	7	39	4	30	8	50			1	1/4							
7	7	39	4	30	8	51			1	1/4							
8	7	38	4	31	8	52			1	1/4							
9	7	38	4	32	8	53			1	1/4							
10	7	37	4	33	8	52			1	1/4							
11	7	37	4	33	8	56			1	1/4							
12	7	37	4	34	8	58			1	1/4							
13	7	36	4	35	8	55			1	1/4							
14	7	36	4	36	8	59			1	1/4	1						
15	7	35	4	37	9	1			1	1/2							
16	7	34	4	37	9	3			1	1/2							
17	7	34	4	38	9	5			1	1/2							
18	7	33	4	39	9	5			1	1/2							
19	7	32	4	40	9	7			1	1/2							
20	7	31	4	41	9	9			1	1/2							
21	7	31	4	41	9	11			1	1/2							
22	7	30	4	42	9	12			1	1/2							
23	7	29	4	43	9	14			1	1/2							
24	7	28	4	44	9	16			1	1/2							
25	7	27	4	45	9	18			1	1/2							
26	7	26	4	46	9	20			1	1/2							
27	7	25	4	47	9	22			1	1/2							
28	7	24	4	48	9	24			1	1/2		5					
29	7	23	4	49	9	26			1	1/2							
30	7	22	4	50	9	28			1	1/2							
31	7	21	4	57	9	30			1	3/4							
										4	1	0	3/4	1	10		

	GALLONS.	QUARTS.	PINTS.
Total quantity consumed in the lamp of the Light-.....	4	1	3/6
Total quantity consumed this month for use in the dwelling-house or quarters, and other hand lamps, from oil butts.....			
Total quantity expended in this month.....	4	1	3/6

{ Order of Lens *6* Kind of Light *FR*  
 { Number of Wicks in burner *One* Diameter of outer burner *1 inch*

Written by me—  
*J. Morgan*  
*Keeper*

*J. Morgan*, Light-Keeper.  
 \_\_\_\_\_, Ass't Keeper.



ACCOUNT of Oil, Wicks, and Chimneys expended daily *at Octagon Beacon Light House* in the month of *August*, 1888, and showing the time of lighting and extinguishing, and the length of time lighted each night.

DAY.	Time of lighting.		Time of extinguishing the light.		Length of time lighted.		Daily quantity of oil consumed in Light-house or Light-vessel lamps.				Number of chimneys broken each night.	Inches of new wick expended.	Quantity of oil taken from butts and set aside for hand and house lamps.	REMARKS ON THE WEATHER. (Dry, damp, rainy, snowy, light wind, moderate breeze, fresh breeze, or gale, &c.)
	Hour.	Min.	Hour.	Min.	Hour.	Min.	Galls.	Qts.	Pints.	Gills.				
1	7	20	4	52	9	32			1	3/4				
2	7	19	4	53	9	35			1	3/4				
3	7	17	4	52	9	37			1	3/4	1			
4	7	16	4	55	9	39			1	3/4				
5	7	14	4	56	9	41			1	3/4				
6	7	13	4	57	9	43			1	3/4				
7	7	12	4	58	9	46			1	3/4				
8	7	11	4	59	9	48			1	3/4	5			
9	7	10	5	0	9	50			1	3/4				
10	7	8	5	2	9	53			1	3/4				
11	7	6	5	3	9	55			1	3/4				
12	7	4	5	4	9	57			1	3/4				
13	7	3	5	5	10	0			1	1				
14	7	2	5	6	10	2			1	1				
15	7	0	5	7	10	5			1	1				
16	7	59	5	8	10	7			1	1				
17	6	56	5	9	10	10			1	1				
18	6	57	5	10	10	13			1	1				
19	6	55	5	11	10	16			1	1	1			
20	6	53	5	12	10	18			1	1				
21	6	51	5	13	10	21			1	1				
22	6	49	5	14	10	23			1	1				
23	6	48	5	15	10	26			1	1				
24	6	46	5	17	10	28			1	1 1/4				
25	6	45	5	18	10	31			1	1 1/4				
26	6	43	5	19	10	34			1	1 1/4				
27	6	41	5	20	10	36			1	1 1/4				
28	6	41	5	21	10	39			1	1 1/4				
29	6	40	5	22	10	42			1	1 1/4				
30	6	55	5	23	10	44			1	1 1/4				
31	6	36	5	24	10	47			1	1 1/4	5			
							4	2	0	2	2	10		

	GALLONS.	QUARTS.	PINTS.
Total quantity consumed in the lamp of the <i>Beacon House</i> .....	4	2	1/2
Total quantity consumed this month for use in the dwelling-house or quarters, and other hand lamps, from oil butts.....			
Total quantity expended in this month.....		2	1/2

Order of Lens *6* Kind of Light *F R*  
 Number of Wicks in burner *one* Diameter of outer burner *1 inch*  
 Written by me—  
*J. Morgan*  
*Keeper*

*J. Morgan*, Light-Keeper.  
 \_\_\_\_\_, Ass't Keeper.



ACCOUNT of Oil, Wicks, and Chimneys expended daily at Antigon Beacon Light House, in the month of September, 1877, and showing the time of lighting and extinguishing, and the length of time lighted each night.

DAY.	Time of lighting.		Time of extinguishing the light.		Length of time lighted.		Daily quantity of oil consumed in Light-house or Light-vessel lamps.				Number of chimneys broken each night.	Inches of new wick expended.	Quantity of oil taken from butts and set aside for hand and house lamps.	REMARKS ON THE WEATHER. (Dry, damp, rainy, snowy, light wind, moderate breeze, fresh breeze, or gale, &c.)	
	Hour.	Min.	Hour.	Min.	Hour.	Min.	Galls.	Qts.	Pints.	Gills.					
1	6	35	5	25	10	49			1	1 1/2					
2	6	33	5	26	10	53			1	1 1/2					
3	6	30	5	27	10	58			1	1 1/2		5			
4	6	30	5	28	10	59			1	1 1/2					
5	6	28	5	29	11	1			1	1 1/2					
6	6	26	5	30	11	4			1	1 1/2					
7	6	25	5	31	11	7			1	1 1/2					
8	6	23	5	32	11	10			1	1 1/2					
9	6	21	5	33	11	12			1	1 1/2					
10	6	19	5	34	11	15			1	1 1/2					
11	6	18	5	35	11	18			1	1 1/2					
12	6	16	5	36	11	21			1	1 1/2					
13	6	14	5	37	11	23			1	1 1/2					
14	6	12	5	39	11	26			1	1 1/2					
15	6	10	5	24	11	11			1	1 1/2					
16	6	9	5	27	11	14			1	1 1/2					
17	6	7	5	42	11	34			1	1 3/4	1	5			
18	6	5	5	43	11	38			1	1 3/4					
19	6	4	5	44	11	41			1	1 3/4					
20	6	2	5	45	11	44			1	1 3/4					
21	6	0	5	46	11	46			1	1 3/4					
22	5	55	5	47	11	49			1	1 3/4					
23	5	57	5	48	11	52			1	1 3/4					
24	5	55	5	49	11	55			1	1 3/4					
25	5	53	5	50	11	57			1	1 3/4					
26	5	51	5	51	12	0			1	1 3/4	1				
27	5	50	5	52	12	3			1	2					
28	5	48	5	54	12	6			1	2					
29	5	46	5	55	12	8			1	2					
30	5	44	5	58	12	12			1	2					
31									5	1	0	0	3/4	2	10

	GALLONS.	QUARTS.	PINTS.
Total quantity consumed in the lamp of the <u>Bacon House</u> .....	5	1	3/6
Total quantity consumed this month for use in the dwelling-house or quarters, and other hand lamps, from oil butts.....			
Total quantity expended in this month.....		1	3/6

Order of Lens Sixth Kind of Light PR  
 Number of Wicks in burner one Diameter of outer burner three  
 Written by me— Jas Morgan Keeper

Jas Morgan, Light-Keeper.  
Jas Morgan, Ass't Keeper.



ACCOUNT of Oil, Wicks, and Chimneys expended daily *Antigon Beacon* Light *House*, in the month of *October*, 18*55*, and showing the time of lighting and extinguishing, and the length of time lighted each night.

DAY.	Time of lighting.		Time of extinguishing the light.		Length of time lighted.		Daily quantity of oil consumed in Light-house or Light-vessel lamps.				Number of chimneys broken each night.	Inches of new wick expended.	Quantity of oil taken from butts and set aside for hand and house lamps.	REMARKS ON THE WEATHER. (Dry, damp, rainy, snowy, light wind, moderate breeze, fresh breeze, or gale, &c.)	
	Hour.	Min.	Hour.	Min.	Hour.	Min.	Galls.	Qts.	Pints.	Gills.					
1	5	42	5	57	12	15				1	2				
2	5	41	5	58	12	18				1	2				
3	5	39	5	59	12	20				1	2				
4	5	37	6	0	12	23				1	2		5		
5	5	35	6	1	12	26				1	2				
6	5	33	6	3	12	29				1	2				
7	5	32	6	4	12	31				1	2 1/4				
8	5	30	6	5	12	34				1	2 1/2				
9	5	29	6	6	12	35				1	2 1/2				
10	5	27	6	7	12	40				1	2 1/2				
11	5	25	6	8	12	43				1	2 1/2				
12	5	24	6	9	12	45				1	2 1/2				
13	5	22	6	10	12	48				1	2 1/2				
14	5	20	6	12	12	50				1	2 1/2				
15	5	19	6	13	12	52				1	2 1/2				
16	5	17	6	14	12	57				1	2 1/2				
17	5	16	6	15	13	0				1	2 1/2				
18	5	14	6	16	13	2				1	2 1/2				
19	5	13	6	17	13	5				1	2 1/2	1	5		
20	5	12	6	19	13	7				1	2 1/2				
21	5	11	6	20	13	11				1	2 1/2				
22	5	9	6	21	13	13				1	2 1/2				
23	5	8	6	22	13	16				1	2 1/2				
24	5	8	6	23	13	18				1	2 1/2				
25	5	4	6	25	13	21				1	2 1/2				
26	5	2	6	26	13	24				1	2 1/2				
27	5	1	6	27	13	26				1	2 1/2				
28	5	0	6	28	13	29				1	2 1/2				
29	4	58	6	30	13	31				1	2 1/2				
30	4	57	6	31	13	34				1	2 1/2				
31	4	55	6	32	13	37				1	2 1/2				
							6	1	0	0	1	10			

	GALLONS.	QUARTS.	PINTS.
Total quantity consumed in the lamp of the <i>Beacon Light House</i> .....	6	1	0
Total quantity consumed this month for use in the dwelling-house or quarters, and other hand lamps, from oil butts.....			
Total quantity expended in this month.....	6	1	0

Order of Lens *Sixth* Kind of Light *LR*  
 Number of Wicks in burner *One* Diameter of outer burner *1 inch*  
 Written by me—  
*J. S. Logan*  
*Keeper*

*J. S. Logan*, Light-Keeper.  
 \_\_\_\_\_, Ass't Keeper.



ACCOUNT of Oil, Wicks, and Chimneys expended daily at *Autouagon Beacon* Light House, in the month of *November*, 18 *75*, and showing the time of lighting and extinguishing, and the length of time lighted each night.

DAY.	Time of lighting.		Time of extinguishing the light.		Length of time lighted.		Daily quantity of oil consumed in Light-house or Light-vessel lamps.				Number of chimneys broken each night.	Inches of new wick expended.	Quantity of oil taken from butts and set aside for hand and house lamps.	REMARKS ON THE WEATHER. (Dry, damp, rainy, snowy, light wind, moderate breeze, fresh breeze, or gale, &c.)	
	Hour.	Min.	Hour.	Min.	Hour.	Min.	Galls.	Qts.	Pints.	Gills.					
1	6	35	6	34	13	39			1	2 3/4					
2	6	38	6	36	18	41			1	2 3/4					
3	6	31	6	37	13	45			1	2 3/4			5		
4	6	30	6	38	13	47			1	2 3/4					
5	6	28	6	39	13	49			1	2 3/4					
6	6	26	6	41	13	51			1	2 3/4					
7	6	25	6	42	13	54			1	2 3/4					
8	6	23	6	43	13	57			1	2 3/4					
9	6	21	6	44	13	59			1	2 3/4					
10	6	19	6	45	14	1			1	2 3/4					
11	6	18	6	47	14	4			1	2 3/4					
12	6	16	6	48	14	6			1	2 3/4					
13	6	15	6	49	14	8			1	2 3/4					
14	6	14	6	50	14	10			1	3					
15	6	12	6	52	14	12			1	3	1				
16	6	10	6	53	14	14			1	3					
17	6	7	6	55	14	16			1	3			5		
18	6	5	6	56	14	18			1	3					
19	6	4	6	57	14	21			1	3					
20	6	2	6	58	14	23			1	3					
21	6	0	6	58	14	24			1	3					
22	5	58	7	0	14	26			1	3					
23	5	57	7	1	14	28			1	3					
24	5	55	7	2	14	30			1	3					
25	5	53	7	3	14	32			1	3					
26	5	51	7	4	14	33			1	3					
27	5	50	7	5	14	35			1	3					
28	5	48	7	6	14	36			1	3					
29	5	46	7	7	14	37			1	3					
30	5	44	7	8	14	39			1	3	1	5			
31									6	1	1	2 3/4	2	15	

	GALLONS.	QUARTS.	PINTS.
Total quantity consumed in the lamp of the Light-House Beacon.....	6	1	1 1/6
Total quantity consumed this month for use in the dwelling-house or quarters, and other hand lamps, from oil butts.....			
Total quantity expended in this month.....	6	1	1 1/6

Order of Lens *Sixth* Kind of Light *FR*  
 Number of Wicks in burner *one* Diameter of outer burner *1 inch*  
 Written by me—  
*J. Morgan*  
*Keeper*

*J. Morgan*, Light-Keeper.  
 \_\_\_\_\_, Ass't Keeper.



ACCOUNT of Oil, Wicks, and Chimneys expended daily *W. Cuttorgan Beacon Light House*, in the month of *Dec*, 18*88*, and showing the time of lighting and extinguishing, and the length of time lighted each night.

DAY.	Time of lighting.		Time of extinguishing the light.		Length of time lighted.		Daily quantity of oil consumed in Light-house or Light-vessel lamps.			Number of chimneys broken each night.	Inches of new wick expended.	Quantity of oil taken from butts and set aside for hand and house lamps.	REMARKS ON THE WEATHER. (Dry, damp, rainy, snowy, light wind, moderate breeze, fresh breeze, or gale, &c.)
	Hour.	Min.	Hour.	Min.	Hour.	Min.	Galls.	Qts.	Pints.				
1	4	29	7	9	14	41				1	3		
2	4	29	7	10	16	42				1	3		
3	4	29	7	11	14	42				1	3		
4													
5													
6													
7													
8													
9													
10													
11													
12													
13													
14													
15													
16													
17													
18													
19													
20													
21													
22													
23													
24													
25													
26													
27													
28													
29													
30													
31													

2 1 1

	GALLONS.	QUARTS.	PINTS.
Total quantity consumed in the lamp of the <i>Beacon Light House</i> .....		2	1/4
Total quantity consumed this month for use in the dwelling-house or quarters, and other hand lamps, from oil butts.....			
Total quantity expended in this month.....		2	1/4

Order of Lens *Sixth* Kind of Light *FR*  
 Number of Wicks in burner *One* Diameter of outer burner *1/2 inch*  
 Written by me— *J. C. Morgan*  
*Keeper*

*J. C. Morgan*, Light-Keeper.  
 Ass't Keeper.



ACCOUNT of Oil, Wicks, and Chimneys expended daily at *Autonagon Beacon* Light House, in the month of *April*, 1889, and showing the time of lighting and extinguishing, and the length of time lighted each night.

DAY.	Time of lighting.		Time of extinguishing the light.		Length of time lighted.		Daily quantity of oil consumed in Light-house or Light-vessel lamps.				Number of chimneys broken each night.	Inches of new wick expended.	Quantity of oil taken from butts and set aside for hand and house lamps.	REMARKS ON THE WEATHER. (Dry, damp, rainy, snowy, light wind, moderate breeze, fresh breeze, or gale, &c.)
	Hour.	Min.	Hour.	Min.	Hour.	Min.	Galls.	Qts.	Pints.	Gills.				
1														
2														
3														
4														
5														
6														
7														
8														
9														
10														
11														
12														
13														
14														
15	6	41	5	19	10	39		1	1/4			10		
16	6	42	5	17	10	36		1	1/4					
17	6	43	5	16	10	33		1	1/4					
18	6	44	5	15	10	31		1	1/4					
19	6	45	5	13	10	28		1	1/4					
20	6	47	5	11	10	26		1	1/4					
21	6	48	5	9	10	23		1	1					
22	6	49	5	8	10	21		1	1					
23	6	50	5	7	10	18		1	1					
24	6	57	5	5	10	16		1	1					
25	6	52	5	4	10	13		1	1					
26	6	53	5	2	10	11		1	1					
27	6	54	5	1	10	8		1	1					
28	6	55	5	0	10	4		1	1					
29	6	56	4	59	10	1		1	1					
30	6	57	4	57	9	59		1	1					
31								2	1	1	1/2		10	

	GALLONS.	QUARTS.	PINTS.
Total quantity consumed in the lamp of the <i>Beacon</i> .....	2	1	1 1/8
Total quantity consumed this month for use in the dwelling-house or quarters, and other hand lamps, from oil butts.....			
Total quantity expended in this month.....			

{ Order of Lens *6<sup>th</sup>* Kind of Light *P.R.*  
 { Number of Wicks in burner *one* Diameter of outer burner *1 inch*  
 Written by me— *J. C. Morgan*  
*Keeper*

*J. C. Morgan*, Light-Keeper.  
 \_\_\_\_\_, Ass't Keeper.



ACCOUNT of Oil, Wicks, and Chimneys expended daily at *Autonagon Beacon* Light House, in the month of *May*, 18*97*, and showing the time of lighting and extinguishing, and the length of time lighted each night.

DAY.	Time of lighting.		Time of extinguishing the light.		Length of time lighted.		Daily quantity of oil consumed in Light-house or Light-vessel lamps.				Number of chimneys broken each night.	Inches of new wick expended.	Quantity of oil taken from butts and set aside for hand and house lamps.	REMARKS ON THE WEATHER. (Dry, damp, rainy, snowy, light wind, moderate breeze, fresh breeze, or gale, &c.)
	Hour.	Min.	Hour.	Min.	Hour.	Min.	Galls.	Qts.	Pints.	Gills.				
1	6	0	4	55	9	56			1	3/4				
2	7	1	4	54	9	53			1	3/4				
3	7	2	4	53	9	57			1	3/4				
4	7	3	4	51	9	49			1	3/4				
5	7	4	4	50	9	47			1	3/4		5-		
6	7	5	4	49	9	44			1	3/4				
7	7	6	4	48	9	42			1	3/4				
8	7	7	4	46	9	40			1	3/4				
9	7	9	4	45	9	38			1	3/4				
10	7	10	4	44	9	35			1	3/4				
11	7	11	4	43	9	33			1	3/4				
12	7	12	4	42	9	31			1	3/4				
13	7	13	4	41	9	29			1	1/2				
14	7	14	4	40	9	27			1	1/2				
15	7	15	4	39	9	25			1	1/2				
16	7	16	4	38	9	23			1	1/2				
17	7	17	4	37	9	21			1	1/2				
18	7	18	4	36	9	19			1	1/2				
19	7	19	4	35	9	17			1	1/2		5-		
20	7	20	4	34	9	15			1	1/2	1			
21	7	20	4	33	9	13			1	1/2				
22	7	21	4	32	9	11			1	1/2				
23	7	22	4	31	9	9			1	1/2				
24	7	23	4	31	9	8			1	1/2				
25	7	23	4	30	9	6			1	1/2				
26	7	24	4	30	9	4			1	1/2				
27	7	25	4	29	9	3			1	1/2				
28	7	26	4	28	9	1			1	1/2				
29	7	27	4	27	9	0			1	1/4				
30	7	28	4	27	8	59			1	1/4				
31	7	29	4	26	8	57	4	1	1	13/16	1	10		

	GALLONS.	QUARTS.	PINTS.
Total quantity consumed in the lamp of the <i>Light Beacon Light House</i> .....	4	1	17/16
Total quantity consumed this month for use in the dwelling-house or quarters, and other hand lamps, from oil butts.....			
Total quantity expended in this month.....		1	17/16

Order of Lens *Sixth* Kind of Light *RR*  
 Number of Wicks in burner *One* Diameter of outer burner *1 inch*  
 Written by me—  
*J. Morgan*  
*Keeper*

*Jas. Morgan*, Light-Keeper.  
 \_\_\_\_\_, Ass't Keeper.



ACCOUNT of Oil, Wicks, and Chimneys expended daily at *Outonagon Beacon Light House* in the month of *June*, 18 *77*, and showing the time of lighting and extinguishing, and the length of time lighted each night.

DAY.	Time of lighting.		Time of extinguishing the light.		Length of time lighted.		Daily quantity of oil consumed in Light-house or Light-vessel lamps.				Number of chimneys broken each night.	Inches of new wick expended.	Quantity of oil taken from butts and set aside for hand and house lamps.	REMARKS ON THE WEATHER. (Dry, damp, rainy, snowy, light wind, moderate breeze, fresh breeze, or gale, &c.)
	Hour.	Min.	Hour.	Min.	Hour.	Min.	Galls.	Qts.	Pints.	Gills.				
1	7	29	4	26	8	55			1	1/4				
2	7	30	4	26	8	55			1	1/4				
3	7	31	4	25	8	54			1	1/4			v	
4	7	32	4	24	8	52			1	1/4				
5	7	32	4	24	8	52			1	1/4				
6	7	33	4	24	8	51			1	1/4				
7	7	33	4	24	8	50			1	1/4				
8	7	34	4	23	8	49			1	1/4				
9	7	35	4	23	8	48			1	1/4				
10	7	35	4	23	8	47			1	1/4				
11	7	36	4	23	8	46			1	1/4				
12	7	36	4	23	8	45			1	1/4	1			
13	7	36	4	23	8	45			1	1/4				
14	7	37	4	23	8	44			1	1/4				
15	7	38	4	23	8	44			1	1/4				
16	7	38	4	23	8	44			1	1/4				
17	7	38	4	23	8	43			1	1/4			v	
18	7	39	4	23	8	43			1	1/4				
19	7	39	4	23	8	43			1	1/4				
20	7	40	4	23	8	43			1	1/4				
21	7	40	4	23	8	43			1	1/4				
22	7	40	4	23	8	43			1	1/4				
23	7	40	4	24	8	43			1	1/4				
24	7	40	4	24	8	43			1	1/4				
25	7	40	4	24	8	43			1	1/4				
26	7	40	4	25	8	43			1	1/4	1			
27	7	40	4	25	8	43			1	1/4				
28	7	40	4	25	8	43			1	1/4				
29	7	40	4	26	8	45			1	1/4				
30	7	40	4	26	8	46			1	1/4			v	
31							4	3	1	3/4	2		v	

	GALLONS.	QUARTS.	PINTS.
Total quantity consumed in the lamp of the <i>Beacon House</i> .....	4	3	17/8
Total quantity consumed this month for use in the dwelling-house or quarters, and other hand lamps, from oil butts .....			
Total quantity expended in this month .....	4	3	17/8

Order of Lens *Sixth* Kind of Light *F.R.*  
 Number of Wicks in burner *One* Diameter of outer burner *1 inch*  
 Written by me--  
*Jas. Corigan*  
*Keeper*

*Jas. Corigan*, Light-Keeper.  
 Ass't Keeper.



ACCOUNT of Oil, Wicks, and Chimneys expended daily at Antinagon Beacon Light-house, in the month of July, 1877, and showing the time of lighting and extinguishing, and the length of time lighted each night.

DAY.	Time of lighting.		Time of extinguishing the light.		Length of time lighted.		Daily quantity of oil consumed in Light-house or Light-vessel lamps.				Number of chimneys broken each night.	Inches of new wick expended.	Quantity of oil taken from butts and set aside for hand and house lamps.	REMARKS ON THE WEATHER. (Dry, damp, rainy, snowy, light wind, moderate breeze, fresh breeze, or gale, &c.)
	Hour.	Min.	Hour.	Min.	Hour.	Min.	Galls.	Qts.	Pints.	Gills.				
1	7	40	4	27	8	46			1	1/4				
2	7	40	4	27	8	46			1	1/4				
3	7	40	4	25	8	47			1	1/4				
4	7	40	4	29	8	48			1	1/4				
5	7	39	4	30	8	50			1	1/4				
6	7	39	4	30	8	50			1	1/4				
7	7	39	4	31	8	57			1	1/4				
8	7	38	4	32	8	52			1	1/4				
9	7	38	4	33	8	53			1	1/4				
10	7	37	4	33	8	54			1	1/4				
11	7	37	4	34	8	53			1	1/4				
12	7	37	4	35	8	56			1	1/4				
13	7	36	4	36	8	58			1	1/4		✓		
14	7	35	4	37	8	57			1	1/4				
15	7	35	4	37	9	1			1	1/4				
16	7	34	4	37	9	3			1	1/4				
17	7	33	4	38	9	5			1	1/4				
18	7	33	4	39	9	5			1	1/4				
19	7	32	4	40	9	7			1	1/4				
20	7	31	4	41	9	9			1	1/4				
21	7	31	4	41	9	11			1	1/4				
22	7	30	4	42	9	12			1	1/4				
23	7	29	4	43	9	14			1	1/4				
24	7	28	4	44	9	16			1	1/4				
25	7	27	4	45	9	18			1	1/4				
26	7	26	4	46	9	20			1	1/4				
27	7	25	4	47	9	22			1	1/4				
28	7	24	4	48	9	24			1	1/4				
29	7	23	4	49	9	26			1	1/4				
30	7	22	4	50	9	28			1	1/4		✓		
31	7	21	4	57	9	30	4	0	0	3/4	2	10		

	GALLONS.	QUARTS.	PINTS.
Total quantity consumed in the lamp of the Light-house.....	4	0	7/8
Total quantity consumed this month for use in the dwelling-house or quarters, and other hand lamps, from oil butts.....			
Total quantity expended in this month.....	4	0	7/8

Order of Lens 6 Kind of Light FR  
 Number of Wicks in burner one Diameter of outer burner 1/2 in  
 Written by me— J. Morgan  
Keeper

J. Morgan, Light-Keeper.  
Ass't Keeper.



ACCOUNT of Oil, Wicks, and Chimneys expended daily at *Antigonon Beacon* Light House, in the month of *August*, 18*79*, and showing the time of lighting and extinguishing, and the length of time lighted each night.

DAY.	Time of lighting.		Time of extinguishing the light.		Length of time lighted.		Daily quantity of oil consumed in Light-house or Light-vessel lamps.				Number of chimneys broken each night.	Inches of new wick expended.	Quantity of oil taken from butts and set aside for hand and house lamps.	REMARKS ON THE WEATHER. (Dry, damp, rainy, snowy, light wind, moderate breeze, fresh breeze, or gale, &c.)	
	Hour.	Min.	Hour.	Min.	Hour.	Min.	Galls.	Qts.	Pints.	Gills.					
1	7	20	4	52	9	32			1	1/2					
2	7	19	4	53	9	37			1	1/2					
3	7	18	4	54	9	39			1	1/2					
4	7	17	4	55	9	41			1	1/2					
5	7	16	4	52	9	43			1	1/2					
6	7	14	4	57	9	46			1	1/2					
7	7	13	4	58	9	48			1	1/2					
8	7	12	4	59	9	50			1	1/2					
9	7	11	5	0	9	53			1	1/2					
10	7	10	5	2	9	55			1	1/2					
11	7	8	5	3	9	57			1	1/2			5		
12	7	6	5	4	9	0			1	1/2					
13	7	4	5	5	10	2			1	3/4					
14	7	3	5	6	10	5			1	3/4					
15	7	2	5	7	10	7			1	3/4					
16	7	0	5	8	10	10			1	3/4					
17	6	59	5	9	10	13			1	3/4					
18	6	57	5	10	10	16			1	3/4					
19	6	56	5	11	10	18			1	3/4					
20	6	55	5	12	10	21			1	3/4					
21	6	53	5	13	10	23			1	3/4					
22	6	51	5	14	10	26			1	3/4					
23	6	49	5	15	10	28			1	3/4					
24	6	48	5	17	10	30			1	1					
25	6	46	5	18	10	31			1	1					
26	6	45	5	19	10	34			1	1	1		5		
27	6	43	5	20	10	31			1	1					
28	6	41	5	21	10	33			1	1					
29	6	40	5	22	10	42			1	1					
30	6	38	5	23	10	44			1	1					
31	6	36	5	24	10	47			1	1					
							4	2	0	2	1	10			

	GALLONS.	QUARTS.	PINTS.
Total quantity consumed in the lamp of the <i>Beacon House</i> .....	4	2	1/2
Total quantity consumed this month for use in the dwelling-house or quarters, and other hand lamps, from oil butts.....			
Total quantity expended in this month.....	4	2	1/2

Order of Lens *Sixth* Kind of Light *F.R.*  
 Number of Wicks in burner *one* Diameter of outer burner *one*

Written by me—

*J. Morgan*  
*Keeper*

*Jas Morgan*, Light-Keeper.  
 \_\_\_\_\_, Ass't Keeper.



ACCOUNT of Oil, Wicks, and Chimneys expended daily at *Antigonish Beacon* Light House, in the month of *September*, 18 *87*, and showing the time of lighting and extinguishing, and the length of time lighted each night.

DAY.	Time of lighting.		Time of extinguishing the light.		Length of time lighted.		Daily quantity of oil consumed in Light-house or Light-vessel lamps.				Number of chimneys broken each night.	Inches of new wick expended.	Quantity of oil taken from butts and set aside for hand and house lamps.	REMARKS ON THE WEATHER. (Dry, damp, rainy, snowy, light wind, moderate breeze, fresh breeze, or gale, &c.)	
	Hour.	Min.	Hour.	Min.	Hour.	Min.	Galls.	Qts.	Pints.	Gills.					
1	6	35	5	25	10	49			1	1					
2	6	33	5	26	10	53			1	1					
3	6	31	5	27	10	56			1	1					
4	6	30	5	28	10	59			1	1					
5	6	28	5	29	11	1			1	1					
6	6	26	5	30	11	4			1	1					
7	6	25	5	31	11	7			1	1					
8	6	23	5	32	11	10			1	1		5			
9	6	21	5	33	11	12			1	1					
10	6	19	5	34	11	15			1	1					
11	6	18	5	35	11	18			1	1					
12	6	16	5	36	11	21			1	1					
13	6	14	5	37	11	23			1	1					
14	6	12	5	38	11	26			1	1					
15	6	10	5	39	11	29			1	1					
16	6	9	5	41	11	32			1	1					
17	6	7	5	42	11	34			1	1	1				
18	6	5	5	43	11	35			1	1					
19	6	4	5	44	11	37			1	1					
20	6	2	5	45	11	40			1	1					
21	6	0	5	46	11	43			1	1					
22	5	58	5	47	11	44			1	1		5			
23	5	57	5	48	11	47			1	1 1/4					
24	5	55	5	49	11	50			1	1 1/2					
25	5	53	5	50	11	53			1	1 1/2					
26	5	52	5	51	12	0			1	1 1/4					
27	5	50	5	52	12	3			1	1 1/2					
28	5	48	5	53	12	6			1	1 1/2					
29	5	46	5	54	12	8			1	1 1/2					
30	5	44	5	55	12	12			1	1 1/2					
31															
							4	3	0	2	1	10			

	GALLONS.	QUARTS.	PINTS.
Total quantity consumed in the lamp of the <i>Beacon</i> Light-House.....	4	3	1/2
Total quantity consumed this month for use in the dwelling-house or quarters, and other hand lamps, from oil butts.....			
Total quantity expended in this month.....	4	3	1/2

Order of Lens *Fifth* Kind of Light *9 R*  
 Number of Wicks in burner *One* Diameter of outer burner *1/2 inch*

Written by me—

*James Logan*  
 Keeper

*James Logan*, Light-Keeper.  
 Ass't Keeper.



ACCOUNT of Oil, Wicks, and Chimneys expended daily at *Autonaron Beacon Light House*, in the month of *October*, 18 *77*, and showing the time of lighting and extinguishing, and the length of time lighted each night.

DAY.	Time of lighting.		Time of extinguishing the light.		Length of time lighted.		Daily quantity of oil consumed in Light-house or Light-vessel lamps.				Number of chimneys broken each night.	Inches of new wick expended.	Quantity of oil taken from butts and set aside for hand and house lamps.	REMARKS ON THE WEATHER. (Dry, damp, rainy, snowy, light wind, moderate breeze, fresh breeze, or gale, &c.)
	Hour.	Min.	Hour.	Min.	Hour.	Min.	Galls.	Qts.	Pints.	Gills.				
1	5	42	5	57	12	15			1	1 1/2				
2	5	41	5	58	12	18			1	1 1/2				
3	5	39	5	59	12	20			1	1 1/2				
4	5	37	6	0	12	23			1	1 1/2				
5	5	35	6	1	12	25			1	1 1/2				
6	5	33	6	3	12	29			1	1 1/2		5		
7	5	32	6	4	12	31			1	1 1/2				
8	5	30	6	5	12	34			1	1 1/2				
9	5	29	6	6	12	38			1	1 1/2				
10	5	27	6	7	12	40			1	1 1/2				
11	5	25	6	8	12	43			1	1 1/2				
12	5	24	6	9	12	45			1	1 1/2				
13	5	22	6	10	12	48			1	1 1/2				
14	5	20	6	12	12	51			1	1 1/2				
15	5	19	6	13	12	54			1	1 1/2				
16	5	17	6	14	12	57			1	1 1/2				
17	5	16	6	15	13	0			1	1 1/2				
18	5	14	6	16	13	2			1	1 1/2				
19	5	13	6	17	13	5			1	1 1/2				
20	5	11	6	19	13	7			1	1 1/2				
21	5	9	6	20	13	11			1	1 1/2		5		
22	5	8	6	21	13	13			1	1 1/2				
23	5	7	6	22	13	16			1	1 1/2	1			
24	5	6	6	23	13	18			1	1 1/2				
25	5	4	6	25	13	21			1	1 1/2				
26	5	2	6	26	13	24			1	1 1/2				
27	5	1	6	27	13	26			1	1 1/2				
28	5	0	6	28	13	29			1	1 1/2				
29	4	57	6	30	13	31			1	2				
30	4	57	6	31	13	34			1	2				
31	4	55	6	32	13	37	6	0	1	3/4	1	10		

Total quantity consumed in the lamp of the Light- <i>Beacon House</i> .....	GALLONS.	QUARTS.	PINTS.
Total quantity consumed this month for use in the dwelling-house or quarters, and other hand lamps, from oil butts.....			
Total quantity expended in this month.....			

{ Order of Lens *Sixth* Kind of Light *FR*  
 { Number of Wicks in burner *one* Diameter of outer burner *one inch*  
 Written by me—  
*Jas Logan*  
 Keeper

*Jas Logan*, Light-Keeper.  
 Ass't Keeper.



ACCOUNT of Oil, Wicks, and Chimneys expended daily at *Cutwagon Beacon Light House*, in the month of *November*, 18*87*, and showing the time of lighting and extinguishing, and the length of time lighted each night.

DAY.	Time of lighting.		Time of extinguishing the light.		Length of time lighted.		Daily quantity of oil consumed in Light-house or Light-vessel lamps.				Number of chimneys broken each night.	Inches of new wick expended.	Quantity of oil taken from butts and set aside for hand and house lamps.	REMARKS ON THE WEATHER. (Dry, damp, rainy, snowy, light wind, moderate breeze, fresh breeze, or gale, &c.)	
	Hour.	Min.	Hour.	Min.	Hour.	Min.	Galls.	Qts.	Pints.	Gills.					
1	4	57	6	34	13	39			1	2					
2	4	53	6	36	13	41			1	2					
3	4	57	6	37	13	45			1	2					
4	4	50	6	38	13	47			1	2		5			
5	4	49	6	39	13	49			1	2					
6	4	47	6	40	13	51			1	2					
7	4	44	6	42	13	54			1	2	1				
8	4	45	6	43	13	57			1	2					
9	4	44	6	44	13	59			1	2					
10	4	43	6	45	14	1			1	2 1/4					
11	4	42	6	46	14	3			1	2 1/4					
12	4	42	6	47	14	6			1	2 1/4					
13	4	41	6	47	14	8			1	2 1/4					
14	4	40	6	49	14	10			1	2 1/4					
15	4	39	6	50	14	12			1	2 1/4					
16	4	38	6	52	14	14			1	2 1/4					
17	4	37	6	53	14	16			1	2 1/4	1	5			
18	4	38	6	55	14	18			1	2 1/4					
19	4	35	6	53	14	21			1	2 1/4					
20	4	34	6	57	14	23			1	2 1/4					
21	4	33	6	58	14	25			1	2 1/4					
22	4	32	7	0	14	26			1	2 1/4					
23	4	31	7	1	14	28			1	2 1/4					
24	4	31	7	2	14	30			1	2 1/4					
25	4	31	7	3	14	32			1	2 1/4					
26	4	31	7	4	14	33			1	2 1/4					
27	4	30	7	5	14	35			1	2 1/4					
28	4	30	7	6	14	36			1	2 1/4					
29	4	29	7	7	14	37			1	2 1/4					
30	4	29	7	8	14	39			1	2 1/4					
31									5	3	0	3	2	10	

	GALLONS.	QUARTS.	PINTS.
Total quantity consumed in the lamp of the Light-.....	5	3	3/4
Total quantity consumed this month for use in the dwelling-house or quarters, and other hand lamps, from oil butts.....			
Total quantity expended in this month.....			

Order of Lens *Sixth* Kind of Light *PR*  
 Number of Wicks in burner *One* Diameter of outer burner *Three*  
 Written by me—  
*John Morgan*  
*Keeper*

*John Morgan*, Light-Keeper.  
 \_\_\_\_\_, Ass't Keeper.



ACCOUNT of Oil, Wicks, and Chimneys expended daily at *Cutneyon Beacon* Light House, in the month of *Decr*, 18*87*, and showing the time of lighting and extinguishing, and the length of time lighted each night.

DAY.	Time of lighting.		Time of extinguishing the light.		Length of time lighted.		Daily quantity of oil consumed in Light-house or Light-vessel lamps.				Number of chimneys broken each night.	Inches of new wick expended.	Quantity of oil taken from butts and set aside for hand and house lamps.	REMARKS ON THE WEATHER. (Dry, damp, rainy, snowy, light wind, moderate breeze, fresh breeze, or gale, &c.)
	Hour.	Min.	Hour.	Min.	Hour.	Min.	Galls.	Qts.	Pints.	Gills.				
1	4	29	7	9	14	41			1	2 1/2				
2	4	29	7	10	14	42			1	2 1/2				
3	4	29	7	11	14	42			1	2 1/2				
4	4	20	7	12	14	45			1	2 1/2				
5														
6														
7														
8														
9														
10														
11														
12														
13														
14														
15														
16														
17														
18														
19														
20														
21														
22														
23														
24														
25														
26														
27														
28														
29														
30														
31														

3 0 2

	GALLONS.	QUARTS.	PINTS.
Total quantity consumed in the lamp of the Light-.....		3	1/2
Total quantity consumed this month for use in the dwelling-house or quarters, and other hand lamps, from oil butts.....			
Total quantity expended in this month.....		3	1/2

{ Order of Lens *Sixth* Kind of Light *GR*  
 { Number of Wicks in burner *two* Diameter of outer burner *1 inch*

Written by me—  
*Joe Corgan*  
*Keeper*

*Joe Corgan*, Light-Keeper.  
 \_\_\_\_\_, Ass't Keeper.



ACCOUNT of Oil, Wicks, and Chimneys expended daily at Antonagon Beacon Light House, in the month of April, 1870, and showing the time of lighting and extinguishing, and the length of time lighted each night.

DAY.	Time of lighting.		Time of extinguishing the light.		Length of time lighted.		Daily quantity of oil consumed in Light-house or Light-vessel lamps.				Number of chimneys broken each night.	Inches of new wick expended.	Quantity of oil taken from butts and set aside for hand and house lamps.	REMARKS ON THE WEATHER. (Dry, damp, rainy, snowy, light wind, moderate breeze, fresh breeze, or gale, &c.)
	Hour.	Min.	Hour.	Min.	Hour.	Min.	Galls.	Qts.	Pints.	Gills.				
1														
2														
3														
4														
5														
6														
7														
8														
9														
10														
11														
12														
13														
14														
15														
16														
17	6	43	5	17	10	33								
18							1	1 1/4				10		
19	6	44	5	16	10	31								
20	6	45	5	15	10	28								
21	6	47	5	13	10	26								
22	6	48	5	11	10	23								
23	6	49	5	9	10	21								
24	6	50	5	8	10	18								
25	6	51	5	7	10	16								
26	6	52	5	5	10	13								
27	6	53	5	4	10	11								
28	6	54	5	2	10	8								
29	6	55	5	1	10	4								
30	6	56	4	59	10	1								
31	6	57	4	59	9	59								
							2	1	1	0 1/4		10		

	GALLONS.	QUARTS.	PINTS.
Total quantity consumed in the lamp of the <u>Beacon House</u> .....	2	1	1 1/8
Total quantity consumed this month for use in the dwelling-house or quarters, and other hand lamps, from oil butts.....			
Total quantity expended in this month.....	2	1	1 1/8

Order of Lens Sixth Kind of Light P R  
 Number of Wicks in burner One Diameter of outer burner 1/2 inch  
 Written by me—  
James Logan  
 Keeper

James Logan, Light-Keeper.  
 \_\_\_\_\_, Ass't Keeper.



ACCOUNT of Oil, Wicks, and Chimneys expended daily at Outrigger Beacon Light House, in the month of May, 1890, and showing the time of lighting and extinguishing, and the length of time lighted each night.

DAY.	Time of lighting.		Time of extinguishing the light.		Length of time lighted.		Daily quantity of oil consumed in Light-house or Light-vessel lamps.				Number of chimneys broken each night.	Inches of new wick expended.	Quantity of oil taken from butts and set aside for hand and house lamps.	REMARKS ON THE WEATHER. (Dry, damp, rainy, snowy, light wind, moderate breeze, fresh breeze, or gale, &c.)
	Hour.	Min.	Hour.	Min.	Hour.	Min.	Galls.	Qts.	Pints.	Gills.				
1	6	0	4	56	9	56			1	3/4		5		
2	7	1	4	53	9	53			1	3/4				
3	7	3	4	52	9	49			1	3/4				
4	7	3	4	51	9	47			1	3/4	1			
5	7	4	4	50	9	45			1	3/4				
6	7	5	4	49	9	44			1	3/4				
7	7	6	4	48	9	42			1	3/4				
8	7	7	4	46	9	40			1	3/4				
9	7	9	4	45	9	38			1	3/4				
10	7	10	4	44	9	35			1	3/4				
11	7	11	4	43	9	33			1	3/4				
12	7	12	4	42	9	31			1	3/4				
13	7	13	4	41	9	29			1	3/4		5		
14	7	14	4	40	9	27			1	3/4				
15	7	15	4	39	9	25			1	3/4				
16	7	16	4	38	9	23			1	3/4	1			
17	7	16	4	37	9	21			1	3/4				
18	7	17	4	36	9	19			1	3/4				
19	7	18	4	35	9	17			1	3/4				
20	7	19	4	34	9	15			1	3/4				
21	7	20	4	33	9	13			1	3/4				
22	7	21	4	32	9	11			1	3/4				
23	7	22	4	31	9	9			1	3/4				
24	7	23	4	31	9	8			1	3/4				
25	7	23	4	30	9	8			1	3/4				
26	7	24	4	30	9	4			1	3/4				
27	7	25	4	29	9	3			1	3/4				
28	7	26	4	28	9	1			1	3/4				
29	7	27	4	28	9	0			1	3/4		5		
30	7	28	4	27	8	58			1	3/4				
31	7	29	4	26	8	57	4	1	1	3/4	2	15		

	GALLONS.	QUARTS.	PINTS.
Total quantity consumed in the lamp of the Light-.....	4	1	1 3/4
Total quantity consumed this month for use in the dwelling-house or quarters, and other hand lamps, from oil butts.....			
Total quantity expended in this month.....	4	1	1 3/4

Order of Lens 6 Kind of Light PR  
 Number of Wicks in burner One Diameter of outer burner 1 inch  
 Written by me— Jas Morgan Keeper  
Jas Morgan, Light-Keeper.  
 \_\_\_\_\_, Ass't Keeper.























GENERAL ACCOUNT of Stores consumed at the Light-Houses at Ontonagon Lake Superior  
 Number of lights and order of apparatus, Two 4 & 5<sup>th</sup> Description of light, P.R. & F.H.

YEAR AND DAY OF THE MONTH.		Tin paint buckets, no.	Putty, in bladders, lbs.	GLASS FOR GLAZING, &c.						SCISSORS.	BROOMS.	FILES.						Handles for files, no.	Foot scales of inches and tenths, no.	Wood rasps, no.	Solder, lbs.	Aprons, no.	Resin, lbs.	Lime, bbls.	Prickers for remov'g charred wick, no.	Tins markers, no.	Cans, 5-galls.	Cans, 3-galls.	Trimming-hooks for removing charred wick, no.	Pens, steel, doz.	Ink, quarts or pints.	Penholders, no.
1907.	Day.			10 inches by 1/8 inches, no.	12 inches by 1/2 inches, no.	inches by inches, no.	inches by inches, no.	inches by inches, no.	inches by inches, no.	Curved, no.	Straight, no.	Hickory or ash, no.	Corn, no.	Flat or bastard, no.	Half-round, no.	Rat-tail, no.	Hand saw, no.	Chickmakers', no.														
Ex in April				3																												
- - May				1																												
- - June																																
Ex in May 1915																																
" June "				4	2									2																		
" July				1										1																		
" Aug																																
" Sep																																
" Oct														1																		
" Nov				2																												
" Dec														1																		
1916																																
" Jan																																
" Feb																																
" March																																
" April																																
" May																																
" June																																

1/6 '16











GENERAL ACCOUNT of Stores received at the Light-Houses at *Ontonagon Lake Superior*  
 Number of lights and order of apparatus, *Two 4<sup>th</sup> + 5<sup>th</sup>* Description of light, *FR + 2. W*

YEAR AND DAY OF THE MONTH.		VOUCHERS.																BLANK BOOKS, &c.															
Year	Day	Keeper's salary, no.	Assistant keeper's salary, no.	Light-vessel keeper's salary, no.	Pay-roll light-vessels, no.	Expenditures, no.	Wreck, no.	Pushing vessels, no.	Journal, no.	Memorandum, no.	Tables, lengths nights, no.	Rules and instructions, placard.	Notice to visitors, placard.	Directions for fog-bells, &c., placard.	Ration tables, placard.	Keeper's duties, placard.	Index to rules, &c, placard.	Postage envelopes, placard.	Purifying rainwater, placard.	Painting and mixing paints, placard.	Dwelling house, &c, in order, placard.	Boats, placard.	Care of oil-burns, placard.	General order, placard.	Extract from laws, &c., placard.	Instructions and directions, 1, 2, and 3, placard.	Wood, cords.	Coal, tons.					
1907	Apr 1 <sup>st</sup>																																
	May 1 <sup>st</sup>					1			1				3													2							
	June 14					1			1				3													2							
	July 14					1			1				3													2							
	Aug 14					1			1				3													2							
	Sep 14					1			1				3													2							
	Oct 14					1			1				3													2							
	Nov 14					1			1				3													2							
	Dec 14					1			1				3													2							
	1910																																
	May 1 <sup>st</sup>					1			1		1		3													2							
	Rec'd 6/24/10										1																						
	Bal 6/30/10					1			1		1		3													2							
	Aug 1 <sup>st</sup>					1			1		1		3													2							
	Sep					1			1		1		3													2							
	Oct					1			1		1		3													2							
	Nov					1			1		1		3													2							
	Dec 1910					1			1		1		3													2							
	Jan					1			1		1		3													2							
	Feb					1			1		1		3													2							
	Mar					1			1		1		3													2							
	April					1			1		1		3													2							
	May					1			1		1		3													2							
	June					1			1		1		3													2							



GENERAL ACCOUNT of Stores consumed at the Light-Houses at Ontonagon Lake Superior  
Number of lights and order of apparatus, Two 4 + 5 Description of light, R R O T W

VOUCHERS.

BLANK BOOKS, &c.

YEAR AND DAY OF THE MONTH.

- Keeper's salary, no.
- Assistant keeper's salary, no.
- Light-vessel keeper's salary, no.
- Pay-roll light-vessels, no.
- Expenditures, no.
- Wreck, no.
- Passing vessels, no.
- Journal, no.
- Memorandum, no.
- Tables, lengths lights, no.
- Rules and instructions, placard.
- Notice to visitors, placard.
- Directions for fog-bells, &c., placard.
- Ration tables, placard.
- Keeper's duties, placard.
- Index to rules, &c., placard.
- Postage envelopes, placard.
- Purifying rainwater, placard.
- Painting and mixing paints, placard.
- Dwelling cover, &c., in order, placard.
- Boats, placard.
- Care of oil-lights, placard.
- General order, placard.
- Extract from laws, &c., placard.
- Instructions and directions, 1, 2, and 3, placard.
- Wood, cords.
- Coal, tons.

1907

Day.

Ex in April

None

May

None

June

"

July

"

Aug

"

Sep

"

Oct

"

Nov

"

Dec

"

Jan

"

Feb

"

Mar

"

April

"

May

"

June

"

1915

"

"

"

"

"

"

"

"

"

"

"

"

"



GENERAL ACCOUNT of Illuminating Apparatus, Fixtures, and all other Public Property (except supplies) received at the Light-Houses at *Antonagon*

Number of lights and order of apparatus, *Two 4<sup>th</sup> + 5<sup>th</sup>* Description of light, *P R + P N.*

YEAR AND DAY OF THE MONTH.		Sheet-iron chimney and damper.	Lantern holder, iron.	Pedestal for apparatus.	Revolving machinery.	Service table.	Lightning conductor.	Storm pans.	Lamps, <i>4<sup>th</sup> + 5<sup>th</sup></i> order.	Rod lamps.	Laceries or lighting lamps.	Alarm bells.	Lamp heaters, metallic.	Spare burners.	Service box.	Lamp stands.	Measure, 250 grains.	Measure $\frac{1}{2}$ meter (double).	Plummet and line.	Large spirit level.	Small spirit level.	Circular level.	Dripping pans.	Trimming trays.	Wick measure.	Wick mandrels.	Curved scissors.	Straight scissors.	Lamp feeders.	Hand lamps or lanterns.	Valve mold and tools.	Jack-screws, 3 in set.	Chimney lifters.	Screw drivers.	Screw wrenches.	Crank keys.	
<i>1907.</i>	Day.																																				
	<i>Bal April 1<sup>st</sup></i>																																				
	<i>a May 1<sup>st</sup></i>																																				
	<i>Bal May 1<sup>st</sup> 1905</i>		1	2		1	1	6	6						1						1	1							1					1	1		
	<i>Recvd June 24/05</i>																																				
	<i>Bal 6/30/05</i>		1	2		1	1	6	6						1																						
	<i>" Aug 1</i>		1	2		1	1	6	6						1						1	1						1						1	1		
	<i>" Sep 1</i>		1	2		1	1	6	6						1						1	1						1						1	1		
	<i>" Oct 1</i>		1	2		1	1	6	6						1						1	1						1						1	1		
	<i>" Nov 1</i>		1	2		1	1	6	6						1						1	1						1						1	1		
	<i>" Dec 1</i>		1	2		1	1	6	6						1						1	1						1						1	1		
	<i>" Jan</i>		1	2		1	1	6	6						1						1	1						1						1	2		
	<i>" Feb</i>		1	2		1	1	6	6						1						1	1						1						1	2		
	<i>" Mar</i>		1	2		1	1	6	6						1						1	1						1						1	2		
	<i>" April</i>		1	2		1	1	6	6						1						1	1						1						1	2		
	<i>" May</i>		1	2		1	1	6	6						1						1	1						1						1	2		
	<i>" June</i>		1	2		1	1	6	6						1						1	1						1						1	2		



GENERAL ACCOUNT of Illuminating Apparatus, Fixtures, and all other Public Property (except supplies) consumed at the Light-houses at Antigonish

Number of lights and order of apparatus, Two 4" & 5"

Description of light, F. R. & F. H.

YEAR AND DAY OF THE MONTH.		Sheet-iron chimney and damper.	Lantern ladder, iron.	Pedestal for apparatus.	Revolving machinery.	Service table.	Lightning conductor.	Storm pipes.	Lamps, order.	Rod lamps.	Lacertus or lighting lamps.	Alarm bells.	Lamp heaters, metallic.	Spare burners.	Service box.	Lamp stands.	Measures, 350 grams.	Measure 1/2 meter (double).	Plumbot and line.	Large spirit level.	Small spirit level.	Circular level.	Dripping pans.	Trimming trays.	Wick measures.	Wick mandrels.	Curved scissors.	Straight scissors.	Lamp feeders.	Hand lamps or lanterns.	Valve mold and tools.	Jack-screws, 2 in set.	Chimney lifters.	Screw drivers.	Screw wrenches.	Crank keys.
1907	Ex in April	None																																		
	" - May	None																																		
	- - June																																			
	Ex in May 1915	"																																		
	" June	"																																		
	" July	"																																		
	" Aug	"																																		
	" Sep	"																																		
	" Oct	"																																		
	" Nov	"																																		
	" Dec	"																																		
	" Jan 1916	"																																		
	" Feb	"																																		
	" Mar	"																																		
	" April	"																																		
	" May	"																																		
	" June	"																																		







GENERAL ACCOUNT of Illuminating Apparatus, Fixtures, and all other Public Property (except supplies) consumed at the Light-House at Antigonon

Number of lights and order of apparatus, *Two 4<sup>th</sup> + 5<sup>th</sup>*

Description of light, *PR + 7N*

YEAR AND DAY OF THE MONTH.

1907

Day.

- Lamp scrapers (triangular).
- Tinder box, flint and steel.
- Glaziers' diamond.
- Glaziers' knives.
- Glaziers' pinners.
- Two-foot rules.
- Double slates.
- Single slates.
- Measuring line.
- Hammers.
- Hatchets.
- Ship scrapers.
- Soldering irons.
- Soldering furnace.
- Light-house clock.
- Lantern curtains.
- Apparatus covers.
- Lamp covers.
- Keepers' aprons.
- Feather brushes.
- Dusting brushes.
- Dust pans.
- Sweeping brushes.
- Wolf-head brushes.
- White mops.
- Spare fly or governor.
- Spare dampers.
- Rouge box.
- Whiting box.
- Valve box.
- White lead, dry, box.
- Red lead, dry, box.
- Sand box.
- Wick box.
- Spirits wine can.

*Ex in April*  
*" - May*  
*" - June*

*None*

*None*

*Exp in May 1911*  
*" " June "*  
*" " July "*  
*" " Aug "*  
*" " Sep "*  
*" " Oct "*  
*" " Nov "*  
*" " Dec "*  
*" " Jan 1912 "*  
*" " Feb "*  
*" " Mar "*  
*" " April "*  
*" " May "*  
*" " June "*

<i>Exp in May 1911</i>	<i>"</i>	<i>"</i>
<i>" " June "</i>	<i>"</i>	<i>"</i>
<i>" " July "</i>	<i>"</i>	<i>"</i>
<i>" " Aug "</i>	<i>"</i>	<i>"</i>
<i>" " Sep "</i>	<i>"</i>	<i>"</i>
<i>" " Oct "</i>	<i>"</i>	<i>"</i>
<i>" " Nov "</i>	<i>"</i>	<i>"</i>
<i>" " Dec "</i>	<i>"</i>	<i>"</i>
<i>" " Jan 1912 "</i>	<i>"</i>	<i>"</i>
<i>" " Feb "</i>	<i>"</i>	<i>"</i>
<i>" " Mar "</i>	<i>"</i>	<i>"</i>
<i>" " April "</i>	<i>"</i>	<i>"</i>
<i>" " May "</i>	<i>"</i>	<i>"</i>
<i>" " June "</i>	<i>"</i>	<i>"</i>







GENERAL ACCOUNT of Illuminating Apparatus, Fixtures, and all other Public Property (except supplies) consumed at the Light Houses at Antigonish

Number of lights and order of apparatus, *Nos 4 & 5* Description of light, *G R + F W*

YEAR AND DAY OF THE MONTH.	Day.	Spirits turpentine can.	Boiled oil can.	Lamp-black box.	Flat pans with lips.	Oil-butts, 100-gallon.	Oil-butts, 50-gallon.	Oil-butts, 5-gallon.	Dripping buckets.	Oil-carriers, copper.	Oil-carriers, tin.	Oil-strainers.	Copper pumps.	Oil-syphon, tin.	Copper funnels.	Tin funnels.	Liquid measure (set 5 pieces.)	Gauge rods for oil butts.	Gauge rod, 3/4-meter, for oil elatern.	Junk swabs.	Paint buckets, tin.	Pairs pliers for large lights.	Pairs pliers for small lights.	Pairs flat pliers.	Pairs nippers.	Hand vice.	French vise.	Drill and bits.	Pairs forceps.	Hand saws.	Tenon saws.	Glimlets, assorted.	Augers, assorted sizes.	Yards metallic cord.	Collars.	Punches, different sizes.
<i>Ex April</i>		<i>None</i>																																		
<i>May</i>		<i>None</i>																																		
<i>June</i>		<i>None</i>																																		
<i>Exp in May 1910</i>		<i>"</i>																																		
<i>" June "</i>		<i>"</i>																																		
<i>" July "</i>		<i>"</i>																																		
<i>" Aug</i>		<i>"</i>																																		
<i>" Sep</i>		<i>"</i>																																		
<i>" Oct</i>		<i>"</i>																																		
<i>" Nov</i>		<i>"</i>																																		
<i>" Dec</i>		<i>"</i>																																		
<i>" Jan 1911</i>		<i>"</i>																																		
<i>" Feb</i>		<i>"</i>																																		
<i>" Mar</i>		<i>"</i>																																		
<i>" April</i>		<i>"</i>																																		
<i>" May</i>		<i>"</i>																																		
<i>" June</i>		<i>"</i>																																		







GENERAL ACCOUNT of Illuminating Apparatus, Fixtures, and all other Public Property (except supplies) consumed at the Light House at *Autouagon*

Number of lights and order of apparatus, *Nos 4 & 5*

Description of light, *FR & FN*

YEAR AND DAY OF THE MONTH.

1907. Day.

- Wood chisels, different sizes.
- Cold-chisels.
- Jack planes.
- Smoothing planes.
- National flag.
- Flag halliards and blocks.
- Flagstaff.
- Wood axes.
- Wood-horse and saw.
- Oil-stone for sharpening tools.
- Spades, for keeping grounds in order.
- Shovels, for keeping grounds in order.
- Medicine chest.
- Grocer's scales and set of weights.
- Beam scale or steelyard.
- German files.
- Handles for files.
- Cooking stove and fixtures.
- Lantern or watch-room stove and fixtures.
- Wooden ladder for whitewashing tower and buildings.
- Set blocks and tackle falls for hoisting and lowering staging around tower in painting or whitewashing.
- Row boat, with equipments complete.
- Sail boat, with equipments complete.
- Fog bell by hand.
- Fog bell by machinery.
- Fog whistle, steam.
- Tool chest.
- Spare damper keys.
- Bed-room bell from lantern.
- Fine table in watch-room.

*Ex in April*

*None*

*" May*

*None*

*" June*

*Ex in May 1915*

*" June*

*" July*

*" Aug*

*" Sep*

*" Oct*

*" Nov*

*" Dec*

*" Jan*

*" Feb*

*" Mar*

*" April*

*" May*

*" June*

<i>Ex in May 1915</i>	<i>None</i>
<i>" June</i>	<i>"</i>
<i>" July</i>	<i>"</i>
<i>" Aug</i>	<i>"</i>
<i>" Sep</i>	<i>"</i>
<i>" Oct</i>	<i>"</i>
<i>" Nov</i>	<i>"</i>
<i>" Dec</i>	<i>"</i>
<i>" Jan</i>	<i>"</i>
<i>" Feb</i>	<i>"</i>
<i>" Mar</i>	<i>"</i>
<i>" April</i>	<i>"</i>
<i>" May</i>	<i>"</i>
<i>" June</i>	<i>"</i>



GEN

GENERAL ACCOUNT of Illuminating Apparatus, Fixtures, and all other Public Property (except supplies) received at the Light House at *Autunagon*

Number of lights and order of apparatus, *Two 4 + 5"*

Description of light, *FR & FN*

YE

YEAR AND DAY OF THE MONTH.

18 . . . Day.

Bal

Bal

Bal May 1905

Recd

"

"

"

"

"

Ja

"

"

"

"

"

"



GENERAL ACCOUNT of Illuminating Apparatus, Fixtures, and all other Public Property (except supplies) consumed at the Light-Houses at *Cantonagon*

Number of lights and order of apparatus, *Nos 4 + 5*

Description of light, *Z. B. & F. W.*

YEAR AND DAY OF THE MONTH.

18 . . . Day.

*6<sup>th</sup> in May 1915*



