

UNITED STATES LIGHT-HOUSE ESTABLISHMENT.

DAILY EXPENDITURE

OF

OILS, WICKS, AND CHIMNEYS

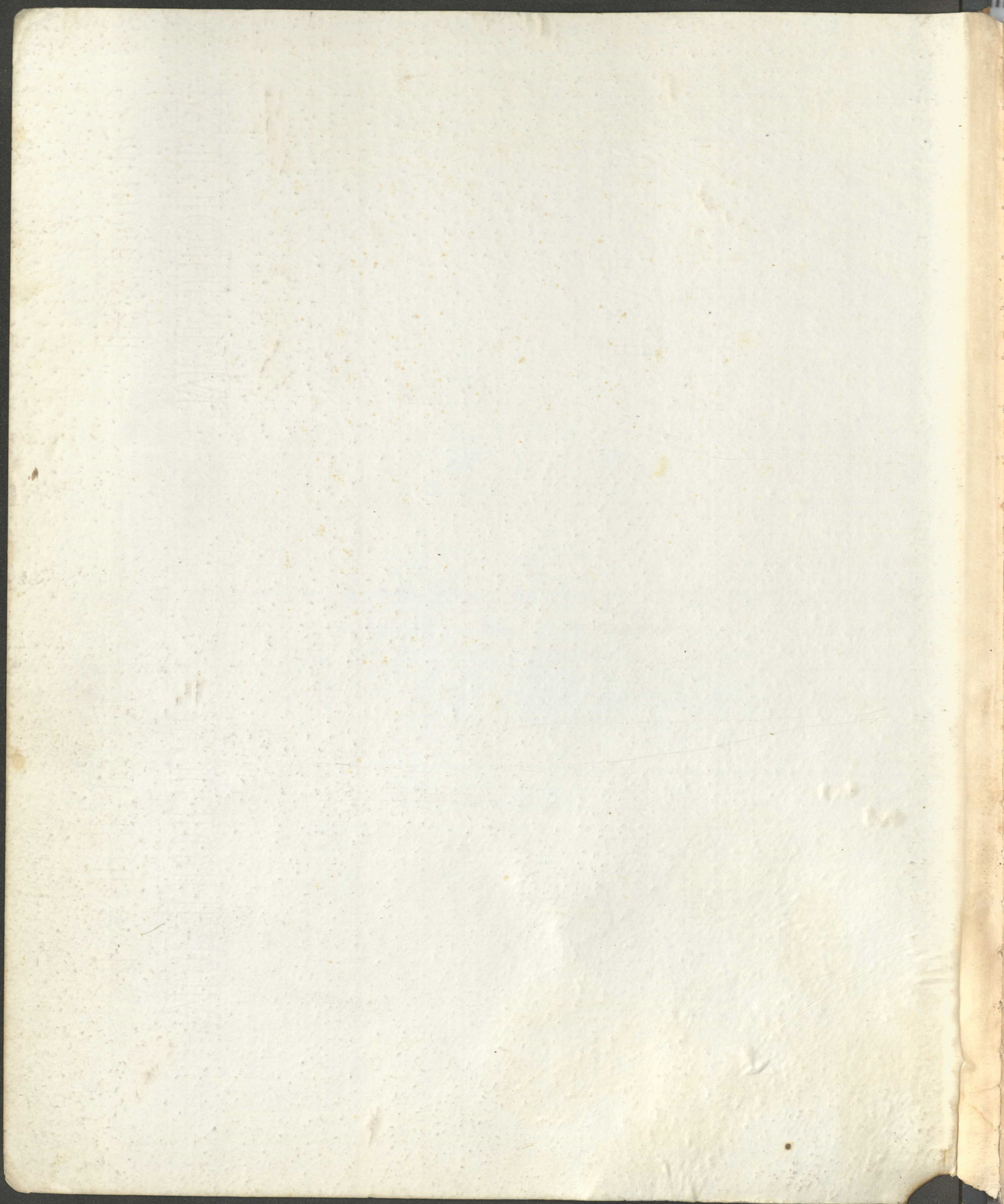
At the *Ontonagon*

Light Station *Lake Superior*

(PL 2-18-65-1,500)

*From June 4 1861 to*







ACCOUNT of Oil, Wicks, and Chimneys expended daily at the *Autonagon* Light-Houses, in the month of *June*, 189 *1901*  
 and showing the time of lighting and extinguishing, and the length of time lighted each night.

DAY.	Time of lighting.		Time of extinguishing the light.		Length of time lighted.		Daily quantity of oil consumed in Light-house or Light-vessel lamps.				Number of chimneys broken each night.	Inches of new wick expended.	Quantity of oil set aside for hand and house lamps.	REMARKS ON THE WEATHER. (Dry, damp, rainy, snowy, light wind, moderate breeze, fresh breeze, or gale, &c.)	
	Hour.	Min.	Hour.	Min.	Hour.	Min.	Galls.	Qts.	Pints.	Gills.					
1	7	29	4	26	8	55	2			3			<i>G. &amp; P. G.</i> <i>1.0.0.0</i>	Rain light breeze N.W. + N.E.	
2	7	30	4	25	8	55	2			3				Damp " " N.E.	
3	7	29	4	25	8	54	2			3			<i>N</i>	Dry " " " var"	
4	7	32	4	24	8	52	2			3				Rain very fresh breeze S.W.	
5	7	32	4	24	8	52	2			3				" " " " breeze var"	
6	7	33	4	24	8	57	2			3				" " " " " H"	
7	7	33	4	24	8	50	2			3				Damp steady " "	
8	7	34	4	23	8	49	2			2 3/4	1			" Calm	
9	7	35	4	23	8	48	2			3			<i>1.0.0.0</i>	Dry light breeze var"	
10	7	35	4	23	8	48	2			2 3/4				Damp Calm	
11	7	36	4	23	8	47	2			3				Rain light breeze N.E.	
12	7	36	4	23	8	45	2			3				" with severe squall S.W.	
13	7	36	4	23	8	45	2			3				Damp light breeze N.E.	
14	7	37	4	23	8	45	2			2 3/4				Rain fresh " var"	
15	7	38	4	23	8	44	2			3				Dry Calm	
16	7	38	4	23	8	44	2			3				" fresh breeze S.W.	
17	7	38	4	23	8	44	2			3			<i>N</i>	Rain fresh " " "	
18	7	39	4	23	8	43	2			3				" " " var"	
19	7	39	4	23	8	43	2			3			<i>1.0.0.0</i>	Dry light " " "	
20	7	40	4	23	8	43	2			2 3/4				Rain " " var"	
21	7	40	4	23	8	43	2			3				" Calm	
22	7	40	4	23	8	43	2			3				" light breeze var"	
23	7	40	4	24	8	43	2			3				Damp " " " "	
24	7	40	4	24	8	43	2			3				Rainy Squally variable	
25	7	40	4	24	8	43	2			3				" " " " "	
26	7	40	4	24	8	43	2			3				" very " " "	
27	7	40	4	25	8	44	2			3				" light breeze -	
28	7	40	4	26	8	45	2			2 3/4				" Squally variable	
29	7	40	4	26	8	45	2			3			<i>0.1.1.0</i>	" fresh breeze S.W.	
30	7	40	4	26	8	46	2			3				" light breeze N.E.	
31															

17 3 0 0 3/4 2 30 3.1.1.0

	GALLONS.	QUARTS.	PINTS.
Total quantity consumed in the lamp of the Light-Houses	17	3	0 3/4
Total quantity consumed this month for use in the dwelling-house or quarters, and other hand lamps	3	1	1
Total quantity expended this month	21	0	1 3/4

Order of Lens *4" \** Kind of Light *P.R. & W.*  
 Number of Wicks in burner *one* Diameter of outer burner *1/2" & 1/2"*  
 Written by me—  
*[Signature]*

*[Signature]*, Light-Keeper.  
 \_\_\_\_\_, Ass't Keeper.



ACCOUNT of Oil, Wicks, and Chimneys expended daily *at Outonagon* Light-Houses, in the month of *July 1901* 189  
 and showing the time of lighting and extinguishing, and the length of time lighted each night.

DAY.	Time of lighting.		Time of extinguishing the light.		Length of time lighted.		Daily quantity of oil consumed in Light-house or Light-vessel lamps.				Number of chimneys broken each night.	Inches of new wick expended.	Quantity of oil set aside for hand and house lamps.	REMARKS ON THE WEATHER. (Dry, damp, rainy, snowy, light wind, moderate breeze, fresh breeze, or gale, &c.)
	Hour.	Min.	Hour.	Min.	Hour.	Min.	Galls.	Qts.	Pints.	Gills.				
1	7	40	4	27	8	46	2		0			15		Rain light wind S.W
2	7	40	4	27	8	46	2		3/4					" " " Var
3	7	40	4	28	8	47	2		3					" Squally " "
4	7	40	4	28	8	48	2		2 1/2					Damp light wind N.E
5	7	39	4	29	8	50	2		3					Rain + fog wind fresh N.W
6	7	39	4	30	8	50	2		3					" " " light W
7	7	39	4	30	8	57	2		2 1/2					Damp light breeze "
8	7	38	4	31	8	52	2		3					Rain " " Var
9	7	38	4	32	8	53	2		3					Damp " " "
10	7	38	4	33	8	54	2		3					Rain " " "
11	7	37	4	33	8	56	2		1					Dry " " "
12	7	37	4	34	8	56	2		1					" " " "
13	7	36	4	35	8	58	2		1			15		" fresh " S.W
14	7	35	4	36	8	59	2		1					" Calm "
15	7	37	4	37	9	1	2		1	1/4				" " "
16	7	37	4	37	9	3	2		1	1/4				Rain light breeze Var
17	7	33	4	38	9	5	2		1	1/4				Dry Calm "
18	7	33	4	39	9	6	2		1	1/4				" light breeze N.E
19	7	32	4	40	9	8	2		1	1/4				" " " Var
20	7	31	4	41	9	9	2		1	1/4				Rain " " "
21	7	31	4	41	9	11	2		1	1/4				Dry Calm "
22	7	30	4	42	9	12	2		1	1/4				Rain " " "
23	7	29	4	43	9	14	2		1	1/4				" " " "
24	7	28	4	44	9	16	2		1	3/4				" " " "
25	7	27	4	45	9	18	2		1	3/4		15		" fresh wind N.E
26	7	25	4	47	9	22	2		1	3/4				" steady breeze "
27	7	25	4	47	9	22	2		1	3/4				" fog Calm "
28	7	24	4	48	9	24	2		1	3/4				" " " "
29	7	23	4	49	9	26	2		1	3/4				Damp fog Calm "
30	7	22	4	50	9	28	2		1	1				Dry Light breeze Var
31	7	21	4	57	9	30	2		1	1				" " " "

19 1 0 2 3/4 30 3 2 1 1/4

	GALLONS.	QUARTS.	PINTS.
Total quantity consumed in the lamp of the Light-Houses	19	1	11/16
Total quantity consumed this month for use in the dwelling-house or quarters, and other hand lamps	3	2	15/16
Total quantity expended this month	22	0	0

Order of Lens *4 + 5<sup>th</sup>* Kind of Light *P.R. + 9 W*  
 Number of Wicks in burner *one* Diameter of outer burner *1 1/2 + 1 1/8*

Written by me—  
*Paul Morgan*  
*Keeper*

*Paul Morgan* Light-Keeper.  
 \_\_\_\_\_, Ass't Keeper.



ACCOUNT of Oil, Wicks, and Chimneys expended daily at *Antigonish*

Light-Houses, in the month of *August*, 189*1*

and showing the time of lighting and extinguishing, and the length of time lighted each night.

DAY.	Time of lighting.		Time of extinguishing the light.		Length of time lighted.		Daily quantity of oil consumed in Light-house or Light-vessel lamps.				Number of chimneys broken each night.	Inches of new wick expended.	Quantity of oil set aside for hand and house lamps.	REMARKS ON THE WEATHER. (Dry, damp, rainy, snowy, light wind, moderate breeze, fresh breeze, or gale, &c.)
	Hour.	Min.	Hour.	Min.	Hour.	Min.	Galls.	Qts.	Pints.	Gills.				
1	7	20	4	52	9	32	2	1	1				Dry light breeze var	
2	7	19	4	53	9	35	2	1	1				" Steady " W	
3	7	18	4	54	9	37	2	1	1 1/2				" " " "	
4	7	17	4	55	9	39	2	1	1 1/2				" Calm	
5	7	16	4	56	9	41	2	1	1 1/2				" light " var	
6	7	14	4	57	9	43	2	1	1 1/2				" " " S.W	
7	7	12	4	58	9	46	2	1	1 1/2				" " " W	
8	7	11	4	59	9	48	2	1	1 1/4				" " " var	
9	7	10	5	0	9	50	2	1	1		15		Rain fresh wind S + W	
10	7	8	5	2	9	53	2	1	1 1/4				damp light breeze W	
11	7	7	5	3	9	55	2	1	1 1/2				Rain calm	
12	7	6	5	4	9	57	2	1	1 1/4				" "	
13	7	5	5	6	10	0	2	1	1				Dry "	
14	7	3	5	6	10	2	2	1	1 1/4				Rain light breeze var	
15	7	2	5	7	10	5	2	1	1 1/4				Dry " " W	
16	7	0	5	8	10	8	2	1	1 1/2				" Calm	
17	6	59	5	9	10	10	2	1	1 1/2				" light breeze variable	
18	6	57	5	10	10	13	2	1	1 1/2				" Calm	
19	6	56	5	11	10	15	2	1	1 1/2				" Steady breeze N.E	
20	6	55	5	12	10	18	2	1	1 1/2				" light - S.E + N.E	
21	6	54	5	13	10	20	2	1	1				" " " N.E. + S.E	
22	6	57	5	14	10	23	2	1	1				Rain " " var	
23	6	49	5	15	10	26	2	1	1 1/2		15		" " " "	
24	6	47	5	16	10	29	2	1	1 1/2				" " " "	
25	6	46	5	18	10	32	2	1	1 1/2				Fog " " N + E	
26	6	45	5	19	10	34	2	1	1 1/2				Rain " " var	
27	6	43	5	20	10	36	2	1	1 1/2				Dry " " N.E	
28	6	41	5	21	10	39	2	1	1 3/4				Damp " " var	
29	6	40	5	22	10	42	2	1	2				Rain fresh wind N.E + W	
30	6	38	5	23	10	44	2	1	2				damp light " var	
31	6	36	5	24	10	47	2	1	2				" " " S.W	

20 2 1 3/4 30 3.2.0.1

	GALLONS.	QUARTS.	PINTS.
Total quantity consumed in the lamp of the Light-Houses	20	2	1 13/16
Total quantity consumed this month for use in the dwelling-house or quarters, and other hand lamps	3	2	1/4
Total quantity expended this month	24	1	0 1/16

Order of Lens *4 + 5<sup>th</sup>* Kind of Light *9 R + 9 W*  
 Number of Wicks in burner *6* Diameter of outer burner *1 1/2 + 1 1/8*  
 Written by me— *J. S. Logan*  
*Keeper*

*J. S. Logan*, Light-Keeper.  
 \_\_\_\_\_, Ass't Keeper.



ACCOUNT of Oil, Wicks, and Chimneys expended daily at Cutwagon

Light-Houses, in the month of Sept 1906 189

and showing the time of lighting and extinguishing, and the length of time lighted each night.

DAY.	Time of lighting.		Time of extinguishing the light.		Length of time lighted.		Daily quantity of oil consumed in Light-house or Light-vessel lamps.				Number of chimneys broken each night.	Inches of new wick expended.	Quantity of oil set aside for hand and house lamps.	REMARKS ON THE WEATHER. (Dry, damp, rainy, snowy, light wind, moderate breeze, fresh breeze, or gale, &c.)
	Hour.	Min.	Hour.	Min.	Hour.	Min.	Galls.	Qts.	Pints.	Gills.				
1	6	35	5	25	10	44	2	1	2					Dry Calm
2	6	33	5	26	10	53	2	1	2 1/4					light breeze var
3	6	31	5	27	10	55	2	1	2 1/4					Calin
4	6	30	5	28	10	57	2	1	2 1/4					light breeze var
5	6	28	5	29	10	59	2	1	2 1/4					" " S.W
6	6	26	5	30	11	01	2	1	2 1/4					Rain var
7	6	25	5	31	11	04	2	1	2 1/4					Dry fresh wind N.E
8	6	23	5	32	11	07	2	1	2 1/4					" Steady breeze N.E & N
9	6	21	5	33	11	12	2	1	2 1/4					Damp light var
10	6	19	5	34	11	15	2	1	2 1/4					" " " "
11	6	18	5	35	11	18	2	1	2 1/4					Dry hazy calm
12	6	16	5	36	11	21	2	1	2 1/4					" Smoky "
13	6	14	5	37	11	23	2	1	3					" " " "
14	6	12	5	39	11	26	2	1	3					Damp light wind var
15	6	10	5	40	11	29	2	1	3					Rain fresh - W
16	5	9	5	41	11	32	2	1	3					" 1/2 gale N.W & N
17	6	7	5	42	11	34	2	1	3 1/4					" fresh wind N & N x E
18	6	5	5	43	11	38	2	1	3 1/4					Damp dry - W
19	6	4	5	44	11	41	2	1	3 1/4					" light " S.W
20	6	2	5	45	11	44	2	1	3 1/4					" " var
21	6	0	5	46	11	46	2	1	3 1/4					Dry fresh wind S.W
22	5	58	5	47	11	49	2	1	3 1/4					" Calm
23	5	57	5	48	11	52	2	1	3 1/4					" fresh wind S.W
24	5	55	5	49	11	55	2	1	3 1/4					Damp dry - - -
25	5	53	5	50	11	57	2	1	3 1/4					" 1/2 gale - - -
26	5	51	5	51	12	0	2	1	3 1/4					" light breeze var
27	5	50	5	52	12	3	3	0	0					Rain fresh wind N.E
28	5	48	5	54	12	6	3	0	0					" " " "
29	5	46	5	55	12	8	3	0	0					Damp light - N.W x W
30	5	44	5	56	12	12	3	0	0					" " var
31														

21 20 0 1/4 30 33 10

	GALLONS.	QUARTS.	PINTS.
Total quantity consumed in the lamp of the Light-Houses	21	2	0
Total quantity consumed this month for use in the dwelling-house or quarters, and other hand lamps	3	3	1
Total quantity expended this month	25	1	1

Order of Lens 4 + 5 Kind of Light FR + FW  
 Number of Wicks in burner one Diameter of outer burner 1 1/2 + 1 1/8  
 Written by me—  
Jas Corigan  
 Keeper

Jas Corigan Light-Keeper.  
 Ass't Keeper.



ACCOUNT of Oil, Wicks, and Chimneys expended daily at *Autonagon* Light-Houses, in the month of *October*, 189 *1901*  
 and showing the time of lighting and extinguishing, and the length of time lighted each night.

DAY.	Time of lighting.		Time of extinguishing the light.		Length of time lighted.		Daily quantity of oil consumed in Light-house or Light-vessel lamps.				Number of chimneys broken each night.	Inches of new wick expended.	Quantity of oil set aside for hand and house lamps.	REMARKS ON THE WEATHER. (Dry, damp, rainy, snowy, light wind, moderate breeze, fresh breeze, or gale, &c.)
	Hour.	Min.	Hour.	Min.	Hour.	Min.	Galls.	Qts.	Pints.	Gills.				
1	5	42	5	57	12	15	3	0	0	1/4				Rain fresh wind N.E. to W
2	5	41	5	58	12	18	3	0	0	1/4				" " " " N.W. x N
3	5	39	5	59	12	20	3	0	0	1/4				" " " " N.W.
4	5	37	6	0	12	23	3	0	0	1/2	15			Damp " " " " var
5	5	35	6	3	12	26	3	0	0	1/2				" " " " N.W. x N.E.
6	5	33	6	4	12	29	3	0	0	1/2				" " light " " var
7	5	32	6	5	12	31	3	0	0	3/4				" " " " "
8	5	30	6	6	12	34	3	0	0	3/4				Rain " " " " S.W. to S.E.
9	5	29	6	7	14	38	3	0	0	3/4				" fresh " " " var
10	5	27	6	8	14	40	3	0	0	1/2				" " " " " N.W. to N
11	5	25	6	9	14	43	3	0	0	1/2				Damp light " " " N
12	5	24	6	10	14	45	3	0	0	1/2				Dry fresh light breeze N.E. x N
13	5	22	6	12	14	48	3	0	0	1/4				Rain fresh wind N.W. x N
14	5	20	6	13	14	51	3	0	0	1/4				Dry " breeze S.W. x S
15	5	19	6	14	14	54	3	0	0	1/4				Rain " gale N.W. x W
16	5	17	6	15	12	57	3	0	0	1/2				Damp fresh breeze var
17	5	16	6	16	13	0	3	0	0	1/2				" steady " " N
18	5	14	6	17	13	2	3	0	0	1/2				Dry " " " " S.W.
19	5	13	6	18	13	5	3	0	0	1/2				" fresh " " " N
20	5	11	6	19	13	7	3	0	0	1/4	15			" light " " " var
21	5	9	6	20	13	11	3	0	0	1/4				" " " " " "
22	5	8	6	21	13	15	3	0	0	1/4				" " " " " "
23	5	7	6	22	13	16	3	0	0	2/4				" " " " " "
24	5	6	6	23	13	18	3	0	0	2/4				" " " " " N
25	5	4	6	25	13	21	3	0	0	2/4				" " " " " N
26	5	2	6	26	13	24	3	0	0	2/4				" " " " " N x E
27	5	1	6	27	13	26	3	0	0	2/4				" " " " " N
28	5	0	6	28	13	29	3	0	0	1/4				" Hurry " " " "
29	4	58	6	30	13	31	3	0	0	1/4				" " " " " "
30	4	57	6	31	13	34	3	0	0	2/4				" " fresh " " var
31	4	55	6	32	13	37	3	0	0	2/4				" " " " " " "

24 20 2/4 30 4 0 0 0

	GALLONS.	QUARTS.	PINTS.
Total quantity consumed in the lamp of the Light-Houses	24	2	5/16
Total quantity consumed this month for use in the dwelling-house or quarters, and other hand lamps	4	0	0
Total quantity expended this month	28	2	5/16

Order of Lens *4 1/2* Kind of Light *2 R + 1 W*  
 Number of Wicks in burner *One* Diameter of outer burner *1/2 + 1/8*  
 Written by me— *Jos. Cosgan*  
*Keeper*

*Jos. Cosgan* Light-Keeper.  
 Ass't Keeper.



ACCOUNT of Oil, Wicks, and Chimneys expended daily at Astoria

Light-Houses, in the month of Nov 1901, 189

and showing the time of lighting and extinguishing, and the length of time lighted each night.

DAY.	Time of lighting.		Time of extinguishing the light.		Length of time lighted.		Daily quantity of oil consumed in Light-house or Light-vessel lamps.				Number of chimneys broken each night.	Inches of new wick expended.	Quantity of oil set aside for hand and house lamps.	REMARKS ON THE WEATHER. (Dry, damp, rainy, snowy, light wind, moderate breeze, fresh breeze, or gale, &c.)
	Hour.	Min.	Hour.	Min.	Hour.	Min.	Galls.	Qts.	Pints.	Gills.				
1	4	54	6	33	13	39	3			2 1/2				Dry fresh wind W
2	4	53	6	34	13	41	3			2 3/4				" " S
3	4	51	6	36	13	45	3	0		2 3/4		15		Snow - " N.W
4	4	50	6	37	13	47	3	0		2 3/4				Damp very - " "
5	4	49	6	38	13	49	3	0		3				" light - S W & W
6	4	48	6	39	13	51	3	0		3				Snow " " var"
7	4	47	6	41	13	54	3	0		3				" + Rain fresh - W
8	4	46	6	42	13	57	3	0		3 1/2				" + gale N.W
9	4	45	6	43	13	59	3	0		3 1/2				Damp fresh wind var
10	4	44	6	44	14	1	3	0		3 1/2				" very - S
11	4	43	6	45	14	4	3	0		3 1/2				Rain " " var"
12	4	42	6	47	14	6	3	0		3 1/2				Damp " " N.W
13	4	41	6	48	14	8	3	0		3 1/2				" " " W x N
14	4	40	6	49	14	10	3	0		3 3/4				" " " N.W & N x W
15	4	39	6	50	14	12	3	0		3 3/4				Snow " " N x E & N.E
16	4	38	6	52	14	14	3	0		3 3/4				" " " " " "
17	4	37	6	53	14	16	3	1		4		15		" " " " " "
18	4	36	6	55	14	18	3	1		4				" " " " " "
19	4	35	6	56	14	21	3	1		4				" " " " " "
20	4	34	6	57	14	23	3	1		4				" " " " " "
21	4	34	6	58	14	24	3	1		4				" " " " " "
22	4	33	7	0	14	26	3	1		4				Snow light breeze var
23	4	32	7	1	14	28	3	1		4				" fresh wind N & N.E
24	4	31	7	3	14	30	3	1		4 1/2				Damp light " N & S.W
25	4	31	7	4	14	32	3	1		4 1/2				" fresh breeze N
26	4	31	7	5	14	33	3	1		4 1/2				" light " var"
27	4	31	7	5	14	35	3	1		4 1/2				" " " " "
28	4	30	7	6	14	36	3	1		4 1/2				Snow " " " "
29	4	30	7	7	14	37	3	1		4 1/2				Damp " " " S
30	4	29	7	8	14	39	3	1		4 1/2				" " " " S.W
31														Rain " " " S.

25 3 1 1 3/4 30 4 1 0 0

	GALLONS.	QUARTS.	PINTS.
Total quantity consumed in the lamp of the Light-Houses	25	3	1 7/16
Total quantity consumed this month for use in the dwelling-house or quarters, and other hand lamps	4	1	0
Total quantity expended this month	29	3	1 7/16

Order of Lens 4<sup>th</sup> & 5<sup>th</sup> Kind of Light P.R. + F.W.  
 Number of Wicks in burner 4 Diameter of outer burner 1/2 + 1/8

Written by me—

*W. Morgan*  
 Keeper

*W. Morgan*, Light-Keeper.  
 Ass't Keeper.



ACCOUNT of Oil, Wicks, and Chimneys expended daily *Aulonagon* Light-Houses, in the month of *Decr*, 189 *1901*  
 and showing the time of lighting and extinguishing, and the length of time lighted each night.

DAY.	Time of lighting.		Time of extinguishing the light.		Length of time lighted.		Daily quantity of oil consumed in Light-house or Light-vessel lamps.				Number of chimneys broken each night.	Inches of new wick expended.	Quantity of oil set aside for hand and house lamps.	REMARKS ON THE WEATHER. (Dry, damp, rainy, snowy, light wind, moderate breeze, fresh breeze, or gale, &c.)
	Hour.	Min.	Hour.	Min.	Hour.	Min.	Galls.	Qts.	Pints.	Gills.				
1	4	29	7	9	14	41	3	1	1 1/2		15		Rain Snow fresh wind N E x N	
2	4	29	7	10	14	42	3	1	1 1/2				" " " " W	
3	4	29	7	11	14	42	3	1	1 1/2				Snow " " " var"	
4	4	29	7	12	14	45	3	1	1 1/2				Damp Calm	
5	4	28	7	14	14	46	3	1	1 1/2				" light breeze var"	
6	4	28	7	14	14	47	3	1	1 1/2				" " " S.W	
7	4	28	7	15	14	48	3	1	1 1/2				" " " W	
8	4	28	7	16	14	49	3	1	1 3/4				Snow very " " N.E	
9	4	27	7	18	14	52	3	1	1 3/4				" " " " var	
10						53							Damp " " "	
11						55							" fresh wind N.W	
12						57							" " " " to N	
13						0							" light " var	
14						2							Dry " " "	
15													" " " "	
16														
17														
18														
19														
20														
21														
22														
23														
24														
25														
26														
27														
28														
29														
30														
31														

8.0.0.144 4.1.1.0

	GALLONS.	QUARTS.	PINTS.
Total quantity consumed in the lamp of the Light-Houses	8	0	0 5/16
Total quantity consumed this month for use in the dwelling-house or quarters, and other hand lamps	4	1	1
Total quantity expended this month	12	1	1 5/16

Order of Lens *4 + 5* Kind of Light *9 W + 7 R*  
 Number of Wicks in burner *One* Diameter of outer burner *1/2 + 1/4*  
 Written by me— *J. S. Morgan*  
*Keeper*

*J. S. Morgan*, Light-Keeper.  
 Ass't Keeper.



ACCOUNT of Oil, Wicks, and Chimneys expended daily at *Autonagon* Light-Houses in the month of *March* 1902, 1888  
 and showing the time of lighting and extinguishing, and the length of time lighted each night.

DAY.	Time of lighting.		Time of extinguishing the light.		Length of time lighted.		Daily quantity of oil consumed in Light-house or Light-vessel lamps.				Number of chimneys broken each night.	Inches of new wick expended.	Quantity of oil set aside for hand and house lamps.	REMARKS ON THE WEATHER. (Dry, damp, rainy, snowy, light wind, moderate breeze, fresh breeze, or gale, &c.)
	Hour.	Min.	Hour.	Min.	Hour.	Min.	Galls.	Qts.	Pints.	Gills.				
1														
2														
3														
4														
5														
6														
7														
8														
9														
10														
11														
12														
13														
14														
15														
16														
17														
18														
19														
20														
21														
22														
23														
24														
25														
26														
27														
28														
29	6	22	5	48	11	26	2	1	3/4		15			Dry light wind N
30	6	23	5	46	11	23	2	1	3/4					Snow fresh - N & N E
31	6	24	5	44	11	20	2	1	3/4					" " breeze N.W. & N
							2	0	1	3/4	15	3.3.1.0		

	GALLONS.	QUARTS.	PINTS.
Total quantity consumed in the lamp of the Light-Houses	2	0	1 7/16
Total quantity consumed this month for use in the dwelling-house or quarters, and other hand lamps	3	3	1
Total quantity expended this month	6	0	0 7/16

Order of Lens *4-5"* Kind of Light *Q.R.C.T.W.*  
 Number of Wicks in burner *one* Diameter of outer burner *1/4 + 1/8*  
 Written by me—  
*John Cogan*

*John Cogan*, Light-Keeper.  
 \_\_\_\_\_, Ass't Keeper.



ACCOUNT of Oil, Wicks, and Chimneys expended daily

*Autonagon*

Light-Houses in the month of

*April 1902*  
189

and showing the time of lighting and extinguishing, and the length of time lighted each night.

DAY.	Time of lighting.		Time of extinguishing the light.		Length of time lighted.		Daily quantity of oil consumed in Light-house or Light-vessel lamps.				Number of chimneys broken each night.	Inches of new wick expended.	Quantity of oil set aside for hand and house lamps.	REMARKS ON THE WEATHER. (Dry, damp, rainy, snowy, light wind, moderate breeze, fresh breeze, or gale, &c.)		
	Hour.	Min.	Hour.	Min.	Hour.	Min.	Galls.	Qts.	Pints.	Gills.						
1	6	25	5	43	11	18	2	1	3				Damp fresh wind N			
2	6	26	5	41	11	14	2	1	3				" light " var			
3	6	27	5	39	11	12	2	1	3				" Calm			
4	6	28	5	38	11	9	2	1	2 1/4				dry light breeze var			
5	6	29	5	36	11	6	2	1	2 3/4				damp " " "			
6	6	31	5	34	11	4	2	1	2 3/4				Snow gale N.E			
7	6	32	5	32	11	1	2	1	2 1/2				damp fresh wind " "			
8	6	33	5	31	10	58	2	1	2 1/2				" breeze S + N.E			
9	6	34	5	29	10	56	2	1	2 1/2				" light " var			
10	6	35	5	28	10	52	2	1	2 1/4				" fresh " N + N.E			
11	6	36	5	26	10	49	2	1	2 3/4				" light " var			
12	6	37	5	25	10	47	2	1	2 1/4		15		Snow Rain fresh " N.E			
13	6	38	5	23	10	44	2	1	2 1/4				Damp light " var			
14	6	40	5	21	10	41	2	1	2 1/4				" steady " "			
15	6	41	5	19	10	39	2	1	2 1/4				" " " S.W			
16	6	42	5	17	10	36	2	1	2 1/4				" fresh " var			
17	6	43	5	16	10	33	2	1	1 3/4				" light " N.E			
18	6	44	5	15	10	21	2	1	1 3/4				" " " var			
19	6	45	5	13	10	28	2	1	1 3/4				Rain " " N.W			
20	6	47	5	11	10	26	2	1	1 3/4				Damp fresh " var			
21	6	48	5	9	10	23	2	1	1 1/2				" " " N.E			
22	6	49	5	8	10	21	2	1	1 1/2				Rain " " var			
23	6	50	5	7	10	18	2	1	1 1/2				Snow " " N x E			
24	6	51	5	5	10	16	2	1	1 1/4				damp light " N			
25	6	52	5	4	10	13	2	1	1 3/4				Rain fresh " var			
26	6	53	5	3	10	11	2	1	1 1/4				" " " N.W			
27	6	54	5	1	10	9	2	1	1 1/4		15		Dry " " N			
28	6	55	4	59	10	5	2	1	1				Damp " " N			
29	6	56	4	58	10	1	2	1	1				" " " N.E			
30	6	57	4	57	9	59	2	1	1				" " " " "			
31							20	2	0	3		30	3	3	0	0

	GALLONS.	QUARTS.	PINTS.
Total quantity consumed in the lamp of the Light-Houses	20	2	3/4
Total quantity consumed this month for use in the dwelling-house or quarters, and other hand lamps	3	3	0
Total quantity expended this month	24	1	3/4

Order of Lens *4 7 5* Kind of Light *GR & F. W.*  
 Number of Wicks in burner *one* Diameter of outer burner *1 1/2 + 1/8*

Written by me—

*Autonagon*  
*Keiper*

*W. L. Keiper*, Light-Keeper.  
 \_\_\_\_\_, Ass't Keeper.



ACCOUNT of Oil, Wicks, and Chimneys expended daily at *Antigon* Light-House, in the month of *May 1902*, and showing the time of lighting and extinguishing, and the length of time lighted each night.

DAY.	Time of lighting.		Time of extinguishing the light.		Length of time lighted.		Daily quantity of oil consumed in Light-house or Light-vessel lamps.				Number of chimneys broken each night.	Inches of new wick expended.	Quantity of oil set aside for hand and house lamps.	REMARKS ON THE WEATHER. (Dry, damp, rainy, snowy, light wind, moderate breeze, fresh breeze, or gale, &c.)
	Hour.	Min.	Hour.	Min.	Hour.	Min.	Galls.	Qts.	Pints.	Gills.				
1	6	59	4	55	9	56	2	1	3/4				Rain fresh wind N.E	
2	7	0	4	54	9	53	2	1	3/4				" " " " var	
3	7	1	4	53	9	51	2	1	3/4				" fog " " "	
4	7	2	4	51	9	49	2	1	3/4				Damp " light " "	
5	7	3	4	50	9	47	2	1	3/4				Dry light breeze N.E	
6	7	4	4	49	9	44	2	1	3/4				Rain " " E	
7	7	5	4	48	9	42	2	1	3/4				Dry steady " W	
8	7	6	4	46	9	40	2	1	3/4				Damp gale " "	
9	7	7	4	45	9	38	2	1	3/4				" fresh wind N	
10	7	9	4	44	9	35	2	1	3/4		W		" " " " var	
11	7	10	4	43	9	33	2	1	3/4				Rain Calm	
12	7	11	4	42	9	31	2	1	3/4				" light breeze var	
13	7	12	4	41	9	29	2	1	3/4				Damp fresh " N.E	
14	7	13	4	40	9	27	2	1					Dry steady " " "	
15	7	14	4	39	9	25	2	1					" " " " var	
16	7	15	4	38	9	23	2	1					" light " " "	
17	7	16	4	37	9	21	2	1					" " " " "	
18	7	17	4	36	9	19	2	1					" " " " N.E	
19	7	18	4	35	9	17	2		3/4				Rain squally var	
20	7	19	4	34	9	15	2		3/4				" " " " "	
21	7	20	4	33	9	13	2		3/4				Dry fresh breeze SxW	
22	7	21	4	32	9	11	2		3/4				" " " " W	
23	7	22	4	31	9	9	2		3/4				" light " " var	
24	7	23	4	31	9	8	2		3/4		W		Rain fresh - N.WxW	
25	7	23	4	30	9	6	2		3/4				Fog Calm	
26	7	24	4	30	9	4	2		3/4				Rain steady breeze N.WxW	
27	7	25	4	29	9	3	2		3/4				Damp " " var	
28	7	26	4	28	9	1	2		3/4				Dry light " N.E	
29	7	27	4	27	9	0	2		3/4				" " " " var	
30	7	28	4	27	8	57	2		3/4				" " " " N.E	
31	7	29	4	26	8	57	2		3/4				" " " " var	

19 1 1 0 3/4 30 5 2 0 0

	GALLONS.	QUARTS.	PINTS.
Total quantity consumed in the lamp of the Light - <i>Houses</i>	19	1	1 1/2
Total quantity consumed this month for use in the dwelling-house or quarters, and other hand lamps	3	2	
Total quantity expended this month	22	3	1 1/2

Order of Lens. *4 + 5* Kind of Light. *2 W + 2 R*  
 Number of Wicks in burner. *One* Diameter of outer burner. *1/2 + 1/8*

Written by me—  
*J. A. Morgan*  
 Light-keeper

*J. A. Morgan*, Light-keeper.  
 Ass't Keeper.



and showing the time of lighting and extinguishing, and the length of time lighted each night.

DAY.	Time of lighting.		Time of extinguishing the light.		Length of time lighted.		Daily quantity of oil consumed in Light-house or Light-vessel lamps.				Number of chimneys broken each night.	Inches of new wick expended.	Quantity of oil set aside for hand and house lamps.	REMARKS ON THE WEATHER. (Dry, damp, rainy, snowy, light wind, moderate breeze, fresh breeze, or gale, &c.)	
	Hour.	Min.	Hour.	Min.	Hour.	Min.	Galls.	Qts.	Pints.	Gills.					
1	7	29	4	26	8	55	2		3 1/4					Rain light breeze N.E	
2	7	30	4	25	8	57	2		3 1/4					" Fog light breeze var	
3	7	31	4	25	8	54	2		3 1/4					" " " "	
4	7	32	4	25	8	52	2		3 1/4					dry light breeze S	
5	7	32	4	24	8	52	2		3 1/4					Rain " " " N	
6	7	33	4	24	8	57	3		3 1/4					" " " " W	
7	7	33	4	24	8	50	2		3 1/4					dry " " " "	
8	7	34	4	23	8	49	2		3 1/4					Damp " " " bar	
9	7	35	4	23	8	50	2		3 1/4					Rain fog " " " "	
10	7	35	4	23	8	50	2		3 1/4					" " " " "	
11	7	36	4	23	7	48	2		3 1/4					Damp fresh " " " W	
12	7	36	4	23	8	47	2		3 1/4					Fog light " " " bar	
13	7	36	4	23	8	46	2		3					Dazy dry. Calm	
14	7	37	4	23	8	45	2		3					" " " "	
15	7	38	4	23	8	44	2		3					" " fresh breeze W	
16	7	39	4	23	8	45	2		3					Rain steady " " "	
17	7	39	4	23	8	45	2		3					DRY " " " N.E	
18	7	39	4	23	8	43	2		3					Fog fresh " " " W	
19	7	39	4	23	8	43	2		3					Damp " " " " 15	
20	7	40	4	23	8	43	2		3					Fog rain " " " "	
21	7	40	4	23	8	43	2		3					Damp " " wind N.W	
22	7	40	4	23	8	43	2		3					dry " breeze W	
23	7	40	4	23	8	43	2		3					" light - bar	
24	7	40	4	24	8	43	2		3					" " " "	
25	7	40	4	24	8	43	2		3					Rain fresh " " " W	
26	7	40	4	25	8	43	2		3					Damp " wind N.W	
27	7	40	4	25	8	43	2		2 3/4					dry " breeze " -	
28	7	40	4	26	8	45	2		2 3/4					" light - " E	
29	7	40	4	26	8	45	2		2 3/4					" " " " var	
30	7	40	4	26	8	46	2		2 3/4					" " " " "	
31															

17 3 1 0 43:0.0

	GALLONS.	QUARTS.	PINTS.
Total quantity consumed in the lamp of the Light-Houses	17	3	1
Total quantity consumed this month for use in the dwelling-house or quarters, and other hand lamps	4	3	0
Total quantity expended this month	22	2	1

Order of Lens *4" + 5"* Kind of Light *P.R. & F.W.*  
 Number of Wicks in burner *one* Diameter of outer burner *1 1/2 + 1 1/8*

Written by me— *J. S. Logan*

*J. S. Logan*, Light-Keeper.  
 \_\_\_\_\_, Ass't Keeper.



and showing the time of lighting and extinguishing, and the length of time lighted each night.

DAY.	Time of lighting.		Time of extinguishing the light.		Length of time lighted.		Daily quantity of oil consumed in Light-house or Light-vessel lamps.				Number of chimneys broken each night.	Inches of new wick expended.	Quantity of oil set aside for hand and house lamps.	REMARKS ON THE WEATHER. (Dry, damp, rainy, snowy, light wind, moderate breeze, fresh breeze, or gale, &c.)
	Hour.	Min.	Hour.	Min.	Hour.	Min.	Galls.	Qts.	Pints.	Gills.				
1	7	40	4	27	8	46	2		2 3/4					Rain fog light breeze var
2	7	40	4	27	8	46	2		2 3/4					" " " " "
3	7	40	4	28	8	47	2		2 3/4					" " " " "
4	7	40	4	28	8	48	2		2 3/4		in dn 8 1/2			" " fresh " N.E
5	7	40	4	29	8	50	2		2 3/4					" " light " var
6	7	39	4	30	8	50	2		2 3/4					Damp " " S.W
7	7	39	4	30	8	51	2		3					Rain " " S.E
8	7	38	4	31	8	52	2		3					Damp " " S.W
9	7	38	4	32	8	53	2		3					" " " " N.E & S.W
10	7	37	4	33	8	54	2		3					Dry " " " var
11	7	37	4	33	8	56	2		3					" " " " "
12	7	37	4	34	8	56	2		3					" " " " "
13	7	36	4	35	8	58	2		3					" " " " var
14	7	35	4	36	8	59	2		3					" " " " "
15	7	55	4	37	9	1	2		3 1/2					Rain " " " var
16	7	34	4	37	9	3	2		3 1/4					" " very fresh " S
17	7	33	4	38	9	5	2		3 1/4					Dry fresh " var
18	7	33	4	39	9	5	2		3 1/4		in dn 8 1/2			" " Steady " N.E
19	7	32	4	40	9	7	2		3 1/4					" " light " var
20	7	31	4	41	9	9	2		3 1/2					" " " " "
21	7	31	4	41	9	11	2		3 1/2					" " " " "
22	7	30	4	42	9	13	2		3 1/2					" " " " "
23	7	30	4	43	9	14	2		3 1/2					" " Smoky " " "
24	7	28	4	44	9	16	2		3 1/2					" " " " "
25	7	29	4	45	9	18	2		3 1/2					Rain " " " "
26	7	30	4	45	9	19	2		3 3/4					Dry calm " "
27	7	25	4	47	9	22	2		3 3/4					" " light " var
28	7	24	4	48	9	24	2		3 3/4					" " " " N.E & S.E
29	7	23	4	49	9	26	2		3 3/4					Smoky rain " " var
30	7	22	4	50	9	28	3	1						Rain " " " "
31	7	21	4	57	9	30	2	1						

18 2 1 0 1/4      16 3/2 4.3.1.0

	GALLONS.	QUARTS.	PINTS.
Total quantity consumed in the lamp of the Light-Houses	18	2	1 1/2
Total quantity consumed this month for use in the dwelling-house or quarters, and other hand lamps	4	3	1
Total quantity expended this month	23	2	0 1/2

Order of Lens *4 + 5* Kind of Light *F.R. + F.W*  
 Number of Wicks in burner *one* Diameter of outer burner *1 1/2 + 1 1/8*

Written by me—  
*Jos Morgan*  
 Keeper

*Jos Morgan*, Light-Keeper.  
 Ass't Keeper.



ACCOUNT of Oil, Wicks, and Chimneys expended daily at *Autonagon* Light-Houses in the month of *August*, 1891  
and showing the time of lighting and extinguishing, and the length of time lighted each night.

DAY.	Time of lighting.		Time of extinguishing the light.		Length of time lighted.		Daily quantity of oil consumed in Light-house or Light-vessel lamps.				Number of chimneys broken each night.	Inches of new wick expended.	Quantity of oil set aside for hand and house lamps.	REMARKS ON THE WEATHER. (Dry, damp, rainy, snowy, light wind, moderate breeze, fresh breeze, or gale, &c.)
	Hour.	Min.	Hour.	Min.	Hour.	Min.	Galls.	Qts.	Pints.	Gills.				
1	7	20	4	52	9	32	2	1						Dry light breeze var
2	7	19	4	53	9	35	2	1	1/4		lit on 8 1/2			" " " " N.W.
3	7	18	4	54	9	37	2	1	1/4					" " " " N
4	7	17	4	55	9	39	2	1	1/4					Rain fresh - N x N
5	7	16	4	56	9	41	2	1	1/4					" very - wind N W x N
6	7	14	4	57	9	43	2	1	1/2					Damp light breeze var
7	7	13	4	58	9	46	2	1	1/2					Rain fresh wind N W x N E
8	7	12	4	59	9	48	2	1	1/2					Damp light breeze var
9	7	11	5	0	9	50	2	1	1/2					Dry " " " "
10	7	10	5	2	9	53	2	1	3/4					Damp fresh wind N.W.
11	7	8	5	3	9	55	2	1	3/4					" " " " " N
12	7	6	5	4	9	57	2	1	3/4					Dry steady breeze var
13	7	4	5	5	10	0	2	1	1					" light " "
14	7	3	5	6	10	2	2	1	1					" " " "
15	7	2	5	7	10	5	2	1	1					" " " "
16	7	0	5	8	10	7	2	1	1 1/4		lit on 8 1/2			" " " "
17	6	59	5	9	10	10	2	1	1 1/4					" " " " N.E.
18	6	57	5	10	10	13	2	1	1 1/4					Rain " " " var
19	6	56	5	11	10	16	2	1	1 1/2					" " " " "
20	6	55	5	12	10	18	2	1	1 1/2					Damp " " " "
21	6	53	5	13	10	21	2	1	1 1/2					" " " " "
22	6	51	5	14	10	23	2	1	1 1/2					" " " " "
23	6	49	5	15	10	26	2	1	1 3/4					Dry " " " " N.E.
24	6	48	5	17	10	28	2	1	1 3/4					Heavy calm
25	6	46	5	18	10	31	2	1	1 3/4					" " " " "
26	6	45	5	19	10	34	2	1	2					" " " " "
27	6	43	5	20	10	36	2	1	2					" dry light breeze S
28	6	41	5	21	10	39	2	1	2 1/4					" " " " " var
29	6	40	5	22	10	42	2	1	2 1/4					" " " " " N
30	6	38	5	23	10	44	2	1	2 1/4					Rain " " " "
31	6	36	5	24	10	47	2	1	2 1/2					" with squall N

20 2 0 of 16 1/2 5 0 2

	GALLONS.	QUARTS.	PINTS.
Total quantity consumed in the lamp of the Light-----	20	2	0 1/8
Total quantity consumed this month for use in the dwelling-house or quarters, and other hand lamps-----	5	0	0 1/2
Total quantity expended this month-----	25	2	0 7/8

Order of Lens *4 8 5* Kind of Light *3 R + 7 N*  
 Number of Wicks in burner *our* Diameter of outer burner *1 1/2 + 1 1/2*  
 Written by me—  
*J. Morgan*  
*Keeper*

*J. Morgan*, Light-Keeper.  
 Ass't Keeper.



ACCOUNT of Oil, Wicks, and Chimneys expended daily at *Ontonagon*

Light-House in the month of *Sept* 1902 **ES**

and showing the time of lighting and extinguishing, and the length of time lighted each night.

DAY.	Time of lighting.		Time of extinguishing the light.		Length of time lighted.		Daily quantity of oil consumed in Light-house or Light-vessel lamps.				Number of chimneys broken each night.	Inches of new wick expended.	Quantity of oil set aside for hand and house lamps.	REMARKS ON THE WEATHER. (Dry, damp, rainy, snowy, light wind, moderate breeze, fresh breeze, or gale, &c.)	
	Hour.	Min.	Hour.	Min.	Hour.	Min.	Galls.	Qts.	Pints.	Gills.					
1	6	35	5	25	10	49	2	1	2 1/2		8	1/2		Damp light breeze var	
2	6	33	5	26	10	53	2	1	2 1/2					Rain Squall W	
3	6	31	5	27	10	58	2	1	2 3/4					" " Gale "	
4	6	30	5	28	10	58	2	1	2 3/4					Damp light wind S	
5	6	28	5	29	11	1	2	1	2 3/4					" " " var	
6	6	26	5	30	11	4	2	1	2 3/4					Dry " " S	
7	6	25	5	31	11	7	2	1	3					" Calm	
8	6	23	5	32	11	11	2	1	3					Damp fresh wind NW x N	
9	6	21	5	33	11	13	2	1	3					" " " W	
10	6	19	5	34	11	15	2	1	3 1/4					Dry Steady " "	
11	6	18	5	35	11	18	2	1	3 1/4					Half Gale W	
12	6	16	5	36	11	21	2	1	3 1/4					Dry very fresh wind NW	
13	6	14	5	37	11	25	2	1	3 1/2					" light breeze var	
14	6	12	5	39	11	26	2	1	3 1/2					" " " W	
15	6	10	5	40	11	29	2	1	3 1/2					" " " var	
16	6	9	5	41	11	31	2	1	3 1/4		8	1/2		Rain fresh wind S	
17	6	7	5	42	11	33	2	1	3 1/4					Damp light " var	
18	6	5	5	43	11	35	2	1	3 1/4					" " " W	
19	6	4	5	44	11	38	2	1	3 1/4					" fresh " W	
20	6	2	5	45	11	41	3							Rain Steady breeze S	
21	6	0	5	46	11	46	3							" Fog Calm "	
22	5	58	5	47	11	49	3		1/4					Damp light breeze var	
23	5	57	5	48	11	52	3		1/4					" " " "	
24	5	55	5	49	11	55	3		1/4					Dry " " S + SE	
25	5	53	5	50	11	57	3		1/2					" " " var	
26	5	51	5	51	12	0	3		1/2					" " " S	
27	5	50	5	52	12	3	3		1/2					Rain fresh wind N.E.	
28	5	48	5	54	12	6	3		1/4					Hazy damp light breeze S	
29	5	46	5	55	12	8	3		3/4					" " " var	
30	5	44	5	56	12	12	3		3/4					Dry " " "	
31															

220 0 2 1/4      5 0 1 0

	GALLONS.	QUARTS.	PINTS.
Total quantity consumed in the lamp of the Light-House	22	0	9 1/6
Total quantity consumed this month for use in the dwelling-house or quarters, and other hand lamps	5	0	1
Total quantity expended this month	27	0	10 1/6

Order of Lens *4" + 5"* Kind of Light *PR & IR*  
 Number of Wicks in burner *one* Diameter of outer burner *1 1/2 + 1 1/8*

Written by me—  
*J. J. Morgan*  
 Keeper

*J. J. Morgan*, Light-Keeper.  
 Ass't Keeper.



ACCOUNT of Oil, Wicks, and Chimneys expended daily *at Outonagon* Light-Houses in the month of *Octr* 1902-189  
 and showing the time of lighting and extinguishing, and the length of time lighted each night.

DAY.	Time of lighting.		Time of extinguishing the light.		Length of time lighted.		Daily quantity of oil consumed in Light-house or Light-vessel lamps.				Number of chimneys broken each night.	Inches of new wick expended.	Quantity of oil set aside for hand and house lamps.	REMARKS ON THE WEATHER. (Dry, damp, rainy, snowy, light wind, moderate breeze, fresh breeze, or gale, &c.)
	Hour.	Min.	Hour.	Min.	Hour.	Min.	Galls.	Qts.	Pints.	Gills.				
1	5	42	5	57	12	5		3		3/4		1/8	1/2	Damp light breeze var
2	5	41	5	58	12	18		3		1				" fresh - "R
3	5	39	5	59	12	20		3		1				Dry light - var
4	5	37	6	0	12	23		3		1				" " " "R
5	5	35	6	1	12	26		3		1 1/4				" Calm
6	5	33	6	3	12	29		3		1 1/4				" fresh a var
7	5	32	6	4	12	31		3		1 1/4				" " wind "R
8	5	30	6	5	12	34		3		1 1/4				" light - var
9	5	29	6	6	12	38		3		1 1/2				" " " "R
10	5	27	6	7	12	40		3		1 1/2				" Hazy very light breeze
11	5	25	6	8	12	45		3		1 1/2				" " " " var
12	5	24	6	9	12	45		3		1 1/2				Damp " " " "R
13	5	22	6	10	12	48		3		1 3/4				Snow Rain 1/2 gale "R Ex "R
14	5	20	6	12	12	51		3		1 3/4				Damp fresh wind "R Ex "R
15	5	19	6	13	12	54		5		1 3/4				" Very " " " "
16	5	17	6	14	12	57		5		2 1/2		8 1/2		" light breeze S
17	5	16	6	15	13	0		3		2				" Hazy " " var
18	5	14	6	16	13	2		3		2				" fresh wind "R
19	5	13	6	17	13	5		3		2 1/4				" 1/2 gale " "
20	5	11	6	19	13	7		3		2 1/4				Dry light breeze "R "R "R
21	5	9	6	20	13	11		3		2 1/4				" 1/2 gale "R "E
22	5	8	6	21	13	13		3		2 1/2				Damp fresh wind " "
23	5	7	6	22	13	16		3		2 1/2				" " " " " "
24	5	6	6	23	13	18		3		2 1/2				Rain very " " "R
25	5	4	6	25	13	21		3		2 3/4				" " " " " "
26	5	2	6	26	13	24		3		2 3/4				" Snow " " " "
27	5	1	6	27	13	26		3		2 3/4				Damp fresh wind "R "R "R
28	5	0	6	28	13	29		3		3				" light - var
29	4	58	6	30	13	31		3		3				" " " " S
30	4	57	6	31	13	34		3		3		8 1/2		" " " " var
31	4	55	6	32	13	37		3		3 1/4				Dry " breeze S

25.0 " 1.0 3/4 16 1/2 5.1.1 0

	GALLONS.	QUARTS.	PINTS.
Total quantity consumed in the lamp of the Light-Houses	25	0	1 3/4
Total quantity consumed this month for use in the dwelling-house or quarters, and other hand lamps	5	1	1
Total quantity expended this month	30	2	0 3/4

Order of Lens *4 + 5"* Kind of Light *P.R.T.M*  
 Number of Wicks in burner *cur* Diameter of outer burner *1 1/2 + 1 1/8 inches*  
 Written by me— *Jas Longman*  
*Keeper*

*Jas Longman*, Light-Keeper.  
 \_\_\_\_\_, Ass't Keeper.



ACCOUNT of Oil, Wicks, and Chimneys expended daily at *Cantonagon* Light-House, in the month of *NOV 1902* 189  
 and showing the time of lighting and extinguishing, and the length of time lighted each night.

DAY.	Time of lighting.		Time of extinguishing the light.		Length of time lighted.		Daily quantity of oil consumed in Light-house or Light-vessel lamps.				Number of chimneys broken each night.	Inches of new wick expended.	Quantity of oil set aside for hand and house lamps.	REMARKS ON THE WEATHER. (Dry, damp, rainy, snowy, light wind, moderate breeze, fresh breeze, or gale, &c.)	
	Hour.	Min.	Hour.	Min.	Hour.	Min.	Galls.	Qts.	Pints.	Gills.					
1	4	53	6	34	13	39	3				3/4			Rain fog Calm	
2	4	51	6	36	13	41	3				3/4			" 1/2 gale S to NW	
3	4	50	6	37	13	45	3				3/4			Damp light breeze var	
4	4	49	6	38	13	47	3				3/4			" Steady - SW	
5	4	48	6	39	13	49	3				3/4			Rain snow fresh wind NW NE	
6	4	47	6	41	13	51	3				3/4			" " " " NE	
7	4	46	6	42	13	54	3				3/4			Damp steady breeze SW	
8	4	45	6	43	13	57	3				3/4			" light - var	
9	4	44	6	44	13	59	3				1			" fresh - N.E.	
10	4	43	6	45	14	1	3				1			" light - var	
11	4	42	6	47	14	4	3				1			Rain " " SW	
12	4	41	6	48	14	6	3				1 1/2			" Steady - N.E.	
13	4	40	6	49	14	9	3				1 1/2			Damp light - var	
14	4	39	6	50	14	10	3				1 1/2			Rain Snow fresh wind NE	
15	4	38	6	52	14	12	3				1 1/2			Damp light breeze var	
16	4	37	6	53	14	14	3				1 1/2			" " " "	
17	4	36	6	55	14	16	3				1 1/2			" " " " SW x S	
18	4	35	6	56	14	18	3				1 1/2			Rain " " " "	
19	4	34	6	57	14	21	3				1 1/2			Dry light - var	
20	4	33	6	58	14	23	3				1 1/2			Damp " " " "	
21	4	32	6	0	14	24	3				1 1/2			" " " " SW	
22	4	31	7	1	14	26	3				1			" fresh wind N.W.	
23	4	32	7	2	14	28	3				1			" breeze S	
24	4	31	7	3	14	30	3				1			" Steady " "	
25	4	31	7	4	14	32	3				1 1/4			" fresh " " N x W	
26	4	31	7	5	14	30	3				1 1/4			Snow " " " " N.E.	
27	4	31	7	6	14	35	3				1 1/4			Damp light " var	
28	4	30	7	6	14	36	3				1 1/2			" " " " "	
29	4	30	7	7	14	37	3				1 1/4			Snow 1/2 gale N.W. N	
30	4	29	7	8	14	39	3				1 1/2			Damp light breeze " " "	
31															

26 2 1 0 14 16 1/2 5 2 1 0

	GALLONS.	QUARTS.	PINTS.
Total quantity consumed in the lamp of the Light-House	26	2	1 1/2
Total quantity consumed this month for use in the dwelling-house or quarters, and other hand lamps	5	2	1
Total quantity expended this month	32	1	0 1/2

Order of Lens *4 + 5* Kind of Light *2 R + 2 W*  
 Number of Wicks in burner *One* Diameter of outer burner *1 1/8 + 1 inch*  
 Written by me—  
*James Morgan*  
 Keeper

*James Morgan*, Light-Keeper.  
 Ass't Keeper.



ACCOUNT of Oil, Wicks, and Chimneys expended daily at *Autonagon*

Light-Houses, in the month of *Decr* 1902, 189.

and showing the time of lighting and extinguishing, and the length of time lighted each night.

DAY.	Time of lighting.		Time of extinguishing the light.		Length of time lighted.		Daily quantity of oil consumed in Light-house or Light-vessel lamps.				Number of chimneys broken each night.	Inches of new wick expended.	Quantity of oil set aside for hand and house lamps.	REMARKS ON THE WEATHER. (Dry, damp, rainy, snowy, light wind, moderate breeze, fresh breeze, or gale, &c.)
	Hour.	Min.	Hour.	Min.	Hour.	Min.	Galls.	Qts.	Pints.	Gills.				
1	4	29	7	9	14	41	3	1	1/2					Damp fresh wind N.W. x W
2	4	29	7	10	14	42	3	1	1/2					" light " " E x E
3	4	29	7	11	14	42	3	1	1/2					Snow fresh " " N.W. x N
4	4	29	7	12	14	45	3	1	1/2					" light " " var
5	4	28	7	14	14	46	3	1	1/4					" " " " S E
6	4	28	7	14	14	47	3	1	1/4					" Steady " " N.W
7	4	28	7	15	14	48	3	1	1/4					" 1/2 gale " " N.W
8	4	28	7	16	14	49	3	1	1/4					Damp fresh breeze S W
9	4	28	7	17	14	50	3	1	1/4					Snow - - -
10														
11														
12														
13														
14														
15														
16														
17														
18														
19														
20														
21														
22														
23														
24														
25														
26														
27														
28														
29														
30														
31														

9 1 0 2 3/4      53.11

	GALLONS.	QUARTS.	PINTS.
Total quantity consumed in the lamp of the Light-Houses	14	1	15/6
Total quantity consumed this month for use in the dwelling-house or quarters, and other hand lamps			
Total quantity expended this month			

{ Order of Lens *4 + 5* Kind of Light *Q.R. S.W.*  
 { Number of Wicks in burner *one* Diameter of outer burner *1/2 + 1/8*  
 Written by me— *James Logan*

*James Logan*, Light-Keeper.  
 \_\_\_\_\_, Ass't Keeper.



ACCOUNT of Oil, Wicks, and Chimneys expended daily at *Ontonagon* Light-House, in the month of *April*, 188*8* 1903  
 and showing the time of lighting and extinguishing, and the length of time lighted each night.

DAY.	Time of lighting.		Time of extinguishing the light.		Length of time lighted.		Daily quantity of oil consumed in Light-house or Light-vessel lamps.				Number of chimneys broken each night.	Inches of new wick expended.	Quantity of oil set aside for hand and house lamps.	REMARKS ON THE WEATHER. (Dry, damp, rainy, snowy, light wind, moderate breeze, fresh breeze, or gale, &c.)		
	Hour.	Min.	Hour.	Min.	Hour.	Min.	Galls.	Qts.	Pints.	Gills.						
1																
2																
3																
4																
5																
6																
7																
8	6	33	5	31	10	08	2	1	2 1/2			5 1/2	2 1/2		Damp light wind var	
9	6	34	5	29	10	53	2	1	2 1/2			8	1/2		" " " "	
10	6	35	5	28	10	52	2	1	2 1/2						" " " S E x S	
11	6	36	5	26	10	49	2	1	2 1/2						Rain " " var	
12	6	37	5	25	10	49	2	1	2 1/2						" " " S E x S E.	
13	6	38	5	23	10	44	2	1	2 1/2						Damp fresh breeze N. E.	
14	6	40	5	21	10	41	2	1	2						- - - - -	
15	6	41	5	19	10	39	2	1	2						- - - - -	
16	6	42	5	17	10	36	2	1	2						- - - - -	
17	6	43	5	16	10	33	2	1	1 1/2						- light - - -	
18	6	44	5	15	10	31	2	1	1 1/2						- fresh - S E x N. E.	
19	6	45	5	13	10	28	2	1	1 1/2						- - - - -	
20	6	47	5	11	10	26	2	1	1 1/2						- - - - -	
21	6	48	5	9	10	23	2	1	1 1/2						- - - N. E.	
22	6	49	5	8	10	21	2	1	1 1/2						- light - " var	
23	6	50	5	7	10	18	2	1	1 1/2						- fresh - N. E.	
24	6	57	5	5	10	16	2	1	1 1/2						8 1/2 Snow very - wind N. E. x N.	
25	6	52	5	4	10	13	2	1	1 1/2						Damp light breeze N. W.	
26	6	53	5	3	10	11	2	1	1 1/2						Dry " " N. E.	
27	6	54	5	1	10	8	2	1	1						" very fresh wind S W	
28	6	55	4	0	10	4	2	1	1						Damp light breeze var	
29	6	56	4	59	10	1	2	1	1						Rain Snow 1/2 gale N. E.	
30	6	57	4	57	9	59	2	1	1						Snow - - - - - N.	
31																

15 2 0 5 1/4      16 1/8      5 2 1 1

	GALLONS.	QUARTS.	PINTS.
Total quantity consumed in the lamp of the Light-	15	2	13/16
Total quantity consumed this month for use in the dwelling-house or quarters, and other hand lamps	5	2	1 1/4
Total quantity expended this month	21	1	1/16

Order of Lens *4 + 5* Kind of Light *2 R + 7 W*  
 Number of Wicks in burner *one* Diameter of outer burner *1 1/2 + 1 1/8 inches*

Written by me— *Joe Morgan*  
*Keeper*

*Joe Morgan*, Light-Keeper.  
 \_\_\_\_\_, Ass't Keeper.



ACCOUNT of Oil, Wicks, and Chimneys expended daily *at Antigonish* Light-Houses in the month of *May 1903*, 1899  
 and showing the time of lighting and extinguishing, and the length of time lighted each night.

DAY.	Time of lighting.		Time of extinguishing the light.		Length of time lighted.		Daily quantity of oil consumed in Light-house or Light-vessel lamps.				Number of chimneys broken each night.	Inches of new wick expended.	Quantity of oil set aside for hand and house lamps.	REMARKS ON THE WEATHER. (Dry, damp, rainy, snowy, light wind, moderate breeze, fresh breeze, or gale, &c.)
	Hour.	Min.	Hour.	Min.	Hour.	Min.	Galls.	Qts.	Pints.	Gills.				
1	6	59	4	55	9	56	2	1	3/4					Rain light bore var
2	7	0	4	54	9	53	2	1	3/4					Damp fog - - -
3	7	1	4	53	9	51	2	1	3/4					" - - -
4	7	2	4	51	9	49	2	1	1/2					Rain - - - N
5	7	3	4	50	9	47	2	1	1/2					Damp - - - N + W
6	7	4	4	49	9	44	2	1	1/2					" - - - var
7	7	5	4	48	9	42	2	1	1/2		in on 8 1/2			Dry - - - N
8	7	6	4	46	9	40	2	1	1/4					" fresh - S
9	7	7	4	45	9	38	2	1	1/4					" light - var
10	7	9	4	44	9	35	2	1	1/4					Rain fog calm
11	7	10	4	43	9	33	2	1						" light bore var
12	7	11	4	42	9	31	2	1						- - - N.E
13	7	12	4	41	9	29	2	1						- Fog calm
14	7	13	4	40	9	27	2	1						Fog light bore N.E
15	7	14	4	39	9	25	2		3/4					Dry - - - var
16	7	15	4	38	9	23	2		3/4					" - - -
17	7	16	4	37	9	21	2		3/4					Rain fresh - S
18	7	17	4	36	9	19	2		3/4					Damp - - - N
19	7	18	4	35	9	17	2		3/4					Rainsquall S W + N
20	7	19	4	34	9	15	2		3/4					" light bore var
21	7	20	4	33	9	13	2		3/4					Dry - - - N.E
22	7	21	4	32	9	11	2		3/4		8 1/2			Rain fresh - - -
23	7	22	4	31	9	9	2		3/4					" light - var
24	7	23	4	31	9	8	2		3/4					Dry - - -
25	7	23	4	30	9	6	2		3/4					Rain - - - N
26	7	24	4	30	9	4	2		3/4					- fog - - - var
27	7	25	4	29	9	3	2		3/4					- steady - N
28	7	26	4	28	9	1	2		3/4					- light - - + N.E
29	7	27	4	27	9	0	2		3/4					Damp steady - N.E
30	7	28	4	27	8	59	2		3					Rain fresh - - -
31	7	29	4	26	8	57	2		3					- - - - -

19 0 1 3/4 5.2.0.0

	GALLONS.	QUARTS.	PINTS.
Total quantity consumed in the lamp of the Light-Houses	19	0	1 3/4
Total quantity consumed this month for use in the dwelling-house or quarters, and other hand lamps	5	2	0
Total quantity expended this month	24	2	1 3/4

Order of Lens *4 1/2* Kind of Light *9 R + 7 W*  
 Number of Wicks in burner *one* Diameter of outer burner *1 1/2 + 1 1/2 inches*  
 Written by me— *John Morgan* Light-Keeper.  
*John Morgan* Ass't Keeper.



ACCOUNT of Oil, Wicks, and Chimneys expended daily at *Autonagon* Light-House, in the month of *June*, 1903, and showing the time of lighting and extinguishing, and the length of time lighted each night.

DAY.	Time of lighting.		Time of extinguishing the light.		Length of time lighted.		Daily quantity of oil consumed in Light-house or Light-vessel lamps.				Number of chimneys broken each night.	Inches of new wick expended.	Quantity of oil set aside for hand and house lamps.	REMARKS ON THE WEATHER. (Dry, damp, rainy, snowy, light wind, moderate breeze, fresh breeze, or gale, &c.)
	Hour.	Min.	Hour.	Min.	Hour.	Min.	Galls.	Qts.	Pints.	Gills.				
1	7	29	4	26	8	55	2			3				Damp steady breeze N.E.
2	7	30	4	25	8	55	2			3				" " " " "
3	7	31	4	25	8	52	2			3				Dry very light - - -
4	7	32	4	24	8	52	2			3		8 1/2		Damp " " " "
5	7	32	4	24	8	52	2			3 3/4				Dry " " " "
6	7	32	4	24	8	52	2			2 1/4				" " " " var"
7	7	33	4	23	8	50	2			2 1/4				" Steady - - - W
8	7	34	4	23	8	49	2			2 3/4				Rain light - - - var"
9	7	35	4	23	8	48	2			2 3/4				Damp fresh - - - N.E.
10	7	36	4	23	8	48	2			2 1/4				" " wind " "
11	7	36	4	23	8	46	2			2 3/4				Dry light breeze var"
12	7	36	4	23	8	45	2			2 1/4				" " " " -
13	7	36	4	23	8	45	2			2 1/4				" " " " NW
14	7	37	4	23	8	44	2			2 1/4				" Calm
15	7	38	4	23	8	44	2			2 1/4				Rain light breeze var"
16	7	38	4	23	8	44	2			2 1/4				Damp - - - "
17	7	38	4	23	8	43	2			2 1/4				Rain - - - -
18	7	39	4	23	8	43	2			2 1/4				Damp fresh wind N.E.
19	7	39	4	23	8	43	2			2 1/4		8 1/2		" light breeze var"
20	7	40	4	23	8	43	2			2 1/4				" Steady - - - N to N.E.
21	7	40	4	23	8	43	2			2 1/4				Dry Calm
22	7	40	4	23	8	43	2			2 1/4				Fog - - - -
23	7	40	4	24	8	43	2			2 1/4				Damp light breeze var"
24	7	40	4	24	8	43	2			2 1/4				Dry Calm
25	7	40	4	24	8	43	2			2 1/4				" light breeze var"
26	7	40	4	25	8	43	2			2 1/4				" Calm
27	7	40	4	25	8	43	2			2 1/4				" Light breeze NW & SW
28	7	40	4	26	8	45	2			2 1/4				Rain fog Calm
29	7	40	4	26	8	45	2			2 1/4				Dry light breeze var"
30	7	40	4	26	8	46	2			2 1/4				Fog - - - SW
31														

17 1 1 3/4 16 1/2 5.1.1.0

	GALLONS.	QUARTS.	PINTS.
Total quantity consumed in the lamp of the Light-House	17	1	1 13/16
Total quantity consumed this month for use in the dwelling-house or quarters, and other hand lamps	5	1	1
Total quantity expended this month	22	3	2 10/16

Order of Lens *4 + v* Kind of Light *GR + FR*  
 Number of Wicks in burner *one* Diameter of outer burner *1 1/2 + 1 1/8*  
 Written by me—  
*John Corgan*  
 Keeper

*John Corgan* Light-Keeper.  
 Ass't Keeper.



ACCOUNT of Oil, Wicks, and Chimneys expended daily at *Antonagon* Light-House in the month of *July*, 189 *1903*  
 and showing the time of lighting and extinguishing, and the length of time lighted each night.

DAY.	Time of lighting.		Time of extinguishing the light.		Length of time lighted.		Daily quantity of oil consumed in Light-house or Light-vessel lamps.				Number of chimneys broken each night.	Inches of new wick expended.	Quantity of oil set aside for hand and house lamps.	REMARKS ON THE WEATHER. (Dry, damp, rainy, snowy, light wind, moderate breeze, fresh breeze, or gale, &c.)
	Hour.	Min.	Hour.	Min.	Hour.	Min.	Galls.	Qts.	Pints.	Gills.				
1	7	40	4	27	8	46	2			2 1/2				Rain steady breeze W
2	7	40	4	27	8	46	2			2 1/2				" light " var"
3	7	40	4	28	8	47	2			2 1/2		in	8 1/2	Damp " " "
4	7	40	4	28	8	48	2			2 1/2				Rain fog light " W
5	7	39	4	29	8	50	2			2 1/2				Dry " " var"
6	7	39	4	30	8	50	2			2 1/2				" fresh " S
7	7	39	4	30	8	51	2			2 1/2				" " " S W
8	7	38	4	31	8	52	2			2 1/2				" Steady " W
9	7	38	4	32	8	53	2			2 3/4				Rain squall " W x W
10	7	37	4	33	8	54	2			2 3/4				Rain light breeze var"
11	7	37	4	33	8	53	2			2 3/4				" Steady " W
12	7	37	4	34	8	56	2			2 3/4				Damp " " "
13	7	36	4	35	8	58	2			2 3/4				Dry light " var
14	7	35	4	36	8	59	2			2 3/4				" " " N.E
15	7	35	4	37	9	1	2	3						" " " var
16	7	34	4	37	9	3	2	3						Damp " " W
17	7	33	4	38	9	5	2	3						Fog " " var"
18	7	33	4	39	9	5	2	3				in	8 1/2	" " " "
19	7	32	4	40	9	7	2	3 1/4						" Rain " " "
20	7	31	4	41	9	9	2	3 1/4						" Light " W
21	7	31	4	41	9	11	2	3 1/4						Damp " " "
22	7	30	4	42	9	12	2	3 1/4						Rain " " var
23	7	29	4	43	9	14	2	3 1/4						Damp " " "
24	7	28	4	44	9	16	2	3 1/2						Dry steady " S.W
25	7	27	4	45	9	18	2	3 1/2						Rain " " "
26	7	26	4	46	9	20	2	3 1/2						Damp light " N.E
27	7	25	4	47	9	22	2	3 3/4						Rain " " var
28	7	24	4	48	9	24	2	3 3/4						" Fog " " "
29	7	23	4	49	9	26	2	3 3/4						" Steady " W
30	7	22	4	50	9	28	2	3 3/4						" fresh " W "
31	7	21	4	57	9	30	2	1						Damp light " var"

18 1 1 2 1/4      5.2 1.0

	GALLONS.	QUARTS.	PINTS.
Total quantity consumed in the lamp of the Light-House	18	1	1 1/6
Total quantity consumed this month for use in the dwelling-house or quarters, and other hand lamps	5	2	1
Total quantity expended this month	24	3	2 1/6

Order of Lens *4 + 5* Kind of Light *2 W & 7 R*  
 Number of Wicks in burner *one* Diameter of outer burner *1 1/2 + 1 1/8*  
 Written by me— *Joe Lorgan* Light-Keeper.  
*Joe Lorgan* Ass't Keeper.



ACCOUNT of Oil, Wicks, and Chimneys expended daily at *Autonagon* Light House, in the month of *August 1903*, 1899  
 and showing the time of lighting and extinguishing, and the length of time lighted each night.

DAY.	Time of lighting		Time of extinguishing the light.		Length of time lighted.		Daily quantity of oil consumed in Light-house or Light-vessel lamps.				Number of chimneys broken each night.	Inches of new wick expended.	Quantity of oil set aside for hand and house lamps.	REMARKS ON THE WEATHER. (Dry, damp, rainy, snowy, light wind, moderate breeze, fresh breeze, or gale, &c.)
	Hour.	Min.	Hour.	Min.	Hour.	Min.	Galls.	Qts.	Pints.	Gills.				
1	7	20	4	52	9	32	2	1						Damp steady breeze S
2	7	19	4	53	9	34	2	1						Rain fresh " E S E
3	7	18	4	54	9	37	2	1						" fog light " bar
4	7	17	4	56	9	39	2	1						" " " " "
5	7	16	4	56	9	41	2	1	1/4					" " " " " N E
6	7	14	4	57	9	43	2	1	1/4					" fresh wind " " N
7	7	13	4	58	9	46	2	1	1/4					" fog steady breeze N W
8	7	12	4	59	9	48	2	1	1/4					Damp steady " " W
9	7	11	5	0	9	50	2	1	1/2					" " " " " bar
10	7	10	5	2	9	53	2	1	1/2					Rain fog fresh wind N W * N E
11	7	9	5	4	9	56	2	1	1/2					" light " " bar
12	7	6	5	5	9	57	2	1	3/4					Damp " " " W
13	7	4	5	6	10		2	1	3/4					" " " " " N E
14	7	3	5	7	10	2	2	1	3/4					" " " " " bar
15	7	2	5	7	10	4	2	1	3/4					" " " " " "
16	7		5	8	10	6	2	1	3/4					Rain " breeze W
17	6	59	5	9	10	10	2	1	1					" fresh " " "
18	6	57	5	10	10	13	2	1	1					Dry steady " " "
19	6	56	5	11	10	16	2	1	1					" light " " " bar
20	6	55	5	12	10	18	2	1	1 1/4					Rain " " " "
21	6	53	5	13	10	21	2	1	1 1/4					Dry fresh wind S W
22	6	51	5	14	10	23	2	1	1 1/4					" light breeze bar
23	6	49	5	15	10	26	2	1	1 1/4					Damp " " " "
24	6	48	5	17	10	28	2	1	1 1/2					Rain " " " " N E
25	6	46	5	18	10	31	2	1	1 1/2					" " " " " bar
26	6	45	5	19	10	34	2	1	1 3/4					Damp " " " " N E
27	6	43	5	20	10	36	2	1	1 3/4					Rain fresh " " " "
28	6	41	5	21	10	39	2	1	1 3/4					" " " " " "
29	6	40	5	22	10	42	2	1	2					" light " " " "
30	6	38	5	23	10	44	2	1	2					Damp " " " " " bar
31	6	36	5	24	10	47	2	1	2					Dry " " " " " "

20 1 0 0 1/4 16 1/2 5 2 1 0

	GALLONS.	QUARTS.	PINTS.
Total quantity consumed in the lamp of the Light House	20	1	3/6
Total quantity consumed this month for use in the dwelling-house or quarters, and other hand lamps	5	2	1
Total quantity expended this month	25	3	1 3/6

Order of Lens  $4 + 5$  Kind of Light  $P-R + T W$   
 Number of Wicks in burner *one* Diameter of outer burner  $1 1/2 + 1 1/8$

Written by me—

*Just Morgan*  
*Keeper*

*Just Morgan*, Light-Keeper.  
 Ass't Keeper.



ACCOUNT of Oil, Wicks, and Chimneys expended daily *Outwagon*

Light-House, in the month of *Sept* 1903, 189

and showing the time of lighting and extinguishing, and the length of time lighted each night.

DAY.	Time of lighting.		Time of extinguishing the light.		Length of time lighted.		Daily quantity of oil consumed in Light-house or Light-vessel lamps.				Number of chimneys broken each night.	Inches of new wick expended.	Quantity of oil set aside for hand and house lamps.	REMARKS ON THE WEATHER. (Dry, damp, rainy, snowy, light wind, moderate breeze, fresh breeze, or gale, &c.)
	Hour.	Min.	Hour.	Min.	Hour.	Min.	Galls.	Qts.	Pints.	Gills.				
1	6	35	5	25	10	49	2	1	2 1/4			8 1/2	Damp light breeze var	
2	6	33	5	26	10	53	2	1	2 1/4				Rain Calm	
3	6	31	5	27	10	58	2	1	2 1/4				Damp steady breeze S.W.	
4	6	30	5	29	10	59	2	1	2 1/4				Dry " " "	
5	6	28	5	29	11	1	2	1	2 1/4				" light " var	
6	6	26	5	30	11	4	2	1	2 1/4				Damp " " N.E.	
7	6	25	5	31	11	7	2	1	2 3/4				Rain fresh wind S	
8	6	23	5	32	11	10	2	1	2 3/4				" " " "	
9	6	21	5	33	11	12	2	1	2 3/4				Damp light breeze var	
10	6	19	5	34	11	15	2	1	2 3/4				Rain " " "	
11	6	18	5	35	11	18	2	1	3				" " " "	
12	6	16	5	36	11	21	2	1	3				" " " "	
13	6	14	5	37	11	23	2	1	3 1/4				" " " "	
14	6	12	5	39	11	26	2	1	3 1/4			8 1/2	" fresh wind N	
15	6	10	5	40	11	29	2	1	3 1/4				" " " N.E.	
16	6	9	5	41	11	32	2	1	3 1/2				" " " "	
17	6	7	5	42	11	34	2	1	3 1/2				Damp " " var	
18	6	5	5	43	11	38	2	1	3 1/2				" light breeze S N	
19	6	4	5	44	11	41	2	1	3 3/4				Dry fresh " " "	
20	6	2	5	45	11	44	2	1	3 3/4				" Steady " N	
21	6	0	5	46	11	46	2	1	3 3/4				" fresh wind S.W.	
22	5	58	5	47	11	49	3						" dry - - -	
23	5	57	5	48	11	52	3						Damp 1/2 gale N.W.	
24	5	55	5	49	11	55	3		1/4				Dry light wind S.W.	
25	5	53	5	50	11	58	3		1/4				" " " S	
26	5	51	5	51	12		3		1/4				Damp 1/2 gale N.W.	
27	5	52	5	50	12	03	3		1/2				Rain by fresh wind - -	
28	5	53	5	54	12	06	3		1/2				Dry " breeze S.W.	
29	5	55	5	55	12	08	3		1/2			8 1/2	" light - " "	
30	5	56	5	56	12	12	3		3/4				" " " "	
31														

21 3 1 1 1/4 16 1/2

	GALLONS.	QUARTS.	PINTS.
Total quantity consumed in the lamp of the Light-Houses	21	3	1 3/6
Total quantity consumed this month for use in the dwelling-house or quarters, and other hand lamps	7	2	1
Total quantity expended this month	29	3	7/12

Order of Lens *4 + 5* Kind of Light *DR + 5 W*  
 Number of Wicks in burner *One* Diameter of outer burner *1 1/2 + 1/8*  
 Written by me *J. Morgan*  
*Keeper*

*J. Morgan*, Light-Keeper.  
 Ass't Keeper.



ACCOUNT of Oil, Wicks, and Chimneys expended daily at *Cutwagon* Light-Houses, in the month of *October*, 189*1* 1903  
 and showing the time of lighting and extinguishing, and the length of time lighted each night.

DAY.	Time of lighting.		Time of extinguishing the light.		Length of time lighted.		Daily quantity of oil consumed in Light-house or Light-vessel lamps.				Number of chimneys broken each night.	Inches of new wick expended.	Quantity of oil set aside for land and house lamps.	REMARKS ON THE WEATHER. (Dry, damp, rainy, snowy, light wind, moderate breeze, fresh breeze, or gale, &c.)
	Hour.	Min.	Hour.	Min.	Hour.	Min.	Galls.	Qts.	Pints.	Gills.				
1	5	42	5	57	12	15	3		3/4					Damp fresh wind S
2	5	41	5	58	12	18	3		3/4					Rain " " "
3	5	39	5	59	12	20	3		1					" 1/2 gale "
4	5	37	6	0	12	25	3		1					" " " W
5	5	35	6	2	12	26	3		1					Damp light breeze "
6	5	33	6	4	12	28	3		1					Rain 1/2 gale S E x S
7	5	32	6	5	12	31	3		1 1/4					Damp - - S x W
8	5	30	6	6	12	34	3		1 1/4					" " " W x W
9	5	29	6	7	12	38	3		1 1/4					" steady breeze W x S
10	5	27	6	8	12	40	3		1 1/2					Dry - - S
11	5	25	6	9	12	43	3		1 1/2					Damp light " var
12	5	24	6	10	12	45	3		1 1/2					" " " S E
13	5	22	6	12	12	48	3		1 3/4					Hazy " " S
14	5	20	6	13	12	51	3		1 3/4	8 1/2				" " " var
15	5	19	6	14	12	54	3		2					" " " W
16	5	17	6	15	12	57	3		2					Rain steady - "
17	5	16	6	16	13	0	3		2					Snow rain fresh wind W W
18	5	14	6	17	13	2	3		2 1/4					Damp light " W
19	5	13	6	19	13	5	3		2 1/4					" fresh - S
20	5	11	6	20	13	7	3		2 1/4					Dry " " "
21	5	9	6	21	13	11	3		2 1/4					Damp steady " W W
22	5	8	6	22	13	13	3		2 1/4					Rain 1/2 gale " "
23	5	7	6	23	13	16	3		2 3/4					Damp fresh wind W W
24	5	6	6	24	13	18	3		2 3/4					" " " "
25	5	4	6	25	13	21	3		2 3/4					" " " "
26	5	2	6	26	13	24	3		3					" Steady breeze "
27	5	1	6	27	13	26	3		3					Dry " " "
28	5	0	6	28	13	29	3		3					" " " W W
29	4	58	6	30	13	31	3		3 1/4	8 1/2				" " " "
30	4	57	6	31	13	34	3		3 1/4					" " " S W
31	4	55	6	32	13	37	3		3 1/4					" Calm

25 0 1 2      16 2 5 3 0 1

	GALLONS.	QUARTS.	PINTS.
Total quantity consumed in the lamp of the Light-Houses	25	0	1 1/8
Total quantity consumed this month for use in the dwelling-house or quarters, and other hand lamps	5	3	1/2
Total quantity expended this month	30	3	1 3/8

Order of Lens  $4 + 5$  Kind of Light *9 R + 7 W*  
 Number of Wicks in burner *our* Diameter of outer burner  $1/2 + 1/8$

Written by me— *James Logan*

*James Logan* Light-Keeper.  
 Ass't Keeper.



ACCOUNT of Oil, Wicks, and Chimneys expended daily at *Cutrogon* Light House in the month of *Nov 1903*, 189 ,  
 and showing the time of lighting and extinguishing, and the length of time lighted each night.

DAY.	Time of lighting.		Time of extinguishing the light.		Length of time lighted.		Daily quantity of oil consumed in Light-house or Light-vessel lamps.				Number of chimneys broken each night.	Inches of new wick expended.	Quantity of oil set aside for hand and house lamps.	REMARKS ON THE WEATHER. (Dry, damp, rainy, snowy, light wind, moderate breeze, fresh breeze, or gale, &c.)	
	Hour.	Min.	Hour.	Min.	Hour.	Min.	Galls.	Qts.	Pints.	Gills.					
1	4	54	6	33	13	39		3		3 1/2				Hazy dry Calm	
2	4	53	6	34	13	41		3		3 1/2				" " "	
3	4	51	6	36	13	45		3		3 1/2				" " "	
4	4	50	6	37	13	47		3		3 1/2				" lt breeze W	
5	4	49	6	38	13	49		3		3 3/4				Snow fresh wind N-E	
6	4	48	6	39	13	51		3		3 3/4				Damp " " S	
7	4	46	6	41	13	54		3		3 3/4				" " " "	
8	4	46	6	42	13	57		3	1					Dry light breeze S x W	
9	4	45	6	43	13	59		3	1					Rain fresh wind N-E	
10	4	44	6	44	14	1		3	1					Damp light breeze Var	
11	4	43	6	45	14	4		3	1	1/4				" " " "	
12	4	42	6	47	14	6		3	1	1/4				Rain fresh wind N to N-E	
13	4	41	6	48	14	8		3	1	1/4				Damp " " N-W	
14	4	40	6	49	14	10		3	1	1/4				" " " N-E	
15	4	39	6	50	14	12		3	1	1/2				" Calm	
16	4	38	6	52	14	14		3	1	1/2				Snow very fresh wind N-W	
17	4	37	6	53	14	16		3	1	1/2				" " " " " "	
18	4	36	6	55	14	18		3	1	3/4				" " " " " N x S x W	
19	4	35	6	56	14	21		3	1	3/4				" " " " " S.W. + S	
20	4	34	6	57	14	23		3	1	3/4				" " " " " N.W	
21	4	34	6	58	14	24		3	1	3/4				" " " " " N.E	
22	4	33	7	0	14	26		3	1	1				Damp light " " Var	
23	4	32	7	1	14	28		3	1	1				Snow fresh " " N.E	
24	4	31	7	2	14	30		3	1	1				" light " " N to "	
25	4	32	7	3	14	32		3	1	1				" fresh " " S.W. + N.W	
26	4	33	7	4	14	33		3	1	1 1/4				" " " " " Var	
27	4	34	7	5	14	35		3	1	1 1/4				" " " " " S.W	
28	4	35	7	6	14	36		3	1	1 1/4				" " " " " S	
29	4	36	7	7	14	37		3	1	1 1/4				" " " " " N + N.W	
30	4	29	7	8	14	39		3	1	1 1/4				" " " " " S	
31															

26 2 1 1 16 2 53.1.0

	GALLONS.	QUARTS.	PINTS.
Total quantity consumed in the lamp of the Light-	26	2	1 1/4
Total quantity consumed this month for use in the dwelling-house or quarters, and other hand lamps	5	3	1
Total quantity expended this month	32	2	0 1/4

Order of Lens *4<sup>th</sup> 5<sup>th</sup>* Kind of Light *9 R + 7 W*  
 Number of Wicks in burner *cur* Diameter of outer burner *1/2 + 1/8*  
 Written by me— *Jas. Crogan*

*Jas. Crogan* Light-Keeper.  
 \_\_\_\_\_, Ass't Keeper.



ACCOUNT of Oil, Wicks, and Chimneys expended daily at *Autonagon* Light-House in the month of *Dec* 1903 189  
 and showing the time of lighting and extinguishing, and the length of time lighted each night.

DAY.	Time of lighting.		Time of extinguishing the light.		Length of time lighted.		Daily quantity of oil consumed in Light-house or Light-vessel lamps.				Number of chimneys broken each night.	Inches of new wick expended.	Quantity of oil set aside for hand and house lamps.	REMARKS ON THE WEATHER. (Dry, damp, rainy, snowy, light wind, moderate breeze, fresh breeze, or gale, &c.)
	Hour.	Min.	Hour.	Min.	Hour.	Min.	Galls.	Qts.	Pints.	Gills.				
1	4	29	7	9	14	41	3	1	1/2					Snow light wind S & SW
2	4	29	7	10	14	42	3	1	1/2					Damp " " var
3	4	29	7	11	14	42	3	1	1/2					Snow " " "
4	4	29	7	12	14	45	3	1	1/2					" 1/2 gale N.E.
5	4	28	7	14	14	46	3	1	1/2	1				" light wind var
6	4	28	7	14	14	47	3	1	1/2					Damp " " S.W.
7														
8														
9														
10														
11														
12														
13														
14														
15														
16														
17														
18														
19														
20														
21														
22														
23														
24														
25														
26														
27														
28														
29														
30														
31														

5 2 0 1      5 3 2 0

	GALLONS.	QUARTS.	PINTS.
Total quantity consumed in the lamp of the Light-House <i>Houses</i>	5	2	1/4
Total quantity consumed this month for use in the dwelling-house or quarters, and other hand lamps	5	3	2
Total quantity expended this month	11	1	2 1/4

Order of Lens *5 & 6* Kind of Light *F.R. & F.W.*  
 Number of Wicks in burner *one* Diameter of outer burner *1 1/2 + 1 1/8*  
 Written by me— *Jas Logan*  
*Keeper*

*Jas Logan*, Light-Keeper.  
 \_\_\_\_\_, Ass't Keeper.



ACCOUNT of Oil, Wicks, and Chimneys expended daily at *Autonagon*

Light *Houses*, in the month of *April 1904*, 189

and showing the time of lighting and extinguishing, and the length of time lighted each night.

DAY.	Time of lighting.		Time of extinguishing the light.		Length of time lighted.		Daily quantity of oil consumed in Light-house or Light-vessel lamps.				Number of chimneys broken each night.	Inches of new wick expended.	Quantity of oil set aside for hand and house lamps.	REMARKS ON THE WEATHER. (Dry, damp, rainy, snowy, light wind, moderate breeze, fresh breeze, or gale, &c.)	
	Hour.	Min.	Hour.	Min.	Hour.	Min.	Galls.	Qts.	Pints.	Gills.					
1															Damp light house N.E
2															" " " " Var
3															
4															
5															
6															
7															
8															
9															
10															
11															
12															
13															
14															
15															
16															
17															
18															
19															
20															
21															
22															
23															
24															
25															
26	6	53	5	3	10	11	2	1	1 1/4			<i>in on</i>	8 1/2	Damp light house N.E	
27	6	54	5	1	10	8	2	1	1						" " " " Var
28	6	55	5	0	10	4	2	1	1						Dry - - -
29	6	56	4	59	10	1	2	1	1						Damp " " " N.E
30	6	57	4	57	9	59	2	1	1						" " " " H
31															

3 1 0 1 1/4 8 1/2 5 2 0 0

	GALLONS.	QUARTS.	PINTS.
Total quantity consumed in the lamp of the Light <i>Houses</i>	3	1	5/6
Total quantity consumed this month for use in the dwelling-house or quarters, and other hand lamps	5	2	0
Total quantity expended this month	8	3	0 5/6

Order of Lens *4 + 5* Kind of Light *9R + 2R*  
 Number of Wicks in burner *One* Diameter of outer burner *1/2 + 1/8*  
 Written by me— *Jas Longan*  
*Keeper*

*Jas Longan* Light-Keeper.  
 Ass't Keeper.



ACCOUNT of Oil, Wicks, and Chimneys expended daily at *Cantonagon*

Light-Houses, in the month of *May 1904*

and showing the time of lighting and extinguishing, and the length of time lighted each night.

DAY.	Time of lighting.		Time of extinguishing the light.		Length of time lighted.		Daily quantity of oil consumed in Light-house or Light-vessel lamps.				Number of chimneys broken each night.	Inches of new wick expended.	Quantity of oil set aside for hand and house lamps.	REMARKS ON THE WEATHER. (Dry, damp, rainy, snowy, light wind, moderate breeze, fresh breeze, or gale, &c.)
	Hour.	Min.	Hour.	Min.	Hour.	Min.	Galls.	Qts.	Pints.	Gills.				
1	6	0	4	55	9	56	2	1	3/4				Damp Calm	
2	7	1	4	54	9	53	2	1	3/4				Dry light breeze var	
3	7	2	4	53	9	51	2	1	3/4				" " "	
4	7	3	4	51	9	49	2	1	1/2				Damp " " "	
5	7	4	4	50	9	47	2	1	1/2				Dry " " N.E	
6	7	5	4	49	9	44	2	1	1/2				Rain " " var	
7	7	6	4	48	9	42	2	1	1/2				" " " "	
8	7	7	4	46	9	40	2	1	1/4				" Calm	
9	7	9	4	45	9	38	2	1	1/4				Damp light breeze var	
10	7	10	4	44	9	35	2	1	1/4				" " " N.E	
11	7	11	4	43	9	33	2	1			8 1/2		Rain fresh " S.E	
12	7	12	4	42	9	31	2	1					" light " var	
13	7	13	4	41	9	29	2	1					" fresh " N.W	
14	7	14	4	40	9	27	2		3/4				Snow light " N	
15	7	15	4	39	9	25	2		3/4				" " " " x N	
16	7	16	4	38	9	21	2		3/4				Damp " " N	
17	7	17	4	37	9	19	2		3/4				Rain. fog " " E	
18	7	18	4	36	9	17	2		3/4				Fog " " var	
19	7	19	4	35	9	15	2		3/4				Damp " " "	
20	7	20	4	34	9	13	2		3/4				Dry " " N	
21	7	21	4	33	9	12	2		3/4				Damp " " var	
22	7	22	4	32	9	11	2		3/4				Rain. fog " " "	
23	7	23	4	31	9	9	2		3/4				Damp " " N	
24	7	23	4	31	9	8	2		3/4				" " " var	
25	7	24	4	30	9	6	2		3/4	8 1/2			Rain " " "	
26	7	25	4	30	9	4	2		3/4				Damp " " "	
27	7	26	4	29	9	3	2		3/4				" " " "	
28	7	27	4	28	9	1	2		3				Rain " " "	
29	7	27	4	27	9	0	2		3				Damp steady " S.N	
30	7	28	4	27	8	59	2		3				" fresh " N.E	
31	7	29	4	26	8	57	2		3				Dry light " var	

19 0 1 1/4 16 1/2 51 0 0

	GALLONS.	QUARTS.	PINTS.
Total quantity consumed in the lamp of the Light-Houses	19	0	1 7/16
Total quantity consumed this month for use in the dwelling-house or quarters, and other hand lamps	5	1	0
Total quantity expended this month	24	1	1 7/16

Order of Lens *4" x 5"* Kind of Light *9 R + 9 N*  
 Number of Wicks in burner *One* Diameter of outer burner *1 1/2" + 1 1/8"*

Written by me—  
*Justorgan*  
 Keeper

*Gas Organ* Light-Keeper.  
 Ass't Keeper.



ACCOUNT of Oil, Wicks, and Chimneys expended daily at *Outonagon*

Light-houses, in the month of *June 1904*

and showing the time of lighting and extinguishing, and the length of time lighted each night.

DAY.	Time of lighting.		Time of extinguishing the light.		Length of time lighted.		Daily quantity of oil consumed in Light-house or Light-vessel lamps.				Number of chimneys broken each night.	Inches of new wick expended.	Quantity of oil set aside for hand and house lamps.	REMARKS ON THE WEATHER. (Dry, damp, rainy, snow, light wind, moderate breeze, fresh breeze, or gale, &c.)
	Hour.	Min.	Hour.	Min.	Hour.	Min.	Galls.	Qts.	Pints.	Gills.				
1	7	29	4	26	8	55	2			3				Damp light breeze var
2	7	30	4	25	8	55	2			3				" fresh " N.E
3	7	31	4	25	8	54	2			3				Rain fog " " "
4	7	32	4	24	8	52	2			2 3/4				" " " var
5	7	32	4	24	8	52	2			2 3/4				" " light " "
6	7	33	4	24	8	51	2			2 3/4				" " " " "
7	7	34	4	24	8	50	2			2 3/4				" " " " S.W
8	7	34	4	23	8	49	2			2 3/4		had on		Damp steady breeze N.E
9	7	35	4	25	8	48	2			2 3/4		8 1/2		" light " var
10	7	36	4	25	8	47	2			2 3/4				Dry steady " N.E
11	7	36	4	25	8	46	2			2 3/4				" light " " "
12	7	37	4	25	8	45	2			2 1/2				" " " var
13	7	38	4	25	8	44	2			2 1/2				" " " "
14	7	38	4	25	8	44	2			2 1/2				" " " "
15	7	38	4	25	8	44	2			2 1/2				" " " "
16	7	38	4	25	8	44	2			2 1/2				Rain " " "
17	7	38	4	25	8	43	2			2 1/2				" " " "
18	7	39	4	25	8	43	2			2 1/2				" " " "
19	7	39	4	25	8	43	2			2 1/2				Damp " " "
20	7	40	4	25	8	43	2			2 1/2				Rain fog " " W
21	7	40	4	25	8	43	2			2 1/2				Fog light wine var
22	7	40	4	25	8	43	2			2 1/2				Dry " breeze "
23	7	40	4	25	8	43	2			2 1/2		8 1/2		Rain fog fresh wine S.W
24	7	40	4	25	8	43	2			2 1/2				" " Calm
25	7	40	4	25	8	43	2			2 1/2				" " light breeze W
26	7	40	4	25	8	43	2			2 1/2				Damp " fresh wine N.W. W
27	7	40	4	25	8	43	2			2 1/2				" " light breeze var
28	7	40	4	26	8	46	2			2 1/2				Dry " " "
29	7	40	4	26	8	46	2			2 1/2				" " " "
30	7	40	4	27	8	49	2			2 1/2				Damp " " "
31														

17 1 1 2/2

	GALLONS.	QUARTS.	PINTS.
Total quantity consumed in the lamp of the Light-Houses	17	1	1 9/16
Total quantity consumed this month for use in the dwelling-house or quarters, and other hand lamps	5		
Total quantity expended this month	22	1	1 9/16

Order of Lens *4 + 5* Kind of Light *FR 7 1/4*  
 Number of Wicks in burner *One* Diameter of outer burner *1 1/2 + 1 1/8*  
 Written by me— *J. S. Logan*

*J. S. Logan*, Light-Keeper.  
 \_\_\_\_\_, Ass't Keeper.



ACCOUNT of Oil, Wicks, and Chimneys expended daily at *Autonagon* Light-house, in the month of *July 1904* ~~189~~, and showing the time of lighting and extinguishing, and the length of time lighted each night.

DAY.	Time of lighting.		Time of extinguishing the light.		Length of time lighted.		Daily quantity of oil consumed in Light-house or Light-vessel lamps.				Number of chimneys broken each night.	Inches of new wick expended.	Quantity of oil set aside for hand and house lamps.	REMARKS ON THE WEATHER. (Dry, damp, rainy, snowy, light wind, moderate breeze, fresh breeze, or gale, &c.)
	Hour.	Min.	Hour.	Min.	Hour.	Min.	Galls.	Qts.	Pints.	Gills.				
1	7	40	4	27	8	46	2		2 1/2					Damp light brass bar
2	7	40	4	27	8	46	2		2 1/2					Dry " " S
3	7	40	4	28	8	47	2		2 1/2					Rain steady " SW
4	7	40	4	26	8	48	2		2 1/2					Damp light " var
5	7	39	4	29	8	50	2		2 1/2					" " " "
6	7	39	4	30	8	50	2		2 1/2					" " " N.E
7	7	39	4	30	8	51	2		2 1/2	8 1/2				" " " var
8	7	38	4	31	8	52	2		2 1/2					Rain " " "
9	7	38	4	32	8	53	2		2 1/2					Damp " " "
10	7	37	4	33	8	54	2		2 1/2					Dry Calm
11	7	37	4	32	8	55	2		2 3/4					Rain light " "
12	7	37	4	34	8	56	2		2 3/4					Dry " " "
13	7	36	4	35	8	58	2		2 3/4					Rain " " W
14	7	35	4	36	8	59	2		2 3/4					" fresh " S
15	7	35	4	37	9	1	2		3					Dry light " "
16	7	34	4	37	9	3	2		3					Rain very fresh wind SW W
17	7	33	4	38	9	5	2		3					Dry " brass W
18	7	33	4	39	9	5	2		3					Rain " " "
19	7	32	4	40	9	7	2		3 1/4					Dry light " S
20	7	31	4	41	9	9	2		3 1/4					Rainsquall " SW
21	7	31	4	41	9	11	2		3 1/4					Dry light brass var
22	7	30	4	42	9	12	2		3 1/4	8 1/2				Dry " " W
23	7	29	4	43	9	14	2		3 1/2					" " " var
24	7	28	4	44	9	16	2		3 1/2					Dry " " N.E
25	7	27	4	45	9	18	2		3 1/2					" " " S.E
26	7	26	4	46	9	20	2		3 3/4					" Calm
27	7	25	4	47	9	22	2		3 3/4					Dry light brass var
28	7	24	4	48	9	24	2		3 3/4					" " " "
29	7	23	4	49	9	26	2		3 3/4					Rain Calm
30	7	22	4	50	9	28	2		1					Damp steady brass SW
31	7	21	4	51	9	30	2		1					Dry fresh wind W

18 1 1 2 1/2 5.1.0.0

	GALLONS.	QUARTS.	PINTS.
Total quantity consumed in the lamp of the Light-house	18	1	1 1/2
Total quantity consumed this month for use in the dwelling-house or quarters, and other hand lamps	5	1	
Total quantity expended this month	23	2	1 1/2

Order of Lens *4 + 5* Kind of Light *PR + F. W*  
 Number of Wicks in burner *one* Diameter of outer burner *1 1/2*  
 Written by me— *Asst Keeper*

*Asst Keeper*  
 Light-keeper.  
 Ass't Keeper.



ACCOUNT of Oil, Wicks, and Chimneys expended daily at *Cutoragon* Light-Houses, in the month of *August*, 1904  
and showing the time of lighting and extinguishing, and the length of time lighted each night.

DAY.	Time of lighting.		Time of extinguishing the light.		Length of time lighted.		Daily quantity of oil consumed in Light-house or Light-vessel lamps.				Number of chimneys broken each night.	Inches of new wick expended.	Quantity of oil set aside for hand and house lamps.	REMARKS ON THE WEATHER. (Dry, damp, rainy, snowy, light wind, moderate breeze, fresh breeze, or gale, &c.)
	Hour.	Min.	Hour.	Min.	Hour.	Min.	Galls.	Qts.	Pints.	Gills.				
1	7	20	4	52	9	32	2	1						Dry light breeze bar
2	7	19	4	53	9	35	2	1	1/4					" " " "
3	7	18	4	54	9	37	2	1	1/4					" fresh " "
4	7	17	4	55	9	39	2	1	1/4					Rain " " "
5	7	16	4	56	9	41	2	1	1/4					Dry light " vari
6	7	14	4	57	9	43	2	1	1/4			1 on 8 1/2		" " " "
7	7	13	4	58	9	46	2	1	1/2					" " " N.E.
8	7	12	4	59	9	48	2	1	1/2					" " " vari
9	7	11	5	0	9	50	2	1	1/2					Rain " " "
10	7	10	5	2	9	53	2	1	3/4					Dry " " "
11	7	8	5	3	9	55	2	1	3/4					Rain fresh - S.W.
12	7	6	5	4	9	57	2	1	3/4					" " " "
13	7	4	5	5	10	0	2	1	3/4					Dry steady - "
14	7	3	5	6	10	2	2	1	1					" fresh - "
15	7	2	5	7	10	5	3	1	1					" steady - N.E. x N
16	7	0	5	8	10	7	2	1	1					" Calm
17	6	54	5	9	10	10	2	1	1 1/4					" " "
18	6	57	5	10	10	13	2	1	1 1/4					" Light breeze E x N
19	6	56	5	11	10	16	2	1	1 1/4					" " vari
20	6	55	5	12	10	18	2	1	1 1/2			1 on 5 1/2		" steady " "
21	6	53	5	11	10	21	2	1	1 1/2					Rain light - S.E. x N
22	6	57	5	12	10	23	2	1	1 1/2					Damp fresh wind N.W. x N
23	6	49	5	13	10	26	2	1	1 1/2					Dry light breeze N
24	6	48	5	14	10	28	2	1	1 3/4					" 1/2 gale N x N
25	6	46	5	15	10	31	2	1	1 3/4					" light breeze S.W.
26	6	40	5	17	10	34	2	1	1 3/4					" " " vari
27	6	43	5	18	10	36	2	1	2					" fresh - N
28	6	41	5	19	10	39	2	1	2					" Calm
29	6	40	5	20	10	42	2	1	2					" light breeze vari
30	6	38	5	21	10	44	2	1	2 1/4					Rain - - -
31	6	36	5	22	10	47	2	1	2 1/4					" - - -

20 1 1 1/4

	GALLONS.	QUARTS.	PINTS.
Total quantity consumed in the lamp of the Light-	20	1	1 1/4
Total quantity consumed this month for use in the dwelling-house or quarters, and other hand lamps			
Total quantity expended this month			

Order of Lens *4 + 5* Kind of Light *GR & 9 N*  
 Number of Wicks in burner *one* Diameter of outer burner *1 1/2 x 1 1/8*  
 Written by me— *Jas. Oragan*  
*Kerpen*

*Jas. Oragan*, Light-Keeper.  
 \_\_\_\_\_, Ass't Keeper.



ACCOUNT of Oil, Wicks, and Chimneys expended daily at *Cutoragon*

Light-Houses, in the month of *Sept 1904*

and showing the time of lighting and extinguishing, and the length of time lighted each night.

DAY.	Time of lighting.		Time of extinguishing the light.		Length of time lighted.		Daily quantity of oil consumed in Light-house or Light-vessel lamps.				Number of chimneys broken each night.	Inches of new wick expended.	Quantity of oil set aside for hand and house lamps.	REMARKS ON THE WEATHER. (Dry, damp, rainy, snowy, light wind, moderate breeze, fresh breeze, or gale, &c.)	
	Hour.	Min.	Hour.	Min.	Hour.	Min.	Galls.	Qts.	Pints.	Gills.					
1	6	34	5	25	10	50	2	1	2 1/4					Rain light breeze var	
2	6	33	5	26	10	53	2	1	2 1/2					" fresh wind It	
3	6	31	5	27	10	53	2	1	2 1/2					Damp light - var	
4	6	30	5	28	10	59	2	1	2 1/2					" " " E	
5	6	29	5	29	11	1	2	1	2 1/2					Rain " " "	
6	6	27	5	30	11	4	2	1	2 1/2					" " " var	
7	6	25	5	31	11	7	2	1	2 1/2					Dry " " S W	
8	6	23	5	32	11	10	2	1	2 1/2	8 1/2				" " breeze var	
9	6	21	5	33	11	12	2	1	3					" steady " SE	
10	6	19	5	34	11	15	2	1	3					" light " SW	
11	6	18	5	35	11	18	2	1	3					" Hazy steady - It	
12	6	16	5	36	11	21	2	1	3 1/4					Rain fresh " "	
13	6	14	5	37	11	23	2	1	3 1/4					" " " S	
14	6	12	5	38	11	26	2	1	3 1/4					" " " SW	
15	6	10	5	40	11	30	2	1	3 1/4					Damp " " It	
16	6	9	5	41	11	32	2	1	3 1/2					" " " "	
17	6	7	5	42	11	35	2	1	3 1/2					Dry fresh " S. W	
18	6	6	5	43	11	37	2	1	3 1/2					Damp Calm	
19	6	5	5	44	11	39	2	1	3 1/2					" fresh wind N. W	
20	6	3	5	45	11	42	2	1	3 1/2					" " " N. E	
21	6	0	5	46	11	45	2	1	3 1/2					Dry light breeze var	
22	5	58	5	47	11	49	2	1	3 3/4					Rain " " "	
23	5	57	5	48	11	52	3	0	0	8 1/2				" " " S	
24	5	55	5	49	11	55	3	0	0					" Fog " N. E	
25	5	53	5	50	11	57	3	0	0					Damp light breeze var	
26	5	51	5	52	12	0	3		1/4					Dry " " "	
27	5	50	5	54	12	3	3		1/4					Damp - - N. E	
28	5	48	5	55	12	6	3		1/4					Rain fog - - S x W	
29	5	46	5	56	12	8	3		1/2					Damp fresh - N x W	
30	5	44	5	57	12	12	3		1/2					Dry " " N x W	
31															

21 3 1 1/2 16 2 5 3.1.0

	GALLONS.	QUARTS.	PINTS.
Total quantity consumed in the lamp of the Light-Houses	21	3	1 3/4
Total quantity consumed this month for use in the dwelling-house or quarters, and other hand lamps	5	3	1
Total quantity expended this month	27	3	3/8

Order of Lens *4" + 5"* Kind of Light *2 R + 2 It*  
 Number of Wicks in burner *One* Diameter of outer burner *1 1/2 + 1 1/8 inches*

Written by me—

*J. C. Logan*  
*Keeper*

*J. C. Logan*, Light-Keeper.  
 Ass't Keeper.



ACCOUNT of Oil, Wicks, and Chimneys expended daily at *Autonagon* Light-house, in the month of *Octr 1904*, and showing the time of lighting and extinguishing, and the length of time lighted each night.

DAY.	Time of lighting.		Time of extinguishing the light.		Length of time lighted.		Daily quantity of oil consumed in Light-house or Light-vessel lamps.				Number of chimneys broken each night.	Inches of new wick expended.	Quantity of oil set aside for hand and house lamps.	REMARKS ON THE WEATHER. (Dry, damp, rainy, snowy, light wind, moderate breeze, fresh breeze, or gale, &c.)
	Hour.	Min.	Hour.	Min.	Hour.	Min.	Galls.	Qts.	Pints.	Gills.				
1	5	42	5	57	12	15	3				1/2			Damp light breeze W
2	5	41	5	55	12	18	3				3/4			" " " var
3	5	39	5	59	12	20	3				3/4			Dry fresh " N.E
4	5	37	5	0	12	23	3				3/4			" steady " var
5	5	35	5	1	12	26	3				3/4			Damp fresh " N.E x W
6	5	33	5	3	12	29	3				1			Dry " wind S.E x S
7	5	32	5	4	12	31	3				1	do on 8 1/2		Rain " " " " " "
8	5	30	6	5	12	34	3				1			Damp fresh " E
9	5	29	6	6	12	38	3				1 1/4			Rain very " S
10	5	27	6	7	12	40	3				1 1/4			" " " N + N.W
11	5	25	6	8	12	43	3				1 1/4			" " " N + N.E
12	5	24	6	9	12	45	3				1 1/2			Dry light breeze var
13	5	22	6	10	12	48	3				1 1/2			Rain fresh wind + snow N.E
14	5	20	6	12	12	51	3				1 1/2			Damp " " S
15	5	19	6	13	12	54	3				1 3/4			" " " W
16	5	17	6	14	12	57	3				1 3/4			Rain " " " "
17	5	16	6	15	13	0	3				1 3/4			Damp very " W
18	5	14	6	16	13	2	3				2			" wind light + variable
19	5	13	6	17	13	5	3				2			Rain fresh wind N.E
20	5	11	6	19	13	7	3				2			" " " " "
21	5	9	6	20	13	11	3				2 1/4	8 1/2		" " " " "
22	5	8	6	21	13	13	3				2 1/4			" 1/2 gale N + N.W
23	5	7	6	22	13	16	3				2 1/4			Damp light wind var
24	5	6	6	23	13	18	3				2 1/2			Rain + snow 1/2 gale N.E
25	5	4	6	25	13	21	3				2 1/2			Snow fresh wind N
26	5	2	6	26	13	24	3				2 3/4			Damp " " var
27	5	1	6	27	13	26	3				2 3/4			" " " N.W
28	5	0	6	28	13	29	3				2 3/4			" 1/2 gale N.E
29	4	58	6	30	13	31	3				3			" fresh wind S + S.W
30	4	57	6	31	13	34	3				3			Dry light " S.W x W
31	4	55	6	32	13	37	3				3			" " " N.E

24 5 1 3 16 1/6 5.3.1 0

	GALLONS.	QUARTS.	PINTS.
Total quantity consumed in the lamp of the Light-Houses	24	3	1 3/4
Total quantity consumed this month for use in the dwelling-house or quarters, and other hand lamps	5	3	1
Total quantity expended this month	30	3	3/4

Order of Lens *4 + 5<sup>th</sup>* Kind of Light *7 R + 7 W*  
 Number of Wicks in burner *one* Diameter of outer burner *1 1/2 + 1 1/8*  
 Written by me— *John Morgan*  
*Keeper*

*John Morgan*, Light-Keeper.  
 Ass't Keeper.



ACCOUNT of Oil, Wicks, and Chimneys expended daily at *Cutwagon* Light-Houses, in the month of *Novr 1904*, and showing the time of lighting and extinguishing, and the length of time lighted each night.

DAY.	Time of lighting.		Time of extinguishing the light.		Length of time lighted.		Daily quantity of oil consumed in Light-house or Light-vessel lamps.				Number of chimneys broken each night.	Inches of new wick expended.	Quantity of oil set aside for hand and house lamps.	REMARKS ON THE WEATHER. (Dry, damp, rainy, snowy, light wind, moderate breeze, fresh breeze, or gale, &c.)	
	Hour.	Min.	Hour.	Min.	Hour.	Min.	Galls.	Qts.	Pints.	Gills.					
1	4	54	7	9	13	39	3			3/4				Damp steady breeze N.E.	
2	4	53	7	10	13	41	3			3/4				Dry Calm	
3	4	51	7	11	13	45	3			3/4				" Hazy "	
4	4	50	7	12	13	47	3			3/4				Damp light wind N.E.	
5	4	49	7	38	13	49	3			3/4		8 1/2		Snow fresh - - -	
6	4	48	7	39	13	57	3			3/4				Dry Calm	
7	4	47	7	41	13	54	3			3/4				Damp light breeze N.E.	
8	4	46	6	42	13	57	3			3/4				Snow fresh - - -	
9	4	45	6	43	13	59	3			3/4				Damp 1/2 gale N.E.	
10	4	44	6	44	14	1	3			3/4				" light breeze N x E	
11	4	43	6	45	14	4	3			3/4				" fresh wind S.W.	
12	4	42	6	47	14	6	3	1						" 1/2 gale " "	
13	4	41	6	48	14	8	3	1						" " " N x W	
14	4	40	6	49	14	10	3	1	1/4					" Calm	
15	4	39	6	50	14	12	3	1	1/4					Dry -	
16	4	38	6	52	14	14	3	1	1/4					" -	
17	4	37	6	53	14	16	3	1	1/4					" -	
18	4	36	6	55	14	18	3	1	1/2					" -	
19	4	35	6	56	14	21	3	1	1/2			8 1/2		Damp fresh wind W	
20	4	34	6	57	14	23	3	1	1/2					" " " S "	
21	4	34	6	58	14	24	3	1	3/4					" light " W	
22	4	33	7	0	14	26	3	1	3/4					" fresh " "	
23	4	32	7	1	14	28	3	1	3/4					" light " base	
24	4	31	7	2	14	30	3	1	3/4					Snow " " N	
25	4	31	7	3	14	32	3	1	1					Damp steady breeze N x W	
26	4	31	7	4	14	33	3	1	1					Snow fresh wind N x W	
27	4	31	7	5	14	35	3	1	1					" " " N. N. W	
28	4	30	7	6	14	36	3	1	1					" " " S. N. W	
29	4	30	7	7	14	37	3	1	1/4					" " " N. N. W	
30	4	29	7	8	14	39	3	1	1/4					" " " S W	
31															

26 1 1 2 1/4 16 1/6 5.3.1.1

	GALLONS.	QUARTS.	PINTS.
Total quantity consumed in the lamp of the Light-Houses	26	1	1 1/16
Total quantity consumed this month for use in the dwelling-house or quarters, and other hand lamps	5	3	1 1/4
Total quantity expended this month	31	1	13/16

Order of Lens *4<sup>th</sup> & 5<sup>th</sup>* Kind of Light *F.R. 7<sup>th</sup> W*  
 Number of Wicks in burner *one* Diameter of outer burner *1 1/2 x 1 1/8*  
 Written by me— *J. S. Morgan*  
*J. S. Morgan*  
 Keeper

*J. S. Morgan* Light-Keeper.  
 Ass't Keeper.



ACCOUNT of Oil, Wicks, and Chimneys expended daily at *Cutwagon* Light-House, in the month of *Dec* 1904, and showing the time of lighting and extinguishing, and the length of time lighted each night.

DAY.	Time of lighting.		Time of extinguishing the light.		Length of time lighted.		Daily quantity of oil consumed in Light-house or Light-vessel lamps.				Number of chimneys broken each night.	Inches of new wick expended.	Quantity of oil set aside for hand and house lamps.	REMARKS ON THE WEATHER. (Dry, damp, rainy, snowy, light wind, moderate breeze, fresh breeze, or gale, &c.)
	Hour.	Min.	Hour.	Min.	Hour.	Min.	Galls.	Qts.	Pints.	Gills.				
1	4	29	7	9	14	41	3	1	1/4				Snow fresh wind S W	
2	4	29	7	10	14	42	3	1	1/4				" " " " Var	
3	4	29	7	11	14	42	3	1	1/4				" light " "	
4	4	29	7	12	14	45	3	1	1/4		From Dec 8 1/2		Damp " breeze S	
5	4	28	7	14	14	46	3	1	1/4				Snow fresh wind W	
6	4	28	7	14	14	47	3	1	1/4				" " " " x N	
7	4	28	7	15	14	48	3	1	1/4				Damp " " " " NE	
8	4	28	7	16	14	49	3	1	1/4				Snow light " " Var	
9	4	28	7	17	14	49	3	1	1/4				" " " " "	
10	4	28	7	18	14	50	3	1	1/4				" " " " "	
11	4	28	7	19	14	51	3	1	1/4				" " " " E	
12	4	28	7	20	14	52	3	1	1/4				" fresh " " S	
13	4	28	7	21	14	53	3	1	1/4				" " " " S x W	
14	4	28	7	21	14	54	3	1	1/4				Damp light " " S	
15														
16														
17														
18														
19														
20														
21														
22														
23														
24														
25														
26														
27														
28														
29														
30														
31														

12 3 0 3/4 8 1/2

	GALLONS.	QUARTS.	PINTS.
Total quantity consumed in the lamp of the Light-Houses	12	3	7/8
Total quantity consumed this month for use in the dwelling-house or quarters, and other hand lamps			
Total quantity expended this month			

Order of Lens  $4 + 5^{\pi}$  Kind of Light  $C + R + 9^{\pi}$   
 Number of Wicks in burner *one* Diameter of outer burner  $1/2 + 1/8$  inches  
 Written by me— *Jas Morgan*

*Jas Morgan*, Light-Keeper.  
 Ass't Keeper.



ACCOUNT of Oil, Wicks, and Chimneys expended daily *At Antigonon* Light *Houses* in the month of *April*, 189*2*  
 and showing the time of lighting and extinguishing, and the length of time lighted each night.

DAY.	Time of lighting.		Time of extinguishing the light.		Length of time lighted.		Daily quantity of oil consumed in Light-house or Light-vessel lamps.			Number of chimneys broken each night.	Inches of new wick expended.	Quantity of oil set aside for hand and house lamps.	REMARKS ON THE WEATHER. (Dry, damp, rainy, snowy, light wind, moderate breeze, fresh breeze, or gale, &c.)
	Hour.	Min.	Hour.	Min.	Hour.	Min.	Galls.	Qts.	Pints.				
1													
2													
3													
4													
5													
6													
7													
8													
9	6	34	5	29	10	56	2	1	2 1/2		8 on 7/2		Rain light breeze bar
10	6	35	5	28	10	52	2	1	2 1/2				Snow - - N.E.
11	6	36	5	26	10	49	2	1	2 1/4				Damp " " bar
12	6	37	5	25	10	47	2	1	2 1/4				Snow " " N
13	6	38	5	23	10	44	2	1	2 1/4				" " - N.W.
14	6	40	5	21	10	41	2	1	2				" " - N
15	6	41	5	19	10	39	2	1	2				" " - N.W.
16	6	42	5	17	10	36	2	1	2				Damp frost - N.E.
17	6	43	5	16	10	33	2	1	1 3/4				Snow " " -
18	6	44	5	15	10	31	2	1	1 3/4				Damp light - N.W.
19	6	45	5	13	10	28	2	1	1 1/2				" frost - N.E.
20	6	46	5	11	10	26	2	1	1 1/2				" light - bar
21	6	47	5	9	10	23	2	1	1 1/2				- - - -
22	6	49	5	8	10	21	2	1	1 1/4				- - - -
23	6	50	5	7	10	18	2	1	1 1/4		8 1/2		Dry " " - S.W. + N
24	6	51	5	5	10	16	2	1	1 1/4				Damp " " - bar
25	6	52	5	4	10	13	2	1	1				" " -
26	6	53	5	2	10	11	2	1	1				" " - N.E.
27	6	54	5	1	10	8	2	1	1				" " - bar
28	6	55	5	0	10	4	2	1	1				Rain " " - N
29	6	56	4	59	10	1	2	1	3/4				Snow " " - N.E.
30	30	57	4	57	9	59	2	1	3/4				Damp " " - bar
31													

14 3 0 3

	GALLONS.	QUARTS.	PINTS.
Total quantity consumed in the lamp of the Light <i>Houses</i> -----	14	3	0 3/4
Total quantity consumed this month for use in the dwelling-house or quarters, and other hand lamps -----	5	2	0
Total quantity expended this month -----	20	1	0 3/4

{ Order of Lens *4 + 5* Kind of Light *7 R, 7 H*  
 { Number of Wicks in burner *2* Diameter of outer burner *1 1/2 + 1 1/8*  
 Written by me— *J. S. Morgan*

*J. S. Morgan*, Light-Keeper.  
 \_\_\_\_\_, Ass't Keeper.



ACCOUNT of Oil, Wicks, and Chimneys expended daily at *Autragon*

Light-Houses, in the month of *May* 1905, ~~189~~

and showing the time of lighting and extinguishing, and the length of time lighted each night.

DAY.	Time of lighting.		Time of extinguishing the light.		Length of time lighted.		Daily quantity of oil consumed in Light-house or Light-vessel lamps.				Number of chimneys broken each night.	Inches of new wick expended.	Quantity of oil set aside for hand and house lamps.	REMARKS ON THE WEATHER. (Dry, damp, rainy, snowy, light wind, moderate breeze, fresh breeze, or gale, &c.)
	Hour.	Min.	Hour.	Min.	Hour.	Min.	Galls.	Qts.	Pints.	Gills.				
1	6	59	4	55	9	56	2	1	3/4					Damp light wind N.E
2	7	0	4	54	9	53	2	1	1/2					" fresh - " Var
3	7	1	4	53	9	57	2	1	1/2					Rain - - - - -
4	7	2	4	51	9	49	2	1	1/2					" " " " S.W
5	7	3	4	50	9	47	2	1	1/4					Damp " " " N.E
6	7	4	4	49	9	44	2	1	1/4		1 1/2			Rain light " " -
7	7	5	4	48	9	42	2	1	1/4					" fresh " " -
8	7	6	4	46	9	40	2	1	1/4					" light " " Var
9	7	7	4	45	9	38	2	1						Damp fresh " " N.E x E
10	7	9	4	44	9	35	2	1						Rain " " " S.E
11	7	10	4	43	9	33	2	1						Damp " " " W
12	7	11	4	41	9	31	2		3 3/4					" " " " S. & W
13	7	12	4	42	9	29	2		3 1/2					" light " " Var
14	7	13	4	40	9	27	2		3 1/4					Rain fresh " " N.E
15	7	14	4	39	9	25	2		3 3/4					Damp " " " W
16	7	15	4	38	9	23	2		3 1/2					Fog " " " N.E
17	7	16	4	37	9	21	2		3 1/2					Rain light " " Var
18	7	17	4	36	9	19	2		3 1/2					Damp " " " "
19	7	19	4	35	9	17	2		3 1/2					Dry " " " N.E
20	7	18	4	34	9	15	2		3 1/2		8 1/2			Damp fresh " " -
21	7	20	4	33	9	13	2		3 1/4					" steady " " -
22	7	21	4	32	9	11	2		3 1/4					" " " " "
23	7	22	4	31	9	9	2		3					Dry light " " N
24	7	23	4	31	9	8	2		3					Rain fresh " " W
25	7	23	4	30	9	6	2		3					" light " " N.E
26	7	24	4	30	9	4	2		3 1/4					Dry " " " W
27	7	25	4	29	9	3	2		2 3/4					" " " " Var
28	7	26	4	28	9	1	2		2 3/4					Smoky " " " -
29	7	27	4	27	9	0	2		2 3/4					" " " " "
30	7	28	4	27	8	59	2		2 3/4					Dry fresh " " N.E
31	7	29	4	26	8	57	2		2 3/4					" " " " W

18 3 1 3/4 16 1/2 5, 1, 0, 0

	GALLONS.	QUARTS.	PINTS.
Total quantity consumed in the lamp of the Light-Houses	18	3	1 1/4
Total quantity consumed this month for use in the dwelling-house or quarters, and other hand lamps	5	1	
Total quantity expended this month	24	0	1 3/4

Order of Lens *4 + 5*<sup>th</sup> Kind of Light *IR + IW*  
 Number of Wicks in burner *One* Diameter of outer burner *1/8 + 1/8*  
 Written by me— *Just Oregon*  
*Keeper*

*Just Oregon*, Light-Keeper.  
 Ass't Keeper.



ACCOUNT of Oil, Wicks, and Chimneys expended daily at *Cantonagon*

Light-Houses, in the month of *June 1905*

and showing the time of lighting and extinguishing, and the length of time lighted each night.

DAY.	Time of lighting.		Time of extinguishing the light.		Length of time lighted.		Daily quantity of oil consumed in Light-house or Light-vessel lamps.			Number of chimneys broken each night.	Inches of new wick expended.	Quantity of oil set aside for hand and house lamps.	REMARKS ON THE WEATHER. (Dry, damp, rainy, snowy, light wind, moderate breeze, fresh breeze, or gale, &c.)
	Hour.	Min.	Hour.	Min.	Hour.	Min.	Galls.	Qts.	Pints.				
1	7	29	4	26	8	55	2		2 1/2			Rain light wind N.E	
2	7	30	4	25	8	55	2		2 1/2			Dry " " "	
3	7	31	4	24	8	57	2		2 1/2			Fog fresh " S W + N x S	
4	7	31	4	23	8	58	2		2 1/2	8 1/2		" Light " N.E	
5	7	32	4	23	8	59	2		2 1/2			" Rain light " var"	
6	7	32	4	24	8	51	2		2 1/2			" Rain fresh " N.E	
7	7	33	4	24	8	50	2		2 1/2			Damp light breeze var"	
8	7	34	4	23	8	49	2		2 1/2			Rain " " N.E	
9	7	35	4	23	8	48	2		2 1/2			Damp fog " " var"	
10	7	35	4	23	8	47	2		2 1/2			Rain " " " "	
11	7	36	4	23	8	46	2		2 1/2			Dry Calm	
12	7	37	4	23	8	45	2		2 1/2			Fog " " "	
13	7	36	4	23	8	44	2		2 1/2			Dry " " "	
14	7	37	4	23	8	43	2		2 1/2			" " " "	
15	7	38	4	23	8	44	2		2 1/2			" light breeze N x E	
16	7	39	4	23	8	45	2		2 1/2	8 1/2		Fog Rain fresh breeze N.E	
17	7	39	4	23	8	43	2		2 1/2			" " light " " "	
18	7	39	4	23	8	43	2		2 1/2			Damp " " S & S.W	
19	7	39	4	23	8	43	2		2 1/2			Rain fog " " var"	
20	7	40	4	23	8	42	2		2 1/2			Dry " calm	
21	7	40	4	23	8	42	2		2 1/2			Rain " steady breeze N.E	
22	7	40	4	23	8	43	2		2 1/2			Damp " light " var"	
23	7	40	4	24	8	43	2		2 1/2			" " " " "	
24	7	40	4	24	8	43	2		2 1/2			Rain fog " " "	
25	7	40	4	24	8	43	2		2 1/2			Shut B.O. " fresh wind N.E	
26	7	40	4	25	8	43	2		2 1/2			Can 2.3.0.0 Damp steady breeze " "	
27	7	40	4	25	8	43	2		2 1/2			Dry light " var"	
28	7	40	4	26	8	45	2		2 1/2			" " " " "	
29	7	40	4	26	8	45	2		2 1/2			" " " " "	
30	7	40	4	26	8	46	2		2 1/2	8 1/2		Rain " " " "	
31													

17.1.0.144 24 1/4 5.1.0.0

	GALLONS.	QUARTS.	PINTS.
Total quantity consumed in the lamps of the Light-Houses	17	1	11/6
Total quantity consumed this month for use in the dwelling-house or quarters, and other hand lamps	3	1	
Total quantity expended this month	25	2	11/6

Order of Lens *4 + 5* Kind of Light *9 R + 9 H*  
 Number of Wicks in burner *Cur* Diameter of outer burner *1 1/2 1 1/2*  
 Written by me— *Jas Logan*  
*Keeper*

*Jas Logan*, Light-Keeper.  
 Ass't Keeper.



ACCOUNT of Oil, Wicks, and Chimneys expended daily

at *Antonagon*

Light-Houses in the month of

*July 1905*

and showing the time of lighting and extinguishing, and the length of time lighted each night.

DAY.	Time of lighting.		Time of extinguishing the light.		Length of time lighted.		Daily quantity of oil consumed in Light-house or Light-vessel lamps.				Number of chimneys broken each night.	Inches of new wick expended.	Quantity of oil set aside for hand and house lamps.	REMARKS ON THE WEATHER. (Dry, damp, rainy, snowy, light wind, moderate breeze, fresh breeze, or gale, &c.)
	Hour.	Min.	Hour.	Min.	Hour.	Min.	Galls.	Qts.	Pints.	Gills.				
1	7	40	4	27	8	46	2			2 1/4				Dry light breeze var
2	7	40	4	27	8	46	2			2 1/4				Rain - - -
3	7	40	4	28	8	47	2			2 1/4				" " " E
4	7	40	4	28	8	48	2			2 1/4				" fog " " var
5	7	39	4	29	8	50	2			2 1/4				Damp " " "
6	7	39	4	30	8	50	2			2 1/4				Rain fog " "
7	7	39	4	30	8	51	2			2 1/4				Dry light breeze "
8	7	38	4	31	8	52	2			2 1/2				" " " N E
9	7	38	4	32	8	53	2			2 1/2				" " " var
10	7	37	4	32	8	54	2			2 1/2				" " " W
11	7	37	4	33	8	56	2			2 1/2				" " " S
12	7	37	4	34	8	56	2			2 1/2				" " " W
13	7	36	4	35	8	58	2			2 1/2				" " " "
14	7	35	4	36	8	58	2			2 1/2		8 1/2		" fresh " N.E.
15	7	35	4	36	9	1	2			2 3/4				Rain fog " S x E
16	7	34	4	37	9	3	2			2 3/4				Dry light " var
17	7	33	4	38	9	5	2			2 3/4				" fresh " W
18	7	33	4	39	9	5	2			2 3/4				" steady " "
19	7	32	4	40	9	7	2			2 3/4				" light " var
20	7	31	4	41	9	9	2			3				" " " "
21	7	31	4	41	9	11	2			3				Rain " " "
22	7	30	4	42	9	12	2			3				Damp fresh " N.W.
23	7	29	4	43	9	14	2			3				Rain " wind " "
24	7	28	4	44	9	16	2			3 1/4				Damp " breeze " x W
25	7	27	4	45	9	18	2			3 1/4				Dry steady - W
26	7	26	4	46	9	20	2			3 1/4				" " " var
27	7	25	4	47	9	22	2			3 1/4				" " " "
28	7	24	4	48	9	24	2			3 1/2				Rain light " W
29	7	23	4	49	9	26	2			3 1/2				Dry " " "
30	7	22	4	50	9	28	2			3 1/2		8 1/2		" steady - N.E.
31	7	21	4	51	9	30	2			3 1/2				" light - W

18 2 0 2 3/4 16 1/6 5.1.1.0

	GALLONS.	QUARTS.	PINTS.
Total quantity consumed in the lamp of the Light-Houses	18	2	1 1/6
Total quantity consumed this month for use in the dwelling-house or quarters, and other hand lamps	5	1	1
Total quantity expended this month	23	3	1 1/6

Order of Lens *4 + 5 1/2* Kind of Light *F R + F W*  
 Number of Wicks in burner *one* Diameter of outer burner *1 1/2 + 1 1/8*

Written by me—  
*Jac Antonagon*  
*Antonagon*

*Jac Antonagon*, Light-Keeper.  
 \_\_\_\_\_, Ass't Keeper.



and showing the time of lighting and extinguishing, and the length of time lighted each night.

DAY.	Time of lighting.		Time of extinguishing the light.		Length of time lighted.		Daily quantity of oil consumed in Light-house or Light-vessel lamps.			Number of chimneys broken each night.	Inches of new wick expended.	Quantity of oil set aside for hand and house lamps.	REMARKS ON THE WEATHER. (Dry, damp, rainy, snowy, light wind, moderate breeze, fresh breeze, or gale, &c.)
	Hour.	Min.	Hour.	Min.	Hour.	Min.	Galls.	Qts.	Pints.				
1	7	20	4	52	9	32	2		3 3/4			Dry light breeze var	
2	7	19	4	53	9	35	2		3 3/4			" " " "	
3	7	18	4	54	9	37	2		3 3/4			" " " "	
4	7	17	4	55	9	39	2		1			Rain " " "	
5	7	16	4	56	9	41	2		1			Dry " " "	
6	7	14	4	57	9	43	2		1			" " " "	
7	7	15	4	58	9	45	2		1			" " " var	
8	7	12	4	59	9	47	2		1			" " " "	
9	7	11	5	0	9	50	2		1			" " " "	
10	7	10	5	1	9	52	2		1			Rain - - var	
11	7	9	5	2	9	54	2		1			Dry - - "	
12	7	8	5	3	9	56	2		1			" - - var	
13	7	4	5	5	10	57	2		1			" Steady - N.E	
14	7	3	5	6	10	0	2		1			" Calm	
15	7	2	5	7	10	2	2		1			" light - var	
16	7	0	5	8	10	4	2		1			" " S	
17	6	59	5	9	10	7	2		1			Rain squall "	
18	6	57	5	10	10	10	2		1			" fog light wine var	
19	6	56	5	11	10	14	2		1			dry steady breeze S	
20	6	55	5	12	10	18	2		1			" fresh wine S W & W	
21	6	53	5	13	10	21	2		1			" light "	
22	6	51	5	14	10	23	2		1			" " breeze var	
23	6	49	5	15	10	26	2		1			" Calm	
24	6	48	5	17	10	28	2		1			" light breeze N.E	
25	6	46	5	18	10	31	2		1			" dry - - var	
26	6	45	5	19	10	34	2		1			Rain Calm	
27	6	43	5	20	10	36	2		1			dry Hazy Lt breeze var	
28	6	41	5	21	10	39	2		1			Rain Calm	
29	6	40	5	22	10	42	2		1			dry - -	
30	6	38	5	23	10	44	2		1			" light wine "	
31	6	36	5	24	10	47	2		1			Rain light - N.E	

20 0 0 3 3/4

5110

	GALLONS.	QUARTS.	PINTS.
Total quantity consumed in the lamp of the Light-Houses	20	0	15/16
Total quantity consumed this month for use in the dwelling-house or quarters, and other hand lamps	5	1	1
Total quantity expended this month	25	1	1 5/16

Order of Lens *4" + 5"* Kind of Light *P.R. & W.*  
 Number of Wicks in burner *one* Diameter of outer burner *1/2 + 1/8* inches  
 Written by me— *Just Logan*  
*Keeper*

*Just Logan* Light-Keeper.  
 Ass't Keeper.



ACCOUNT of Oil, Wicks, and Chimneys expended daily at *Antonagon*

Light-Houses, in the month of *Sept 1905*

and showing the time of lighting and extinguishing, and the length of time lighted each night.

DAY.	Time of lighting.		Time of extinguishing the light.		Length of time lighted.		Daily quantity of oil consumed in Light-house or Light-vessel lamps.				Number of chimneys broken each night.	Inches of new wick expended.	Quantity of oil set aside for hand and house lamps.	REMARKS ON THE WEATHER. (Dry, damp, rainy, snowy, light wind, moderate breeze, fresh breeze, or gale, &c.)	
	Hour.	Min.	Hour.	Min.	Hour.	Min.	Galls.	Qts.	Pints.	Gills.					
1	6	55	5	25	10	49	2	-	1	3/4				Rain fresh wind N.E	
2	6	33	5	26	10	53	2	1		2				" gale " "	
3	6	31	5 <sup>pm</sup>	29	22	56	2	1		2				" " - - -	
4	6	30	5	28	10	59	2	1		2				damp light breeze W	
5	6	28	5	29	11	1	2	1		2 1/4				" " " "	
6	6	26	5	30	11	4	2	1		2 1/4				" " " bar	
7	6	25	5	31	11	7	2	1		2 1/4				dry " " "	
8	6	23	5	32	11	10	2	1		2 1/2				" " " "	
9	6	21	5	33	11	12	2	1		2 1/2				" " " "	
10	6	19	5	34	11	15	2	1		2 1/2				dry " " "	
11	6	18	5	35	11	18	2	1		2 3/4				dry " " bar	
12	6	16	5	36	11	21	2	1		2 3/4				" fresh wind N.E	
13	6	14	5	37	11	23	2	1		2 3/4				" light " " - - - first heavy frost last night	
14	6	12	5	39	11	26	2	1		3				Rain gale S.E	
15	6	10	5	40	11	29	2	1		3				Damp light wind bar	
16	6	9	5	41	11	32	2	1		3				" " " "	
17	6	7	5	42	11	34	2	1		3 1/4				dry " " N.E	
18	6	5	5	43	11	38	2	1		3 1/4				Rain " " S.W.S	
19	6	4	5	44	11	41	2	1		3 1/4				" fresh wind N.W.W	
20	6	2	5	45	11	44	2	1		3 1/2				" " " S.W	
21	6	0	5	46	11	46	2	1		3 1/2				dry " " N.S	
22	5	58	5	47	11	49	2	1		3 1/2				" " " "	
23	5	58	5	48	11	52	2	1		3 3/4				" light " bar	
24	5	57	5	49	11	55	2	1		3 3/4				" " " "	
25	5	55	5	50	11	57	2	1		3 3/4				" " " N.E	
26	5	53	5	51	12	0	3	0		0				Rain " " bar	
27	5	57	5	52	12	3	3	0		0				dry Calm	
28	5	48	5	54	12	6	3	0		0				" light breeze S.W.W	
29	5	46	5	55	12	8	3	0		1/4				" fresh wind S.W.	
30	5	44	5	56	12	12	3	0		1/4				" " " "	
31															

21 2 0 3 1/4

	GALLONS.	QUARTS.	PINTS.
Total quantity consumed in the lamp of the Light-Houses	21	2	15/16
Total quantity consumed this month for use in the dwelling-house or quarters, and other hand lamps	5	2	0
Total quantity expended this month	27	0	15/16

Order of Lens *4 + 5<sup>pc</sup>* Kind of Light *2 R + 7 H*  
 Number of Wicks in burner *One* Diameter of outer burner *1 1/2 + 1 1/8*  
 Written by me— *Jack Corigan* Keeper

*Jack Corigan*, Light-Keeper.  
 Ass't Keeper.



ACCOUNT of Oil, Wicks, and Chimneys expended daily *Outonagon* Light-Houses in the month of *October* 1905  
 and showing the time of lighting and extinguishing, and the length of time lighted each night.

DAY.	Time of lighting.		Time of extinguishing the light.		Length of time lighted.		Daily quantity of oil consumed in Light-house or Light-vessel lamps.			Number of chimneys broken each night.	Inches of new wick expended.	Quantity of oil set aside for hand and house lamps.	REMARKS ON THE WEATHER. (Dry, damp, rainy, snowy, light wind, moderate breeze, fresh breeze, or gale, &c.)
	Hour.	Min.	Hour.	Min.	Hour.	Min.	Galls.	Qts.	Pints.				
1	6	35	5	25	12	15	3		1/2			Rain fresh wind N	
2	6	37	5	27	12	19	3		1/2			Dry - - - N x N	
3	6	0	5	59	12	20	3		1/2			" vary - - - N x N	
4	6	35	6	0	12	23	3		3/4			" - - - breeze - - -	
5	6	37	6	1	12	26	3		3/4			" " " " " N	
6	6	33	6	3	12	29	3		3/4			" " " " " SE	
7	6	32	6	4	12	31	3		1			" " " " " N	
8	6	30	6	5	12	34	3		1			" Calm	
9	6	29	6	6	12	38	3		1 1/4			Rain very fresh wind S N x N W	
10	6	27	6	7	12	40	3		1 1/4	See No 8 1/2		" Snow / gale N x N x N	
11	6	25	6	8	12	43	3		1 1/4			" Sleet + Snow - N x N x N	
12	6	24	6	9	12	45	3		1 1/2			Damp light breeze bar	
13	6	22	6	10	12	48	3		1 1/2			" " " " "	
14	6	20	6	12	12	51	3		1 1/2			Rain " " " "	
15	6	19	6	13	12	54	3		1 1/2			" Hail Snow / gale S N x N	
16	6	17	6	14	12	57	3		1 1/4			" fresh wind " " "	
17	6	16	6	15	13	0	3		1 1/4			" " " " N	
18	6	14	6	16	13	2	3		1 1/4			" " " " N N	
19	6	13	6	17	13	5	3		2			" Snow Gale N. Ee	
20	6	11	6	19	13	7	3		2			Rain fresh breeze S N x N W	
21	6	9	6	20	13	11	3		2			" Snow light - N N	
22	6	8	6	21	13	13	3		2 1/4			Damp fresh - " " x N	
23	6	6	6	22	13	16	3		2 1/4			" " " " N N	
24	6	4	6	23	13	18	3		2 1/4			" steady " " "	
25	6	27	6	25	13	20	3		2 1/4			" light - S	
26	6	28	6	26	13	21	3		2 1/2			Rain Snow / gale N. N	
27	6	30	6	27	13	24	3		2 1/2	8 1/2		Snow / gale N. N	
28	6	31	6	28	13	26	3		2 1/2			Damp fresh wind S. N	
29	6	32	6	30	13	29	3		2 1/4			Snow light " " "	
30	6	33	6	31	13	34	3		2 1/4			Damp fresh " " "	
31	6	34	6	32	13	37	3		2 1/4			Snow " " " N N	

24 3 0 3/2 16 1/6 5.5 0.0

	GALLONS.	QUARTS.	PINTS.
Total quantity consumed in the lamp of the Light-Houses	24	3	3/16
Total quantity consumed this month for use in the dwelling-house or quarters, and other hand lamps	5	3	
Total quantity expended this month	30	2	3/16

Order of Lens *4<sup>th</sup> + 5<sup>th</sup>* Kind of Light *FR 1 1/2 N*  
 Number of Wicks in burner *One* Diameter of outer burner *1 1/2 + 1 1/8*  
 Written by me— *James Dorgan*  
*Keeper*

*James Dorgan*, Light-Keeper.  
 \_\_\_\_\_, Ass't Keeper.



ACCOUNT of Oil, Wicks, and Chimneys expended daily at *Autonagon* Light-House, in the month of *Nov 1905*, 1883  
 and showing the time of lighting and extinguishing, and the length of time lighted each night.

DAY.	Time of lighting.		Time of extinguishing the light.		Length of time lighted.		Daily quantity of oil consumed in Light-house or Light-vessel lamps.				Number of chimneys broken each night.	Inches of new wick expended.	Quantity of oil set aside for hand and house lamps.	REMARKS ON THE WEATHER. (Dry, damp, rainy, snowy, light wind, moderate breeze, fresh breeze, or gale, &c.)
	Hour.	Min.	Hour.	Min.	Hour.	Min.	Galls.	Qts.	Pints.	Gills.				
1	4	54	6	33	13	39		3		3				Snow & gale N.W
2	4	58	6	34	13	41		3		3				Damp fresh wind W
3	4	57	6	36	13	45		3		3 1/4				" " " "
4	4	50	6	37	13	47		3		3 1/4				" Calm
5	4	49	6	38	13	49		3		3 1/2				Rain light breeze SW
6	4	48	6	39	13	51		3		3 1/2				Damp fresh wind N.W
7	4	47	6	41	13	54		3		3 1/2				Snow " " N x E + N x W
8	4	46	6	42	13	57		3		3 1/2				" " " N + N x W
9	4	45	6	43	13	59		3		3 1/4				Damp " breeze N x W x W
10	4	44	6	44	14	1		3		3 3/4		8 1/2		Dry " " S.W.
11	4	43	6	45	14	4		3		3 3/4				" " " " "
12	4	42	6	47	14	6		3		3 3/4				Snow & gale N.E
13	4	41	6	49	14	8		3	1					Damp fresh wind SW
14	4	40	6	50	14	10		3	1					Snow " " N.W
15	4	39	6	52	14	12		3	1					" " " " "
16	4	38	6	53	14	14		3	1	1/4				Damp light " S.W
17	4	37	6	55	14	16		3	1	1/4				" " " " "
18	4	36	6	56	14	18		3	1	1/4				" " " " "
19	4	35	6	57	14	21		3	1	1/2				" Calm
20	4	34	6	58	14	23		3	1	1/2				" " " " "
21	4	34	6	59	14	24		3	1	1/2				" light breeze var
22	4	33	7	1	14	26		3	1	1/2				" " " " "
23	4	32	7	2	14	28		3	1	3/4				Rain " " "
24	4	31	7	3	14	30		3	1	3/4		8 1/2		" Snow gale N.W
25	4	31	7	4	14	32		3	1	3/4				Snow Calm
26	4	31	7	5	14	33		3	1	3/4				Damp steady breeze S E
27	4	31	7	6	14	35		3	1	1				Snow & gale N.E
28	4	30	7	7	14	36		3	1	1				" " " " "
29	4	30	7	8	14	37		3	1	1				" " " " "
30	4	29	7	9	14	39		3	1	1				" gale " " "
31														Damp light breeze N.E x N

26 1 0 3 16 1/2 5.3.1.0

	GALLONS.	QUARTS.	PINTS.
Total quantity consumed in the lamp of the Light-Houses	26	1	2 1/4
Total quantity consumed this month for use in the dwelling-house or quarters, and other hand lamps	5	3	1
Total quantity expended this month	32	0	1 1/4

Order of Lens. *4 + 5<sup>th</sup>* Kind of Light. *GR - 7<sup>th</sup>*  
 Number of Wicks in burner *one* Diameter of outer burner *1/2 + 1/8*

Written by me—  
*Jaques*  
 Keeper

*Jaques*, Light-Keeper.  
 Ass't Keeper.



ACCOUNT of Oil, Wicks, and Chimneys expended daily *at Outonagon* Light *House*, in the month of *Dec 1905*, ~~189~~  
 and showing the time of lighting and extinguishing, and the length of time lighted each night.

DAY.	Time of lighting.		Time of extinguishing the light.		Length of time lighted.		Daily quantity of oil consumed in Light-house or Light-vessel lamps.				Number of chimneys broken each night.	Inches of new wick expended.	Quantity of oil set aside for hand and house lamps.	REMARKS ON THE WEATHER. (Dry, damp, rainy, snowy, light wind, moderate breeze, fresh breeze, or gale, &c.)
	Hour.	Min.	Hour.	Min.	Hour.	Min.	Galls.	Qts.	Pints.	Gills.				
1	4	29	7	9	14	41	3	1	1				Damp very light breeze var	
2	4	29	7	10	14	42	3	1	1/4				Snow fresh - N x N	
3	4	29	7	11	14	42	3	1	1/4				" " wind N	
4	4	29	7	12	14	45	3	1	1/4				Damp " " N E	
5	4	28	7	14	14	46	3	1	1/4				" Steady - S	
6	4	28	7	14	14	47	3	1	1/4				" light - var	
7	4	28	7	15	14	48	3	1	1/4				" " " "	
8	4	28	7	16	14	49	3	1	1/4				" Steady " " "	
9														
10														
11														
12														
13														
14														
15														
16														
17														
18														
19														
20														
21														
22														
23														
24														
25														
26														
27														
28														
29														
30														
31														

7 1 0 2 1/4      5. 3. 1. 0

	GALLONS.	QUARTS.	PINTS.
Total quantity consumed in the lamp of the Light <i>House</i>	7	1	5/16
Total quantity consumed this month for use in the dwelling-house or quarters, and other hand lamps	5	3	1
Total quantity expended this month	13	0	1 5/16

Order of Lens *4 + 5<sup>th</sup>* Kind of Light *GR - N*  
 Number of Wicks in burner *One* Diameter of outer burner *1 1/2 + 1/8 inches*

Written by me—  
*Jas. Morgan*  
*Keeper*

*Jas. Morgan*, Light-Keeper.  
 Ass't Keeper.



and showing the time of lighting and extinguishing, and the length of time lighted each night.

DAY.	Time of lighting.		Time of extinguishing the light.		Length of time lighted.		Daily quantity of oil consumed in Light-house or Light-vessel lamps.				Number of chimneys broken each night.	Inches of new wick expended.	Quantity of oil set aside for hand and house lamps.	REMARKS ON THE WEATHER. (Dry, damp, rainy, snowy, light wind, moderate breeze, fresh breeze, or gale, &c.)
	Hour.	Min.	Hour.	Min.	Hour.	Min.	Galls.	Qts.	Pints.	Gills.				
1														
2														
3														
4														
5														
6														
7														
8														
9														
10														
11														
12														
13														
14														
15														
16														
17														
18														
19														
20														
21														
22														
23														
24														
25														
26														
27														
28														
29														
30														
31														

Total quantity consumed in the lamp of the Light- _____	GALLONS.	QUARTS.	PINTS.
Total quantity consumed this month for use in the dwelling-house or quarters, and other hand lamps _____			
Total quantity expended this month _____			

{ Order of Lens \_\_\_\_\_ Kind of Light \_\_\_\_\_  
 { Number of Wicks in burner \_\_\_\_\_ Diameter of outer burner \_\_\_\_\_  
 Written by me— \_\_\_\_\_, Light-Keeper.  
 \_\_\_\_\_, Ass't Keeper.



