











### The Peninsula Bank Ishpeming, Mich.

Statement of Condition at the Close of Business May 1st, 1915.

Condensed from Statement to Commissioner State Banking Department.

RESOURCES:		LIABILITIES:	
Loans, Discounts and Bonds .....	\$758,694.88	Capital Stock .....	\$ 50,000.00
Banking House .....	15,000.00	Surplus Fund .....	50,000.00
Overdrafts .....	23.70	Undivided Profits, Less Expenses and Taxes .....	39,163.96
Cash Resources .....	185,654.86	Dividends Unpaid .....	172.00
		Deposits .....	806,787.48
		Reserved for interest .....	13,250.00
	\$959,373.44		\$959,373.44

**DIRECTORS:**

THOS. WALTERS,	THOS. H. BARGH,	THOS. W. HUGHES,
GEO. F. THONEY,	H. F. HEYN,	JOHN KANDELIN,
OTTO EGER,	LARS HOYSETH,	JOS. MITCHELL,

Three per cent interest paid on Savings Accounts.

### Ishpeming Department

#### HEAVY SHIPMENTS FROM MESABA RANGE

Oliver Company Has Started to Strip New Property Near Chisholm.

The tonnage of ore moved from the Mesaba this season promises to be greatly in excess of last year's shipments. Several mines are preparing to increase their output and much ore is now being shipped as the carriers can handle. The movement started on a larger scale than was expected, and the output has been increasing daily ever since the first ore train left the range.

The Oliver Iron Mining company will be among the heaviest shippers. It has already started to remove great quantities of gravel from the Sellers pit, in preparation for more active mining at that property. The gravel is being utilized to form a balance grade for the Hull-Rust cut-out.

The Oliver company has started a steel shaft on a new property south of Chisholm. It is one of the two holdings developed this season in the Chisholm district. The mine buildings will be constructed of concrete. A small crew is now employed, and a larger force will be at work there within a few weeks. Captain Leo Mitchell, of the Mesaba mine, has charge of the development work. A shaft is also being sunk in the South Myers property.

One thing which has added considerably to the amount of ore shipped is the removal of the stockpiles from the Mesaba to the limestone mines at Virginia. These stockpiles were interfering with mining operations underground and the ore is being moved as rapidly as possible.

The Hull-Rust mine at Hibbing is the most active property on the range. It is working night and day and more than 600 carloads of ore leave the property every twenty-four hours.

A great many of the men who were idle during the winter have been put to work in the past thirty days, and the forces will be considerably increased within the next month or so. It is said that there are still some idle men in the district, but most of them have come from other points, expecting to find employment.

Asplund inquest. Jury Finds That Miner Came to His Death Accidentally.

The jury in the case of Charles Asplund, the miner who was killed Friday at the Cleveland Lake property, and whose funeral will be held this afternoon, yesterday rendered a verdict to the effect that Asplund came to his death accidentally and that no blame could be attached to John Lamin, the underground captain, John Frostey, Brent Wiggins, George Cox and John T. Quine, the mine inspector, were the witnesses. Mr. Wiggins was Asplund's partner and was near him when he was struck by the piece of timber which caused his death.

The miners testified that the ground and timber looked perfectly safe. The timber was put in place by Asplund and his partner two days prior to the fatality. Friday morning the miners blasted, and it is thought that the leg of the timber was shifted by the blast, though Wiggins testified that neither he nor Asplund observed that it had been disturbed. The miners considered the drift perfectly safe to work in and they could not explain how the timber came to fall.

**ISHPEMING IN BRIEF.**

Nearly an inch of snow fell here Sunday night.

Charles Cummings, the county surveyor, is doing some surveying for farmers in the district south of Ishpeming.

John Bodge, of Minneapolis, of the diamond drill contracting firm of Longyear & Hodge, was in the city yesterday.

Births recorded in the city yesterday are a daughter to Mr. and Mrs. John Leon, 322 West Division street, and a son to Mr. and Mrs. Dominick Vito Tasson, 325 Carp street.

Mrs. Stephen J. Murphy, formerly of this city, who died Friday in a sanitarium at Waukesha, Wis., was buried yesterday in Escanaba, where the family had made their home for several years.

The Queen Esther Girls of the Salisbury Methodist church congregation linked to Palmer and back Saturday. They made the trip each way in about three hours. The outing was much enjoyed.

The funeral of June Buzzo, daughter of Captain Arthur Buzzo, was held yesterday afternoon from the First Methodist Episcopal church. A number of relatives and friends from out of the city attended the services. Services were conducted by Rev. N. C. Karr, the pastor.

A special meeting of the Ishpeming Advancement association will be held this afternoon at 2:30 o'clock in the Y. M. C. A. building. Several matters of interest to the merchants, including the closing of the stores for a half day each week during the summer months, will be discussed, and the officers desire all of the merchants in the city to attend the meeting.

The city crew will by tomorrow night finish laying pipe for the main trunk sewer in the district leading through the Carp river valley. Work will then be started on the lateral sewers, of which there are over 5,000 feet to be put in. A total of 3,886 feet of twenty-four-inch pipe will be laid in the main trunk sewer. There are about 200 feet still to put in. The lateral sewers will be of ten, twelve and fifteen-inch pipe.

For the accommodation of people who will attend the recital to be given at the Marquette Opera House this evening by Fritz Kreisler, the world's premier violinist, the South Shore will run a special train, leaving Ishpeming at 7:15 and returning directly after the concert. The fare for the round trip will be fifty cents. Mr. Kreisler, who played at the Kerledge theater at Hancock last night, will make the trip to Marquette on South Shore train No. 2, passing through here early this afternoon.

**COMMISSION LETS CONTRACT.**

Snell, Hill & Kirkela Will Build Three Miles of Highway West of Here.

The county road commission has given Snell, Hill & Kirkela a contract to rebuild three miles of the highway between Champion and Michigan. The work will be started this week. Mr. Snell is an Ishpeming man, who owns and operates a farm at Maple Ridge and Kirkela lives in Republic. The contractors operated a saw mill in the district south of Ishpeming last winter and their lumber was hauled to Republic, where it was loaded on the cars. Their winter's cut was about 150,000 feet, and most of it was sold to the Consolidated Fuel & Lumber company of this city. They have had some previous experience in road building and they were the lowest bidders on the job.

**COMEDY PROGRAM TODAY.**

Attractive Pictures Will Be Presented at Ishpeming Theater.

One of the most attractive comedy programs presented at the Ishpeming theater in months will be shown today. The famous Charles Chaplin the world's funniest motion picture comedian, will be seen in one of his latest one-act comedies, "In the Park," and Wallie Van, one of the Vitagraph company's popular stars, will be seen in a two-act feature, "The Wrong Girl." Another picture will be the Hearst-Selig News Picture, showing interesting war scenes from three different European countries. The DeGroffs, who present a pleasing comedy slack wire and acrobatic act, will furnish the vaudeville.

At a matinee this afternoon at 4 o'clock school children from the kindergarten to the eighth grade, inclusive, will be admitted free on coupons clipped from yesterday's issue of The Mining Journal. The price for children not having coupons will be five cents and for adults ten cents.

**LYRIC** **Wednesday, MAY 19**

MATINEE: 5c to all. NIGHT: 5 and 10c.  
(NO COUPONS ACCEPTED)

WORLD'S FILM CORPORATION PRESENTS  
**ROBERT WARWICK and BARBARA TENNANT in**  
**"THE DOLLAR MARK"**  
(A Wm. A. Brady Feature in 5 Acts)  
A thrilling tale of the Cobalt region when the greed for gold made men's lives cheap.

COMING SOON:  
**"THE DIAMOND FROM THE SKY"**

**THE very best and cheapest fuel for summer days is PIN WOOD, which is all Hardwood and comes in miscellaneous lengths and sizes. We deliver a big box full for \$4.50 cash. Try a load of it.**

**Consolidated Fuel & Lumber Company.**

#### SPRING EXCURSIONS.

South Shore Will Give Rail and Lake Trips in Connection With D. & C.

The fourth annual spring excursion over the South Shore, in connection with the Detroit & Cleveland Navigation company's steamers, to Cheboygan, Alpena, Harbor Beach, Port Huron, Detroit, Cleveland and Buffalo, have been announced for Wednesday, June 9; Saturday, June 12; Wednesday, June 16, and Saturday, June 19. The round trip fare from Ishpeming to Detroit will be \$8.30; to Toledo, \$9; Cleveland, \$10; and Buffalo \$10.50.

The trip from St. Ignace to Detroit requires twenty-five hours. The trip to Buffalo and return will be made on the steamers "City of Detroit III" and "City of Cleveland," which are said to be the finest steamers on fresh water. They leave Detroit at 5 o'clock daily and arrive in Buffalo the following morning.

**WORLD'S FILMS AT THE LYRIC.**

The management of the Lyric theater has entered into a contract with the World Film corporation, as a result of which the Lyric will show a World's five-reel feature each Wednesday. Stars of worldwide fame will appear in the cast of every attraction. The first of these features will be shown at the Lyric tomorrow—Robert Warwick and Barbara Tennant in "The Dollar Mark," a Wm. A. Brady production in five acts. While there will be no increase in prices, coupons will not be accepted for these productions.

### The Miners' National Bank, Ishpeming, Mich.

Statement May 1st, 1915.

(Comptroller's Call)

RESOURCES:		LIABILITIES:	
Loans and Discounts .....	\$1,127,647.50	Capital .....	\$ 100,000.00
Overdrafts .....	281.45	Surplus .....	109,000.00
Banking House .....	35,410.12	Undivided Profits .....	15,564.66
Other Real Estate .....	11,250.00	Circulation .....	98,690.00
U. S. and Other Bonds .....	301,556.00	Deposits .....	1,389,585.50
Federal Reserve Bank .....	17,511.65	Reserved for Interest .....	1274.00
Cash and Exchange .....	211,538.74	Reserved for Taxes .....	750.00
		Reserved for Discount on U. S. bonds .....	4,500.00
	\$1,705,194.86		\$1,705,194.86

### Cook With GAS

SAVE WORRY  SAVE WORK



The cheapest and best fuel.

**MARQUETTE COUNTY GAS & ELEC. CO.**

### ISHPEMING THEATRE.

**TODAY**  
**Big Comedy Show**  
**Charles Chaplin**  
in  
**"In the Park"**  
**WALLIE VAN**  
in  
**"The Wrong Girl"**  
Two-reel Vitagraph Comedy  
**HEARST-SELIG NEWS**  
**THE DEGROFFS**  
Comedy Slack Wire and Acrobatic  
Matinee at 4  
Each school child presenting a coupon from yesterday's Mining Journal will be admitted free. Present coupons unfilled. Admission for others: Adults 10 cents; children, 5 cents. Come early for seats.

**TOMORROW**  
**Wilton Lackaye**  
in the Great Brady Play  
**"THE PIT"**  
in five reels  
Matinee at 4-Five and ten cents. Evening-Five, ten and fifteen cents.

**THURSDAY—"HAM" and "BUD"**  
those funny Kalem comedians, in  
"Ham at the Garbage Men's Ball"  
A Side Splitter.

**FRIDAY**  
**"Exploits of Elaine"**  
10th Episode.  
Flora Finch and Kate Price in comedy—"TWO AND TWO"

**Strawberries**  
and  
**Fresh Vegetables**  
of All Kinds  
Every Day This Week  
at  
Headquarters For  
Good Things to Eat  
**J. Sellwood & Co.**



**Announcing an Exhibition of the new Redfern Models by an associate designer of**

**Redfern Corsets**

**for three days this week, Thursday, Friday and Saturday.**

The shapeless uncorsetted effects that have prevailed for several seasons are a thing of the past. Fashion's latest decree is a trim, shapely figure.

Every woman interested in the correct corsetting of her figure and its shaping into the new lines required by this season's fashions should visit our corset section some time during the three days and be fitted to one of these new models.

**Redfern Corsets**  
are the climax of corset elegance, style and comfort. They are worn by the most fashionably gowned women of New York and Paris, because they are the best.

If you wear a Redfern Corset you are fortified by the consciousness that your figure is corsetted on absolutely correct and fashionable lines, and in the most healthful manner. With the Redfern Corset as a foundation, the success of your new gown or suit is practically assured.

Make an appointment with the expert corsetiere for a personal fitting in one of the private rooms of our corset section.

**J. Sellwood & Co.**

Mortgaging the Future

When you use up today what you should save for the needs and opportunities of a later period in your career, you are putting a burdensome mortgage on your future.

You can make the present help and not hinder your future by steadily building up a cash reserve in the savings department of this strong, old national bank.

FIRST NATIONAL BANK

Capital and Surplus, \$200,000 Negaunee, Michigan

Do You Know--

- THAT--The Negaunee State Bank sells money orders. THAT--their money orders are payable in all parts of the world. THAT--you can save time and money by using them.

The Negaunee State Bank

CAPITAL \$50,000. SURPLUS (earned) \$6,500.

Markets

WALL STREET MARKS TIME AWAITING REPLY TO U. S. NOTE

New York, May 17.--The undertone and general aspects of today's very dull and uninteresting stock market were accepted as an indication that the complex international situation still is in process of mental digestion and that no very definite movement is probable pending the receipt of Germany's reply to Washington's note.

Table of stock market prices including items like Anaconda, American, and various other commodities.

included, eggs sold at 17 1/2 @ 18 1/2 cents; ordinary firsts, 16 1/2 @ 17 1/2; firsts, 18 1/2 @ 19 1/2. Poultry, alive, steady; fowls, 16 cents.

CROP DAMAGE REPORTS SEND WHEAT UPWARD

Chicago, May 17.--Crop damage that may amount to one hundred million bushels resulted today in a swift advance of the price of wheat. Reports of insect injury to growing wheat, especially in Missouri, were said to be the worst for many years.

Mining News

NEW ARCADIAN

President Shields of the New Arcadian says with regard to the results obtained from the recent run of the Franklin mill: "The run was an unqualified success. From 1,870 tons of rock stamped the yield in mineral amounted to 59,955 pounds, or better than thirty-one and one-half pounds to the ton."

Paine, Webber & Co.

Boston, Mass. Bankers and Brokers Specialists in Copper Mining Stocks and high grade investment securities.

Direct private wire connection from our branch offices with all prominent exchanges.

CALUMET BRANCH, W. L. Stannard, Mgr. HOUGHTON BRANCH, S. E. Byrne, Mgr.

Established 1904 Phones 820 and 822

J. A. Minnear & Co. BROKERS

Laurium, Michigan

Direct private wires to Boston, New York and all the principal exchanges. We likewise have correspondents in the different curb centers of the country, such as Philadelphia, Toronto, Salt Lake, etc.

Negaunee Department

OVER \$700 SPENT IN RELIEF WORK

Was Decided Yesterday to Make Charities Association a Permanent Body.

The United Charities association, which has been doing excellent work among the poor families in the city since it was organized in February, will be a permanent body and the relief work will be continued as it is needed.

Miss Gaffney, the secretary, presented reports showing the contributions, disbursements and activities of the association. In all \$784.44 was contributed and \$755.43 was disbursed, leaving \$29.01 on hand.

GRANBY CONSOLIDATED. The Granby Consolidated directors will meet in New York today and will accord to indications, resume dividends at the rate of \$1.50 quarterly.

The members of the ward committees made 347 visits while investigating the applications for relief. Thirteen cases of chronic and twenty-five cases of temporary illness were found by the association.

MATTSON LEFT TRACK AT PALMER

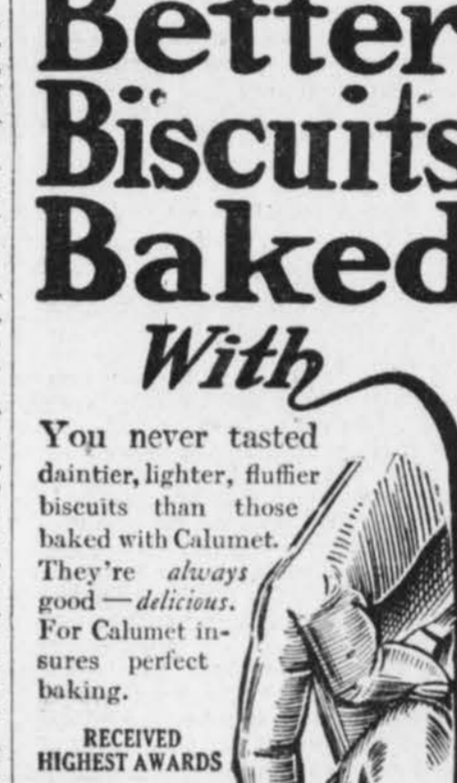
Loaded With Fire Water, He Escaped Task of Cleaning Out Store and Postoffice.

Swan Mattson, who is regarded by residents of Palmer as a tough character, tried to clean out the Palmer store and postoffice Sunday morning, and is in the city jail awaiting a hearing on a charge of criminal assault.

Mattson, who was intoxicated, entered the store Sunday morning and conducted himself in such a manner that it was necessary for Harry Davidson, the proprietor, and Alfred Williamson, the postmaster, to eject him from the building.

LOCAL LACONICS. Swanson & Chase yesterday received a new delivery wagon. Robert C. Lowe, of Marquette, was a business caller in the city yesterday.

Better Biscuits Baked With You never tasted daintier, lighter, fluffier biscuits than those baked with Calumet. They're always good--delicious. For Calumet insures perfect baking.



RECEIVED HIGHEST AWARDS World's Pure Food Exposition, Chicago, Illinois. Paris Exposition, France, March, 1912.

One of the means for raising money for the continuance of the athletic work will be a concert, which will be given some time within the next few weeks at the high school auditorium.

The members of the Jackson Rebecca lodge will entertain members from the Marquette and Ishpeming branches of the society this evening in their lodge rooms.

YOU ARE WELCOME at the Negaunee National Bank. Do business with us and you will always have the satisfaction of knowing that your funds are being cared for by an institution that is under United States government supervision.

Negaunee National Bank

Designated United States Depository

WANTED--To rent, four, five or six-room house, with modern conveniences. Tel Butler. (5-18-20). FOR SALE--Middle-aged, 1490 pound mare; will sell cheap. Frank Verrellino, New Swanzyer, Gwin Postoffice. Phone 78-J. (5-17-21).

Cut Flowers DAFFODILS CALLA LILIES TULIPS ROSES NARCISSUS CARNATIONS EASTER LILIES SMILAX

Potted Plants GERANIUMS PETUNIAS TULIPS PRIMROSES HYACINTHS HYDRANGEAS

Palms and Ferns Negaunee Greenhouses Negaunee, Mich.

Upper Peninsula Commercial Club Elects Officers. The directors of the Manistique Commercial club, has elected the officers for the coming year.

Will Increase County Herd of Holsteins At a meeting of the board of supervisors this week the project of increasing the county herd of Holstein cattle received the approval of all members present.

Castle Brew IT'S GREAT! Positively No Better BEER made Nothing But the Best brewing material, together with the purest spring water, is used in its manufacture.

Swanson & Chase FUNERAL DIRECTING. EMBALMING. Night call phone 161

DANGER TO CHILDREN. Serious illnesses often result from lingering coughs and colds. The hacking and coughing and disturbed sleep rack a child's body and the poisons weaken the system, so that disease cannot be thrown off.

Lawrence College Appleton, Wisconsin Where Ideals Are Acquired and a High Grade of Work Done. Do you want to be thoroughly prepared for the responsibilities of life? Do you want to take a place in the world--socially, mentally, equipped to hold your own? THEN GO TO COLLEGE.

Established 1904 Phones 820 and 822 J. A. Minnear & Co. BROKERS Laurium, Michigan Direct private wires to Boston, New York and all the principal exchanges.

