

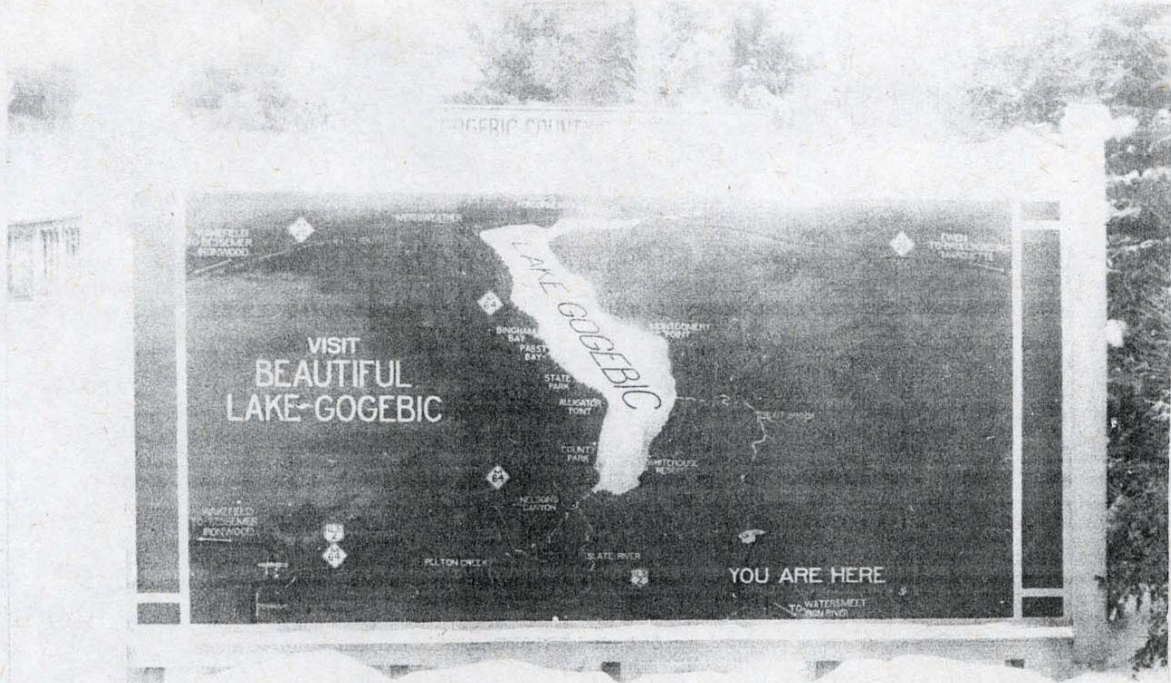
WORKERS IN THE SIGN SHOP

Picture

Jack Hukkala and L. Fredlund routed letters by hand at Camp Pori CO 682 in Upper Peninsula, Michigan. Pori Camp in the Ottawa National Forest was constructed in the '30s, temporarily closed with the advent of WWII, but later re-opened as a German prisoner-of-war camp.

Submitted by Arne Jauhainen

CO-632

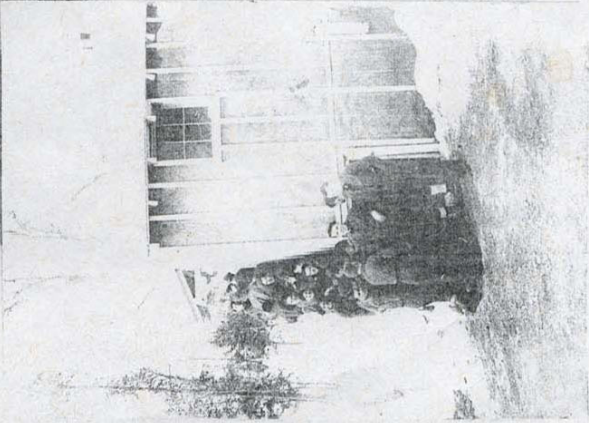
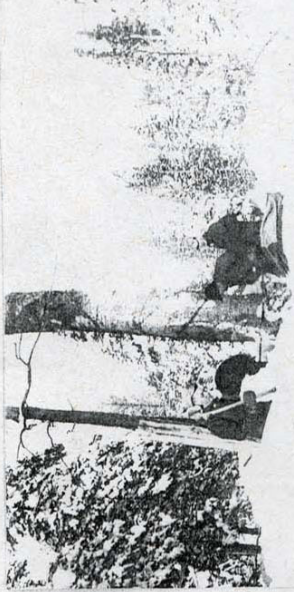
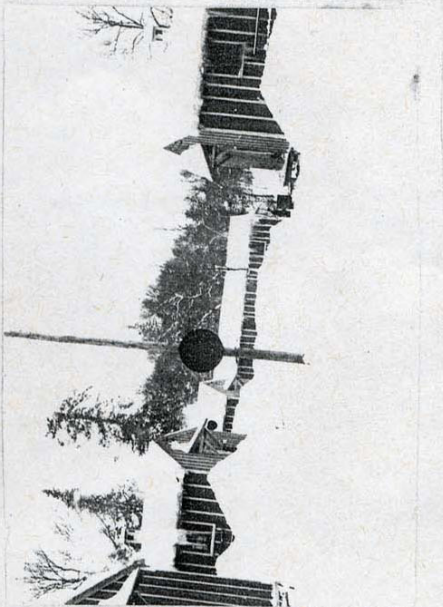


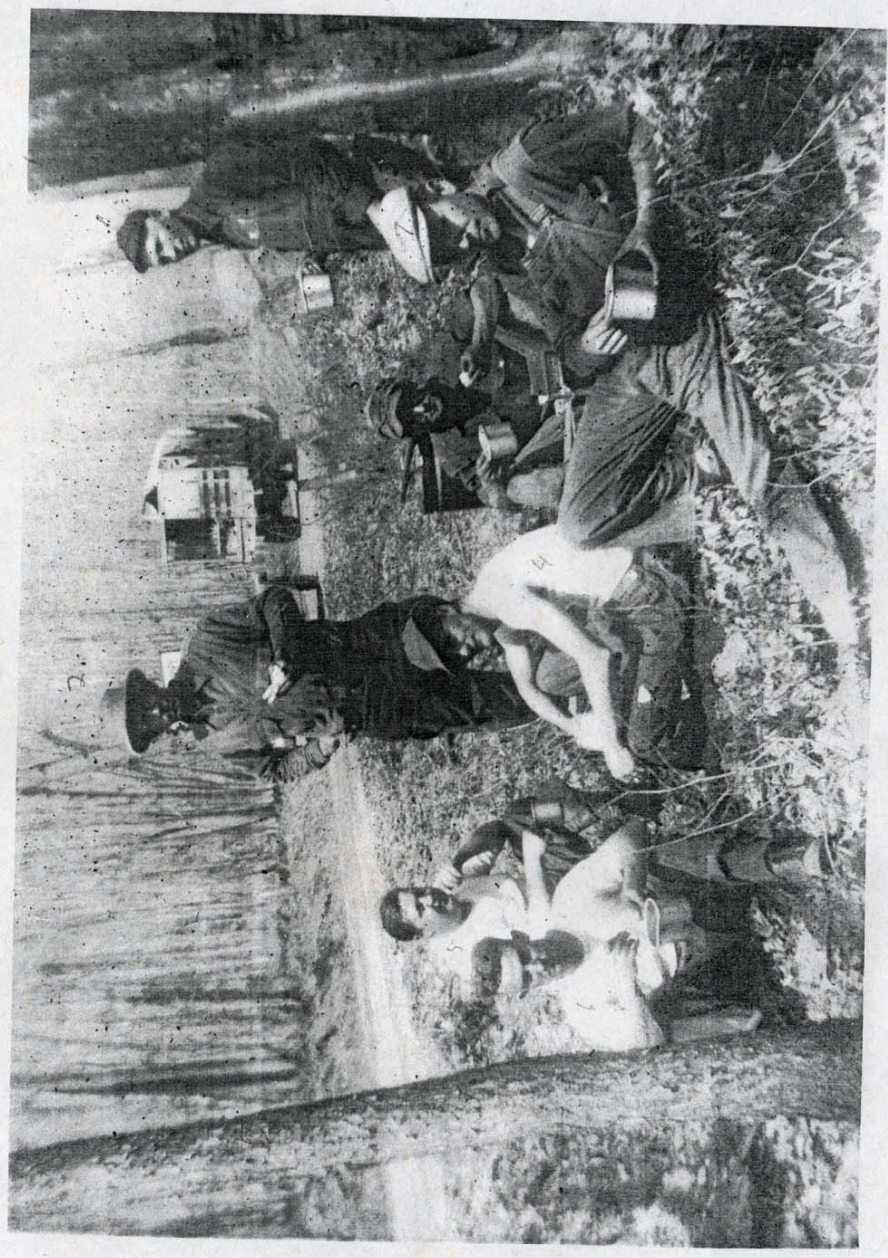
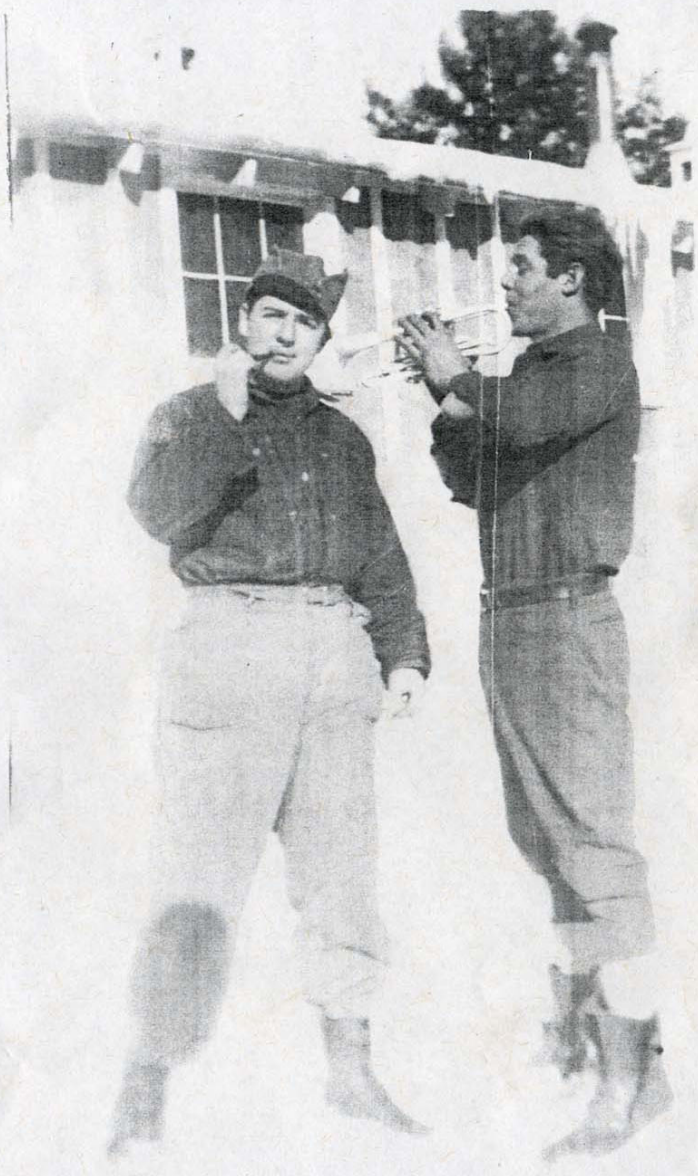
Torrance, Calif. 90503 #PV119E

Ralph Deabe)

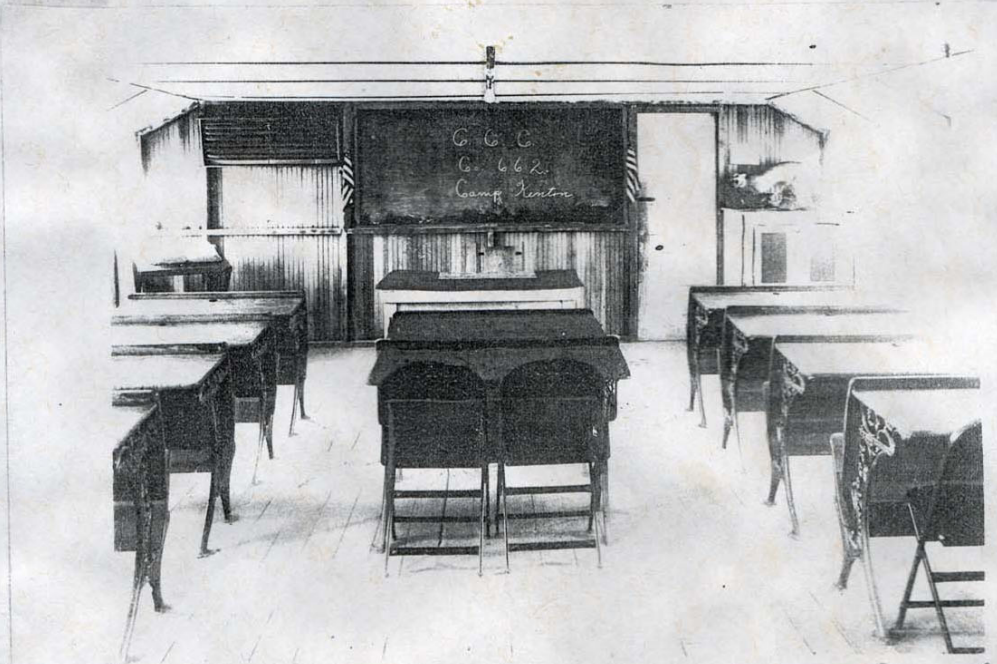


ENTRANCE SIGN





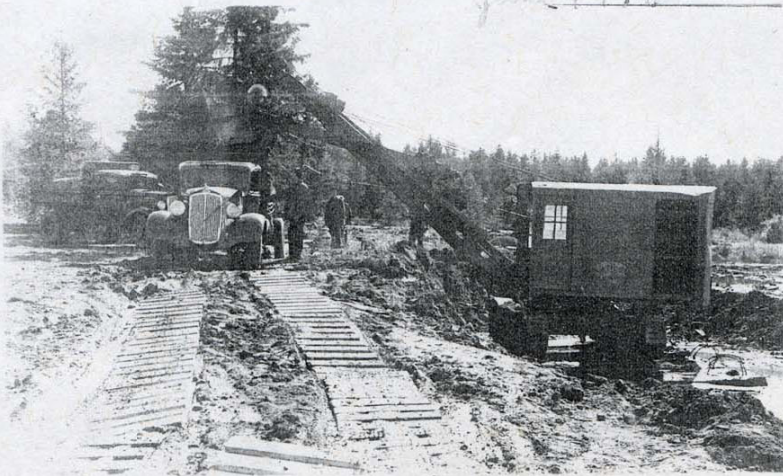
C. C. C. CO. 662
KENTON, MICH
454



Co. 662 Camp Kenton, Kenton, Mich

CO-3601. SP-17

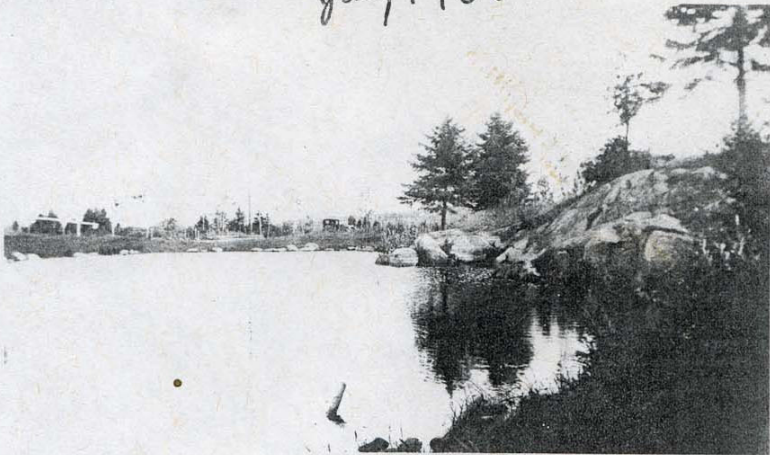
June 1936



33

Camp Morris

July 1936



74

at Morris



137

Camp Morris

June 1937



121

Camp Morris