

# PHOTOGRAPHS OF THE MENOMINEE IRON RANGE MINES

*[Compiled and Captioned by William John Cummings]*

## UNIDENTIFIED MINES AND MINERS



This unidentified mine photograph was taken by Jorgen J. Eskil, pioneer Menominee Range photographer, in April, 1899. *[Menominee Range Historical Museum]*

# PHOTOGRAPHS OF THE MENOMINEE IRON RANGE MINES

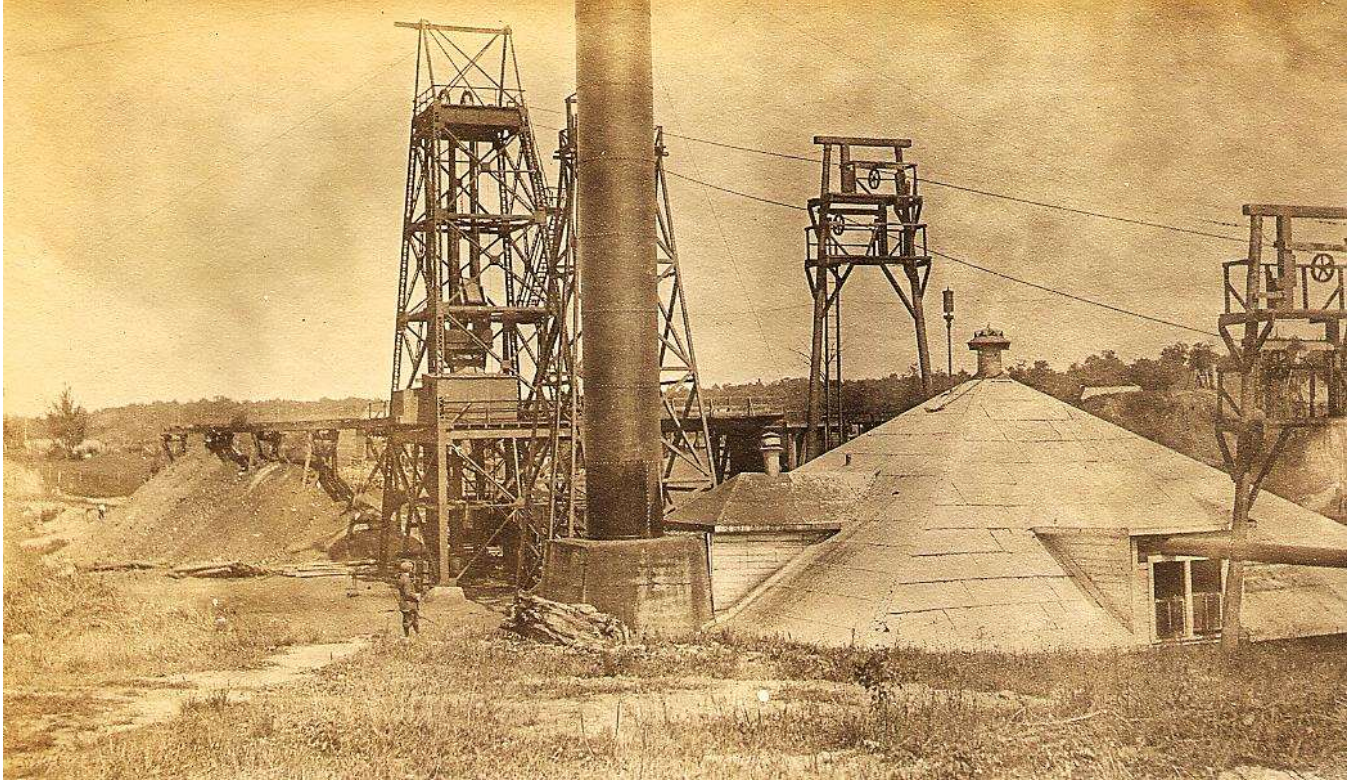
*[Compiled and Captioned by William John Cummings]*



This unidentified photograph could show a mine in Dickinson County. *[Menominee Range Historical Museum]*

# PHOTOGRAPHS OF THE MENOMINEE IRON RANGE MINES

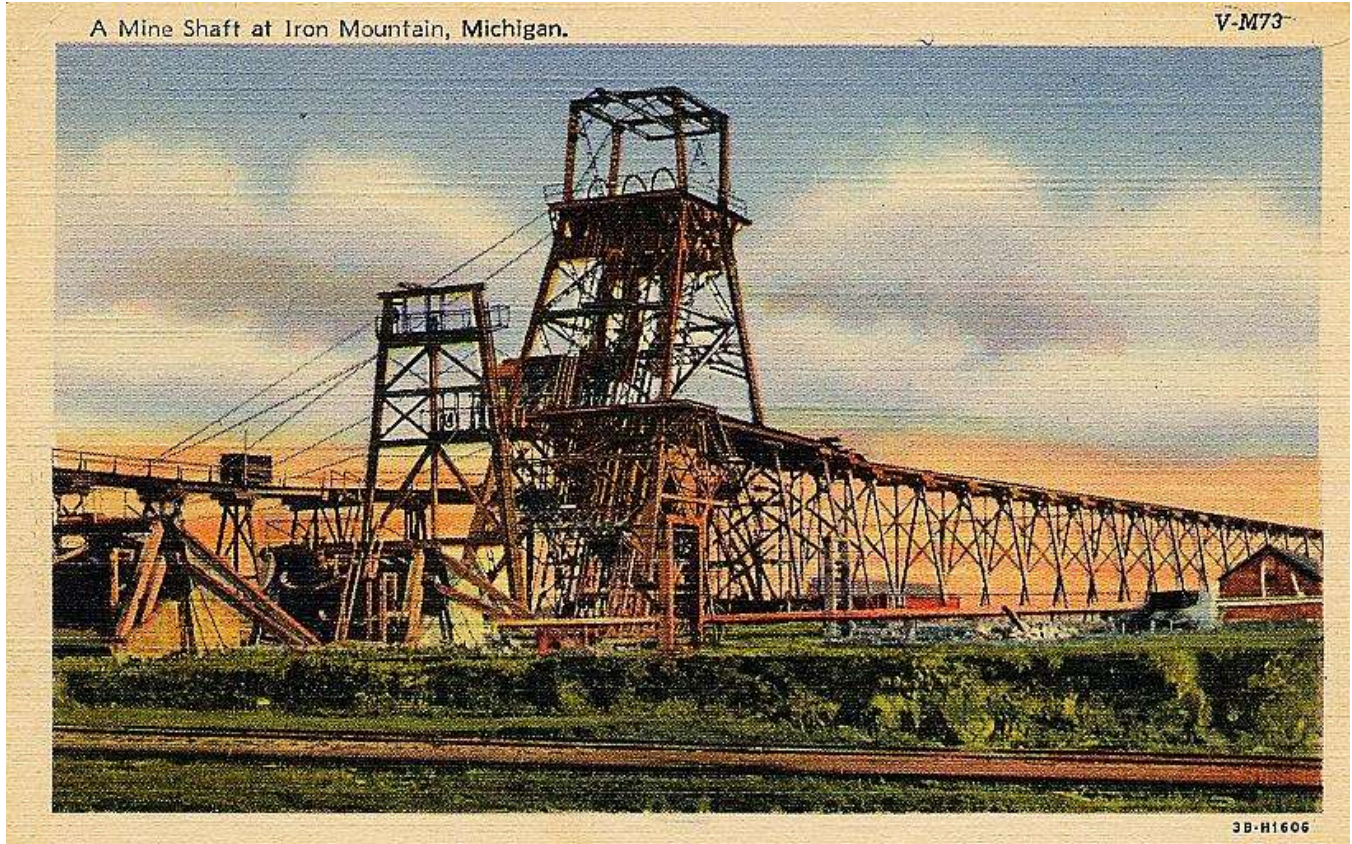
*[Compiled and Captioned by William John Cummings]*



This unidentified photograph could show a mine in Dickinson County. *[Menominee Range Historical Museum]*

# PHOTOGRAPHS OF THE MENOMINEE IRON RANGE MINES

*[Compiled and Captioned by William John Cummings]*



This unidentified Iron Mountain mine appears on a linen-surfaced postcard view dating from 1920 to 1930. *[William J. Cummings]*

# PHOTOGRAPHS OF THE MENOMINEE IRON RANGE MINES

*[Compiled and Captioned by William John Cummings]*



This unidentified Iron Mountain mine linen-surfaced postcard view dates between 1920 and 1930. *[William J. Cummings]*

# PHOTOGRAPHS OF THE MENOMINEE IRON RANGE MINES

*[Compiled and Captioned by William John Cummings]*



This unidentified photograph depicting seven miners standing on a slag pile or stock pile, all wearing miner's candlesticks on their mining hats, probably dates between 1890 and 1900. Note the miner at the far right is carrying his lunch pail. This photograph was acquired from Don Khoury, who obtained it from an area estate. *[William J. Cummings]*

# PHOTOGRAPHS OF THE MENOMINEE IRON RANGE MINES

*[Compiled and Captioned by William John Cummings]*



This unused and unidentified real photo postcard view, probably in Dickinson County and possibly C Ludington Shaft of the Chapin Mine, shows a group of twenty-five miners in front of a shaft house with cage and skip openings behind them. The logs in the foreground appear to be prepared for timbering. The miners are wearing carbide lamps on their mining hats and three of the miners kneeling have round or oval lunch pails. The railroad tracks lead to the skip shaft and the cage for the miners to descend and ascend into the mine is at the left. *[William J. Cummings]*

# PHOTOGRAPHS OF THE MENOMINEE IRON RANGE MINES

*[Compiled and Captioned by William John Cummings]*



These twelve miners posed with a sign indicating the 10th level and B. Hotel. Similar to those acquired which might be taken in the Millie Mine, this unused postcard view dates between 1908 and 1920. See the other photographs in the Millie Mine section. These were all acquired by Jim Stearns from a Dickinson County source. *[William J. Cummings]*



# PHOTOGRAPHS OF THE MENOMINEE IRON RANGE MINES

*[Compiled and Captioned by William John Cummings]*



This unidentified miner posed on a piece of mining equipment underground. Note the carbide lamp on his mining hat and the clogged boots. *[William J. Cummings]*

# PHOTOGRAPHS OF THE MENOMINEE IRON RANGE MINES

*[Compiled and Captioned by William John Cummings]*



This unidentified group of miners wearing miner's candlesticks on their mining hats probably dates between 1890 and 1900. Note the huge timbers of the mine shaft at the right.

# PHOTOGRAPHS OF THE MENOMINEE IRON RANGE MINES

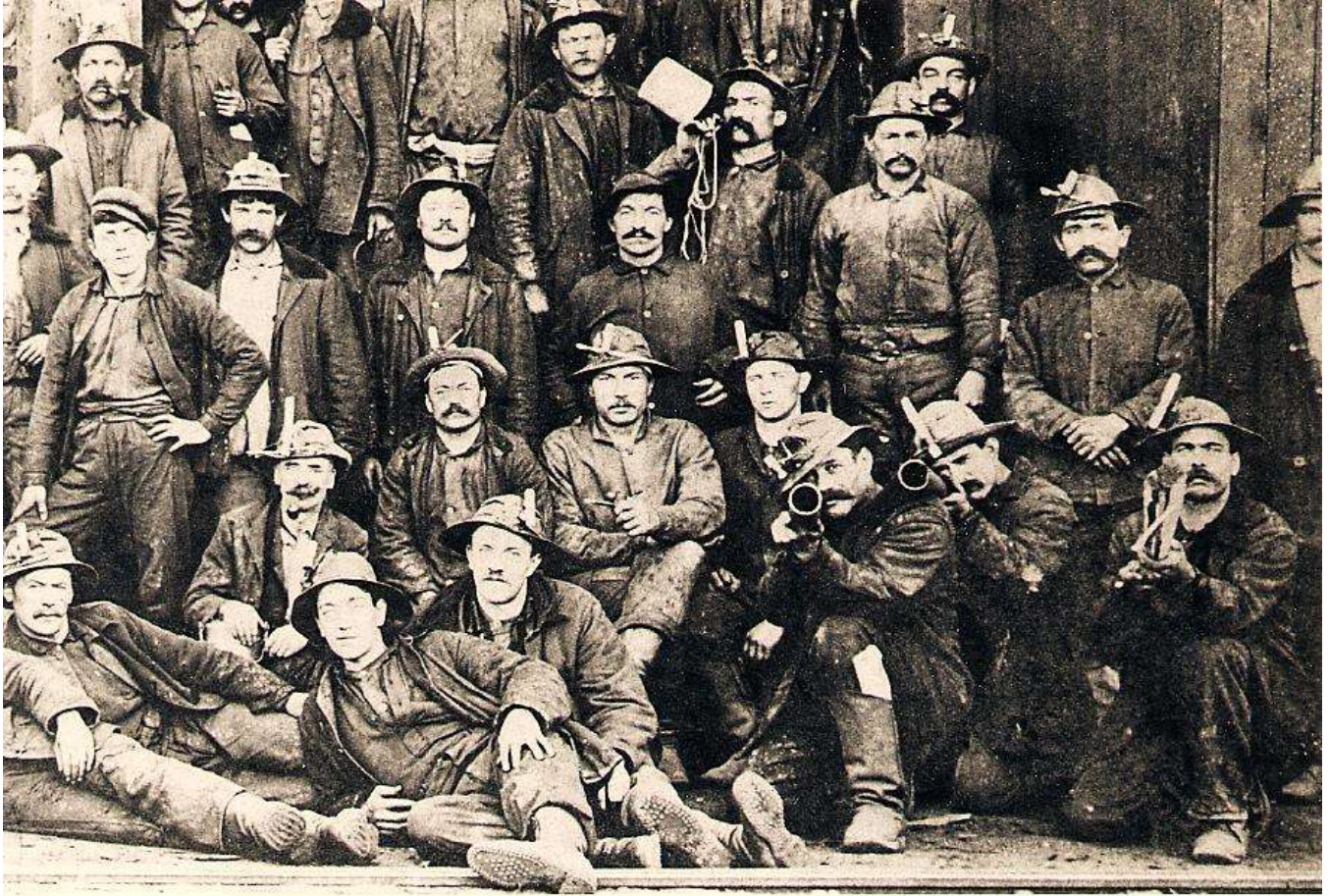
*[Compiled and Captioned by William John Cummings]*



This is a detail of the previous photograph.

# PHOTOGRAPHS OF THE MENOMINEE IRON RANGE MINES

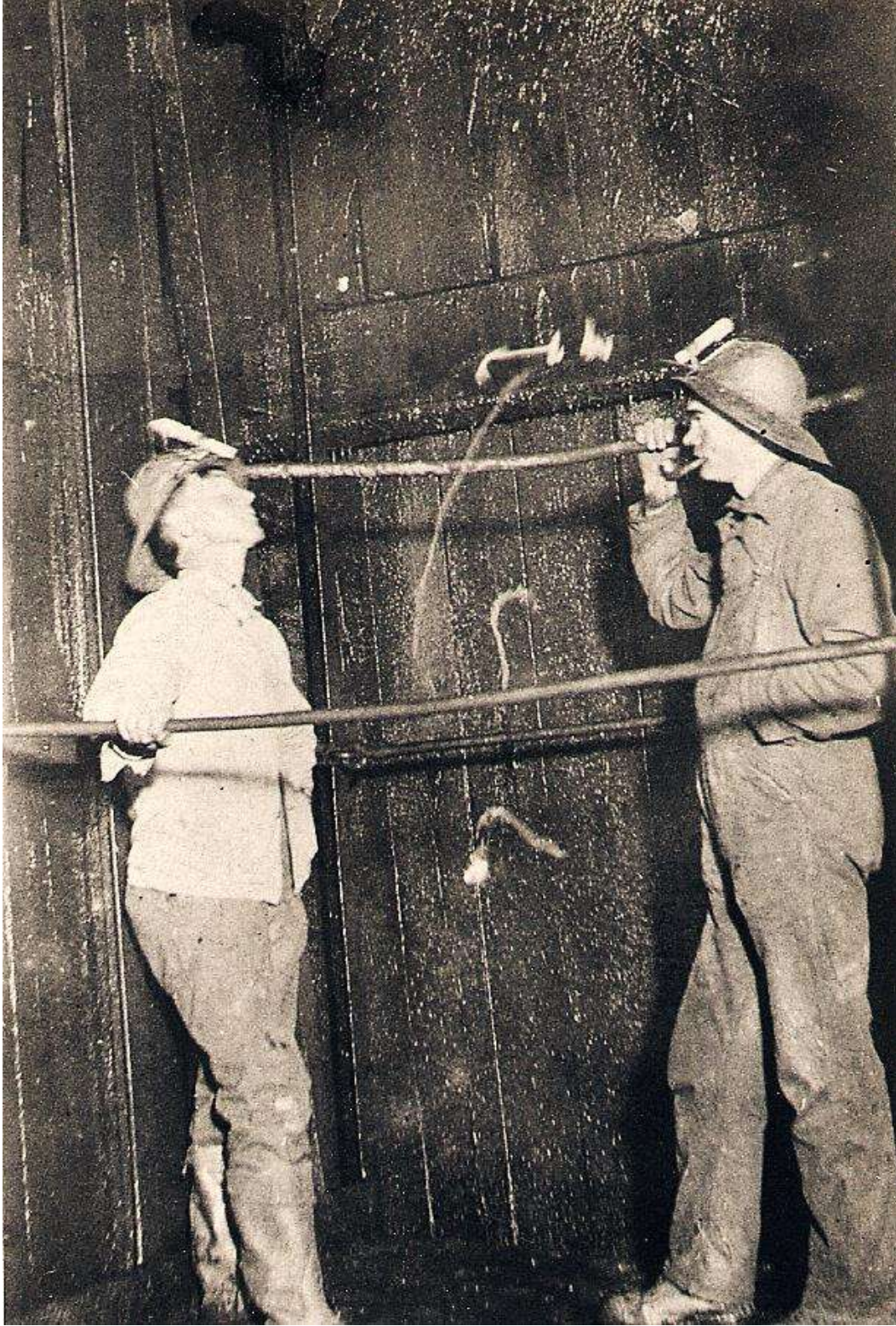
*[Compiled and Captioned by William John Cummings]*



This is a detail of a portion of the above photograph which was not included in the larger, overall view.

# PHOTOGRAPHS OF THE MENOMINEE IRON RANGE MINES

*[Compiled and Captioned by William John Cummings]*



This view shows two men in a cage used to transport miners from the surface into the mine. Note the miners have miner's candlesticks on their mining hats.

# PHOTOGRAPHS OF THE MENOMINEE IRON RANGE MINES

*[Compiled and Captioned by William John Cummings]*

## COMMONWEALTH, WISCONSIN, MINES

### COMMONWEALTH MINE

Section \_\_, Township \_\_ North, Range \_\_ West

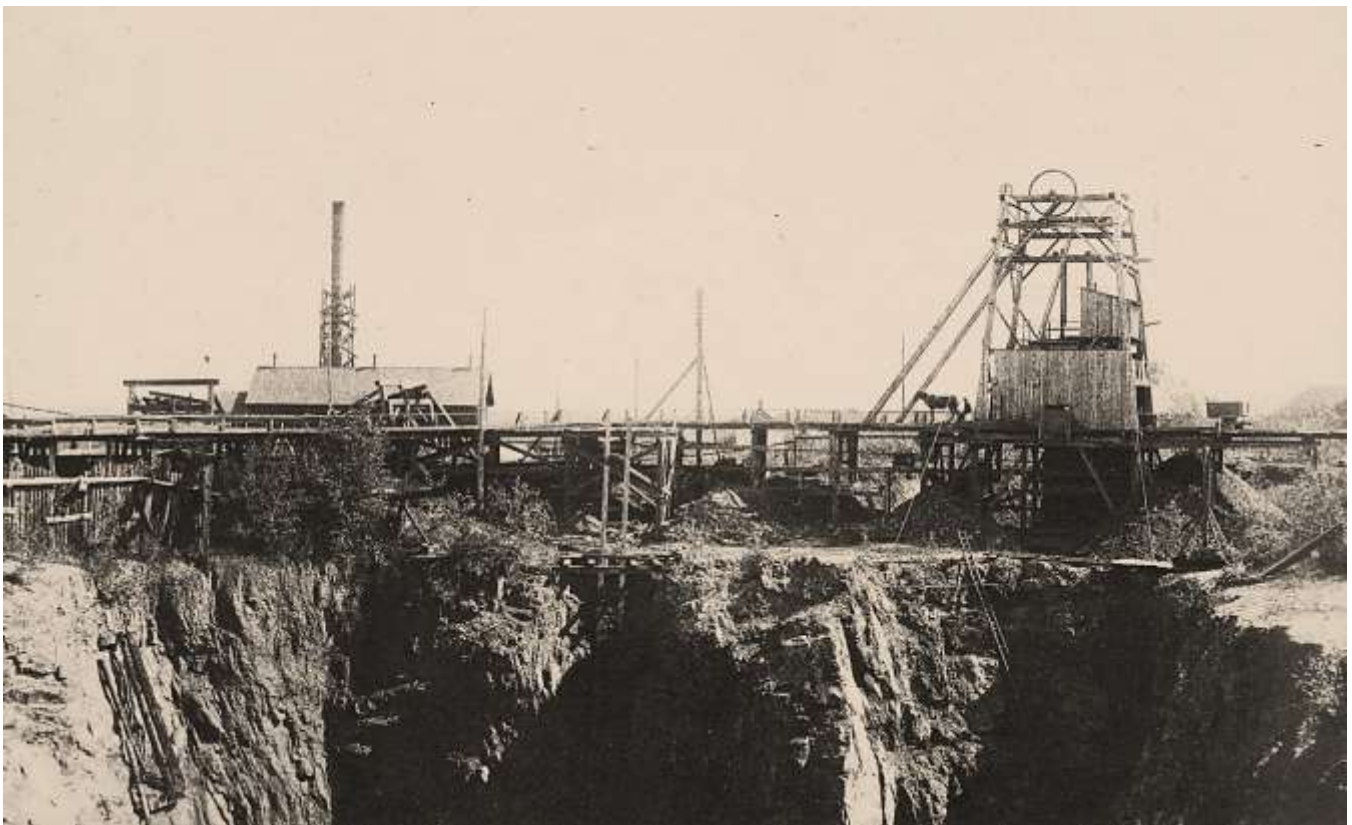
Commonwealth

Discovered:

Opened:

Operator:

Reopened:



This photograph of the Commonwealth Mine was taken by Jorgen J. Eskil, pioneer Menominee Range photographer, in about 1890. Note the horse or mule being used for tramping on the trestle to the left of the mine shaft. *[Menominee Range Historical Museum]*

# PHOTOGRAPHS OF THE MENOMINEE IRON RANGE MINES

*[Compiled and Captioned by William John Cummings]*



This photograph of the Commonwealth Mine, taken by Jorgen J. Eskil, pioneer Menominee Range photographer, in about 1890 shows road leading to the superintendent's residence and the mining office building. *[Menominee Range Historical Museum]*

# PHOTOGRAPHS OF THE MENOMINEE IRON RANGE MINES

*[Compiled and Captioned by William John Cummings]*



This photograph of the Commonwealth Mine, taken by Jorgen J. Eskil, pioneer Menominee Range photographer, in about 1890 shows the mine office building. *[Menominee Range Historical Museum]*



# PHOTOGRAPHS OF THE MENOMINEE IRON RANGE MINES

*[Compiled and Captioned by William John Cummings]*



This photograph of the Commonwealth Mine, taken by Jorgen J. Eskil, pioneer Menominee Range photographer, in about 1890 shows the superintendent's house. *[Menominee Range Historical Museum]*

# PHOTOGRAPHS OF THE MENOMINEE IRON RANGE MINES

*[Compiled and Captioned by William John Cummings]*

## FLORENCE, WISCONSIN, MINES

### **BADGER MINE**

Section \_\_, Township \_\_ North, Range \_\_ West

**Florence**

**Discovered:**

**Opened:**

**Operator:**

**Reopened:**



This photograph of the Badger Mine, taken by Jorgen J. Eskil, pioneer Menominee Range photographer, in about 1890 shows the overall mining operation. *[Menominee Range Historical Museum]*

# PHOTOGRAPHS OF THE MENOMINEE IRON RANGE MINES

*[Compiled and Captioned by William John Cummings]*

## BUCKEYE MINE

Section 33, Township 40 North, Range 18 West

Florence

Discovered:

Opened: 1900

Operator: Reserve Mining Company, Cleveland, Ohio (1914)

Reopened: 1909

## ERNST MINE

N  $\frac{1}{2}$  of NW  $\frac{1}{4}$  and NW  $\frac{1}{4}$  of NE  $\frac{1}{4}$  of Section 27,  
Township 40 North, Range 18 West

Florence

Discovered:

Opened: 1912

Operator: Florence Iron Company of Wisconsin, Florence, Wisconsin (1914)

Reopened:

# PHOTOGRAPHS OF THE MENOMINEE IRON RANGE MINES

*[Compiled and Captioned by William John Cummings]*

## FLORENCE MINE

Sections 20 and 21, Township 40 North, Range 18 West

Florence

Discovered:

Opened: **1880**

Operator: Florence Iron Company of Wisconsin, Florence, Wisconsin (1914)

Reopened:



This photograph possibly of the Florence Mine, taken by Jorgen J. Eskil, pioneer Menominee Range photographer, in about 1890 shows the overall workings of the mine, an open pit operation. *[Menominee Range Historical Museum]*

# PHOTOGRAPHS OF THE MENOMINEE IRON RANGE MINES

*[Compiled and Captioned by William John Cummings]*



This photograph possibly of the Florence Mine, taken by Jorgen J. Eskil, pioneer Menominee Range photographer, in about 1890 shows the overall workings of the mine, an open pit operation. *[Menominee Range Historical Museum]*

# PHOTOGRAPHS OF THE MENOMINEE IRON RANGE MINES

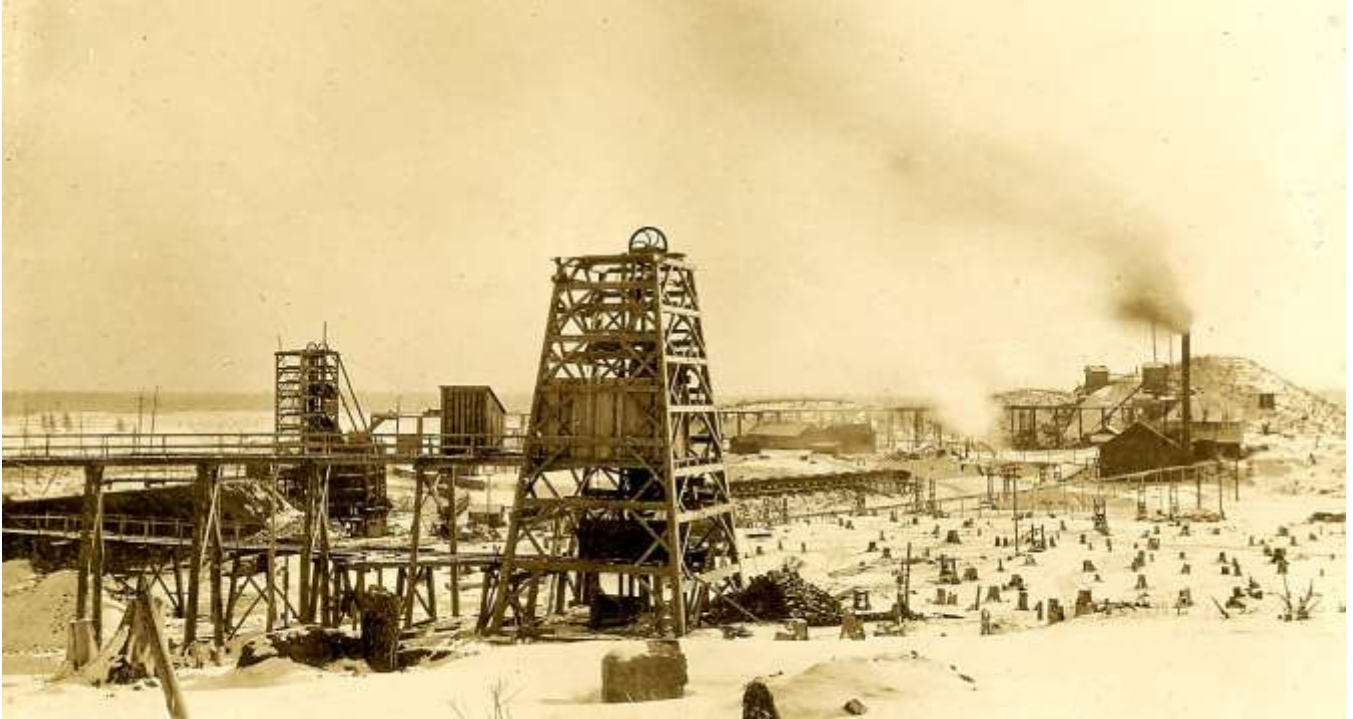
*[Compiled and Captioned by William John Cummings]*



This photograph possibly of the Florence Mine, taken by Jorgen J. Eskil, pioneer Menominee Range photographer, in about 1890 shows the overall workings of the mine, an open pit operation, in winter. *[Menominee Range Historical Museum]*

# PHOTOGRAPHS OF THE MENOMINEE IRON RANGE MINES

*[Compiled and Captioned by William John Cummings]*



This photograph of the Florence Mine, taken by Jorgen J. Eskil, pioneer Menominee Range photographer, in about 1890 shows the overall workings of the mine, an open pit operation, in winter. *[Menominee Range Historical Museum]*

# PHOTOGRAPHS OF THE MENOMINEE IRON RANGE MINES

*[Compiled and Captioned by William John Cummings]*



This photograph possibly of the Florence Mine, taken by Jorgen J. Eskil, pioneer Menominee Range photographer, in about 1890 shows a group of miners with miner's candlesticks on their mining hats posing on a timbered mining structure. *[Menominee Range Historical Museum]*



# PHOTOGRAPHS OF THE MENOMINEE IRON RANGE MINES

[Compiled and Captioned by William John Cummings]

## ALPHA MINES

### UNIDENTIFIED MINE

Section \_\_, Township \_\_ North, Range \_\_ West

Alpha

Discovered:

Opened:

Operator:

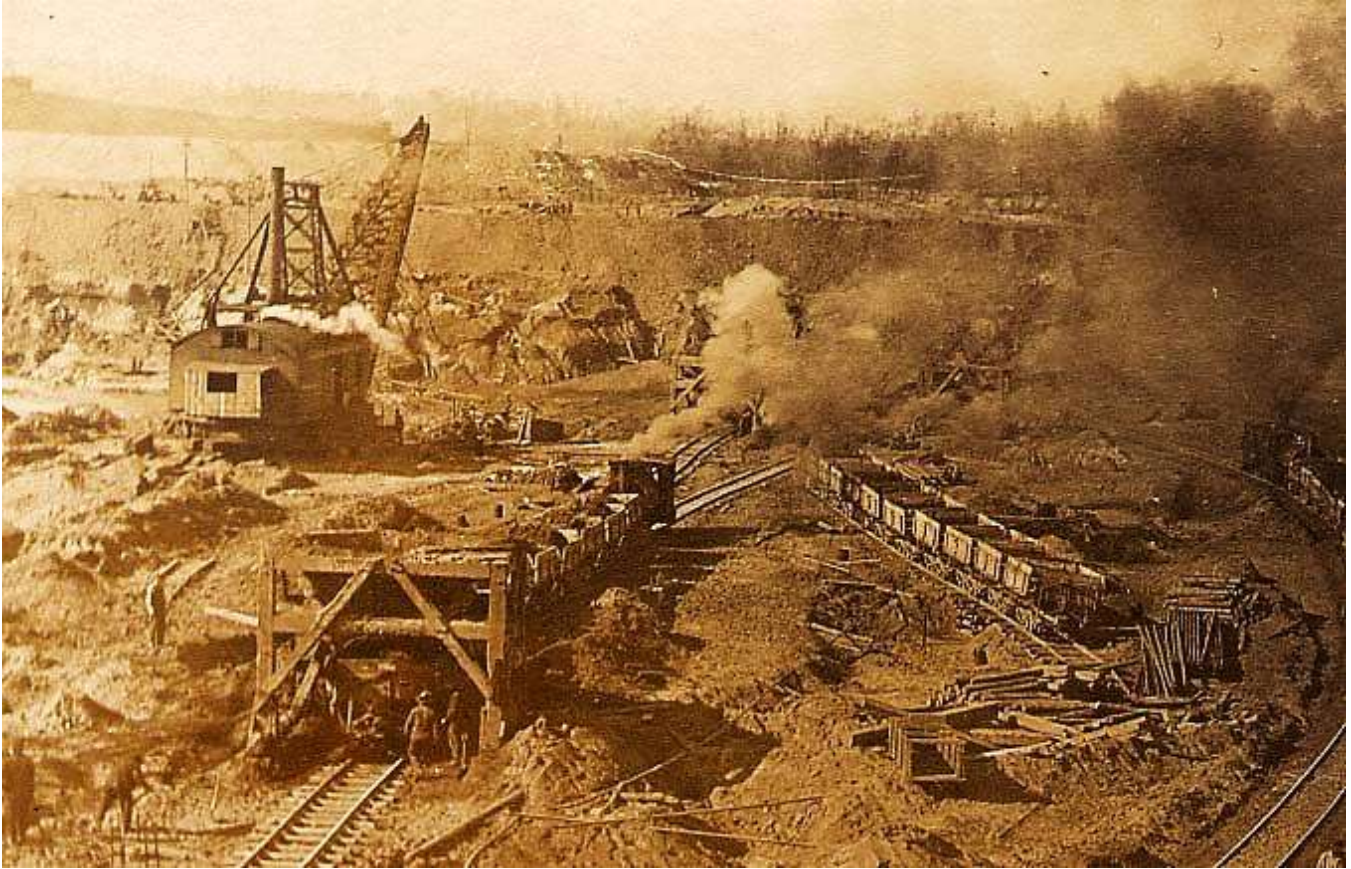
Reopened:



This unused real photo postcard view, dating between 1907 and 1918, shows the pit view of an unidentified mine in Alpha, Mastodon Township. [William J. Cummings]

# PHOTOGRAPHS OF THE MENOMINEE IRON RANGE MINES

*[Compiled and Captioned by William John Cummings]*



This unused real photo postcard view, dating between 1907 and 1918, shows a detail of the previous postcard view of an unidentified mine in Alpha, Mastodon Township. *[William J. Cummings]*

# PHOTOGRAPHS OF THE MENOMINEE IRON RANGE MINES

*[Compiled and Captioned by William John Cummings]*



This unused real photo postcard view, dating between 1907 and 1918, shows another detail of the previous postcard view of an unidentified mine in Alpha, Mastodon Township. *[William J. Cummings]*

# PHOTOGRAPHS OF THE MENOMINEE IRON RANGE MINES

*[Compiled and Captioned by William John Cummings]*

## CRYSTAL FALLS AREA MINES

### **ARMENIA MINE**

Section 23, Township 43 North, Range 32 West

**Crystal Falls**

Discovered:

Opened: **1889**

Operator:

Reopened:

# PHOTOGRAPHS OF THE MENOMINEE IRON RANGE MINES

*[Compiled and Captioned by William John Cummings]*

## **BRISTOL MINE (formerly Claire Mine)**

Section 19, Township 43 North, Range 32 West

**Crystal Falls**

Discovered:

Opened: **1892**

Operator: Bristol Mining Company, Wade Building, Cleveland, Ohio (1914)

Reopened: **1909**



This photograph of the Bristol Mine which opened in 1892 was taken by Jorgen J. Eskil, pioneer Menominee Range photographer, in April, 1899. *[Menominee Range Historical Museum]*

# PHOTOGRAPHS OF THE MENOMINEE IRON RANGE MINES

*[Compiled and Captioned by William John Cummings]*

## **CLAIRE MINE (later Bristol Mine)**

Section 19, Township 43 North, Range 32 West

**Crystal Falls**

Discovered:

Opened: **1892**

Operator: Bristol Mining Company, Wade Building, Cleveland, Ohio (1914)

Reopened: **1909**

# PHOTOGRAPHS OF THE MENOMINEE IRON RANGE MINES

*[Compiled and Captioned by William John Cummings]*

## CARPENTER MINE

Section 31, Township 43 North, Range 32 West

Crystal Falls

Discovered:

Opened: 1914

Operator: Hollister Mining Company, Crystal Falls, Michigan (1914)

Reopened:



Carpenter Mine, Crystal Falls, Mich., Iron Range Studio, Iron River, Mich., c. 1924, (showing Carpenter Mine with shaft house at the right and various mining buildings at left and behind the shaft house at the right), unused (real photo, AZO stamp box with nothing in corners, ca. 1922-1926) [2008 – Walter L. Jung, Lansing, MI -- \$30.65] \$35.00

## CRYSTAL FALLS MINE

Section 21, Township 43 North, Range 32 West

Crystal Falls

Discovered:

Opened: 1882

Operator:

Reopened:

# PHOTOGRAPHS OF THE MENOMINEE IRON RANGE MINES

*[Compiled and Captioned by William John Cummings]*

## DELPHIC MINE

Section \_\_, Township \_\_ North, Range \_\_ West

Crystal Falls

Discovered:

Opened:

Operator:

Reopened:



This photograph of the Delphic Mine, was taken by Jorgen J. Eskil, pioneer Menominee Range photographer, in about 1888. *[Menominee Range Historical Museum]*

## DUNN MINE

Section 1, Township 42 North, Range 33 West

Crystal Falls

Discovered:

Opened: **1887**

Operator:

Reopened:



# PHOTOGRAPHS OF THE MENOMINEE IRON RANGE MINES

*[Compiled and Captioned by William John Cummings]*

## **FAIRBANKS MINE or PAINT RIVER MINE**

Section 20, Township 43 North, Range 32 West

**Crystal Falls**

Discovered:

Opened: **1882**

Operator:

Reopened:

## **FOGARTY MINE**

Section 1, Township 42 North, Range 35 West

**Crystal Falls**

Discovered:

Opened: **1907**

Operator: Verona Mining Company, Cleveland, Ohio (1914)

Reopened:

## **GREAT WESTERN MINE**

Section 21, Township 43 North, Range 32 West

**Crystal Falls**

Discovered:

Opened: **1882**

Operator:

Reopened:

## **HOLLISTER MINE**

N  $\frac{1}{2}$  of NW  $\frac{1}{4}$  and NW  $\frac{1}{4}$  of NE  $\frac{1}{4}$  of Section 22,  
Township 43 North, Range 33 West

**Crystal Falls**

Discovered:

Opened: **1890**

Operator: Hollister Mining Company, Cleveland, Ohio (1914)

Reopened: **1904**

# PHOTOGRAPHS OF THE MENOMINEE IRON RANGE MINES

*[Compiled and Captioned by William John Cummings]*

## HOPE MINE

Section \_\_, Township \_\_ North, Range \_\_ West

Crystal Falls

Discovered:

Opened:

Operator:

Reopened:

## JUDSON MINE

Section 13, Township 43 North, Range 33 West

Crystal Falls

Discovered:

Opened: 1912

Operator: Judson Mining Company, Crystal Falls, Michigan (1914)

Reopened:

## KIMBALL MINE

Section 29, Township 43 North, Range 32 West

Crystal Falls

Discovered:

Opened: 1906

Operator:

Reopened:

## LAMONT MINE

Section 20, Township 43 North, Range 32 West

Crystal Falls

Discovered:

Opened: 1889

Operator:

Reopened:

## LINCOLN MINE

Section 21, Township 43 North, Range 32 West

Crystal Falls

Discovered:

Opened: 1891

Operator:

Reopened:

# PHOTOGRAPHS OF THE MENOMINEE IRON RANGE MINES

*[Compiled and Captioned by William John Cummings]*

## LOT 3 MINE

Section \_\_, Township \_\_ North, Range \_\_ West

Crystal Falls

Discovered:

Opened:

Operator:

Reopened:

## MANSFIELD MINE

Sections 17 and 20, Township 43 North, Range 31 West

Crystal Falls

Discovered:

Opened: 1890

Operator: Oliver Iron Mining Company, Crystal Falls, Michigan (1914)

Reopened:

## MASTODON MINE

Section \_\_, Township \_\_ North, Range \_\_ West

Crystal Falls

Discovered:

Opened:

Operator:

Reopened:

## MONONGAHELA MINE

Section \_\_, Township \_\_ North, Range \_\_ West

Crystal Falls

Discovered:

Opened:

Operator:

Reopened:

## McDONALD MINE

Section 23, Township 43 North, Range 32 West

Crystal Falls

Discovered:

Opened: 1908

Operator:

Reopened:

# PHOTOGRAPHS OF THE MENOMINEE IRON RANGE MINES

*[Compiled and Captioned by William John Cummings]*

## RAVENNA MINE

Section 19, Township 43 North, Range 32 West

Crystal Falls

Discovered:

Opened: 1912

Operator: Hollister Mining Company, Crystal Falls, Michigan (1914)

Reopened:

# PHOTOGRAPHS OF THE MENOMINEE IRON RANGE MINES

*[Compiled and Captioned by William John Cummings]*

## TOBIN MINE

Section 30, Township 43 North, Range 32 West

Crystal Falls

Discovered:

Opened: 1901

Operator:

Reopened:



No. 15 1908 Gen'l View Tobin Mine, Crystal Falls, Mich., (showing overview of mine with shaft and trestle at left and probably engine house at right; William H. Cummings worked at the Tobin Mine shortly after he married Sophia Caroline Pfeiffer) [2012 – Mary Jo - Good Buyz Inc., Piqua, OH – \$21.75] \$25.00

## YOUNGSTOWN MINE

Section \_\_, Township \_\_ North, Range \_\_ West

Crystal Falls

Discovered:

Opened:

Operator:

Reopened:

# PHOTOGRAPHS OF THE MENOMINEE IRON RANGE MINES

[Compiled and Captioned by William John Cummings]

## UNIDENTIFIED MINE

Section \_\_, Township \_\_ North, Range \_\_ West

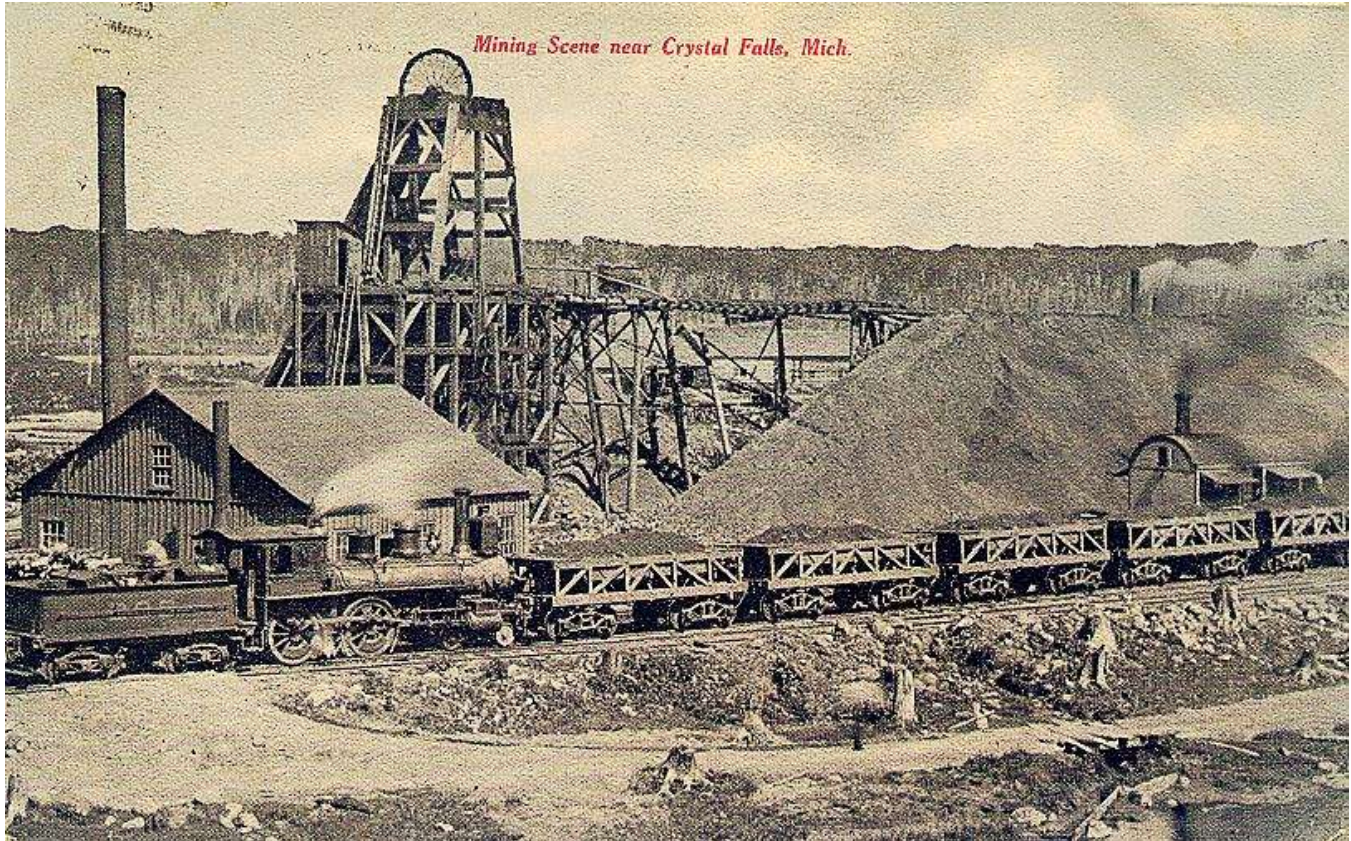
Crystal Falls

Discovered:

Opened:

Operator:

Reopened:



Mining Scene near Crystal Falls, Mich., (showing unidentified mine with train in foreground, power house, shaft housing and stockpiles), postmarked Crystal Falls, September 12, 1907 (black-and-white halftone tinted blue) [xxxx - xxxx - xxxx] \$10.00

# PHOTOGRAPHS OF THE MENOMINEE IRON RANGE MINES

*[Compiled and Captioned by William John Cummings]*



**Iron Mine Near Crystal Falls, Mich. B-1556**, (showing unidentified mine with stockpiles at the left, tramway, shaft housing and other mining buildings), unused (real photo, ca. 1950) [xxxx – xxxx – xxxx] \$7.00

**Mining Scene near Crystal Falls, Mich.**, (showing unidentified mine with train in foreground, power house, shaft housing and stockpiles), postmarked Crystal Falls, September 12, 1907 (black-and-white halftone tinted blue) [xxxx – xxxx – xxxx] \$10.00

# PHOTOGRAPHS OF THE MENOMINEE IRON RANGE MINES

*[Compiled and Captioned by William John Cummings]*



**"Trammers" Pub. for Rezin's Drug Store, Crystal Falls, Mich.,** (showing two trammers inside mine loading ore car with carbide lamps on their hats), postmarked Crystal Falls, April 4, 1922 (real photo) [1990 – A.B.C. Antiques, Green Bay, Wis. -- \$2.10] \$15.00



# PHOTOGRAPHS OF THE MENOMINEE IRON RANGE MINES

[Compiled and Captioned by William John Cummings]

## AMASA AREA MINES

### CHANNING MINE

*N ½ of NW ¼ and NW ¼ of NE ¼ of Section 22,  
Township 39 North, Range 28 West*

*Amasa*

*Discovered: 1866 by Thomas and Bartley Breen*

*Opened: Summer of 1877*

*Operator: Milwaukee Iron Company (1877); Menominee Mining Company (1877); Breen  
Mining Company (1878)*

*Reopened: 1904*

### GIBSON MINE

*Section 15, Township 44 North, Range 33 West*

*Amasa*

*Discovered:*

*Opened: prior to 1892*

*Operator: Rogers-Brown Ore Company, 1515 Corn Exchange Bank Building, Chicago,  
Illinois (1914)*

*Reopened:*

### HEMLOCK MINE

*Section 4, Township 44 North, Range 33 West*

*Amasa*

*Discovered:*

*Opened: 1889*

*Operator: Hemlock River Mining Company, Cleveland, Ohio (1914)*

*Reopened:*

### MICHIGAN MINE

*Section 9, Township 44 North, Range 33 West*

*Amasa*

*Discovered:*

*Opened: 1893*

*Operator: Oliver Iron Mining Company, Amasa, Michigan (1914)*

*Reopened:*

# PHOTOGRAPHS OF THE MENOMINEE IRON RANGE MINES

*[Compiled and Captioned by William John Cummings]*

## IRON RIVER/STAMBAUGH AREA MINES

### **BAKER MINE**

Section 31, Township 43 North, Range 34 West

**Iron River/Stambaugh**

Discovered:

Opened: **1909**

Operator:

Reopened:

### **BALTIC MINE**

Section 7, Township 42 North, Range 34 West

**Iron River/Stambaugh**

Discovered:

Opened: **1901**

Operator: Verona Mining Company, Cleveland, Ohio (1914)

Reopened: **1904**

# PHOTOGRAPHS OF THE MENOMINEE IRON RANGE MINES

*[Compiled and Captioned by William John Cummings]*

## **BATES MINE**

Section 19, Township 43 North, Range 34 West

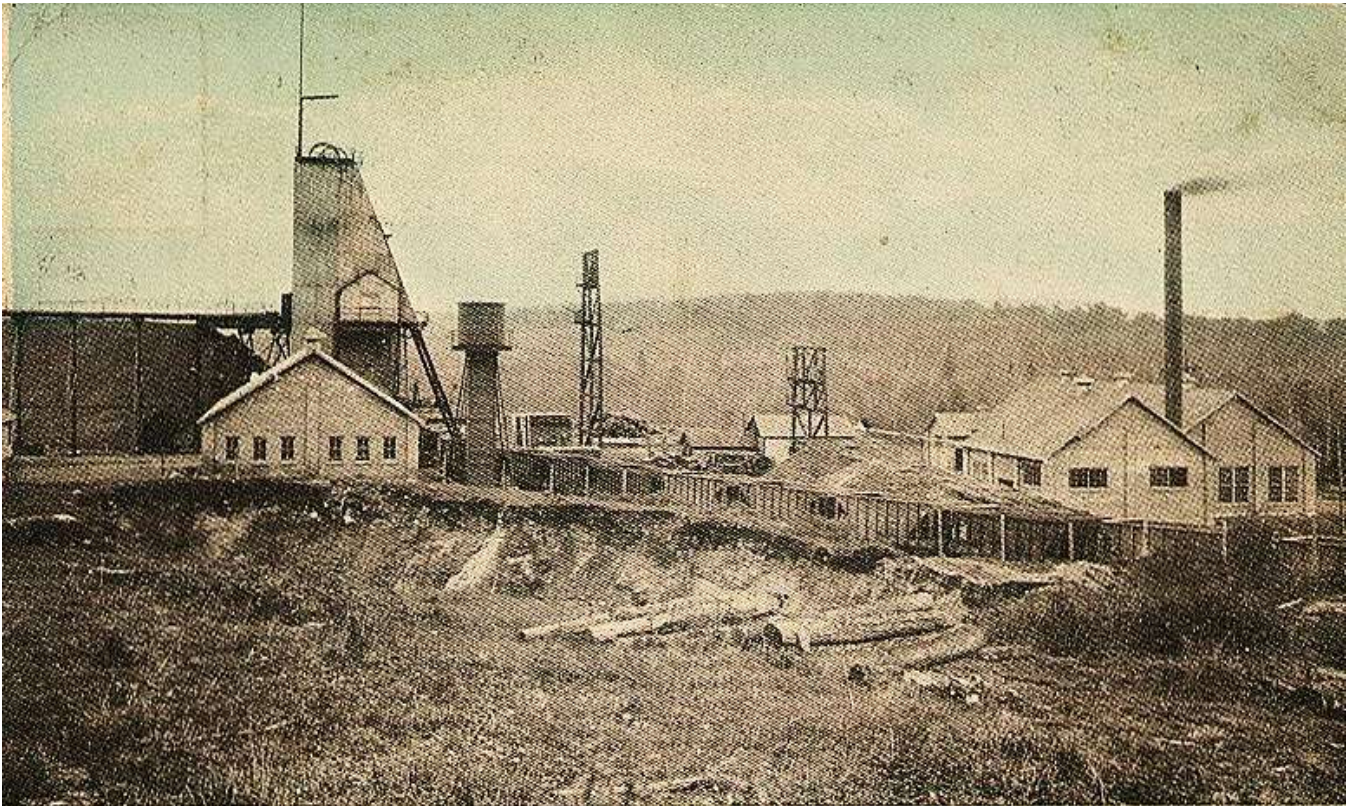
**Iron River**

Discovered:

Opened: **1910**

Operator: **Bates Iron Company, Iron River, Michigan (1914)**

Reopened:



**Bates Mine, Iron River, Mich.**

**Bates Mine, Iron River, Mich.**, (opened in 1910; closed in 1947), unused (black-and-white halftone tinted blue with border, ca. 1920) [1990 – Trade Winds Mall, Watervliet, Mich. -- \$3.50] \$10.00

# PHOTOGRAPHS OF THE MENOMINEE IRON RANGE MINES

*[Compiled and Captioned by William John Cummings]*

## BENGAL MINE

Section 36, Township 43 North, Range 35 West

Stambaugh

Discovered:

Opened: 1913

Operator: Verona Mining Company, Cleveland, Ohio (1914)



# PHOTOGRAPHS OF THE MENOMINEE IRON RANGE MINES

*[Compiled and Captioned by William John Cummings]*

## **BERKSHIRE MINE**

Section 6, Township 42 North, Range 34 West

Iron River/Stambaugh

Discovered:

Opened: **1908**

Operator: Brule Mining Company, Wade Building, Cleveland, Ohio (1914)

## **BETA MINE**

Section \_\_, Township \_\_ North, Range \_\_ West

Iron River/Stambaugh

Discovered:

Opened:

Operator:

Reopened:

# PHOTOGRAPHS OF THE MENOMINEE IRON RANGE MINES

*[Compiled and Captioned by William John Cummings]*

## CHATHAM MINE

Section 35, Township 43 North, Range 35 West

Iron River

Discovered:

Opened: 1907

Operator: Brule Mining Company, Wade Building, Cleveland, Ohio (1914)



Shaft House, Chatham Mine, Iron River, Mich.

Shaft House, Chatham Mine, Iron River, Mich., (showing miners with candlesticks on hats standing in front of shaft house), postmarked Pentoga, Mich., December 11, 1911 (black-and-white halftone) [1992 – Jim Stearns -- \$7.00] \$15.00

# PHOTOGRAPHS OF THE MENOMINEE IRON RANGE MINES

*[Compiled and Captioned by William John Cummings]*

## CHICAGON MINE

Section 26, Township 43 North, Range 34 West

Iron River/Stambaugh

Discovered:

Opened: 1911

Operator: Munro Iron Mining Company, Iron River, Michigan, and Buffalo, New York  
(1914)

Reopened: 1904

## DAVIDSON NO. 1 MINE

Section 23, Township 43 North, Range 35 West

Iron River/Stambaugh

Discovered:

Opened: 1911

Operator: Davidson Ore Mining Company, Buffalo, New York (1914)

Reopened:

## DAVIDSON NO. 2 MINE

Section 14, Township 43 North, Range 35 West

Iron River/Stambaugh

Discovered:

Opened: 1911

Operator: Davidson Ore Mining Company, Buffalo, New York (1914)

Reopened:

# PHOTOGRAPHS OF THE MENOMINEE IRON RANGE MINES

[Compiled and Captioned by William John Cummings]

## DOBER MINE

Section \_\_, Township \_\_ North, Range \_\_ West

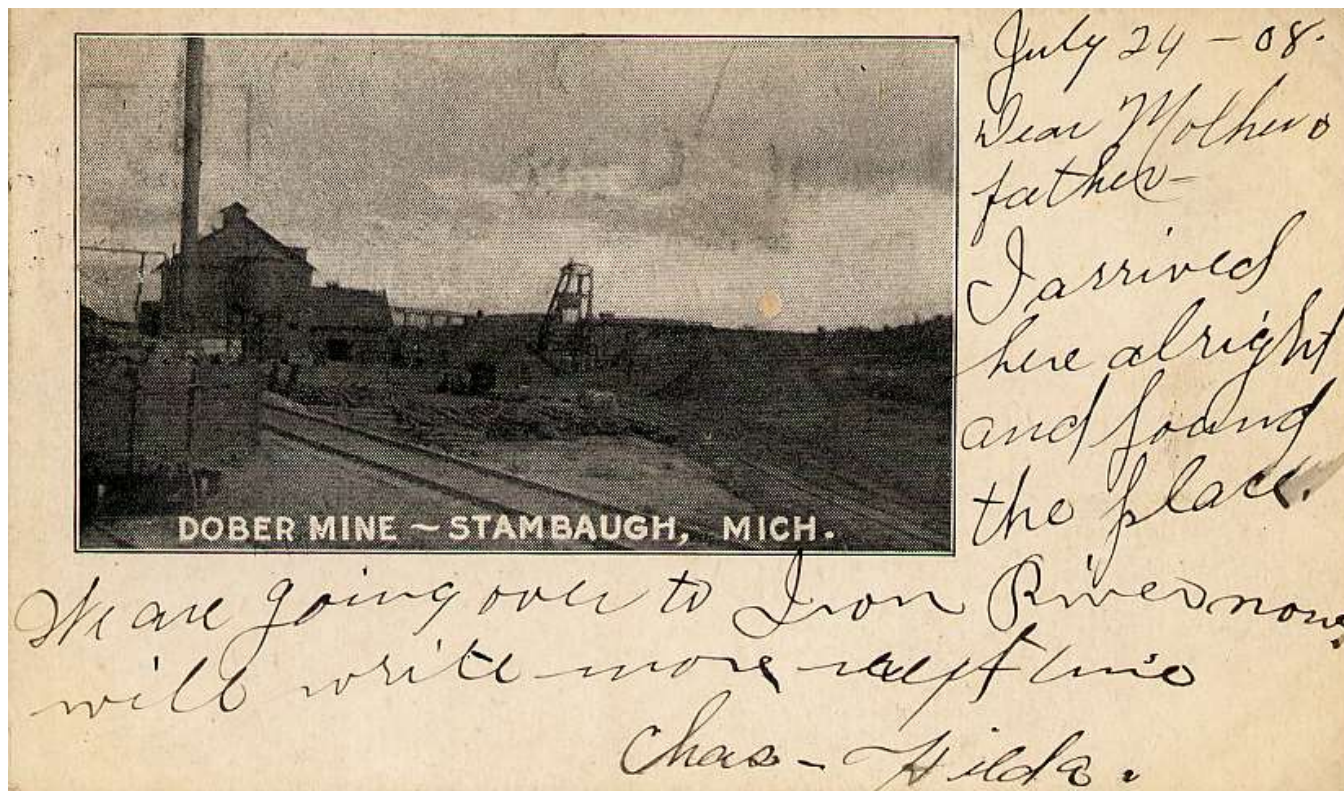
Stambaugh

Discovered:

Opened:

Operator:

Reopened:



Dober Mine, Stambaugh, Mich., (showing Dober Mine with lots of white space for writing message), postmarked Stambaugh, July 25, 1908 (black-and-white halftone with undivided back) [1990 - Josephine Fox -- \$.50] \$10.00

## FOGARTY MINE

N ½ of NW ¼ and NW ¼ of NE ¼ of Section 22,  
Township 39 North, Range 28 West

Iron River/Stambaugh

Discovered: 1866 by Thomas and Bartley Breen

Opened: Summer of 1907

Operator: Verona Mining Company, Cleveland, Ohio (1914)

Reopened:



# PHOTOGRAPHS OF THE MENOMINEE IRON RANGE MINES

*[Compiled and Captioned by William John Cummings]*

## GENESEE MINE

Sections 29, 30 and 31,  
Township 43 North, Range 32 West

Iron River/Stambaugh

Discovered:

Opened: 1902

Operator:

Reopened:

## GLEASON MINE

Section \_\_, Township \_\_ North, Range \_\_ West

Iron River/Stambaugh

Discovered:

Opened:

Operator:

Reopened:

## GOODMAN MINE

Section \_\_, Township \_\_ North, Range \_\_ West

Iron River/Stambaugh

Discovered:

Opened:

Operator:

Reopened:

## HALL MINE

Section \_\_, Township \_\_ North, Range \_\_ West

Iron River/Stambaugh

Discovered:

Opened:

Operator:

Reopened:

# PHOTOGRAPHS OF THE MENOMINEE IRON RANGE MINES

*[Compiled and Captioned by William John Cummings]*

## HIAWATHA MINE

Section 35, Township 43 North, Range 35 West

Iron River/Stambaugh

Discovered:

Opened: **1893**

Operator: Munro Iron Mining Company, Iron River, Michigan, and Buffalo, New York  
(1914)

Reopened: **1908**



The Hiawatha Mine, Iron River, Stambaugh District, Mich., No. 16, Published by A.C. Dietsche, Detroit, Mich., (showing mine shaft and mining location; 1893-1950), unused (black-and-white halftone tinted blue, red and green, ca. 1910) [1994 – Gary Leveille, Great Barrington, Mass. -- \$2.00] \$10.00

# PHOTOGRAPHS OF THE MENOMINEE IRON RANGE MINES

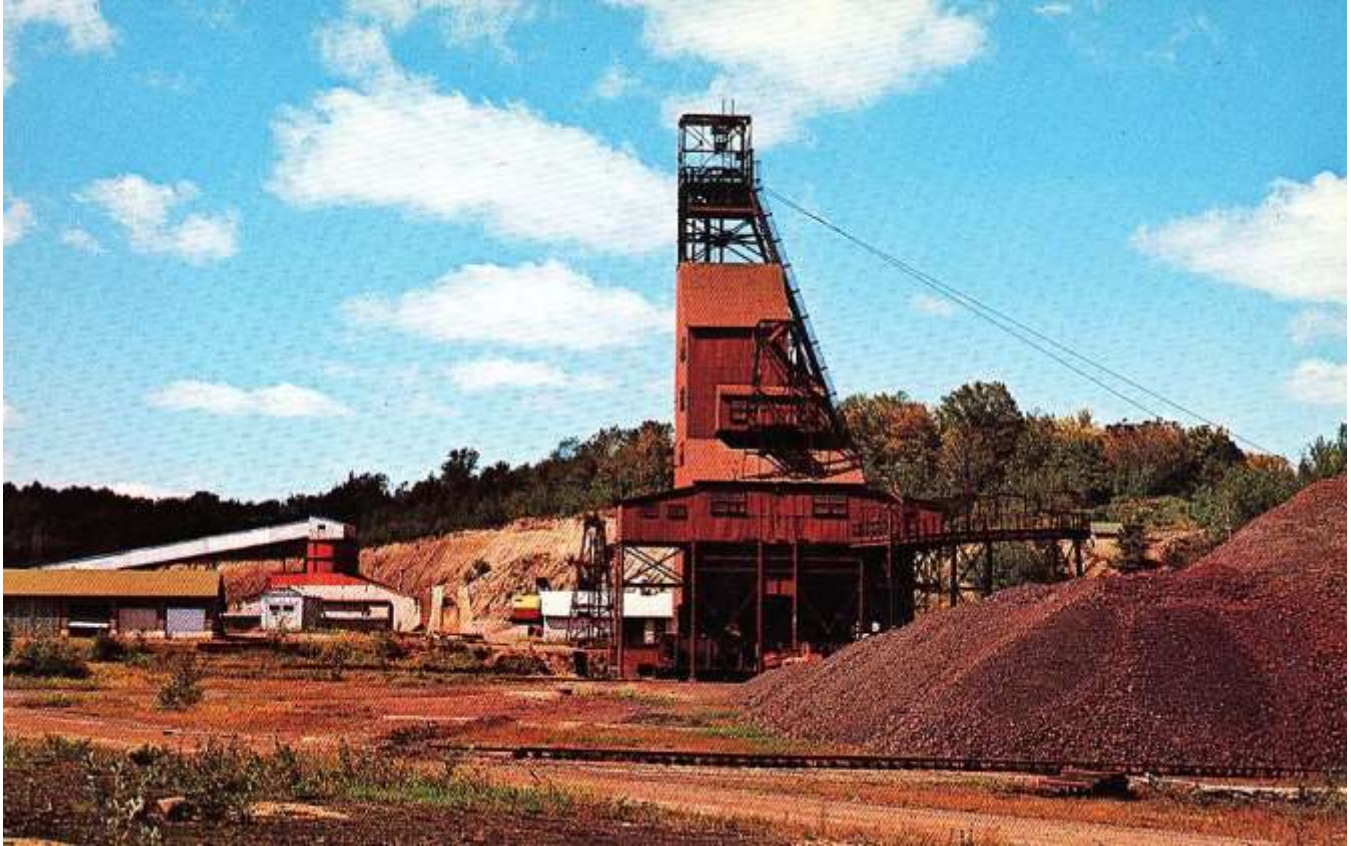
*[Compiled and Captioned by William John Cummings]*



**Hiawatha Mine No. 1, Iron River, Mich. A-2265**, (showing Hiawatha Mine No. 1 with shaft housing, mining buildings, loaded ore cars and stockpiles at extreme left) unused (real photo, EKC 1940-1950) [2013 – Dave Jaeger, Haslett, MI – \$11.95] \$15.00

# PHOTOGRAPHS OF THE MENOMINEE IRON RANGE MINES

*[Compiled and Captioned by William John Cummings]*



**Hiawatha Mine No. 1**, Iron River, Published by the Superior Post Card Co., Ishpeming, Mich., (showing Hiawatha Mine No. 1 – “This underground iron ore mine, located outside of Iron River, Michigan, is typical of the many mines found in the Iron Country. Many mines of this type are being replaced with open pits and pellet plants.”; “Mine where Grandfather Pertroski worked and had accident” written in ink notation on reverse) unused (real photo, color) [2013 – Bob Berger, Chicago, IL – \$4.44] \$5.00

## **HILLTOP AND VICTORIA MINE**

**Section 22, Township 43 North, Range 32 West**

**Iron River/Stambaugh**

**Discovered:**

**Opened: 1912**

**Operator: Cuyahoga Mining Company, Cleveland, Ohio (1914)**

**Reopened:**

# PHOTOGRAPHS OF THE MENOMINEE IRON RANGE MINES

*[Compiled and Captioned by William John Cummings]*

## HOMER WASECA MINE

Section \_\_, Township \_\_ North, Range \_\_ West

Iron River/Stambaugh

Discovered:

Opened:

Operator:

Reopened:

## WASECA MINE (Formerly KONWINSKI MINE)

Section 23, Township 43 North, Range 35 West

Iron River

Discovered:

Opened: 1906

Operator: Mineral Mining Company, Iron Mountain, Michigan (1914)

Reopened:



Homer Wauseca Mine, Iron River, Mich. The shaft is over 2600 feet deep. In Michigan's Upper Peninsula., (showing the Homer Wauseca Mine on a card printed by L.L. Cook Co. 63182, copyright 1963), unused (real photo, color) [2013 – Derrick Proctor, St. Joseph, MI – \$2.75] \$3.00

# PHOTOGRAPHS OF THE MENOMINEE IRON RANGE MINES

*[Compiled and Captioned by William John Cummings]*

## ISABELLA MINE

Section \_\_, Township \_\_ North, Range \_\_ West

Iron River/Stambaugh

Discovered:

Opened:

Operator:

Reopened:

## JAMES MINE

Section \_\_, Township \_\_ North, Range \_\_ West

Iron River/Stambaugh

Discovered:

Opened:

Operator:

Reopened:

## McGILLIS MINE

Section \_\_, Township \_\_ North, Range \_\_ West

Iron River/Stambaugh

Discovered:

Opened:

Operator:

Reopened:

## NANAIMO MINE

Section 26, Township 43 North, Range 35West

Iron River/Stambaugh

Discovered:

Opened: 1882

Operator: Mineral Mining Company, Iron Mountain, Michigan (1914)

Reopened:

## RIVERTON MINE

Section \_\_, Township \_\_ North, Range \_\_ West

Iron River/Stambaugh

Discovered:

Opened:

Operator:

Reopened:

# PHOTOGRAPHS OF THE MENOMINEE IRON RANGE MINES

[Compiled and Captioned by William John Cummings]

## ROGERS MINE

Section 29, Township 43 North, Range 34 West

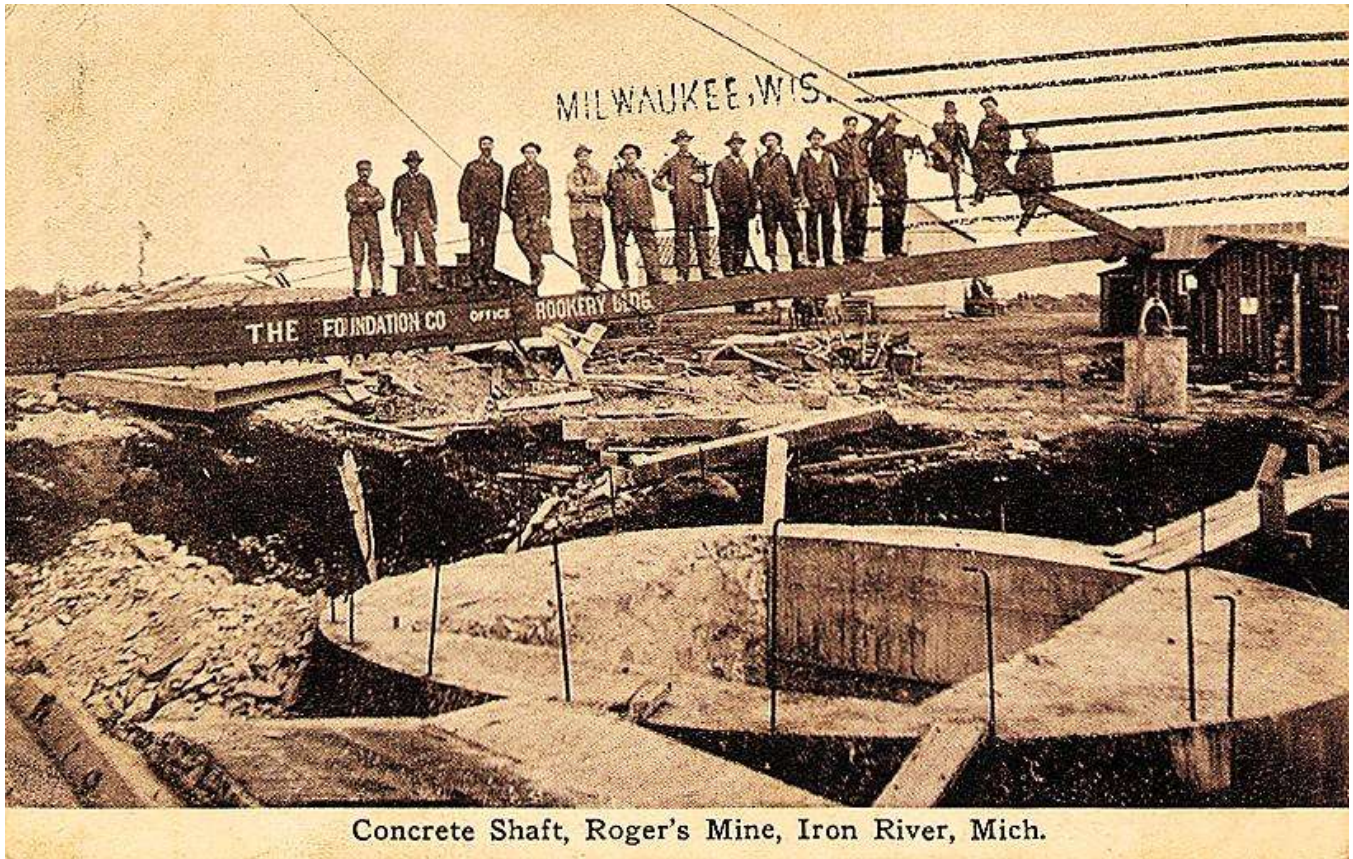
Iron River

Discovered:

Opened: 1913

Operator: Munro Iron Mining Company, Iron River, Michigan, and Buffalo, New York

Reopened:



Concrete Shaft, Roger's Mine, Iron River, Mich.

Concrete Shaft, Roger's Mine, Iron River, Mich., (showing men standing on beam and concrete shaft; 1912-1945), postmarked Mapleton, Mich., August 3, 1912/Milwaukee, Wis. cancellation on front of card (black-and-white halftone) [1994 -- Gary Leveille, Great Barrington, Mass. -- \$2.00] \$10.00

# PHOTOGRAPHS OF THE MENOMINEE IRON RANGE MINES

*[Compiled and Captioned by William John Cummings]*

## SHERIDAN MINE

Section \_\_, Township \_\_ North, Range \_\_ West

Iron River/Stambaugh

Discovered:

Opened:

Operator:

Reopened:

## TULLY MINE

Section 36, Township 43 North, Range 35 West

Iron River/Stambaugh

Discovered:

Opened: 1909

Operator:

Reopened:



# PHOTOGRAPHS OF THE MENOMINEE IRON RANGE MINES

[Compiled and Captioned by William John Cummings]

## WICKWIRE MINE

Section \_\_, Township \_\_ North, Range \_\_ West

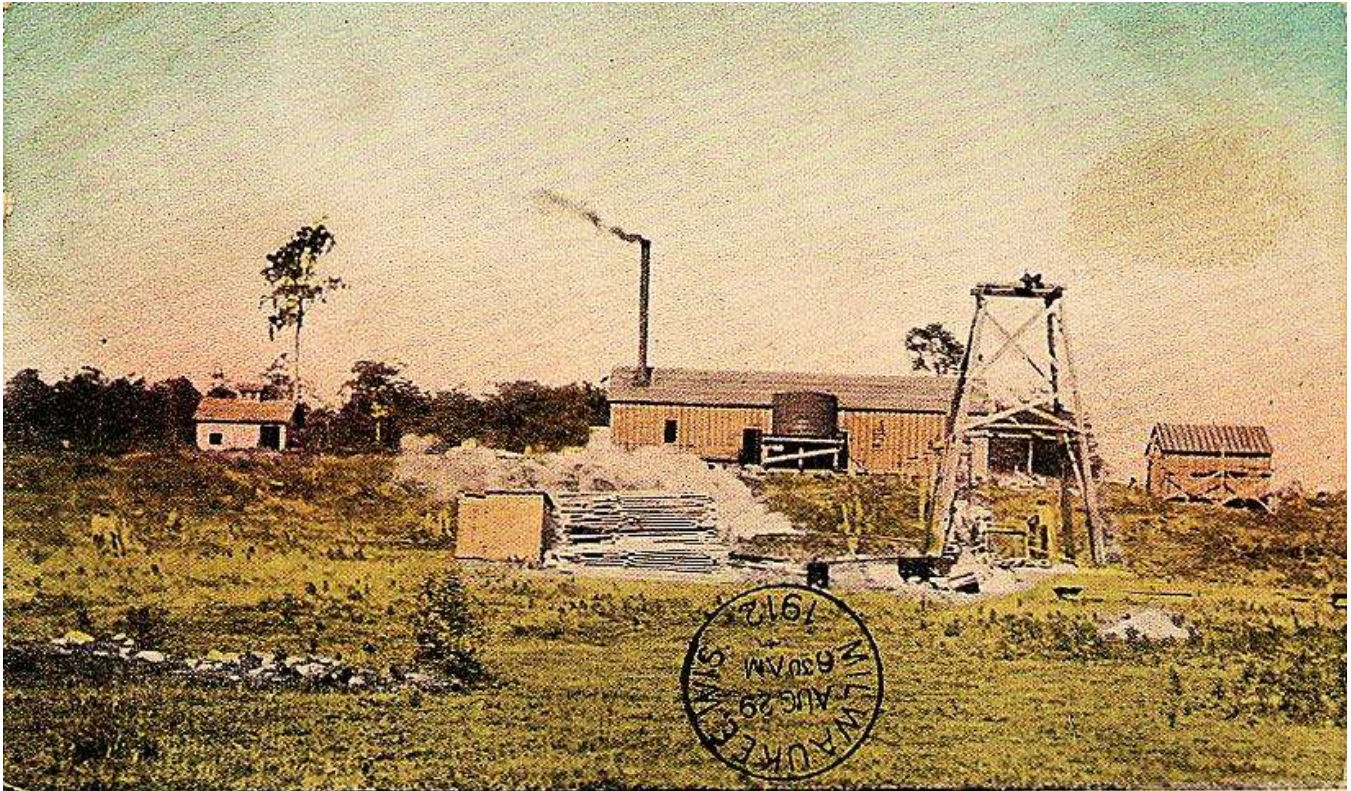
Iron River

Discovered:

Opened:

Operator:

Reopened:



Wickwire Mine, Iron River, Mich.

Wickwire Mine, Iron River, Mich., (showing primitive shaft; 1911-1917), postmarked Mapleton, Mich., August 28, 1912/Milwaukee, Wis., August 29, 1912 on front of card (black-and-white halftone tinted blue, red and green) [1994 – Gary Leveille, Great Barrington, Mass. -- \$1.50] \$10.00

# PHOTOGRAPHS OF THE MENOMINEE IRON RANGE MINES

*[Compiled and Captioned by William John Cummings]*

## YOUNGS MINE

Section 12, Township 42 North, Range 35 West

Iron River/Stambaugh

Discovered:

Opened: 1905

Operator:

Reopened:

# PHOTOGRAPHS OF THE MENOMINEE IRON RANGE MINES

[Compiled and Captioned by William John Cummings]

## UNIDENTIFIED MINE

Section \_\_, Township \_\_ North, Range \_\_ West

Iron River/Stambaugh

Discovered:

Opened:

Operator:

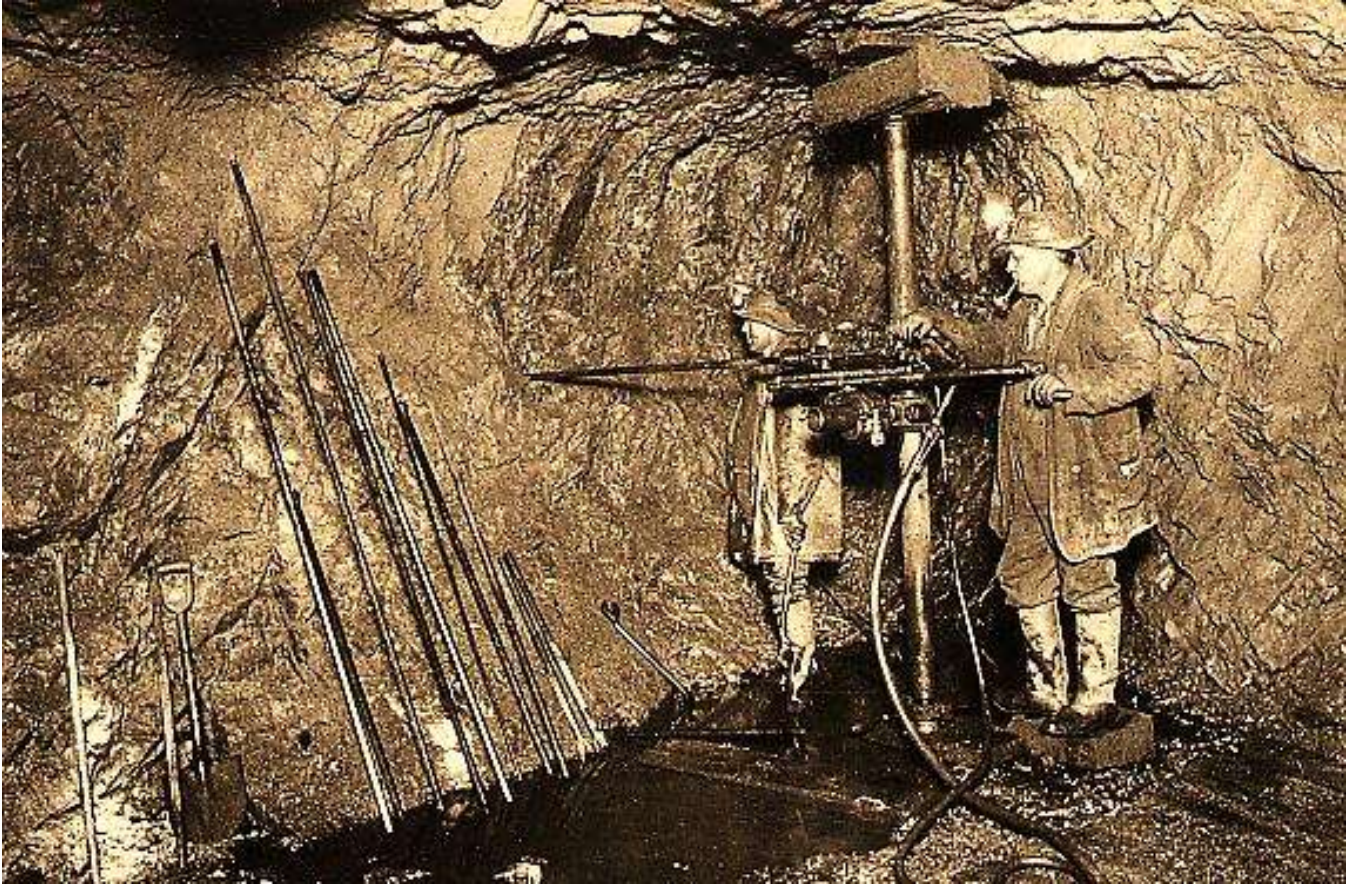
Reopened:



Iron Ore Mining, Copyright Iron Range Studio, Iron River, Mich., (showing two miners using a Rand drill inside an unidentified mine with various drill bits and a shovel leaning against the wall), unused (real photo) [1990 – Trade Winds Mall, Watervliet, Mich. -- \$4.00] \$15.00

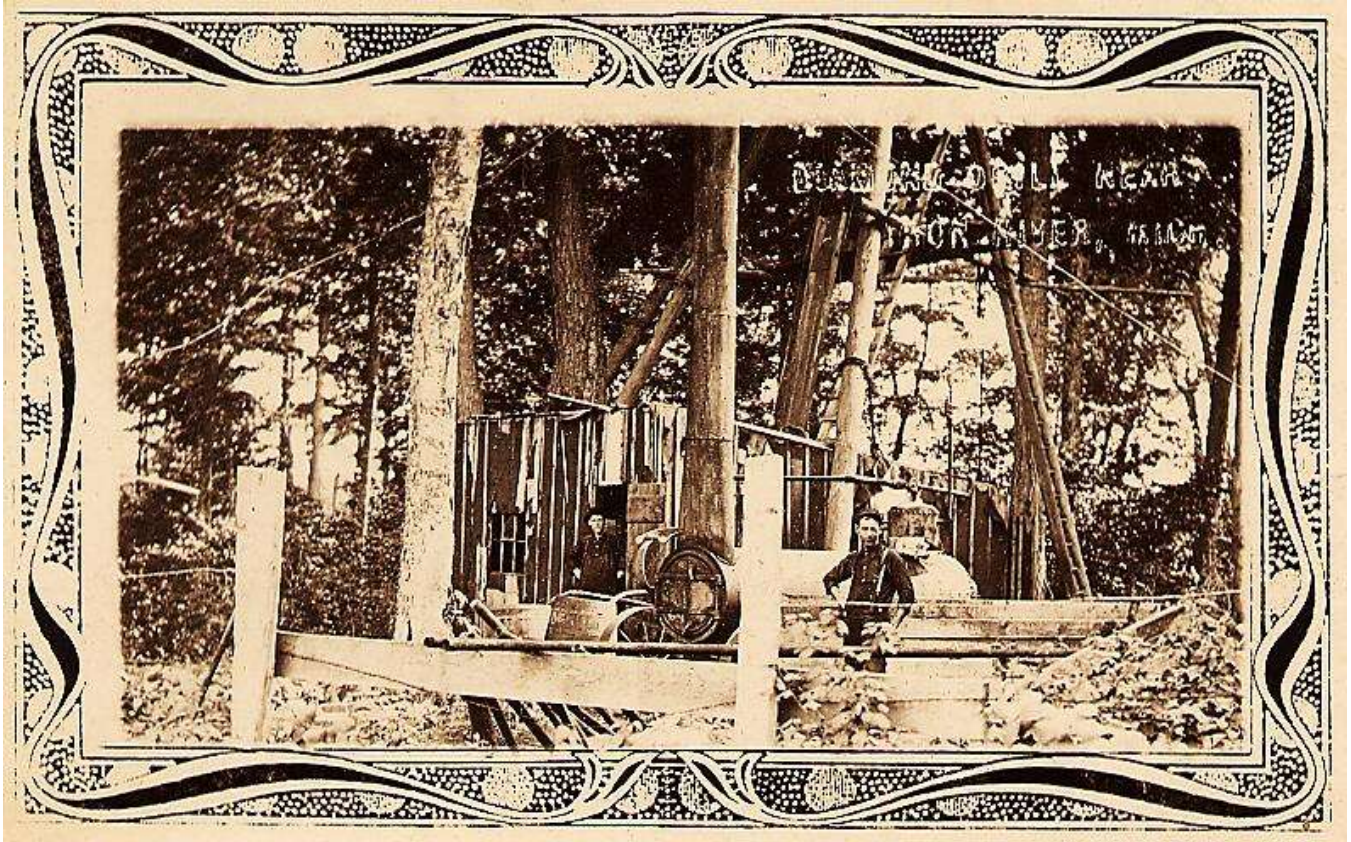
# PHOTOGRAPHS OF THE MENOMINEE IRON RANGE MINES

*[Compiled and Captioned by William John Cummings]*



# PHOTOGRAPHS OF THE MENOMINEE IRON RANGE MINES

*[Compiled and Captioned by William John Cummings]*



**Diamond Drill Near Iron River, Mich.**, (showing two men and a diamond drilling rig with ornate black-and-white border), postmarked Quinnesec, August 31, 1912 (real photo) [1990 – Josephine Fox -- \$.50] \$10.00

# PHOTOGRAPHS OF THE MENOMINEE IRON RANGE MINES

*[Compiled and Captioned by William John Cummings]*

## PALATKA (CASPIAN) MINES

### CASPIAN MINE

Section 1, Township 42 North, Range 35 West

Palatka (Caspian)

Discovered:

Opened: **1903**

Operator: Verona Mining Company, Cleveland, Ohio (1914)

Reopened:



**Caspian Location, Palatka, Mich., No. 12 1908**, (showing the Caspian Location in the distance to the left of a dirt road; partial view of store building at left and mining buildings at right), unused (real photo, ca. 1908) [1989 – Joel Edler, Iola, Wis. -- \$3.15] \$20.00

# PHOTOGRAPHS OF THE MENOMINEE IRON RANGE MINES

*[Compiled and Captioned by William John Cummings]*



**Caspian Mine, Spring Valley, Mich., E. Ammermann, Iron River, Mich.,** (showing shaft housing, trestles and stockpiles; same view as below), postmarked Stambaugh, Mich., August 25, 1909 (black-and-white halftone) [1990 – Josephine Fox -- \$.50] \$12.00

# PHOTOGRAPHS OF THE MENOMINEE IRON RANGE MINES

*[Compiled and Captioned by William John Cummings]*



**The Caspian, Iron River District, Mich.,** (showing the shaft housing, trestle and stockpiles; same view as above), postmarked Powers, Mich., March 4, 1911 (black-and-white halftone tinted blue and pink) [1994 – Jim Stearns -- \$7.50] \$12.00



# PHOTOGRAPHS OF THE MENOMINEE IRON RANGE MINES

*[Compiled and Captioned by William John Cummings]*



**Club House, Palatka, Mich. 17712**, (showing clubhouse building and addressed to John G. Stephens, Randville, Mich., c/o the Groveland Mine; two corners bent), postmarked Palatka, January 25, 1913 (real photo) [1995 – Village Vendor and Ragamuffins, Plover, Wis. -- \$1.00] \$15.

# PHOTOGRAPHS OF THE MENOMINEE IRON RANGE MINES

*[Compiled and Captioned by William John Cummings]*

## SMUGGLER MINE

Section \_\_, Township \_\_ North, Range \_\_ West

Palatka (Caspian)

Discovered:

Opened:

Operator:

Reopened:



**Smuggler Mine, Palatka, Mich., No. 6 1908**, (showing the Smuggler Mine with shaft housing and various mining buildings),  
postmarked Palatka, April 25, 1910 (real photo) [1990 – Josephine Fox -- \$.50] \$25.00

# PHOTOGRAPHS OF THE MENOMINEE IRON RANGE MINES

*[Compiled and Captioned by William John Cummings]*



**Smuggler Water Wagon, Palatka, Mich., No. 13 1908**, (showing water wagon used for the Smuggler Mine in foreground at left and three boys, one on a bicycle toward the center with residence-type building on hill at right), postmarked Palatka, May 5, 1909 [1990 – Josephine Fox -- \$.50] \$25.00

## **ZIMMERMAN MINE**

**Section 7, Township 42 North, Range 34 West**

**Palatka (Caspian)**

**Discovered:**

**Opened: 1908**

**Operator: Spring Valley Iron Company, Wellston, Ohio (1914)**

**Reopened:**