

PHOTOGRAPHS OF KINGSFORD, DICKINSON COUNTY, MICHIGAN
[Compiled and Captioned by William John Cummings]

KINGSFORD – FORD MOTOR COMPANY PLANT

KINGSFORD

Chartered as a village December 29, 1923; chartered as a city August 5, 1947; named for Edward G. Kingsford, real estate agent and Ford dealer, married to Minnie Flaherty, cousin of Henry Ford I; Ford commissioned Kingsford to find a site upon which to establish an automobile plant in the Upper Peninsula which was located south of Iron Mountain.

VILLAGE AND CITY OF KINGSFORD OFFICES



Kingsford City Hall, Southeast Corner of Carpenter Avenue and Hamilton Avenue, Kingsford, ca. 1940-1950: The Village of Kingsford began operations in its new office building on the southeast corner of the intersection of Carpenter Avenue and Hamilton Avenue on Monday, November 24, 1930. Prior to that time, village business was conducted in a couple of rooms in the basement of the Woodward Avenue School which were rented by the village at \$10 per month. A village warehouse and garage were constructed in conjunction with the village hall. *[City of Kingsford]*

PHOTOGRAPHS OF KINGSFORD, DICKINSON COUNTY, MICHIGAN

[Compiled and Captioned by William John Cummings]



Kingsford City Hall, Southeast Corner of Carpenter Avenue and Hamilton Avenue, Kingsford, ca. 1940-1950: The Village of Kingsford began operations in its new office building on the southeast corner of the intersection of Carpenter Avenue and Hamilton Avenue on Monday, November 24, 1930. Prior to that time, village business was conducted in a couple of rooms in the basement of the Woodward Avenue School which were rented by the village at \$10 per month. A village warehouse and garage were constructed in conjunction with the village hall. *[William John Cummings]*

PHOTOGRAPHS OF KINGSFORD, DICKINSON COUNTY, MICHIGAN
[Compiled and Captioned by William John Cummings]



Kingsford City Hall, Southeast Corner of Carpenter Avenue and Hamilton Avenue, Kingsford, ca. 1940-1950: The Village of Kingsford began operations in its new office building on the southeast corner of the intersection of Carpenter Avenue and Hamilton Avenue on Monday, November 24, 1930. Prior to that time, village business was conducted in a couple of rooms in the basement of the Woodward Avenue School which were rented by the village at \$10 per month. A village warehouse and garage were constructed in conjunction with the village hall. [City of Kingsford]

PHOTOGRAPHS OF KINGSFORD, DICKINSON COUNTY, MICHIGAN

[Compiled and Captioned by William John Cummings]

FORD ADDITION



Ford Addition, Looking North from the Ford Plant, Kingsford, ca. 1925-1930: Taken looking to the northeast, this view of Kingsford's Ford Addition in the mid-1920's includes the Ford water tower and the filtration plant, located on the southwest corner of Woodward Avenue and North Boulevard. G.A. Gustafson of Iron Mountain was awarded the contract for the filtration plant on August 2, 1922, with a bid of \$20,000. Work began five days later and the filtration plant was available for use by September 7, 1923. However, the plant was not put into operation until October. Menominee River water was used, supplying the Ford Plant complex, the Ford Addition and Kingsford Heights with drinking water. A second water tower, located in the center of the plant proper, supplied water for plant use but not for drinking. Construction on the houses shown here in the upper Ford Addition began in mid-May, 1924. Placed 24 to a block and kept in good repair by a crew of men employed by the Ford Motor Company for that purpose, the homes had electric lights, indoor bathrooms and were wired for a telephone. Most had three rooms downstairs, three rooms upstairs and a large cement basement. Some had five rooms, three on the ground floor and two upstairs. The smaller bungalows had five small rooms. Prices ranged from \$3,500 to \$5,500. A block-and-a-half square situated between Woodward Avenue and Hamilton Avenue was left for a park in the 600 block. In 1928 the park was equipped with tables, benches and garbage cans. A bandstand was erected in 1929, and a concert was held every Wednesday evening during the summer months. A cinder path was added in 1930 and tennis courts were also added. [Menominee Range Historical Museum]

PHOTOGRAPHS OF KINGSFORD, DICKINSON COUNTY, MICHIGAN
[Compiled and Captioned by William John Cummings]



Ford Addition, East End of Hamilton Avenue, Looking West from the Kingsford Village Hall, Kingsford, ca. 1925-1930:

PHOTOGRAPHS OF KINGSFORD, DICKINSON COUNTY, MICHIGAN

[Compiled and Captioned by William John Cummings]



Ford Addition, 700 and 800 Blocks of Woodward Avenue, Looking West, Kingsford, ca. 1925-1930: Located on the 700 block of Woodward Avenue, the Ford Clubhouse, the three-story white frame building, was completed in late May, 1925, for use as headquarters for visiting officials. The house on the corner of Woodward Avenue and Ripley Avenue was the Joseph Mongrain farmhouse. Woodward Avenue had not been paved when this photograph was taken. The water tower in the distance was located west of the filtration plant and held the village's potable water supply. [Menominee Range Historical Museum]

PHOTOGRAPHS OF KINGSFORD, DICKINSON COUNTY, MICHIGAN

[Compiled and Captioned by William John Cummings]



Mongrain Farm House and Ford Club House, East End of the 700 Block of Woodward Avenue, Ford Addition, Kingsford, ca. 1925-1930: Located on the 700 block of Woodward Avenue, the Ford Clubhouse, the three-story white frame building, was completed in late May, 1925, for use as headquarters for visiting officials. The house on the corner of Woodward Avenue and Ripley Avenue was the Joseph Mongrain farmhouse. This detail shows the brick farmhouse constructed by Joseph Mongrain and located on his farm. *[Menominee Range Historical Museum]*

PHOTOGRAPHS OF KINGSFORD, DICKINSON COUNTY, MICHIGAN

[Compiled and Captioned by William John Cummings]



Ford Addition, 700 and 800 Blocks of Cass Avenue, Looking West, Kingsford, ca. 1925-1930: This view, taken by E.S. "Andy" Anderson in the late 1920's, looks west along the 800 block of Cass Avenue in Kingsford's Ford Addition. Note the maple trees which were planted on each lot line and also the unpaved road. The Ford water tower on Woodward Avenue is visible at the upper right. *[Dick Massicotte]*

PHOTOGRAPHS OF KINGSFORD, DICKINSON COUNTY, MICHIGAN
[Compiled and Captioned by William John Cummings]



xxx, xxx and xxx Cass Avenue, Ford Addition, Kingsford, ca. 1925-1930:

PHOTOGRAPHS OF KINGSFORD, DICKINSON COUNTY, MICHIGAN

[Compiled and Captioned by William John Cummings]



Triangle Gas Station, Southwest Corner of Carpenter Avenue and Cass Avenue, Ford Addition, Kingsford, ca. 1925: The Triangle Filling Station, located at the southwest corner of Carpenter Avenue and Cass Avenue, opened just before Christmas, 1925. Owned by Edward S. "Ted" Kingsford and James Stillwell, the station's exterior was built in the Tudor or Old English architectural style and was quite unique. Note the three early gasoline pumps. The attendant pumped the gasoline into the glass cylinder at the top of the pump by hand, using a lever near the base of the pump. Then the gasoline was drained through the hose into the tank of the automobile. Houses along the south side of lower Cass Avenue can be seen at the right. [Menominee Range Historical Museum]

The Triangle Filling Station, located at the southwest corner of Carpenter Avenue and Cass Avenue, opened just before Christmas, 1925. Owned by Edward S. "Ted" Kingsford and James Stillwell, the station's exterior was built in the Tudor or Old English architectural style. Note the three early gasoline pumps. The attendant pumped the gasoline into the glass cylinder at the top of the pump by hand, using a lever near the base of the pump. Then the gasoline was drained through the hose into the tank of the automobile. Houses along the south side of lower Cass Avenue can be seen at the right. Men in the picture are Tracy Wales (left) and Jimmy Thomas (right). [Menominee Range Historical Museum] **[K, p. 247; 5x7]**

PHOTOGRAPHS OF KINGSFORD, DICKINSON COUNTY, MICHIGAN
[Compiled and Captioned by William John Cummings]



Kingsford Drug Store Interior, Woodward Avenue, Ford Addition, Kingsford, ca. 1940-1950:

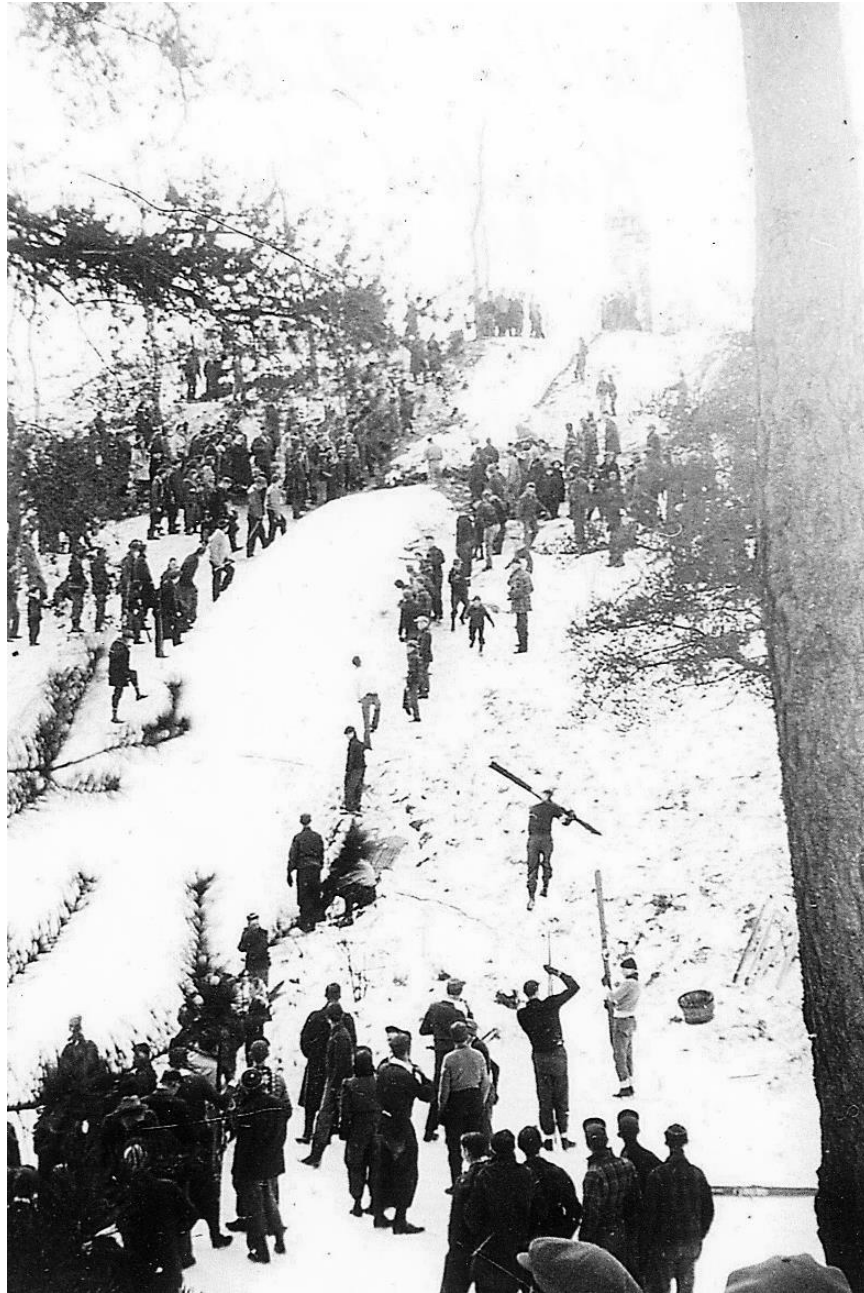
PHOTOGRAPHS OF KINGSFORD, DICKINSON COUNTY, MICHIGAN
[Compiled and Captioned by William John Cummings]

KINGSFORD HEIGHTS



Williams' Grocery Store, Northwest Corner of Woodward Avenue and _____ Avenue, Kingsford Heights, Kingsford, ca. 1925-1930:

PHOTOGRAPHS OF KINGSFORD, DICKINSON COUNTY, MICHIGAN
[Compiled and Captioned by William John Cummings]



Toboggan Slide, South of Woodward Avenue, Kingsford Heights, Kingsford, ca. 1940:

BREITUNG

BREITUNG

350 YARDS SOUTH OF THE
FORD PLANT

Lots 50ft. by 125ft. near the Greatest Enterprise North-
ern Michigan has ever known for \$200.

CAN YOU BEAT IT

ONLY 192 LOTS TO BE SOLD!

They Will Go Fast.

Make Your Reservation NOW.

**REMEMBER:--Breitung is high and Dry and flat as a
board. BREITUNG has a greater prospect for a
future than any other place we know.**

Call at our office and Salemen will show you
BREITUNG

J. A. MINNEAR & CO.

Licensed REAL ESTATE Operators.

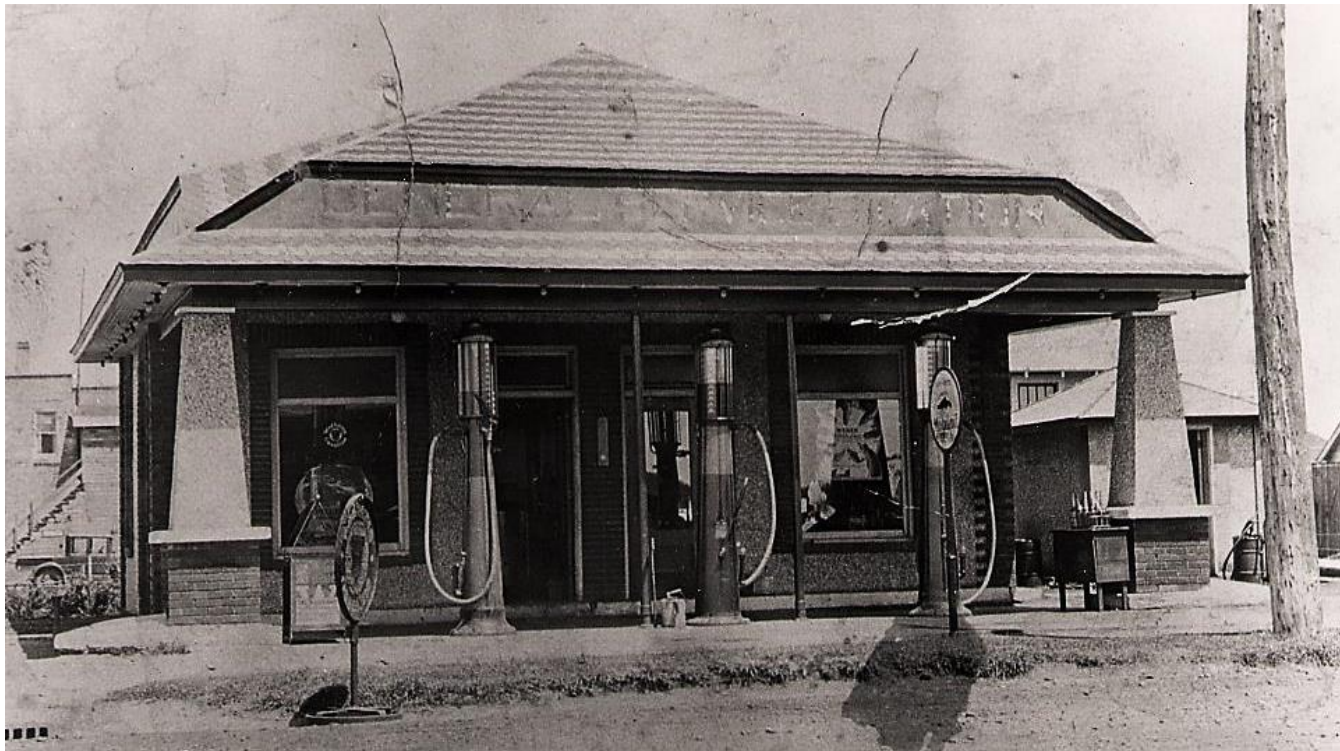
201 E. Ludington St.

Phone 400

Iron Mountain, Mich.

*J.A. Minnear & Company advertised lots for sale in Breitung near the Ford Plant in the August 26, 1920, edition
of the Iron Mountain Press.*

PHOTOGRAPHS OF KINGSFORD, DICKINSON COUNTY, MICHIGAN
[Compiled and Captioned by William John Cummings]



Marcelini's Gas Station, xxxxx, Breitung, Kingsford, ca. 1922:

EAST KINGSFORD

PHOTOGRAPHS OF KINGSFORD, DICKINSON COUNTY, MICHIGAN
[Compiled and Captioned by William John Cummings]

CHURCHES



St. Mary Queen of Peace Catholic Church, xxxxx, Kingsford Heights, Kingsford, ca. 1940-1950:

PHOTOGRAPHS OF KINGSFORD, DICKINSON COUNTY, MICHIGAN
[Compiled and Captioned by William John Cummings]

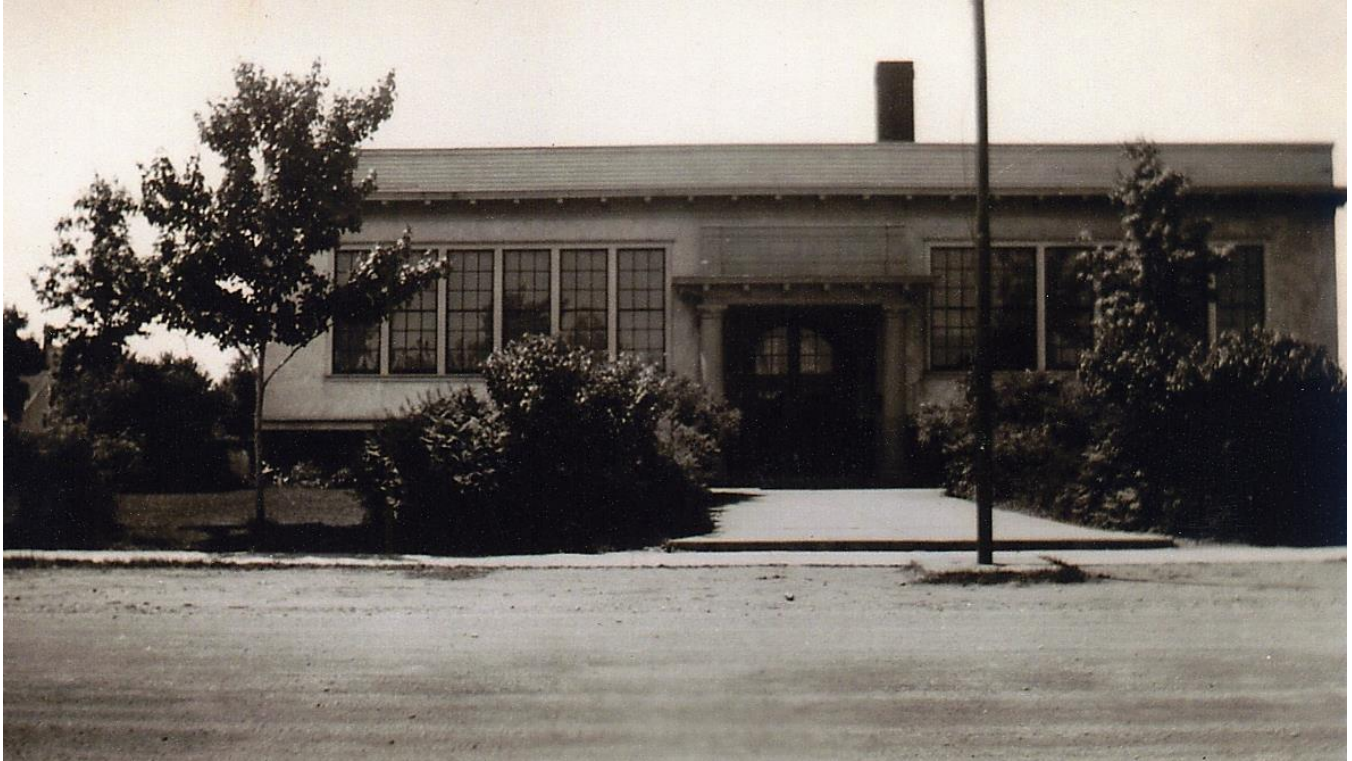
BREITUNG TOWNSHIP SCHOOLS – KINGSFORD



Woodward Avenue School, South Side of Woodward Avenue Near Intersection with Harding Avenue, Kingsford Heights, Kingsford, ca. 1945: The four-room Woodward Avenue or Kingsford Heights School, constructed on the south side of Woodward Avenue near the intersection with Harding Avenue at a cost of \$34,235.25, was opened in January, 1923. Each room would accommodate 40 pupils, giving the school a capacity of 160. After the Village of Kingsford was formed, the village offices were housed in a couple of rooms in the basement of this building until the village hall was built in 1930. The structure later housed the Kingsford Fire Department. *[John Alquist/Breitung Township]*

PHOTOGRAPHS OF KINGSFORD, DICKINSON COUNTY, MICHIGAN

[Compiled and Captioned by William John Cummings]



West Breitung School, Middle of the 200 Block of Lyman Street, Breitung, Kingsford, ca. 1945: The four-room West Breitung School, constructed in the middle of the 200 block on Lyman Street at a cost of \$33,275.25, was opened in 1923. In mid-November, 1924, a two-room addition had been completed, providing badly needed room due to an extremely large enrollment. At that time 590 children were housed in 11 rooms – six in the main building, four in the portable school and another in a one-room building. *[John Alquist/Breitung Township]*

PHOTOGRAPHS OF KINGSFORD, DICKINSON COUNTY, MICHIGAN
[Compiled and Captioned by William John Cummings]



Edward G. Kingsford Junior High School (Kingsford High School), Hamilton Avenue, Ford Addition, Kingsford, 1925: Kingsford Junior High School was rapidly nearing completion in mid-April, 1925, when this photograph was taken. Despite its name, the building served as Kingsford High School from 1925 through the spring of 1965. *[Menominee Range Historical Museum]*

PHOTOGRAPHS OF KINGSFORD, DICKINSON COUNTY, MICHIGAN

[Compiled and Captioned by William John Cummings]



Edward G. Kingsford Junior High School (Kingsford High School), Hamilton Avenue, Ford Addition, Kingsford, ca. 1927-1935: This view of Kingsford High School dates from the late 1920's to the early 1930's. Built on Hamilton Avenue in the Ford Addition in 1925 at a cost of \$259,886.06, the three-story brick structure had rooms outfitted for domestic science, chemistry and physics on the top floor, and a gymnasium, located on the first floor, contained a large stage and doubled as an auditorium. Note the three vintage cars in front of the school. *[Menominee Range Historical Museum]*

PHOTOGRAPHS OF KINGSFORD, DICKINSON COUNTY, MICHIGAN

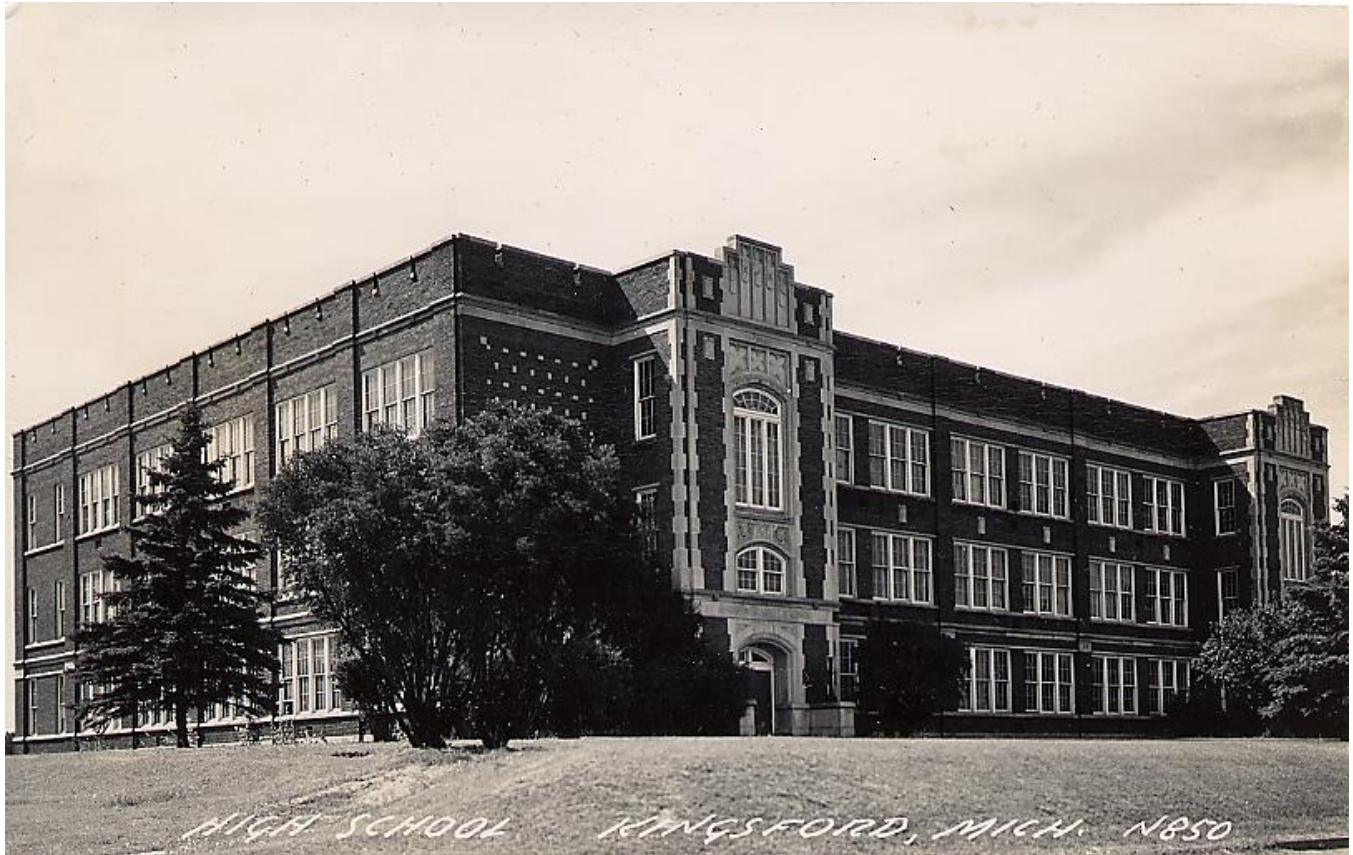
[Compiled and Captioned by William John Cummings]



Kingsford High School, Hamilton Avenue, Ford Addition, Kingsford, ca. 1940-1950: This postcard view of Kingsford High School, taken from Hamilton Avenue and dating from 1940-1950, shows the east and north sides of Kingsford High School with the vocational building in the background to the left of the flagpole. The upper floor contained home economics and drafting classrooms, while shop classes were located on the lower level. *[William John Cummings]*

PHOTOGRAPHS OF KINGSFORD, DICKINSON COUNTY, MICHIGAN

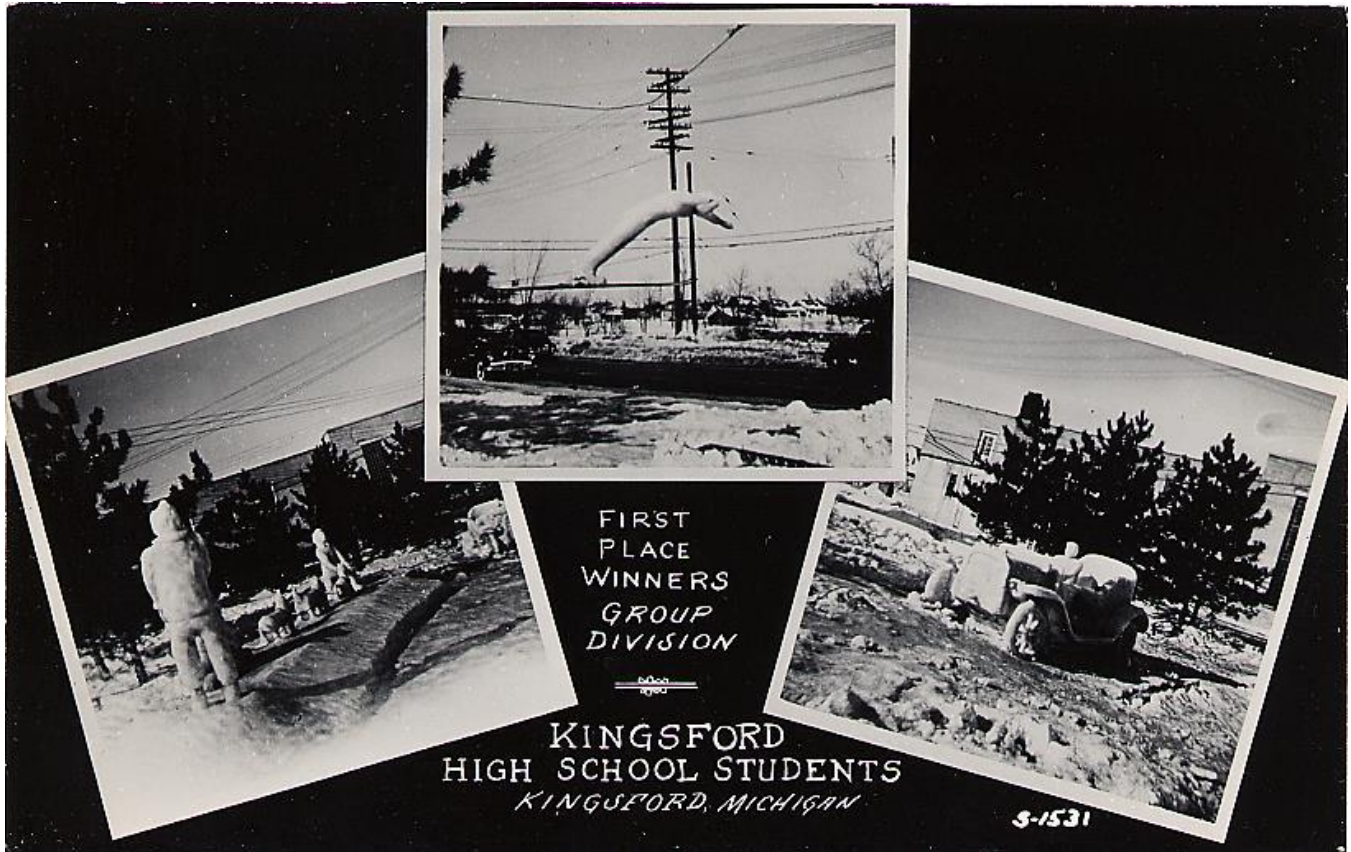
[Compiled and Captioned by William John Cummings]



Kingsford High School, Hamilton Avenue, Ford Addition, Kingsford, ca. 1950-1960: This postcard view of Kingsford High School, dating from 1950-1960, was taken looking northwest, showing the front façade on the east side and the south side of the building. In March, 1979, when the school was being used as a junior high school for seventh, eighth and ninth grades, there was a fire in the south end of this building. A student was responsible for this fire, and the south portion of the building could no longer be used. The ninth grade students were moved to the new Kingsford High School across the parking lot at that time. The structure fell to the wrecker's ball in late June and early July, 1991. *[William John Cummings]*

PHOTOGRAPHS OF KINGSFORD, DICKINSON COUNTY, MICHIGAN

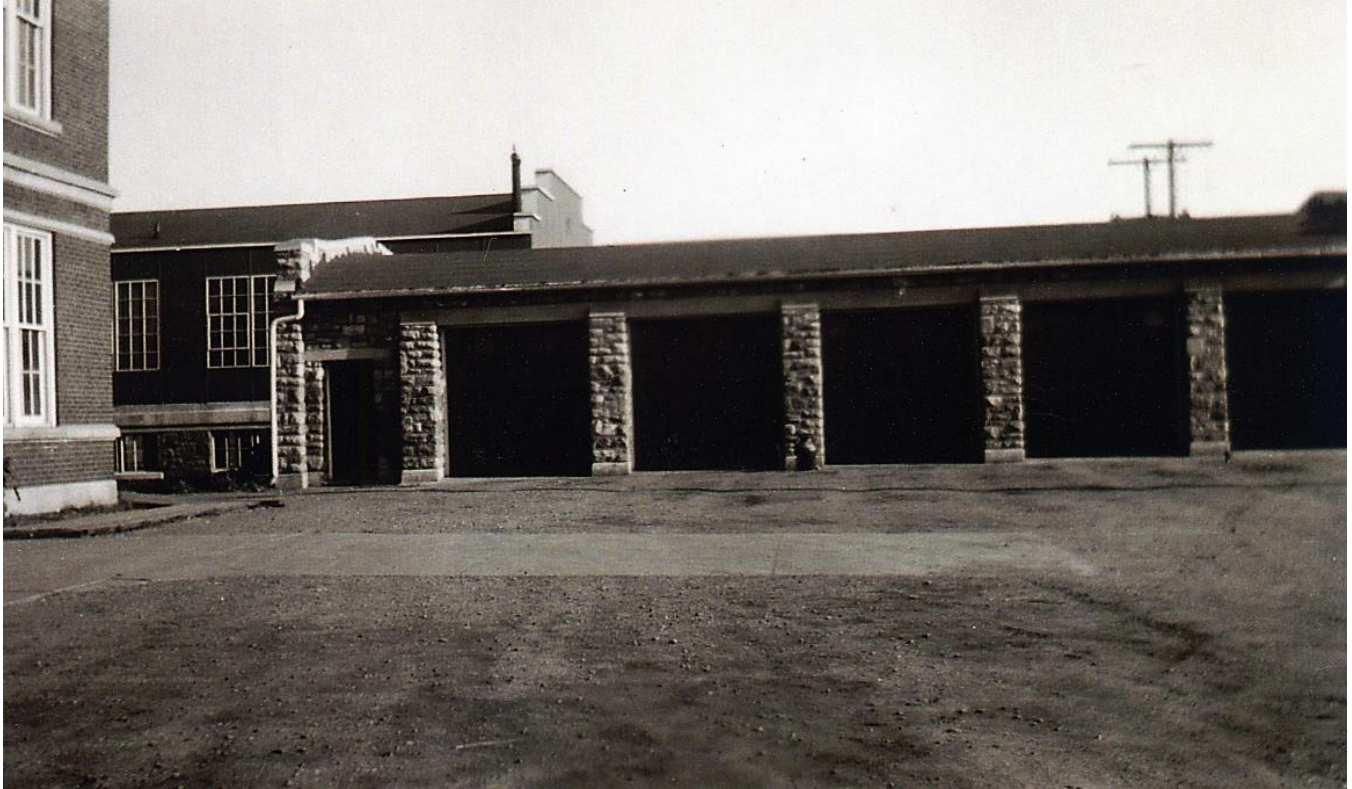
[Compiled and Captioned by William John Cummings]



Kingsford High School Snow Sculpture, Ford Addition, Kingsford, ca. 1950: This multiview postcard, dating about 1950, records that Kingsford High School students were the first place winners for a winter carnival with snow sculptures which included a dogsled team, a ski jumper and a flivver. *[William John Cummings]*

PHOTOGRAPHS OF KINGSFORD, DICKINSON COUNTY, MICHIGAN

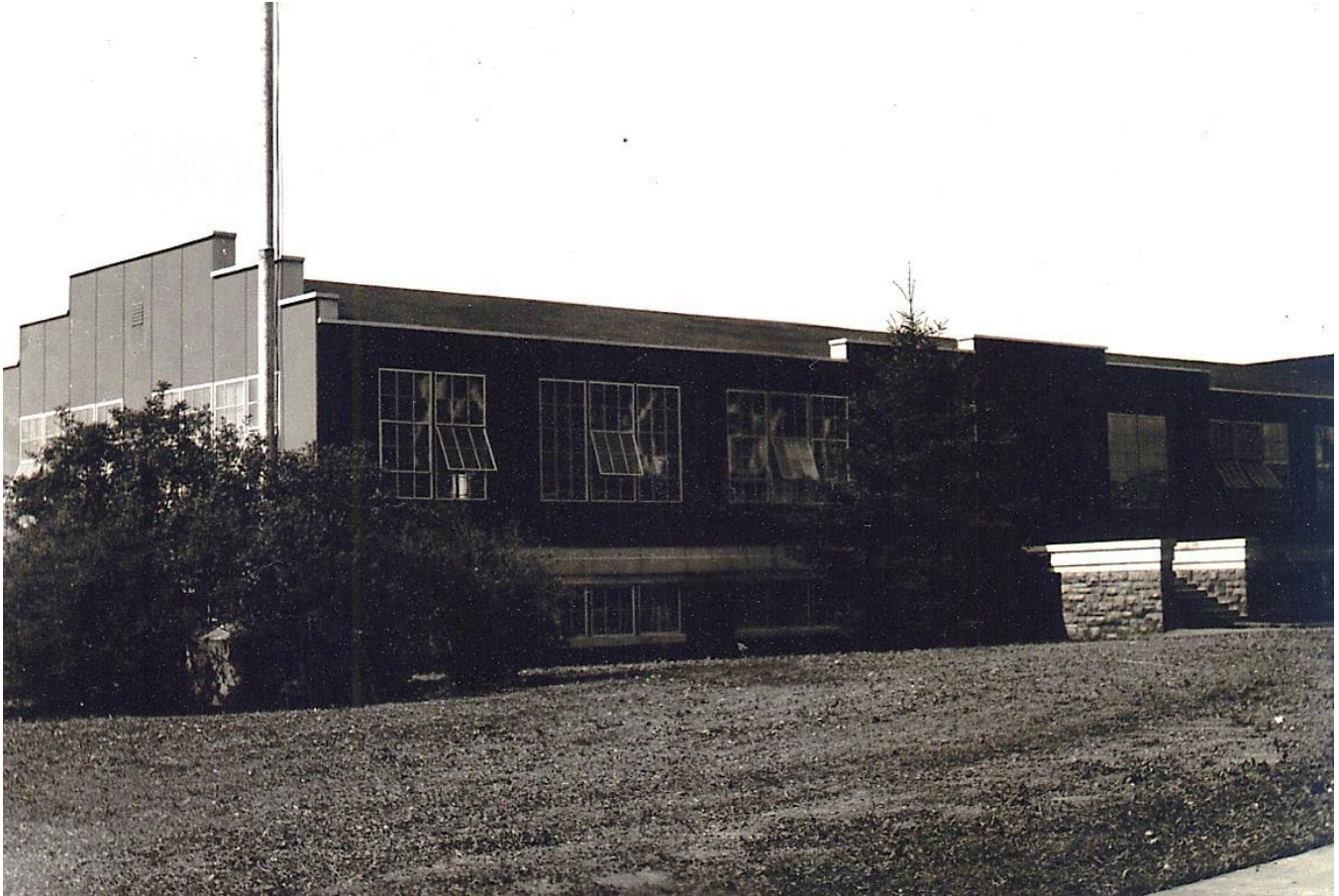
[Compiled and Captioned by William John Cummings]



Breitung Township Schools Bus Garage, Southwest of Kingsford High School, Hamilton Avenue, Ford Addition, Kingsford, ca. 1945: The bus garage was constructed at the south end of the parking area on the west side of Kingsford High School. The southwest corner of Kingsford High School is at the left of this photograph, and the Vocational Building is south of both the high school and the bus garage. The bus garage was later converted into the cafeteria for the high school, and another bus garage was constructed south of the Vocational Building, facing east and accessible from the parking lot in front of Kingsford High School. *[John Alquist/Breitung Township]*

PHOTOGRAPHS OF KINGSFORD, DICKINSON COUNTY, MICHIGAN

[Compiled and Captioned by William John Cummings]



Kingsford High School Vocational Building, South of Kingsford High School, Hamilton Avenue, Ford Addition, Kingsford, ca. 1945: The Vocational Building housed shop classes on the lower level and mechanical drawing and home economics classes on the upper level. This photograph shows the front of the building which faced north and the east end of the building. *[John Alquist/Breitung Township]*

PHOTOGRAPHS OF KINGSFORD, DICKINSON COUNTY, MICHIGAN

[Compiled and Captioned by William John Cummings]



Home Economics Class, Kingsford High School Vocational Building, South of Kingsford High School, Hamilton Avenue, Ford Addition, Kingsford, ca. 1945: The Home Economics classes were held east end of the upper level of the Vocational Building. Here students are seated at lab stations in the kitchen. *[John Alquist/Breitung Township]*

PHOTOGRAPHS OF KINGSFORD, DICKINSON COUNTY, MICHIGAN

[Compiled and Captioned by William John Cummings]



Home Economics Class, Kingsford High School Vocational Building, South of Kingsford High School, Hamilton Avenue, Ford Addition, Kingsford, ca. 1945: The Home Economics classes were held east end of the upper level of the Vocational Building. Here students are working in the demonstration kitchen. *[John Alquist/Breitung Township]*

PHOTOGRAPHS OF KINGSFORD, DICKINSON COUNTY, MICHIGAN

[Compiled and Captioned by William John Cummings]



Home Economics Class, Kingsford High School Vocational Building, South of Kingsford High School, Hamilton Avenue, Ford Addition, Kingsford, ca. 1945: The Home Economics classes were held east end of the upper level of the Vocational Building. Here students are seated in the living room area. *[John Alquist/Breitung Township]*

PHOTOGRAPHS OF KINGSFORD, DICKINSON COUNTY, MICHIGAN

[Compiled and Captioned by William John Cummings]



Home Economics Class, Kingsford High School Vocational Building, South of Kingsford High School, Hamilton Avenue, Ford Addition, Kingsford, ca. 1945: The Home Economics classes were held east end of the upper level of the Vocational Building. Here students are seated at lab stations in the sewing room area. *[John Alquist/Breitung Township]*

PHOTOGRAPHS OF KINGSFORD, DICKINSON COUNTY, MICHIGAN

[Compiled and Captioned by William John Cummings]



Home Economics Class, Kingsford High School Vocational Building, South of Kingsford High School, Hamilton Avenue, Ford Addition, Kingsford, ca. 1945: The Home Economics classes were held east end of the upper level of the Vocational Building. Here students are using an ironing machine (left) and wringing clothing in the wringer washing machine. *[John Alquist/Breitung Township]*

PHOTOGRAPHS OF KINGSFORD, DICKINSON COUNTY, MICHIGAN
[Compiled and Captioned by William John Cummings]



Shop Class, Kingsford High School Vocational Building, South of Kingsford High School, Hamilton Avenue, Ford Addition, Kingsford, ca. 1945: The shop classes were held in the lower level of the Vocational Building. Here students are working on a project at a work station. *[John Alquist/Breitung Township]*

PHOTOGRAPHS OF KINGSFORD, DICKINSON COUNTY, MICHIGAN

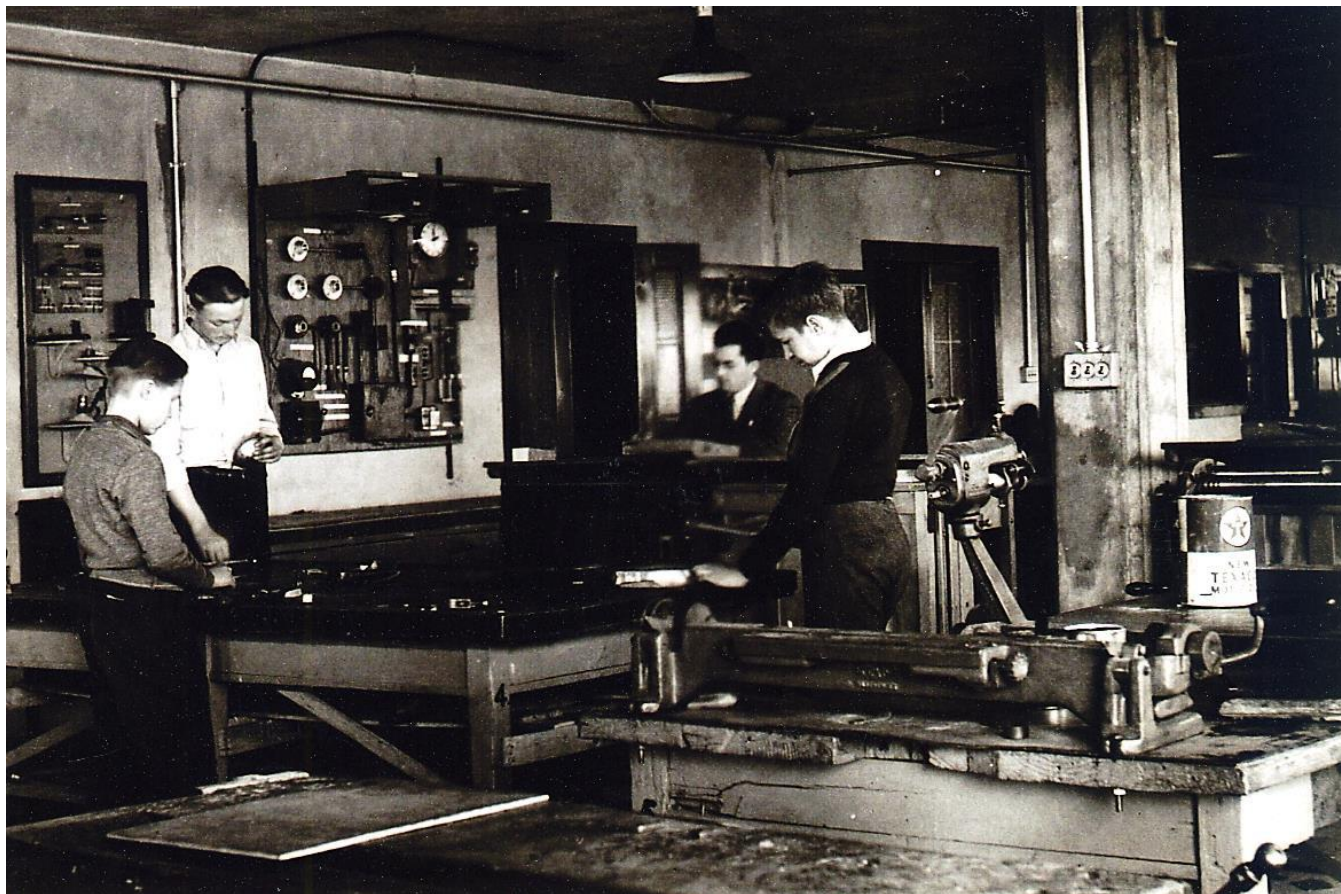
[Compiled and Captioned by William John Cummings]



Shop Class, Kingsford High School Vocational Building, South of Kingsford High School, Hamilton Avenue, Ford Addition, Kingsford, ca. 1945: The shop classes were held in the lower level of the Vocational Building. Here students are working on a project at a work station. *[John Alquist/Breitung Township]*

PHOTOGRAPHS OF KINGSFORD, DICKINSON COUNTY, MICHIGAN

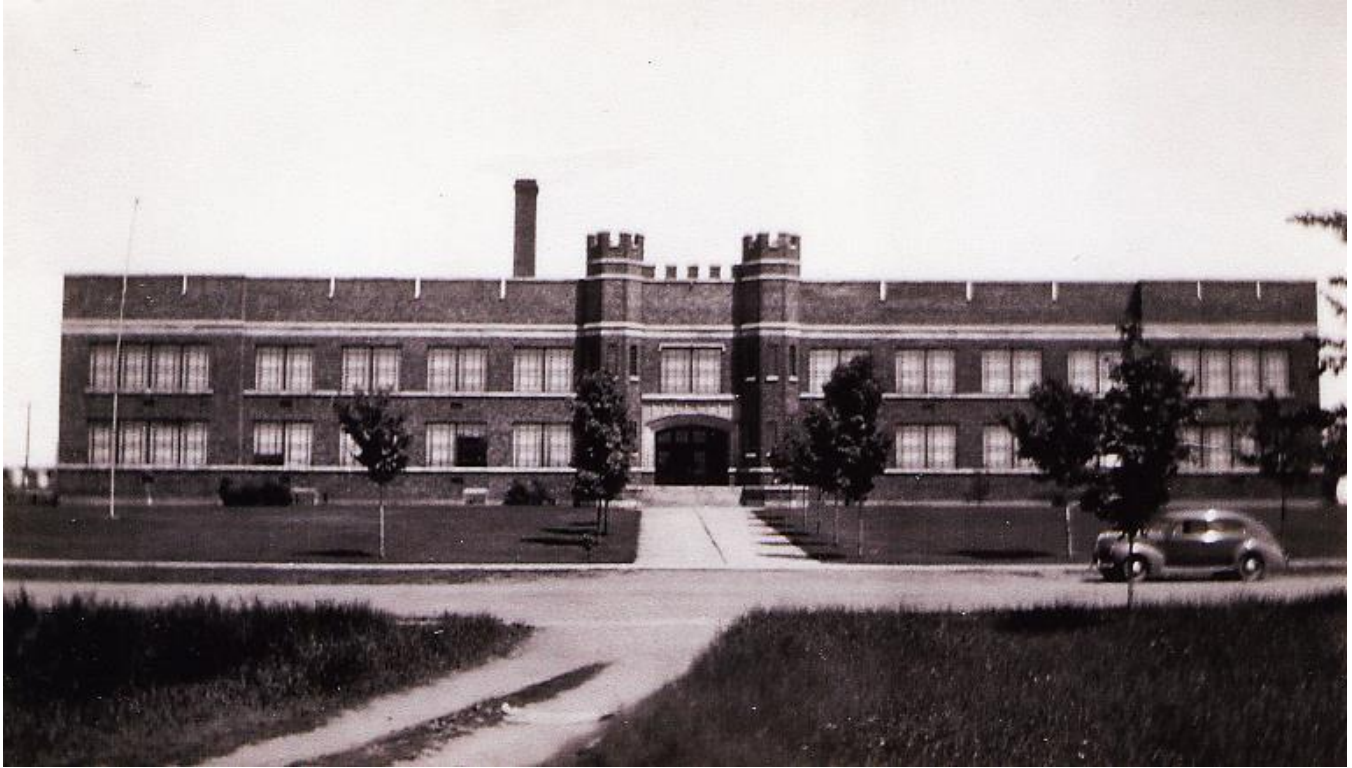
[Compiled and Captioned by William John Cummings]



Shop Class, Kingsford High School Vocational Building, South of Kingsford High School, Hamilton Avenue, Ford Addition, Kingsford, ca. 1945: The shop classes were held in the lower level of the Vocational Building. Here students are working on a project at a work station. Note the tools and other supplies hanging in an orderly fashion on the wall and the teacher seated at his desk in the background. *[John Alquist/Breitung Township]*

PHOTOGRAPHS OF KINGSFORD, DICKINSON COUNTY, MICHIGAN

[Compiled and Captioned by William John Cummings]



Garden Village School, Chestnut Street Between Henford Avenue and Sagola Avenue, Breitung, Kingsford, ca. 1945: The 14-room Garden Village School, constructed on Chestnut Street between Henford Avenue and Sagola Avenue at a cost of \$141,078.18, was opened March 24, 1926. Approximately 500 children were enrolled in kindergarten through sixth grade when the school opened, relieving congested conditions in other Breitung Township schools at the time and allowing 200 children to again attend classes on a full-time basis. *[John Alquist/Breitung Township]*

PHOTOGRAPHS OF KINGSFORD, DICKINSON COUNTY, MICHIGAN
[Compiled and Captioned by William John Cummings]



Westwood School, Lot Bordered by Westwood Avenue, Walworth Street and Mayfair Street, Kingsford Heights, Kingsford, ca. 1945: Ground was broken for the Westwood School, located on a lot bordered by Westwood Avenue, Walworth Street and Mayfair Street, on August 27, 1925. The 13-room school, constructed at a cost of \$169,981.81, was formally dedicated on September 21, 1926. This view shows the south end of the building. *[John Alquist/Breitung Township]*

PHOTOGRAPHS OF KINGSFORD, DICKINSON COUNTY, MICHIGAN

[Compiled and Captioned by William John Cummings]



Westwood School, Lot Bordered by Westwood Avenue, Walworth Street and Mayfair Street, Kingsford Heights, Kingsford, ca. 1945: It would appear that this snapshot photograph was taken when construction on the Westwood School was near completion, as the porches and steps which were located on the east side of the building have not yet been completed. The school was formally dedicated September 21, 1926, almost thirteen months after construction began. This view is taken looking west on Montclair Hill. *[City of Kingsford]*

PHOTOGRAPHS OF KINGSFORD, DICKINSON COUNTY, MICHIGAN

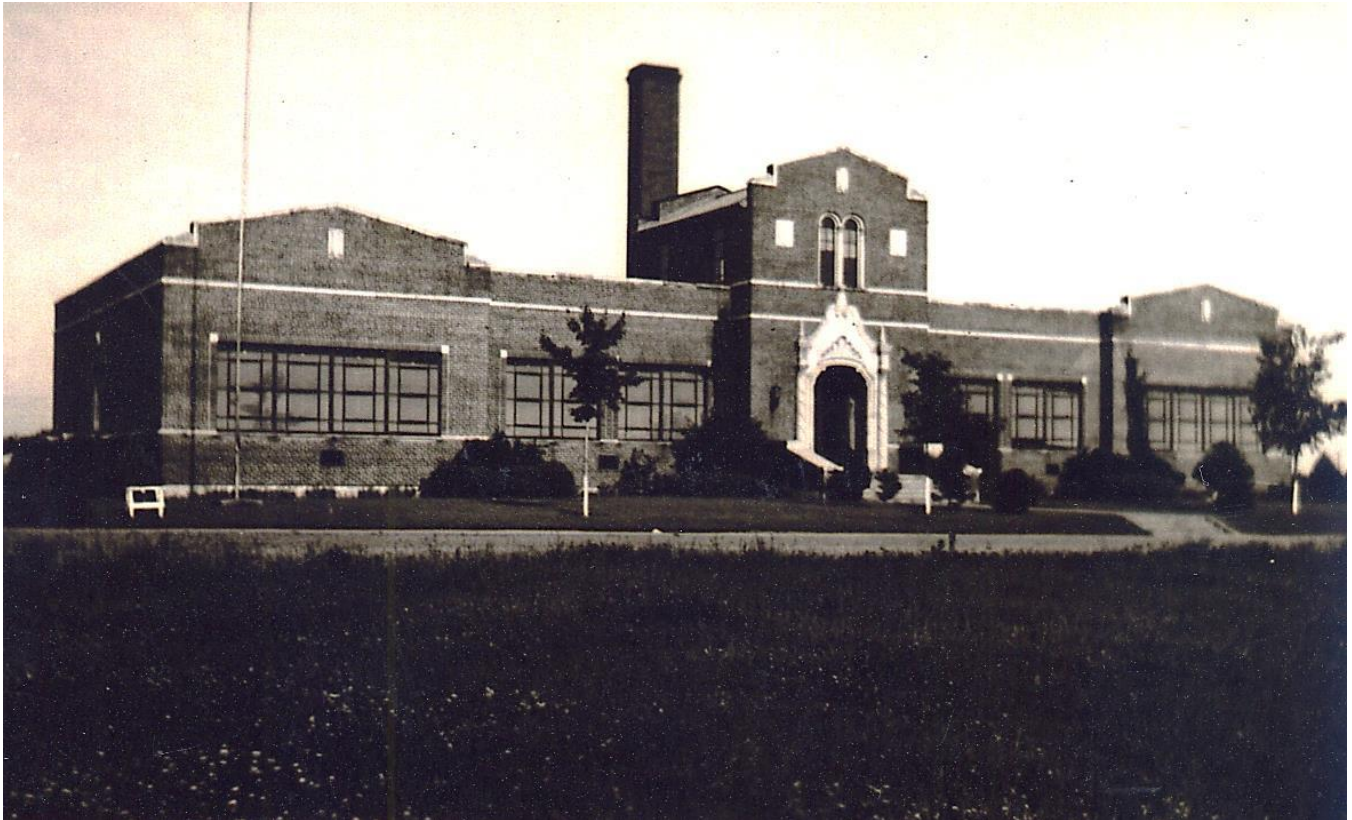
[Compiled and Captioned by William John Cummings]



Roosevelt School (Skidmore School), Northwest Corner of Hemlock Street and Hoadley Avenue, Breitung, Kingsford, ca. 1945: The 10-room Roosevelt School, sometimes referred to as the Skidmore School, was constructed on a lot on the northwest corner of Hemlock Street and Hoadley Avenue at a cost of \$110,672.40, and was dedicated November 1, 1926. *[John Alquist/Breitung Township]*

PHOTOGRAPHS OF KINGSFORD, DICKINSON COUNTY, MICHIGAN

[Compiled and Captioned by William John Cummings]



Lincoln School, Southeast Corner of South Jackson Street and Breen Avenue, Ferndale/East Kingsford, ca. 1945: The Lincoln School, constructed for a cost of \$70,774.25 at the southeast corner of South Jackson Street and Breen Avenue in the Ferndale-East Kingsford area, was officially dedicated December 2, 1926, marking the completion of an extensive three-year building program. Declining enrollment resulted in a recommendation by the state department of public instruction in August, 1942, to close the Lincoln School, as well as the Quinnesec High School. It was suggested that students from the Lincoln School could easily be absorbed by the Garden Village School at the time. *[John Alquist/Breitung Township]*