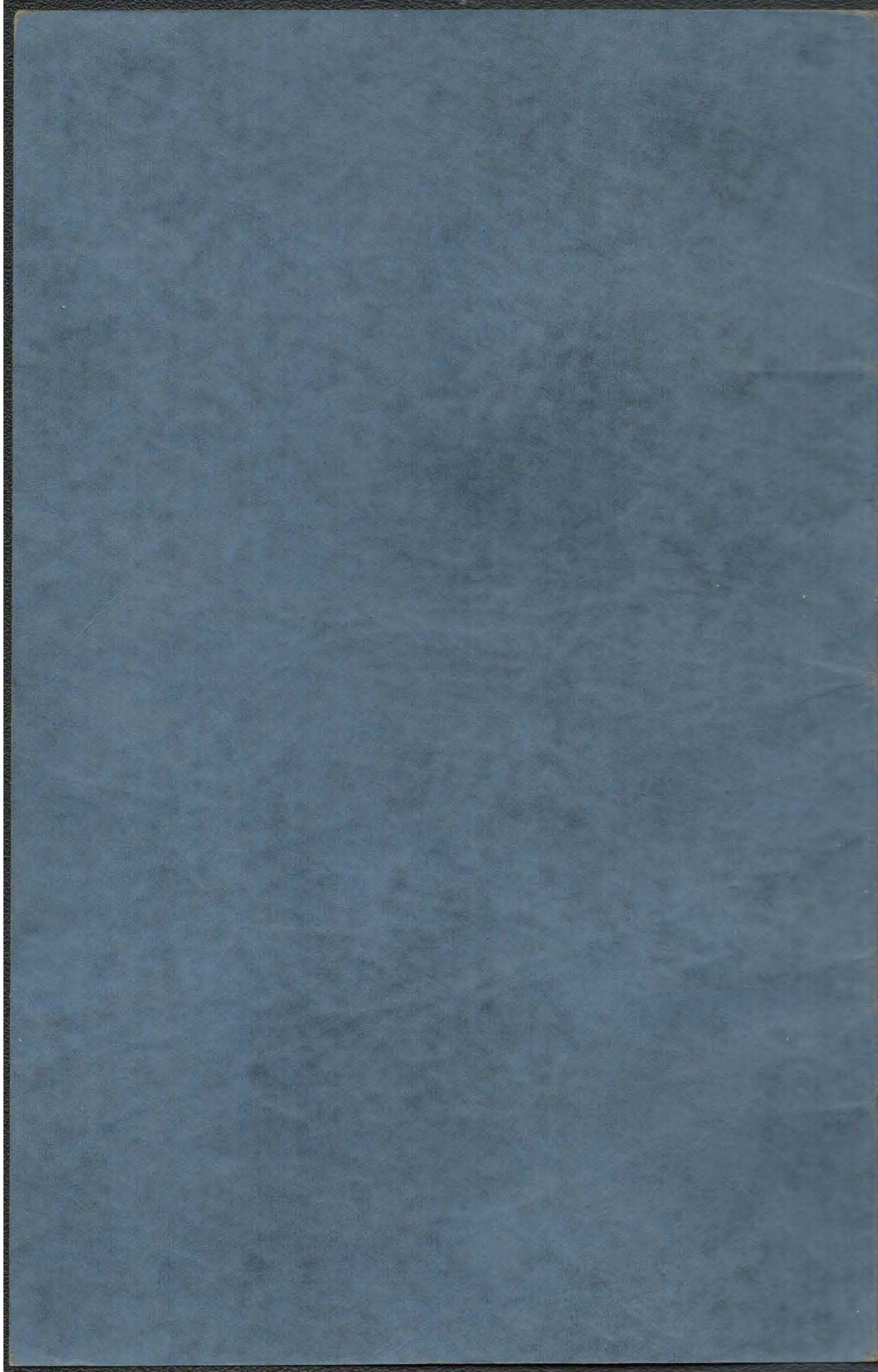


Senior Booklet

1939



NORTHERN STATE TEACHERS
COLLEGE



Beatrice R. West

1939

SENIOR CLASS

1939



CLASS WEEK

BaccalaureateSunday, June 11, 3:00 P. M.

Speaker—Rev. Fr. Joseph Zryd

Senior Class AssemblyMonday, June 12, 9:50 A. M.

Senior Class PicnicMonday, June 12, 1:30 P. M.

Faculty Reception to Graduating Class and Alumni.....

Friday, June 16, 8:30 P. M.

CommencementSaturday, June 17, 10:00 A. M.

Speaker—W. W. Whitehouse

Dean of Albion College



CLASS WEEK COMMITTEES

Senior Class Booklet Staff

Editor, Edwin McGuire

Associate Editor, Walter Johnson Photographer, William Trebilcock

Business Manager, Walter McClintock

Historians, Clara Karas and Olive Ann DesJardins

Senior Picnic

General Chairman, Walter McClintock

Transportation, Ralph Erickson

Refreshments, Olive Ann DesJardins

Games, Glenn Hunter

Caps and Gowns

Chairman, Noble Hatch.

Senior Assembly

General Chairman, Ruth Williams

Stage Properties, Alice Jaaksi, Roy Wehmanen

Music, Jayne Kitzman, Arthur McCombie



CLASS OFFICERS

Raymond LarsonIshpeming President	Ruth WilliamsMarquette Secretary
Fred Bernhardt.....Iron River Vice President	Claire CashellHubbell Treasurer

SENIOR ASSEMBLY

Monday, June 12, 9:50 A. M.

THE FASCIST FOLLIES

Author and DirectorRuth Williams

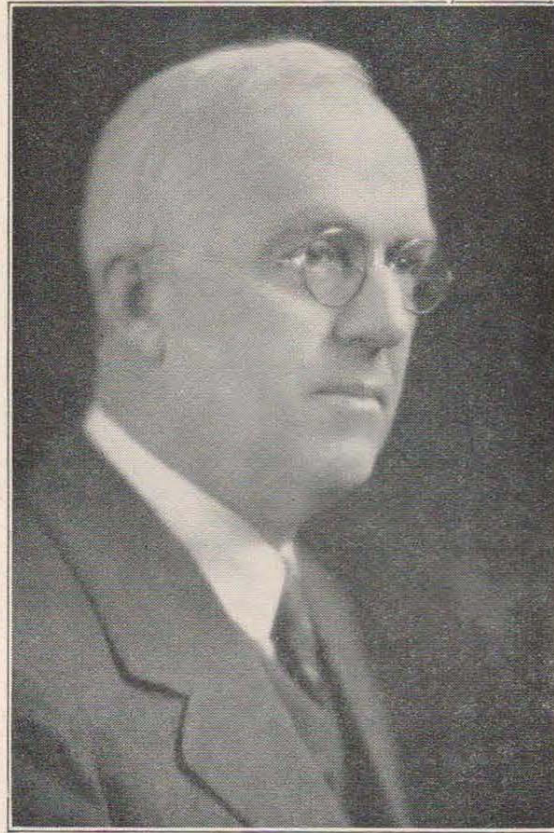
Cast of Characters

Hitler	David Pierpont
Hitler's Old Man	Leslie Pengelly
Hitler's Mother	Clara Karas
Goebbels	Richard Hawke
Goering	Carl Judy
Chamberlain	Noble Hatch
Mussolini	Francis Vetort
Policeman	Arthur McCombie
Daladier	Edmer LaCosse
Commentator	Walter Carlson
The Melody Masters—	Arthur McCombie, Carl Judy, Curtis Glanville, Stanley Susan.
Dixie Swing and Her Swayettes—	Marjorie MacLean, Dorothy Paull, Ruth McDonald, Elizabeth Alexander, Eleanor Taylor, Dorothea Leiblein, Rita Gaviglio.
Lenore	Lenore Moore
Stanley, the Magician	Stanley Susan
The Slayers of the Dance.....	Leslie Pengelly, Marvin Langlois
The Harmony Sisters.....	Hazel Elson, Jayne Kitzman, Rita Gaviglio
Guests—Helen Rentenbach, Helen Derleth, Ethel Knutson, Jeanne Drury, Dean Davey, Phillip Kelsey, Robert Northey.	

1939

SENIOR CLASS

1939



Our Friend and Adviser during our four years at Northern.
President Webster H. Pearce, A. M., M. Ed., LL.D.





Front (left to right)—Alice Jaaksi, Rita Gaviglio, Ada Hosking, Gertrude Bennett, Clara Lefevre, Myrtle Haupt, Mary Louise Casler. Center—Ralph Erickson, Wayne Aho, Laura Huhtala, Ruth Berryman, Jeanne Drury, Norma Arola, Leslie Pengelly, Arthur Kortesoja. Back—Jay Brady, Oliver Johnson, Kenneth Keppler, William Hakkarainen, Truman Atwell, Arthur Forcier.

SENIORS

- AHO, WAYNE O.**.....Negaunee
Basketball, 1, 2, 3, 4.
Track, 1.
Mathematics Club.
- ALEXANDER, MRS. CECILE**.....
Marquette
Kindergarten Club, 2, 3.
Newman Club, 2, 4.
E. T. C., 3, 4.
- ALEXANDER, ELIZABETH J.**.....
Michigamme
French Club, 1, Pres., 2, 3, 4.
Forum Debating Society, 2, 3. Treas.,
4.
Tau Pi Nu Sorority, 1, 2, 3. Corresp.
Sec., 4.
Student Girls' League, 3.
Soph. Prom—Chairman Foods Com-
mittee.
Jr. Prom—Chairman Favors Commit-
tee.
- ANNEAR, KEITH R.** (Winter Term)
Marquette
Intramural Basketball, 1, 2, 3.
Glee Club, 1.
Football, 1, 2, 3.
Prom Committee, 3.
Track, 1, 2, 3.
Mixed Chorus, 1, 2, 3.
- AROLA, NORMA L.**.....Republic
Gamma Phi Alpha Sorority, 1, 2, 3, 4.
Sec., 2.
Minervan Debating Society, 1, 2, 3, 4.
Treas., 3.
Lutheran Students' Association, 1, 2,
3, 4. V. Pres., 3.
Chorus, 2, 3.
News Staff, 3, 4.
Art Club, 4.
- ATWELL, TRUMAN R.**.....Gwinn
Industrial Arts Club, 1, 2, 3, 4.
Junior Class Play

1939 SENIOR CLASS 1939

- BENNETT, GERTRUDE E.**.....Negaunee
 Chorus
 E. T. C.
 Kappa Delta Pi, 4.
- BERNHARDT, FRED**.....Iron River
 Football, 1, 2, 3, 4.
 Lutheran Students' Association, 1, 2, 3, 4.
 Mathematics Club, 3, 4.
 Men's Discussion Club, 4.
 Cambium Club, Sec'y, 4.
 Senior Class Vice President.
- BERRYMAN, RUTH E.**.....Iron River
 Gamma Phi Alpha Sorority, 2, 3, 4.
 Treas., 3, 4.
 Orchestra, 3, 4.
 News Staff, 3, 4.
 Kindergarten Club, 4.
- BERWIN, EVELYN I.**.....Manistique
 Lutheran Students' Association, 2, 3, 4.
 Minervan Debating Society, 2, 3, 4.
 V. Pres., 4.
 Chorus, 3, 4.
- BICHLER, MARIAN**Gladstone
 Transfer Escanaba Freshman College.
 Lutheran Students' Association, 2, 3, 4. Sec'y, 4.
 Minervan Debating Society, 3, 4.
 Treas., 4.
 Gamma Phi Alpha Sor., 2, 3, 4. Sec., 3. V. Pres., 4.
 News Staff, 4.
 Delegate to L. S. A. Convention, 3.
- BRADY, JAY A.**.....Negaunee
 Commercial Club, 2, 3, 4. Pres., 3.
 Senior Class Booklet Staff.
- BUZZO, GRACE G.**.....Marquette
 Transfer from Lyons Township Jr. College, La Grange, Ill.
 French Club, 4.
- BUZZO, MARINA L.**.....Marquette
 Transfer from Lyons Township Jr. College, La Grange, Ill.
- CARLSON, J. WALTER**Ishpeming
 Mathematics Club, 1.
 Dramatics Club, 1, 2, 3, 4. V. Pres., 4.
 Kappa Delta Pi, 3. Pres., 4.
 Men's Discussion Club, 3, 4.
 Tennis Team, 2, 3, 4.
 Jr. Class Play.
 News Staff, 3, 4.
 Men's Union Banquet Speaker, 3.
- CASHELL, CLAIRE M.**.....Hubbell
 Commercial Club, 1, 2, 3, 4.
 Delta Sigma Nu Sorority, 1, 2, 3, 4.
 Newman Club, 1, 2, 3, 4.
 Senior Class Treasurer.
- CASLER, MARY LOUISE**.....Marquette
 Orchestra, 1, 3, 4.
 French Club, 1.
 Delta Sigma Nu Sorority, 1, 2, 3, 4.
 Historian, 3. Sec., 4.
 Chorus, 3.
 Novahoma, 4.
 News Staff, 3.
 Girl Scout Captain, 4.
- CLARK, GLADYS A.**.....Stambaugh
 Gamma Phi Alpha Sorority, 2, 3, 4.
 Chorus, 3.
 News Staff, 3, 4.
 Junior Prom Committee.
- DAVEY, JEAN E.**.....Painesdale
 Kindergarten Club, 1, 2, 3, 4. V. Pres., 4.
 Cegmer Seg Sorority, 3, 4.
 Glee Club, 2, 3, 4.
 Chorus, 2, 3.
- DE MERSE, MARGARET E. (Winter Term)**Marquette
 Junior Prom.
 Delta Sigma Nu Sorority, 1, 2, 3, 4.
 Northern News Staff, 1, 2, 3, 4.
 Debate, 1.
 French Club, 1, 2, 3, 4.
 Drama Club, 1, 2, 3, 4.
- DERLETH, HELEN**.....Marquette
 Beta Omega Tau, 1, 2, 3, 4.
 Forum Debating Society, 1, 2.
 Commercial Club, 2, 3, 4.
 Student Girls' League Council, 1, 2.
 French Club, 1, 2.
- DES JARDINS, OLIVE A.**.....Marquette
 Beta Omega Tau, 1, 2, 3, 4. Sec., 3. Pres., 4.
 Newman Club, 1, 2, 3, 4. V. Pres., 3.
 Student Girls' League Council, 3.
 Senior Booklet Staff.
 Home Economics Club, 4.
 Prom Committee, 2, 3.



Front (left to right)—Dorothy Kelley, Gladys Clark, Ragnhild Johnson, Marian Bichler, Elizabeth Alexander, Helen Derleth, Mary Harvey. Center—Clara Karas, Claire Cashell, Jean Davey, Lenore Moore, Taimi Ranta, Curtis Glanville, Edmer Lacasse, Edwin McGuire. Back—Carl Judy, Arthur McCombie, Noble Hatch, Walter McClintock, David Pierpont, Walter Johnson, Glen Hunter, James Soli, Raymond Larson.

DRURY, JEANNE M......Marquette

Transfer Asbury College.
Beta Omega Tau, 2, 3, 4.
Home Economics Club, 3, 4. Sec., 4.

ELSON, HAZEL M......Ishpeming

Soph. Class Secretary.
Junior Class Secretary.
Girls' League Council, Sec.-Treas., 2.
Intercollegiate Debate, 2, 3, 4.
Girls' Glee Club, 2, 3, 4.
Phi Epsilon, 2, 3, 4. Pres., 3, 4.
Kappa Delta Pi, 3, Sec., 4.
Delta Sigma Nu, 1, 2, 3, 4. Pres., 4.
Forum, 1, 2.
Chorus, 1, 2.

ERICKSON, RALPH E......Marquette

Mathematics Club, 1, 2, 3, 4.
Phi Epsilon, 2, 3, 4.
Kappa Delta Pi, 3, 4.

FORCIER, ARTHUR.....Gladstone

Chorus, 1.
French Club, 1, 2.
Junior Class Play.
Newman Club Pres., 4.

GAVIGLIO, RITA C......Negaunee

Poetry Reading Contest, 4.
Kappa Delta Pi, 4.
Phi Epsilon, 3, 4. V. Pres., 4.
Phi Kappa Nu Sorority, 1, 2, 3, 4. Cor-
resp. Sec., 2, Sec., 3.
Kindergarten Club, 1, 2, 3, 4.
Phys. Ed. Club, 1, 2, 3.
Newman Club.
Girls' Intramurals.
Girls' Glee Club, 2.
Chorus, 2.

GLANVILLE, CURTIS J......Hubbell

Band, 2, 3, 4.
Orchestra, 2, 3, 4.
Men's Glee Club, 2, 3, 4.
Chorus, 2, 3, 4.
Men's Octette.
Music Club, V. Pres.
Theta Omicron Rho. Sec., 2, Treas. 3.
Theta Minstrel Shows, 2, 4.

HAKKARAINEN, WILLIAM.....Negaunee

Math Club, 1, 2, 3, 4. V. Pres., 3.

1939 SENIOR CLASS 1939

HARVEY, MARY.....Iron Mountain
 Forum Debating Society, 1, 2.
 Gamma Phi Alpha, 1, 2, 3, 4. V.
 Pres., 3, 4.
 Debate Team, 2.
 News Staff, 1, 2, 3, 4. Page Editor, 2,
 3, 4.
 Prom Committee, 2.
 Soph. Class Treasurer.
 French Club, 1.
 Junior Play.
 Drama Club, 4.

HATCH, NOBLE B......Marquette
 French Club, 1.
 Commercial Club, 1, 2, 3, 4. V. Pres.,
 2, 3, Sec., 4.
 Drama Club, 4.
 Chorus, 1.
 Junior Class Play.
 Wesleyan Guild, 1. Pres., 2, Sec.-Treas.
 3.
 Kappa Delta Pi, 4.

HAUPT, MYRTLE M......Marquette
 Beta Omega Tau Sorority, 1, 2, 3, 4.
 Treas., 2, 3, 4.
 Student Girls' League Council, 1.
 Kindergarten Club, 1, 2, 3, 4.

HAWKE, RICHARD.....Stambaugh
 Phi Epsilon Sec., 2.
 Kappa Delta Pi, 4.
 Men's Discussion Club, 3, 4.
 Tennis Team, 3.
 Intramural Basketball.

HOSKING, ADA H......Iron Mountain
 French Club, 1, 2.
 Forum Debating Society, 1, 2, 3, 4.
 Sec., 2, Pres., 3.
 Gamma Phi Alpha Sorority, 1, 2, 3, 4.
 Corresp. Sec., 3, Pres., 4.
 Phi Epsilon, 2, 3, 4.
 Kappa Delta Pi, 3. Historian, 4.
 News Staff, 3.

HUHTALA, LAURA.....Palmer
 Orchestra, 2, 3.
 Girls' Glee Club, 1, 2, 3.
 Chorus, 1, 2, 3.
 Lutheran Students' Association, 2, 3.
 Minervan Debating Society, 3.

HUNTER, ALFRED G......Marquette
 Football, 1, 2, 3, 4.
 Basketball, 1, 2, 3, 4.
 Track, 1, 2, 3.
 Tri Mu Fraternity, Pres., 3.
 Phys. Ed. Club, Pres. 4.

JAAKSI, ALICE H......Ishpeming
 Tau Pi Nu Sorority, 1, 2, 3, 4. Senior
 Guide, 3.
 Lutheran Students' Association, 3, 4.
 Art Club, Sec., 3, Pres., 4.
 Chorus, 2.
 Prom Committee, 2, 3.

JADIN, IRVING (Winter).....Gladstone
 Tennis, 3.
 Football, 1, 2.

JOHNSON, OLIVER.....Carlshend
 French Club, 1, 2, 3, 4. V. Pres., 3,
 Sec.-Treas., 4.
 Drama Club, 3, 4.
 Math Club, 1, 2.
 Chorus, 3.
 Phi Epsilon, 2, 3, 4.
 Kappa Delta Pi, 3, 4.

JOHNSON, RAGNHILD M......Negaunee
 Orchestra, 1, 2, 3, 4.
 Lutheran Student Association, 1, 2, 3, 4.

JOHNSON, WALTER L......Ishpeming
 Men's Discussion Club, 2, 3, 4. Pres., 4.
 Cambium Club, 4.
 Kappa Delta Pi, 4.
 Senior Class Booklet, Assoc. Editor.

JUDY, CARL A......Marquette
 Chorus, 1, 2, 3, 4.
 Men's Glee Club, 1, 2, 3, 4.
 Orchestra, 1, 2, 3, 4.
 Band, 1, 2, 3, 4.
 Music Club, 3, 4. Treas., 3.

KARAS, CLARA J......Escanaba
 Phy. Ed. Club, 2, 3, 4. Treas., 3.
 Student Girls' League, 4. Treas. 4.
 Drama Club, 2, 3, V. Pres., 2.
 College Symphony Orchestra, 2, 3, 4.
 Little Symphony Orchestra, 2, 3, 4.
 Girls' Glee Club, 2, 3.
 Girls' Vocal Sextet, 2, 3.
 Tau Pi Nu Sorority, 2, 3, 4. Sec., 3.

KELLEY, DOROTHY J. (Winter)
 Ishpeming
 Glee Club, 1, 2, 3, 4.
 Cegmer Seg Sorority, 1, 2, 3, 4. Treas.,
 2.
 Commercial Club, 1, 2, 3, 4.
 Kindergarten Club, 1, 2, 3, 4. Pres., 3.



Front (left to right)—Grace Roberts, Eleanor Stenstrom, Gertrude Mackey, Bertha Simi. Second Row—Ethel Knutson, Eleanor Taylor, Ruth MacDonald, Evelyn Berwin, Clare Naber. Third Row—Clarabelle Reynolds, Dorothy Manahan, Jayne Kitzman, Angeline Sarto, Ruby Price, Katherine Nebel. Fourth Row—Joy Kooker, Roy Wehmanen, George Trebilcock, Arvi Niemi.

KITZMAN, JAYNE.....Marquette

Girls' Glee Club, 1, 2, 3, 4.
Chorus, 1, 2, 3.
Phy. Ed. Club, 2, 3, 4.
Primary Club, 3, 4.
Phi Epsilon, 2, 3, 4.
Kappa Delta Pi, 3, 4.
News Staff, 2, 3, 4. Page Editor, 4.
Cegmer Seg Sorority, 1, 2, 3, 4.
V. Pres., 4, Corresp. Sec., 3.
Vocal Sextet, 2, 3.

KNUTSON, ETHEL E......Newberry

Lutheran Students' Association, 1, 2, 3.
Junior Class Play.
Junior Prom Committee.
Novahoma Club.
Home Economics Activity Day.
Phi Kappa Nu, 1. V. Pres., 2, Corres. Sec., 3, Pres., 4.

KOOKER, JOY.....Ewen

Novohoma Club, 4.
Phi Kappa Nu Sorority, 1, 2, 3, 4.
G. S. Lieutenant, 2, 3.

KORTESOJA, ARTHUR H......Kingsford

Transfer from Suomi College, Hancock, Michigan.
Lutheran Students' Association, 3, 4.

LACASSE, EDMER J......Harris

Phy. Ed. Club, 1. Sec., 2, 3, 4.
Football, 1, 2, 3, 4.
Basketball, 1, 2, 3, 4.
Track, 1, 2, 3, 4.

LANGLOIS, MARVIN.....Marquette

Prom Committee, 2, 3.
Math Club, 1, 2, 3, 4.
Newman Club, 1, 2, 3, 4.
Theta Omicron Rho Fraternity, 3, 4.

LARSON, RAYMOND D......Ishpeming

Math. Club, 2, 3, 4.
Men's Discussion Club, 2, 3, 4.
Kappa Delta Pi, 3, 4. V. Pres., 4.
Senior Class Pres.

1939 SENIOR CLASS 1939

- LEARY, VERNA E.**.....Hancock
 Gamma Phi Alpha Sorority, 1, 2, 3, 4.
 Newman Club, 1, 2, 3, 4.
 Commercial Club, 1, 2, 3, 4.
- LEFEVRE, CLARA R.**.....Stephenson
 Kindergarten Club, 3, 4.
 Minervan Debating Society, 4.
 Newman Club, 1, 2, 3, 4.
 Orchestra, 4.
 E. T. C., 4.
- LIEBLIEN, DOROTHEA K.**.....Hancock
 Transfer from College of St. Scholas-
 tica, Duluth, Minn.
 Beta Omega Tau Sorority, 3, 4.
 Newman Club, 2, 3, 4.
- LUNDQUIST, EDITH H.**.....Marquette
 Math Club, 2, 3.
 E. T. C., 4.
- McCLINTOCK, WALTER J.**.....Marquette
 Theta Omicron Rho, 1, 2, 3, 4.
 Prom Committee, 2, 3.
 Math. Club, 1, 2, 3, 4.
 Senior Booklet Business Manager.
- McCOMBIE, ARTHUR E.**.....Marquette
 Band, 1, 2, 3, 4.
 Orchestra, 1, 2, 3, 4.
 Men's Glee Club, 1, 2, 3, 4.
 Chorus, 1, 2, 3, 4.
 Music Club Pres., 3.
 Men's Octette, 2, 3, 4.
 Junior Class Play.
 Junior Prom Committee.
 Senior Program Committee.
 Little Symphony, 4.
- MAC DONALD, RUTH**.....Marquette
 Delta Sigma Nu, 1, 2, 3, 4.
 Kindergarten Club, 1, 2.
 Girls' Glee Club, 1, 2.
 Forum Debating Society, 1.
- McGUIRE, EDWIN V.**.....Marquette
 Industrial Arts Club, 1, 2, 3, 4. Sec., 4.
 Newman Club, 1, 2, 3, 4. V. Pres., 4.
 Junior Class President.
 News Staff, 2, 3, 4. Editor, 4.
 Senior Booklet Editor.
 Junior Class Play.
 Men's Union Executive Committee, 3.
- MAC LEAN, MARJORIE F.**.....Marquette
 Girls' Glee Club, 2, 3, 4.
 Tau Pi Nu Sorority, 1, 2, 3, 4. Pres., 4.
 Junior Class Play.
- MACKEY, GERTRUDE E.**.....Marquette
 Symphony Orchestra, 1, 2, 3, 4.
 Little Symphony, 4.
 Chorus, 1, 2, 3, 4.
 Lutheran Student Association, 2, 3, 4.
 Commercial Club, 2, 3, 4.
 Music Club, 3, 4.
 Minervan Debating Society, 1, 2, 3, 4.
- MANAHAN, DOROTHY E.**
 Iron Mountain
 Kindergarten Club, 4.
 Girls' Glee Club, 3.
 Chorus, 3, 4.
- MANKIEWICZ, VICTOR E.**.....Harris
 Football, 1.
 Intramural Basketball, 1, 2, 3, 4.
 Newman Club, 1, 2, 3, 4.
- MANTY, ROY R.**.....Marquette
 Transfer from U. of Michigan.
 Cambium Club, 4. Pres., 4.
- MEHNERT, MARTHA L.**.....Marquette
 Beta Omega Tau, 1, 2, 3, 4. Corres.
 Sec., 4.
 Home Economics Club, 3, 4.
 Forum Debating Society, 1.
 Wesleyan Guild.
 Phi Epsilon, 2, 3, 4.
- MOORE, LENORE E.**.....Iron River
 Glee Club, 2, 3, 4.
 Sextet, 2, 3.
 Tau Pi Nu Sorority, 2, 3, 4.
 Newman Club, 2, 3, 4.
- NABER, CLARE E.**.....Sidnaw
 Minervan Debating Society, 2, 3, 4.
 Kindergarten Primary Club, Treas., 4.
 Wesleyan Guild, 1, 2. Librarian, 3, 4.
- NEBEL, KATHERINE E.**.....Gladstone
 Math Club, 3, 4.
- NIEMI, ARVI E.**.....Grand Marais
 Band, 1, 3.
 Lutheran Student Association, 1, 3.
 Men's Discussion Club, 3, 4.
 Theta Omicron Rho, 1, 2, 3, 4. Treas.,
 2, 3, Pres., 4.
 Phi Epsilon, 2, 3, 4.
 Kappa Delta Pi, 3, 4.

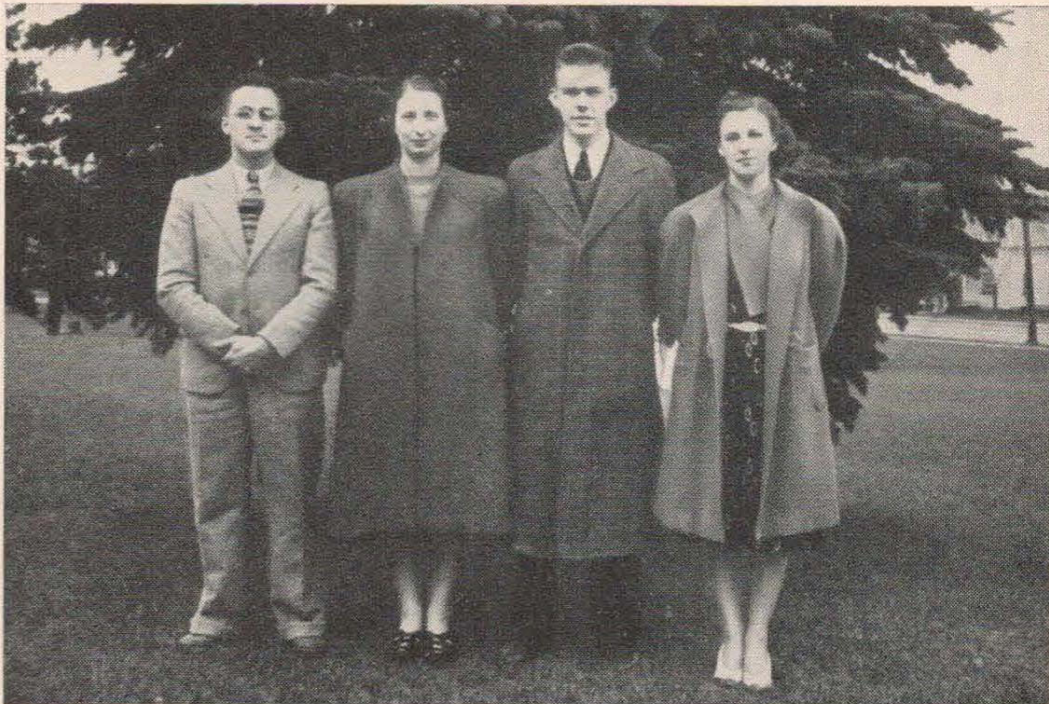


Front (left to right)—Marjorie MacLean, Valerie Saitz, Merle Paull, Alice Stanaway, Second Row—Martha Rohl, Hazel Elson, Ruth Williams, Verna Leary. Third Row—Clarence Sargent, Victor Mankiewicz, Edward Wiecech, Walter Carlson, Reino Ranta, Marvin Langlois, Robert Northey. Fourth Row—Paul Rosten, Richard Hawke, Stanley Susan, Kenneth Whipple, Sanford Burton.

- NORTHEY, ROBERT E.**.....Negaunee
Basketball, 1, 2, 3, 4.
Football, 2, 4.
Track, 1, 2.
Soph. Class President.
Tri Mu Fraternity, 1, 2, 3, 4.
Math. Club, 3.
Phi Epsilon, 2, 3, 4.
Kappa Delta Pi, 3, 4.
- PAULL, DOROTHY**.....Ishpeming
Phi Kappa Nu, 1, 2, 3, 4.
Phy. Ed. Club, 2, 3, 4.
Student Girls' League Pres., 4.
- PAULL, J. MERLE**.....Ironwood
Transfer from Ironwood Jr. College.
French Club, 1, 2.
Women's Athletic Association, 1, 2.
Minervan Debating Society, 3, 4.
Kappa Delta Pi, 4.
- PENGELLY, LESLIE W.**.....Negaunee
Track, 2, 3.
Junior Class Vice Pres.
Cambium Club, 4.
Tri Mu Fraternity, 1, 2, 3, 4.
Northern Brightlights, 1, 3.
Prom Committee, 2, 3.
Men's Discussion Club, 4.
- PETERSON, GAIL O.**.....Gladstone
- PIERPONT, DAVID**.....Ironwood
Transfer from Ironwood Jr. College.
Commercial Club, 3, 4. Pres., 4.
Music Club, 3, 4.
Tri Mu Fraternity, 3, 4.
Band, 3, 4.
Glee Club, 3, 4.
News Staff, 3.
Northern Brightlights, 3.
Octette, 3.
- PRICE, RUBY J.**.....Houghton
Cegmer Seg Sorority, 1, 2, 3, 4. Sec.,
3, Treas., 4.
Commercial Club, 1, 2, 3, 4. Treas., 3,
Sec., 2.
Forum Debating Society, 2, 3, 4. Treas.,
3, 4.
French Club, 1.
Jr. Class Play.
Prom Committee, 2, 3.
- RANTA, REINO E.**.....Ishpeming
Discussion Club, 3, 4.
Math. Club, 1, 2, 3, 4.

1939 SENIOR CLASS 1939

- RANTA, TAIMI M.**.....Marquette
 French Club, 1, 2.
 Minervan Debating Society, 1, 2, 3, 4.
 Pres., 4.
 Phi Epsilon, 2, 3, 4.
 Kappa Delta Pi, 3, 4. Treas., 4.
 Northern News Staff, 2.
- RENTENBACH, HELEN C.**.....Hancock
 Transfer from College of St. Scholas-
 tica.
 Newman Club, 3, Sec., 4.
 Commercial Club, 3, 4.
 Beta Omega Tau, 3, 4.
- REYNOLDS, CLARABELLE**
 Ludington
 Transfer from Ferris and C. S. T. C.
 Phi Kappa Nu Sorority, 3, 4.
 Girls' Intramural, 3.
 E. T. C., 4.
- ROBERTS, GRACE O.**.....Gwinn
 Forum Debating Society, 1, 2, 3, 4.
 Tau Pi Nu Sorority, 1, 2, 3, 4. Treas.,
 2, 3.
 Home Economics Club, 1, 2, 3, 4. V.
 Pres., 4.
- ROHL, MARTHA T.**.....Marquette
 Kindergarten Club, 2, 3, 4.
 Newman Club, 1, 2, 3, 4.
 Chorus, 2, 3, 4.
- ROSTEN, PAUL**.....Negaunee
 Commercial Club, 1, 2, 3, 4. Pres., 2,
 Treas., 3.
 Senior Class Booklet.
- SAITZ, VALERIE A.**.....Dollar Bay
 Newman Club, 1, 2, 3, 4.
 Art Club, Pres., 4.
 Mathematics Club, 1.
- SARGENT, CLARENCE J.**.....Negaunee
 Math. Club, 2, 3, 4. Pres., 4.
 Intramural Basketball, 2, 3, 4.
- SARTO, ANGELINE**.....Bessemer
 Newman Club, 1, 2, 3, 4.
 Minervan Debating Society, 3, 4.
- SIMI, BERTHA M.**.....Nisula
 Transfer from Suomi College, Hancock,
 Michigan.
 Chorus, 3.
 Lutheran Student Association, 3, 4.
 Minervan Debating Society, 4.
- SOLI, CARL J.**.....L'Anse
 Phy. Ed. Club, 1, 2, 3, 4.
 Football, 1, 3, 4.
 Basketball, 1, 2, 3, 4. Captain, 4.
 Track, 1, 2, 3, 4. Captain, 4.
 Tri Mu Fraternity, 1, 2, 3, 4.
 Northern Brightlights, 1, 3.
- STANAWAY, ALICE M.**.....Ishpeming
 Commercial Club, 1, 2, 3, 4.
 Math. Club, 1.
 Lutheran Students Association.
 Chorus.
- SULLIVAN, MARIAN M. (Winter)**
 Traverse City
 Commercial Club, 1, 2, 3, 4. Treas., 1.
 French Club, 1, 2.
 Tau Pi Nu Sorority, 1, 2, 3, 4. Treas.,
 1, V. Pres., 2, Pres., 3.
- SUSAN, STANLEY E.**.....Marquette
 Men's Glee Club, 1, 2.
 Orchestra, 1, 2.
 Chorus, 1, 2, 3, 4.
 French Club, 1, 2.
 Drama Club.
 News Staff, 2.
 Jr. Class Play.
 Music Club, 4.
 Cambium Club, 4.
 Wesleyan Guild Pres., 1.
- TAYLOR, ELEANOR M.**.....Iron Mountain
 Kindergarten Club, 2, Sec., 3, 4.
 Forum Debating Society, 2, 3.
 Music Club, 4.
 Delta Sigma Nu, 2, V. Pres., 3, 4.
 Chorus, 3, 4.
- TREBILCOCK, GEORGE R.**
 National Mine
 Tri Mu Fraternity, 1, 2, 3, 4. Pres., 4.
 Basketball, 2, 4.
 Track, 2, 3.
 Northern Brightlights.
- TROSVIG, JAMES (Winter)**.....Ishpeming
 Commercial Club, 1, 2, 3.
- WACKER, ELEANOR R.**.....Manistique
 Transfer from Yankton College, S. D.
 Gamma Phi Alpha Sorority, 3, 4.
 Chorus, 3, 4.
- WEHMANEN, ROY W.**.....Marquette
 Football, 2, 3, 4.
 Tri Mu Fraternity, 2, 3, 4. Sec., 3.
 Industrial Arts Club, 1, 2, 3, 4. Pres.,
 4.
 Phi Epsilon, 2, 3, 4.
 Men's Union V. Pres., 4.
- WHIPPLE, KENNETH A.**.....L'Anse
 Industrial Arts Club, 1, 2, 3, 4.



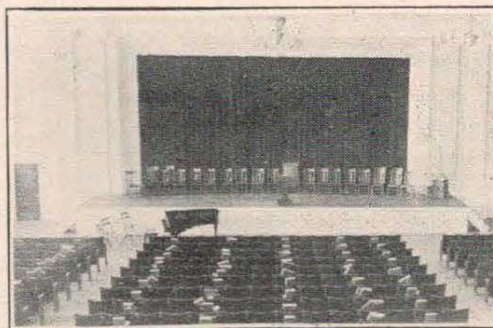
(Left to right)—Verl Wills, Olive Ann DesJardins, Edwin McGuire, Helen Rentenbach.

WIECIECH, EDWARD S......Harris
 Football, 1.
 Intramural Basketball, 2, 3, 4.
 Newman Club, 1, 2, 3, 4.

WILLIAMS, RUTH C......Marquette
 Drama Club, 1, 2, 3, 4. Sec.-Treas., 3,
 Pres., 4.
 Forum, 1, 2.
 Senior Class Sec.
 Poetry Reading Contest, 3, 4.
 Junior Class Play.
 Delta Sigma Nu, 1, 2, 3, 4. V. Pres.,
 4.

WILLS, VERL E......Palmer
 Football, 1.
 Basketball, 1.
 Track, 1, 2.
 Phy. Ed. Club, 3, 4.
 French Club, 1, 2.

WILSON, J. ALFRED.....Gwinn
 Industrial Arts Club, 1, 2, 3, 4. V.
 Pres., 2.
 Tri Mu Fraternity, 1, 2, 3, 4.
 Northern Brightlights, 2, 4.



CLASS HISTORY

YEAR 1935-36

September—

- 23—Our big day! Freshman Day—we are overwhelmed at the greatness of Northern's corridors.
- 24—Upperclassmen take pity on us poor freshies on Registration Day and tip us off as to the "snaps" and "pipes".
- 25—Classes Begin—we realize our assignments will be a trifle longer than they were in high school.
- 27—The Faculty gives us all a reception—(had a real swell time doing the Virginia Reel too.)
- 28—Ypsi vs. Northern—a safety brings victory to Northern.

October—

- 1—Faculty Feeds Northern Men—President Pearce suggests a run around the track to stimulate appetites. (Can't tell us those appetites needed stimulating—we know what men do to food.)
- 14—Assembly—we hear from President Pearce.
- 24—Co-ed Get-together—we make chrysanthemums to wear at homecoming.
- 25—Pep Meeting—Dr. Hunt leads the snake dance at night.
- 26—Northern takes a beating.
- 28—Movies—Audrey Dewitt of the Conservation Department shows us pictures of Isle Royale.

November—

- 1—Northerners don new personalities at Cegmer Seg Costume Ball.
- 4—Assembly—Barton Rees Pogue, Poet.
- 11—Men's Glee Club appear on Armistice program.
- 22—Thetas display farmyard personalities in the corridor.
- 25—Award Assembly—Mr. Hedgcock reminds athletes to keep up in their studies (where have we heard that before?) Faithful frosh lads have thrill of filing across the stage.

December—

- 3—Assembly—Alberto Salvi and Company. (He sure could pluck those strings!)
- 6—Sophomores entertain at prom against a setting of Venetian canals and bridges.
- 7—Alumni play Northern—our men make debut in new green rayon trunks and gold shirts.
- 9—Assembly—Chicago Civic String Quartet.
- 14—Faculty decides to experiment and do away with finals. (No objection as far as we're concerned.)
- 15—Christmas Concert.

1936

January—

- 6—Enrolling for our second term, finding we can still make mistakes.
- 16—Chief Eagle Plume, during a lyceum number, demonstrates the art of wife catching.
- 24—First game for Frosh basketball team, stars were Aho, La-Cosse, Northey, and Soli—incidentally they won.
- 28—Men's Get-together, George Jaaksi coming out second best in a ping-pong tourney.

February—

- 3—Initiation of the college's new movie machine with a sound film.
- 6—Girls' Get-together. Chili—a radical change from the usual menu! No need to say who cops prize.
- 19—Sterling Magicians, remember that guillotine?
- 28—Junior Prom. Theme, "When day is done" all Juniors are worn out.
- 28—Last Frosh game, march through eight games without a defeat, showing championship material.
- 29—Leap Year. All femmes out gunning—and the team is out of town.

March—

- 18—Phy. Ed. demonstration, first appearance in public of the girls' new gym suits.
- 19-21—U. P. basketball finals held in gym to decide supremacy in each class.

April—

- 16—Tri Mus present "Northern Brightlights", the big feature is the vote for the new school song, with the "Fight Song" coming out on top.
- 29—Assembly speaker Major John L. Griffith, athletic director for the Big Ten, guest speaker at Men's dinner also.

May—

- 4—Year's outstanding lecture, Charles E. Lounsbury, noted Chicago Prosecutor, speaking on "Death of a Thousand Rackets".
- 6—Girls' Glee Concert.
- 13—Girls' League Banquet. Jill Edwards speaking on "Personality Pointers" shows us how to relax, perhaps what we need is how to un-relax.
- 18—Reino Luoma, young pianist, astounds us with his playing.
- 20—Band Concert.
- 23—We take a licking from Tech in last track contest, Northey brings in a first in 100 yard dash.

June—

- 1—Russell Wright tells us about "Germany under Hitler". (Four years ago and that man is still sowing his wild oats.)
- 5—Rush. We won. Then drag ourselves in a parade and to a dance to show how happy we are!

1939=====SENIOR CLASS=====1939

- 11—Girls' League elects officers Helen Derleth and Hazel Elson to represent us next year.

FALL TERM 1936

September—

- 21—Men's Union and Girls' League warn large freshman class against high pressure Sophomore salesmen. (Revenge, don't y'know.)
22—Slowly we catch on to the figuring up of term hours and term credits in the enrollment process.
23—Classes Begin—we have a little more assurance than we did last year.
25—Faculty Social—upperclassmen (that includes us) conduct the freshmen on a faculty introduction tour.
26—Northern Bows to Oshkosh—score 6-0.
28—Kryl's Symphony Orchestra—we'll always remember the picturesque little master of the cornet.
29—Men re-establish their pasty capacity at the Men's Get-together.

October—

- 2—Delta Social Evening—fall leaves, and peanuts add to the football spirit.
7—Dr. Halverson prepares to film life at Northern. (Wait till the Freshmen see themselves on the screen in unposed poses.)
9-10—Homecoming brings the usual cold sweeping windy weather—we brave through with a 13-7 over our friends the Tech boys.
15—Beta Hunters Ball—Northern takes advantage of hunting season and turns out to bag a "dear."
19—Glee Clubs and Orchestra send out an S. O. S. for vocalists and cellists.
21—Freshmen test their intelligence by trying the Army Alpha.
22—Newcomers to Northern are tipped off about the mild winter they can expect up here.
24—Northern duplicates victory over Tech.
26—Assembly.—Cadman presents a program of his own selections. (The girls in the glee club won't forget "Snowflakes at My Window").

November—

- 4—We elect the following to lead our class:
President—Bob Northey.
Vice President—Walter Carlson.
Secretary—Hazel Elson.
Treasurer—Mary Harvey.
10—Girls' Get-together—some new dramatic artists were brought to light in "The Elocution Class of 1900".
11—Armistice Day Program.
18—The General Office issues a notice of lost and found articles—(we still wonder who that book "The Tower Treasure" of the Hardy Boys Series belonged to.

1939 **SENIOR CLASS** 1939

- 20—Familiar oinks, gobbles, squeals, and clucks greet us from the foyer—you guessed it—The Theta Feather Party.
- 24—Hazel Elson, Dorothy Paull, Helen Parvianen, Ishpeming volleyball sharks, are defeated by the Negaunee co-eds.

December—

- 2—Some of us star in the "Rush" movies presented by Dr. Halverson. Jane Kitzman sure had control over that hoop.
- 3—"Harvey House" and "See and Saw" seem to be definitely on the outs.
- 13—Christmas Cantata—the orchestra and chorus give a sigh of relief after the program—enough is too much or something.
- 16—Vacation—after some "deuzy" exams. (Guess the experiment of doing away with exams couldn't have gone through.)

1937

January—

- 9—Basketball—Ironwood 33, Northern 46—Aho stars as high point man.
- 12—Slim Williams lectures on "Alaska—Our Last Frontier".
- 19—Men's Get-together; none went away hungry.
- 26—"Les Jou Joux" the Ivan Markoff toe dancers.

February—

- 5—Taking Tech for a ride to the tune of one point was fun! Score, Tech 29—Northern 30.
- 15—Women's debating team selected by Mr. Roberts includes Mary Harvey and Hazel Elson.
- 11—Girls' Get-together; Deltas cop prize.
- 20—Those black things in the hall are going to be bulletin boards not mirrors, and are not placed there for co-eds' final dress appraisal before dashing to class.

March—

- 1—George Raiguel, world observer, predicts European clash.
- 11—Rainbow dinner for girls, even the pots of gold were eaten, evidence of their voracious appetites.
- 19—Our last Phy. Ed. demonstration.
- 22—Orchestra Concert.

SPRING 1937

April—

- 5—Spring term begins. "Ambition, where art thou?" Dr. Bowman returns to head the English Department.
- 16—Theta Minstrel Show.
- 18—Coach calls Northern trackmen.
- 23—Co-ed Masquerade Party—the Knutson sisters, as Alley Oops and wife, ran off with the prize.

1939 **SENIOR CLASS** 1939

25—We find out some of our class have very alluring second names:—

Marjorie **Flora** MacLean.
Myrtle **Lena** Haupt.
Clara **Josephine** Karas.
Martha **Lillie** Mehnert.
Ruby **Johanna** Price.

30—Junior Prom—in a marine setting.

May—

- 6—Girls' Glee Club Concert—the seniors in the sextet, Hazel, Jane, and Clara do their part in putting over "Stop Dat Buzzin" and "Robin in the Rain".
- 8—Track Meet—Northern downs Engineers with a 78-44 victory —Jim Soli's vault victory wins plaudits of the track fans.
- 10—Assembly—School for the Blind.
- 13—Men's Union Dinner—Northey speaks on theme, Northern—Model 1937.
- 22—U. P. Music Festival—Northern's music and phy. ed. majors are kept busy giving information and first aid to the youngsters.
- 26—Betty Alexander and Olive Ann DesJardins are elected to the Student Girls' League Council.

June—

- 4—Rush Day—"we" take a beating.
- 9—Award Assembly—athletes and debaters win awards. Hazel Elson and Mary Harvey merit theirs in debate.
- 10—Junior Class Play, "Mary the Third".
- 14—Seniors Clown in Circus Acts—peanuts galore! (I'd sure hate to be the ones who cleaned that floor.)
- 18—School Closes.
- 19—Senior Reception.
- 21—Commencement.

FALL 1937

September—

- 21—200 new freshmen throng Northern's corridors. Miss Gilbert, Miss Hess, and Miss Carlberg are new additions to the faculty.
- 24—Students get together at the Faculty Mixer—each tries to put the picture puzzle of Northern together.
- 25—Mr. Miserez comes to substitute for Professor Bowman who leaves for Florida.
- 28—Men's Union Get-together—Carl Judy, Frank Paull, and Glenn Hunter display abilities on the horizontal bar.

October—

- 2—Northern is defeated by Ypsi, but wins 20-19 from Oshkosh —the first victory over them since 1929.

- 6—Students and professors enjoy Bible's Animal Circus—Sally Rand, the monkey and the little diving dog steal the show.
- 9—Central defeats Northern 32-0.
Miss Ayres coaches sophomore and junior girls in field hockey.
- 21—Girls' Get-together—Pavlovas Ruth Williams, Ruth MacDonald, and Clara Karas interpret the finer points of ballet.
- 22—Homecoming—a success in every way.
- 23—Northern wins a 9-0 victory over Tech. Northern co-eds ditch steadies to give the engineers a break.
- 25—Freshmen take a new intelligence test—wonder how we'd rate on this one?
- 27—Class Organization Meetings.

November—

- 1—Our new class officers are:
Ed. (Mickey) McGuire—President.
Leslie Pengelly—Vice President.
Hazel Elson—Secretary.
Viola Rosevear—Treasurer.
- 8—20 new Basketball aspirants take to the court. Lettermen from last year are Soli, Northey, Aho, Trebilcock, LaCosse.
- 9—Assembly—Charles Eagle Plume.
- 25—Thanksgiving Vacation—"Ah,—for a real meal!" (Only those who batch will appreciate that remark.)

December—

- 3—Sophomore Prom set in a Grecian Garden.
- 4—We hear alibis from faculty men for not bagging their deer.
- 12—Christmas Concert.
- 15—Everyone receives a little red and white Santa as a remembrance of the Christmas Party in the foyer.

1938

January—

- 7—Basketball; Northern 39, Ironwood 33.
- 8—Basketball; Northland 52, Northern 42.
- 14—Basketball; Northern 48, Jordan 45.
- 21—Basketball; Northern over Tech 29, We 46.
- 22—Gillette and his chamber orchestra, with an electric organ plays some of his own compositions in assembly.
- 24-26—Big storm—no school.
- 29—Basketball; Central 55, Northern 46.

February—

- 4—Basketball; Tech avenges defeat but it is a close one; Tech 36, Northern 34.
- 17—Basketball; Central 31, Northern 23.

- 17—Girls' Get-together, change from routine—no skits; this time it's a play. Combination of Theta Minstrel and Tri Mu Brightlights.
- 18—Basketball; Northern 28, Ypsilanti 26.
- 19—Basketball; Wayne 54, Northern 35.
- 21—Governor Murphy speaks to a crowded assembly.
- 22—Vetort shows what Northern boys are made of, KO's Johnny Kay—with a broken thumb. Incidentally Fran is a fighter or should be say boxer.

March—

- 1—Hedley Hepworth, an English dramatist, shows us how to drop our "h" 's.
- 3—The Mus and Thetas battle again for the supremacy of a little brown jug, the Mus keep it.
- 17-19—U. P. Regional Tourney (basketball). Mr. McClintock managing it as usual.
- 15—The Co-ed party, no men allowed; Olive Ann DesJardins, Ethel Knutson, and Clara Karas receive prizes for costumes.
- 20—Orchestra Concert.
- 21—Assembly, the Master Singers, a Male Sextette.

SPRING 1938

April—

- Snowstorms, winds, and freezing temperatures delay the "spring fever epidemic".
- 18—Assembly—Jerold Frederic, pianist.
- 22—The Tri Mu Brightlights—will anyone ever forget that chubby little number in the chorus?
- 29—Juniors use modern idea for their prom—dancing on a desk.

May—

- 3—Girls' Glee Club Concert.
- 5—Kappa Delta Pi elect new officers:
 President—Walter Carlson.
 Vice President—Ray Larson.
 Secretary—Hazel Elson.
 Historian—Ada Hosking.
- 10—College Band Concert.
- 17—Girls' League Banquet—Mrs. Keaton carries "photographic theme" through with her picture display.
- 18—Girls' Glee Club travels to the Copper country—were we embarrassed to find our program dates had been mixed!
- 19—Warden Gries speaks at Men's Union Banquet.

June—

- 3—Rush Day! The sophomores' egg throwing technique is improving. The Tau Pi Nus come through with the float prize.

1939=====SENIOR CLASS=====1939

9—Junior Class presents "Spring Dance". Actors and actresses who show their dramatic abilities are:

Walter Carlson	Marge MacLean
Ed. McGuire	Ruby Price.
Art McCombie	Ethel Knutson
Mary Harvey	Noble Hatch
Gwen Bryce	Viola Rosevear

12—Baccalaureate.

13—Seniors go Hollywood at their Class Program.

17—Faculty Plays to Graduating Class.

18—The 1938 Class bids farewell to Northern—we juniors begin to realize our time is drawing near. Woe is me!

FALL 1938

September—

19—Freshman Day! Assemblies, conferences, movies, and dance fill yearlings' day.

New faculty members include: Miss Thorpe, head of the Art Department; Dr. L. S. West, head of the Biology Department; Miss Lucille Marker, who will take the position left vacant by Miss Carlberg's departure.

24—Football—Northern wins 13-0 from Oshkosh.

27—Northern men eat 35 dozen pasties, 4 bushels of apples at Faculty Feed.

October—

5—Mr. and Mrs. Benjamin Lovett, of the Ford Schools Dance Department, demonstrates ballroom etiquette with aid of the phy. eds. as subjects.

Northern issues a telephone directory for our convenience. (The girls can expect anonymous calls now.)

6-7-8—M. E. A. Convention.

10—Assembly—Juanita Hansen warns students of the drug menace in the United States.

15—Football—Northern gets trimmed by Ashland, 19-0.

20—Co-eds Attend Witches Rally—with witches heckling around everywhere, it was pretty hard to tell which witch was which.

21—Homecoming Pep Assembly.

22—Northern and Tech football men appreciate hamburger feed after game in zero weather—incidentally Northern won—13-0.

November—

2—Class Organization Meetings.

3—The "News" presents spotlihter Dot Paull.
Sorority rushing season ends.

7—Assembly—Erick Sorantin, violinist.

12—Football; Northern vs. Ypsilanti—Bob Northey, Roy Wehmanen, Glen Hunter, Fred Bernhardt, Irving Jadin, Ed. La-Casse, Francis Vetort, and Jim Soli play last game at Northern.

1939=====SENIOR CLASS=====1939

- 17—Miss Madill takes position as librarian, Miss Gilbert leaves for Washington.
- 23—Thanksgiving Vacation—a boon to the book weary.
- 9—Class Election Results:
President—Ray Larson.
Vice President—Fred Bernhardt.
Secretary—Ruth Williams.
Treasurer—Claire Cashell.
- “Every Inch A Gentleman” Soli gets the Spotlight and is selected basketball captain for the 1938-39 season.
- 21—Deadeye Dicks Butler and Hurst bag a deer—finally!

December—

- 2—Students revel amidst arctic lights and ice at Sophomore Prom.
- 3—Alumni trim Varsity—34-27.
- 5—Mary Harvey and Ruth Williams do their bit in “Small Town Girl” presented by the Drama Club.
- 8—Northern defeats the Bearded Aces.
- 13—We experience our last Christmas Party as students of Northern.
- 14—Christmas Vacation—exams are over—only our cards to anticipate.

1939

January—

- 6—Basketball; Eau Claire 58, Northern 34.
- 9—Russell Hoogerhyde, national archery champion, lectures and demonstrates his art. Robin Hood had something there, but we prefer the G-men, a revolver is so much simpler to carry.
- 14—Basketball; Northern 57, Northland 44.
- 17—Novohoma Club, the Home Economics Club under a new name.
- 20—Tech takes us for a loss. Score—Tech 35, Northern 32.
- 30—Max K. Gilstrap, lecturer, whistler (bird imitator) naturalist, has all men and some women (on the sly) whistling, proving that imitation is the sincerest flattery.

February—

- 3—Basketball; Jordan 56, Northern 32.
- 4—Home Administration House, an innovation, the girls “keep” house and practice for future use. Fellows take notice!
- 7—Cambium Club, a new biology organization.
- 8—Valentine tea for Seniors—more boys in the kitchen “helping”.
- 17—Seniors end up second in intra-mural basketball sked.
- 16—Basketball; Central 35, Northern 22.
- 17—Basketball; Ypsi 36, Northern 28.
- 18—Basketball; Wayne 84, Northern 39.
- 20—Mr. Hedgcock announces the team’s nickname is the “Wild-cats”; suitable enough, isn’t it; they do put up a fight.

March—

- 9—Girls' League Circus Supper—no prizes given so we didn't have to worry about competition from a certain sorority.
- 16-18—U. P. Regional basketball tourney, last chance for some of us to holler "chocolate bars, chewin' gum".
- 20—Coffer-Miller players present the "King's Dilemma". Around the end of the term the King's problem seemed mighty small to some of us.

April—

- 3—Registration Day. Some of us pack our schedules to meet June graduation requirements—others relax with practically blank schedules.
- 5-10—Assembly. King Lan Chew, Chinese dancer.
- 11—Reception for debaters.
- 12—Assembly. Hampton Quartet.
- 14—Theta Harlem Jamboree.
- 17—Music Club Program. "Curt" Glanville proves his worth as a future A number 1 music supervisor.
- 24—Assembly. Clarence Sorenson—"Propaganda in the News". Mr. Bert Sandell becomes new Sociology Department head.

May—

- 1—Drama Club presents a melodrama, "Pot Boilers"—Noble Hatch does his stuff as the temperamental play director.
- 5—Rita Gaviglio wins recognition downstate in poetry contest.
- 9—Girls' Glee Club Concert. Northern girls display talent and results of fine training in colorful spring concert.
- 13—Northern's Track team is defeated by Tech 65-57.
- 16—Student Girls' League Banquet. Dot Paull presides at anniversary of Northern's fortieth birthday.
- 18—Men's Union Banquet. Lots of turkey and less talking is drawing card for men.
- 29—Senior Assembly. We farce the life of a great farce—"Hitler" along with some good entertainment.
We rejoice with each senior as he gets his job—and wonder when or if we'll get one.

June—

- 2—Rush Day.
- 8—Junior Class presents 1938 Pulitzer Prize Winner, "Our Town".
- 11—Baccalaureate. In our caps and gowns we actually realized that a week from today we'll be graduates of Northern.
- 16—Faculty Reception—we all deck out in our finery to leave a last good impression with the faculty.
- 17—Commencement—the end of the beginning—whatever happens next we're ready to face it—somehow, we hope!

1939 **SENIOR CLASS** 1939

AUTOGRAPHS

