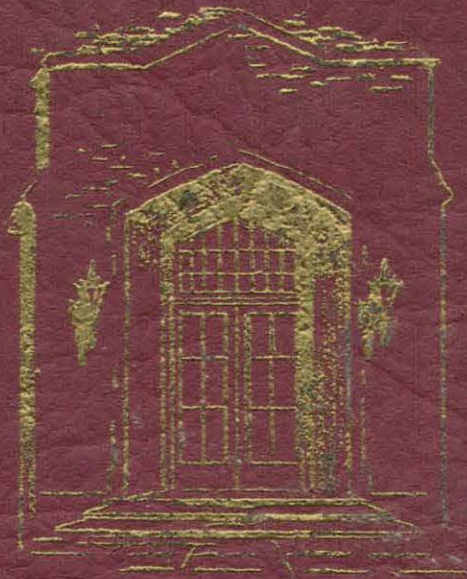
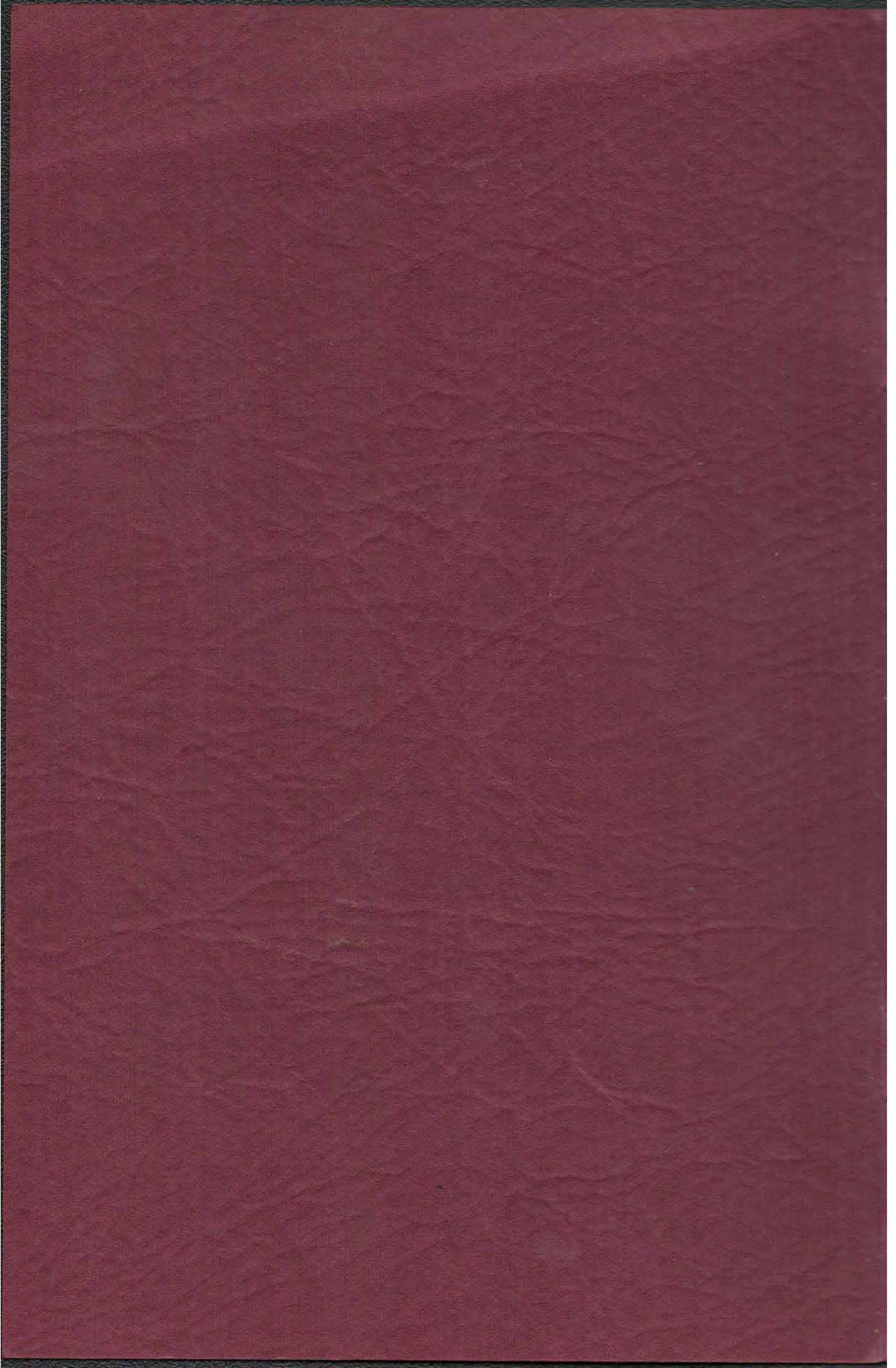


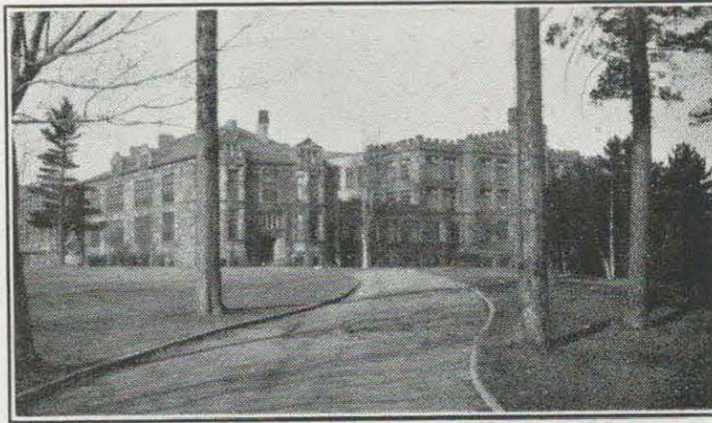
SENIOR BOOKLET

1938



NORTHERN STATE TEACHERS COLLEGE



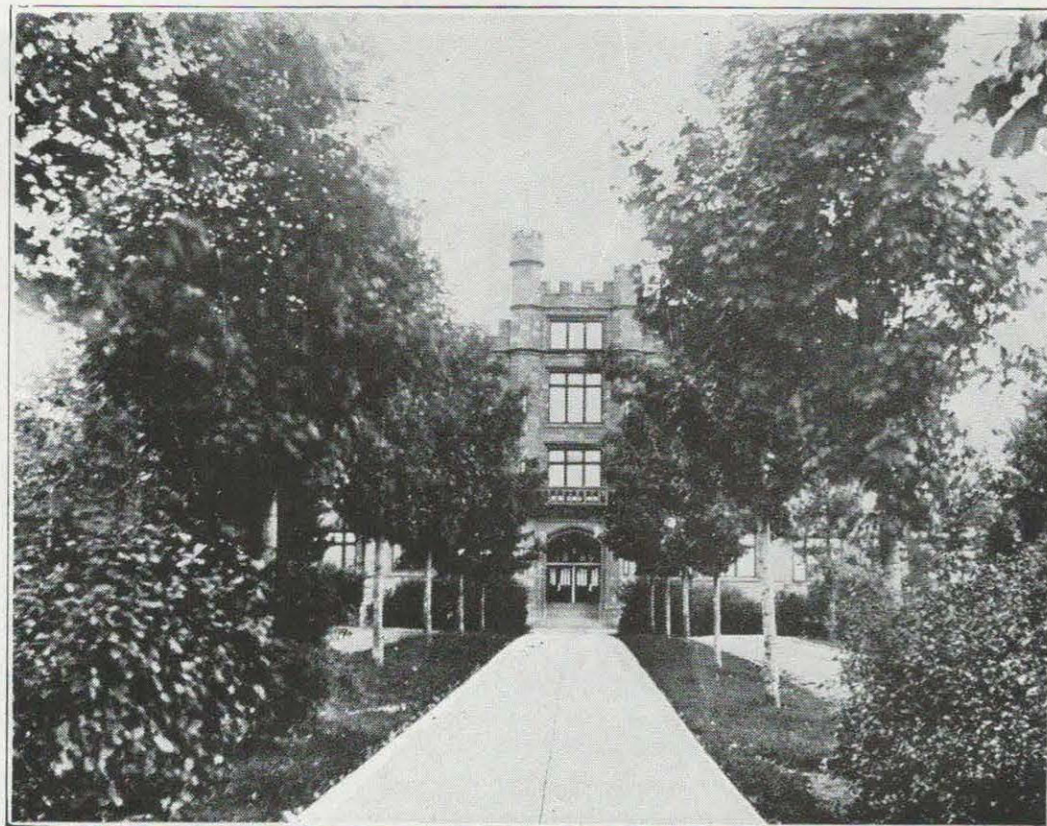


CLASS WEEK

Baccalaureate.....	Sunday, 3:00 P. M., June 12
Invocation and Benediction.....	Rev. F. J. Clifford
Charge to Seniors.....	Pres. W. H. Pearce
Senior Class Assembly.....	Monday, 9:50 A. M., June 13
Senior Class Picnic.....	Monday, 1:30 P. M., June 13
Faculty Reception to Graduating Class and Alumni.....	Friday, 8:30 P. M., June 17
Commencement.....	Saturday, 10:00 A. M., June 18
Speaker.....	John G. Rockwell
	Comm. of Education, State of Minnesota

BACCALAUREATE EXERCISES

March, Pomp and Circumstance.....	Elgar
God is Love.....	Shelley
Trio—Florence Shutey, Ruth Harris, Ruth Smoker	
Invocation.....	Rev. F. J. Clifford of the First Methodist Episcopal Church
Beside the Still Waters.....	Hamblen
	Trio
Address, Be of Good Courage.....	President Webster H. Pearce
Benediction.....	Rev. F. J. Clifford



CLASS WEEK COMMITTEES

Senior Class Booklet Staff

Editor, Howard Anderson

Associate Editor, Helen Eklund

Photography, Kimball Hatch

Business Managers, Clarence Vinge and Norman Olson

Historians, Dorothy Diedrich and Edwin Erdmann

Senior Picnic

General Chairman, Glenn Wiggins

Transportation, William Kolkoski

Games, Harold Carpenter

Refreshments, Catherine Penberthy

Caps and Gowns

General Chairman, Roy Swanson

Clara Teague

Harold Wirkku

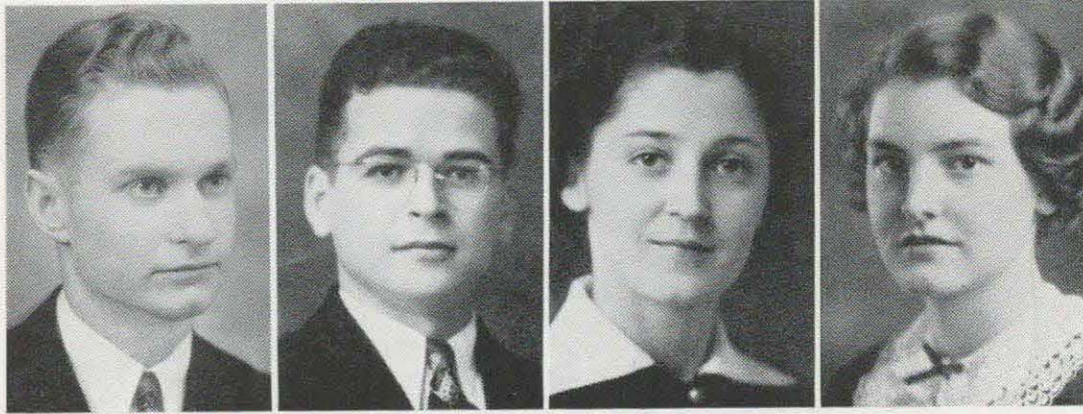
Kathryn King

Senior Assembly

General Chairman, Ellen Bennett

Stage Properties, Stanley Zera

Music, Marie Richards and William Kolkoski



CLASS OFFICERS

Walter Wallen	President	Ewen
Stanley Zera	Vice-President	Stambaugh
Medelyn Eggert	Secretary	Nahma
Kathleen Callow	Treasurer	Menominee

SENIOR ASSEMBLY

Monday, June 13, 9:50 A.M.

President's Address.....Walter Wallen

NORTHERN HOLLYWOOD Class Play

Author and Director.....Ellen Bennett

Cast of Characters

Big Shot.....	Floyd Carlson
Hip and Hoof Team.....	Kenneth Stanley, Catherine Penberthy
Voice of Sorrow.....	Ellen Bennett
The Gilbert Gazooks.....	Depressional Tumblers
Eileen LaFave, Isabelle Steele, Kathryn King, Margaret Sullivan	
Suzy Schwizzlebaum.....	Mary Jane Manthei
Wheezy	William Kolkoski
Breezy	Alice Westman
Franchot Gable.....	Walter Abramson
The Alumnae Pedagogique Rooty-Hooters—	
Fern Bennett, Lysle Hutton, Marda Roberts	
The Hilly Willy Band.....	Group of Senior Musicians
Extras.....	Senior Class of 1938

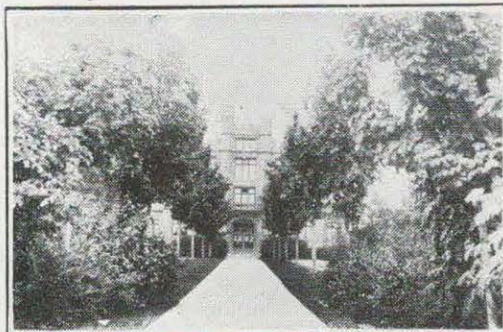


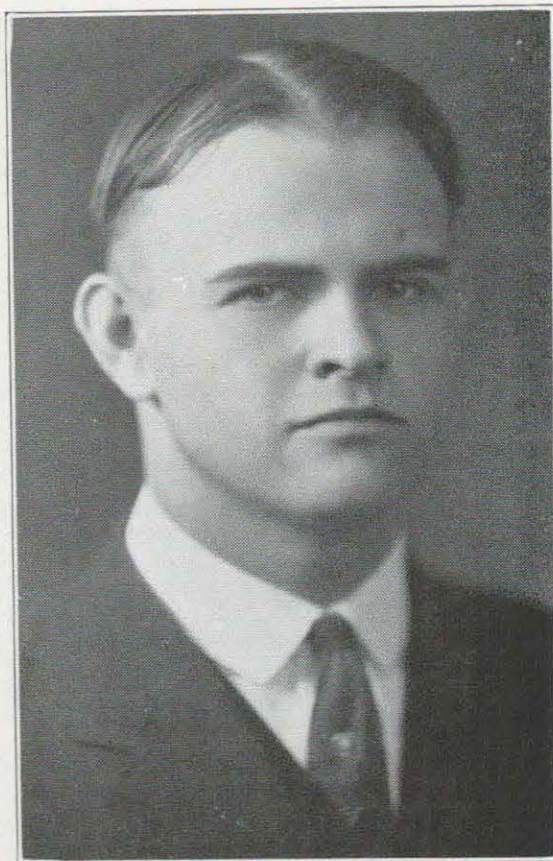
PRESIDENT WEBSTER H. PEARCE, A.M., M.Ed., LL.D.

With kindness, dignity, and understanding President Pearce has guided our class through our four years at Northern. As seniors we wish to express our sincere thanks for his leadership and help.

Under his administration we have felt the upward growth of Northern in spirit, instructional efficiency, and genuine cooperation. His office doors have never been closed to us whether we were freshmen or seniors, in trouble or success. He has typified the new democracy that should exist everywhere.

We wish him continued success, health, and happiness. We hope that his continued work in the interests of Northern will bring to him an even greater measure of advancement to our college for we know and feel that those interests are always nearest to him.



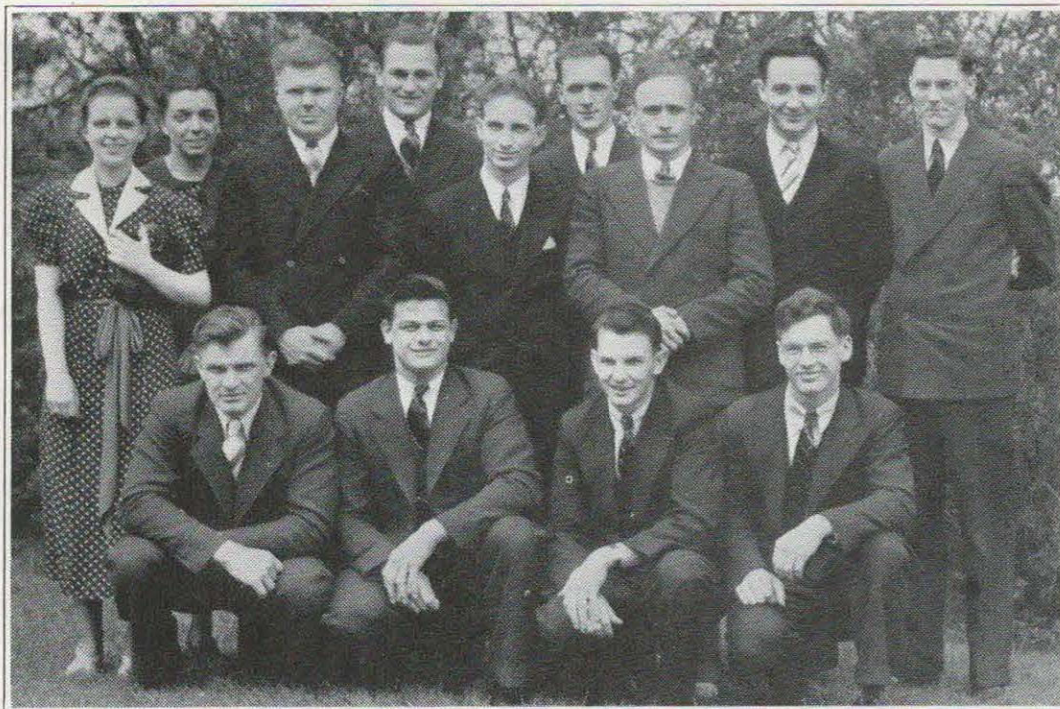


CHARLES S. CLUCAS, B.S., A.M., Ph.D.

As seniors at Northern we have had a need of smooth, efficient class organization. Under the leadership and guidance of Dr. Clucas we have had such organization. We know that his ability to foresee difficulties before they arise, his sound judgment, and his careful, patient management has been responsible for the success we have enjoyed.

As we swing into the final week of activity here, we pledge continued cooperation with him in all his work. This is the best way for us to show our appreciation of his work in our behalf. We wish him health, joy, and the security that comes from the feeling of a task well done. We hope that we can so continue to live that he will feel a pride in having guided us in our final year at Northern.





Front (left to right)—William Koski, Louis Contardi, Norman Olson, Kimball Hatch.
Center—Elvi Matero, Floyd Carlson, Clarence Vinge, Walter Abramson, Eino Michelson, Kenneth Stanley. **Back**—Ellen Thorpe, Paul Koski, Egan Ringwald.

SENIORS

WALTER J. ABRAMSON.....Iron River

Junior and Senior High School, A.B.
 Men's Discussion Club, 3, 4
 Glee Club, 3, 4.
 Drama Club, 2, 3, 4. Secretary-Treasurer, 2.
 Lutheran Students' Association, 2, 3, 4. Treasurer, 2.
 Chorus, 2, 3.

MARJORIE K. ALLEN.....Ishpeming

Early Elementary, B.S.
 Phi Kappa Nu Sorority, 2, 3, 4.
 Kindergarten Club, 1, 2, 3, 4.
 French Club, 1, 2, 3, 4.

EDITHE ANDERSONForsyth

Commerce, B.S.
 Mathematics Club, 1.
 Commercial Club, 2, 3, 4. Secretary, 3.
 French Club, 3, 4.
 Minervan Debating Society, 3, 4.
 Lutheran Students' Association, 4.

HAROLD F. ANDERSON.....Marquette

Senior High School, A.B.
 Band, 1.
 Chorus, 1.

HOWARD B. ANDERSON.....
 Iron Mountain

Senior High School, A.B.
 Editor Northern News, 3, 4. News Staff, 2.
 Mathematics Club, 1, 2, 3. President, 2
 Debate, 4.
 Junior Class Vice-President.
 Discussion Club, 3, 4.
 Tri Mu Fraternity, 3, 4. Vice-Pres., 3
 Kappa Delta Pi, 3, 4.
 Phi Epsilon, 3, 4.

ROBERT ANDERSONNegaunee

Industrial Arts, B.S.
 Industrial Arts Club.
 Men's Glee Club.

WOODROW ANDERSON.....L'Anse**Industrial Arts, B.S.**

Industrial Arts Club.
Band
Men's Glee Club
Chorus
Men's Discussion Group, 4
Orchestra

JUNE BAEHR.....Iron River**Junior and Senior High School, A.B.**

Phi Kappa Nu Sorority, 1, 2, 3, 4
Ex-Teachers Club, 3

ELLEN BENNETT.....Iron Mountain**Junior and Senior High School, A.B.**

Kappa Delta Pi, 3, 4
French Club, 3, 4
Junior Class Play
Drama Club, 3, 4
Beta Omega Tau, 3, 4. President, 4
News Staff, 4
State Poetry Reading Contest, 4

FERN E. BENNETT.....Iron Mountain**Junior High School, A.B.**

Beta Omega Tau Sorority, 2, 3, 4
French Club, 1, 2, 3
Forum, 1, 3
Drama Club, 2, 3, 4
Chorus, 1, 2

ESTHER BENSON.....Iron River**Intermediate, A.B.**

Lutheran Students' Association, 2, 3, 4
Minervan Debating Society, 3, 4. Vice-President, 4

LLEWELLYN F. BRAMER.....Nahma**Commerce, A.B.**

Tri Mu Fraternity, 1, 2, 3, 4
Commercial Club, 1, 2
Newman Club, 1, 2, 3
Northern Brightlights, 2, 4

KATHLEEN CALLOW.....Menominee**Music, B.S.**

Tau Pi Nu Sorority, 2, 3, 4. Vice-President, 4
Forum Debating Society, 3, 4
Chorus, 2, 3, 4
Orchestra, 3, 4
Glee Club, 2, 3, 4
Senior Class Treasurer
Music Club Secretary, 4

FLOYD CARLSON.....Stambaugh**Junior and Senior High School, A.B.**

Football, 2, 3, 4. Co-Captain, 4
Basketball, 2, 3, 4
Vice-President Sophomore Class
President Men's Union, 4
Tri Mu Fraternity, 2, 3, 4. Secretary,
2 President, 3. Business Manager, 4

HAROLD CARPENTER.....Marquette**Junior and Senior High School, A.B.**

Alpha Delta Fraternity, 1, 2
Sophomore Class Vice-President
Band, 1, 2, 3, 4
Orchestra, 1, 2
Chorus, 1, 2, 3, 4
Glee Club, 2, 3, 4
Octette, 4
Track, 1, 3, 4
Men's Union Executive Committee, 2
French Club, 1
Mathematics Club, 1, 2, 3
Music Club, 4

LOUIS R. CONTARDI.....Iron River**Industrial Arts, B.S.**

Tri Mu Fraternity, 1, 2, 3, 4. President, 4
Industrial Arts Club, 1, 2, 3, 4
Northern Brightlights, 2, 4. Business Manager, 4
Varsity Football, 1, 2, 3, 4. Co-Captain, 3
Freshman Basketball Award
Varsity Basketball, 3, 4

IRA CLARK.....Marquette**Junior and Senior High School, A.B.****MARY DERLETH**.....Marquette**Home Economics, B.S.**

Beta Omega Tau Sorority, 1, 2, 3, 4
Forum Debating Society, 1, 2
Newman Club
Class Treasurer, 2
Student Girls' League Treasurer, 2

ELIZABETH RUTH DICKSON.....**Iron Mountain****Early Elementary, B.S.**

Delta Sigma Nu, 1, 2, 3, 4
Girls' Glee Club, 2, 3
Chorus, 2, 3
Kindergarten Club, 1, 2, 3, 4



Front (left to right)—Llewellyn Bramer, Ethel Gustafson, Kathleen Callow, Lysle Hutton, Llewellyn Riopelle, John Williams. **Center**—Florence Shutey, Angeline Magnino, Ruth Harris, Elaine Staples, Edithe Anderson, Margery Hawes. **Back**—Melba Hill, Ingrid Joukainen, Kathryn Larson, Madelyn Eggert, Helen Favero, Isabel Steele, Marda Roberts.

DOROTHY DIEDRICH.....Marquette

Home Economics, B.S.

Freshman Class President
 Student Girls' Council, 1
 News Staff, 1, 2, 3
 French Club, 1
 Cegmer Seg Sorority, 1, 2, 3, 4. Secretary, 2. Corresponding Secretary, 3. Vice-President, 4
 Newman Club, 4

ALFRED EDDY.....Rockland

Junior and Senior High School, A.B.

Tri Mu Fraternity, 1, 2, 3, 4. Vice-President, 4
 Mathematics Club
 President Junior Class
 Men's Union Executive Committee, 3, 4. Secretary, 4
 Sports Editor Northern News, 4

MADLEYN EGGERT.....Nahma

Commerce, B.S.

Tau Pi Nu Sorority, 1, 2, 3, 4. Secretary, 3
 Commercial Club, 1, 2, 3, 4. Secretary, 1. President, 3
 Secretary Senior Class

HELEN L. EKLUND.....Ishpeming

Home Economics, B.S.

Phi Kappa Nu Sorority, 1, 2, 3, 4.
 Treasurer, 2, 3. President, 4
 President Student Girls' League, 3
 Associate-Editor Senior Class Booklet

EDWIN ERDMANN.....Iron Mountain

Junior and Senior High School, A.B.

Men's Discussion Club, 3, 4
 Intercollegiate Debate, 4
 Kappa Delta Pi
 Senior Class Booklet Staff

HELEN FAVERO.....Negaunee

Intermediate, B.S.

Commercial Club, 1, 2, 3, 4. President, Spring Term, 2

WILLIAM H. FINKBEINER.....Negaunee

Senior High School, A.B.

Band, 1, 2, 3, 4
 Freshman Football
 French Club, 2
 Music Club, 4

ETHEL GUSTAFSON.....Marquette**Commerce, B.S.**

Commercial Club, 3, 4
Glee Club, 2, 3, 4
Chorus, 3, 4

ELLEN A. HAAPALA.....Chassell

Minervan Debating Society
Lutheran Students' Association

JEAN HANSEN.....Big Bay**Junior and Senior High School, A.B.**

Delta Sigma Nu Sorority, 1, 2, 3, 4.
Chaplain, 1. Secretary, 3, 4
Forum Debating Society, 1, 2
Lutheran Students' Association, 1, 2

RUTH B. HARRIS.....Calumet**Music, B.S.**

Delta Sigma Nu Sorority, 1, 2, 3, 4
Forum Debating Society, 1, 2, 3, 4.
Secretary, 3
Girls' Glee Club, 1, 2, 3, 4
Chorus, 1, 2, 3, 4
Orchestra, 1, 2, 3, 4

C. KIMBALL HATCH.....Marquette**Industrial Arts, B.S.**

Industrial Arts Club, 1, 2, 3, 4
Chorus, 3, 4
Junior Play Electrician, 3
Photographer, Senior Class Booklet, 4

MARGERY GRACE HAWES.....Ishpeming**Early Elementary, B.S.**

Girls' Glee Club, 1, 2, 3, 4
News Staff, 2, 3, 4
Kindergarten Club, 4
Chorus, 1, 2, 3

IRENE O. HEDMAN.....Republic**Early Elementary, A.B.**

Chorus, 3, 4
Lutheran Students' Association, 3
Kindergarten Club, 3
Gamma Phi Alpha Sorority, 3, 4

GERTRUDE HELINE.....Republic**Junior and Senior High School, A.B.**

Tau Pi Nu Sorority
Drama Club
Junior Class Play

MELBA HILL.....Wakefield**Intermediate, A.B.**

Minervan Debating Society, 3, 4
Lutheran Students' Association, 1, 2,
3, 4

GRETCHEN HOLMES.....Stambaugh**Commerce, B.S.**

Girls' Glee Club
Chorus
President Commercial Club, Fall Term,
4

LYSLE FRASER HUTTON.....Powers

Orchestra, 1, 2, 3
Forum Debating Society, 1, 2, 3
Society Editor, Northern News Staff, 3
News Staff, 1, 2
Drama Club, 1, 2, 3, 4. President, 3
Delta Sigma Nu Sorority, 1, 2, 3, 4
Junior Class Play

ALTON JOHNSON.....Marquette**Industrial Arts, B.S.**

Mathematics Club, 1
Industrial Arts Club, 1, 2, 3, 4
Alpha Delta Fraternity, 1, 2, 3

ARNOLD JOHNSON.....Carlshend**Industrial Arts, B.S.**

Industrial Arts Club

SUZANNE JOHNSTON.....Marquette**Early Elementary, B.S.**

Cegmer Seg Sorority, 1, 2, 3, 4
Kindergarten Club, 1, 2, 3, 4

INGRID JOUKAINEN.....Negaunee**Commerce, B.S.**

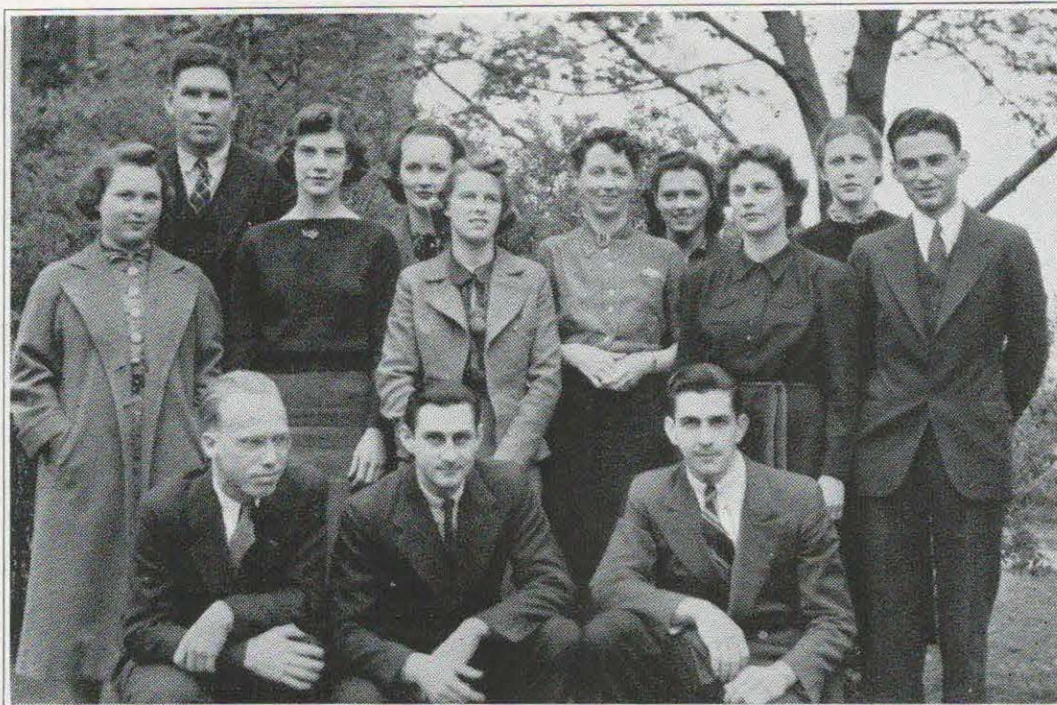
Commercial Club, 1, 2, 3, 4
Lutheran Students' Association, 4

ELEANOR L. JUNTILLA.....Calumet**Intermediate, A.B.**

Minervan Debating Society, 1, 2, 3, 4.
Corresponding Secretary, 3
Lutheran Students' Association, 1, 2,
3, 4
Phi Epsilon, 3, 4
Kappa Delta Pi, 4

EDNA KIELINEN.....Marquette**Commerce, B.S.**

Commercial Club
Phi Epsilon
Kappa Delta Pi



Front (left to right)—Howard Anderson, Albert Mercure, Wm. Van Cleve. **Center**—Constance Nadeau, Mary Jane Manthei, Catherine Penberthy, June Baehr, Dorothy Diedrich, Jack McDonald. **Back**—Harry Westrich, Mary Walsh, Marie Richards, Mary Derleth.

KATHRYN JEAN KING.....Iron Mountain
Early Elementary, B.S.

Tau Pi Nu Sorority
Kindergarten Club, Vice-President, 3.
President, 4
Minervan Debating Society, 3, 4. Secretary, 4
Newman Club

DOROTHY KINSMAN.....Ishpeming
Home Economics, B.S.

LILLIAN KNUTSON.....Newberry
Early Elementary, B.S.

Kindergarten Club, 1, 2, 3, 4. President, 3
Student Girls' League Vice-President, 3
Lutheran Students' Association, 2, 3, 4
Delta Sigma Nu Sorority, 2, 3, 4
Secretary Junior Class

WILLIAM L. KOLKOSKI.....Iron River
A.B.

Transferred from Michigan Tech.
Mathematics Club, 4
Music Club, 4
Band, 2, 3, 4
Newman Club, 4
Symphony Orchestra, 3

PAUL I. KOSKI.....Marquette
Industrial Arts, B.S.

Tri Mu Fraternity, 2, 3, 4
Industrial Arts Club, 1, 2, 3, 4. Secretary, 4
Football Awards, 1, 2, 3
Basketball Awards, 1, 2, 3, 4
Track Awards, 1
Northern Brightlights, 2, 4

WILLIAM G. KOSKI.....Champion
Commerce, B.S.

Football, 1, 2, 3, 4. Co-Captain, 4
Basketball, 1, 2
Track, 1, 2
Baseball, 1

EILEEN LaFAVE.....Negaunee
Early Elementary, B.S.

Phi Kappa Nu Sorority, 2, 3, 4. Secretary, 3
Physical Education Club, 2, 3, 4. Secretary, 2. Vice-President, 3. President, 4
Primary Club
Newman Club
Girls' Intramural

KATHRYN E. LARSONHoughton
Junior and Senior High School, A.B.
 Delta Sigma Nu, 1, 2, 3, 4. President, 3
 Kappa Delta Pi Vice-President, 4
 Phi Epsilon
 Orchestra, 1

ANGELINE ANN MAGNINO.....Calumet
Early Elementary, A.B.
 Gamma Phi Alpha Sorority, 1, 2, 3, 4.
 Treasurer, 3
 Secretary-Treasurer Mathematics Club,
 2
 Vice-President Newman Club, 3. Member,
 1, 2, 3, 4
 Treasurer Junior Class
 Kindergarten Club, 3, 4

MARY JANE MANTHEI.....Marquette
Intermediate, A.B.
 Dramatic Club, Secretary, Vice-President
 Northern News Staff, Make-Up Editor
 Chorus
 Forum Debating Society. President, 3
 Newman Club
 French Club
 Cegmer Seg Sorority, Secretary
 Student Girls' League President, 4
 Kappa Delta Pi
 Phi Epsilon
 State Poetry Contest, 4

ELVI MATEROBaraga
 Chorus, 3, 4
 Orchestra, 3, 4
 Minervan Debating Society, 3, 4

RUTH McCULLOUGH
Junior and Senior High School, B.S.

ALBERT MERCUREMarquette
A.B.
 Band, 1, 2, 3
 Chorus, 1, 2
 Orchestra, 1
 Glee Club, 1
 Newman Club, 1, 2, 3, 4
 French Club, 1, 2, 3, 4
 Mathematics Club, 1, 2, 3
 Music Club, 4

EINO S. MICHELSON.....Marquette
Junior and Senior High School, A.B.
 Drama Club, 2, 3, 4
 Men's Discussion Group President, 3,
 4
 Phi Epsilon, Vice-President, 4
 Junior Class Play
 State Interpretative Reading Contest, 4
 Debate, 2, 3

MARY LOU MORSE.....Ontonagon
 Beta Omega Tau Sorority, 1, 2, 3, 4
 Newman Club, 1, 2
 Commercial Club, 1
 French Club, 1

ROBERT MURPHYAhmeek
Junior and Senior High School, A.B.
 Theta Omicron Rho Fraternity, President,
 3, 4
 Kappa Delta Pi

CONSTANCE NADEAUMarquette
Home Economics, B.S.
 Chorus, 2, 3
 Forum, 1, 2, 3
 Delta Sigma Nu, 2, 3, 4

CLARA NORDSTROMAllouez
Early Elementary, A.B.
 Minervan Debating Society, 1, 2, 3
 Primary Club, 1, 2, 3. Treasurer, Fall
 Term, 3

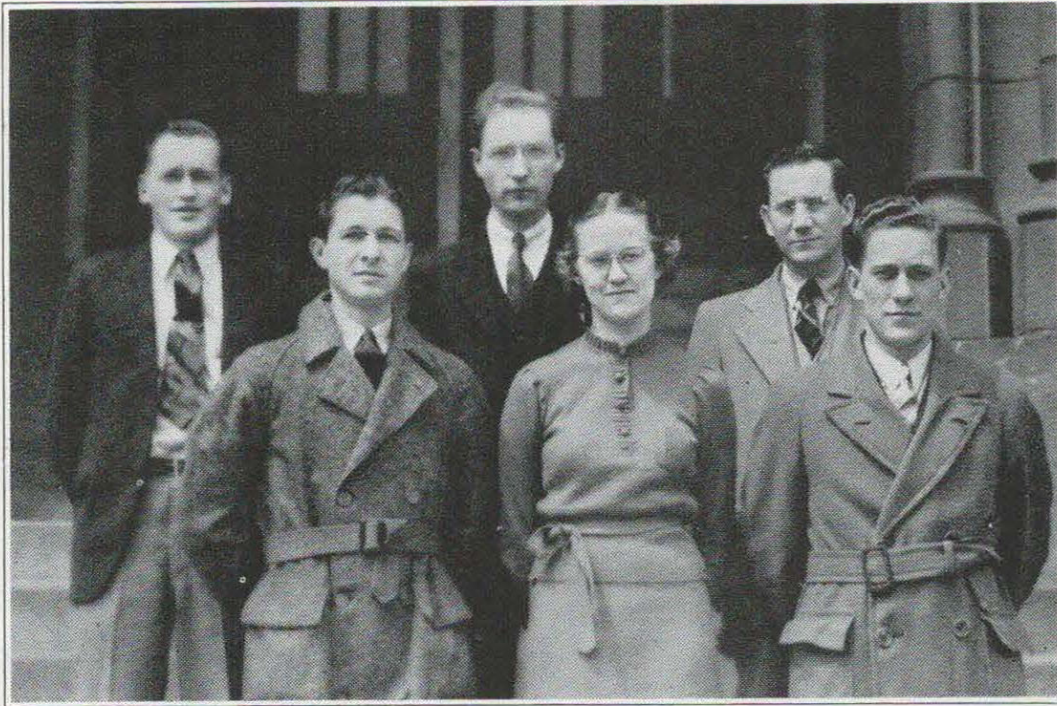
MRS. CLAUDIA M. SWANSON NUGENT
Early Elementary, B.S.

ELMER C. OJALA.....Marquette
Music, B.S.

SOFIA T. OJALA.....South Range
Intermediate, A.B.
 Chorus, 3, 4
 Glee Club, 4
 Minervan Debating Society, 4
 Gamma Phi Alpha Sorority
 Northern News Staff, 4
 Lutheran Students' Association, 3, 4

INGEBORG OLSONEwen
Intermediate, A.B.
 Primary Club President, 4

NORMAN OLSONIshpeming
Industrial Arts, B.S.
 Industrial Arts Club
 Men's Discussion Club
 Glee Club
 Co-Business Manager, Senior Class
 Booklet



Front—Robert Murphy, Helen Eklund, Paul Siegel. Back—Hero Appelberg, Robert Anderson, William Niemi.

PAUL W. OLSON.....Marquette

Industrial Arts, B.S.

Tri Mu Fraternity, 1, 2, 3, 4
 Industrial Arts Club, 1, 2, 3, 4
 Sophomore Class President
 Men's Union, Secretary-Treasurer, 2.
 President, 3. Vice-President, 4
 Football Awards, 1, 2, 3, 4
 Basketball Awards
 Track Awards, 1, 2, 3, 4

CATHERINE PENBERTHY.....Marquette

Home Economics, B.S.

Chorus, 3
 French Club, 1, 2, 3
 Cegmer Seg Sorority, 1, 2, 3, 4. Cor-
 responding Secretary, 2. Vice-Presi-
 dent, 3. President, 4

NORMAN O. PETERSON.....Gladstone

Junior and Senior High School, B.S.

Tennis, 2, 3, 4
 Basketball, 1
 Mathematics Club, 1, 2, 3
 Phi Epsilon, 2, 3, 4
 Kappa Delta Pi, 3, 4

MARIO N. RE.....Bessemer

Junior and Senior High School, A.B.

MARIE RICHARDS.....Marquette

Early Elementary, B. S.

Beta Omega Tau Sorority, 1, 2, 3, 4
 Newman Club, 1, 2, 3, 4
 Kindergarten Club, 3, 4
 Junior Class Play
 Chorus, 1, 2, 3
 Glee Club, 2, 3, 4

EVELYN RIDAN.....Wakefield

Early Elementary, B.S.

Primary Club, 1, 2, 3, 4. Vice-Presi-
 dent, 4
 Lutheran Students' Association, 1, 2,
 3, 4. Secretary, 4
 Phi Epsilon, 2, 3, 4. Secretary, 4
 Kappa Delta Pi, 3, 4. Historian, 4

EGAN RINGWALL.....Ironwood

Senior High School, A.B.

Transferred from Ironwood Junior
 College
 Editor Jaysee Journal, 2
 Stage Manager, "Masquers", 1, 2,
 President French Club, 1, 2
 Northern News Staff, 3, 4
 Kappa Delta Pi, 4

E. LLEWELLYN RIOPELLE.....Marquette**Junior and Senior High School, A.B.**

Basketball, 1
 Alpha Delta Fraternity, 1, 2. Secretary, 2
 Newman Club President, 3

MARDA MAE ROBERTS.....Anvil**Junior and Senior High School, A.B.**

Gamma Phi Alpha Sorority, 1, 2, 3, 4
 Corresponding Secretary, 2. President, 3, 4
 Forum Debating Society, 1, 2, 3.
 Treasurer, 2. Vice-President, 3
 Drama Club, 1, 2, 3, 4
 Junior Class Play

J. WILLIAM ROBERTSON.....Marquette**A.B.**

Band, 1, 2, 3, 4
 Glee Club, 1, 2, 3, 4
 Chorus, 1, 2, 3, 4
 French Club, 1, 2
 Music Club, 4

ELEANORE ROPELLE.....Vulcan**Intermediate, A.B.**

Glee Club, 4

VIOLA ROSEVEAR.....Laurium

Delta Sigma Nu, 1, 2, 3, 4. President, 4
 Drama Club, 1, 2, 3, 4. Vice-President, 4
 Forum Debating Society, 1
 Kindergarten Club, 3, 4
 Treasurer of Junior Class
 Junior Class Play
 Lutheran Students' Association

WILHELMINA A. SCHOBBER.....Ontonagon**Junior and Senior High School, B.S.**

Transferred in 1935 from College of St. Scholastica, Duluth, Minn.
 Newman Club, 3, 4
 Minervan Debating Society, 3
 Chorus, 3
 Glee Club, 1, 3
 Northern News Staff, 3

FLORENCE SHUTEY.....Calumet**Early Elementary, B.S.**

Minervan Debating Society, 1, 2, 3, 4.
 Treasurer, 3
 Girls' Glee Club, 1, 2, 3, 4
 Early Elementary Club, 3, 4
 Gamma Phi Alpha Sorority, 3, 4.
 Vice-President, 4
 Newman Club, Treasurer, 3
 Chorus, 2, 3

PAUL SIEGEL.....Marquette**Junior and Senior High School, A.B.**

Band, 3, 4
 Chorus, 1, 2, 3, 4
 Glee Club, 2, 3, 4
 Theta Omicron Rho Fraternity, 1, 2, 3, 4
 Drama Club, 3, 4
 Men's Discussion Club, 4

ELLEN SPECK.....Marquette**Intermediate, A.B.**

Transferred from Ogemaw County Normal, 1937
 Class President, 1

ALICE M. STANAWAY.....Ishpeming

Chorus
 Mathematics Club
 Lutheran Students' Association

KENNETH STANLEY.....Ontonagon**Junior and Senior High School, A.B.**

Symphony Orchestra
 Wesleyan Guild President, 4
 Music Club

ELAINE STAPLES.....Negaunee**Intermediate, B.S.**

Cegmer Seg Sorority, 1, 2, 3, 4
 Chorus, 1, 2, 3
 Orchestra

ISABEL STEELE.....Negaunee**Junior and Senior High School, A.B.**

Phi Kappa Nu Sorority, 1, 2, 3, 4.
 Corresponding Secretary, 2
 Student Girls' League Vice-President, 4

MARGARET SULLIVAN.....Maple City**Physical Education, B.S.**

Tau Pi Nu Sorority, 1, 2, 3, 4
 Physical Education Club, 1, 2, 3, 4.
 Treasurer-Secretary, 3
 Lutheran Students' Association, 1, 2, 3

ROY W. SWANSON.....Stambaugh**Junior and Senior High School, A.B.**

Lutheran Students' Association, 2, 3, 4. President, 4
 Drama Club, 3.
 Cheer Leader, 1, 2, 3, 4

CLARA ELIZABETH TEAGUE.....**Painesdale****Early Elementary, A.B.**

Gamma Phi Alpha Sorority, 1, 2, 3, 4
 Kindergarten Club, 1, 2



Front (left to right)—Kathryn King, Lillian Knutson, Clara Nordstrom, Eleanor Junttila. Second Row—Elizabeth Dickson, Jean Hansen, Dorothy Thomas, Clara Teague. Third Row—Gretchen Holmes, Ingeborg Olson, Ellen Haapala. Fourth Row—Ellen Speck, Mary Lou Morse, Viola Rosevear, Wm. Robertson. Fifth Row—Harold Anderson, Roy Swanson, Margaret Sullivan. Back Row—Woodrow Anderson, Alfred Eddy, Walter Wallen, Edwin Erdmann, Stanley Zera.

RUTH TEAGUE.....Painesdale

Home Economics, B.S.

Tau Pi Nu Sorority, 2, 3, 4

Phi Epsilon

Kappa Delta Pi -

WALTER WALLEN.....Ewen

Junior and Senior High School, A.B.

French Club, 2

Mathematics Club, 2, 3, 4. President, 4

Men's Discussion Group, 3, 4

Senior Class President

Junior Class Play

DOROTHY THOMAS.....Ishpeming

Early Elementary, B.S.

Beta Omega Tau Sorority, 1, 2, 3, 4.

President, 3

Primary Club, President, 2

Kappa Delta Pi, 3, 4. Secretary, 4

Drama Club

MARY WALSH.....Marquette

Home Economics, B.S.

Transferred from College of St. Catherine, 1, 2

Beta Omega Tau Sorority, 3, 4

Newman Club

CLARENCE VINGE.....Ishpeming

Junior and Senior High School, A.B.

Intercollegiate Debate, 1, 2, 3, 4

Mathematics Club, 1, 2, 3

Discussion Club, 3, 4

Kappa Delta Pi, 3, 4. President, 4

Co-Business Manager Senior Class

Booklet, 4

ALICE WESTMAN.....Stambaugh

Intermediate, B.S.

Symphony Orchestra, 2, 3, 4

Lutheran Students' Association, 1, 2,

3, 4. Treasurer, 4

Regional Lutheran Students' Secretary, 4

Phi Kappa Nu Sorority, 3, 4

Cornet Soloist for Glee Club, 4

HARRY WESTRICH.....Bergland

Junior High School, B.S.

Football, 1, 2, 3
 Track, 1, 2, 3
 Mailing Editor, News Staff
 Industrial Arts Club

JOHN A. WILLIAMS.....Marquette

Senior High School, A.B.

French Club, 1
 Mathematics Club, 4
 Alpha Delta Fraternity, 1, 2, 3
 Football, 1
 Band, 1

JOHN H. WIRKKU.....Hancock
Junior and Senior High School, A.B.

Chorus, 3, 4
 Lutheran Students' Association, 3, 4

ROBERT WONDERS.....Quinnesec
Senior High School, A.B.

Newman Club, 1, 2, 3, 4
 Mathematics Club, 1, 2, 3
 Theta Omicron Rho Fraternity, 2, 3, 4
 Track, 4

STANLEY ZERA.....Stambaugh
Commerce, B.S.

Commercial Club, 2, 3, 4. Treasurer,
 Spring, 2, Winter, 3
 Mathematics Club, 4
 Vice-President Senior Class



CLASS HISTORY

YEAR 1934-35

September—

- 17—Freshman Day! Sorority sisters and fraternity brothers turn out en masse to lure the guileless freshmen into their fold. If you look as though you'd be a lot of fun the Segs will get you, but if you aspire to be a sophisticate, watch out for the Betas. Assume the air of having been the high school athletic hero and the Tri Mus will haunt you. Do you write clever little plays? The Deltas will have you under their thumb in no time. Of the philosophic mind? You're practically a Theta!
- 18—Poor freshies! Everything looked easy yesterday, but with the sophs, juniors, and seniors here today it's a little complicated to know what to do to be registered. Mr. McClintock's voice can be heard in the auditorium. Don't let him frighten you; he's your best friend—your class adviser.
- 19—We meet our professors for the first time—and discover that Mr. Brown has mastered the art of balancing a chair on one leg.
- 21—The first social given by the faculty at which the girls stand and look for the good-looking men they saw at the freshman reception on Monday. The Roberts have it—Villemure, Murphy, and McLaughlin.
- 24—Mr. Roberts calls for debaters.
 Coach Hedgcock extends to the freshmen fellows a hearty welcome to football practices.
- 25—Men Get-Together to eat pasties and dunk doughnuts followed by boxing and wrestling matches—to aid digestion no doubt.



Front (left to right)—Harold Carpenter, John Wirkku, Wm. Finkbeiner, Wm. Kolkoski, **Center**—Alice Stanaway, Gertrude Heline, Irene Hedman, Esther Benson, Suzanne Johnston, Evelyn Ridan, Marjorie Allen. **Back**—Sofia Ojala, Alice Westman, Wilhelmina Schober, Edna Kielinen, Ellen Bennett, Fern Bennett, Eileen LaFave.

October—

- 2—Mr. Williams is going over the school with a fine-tooth comb for trombone and clarinet players.
- 17—Men's Union and Student Girls' Council decide that all Tammany huddles before the class elections this year will be abandoned.
- 19—Betas sponsor a most successful barn-ball.
- 22—The Rush cup which disappeared mysteriously last June appeared just as mysteriously at the Sorority-Fraternity dance Saturday evening, just before the singing of **Bring Out the Old Silver Goblet**.
- 31—Flunk slips! That's all right, freshies, the first hundred are the hardest to take.
- 26—Revenge is sweet—and Tech downs Northern for the earlier 6-0 defeat which they received here on Oct. 13.

November—

- 16—Theta Thanksgiving dance draws a record crowd. Several freshies close to tears watch the animals in the foyer and are homesick to be back on the farm.
- 20—Jack McDonald and Albert Mercure amuse the French club with their roles in the interpretation of their skit **L'avocat Pateliu**.
- 24—We defeat the Alumni in basketball, 41-30.

December—

- 7—Student Girls' League pasty supper and stunt night. Who copped the prize?

13—Christmas concert was excellent entertainment. The perfect touch was added by the herald's greeting.

January—

7—Mrs. Irene Morris of Ann Arbor comes to Northern to fill the vacancy left by Miss Carey who is convalescing in St. Petersburg, Florida.

11—Alpha Delts give the students and faculty a cool reception at the Winter Wonderland Social.

February—

1—As usual, the women are waiting for their rights. Now they want to discard their long black gym socks. Such immodesty.

8—Northern Debaters win over Albion.

15—We crawled into a rabbit hole at the Junior Prom and discovered Alice's Wonderland.

March—

1—Co-ed Prom. For once there were no wall-flowers.

20—The accomplished gymnasts demonstrate the art of standing on one leg while waving the other in mid-air.

April—

12—Llewellyn Riopelle shines as a romantic, emotional young girl in the Alpha Delta farce with an all male cast—**Second Childhood**.

15—The field is in use lately. Both football and track men are out.

May—

11—Van Cleve and Olson set new record in the mile and javelin at the Saturday meet. Someone always has Van Cleve running in circles, but mostly it's women.

16—Girls' Banquet. Institute the presentation of flowers to the seniors.

22—Panhellenic Movement—Now with these new rushing rules you are forbidden to go to a movie with your best friend.

June—

1—Segs sponsor dinner-dance. Several confident sisters who neglected looking for a date until Friday afternoon were almost left.

7—Rush Day! The frosh had the right idea. A little brains in organizing goes a lot farther than lots of brawn. As a result, the score by which they defeated the sophs broke all records—260-58.

17—This being senior week, the freshmen are nonentities. You aren't even noticed unless you make a fuss in the library. Is that nice, Mary Jane?

YEAR 1935-36

September—

23—Freshman Day! My, what a nice complacent feeling we have this morning. Directing freshmen does give one the feeling of having been around.

24—Registration Day! Not quite so smug. We just lost our turn at registering because we forgot to have Dr. Lowe sign our irregular classification blank.

26—We get a new librarian, Miss Emily Phelps.

28—A dash of real school spirit was displayed today when Northern played Ypsi with grim determination to reverse the 26-6 defeat they received last fall. Even the girls stayed on in the cold while the teams battled on a snow covered field.

October—

- 8—Looks like old-home week. Former President Munson who is now at Ypsi and Mr. Conway Peters, at one time head of the Music department at Northern, returned for a visit.
- 9—Have you noticed the white box on the south side of the campus? Some wintry morning when you've just made the last lap from home and are almost stiff with the cold, you can stop to see how cold it really is.
- 25—We celebrated a real homecoming weekend with a pep meeting, a bonfire, a parade, a Tech game and a dance.
- 26—Excerpt from Northern News: Mundy Jubilee Singers to be here Thursday.

November—

- 2—By this time you have lost your copy of the News with that college directory. If you wish to know a number, call the Bennett girls, efficiency at its best, and inquire. They have tacked their directory on the wall for convenience—your convenience.
- 6—After reading about the honors heaped on Clyde Kohn and Frank Oleksy, we make firm resolve to study.
- 15—Phi Kappas sponsor a southern plantation dance.
- 27—The so-called "Theta Feather Party"—Can't fool us, it's the Thanksgiving social.

December—

- 1—Under the capable direction of their class president, Paul Olson, the sophs start working on their Prom.
- 6—A bit of Venice! Charminglly represented by gondolas, lighted sky and water line.
- 8—College Inn doors are closed!
- 15—Annual Christmas concert.

January—

- 6—Basketball games held on Friday nights necessitate matinee dances to replace social evenings.
- 16—Chief Eagle Plume interprets Indian Lore and Customs—for which he received **three rousing cheers**.

February—

- 19—The Sterling Magicians definitely prove that the hand is quicker than the eye.
- 21—"The music went 'round and 'round" at the Junior Prom.

March—

- 6—The Oregon style debate between Tech and Northern resulted in a spirited, almost humorous, cross-questioning.
- 10—Concert was given by the Ironwood Junior College a Capella Choir.
- 18—Familiar scene at 11:40—Mr. Parker driving away from Campus with Thetas tucked in all corners of the car, and several more on the run to catch him.

April—

- 6—We had an attack of spring fever and visions of fishing.
- 14—The University of Michigan's Glee Club, composed of fifty voices, presented a fine concert.
- 16—Football heroes, basketball stars, and track men turn chorus girl for the Tri Mu production of "Northern Brightlights of 1936".

May —

- 7—The waiters at the Women's Banquet were just so happy that they couldn't wait to serve or be served. They helped themselves.
 20—We begin to wonder just what Mr. Chase meant when he said, "You know we offer this course next term."

June—

- 5—Figuratively speaking, the rush was a "push-over", but the Frosh didn't think so. Score—172½ to 145½.
 17—The men elect Paul Olson to the presidency of the Men's Union.

YEAR 1936-37**September—**

- 21—Howard Anderson appointed editor of the Northern News.
 22—Northern students welcome six new instructors: Miss Ayres, Miss Keal, Miss Loubert, Mr. Miserez, Miss Soles, Miss Rarick.
 25—Faculty Reception.
 26—Football: Oshkosh beats Northern 6-0 in a damp game.
 28—Kryl Symphony Orchestra opens assembly schedule.
 29—Men's Get-Together. Pasty capacity of Northern men revealed to be roughly 1.1100642 per capita.

October—

- 3—Football: Ypsi cripples Northern 12-0.
 7—Harvey House makes first appearance in College News.
 7—Rumors of discontent in the Contardi-Gaviglio combination.
 10—Football: Hurstmens dispose of Tech, 13-6, to gain season's first victory.
 17—Football: Central held to 7-6 victory.
 24—Football: Northern slaps defeat on Tech. Score: Northern 12; Tech 7.
 31—Football: Ironwood 7; Northern 0.

November—

- 4—Statistics show that the Junior women outnumber the men, 74 to 51.
 4—We elect class officers:
 Alfred (Pete) Eddy, president.
 Howard Anderson, vice-president.
 Lillian Knutson, secretary.
 Angeline Magnino, treasurer.
 10—Girls' Get-Together.
 11—Armistice Day Program: Marda Roberts, Isabel Steele, and Eino Michelson assist Mr. Chase.
 23—Award Assembly. Floyd Carlson, Dick Contardi, Robert Gaffney, Paul Koski, Bill Koski, Paul Olson, Bob Villemure, Jack Arneith, and Fred Bernhardt garner football awards.

December—

- 5—Basketball: Varsity nip Alumni squad, 43 to 40.
 5—Bill Koski and Floyd Carlson elected football co-captains for 1937 grid season.
 12—Basketball: Off on the right foot; Northern 55, St. Norbert's 36.
 16—Home to recuperate from those hard-punching finals that have a habit of bobbing up the end of each term.

January—

- 4—Enrollment day. Things always look better at the beginning of the term.

- 4—Many Junior names appear on Fall term honor roll.
- 4—New Girls' League Constitution published.
- 9—Basketball: Northern 46, Ironwood Junior College 33.
- 12—Assembly: We mush thru Alaska with Slim Williams.
- 15—Basketball: Three in a row. We beat Northland 53 to 37.
- 19—Men's Get-Together. The faculty polishes the apples this time.
- 22—Basketball: Villemure leads Northern to 23-13 victory over Tech.
- 23—Basketball: St. Norbert's 54, Northern 35. Our first defeat in five starts.
- 29—Basketball: Northern's hardwood heroes eke out a 41-38 win over Central.
- 30—Juniors finally lose a game in Class Basketball. It took the Seniors to do the trick.

February—

- 3—Northern students and faculty contribute to the Flood Relief Fund.
- 3—Men's Discussion Club suggests that students come to the meetings and get an education instead of staying home studying.
- 5—Basketball: Northern again over Tech. Score: 42-41.
- 12—Basketball: Northern 52; Ironwood Junior College 26.
- 13—Juniors win fifth victory in six starts to prove themselves the cream of the crop in class basketball for the third successive year.
- 15—William Doyle and Clarence Vinge represent the Juniors on the Intercollegiate Debate Squad.
- 15—Basketball: Central 34, Northern 31.
- 16—Kathryn Larson, Howard Anderson, Edna Kielinen, Norman Peterson, Dorothy Thomas, Ray Pearce, Evelyn Ridan, Clarence Vinge, and Eleanor Juntilla pledge Kappa Delta Pi.
- 17-18—Northern loses basketball game to Wayne and Ypsi by small margins.
- 17—Drama Club presents "A Matter of Choice."
- 24-28—Male Debaters journey to Huntington, Indiana Tournament. 5 wins and 7 losses.
- 26—Cage Finale: Northern 50; Jordan 22.

March—

- 1—Dr. G. A. Raiguel, World Observer.
- 3—Another budding romance; Ellen Bennett and Ford Haskins.
- 5-8—Vinge puts Tech on defensive as Northern men meet Tech in dual debates.
- 11—Girls' Banquet. Senior girls receive traditional roses.
- 19—Phy. Ed. Demonstration.
- 22—Assembly. College Symphony Orchestra.
- 23—Winter term closes.

April—

- 5—Enrollment Day.
- 5—Men's Union presents Revised Constitution.
- 12—Juniors dominate Tri Mu offices.
- 16—Theta Minstrel Show.
- 17—Tri Mus organize powerful baseball team.
- 21—46% of Northern's enrollment revealed to consist of rural students.
- 22—Class historian collaborates with Bob Murphy of Theta fame.
- 23—Co-ed Dress Party.
- 30—Romance under seas! Junior Prom.

May—

- 6—Girls' Glee Club Concert.
- 8—Track: Northern 78; Tech 44. Bill Van Cleve clips two seconds off his own record for the mile as Paul Olson breaks own high jump record.
- 10—Assembly: Students from School for the Blind.
- 13—Men's Union Dinner. Paul Olson, Floyd Carlson, and Clarence Vinge represent the Juniors on the program.
- 17—Norman Peterson and Bill Kolkoski join tennis squad.
- 19—College News reviews Dr. Bowman's Book, **Pecos Bill**.
- 22-29—Upper Peninsula Music Festival.
- 22—Track: Northern 70; Tech 52.
- 24—Assembly: Rabbi Waterman.
- 27—Clarence Vinge, Kathryn Larson, Dorothy Thomas, Raymond Pearce, and Evelyn Ridan are new Kappa Delta Pi officers. Ellen Bennett and Robert Murphy are initiated.

June—

- 2—Men's Union election. Floyd Carlson, president; Paul Olson, vice-president; Alfred Eddy, secretary-treasurer.
- 4—Rush Day. A lot of fun from the side lines. Frosh victors again.
- 9—Award assembly: Annear, Van Cleve, Paul Olson, Villemure, and Paul Koski receive athletic awards.
- 10—Junior Play, "Mary the Third." Cast: Ellen Bennett, Isabel Steele, Eino Michelson, Marie Richards, Lysle Hutton, Stanley Susan, Marda Roberts, Walter Wallin, Mrs. K. Wagenhauser, and Norman McLean. Fine work, classmates! A splendid production.
- 11—Phi Epsilon Dinner.
- 14—Senior Class Day Program.
- 18—School closes for summer vacation.

YEAR 1937-38**September—**

- 21—Our last fall enrollment! Welcome new faculty members: Miss Carlberg, Miss Gilbert, Miss Hess.
Miss Magers returns after year's absence.
- 25—Football: Villemure and Bill Koski lead aerial attack in victory over Oshkosh. Score: Northern 20, Oshkosh 19.
- 28—Mr. Lee leads us to the year's first Men's Get-Together.

October—

- 2—What a headache! Ypsi 44, Northern 0.
- 6—Assembly. Bible's animal circus.
- 9—Central 32, Northern 0.
- 16—Tech 7, Northern 0.
- 21—Girls' Get-Together.
- 22-23—Homecoming for the Alumni.
- 23—The football team does its bit for the Alumni. Northern 9, Tech 0.
- 30—Northern 3, Ironwood Junior College 0. Floyd Carlson, Bill Koski, Dick Contardi, Bob Villemure, Paul Olson, Fred Bernhardt, John Arneith, and Bob Gaffney play their last game for Northern.

November—

- 3—Class elections. Independents go to town. The following head the

Senior class: Walter Wallen, president; Stanley Zera, vice-president; Madelyn Eggert, secretary; Kathleen Callow, treasurer.

15—Joseph Schnitzler—lawyer, lecturer, and philosopher.

22—Charles Eagle Plume.

25—Thanksgiving Recess.

December—

3—Sophomore Prom.

4—Basketball: Northern-63, Alumni-40. Are those Grads getting old?

12—Christmas Concert.

15—Christmas party in foyer.

Fall term ends.

January—

3—Winter term begins.

7—Basketball: Northern-39, Ironwood Junior College-33.

8—Basketball: Northland-52, Northern-42.

14—Basketball: Northern wins thriller from Jordan. Score: Northern-48, Jordan 45.

15—Seniors send Juniors to showers with a 19-17 defeat.

17—Dr. Sherwood Eddy clarifies the foreign situation.

21—Basketball: Northern 46, Tech 29.

24—Gillette Chamber Orchestra battles blizzard to reach Northern.

24-26—The Big Blizzard of 1938. School adjourns the 25th and 26th.

29—Central 55, Northern 46.

February—

4—Basketball: Tech 36, Northern 34.

7—Drama Club presents two plays.

12—Basketball: We lose again. Ironwood Junior College 35, Northern 34.

17-19—Women debaters travel to Whitewater tournament. Four wins and four losses.

17-19—The basketball team wins at Ypsi and loses to Central and Wayne.

19—Ping-Pong fad in full swing.

21—Governor Murphy speaks to capacity assembly audience.

25—Basketball: Northern bows to Ashland, 54-46, as season ends. Paul Koski, Bob Villemure, Dick Contardi, Paul Olson, and Floyd Carlson conclude their basketball careers.

25-26—Men Debaters split even at North Manchester, Indiana tournament.

March—

1—Hedley Hepworth, English dramatist.

4-7—Howard Anderson, Ed Erdmann, and Clarence Vinge conclude Inter-collegiate debate careers in dual debate with Tech. Vinge says good-bye to four years of debate.

14—Varsity basketball squad given letters. Vinge, Hawke, and Greifer express opinions on college life.

17-19—Upper Peninsula Regional basketball tournament. Mr. McClintock is again manager.

16—Phy. Eds cavort in gym demonstration.

21—Assembly: The Master Singers.

25—Winter term closes. Mr. Miserez leaves to return during summer term.

April—

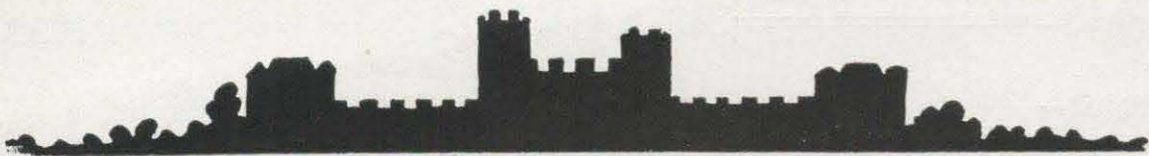
- 4—We enter the stretch. Let's go, Seniors! Prof. Bowman returns.
- 13—Tax problem puzzles the Men Discussers. You haven't heard the last of that problem, boys!
- 13—Eino Michelson, Ellen Bennett, Shirley Squiers, and Mary Jane Manthei cop places in Northern's inaugural Poetry Reading Tournament.
- 14—Little Symphony Orchestra of the University of Michigan pleases Northern audience.
- 18—Jerold Frederic, pianist.
- 22—Tri Mu **Bright Lights**, a colossal show with colossal chorus girls!
- 29—Prom-Goers whirl on desk at Junior Prom.

May—

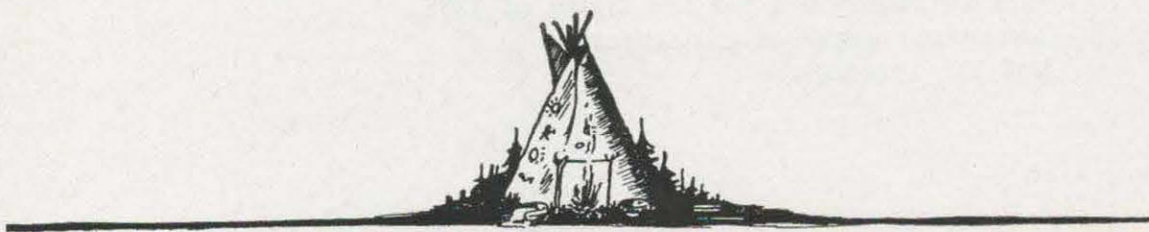
- 3—Girls' Glee Club Concert wins applause.
- 4-5-6—Band boys tour upper peninsula cities. George Kendricks, Jake Arneith, Harold Carpenter, Glen Wiggins, Bill Finkbeiner, William Kolkoski, and Bill Robertson make the trip for the last time.
- 7—Mental Hygiene Conference.
- 6—Professor C. C. Spooner is elected Fellow of the American Association for the Advancement of Science.
- 10—Band presents spring concert.
- 12—Mary Jane Manthei, Ellen Bennett, and Eino Michelson place high in Michigan Inter-collegiate interpretative reading contests.
- 17—Girls' League enjoys banquet. The men bring their serving technique up to a new zenith.
- 18—Girls' Glee Club travels to the Copper Country.
- 19—Our last Men's Union Banquet.
- 24—Roy Swanson disagrees with senior girls over cap and gown measurements.
- 25-26—Seniors have their pictures taken by Kim Hatch.
- 21-28—We come back on the 28th to avenge Tech's track victory of the 21st.
- 28—Norman Peterson beats Tech to conclude tennis playing days under Northern colors.

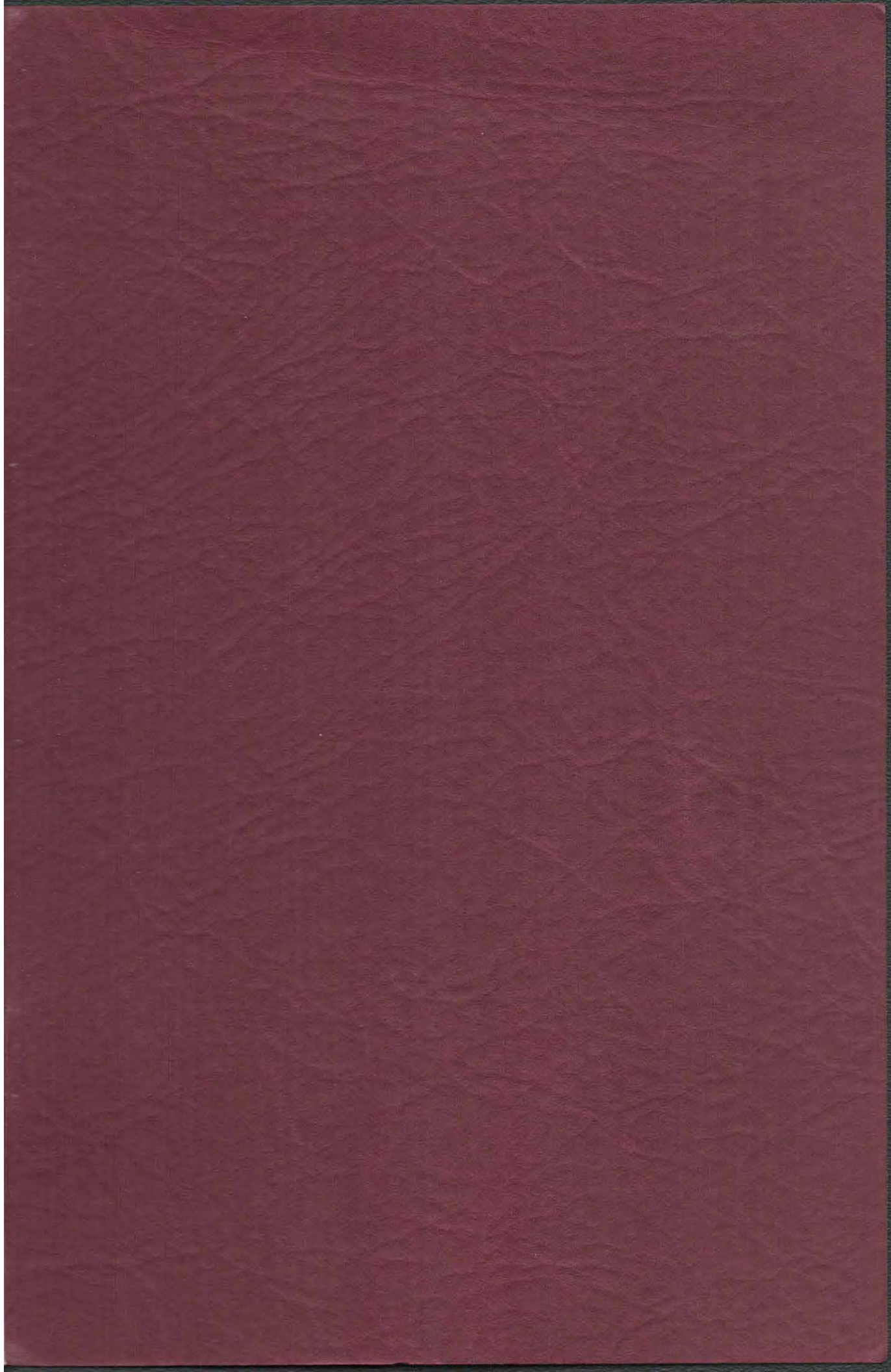
June—

- 1—Senior Get-Together.
- 3—Bob Villemure heads Police at our last Rush Day. The water looked cold—or are we getting old?
- 4—Kappa Delta Pi picnic.
- 9—Junior play, "Spring Dance".
- 12—Baccalaureate.
- 13—Class Day Program—Northern Seniors go Hollywood.
Senior picnic—The seniors actually look (or act?) youthful today.
- 17—Faculty Reception for the Class of 1938.
- 18—Commencement—of a new era.
Auf Wiedersehen!



AUTOGRAPHS





GOELLE STR. CO., MARQUETTE, MICH.