

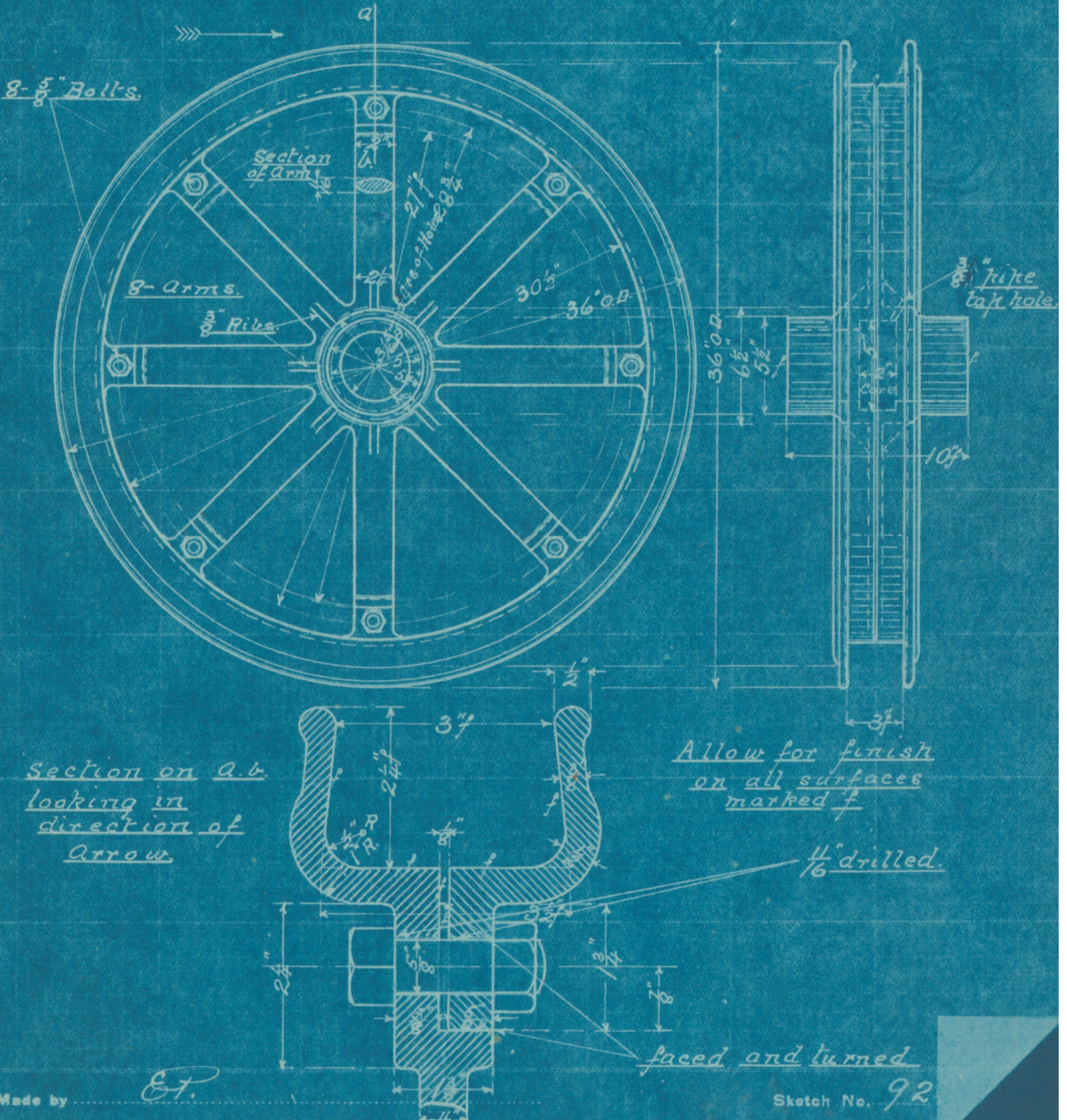
CHAMPION COPPER COMPANY

SHOP SKETCH

Subject: 36" Sheave Wheel $3\frac{1}{2}$ " Bore
Champion Mine.

Date Aug 10 - 10

Adams Township, MI



Section on a.b.
looking in
direction of
arrow.

Allow for finish
on all surfaces
marked f

1/16" drilled.

faced and turned

Made by

E.T.

Sketch No. 92

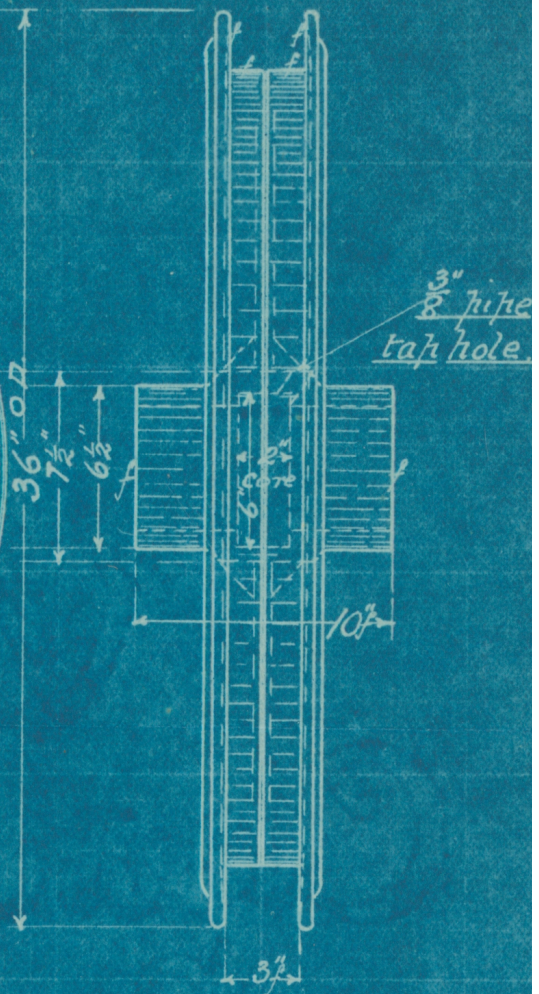
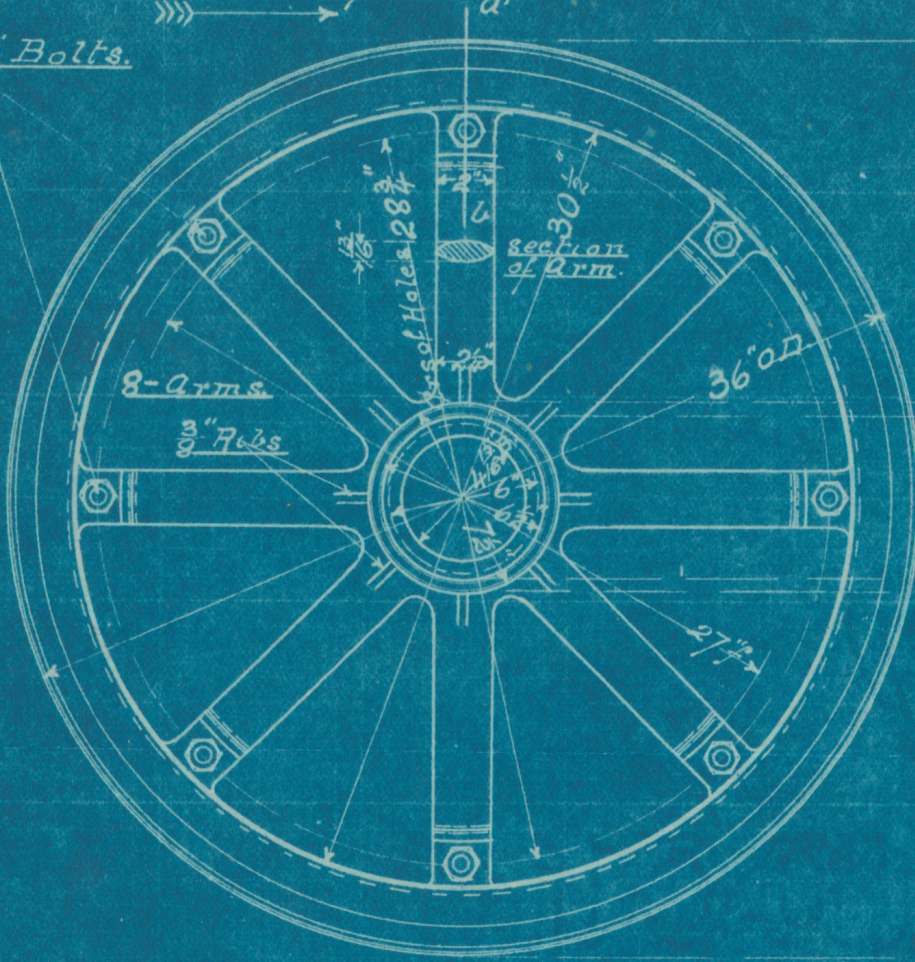
Adams Township, MI

CHAMPION COPPER COMPANY SHOP SKETCH

Subject: 36" Sheave Wheel 4 1/2" Bore
Champion Mine.

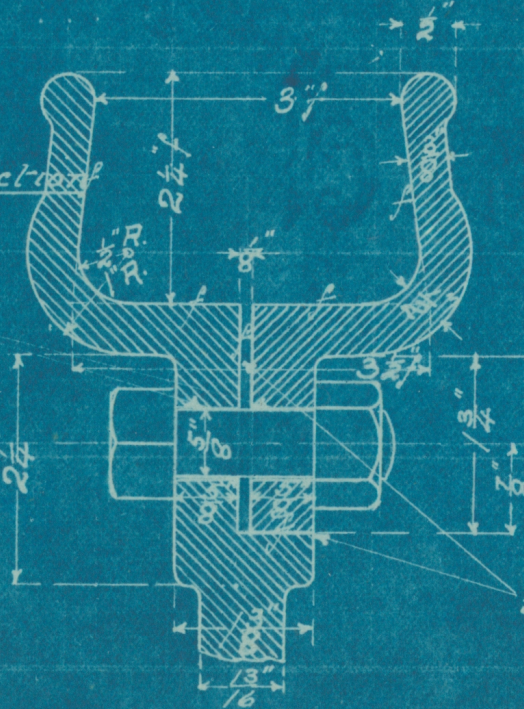
Date Aug 11-10.

8- 5/8" Bolts.



Section on a-a
looking in direction
of Arrow.

4/16" drilled.



Allow for finish
on all surfaces
marked f.

faced and turned.

Made by

Et

Sketch No. 93.

Adams Township, MI

CHAMPION COPPER COMPANY
SHOP SKETCH

Subject: 24" U.G. Sheave Wheel 3" Bore.
Champion Mine.

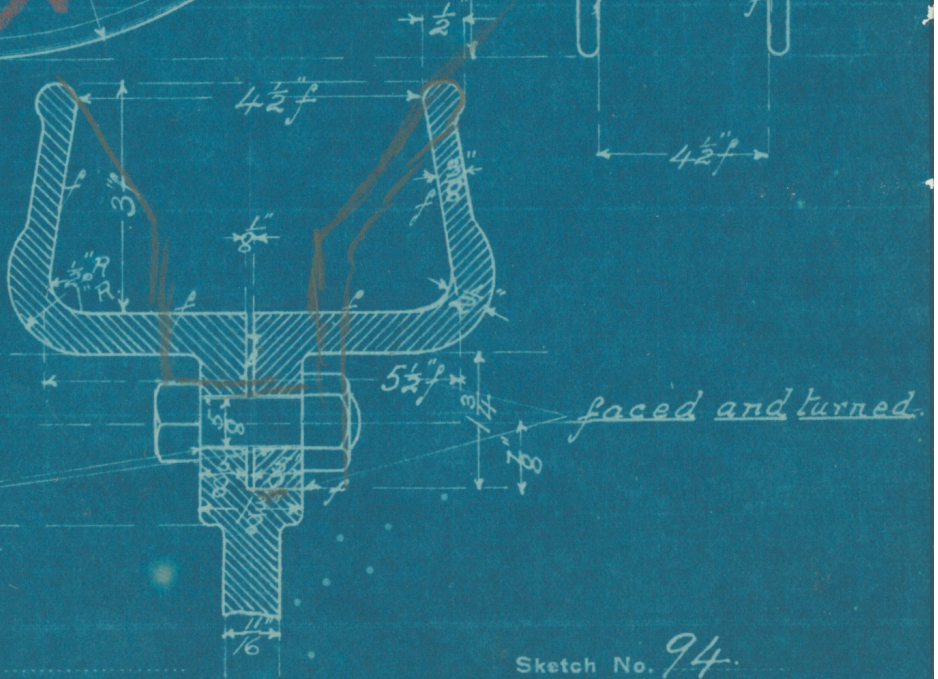
Date Aug 12-10.



Revised

Allow for finish on
all surfaces marked
f

Section on a
b looking in
direction of
Arrow.



Made by

ET

Sketch No. 94

Adams Township, MI

CHAMPION COPPER COMPANY

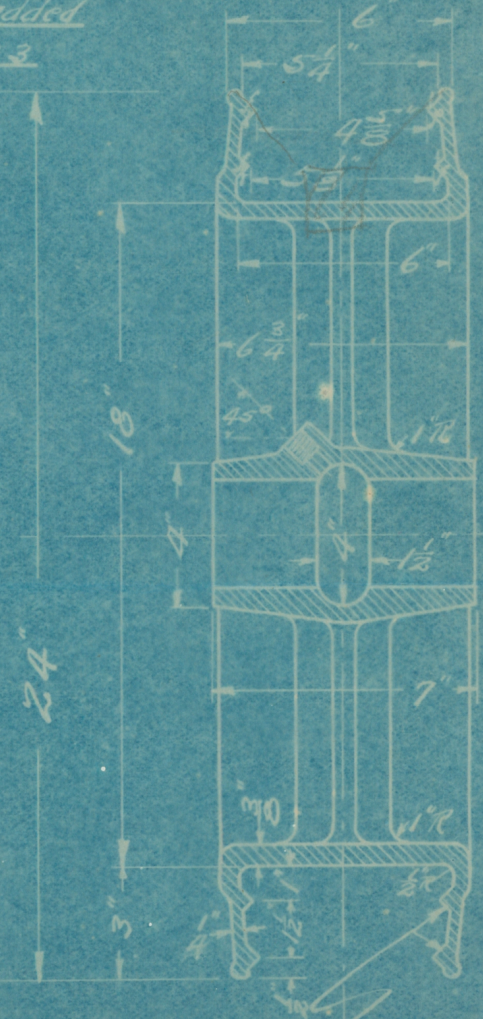
SHOP SKETCH

Subject: 24" Wall Iron Shaft Sheave Wheel
Copper Range Co's Metal Pattern

Date May 8, 1917

Note: Copied from F.P. No. 1874
Under K-50

Note: This Boss added
Aug. 14, 1923



Angle of Bead 45°

Allow for finish only
on surfaces marked f

Made by RR

Sketch No. **532**

Keep This Sheet Clean and Return Same to Shop Foreman When Work is Completed

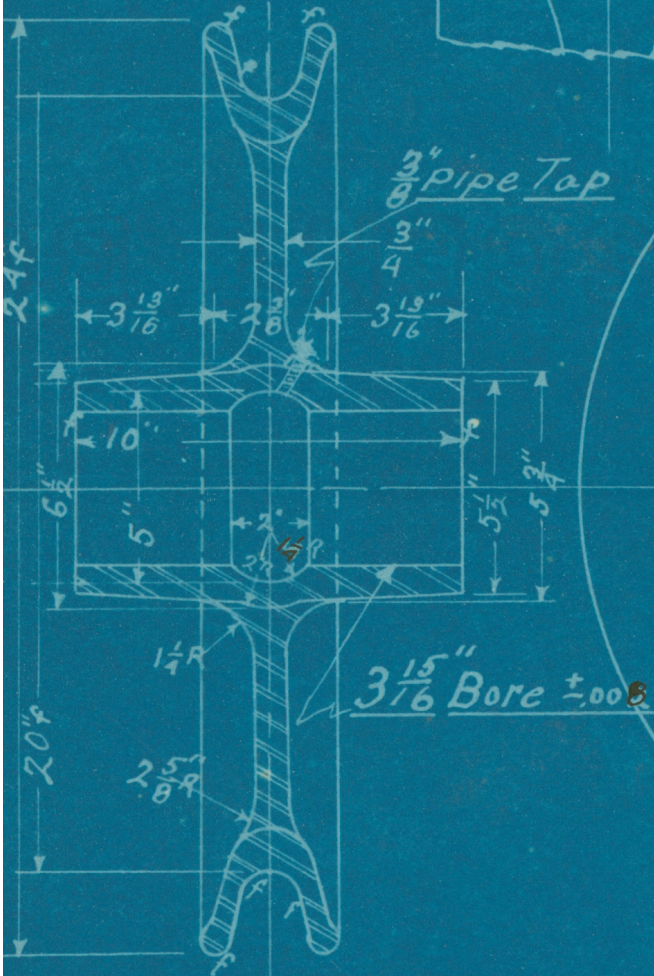
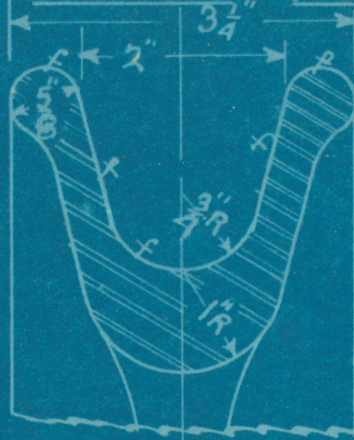
SHOP SKETCH

24" Steel Sheave Wheel

Date July 17, 1929

Subject
3 1/16" Bore

Approx. Wt. _____



Allow For Finish On Surfaces Marked f

Made by

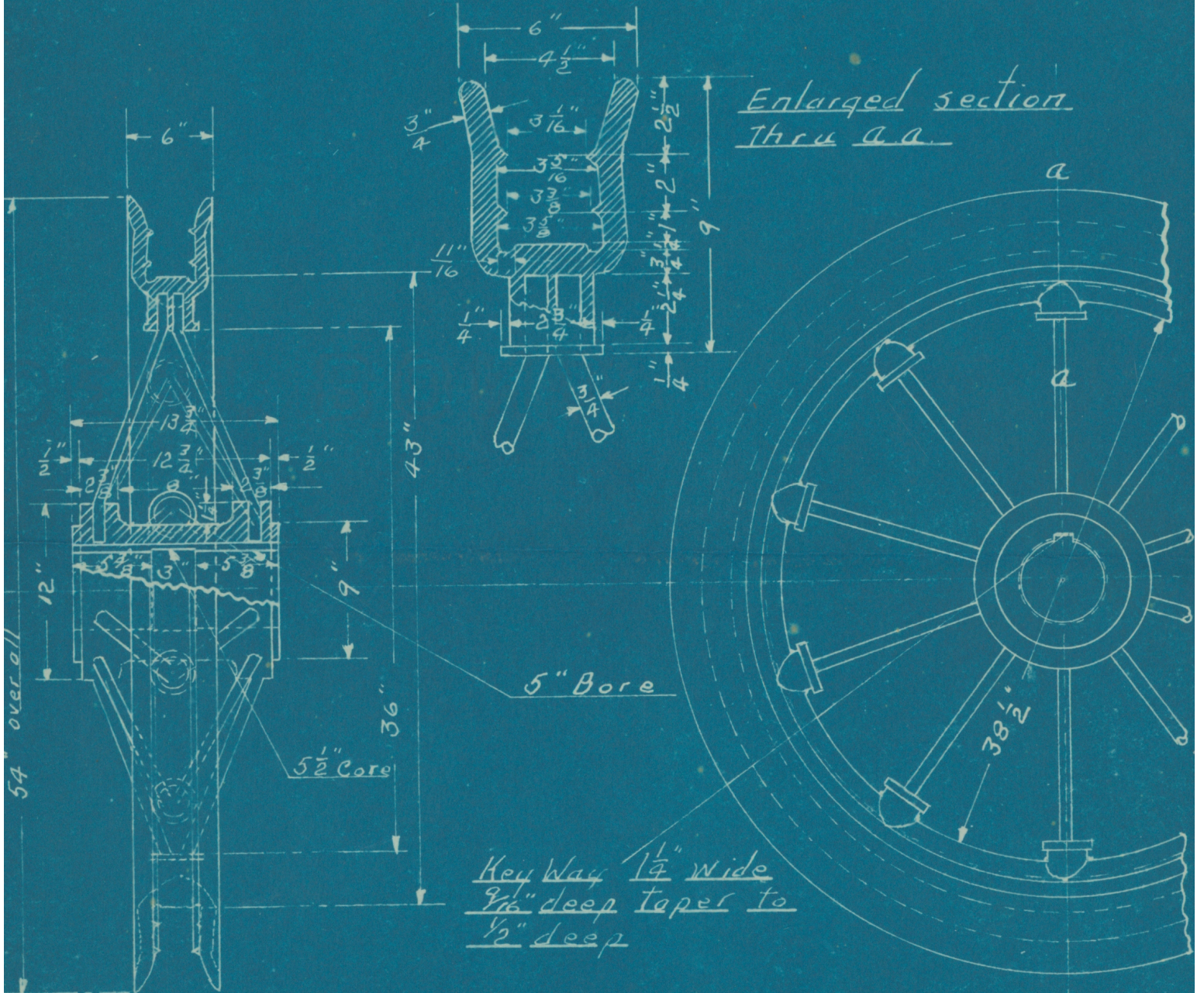
JTB

Sketch No.

884

Subject: 54" Sheave Wheel

Date June 17, 1925



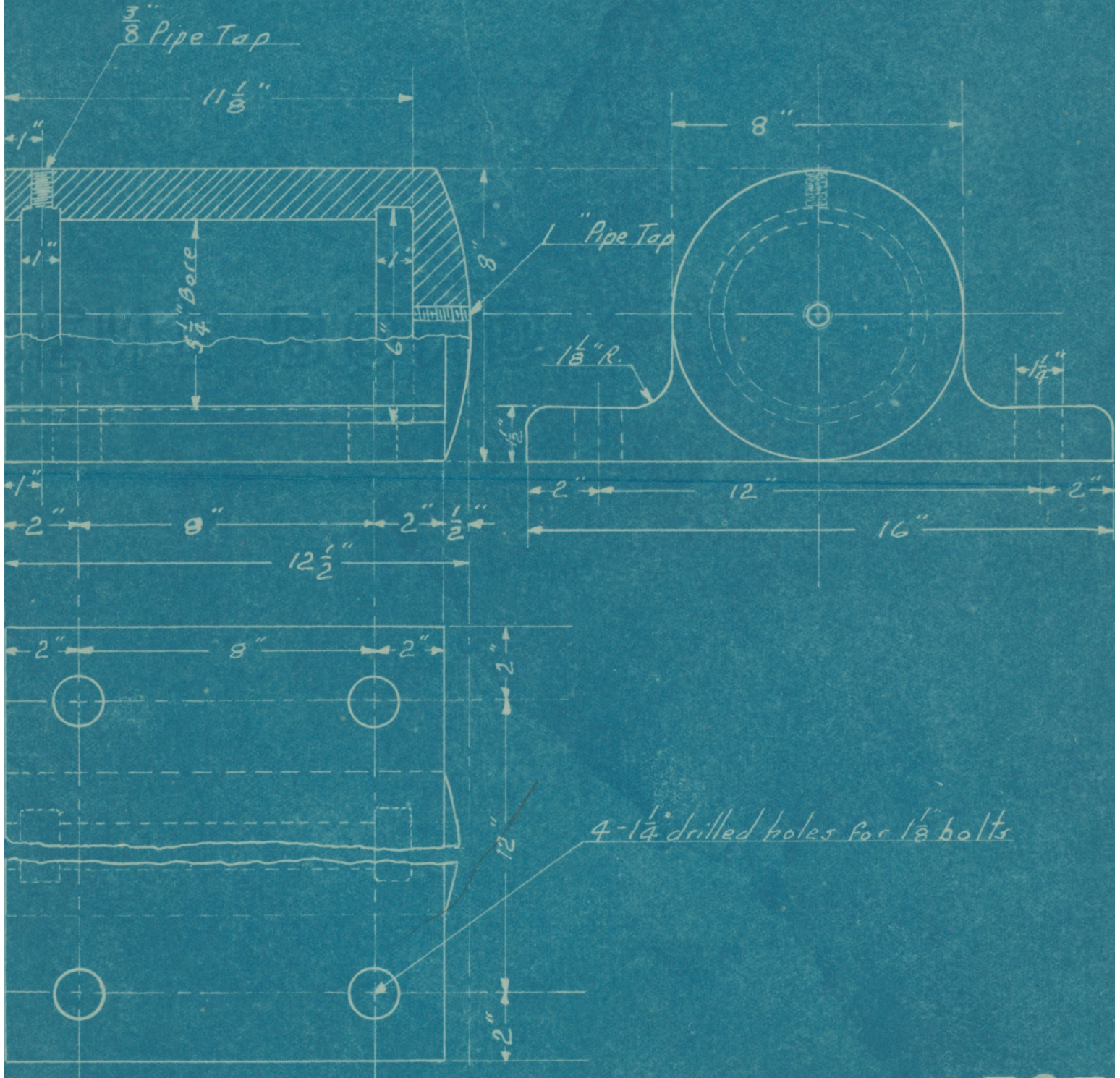
Made by W.C.F.

Sketch No. 804

CHAMPION COPPER COMPANY

SHOP SKETCH

Subject: C.I. Bearing For 4 Ft Angle Date April 11 1925
Sheave Shaft No 2 T.M.Co. - No 4 C.C.Co



Made by W.E.V.

Sketch No. **797**

Keep This Sheet Clean and Return Same to Shop Foreman When Work is Completed

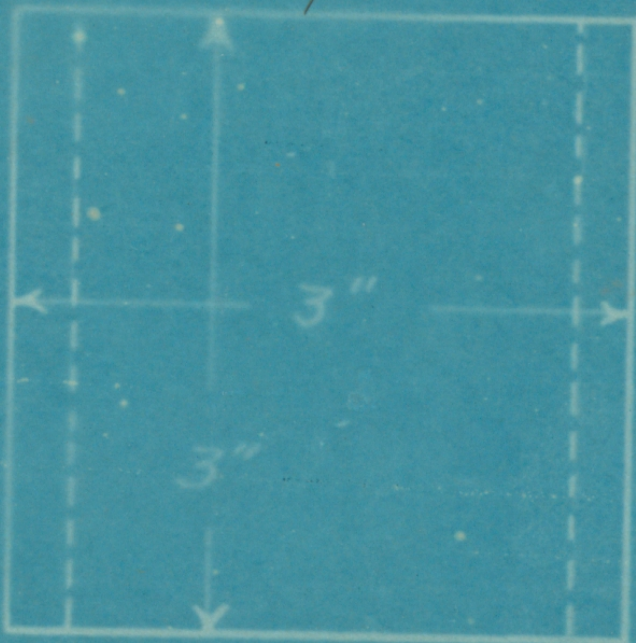
Brass Bushing 18" U.G. Sheave

MADE BY

MR

DATE

7-19-04



Allow for finish