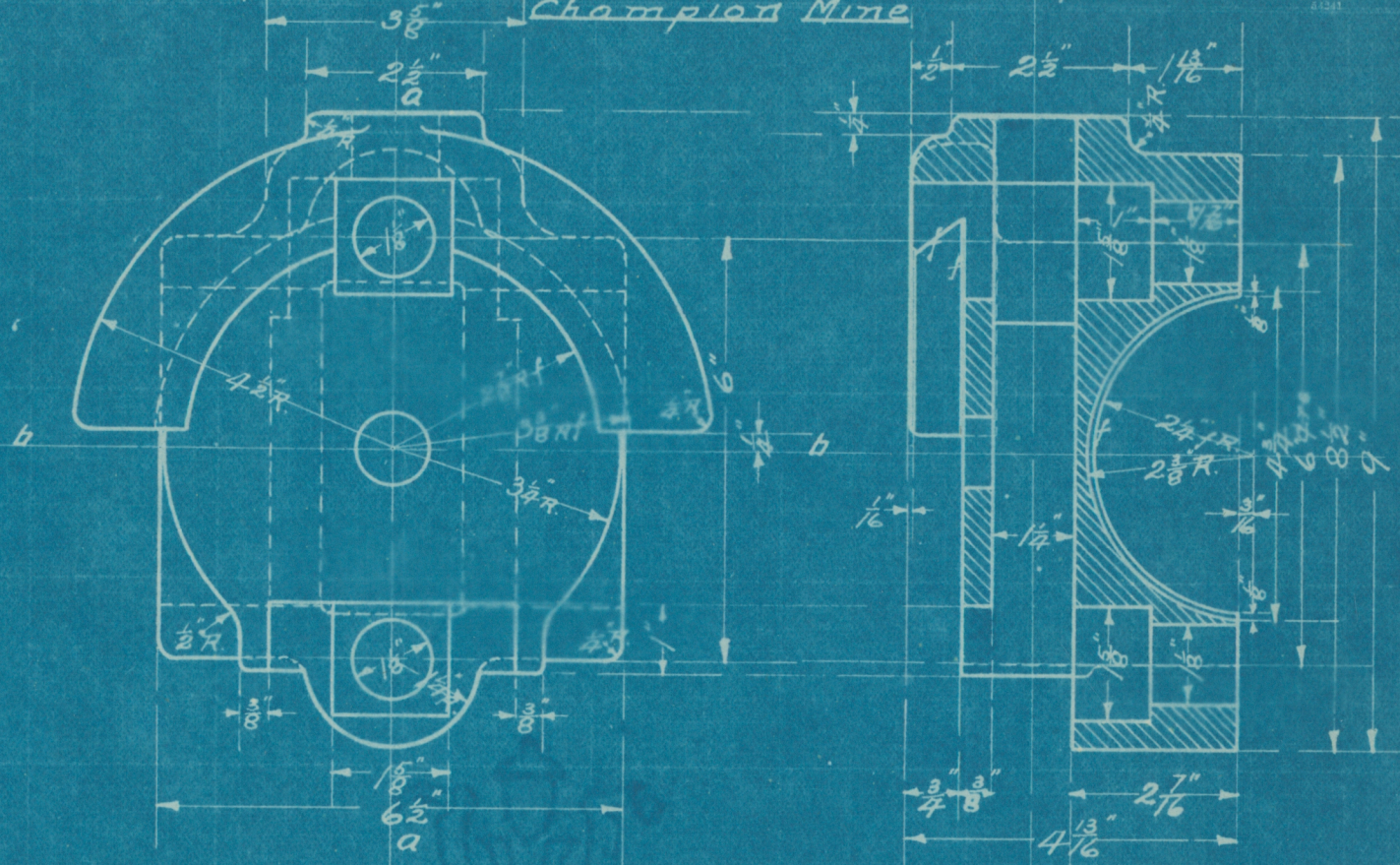


Adams Township, MI

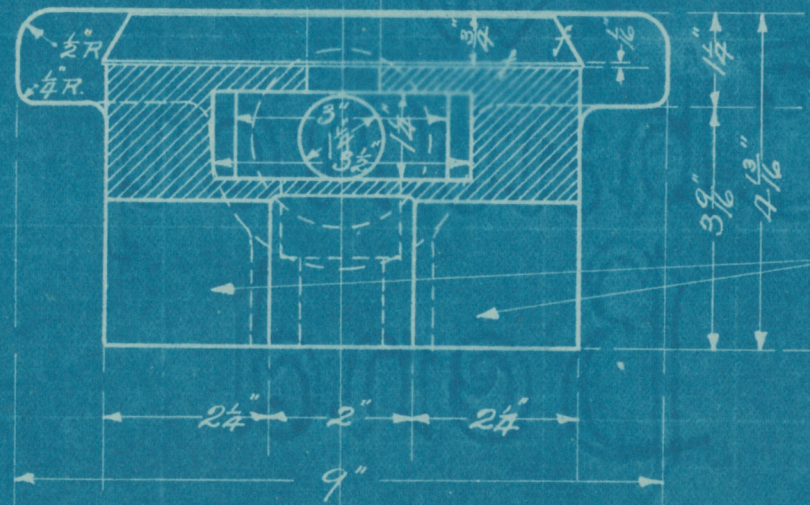
CHAMPION COPPER COMPANY
SHOP SKETCH

Subject: Clamp for 4" Shaft Column Date: Sept 20-11.
Champion Mine



Section thro aa

Allow for finish on surfaces marked \neq only.



Bearing Strips

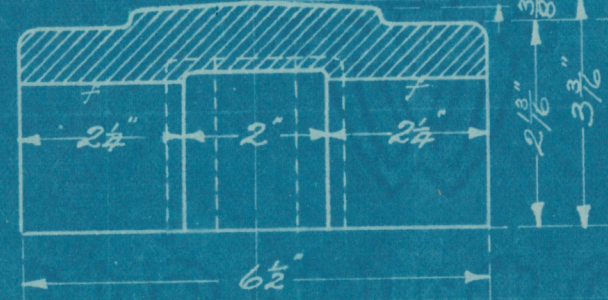
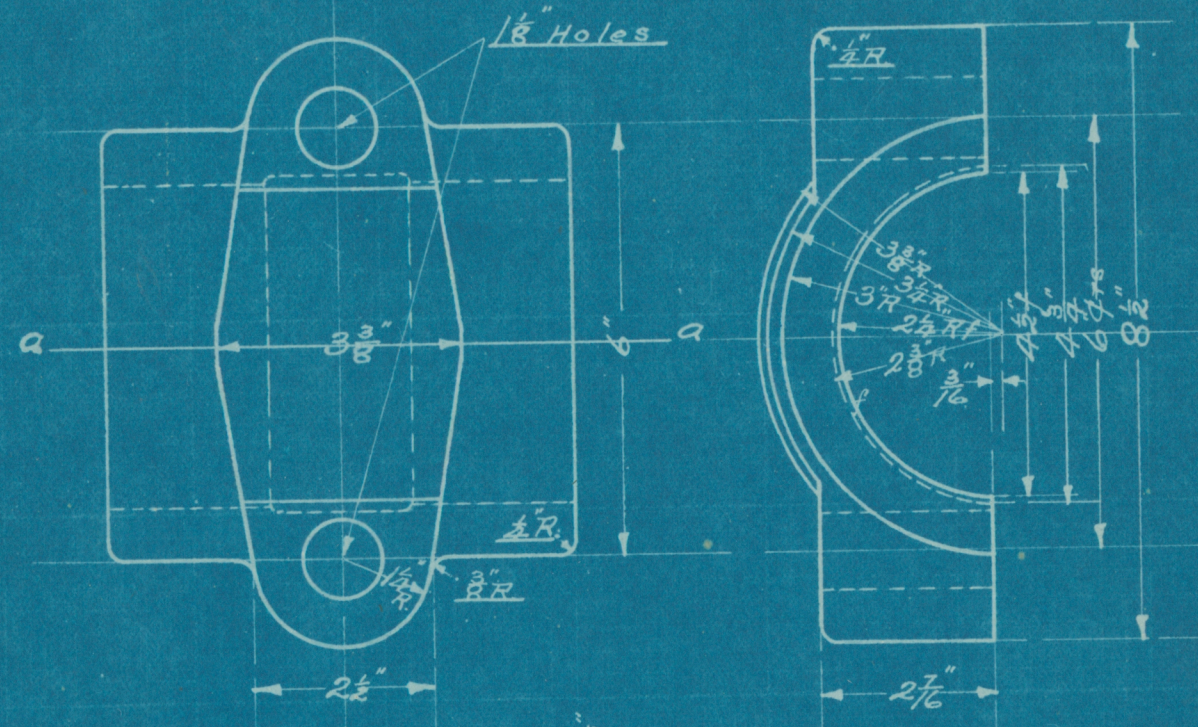
Section thro bb

Made by ET Sketch No. **154.**

Keep This Sheet Clean and Return Same to Shop Foreman When Work is Completed

CHAMPION COPPER COMPANY
SHOP SKETCH

Subject: Cap for 4" Clamp Date: Sept 21-11.
Champion Mine



Section on line aa

Allow for finish on surfaces marked \neq only

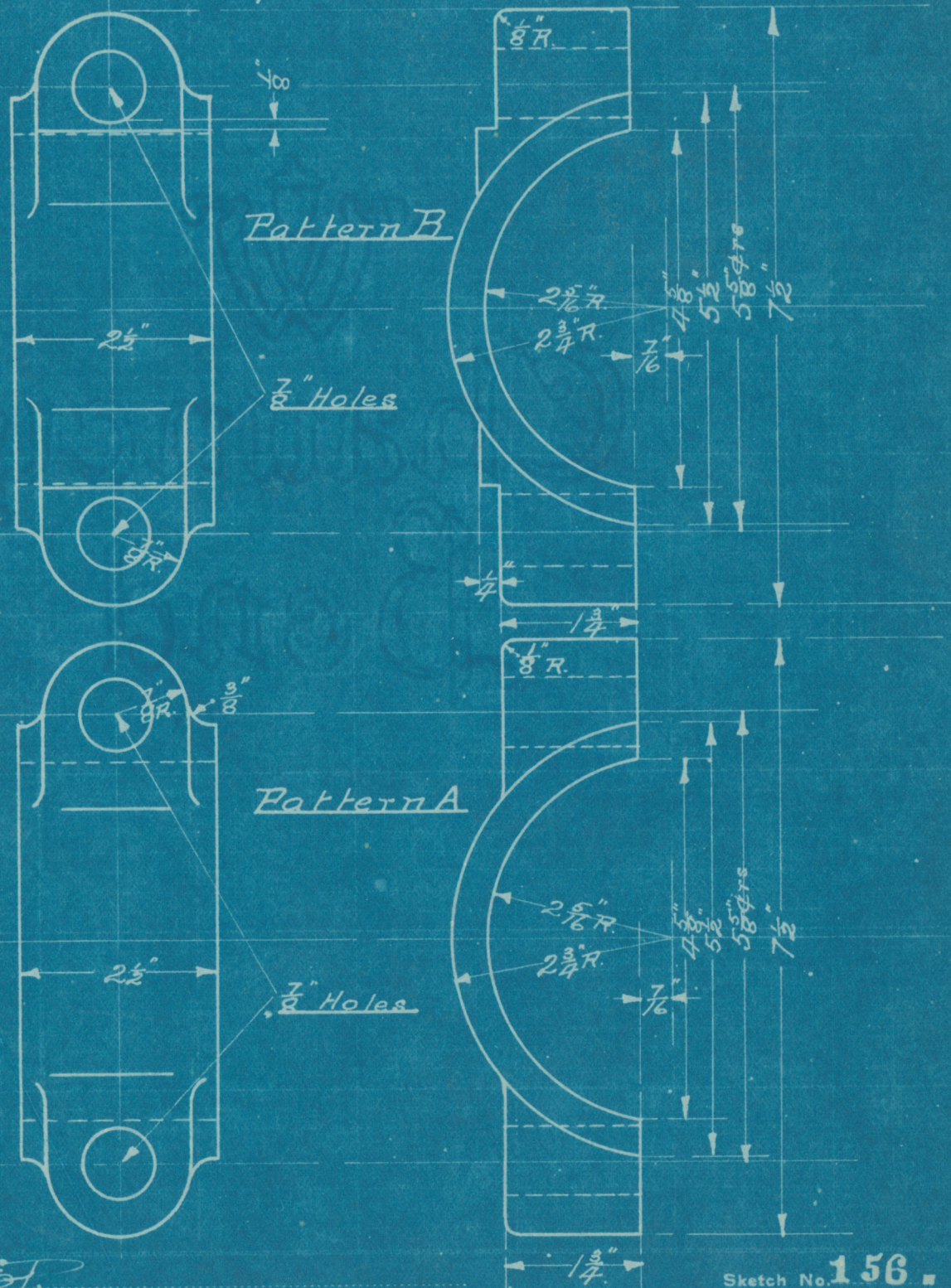
Made by ET Sketch No. **155.**

Keep This Sheet Clean and Return Same to Shop Foreman When Work is Completed

CHAMPION COPPER COMPANY
SHOP SKETCH

Sub Adams Township, MI

Collar for 4" Shaft Column
Champion Mine. Sept 21-11.



Made by *ET*

Sketch No. 156.

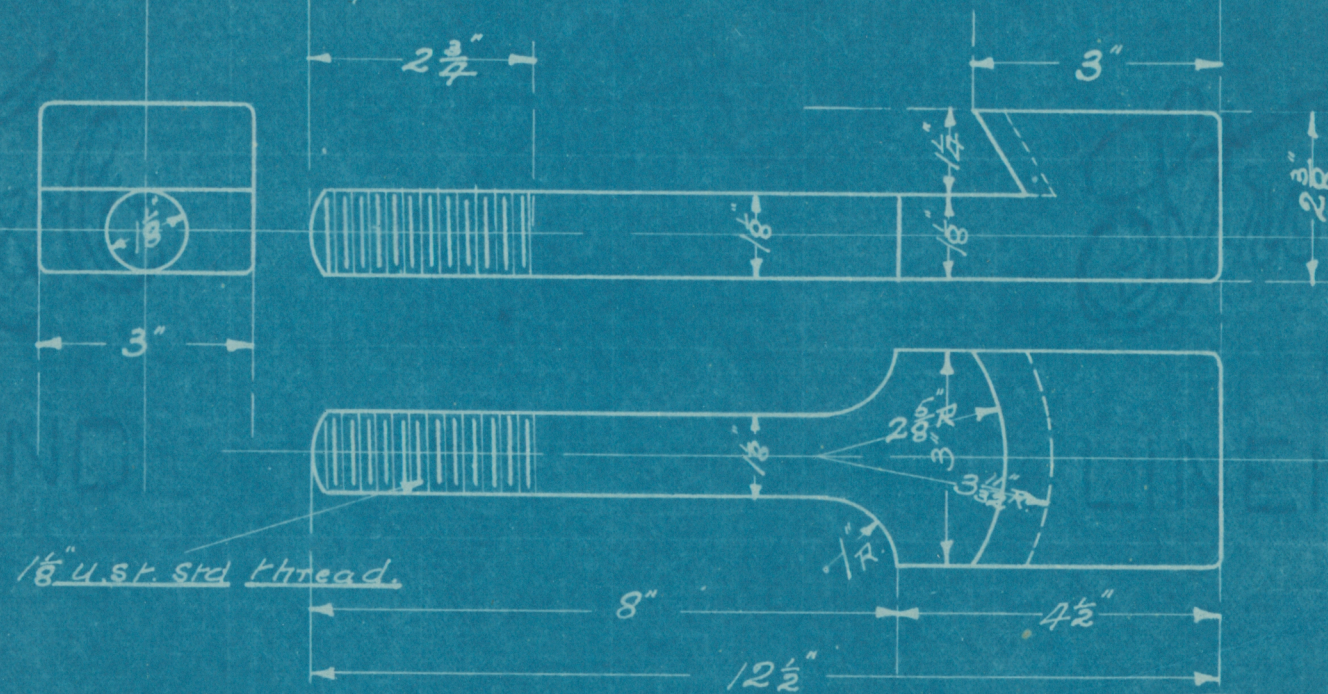
Keep This Sheet Clean and Return Same to Shop Foreman When Work is Completed

CHAMPION COPPER COMPANY

SHOP SKETCH

Subject: Hook Bolt for 4" Clamp
Champion Mine.

Date Sept 26-11.



1/8" U.S. std thread.

Made by *ET*

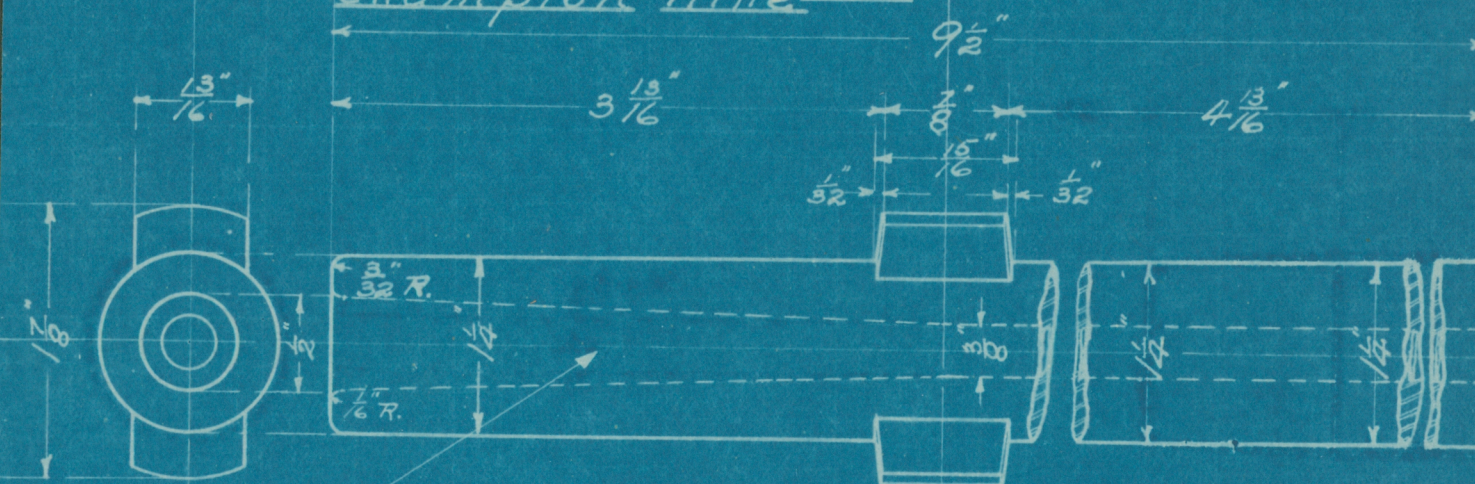
KEEP THIS SHEET CLEAN AND RETURN SAME TO SHOP FOREMAN WHEN WORK IS COMPLETED

CHAMPION COPPER COMPANY

SHOP SKETCH

Subject: Drill Shank Steel for #8 Leyner
Water Drill Forging No
Champion Mine.

Date May 30-11.



Hole made Taper to centre of Lugs

Made by *ET*

KEEP THIS SHEET CLEAN AND RETURN SAME TO SHOP FOREMAN WHEN WORK IS COMPLETED