

CHAMPION COPPER CO.

Sketch No. 253
236

DRAWING ROOM SKETCH.

To be returned when Work is Finished.

Draftsman _____

Examiner _____

Data for Placing Smith
concrete Mixer

Painesdale Mich.,

June 11 1908

Belt Wheel on other side
40" dia. 250 RPM
Mixer about 26 RPM

(make at mill
Beacon Hill)

at least 5'

Mixed concrete

Wheel below

Make High enough
for concrete to
run under

Feeding Platform

Tipping Lever
Dipper

5'-0"

2'-2"

5'-0"

about 8'

(Motor to & Belt wheel in
our case was about 9 ft.)

Belt = 6" wide

Sketch sent to E. Koepel, at
Beacon Hill,

Sketch No. 237

CHAMPION COPPER CO.

DRAWING ROOM SKETCH.

To be returned when Work is Finished.

Draughtsman W. R. ...

Examiner _____

Painesdale Mich., June 12 1905

WORK

Cast wheel frame

to be kept at home

Exam for Smith
Copper Works

Cast Wheel



Damping Lever

Sketch sent to E. Koepel at Porcon Hill

CHAMPION COPPER CO.

Draughtsman *H. M. ...*

Sketch No. 240

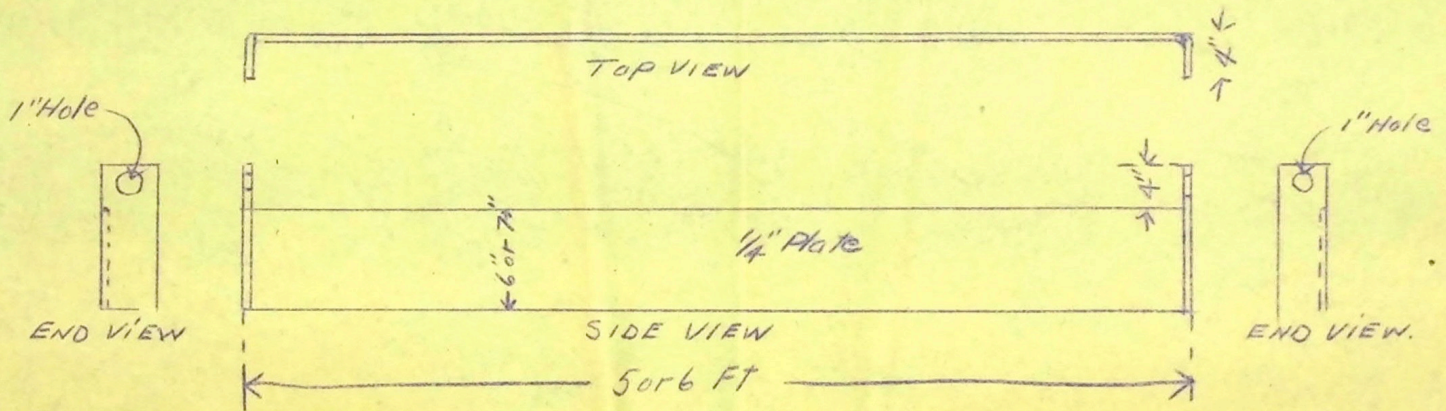
DRAWING ROOM SKETCH.

Examiner _____

To be returned when Work is Finished.

Painesdale Mich. *Aug 25* 190*8*

*Concrete Form Plate
Make 2*



(Property of Surface Force)

CHAMPION COPPER CO.

Draughtsman H. C. Munn

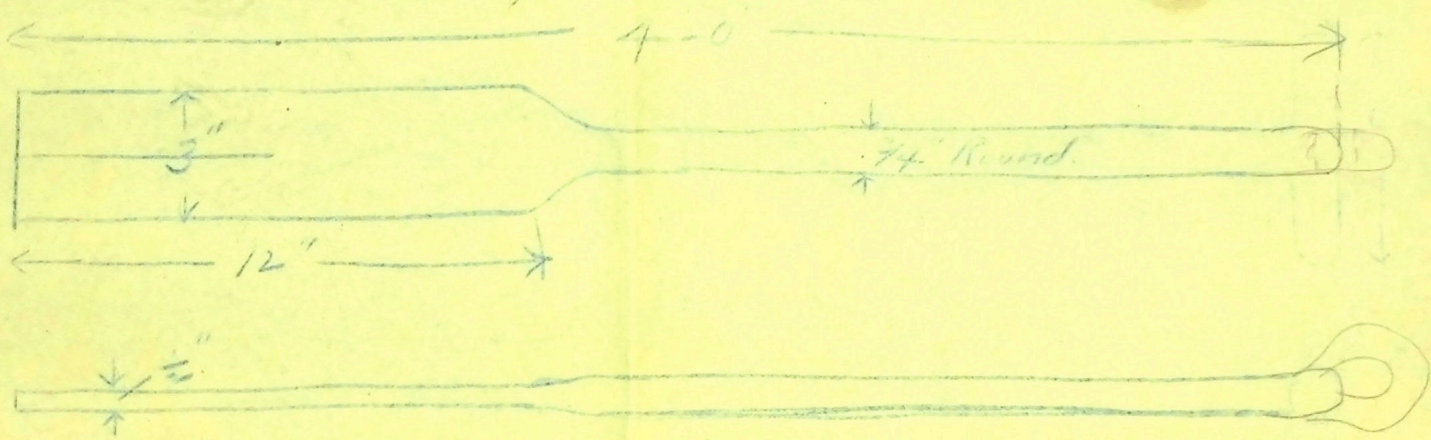
Sketch No. 235

DRAWING ROOM SKETCH.

Examiner _____

To be returned when Work is Finished.

Painesdale Mich., June 19 1908



Concrete Hammer

Make 6

CHAMPION COPPER CO.

Sketch No. 246

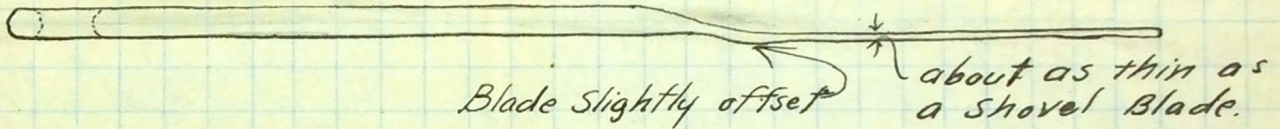
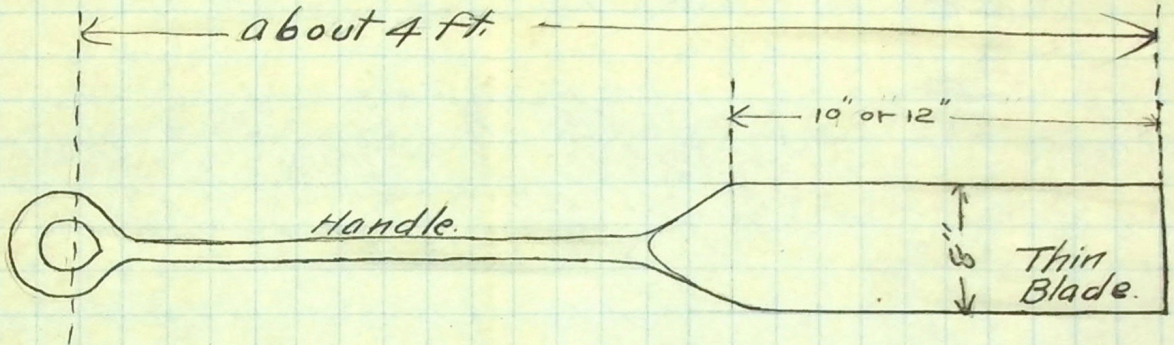
Draughtsman *H. T. Mercer*

DRAWING ROOM SKETCH.

Examiner _____

To be returned when Work is Finished.

Painesdale Mich., *Aug 29* 1908



Concrete Spader.

Make 2.