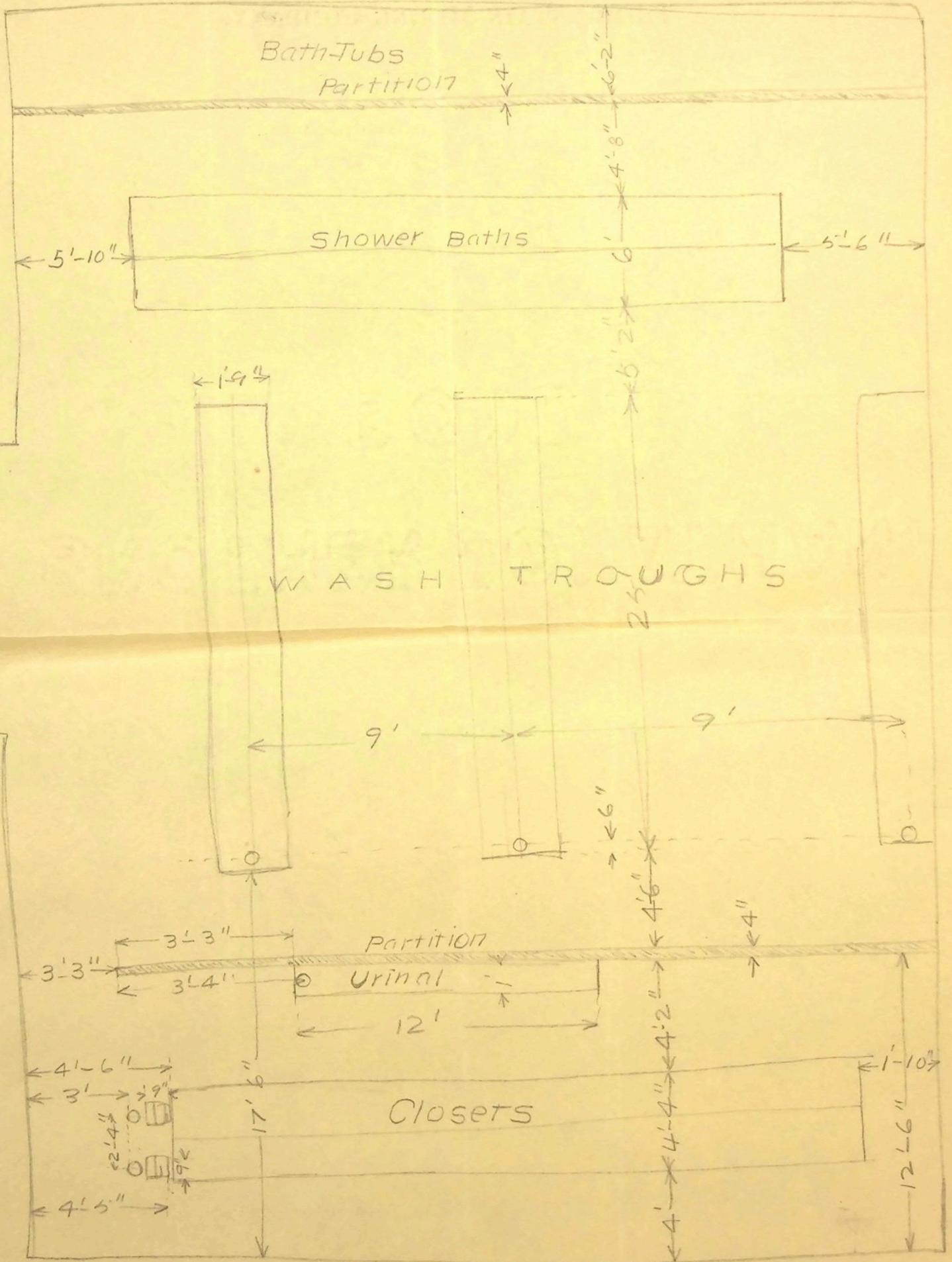


# SKETCH OF WASH ROOM "B" CHANGE HOUSE

FR 1384-I





Adams Township, MI

Requisition No.

Drawn by *Mercer*

Checked by

ENGINEER'S OFFICE

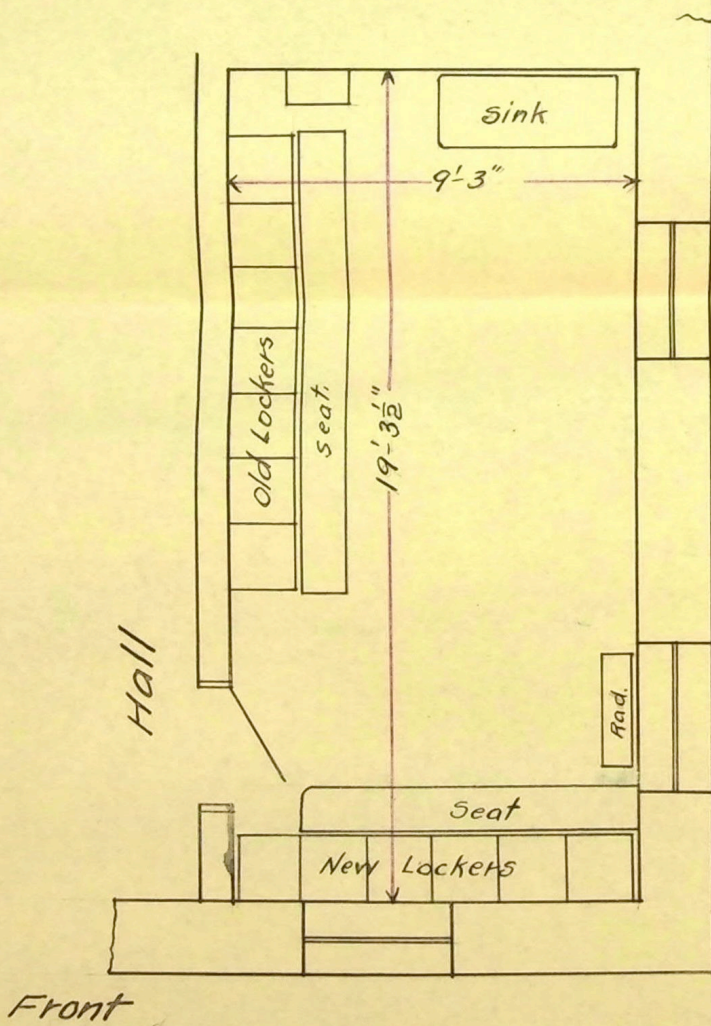
# CHAMPION COPPER CO.

PAINESDALE, MICH.

F. P. No. *1381-H*

Date *Jan. 15* 1916

SUBJECT *NO 1 CHANGE HOUSE; Arrangement for Office.*  
*1/4" = 1'-0"*





DRAWING OFFICE SKETCH.

Adams Township, MI

Order No. 45

To be returned when Work is Finished.

Copy Book \_\_\_\_\_ Page \_\_\_\_\_

Draughtsman \_\_\_\_\_

Examiner W.M.

Indeped,

CHAMPION COPPER CO.

F.P. 1381 - ~~4~~ F shut 2

Painesdale, Mich., \_\_\_\_\_ 19 \_\_\_\_\_

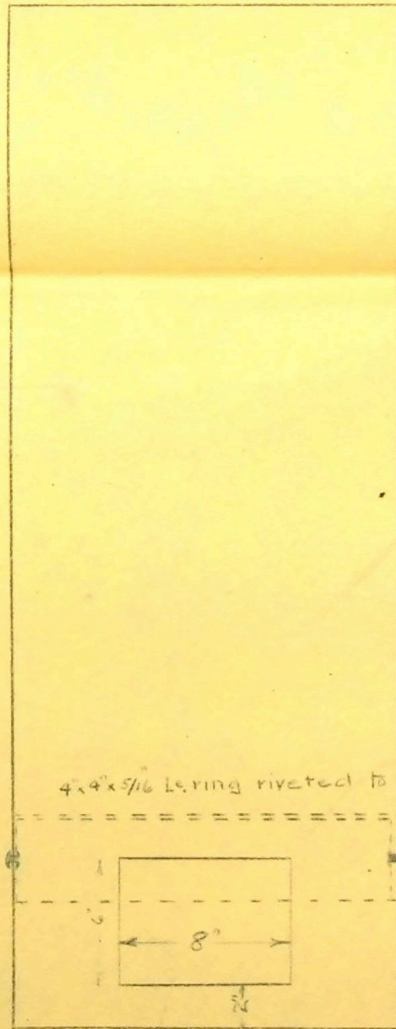
Refuse burner for Supply Houses

Make out of 1/8" tank plate

18" dia.

Top and bottom left open

4 ft



Opening no door.



DRAWING OFFICE SKETCH.

Adams Township, MI

Order No. 44

To be returned when Work is Finished.

Copy Book 1 Page 44

Draughtsman McHILL

Examiner [Signature]

CHAMPION COPPER CO.

Indexed

F.P. 1381-F sheet 1

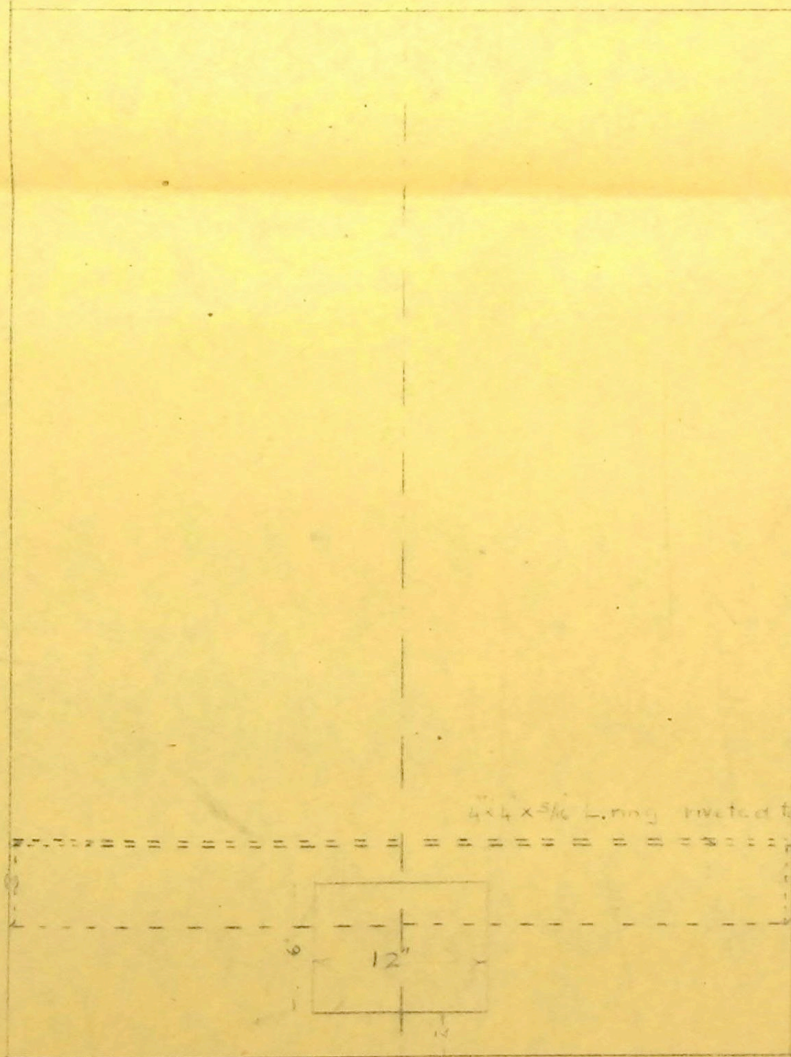
Painesdale, Mich., Apr 19 1906

Refuse burner for Supply Houses

Top and bottom of shell left open

Made of 1/4 tank plate

3'-4"



4x4x5/16 L. Ang riveted to shell

opening, no door



Requisition No. \_\_\_\_\_

ENGINEER'S OFFICE

F. P. No. 1381-E

Drawn by Mercer

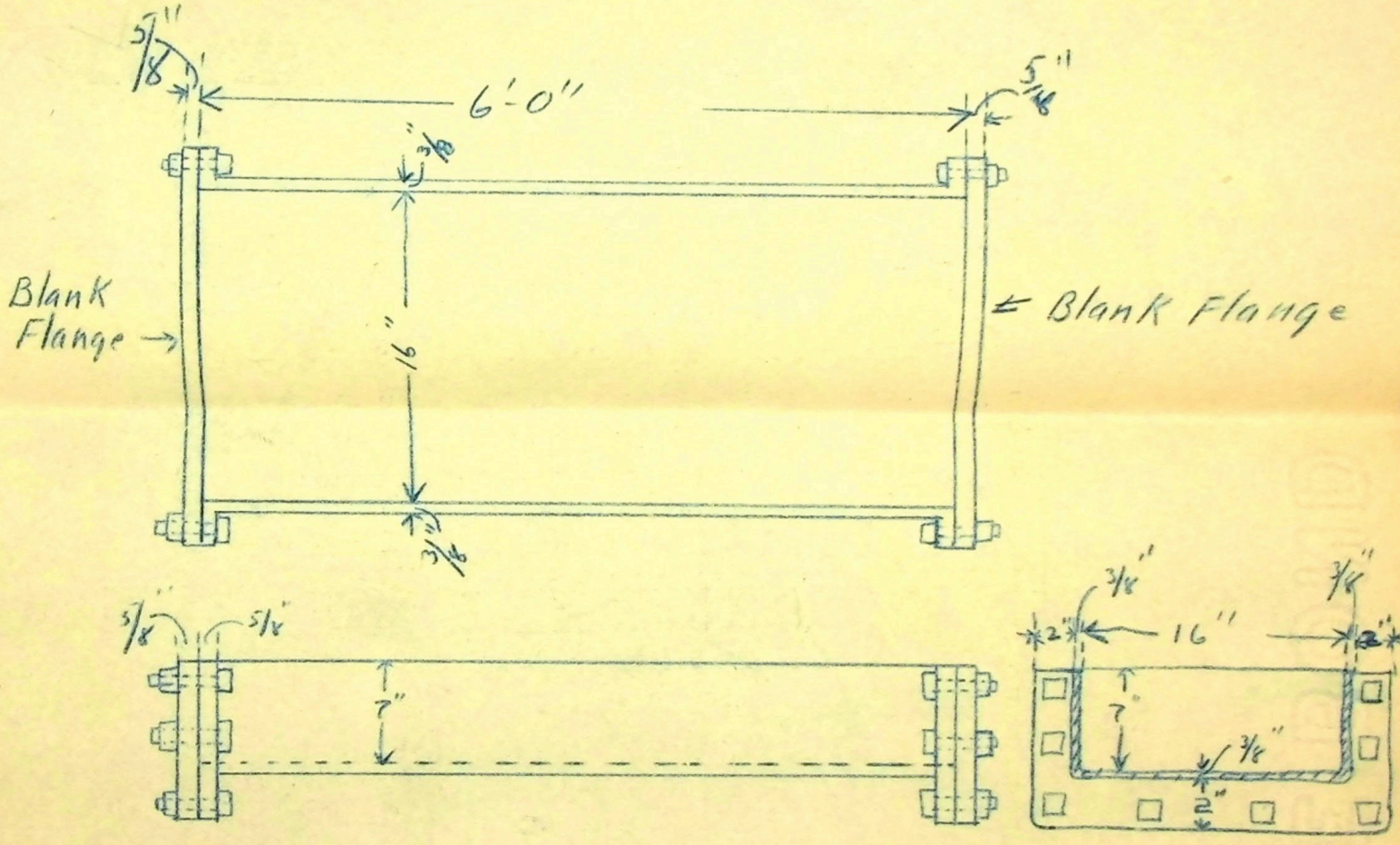
# CHAMPION COPPER CO.

Checked by \_\_\_\_\_

PAINESDALE, MICH.

Date sep 16 1912

SUBJECT C. I. Wash Trough for Captain's Office



Flanges  $\frac{5}{8}$ " Thick.  
sides & Bottom,  $\frac{3}{8}$ " Thick

make 1



No. 44215

F.P. 1381

# CHAMPION COPPER COMPANY.

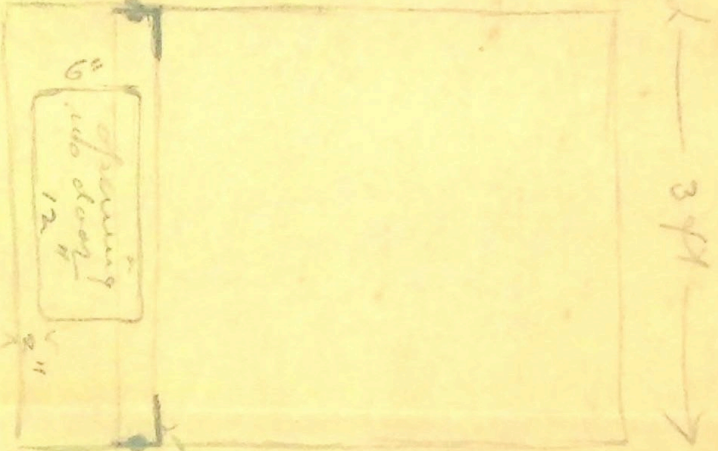
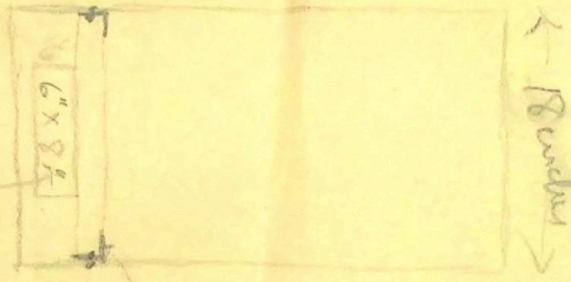
F. W. DENTON, GENERAL MANAGER.  
E. W. KRUKA, CLERK.

PAINESDALE, MICH.,



4 ft

4 ft



opening from  
10 1/4"  
1/4" min  
1/4" min  
Make out of 1/2" in plate

16"  
4" x 4" rivets to shell  
Top + bottom of 1/4" thick plate  
rivets to shell  
Make out of 1/2" in plate  
rivets to shell  
Make out of 1/2" in plate



DRAWING OFFICE SKETCH.

Copy Book \_\_\_\_\_ Page \_\_\_\_\_

Order No. 83

To be returned when Work is Finished.

Draughtsman T.H. Bennett

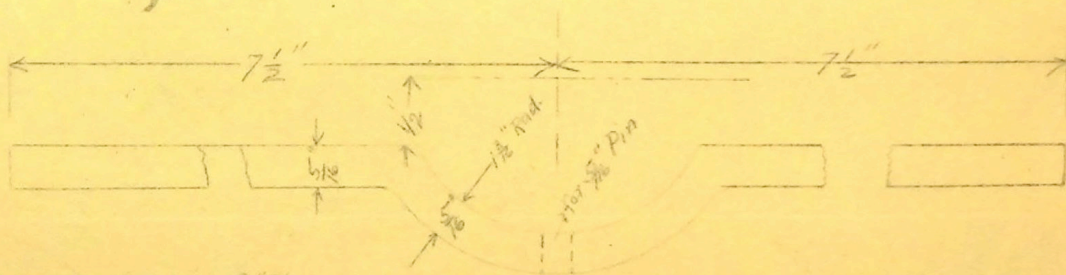
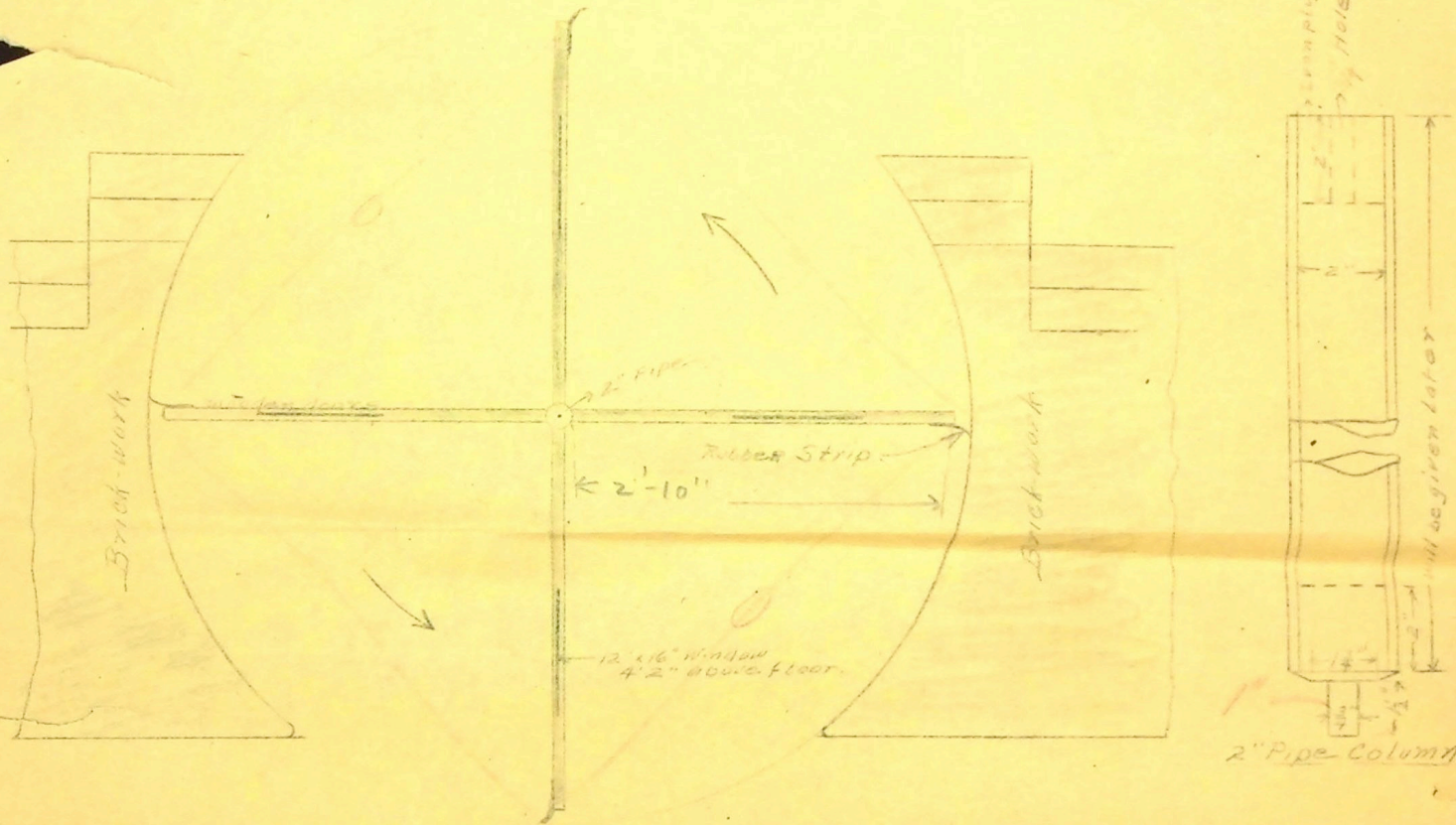
Indepd.  
F.P. 1381 - T

CHAMPION COPPER CO.

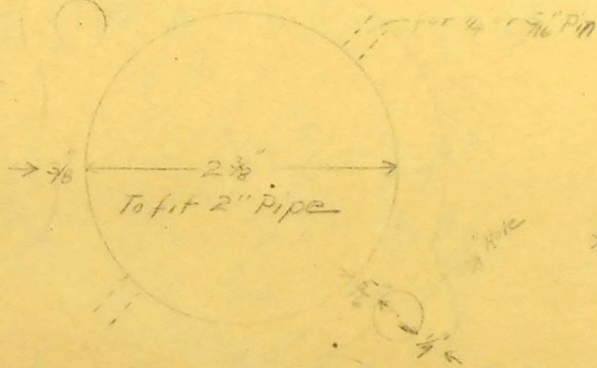
Examiner \_\_\_\_\_

Painesdale, Mich., Nov 21, 1906

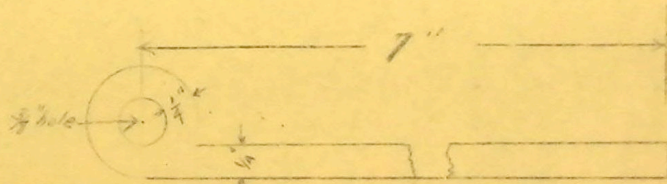
Detail of Swinging Doors for B Change House



1" x 5/16" Straps for Solid Door - Make ⑥



1" x 3/8" - Ring for Swinging Doors  
Make ③



1" x 1/4" Straps for swinging Doors  
Make ⑥



DRAWING OFFICE SKETCH.

Copy Book \_\_\_\_\_ Page \_\_\_\_\_

Order No. 82

To be returned when Work is Finished.

F.P. 1381-C

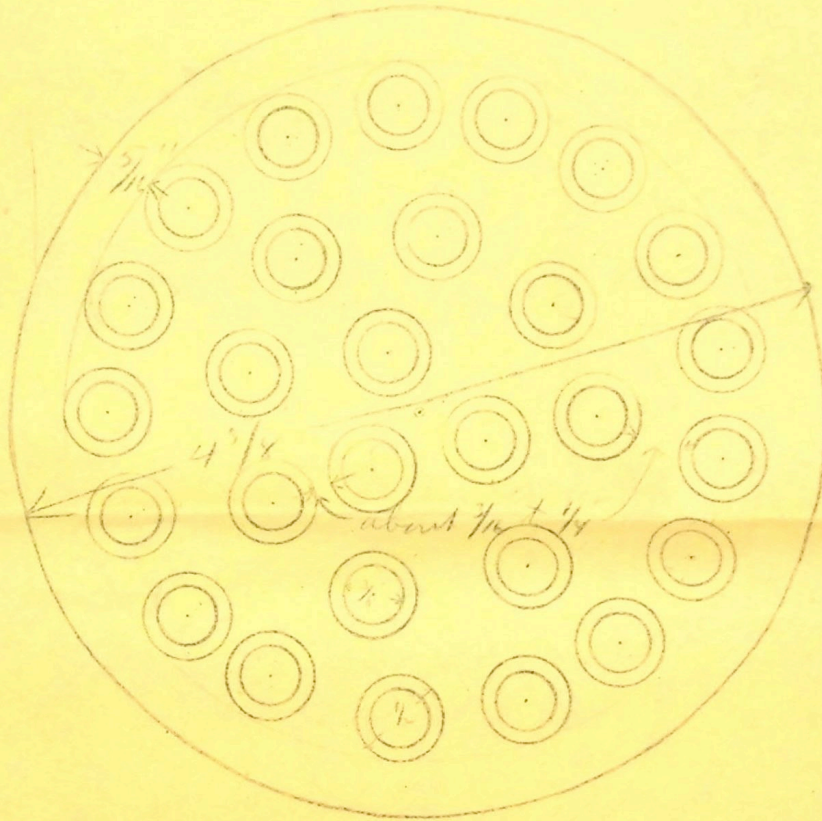
Draughtsman H. T. M.

CHAMPION COPPER CO.

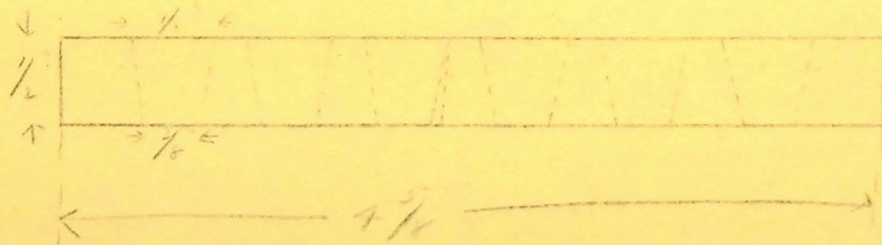
Examiner \_\_\_\_\_

*[Handwritten signature]*

Painesdale, Mich., Nov 14 1916



Scale full size



C.I. Strainer Disks for B Dry Floor Drains.

Make 12

Core Tapered Holes about  $\frac{7}{16}$ " apart. Holes Taper from  $\frac{1}{2}$ " to  $\frac{3}{8}$ "



DRAWING OFFICE SKETCH.

Copy Book \_\_\_\_\_ Page \_\_\_\_\_

Draughtsman H. J. M.

Examiner \_\_\_\_\_

Order No. 79

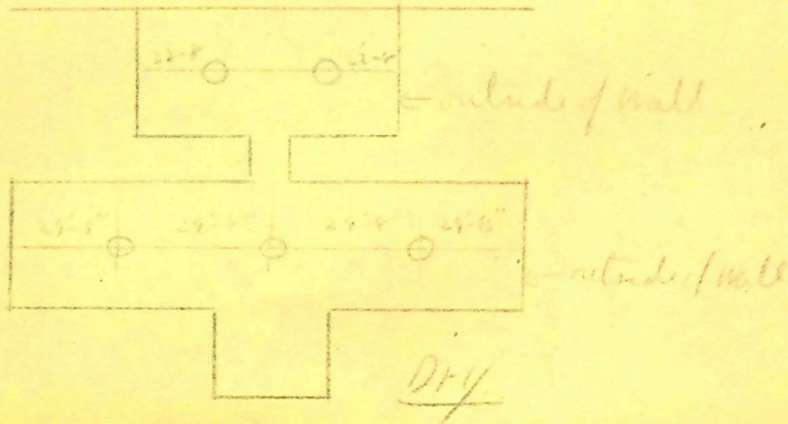
To be returned when Work is Finished.

F.P. 1381-B

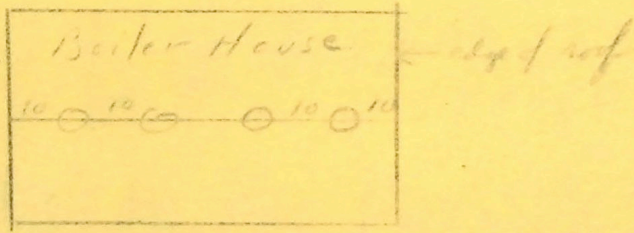
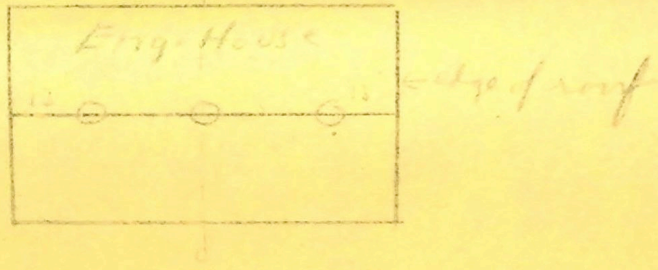
CHAMPION COPPER CO.

Painesdale, Mich., Nov. 2 1906

Indeped



Note: - Distances Approximate



Location of Ventilators on B Dry, E Eng. House and E Boiler House



DRAWING OFFICE SKETCH.

Order No. 58

F.P. 1381-A

To be returned when Work is Finished.

CHAMPION COPPER CO.

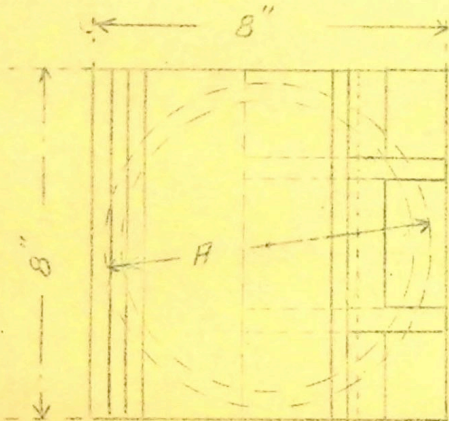
Copy Book \_\_\_\_\_ Page \_\_\_\_\_

Draughtsman H.T. Mercer

Examiner H.P.M.

Painesdale, Mich., June 21 1916

*Indexed*

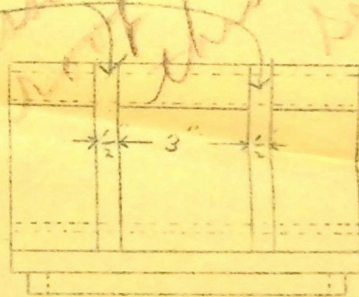
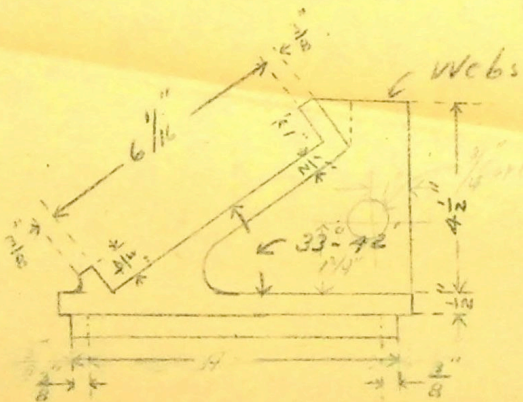


TOP CASTING for PIPE COLUMNS

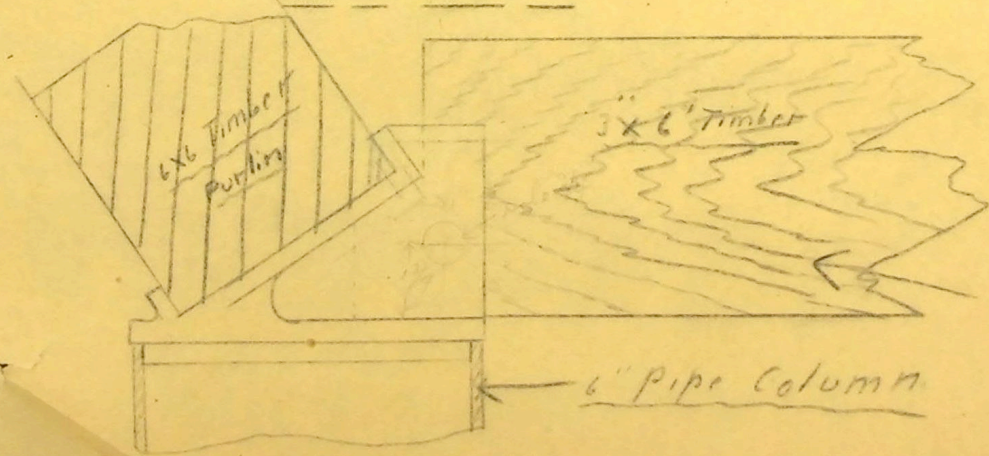
Make \_\_\_\_\_

Scale 3"=1'

*Not ordered  
 Transfer used on 75' dia of  
 17" of material  
 See sketching # 17*



NOTE:- 6" W.I. Pipe Fits over Dia. "A"  
Make 17" Scant 6"



Sketch showing  
 how casting is to  
 be used

3x6" Timber fits in  
 between webs

6" Pipe Column



# Area of #1 Dry Roof

a	1424
B	500
C	105
D	33
E	568
F	16
G	107
H	10
I	10
J	327
K	327
L	28
M	28
N	1222
O+P	1036
Q	1072
R	1076
S	584
T	584

36

9057

---

9093



CHAMPION COPPER COMPANY.

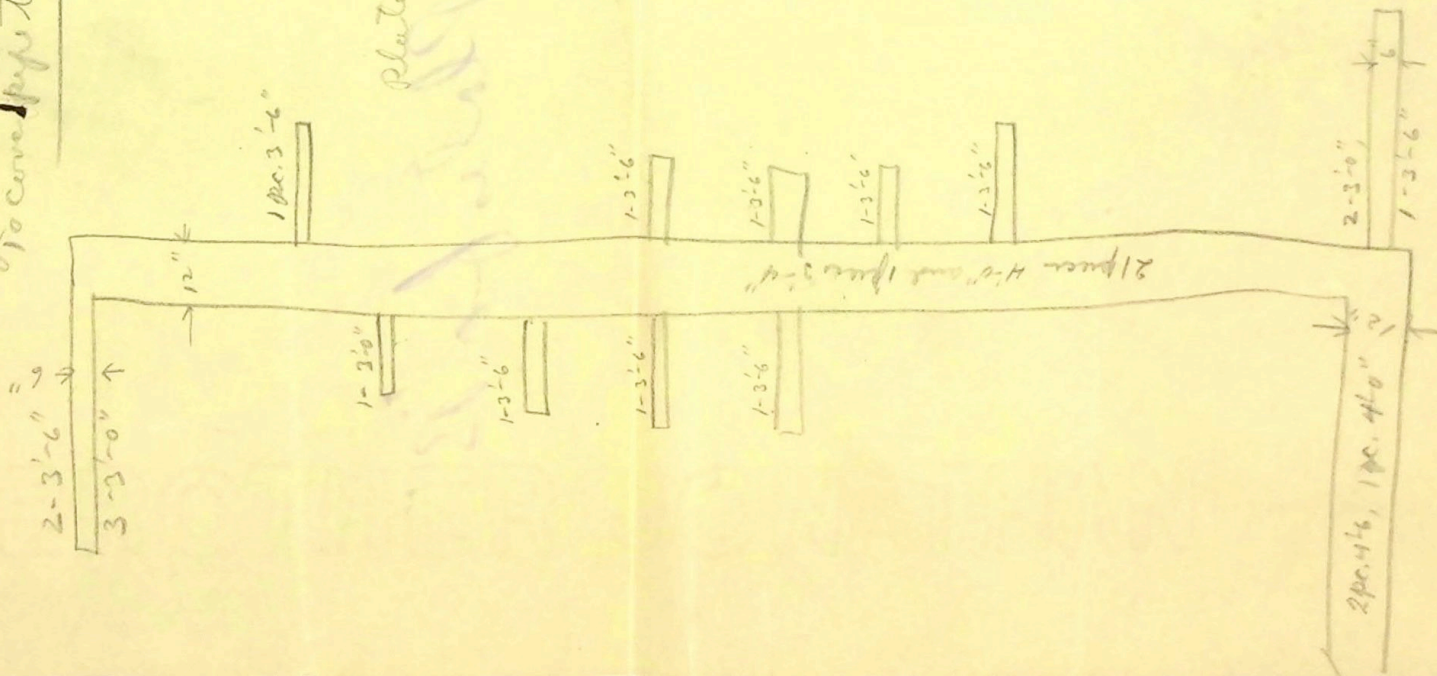
L. L. HUBBARD, GENERAL MANAGER.  
R. R. SEEBER, CHIEF ENGINEER.

ADDRESS REPLY TO  
CHAMPION COPPER CO.  
R. R. SEEBER, CHIEF ENGINEER

PAINESDALE, MICH., ..... 190.....

*C1 1/2 Plates for B. Dry  
To cover pipe trench*

*Plates all 1" thick*





# Champion Copper Company

Division of Carpenter Shop Labor.

13"  
So 32 C. Day

Date ..... 190.....

KIND OF WORK	SHOP HOURS		REMARKS			
	Work on	Cost	Other	Cost	Total No	Total
	Days	Amt	Labor	Amt	Days	Amt
Windows						
Carpenter Labor	65 1/4	170.95	24 8/4	649.23	313 1/2	820.18
Smith			29 1/4	80.60		



Change House  
B & C  
Areas.

LEFAX FILING INDEX

"B" Change House,  
Area of Floors.

Main change room	3689 <sup>sq'</sup>
Front wing	620
Wash Room	2040
	<hr/>
	6349

Outside Dimension -



B Change House,  
area of Floors.

Main Change Room	3689
Front Wing	620
Wash Room	2040
	<hr/>
	6349

Outside Dimension -

Change House  
B & C  
Areas

LEFAX FILING INDEX

Heating & Plumbing.

Heating System	\$
T. E. Hoyer Co.'s Price	1425.00
18 Water Closets	448.05
1 12ft. urinal	75.00
Piping & crating	10.95
Freight	27.22
	<hr/>
10 Showers	356.25
Freight	17.57
	<hr/>
5 Tubs.	112.00
Freight	13.15
	<hr/>
	125.15

Change House  
B

LEFAX FILING INDEX

B Change House  
Roof area.

Wash Room  
2(20x70.5) = 2820  $\text{ft}^2$  = 110.71

Change Room  
2(20x121) = 4840  $\text{ft}^2$  = 190.02

Pipe Room (Proposed)

2(9x36) = 648  $\text{ft}^2$  = 9  
36 sheets, 9' long = 25.44

Cost, #22 gal. cor. iron = 2.56  $\frac{1}{4}$   
per 100 $\text{ft}^2$  = .0257 per lb.  
or 3.926 per square,  $\checkmark$   
or 1039 per sq. foot

110.71  
190.02  

---

25.44  
Total cost. 326.17

76.52  
25.44  

---

103.96

LEFAX FILING INDEX

"B" Dry.  
Costs. (1906)

493 Lockers	1463.68
5- 5 $\frac{1}{2}$ x24 Tubs	125.15
10 Showers	373.82
18 Closets	561.22
157 ft. c.i. Trough	228.60
Ventilators	93.46

Heating, (T. E. Hoyer) 1425.00

Blacksmith & Mach. Labor. 663.08

LEFAX FILING INDEX

LEFAX ORIGINAL COPY. 1910 BY J. C. PARKER



Lo 32. C. Dry  
Mason Labor  
Surface "  
Teaming "  
Carpenter "  
Black Smith "

428<sup>3</sup>/<sub>4</sub> "

147<sup>3</sup>/<sub>4</sub> "

8<sup>3</sup>/<sub>4</sub> "

313<sup>1</sup>/<sub>2</sub> →

29<sup>1</sup>/<sub>4</sub> →

1185 93

781 75

37 08

1504 76

820.18

80.60

\$2405.54

2.196

0.069

2.787



Champion Copper Co

Painting  
New dry in side ceiling  
two coats.

J. Beaudette  
Painesdale

~~Turned in Mich~~



CHAMPION COPPER COMPANY.

L. L. HUBBARD, GENERAL MANAGER.  
E. W. KRUKA, CHIEF CLERK

ADDRESS REPLY TO  
CHAMPION COPPER CO.  
L. L. HUBBARD, GEN. MGR.

PAINESDALE, MICH., Mar 5 1907

Mr. E. W. Kruka,

Dear Sir:-

The following is due  
Chas. Hansohn for painting at "B" dry,  
done in Jan.

44 windows	_____	3.75
Elec. Wire supports	_____	2.80
		<u>6.54</u>

H. T. Mueser,



Address Reply to  
CHAMPION COPPER CO.  
R. R. SAUBER, Chief Engineer

12" wide 1" thick,

22 pc. - 4'-0" long  
1 " 3'-4" "  
2 " 4'-6" "

6" wide, 1" thick

11 pc. 3'-6" long.  
6 " 3'-0" "

CHAMPION COPPER COMPANY.  
L. L. HOWARD, GENERAL MANAGER.  
R. R. SAUBER, Chief Engineer.

C. I. Plates,



Blacksmith and Machinist Labor on construction of C. Camp House

44 Day Blacksmith Labor 12249

204 1/2 " Machinist Labor 54059

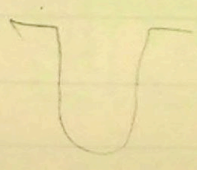
Total \$ 66308



493 Start Locks	146368
5-5 1/2" - 2 1/4" Bath Tubs	12515
Shower Bath Fixtures	37382
Closets	56122
Cast Iron Wash Troughs <sup>157 feet</sup>	22860
<sub>1.456 per lin. ft.</sub>	9346
Ventilators	

16 Wash Troughs  
 24 pieces of Cast Iron Trough.

# 624  
 Red.





L. Wolff Manufacturing Company.

ROUGHING IN MEASUREMENTS.

Chicago, .....

Plumber .....

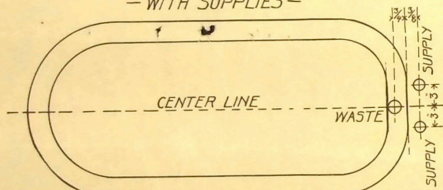
Owner .....

Location .....

The measurements and description as given on attached sheets are according to the specifications furnished us. Should there be any deviation from this when you order goods, these measurements will be void and new measurements should be asked for same.  
We furnish measurements according to your instructions and cannot be held responsible should you order material differing in description or size from our memoranda, and when you order the goods for this job, be particular to state that goods are to fit "Roughing in Measurements" furnished by us.

F-1785.

- WITH SUPPLIES -



LENGTH OVER RIM — WIDTH OVER RIM

4'-0"	29 1/4"
4'-6"	29 1/2"
5'-0"	29 3/4"
5'-6"	29 7/8"
6'-0"	30"

NIOPA TUB.

With Fuller "Corona" Double Bath Faucet, No. 0 Connected Overflow and Waste.

L. Wolff Manufacturing Company.

ROUGHING IN MEASUREMENTS.

Chicago, 7-30-06

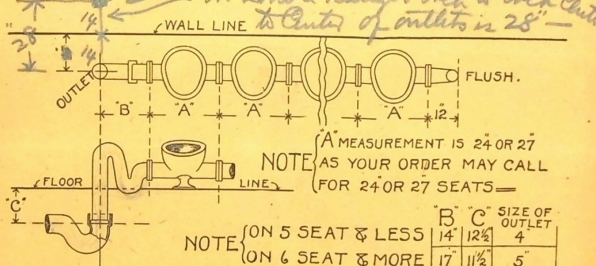
Plumber *Champion Copper Co.*

Owner *Mech.*

Location .....

The measurements and description as given on attached sheets are according to the specifications furnished us. Should there be any deviation from this when you order goods, these measurements will be void and new measurements should be asked for same.

We furnish measurements according to your instructions and cannot be held responsible should you order material differing in description or size from our memoranda, and when you order the goods for this job, be particular to state that goods are to fit "Roughing in Measurements" furnished by us.



SYPHON CLOSET RANGE

NOTE: If with R. H. Outlet, reverse measurements.

*F5139 - Range 27 seats  
9 seat double*

L. Wolff Manufacturing Company.

ROUGHING IN MEASUREMENTS.

Chicago, .....

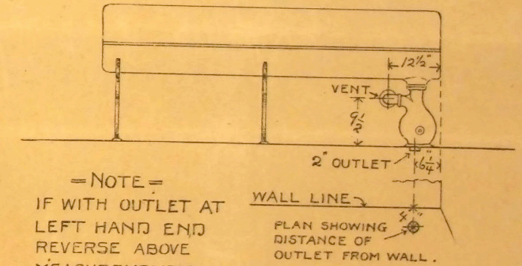
Plumber .....

Owner .....

Location .....

The measurements and description as given on attached sheets are according to the specifications furnished us. Should there be any deviation from this when you order goods, these measurements will be void and new measurements should be asked for same.

We furnish measurements according to your instructions and cannot be held responsible should you order material differing in description or size from our memoranda, and when you order the goods for this job, be particular to state that goods are to fit "Roughing in Measurements" furnished by us.



- NOTE -  
IF WITH OUTLET AT  
LEFT HAND END  
REVERSE ABOVE  
MEASUREMENTS

WALL LINE  
PLAN SHOWING  
DISTANCE OF  
OUTLET FROM WALL.

WASHOUT URINALS

*F5462*