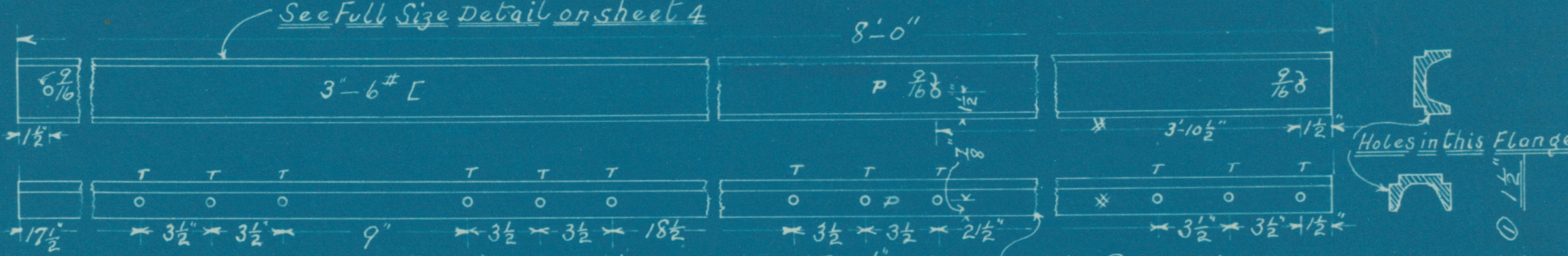


Detail for Sander.

See Anders 5-3-12.

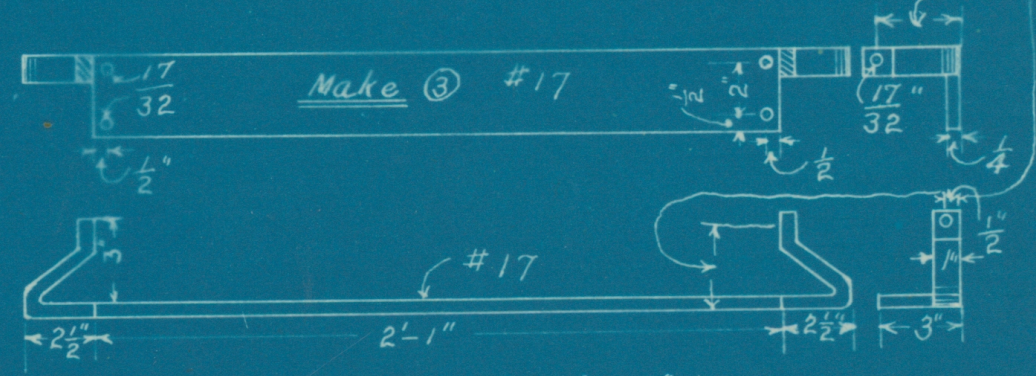
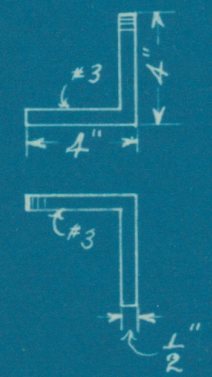
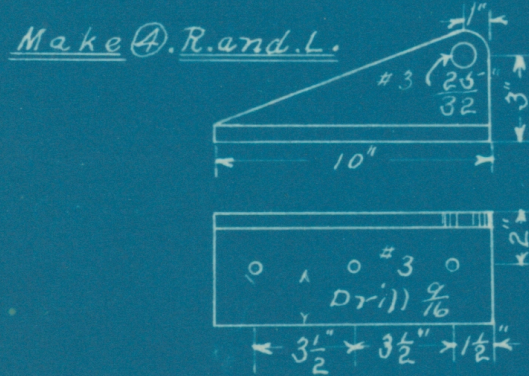
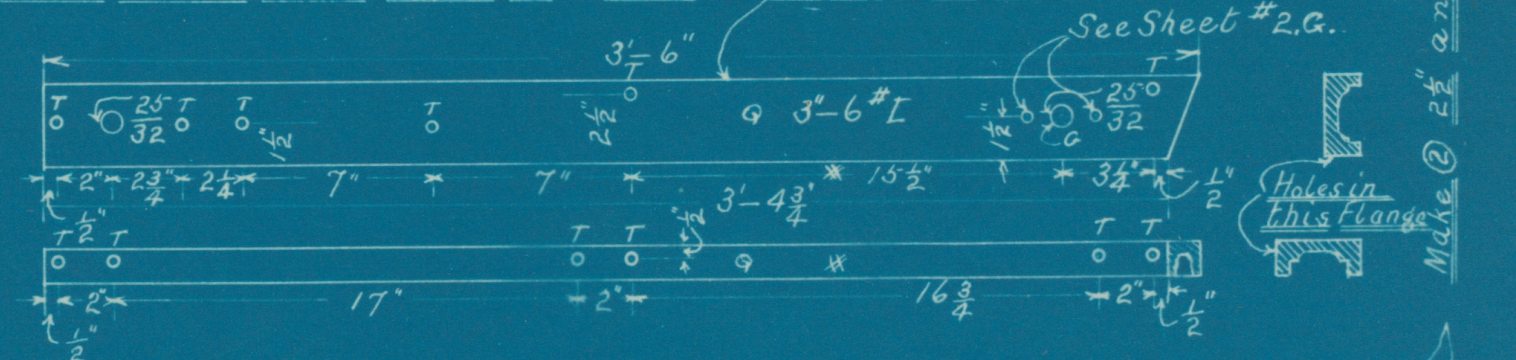
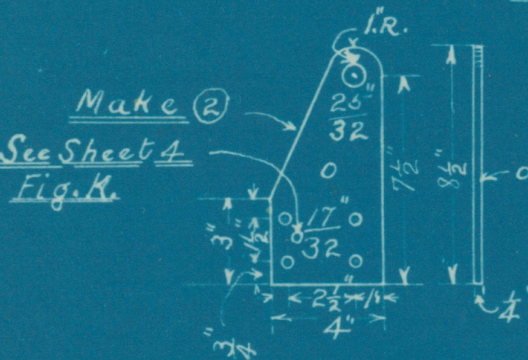
SHEET I.

See Full Size Detail on sheet 4



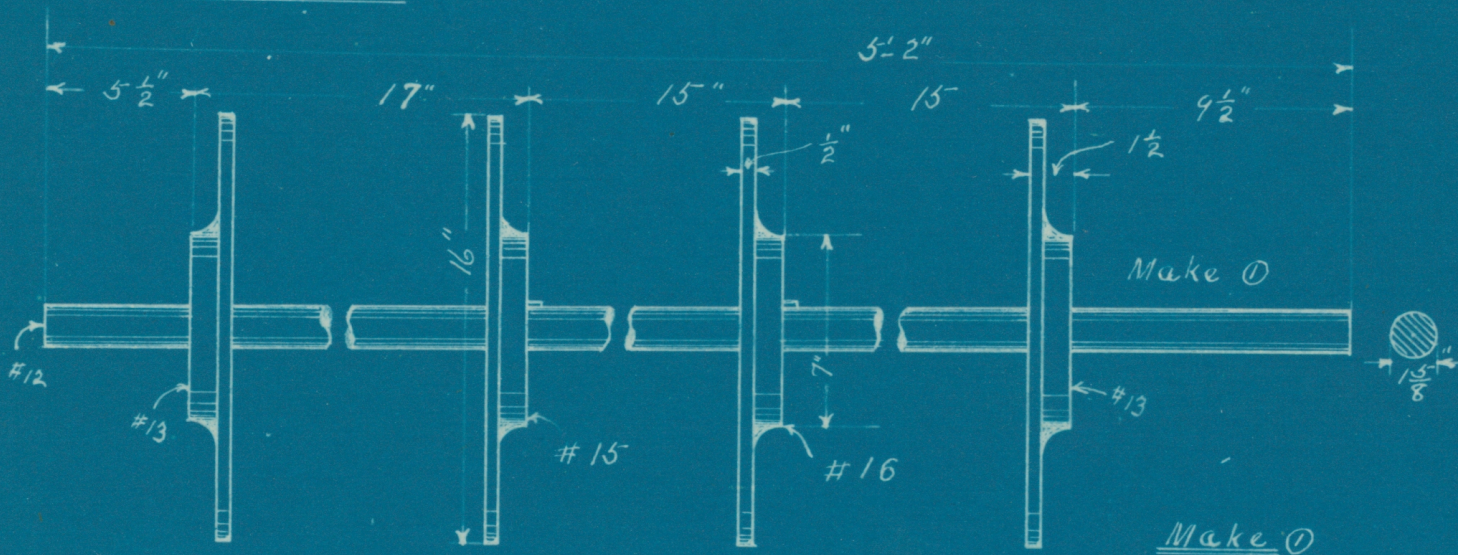
All Holes Marked T. To Be Tapped For 1/2" Bolts

Make ② R. and L.

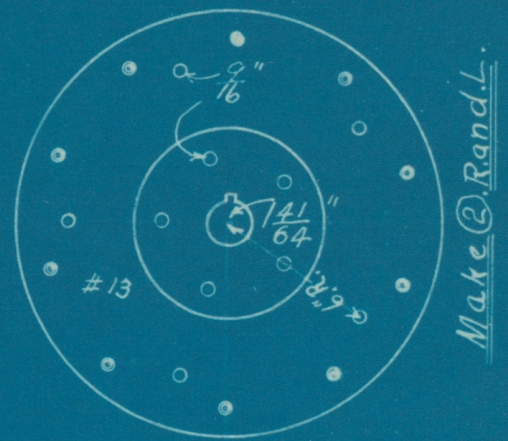


Scale 1/2" = 1'  
 Details for Sander  
 Jno. Angore 5-3-12.

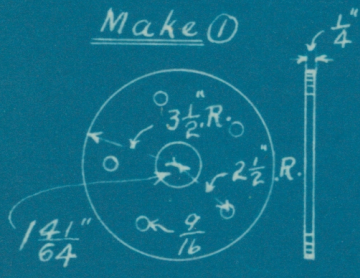
SHEET. 3.



All Holes Marked T To Be Tapped For 1/2" Bolt. Outside Holes Countersink For #16 Screws.



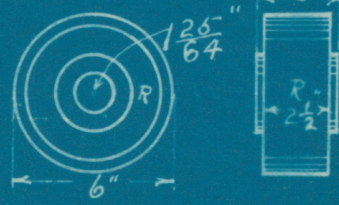
Make 1



Make 4



Make 4



Make 1

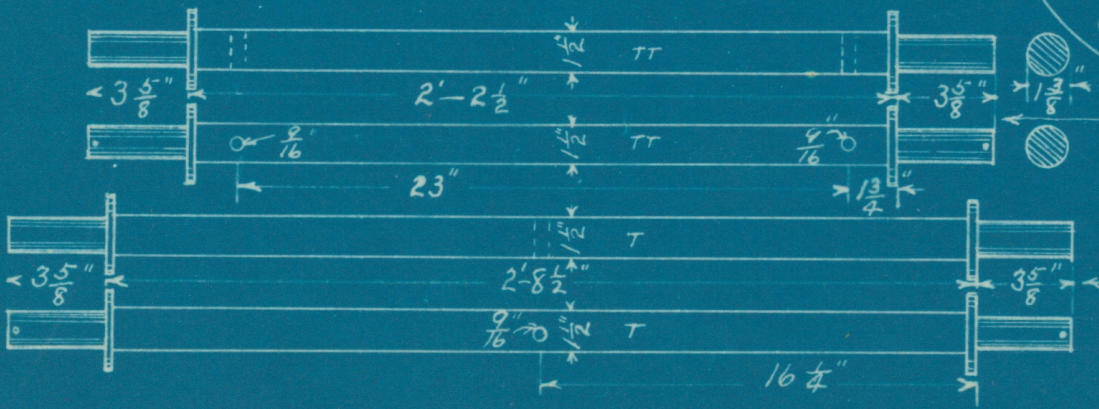


Make 1

Scale 1 1/2" = 1'

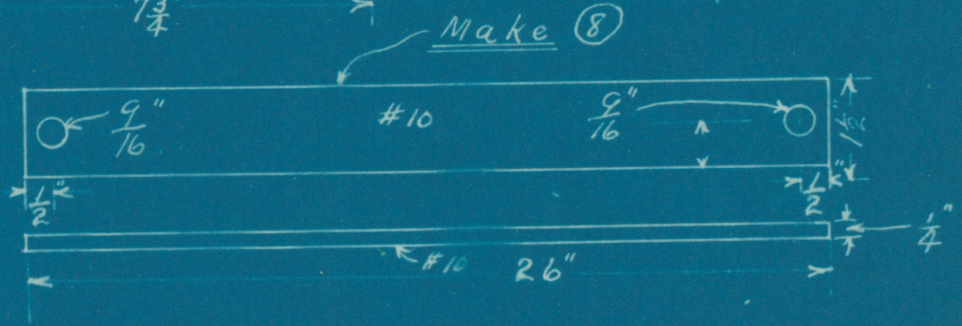
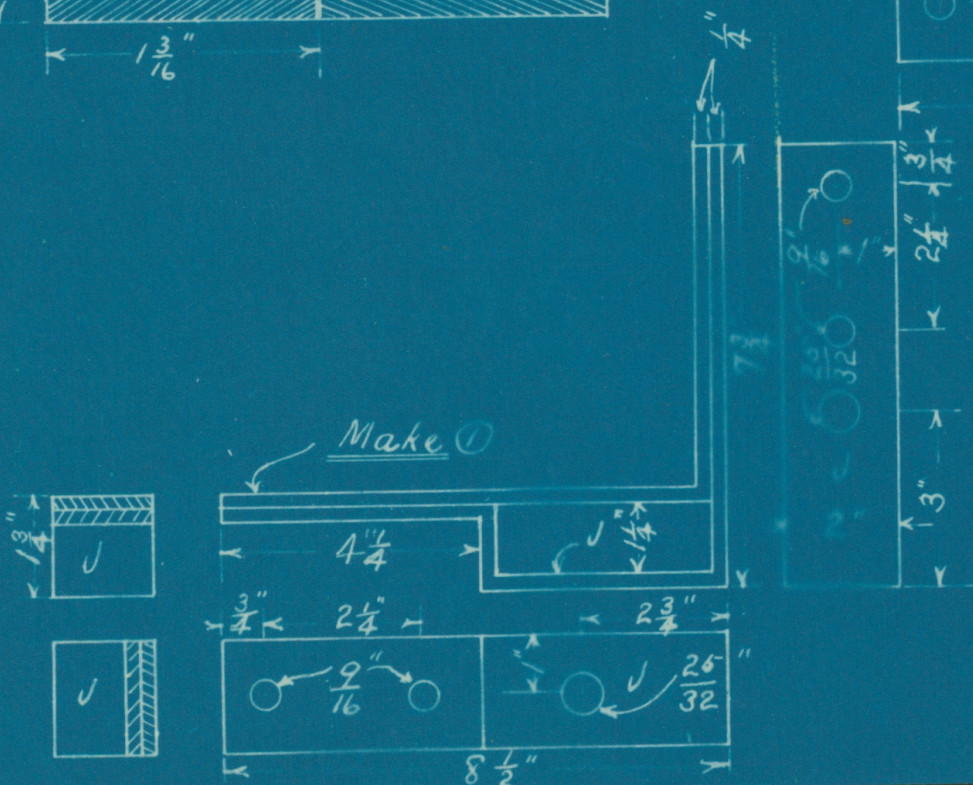
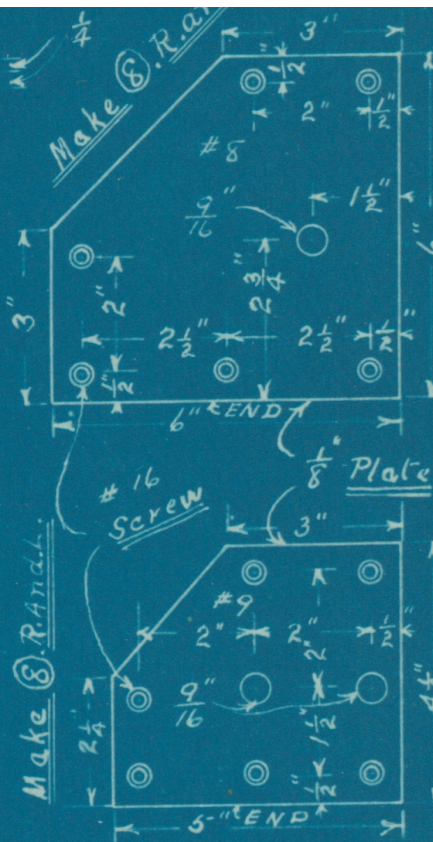
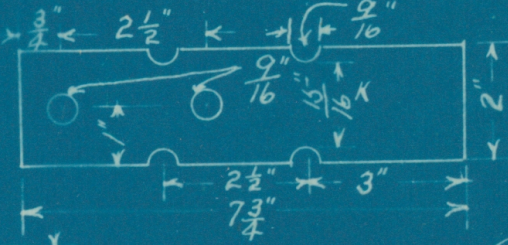
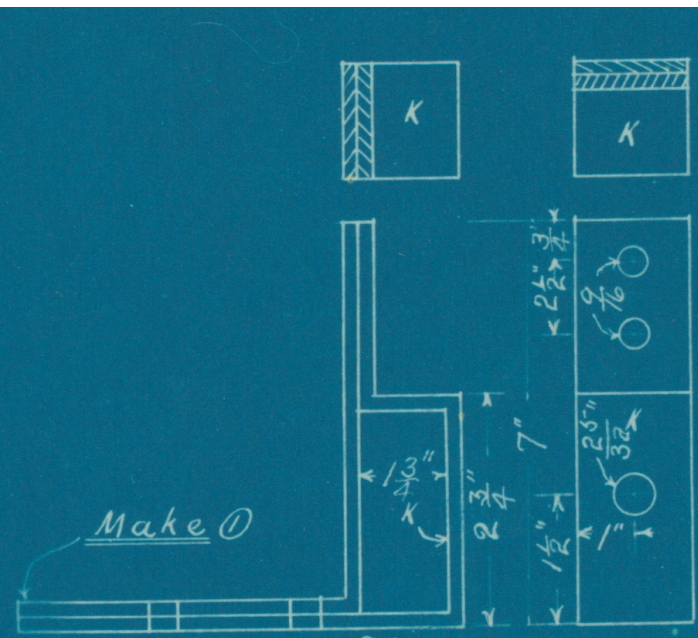
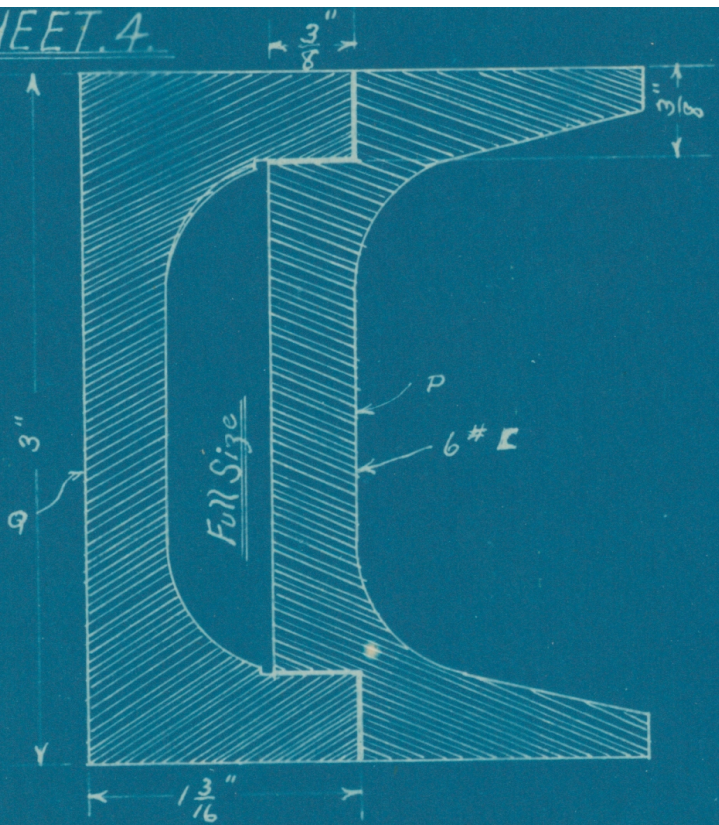
Make 1

Make 1



Details for Sander

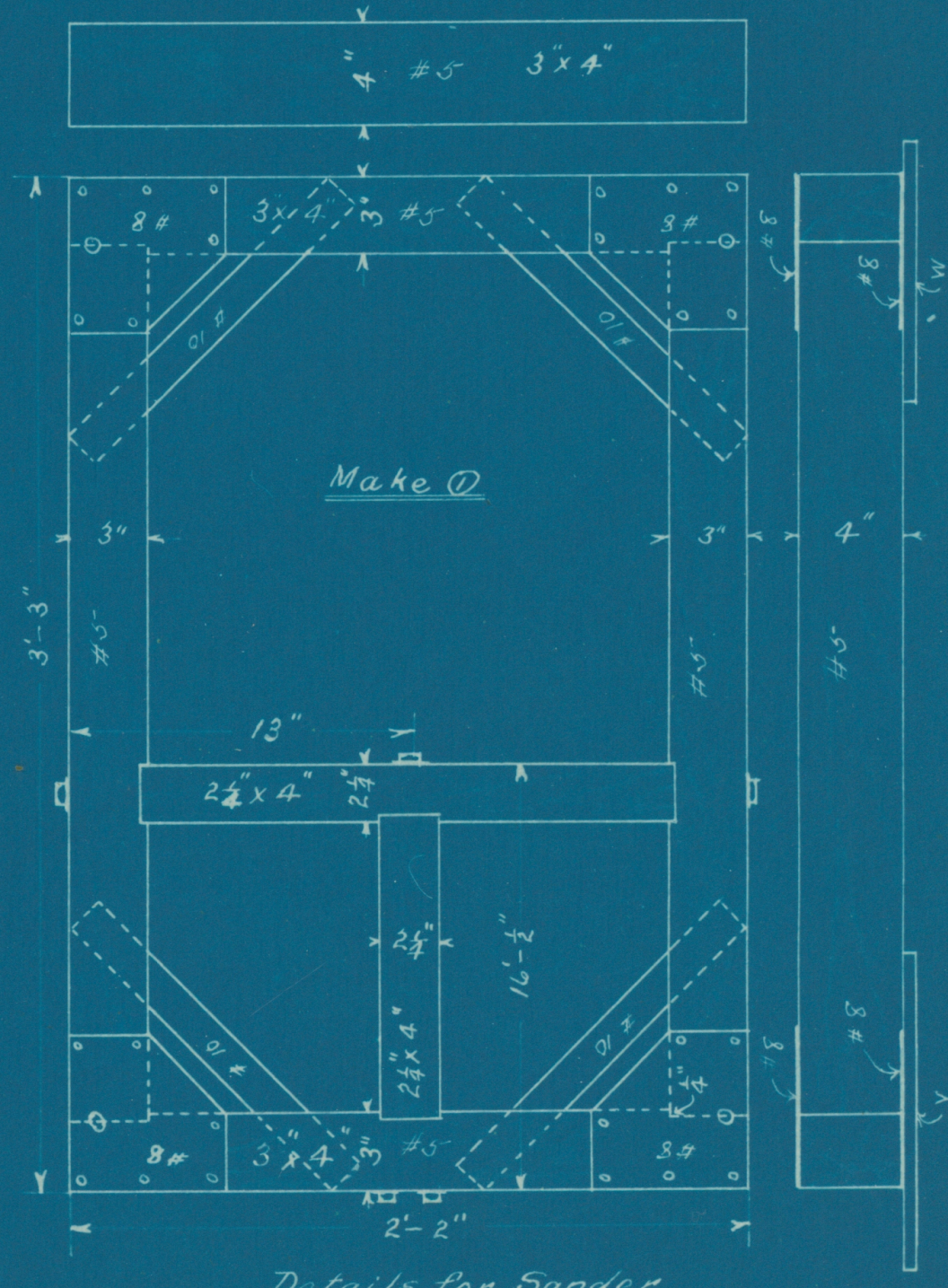
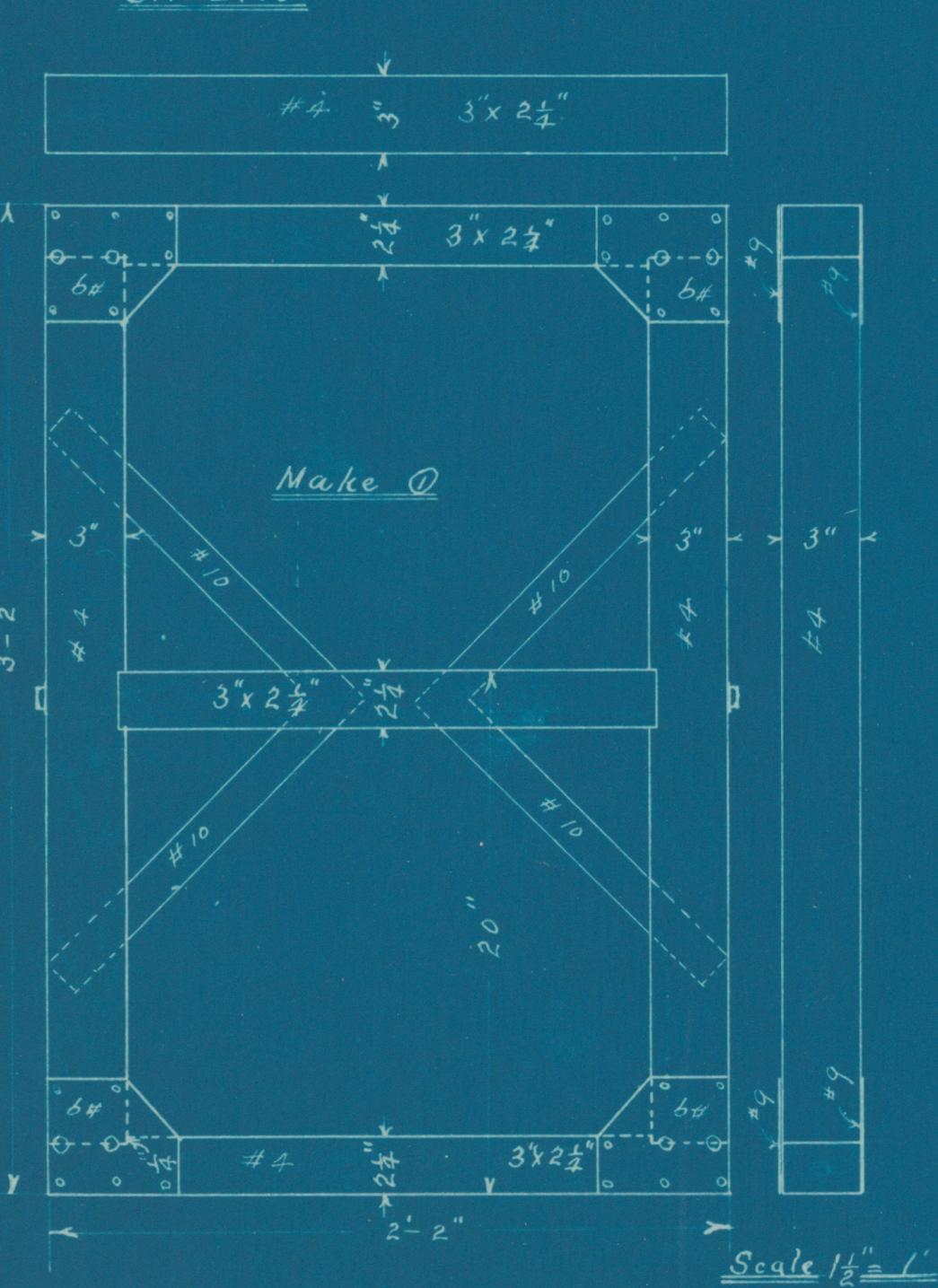
Jno. Angore.  
5-3-12.

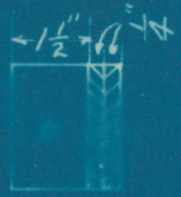


Scale 3"=1'

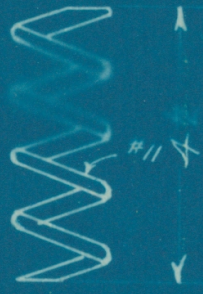
Detail for Sander  
Jno. Angora 5-3-12.

SHEET. 5.

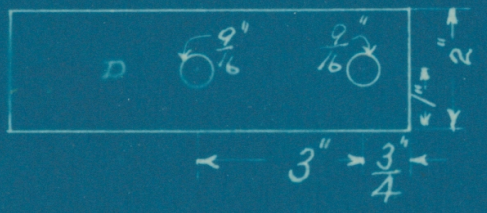
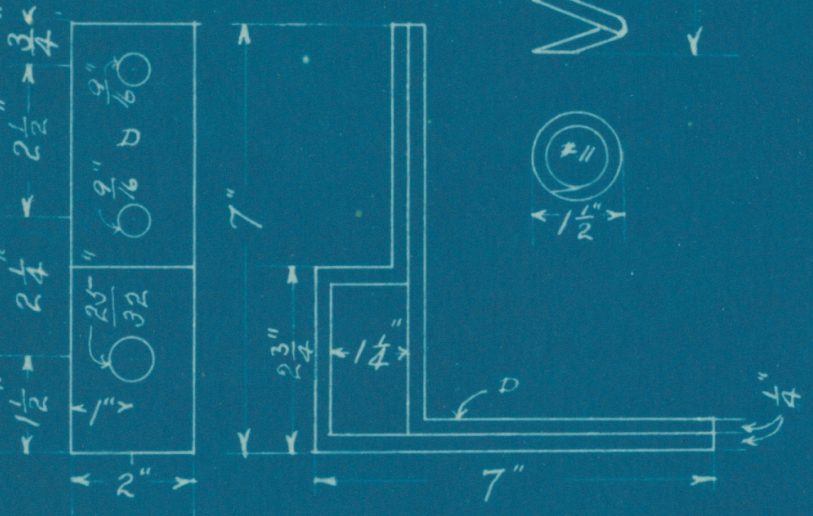




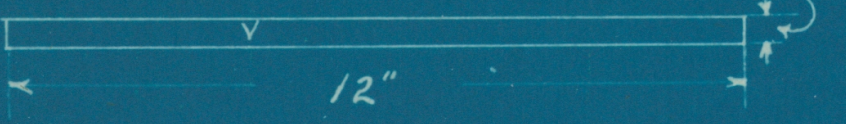
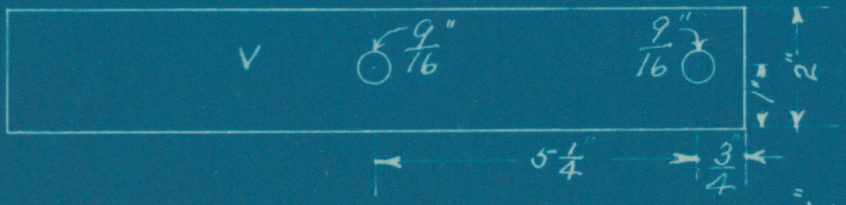
Make ①



Make ②

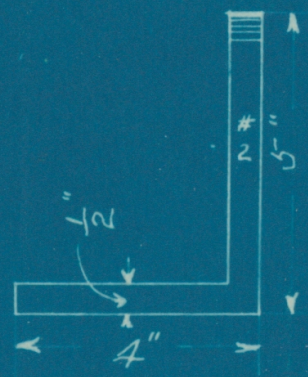


Make ②

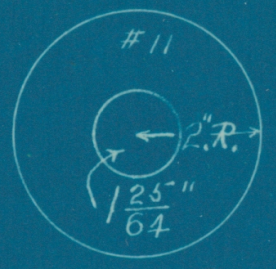


Detail for Sander.

Make ②



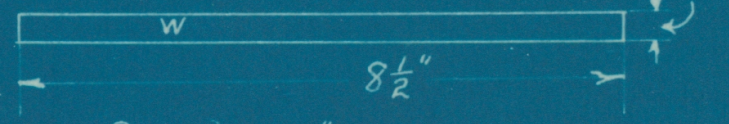
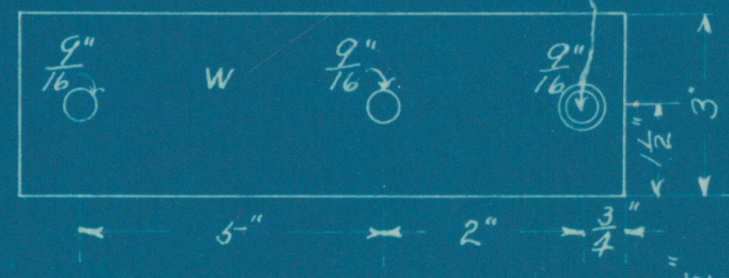
Make ①



Make ②

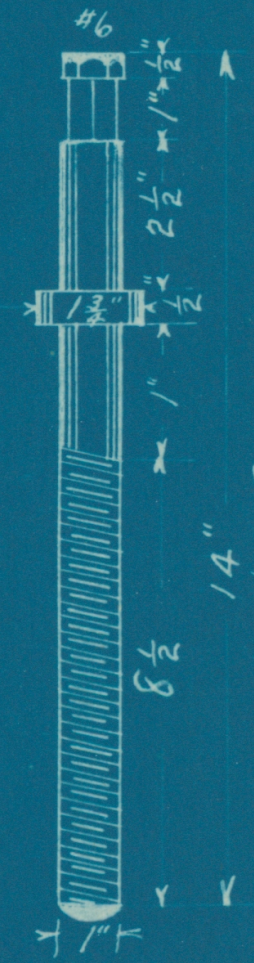
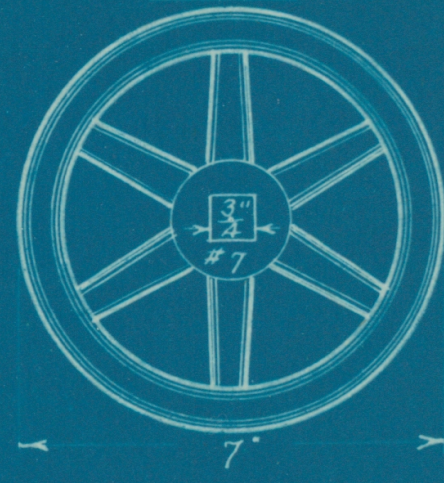


Countersink For Bolt



Scale 3"=1'

Make ①



Make ①

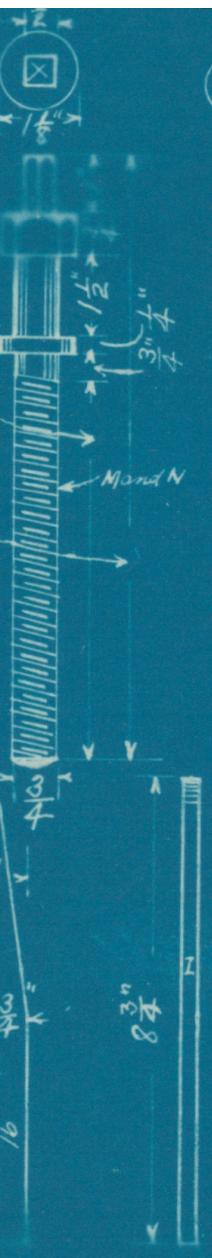
SHEET 7.

Make 2 M. 2 N.

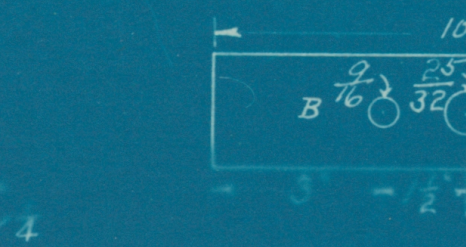
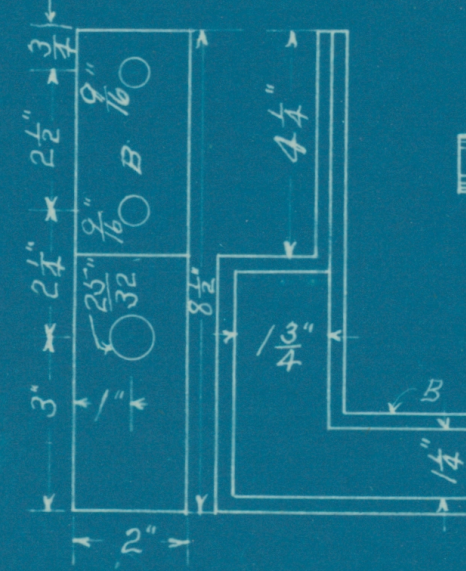
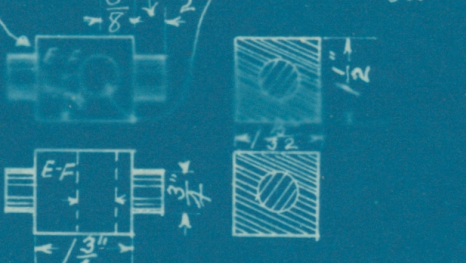
1" R

3 3/4" 4" 2 1/2" 2 3/4" 3/4" 3/4"

Make 2

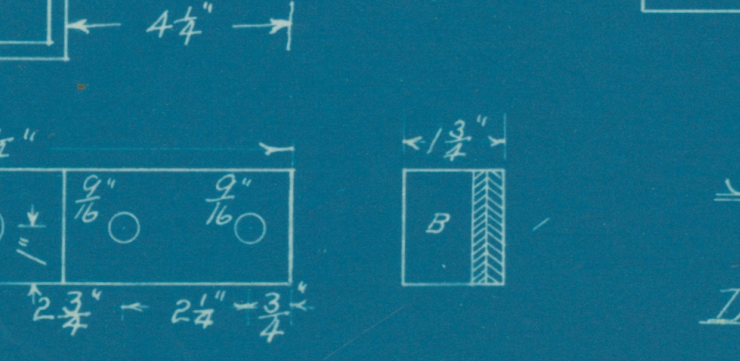
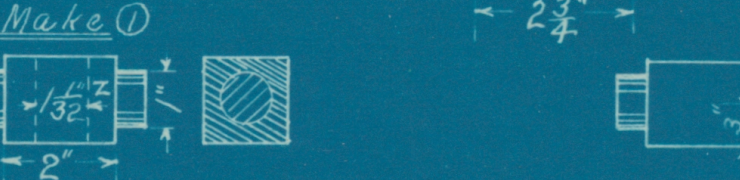
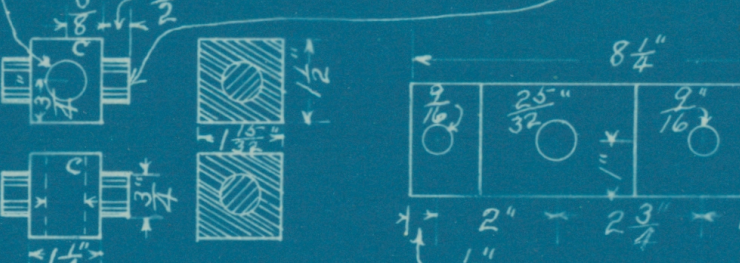


Make 4 Drill 25/32

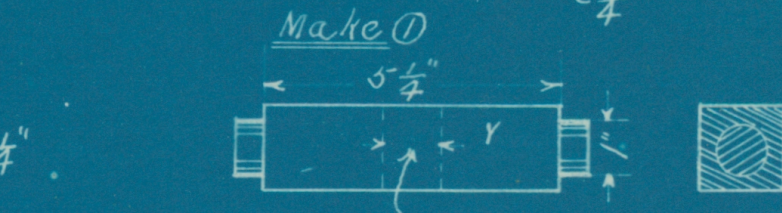
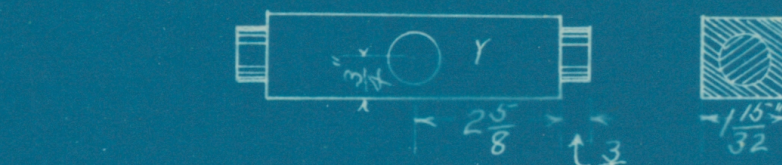
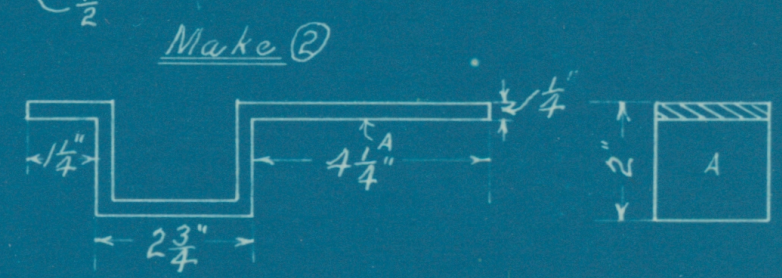
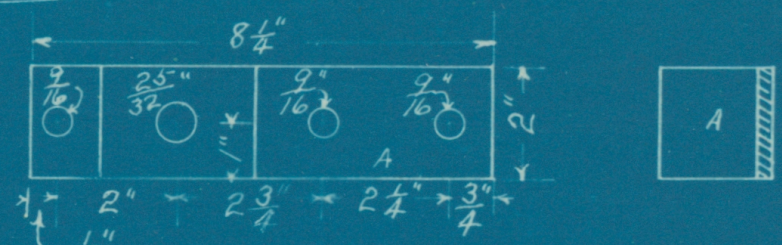


Tapp 2 Nuts for M. and 2 for N. Sheet 7

Tapped For 3/8 M. and N. Sheet 7 Make 4



Tapp 2 Nuts for M. and 2 for N. Sheet 7



Tapped For 1" Sec #6 Sheet 6

Scale 3"=1

Details for Sander No. Arigore. 5-3-12.