

Adams Township, MI
Requisition No.

ENGINEER'S OFFICE

F. P. No. 1623-A

Drawn by Mercer

CHAMPION COPPER CO.

PAINESDALE, MICH.

Checked by

Date May 1912

SUBJECT Reinforcing Rods for Concrete Well

256 pieces $\frac{3}{4}$ " rod, about 10 ft. long

32 " " " $6\frac{1}{2}$ " "

32 " " " $1\frac{1}{2}$ " "

squate preferred. Can use any size from $\frac{1}{2}$ " to $1\frac{1}{2}$ "

32 pieces 1" pipe 2'-0" long, for distance pieces.
no threads.

30 double strands wire rope, 70 ft. long

30 " " " " 76 " "

Adams Township, MI
 Requisition No. _____

ENGINEER'S OFFICE

F. P. No. 1623-13

Drawn by M. C. ...

CHAMPION COPPER CO.

PAINESDALE, MICH.

Date Sept. 19 1912

Checked by _____

SUBJECT Some Figures for Proposed Basin at Pump Station

	Square Tank	Slaping Tank	
		2:0 Top 2:5 Bottom	1:0 Top 1:5 Bottom
Capacity, Full to Top Gals.	288500	485000	485000
" Water 9" deep "	222000	333000	333000
" " 7' " "	171000	194000	194000
Yds of Concrete	289	547	305
" " Back Fill	1020	0	0
Cost of Concrete, @ \$6 per yd.	\$1734	\$3282	\$1830
" " Back Fill @ 25¢ " "	255	0	0

Figures do not include inlet & outlet channels nor concrete Braces, as these are same in Both cases.
 Roof Not included either.

Adams Township, MI
Requisition No.

ENGINEER'S OFFICE

F. P. No. 1623-C

Drawn by *Mercer*

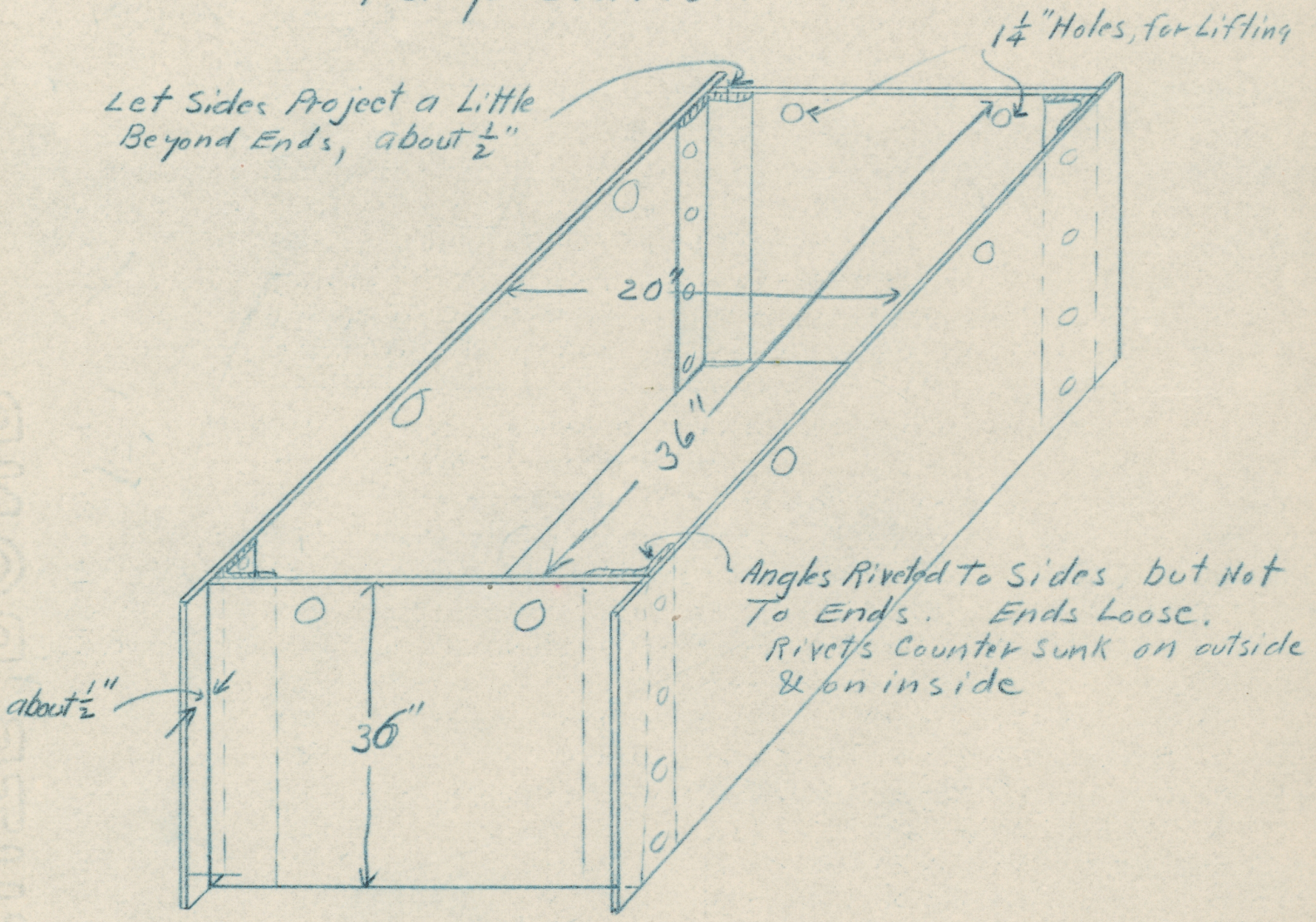
CHAMPION COPPER CO.

Checked by

PAINESDALE, MICH.

Date *Sept. 25* 191*2*

SUBJECT *Steel Form Box for Concrete Piers
Pump Station*



Make 2

Adams Township, MI
Requisition No.

ENGINEER'S OFFICE

F. P. No. 1623-D

Drawn by *Moran*

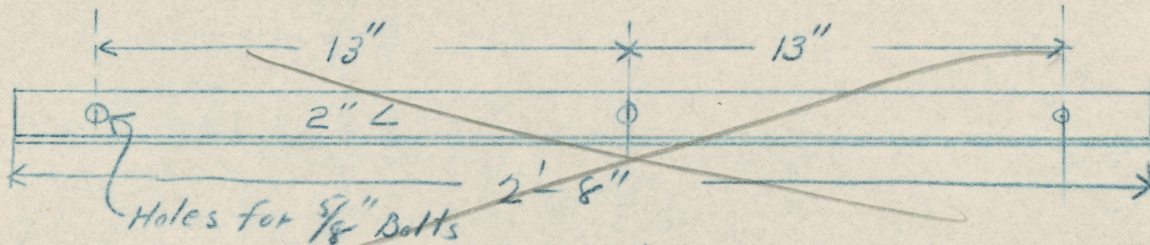
CHAMPION COPPER CO.

PAINESDALE, MICH.

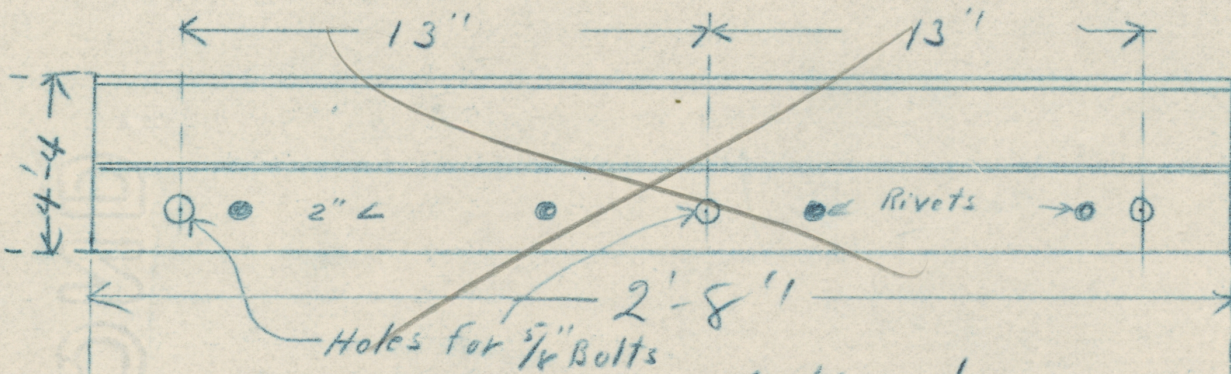
Checked by

Date 11-21 1914

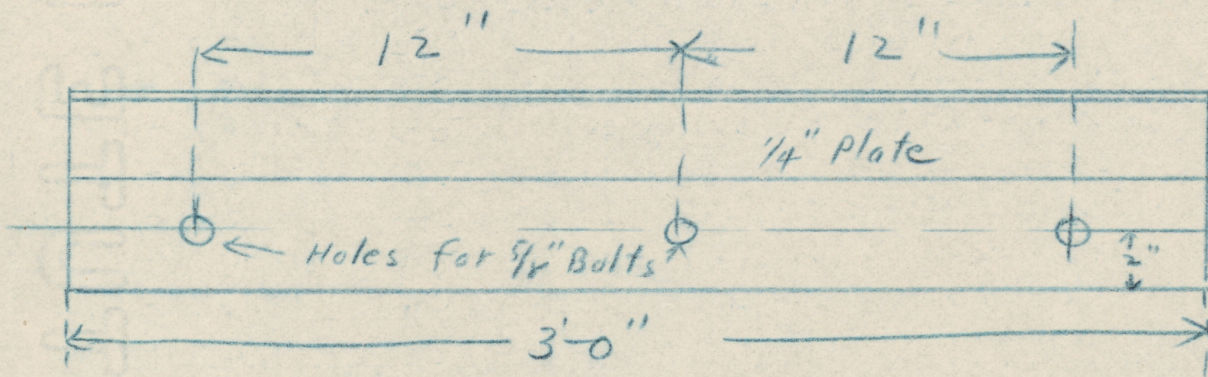
SUBJECT *Iron Work for Intake at Pump Station*



Make 2



Make 1



Make 1

Requisition No. _____

ENGINEER'S OFFICE

F. P. No. 1623-E

Drawn by Mercer

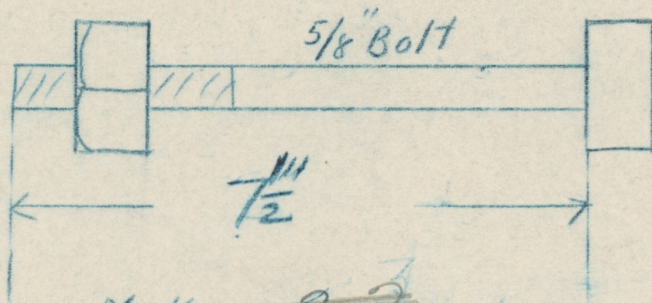
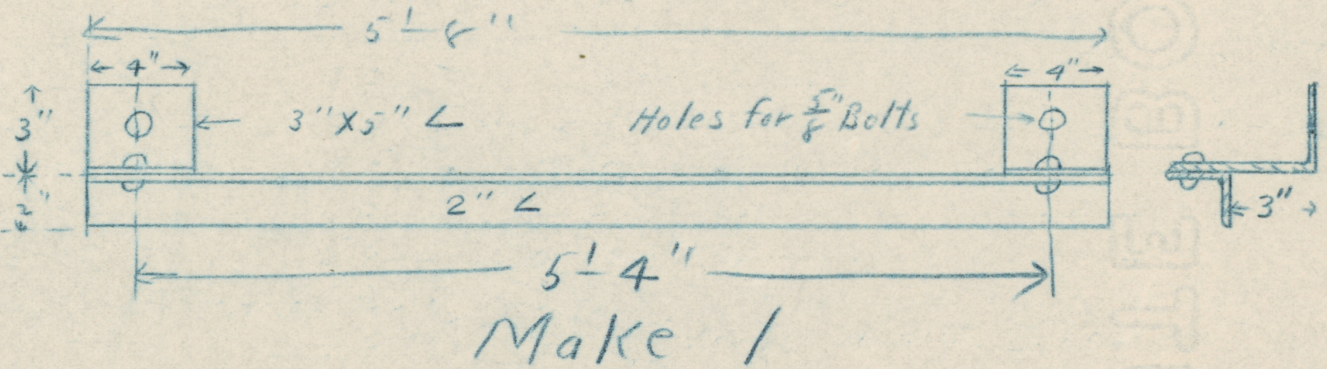
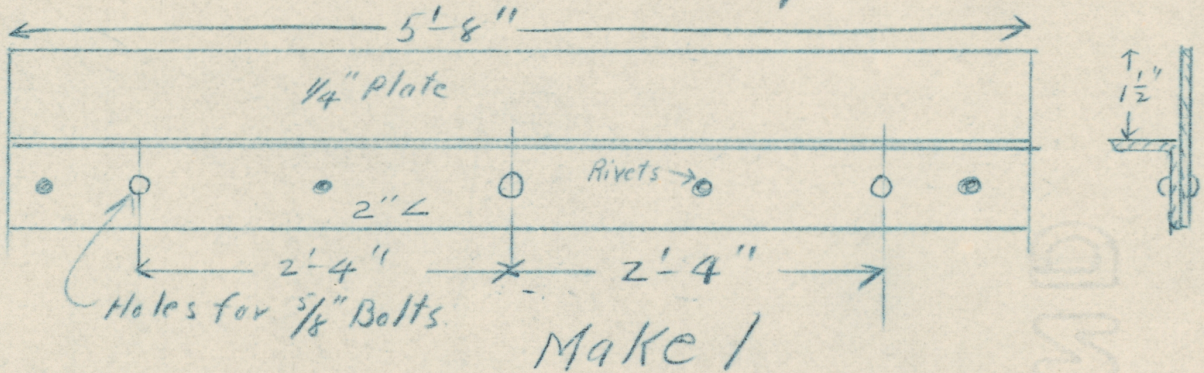
CHAMPION COPPER CO.

PAINESDALE, MICH.

Checked by _____

Date Nov. 21 1912

SUBJECT Irons for Intake at Pump Station



Make ~~23~~ L =
14

Requisition No. _____

ENGINEER'S OFFICE

F. P. No. 1623 F

Drawn by *Mercer*

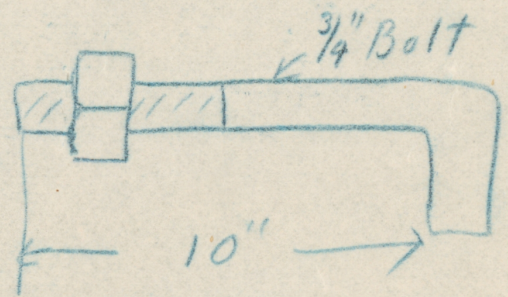
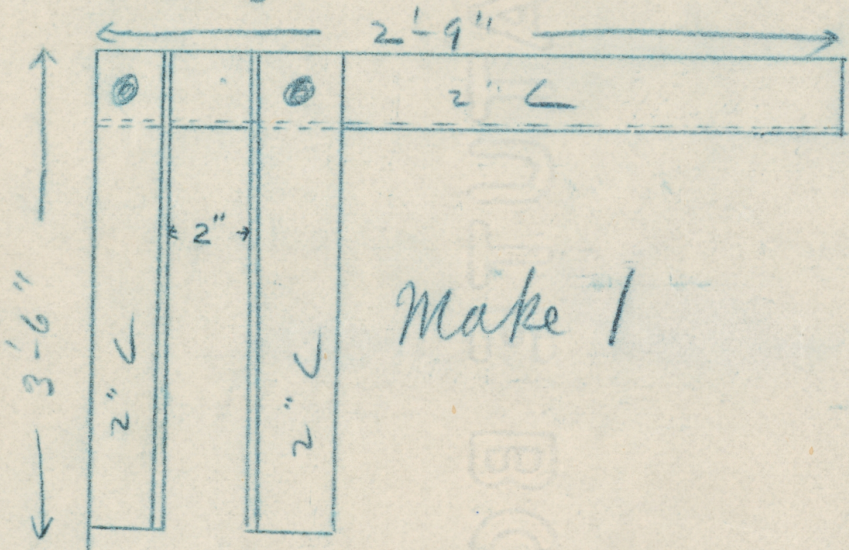
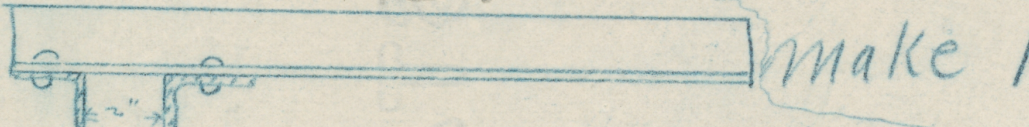
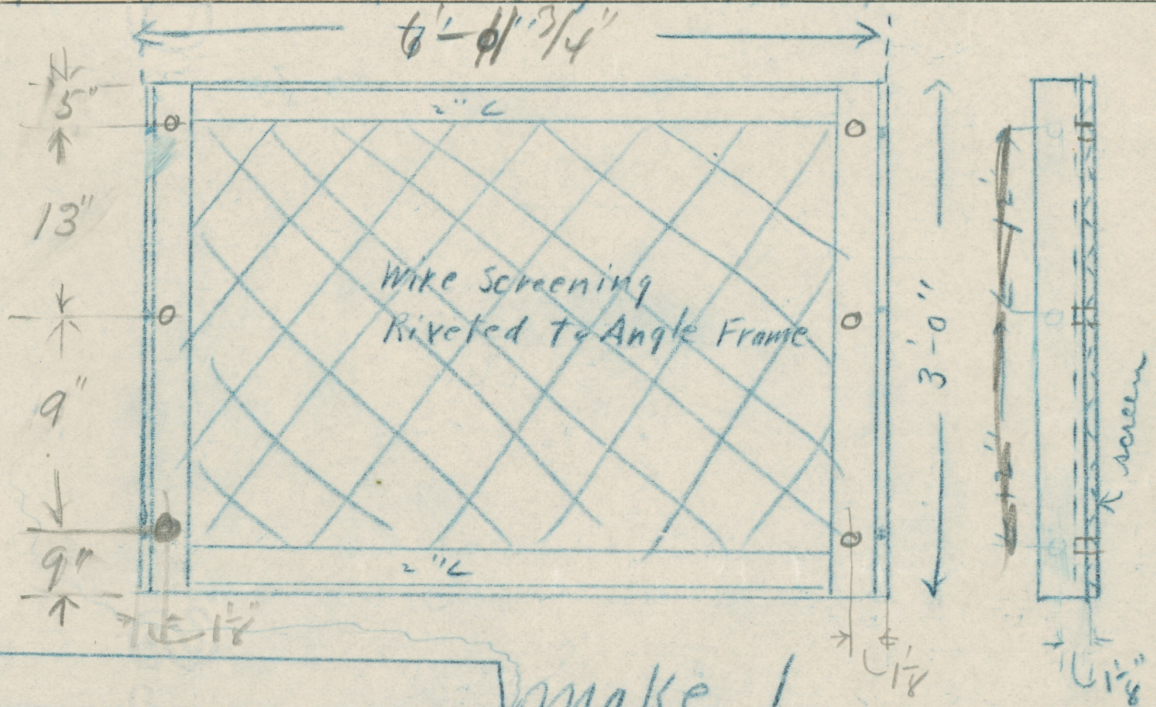
CHAMPION COPPER CO.

PAINESDALE, MICH.

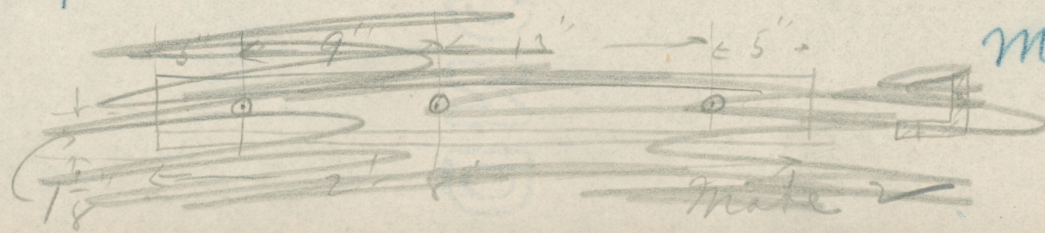
Checked by _____

Date *Nov 21* 1912

SUBJECT *Irons for Intake at Pump Station*



make 6



Requisition No.

ENGINEER'S OFFICE

F. P. No. 1623-6

Drawn by *H. T. Mercer*

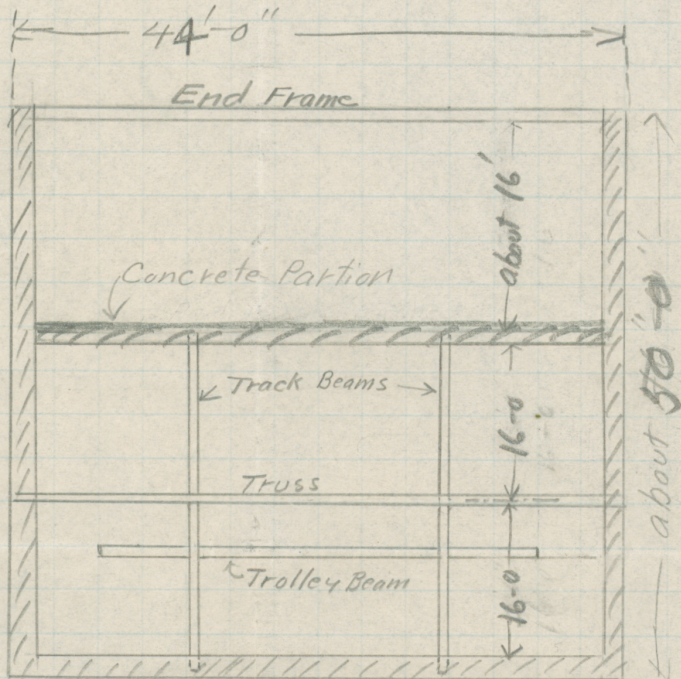
CHAMPION COPPER CO.

PAINESDALE, MICH.

Checked by

Date *Apr. 3* 1913

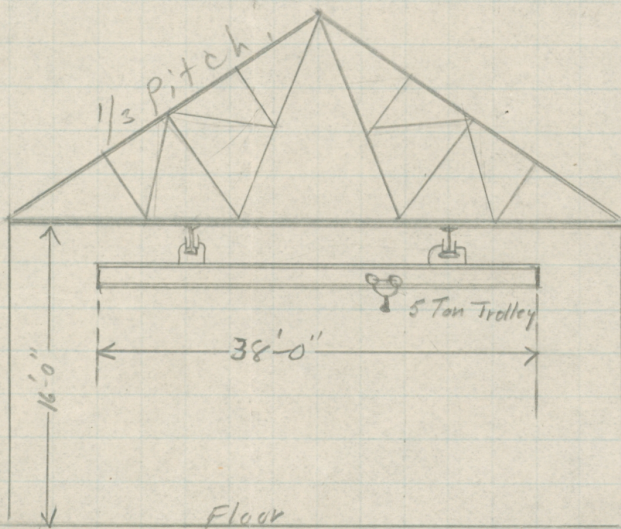
SUBJECT *Proposed Trolley Layout, Painesdale Pump Station*
Dimensions Approximate



Concrete Block Wall, 10" thick
Concrete Gable This End.

Total Cost including
Crane \$1100.00
Cost of concrete Crane
Beams \$290.00

W. B. & D. C.



Wanted:

- Approx Cost of Roof
- A. With Crane
- B. Without "

Requisition No. _____

ENGINEER'S OFFICE

F. P. No. _____

Drawn by _____

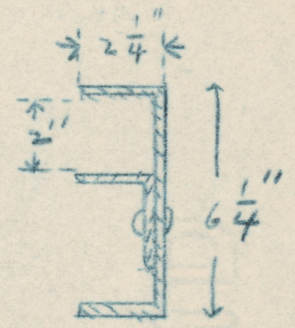
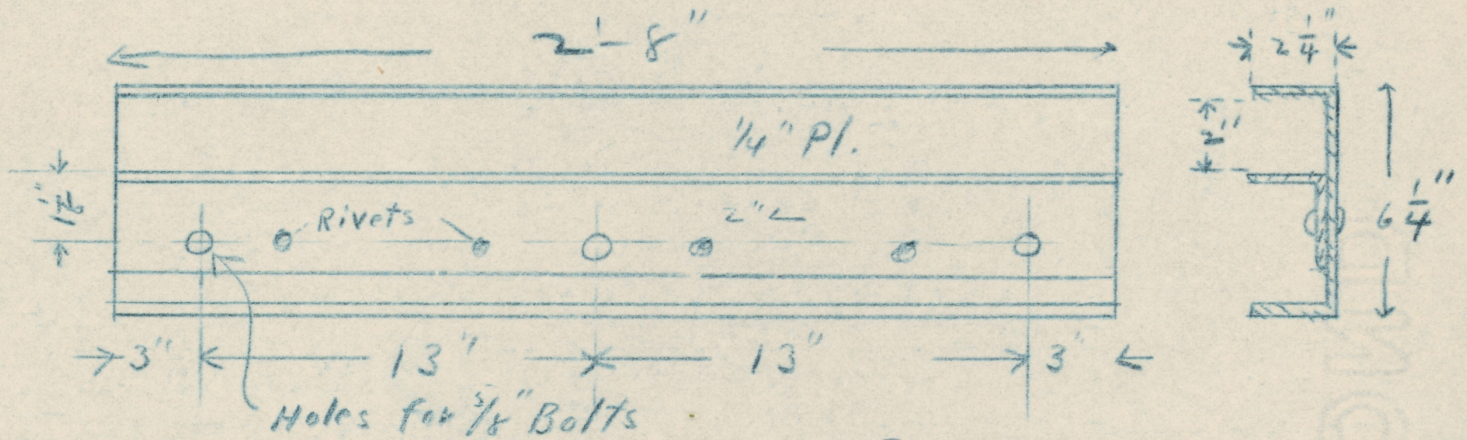
CHAMPION COPPER CO.

PAINESDALE, MICH.

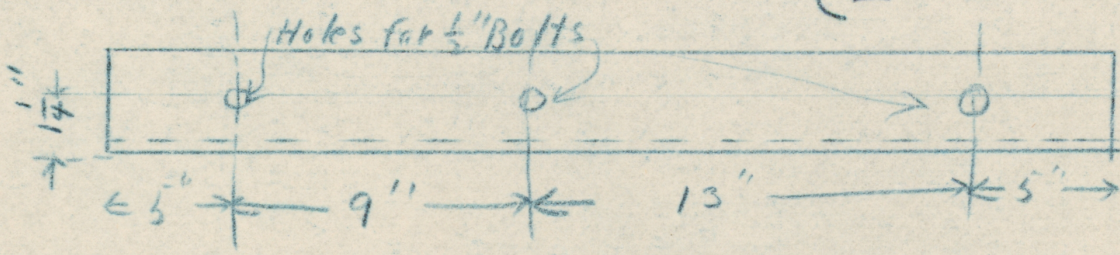
Checked by _____

Date _____ 191__

SUBJECT _____



make 2 { R
L



Side View