

F.P. 1221-E  
Sketch No.

CHAMPION COPPER CO.

DRAWING ROOM SKETCH.

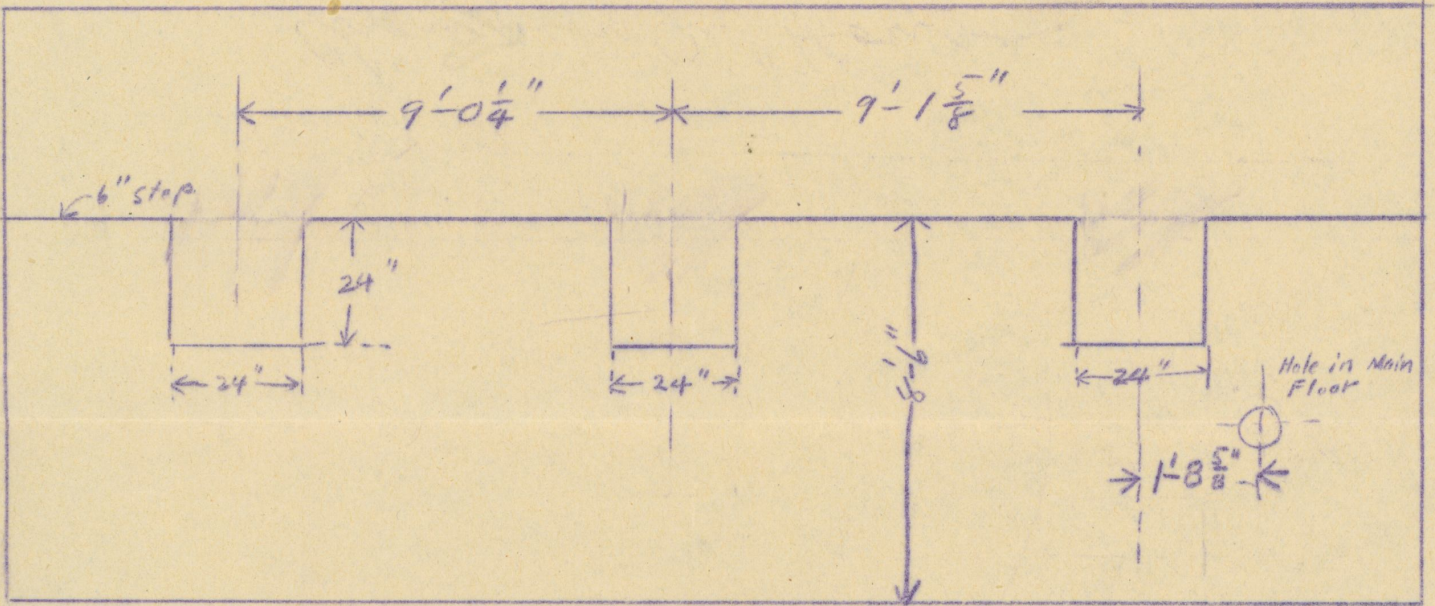
To be returned when Work is Finished.

Draughtsman

Examiner *H. J. ...*

Painesdale Mich., *Apr. 21* 1911

East Wall



West Wall of Oil House

Champion Oil House  
Concrete Foundation for Tanks.

see also Drawing # 2040

*277-51*

CHAMPION COPPER CO.

Draughtsman \_\_\_\_\_

Sketch No. \_\_\_\_\_

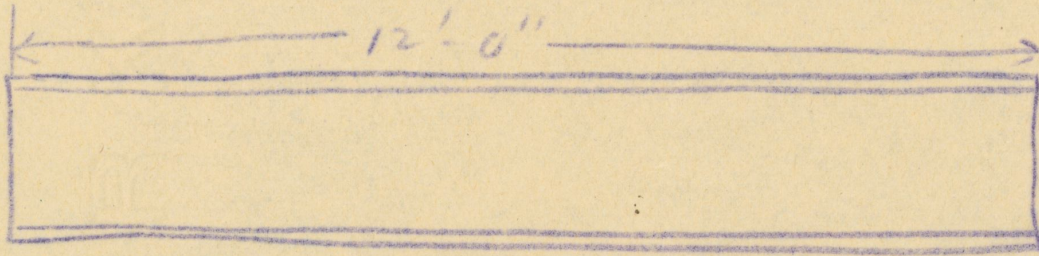
DRAWING ROOM SKETCH.

Examiner H. T. Mercer

To be returned when Work is Finished.

Painesdale Mich., Nov. 2 1910

Floor Beams for Oil House



5 pieces 8" I, 12'-0" long.

CHAMPION COPPER CO.

Draughtsman \_\_\_\_\_

Sketch No. \_\_\_\_\_

DRAWING ROOM SKETCH.

Examiner H. M.

To be returned when Work is Finished.

for C. J. Mason

Painesdale Mich., Apr. 10 1910

Steel for Baltic Oil House

- 20 - 2 1/2" x 2" Ls, 9'-6" long
- 20 - " x " " 2'-9 1/4" "
- 20 - " x " " 5'-1" "
- 10 - " x " " 15'-4" "

If there is not enough 2 1/2" x 2" Ls, use next larger size.